

CORRECTION

Correction: Genetic diversity of pneumococcal surface protein A in invasive pneumococcal isolates from Korean children, 1991-2016

Ki Wook Yun, Eun Hwa Choi, Hoan Jong Lee

There are a number of errors in the caption for Fig 4, “Multilocus sequence type and PspA clade for the serogroup 6 pneumococci.” Please see the complete, correct Fig 4 caption here.



OPEN ACCESS

Citation: Yun KW, Choi EH, Lee HJ (2018) Correction: Genetic diversity of pneumococcal surface protein A in invasive pneumococcal isolates from Korean children, 1991-2016. PLoS ONE 13(12): e0209511. <https://doi.org/10.1371/journal.pone.0209511>

Published: December 18, 2018

Copyright: © 2018 Yun et al. This is an open access article distributed under the terms of the [Creative Commons Attribution License](https://creativecommons.org/licenses/by/4.0/), which permits unrestricted use, distribution, and reproduction in any medium, provided the original author and source are credited.

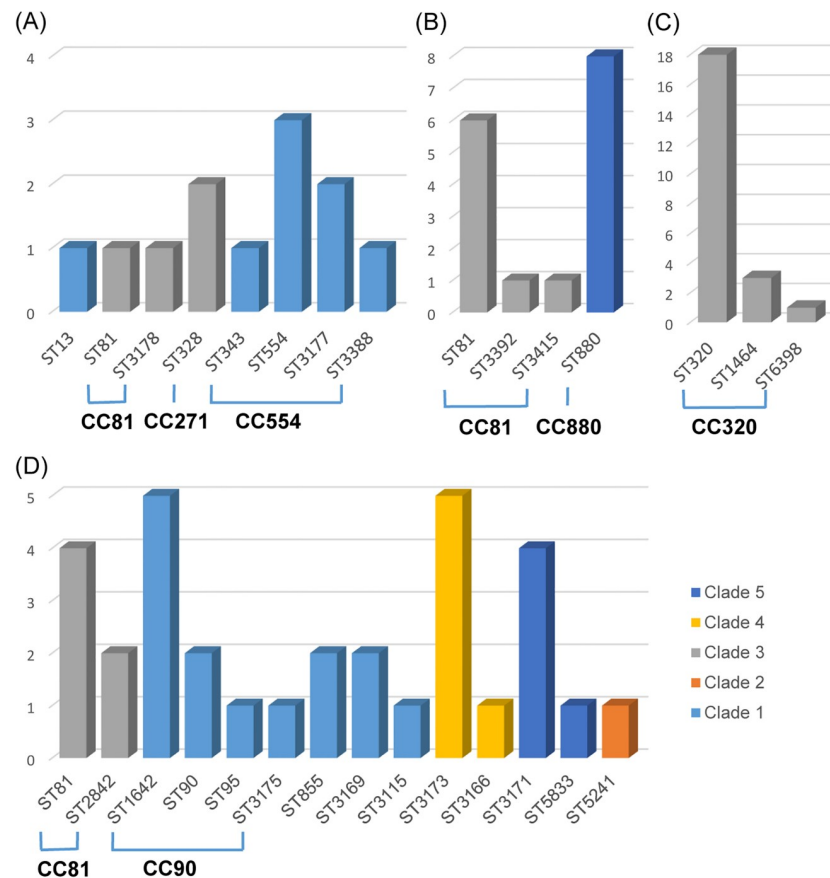


Fig 4. Multilocus sequence type and PspA clade in serogroups 14 (A), 23 (B), 19 (C), and 6 (D) pneumococci. The number pneumococcal isolates (y-axis) in the corresponding sequence type (ST, x-axis) is presented with the PspA clade types (differentiated in color). Isolates in the same clonal complex are exclusively assigned to the same clade type and each ST including singletons is composed of only one corresponding clade type.

<https://doi.org/10.1371/journal.pone.0209511.g001>

Reference

1. Yun KW, Choi EH, Lee HJ (2017) Genetic diversity of pneumococcal surface protein A in invasive pneumococcal isolates from Korean children, 1991–2016. *PLoS ONE* 12(11): e0183968. <https://doi.org/10.1371/journal.pone.0183968> PMID: 29131872