

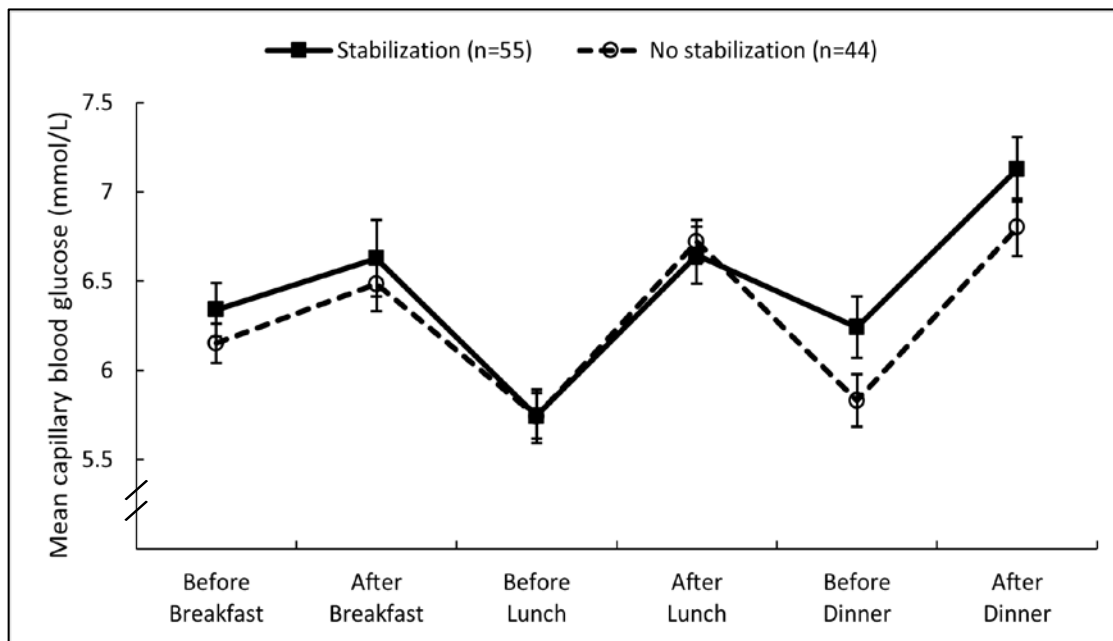
Supplementary Information

Supplementary Figure 1: Daily profile of mean capillary blood glucose during induction IIT in those with and without subsequent stabilization of beta-cell function at 2-years. The number of participants in each group is indicated by n.

Supplementary Figure 2: Kaplan-Meier curves showing time to initial loss of stabilization of beta-cell function between the metformin and metformin + IIT arms (defined by 2 consecutive visits with ISSI-2 lower than at baseline)

Supplementary Figure 3: Glucose response on the OGTT in the stabilization and non-stabilization groups at (A) baseline, (B) 3-weeks, (C) 6-months, (D) 12-months, (E) 18-months, and (F) 24-months. The number of participants in each group is indicated by n.

Suppl Figure 1: Daily profile of mean capillary blood glucose during induction IIT in those with and without subsequent stabilization of beta-cell function at 2-years. The number of participants in each group is indicated by n.

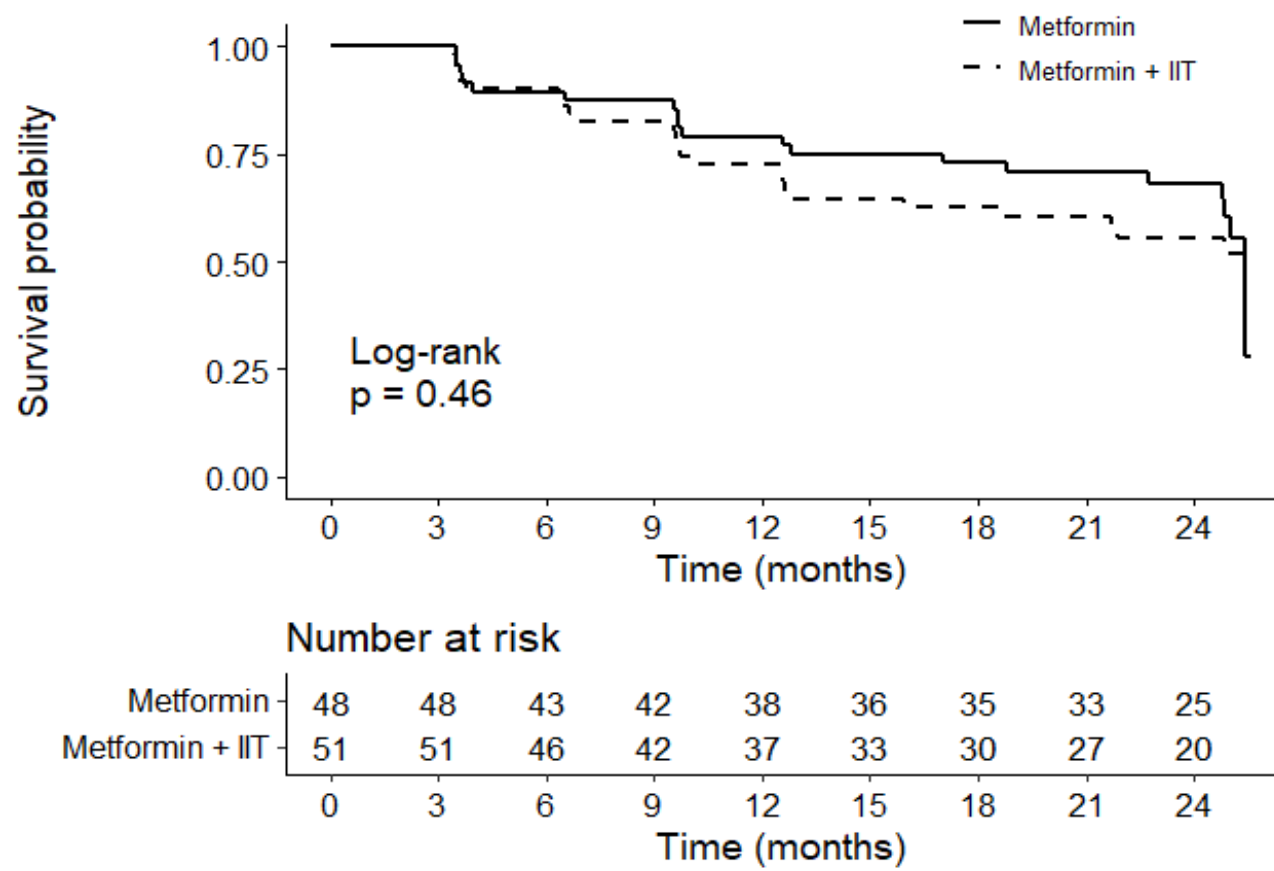


Data are presented as mean glucose \pm standard error.

Glucose measurements after meals are 2-hour post-meal

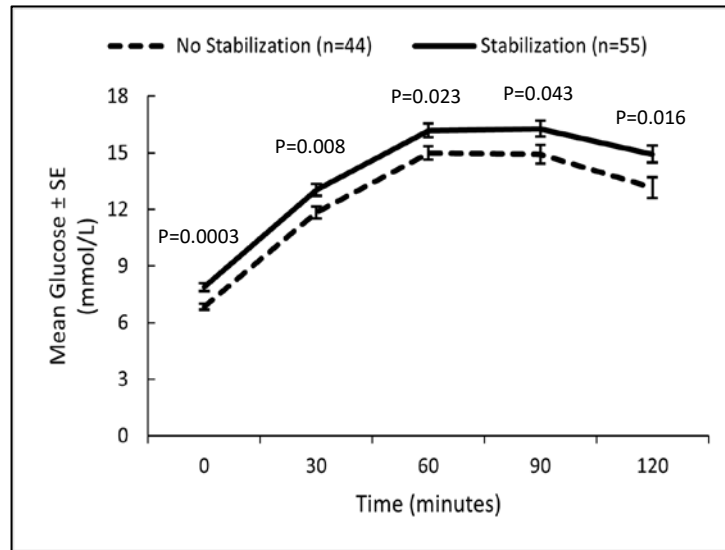
Number of participants: no stabilization n=44; stabilization n=55.

Suppl Fig 2: Kaplan-Meier curves showing time to initial loss of stabilization of beta-cell function between the metformin and metformin + IIT arms (defined by 2 consecutive visits with ISSI-2 lower than at baseline)

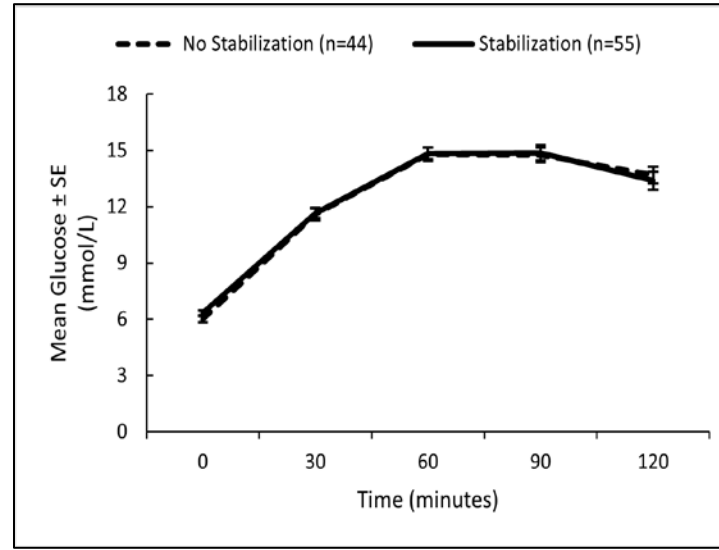


Suppl Fig. 3: Glucose response on the OGTT in the stabilization and non-stabilization groups at (A) baseline, (B) 3-weeks, (C) 6-months (D) 12-months, (E) 18-months, and (F) 24-months. The number of participants in each group is indicated by n.

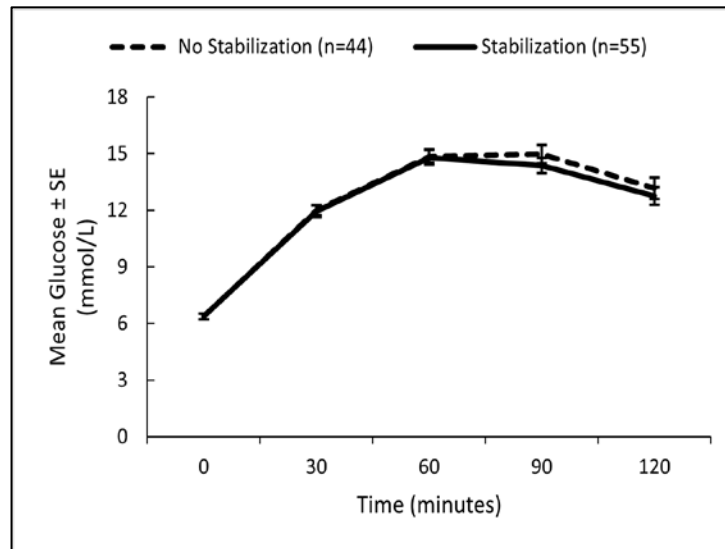
Panel A: At baseline



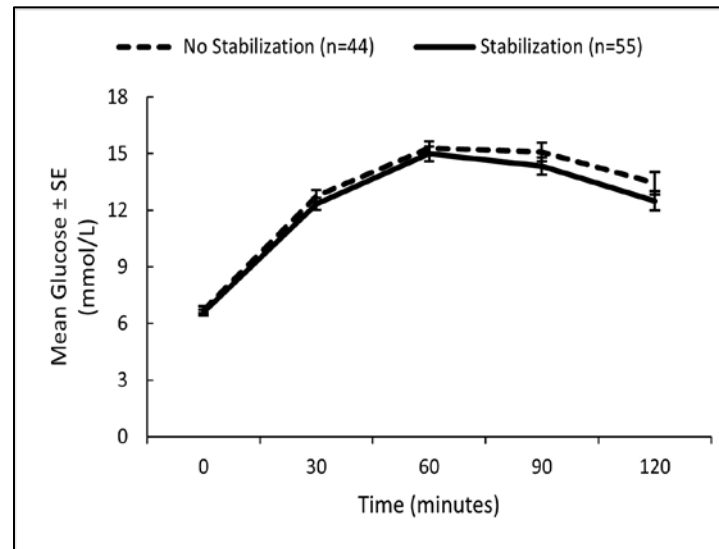
Panel B: At 3-weeks



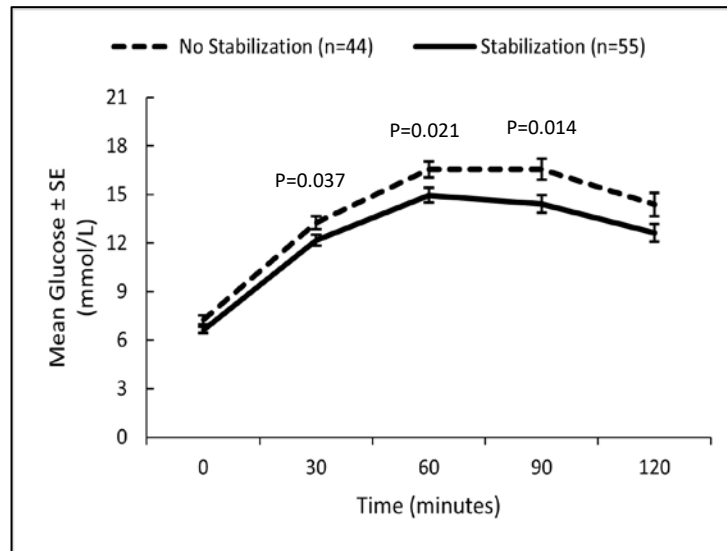
Panel C: At 6-months



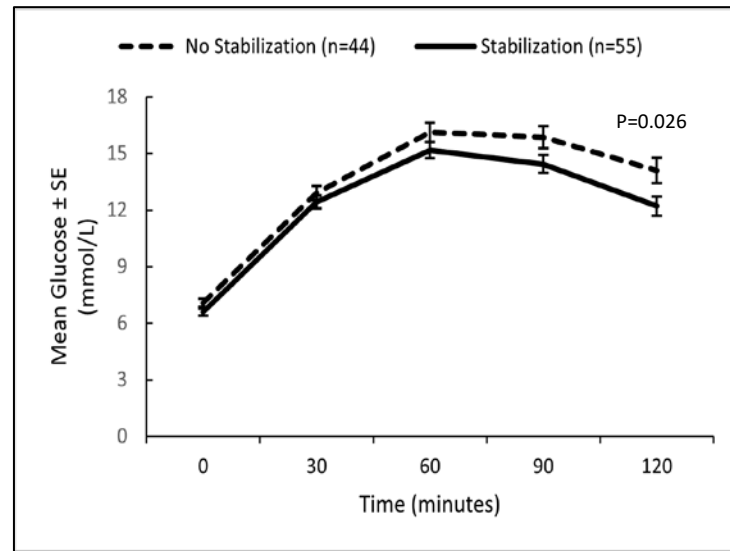
Panel D: At 12-months



Panel E: At 18-months



Panel F: At 24-months



Data presented as mean \pm standard error. Two-sided t-tests were performed for the mean difference between the groups, with no adjustment for multiple comparisons. Number of participants: no stabilization n=44; stabilization n=55.