



Contents lists available at ScienceDirect

Journal of Ginseng Research

journal homepage: www.ginsengres.org



Corrigendum to “A novel herbal formulation consisting of red ginseng extract and Epimedium koreanum Nakai-attenuated dextran sulfate sodium induced colitis in mice” [J Ginseng Res 44 (2020) 833–842]



Evelyn Saba ^{a, e}, Yuan Yee Lee ^a, Minki Kim ^a, Sun-Hee Hyun ^b, Chae-Kyu Park ^b, Eunjung Son ^c, Dong-Seon Kim ^c, Sung-Dae Kim ^{d, **, a, *}, Man Hee Rhee ^{a, *}

^a Laboratory of Veterinary Physiology, College of Veterinary Medicine, Kyungpook National University, Daegu, Republic of Korea

^b R&D Headquarters, Korean Ginseng Cooperation, Daejeon, Republic of Korea

^c KM Convergence Research Division, Korea Institute of Oriental Medicine, Daejeon, Republic of Korea

^d Research Center, Dongnam Institute of Radiological and Medical Sciences, Busan, Republic of Korea

^e Department of Veterinary Biomedical Sciences, Faculty of Veterinary and Animal Sciences, Pir Mehr Ali Shah-Arid Agriculture University, Rawalpindi, Pakistan

Respected Editor In Chief, Journal of Ginseng Research,

Following the publication of the above article, the authors have realized that they have inadvertently made a mistake by overlapping the iNOS western blot image in Fig. 2E with another iNOS image from a previous study. The previous study was however, reported in another journal later in the year than the current study. Two manuscripts were being prepared simultaneously, therefore, the authors made this mistake entirely unintentionally.

Following, is the updated western blot image for iNOS in Fig. 2E. As the previous shown bands were not of this study, therefore there has been no change in the graphical quantification expression and significance in Fig. 2F, as the mistake was only done while arranging the figures. However, for more confirmation, authors have again analyzed the quantification data which is consistent with the previous data.

The authors will be highly grateful to the Editor in chief of Journal of Ginseng Research for allowing them the opportunity to publish this Corrigendum, and apologize to the readership for any inconvenience caused.

DOI of original article: <https://doi.org/10.1016/j.jgr.2020.02.003>.

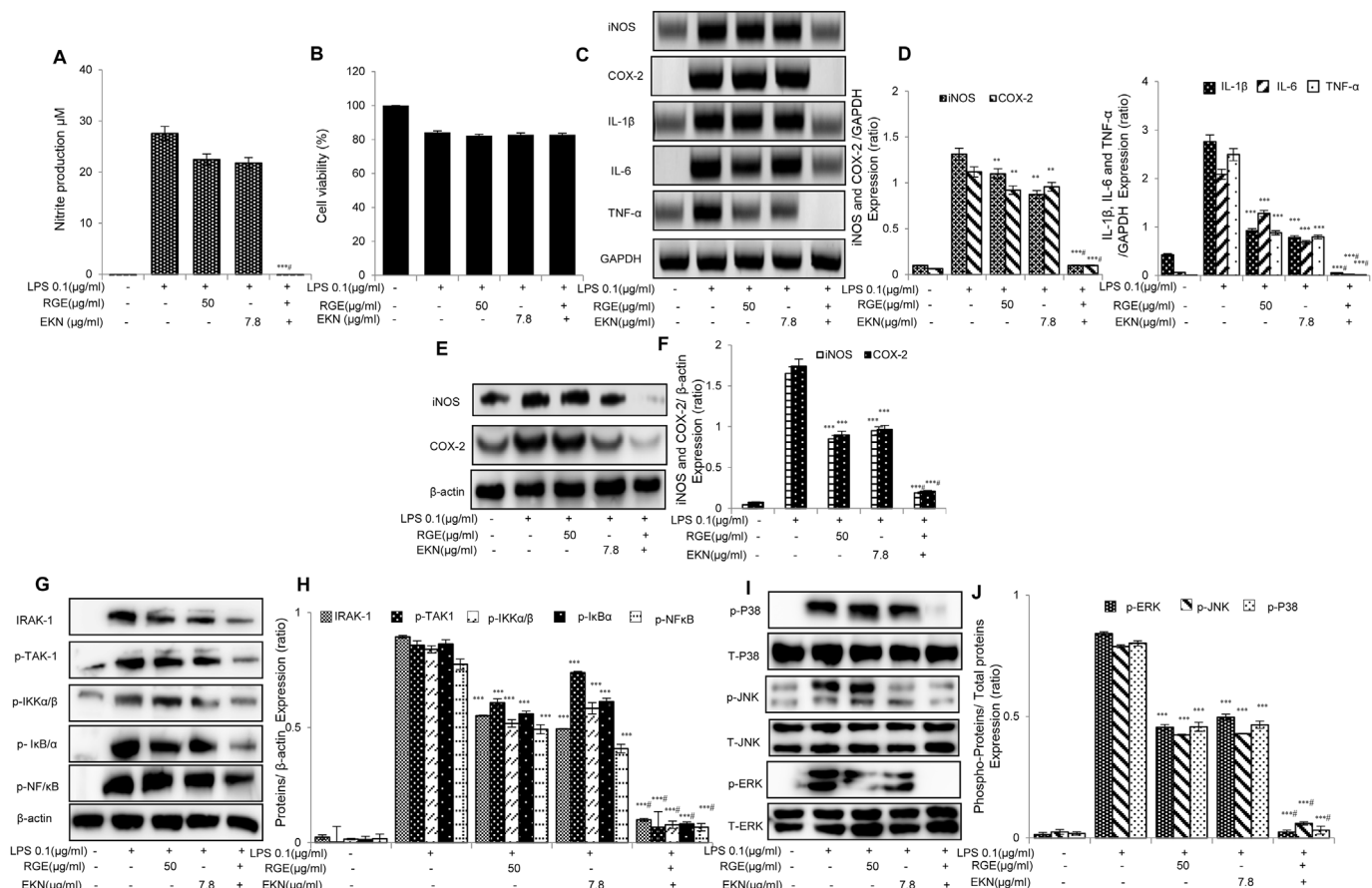
* Corresponding author.

** Corresponding author.

E-mail addresses: sdkim@dirams.re.kr (S.-D. Kim), rheemh@knu.ac.kr (M.H. Rhee).

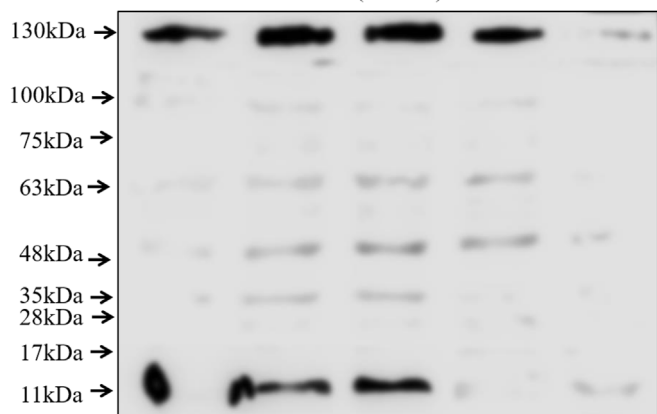
<https://doi.org/10.1016/j.jgr.2021.02.008>

1226-8453/© 2021 The Korean Society of Ginseng. Publishing services by Elsevier B.V. This is an open access article under the CC BY-NC-ND license (<http://creativecommons.org/licenses/by-nc-nd/4.0/>).



iNOS full WB picture for RGE+EKN- JGR

iNOS (130 kDa)



Sincere Regards,