

Corrigendum

Corrigendum to “Evaluation of the Genotoxic Potential against H₂O₂-Radical-Mediated DNA Damage and Acute Oral Toxicity of Standardized Extract of *Polyalthia longifolia* Leaf”

Subramanion L. Jothy ¹, Yeng Chen ², Jagat R. Kanwar ³,
and Sreenivasan Sasidharan ¹

¹Institute for Research in Molecular Medicine (INFORMM), Universiti Sains Malaysia (USM), George Town, Penang 11800, Malaysia

²Dental Research & Training Unit, and Oral Cancer Research and Coordinating Centre (OCRCC), Faculty of Dentistry, University of Malaya, Kuala Lumpur 50603, Malaysia

³Nanomedicine-Laboratory of Immunology and Molecular Biomedical Research (LIMBR), School of Medicine (SoM), Faculty of Health, Institute for Frontier Materials (IFM), Deakin University, Waurn Ponds, Geelong, VIC 3217, Australia

Correspondence should be addressed to Subramanion L. Jothy; jothylachumy@yahoo.com and Sreenivasan Sasidharan; srisasidharan@yahoo.com

Received 30 April 2021; Accepted 30 April 2021; Published 30 May 2021

Copyright © 2021 Subramanion L. Jothy et al. This is an open access article distributed under the Creative Commons Attribution License, which permits unrestricted use, distribution, and reproduction in any medium, provided the original work is properly cited.

In the article titled “Evaluation of the Genotoxic Potential against H₂O₂-Radical-Mediated DNA Damage and Acute Oral Toxicity of Standardized Extract of *Polyalthia longifolia* Leaf” [1], the incorrect representative image for Figure 3(e1) sample was included as noted on PubPeer [2]. The published Figure 3(e1) depicted the histological details of the untreated control rat heart organ. No pathologies were recorded in the histological sections of the heart of the untreated control rat group. Due to an error that occurred inadvertently at the time of figure assembly by the first author, the incorrect representative image for Figure 3(e1) was included. In the current figure, Figure 3(e1) belongs to Figure 3(e2) panel heart images of *P. longifolia* leaf extract-treated rats group. With the agreement of the handling editor, the corrected version of Figure 3(e1) is provided below. The authors

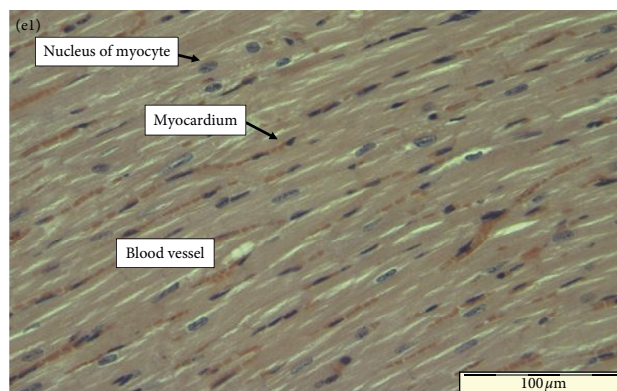


FIGURE 3: Representative histological photomicrographs of (e1) heart of control group.

confirm that this error did not change the scientific conclusions of the published article and apologize for this human error.

References

- [1] S. L. Jothy, Y. Chen, J. R. Kanwar, and S. Sasidharan, "Evaluation of the Genotoxic Potential against H₂O₂-Radical-Mediated DNA Damage and Acute Oral Toxicity of Standardized Extract of *Polyalthia longifolia* Leaf," *Evidence-Based Complementary and Alternative Medicine*, vol. 2013, Article ID 925380, 13 pages, 2013.
- [2] D. Oxleyi, "Evaluation of the Genotoxic Potential against H₂O₂-Radical-Mediated DNA Damage and Acute Oral Toxicity of Standardized Extract of *Polyalthia longifolia* Leaf," 2020, <https://pubpeer.com/publications/E77467FCAB614D6CA7FF77C5FB581F>.