

RESEARCH ARTICLE

A β_{42} -mediated proteasome inhibition and associated tau pathology in hippocampus are governed by a lysosomal response involving cathepsin B: Evidence for protective crosstalk between protein clearance pathways

Karen L. G. Farizatto^{1,2}, Uzoma S. Ikonne^{1*}, Michael F. Almeida¹, Merari F. R. Ferrari², Ben A. Bahr^{1*}

1 Biotechnology Research and Training Center, William C. Friday Laboratory, University of North Carolina—Pembroke, Pembroke, North Carolina, United States of America, **2** Department of Genetics and Evolutionary Biology, Institute for Biosciences, University of Sao Paulo, Sao Paulo, Sao Paulo, Brazil

* Current address: A.T. Still University, School of Osteopathic Medicine, Mesa, Arizona, United States of America

* bahr@uncp.edu



OPEN ACCESS

Citation: Farizatto KLG, Ikonne US, Almeida MF, Ferrari MFR, Bahr BA (2017) A β_{42} -mediated proteasome inhibition and associated tau pathology in hippocampus are governed by a lysosomal response involving cathepsin B: Evidence for protective crosstalk between protein clearance pathways. *PLoS ONE* 12(8): e0182895. <https://doi.org/10.1371/journal.pone.0182895>

Editor: Jaya Padmanabhan, USF Health Morsani College of Medicine, UNITED STATES

Received: March 14, 2017

Accepted: July 26, 2017

Published: August 10, 2017

Copyright: © 2017 Farizatto et al. This is an open access article distributed under the terms of the [Creative Commons Attribution License](https://creativecommons.org/licenses/by/4.0/), which permits unrestricted use, distribution, and reproduction in any medium, provided the original author and source are credited.

Data Availability Statement: All relevant data are within the paper.

Funding: This work was supported by the Coins for Alzheimer's Research Trust (BAB), as well as by grants 472042/2008-4 (MFRF), 471779/2010-5 (MFRF), and a graduate scholarship (KLGf) from Conselho Nacional de Desenvolvimento Científico e Tecnológico, and by Fundacao de Amparo a Pesquisa do Estado de Sao Paulo grant 2012/

Abstract

Impaired protein clearance likely increases the risk of protein accumulation disorders including Alzheimer's disease (AD). Protein degradation through the proteasome pathway decreases with age and in AD brains, and the A β_{42} peptide has been shown to impair proteasome function in cultured cells and in a cell-free model. Here, A β_{42} was studied in brain tissue to measure changes in protein clearance pathways and related secondary pathology. Oligomerized A β_{42} (0.5–1.5 μ M) reduced proteasome activity by 62% in hippocampal slice cultures over a 4–6-day period, corresponding with increased tau phosphorylation and reduced synaptophysin levels. Interestingly, the decrease in proteasome activity was associated with a delayed inverse effect, >2-fold increase, regarding lysosomal cathepsin B (CatB) activity. The CatB enhancement did not correspond with the A β_{42} -mediated phospho-tau alterations since the latter occurred prior to the CatB response. Hippocampal slices treated with the proteasome inhibitor lactacystin also exhibited an inverse effect on CatB activity with respect to diminished proteasome function. Lactacystin caused earlier CatB enhancement than A β_{42} , and no correspondence was evident between up-regulated CatB levels and the delayed synaptic pathology indicated by the loss of pre- and postsynaptic markers. Contrasting the inverse effects on the proteasomal and lysosomal pathways by A β_{42} and lactacystin, such were not found when CatB activity was up-regulated two-fold with Z-Phe-Ala-diazomethylketone (PADK). Instead of an inverse decline, proteasome function was increased marginally in PADK-treated hippocampal slices. Unexpectedly, the proteasomal augmentation was significantly pronounced in A β_{42} -compromised slices, while absent in lactacystin-treated tissue, resulting in >2-fold improvement for nearly complete recovery of proteasome function by the CatB-enhancing compound. The PADK treatment also reduced A β_{42} -mediated tau phosphorylation and synaptic marker declines,

15495-2 (MFRF). Helpful student researchers were supported by NIH RISE grant 5R25GM077634-04 to University of North Carolina – Pembroke. The funding agencies had no role in study design, data collection and analysis, or decision to publish.

Competing interests: The authors have read the journal's policy and they have the following competing interests: Dr. Bahr is co-inventor with Dr. Dennis Wright on U.S. Patent 8,163,953 (title: Compounds for lysosomal modulation and methods of use – for treating Alzheimer's disease, Parkinson's disease, Huntington's disease, and amyotrophic lateral sclerosis), assigned to University of Connecticut. Drs. Bahr and Ikonne have patent applications pending regarding materials and compound combinations for cathepsin B enhancement and methods of use for treating Alzheimer's disease, mild cognitive impairment, early dementia, forms of α -synucleinopathy, traumatic brain injury, cardiomyopathy, eye disease, and skin damage (U.S. Provisional application No. 61/836,216, PCT/US2014/042728, U.S. Provisional application 62/262,848, PCT/US2016/064433) to be assigned to University of North Carolina – Pembroke. Dr. Bahr was a cofounder of Synaptic Dynamics Inc. with UConn Ventures to develop therapeutic positive lysosomal modulators. Through UConn Ventures, the company filed for dissolution in 2014. The listed competing interests do not alter our adherence to PLOS ONE policies on sharing data and materials.

corresponding with the positive modulation of both proteasome activity and the lysosomal CatB enzyme. These findings indicate that proteasomal stress contributes to AD-type pathogenesis and that governing such pathology occurs through crosstalk between the two protein clearance pathways.

Introduction

Degradation of old and damaged proteins, through the proteasome and autophagy-lysosome systems, decreases with age thus altering the vital balance between protein synthesis and protein clearance (see reviews: [1–4]). This altered balance influences age-related neurodegenerative disorders, likely increasing the risk of protein accumulation disorders including Alzheimer's disease (AD) since deposition of amyloid and tau proteins develop long before the onset of cognitive symptoms [5]. Altered levels of lysosomes, impaired maturation of autophagolysosomes, and other stress indicators of the autophagy-lysosomal pathway occur in AD brains [6–8]. AD and mild cognitive impairment also exhibit compromised proteasome function as do other age-related diseases [9–13]. Proteasomal dysfunction in the AD brain has been shown to result from the inhibitory binding of filamentous tau to proteasomes [14], and a recent study found that tau-driven proteasome impairment occurs in a mouse model of tauopathy [15]. In addition, A β_{42} peptide oligomers inhibit proteasomes *in vitro* [16, 17], and 3xTg-AD mice exhibit impaired proteasome activity correlating with intraneuronal oligomers [16]. The study also found that proteasome inhibitors lead to increases in A β and tau levels in pre-pathological 3xTg-AD mice, thus pointing to proteasomal stress as a contributor to the multi-proteinopathy of AD.

The proteasome and autophagy-lysosomal systems do not appear to be completely independent protein clearance pathways [18–21], but rather exhibit evidence of concerted regulation and crosstalk to maintain protein homeostasis. As an example of such crosstalk, autophagy upregulation has been implicated as a response to compensate for proteasomal stress [17, 22–24], with autophagy activation and lysosomal recruitment occurring in an HDAC6-dependent manner. Also, proteasome inhibition has been shown to activate autophagy in order to eliminate protein aggregates in human cancer cells and mouse fibroblasts [25], and such activation of the lysosomal proteolytic pathway has been linked to chronic, low-level proteasome inhibition in neural SH-SY5Y cells [26]. Early activation of the autophagic-lysosomal pathway may explain the abnormally high number of lysosomal compartments containing cathepsin B (CatB) within neurons of at-risk regions from sporadic AD brains [27]. A positive modulator of the autophagy-lysosomal system was recently found to enhance CatB activity and to reduce A β_{42} accumulation in neuroblastoma cells expressing human amyloid precursor protein (APP) with the Swedish mutation [28]. It is noteworthy that CatB regulation has been extensively studied and the enzyme was found to be increased in response to the following types of protein accumulation stress:

- chloroquine-induced protein accumulation stress in hippocampal slices [29]
- human huntingtin expression in cultured neurons [30]
- A β_{42} treatment of mouse neuronal cell line [31]
- expression of familial AD mutant APP in transgenic mouse brain [31]
- proteasome inhibitor treatment in rat hippocampus [32]

- proteasome inhibitor treatment in control SH-SY5Y cells and those expressing human APP [33]

The above CatB responses are of interest since such cellular responses may link the proteasomal and lysosomal pathways during episodes of protein accumulation pathology. The responses may in fact influence AD pathogenesis since CatB degrades A β_{42} through C-terminal truncation [31, 34, 35], and such degradation was blocked by the selective CatB inhibitor CA074 [31]. A similar inhibitor blocked the ability of a CatB-enhancing compound from improving A β_{42} clearance in monocytes from AD patients [36]. In several transgenic mouse models of AD, genetic and pharmacological treatments that increase CatB activity led to the significant lowering of A β_{42} levels [31, 35, 37–41] as well as to reductions in the cellular and behavioral disease parameters [31, 35, 37, 38, 41]. However, there is conflicting evidence about the involvement of CatB in regards to protein accumulation events since reducing CatB has also been shown to lower A β peptide levels and improve memory in transgenic mice [42, 43]. Due to the conflicting reports, it is important to further address the role CatB plays during protein accumulation pathology. Many questions obviously remain regarding the CatB enzyme and the different roles proposed for it in the brain.

Protein clearance is vital for cellular homeostasis and the clearance rates for A β peptides are indeed slower in AD as compared to cognitively normal individuals [44]. Accordingly, we set out to understand how A β_{42} and a selective proteasome inhibitor influence the interplay between the proteasomal and lysosomal protein clearance pathways in brain tissue. Using cultured slices of a brain area that is vulnerable to AD, the present study will also examine CatB's response to proteasomal stress in order to understand its role in secondary pathogenic events.

Materials and methods

Hippocampal slice cultures

Sprague-Dawley rat litters (Charles River Laboratories, Wilmington, MA) were housed and treated in accordance with the recommendations from the Guide for the Care and Use of Laboratory Animals from the National Institutes of Health and in accordance with an approved protocol from the Institutional Animal Care and Use Committee of the University of North Carolina—Pembroke. Brain tissue from postnatal 12-day-old rats was rapidly removed to prepare hippocampal slices [29, 45]. Transverse slices of hippocampus (400 μ m) were quickly prepared and the slices were kept in an iced buffer solution until groups of slices could be gently positioned on the Biopore PTFE membrane of each Millicell-CM insert (Millipore, Billerica, MA). Culture medium consisting of 50% basal medium Eagle, 25% Earle's balanced salts, 25% horse serum (Gemini Bio-products, Sacramento, CA), and defined supplements as described [45] was changed periodically. The hippocampal slices were maintained at 37°C in 5% CO₂-enriched atmosphere for 18–22 days before being treated with different agents. A subset of slices were fixed and subjected to anti-synaptophysin immunocytochemistry, and images were acquired using Zeiss 710 and Zeiss 780 confocal systems.

Treatments

A β_{42} peptide (American Peptide Company, Sunnyvale, CA) from precise aliquots was reconstituted in DMSO at 20 mM and diluted to 15 μ M in phosphate-buffered saline. The diluted peptide was allowed to aggregate in the dark at room temperature for 6 days before being utilized for experiments in hippocampal slices cultures. Over a period of 4–6 days, pre-aggregated A β_{42} diluted to 0.5–1.5 μ M in serum-free media was applied to the cultured slices for 14–16 h. Subsequently, horse serum-containing medium was mixed into culture wells, further diluting

A β_{42} to 0.38–1.1 μ M for 8–10 h before the next daily treatment. In other treatments, the irreversible proteasome inhibitor lactacystin (Santa Cruz Biotechnology, Santa Cruz, CA) was applied daily to hippocampal slice cultures at 5–10 μ M for 1–4 days. Other compounds and lysosome-targeting agents (see ref. [46]) were also tested in the hippocampal slices to identify CatB positive modulators. The compound Z-Phe-Ala-diazomethylketone (PADK, also known as Z-FA-CHN₂; Bachem, King of Prussia, PA) that promotes mature CatB levels in different model systems [35, 47, 48] was diluted to 1–10 μ M and applied daily to cultures in the absence or presence of A β_{42} . After the treatments, cultured slices were fixed in 4% paraformaldehyde for histology or gently removed from the inserts into groups of 7–9 each using ice-cold isotonic buffer containing 0.32 M sucrose, 5 mM HEPES (pH 7.4), 1 mM EDTA and 1 mM EGTA.

Immunoblot analysis

The groups of hippocampal slices were centrifuged and the pelleted tissue was sonicated in cold lysis buffer consisting of 15 mM HEPES (pH 7.4), 0.5 mM EDTA, 0.5 mM EGTA, and a protease inhibitor cocktail (Sigma-Aldrich; St. Louis, MO). Protein content was determined using the Pierce BCA Protein Assay (Thermo Scientific, Rockford, IL). Equal protein aliquots of the hippocampal slice samples were denatured in sample buffer for 5 min at 100°C and the proteins separated on gradient gels and transferred to nitrocellulose. Blots were incubated in blocking solution containing 5% milk or BSA for 1 h. Primary antibody staining utilized antibodies against synaptophysin (1:1000), synapsin II (1:500), cathepsin B (1:100), and GluR1 (1:500) from Millipore, as well as against actin (1:500) and phospho-tau^{Ser199/202} (1:1000) from Sigma-Aldrich and 20S proteasome α -1 subunit (1:500) from Santa Cruz Biotechnology. Anti-IgG-alkaline phosphatase conjugates and anti-IgG-horseradish peroxidase conjugates were used for the secondary antibody step, and antigen staining and image development involved the 5-bromo-4-chloro-3-indolyl phosphate and nitroblue tetrazolium substrate system or chemiluminescence protocols using Hyperfilm ECL exposures (GE Healthcare, Pittsburgh, PA) as well as the GE Amersham AI600RGB imager. Immunostained bands were scanned at high resolution to determine integrated optical density with BIOQUANT software (R & M Biometrics, Nashville, TN).

Proteasome activity

The suc-LLVY-AMC substrate was used to assess the chymotrypsin-like proteasome activity in hippocampal slice cultures. Samples of freshly harvested slice tissue were quickly homogenized in assay buffer and equal protein aliquots (30 μ g) in duplicate were incubated with a fluorogenic substrate (Millipore) in 20 mM Tris buffer, pH 7.5, at 37°C. The fluorescence emission at 440 nm was measured periodically over a 45-min period using the SpectraMax M3 microplate reader. Lactacystin was added to a subset of control slice samples to determine that >80% of the measured substrate cleavage was mediated by lactacystin-sensitive proteasome activity.

Cathepsin B activity

The InnoZyme Cathepsin B Activity Assay Kit (Millipore) was used to measure CatB activity in the hippocampal slice samples. Aliquots of homogenized samples (10 μ g protein) were assessed in duplicate for proteolytic activity using the Z-Arg-Arg AMC substrate and the SpectraMax M3 microplate reader. The CatB specific inhibitor CA074 (10 μ M) was added to a subset of control slice samples to determine that all of the measured substrate cleavage was mediated by CatB.

Statistical analyses

For the results of mean and SEM values across treatment groups, statistical tests included linear regression analysis, unpaired *t* tests, and analyses of variance (ANOVA) followed by post hoc tests using Prism software (GraphPad, San Diego, CA).

Results

To test for changes in the proteasome pathway that are related to the AD A β_{42} peptide, the peptide's effects were assessed in stable explants of brain tissue. Rat hippocampal slice cultures were used, a method providing mature brain tissue that maintains native neuronal organization and synaptic density (Fig 1a and 1b) as well as other features of the adult hippocampus [49]. A β_{42} was first allowed to self-aggregate for 6 days following a previously established protocol [50] in order to evaluate oligomeric species thought to be involved in AD-related stress on cellular homeostasis. Hippocampal slice cultures were treated daily with the pre-aggregated, low-concentration A β_{42} and as a result proteasome chymotrypsin-like activity was reduced by more than 60% after 4–6 days (Fig 1c). Note that the proteasome assay measured activity that is sensitive to 20S proteasome inhibitors, but the loss of proteasome function due to A β_{42} occurred in the absence of any change in the 20S proteasome α -1 subunit (Fig 1d).

The compromised proteasome activity was tested for a link to secondary synaptic pathology since the proteasome pathway has a major role in regulating synaptic proteins [51]. The A β_{42} -induced proteasome inhibition was indeed associated with a significant loss in synaptophysin (Fig 1e). The presynaptic marker was reduced by 61% as compared to control hippocampal slice cultures, whereas other proteins including actin were unchanged. Note that the reductions in synaptophysin and proteasome activity were similar in degree and they occurred in correspondence with an A β_{42} -mediated increase in tau species, isoforms identified as being phosphorylated on Ser199 and Ser202 (Fig 2). Thus, the effects of proteasome dysfunction in the brain may involve a previously identified pathogenic cascade linking tau deposition and gradual synaptic decline [45]. The 55- to 70-kDa phospho-tau immunoreactivity, normalized to within-sample actin levels, was increased two-fold after hippocampal slices were treated for 6 days with 0.5–1.5 μ M pre-aggregated A β_{42} ($p < 0.0001$).

Next, we tested whether the A β_{42} -mediated proteasome compromise leads to changes in the lysosomal pathway since A β_{42} preparations [29, 31, 52] and proteasome inhibitors [32, 33] have been shown to increase lysosomal cathepsin enzymes. In hippocampal slice cultures, proteasome activity was significantly decreased 62% by a preparation of pre-aggregated A β_{42} over a 6-day treatment period (Fig 3a). Note after 4 days of A β_{42} treatment, the reduction in proteasome function was not associated with any activity change regarding the lysosomal enzyme CatB. However, it is of interest that after 6 days of treatment the CatB activity exhibited a striking 2–3-fold increase over the baseline level ($p = 0.0025$). The delayed up-regulation in CatB activity shown in Fig 3a does not correspond with A β_{42} -mediated increases in pTau-Ser^{199/202} species (Fig 3b) since the latter occurred prior to the CatB response.

To test if CatB responds to another type of proteasomal stress, cultured hippocampal slices were treated with the 20S proteasome inhibitor lactacystin. As with A β_{42} treatment, lactacystin significantly reduced proteasome activity (Fig 4a) but it had a larger inhibitory effect than that produced by the pre-aggregated A β_{42} . The dashed line in Fig 4a represents control proteasome activity, and Fig 5 confirms that mature hippocampal slice cultures stably maintain proteasomal activity across several weeks in culture. The lactacystin-induced decline in proteasome function was also found to be independent of any change in the 20S proteasome α -1 subunit (Fig 4b) as was found with A β_{42} . Comparing lactacystin with A β_{42} with regards to CatB modulation, lactacystin had an inverse effect on CatB activity, as did A β_{42} , with respect to the

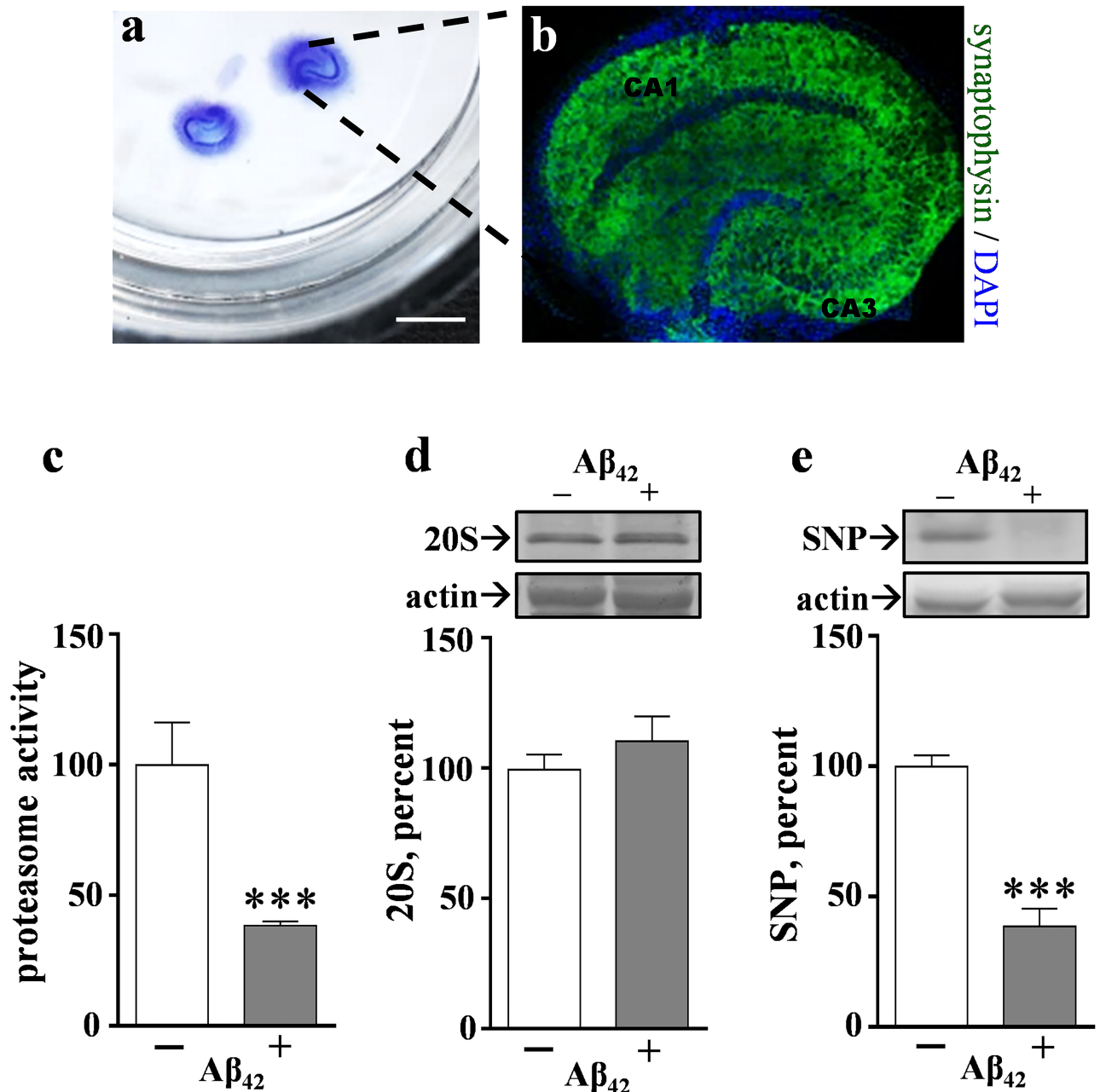


Fig 1. Pre-aggregated Aβ₄₂ causes proteasomal dysfunction in correspondence with synaptic decline in rat hippocampal slice cultures. The brain tissue was maintained on culture inserts with media placed below the insert membrane—note the two Nissl-stained slices showing their insert positions and neuronal layers (a) (size bar = 3 mm). After several weeks in culture, a hippocampal slice was stained with anti-synaptophysin and DAPI to show the stable maintenance of CA1, CA3, and dentate gyrus subfields and their associated dense neuropil (b) (view-field width: 2.6 mm). Aliquots of pre-aggregated, human Aβ₄₂ peptide were diluted to 0.5–1.5 μM and applied daily to slice cultures alongside vehicle-treated slices. Proteasome chymotrypsin-like activity (mean Vmax/s ± SEM normalized to control; n = 6) was measured in hippocampal slices that were harvested after 4–6 days of treatment (c). For immunoblots, groups of 7–9 slices each were harvested after 6 days of treatment, sonicated, and equal protein aliquots assessed for the 20S proteasome α-1 subunit (d), synaptophysin (SNP; e), and actin. Mean immunoreactivity levels were normalized to their respective controls and percent ± SEM values are shown. Unpaired t-tests: ***p < 0.001.

<https://doi.org/10.1371/journal.pone.0182895.g001>

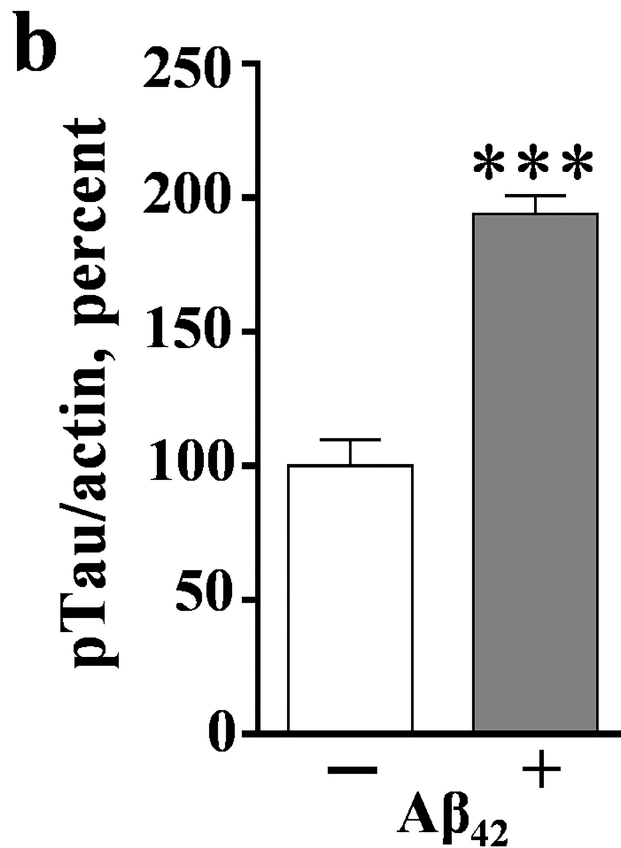
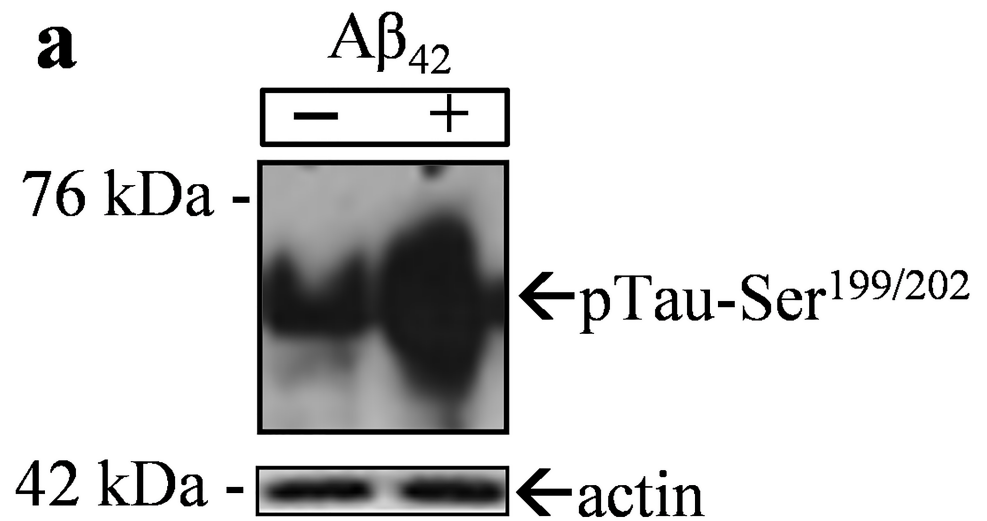


Fig 2. Treatment with pre-aggregated Aβ₄₂ peptide leads to increased phosphorylation of tau residues Ser199 and Ser202. Hippocampal slice cultures were treated daily with Aβ₄₂ alongside vehicle-treated slices. After 6 days the tissue was gently harvested into groups of 7–9 slices each and equal protein aliquots assessed by immunoblot with antibodies against phospho-tau-Ser^{199/202} and against actin (a). Positions of molecular weight standards are shown. The 55–70-kDa phospho-tau immunoreactivity levels were normalized to within-sample actin measures and plotted as mean percent of control ± SEM (b). Unpaired t-test: ***p < 0.001.

<https://doi.org/10.1371/journal.pone.0182895.g002>

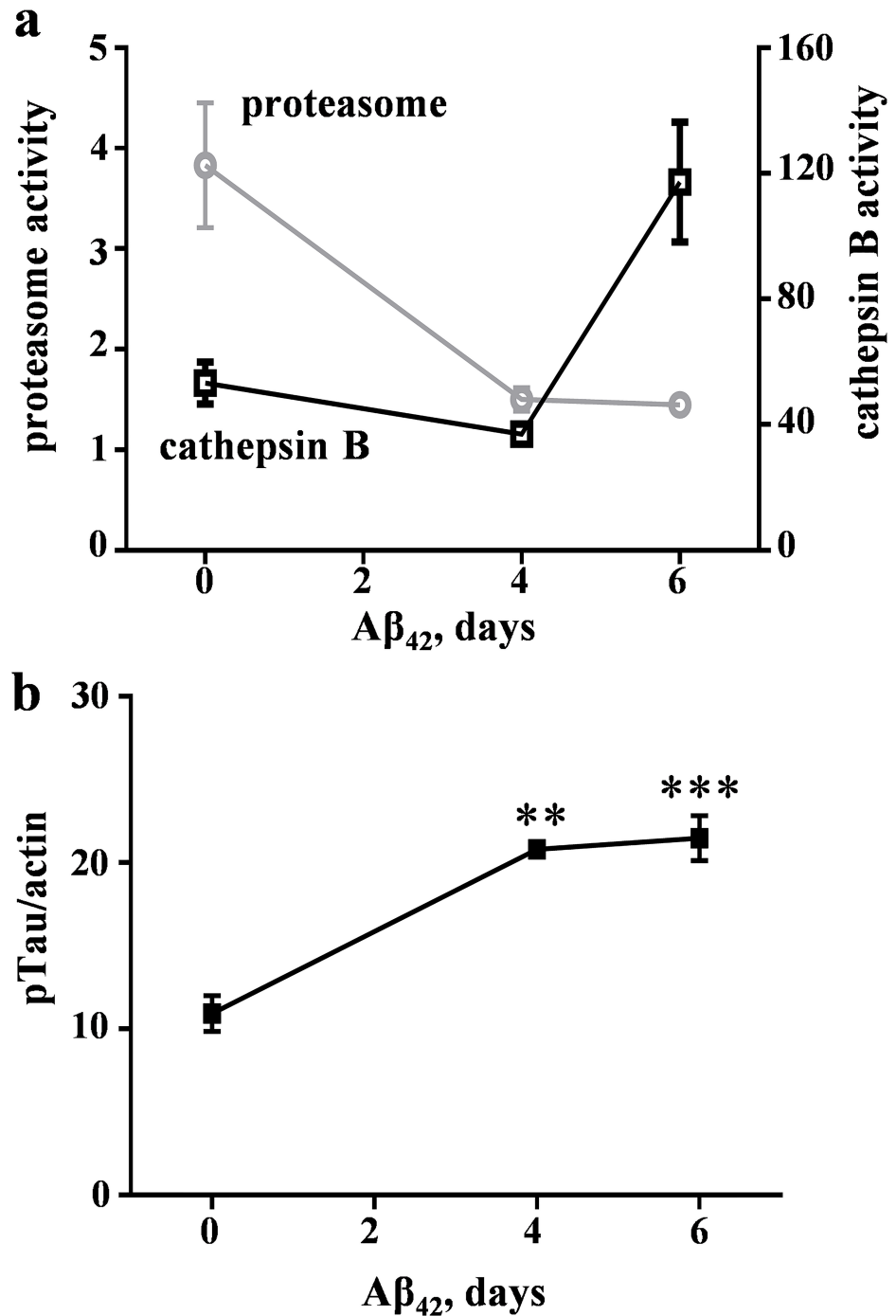


Fig 3. A β_{42} -induced proteasome inhibition is associated with a delayed, inverse effect on CatB activity. Hippocampal slice cultures were treated daily with vehicle for 6 days (0-day control group) or with pre-aggregated A β_{42} for 4–6 days, staggering the treatments in order for same-day harvesting of slice groups of 7–9 each. Proteasome activity (gray plot of mean Vmax/s \pm SEM; ANOVA: $p < 0.01$) and cathepsin B activity (black plot of mean fluorometric units \pm SEM; ANOVA: $p < 0.01$) were measured in equal protein aliquots from the same samples (a). The time-course samples were also assessed for 55–70-kDa pTau-Ser^{199/202} and actin in order to plot the within-sample ratios between the immunoreactivity levels (b; mean \pm SEM). Tukey post hoc tests compared to vehicle-treated slices: ** $p < 0.01$, *** $p < 0.001$.

<https://doi.org/10.1371/journal.pone.0182895.g003>

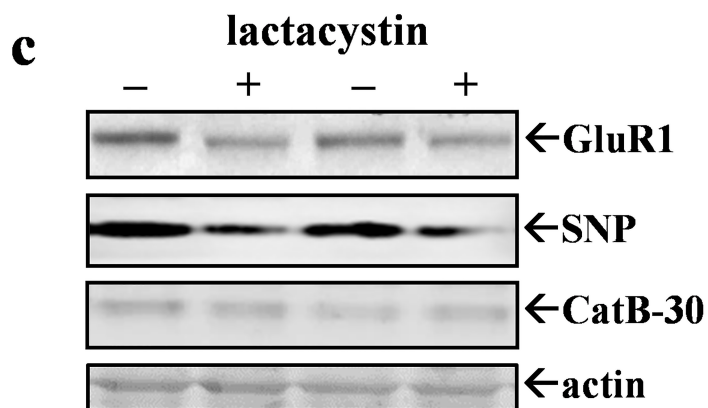
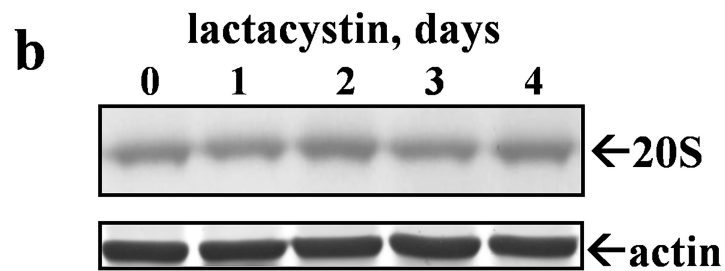
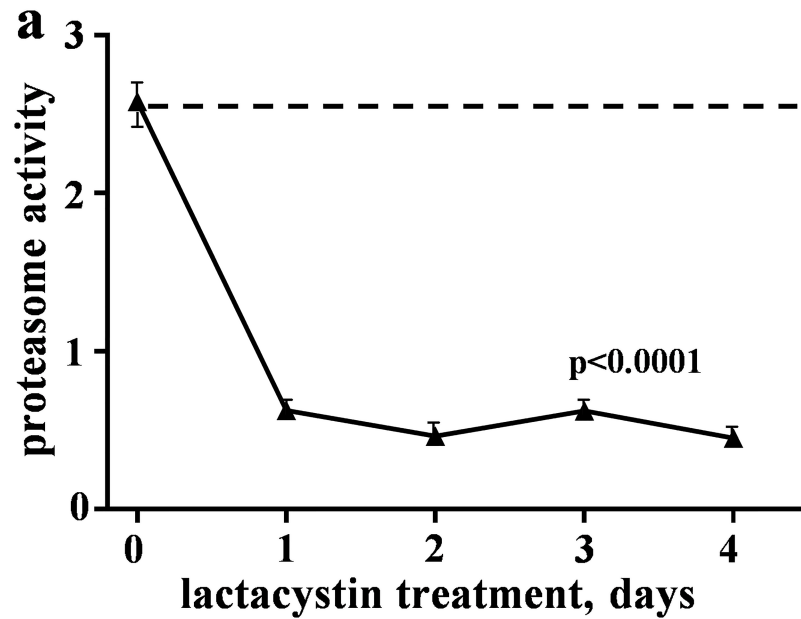


Fig 4. Proteasome activity is blocked by the inhibitor lactacystin in hippocampal slice cultures. The slices were treated daily with vehicle for 4 days (0-day control group) or with 5 μ M lactacystin for 1–4 days, staggering the treatments in order for same-day preparation of slice groups of 7–9 each. Proteasome activity (mean $V_{max}/s \pm SEM$) was measured in control slices harvested at different times (dashed line) and in lactacystin-treated slice samples (a). The time-course data were analyzed by ANOVA ($p < 0.0001$; post hoc tests compared to control: $p < 0.0001$ at all 4 time points). A subset of the samples tested for proteasome

activity was also assessed by immunoblot for the 20S proteasome α-1 subunit (20S) and actin (b), as well as for GluR1, synaptophysin (SNP), the 30-kDa CatB isoform (CatB-30), and again the actin load control (c).

<https://doi.org/10.1371/journal.pone.0182895.g004>

inhibitory action on the proteasome pathway (Table 1). A difference was apparent in that lactacystin elicited earlier CatB up-regulation compared to Aβ₄₂'s effect that was delayed more than 4 days. A 28% increase in CatB activity was found after only the first day of lactacystin treatment (nearing significance with $p = 0.054$), and subsequent treatment days resulted in markedly up-regulated activity, increasing by 62–109% in a time-dependent manner ($p < 0.001$). Note that the increase in CatB activity by lactacystin was not associated with any change in the 30-kDa active isoform of the CatB enzyme (see Fig 4c). The 30-kDa isoform in slice samples with 2–4 days of treatment was $117 \pm 20.3\%$ of control ($n = 7$; N.S.).

The CatB response induced by lactacystin does not appear to correspond with the development of secondary pathology, in this case the delayed loss of synaptic proteins. Enhancement of CatB activity was occurring after 1–2 days of lactacystin treatment (Table 1), whereas the loss of synaptophysin and synapsin IIb in particular did not become evident until slices were treated for 3–4 days (Fig 6a). In the same lactacystin-treated samples tested for proteasome and CatB activities, 46–60% reductions at latter time points were evident by immunoblot staining for synaptophysin ($p = 0.0015$), GluR1 ($p < 0.01$), and synapsin IIb ($p < 0.01$), while no change in synapsin IIa was found (see Fig 6a and 6b). The loss of synapsin IIb is a distinct

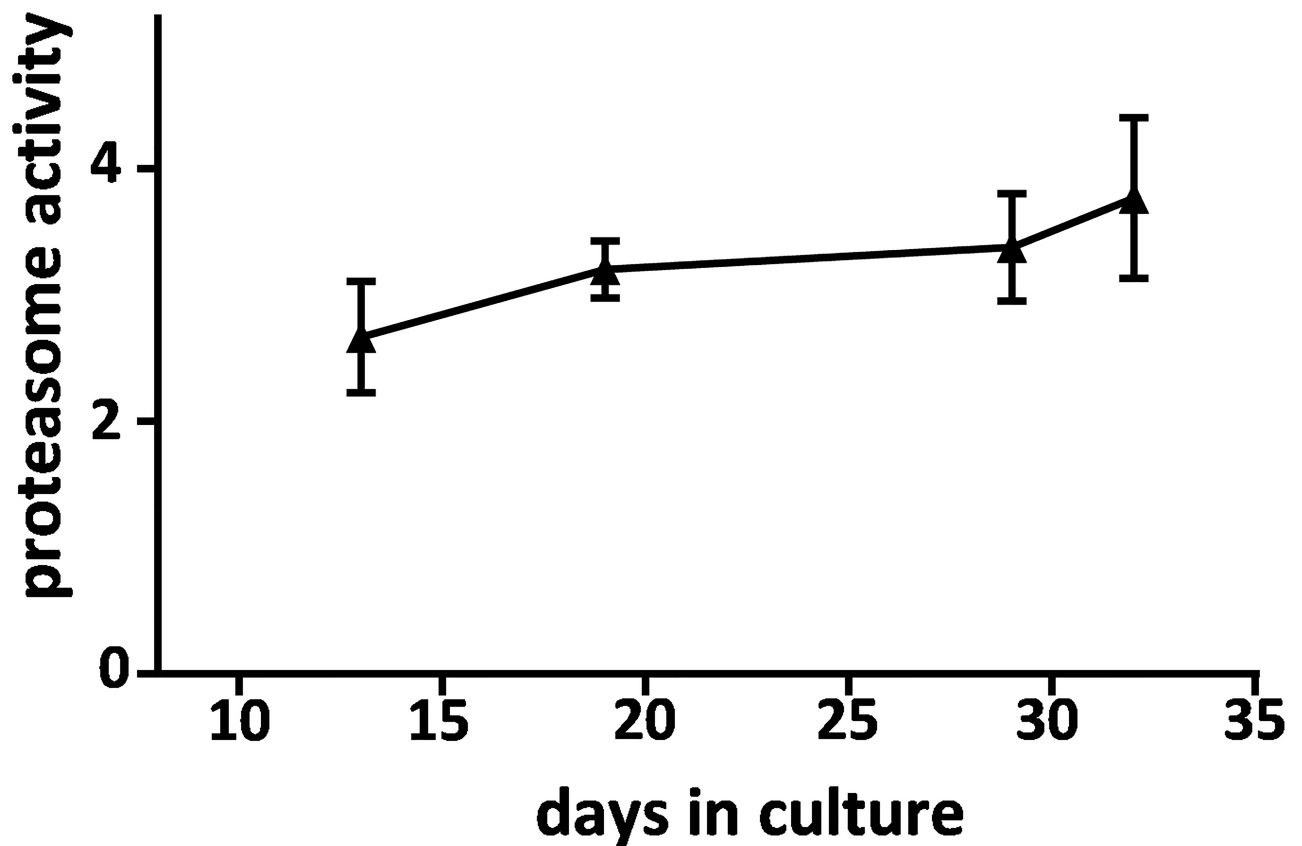


Fig 5. Hippocampal slice cultures exhibit stable proteasomal activity. Proteasome activity was measured with a fluorogenic peptide assay in control hippocampal slices harvested across a wide range of culture days. The mean $V_{max}/s \pm SEM$ data were plotted across days in culture for the different slice samples in order to verify stable maintenance of proteasome function in the tissue model.

<https://doi.org/10.1371/journal.pone.0182895.g005>

Table 1. Lactacystin-induced proteasome inhibition leads to the enhancement of CatB activity.

Treatment	days	CatB activity, percent ± SEM
vehicle	4	100 ± 10.7
lactacystin	1	128 ± 8.7
lactacystin	2	162 ± 10.2*
lactacystin	3	209 ± 20.2***
lactacystin	4	204 ± 4.6***

Hippocampal slice cultures were treated daily with vehicle for 4 days or with 5 μM lactacystin for 1–4 days, staggering the treatments in order for same-day preparation of slice groups of 7–9 each. CatB activity was measured in equal protein aliquots of samples and fluorometric units were normalized to vehicle-treated control samples. Tukey post hoc tests compared to vehicle treatment:

*p = 0.028.

***p < 0.001.

<https://doi.org/10.1371/journal.pone.0182895.t001>

indicator of synaptic decline induced by lactacystin since Aβ₄₂ had little to no effect on synapsin II isoforms (data not shown) as previously reported [50]. This more extensive effect on synaptic integrity may be due to lactacystin causing more proteasomal inhibition than Aβ₄₂, noting that the residual proteasome activity (~50%) after 4 days of Aβ₄₂ treatment was blocked to the level of 98.5% inhibition when lactacystin was included during the Aβ₄₂ incubation. Also distinctive to lactacystin was the strong relationship between levels of the two susceptible markers, synapsin IIb and synaptophysin (Fig 6c; correlation coefficient of 0.913) across a set of treatment samples, whereas no relationship was evident between synapsin IIa and synaptophysin (Fig 6d).

Since proteasomal inhibition by two different stressors, Aβ₄₂ and lactacystin, led to increased CatB activity, we next tested whether enhancing CatB leads to reduced proteasome activity to follow the inverse relationships identified in the above experiments. From the screening of compounds that target CatB and related proteases (Table 2), those with very weak abilities to inhibit CatB curiously exhibited the ability to up-regulate levels of the 30-kDa active CatB isoform in hippocampal slices. Of note, modest dose-dependent increases were found with E64d (ANOVA: p < 0.0001) and Cathepsin Inhibitor 1 (p = 0.0018). Z-Phe-Ala-diazomethylketone (PADK) at 1–10 μM caused a 3- to 6-fold selective increase in CatB-30 (ANOVA: p < 0.0001) compared to unchanged synaptic markers (see Fig 7a) and the actin load control (not shown), as also previously reported for CatB activity in *in vitro* and *in vivo* studies [35, 47]. Thus PADK was chosen as a very effective CatB-enhancing agent to be used to test for inverse effects on the protein clearance pathways. When a set of hippocampal slice cultures were treated with 3 μM PADK and subsequently washed and assessed for both proteasomal and CatB proteolytic activities, a significant two-fold increase in CatB activity was found (Fig 7b, left bars) which was blocked if the PADK incubation included the potent CA074 inhibitor of CatB (not shown). With regards to proteasomal function, rather than a decrease for an inverse effect with respect to the CatB modulation, PADK elicited a 15% increase in proteasome activity, albeit not quite statistically significant (Fig 7b, right bars).

In contrast to the inverse effects that Aβ₄₂ and lactacystin produced on the proteasomal and lysosomal pathways, the CatB positive modulator PADK did not produce such results since it clearly did not have a negative effect on proteasome function (Fig 7c). Surprisingly, PADK's small enhancing effect on proteasome activity was much more pronounced in hippocampal slices that were treated for 6 days with Aβ₄₂ peptide. The Aβ₄₂-compromised proteasome activity (65% reduction) was improved more than two-fold by the co-application of PADK

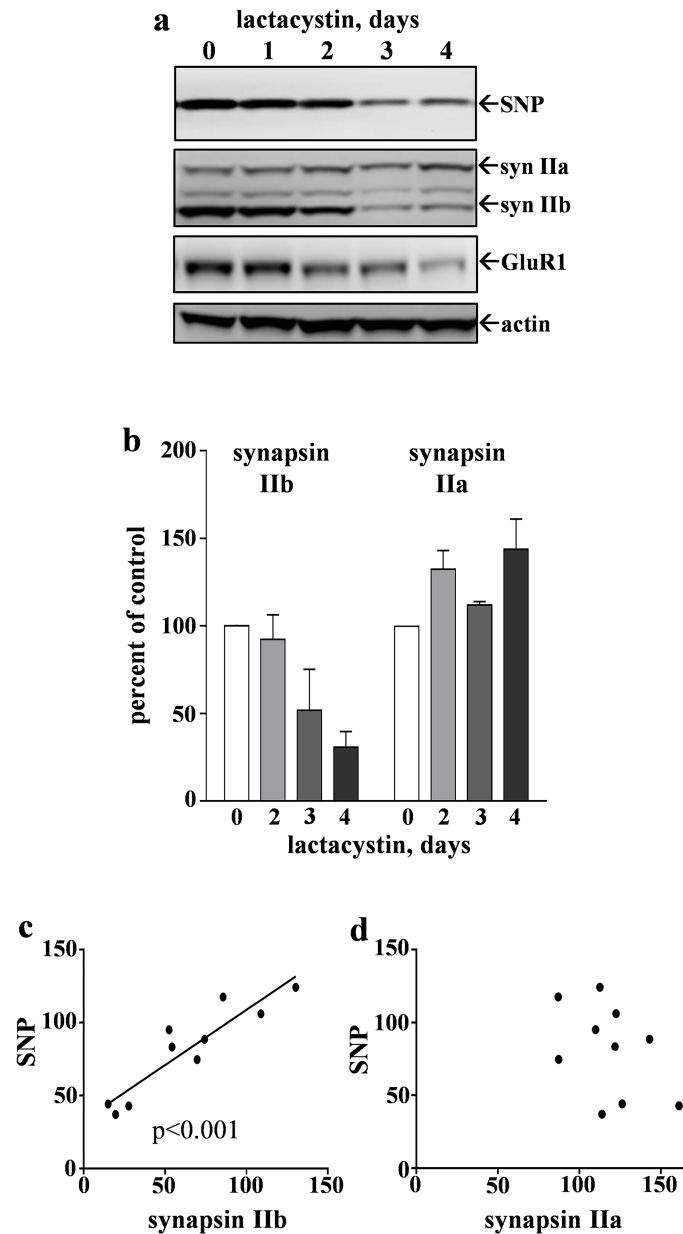


Fig 6. The proteasome inhibitor lactacystin causes delayed synaptic marker loss in hippocampal slice cultures. The hippocampal slices were treated daily with vehicle for 4 days (0-day control group) or with 5 μM lactacystin for 1–4 days, and treatments were staggered for same-day harvesting of 7–9 slices per group. The samples were assessed by immunoblot (a), staining the proteins synaptophysin (SNP), synapsin IIa (syn IIa) and IIb (syn IIb), GluR1, and actin. Mean synapsin levels were normalized to their respective controls and percent ± SEM values are shown for the time points with distinct effects between the two isoforms (b). Across the set of immunoblot samples, the levels of synaptophysin were plotted against the within-sample measures of synapsin IIb (c) and synapsin IIa (d). Linear regression analysis was conducted (c: R = 0.913, p < 0.001; d: R = -0.430, N.S.).

<https://doi.org/10.1371/journal.pone.0182895.g006>

during the entire 6-day protocol (Fig 8a), reaching levels comparable to those in control slice cultures. From the statistical test, pre-aggregated Aβ₄₂ was unable to produce a significant decline in proteasomal function in the presence of 3 μM PADK. It was also determined that PADK uniquely modulates the proteasome protein clearance pathway in Aβ₄₂-treated brain

Table 2. Among screened compounds, PADK was chosen as an effective CatB-enhancing agent for further testing in the hippocampal slice model.

compound	CatB-30, percent ± SEM (n)	IC ₅₀ for CatB, μM
vehicle control	100.0 ± 4.0 (11)	–
PADK 1 μM	340.0 ± 38.7 (4)**	9–11 (from ref. [35])
3 μM	462.1 ± 95.8 (6)***	
10 μM	649.1 ± 74.5 (9)***	
SD1002 10 μM	345.0 ± 13.3 (4)**	>50 (from ref. [39])
E64d 1 μM	115.0 ± 9.2 (4)	14 (from ref. [53])
3 μM	122.2 ± 17.7 (3)	
10 μM	176.1 ± 12.5 (6)***	
E64 0.03–0.05 μM	144.0 ± 12.3 (4)*	0.03 (from ref. [54])
1–2 μM	111.5 ± 7.5 (4)	
Cathepsin Inhibitor-1 0.3–1 μM	120.9 ± 16.4 (3)	weak inhibitor (from ref. [55])
10 μM	149.4 ± 14.3 (3)**	
CA074 0.05 μM	89.0 ± 15.9 (3)	0.004 (from refs. [53, 54])
0.3–1 μM	95.3 ± 11.9 (3)	
CA074me 0.3–1 μM	116.0 ± 9.2 (6)	0.12 (from ref. [35])
lactacystin 5 μM	117.0 ± 20.3 (7)	>100 (from ref. [56])

The slice cultures were treated daily with vehicle or with the noted concentrations of selected compounds for 2–3 days. Tissue was then collected into slice groups of 7–9 each for immunoblot analysis. Detection of the 30-kDa CatB isoform (CatB-30) was measured in equal protein aliquots of samples and normalized to vehicle-treated control samples. Unpaired t test compared to vehicle treatment:

*p<0.05.

ANOVA multiple comparison tests compared to vehicle control:

**p<0.01.

***p<0.001.

A wide range of IC₅₀ values for inhibiting CatB activity is provided for the ineffective to very effective compounds, obtained from the listed references.

<https://doi.org/10.1371/journal.pone.0182895.t002>

tissue since the lactacystin-treated slices, those exhibiting more proteasomal inhibition than that produced by Aβ₄₂, were unaffected by PADK with regards to recovery of proteasome function (Fig 8b).

Since pre-aggregated Aβ₄₂ caused a delayed increase in CatB activity with no evidence of recovery regarding proteasome activity (see Fig 3a), we tested whether PADK can improve proteasome function when applied in a delayed manner, being administered after the first 3 days of the 6-day Aβ₄₂ treatment protocol. As with continuous exposure, the delayed application of 3 μM PADK was still able to attenuate the Aβ₄₂-induced decline in proteasome activity (Fig 9a). In association with the nearly two-fold improvement in proteasomal function, the active CatB-30 isoform was also up-regulated when daily inclusion of PADK was delayed 3 days (Fig 9b). Of particular note, the 6-day Aβ₄₂ treatment alone did not affect CatB-30 levels. Thus, the up-regulation of CatB activity by both Aβ₄₂ and lactacystin occurs independent of altered CatB-30 levels, indicating a distinct mechanistic difference compared to PADK's robust increase in the active CatB isoform in association with activity modulation.

In the Aβ₄₂-treated hippocampal slice cultures, the PADK compound had a positive influence on both the proteasome system and the CatB enzyme of the autophagic-lysosomal system. Accordingly, the experimental samples were also tested for PADK effects on the indications of Aβ₄₂-induced secondary pathology in the slice model. As shown in Fig 10a, PADK reduced

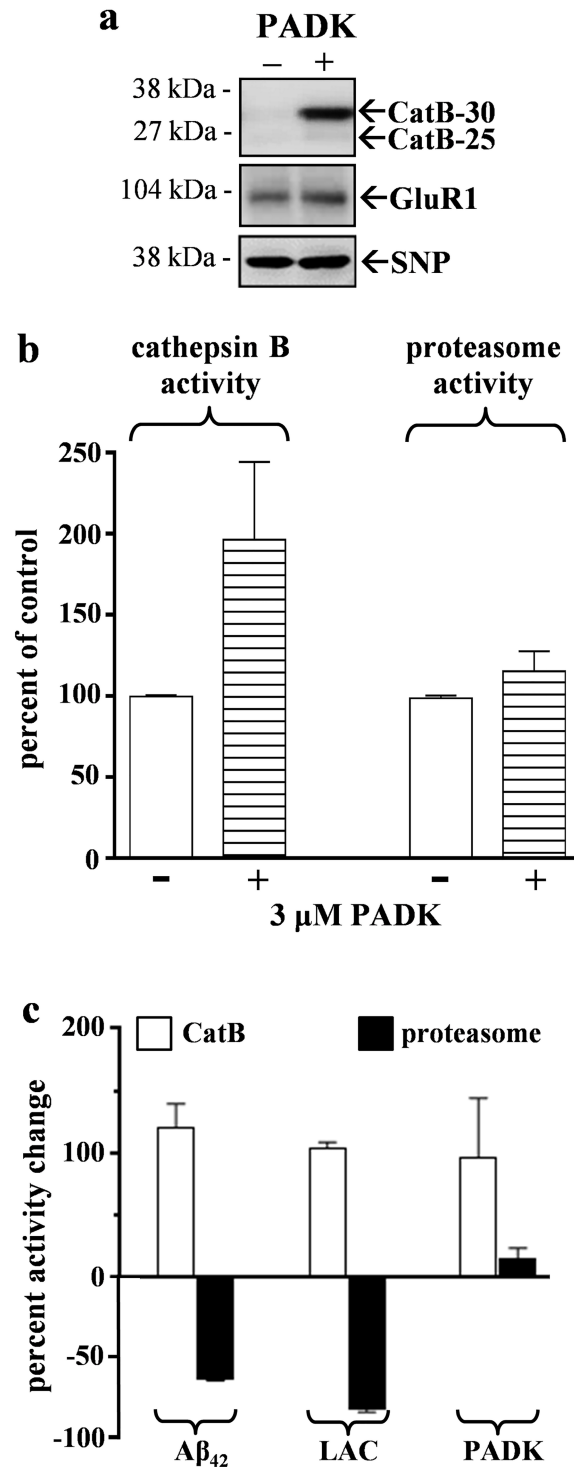


Fig 7. The effective CatB-enhancing agent PADK (chosen from Table 2) selectively enhances CatB activity in hippocampal slice cultures. The slice cultures were treated daily with vehicle or 3 μM PADK for 2 days before being collected into slice groups of 7–9 each. Panel a: Immunoblot assessments stained the 30- and 25-kDa CatB isoform (CatB-30 and CatB-25), GluR1, and synaptophysin (SNP). Panel b: Fluorogenic peptide assays assessed the harvested slice samples for cathepsin B and proteasome chymotrypsin-like activities. The two measures were normalized to their respective vehicle control groups (mean ± SEM). Cathepsin B activity exhibited a significant increase, whereas proteasome activity exhibited only a small

increase. Panel c: Percent changes in CatB (white) and proteasome (black) activities compared to control are shown for 6-day A β_{42} treatment (from Fig 3a data), for 4-day lactacystin treatment (from Fig 4a and Table 1 data), and for 2-day PADK treatment (from Fig 7b data).

<https://doi.org/10.1371/journal.pone.0182895.g007>

tau phosphorylation mediated by the low-concentration A β_{42} incubations, perhaps due to multiple influences on protein clearance pathways. The hippocampal slices treated with pre-aggregated A β_{42} exhibited a two-fold increase in levels of phospho-tau-Ser^{199/202} and these levels were reduced by nearly 50% when PADK was present during the 6-day A β_{42} treatment period (Fig 10b). Additionally, the decrease in phospho-tau species corresponds with PADK's enhancement of the active CatB isoform and improved levels of synaptic markers (Fig 10c). Hence, enhancement of the crosstalk that occurs in response to proteasomal stress appears to govern secondary events linked to A β_{42} pathology (see Fig 11).

Discussion

In this study, low-level A β_{42} reduced proteasome activity in slice cultures from the hippocampus, a brain region vulnerable to AD, and the proteasomal compromise was associated with increased levels of phosphorylated tau species. These results indicate that AD-related proteasome dysfunction may be due to alterations in regulatory factors of the ubiquitin-proteasome system, leading to protein accumulation stress and perhaps neurofibrillary pathology. The important proteasome pathway has previously been shown to efficiently degrade misfolded and ubiquitinated proteins [57], and functional impairment of proteasomes impacts aging and age-related neurodegenerative diseases [1, 14, 13]. From the current results, proteasome dysfunction appears to tie together two key components of AD multi-proteinopathy, the A β_{42} peptide and tau, while leading to synaptic marker reductions in the slice model. The A β_{42} peptide was self-aggregated before being applied to the cultured brain tissue in order to resemble the oligomeric species present in AD brains. Note that A β_{42} oligomers, but not the monomeric form, were found to cause significant inhibition in a cell-free proteasome assay [16]. In the hippocampal slice model, the proteasomal protein clearance pathway is distinctly vulnerable to A β_{42} as compared to a lysosomal enzyme (CatB) that was not disrupted by the oligomerized peptide. Similar to A β_{42} treatment, disrupting the proteasomal pathway with the inhibitor lactacystin also led to secondary pathology in the hippocampal slices as indicated by the loss of synaptic proteins. Also common between A β_{42} and lactacystin, they both triggered a distinct type of lysosomal response involving the CatB enzyme.

The importance of protein clearance systems in AD is noted by the fact that A β peptides exhibit decreased clearing rates in the disease [44]. As suggested by the present results, early A β_{42} oligomerization may gradually disrupt proteasome function and thereby lead to reduced clearance of APP fragments, A β peptides, tau species, and perhaps other proteins involved in AD-related protein accumulation pathology. A β_{42} -induced synaptic decline in the slice cultures may be partly an indirect effect mediated by proteasome inhibition since both A β_{42} and lactacystin caused significant reductions in synaptic proteins. Such loss of synaptic markers by low-concentration A β_{42} was found previously with regards to pre- and postsynaptic constituents found reduced in AD [50]. Additionally, lactacystin has been shown to induce another type of protein accumulation pathology in which the proteasome inhibitor was administered intranigally for a mouse model of Parkinson's disease [58]. The evidence linking a compromised proteasome system with synaptic pathology adds to studies showing that proteolysis through proteasomes is important for synaptic mechanisms and plasticity processes [51]. A series of steps may underlie the synaptopathogenesis [45], perhaps initiated by cellular internalization of the applied A β_{42} [59], the intraneuronal oligomers subsequently inducing tau

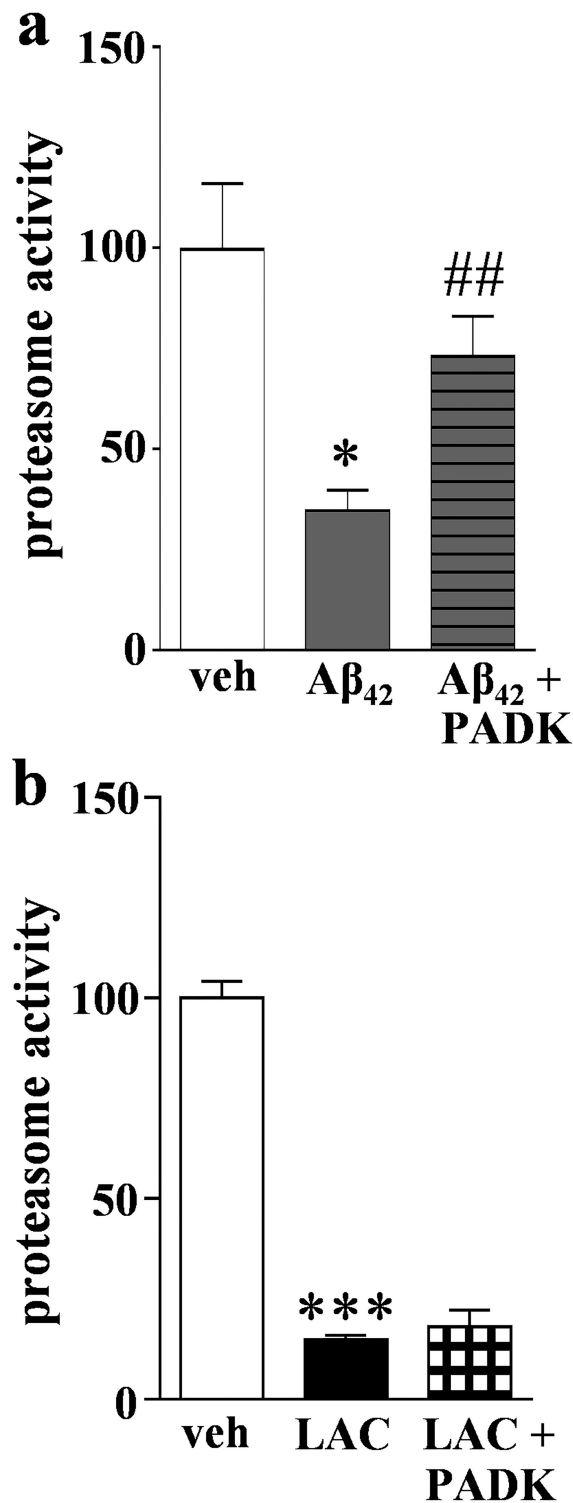


Fig 8. The CatB-enhancing compound PADK positively modulates the proteasome pathway in A β_{42} -treated hippocampal slice cultures. Panel a: Slice cultures were treated daily with vehicle (veh) or 1.5 μ M pre-aggregated A β_{42} for 6 days, or they were pre-treated with 3 μ M PADK for 1 day before starting the 6 daily A β_{42} treatments in combination with 3 μ M PADK. Proteasome activity was measured with a fluorogenic peptide assay and Vmax/s measures were normalized to vehicle-treated samples (mean \pm SEM). Unpaired t test compared to control: *p = 0.0196; compared to A β_{42} alone: ##p = 0.027. Panel b: Slice cultures were treated with vehicle (veh), 10 μ M lactacystin (LAC), or with 10 μ M LAC in the presence of PADK for 2 days. Proteasome activity was assessed in harvested slices and measures were normalized to vehicle-treated samples (mean \pm SEM). Unpaired t test compared to vehicle control: ***p < 0.0001.

<https://doi.org/10.1371/journal.pone.0182895.g008>

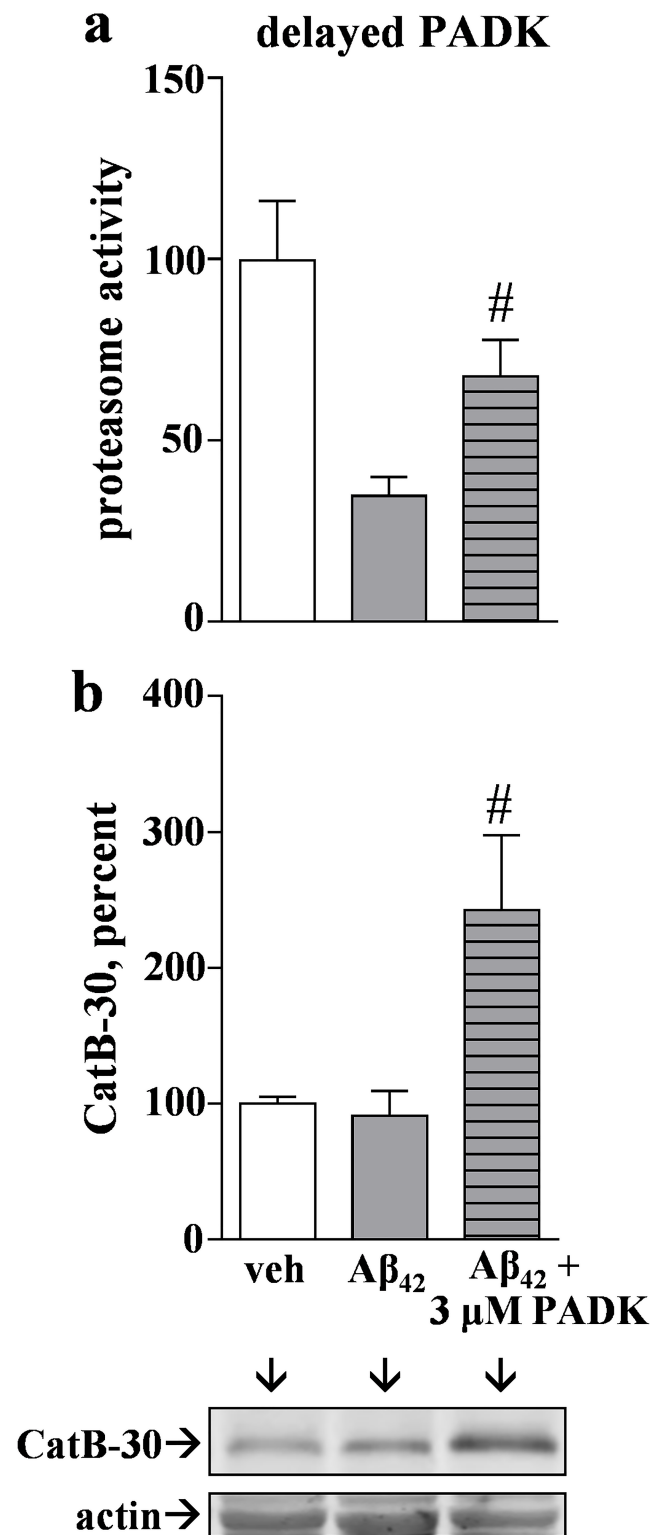


Fig 9. A β_{42} -induced decline in proteasome activity is diminished by delayed PADK treatment. Panel a: Hippocampal slice cultures were treated daily with vehicle (veh) or 1.5 μ M A β_{42} for 6 days, or they were subjected to the 6 daily A β_{42} treatments but 3 μ M PADK was included during the last 3 days of A β_{42} incubations. Proteasomal activity used a fluorogenic peptide assay in harvested slice samples and Vmax/s measures were normalized to vehicle-treated control samples (mean \pm SEM). Panel b: The harvested samples were also assessed by immunoblot for the 30-kDa active CatB isoform (CatB-30) and the actin load control. Mean CatB-30 levels were normalized to control values and percent \pm SEM values are shown. Unpaired t tests compared to A β_{42} alone: #p<0.05.

<https://doi.org/10.1371/journal.pone.0182895.g009>

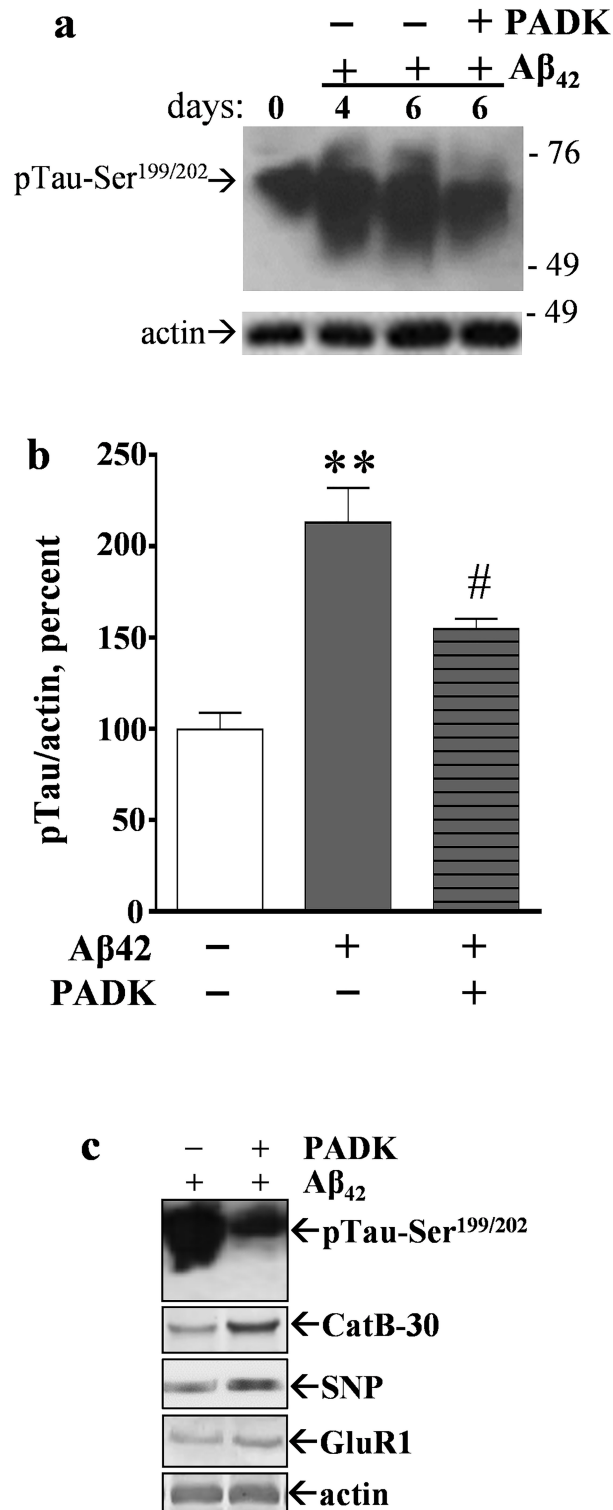


Fig 10. Aβ₄₂-induced increase in phosphorylated tau is attenuated by PADK. Hippocampal slice cultures were treated daily with vehicle for 6 days (0-day control) or with 1.5 μM pre-aggregated Aβ₄₂ for 4–6 days in the absence or presence of 3 μM PADK. The treatment schedule was staggered in order for same-day harvesting of 7–9 slices per group. Equal protein aliquots of the slice samples were assessed by immunoblot with antibodies against phospho-tau-Ser^{199/202} and against actin (a). Positions of molecular weight standards of 49–76 kDa are shown on the right. Integrated optical densities were measured and within-sample ratios between the two antigens were plotted for the 6-day treatments (b); note that the ratios were normalized to vehicle-treated samples (mean ± SEM). Unpaired t tests compared to vehicle control: **p<0.01; compared to

Aβ₄₂ alone: #p<0.05. Additional immunoblot samples were stained for phospho-tau-Ser^{199/202}, the 30-kDa CatB isoform (CatB-30), synaptophysin (SNP), GluR1, and actin (c).

<https://doi.org/10.1371/journal.pone.0182895.g010>

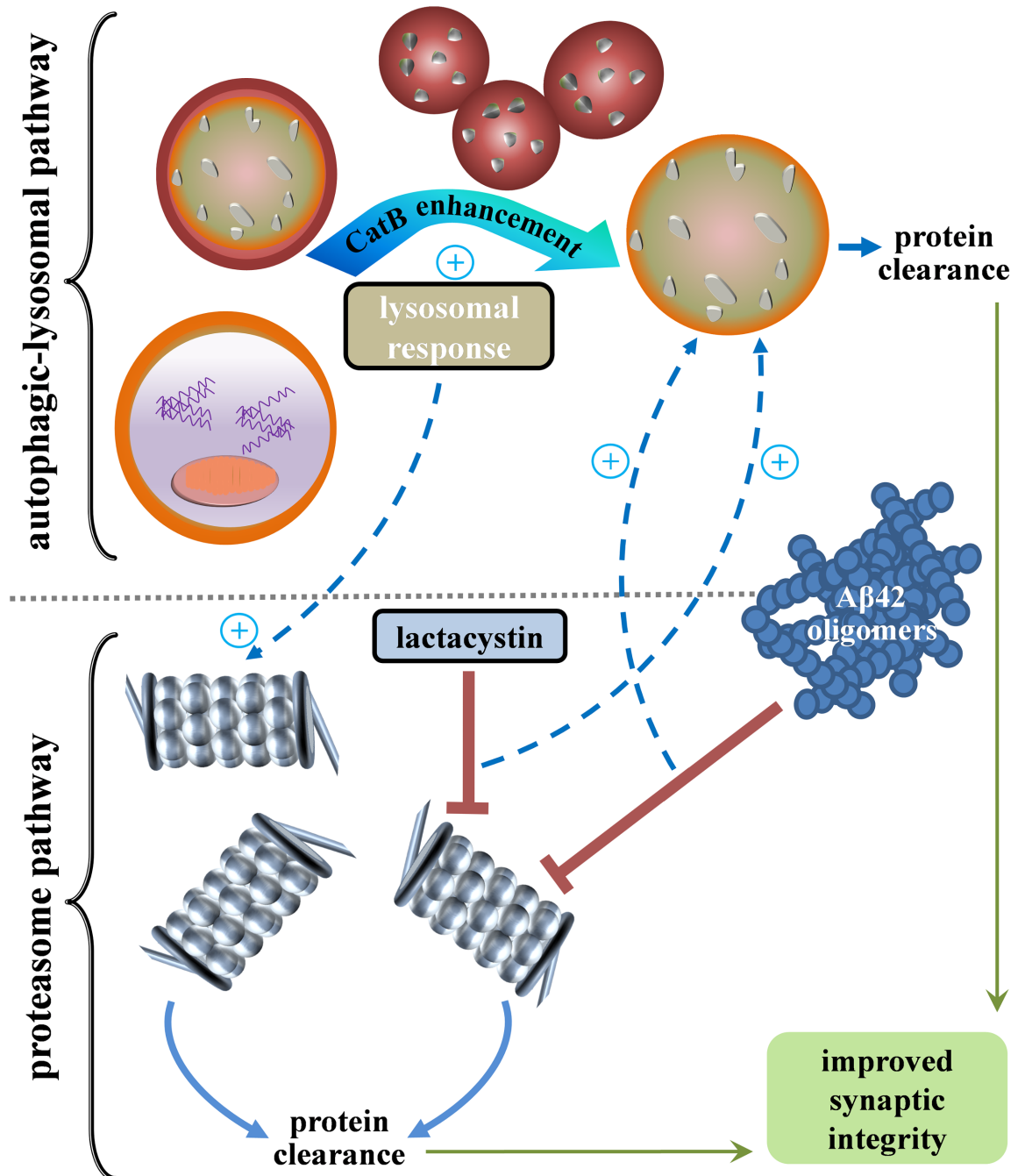


Fig 11. Model of the putative crosstalk between the two major protein clearance pathways. The autophagic-lysosomal system consists of autophagosomes, endosomes, primary lysosomes, and secondary lysosomes. The proteasomal system is composed of multimeric complexes with a catalytic core and regulatory subunits. Oligomerized Aβ₄₂ and lactacystin elicit proteasomal inhibition which is linked to positive crosstalk with a component of the lysosomal pathway. Enhancing such compensatory lysosomal responses with a CatB-enhancing agent also leads to positive crosstalk back to the proteasome system.

<https://doi.org/10.1371/journal.pone.0182895.g011>

pathology [60, 61], and altered tau species then interfering with proteasome function [14, 15]. It is feasible that the different protein accumulation events act synergistically on a variety of cellular mechanisms to disrupt synaptic integrity (e.g., through microtubule destabilization, impaired cellular transport, axonopathy, and/or ion channel deregulation).

Interestingly, the negative effect A β_{42} had on proteasomes was associated with a delayed enhancement of the lysosomal system in the form of an increase in CatB activity 6 days after initiating the A β_{42} treatment. When assessing the two protein clearance pathways after 4 days with A β_{42} , the proteasome pathway appears to be selectively targeted since no change in CatB activity was evident in the slice cultures. The proteasome inhibition produced after 4–6 days of A β_{42} incubations was associated with synaptic marker loss and increased levels of phospho-tau. Noting that the up-regulation of CatB activity did not correspond with the initial elevation of pTau-Ser^{199/202} species, perhaps the delayed CatB response is only triggered by the subsequent higher levels of phospho-tau or by some interaction between the applied A β_{42} oligomers and the induced tau deposition that requires extra time to manifest. Note that human neuroblastoma cells treated with A β_{42} also exhibited proteasome inhibition and deregulation of the autophagic-lysosomal pathway, the latter confirmed by increased cathepsin activity [17]. In addition, treatment with A β_{42} but not A β_{40} was shown to increase both CatB mRNA and enzyme activity in the mouse N2A neuronal cell line [31]. A β_{42} levels 10–20 times higher than what was used here were found to elicit earlier cathepsin responses in slice and neuronal cultures [29, 31]. Thus, A β_{42} at a concentration more relevant to human AD points to proteasomal compromise as being associated with a delayed lysosomal response.

A positive CatB response was evident when proteasomes were disrupted by either A β_{42} or lactacystin in hippocampal slices, thus furthering the idea that the proteasomal and lysosomal systems are not independent protein clearance pathways. In both cases, the proteasomal dysfunction resulted in enhanced levels of lysosomal CatB activity. As previously noted, the two pathways appear to interact and the resulting crosstalk between proteasomes and the autophagy-lysosomal system may work to maintain protein homeostasis [12, 19, 21, 32]. The up-regulated CatB activity, induced by either A β_{42} or lactacystin, did not appear to correspond with secondary events of phospho-tau accumulation or synaptic marker reductions. Moreover, when CatB was enhanced with a selective modulator, no evidence of synaptic decline occurred when the compound was applied to hippocampal cultures alone, and it elicited protection of proteasome function and reduction in secondary pathology in the A β_{42} -treated slice cultures. Note that the delayed CatB enhancement induced after 6 days of A β_{42} exposure may have in fact slowed the rate of tau changes since no further increase in phospho-tau levels was evident between 4 and 6 days of A β_{42} treatment. The PADK CatB-enhancing compound was more protective with regards to the tau alterations, perhaps due to its unique ability to greatly increase levels of the active CatB isoform. The modulation of CatB activity stemming from A β_{42} - and lactacystin-induced proteasomal stress transpires independent of any evident changes in the CatB-30 isoform. The noted modulation events are indicative of positive crosstalk between the major protein clearance systems, as depicted in Fig 11, to potentially reduce protein accumulation stress and attenuate the pathogenic cascade that leads to synaptic dysfunction [45, 62]. Compensatory activation of a lysosomal enzyme may be in response to A β_{42} itself or through positive crosstalk stemming from the A β_{42} -induced proteasomal stress.

Different types of protein accumulation stress have been shown to increase CatB levels in research models [29, 31]. Many questions obviously remain regarding CatB, particularly since the protease has been suggested to be a biomarker of AD as higher CatB protein levels were found in serum and plasma samples from persons with AD [63, 64]. However, recent work with human AD hippocampal samples did not show a correlation between CatB and the degree of AD pathology [65]. In their study, laser-captured CA1 pyramidal neurons from cases

assigned a Braak stage III diagnosis exhibited a 35% increase in CatB protein as compared to nondemented control groups, whereas a smaller, insignificant change in CatB was found in neurons from the more severe Braak stage V. Thus, the reported higher CatB levels in AD may be an indication of a compensatory lysosomal response, and perhaps the weaker response in more severe cases explains an increased vulnerability that leads to worsening cognition and higher Braak rating. Note that compensatory responses are likely vital to maintain protein homeostasis and may act to slow protein accumulation pathology, perhaps explaining the slow nature of AD that tends to gradually worsen over 5–20 years in some individuals. In fact, indicators of protein accumulation stress in the AD brain include the induction of the autophagy-lysosomal pathway as well as impairment in lysosomal maturation [6, 7]. Also considering the compensatory lysosomal response, any depletion in such responses by a protein clearance pathway would lead to increased vulnerability to pathogenic protein accumulation. Two reports indicate that compensatory responses by lysosomes are diminished or absent in aged animals. In hAPP mice with amyloidogenic events, CatB activity was increased in the hippocampus of young and middle-aged animals, but not in the elderly hAPP mice [31]. In a rat model of proteasome stress, compensatory crosstalk between the proteasome system and the autophagy-lysosome pathway was found in young but not aged rats, and restoration of protein homeostasis occurred only in hippocampal neurons of the young animals [32]. Thus, age-related changes in lysosomal compensatory responses may explain why age is a major risk factor of AD.

In regards to plasma CatB levels leading some to speculate a link to AD cognitive pathology, a more recent study found the opposite in monkeys and humans in which treadmill exercise elevated CatB in plasma and, moreover, the resulting CatB enhancement correlated with improved hippocampal-dependent memory [66]. These findings are consistent with animal models and human research indicating that physical activity can significantly offset the progressive loss of hippocampal function and prevent or delay the onset of age-related disorders like AD and AD-related dementias [67].

The CatB-enhancing PADK compound is a very weak cathepsin B and L inhibitor that augments the active mature form of CatB when applied to the hippocampal cultures alone. In regards to protein accumulation stress in the slice model, the PADK treatment reduced the A β_{42} -mediated phospho-tau accumulation and associated synaptic decline. If the CatB up-regulation in response to A β_{42} -induced proteasomal stress is part of a compensatory feedback pathway, then it stands to reason that a compound that promotes the compensating signal would further protect against secondary pathology linked to the disrupted proteasomes. It is noteworthy that other weak cathepsin inhibitors were also found to up-regulate active CatB including *i*) SD1002, a nonpeptidic PADK analogue previously shown to promote A β_{42} clearance and synaptic integrity in AD mice [39], *ii*) Cathepsin Inhibitor-1, a broad inhibitor of papain and cathepsins B, G, L, and S, and *iii*) E64d, a membrane-permeable inhibitor of several cysteine proteases that has been reported to inhibit CatB to reduce A β and improve memory in APP mice [42]. However, studies also indicate that the latter compound blocks both the calcium-activated protease calpain and CatB to protect against other neuropathogenic insults [53, 68] and can elicit neuroprotection through a CatB-independent pathway [69]. The positive response through CatB may be an influential factor in AD pathogenesis, allowing the lysosomal system to play an important role in governing A β pathology. While there is conflicting evidence regarding CatB in the development of AD, it should be pointed out that *i*) CatB was found to cleave A β_{42} into less amyloidogenic species [31], *ii*) the C-terminally truncated products A β_{38} and A β_{33} appear to be selectively cleaved from A β peptides by purified CatB [31, 34], and *iii*) production of the A β_{38} product corresponds with improved A β_{42} clearance in transgenic mice treated with the CatB-enhancing compound PADK [35]. A β peptides were also

reduced by genetic and pharmacological avenues that increase CatB activity in mice expressing hAPP with AD-linked mutations [31, 35, 37–39, 41, 48] or wild-type hAPP [40], as well as in neural progenitor cell-derived neurons expressing mutant hAPP [41]. As mentioned, induction of the autophagy-lysosomal pathway has long been suggested as being neuroprotective against protein accumulation disorders. The very weak inhibitors appear to promote CatB maturation and may provide dual modulation of the separate systems for clearance of pathogenic proteins.

The results in this study suggest that AD-related proteasomal stress contributes to distinct protein accumulation pathology. Age-related protein accumulation events may create circumstances that strain the proteasomal system, leaving the brain more vulnerable to AD-type pathogenesis. If proteasome function is in fact vulnerable to the early buildup of A β ₄₂ in AD, protective modulation of the proteasomal system would be a viable treatment strategy. It is of interest that the lysosomal system responds to proteasome inhibition and that a CatB-enhancing agent elicits recovery of proteasomal function. Note that the autophagy-lysosomal system has long been considered a major factor for neuronal health and that induction of this lysosome-mediated degradative pathway is often found to be protective in animal models of neurodegenerative diseases [18, 19, 22, 24, 70]. The current findings further support the idea that interactions occur between the proteasome system and the lysosomal protein clearance system during episodes of protein accumulation stress. Together, the two pathways make up a complimentary network for cell homeostasis, and modulated balancing between the two pathways through compensatory responses is a likely cellular attribute for maintaining consistent clearing of old and mis-folded proteins.

Acknowledgments

We thank Heather Romine, Manager of the William C. Friday Laboratory, Sarah Hafner-Ruiz, and Michael Tyler Bullock for excellent technical assistance, and Vladimir Ghukasyan for helpful confocal microscopy and imaging.

Author Contributions

Conceptualization: Karen L. G. Farizatto, Merari F. R. Ferrari, Ben A. Bahr.

Data curation: Karen L. G. Farizatto, Uzoma S. Ikonne, Michael F. Almeida, Ben A. Bahr.

Formal analysis: Karen L. G. Farizatto, Michael F. Almeida, Ben A. Bahr.

Funding acquisition: Karen L. G. Farizatto, Merari F. R. Ferrari, Ben A. Bahr.

Methodology: Karen L. G. Farizatto, Uzoma S. Ikonne, Michael F. Almeida, Ben A. Bahr.

Project administration: Merari F. R. Ferrari.

Supervision: Uzoma S. Ikonne, Merari F. R. Ferrari, Ben A. Bahr.

Validation: Michael F. Almeida.

Writing – original draft: Karen L. G. Farizatto, Ben A. Bahr.

Writing – review & editing: Karen L. G. Farizatto, Ben A. Bahr.

References

1. Carrard G, Bulteau AL, Petropoulos I, Friguet B. Impairment of proteasome structure and function in aging. *Int J Biochem Cell Biol.* 2002; 34: 1461–1474. PMID: [12200039](#)
2. Keller JN, Gee J, Ding Q. The proteasome in brain aging. *Ageing Res Rev.* 2002; 1: 279–293. PMID: [12039443](#)

3. Li XJ, Li S. Proteasomal dysfunction in aging and Huntington disease. *Neurobiol Dis.* 2011; 43: 4–8. <https://doi.org/10.1016/j.nbd.2010.11.018> PMID: 21145396
4. Nixon RA, Yang DS. Autophagy and neuronal cell death in neurological disorders. *Cold Spring Harbor Perspect Biol.* 2012; 4: a008839. <https://doi.org/10.1101/cshperspect.a008839> PMID: 22983160
5. Bateman RJ, Xiong C, Benzinger TL, Fagan AM, Goate A, Fox NC, et al. Clinical and biomarker changes in dominantly inherited Alzheimer's disease. *N Engl J Med.* 2012; 367: 795–804. <https://doi.org/10.1056/NEJMoa1202753> PMID: 22784036
6. Nixon RA, Wegiel J, Kumar A, Yu WH, Peterhoff C, Cataldo A, et al. Extensive involvement of autophagy in Alzheimer disease: an immuno-electron microscopy study. *J Neuropathol Exp Neurol.* 2005; 64: 113–122. PMID: 15751225
7. Nixon RA. Autophagy, amyloidogenesis and Alzheimer disease. *J Cell Sci.* 2007; 120: 4081–4091. PMID: 18032783
8. Wang C, Telpoukhovskaia MA, Bahr BA, Chen X, Gan L. Endo-lysosomal dysfunction: a converging mechanism in neurodegenerative diseases. *Current Opinion Neurobiol.* 2017; in press.
9. Keller JN, Hanni KB, Markesbery WR. Impaired proteasome function in Alzheimer's disease. *J Neurochem.* 2000; 75: 436–439. PMID: 10854289
10. Jana NR, Zemskov EA, Wang G, Nukina N. Altered proteasomal function due to the expression of polyglutamine-expanded truncated N-terminal huntingtin induces apoptosis by caspase activation through mitochondrial cytochrome c release. *Hum Mol Genet.* 2001; 10: 1049–1059. PMID: 11331615
11. Cecarini V, Ding Q, Keller JN. Oxidative inactivation of the proteasome in Alzheimer's disease. *Free Radic Res.* 2007; 41: 673–680. PMID: 17516240
12. Pan T, Kondo S, Le W, Jankovic J. The role of autophagy-lysosome pathway in neurodegeneration associated with Parkinson's disease. *Brain.* 2008; 131: 1969–1978. <https://doi.org/10.1093/brain/awm318> PMID: 18187492
13. Di Domenico F, Coccia R, Cocciolo A, Murphy MP, Cenini G, Head E, et al. Impairment of proteostasis network in Down syndrome prior to the development of Alzheimer's disease neuropathology: redox proteomics analysis of human brain. *Biochim Biophys Acta.* 2013; 1832: 1249–1259. <https://doi.org/10.1016/j.bbadis.2013.04.013> PMID: 23603808
14. Keck S, Nitsch R, Grune T, Ullrich O. Proteasome inhibition by paired helical filament-tau in brains of patients with Alzheimer's disease. *J Neurochem.* 2003; 85: 115–122. PMID: 12641733
15. Myeku N, Cielland CL, Emrani S, Kukushkin NV, Yu WH, Goldberg AL, et al. Tau-driven 26S proteasome impairment and cognitive dysfunction can be prevented early in disease by activating cAMP-PKA signaling. *Nature Med.* 2016; 22: 46–53. <https://doi.org/10.1038/nm.4011> PMID: 26692334
16. Tseng BP, Green KN, Chan JL, Blurton-Jones M, LaFerla FM. A β inhibits the proteasome and enhances amyloid and tau accumulation. *Neurobiol Aging.* 2008; 29: 1607–1618. <https://doi.org/10.1016/j.neurobiolaging.2007.04.014> PMID: 17544172
17. Cecarini V, Bonfili L, Cuccioloni M, Mozzicafreddo M, Rossi G, Buizza L, et al. Crosstalk between the ubiquitin-proteasome system and autophagy in a human cellular model of Alzheimer's disease. *Biochim Biophys Acta.* 2012; 1822: 1741–1751. <https://doi.org/10.1016/j.bbadis.2012.07.015> PMID: 22867901
18. Butler D, Bahr BA. Oxidative stress and lysosomes: CNS-related consequences and implications for lysosomal enhancement strategies and induction of autophagy. *Antioxid Redox Signal.* 2006; 8: 185–196. PMID: 16487052
19. Korolchuk VI, Menzies FM, Rubinsztein DC. Mechanisms of cross-talk between the ubiquitin-proteasome and autophagy-lysosome systems. *FEBS Lett.* 2010; 584: 1393–1398. <https://doi.org/10.1016/j.febslet.2009.12.047> PMID: 20040365
20. Cohen-Kaplan V, Livneh I, Avni N, Cohen-Rosenzweig C, Ciechanover A. The ubiquitin-proteasome system and autophagy: Coordinated and independent activities. *Int J Biochem Cell Biol.* 2016; 79: 403–418. <https://doi.org/10.1016/j.biocel.2016.07.019> PMID: 27448843
21. Liebl MP, Hoppe T. It's all about talking: two-way communication between proteasomal and lysosomal degradation pathways via ubiquitin. *Am J Physiol Cell Physiol.* 2016; 311: 166–178.
22. Fortun J, Dunn WA Jr, Joy S, Li J, Notterpek L. Emerging role for autophagy in the removal of aggregates in Schwann cells. *J Neurosci.* 2003; 23: 10672–10680. PMID: 14627652
23. Iwata A, Riley BE, Johnston JA, Kopito RR. HDAC6 and microtubules are required for autophagic degradation of aggregated huntingtin. *J Biol Chem.* 2005; 280: 40282–40292. PMID: 16192271
24. Pandey UB, Nie Z, Batlevi Y, McCray BA, Ritson GP, Nedelsky NB, et al. HDAC6 rescues neurodegeneration and provides an essential link between autophagy and the UPS. *Nature.* 2007; 447: 859–863. PMID: 17568747

25. Zhu K, Dunner K, McConkey DJ. Proteasome inhibitors activate autophagy as a cytoprotective response in human prostate cancer cells. *Oncogene*. 2010; 29: 451–462. <https://doi.org/10.1038/nc.2009.343> PMID: 19881538
26. Ding Q, Dimayuga E, Martin S, Bruce-Keller AJ, Nukala V, Cuervo AM, et al. Characterization of chronic low-level proteasome inhibition on neural homeostasis. *J Neurochem*. 2003; 86: 489–497. PMID: 12871590
27. Cataldo AM, Hamilton DJ, Barnett JL, Paskevich PA, Nixon RA. Properties of the endosomal-lysosomal system in the human central nervous system: disturbances mark most neurons in populations at risk to degenerate in Alzheimer's disease. *J Neurosci*. 1996; 16: 186–199. PMID: 8613784
28. Park SY, Lee HR, Lee WS, Shin HK, Kim HY, Hong KW, et al. Cilostazol modulates autophagic degradation of β -amyloid peptide via SIRT1-coupled LKB1/AMPK α signaling in neuronal cells. *PLoS One*. 2016; 11: e0160620. <https://doi.org/10.1371/journal.pone.0160620> PMID: 27494711
29. Bendiske J, Bahr BA. Lysosomal activation is a compensatory response against protein accumulation and associated synaptopathogenesis—an approach for slowing Alzheimer disease? *J Neuropathol Exp Neurol*. 2003; 62: 451–463. PMID: 12769185
30. Wu JC, Qi L, Wang Y, Kegel KB, Yoder J, Difiglia M, et al. The regulation of N-terminal Huntingtin (Htt52) accumulation by Beclin 1. *Acta Pharmacol Sin*. 2012; 33: 743–751. <https://doi.org/10.1038/aps.2012.14> PMID: 22543707
31. Mueller-Steiner S, Zhou Y, Arai H, Roberson ED, Sun B, Chen J, et al. Anti-amyloidogenic and neuroprotective functions of cathepsin B: implications for Alzheimer's disease. *Neuron*. 2006; 51: 703–714. PMID: 16982417
32. Gavilán E, Pintado C, Gavilan MP, Daza P, Sanchez-Aguayo I, Castano A, et al. Age-related dysfunctions of the autophagy lysosomal pathway in hippocampal pyramidal neurons under proteasome stress. *Neurobiol Aging*. 2015; 36: 1953–1963. <https://doi.org/10.1016/j.neurobiolaging.2015.02.025> PMID: 25817083
33. Cecarini V, Bonfili L, Cuccioloni M, Mozzicafreddo M, Rossi G, Keller JN, et al. Wild type and mutant amyloid precursor proteins influence downstream effects of proteasome and autophagy inhibition. *Biochim Biophys Acta*. 2014; 1842: 127–134. <https://doi.org/10.1016/j.bbadis.2013.11.002> PMID: 24215712
34. Mackay EA, Ehrhard A, Moniatte M, Guenet C, Tardif C, Tarnus C, et al. A possible role for cathepsins D, E, and B in the processing of β -amyloid precursor protein in Alzheimer's disease. *Eur J Biochem*. 1997; 244: 414–425. PMID: 9119007
35. Butler D, Hwang J, Estick C, Nishiyama A, Kumar SS, Baveghems C, et al. Protective effects of positive lysosomal modulation in Alzheimer's disease transgenic mouse models. *PLoS One*. 2011; 6: e20501. <https://doi.org/10.1371/journal.pone.0020501> PMID: 21695208
36. Tiribuzi R, Crispoltoni L, Chiurchiu V, Casella A, Montecchiani C, Del Pino AM, et al. Trans-crocetin improves amyloid- β degradation in monocytes from Alzheimer's Disease patients. *J Neuro Sci*. 2017; 372: 408–412. <https://doi.org/10.1016/j.jns.2016.11.004> PMID: 27865556
37. Sun B, Zhou Y, Halabisky B, Lo I, Cho SH, Mueller-Steiner S, et al. Cystatin C-cathepsin B axis regulates amyloid β levels and associated neuronal deficits in an animal model of Alzheimer's disease. *Neuron*. 2008; 60: 247–257. <https://doi.org/10.1016/j.neuron.2008.10.001> PMID: 18957217
38. Yang DS, Stavrides P, Mohan PS, Kaushik S, Kumar A, Ohno M, et al. Reversal of autophagy dysfunction in the TgCRND8 mouse model of Alzheimer's disease ameliorates amyloid pathologies and memory deficits. *Brain*. 2011; 134: 258–277. <https://doi.org/10.1093/brain/awq341> PMID: 21186265
39. Viswanathan K, Hoover DJ, Hwang J, Wisniewski ML, Ikonne US, Bahr BA, et al. Nonpeptidic lysosomal modulators derived from Z-Phe-Ala-diazomethylketone for treating protein accumulation diseases. *ACS Med Chem Lett*. 2012; 3: 920–924. <https://doi.org/10.1021/ml300197h> PMID: 24900408
40. Wang C, Sun B, Zhou Y, Grubb A, Gan L. Cathepsin B degrades amyloid- β in mice expressing wild-type human amyloid precursor protein. *J Biol Chem*. 2012; 287: 39834–39841. <https://doi.org/10.1074/jbc.M112.371641> PMID: 23024364
41. Embury CM, Dyavarshetty B, Lu Y, Wiederin JL, Ciborowski P, Gendelman HE, et al. Cathepsin B improves β -amyloidosis and learning and memory in models of Alzheimer's Disease. *J Neuroimmune Pharmacol*. 2016; 12: 340–352. <https://doi.org/10.1007/s11481-016-9721-6> PMID: 27966067
42. Hook G, Hook V, Kindy M. The cysteine protease inhibitor, E64d, reduces brain amyloid- β and improves memory deficits in Alzheimer's disease animal models by inhibiting cathepsin B, but not BACE1, β -secretase activity. *J Alzheimers Dis*. 2011; 26: 387–408. <https://doi.org/10.3233/JAD-2011-110101> PMID: 21613740
43. Kindy MS, Yu J, Zhu H, El-Amouri SS, Hook V, Hook GR. Deletion of the cathepsin B gene improves memory deficits in a transgenic Alzheimer's disease mouse model expressing A β PP containing the

- wild-type β -secretase site sequence. *J Alzheimers Dis.* 2012; 29: 827–840. <https://doi.org/10.3233/JAD-2012-111604> PMID: 22337825
44. Mawuenyega KG, Sigurdson W, Ovod V, Munsell L, Kasten T, Morris JC, et al. Decreased clearance of CNS β -amyloid in Alzheimer's disease. *Science.* 2010; 330: 1774. <https://doi.org/10.1126/science.1197623> PMID: 21148344
 45. Bendiske J, Caba E, Brown QB, Bahr BA. Intracellular deposition, microtubule destabilization, and transport failure: an "early" pathogenic cascade leading to synaptic decline. *J Neuropathol Exp Neurol.* 2002; 61: 640–650. PMID: 12125743
 46. Morel E, Mehrpour M, Botti J, Dupont N, Hamaï A, Nascimbeni AC, et al. Autophagy: A Druggable Process. *Annu Rev Pharmacol Toxicol.* 2017; 57: 375–398. <https://doi.org/10.1146/annurev-pharmtox-010716-104936> PMID: 28061686
 47. Ryzhikov S, Bahr BA. Gephyrin alterations due to protein accumulation stress are reduced by the lysosomal modulator Z-Phe-Ala-diazomethylketone. *J Mol Neurosci.* 2008; 34: 131–139. <https://doi.org/10.1007/s12031-007-9009-7> PMID: 18204977
 48. Bahr BA, Wisniewski ML, Butler D. Positive lysosomal modulation as a unique strategy to treat age-related protein accumulation diseases. *Rejuvenation Res.* 2012; 15: 189–197. <https://doi.org/10.1089/rej.2011.1282> PMID: 22533430
 49. Bahr BA. Long-term hippocampal slices: a model system for investigating synaptic mechanisms and pathologic processes. *J Neurosci Res.* 1995; 42: 294–305. <https://doi.org/10.1002/jnr.490420303> PMID: 8583497
 50. Wisniewski ML, Hwang J, Bahr BA. Submicromolar A β ₄₂ reduces hippocampal glutamate receptors and presynaptic markers in an aggregation-dependent manner. *Biochim Biophys Acta.* 2011; 1812: 1664–1674. <https://doi.org/10.1016/j.bbadis.2011.09.011> PMID: 21978994
 51. Hegde AN. Proteolysis, synaptic plasticity and memory. *Neurobiol Learn Mem.* 2017; 138: 98–110. <https://doi.org/10.1016/j.nlm.2016.09.003> PMID: 27614141
 52. Butler D, Brown QB, Chin DJ, Batey L, Karim S, Mutneja MS, et al. Cellular responses to protein accumulation involve autophagy and lysosomal enzyme activation. *Rejuvenation Res.* 2005; 8: 227–237. <https://doi.org/10.1089/rej.2005.8.227> PMID: 16313222
 53. Jeon KH, Lee E, Jun KY, Eom JE, Kwak SY, Na Y, et al. Neuroprotective effect of synthetic chalcone derivatives as competitive dual inhibitors against μ -calpain and cathepsin B through the downregulation of tau phosphorylation and insoluble A β peptide formation. *Eur J Med Chem.* 2016; 121: 433–444. <https://doi.org/10.1016/j.ejmech.2016.06.008> PMID: 27318120
 54. Inubushi T, Kakegawa H, Kishino Y, Katunuma N. Specific assay method for the activities of cathepsin L-type cysteine proteinases. *J Biochem.* 1994; 116: 282–284. PMID: 7822244
 55. Coers J, Ranft C, Skoda RC. A truncated isoform of c-Mpl with an essential C-terminal peptide targets the full-length receptor for degradation. *J Biol Chem.* 2004; 279: 36397–36404. <https://doi.org/10.1074/jbc.M401386200> PMID: 15210714
 56. Fenteany G, Standaert RF, Lane WS, Choi S, Corey EJ, Schreiber SL. Inhibition of proteasome activities and subunit-specific amino-terminal threonine modification by lactacystin. *Science.* 1995; 268: 726–731. PMID: 7732382
 57. Goldberg AL. Protein degradation and protection against misfolded or damaged proteins. *Nature.* 2003; 426: 895–899. <https://doi.org/10.1038/nature02263> PMID: 14685250
 58. Bentea E, Van Liefveringe J, Verbruggen L, Martens K, Kobayashi S, Deneyer L, et al. Zonisamide attenuates lactacystin-induced parkinsonism in mice without affecting system xc-. *Exp Neurol.* 2017; 290: 15–28. <https://doi.org/10.1016/j.expneurol.2016.12.009> PMID: 28024798
 59. Bahr BA, Hoffman KB, Yang AJ, Hess US, Glabe CG, Lynch G. Amyloid β protein is internalized selectively by hippocampal field CA1 and causes neurons to accumulate amyloidogenic carboxyterminal fragments of the amyloid precursor protein. *J Comp Neurol.* 1998; 397: 139–147. PMID: 9671284
 60. Oddo S, Caccamo A, Tran L, Lambert MP, Glabe CG, Klein WL, et al. Temporal profile of amyloid- β (A β) oligomerization in an in vivo model of Alzheimer disease. A link between A β and tau pathology. *J Biol Chem.* 2006; 281: 1599–1604. <https://doi.org/10.1074/jbc.M507892200> PMID: 16282321
 61. LaFerla FM. Pathways linking A β and tau pathologies. *Biochem Soc Trans.* 2010; 38: 993–995. <https://doi.org/10.1042/BST0380993> PMID: 20658991
 62. Bahr BA, Bendiske J. The neuropathogenic contributions of lysosomal dysfunction. *J Neurochem* 2002; 83: 481–489. PMID: 12390510
 63. Sundelöf J, Sundström J, Hansson O, Eriksdotter-Jönhagen M, Giedraitis V, Larsson A, et al. Higher cathepsin B levels in plasma in Alzheimer's disease compared to healthy controls. *J Alzheimers Dis.* 2010; 22: 1223–1230. <https://doi.org/10.3233/JAD-2010-101023> PMID: 20930303

64. Sun Y, Rong X, Lu W, Peng Y, Li J, Xu S, et al. Translational study of Alzheimer's disease (AD) biomarkers from brain tissues in A β PP/PS1 mice and serum of AD patients. *J Alzheimers Dis.* 2015; 45: 269–282. <https://doi.org/10.3233/JAD-142805> PMID: 25502766
65. Bordi M, Berg MJ, Mohan PS, Peterhoff CM, Alldred MJ, Che S, et al. Autophagy flux in CA1 neurons of Alzheimer hippocampus: Increased induction overburdens failing lysosomes to propel neuritic dystrophy. *Autophagy.* 2016; 12: 2467–2483. <https://doi.org/10.1080/15548627.2016.1239003> PMID: 27813694
66. Moon HY, Becke A, Berron D, Becker B, Sah N, Benoni G, et al. Running-induced systemic cathepsin B secretion is associated with memory function. *Cell Metab.* 2016; 24: 332–340. <https://doi.org/10.1016/j.cmet.2016.05.025> PMID: 27345423
67. Intlekofer KA, Cotman CW. Exercise counteracts declining hippocampal function in aging and Alzheimer's disease. *Neurobiol Dis.* 2013; 57: 47–55. <https://doi.org/10.1016/j.nbd.2012.06.011> PMID: 22750524
68. Tsubokawa T, Solaroglu I, Yatsushige H, Cahill J, Yata K, Zhang JH. Cathepsin and calpain inhibitor E64d attenuates matrix metalloproteinase-9 activity after focal cerebral ischemia in rats. *Stroke.* 2006; 37: 1888–1894. <https://doi.org/10.1161/01.STR.0000227259.15506.24> PMID: 16763180
69. Hook GR, Yu J, Sipes N, Pierschbacher MD, Hook V, Kindy MS. The cysteine protease cathepsin B is a key drug target and cysteine protease inhibitors are potential therapeutics for traumatic brain injury. *J Neurotrauma.* 2014; 31: 515–529. <https://doi.org/10.1089/neu.2013.2944> PMID: 24083575
70. Menzies FM, Fleming A, Caricasole A, Bento CF, Andrews SP, Ashkenazi A, et al. Autophagy and neurodegeneration: pathogenic mechanisms and therapeutic opportunities. *Neuron.* 2017; 93: 1015–1034. <https://doi.org/10.1016/j.neuron.2017.01.022> PMID: 28279350