



Since January 2020 Elsevier has created a COVID-19 resource centre with free information in English and Mandarin on the novel coronavirus COVID-19. The COVID-19 resource centre is hosted on Elsevier Connect, the company's public news and information website.

Elsevier hereby grants permission to make all its COVID-19-related research that is available on the COVID-19 resource centre - including this research content - immediately available in PubMed Central and other publicly funded repositories, such as the WHO COVID database with rights for unrestricted research re-use and analyses in any form or by any means with acknowledgement of the original source. These permissions are granted for free by Elsevier for as long as the COVID-19 resource centre remains active.



Vacunas

www.elsevier.es/vac



Original article

Glycosylation, ligand binding sites and antigenic variations between membrane glycoprotein of COVID-19 and related coronaviruses



Ali A. Dawood

Dept. of Anatomy, College of Medicine, University of Mosul, Mosul, Iraq

ARTICLE INFO

Article history:

Received 26 August 2020

Accepted 9 September 2020

Keywords:

Glycoprotein

CTL epitope

Pangolin

Antigenicity

COVID-19

Ligand

Proteins

ABSTRACT

A new coronavirus strain has wreaked havoc on human lives so the WHO was declared as a pandemic since 20th March 2020. The Membrane glycoprotein MP spans the viral envelope and it has a highly conserved glycosylation sequence.

Aim: Our study goal was to find out the N-glycosylation, ligand binding sites, and antigenic variations between COVID-19 and other associated viruses.

Methods: We performed *In silico* methodologies for serial analysis at both an operational and result/output level is assessed and compared study factors.

Results: We detected high similarity in sequence alignment for >89% between COVID-19 MP and other MP of CoVs. Prediction of N-glycosylation and cytotoxic T-cell epitopes, we identified precisely sites between SARS-CoV-2 MP and Pangolin CoV MP 100%. We also didn't obtain any similarity in ligand binding site residues between MP sequences. Our study didn't reveal any similarity in CTL epitope predication between coronaviruses under study using the CTLPred server.

Conclusions: Our results exhibit that the membrane glycoprotein of SARS-CoV-2 is closely associated with predecessor SARS-CoVs specifically Pngolin CoV. Prediction of novel CTL epitopes may substantial scopes for the expansion of a peptide-based vaccine for the inhibition virion assembly of SARS-CoV-2.

© 2020 Elsevier España, S.L.U. All rights reserved.

Glicosilación, sitios de unión de ligandos y variaciones antigénicas entre la glicoproteína de membrana de la COVID-19 y los coronavirus asociados

RESUMEN

Una nueva cepa de coronavirus está causando estragos en la humanidad, por lo que la OMS declaró la situación de pandemia el 20 de marzo de 2020. La glicoproteína de membrana MP atraviesa la envoltura viral, y tiene una secuencia de glicosilación altamente conservada.

Palabras clave:

Glicoproteína

Epítipo CTL

Pangolín

E-mail address: aad@uomosul.edu.iq

<https://doi.org/10.1016/j.vacune.2021.01.001>

2445-1460/© 2020 Elsevier España, S.L.U. All rights reserved.

Antigenicidad
 COVID-19
 Ligando
 Proteínas

Objetivo: El objetivo de nuestro estudio fue averiguar la N-glicosilación, los sitios de unión y las variaciones antigénicas entre COVID-19 y el resto de virus asociados.

Métodos: Realizamos metodologías *in silico* para análisis de series, tanto a nivel operativo como de resultados, y valoramos y comparamos los factores de estudio.

Resultados: Detectamos una gran similitud en cuanto a la alineación de secuencia para > 89% entre la MP de COVID-19 y otras MP de CoV. Prediciendo la N-glicosilación y los epítomos de las células T citotóxicas identificamos con precisión del 100% los sitios entre MP de SARS-CoV-2 y MP de CoV de pangolín. No obtuvimos ninguna similitud en cuanto a los residuos del sitio de unión del ligando entre las secuencias de MP. Nuestro estudio no reveló ninguna similitud en la predicción del epítomo CTL entre los coronavirus estudiados, utilizando el servidor CTLPred.

Conclusiones: Nuestros resultados muestran que la glicoproteína de membrana de SARS-CoV-2 está estrechamente asociada a los SARS-CoV anteriores, específicamente CoV de pangolín. La predicción de los nuevos epítomos CTL puede definir sustancialmente la expansión de una vacuna basada en péptidos para la inhibición del ensamblaje del virión de SARS-CoV-2.

© 2020 Elsevier España, S.L.U. Todos los derechos reservados.

Introduction

Last December 2019, first reports emerged of a strange illness that was causing mortalities in the Chinese region of Wuhan. This disease is caused by a new strain of coronavirus that generally causes infections of the respiratory tract. As at last of April 2020, the disease had spread to almost every country across all continents of the world, with infections nearing 2,600,000 persons with mortalities hovering around 175,000 individuals. However, the transmission route of SARS-CoV-2 has not been recognized yet, the middling age of the recorded patients was between (55 and 65) years. The male registered >50% of the total. A novel coronavirus infection can stay asymptomatic and may cause mild to severe complications in many cases. Clinical researches have defined diverse symptoms of COVID-19 including fever, dry cough, breath shortness, sneezing, muscle pain as well as conjunctivitis, fatigue, and pneumonia. Some patients might be developed to intense illnesses such as pulmonary edema, acute respiratory distress, renal damage, and multiple failures quickly of organs.¹⁻³ Coronavirus genome ssRNA encodes four main structural proteins that formed the complete virus particles.⁴

Recently, all detected samples of SARS-CoV-2 have been to be closely allied to Bat-SARS of Betacoronavirus. The length of the encoded viral proteins was originated to be almost similar to Bat-SARS-CoV. A prominent variance was disclosed in the spike protein of SARS-CoV-2 when compared related to other SARS-CoVs.⁵

The infection is started through the interaction between the viral envelope and host cellular membrane.⁶ Moreover, the internalization of the virus treasured to the prospect glycosylation sites offered on the viral glycoproteins. The two main viral glycosylated proteins are spike (S) and membrane (M) while the non-glycosylated is the envelope protein (E). The M glycoprotein spans the viral envelope comprised of short N-terminal ectodomain, long C-terminal domain, and the three transmembrane domains.⁷ Membrane and envelope proteins are coveted for morphogenesis, assembly, and

budding of the virion. Glycans are fundamentally concerned with protein post-translational modification and folding to form the N-linkage glycosylation. The main conserved motif composed of Asparagine-X-Serine/Threonine (X: any amino acid except proline). The mannose core binds to the amide nitrogen of asparagine within a conserved motif. The GlcNAc sugar residue is linked via the hydroxyl side chain of Ser and Thr.⁸ This core of mannose is added in the form of 14 blocked parts in the endoplasmic reticulum and then moves to the Golgi bodies. Glycosylation plays in the fusion activity, antigenic features, and descent of the bioactive modulation on the binding receptors. The glycosylation also plays a substantial role in the status with the host by the effect of the ability of recombinant viruses to proliferate in the hepatic and brain cells.⁹⁻¹¹

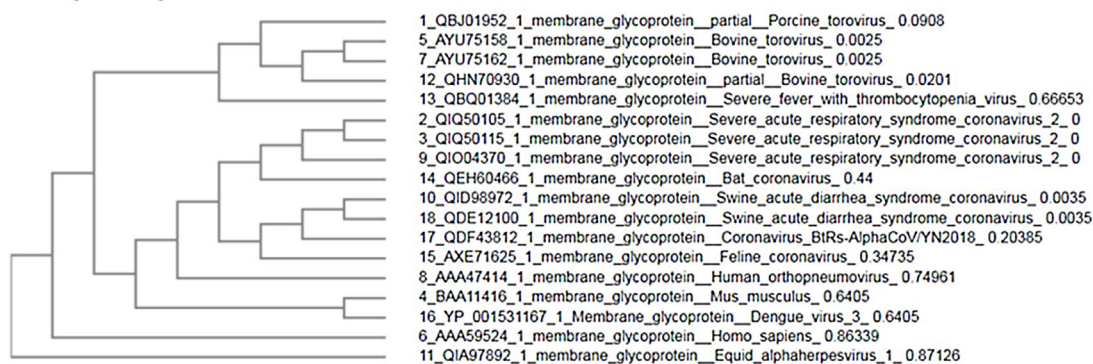
M protein acts to form a homogeneous complex. Proteins such as spike, nucleocapsid, and envelope can interact with this protein to form heterogeneous complexes. M protein alone cannot induce the formation of virions but it must be activated before the action of E protein before it can be assembled into virions. The all known membrane coronavirus proteins exhibit N and O-linkage glycosylation. The antigenicity of glycosylation is also important concerning the immune synapse formed between T-cell and antigen-presenting cells. Moreover, the glycosylation can potency adjust distinct responses of cellular immunity.¹¹ Our study investigated the topology of M proteins from coronaviridae and identification of the N-glycosylation sites compared between different sources using *in silico* analysis. We also found out the effect of antigenicity upon predicting the cytotoxic T cell epitopes in M protein.

Methods

For comparison between M glycoprotein of current circulating novel coronavirus with its predecessors and M glycoprotein from different sources, we have selected 18 amino acid sequences from NCBI (Table 1). For analyzing the divergence

Table 1 – Amino acid sequences of M glycoprotein of coronaviruses and from different other sources.

Accession no.	Protein type	Origin	Release date
QBJ01952.1	Membrane glycoprotein	Porcine torovirus	25-JUN-2019
QIQ50105.1	=	SARS-CoV-2	26-MAR-2020
QIQ50115.1	=	SARS-CoV-2	26-MAR-2020
BAA11416.1	=	Mus musculus	26-NOV-2003
AYU75158.1	=	Bovine torovirus	14-NOV-2018
AAA59524.1	=	Homo sapiens	7-JAN-1995
AYU75162.1	=	Bovine torovirus	14-NOV-2018
AAA47414.1	=	Human orthopneumovirus	3-AUG-1993
QIO04370.1	=	SARS-CoV-2	27-MAR-2020
QID98972.1	=	Swine acute diarrhea syndrome CoV	3-MAR-2020
QIA97892.1	=	Equid alphaherpesvirus 1	19-FEB-2020
QHN70930.1	=	Bovine torovirus	28-JAN-2020
QBQ01384.1	=	Severe fever with thrombocytopenia virus	18-DEC-2019
QEH60466.1	=	Bat CoV	1-SEP-2019
AXE71625.1	=	Feline CoV	20-AUG-2019
YP_001531167.1	=	Dengue virus 3	11-JUL-2019
QDF43812.1	=	Coronavirus BtRs-Alpha CoV/YN	30-JUN-2019
QDE12100.1	=	Swine acute diarrhea syndrome coronavirus	26-JUN-2019

**Fig. 1 – Phylogenetic tree of 18 MP sequences.**

upon the M glycoprotein sequences, we aligned the collinear complete sequence of MP using CLUSTALW. The phylogenetic tree was generated using CLUSTAL-OMEGA in EMBLE-EBI software and confirmed using the MAFFT version 7 method which is a simple agglomerative hierarchical clustering method (Fig. 1).

Further selection, we have chosen four closest amino acid sequences in similarity related to coronaviruses for more analysis. MP of SARS-CoV-2 (QHD43419.1), Pangolin CoV (QIQ54051.1), Bat SARS-like CoV (ATO98112.1) and Human SARS-CoV (A7J8L8). We aligned the complete sequences of MP using ViPR (MSA). This data was supported for further testing using T-COFFEE pairwise sequence alignment server. Gaps and mismatches have identified as (-) while the tiny positive scores were detected as (colors other than blue residues), and high scores were identified as blue residues (Fig. 2). The phylogenetic tree was extracted to observe the related sequences (Fig. 3).

Diversity in glycosylation patterns

The glycosylation sites of SARS-CoV-2 MP and related viruses were determined by NetNGlyc 2.0 software to find out

differences in the viral attachment sites on the host cell surface (<https://www.cbs.dtu.dk/services/NetNGlyc/>).¹²

Antigenic variation

The antigenic variation SARS-CoVs Mp was specified using the NetCTL 1.2 server¹³ to predict the MHC class I binding peptide, C-terminal cleavage, and transport efficiency of the TAP protein. Cytotoxic T lymphocyte (CTL) epitopes of the MPs detected separately. Then, the results were compared with a score >0.7. The CTL epitopes were approved by the CTLpred server.

Structural divergence and identified of ligand binding sites

The protein homology modeling of SARS-CoVs MP sequences was applied using the I-TASSER server to determine the structural divergence between sequences (<https://zhanglab.ccmb.med.umich.edu>). The generated models of SARS-CoV-2 MP and the other three SARS-CoVs were based on the cryo-EM structure of the SARS-CoVs MP. Based on the local and global RMSD values, the deviation between the structural sequence variations was estimated.¹⁴ To detect ligand binding sites for sequences under study, we used I-TASSER and COACH servers.

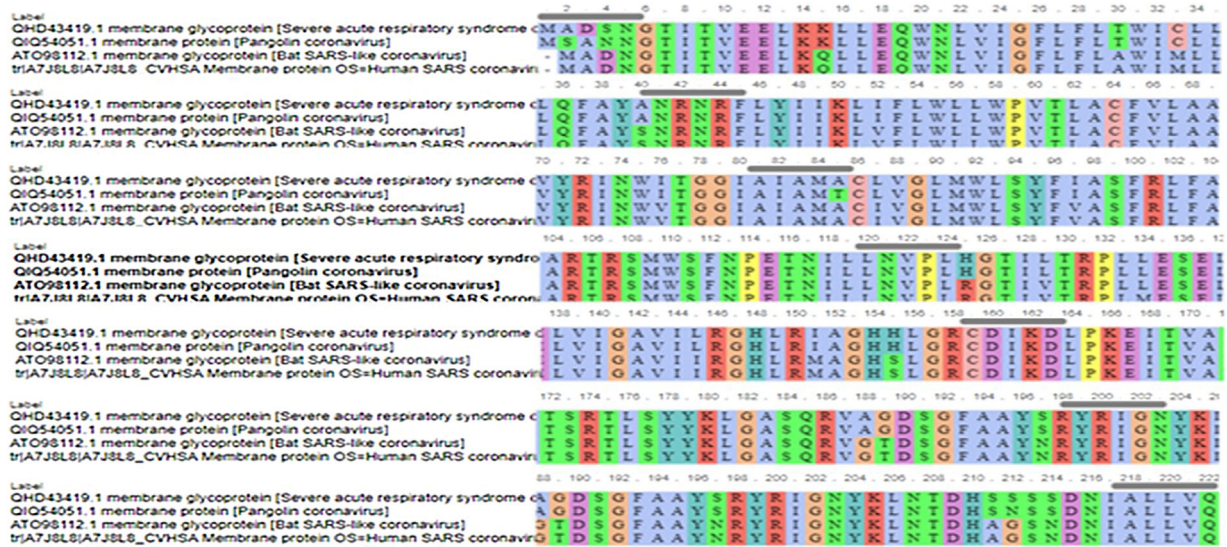


Fig. 2 – Multiple sequence alignment of 4 MP SARS-CoVs.

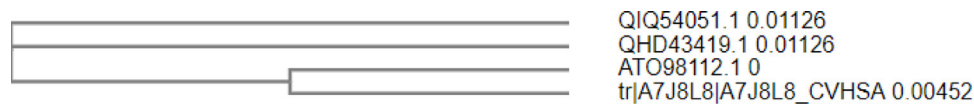


Fig. 3 – Phylogenetic tree of the closest MP SARS-CoVs sequences.

Results

Prediction of the phylogenetic tree and sequence alignment

The phylogenetic tree analysis shows that three sequences of SARS-CoV-2 MP with score identity 100% are closely related with Bat SARS-CoV with score 65% and score (30–40%) with other SARS-CoVs while it was < 20% similarity of MP other sources (Fig. 1). Next multiple sequence alignment and phylogenetic tree-related only SARS-CoVs, the high similarity scores between SARS-CoV-2 MP with Pangolin CoV, Bat SARS-CoV, and Human CoV were 97.75%, 90.5%, and 89.69% respectively (Figs. 2 and 3). This data suggests that MP of SARS-CoV-2 exhibits higher sequence similarity with SARS-CoVs. The sequence variations are desired for interaction with cellular receptors of the minimal binding domains between the amino acids (19–32) and (37–72). The current study set that MP Exhibits 97% identity.

The distinction of N-glycosylation manner for M protein

The prospect N-linkage residues upon MP under inspection were contrasted and viewed in Table 2. As an emulate with the SARS-CoVs, we have set that MP of SARS-CoV-2 exhibits novel N-glycosylation sites: NGTI, NLVI, NRNR, NRFL, NILL, NVPL, NYKL, and NIAL, that might be the sequence variation results. Besides, we also found that the SARS-CoV-2 MP exhibits mutual N-glycosylation sites offered in SARS-CoVs in gray highlights (Italics text) such as NLVI, NRNR, NRFL, NILL, NVPL, and NYKL (Table 2). Our glycosylation data suggests that the SARS-CoV-2 might interact with host receptors using

linkage residues that could affect the internalization mode and related pathogenesis.

The antigenic distinction in the M proteins

The antigenic diversity of novel and SARS-CoVs MP were matched to define the antigenicity. Our study revealed that most of the CTL epitopes were newly for the SARS-CoV. However, seven epitopes LLEQWNLVI, WICLLQFAY, YANRRNFLY, LVGLMWLSY, VATSRTLSY, ATSRTLSYY, and AGDSGFAAY were found to be identical in the four MP sequences understudy in gray highlight (Italics text) (Table 3). Also, some of the epitopes were set with alternation in single amino acids. The antigenicity data proposed that the SARS-CoV-2 displays altitude antigenic resemblance with related coronavirus and therefore can be theorized as one of the preventive strategies based on a vaccine designed. Furthermore, the predication epitopes may be used to layout effective vaccines. On the contrary, our study recorded that there was no similarity detected in prediction CTL epitopes between SARS-CoV-2 MP and related SARS-CoVs under study using CTLPred tools (Table 3).

Structural divergence in M protein

The predicted models were compared for the sequence divergence of MPs. We have found that SARS-CoV-2 MP shows 1.96 angstroms in local RMSD value which scored coverage alignment TM 0.90 with the structure 6qgiA1 in PDB and 0.01 high identity. The ligand-binding site 2y03B in PDB is 2CV (HEGA-10) on the residues (L27, W92, and Y95). The TM-alignment is equal to 0.987 (fig. 4A, Table 4). Furthermore, the 3d

Table 2 – Comparison of N-glycosylation sites between MP of SARS-CoV-2 and 3 sequences of MP SARS-CoVs strains.

N-Glycosylation									
SARS-CoV-2 MP					Pangolin CoV MP				
Position	Sites	Potential	Jury agreement	N-Glyc result	Position	Sites	Potential	Jury agreement	N-Glyc result
–	–	–	–	–	4	NNGT	0.5738	(5/9)	+
5	NGTI	0.7577	(9/9)	+++	5	NGTI	0.8124	(9/9)	+++
21	NLVI	0.7299	(9/9)	++	21	NLVI	0.7231	(9/9)	++
41	NRNR	0.6584	(8/9)	+	41	NRNR	0.6584	(8/9)	+
43	NRFL	0.7594	(9/9)	+++	43	NRFL	0.7596	(9/9)	+++
117	NILL	0.7269	(9/9)	++	117	NILL	0.7270	(9/9)	++
121	NVPL	0.7986	(9/9)	+++	121	NVPL	0.7984	(9/9)	+++
203	NYKL	0.7441	(9/9)	++	203	NYKL	0.7437	(9/9)	++
216	NIAL	0.5233	(6/9)	+	–	–	–	–	–
N-Glycosylation									
Bat SARS-CoV MP					Human SARS-CoV MP				
Position	Sites	Potential	Jury agreement	N-Glyc result	Position	Sites	Potential	Jury agreement	N-Glyc result
4	NGTI	0.8430	(9/9)	+++	4	NGTI	0.8430	(9/9)	+++
20	NLVI	0.7217	(9/9)	++	20	NLVI	0.7217	(9/9)	++
40	NRNR	0.6771	(8/9)	+	40	NRNR	0.6772	(8/9)	+
42	NRFL	0.7886	(9/9)	+++	42	NRFL	0.7887	(9/9)	+++
116	NILL	0.7213	(9/9)	++	116	NILL	0.7213	(9/9)	++
120	NVPL	0.7890	(9/9)	+++	120	NVPL	0.7890	(9/9)	+++
202	NYKL	0.7222	(9/9)	++	202	NYKL	0.7222	(9/9)	++
215	NIAL	0.6177	(8/9)	+	215	NIAL	0.6176	(8/9)	+
196	NRYS	0.7158	(8/9)	+	196	NRYS	0.7158	(8/9)	+

The table shows a comparison of predicted N-glycosylation residues between MP of SARS-CoVs strains. N-glycosylation potential (0.5) was taken as cutoff. The N-glycosylation sites were determined by NetNGlyc 1.0. *Italics indicates the high similarities between N-glycosylation sites between the MP strains. The jury agreement column indicates how many of the nine networks support the prediction.

Table 3 – Comparison of antigenicity sites between MP of SARS-CoV-2 and 3 sequences of MP SARS-CoVs strains.

Antigenicity SARS-CoV-2			Pangolin CoV MP			Bat SARS-CoV MP			Human SARS-CoV MP		
Peptides (NetCTL)	CTLPred	Position	Peptides (NetCTL)	CTLPred	Position	Peptides (NetCTL)	CTLPred	Position	Peptides (NetCTL)	CTLPred	Position
–	–	–	–	–	–	MADNGTITV	–	1	MADNGTITV	–	1
LLEQWNLVI	–	16	LLEQWNLVI	–	16	LLEQWNLVI	–	15	LLEQWNLVI	–	15
WICLLQFAY	–	31	WICLLQFAY	–	31	WIMLLQFAY	–	30	WIMLLQFAY	–	30
YANRRNFLY	–	39	YANRRNFLY	–	39	YSNRRNFLY	–	38	YSNRRNFLY	–	38
LVGLMWLSY	–	87	LVGLMWLSY	–	87	IVGLMWLS	–	86	IVGLMWLSY	–	86
VATSRTLSTY	–	170	VATSRTLSTY	–	170	VATSRTLSTY	–	169	VATSRTLSTY	–	169
ATSRTLSTYY	–	171	ATSRTLSTYY	–	171	ATSRTLSTYY	–	170	ATSRTLSTYY	–	170
AGDSGFAAY	–	188	AGDSGFAAY	–	188	GTDSGFAAY	–	187	GTDSGFAAY	–	187
YSRYRIGNY	–	196	YSRYRIGNY	–	196	–	–	–	–	–	–
SSSDNIALL	–	212	NSSDNIALL	–	212	SNDNIALLV	–	212	SNDNIALLV	–	212
SSDNIALLV	–	213	SSDNIALLV	–	213	–	–	–	–	–	–
–	–	–	MTCLVGLMW	–	84	–	–	–	–	–	–
–	IGFLFTWI	79	–	NWITGGIAI	105	–	VIRSMADNG	34	–	PESVMADNG	45
–	FIASFRLFA	151	–	MTCLVGLMW	115	–	IGAVIIRGH	176	–	MLLQFAYSN	80
–	NVPLHGTL	176	–	SRTLSTYYKL	204	–	KDLPKEITV	198	–	GGIAIAMAC	125

The table shows a comparison of predicted CTL epitopes in MP of SARS-CoV-2 and 3 SARS-CoVs strains. Epitopes were generated by NetCTL 1.0 and confirmed by CTLPred tool where scores > 1 shows highest sensitivity and specificity toward MHC class I. *Italics* indicates the identical CTL epitopes between 4 strains. There was no similarity of CTL epitope prediction between strains using CTLPred server.

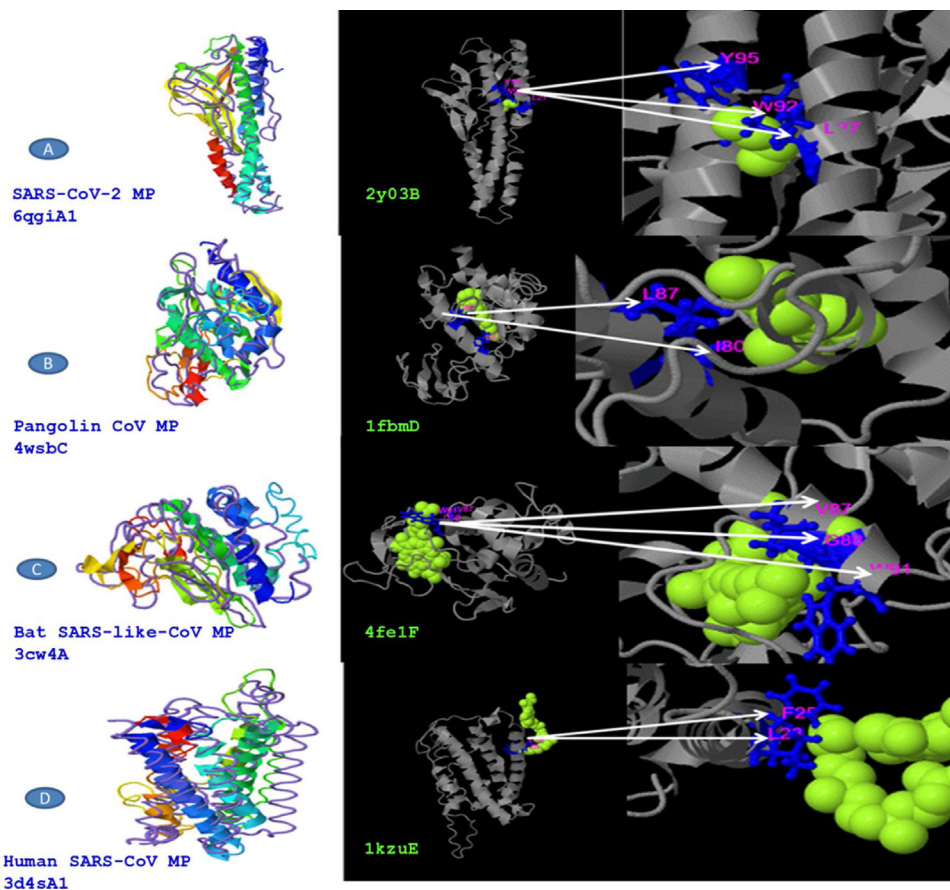


Fig. 4 – Structural divergence in M glycoprotein of four strains in PDB and the ligand binding sites residues in PBD, A: MP of SARS-CoV-2, B: MP of Pangolin CoV, C: MP of Bat SARS-like-CoV, D: MP of Human SARS-CoV.

Table 4 – Structural CoVs MP strains close to the target in the PDB and ligand binding sites were predicted in the PBD.

M Protein source	Identical structural analogs in PDB	TM-score	RMSD	Highest match	Coverage	Identical ligand in PDB	Ligand name	Ligand binding sites residues
SARS-CoV-2	6qgiA1	0.909	1.96	0.100	0.987	2y03B	2CV	L27, W92, Y95
Pangolin CoV	4wsbC	0.755	2.35	0.095	0.851	1fbmD	RTL	I80, L87
Bat SARS-like-CoV	3cw4A	0.736	2.56	0.084	0.860	4fe1F	CLA	V87, G88, W91
Human SARS-CoV	3d4sA1	0.656	3.97	0.051	0.878	1kzuE	BCL	F25, L28

I-TASSER uses the TM-align structural alignment in the PDB library. RMSD is the structurally aligned by TM-align. Highest match is the percentage sequence identity in the structurally aligned region. Coverage is equal to the number of structurally aligned residues. COFACTOR infers protein structure comparison. Ligand name is name of possible binding ligand.

structure was identified for MP of Pangolin CoV according to the 4wsbC in PDB. The local RMSD value was recorded at 2.35. The TM-align scored 0.755 with the identity 0.095. The ligand-binding site 1fbmD in PDB is RTL (Retinol) on the residues (I80 and L87). The encasement of the alignment is equal to 0.851 (Fig. 4B, Table 4). The 3d structure was identified for MP of Bat SARS-like-CoV according to the 3cw4A in PDB. The local RMSD value was recorded at 2.56. The TM-align scored 0.736 with the identity 0.084. The ligand-binding site 4fe1F in PDB is CLA (Chlorophylla) on the residues (V87, G88, and W91). The total alignment is equal to 0.86 (Fig. 4C, Table 4). In addition to that, the 3d structure was identified for MP of Human CoV according to the 3d4sA1 in PDB. The local RMSD value was recorded

at 3.97. The TM-align scored 0.656 with the identity 0.051. The ligand-binding site 1kzuE in PDB is BCL (Bacteriochlorophylla) on the residues (F25 and L28). The TM-alignment is equal to 0.878 (Fig. 4D, Table 4). Although it has been suggested that the ligand-binding sites are important for vaccine designing, we didn't obtain any similarity in ligand binding site residues between four MP sequences.

Discussion

The SARS-CoV-2 outbreaks in China have elevated alarm because of its correlated global risk. The administration of

SARS-CoV-2 infections depends on the features of the virus including the seriousness of the produced infection, the transmission receptivity, and the availability of vaccines and suitable drugs to control the disease. Most members of coronaviruses are zoonotic which means they can transmit from animals to humans.^{15,16} The precise origin of SARS-CoV-2 has not been yet identified. The evaluation of SARS-CoV-2 might be arranged into several options including virus virulence, observed new symptoms, conformational changes in the virion, emerging of mutations as well as the assessment of recovery cases after a while.^{17,18}

In this study, we have listed that sequence alignment of amino acids has a considerable variance of less than 20% between membrane protein of coronaviruses and others in different sources. We also detected high similarity for more than 89% between SARS-CoV-2 MP and other MP of CoVs. For instance, a previous study supplied empirical support for the topology of SARS-CoV-2 MP with the N-terminus, long cytosolic C-terminus, and three transmembrane segments.¹⁹

We have established novel N-glycosylation residues in the SARS-CoV-2 MP suggesting that viruses may harness different linkages to interact with its receptors. Whilst comparing the N-glycosylation sites, we identified precisely sites between SARS-CoV-2 MP and Pangolin CoV MP 100%. The same similarity was detected between Bat SARS-like-CoV MP and Human CoV MP in all sites with the same score of Jury agreement. From these results, we detected a mutation with the addition of one amino acid, which presented in the reading frame progress with a single codon from the position 20 in Bat SARS-like-CoV to position 21 in SARS-CoV-2 (Table 2). Several shreds of evidence indicated that N and O-glycosylation of the viral envelope proteins are molecular determinants for viral replication and infectivity. Our study agreed with a previous study mentioned that the unique N- and O-linked glycosylation residues of S protein.²⁰⁻²³

Our data showed the sequence similarity, and divergence in the N-glycosylation sites of SARS-CoV-2, MP compared with the SARS-CoVs strain.^{24,25} We also suggest the range of attachment inhibitors of coronavirus as a treatment option in the current outbreak. Our data may provide a former scale in the structural genomics and labor toward the perception of the development and the mission of the COVID-19.

Our data registered SARS-CoV-2 MP presents unique CTL epitopes that might result in distinct antigenic response related to other SARS-CoVs under study which showed in highlight gray colors: LLEQWNLVI, WICLLQFAY, YANRNRFLY, LVGLMWLSY, VATSRTLSTY, ATSRTLSTYY, and AGDSGFAAY, although displacement of reading frame one codon in position 15 in Bat SARS-like-CoV MP to position 16 in SARS-CoV-2. Moreover, We revealed that the epitope prediction of SARS-CoV-2 MP is accurately similar to Pangolin CoV MP in highlight gray and pink (Table 3). It has been suggested that CTL epitopes may realize opportunities for the expansion of the vaccine to prevent SARS-CoV-2. However, some epitopes are similar in all glycoproteins.^{26,27} On the contrary, we didn't find any similarity in CTL epitope predication between coronaviruses under study using the CTLPred tool (Table 3). It has been suggested that improved detection of CTL and B-cell epitopes may be useful in reverse immunogenetic approaches.²⁸

COACH is a branch in I-TASSER server that joins multiple function surveillance resulted in binding residues. All possible binding ligands and detailed predictions are related to each sequence in PDB. Predication of ligand binding sites might be beneficial for researchers in their decoding of the molecular mechanisms binding in infectivity in addition to the development of antiviral drug or vaccine discovery. From our data, we provided a comparative analysis between the perspective of ligand-binding MP of SARS-CoV-2 and its closest relatives. Unfortunately, we didn't demeanor any similarity of ligand binding site residues between strains of SARS CoVs. Our previous study conducted that ligand binding sites residues of SARS-CoV-2 spike protein are highly conserved with other S protein relates in SARS CoVs.²⁹

Conclusions

For the first time, our results demonstrated the emergence of SARS-CoV-2 membrane glycoprotein closely associated with predecessor SARS-CoVs specifically Pangolin CoV. Foremost our data supplies evidence that SARS-CoV-2 MP uses various novel N-glycosylation sites contiguous to SARS-CoVs. Further, the prediction of novel CTL epitopes might sort out chances for the evolution of a predict suitable vaccine to prevent virion assembly of SARS-CoV-2. Furthermore, our disclosure of identical antigenic sites in SARS-CoV-2, Pangolin CoV, Human-CoV, and Bat-SARS-like CoV may suggest the use of specific attachment inhibitors of coronavirus as the actual option of COVID-19 treatment.

Trial registration number (if clinical trial)

None.

Funding

Self-support.

Conflicts of interest

No conflict of interest.

Acknowledgments

The author is very grateful to the college of Medicine, the University of Mosul for improving the quality of this work.

REFERENCES

1. Fehr AR, Perlman S. Coronaviruses: an overview of their replication and pathogenesis. *Methods Mol Biol.* 2015;1282:1-23.
2. Wu F, Zhao S, Yu B, Chen Y M, Wang W, Hu Y, et al. A novel Coronavirus associated with respiratory disease in Wuhan of Hubei province, China. https://www.ncbi.nlm.nih.gov/nucleotide/NC_045512.2 [accessed 23.01.20].

3. Banerjee A, Kulcsar K, Misra V, Frieman M, Mossman K. Bats, and coronaviruses. *Viruses*. 2019;11:41.
4. Dawood A. Mutated COVID-19, may foretells mankind in a great risk in the future. *N Mic N Inf*. 2020;35, <http://dx.doi.org/10.1016/j.nmni.2020.100673>.
5. Srinivasan S, Cui H, Gao Z, Liu M, Lu S, Mkwandawire W, et al. Structural genomics of SARS-CoV-2 indicates evolutionary conserved functional regions of viral proteins. *Viruses*. 2020;12:360, <http://dx.doi.org/10.3390/v12040360>.
6. Huang C, Wang Y, Li X, Ren L, Zhao J, Hu Y, et al. Clinical features of patients infected with 2019 novel coronavirus in Wuhan, China. *Lancet*. 2020, [http://dx.doi.org/10.1016/S0140-6736\(20\)30183-5](http://dx.doi.org/10.1016/S0140-6736(20)30183-5).
7. Lip KM, Shen S, Yang X, Keng C, Zhang A, Janice H, et al. Monoclonal antibodies targeting the HR2 Domain and the region immediately upstream of the HR2 of the S Protein neutralize in vitro infection of severe acute respiratory syndrome coronavirus. *J Virol*. 2006;80:941–50.
8. Bektasa M, Rubenstein DS. The role of intracellular protein O-glycosylation in cell adhesion and disease. *J BioMed Res*. 2011;25:227–36.
9. Zheng J, Yamada Y, Funga TS, Huang M, Chiac R, Liu DX. Identification of N-linked glycosylation sites in the spike protein and their functional impact on the replication and infectivity of coronavirus infectious bronchitis virus in cell culture. *Viol*. 2018;513:65–74, <http://dx.doi.org/10.1016/j.viol.2017.10.003>.
10. Song HD, Tu CC, Zhang GW, Wang SY, Zheng K, Lei LC, et al. Cross-host evolution of severe acute respiratory syndrome coronavirus in palm civet and human. *Proc Natl Acad Sci USA*. 2005;102:2430–5.
11. Sriram V, Willard CA, Liu J, Brutkiewicz RR. Importance of N-linked glycosylation in the functional expression of murine CD 1 d 1. *Immunology*. 2007;123:272–81, <http://dx.doi.org/10.1111/j.1365-2567.2007.02696.x>.
12. Gupta R, Jung E, Brunak S. Prediction of N-glycosylation sites in human proteins; 2004. <https://www.cbs.dtu.dk/services/NetNGlyc/>
13. Larsen MV, Lundegaard C, Lamberth K, Buus S, Lund O, Nielsen M. Large-scale validation of methods for cytotoxic T-lymphocyte epitope prediction. *BMC Bioinformatics*. 2007;8:424.
14. Maiti R, Van Domselaar GH, Zhang H, Wishart DS. SuperPose: a simple server for sophisticated structural superposition. *Nucleic Acids Res*. 2004;32(Web Server issue):W590–4.
15. Banerjee A, Kulcsar K, Misra V, Frieman M, Mossman K. Bats, and coronaviruses. *Viruses*. 2019;11:41.
16. Hu B, Zeng LP, Yang XL, Ge XY, Zhang W, Li B, et al. Discovery of a rich gene pool of bat SARS-related Coronaviruses provides new insights into the origin of SARS Coronavirus. *PLoS Pathog*. 2017;13, e1006698.
17. Wang D, Hu B, Hu C, Zhu F, Liu X, Zhang J, et al. Clinical characteristics of 138 hospitalized patients with 2019 novel coronavirus-infected pneumonia in Wuhan, China. *JAMA*. 2020, <http://dx.doi.org/10.1001/jama.2020.1585>.
18. Hoffmann M, Kleine-Weber H, Schroeder S, Muller MA, Drosten C, Pohlmann S. SARS-CoV-2 cell entry depends on ACE2 and TMPRSS2 and is blocked by a clinically proven protease inhibitor. *Cell*. 2020;181:271–80, <http://dx.doi.org/10.1016/j.cell.2020.02.052>.
19. Voß D, Pfefferle S, Drosten C, Stevermann L, Traggiai E, Lanzavecchia A, et al. Studies on membrane topology, N-glycosylation, and functionality of SARS-CoV membrane protein. *Viol J*. 2009;6:79 <http://www.virologyj.com/content/6/1/79>
20. Parsons LM, Bouwman KM, Azurmendi H, de Vries RP, Cipollo JF, Verheije MH. Glycosylation of the viral attachment protein of avian Coronavirus is essential for host cell and receptor binding. *J Biol Chem*. 2019;294:7797–809.
21. Choy WY, Lin SG, Chan PK, Tam JS, Lo YM, Chu IM, et al. Synthetic peptide studies on the severe acute respiratory syndrome (SARS) coronavirus spike glycoprotein: a perspective for SARS vaccine development. *Clin Chem*. 2004;50:1036–42.
22. Fukushi S, Mizutani T, Sakai K, Saijo M, Taguchi F, Yokoyama M, et al. Amino acid substitutions in the S2 region enhance severe acute respiratory syndrome coronavirus infectivity in rat angiotensin-converting enzyme 2-expressing cells. *J Virol*. 2007;81:10831–4, <http://dx.doi.org/10.1128/JVI.01143-07>.
23. Vankadari N, Wilce JA. Emerging COVID-19 coronavirus: glycan shield and structure prediction of spike glycoprotein and its interaction with human CD26. *Emr Mic Inf*. 2020;9, <http://dx.doi.org/10.1080/22221751.2020.1739565>.
24. Oostra M, de Haan CAM, de Groot RJ, Rottier PJM. glycosylation of the severe acute respiratory syndrome coronavirus triple-spanning membrane proteins 3a and M. *J Virol*. 2006;80:2326–36, <http://dx.doi.org/10.1128/JVI.80.5.2326-2336>.
25. Charley B, Lavina L, Delmas B. Glycosylation are required for coronavirus TGEV to induce an efficient production of IFN alpha by blood mononuclear cells. *Scand J Immunol*. 1991;33:435–40.
26. Baruah V, Bose S. Immunoinformatics-aided identification of T cell and B cell epitopes in the surface glycoprotein of 2019-nCoV. *J Med Virol*. 2020;92:495–500, <http://dx.doi.org/10.1002/jmv.25698>.
27. Larsen MV, Lundegaard C, Lamberth K, Buus S, Brunak S, Lund O, et al. An integrative approach to CTL epitope prediction: a combined algorithm integrating MHC class I binding, TAP transport efficiency, and proteasomal cleavage predictions. *Eur J Immunol*. 2005;35:2295–303, <http://dx.doi.org/10.1002/eji.200425811>.
28. Dawood A. Identification of CTL and B-cell epitopes in the Nucleocapsid Phosphoprotein of COVID-19 using Immunoinformatics.
29. Dawood A. Compatibility of the Ligand Binding Sites in the Spike Glycoprotein of COVID-19 with those in the Aminopeptidase and the Caveolins 1, 2 Proteins.