

RESEARCH

Open Access

Co-enrollment of critically ill patients into multiple studies: patterns, predictors and consequences

Deborah Cook^{1,2*}, Ellen McDonald², Orla Smith³, Nicole Zytaruk², Diane Heels-Ansdell², Irene Watpool⁴, Tracy McArdle⁴, Andrea Matte³, France Clarke², Shirley Vallance⁵, Simon Finfer⁶, Pauline Galt⁷, Tim Crozier⁷, Rob Fowler³, Yaseen Arabi⁸, Clive Woolfe⁹, Neil Orford¹⁰, Richard Hall¹¹, Neill KJ Adhikari³, Marie-Claude Ferland¹², John Marshall³ and Maureen Meade^{1,2} and for The PROTECT Research Coordinators and for PROTECT Investigators, for Canadian Critical Care Trials Group and the Australian and New Zealand Intensive Care Society Clinical Trials Group

Abstract

Introduction: Research on co-enrollment practices and their impact are limited in the ICU setting. The objectives of this study were: 1) to describe patterns and predictors of co-enrollment of patients in a thromboprophylaxis trial, and 2) to examine the consequences of co-enrollment on clinical and trial outcomes.

Methods: In an observational analysis of an international thromboprophylaxis trial in 67 ICUs, we examined the co-enrollment of critically ill medical-surgical patients into more than one study, and examined the clinical and trial outcomes among co-enrolled and non-co-enrolled patients.

Results: Among 3,746 patients enrolled in PROTECT (Prophylaxis for ThromboEmbolism in Critical Care Trial), 713 (19.0%) were co-enrolled in at least one other study (53.6% in a randomized trial, 37.0% in an observational study and 9.4% in both). Six factors independently associated with co-enrollment (all $P < 0.001$) were illness severity (odds ratio (OR) 1.35, 95% confidence interval (CI) 1.19 to 1.53 for each 10-point Acute Physiology and Chronic Health Evaluation (APACHE) II score increase), substitute decision-makers providing consent, rather than patients (OR 3.31, 2.03 to 5.41), experience of persons inviting consent (OR 2.67, 1.74 to 4.11 for persons with > 10 years' experience compared to persons with none), center size (all ORs > 10 for ICUs with > 15 beds), affiliation with trials groups (OR 5.59, 3.49 to 8.95), and main trial rather than pilot phase (all ORs > 8 for recruitment year beyond the pilot). Co-enrollment did not influence clinical or trial outcomes or risk of adverse events.

Conclusions: Co-enrollment was strongly associated with features of the patients, research personnel, setting and study. Co-enrollment had no impact on trial results, and appeared safe, acceptable and feasible. Transparent reporting, scholarly discourse, ethical analysis and further research are needed on the complex topic of co-enrollment during critical illness.

Introduction

Clinical trials are essential to improve care and reduce morbidity and mortality in the intensive care unit (ICU). Some critically ill patients are eligible for more than one

study. Restricting enrollment to only one study when patients are eligible for more than one is a potentially modifiable barrier to recruitment [1]. Testing two interventions concurrently can be achieved with a factorial design as used successfully by the Acute Respiratory Distress Syndrome Network. In other circumstances, when trials are initiated by different investigators at different times, with different inclusion and exclusion criteria,

* Correspondence: debcook@mcmaster.ca

¹Department of Medicine, McMaster University Health Sciences Center, Hamilton, ON L8N 3Z5, Canada

Full list of author information is available at the end of the article

co-enrollment can facilitate either sequential or simultaneous recruitment (Figure 1).

Co-enrollment in multiple trials, often driven by patient demand, occurs in persons with human immunodeficiency virus (HIV) [2], and was documented among 23% of persons with HIV in six ongoing studies [3]. In this population, co-enrollment is actively encouraged by some research programs [3] but not others [2]. In pre-hospital resuscitation trials, co-enrollment occurs either in series or in parallel [4]. Half of the members of two critical care research consortia reported co-enrollment of a patient in more than one study in the last year [5]. In a parental survey, 74% endorsed enrollment of their premature babies in 2 or more studies, 50% would consent to 3 or more studies, and 10% were willing to join more than 10 studies [6].

Some Institutional Review Boards restrict the practice of co-enrollment, while concerned about patient safety, decisional burden or scientific integrity. Given the dearth of evidence on these issues, trialists have called for consideration of co-enrollment on a case-by-case basis, and reporting on its impact [7]. The primary objective of this study was to document the patterns and predictors of patient co-enrollment in an international heparin thromboprophylaxis trial. The secondary objective was to examine the consequences of co-enrollment on clinical and trial outcomes.

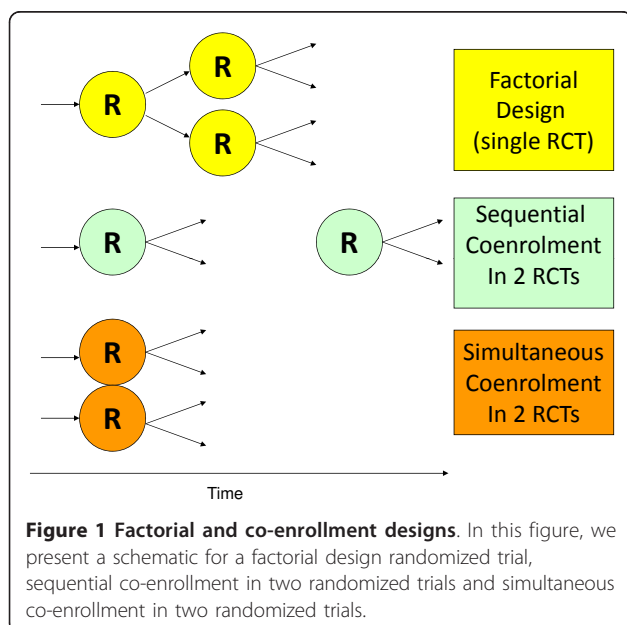
Materials and methods

PROTECT (Prophylaxis for ThromboEmbolism in Critical Care Trial) (clinicaltrials.gov NCT00182143) was a randomized, blinded clinical trial comparing unfractionated heparin to dalteparin for thromboprophylaxis [8].

Patients considered eligible were ≥ 18 years old, weighed > 45 kilograms, and were expected to remain in ICU > 72 hours. Exclusion criteria were admission diagnosis of trauma, neurosurgery or orthopedic surgery, need for therapeutic anticoagulation, receipt of > 72 hours of heparin, contraindication to heparin, blood or pork products, pregnancy, life support limitation, and prior enrollment in this or a related trial. The primary outcome was proximal leg deep vein thrombosis (DVT). Other outcomes were pulmonary embolism, venous thromboembolism, bleeding, heparin-induced thrombocytopenia, duration of mechanical ventilation, ICU and hospital stay, and ICU and hospital mortality. PROTECT was conducted over four years from May 2006 to June 2010 in 67 ICUs in Canada, the United States, the United Kingdom, Australia, Brazil and Saudi Arabia, as published previously [9].

Ethical approval was obtained from each participating Institutional Research Board (listed at the end of the manuscript under PROTECT Collaborators). In-person informed consent was required prior to randomization. Deferred consent was not permitted. For substitute decision-makers not in hospital, initial telephone consent, followed by in-person consent when possible, was approved in 16 of the 67 (23.9%) centers.

Beginning and throughout the trial, the PROTECT Steering Committee reviewed each multicenter protocol to decide whether co-enrollment was admissible, using Canadian Critical Care Trials Group guidelines [10]. These guidelines outline important scientific (for example, interacting interventions), psychosocial (for example, family stress) and logistic (for example, research coordinator workload) factors to consider. The general approach to co-enrollment was that all reasonable efforts should be made to minimize the exclusion of patients co-enrolled in another trial if they would likely represent those patients to whom trial results would possibly be applied in practice, as long as biologic interaction of the interventions being tested in the two trials seemed highly implausible. Dialogue between the principal investigator and steering committees of each multicenter study determined whether co-enrollment would impact the scientific integrity of either study. When relevant, this was reasoned at the Canadian Critical Care Trials Group or the Australian and New Zealand Intensive Care Society Clinical Trials Group meetings for refutation or ratification. If co-enrollment was endorsed, each participating center handled the relevant study governed by formal or informal co-enrollment policies of their ICU or hospital Institutional Review Board. Local policies could deny co-enrollment approved centrally. Local, single-center study co-enrollment could also be approved after agreement with the PROTECT Steering Committee and the relevant consortium.



Decisions were revisited if emerging evidence required reconsideration (Figure 2). All other studies into which patients were enrolled before, concurrent with, or subsequent to PROTECT were documented on case report forms.

One example was co-enrollment into the Age of Blood Evaluation Study (ABLE, ISRCTN44878718). ABLE is a randomized trial evaluating mortality following transfusion of red blood cells stored up to one week versus stored up to 42 days [11]. Both PROTECT and ABLE investigators initially endorsed co-enrollment. Months later, an observational trauma study suggested that among a subgroup of patients transfused with more than five units, when patients received blood stored less than, versus more than, 28 days, DVT rates (16.7% versus 34.5%, $P = 0.006$), and mortality rates (13.9% versus 26.7% $P = 0.02$) were lower [12]. If prolonged blood storage is thrombophilic in trauma, this could similarly increase DVT risk in critically ill medical-surgical patients. In reconsidering PROTECT and ABLE co-enrollment, we sought additional evidence.

Using an existing prospective observational study database of 261 medical-surgical ICU patients screened for DVT [13], we evaluated age of transfused blood as an additional DVT risk factor. We also examined red blood cell transfusion as a possible risk factor in this population because in 349 trauma patients, transfusions increased DVT risk [14]. We found that 126 (48.3%) patients had at least one transfusion, and patients had a median of four (interquartile range; IQR 2, 8) units. Multivariable analyses documented that neither red blood cell transfusion nor storage age predicted DVT in medical-surgical patients. Trends were counter to findings in trauma (for example, red blood cells stored for ≤ 7 days had a higher associated DVT risk compared to > 7 days (hazard ratio 5.3; 95% CI 1.3 TO 22.1)) [15]. Based on inconclusive research evidence, the PROTECT and ABLE Steering Committees affirmed co-enrollment into these trials. Given the PROTECT sample size, we anticipated similar transfusion rates and similar age of red blood cells transfused in the two arms. The ABLE trial now includes venous thromboembolism as a tertiary outcome.

Statistical analysis

We reported proportions with 95% confidence intervals (CI), and mean and standard deviation (SD) or median and IQR. We compared groups using Chi square, t-test and Fisher's Exact test. We examined univariate associations between co-enrollment rates (the dependent variable) and other factors (independent variables) related to characteristics of the patient, research coordinator, center and trial. A P -value of < 0.01 was considered statistically significant.

We conducted multivariable logistic regression analyses. To avoid incorporation of highly correlated independent

variables into the model, we selected one of four measures of research coordinator experience, one of three measures of research infrastructure, and research consortium affiliation rather than country. The following independent factors were analyzed: patient factors (age, sex, Acute Physiology and Chronic Health Evaluation (APACHE) II score, medical versus surgical status); individual consenting (substitute decision-maker or patient); research coordinator factors (years of experience obtaining consent for studies in the ICU when PROTECT began); center factors (number of ICU beds; number of full time research staff; national research consortium affiliation (Canadian Critical Care Trials Group or the Australian or New Zealand Intensive Care Society Clinical Trials Group); and year (pilot trial or year 1, 2, 3 and 4 of the full trial). Results are summarized using odds ratios (OR) with 95% CI. A P -value of < 0.01 was considered statistically significant.

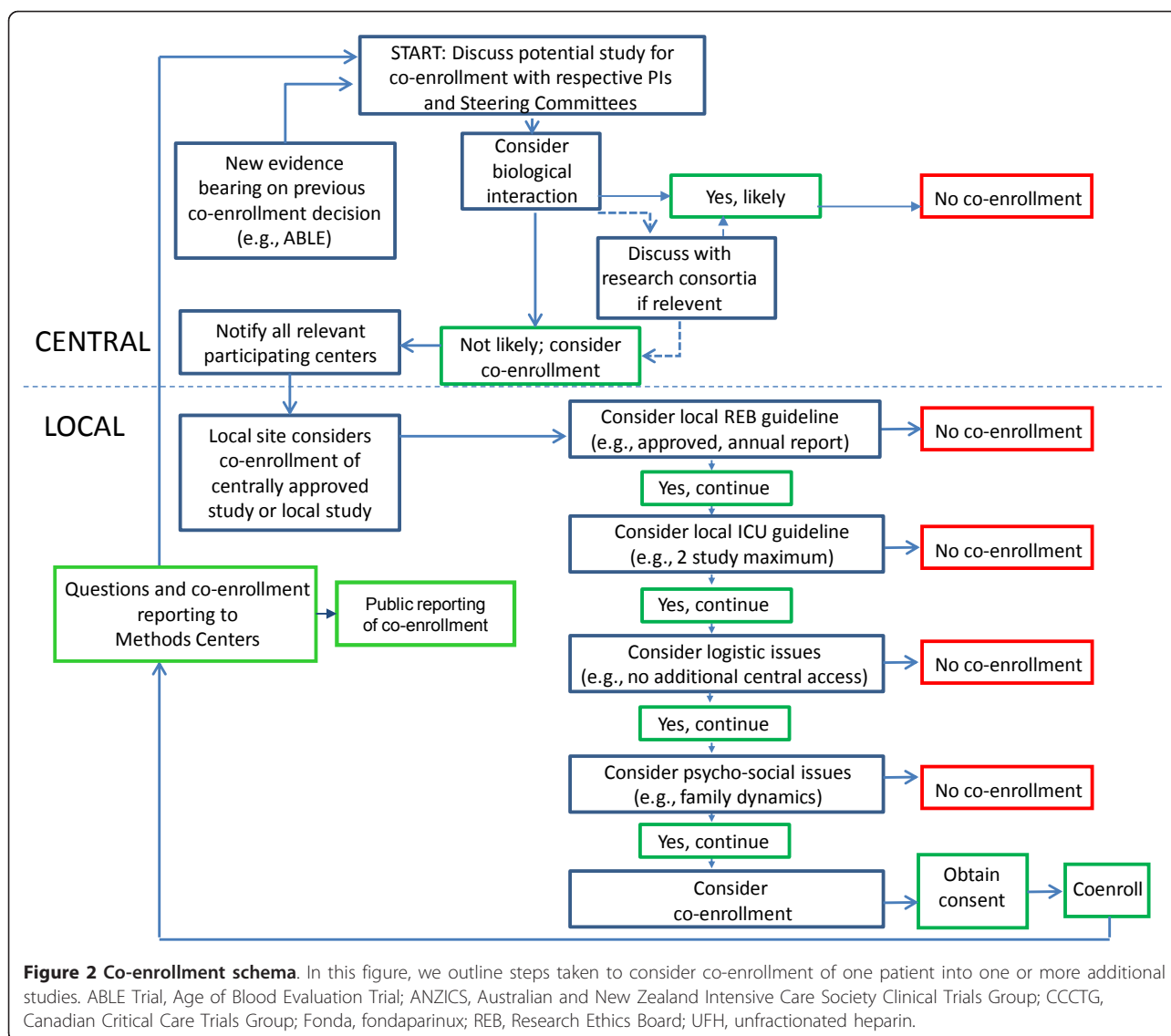
We calculated the proportion of patients in each arm of the PROTECT trial who were co-enrolled. To evaluate whether co-enrollment affected patient safety, we re-analyzed the proportion of patients in each arm who had serious adverse events. To evaluate whether trial results would be any different without co-enrolled patients, we re-analyzed overall results excluding these patients.

Results

In 67 participating ICUs, 3,746 patients were enrolled in PROTECT. Consent was declined for 810 patients. Patients who were not enrolled in PROTECT due to enrollment in another study represented 65 of 2,288 patients (2.8%) who were eligible but not randomized. Those 65 patients were enrolled in 71 other studies, 41 (63.1%) of which were industry-funded.

Among the 3,746 patients in PROTECT, 713 (19.0%) were co-enrolled in at least one other study (53.6% in a randomized trial, 37.0% in an observational study and 9.4% in both types of studies). Co-enrollment rates across participating centers ranged from 0 to 53.9% and across participating countries from 1.1 to 26.0%. No co-enrollment occurred in 30 of 67 (44.8%) centers.

Factors associated with co-enrollment in univariate analysis are presented in Table 1. Patients with higher illness severity and medical conditions were more likely to be co-enrolled than patients who were less ill and surgical. Substitute decision-makers were more likely to agree to co-enrollment than patients. Research coordinators with more ICU experience, and those with more experience obtaining consent in the ICU, were more likely to co-enroll patients than those with less experience. Centers with more ICU beds and centers affiliated with national research consortia were more likely to co-enroll than others. A higher proportion of patients were co-enrolled in Canada, the United States and Australia than in Brazil, Saudi Arabia and the United Kingdom. Co-enrollment



was less common in the pilot phase of the trial than the main trial.

In Table 2, we present the six factors independently associated with co-enrollment in the multivariable analysis. In order of decreasing strength of association, these were: phase of the trial (all ORs > 8 for recruitment beyond the pilot phase); center affiliation with a research consortium (OR 5.59, 3.49 to 8.95); center size (all ORs > 10 for ICUs with > 15 beds); substitute decision-makers providing consent rather than patients (OR 3.31, 2.03 to 5.41); experience of research coordinator (OR 2.67, 1.74 to 4.11 for > 10 years of experience compared to persons whose first trial was PROTECT); and patient illness severity (odds ratio (OR), 95%CI 1.35 (1.19 to 1.53 for each 10-point increase in APACHE II score).

Table 3 summarizes characteristics of the studies into which PROTECT patients were co-enrolled. The majority

were co-enrolled into another academic investigator-initiated study (97.5%). Of 713 patients, 592 (83.0%) were co-enrolled in one other study, 93 (13.0%) were co-enrolled in two studies, and 28 (3.9%) were co-enrolled in three or more studies.

Of 865 co-enrollments involving 713 patients, the most common other international trials tested pharmacotherapy, intensive glucose control, sedation interruption and high frequency oscillation (Table 1). Observational studies were both quantitative (for example, registries, audits, quality improvement studies, diagnostics, translational biology or long-term follow-up studies), and qualitative (for example, interviews, focus groups).

The proportion of patients co-enrolled in any study was similar between the dalteparin group and the unfractionated heparin group (352 (18.8%) versus 361 (19.3%), $P = 0.74$). There were no differences between groups in

Table 1 Characteristics of factors associated and not associated with co-enrollment

	Total patients (N = 3,746)	Not co-enrolled (N = 3,033)	Co-enrolled patients (N = 713)	P-value
Patient characteristics				
Age, mean (SD)	61.4 (16.5)	61.4 (16.6)	61.4 (15.9)	0.996
Female, N (%)*	1,614 (43.3)	1,319 (43.8)	295 (41.4)	0.257
APACHE II score, mean (SD)**	21.5 (7.8)	21.1 (7.8)	23.3 (7.6)	< 0.001
Medical admission type, N (%)	2,831 (75.6)	2,262 (74.6)	569 (79.8)	0.004
Person consenting, N (%)***				
Patient	354 (9.5)	335 (11.1)	19 (2.7)	< 0.001
Substitute decision-maker	3,380 (90.5)	2,686 (88.9)	694 (97.3)	
Research coordinator characteristics				
Years of non-research ICU experience, N (%)				
0 years	572 (15.3)	491 (16.2)	81 (11.4)	0.003
> 0 to 10 years	1,254 (33.5)	1,017 (33.5)	237 (33.2)	
> 10 years	1,920 (51.3)	1,525 (50.3)	395 (55.4)	
Years of procuring consent for clinical studies in ICU, N (%)				
0 years	302 (8.1)	268 (8.8)	34 (4.8)	< 0.001
> 0 to 10 years	2,652 (70.8)	2,276 (75.0)	376 (52.7)	
> 10 years	792 (21.1)	489 (16.1)	303 (42.5)	
Center characteristics				
Number of ICU beds screened, N (%)				
< 15 beds	420 (11.2)	414 (13.6)	6 (0.8)	< 0.001
15 to 20 beds	1,622 (43.3)	1,218 (40.2)	404 (56.7)	
> 20 beds	1,704 (45.5)	1,401 (46.2)	303 (42.5)	
Full time ICU research staff, N (%)				
< 1 FTE	286 (7.6)	280 (9.2)	6 (0.8)	< 0.001
1 FTE	740 (19.8)	622 (20.5)	118 (16.5)	
> 1 FTE	2,720 (72.6)	2,131 (70.3)	589 (82.6)	
Formal trials group affiliation, N (%)				
Yes	3,224 (86.1)	2,533 (83.5)	691 (96.9)	< 0.001
No	522 (13.9)	500 (16.5)	22 (3.1)	
Country, N (%)				
Canada	2,456 (65.6)	1,818 (59.9)	638 (89.5)	< 0.001
Australia	768 (20.5)	715 (23.6)	53 (7.4)	
Brazil	275 (7.3)	272 (9.0)	3 (0.4)	
Saudi Arabia	138 (3.7)	135 (4.5)	3 (0.4)	
United States	91 (2.4)	77 (2.5)	14 (2.0)	
United Kingdom	18 (0.5)	16 (0.5)	2 (0.3)	
Characteristic of enrollment phase, N (%)				
Pilot trial	128 (3.4)	126 (4.2)	2 (0.3)	< 0.001
Year 1	556 (14.8)	504 (16.6)	52 (7.3)	
Year 2	826 (22.1)	626 (20.6)	200 (28.1)	
Year 3	1,009 (26.9)	761 (25.1)	248 (34.8)	
Year 4	1,227 (32.8)	1,016 (33.5)	211 (29.6)	

In this table, we compare patients, person consenting, approaches to consent and research environment associated with co-enrollment versus no co-enrollment. Formal trials group affiliation refers to a center associated with either the Canadian Critical Care Trials Group or the Australian and New Zealand Intensive Care Society Clinical Trials Group. P-values refer to results of univariate analyses. APACHE II score, Acute Physiology and Chronic Health Evaluation II score; ICU, intensive care unit; SD, standard deviation.

patients enrolled in any randomized trial (209 (11.2%) versus 239 (12.8%), $P = 0.14$), or the proportion in each group enrolled in any of the five most common co-enrollment studies (197 (10.5%) versus 223 (11.9%),

$P = 0.20$). Twenty PROTECT patients were co-enrolled in ABLE (9 of 1,873 (0.5%) in the dalteparin group and 11 of 1,873 (0.6%) in the unfractionated heparin group), $P = 0.82$.

Table 2 Factors independently associated with co-enrollment in multivariate analysis

	Odds ratio (95% CI)	P-value
Patient demographics		
Age (10-year increase)	0.96 (0.91, 1.02)	0.155
Female	0.92 (0.77, 1.11)	0.403
APACHE II score (10-point increase)	1.35 (1.19, 1.53)	< 0.001
Medical versus surgical	1.26 (1.01, 1.57)	0.041
Individual consenting		
Substitute decision-maker versus patient	3.31 (2.03, 5.41)	< 0.001
Years of procuring consent for clinical studies in ICU		
> 0 to 10 years versus 0 years	0.83 (0.55, 1.25)	< 0.001
> 10 years versus 0 years	2.67 (1.74, 4.11)	
Center size (beds screened for PROTECT patients)		
15 to 20 beds versus < 15 beds	20.06 (7.56, 53.25)	< 0.001
> 20 beds versus < 15 beds	13.76 (5.15, 36.80)	
Full time ICU research staff		
1 FTE versus < 1 FTE	1.13 (0.41, 3.11)	0.966
> 1 versus < 1 FTE	1.10 (0.40, 3.03)	
Formal trials group affiliation		
Yes versus no	5.59 (3.49, 8.95)	< 0.001
Year of PROTECT		
Year 1 versus Pilot	8.22 (1.95, 34.61)	< 0.001
Year 2 versus Pilot	32.89 (7.95, 135.98)	
Year 3 versus Pilot	38.15 (9.24, 157.51)	
Year 4 versus Pilot	24.53 (5.94, 101.25)	

In this table, we present the independent factors associated with co-enrollment of one patient into two or more studies identified by multivariate regression analysis, presented using odds ratios (OR) and 95% confidence intervals (95% CI). P-values refer to results of multivariate analyses. ANZICS, Australian and New Zealand Intensive Care Society Clinical Trials Group; APACHE II score, Acute Physiology and Chronic Health Evaluation II score; CCCTG, Canadian Critical Care Trials Group; FTE, full time equivalent; ICU, intensive care unit.

Among patients co-enrolled in other randomized trials, rates of serious adverse events were similar between the dalteparin (2 of 209, 1.0%) and unfractionated heparin (0 of 239, 0.0%) groups, $P = 0.14$, as per the main trial findings (7 of 1,873, 0.4%) versus 6 of 1,873, 0.3%), respectively, $P = 0.74$. Protocol violations were also similar (data not shown). In Table 4, we show that the overall PROTECT results excluding patients co-enrolled in other randomized trials, which were no different than the results of all patients randomized [9]. That is, pulmonary embolism rates were lower in patients receiving dalteparin compared to those receiving unfractionated heparin; rates of DVT, venous thrombosis and major bleeding were similar. No patients were withdrawn or lost to follow-up whether co-enrolled or not.

Discussion

In this international heparin thromboprophylaxis trial, one-fifth of patients were co-enrolled in at least one other study. Half of the co-enrollments were in randomized trials, although a variety of study designs were involved. Co-enrollment was limited to one or two

additional studies in 83% and 13% of patients, respectively. These findings are consistent with membership surveys of research consortia indicating that two was the median number of randomized trials into which one patient was enrolled [5].

Multivariate analysis showed that consent encounters with substitute decision-makers were more likely to involve co-enrollment than those with patients. This suggests that more seriously ill patients are frequently eligible for several studies, yet too sick to make decisions themselves, congruent with the finding that patients who were co-enrolled were more seriously ill than those who were not. Substitute decision-makers may seek several research opportunities while helping to advance science, so-called conditional altruism [16].

Research coordinators with greater consent experience were more likely to co-enroll than others, suggesting that professional maturity may foster sound judgment about approaching persons for co-enrollment, whether training enhances comfort and success with co-enrollment is unclear. Co-enrollment occurred more often in larger ICUs, and in centers affiliated with a national consortium, perhaps reflecting group norms. More frequent

Table 3 Co-enrollment study characteristics.

	N (% of 713 patients)
Type of other study	
Randomized trial	380 (53.3)
Observational study	265 (37.2)
Both	68 (9.5)
Genesis of other study	
Investigator-initiated	695 (97.5)
Industry-initiated	15 (2.1)
Both	3 (0.4)
CCCTG or ANZICS affiliated study	
Yes	451 (63.3)
No	181 (25.4)
Both	81 (11.4)
Number of studies into which patients were co-enrolled	
1	591 (82.9)
2	94 (13.2)
3	25 (3.5)
4*	3 (0.4)

In this table, among the 713 patients who were co-enrolled in another study, we present the co-enrollment study type (randomized trial, observational study), study genesis (investigator-initiated versus industry-initiated), affiliation with a research consortia, and the number of studies into which PROTECT patients were co-enrolled. The bottom half of the table outlines, of the 865 co-enrollments, which studies were involved. ANZICS, Australian and New Zealand Intensive Care Society Clinical Trials Group; CCCTG, Canadian Critical Care Trials Group.

during the full trial than the pilot phase, facility with co-enrollment may have increased over time.

Participation in another study was the reason why 65 eligible patients were not enrolled in PROTECT; 63% of these studies were industry-initiated. Only 2% of PROTECT patients were co-enrolled in industry studies. Generally, industry-funded trials, compared to other trials, are

more likely to exclude individuals due to age, comorbidities and concomitant medications, raising concerns about their generalizability [17]. However, if industry trials prohibit co-enrollment in academic studies, selection bias in academic trials may result, as well as slower completion, thereby delaying answers to publicly motivated research questions. Certainly, co-enrollment in trials of investigational drugs or devices is imprudent due to difficulty monitoring safety and interpreting harm. Since patients in the investigator-informed, industry-funded trial comparing drotrecogin alfa to placebo in patients with persistent septic shock (PROWESS-SHOCK, NCT00604214) [18] would typically receive heparin thromboprophylaxis in the absence of contraindications, PROTECT co-enrollment was permitted. We identified three patients who were eligible for PROTECT but not recruited because of enrollment in PROWESS-SHOCK, and no PROTECT patients who were co-enrolled in PROWESS-SHOCK.

One major focus regarding permissible co-enrollment in two academic trials is the biologic plausibility of the two interventions having a potentiating or attenuating effect on each other. Having identical primary outcomes in two academic trials would not be a sole criterion for prohibiting co-enrollment, especially when treatment effects are expected to be modest, which is common in critical care. For example, if two trials had the same primary outcome of mortality (for example, a trial comparing starch resuscitation vs normal saline in septic shock and intensive insulin therapy vs liberal glucose management in heterogeneous ICU patients), the two interventions would likely be considered unrelated, and co-enrollment would be permitted, because starch and antioxidants would not be known to mediate their effect on mortality through related mechanisms. Several additional scientific issues need careful

Table 4 PROTECT results excluding patients co-enrolled in another randomized trial

N (%)	Dalteparin (N = 1,873) All patients	UFH (N = 1,873) All patients	Hazard ratio (95%CI)	Dalteparin (N = 1,664) Not co-enrolled in RCT	UFH (N = 1,633) Not co-enrolled in RCT	Hazard ratio (95%CI)
Primary outcome: proximal leg deep vein thrombosis	94 (5.1)	108 (5.9)	0.91 (0.68, 1.23)	83 (5.0)	93 (5.7)	0.87 (0.63, 1.21)
Any pulmonary embolism	22 (1.2)	42 (2.3)	0.48 (0.27, 0.84)	19 (1.1)	35 (2.1)	0.48 (0.26, 0.89)
Any venous thromboembolism	150 (8.2)	184 (10.0)	0.87 (0.69, 1.10)	133 (8.0)	161 (9.9)	0.83 (0.64, 1.07)
Major bleeding	100 (5.5)	105 (5.7)	0.98 (0.73, 1.31)	88 (5.3)	93 (5.7)	0.94 (0.69, 1.28)
Heparin-induced thrombocytopenia	5 (0.3)	12 (0.7)	0.47 (0.16, 1.37)	5 (0.3)	10 (0.6)	0.56 (0.18, 1.67)
Hospital mortality	395 (21.7)	444 (24.3)	0.91 (0.79, 1.05)	372 (22.4)	391 (23.9)	0.95 (0.82, 1.10)

In this table we report the main results of the original trial including all patients, and results including only those patients, (209 in the dalteparin group and 239 in the unfractionated heparin group), who were not co-enrolled in another randomized trial (1,664 in the dalteparin arm and 1,633 in the unfractionated heparin arm). CI, confidence interval; RCT, randomized clinical trial; UFH, unfractionated heparin.

consideration regarding co-enrollment, such as projected impact on statistical power, outcome ascertainment bias, increased risk of adverse events and the ultimate interpretation of study results. We recommend widespread consultation about the merits and demerits of various co-enrollment pairs before and during conduct of a trial.

Furthermore, specific approaches to data collection and analysis can be established *a priori* if concerns exist about co-enrollment. Shared definitions and case report forms for use across studies could help [3], as we used for PROTECT and ABLE. New research influencing previous co-enrollment decisions should prompt revisiting previous decisions as studies unfold. Documenting consecutive and concurrent co-enrollment eligibility and consent rates throughout a trial, and transparent reporting of co-enrollment upon completion, including effect modification and risk of harm, will help to disseminate co-enrollment patterns, and provide data to examine its actual rather than perceived impact. If concerns exist and trialists are willing to exchange randomization codes, unadjusted and adjusted analyses can be conducted to evaluate the impact not just of substantial co-enrollment of patients in one trial on the results of the other trial, and vice versa, but also the impact of each specific allocation arm.

Although an understanding of all available treatment options is important for informed consent for medical therapy, there is no similar perception that patients should be informed of all available studies for which they are eligible. Indeed, most human subjects research discourse deals with protection from harm rather than opportunity for participation [1], which is particularly germane to co-enrollment. More open discussion will help to elucidate key ethical issues, since the vulnerability of critically ill patients [19] raises concern about adverse effects from co-enrollment. We found that PROTECT patients co-enrolled in randomized trials were not more likely to have serious adverse events or protocol violations compared to patients who were not co-enrolled. *Post hoc* analyses of PROTECT omitting patients co-enrolled in randomized trials yielded the same overall results as the main analysis. Finally, no PROTECT patients were lost to follow-up, thus, no co-enrolled patients were withdrawn.

In 2007, a tri-national survey showed that only 11% of respondents indicated that their local Institutional Review Board had a co-enrollment policy, whereas 35% reported a local ICU guideline [5]. Co-enrollment guidelines exist for adult resuscitation studies [4], pediatric [20] and adult [10] critical care. Public health mandates to answer research questions quickly during pandemics have encouraged co-enrollment of patients in treatment and observational studies [21]. Professional position statements about whether, when, why and how to co-enroll will raise awareness and facilitate stakeholder dialogue.

Limitations of this study include our inability to explore the decisional burden on substitute decision-makers, patients and research coordinators. However, in another four-month single center study, we found consent rates similar for any single enrollment (84%) and co-enrollment (79%) opportunity [22]. We could not document rates or reasons for no co-enrollment, or which person declined (for example, patient, substitute decision-maker, physician, surgeon, anesthesiologist). Examining the choice of which study to pursue if a patient was eligible for more than one was beyond the scope of this project. However, investigators report that when approaching persons for co-enrollment in a randomized trial, they consider trial rigor and relevance, potential for benefit or harm, consortium affiliation and remuneration [5].

Strengths of this study include comprehensive documentation of co-enrollment throughout a multicenter trial. Investigators used a prospective, transparent framework for co-enrollment decisions, independently examining each pair of studies, guided by independent Institutional Review Boards, and research consortia. Using multivariate analysis, significant predictors of co-enrollment were identified, adjusting for confounding. We examined the impact on patient and trial outcomes. Representation from diverse ICUs and countries enhances the generalizability of these findings, which may apply to other academic trials testing currently available interventions.

Conclusions

Co-enrollment was common in this thromboprophylaxis trial, and was strongly associated with specific features of the patients, research personnel, setting and study. Co-enrollment was an effective, feasible method to enhance recruitment, provided that the patients or substitute decision-maker, clinicians, principal investigators, steering committees, research consortium and local Institutional Review Boards agreed. Co-enrollment did not influence overall trial results, patient safety or adverse events. Further scientific debate, ethical analysis and research are needed on the complex topic of co-enrollment for critically ill patients.

Key messages

- In this international heparin thromboprophylaxis trial of 3,746 patients, one-fifth of patients were co-enrolled in at least one other study. Half of the co-enrollments were in randomized trials, although a variety of study designs were involved and almost all co-enrollments were in academic investigator-initiated studies.
- In decreasing strength of association, six factors were independently associated with co-enrollment: later phase of the trial compared to the pilot phase,

center affiliation with a research consortium, larger center size, substitute decision-makers providing consent rather than patients, greater research coordinator experience and higher patient illness severity.

- Co-enrollment did not influence overall trial results, patient safety or adverse events.
- Before and during a trial, we suggest widespread consultation among investigators, clinicians, trial steering committees, research consortia and local Institutional Review Boards about the scientific, psychosocial and logistic effects of various co-enrollment pairs.
- Transparent reporting, scholarly discourse, ethical analysis and further research are needed on the complex topic of co-enrollment during critical illness.

Abbreviations

ABLE: Age of Blood Evaluation; APACHE: Acute Physiology and Chronic Health Evaluation; CI: confidence interval; DVT: deep vein thrombosis; HIV: human immunodeficiency virus; ICU: intensive care unit; IQR: interquartile range; OR: odds ratio; PROTECT: Prophylaxis for ThromboEmbolism in Critical Care Trial; SD: standard deviation

Authors' contributions

DC, EM, FC and NZ conceived of the study. DC, EM, FC, NZ, IW, TM, AM, FC and MCF designed the study. NZ and SV coordinated the study. DC obtained funding. EM, OS, NZ, IW, TM, AM, FC, SV and MCF collected data. DC, RF, NA, JM and MM consulted on methods. DHA performed the analyses. YA, NA, RF and DC designed the figure. DHA, DC, SF, TC, RF, YA, CW, NO, RH, NA, JM and MM interpreted the data. DC, EM, OS, DHA and MM wrote the draft. All authors read and approved the final manuscript for publication.

Competing interests

The authors declare that they have no competing interests.

Acknowledgements

This study was funded by a North American Meeting Grant of the Canadian Institutes for Health Research which had no role in the design, conduct, analysis, interpretation or write-up of this report. D Cook, N Zytaruk and D Heels-Ansdell had full access to all the data in the study and take responsibility for the integrity of the data and the accuracy of the data analysis.

We appreciate the interest of family members and patients in research, which enabled the main trial and this study. We thank research coordinators and physicians from all participating PROTECT centers for their collaboration. We are grateful to the Canadian Critical Care Trials Group and the Australian and New Zealand Intensive Care Society Clinical Trials Group and all participating centers for their engagement.

D Cook is a Research Chair of the Canadian Institutes for Health Research. R Fowler is a Clinician Scientist of the Heart and Stroke Foundation of Canada. M Meade is an RCT Mentor of the Canadian Institutes for Health Research. We thank L Hand, K Porretta, C Wynne, D Foster and P Farias for helpful comments on earlier drafts.

PROTECT Collaborators

Clinical Collaborators

Canadian Investigators

- Dr Deborah Cook (Lead), Ellen McDonald, Andrea Tkaczyk, France Clarke; Pharmacist: Christine Wallace; St Joseph's Healthcare, Hamilton
- Drs Rick Hall and Graeme Rocker, Lisa Julien, Debbie Wright, Caroline Roy, Judy Theriault, Susan Pleasance; Pharmacy Technicians: Debi Snow and Shannon Herbert; Capital Health Queen Elizabeth II Health Science Center, Halifax
- Dr Maureen Meade, Lori Hand; Pharmacy Technician: Maya Biljan; Hamilton Health Sciences, Hamilton General Hospital, Hamilton

- Dr Andreas Freitag, Christine Wynne, Mark Duffett, Michelle Kho, Nicole Zytaruk; Pharmacy Technician: Karen Currie; Hamilton Health Sciences, McMaster Hospital, Hamilton
- Dr John Granton, Andrea Matte, Paulina Farias, Leslie Chu, Nancy Brockest, Stephanie Go, Margaret McGrath-Chong, Madison Dennis, Marc Lipkus, Emily Stern, Ryan Albert; Pharmacy: Ron Seto, Muhammad Zuberi, Jie Ming and Laura Arus-Pampin, Muhammad Walid, Robert Solek, Kim De Freitas; University Health Network, Toronto General Hospital, Toronto
- Drs Stephan Langevin, François Lauzier and Alexis F Turgeon, Martine Blais, Maxime Beauparlant, Julie Asselin, Caroline Roy, Chantal Gagné, Marie Thibodeau; Pharmacists: Anik Rioux and Tuong-Vi Tran; Hôpital de l'Enfant-Jésus, Quebec City
- Dr Germain Poirier, Isabelle Neas, Sandrine Spearson; Pharmacist: Betty Ton; Charles Hôpital Charles-LeMoyne, Longueuil
- Drs Lauralyn McIntyre and Paul Hébert, Irene Watpool, Tracy McArdle, Claude Gaudert, Paule Marchand, Carson Davidson; Pharmacists: Anne-Marie Dugal and Susan Fetzer; Ottawa Hospital, General Campus, Ottawa
- Dr Joe Pagliarello, Mary-Jo Lewis, Erin Murphy, Julia Foxall; Pharmacist: Sherry Weir; Ottawa Hospital Civic Campus, Ottawa
- Dr Yoanna Skrobik, Johanne Harvey, Stefania Chitu; Pharmacists: Marceline Quach and Linda Pinet; Hôpital Maisonneuve-Rosemont, Montréal
- Dr Martin Albert, Carole Sirois, Carole Nadon, Stéphanie Dolle, Audrey-Anne Gosselin, Patrice Deroy; Pharmacists: Anne Julie Frenette and David Williamson; Hôpital du Sacré-Coeur de Montréal, Montréal
- Dr Sangeeta Mehta, Cheryl Ethier, Sam Tirgari, Lindsay Steinberg, Rod McDonald, Vidhya Sivanantham, Kristofer Bandayrel, Friederike Quittnat Pelletier, Marnie Kramer-Kile, Maedean Brown, Scott Kim; Pharmacist Holly Leung; Mount Sinai Hospital, Toronto
- Dr Robert Fowler, Nicole Marinoff, Karen Code, Boris Bojilov, Derek Parsotam; Pharmacist: John Iazzetta; Sunnybrook Hospital, Toronto
- Dr John Marshall, Orla Smith, Beth Fry, Kerri Porretta, Yoon Lee, Jeanna Morrissey, Victoria Wen; Pharmacy Technicians: Laura Parsons and Ann Kosinski; St Michael's Hospital, Toronto
- Dr John Muscedere, Susan Fleury, Nicole Godfrey, Sharlene Hammond, Elizabeth Mann, Monica Myers, Amber Robinson; Pharmacist: Chris Grey; Kingston General Hospital, Kingston
- Drs Sean Keenan and Steven Reynolds, Miroslav Svetik, Mary Van Osch; Pharmacist: Anne-Marie Liberman; Royal Columbian Hospital, Westminister
- Drs Dean Chittock and Vinay Dhingra, Maureen Gardner, Susan Logie, Denise Foster, Roger Autio, Dara Davies, Pia Ganz, Laurie Smith; Pharmacy: Jane Day, Kaldip Mattu and Judy Yip; Vancouver General Hospital, Vancouver
- Dr Peter Dodek, Betty Jean Ashley, Sheilagh Mans; Pharmacist: Mara Pavan; St. Paul's Hospital, Vancouver
- Dr Chip Doig, Linda Knox, Crystal Wilson, Kevin Champagne; Pharmacist: Angela Kayall Peters; Calgary University Foothills Hospital, Calgary
- Dr Niall Ferguson, Andrea Matte, James Stevenson, Joel Elman, Madison Dennis; Pharmacist: Jenn Tung, Robert Solek, Kim De Freitas, Nga Pham; University Health Network, Toronto Western Hospital, Toronto
- Dr Jim Kutsogiannis, Patrica Thompson, Norine Whalen; Pharmacist: Liz Helboe; Royal Alexandra Hospital, Edmonton
- Dr François Lellouche, Marie-Claude Ferland, Patrick Dussault, Caroline Jacob, Marie-Ève Morneau, Nancy Laberge; Pharmacist: Nathalie Chateaubert; Institut Universitaire de Cardiologie et de Pneumologie de Québec, Québec
- Dr Tim Karachi, Andrea Tkaczyk; Pharmacy Technician: Diane Lourenco; Hamilton Health Sciences, Juravinski Hospital, Hamilton
- Dr Michael Jacka, Marleen Irwin, Carmen Chan, Leeca Sonnema, Kelly Marsh, Jennifer Maurer, Tamara Kreidl, Candice Varden, Carey Kinjerski; Pharmacist: Noelle Carey; University of Alberta, Edmonton
- Dr Chip Doig, Linda Knox, Crystal Wilson, Kevin Champagne; Pharmacist: Angela Kayall Peters; Calgary University Peter Lougheed Hospital, Calgary
- Dr Kosar Khwaja, Laura Banici, Carole Sirois, Lena Havell; Pharmacists: Gilbert Matte and Kathleen Normandin; Montreal General Hospital, Montréal
- Dr Gordon Wood, Fiona Auld, Leslie Atkins; Pharmacist: John Foster-Coull; Vancouver Island Health Authority, Vancouver
- Drs Olivier Lesur and François Lamontagne, Sandra Proulx; Pharmacist: Sylvie Cloutier, Brigitte Bolduc, Marie-Pierre Rousseau, Julie Leblond; Centre Hospitalier Universitaire de Sherbrooke and Centre de Recherche Clinique Étienne-Le Bel, Sherbrooke
- Dr Kosar Khwaja, Laura Banici, Carole Sirois, Lena Havell; Pharmacists: Gilbert Matte and Kathleen Normandin; Royal Victoria Hospital, Montreal

- Drs Gerald Hollinger and Vasanti Shende, Vanessa Belcastro; Pharmacist: Jane Martin; Guelph General Hospital, Guelph
 - Dr Bill Plaxton, Anders Foss; Pharmacy Technicians: Heather McDougall, Sharon Morris and Goran Petrovic; Grand River Hospital, Kitchener
 - Dr Bojan Paunovic, Kym Wiebe, Nicole Marten; Pharmacist: Denise Sawatzky; St Boniface Hospital, Winnipeg
 - Dr Jonathan Eisenstat, Tammy Doerle; Pharmacist: Linda Skinner; Lakeridge Health, Oshawa
 - Drs Steven Reynolds and Sean Keenan, Sheilagh Mans; Pharmacist: Ray Jang; Surrey Memorial Hospital, Surrey
 - Dr Michael Sharpe, Mona Madady; Pharmacist: Chandika Mankanjee; London Health Sciences Center, London
 - United States Investigators
 - Dr James Klinger, Barbara Smithson; Pharmacist: Andrea Monckeborg; Rhode Island Hospital, Providence
 - Dr Nicholas E Vlahakis (Lead), Laurie Meade; Pharmacist: Debbie Bauer; Mayo Clinic, Rochester
 - Dr Michael Cox, Jackie O'Brien, Catherine Krause; Pharmacist: Sandra Ahearn; St John's Mercy Medical Center, St Louis
 - Drs Joseph Nates and Sajid Haque, Deidre Mooring, Rose Erfe, Paula Nickerson; Pharmacist: Kim McConnell; University of Texas MD Anderson Cancer Center, Houston
 - United Kingdom Investigators
 - Drs Marlies Ostermann (Lead) and David Treacher, Tony Sherry, John Smith, Barnaby Sanderson, Josephine Ng, John Brooks, Ling Lim, Katie Lei; Pharmacists: Paul Tunstell and Dr Cathy McKenzie, Francesco Cicirello; King's College London, Guy's and St Thomas' Hospital, London
 - Australian Investigators
 - Drs Jamie Cooper (Lead) and Andrew Davies, Shirley Vallance, Cindy Weatherburn, Jasmin Board, Victoria Bennett; Pharmacists: Anne Mak and Sook Wern Chua; Alfred Hospital, Melbourne
 - Drs Simon Finfer and Naresh Ramakrishnan^(deceased), Simon Bird, Julie Potter, Anne O'Connor, Susan Ankers; Pharmacist: Maggie Gibson; Royal North Shore Hospital, Sydney
 - Dr Jack Cade, Deborah Barge, Tania Caf, Belinda Howe; Pharmacist: Emma Michael; Royal Melbourne Hospital, Melbourne
 - Dr Rinaldo Bellomo, Glenn Eastwood, Leah Peck, Donna Goldsmith, Kim O'Sullivan; Lead Pharmacists: Dr Michael Ching, Jean Schmidt, Mei Ho and Bailey Lim; Austin Hospital, Melbourne
 - Drs David Ernest, Sam Radford, Ann Whitfield and Anthony Cross, Suzanne Elliott, Jaspreet Sidhu, Belinda Howe, Inga Mercer, Angela Hamilton^(deceased), Pharmacist: Paula Lee; Box Hill Hospital, Melbourne
 - Dr John Botha, Jodi Vuat, Sharon Allsop, Nina Fowler; Pharmacist Chui Yap; Frankston Hospital, Frankston
 - Drs Tim Crozier, Jonathan Barrett and Chris Wright, Pauline Galt, Carly Culhane, Rebecca Ioannidis, Sue Burton, Marnie Reily, Cyveen Weeraratna; Pharmacist: Helen Kopp; Monash Medical Centre, Melbourne
 - Dr Ian Seppelt, Leonie Weisbrodt, Robyn Bond; Pharmacists: Stella Suen and Jason Trinh; Nepean Hospital, Sydney
 - Dr David Evans, Justine Rivett, Stephanie O'Connor, Alex Poole; Pharmacist: Peter Slobodian; Royal Adelaide Hospital, Adelaide
 - Dr Clive Woolfe, Dorrilyn Rajbhandari, Caitlin Rees; Pharmacist: Justine Hay; Royal Prince Alfred Hospital, Camperdown
 - Drs John Edington and Jason Fletcher, Julie Smith, Catherine Boschert; Pharmacist: Richard Summers; Bendigo Health Care, Bendigo
 - Dr Graham Reece, Treena Sara, Kiran Nand; Pharmacist: Rabsima Ibrahim; Blacktown Hospital, Blacktown
 - Drs Andrew Bersten and Alex Gallus, Elisha Matheson, Margie O'Callaghan; Pharmacist: Kelly Woolley; Flinders Medical Center, Adelaide
 - Dr Neil Orford, Tania Elderkin, Melissa Fraser, Allison Bone, Tania Salerno, Anne Kinmonth; Pharmacist: Paul Muir; Barwon Health, Geelong Hospital, Geelong
 - Dr Subhash Arora, Bridget O'Bree, Katherine Shepherd; Pharmacists: Kerry Gray and Tu Vinh; Dandenong Hospital, Dandenong
 - Drs Alan Davey-Quinn and Martin Sterba, Bronwyn Ruth Johnson, Renee Xu, Francisco Hill; Pharmacist: Julie Thompson; Wollongong Hospital, Wollongong
 - Dr Rajaram Ramadoss, Josette Wood; Pharmacist: Eric Tah Wai Yap; Lyell McEwin Hospital, Adelaide
 - Brazilian Investigators
 - Dr Marcelo Garcia da Rocha (Co-Lead), Andréa Kramer, Martha Hädrich; Pharmacist: Patrícia Soares, Fernando Frosi; Santa Casa Hospital, Porto Alegre
 - Drs Nilton Brandao, Cassiano Teixeira and Cíntia Roehrig, Juliana Zeni; Pharmacist: Daniel Panizzi; Moinhos de Vento Hospital, Porto Alegre
 - Drs Suzana Alves da Silva and Rubens Costa Filho, Renato Correa Alves Moreira and Plínio N. Gomes and Rodrigo Biondi; Pharmacist: Marcia Caneca, Grazielle Silva, Pró Cardíaco Hospital, PROCEP, Rio de Janeiro
 - Drs Otavio Berwanger (Co-Lead) and Edson Romano, Anna Maria Buehler; Pharmacist: Marcelo Murad and Paulo Buononato; Hospital Coracao Research Institute HCor, São Paulo
 - Drs Helio Penna Guimarães and Renato D Lopes, Adriano Truffa, Rosana Nakamura, Lillian Mazza Barbosa; Pharmacist: Rosana Suemi Nakamura; Hospital São Paulo, São Paulo
 - Saudi Arabian Investigators
 - Dr Ismael Qushmaq (Lead), Jean Brennick, Sawsan Bassi; Pharmacist: Amnah Mukhtar, Majdah Attas and Amer Soliman; King Faisal Specialist Hospital and Research Center, Jeddah
 - Dr Mohammed Alsultan and Yaseen Arabi, Riette Brits; Pharmacist: Antoine Cherfan; King Saud Bin Abdulaziz University for Health Sciences, Riyadh
 - Dr Jamal Alhashemi, Sanaa Shalabi; Pharmacist: Randa Ainosah; King Abdulaziz University Hospital, Jeddah
 - Drs Yasser Mandourah and Nadeem Shaikh; Pharmacist: Shatha Shosho; Riyadh Military Hospital, Riyadh
 - Drs Manal Al-Hazmi and M. Ali Al-Azem, Trevor Wyngaard; Pharmacist: Yahya Moustafa; King Fahad Medical City Hospital, Riyadh
 - PROTECT Methods Center
 - Nicole Zytaruk, Lois Saunders, Suzanne Duchesne, Jennifer Southon, France Clarke, Bronwyn Barlow-Cash, Katherine Krollicki, Kristina Lutz, Shelley Kraus, Ashley Bernotas, Christa Yeo, Neala Hoad, Tammy French, Diane Heels-Ansdell, Lisa Buckingham, Aravin Duraikannan, Norma Brown, Chris Cotoi, Luqi Wang, Sandeep Bhandari, Laurel Grainger, Deborah Maddock, Pat Smith, Shawn Billington, Maureen Meade, Gordon Guyatt, Stephen Walter, Linda Oronato and Deborah Cook, McMaster University and St Joseph's Healthcare, Hamilton, Ontario, Canada
 - PROTECT Steering Committee
 - Deborah Cook (Principal Investigator), Mark Crowther, Maureen Meade, Gordon Guyatt, William Geerts, D Jamie Cooper, Ismael Qushmaq, Marcelo Rocha, Otavio Berwanger, Theodore E Warkentin, Nicole Zytaruk (Project Manager, Global), Shirley Vallance (Project Manager, Australia), Diane Heels-Ansdell and Stephen Walter (Biostatisticians)
 - Data Monitoring Committee
 - Drs Robin Roberts (Chair), Christian Brun-Buisson and Victor Montori
- Author details**
- ¹Department of Medicine, McMaster University Health Sciences Center, Hamilton, ON L8N 3Z5, Canada. ²Department of Clinical Epidemiology and Biostatistics, McMaster University Health Sciences Center, Hamilton, ON L8N 3Z5, Canada. ³Interdepartmental Division of Critical Care, University of Toronto, Toronto, ON, Canada. ⁴Department of Critical Care, Ottawa University, Ottawa, ON, Canada. ⁵Intensive Care Unit, The Alfred, Melbourne, VIC, Australia. ⁶The George Institute for Global Health, University of Sydney, Sydney, NSW, Australia. ⁷Intensive Care Unit, Monash Medical Centre, Melbourne, VIC, Australia. ⁸Intensive Care Department, King Saud Bin Abdulaziz University for Health Sciences, Riyadh, Saudi Arabia. ⁹Intensive Care Unit, Royal Prince Alfred Hospital, Sydney, NSW, Australia. ¹⁰Intensive Care Unit, Barwon Health, Geelong, VIC, Australia. ¹¹Departments of Anesthesiology, Medicine, Surgery and Pharmacology, Dalhousie University, Halifax, NS, Canada. ¹²Intensive Care Unit, Hopital Laval, Quebec, QC, Canada.
- Received: 8 August 2012 Revised: 26 October 2012**
Accepted: 21 December 2012 Published: 8 January 2013
- References**
1. Randolph AG: **The unique challenges of enrolling patients into multiple clinical trials.** *Crit Care Med* 2009, **37**:S107-S111.
 2. Abdool Karim Q, Kharsany AB, Naidoo K, Yende N, Gengiah T, Omar Z, Arulappan N, Mlisana KP, Luthuli LR, Abdool Karim SS: **Co-enrollment in multiple HIV prevention trials - experiences from the CAPRISA 004 Tenofvir gel trial.** *Contemp Clin Trials* 2011, **32**:333-338.
 3. Larntz K, Neaton JD, Wentworth DN, Yurik T: **Data analysis issues for protocols with overlapping enrolment.** *Stat Med* 1996, **15**:2445-2453.

4. Nicole G, Powell JL, Emerson DS: **On coenrollment in clinical resuscitation studies: review and experience from randomized trials.** *Resuscitation* 2010, **81**:792-795.
5. Cook DJ, Blythe D, Rischbieth A, Hebert PC, Zytaruk N, Menon K, Erikson S, Fowler R, Heels-Ansdell D, Meade MO, The Canadian Critical Care Trials Group: **Enrolment of ICU patients into clinical studies: a tri-national survey.** *Crit Care Med* 2008, **37**:51-56.
6. Morley CJ, Lau R, Davis PG, Morse C: **What do parents think about enrolling their premature babies in several research studies?** *Arch Dis Child Fetal Neonate Ed* 2005, **90**:225-228.
7. Angus DC, Mira JP, Vincent JL: **Improving trials in the critically ill.** *Crit Care Med* 2010, **38**:527-532.
8. Cook DJ, Meade M, Guyatt G, Walter SD, Heels-Ansdell D, Geerts W, Warkentin T, Cooper DJ, Zytaruk N, Vallance S, Berwanger O, Rocha M, Qushmaq I, Crowther MA, The PROTECT Investigators, the Canadian Critical Care Trials Group and the Australian and New Zealand Intensive Care Society Clinical Trials Group: **PROphylaxis for ThromboEmbolism in Critical Care Trial protocol and analysis plan.** *J Crit Care* 2011, **26**:223, e1-9.
9. PROTECT Investigators for the Canadian Critical Care Trials Group and the Australian and New Zealand Intensive Care Society Clinical Trials Group, Cook DJ, Meade M, Guyatt G, Walter SD, Heels-Ansdell D, Warkentin Zytaruk NT, Crowther MA, Geerts W, Cooper DJ, Vallance S, Qushmaq I, Rocha M, Berwanger O, Vlahakis N: **Dalteparin versus unfractionated heparin in critically ill patients.** *N Engl J Med* 2011, **364**:1305-1314.
10. Canadian Critical Care Trials Group: [<http://www.ccctg.ca>].
11. Lacroix J, Hebert P, Fergusson D, Tinmouth A, Blajchman MA, Callum J, Cook DJ, Marshall J, McIntyre L, Turgeon A, ABLE Study Group: **The Age of Blood Evaluation (ABLE) randomization controlled trial: study design.** *Transfus Med Rev* 2011, **25**:197-205.
12. Spinella PC, Carroll CL, Staff I, Gross R, McQuay J, Keibel L, Wade CE, Holcomb JB: **Duration of red blood cell storage is associated with increased incidence of deep vein thrombosis and in hospital mortality in patients with traumatic injuries.** *Crit Care* 2009, **13**:R151.
13. Cook DJ, Crowther M, Meade M, Rabbat C, Griffith L, Schiff D, Geerts W, Guyatt GH: **Deep venous thrombosis in medical-surgical critically ill patients: prevalence, incidence and risk factors.** *Crit Care Med* 2005, **33**:1565-1571.
14. Geerts WH, Code K, Jay R, Chen E, Szalai JP: **A prospective study of venous thromboembolism after major trauma.** *N Engl J Med* 1994, **331**:1601-1606.
15. Katsios C, Griffith L, Spinella P, Lacroix J, Crowther M, Hebert P, Meade M, Geerts W, Rabbat C, Cook D: **Red blood cell transfusion and increased length of storage are not associated with deep vein thrombosis in medical-surgical critically ill patients: a prospective observational cohort study.** *Crit Care* 2011, **15**:R263.
16. McCann SK, Campbell MK, Entwistle VA: **Reasons for participating in randomized controlled trials: conditional altruism and considerations for self.** *Trials* 2010, **11**:31-41.
17. Van Spall HGC, Toren A, Kiss A, Fowler RA: **Eligibility criteria of randomized controlled trials published in high impact general medical journals.** *JAMA* 2007, **297**:1233-1240.
18. Finfer S, Ranieri VM, Thompson BT, Barie PS, Dhainaut JF, Douglas IS, Gårdlund B, Marshall JC, Rhodes A: **Design, conduct, analysis and reporting of a multi-national placebo-controlled trial of activated protein C for persistent septic shock.** *Intensive Care Med* 2008, **34**:1935-1947.
19. Luce J, Cook DJ, Martin TR, Angus DC, Boushey HA, Curtis JR, Heffner JE, Lanken PH, Levy MM, Polite PY, Rocker GM, Truog R, American Thoracic Society: **The ethical conduct of clinical research involving critically ill patients in the United States and Canada: principles and recommendations.** *Am J Resp Crit Care Med* 2004, **170**:1375-1384.
20. Curley MA: **Respiratory research in the critically ill pediatric patient: why is it so difficult?** *Respir Care* 2011, **56**:1247-1254, discussion 1254-1257.
21. Cook DJ, Burns K, Finfer S, Kisooson N, Bhagwanjee S, Annane D, Sprung C, Fowler R, Latronico N, Marshall J: **Clinical research ethics for critically ill patients: a pandemic proposal.** *Crit Care Med* 2010, **38**:e138-142.
22. McDonald E, Lutz K, Tkaczyk A, Tessmer C, Clarke F, MacLennan M, Cook DJ: **Enrolment, co-enrolment and non-enrolment in ICU research.** *Crit Care Med* 2007, **35**:184A.

doi:10.1186/cc11917

Cite this article as: Cook et al.: Co-enrollment of critically ill patients into multiple studies: patterns, predictors and consequences. *Critical Care* 2013 **17**:R1.

Submit your next manuscript to BioMed Central and take full advantage of:

- Convenient online submission
- Thorough peer review
- No space constraints or color figure charges
- Immediate publication on acceptance
- Inclusion in PubMed, CAS, Scopus and Google Scholar
- Research which is freely available for redistribution

Submit your manuscript at
www.biomedcentral.com/submit

