



OPEN

The effect of autistic traits on disembedding and mental rotation in neurotypical women and men

Massimiliano Conson¹, Vincenzo Paolo Senese¹, Isa Zappullo^{1,2}, Chiara Baiano^{1,2}, Varun Warriar³, The LabNPEE Group*, Simona Raimo¹, Barbara Rauso¹, Sara Salzano^{2,4} & Simon Baron-Cohen³✉

Recent data has revealed dissociations between social and non-social skills in both autistic and neurotypical populations. In the present study, we investigated whether specific visuospatial abilities, such as figure disembedding and mental rotation, are differently related to social and non-social autistic traits, in neurotypical women and men. University students (N = 426) completed the Autism Spectrum Quotient (AQ), figure disembedding and mental rotation of two-dimensional figures tasks. AQ social skills (AQ-social) and attention-to-details (AQ-attention) subscales were used as measures of social and non-social autistic traits, respectively. Mental rotation was affected by a significant interaction between sex, social and non-social traits. When non-social traits were above the mean (+1 SD), no sex differences in mental rotation were found. Instead, below this value, sex differences depended on the social traits, with men on average outperforming women at middle-to-high social traits, and with a comparable performance, and with women on average outperforming men, at lower social traits. A small positive correlation between figure disembedding and social traits was observed in the overall sample. These results are interpreted in terms of the hyper-systemizing theory of autism and contribute to the evidence of individual differences in the cognitive style of autistic people and neurotypical people with autistic traits.

The issue of whether visuospatial abilities are superior in autistic people compared to neurotypical people has been debated for several decades^{1–3} and continues to attract the attention of researchers^{4,5}. Among the visuospatial tasks most expected to reveal differences between autistic and neurotypical people are figure disembedding and mental rotation, although there are conflicting results due to methodological differences across the studies⁶. Such discrepancies also appear when investigating the cognitive profile of neurotypical individuals in relation to their number of autistic traits.

Autistic traits exist across the general population, with autism at the extreme end of a quantitative distribution^{7,8}. Neurotypical adults with high levels of autistic traits on average show superior performance compared to people with low levels of autistic traits on figure disembedding tasks, analogous to what has been found in autistic people^{9–11}. Larger inconsistencies are seen on mental rotation^{12–15}. Some studies have found that different cognitive abilities and autistic traits predict mental rotation performance in women and men¹⁴. The interaction between autistic traits and sex could lead to differences both in performance¹² and the strategy used to solve mental rotation tasks¹⁵. Other studies have found that an interaction between autistic traits and the academic degree subject could account for differences in mental rotation in men and women¹³.

Together, these results converge in highlighting the need to test the relationship between autistic traits and mental rotation taking into account sex differences. Sex differences in mental rotation have been investigated for a long time, with some authors reporting better abilities on average in men than women, although the size of the difference varies across studies^{16–20}, while other authors reporting no difference at all^{13,21,22}. Analogously, some

¹Department of Psychology, University of Campania Luigi Vanvitelli, Caserta, Italy. ²Studies of Integrated Neuropsychological Therapy, Salerno, Italy. ³Autism Research Centre, Department of Psychiatry, University of Cambridge, Douglas House, 18B Trumpington Road, Cambridge CB2 8AH, UK. ⁴Cognitive-Behavioral School of Psychotherapy "Serapide SPEE", Naples, Italy. *A list of authors and their affiliations appears at the end of the paper. ✉email: sb205@cam.ac.uk

discrepancies in the literature on sex differences in figure disembedding are present but are partially accounted for by age. Indeed, in children, significant sex differences do not emerge so clearly^{23,24} or a non-significant advantage of boys over girls has been observed^{25,26}, while in adults the lack of significant sex differences seems more consistent^{27–29}.

Growing data are revealing dissociations between social and non-social domains in autism and neurotypical people^{8,30–33}, strengthening the view that a continuity exists between autism and autistic traits in the general population^{7,34,35}. In a study exploring whether social or non-social autistic traits relate to figure disembedding ability, Russell-Smith et al.¹¹ used the Autism Spectrum Quotient (AQ⁷) and applied a two-factor model of the measure to differentiate social traits (“social difficulties”) and non-social traits (“details/patterns”)³⁶. Results showed that superior performance in figure disembedding was related to greater social traits. Consistently, DiCriscio and Troiani³⁷ showed that performance on a figure disembedding task positively correlated with autistic-like social features, as assessed by the Broader Autism Phenotype Questionnaire³⁸, although this result was observed in men but not in women. Since figure disembedding implies ignoring the gestalt and focusing on local details, these findings provide support for the view that heightened focus on details, together with weak gestalt processing (weak central coherence), could prevent a person from integrating the social cues that construct meaning in a context³⁹.

Until now, the distinction between social and non-social traits has not been considered in studies investigating the influence of autistic traits on mental rotation. It is worth noting that better mental rotation abilities have been related to high systemizing^{12–14}. Systemizing, defined as the drive to analyse, understand and build systems, a strength in autistic individuals (hyper-systemizing⁴⁰), is one of the non-social aspects of autism³¹. Mental rotation, requiring the person to deal with the visual stimulus as a variable that can be transformed (rotated) to predict how it will appear, has been considered a measure of systemizing^{17,41}. Indeed, systemizing has been operationalised as ‘if-and-then’ logical reasoning⁴² and mental rotation nicely illustrates this: ‘If I take a vertical shape, and I rotate it 90 degrees anti-clockwise, then it will appear horizontal’.

Hence, available data allow us to envisage the possibility that figure disembedding and mental rotation abilities are differently related to social and non-social autistic traits, with figure disembedding most relating to social traits and mental rotation to non-social traits, and with these relationships being moderated by sex. In the present study, we aimed to test this hypothesis on a sample of Italian university students by assessing figure disembedding abilities and mental rotation through well-validated paper-and-pencil tasks^{43,44} and autistic traits as measured by the AQ^{7,45}.

Different factor analyses of the AQ identified from two to five factors, almost all comprising a social-interaction factor and an attention-to-detail factor, although psychometric evaluations of the AQ have led to disagreement as to how these factors are defined⁴⁶. Palmer et al.⁴⁷ performed a cluster analysis on a large data set of general-population adults and identified two subgroups with different trait profiles: one group with greater social difficulties and lower detail orientation, and the other group with lesser social difficulties and greater detail orientation. Moreover, the authors extracted a three-factor structure from AQ, with sociability and mentalising factors sharing moderate-to-strong positive correlations with the AQ’s social skills, imagination, communication and attention switching subscales, but correlating negatively with the attention-to-detail subscale. In contrast, the detail orientation factor showed a strong positive correlation with the AQ’s attention-to-detail subscale and very weak correlations with social skill, attention switching, communication, and imagination subscales. Hence, Palmer et al.’s⁴⁷ results suggest considering social and attention-to-detail trait domains independently, a perspective also shared by other authors^{48,49}. More recently, English et al.⁴⁶ performed confirmatory factor analyses across competing factor models of the AQ and results supported Russell-Smith et al.’s³⁶ model differentiating three factors: social skill; details and patterns; communication and mindreading.

Due to the complexity in identifying the most psychometrically sound factor structure of the AQ, here we used Baron-Cohen et al.’s⁷ AQ social skills (AQ-social) and attention-to-details (AQ-attention) subscales as separate variables representing the two core clusters of respectively social and non-social autistic traits and with respect to which the validity has been verified for the Italian version of the scale⁴⁵.

Methods

Participants. Participants were 426 Italian native speaker students (206 women, 220 men: mean age = 23.75 years, SD = 2.04) enrolled from different Universities in the Campania region (Southern Italy). All participants were recruited from systemizing-based degree subjects, as computer science, engineering, mathematics, chemistry, physics, biology, law, economics, languages and philosophy (for a detailed description of the degree subjects see Ref.¹³).

Individuals could participate in the study if they did not report any past or current history of neurological or psychiatric conditions. Individuals with a diagnosis of neurodevelopmental disorder or reporting past or current use of substances acting on the central nervous system were also excluded from the study.

The study was approved by the Ethic Committee of the Department of Psychology of the University of Campania Luigi Vanvitelli and was conducted in accordance with the ethical standards of Helsinki Declaration; written informed consent was obtained from all participants prior to testing.

Materials underpinning the research, and the datasets generated and analysed during the current study are available from the corresponding author (S.B.C.) on request.

Measures. *Autistic traits.* Autistic traits were assessed via the Italian version of the Autism Spectrum Quotient (AQ⁴⁵). The AQ measures, both in clinical and non-clinical samples, the individual’s autistic traits in five domains: social skill; attention switching; attention-to-detail; communication; imagination. All the participants completed the full 50-item AQ, and the results were scored according to Baron-Cohen et al.’s⁷ criteria. For the

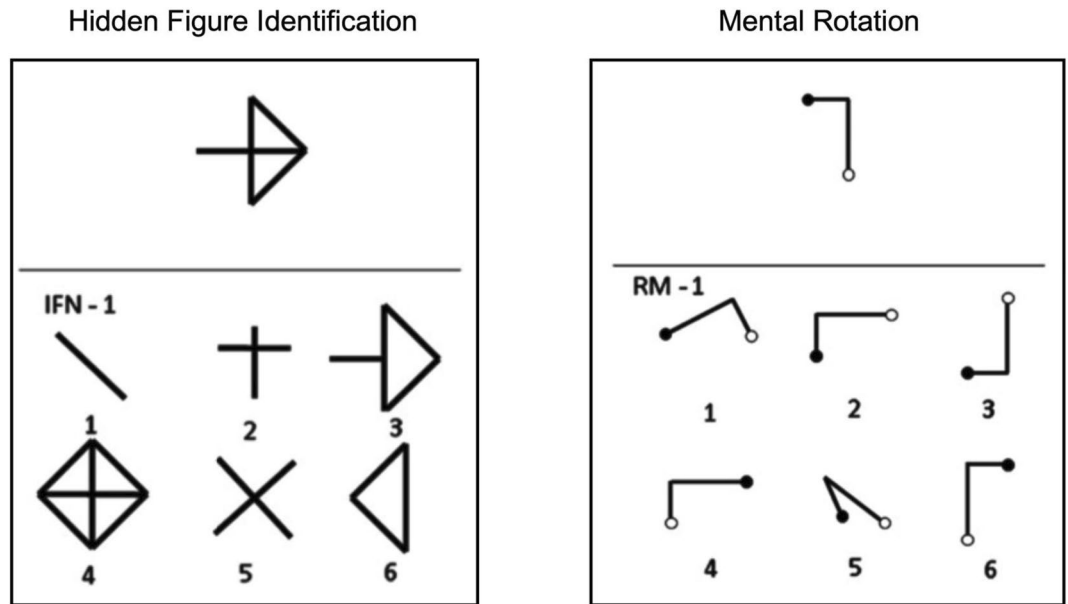


Figure 1. Examples of items from Hidden Figure Identification and Mental Rotation tasks. In the Hidden Figure Identification task, participants have to identify among the options a simple shape which is contained within the target stimulus (here, the correct response is the option 3). In the Mental Rotation task, participants are required to identify among the options the one matching the target stimulus after a mental rotation on the horizontal plane (here, the correct response is the option 2).

present study, total AQ score and five scores for the main subscales (higher scores always implies stronger autistic traits) were obtained and used to test sex differences. However, as underscored above, to pursue the main aim of the study, we used Baron-Cohen et al.'s⁷ AQ social skills (AQ-social) and attention-to-details (AQ-attention) subscales as variables representing social and non-social autistic traits, respectively.

Visuospatial abilities. Figure disembedding and mental rotation were evaluated by two paper-and-pencil tests derived from a well-validated battery developed for assessing visuospatial abilities^{43,44}. Both tasks consist of a series of items, each presented on a paper sheet. For each item, the target stimulus is placed in the upper part of the sheet while the options are placed within a six-choice display in the lower part of the sheet (Fig. 1). Items are presented one at a time and participants are required to indicate among the six options the only one corresponding to the stimulus target, without time constraints. To give their answer, the participants have to verbally report the number corresponding to the selected option. Two practice items are given before the task in order to be sure that the participant clearly understands the instructions.

Both correct responses and the total time needed to solve all the items are recorded. Scoring procedures assign one point for each correct response; no penalty is computed for wrong responses. Following previous studies^{43,44} showing that for both figure disembedding and mental rotation tasks the accuracy parameter provides a reliable (person separation indices > 0.81) and valid measure of the two visuospatial abilities, here statistical analysis took into account only response accuracy.

All participants were assessed individually in a dedicated room, away from sources of noise or other distractions.

Figure disembedding. In the Hidden Figure Identification task^{43,44} participants are presented with a target stimulus and six figures (i.e., the correct response and five distractors) consisting of complex geometrical shapes. The task requires participants to identify among the options the one representing a simple shape which is contained within the target stimulus. There are 12 items of increasing complexity (score range 0–12).

Mental rotation. In the mental rotation task^{43,44}, participants are presented with a target stimulus shaped as the capital letter L or S, with small white or black circles at the extremities. A six-choice display includes the image corresponding to the target stimulus, rotated on the horizontal plane by 45°, 90°, 135°, or 180°, and five distractors at different degrees of rotation. The task requires participants to indicate the option matching the target stimulus after a mental rotation on the horizontal plane. There are 9 items of increasing complexity (score range 0–9).

Statistical analysis. First, we tested differences between women and men on the two visuospatial tasks and on AQ subscales by performing a MANOVA with sex as a between-subject factor.

To assess the degree of association between social and non-social traits and the two visuospatial abilities, Pearson correlation coefficients were computed between variables.

	Women		Men	
	Mean	SD	Mean	SD
Visuospatial tasks				
Figure disembedding	9.9	2.1	10.1	2.2
Mental rotation	6.4	2.3	6.7	2.1
AQ				
Total	17.6	5.7	18.1	5.6
Social skill (AQ-social)	2.2	2.2	2.1	1.8
Attention switching**	4.4	1.9	4.8	1.8
Communication	2.4	1.9	2.5	1.7
Imagination***	2.7	1.6	3.3	1.7
Attention-to-detail (AQ-attention)*	5.9	2.4	5.5	2.5

Table 1. Scores (mean and SD) on visuospatial tasks and AQ, separately for women and men. $N = 206$ women, 220 men; * $p = 0.044$; ** $p = 0.029$; *** $p = 0.0001$.

Variables	1	2	3
1. AQ-social	–		
2. AQ-attention	0.042	–	
3. Mental rotation	0.075	0.026	–
4. Figure disembedding	0.108*	0.037	0.431***

Table 2. Correlations among social traits, non-social traits, mental rotation and figure disembedding performance. * $p < 0.05$. *** $p < 0.001$.

To investigate if figure disembedding and mental rotation abilities dissociate with respect to social and non-social autistic traits and if the effect is moderated by the sex, two hierarchical multiple regressions were carried out.

In each regression, figure disembedding or mental rotation was regressed on age (as control variable), sex and the two types of autistic traits. In both regression models, all variables were included as z-scores, while sex was dummy coded (men = 0; women = 1). In the first step, age was included. In the second step, sex, AQ-social and AQ-attention were added. In the third step, the two-way interaction effects were added. In the fourth and final step, the three-way interaction was included.

When significant, the interaction effects were investigated by applying simple slope analysis and the Johnson and Neyman's (JN) approach⁵⁰ to define the lower and upper values of the moderator for which the effect of the predictor on the dependent variable was significant. All the analyses were performed with the psych⁵¹ and the interaction packages implemented into R 3.6.1 software^{52,53}.

Results

Accuracy on the visuospatial tasks and scores on AQ, separately for women and men, as well as significant differences between the two groups, are reported in Table 1.

Correlations. Results of the correlations analysis (Table 2) showed that figure disembedding was strongly associated with mental rotation performance. Moreover, data showed that figure disembedding was significantly associated with the social autistic traits, although the effect size was small. No other significant association ($p > 0.05$) between visuospatial abilities and autistic traits was observed.

Regression models. As regards the figure disembedding task, results of the hierarchical regression analysis did not show significant additive effects across the steps (Table 3).

The regression analysis on the mental rotation task showed that the model including the three-way interaction increased the prediction of the dependent variable significantly, although the effect size was small, $R^2_{diff} = 0.016$; $F(1, 415) = 6.759$, $p = 0.009$ (see Table 3). Parameter analysis of the final model revealed that, independently of the other variables in the model, the effect of AQ-social on mental rotation was moderated by both sex and AQ-attention. In particular, data showed that if non-social traits were below the mean (-1 SD), the effect of social traits on mental rotation was positive for men (higher accuracy), whereas it was negative (lower accuracy) for women (Fig. 2). The JN analysis indicated that, when non-social autistic traits were below the mean (-1 SD), sex differences were significant when the social autistic traits were lower than -1.70 SD from the mean or higher than 0.09 SD from the mean. When non-social traits were on the mean, sex differences in the effect of social traits on mental rotation were similar to what was described above but attenuated. Indeed, the JN analysis indicated that sex differences were significant when social traits were higher than 0.04 SD from the mean. Instead, when

Predictor	Visuospatial ability					
	Mental rotation			Figure disembedding		
	R^2_{diff}	b [95% CI]	β	R^2_{diff}	b [95% CI]	β
Step 1	0.002			0.007		
Age		0.046 [- 0.057; 0.149]	0.042		0.084 [- 0.011; 0.179]	0.084
Step 2	0.013			0.014		
Age		0.036 [- 0.067; 0.139]	0.034		0.079 [- 0.016; 0.175]	0.079
Sex (F = 1)		- 0.375 [- 0.800; 0.049]	- 0.085		- 0.171 [- 0.563; 0.222]	- 0.042
AQ-social		0.167 [- 0.043; 0.378]	0.076		0.219* [0.025; 0.413]	0.107*
AQ-attention		0.069 [- 0.146; 0.286]	0.031		0.073 [- 0.126; 0.273]	0.035
Step 3	0.007			0.012		
Age		0.035 [- 0.068; 0.138]	0.032		0.079 [- 0.017; 0.174]	0.079
Sex		- 0.377 [- 0.802; 0.048]	- 0.086		- 0.167 [- 0.558; 0.225]	- 0.041
AQ-social		0.335* [- 0.033; 0.637]	0.152*		0.388** [0.109; 0.666]	0.190**
AQ-attention		0.021 [- 0.284; 0.326]	0.009		0.013 [- 0.268; 0.294]	0.006
Sex × AQ-social		- 0.355 [- 0.782; - 0.073]	- 0.116		- 0.277 [- 0.672; 0.117]	- 0.097
Sex × AQ-attention		0.104 [- 0.329; 0.537]	0.032		0.123 [- 0.276; 0.522]	0.041
AQ-social × AQ-attention		0.084 [- 0.141; 0.308]	0.037		- 0.147 [- 0.355; 0.060]	- 0.070
Step 4	0.016**			0.006		
Age		0.031 [- 0.071; 0.134]	0.029		0.077 [- 0.019; 0.172]	0.077
Sex		- 0.402 [- 0.824; 0.020]	- 0.091		- 0.182 [- 0.573; 0.210]	- 0.044
AQ-social		0.337* [0.037; 0.637]	0.153*		0.389** [0.112; 0.668]	0.191**
AQ-attention		0.025 [- 0.278; 0.328]	0.011		0.015 [- 0.265; 0.296]	0.007
Sex × AQ-social		- 0.456* [- 0.888; - 0.025]	- 0.149*		- 0.337 [- 0.736; 0.063]	- 0.118
Sex × AQ-attention		0.109 [- 0.321; 0.539]	0.034		0.126 [- 0.272; 0.525]	0.043
AQ-social × AQ-attention		- 0.222 [- 0.544; 0.099]	- 0.098		- 0.326* [- 0.624; - 0.028]	- 0.154*
Sex × AQ-social × AQ-attention		0.591** [0.144; 1.038]	0.192**		0.346 [- 0.068; 0.760]	0.121
Total R ²	0.038*			0.039*		

Table 3. Hierarchical multiple regression analyses predicting visuospatial abilities from age, sex, social and non-social autistic traits, and their interaction. $N = 426$. Age = age of participants in years (z-score); Sex = participants' sex dummy coding (Men = 0; Women = 1); * $p < 0.05$; ** $p < 0.01$; *** $p < 0.001$.

non-social traits were above the mean (+ 1 SD), no sex differences were observed as regards the effect of the social traits on the mental rotation. In other words, the interaction between social and non-social traits regulated sex differences in mental rotation performance.

Discussion

The present study found that social traits differently impact sex differences in mental rotation in people with high, middle, or low non-social traits. More precisely, when non-social traits were above the mean (+ 1 SD), no sex differences in mental rotation were found. In contrast, below this value, sex differences depended on the levels of social traits, with men of middle-to-high social traits on average outperforming women, and with women on average outperforming men with lower social traits.

On figure disembedding task, there was no significant interaction between sex and traits, but only a small positive correlation between disembedding accuracy and AQ-social score. This last finding is consistent with Russell-Smith et al.'s¹¹ data showing that such a relationship, albeit weak, seems independent from sex. However, DiCriscio and Troiani³⁷ found that the positive relationship between figure disembedding ability and social autistic traits was specific for men. Thus, although the present results would support the positive relation between figure disembedding ability and social autistic traits, they do not allow to clarify the role of sex differences and recommend further investigation⁵⁴. Consistently, although the hierarchical multiple regression showed a significant AQ-social × AQ-attention interaction, it was not discussed here to avoid increasing the type I error in interpreting the results given that the delta of the R-square of the step 4 was not significant. Although this choice could correspond to a type II error, a replication of this effect is needed before interpreting it as relevant.

Regarding the involvement of different strategies in mental rotation depending on the interaction between sex and autistic traits, Stevenson and Nonack¹⁵ studied eye fixations during mental rotation in women and men with low, medium, and high autistic traits, as indexed by AQ total score. Their results showed that fixations by the participants in the high autistic traits group varied by sex, while no sex differences were found for medium and low autistic traits. The present data indicate that the extent to which people differ in the degree of social and non-social autistic traits is important in understanding sex differences in mental rotation.

Some authors propose that mental rotation can be accomplished by a global (holistic) or a local (piecemeal) strategy^{55,56}. The holistic strategy seems related to better performance, whereas the piecemeal one to poorer

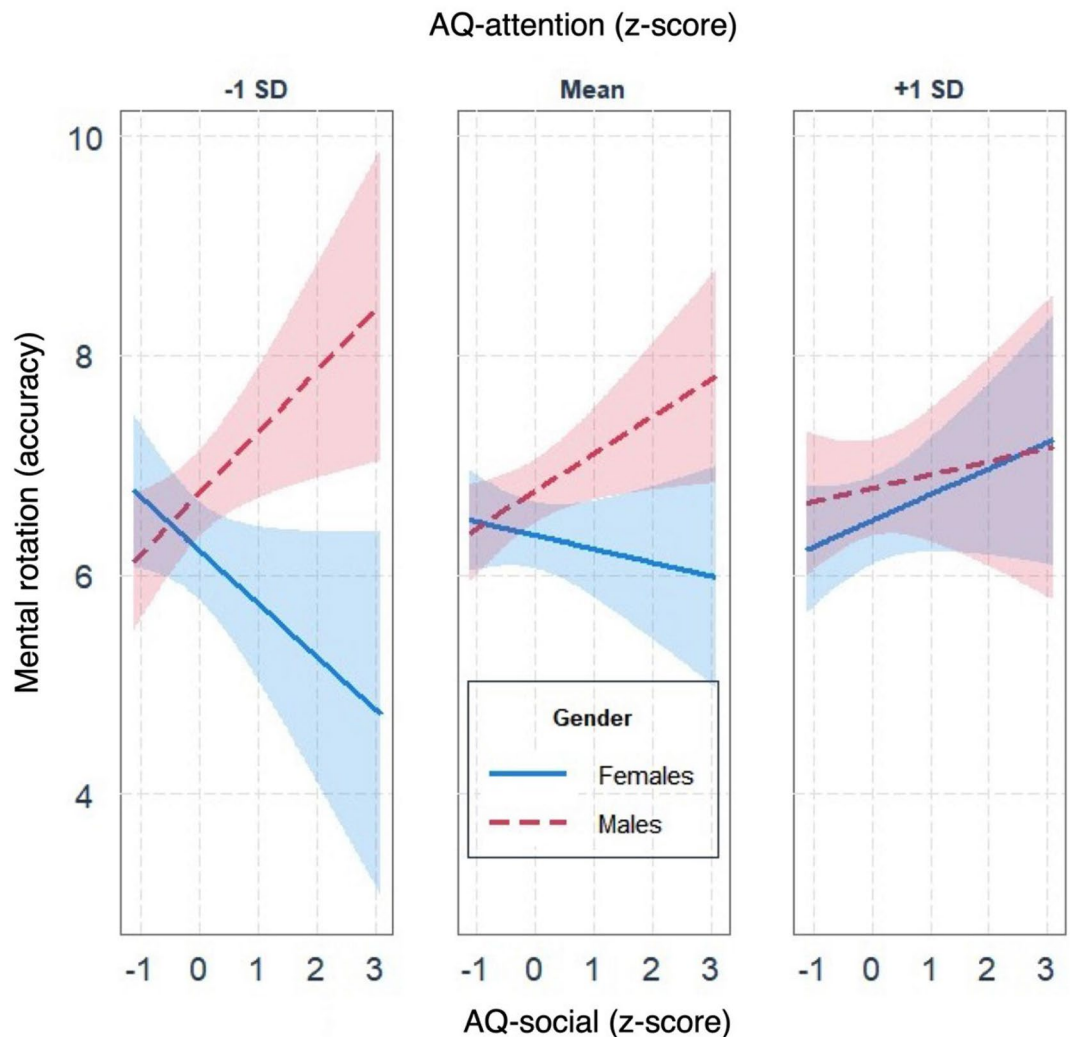


Figure 2. The effect of social traits on mental rotation performance moderated by both sex and non-social traits.

performance⁵⁷. Men on average may use a holistic strategy, whereas women on average may use a piecemeal strategy, although such differences have not been systematically confirmed^{58,59}. Others have suggested that rather than being divided into global vs. local, mental rotation strategies may be best divided based on their efficiency^{60–62}. Across several studies, Just and Carpenter⁶¹ demonstrated that mental rotation can be conceived as a multi-step process in which the result of each step is monitored to determine if the intermediate result is approaching the final output. The authors also suggested that individuals performing better (high spatial individuals) are those who can keep track of the process, while individuals performing worse (low spatial individuals) are less able to keep track of the intermediate products of their partial rotations, so that their accuracy drops, especially at increasing task complexity.

Just and Carpenter's⁶¹ perspective nicely fits the concept of systemizing according to which individuals with high systemizing traits are able to understand a system by identifying the key variables of the system, then manipulating them systematically and checking the effect of such manipulation on the system through 'if-and-then' rules^{41,42}. Thus, solving a problem through systemizing implies, as a first step of the process, detecting the elements of a complex whole (the system), then exploiting them in terms of 'if-and-then' rules, a multi-step process allowing system-understanding and problem solving^{41,42,63}. One could speculate that people with higher systemizing or high non-social autistic traits are more able to apply this multi-step process, thus showing a good performance. In contrast, people with low systemizing or low non-social traits may be less able to implement this process, leading to poorer performance. However, importantly, our results showed that when non-social traits were below the mean there was the strongest sex difference in mental rotation, with women on average being significantly less accurate than men at higher levels of social traits. Therefore, in men the effect of both non-social and social traits on mental rotation performance was positive, while in women the effect of non-social traits was positive and that of social traits was negative.

Dissociable effects of social and non-social traits on cognitive performance in women and men has been previously reported^{37,48}. For instance, Davis et al.⁴⁸ found an association between higher social traits and poorer

face recognition on average in women but not in men, and between higher social traits and less looking at eyes during a face learning task in men but not in women. This is consistent with our results in that both suggest that higher social traits can be related to better or poorer cognitive performance depending on the participant's sex. On this basis, we could conjecture that in men both social and non-social autistic traits favour the activation of an effective multi-step mental rotation strategy, whereas in women an opposite effect of the two types of traits is produced on this strategy. While the mechanism behind this sex difference warrants investigation, the merit of the present study lies in that it revealed a complex interaction between social and non-social traits, sex and mental rotation performance.

There are some limitations that require comment. First, we used visuospatial tasks that, although well-validated, did not provide a reliable and valid measure of the participants' response times. In particular, the present paper-and-pencil mental rotation task did not allow us to directly test specific mental rotation strategies as in studies employing the computerized three-dimensional mental rotation task⁶⁴. If the effective multi-step mental rotation strategy is effortless in individuals with high non-social traits, whereas it is effortful and time consuming in individuals with low non-social traits, one might expect to see the multi-step strategy associated with longer reaction times in people with low compared to high non-social traits. Future studies could test this prediction by using an analogous research protocol as the present one but replacing our paper-and-pencil mental rotation test with computerized versions of the task⁶⁵.

Second, we measured non-social autistic traits with the AQ attention-to-detail subscale and assessed mental rotation that is a proxy to systemizing^{17,41}. Strong systemizing has been conceived a way of explaining all the non-social features of autism, such as narrow interests, repetitive behaviour, resistance to change, and sensory hypersensitivity⁶³. Thus, the relationship we found here between AQ-attention and mental rotation could be extended to other non-social autistic traits. However, this hypothesis needs to be directly verified by specific investigation.

Finally, we used Baron-Cohen et al.'s⁷ model of AQ to measure social and non-social autistic traits since its validity has been verified for the Italian version of the scale⁴⁵. However, we must acknowledge that English et al.'s⁴⁶ results indicated that other AQ models, such as the Russell-Smith et al.'s³⁶ model, may provide more psychometrically sound factor structure of the AQ. In the light of this evidence, the present results should be replicated using other AQ models.

In summary, the present findings support the view that people with high non-social autistic traits show hyper-systemizing, consistent with the talent in autistic people when dealing with systemizing domains^{41,63}. In addition, since neurotypical women, on average, show lower systemizing than men⁴⁰, this might explain why men, on average, tend to outperform women on visuospatial tasks, such as mental rotation^{12,20}. However, although men are generally higher than women in systemizing, not all men are high-systemizers and not all women are low-systemizers^{13,21,41}, and the present findings indicate that when non-social traits are comparably high in women and men, a similar mental rotation performance can be observed.

In conclusion, this study sheds light on the conflicting pattern of results in literature on the influence of autistic traits on mental rotation, paving the way for future investigations of this.

Received: 8 May 2021; Accepted: 15 February 2022

Published online: 17 March 2022

References

- Jolliffe, T. & Baron-Cohen, S. Are people with autism and Asperger syndrome faster than normal on the embedded figures test?. *J. Child Psychol. Psychiatry* **38**, 527–534 (1997).
- Shah, A. & Frith, U. An islet of ability in autistic children: A research note. *J. Child Psychol. Psychiatry* **24**, 613–620 (1983).
- Shah, A. & Frith, U. Why do autistic individuals show superior performance on the Block Design task?. *J. Child Psychol. Psychiatry* **34**, 1351–1364 (1993).
- Edmondson, D. A., Xia, P., McNally Keehn, R., Dydak, U. & Keehn, B. A Magnetic Resonance Spectroscopy study of superior visual search abilities in children with Autism Spectrum Disorder. *Autism Res.* **13**, 550–562 (2020).
- Rohde, M. S., Georgescu, A. L., Vogeley, K., Fimmers, R. & Falter-Wagner, C. M. Absence of sex differences in mental rotation performance in autism spectrum disorder. *Autism* **22**, 855–865 (2018).
- Muth, A., Hönekopp, J. & Falter, C. M. Visuo-spatial performance in autism: a meta-analysis. *J. Autism Dev. Disord.* **44**, 3245–3363 (2014).
- Baron-Cohen, S., Wheelwright, S., Skinner, R., Martin, J. & Clubley, E. The Autism-Spectrum Quotient (AQ): Evidence from Asperger syndrome/high-functioning autism, males and females, scientists and mathematicians. *J. Autism Dev. Disord.* **31**, 5–17 (2001).
- Grove, R., Baillie, A., Allison, C., Baron-Cohen, S. & Hoekstra, R. A. Empathizing, systemizing, and autistic traits: Latent structure in individuals with autism, their parents, and general population controls. *J. Abnorm. Psychol.* **122**, 600–609 (2013).
- Cribb, S. J., Olaithé, M., Di Lorenzo, R., Dunlop, P. D. & Maybery, M. T. Embedded figures test performance in the broader autism phenotype: A meta-analysis. *J. Autism Dev. Disord.* **46**, 2924–2939 (2016).
- Grinter, E. J., Van Beek, P. L., Maybery, M. T. & Badcock, D. R. Brief report: Visuospatial analysis and self-rated autistic-like traits. *J. Autism Dev. Disord.* **39**, 670–677 (2009).
- Russell-Smith, S. N., Maybery, M. T., Bayliss, D. M. & Sng, A. A. Support for a link between the local processing bias and social deficits in autism: An investigation of embedded figures test performance in non-clinical individuals. *J. Autism Dev. Disord.* **42**, 2420–2430 (2012).
- Brosnan, M., Daggan, R. & Collomosse, J. The relationship between systemising and mental rotation and the implications for the extreme male brain theory of autism. *J. Autism Dev. Disord.* **40**, 1–7 (2010).
- Conson, M. et al. The effects of autistic traits and academic degree on visuospatial abilities. *Cognit. Process.* **21**, 127–140 (2020).
- Cook, C. M. & Saucier, D. M. Mental rotation, targeting ability and Baron-Cohen's Empathizing-Systemizing theory of sex differences. *Pers. Individ. Differ.* **49**, 712–716 (2010).
- Stevenson, J. L. & Nonack, M. B. Gender differences in mental rotation strategy depend on degree of autistic traits. *Autism Res.* **11**, 1024–1037 (2018).
- Auyeung, B. et al. Effects of fetal testosterone on visuospatial ability. *Arch. Sex. Behav.* **41**, 571–581 (2012).

17. Collins, D. W. & Kimura, D. A large sex difference on a two-dimensional mental rotation task. *Behav. Neurosci.* **111**, 845–849 (1997).
18. Linn, M. C. & Petersen, A. C. Emergence and characterization of sex differences in spatial ability: A meta-analysis. *Child Dev.* **56**, 1479–1498 (1985).
19. Maeda, Y. & Yoon, S. Y. A meta-analysis on gender differences in mental rotation ability measured by the Purdue Spatial Visualization Tests: Visualization of Rotations (PSVT:R). *Educ. Psychol. Rev.* **25**, 69–94 (2013).
20. Voyer, D., Voyer, S. & Bryden, M. Magnitude of sex differences in spatial abilities: A meta-analysis and consideration of critical variables. *Psychol. Bull.* **117**, 250–270 (1995).
21. Groen, Y., Fuermaier, A. B. M., Tucha, L., Koerts, J. & Tucha, O. How predictive are sex and empathizing-systemizing cognitive style for entry into the academic areas of social or physical sciences?. *Cognit. Process.* **19**, 95–106 (2018).
22. Rodán, A., Contreras, M. J., Elosúa, M. R. & Gimeno, P. Experimental but not sex differences of a mental rotation training program on adolescents. *Front. Psychol.* **7**, 1050. <https://doi.org/10.3389/fpsyg.2016.01050> (2016).
23. Bigelow, G. S. Field dependence-field independence in 5- to 10-year-old children. *J. Educ. Res.* **64**, 397–400. <https://doi.org/10.1080/00220671.1971.10884202> (1971).
24. Cecchini, M. & Pizzamiglio, L. Effects of field-dependency, social class and sex of children between ages 5 and 10. *Percept. Mot. Skills* **41**, 155–164. <https://doi.org/10.2466/pms.1975.41.1.155> (1975).
25. Amador-Campos, J. A. & Kirchner-Nebot, T. Relations of scores on Children's Embedded Figures Test with age, item difficulty and internal consistency. *Percept. Mot. Skills* **85**, 675–682. <https://doi.org/10.2466/pms.1997.85.2.675> (1997).
26. Auyeung, B. *et al.* Effects of fetal testosterone on visuospatial ability. *Arch. Sex Behav.* **41**, 571–581. <https://doi.org/10.1007/s10508-011-9864-8> (2012).
27. Cummings, A. L. & Murray, H. G. Psychometric data on the group embedded figures test for a sample of adult learners. *Percept. Mot. Skills* **65**, 583–586. <https://doi.org/10.2466/pms.1987.65.2.583> (1987).
28. De Sanctis, G. & Duniloski, R. Group Embedded Figures Test: Psychometric data for a sample of business students. *Percept. Mot. Skills* **56**, 707–710 (1983).
29. Di Nuovo, S. Administration times for Witkin's Group Embedded Figures Test. *Percept. Mot. Skills* **58**, 134 (1984).
30. Dworzynski, K., Happé, F., Bolton, P. & Ronald, A. Relationship between symptom domains in autism spectrum disorders: A population based twin study. *J. Autism Dev. Disord.* **39**, 1197–1210 (2009).
31. Warrier, V. *et al.* Social and non-social autism symptoms and trait domains are genetically dissociable. *Commun. Biol.* **2**, 328. <https://doi.org/10.1038/s42003-019-0558-4> (2019).
32. Greenberg, D. M., Warrier, V., Allison, C. & Baron-Cohen, S. Testing the empathizing-systemizing theory of sex differences and the extreme male brain theory of autism in half a million people. *Proc. Natl. Acad. Sci. U.S.A.* **115**, 12152–12157 (2018).
33. Palmer, C. J., Paton, B., Enticott, P. G. & Hohwy, J. 'Subtypes' in the presentation of autistic traits in the general adult population. *J. Autism Dev. Disord.* **45**, 1291–1301 (2015).
34. Constantino, J. N. & Todd, R. N. Autistic traits in the general population. *Arch. Gen. Psychiatry* **60**, 524–530 (2003).
35. Robinson, E. B. *et al.* Stability of autistic traits in the general population: Further evidence for a continuum of impairment. *J. Am. Acad. Child Adolesc. Psychiatry* **50**, 376–384 (2011).
36. Russell-Smith, S., Maybery, M. & Bayliss, D. Relationships between autistic-like and schizotypy traits: An analysis using the Autism Spectrum Quotient and Oxford-Liverpool inventory of feelings and experiences. *Pers. Individ. Differ.* **51**, 128–132 (2011).
37. DiCriscio, A. S. & Troiani, V. Brief report: Autism-like traits are associated with enhanced ability to disembed visual forms. *J. Autism Dev. Disord.* **47**, 1568–1576. <https://doi.org/10.1007/s10803-017-3053-0> (2017).
38. Hurley, R. S. E., Losh, M., Parlier, M., Reznick, J. S. & Piven, J. The broad autism phenotype questionnaire. *J. Autism Dev. Disord.* **37**, 1679–1690. <https://doi.org/10.1007/s10803-006-0299-3> (2007).
39. Frith, U. & Happé, F. Autism: Beyond "theory of mind". *Cognition* **50**, 115–132 (1994).
40. Baron-Cohen, S., Richler, J., Bisarya, D., Guranathan, N. & Wheelwright, S. The systemising quotient (SQ): An investigation of adults with Asperger syndrome or high functioning autism and normal sex differences. *Philos. Trans. R. Soc. Lond. B Biol. Sci.* **358**, 361–374 (2003).
41. Baron-Cohen, S. The extreme male brain theory of autism. *Trends Cogn. Sci.* **6**, 248–254 (2002).
42. Baron-Cohen, S. *The Pattern Seekers: How Autism Drives Human Invention* (Basic Books, 2021).
43. La Femina, F., Senese, V. P., Grossi, D. & Venuti, P. A battery for the assessment of visuo-spatial abilities involved in drawing tasks. *Clin. Neuropsychol.* **23**, 691–714 (2009).
44. Trojano, L., Siciliano, M., Pedone, R., Cristinzio, C. & Grossi, D. Italian normative data for the battery for visuospatial abilities (TERADIC). *Neurol. Sci.* **36**, 1353–1361 (2015).
45. Ruta, L., Mazzone, D., Mazzone, L., Wheelwright, S. & Baron-Cohen, S. The Autism-Spectrum Quotient-Italian version: A cross-cultural confirmation of the broader autism phenotype. *J. Autism Dev. Disord.* **42**, 625–633 (2012).
46. English, M. C. W., Gignac, G. E., Visser, T. A. W., Whitehouse, A. J. O. & Maybery, M. T. A comprehensive psychometric analysis of autism-spectrum quotient factor models using two large samples: Model recommendations and the influence of divergent traits on total-scale scores. *Autism Res.* **13**, 45–60. <https://doi.org/10.1002/aur.2198> (2020).
47. Palmer, C. J., Paton, B., Enticott, P. G. & Hohwy, J. "Subtypes" in the presentation of autistic traits in the general adult population. *J. Autism Dev. Disord.* **45**, 1291–1301. <https://doi.org/10.1007/s10803-014-2289-1> (2015).
48. Davis, J. *et al.* Social and attention-to-detail subclusters of autistic traits differentially predict looking at eyes and face identity recognition ability. *Br. J. Psychol.* **108**, 191–219. <https://doi.org/10.1111/bjop.12188> (2017).
49. Kitazoe, N., Fujita, N., Izumoto, Y., Terada, S. I. & Hatakenaka, Y. Whether the Autism Spectrum Quotient consists of two different subgroups? Cluster analysis of the Autism Spectrum Quotient in general population. *Autism* **21**, 323–332 (2017).
50. Johnson, P. O. & Neyman, J. Tests of certain linear hypotheses and their applications to some educational problems. *Stat. Res. Mem.* **1**, 57–39 (1936).
51. Revelle, W. psych: Procedures for Psychological, Psychometric, and Personality Research. Evanston, Illinois. R package version 1.8.12 (2017).
52. Long, J. A. Interactions: Comprehensive, User-Friendly Toolkit for Probing Interactions. R package version 1.1.0. Accessed 27 June 2021. <https://cran.r-project.org/package=interactions> (2019).
53. R Core Team. R: A language and environment for statistical computing. R Foundation for Statistical Computing, Vienna, Austria. Accessed 27 June 2021. <https://www.R-project.org/> (2019).
54. Kimchi, R., Amishav, R. & Sulitzeanu-Kenan, A. Gender differences in global-local perception? Evidence from orientation and shape judgments. *Acta Psychol.* **130**, 64–71 (2009).
55. Cooper, L. A. Individual differences in visual comparison processes. *Percept. Psychophys.* **19**, 433–444 (1976).
56. Corballis, M. C. Mental rotation and the right hemisphere. *Brain Lang.* **57**, 100–121 (1997).
57. Fitzhugh, S., Shipley, T. F., Newcombe, N., McKenna, K. & Dumay, D. Mental rotation of real word Shepard-Metzler figures: An eye tracking study. *J. Vis.* **8**, 648 (2008).
58. Heil, M. & Jansen-Osmann, P. Sex differences in mental rotation with polygons of different complexity: do men utilize holistic processes whereas women prefer piecemeal ones?. *Q. J. Exp. Psychol.* **61**, 683–689 (2008).
59. Jansen-Osmann, P. & Heil, M. Suitable stimuli to obtain (no) gender differences in the speed of cognitive processes involved in mental rotation. *Brain Cogn.* **64**, 217–227 (2007).

60. Eme, P. E. & Marquer, J. Quantitative and qualitative individual differences in visual comparison processing: Are strategies only analytic or holistic?. *Pers. Individ. Differ.* **25**, 459–475 (1998).
61. Just, M. A. & Carpenter, P. A. Cognitive coordinate systems: Accounts of mental rotation and individual differences in spatial ability. *Psychol. Rev.* **92**, 137–172 (1985).
62. Khooshabeh, P., Hegarty, M. & Shipley, T. F. Individual differences in mental rotation: Piecemeal versus holistic processing. *Exp. Psychol.* **60**, 164–171 (2013).
63. Baron-Cohen, S., Ashwin, E., Ashwin, C., Tavassoli, T. & Chakrabarti, B. Talent in autism: Hyper-systemizing, hyper-attention to detail and sensory hypersensitivity. *Philos. Trans. R. Soc. Lond. B Biol. Sci.* **364**, 1377–1383 (2009).
64. Zapf, A. C., Glindemann, L. A., Vogeley, K. & Falter, C. M. Sex differences in mental rotation and how they add to the understanding of autism. *PLoS One* **10**, e0124628. <https://doi.org/10.1371/journal.pone.0124628> (2015).
65. Shepard, R. N. & Metzler, J. Mental rotation of three-dimensional objects. *Science* **171**, 701–703 (1971).

Acknowledgements

SBC received funding from the Wellcome Trust 214322\Z\18\Z. For the purpose of Open Access, the author has applied a CC BY public copyright licence to any Author Accepted Manuscript version arising from this submission. The results leading to this publication have received funding from the Innovative Medicines Initiative 2 Joint Undertaking under grant agreement No 777394 for the project AIMS-2-TRIALS. This Joint Undertaking receives support from the European Union's Horizon 2020 research and innovation programme and EFPIA and AUTISM SPEAKS, Autistica, SFARI. SBC also received funding from the Autism Centre of Excellence, SFARI, the Templeton World Charitable Fund, the MRC, and the NIHR Cambridge Biomedical Research Centre. The research was supported by the National Institute for Health Research (NIHR) Applied Research Collaboration East of England. Any views expressed are those of the author(s) and not necessarily those of the funder.

Author contributions

M.C. co-designed the study and wrote the first draft. V.P.S. conducted the analysis and wrote the results. I.Z., C.B. managed the data collection, prepared the figures and tables. V.W. edited the manuscript. The LabNPEE group collected the data. S.R., B.R., S.S. performed laboratory work. S.B.C. co-designed the study, edited the manuscript, and obtained funding for the study.

Competing interests

The authors declare no competing interests.

Additional information

Correspondence and requests for materials should be addressed to S.B.-C.

Reprints and permissions information is available at www.nature.com/reprints.

Publisher's note Springer Nature remains neutral with regard to jurisdictional claims in published maps and institutional affiliations.



Open Access This article is licensed under a Creative Commons Attribution 4.0 International License, which permits use, sharing, adaptation, distribution and reproduction in any medium or format, as long as you give appropriate credit to the original author(s) and the source, provide a link to the Creative Commons licence, and indicate if changes were made. The images or other third party material in this article are included in the article's Creative Commons licence, unless indicated otherwise in a credit line to the material. If material is not included in the article's Creative Commons licence and your intended use is not permitted by statutory regulation or exceeds the permitted use, you will need to obtain permission directly from the copyright holder. To view a copy of this licence, visit <http://creativecommons.org/licenses/by/4.0/>.

© The Author(s) 2022

The LabNPEE Group

Angelo Barone¹, Roberta Cecere¹, Andrea Cisone¹, Roberta Cerrone¹, Ylenia Crocetto¹, Lea Dell'Aversana¹, Alessia Delle Curti¹, Alessandro Fontana¹, Concetta Fusotto¹, Giusi Mautone¹, Generosa Montuori¹, Monica Positano¹, Gennaro Raimo¹, Annamaria Raiola¹, Maria Russo¹, Federica Sacco¹, Maria Sarno¹, Angela Sepe¹ & Alessandro Troise¹