



hPSC-derived organoids: models of human development and disease

Tristan Frum¹ · Jason R. Spence^{1,2,3}

Received: 21 April 2020 / Revised: 30 June 2020 / Accepted: 18 August 2020 / Published online: 28 August 2020
© The Author(s) 2020, corrected publication 2020

Abstract

Organoids derived from human pluripotent stem cells (hPSCs) have emerged as important models for investigating human-specific aspects of development and disease. Here we discuss hPSC-derived organoids through the lens of development—highlighting how stages of human development align with the development of hPSC-derived organoids in the tissue culture dish. Using hPSC-derived lung and intestinal organoids as examples, we discuss the value and application of such systems for understanding human biology, as well as strategies for enhancing organoid complexity and maturity.

Keywords Stem cells · Development · Organoids · Human · Disease modeling · Cell signaling

Introduction

During development, a small aggregate of pluripotent cells in the embryo are guided through a series of cell fate decisions to generate the incredible diversity of cell types required for human life. Along the way, multiple specialized cell types organize into complex 3D structures to build organs, which perform essential physiological tasks such as respiration in the lungs, nutrient absorption in the gut, and filtering of blood in the kidneys. For centuries, scientists have worked to understand the process of development and to identify the cellular and molecular cues that guide cells to generate a particular organ. Now, scientists are applying this knowledge to recapitulate development in a cell culture dish, guiding cells to organize into complex 3D models of human organ-like form and function, structures known as organoids.

Organoids permit scientific investigation of human development, physiology, and disease at a scale and level of precision not previously possible. Traditionally, scientists have

relied on a combination of animal models and human 2D cell culture models to investigate human biology. While these approaches have led to innumerable important discoveries, animal models and 2D cell culture models are not without their shortcomings. Animal models are complex, making it difficult to discern cause and effect for many experiments, provide limiting amounts of tissue for analysis, and by their nature are imperfect models of human physiology. Traditional human 2D cell culture models on the other hand are often too simple, containing a single cell type attached to the culture dish as a monolayer, or floating as single cells in suspension culture. Moreover, 2D cell culture models are typically derived from cancer or induced to a cancer-like state using viral oncogenes, permitting indefinite propagation of these models *in vitro*, but also leading to genomic instability that makes these models become less like the cell types they are derived from [1–3]. In these examples, human cells grown in 2D cell culture also fail to recapitulate the cell-cell interactions and 3D architecture critical to organ physiology and function. Organoids, by contrast, can be derived or generated from healthy human cells, contain many of the cell types present in an organ, maintain a stable genotype/phenotype, and retain aspects of organ architecture, physiology and function [4–7].

Methods to establish primary organoids from many different human organs have been published, including the intestine [8], pancreas [9, 10], stomach [11, 12], lung [13–17], and liver [4]. In general, conditions that establish and maintain organoids induce a highly proliferative state in organ resident stem cells by recapitulating cues from the stem cell niche that promote stem cell self-renewal and differentiation during normal tissue homeostasis or in response to injury *in vivo*. The stem cell niche varies in

The original online version of this article was revised due to a retrospective Open Access order.

✉ Jason R. Spence
spencejr@umich.edu

¹ Department of Internal Medicine, Gastroenterology, University of Michigan Medical School, Ann Arbor, MI, USA

² Department of Cell and Developmental Biology, University of Michigan Medical School, Ann Arbor, MI, USA

³ Department of Biomedical Engineering, University of Michigan College of Engineering, Ann Arbor, MI, USA

composition across different organs and stem cell compartments and is composed of physical and chemical cues, such as the extracellular matrix and growth factor signaling molecules, respectively. Thus, the act of establishing conditions to maintain organoids is in itself informative for understanding how the stem cell niche regulates the behavior of stem cells in normal and pathological states across many different organ systems.

Organoids can be established from healthy or diseased patient tissue and have numerous basic and translational applications including disease modeling, personalized medicine, and for the development of therapeutics. For instance, using material derived from patients organoid models of cystic fibrosis [18–20], polycystic kidney disease [21, 22], Hermansky-Pudlak syndrome [23], and even complex neurological disorders such as Rett syndrome [24] have been established. Similarly, healthy organoids can be used to model disease onset [25–27], which is of particular interest as the early stage of disease is often the most challenging to observe *in vivo* and when therapeutic intervention is likely to be most effective. Importantly, organoid models can be established from any patient, and therefore have the potential to capture patient-specific aspects of any disease and guide the personalization of therapeutics. To this end, several groups have harnessed the proliferative capacity of organoid models to develop high-throughput screening methodologies against a variety of diseases, laying the groundwork for the development of therapies that address the patient specific aspects of disease [5, 18, 19, 28, 29].

While patient-derived organoids are commonly employed for *in vitro* modelling of human organ physiology, limited access to some patients and genetic diversity within the human population make patient-derived organoids less suitable for some studies. This has enhanced interest in the establishment of methods to generate organoids from human pluripotent stem cells (hPSCs), which are renewable, widely available, and are maintained under highly standardized culture conditions [30, 31]. In general, protocols to generate organoids from hPSCs attempt to mimic human development and organogenesis in a step-wise manner. In contrast to patient-derived organoids, which more closely resemble adult tissue, hPSC-derived cells and organoids often are more similar to immature or fetal tissue undergoing development [32–37]. In addition, hPSC-derived organoids can possess non-desired cell types [33, 38, 39], likely due to imperfect differentiation/maintenance conditions. To this end, researchers working to improve hPSC-derived organoid models have relied on the utilization of fetal tissue to provide a road-map to improve hPSC-derived organoid models, and as an essential *in vivo* reference to benchmark hPSC-derived organoids [17, 33, 40–45].

Here we will provide an overview of the generation of hPSC-derived organoids, highlighting the contribution of developmental biology to understanding the physical and molecular cues that guide the development of cells in the culture

dish. We will focus on directed differentiation of hPSCs towards definitive endoderm, en route to making hPSC-derived lung organoids (HLOs) and hPSC-derived intestinal organoids (HIOs). We discuss strategies to drive organoid maturation and to circumvent current limitations to organoid complexity. Finally, we discuss current and potential applications well suited to hPSC-derived organoids.

From pluripotency to germ layer specification

To generate organoids, researchers harness the developmental potential of hPSCs, which have the capacity to differentiate into any cell type in the human body—a property known as pluripotency. hPSCs are established by isolating pluripotent embryonic stem cells from early human embryos [46], or by inducing differentiated cells to reacquire pluripotency [47]. hPSCs can be expanded in the laboratory under conditions that maintain pluripotency, or alternatively guided through a series of cell fate decisions to generate desired cell types, an approach termed directed differentiation. Directed differentiation can be thought of as a tree of cell fate decisions. Cells proceed through these cell fate decisions in a step-by-step fashion, with each step further committing a cell towards the desired cell type, while restricting the potential to generate alternative cell types. A series of these decisions culminating in the formation of a fully differentiated cell type is referred to as a cell lineage or collectively as a lineage tree. Importantly, comparison of single-cell RNA sequencing from human fetal tissue and from hPSC-derived organoids and their intermediates demonstrates that the structure of lineage trees appears to be broadly consistent whether cells are undergoing development *in vivo* or in a culture dish [17, 33, 40–45].

As hPSCs exit pluripotency and begin to differentiate, the first cell fate decision commits hPSCs to one of the germ layers established early in human development: the endoderm, mesoderm, and ectoderm. In the embryo, the process by which cells make this first decision is referred to as gastrulation. Studies of gastrulation in model organisms have identified key signaling pathways and their requirements for endoderm, mesoderm, and ectoderm formation [48–50]. These studies point to members of the TGF- β signaling superfamily as important signaling molecules that regulate cell fate choice towards a particular germ layer, with NODAL playing a key role in stimulating TGF- β signaling to promote endodermal differentiation *in vivo*. In contrast, the absence of TGF- β signaling promotes ectodermal cell fate (Fig. 1a). This knowledge has been leveraged *in vitro* to guide hPSCs through germ layer specification and protocols to generate near-pure populations of endoderm, mesoderm, and ectoderm have been developed [51–55]. These protocols mirror development, by either stimulating TGF- β signaling with ACTIVIN A to target endoderm [51, 54], or by inhibiting TGF- β signaling to target ectoderm [53]. Conditions to induce mesoderm formation

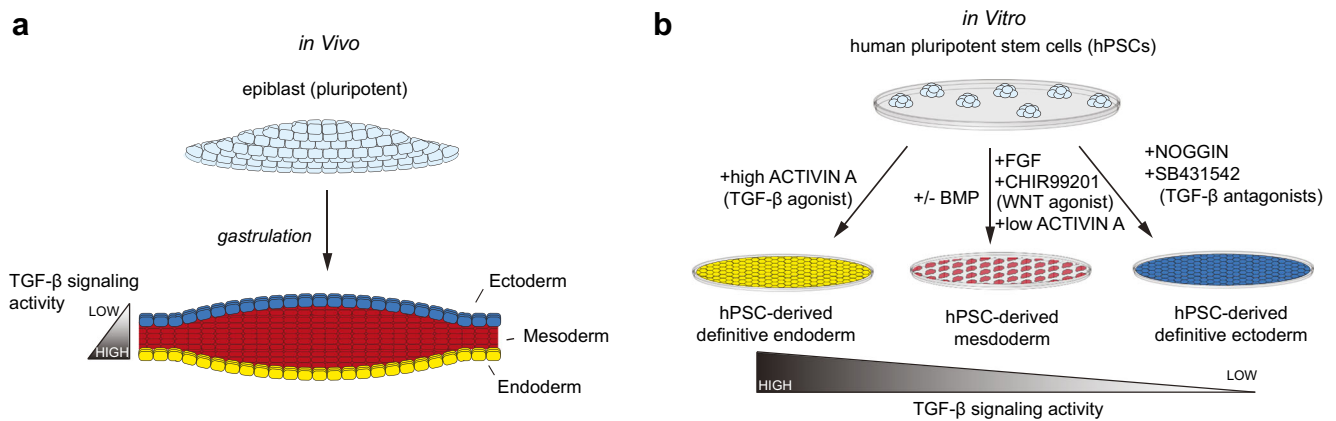


Fig. 1 Germ layer specification *in vivo* (a) and *in vitro* (b). During gastrulation differentiation of the pluripotent epiblast is regulated by TGF- β signaling. Epiblast cells experiencing high levels of TGF- β signaling differentiate to endoderm. Epiblast cells experiencing low levels of TGF- β signaling differentiate to ectoderm (a). Stimulation of TGF- β signaling by exogenous ACTIVIN A directs hPSCs to differentiate into

endoderm (b). In contrast, blocking TGF- β signaling directs hPSCs to differentiate into ectoderm (b). Directed differentiation targeting mesoderm stimulates WNT, FGF and intermediate levels of TGF- β signaling with the presence or absence of BMP targeting differentiation toward specific mesoderm sub-populations (b)

stimulate WNT, FGF, and intermediate levels TGF- β signaling, with modulation of BMP signaling altering differentiation to target particular sub-populations of mesoderm [52, 55–57]. Thus, by manipulating TGF- β signaling *in vitro*, hPSCs can be reproducibly differentiated towards a specific germ layer (Fig. 1b). It is important to note that many protocols to target differentiation towards the desired germ layer(s) exist; however, generation of organoids containing cells from multiple germ layers (i.e., epithelial and mesodermal/stromal) requires co-differentiation of both lineages within a culture. This is often achieved by differentiating to one germ layer with less than perfect efficiency (i.e., endoderm), resulting in co-differentiation of other lineages (i.e., mesoderm).

Establishing regional identity

Differentiating hPSCs towards the endoderm lineage is the first step to make organoids representing endodermally derived organs, such as the esophagus, lung, stomach, liver, intestine, or colon. The next step of directed differentiation attempts to recapitulate developmental signaling that further patterns endoderm into specific regional identities—ultimately determining organ identity. *In vivo*, these regional endoderm identities correspond to their location within the embryo, with identity first being established along the anterior to posterior (head-to-tail) axis. This leads to patterning of the endoderm into an anterior foregut domain, which gives rise to the thyroid, esophagus, trachea and lung, a posterior foregut domain giving rise to the stomach, liver and pancreas, a mid-gut domain which generates digestive portions of the intestine, and a hindgut domain giving rise to the remaining portions of the intestine including the majority of the colon (Fig. 2a). In relation to other germ layers, regional patterning of the

endoderm is akin to patterning of the ectoderm into regions of central nervous, neural crest, and epidermal differentiation.

The response of hPSC-derived endoderm to cell signaling pathways *in vitro* is similar to that of endoderm undergoing development *in vivo* with respect to both inducing regional anterior posterior identity and to recapitulating aspects of gut tube morphogenesis. Studies from animal models point to a conserved signaling network involving WNT, FGF, and BMP signaling responsible for patterning regional identity in the vertebrate endoderm [49]. In general, high activity of these signaling pathways promotes posterior identities, while lower activity promotes anterior cell fates. This gradient of signaling pathway activity is established in part by the localization of BMP signaling antagonists, such as NOGGIN to the anterior side of the embryo [58, 59] (Fig. 2a). Accordingly, the presence of NOGGIN or other BMP signaling inhibitors in hPSC-derived endoderm cultures promotes anterior foregut identity, and is an essential step in the generation of foregut-derived organoids such as the lung and stomach [16, 20, 34, 60–67] (Fig. 2b). Alternatively, placing hPSC-derived endoderm into conditions that stimulate WNT and FGF signaling, while permitting endogenous BMP signaling to occur promotes mid- and hindgut identity and is an important step for the formation of intestinal organoids [68–71] (Fig. 2b).

Remarkably, stimulation of FGF and WNT signaling *in vitro* is sufficient for both foregut and hindgut patterned hPSC-derived endoderm to engage morphogenic processes akin to the formation of the primitive gut tube *in vivo*, forming aggregates of epithelial progenitors and mesenchyme precursors that bud up from the culture dish and pinch off to form 3D spheroids [34, 64, 69]. Spheroids are named according to their regional identity, with foregut endoderm cultures giving rise to foregut spheroids, and hindgut endoderm cultures giving rise to hindgut spheroids, which are then embedded into an

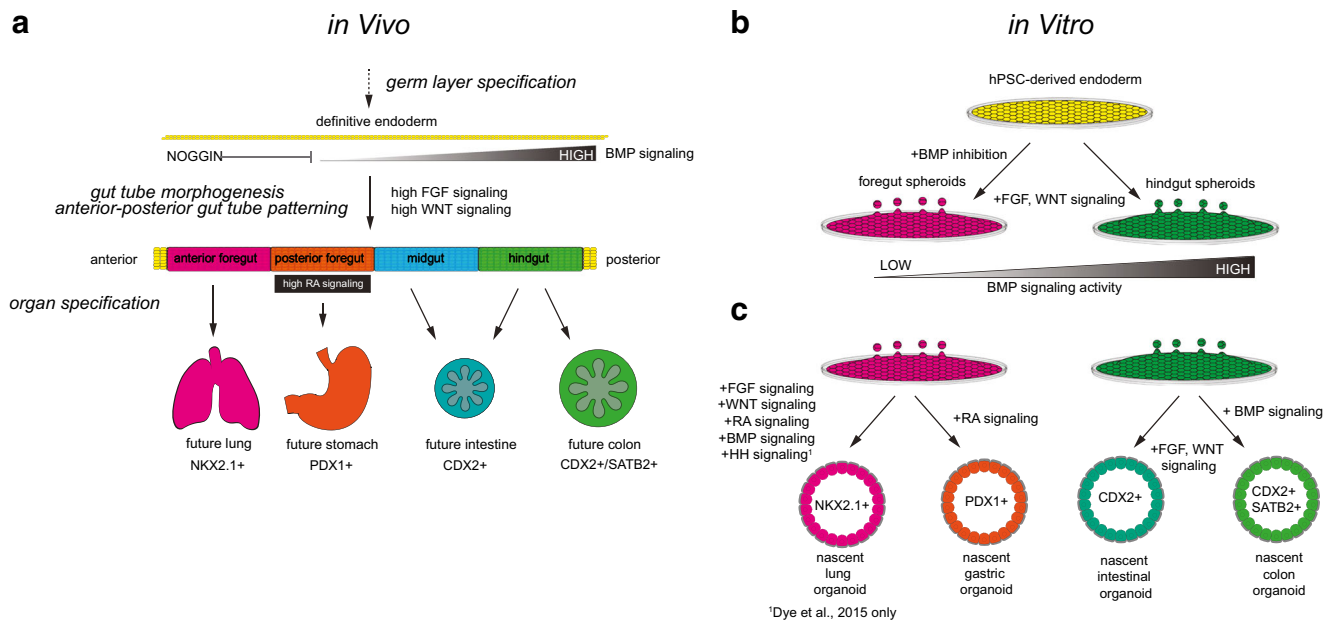


Fig. 2 Regional patterning of the endoderm and specification of organ-specific progenitors in vivo (**a**) and in vitro (**b**, **c**). In vivo WNT, FGF, and BMP signaling pattern the gut tube into regional domains along the anterior to posterior axis, with high levels of BMP signaling promoting posterior regional identities. NOGGIN is localized to the anterior region where it represses BMP signaling to specify foregut regional identities. Retinoic acid (RA) signaling further regulates further regionalization of foregut lineages. Regional patterning restricts the developmental trajectory of endoderm towards specific organs. Molecular markers of organ identity are shown below each organ (**a**). hPSC-derived definitive

endoderm can be further differentiated to make foregut or hindgut spheroids by manipulating BMP signaling in the presence of WNT and FGF signaling agonists (**b**). To make organoids, hPSC-derived endoderm spheroids are embedded in 3D extracellular matrix and are further differentiated towards organ-specific progenitors. These methods include increasing RA signaling to differentiate gastric progenitors from foregut spheroids and increasing BMP signaling to differentiate hindgut spheroids towards colonic progenitors. When organoid specification is complete, organoids express the same molecular markers as their in vivo counterparts (**c**)

extracellular matrix such as Matrigel to permit continued expansion and directed differentiation in 3D (Fig. 2b).

Establishment of organ-specific progenitors

After patterning hPSC-derived endoderm towards a specific region along the anterior posterior axis and transitioning to 3D growth in extracellular matrix, cell fate is further refined to generate progenitors for specific organs, a step that is required for long-term growth.

Methods to induce and maintain tissue-specific progenitors have relied on conserved transcription factors that are known to mark specific progenitor populations, such as NKX2.1 in lung epithelial progenitors and CDX2 in intestinal epithelial progenitors. These markers are useful to screen for conditions that enhance marker expression, signifying a more efficient and targeted differentiation towards a particular fate. This approach has identified Hedgehog, WNT, FGF, Retinoic acid (RA), and TGF- β signaling pathways as pathways that can be stimulated in culture to further differentiate foregut endoderm into lung progenitors [34, 62, 70] (Fig. 2c). Alternatively, extending RA treatment in the absence of simulating other signaling pathways directs foregut endoderm to

generate gastric progenitors [64, 72] (Fig. 2c), consistent with the role of RA signaling in regulating progenitor identity in the posterior foregut endoderm in vivo [73, 74]. Likewise, regional identity can be further refined in hindgut spheroids towards sub-regions of the intestine, such as the duodenum or ileum by varying the length of WNT and FGF signaling stimulation [75] or by exogenously stimulating BMP signaling to further posteriorize hindgut endoderm towards a colonic epithelial progenitor identity [71] (Fig. 2c).

In directed differentiation protocols where 3D structures do not form naturally, regionalized endoderm is further differentiated towards specific progenitors in 2D culture which are then purified and embedded as single cells in extracellular matrix to facilitate self-organization and expansion into 3D structures. This approach has been utilized in the generation of various types of lung organoids [20, 63, 66]. To this end, molecular profiling of lung progenitors from fetal tissue has identified useful cell surface markers for the isolation of lung progenitors [63, 76]. Alternatively, other groups have applied genome engineering to create hPSC lines with fluorescent reporters of lung progenitor identity, permitting real-time monitoring of progenitor cell specification and dynamics in culture, as well as their isolation [20, 66]. hPSC lines with

reporters of intestinal progenitor identity have also been utilized to follow the dynamics of intestinal progenitor specification in culture, and to purify intestinal progenitors away from mesenchyme precursors to generate epithelial only intestinal organoids [72, 77].

After progenitor cells are specified, nascent organoids are shifted from progenitor-inducing media to progenitor expansion and maintenance media, leading to continued organoid growth that mirrors aspects of organ development in vivo. For example, HIOs under maintenance conditions undergo an initial 2-week period of intestinal progenitor expansion, followed by the emergence of intestinal epithelial cell types, such as enterocytes and Goblet cells and LGR5+ intestinal stem cells [37, 69]. Concurrently, HIOs undergo morphogenic events similar to those occurring during fetal intestinal development, including columnar organization of the epithelium, the emergence of sparse finger-like protrusions into the organoid lumen, reminiscent of a nascent villus [69]. Therefore, HIOs recapitulate aspects of fetal intestine development including cell type organization and morphogenesis as they are maintained in culture.

Methods to generate hPSC-derived HLOs are more varied than those to generate HIOs. This may either reflect a fundamental difference in lung and intestinal progenitor cell specification, or may simply reflect preference for a particular protocol/method. HLOs share many aspects with fetal lung development as they expand in culture. HLOs maintained in conditions of high FGF signaling give rise first to NKX2.1+/SOX2+/SOX9+ epithelial cells, reminiscent of early lung progenitors [34]. Alternatively, if HLOs are put into more complex media stimulating BMP, FGF, RA, and WNT signaling, lung epithelial progenitors undergo extensive branching reminiscent of branching morphogenesis during lung development [65]. Changing media conditions lead to the emergence of proximal airway TP63+ basal cells within the first 25 days of culture, followed by cells expressing markers of the alveolar epithelium, similar to the timing of cell differentiation during fetal lung development in which the specification of airway epithelial precedes the appearance of alveolar cells. Moreover, when cultured under conditions permitting differentiation, HLOs exhibit airway to alveolar organization similar to the human lung epithelium, with cells expressing markers of airway predominantly localized inside HLOs and cells expressing markers of the distal lung predominantly localized externally [16, 65].

Alternative to the methods described above, in which progenitor cells undergo expansion accompanied by stochastic differentiation, HLOs enriched for populations of specific lung epithelial progenitor cell types can also be generated. For example, conditions promoting long-term maintenance of nearly pure populations of lung epithelial progenitors, called bud-tip organoids (BTOs) have been established [16]. Notably, establishment of these conditions relied heavily on

the isolations and characterization of progenitors present in the tips of developing fetal lungs [15, 16]. Methods also exist to generate HLOs enriched for more committed lung progenitors such as TP63+ airway basal cells [17, 78] or for alveolar type II cells [66]. Specification and maintenance of TP63+ basal cells in HLOs are achieved by manipulating TGF- β signaling activity, mirroring regulation of basal cell specification by TGF- β signaling in vivo [79]. Likewise, differentiation of alveolar type II cells from hPSC-derived lung endoderm is promoted by glucocorticoid and WNT signaling pathways, which have also been implicated in promoting alveolar cell fate specification in murine lung development [80–82]. The existence of multiple types of HLOs, enriched for different lung progenitor cell types which are responsive to signaling pathways that regulate their behavior during development in vivo provides exciting flexibility to model transitions between lung progenitor cell states in vitro using HLOs [67].

Strategies to increase organoid maturity

A variety of approaches exist to drive maturation of organoids, which typically describe further patterning of organoids into domains of differentiated and progenitor cells, an increased proportion of differentiated cells, and increased functionality in differentiated cells. The simplest approach is to allow time for the organoids to mature; organoids exhibit an inherent capacity to mature and if left undisturbed in culture and typically increase in cellular diversity and continue to emulate features of early fetal organogenesis over time. However, this capacity is limited, as organoids cultured for multiple months still exhibit transcriptional and proteomic profiles consistent with fetal tissue rather than adult tissue. In addition, as organoids increase in size and complexity, issues such as nutrient and oxygen availability arise and can lead to necrosis in the organoid core.

Intriguingly, transplantation of organoids into amenable sites in a mouse host results in maturation far beyond those of organoids cultured in vitro [37, 65, 83–86]. For example, HIOs transplanted under the kidney capsule of immunodeficient mice exhibit enhanced expression of brush border enzymes and increased cellular differentiation and formation of villus and crypt structures reminiscent of functional intestinal epithelium [37, 85]. Likewise, HLOs transplanted in a similar manner form structures resembling the respiratory airway, with increased epithelial cell diversity relative to that observed in vitro [65, 86]. Along with the hallmarks of maturation noted in the above examples, transplanted HIOs and HLOs become highly vascularized by host cells, increase in size beyond the limit observed in vitro, and exhibit increased mesenchymal diversity and organization [37, 65, 85, 86].

Undoubtedly, the in vivo environment presents chemical cues whose organoid maturing effects have yet to be recognized. Thus, there is likely much work to be done on refining

culture conditions to promote maturation of hPSC-derived organoids. Indeed, even in the case of adult stem-derived organoids, refinement of the composition of organoid maintenance media greatly increases cellular diversity [87]. In addition, the association of vascularization and increased mesenchymal complexity with organoid maturation has generated interest in the application of co-culture systems to exogenously seed hPSC-derived organoids with endothelial and other mesenchymal cell types. Such systems have been demonstrated to increase maturation in hPSC-derived brain, lung, liver, and kidney organoids [63, 83, 84, 88, 89]. The presence of endogenous endothelial cells has been demonstrated in hPSC-derived kidney organoids, raising the possibility that other hPSC-derived organoid models may possess similar potential for self-vascularization [36, 44, 89, 90]. The above approaches rely on self-assembly of endothelial cells into networks of vasculature, and alternatively approaches to bioengineer complex vascular networks to support organoid growth and maturation are also rapidly advancing [91].

Finally, great interest exists in the development of bioengineered approaches that attempt to recapitulate physical and other forces acting as maturation cues during development that are not easily translated to the tissue culture dish. For instance, mechanical forces such as tension and extracellular matrix stiffness have long been appreciated as important cues for cellular differentiation and behavior [92]. While Matrigel is widely employed as a growth substrate to support 3D growth of organoids, a variety of synthetic hydrogel compositions have been demonstrated to support the growth and the developmental potential of HIOs offering a more defined alternative with tunable properties such as stiffness and composition [93, 94]. In addition, complex growth substrate matrices that endow spatial and temporal control over substrate stiffness and composition are currently being developed [95, 96]. Microfluidic platforms are also being engineered to recapitulate other physical developmental cues such as flow, and to engineer growth factor/morphogen gradients to generate reproducible organoid architectures [97–99].

Heavily influenced by our understanding of forces that guide organ maturation during development, the above approaches offer promising avenues to mature hPSC-derived organoids in vitro. Moreover, recapitulation of organ maturation in the culture dish is by its very essence a reductive approach, promising exciting insights into human development and mechanisms of human disease.

Current and future applications for organoids

Although much work remains to improve the complexity and reproducibility of hPSC-derived organoid cultures, hPSC-derived organoids have the potential to provide insight into important areas of medical research, including genetic disease, host-microbe interactions, emerging viral infections, and pre-

term infant care. For example, HIOs have been applied to model the contribution of the microbiome to fetal development and human disease by infection with commensal or pathogenic microorganisms [100–103]. Intriguingly, infection of HIOs with non-pathogenic *E.coli* leads to enterocyte maturation in HIOs, suggesting microbe colonization can act as a maturing force in hPSC-derived organoids [103]. Feasibility of HIOs for studying common viral infections has also been demonstrated [104]. HLOs have also been applied to model common respiratory infections such as a respiratory syncytial virus [65, 105]. Of particular interest, adult stem cell-derived HLOs have been utilized as platforms to assess infectivity of emerging influenza strains [106, 107], suggesting hPSC-derived HLOs could provide a renewable source of respiratory tissue for modeling emerging and common respiratory infections.

In addition, hPSCs are amenable to genome engineering and provide an opportunity to derive iPSC lines from patients carrying disease-associated mutations, making hPSC-derived organoids particularly well suited for modeling genetic disease. iPSC lines derived from patients have been shown to recapitulate pathologic phenotypes in retinal [108], lung [20, 66, 78], kidney [21], intestinal [109], and colonic [110, 111] organoids, among many others. In many of these studies, genome engineering is applied to generate mutation-corrected iPSC lines, which permit the comparison of organoid development between genetic backgrounds that only differ at the site of the mutation under investigation. This strategy of comparing organoids from patient-derived and mutation-corrected iPSCs is an invaluable approach to assessing the contribution of individual risk variants to disease phenotypes.

hPSC-derived organoids are particularly applicable to modeling diseases associated with pre-term birth since they resemble developing fetal tissue [32–34, 36, 37, 84]. Due to the relatively late developmental timing (3rd trimester) at which the lung becomes competent for gas exchange, diseases associated with pre-term birth are especially relevant to HLOs. Therapies to support respiration in pre-term infants include mechanical ventilation, which can induce long-term lung disease known as bronchopulmonary dysplasia [112]; thus, alternative therapies are desperately sought-after. Glucocorticoid steroids have long been recognized for their ability to accelerate surfactant production [113–115], a hallmark of lung maturation. HLOs can be applied to investigate the mechanism by which glucocorticoids promote lung maturation, leading to improved treatment regimens for pregnancies at significant pre-term birth risk. Additionally, HLOs are already an excellent platform to screen for additional molecules accelerating the development and maturation of human lung cells, leading to novel therapies to rescue lung function in pre-term infants.

HIOs also present opportunities for application to pre-term or low birthweight-associated disease. In particular, a major issue for pre-term infants is nutrient delivery. In utero, nutrient

delivery occurs through the placenta. In the neo-natal intensive care unit, doctors must choose between delivering nutrients parenterally (i.e., intravenously), a highly invasive procedure leading to numerous complications, or enterally, which has high risk for the development of necrotizing enterocolitis (NEC). NEC is thought to arise due to a confluence of factors including epithelial barrier dysfunction in the immature fetal GI tract, likely mediated by microbial colonization, premature feeding, and associated inflammation [116, 117]. Methods have been developed to assess barrier function in HIOs and to inoculate HIOs with microbes [101–103, 118], presenting opportunities to model fetal intestinal barrier function in different microbial contexts with HIOs. Additionally, feasibility of modeling nutrient uptake has been demonstrated in primary intestinal organoids from mice [119], and the development of analogous methods in hPSC-derived HIOs will permit modeling of human fetal intestine nutrient uptake and the development of therapies that accelerate maturation involved with nutrient uptake function in the fetal intestine.

Promise and Challenges

hPSC-derived organoids hold great potential for investigating human specific aspects of development and disease. In their current form, hPSC-derived organoids are excellent models of early fetal development, presenting opportunities to model congenital disease and to improve pre-term neonatology. Efforts are currently underway to increase the complexity and maturity of hPSC-derived organoids, with the eventual goal of using hPSC-derived organoids to model all stages of organ development, from fetal, through adulthood, and in aging. Achievement of this goal will have profound impact on human health, but in order to realize this great promise, important challenges will need to be addressed.

A long-standing challenge for the field remains the standardization of hPSCs from different sources and across different laboratories. For the purposes of this review, we referred to pluripotent stem cells derived from embryos (ESCs) and patients (iPSCs) collectively as hPSCs; however, fundamental differences exist between ESCs and iPSCs, including their differentiation and tumorigenic potential. Epigenetic memory of the cell type of origin has been proposed to partially account for differences in differentiation potential among iPSC lines [120, 121], while other studies have argued that genetic background underlies differences between iPSC lines [122]. In addition, multiple methods to generate iPSC cells are employed, some with higher potential to malign the resulting product than others. Because of these potential differences, it is imperative that any significant insight derived from organoids be demonstrated across multiple hPSC lines where possible. To this end, guidelines for defining and identifying clinical grade iPSC lines have

been proposed [123], and widespread adoption of such criteria as well as standardization of culture conditions will help to avoid future controversy.

Additionally, because hPSC-derived organoids begin life as pluripotent cells, a unique challenge to application of hPSC-derived organoids is the presence of contaminating cell types in some differentiation protocols. These cells can be either incorrectly specified as the result of sub-optimal differentiation conditions or the result of cells failing to maintain lineage commitment, a result likely reflective of sub-optimal organoid maintenance conditions. As mentioned previously, having sub-pure mixed cultures are advantageous, permitting the co-derivation of mesenchyme and epithelium to generate organoids consisting of multiple germ layers. In other cases, cell types from different organs may be mixed to an extent that makes experimental interpretation meaningless in relation to human physiology. Thus, although there has been much progress made in recent years, particularly with the application of single-cell technologies to refine differentiation protocols, there is still much room for improvement.

Another persistent challenge will be access to tissue necessary to benchmark *in vitro*-derived organoids. While insights from the development of model organisms will undoubtedly provide important context, as hPSC-derived organoids become more similar to the *in vivo* organs they model, uniquely human aspects of organ development and physiology will become apparent. Thus, benchmarking hPSC-derived organoids against both fetal and adult human tissue is a necessary step to ensure the accuracy of organoid systems [17, 33, 40–45]. Although these studies operate under very strict regulatory and ethical guidelines and utilize fetal tissue specimens that would otherwise be discarded, the use of such tissue remains a polarizing issue in the USA and in other parts of the world. In particular, the use of fetal tissue in research has become entangled with complex political and societal issues, such as abortion, requiring careful consideration for how this research may benefit society as a whole. Therefore, it is imperative that scientists counter misinformation, continue to highlight the societal benefit of their research that utilizes both hPSC-derived tissues and where necessary, fetal tissue, and participate in the development of an ethical and regulatory framework that permits the continuation of such research.

It is remarkable how far hPSC-derived organoids have come in the approximately 20 years since the derivation of the first human pluripotent stem cell line [46]: from essential discoveries of how to coax hPSCs to differentiate towards specific germ layers, to identification of signaling pathways that promote the emergence of particular organ progenitors, to the creation of 3D models of organ development and function. As hPSC-derived organoid models continue to increase in complexity and fidelity, we can look forward to an increased understanding of human-specific aspects of development and disease leading to improved human health.

Acknowledgments We are grateful to members of the Spence Laboratory for insightful discussion and feedback on the manuscript.

Availability of data and material Not applicable.

Funding information JRS is supported by the Intestinal Stem Cell Consortium (U01DK103141), a collaborative research project funded by the National Institute of Diabetes and Digestive and Kidney Diseases (NIDDK) and the National Institute of Allergy and Infectious Diseases (NIAID). JRS is also supported by the National Heart, Lung, and Blood Institute (NHLBI-R01HL119215), by the NIAID Novel Alternative Model Systems for Enteric Diseases (NAMSED) consortium (U19AI116482) and by grant number CZF2019-002440 from the Chan Zuckerberg Initiative DAF, an advised fund of Silicon Valley Community Foundation. TF is supported by NIDCR-T32 DE00007057.

Compliance with ethical standards

Conflict of interest/competing interest The authors declare that they have no conflict of interest.

Ethics approval Not applicable.

Consent to participate Not applicable.

Consent for publication Not applicable.

Code availability Not applicable.

Open Access This article is licensed under a Creative Commons Attribution 4.0 International License, which permits use, sharing, adaptation, distribution and reproduction in any medium or format, as long as you give appropriate credit to the original author(s) and the source, provide a link to the Creative Commons licence, and indicate if changes were made. The images or other third party material in this article are included in the article's Creative Commons licence, unless indicated otherwise in a credit line to the material. If material is not included in the article's Creative Commons licence and your intended use is not permitted by statutory regulation or exceeds the permitted use, you will need to obtain permission directly from the copyright holder. To view a copy of this licence, visit <http://creativecommons.org/licenses/by/4.0/>.

References

1. Yamasaki K, Kawasaki S, Young RD et al (2009) Genomic aberrations and cellular heterogeneity in SV40-immortalized human corneal epithelial cells. *Invest Ophthalmol Vis Sci* 50:604–610
2. Oh JH, Kim YJ, Moon S et al (2013) Genotype instability during long-term subculture of lymphoblastoid cell lines. *J Hum Genet* 58:16–20
3. Gillet JP, Varma S, Gottesman MM (2013) The clinical relevance of cancer cell lines. *J Natl Cancer Inst* 105:452–458
4. Huch M, Gehart H, van Boxtel R et al (2015) Long-term culture of genome-stable bipotent stem cells from adult human liver. *Cell* 160:299–312
5. Broutier L, Mastrogianni G, Versteegen MM et al (2017) Human primary liver cancer-derived organoid cultures for disease modeling and drug screening. *Nat Med* 23:1424–1435
6. Li X, Francies HE, Secrier M et al (2018) Organoid cultures recapitulate esophageal adenocarcinoma heterogeneity providing a model for clonality studies and precision therapeutics. *Nat Commun* 9:2983
7. Seidlitz T, Merker SR, Rothe A et al (2019) Human gastric cancer modelling using organoids. *Gut* 68:207–217
8. Sato T, Stange DE, Ferrante M et al (2011) Long-term expansion of epithelial organoids from human colon, adenoma, adenocarcinoma, and Barrett's epithelium. *Gastroenterology* 141:1762–1772
9. Huch M, Bonfanti P, Boj SF et al (2013) Unlimited in vitro expansion of adult bi-potent pancreas progenitors through the Lgr5/R-spondin axis. *EMBO J* 32:2708–2721
10. Boj SF, Hwang C-I, Baker LA et al (2015) Organoid models of human and mouse ductal pancreatic cancer. *Cell* 160:324–338
11. Barker N, Huch M, Kujala P et al (2010) Lgr5 + ve stem cells drive self-renewal in the stomach and build long-lived gastric units in vitro. *Stem Cells* 6:25–36
12. Bartfeld S, Bayram T, van de Wetering M et al (2015) In vitro expansion of human gastric epithelial stem cells and their responses to bacterial infection. *Gastroenterology* 148:126–136.e6
13. Tan Q, Choi KM, Sicard D, Tschumperlin DJ (2017) Human airway organoid engineering as a step toward lung regeneration and disease modeling. *Biomaterials* 113:118–132
14. Hild M, Jaffe AB (2016) Production of 3-D airway organoids from primary human airway basal cells and their use in high-throughput screening. *Curr Protoc Stem Cell Biol* 37:IE.9.1–IE.9.15
15. Nikolić MZ, Caritg O, Jeng Q et al (2017) Human embryonic lung epithelial tips are multipotent progenitors that can be expanded in vitro as long-term self-renewing organoids. *Elife* 6:4139
16. Miller AJ, Hill DR, Nagy MS et al (2018) In vitro induction and in vivo engraftment of lung bud tip progenitor cells derived from human pluripotent stem cells. *Stem Cell Rep* 10:101–119
17. Miller AJ, Yu Q, Czerwinski M et al (2020) In vitro and in vivo development of the human airway at single-cell resolution. *Dev Cell* 53:117–128.e6
18. Dekkers JF, Wiegerinck CL, de Jonge HR et al (2013) A functional CFTR assay using primary cystic fibrosis intestinal organoids. *Nat Med* 19:939–945
19. Dekkers JF, Berkers G, Kruisselbrink E et al (2016) Characterizing responses to CFTR-modulating drugs using rectal organoids derived from subjects with cystic fibrosis. *Sci Transl Med* 8:344ra84
20. McCauley KB, Hawkins F, Serra M et al (2017) Efficient derivation of functional human airway epithelium from pluripotent stem cells via temporal regulation of Wnt signaling. *Cell Stem Cell* 20:844–857.e6
21. Freedman BS, Brooks CR, Lam AQ et al (2015) Modelling kidney disease with CRISPR-mutant kidney organoids derived from human pluripotent epiblast spheroids. *Nat Commun* 6:8715–8713
22. Cruz NM, Song X, Czerniecki SM et al (2017) Organoid cystogenesis reveals a critical role of microenvironment in human polycystic kidney disease. *Nat Mater* 16:1112–1119
23. Korogi Y, Gotoh S, Ikeo S et al (2019) In vitro disease modeling of Hermansky-Pudlak syndrome type 2 using human induced pluripotent stem cell-derived alveolar organoids. *Stem Cell Rep* 12:431–440
24. Mellios N, Feldman DA, Sheridan SD et al (2018) MeCP2-regulated miRNAs control early human neurogenesis through differential effects on ERK and AKT signaling. *Mol Psychiatry* 23:1051–1065
25. Drost J, van Jaarsveld RH, Ponsioen B et al (2015) Sequential cancer mutations in cultured human intestinal stem cells. *Nature* 521:43–47
26. Matano M, Date S, Shimokawa M et al (2015) Modeling colorectal cancer using CRISPR-Cas9-mediated engineering of human intestinal organoids. *Nat Med* 21:256–262

27. Sun L, Wang Y, Cen J et al (2019) Modelling liver cancer initiation with organoids derived from directly reprogrammed human hepatocytes. *Nat Cell Biol* 21:1015–1026
28. Hou S, Tiriach H, Sridharan BP et al (2018) Advanced development of primary pancreatic organoid tumor models for high-throughput phenotypic drug screening. *SLAS Discov* 23:574–584
29. Phan N, Hong JJ, Tofig B et al (2019) A simple high-throughput approach identifies actionable drug sensitivities in patient-derived tumor organoids. *Commun Biol* 2:78–11
30. Desai N, Rambhia P, Gishto A (2015) Human embryonic stem cell cultivation: historical perspective and evolution of xeno-free culture systems. *Reprod Biol Endocrinol* 13:9–15
31. Stacey G (2017) Stem cell banking: a global view. *Methods Mol Biol* 1590:3–10
32. Hrvatin S, O'Donnell CW, Deng F et al (2014) Differentiated human stem cells resemble fetal, not adult, β cells. *Proc Natl Acad Sci USA* 111:3038–3043
33. Camp JG, Badsha F, Florio M et al (2015) Human cerebral organoids recapitulate gene expression programs of fetal neocortex development. *Proc Natl Acad Sci USA* 112:15672–15677
34. Dye BR, Hill DR, Ferguson MAH et al (2015) In vitro generation of human pluripotent stem cell derived lung organoids. *Elife* 4:1999
35. Takebe T, Zhang R-R, Koike H et al (2014) Generation of a vascularized and functional human liver from an iPSC-derived organ bud transplant. *Nat Protoc* 9:396–409
36. Takasato M, Er PX, Chiu HS et al (2015) Kidney organoids from human iPSC cells contain multiple lineages and model human nephrogenesis. *Nature* 526:564–568
37. Finkbeiner SR, Hill DR, Altheim CH et al (2015) Transcriptome-wide analysis reveals hallmarks of human intestine development and maturation in vitro and in vivo. *Stem Cell Rep* 4:1140–1155
38. Wu H, Uchimura K, Donnelly EL et al (2018) Comparative analysis and refinement of human PSC-derived kidney organoid differentiation with single-cell transcriptomics. *Cell Stem Cell* 23:869–881.e8
39. Hurley K, Ding J, Villacorta-Martin C et al (2020) Reconstructed single-cell fate trajectories define lineage plasticity windows during differentiation of human PSC-derived distal lung progenitors. *Stem Cell*:1–40. <https://doi.org/10.1016/j.stem.2019.12.009>
40. Camp JG, Sekine K, Gerber T et al (2017) Multilineage communication regulates human liver bud development from pluripotency. *Nature* 546:533–538
41. McCauley KB, Alysandratos K-D, Jacob A et al (2018) Single-cell transcriptomic profiling of pluripotent stem cell-derived SCGB3A2+ airway epithelium. *Stem Cell Rep* 10:1579–1595
42. Ramond C, Beydag-Tasöz BS, Azad A et al (2018) Understanding human fetal pancreas development using subpopulation sorting, RNA sequencing and single-cell profiling. *Development* 145:dev165480-15
43. Czerwinski M, Holloway EM, Tsai Y-H, et al In vitro and in vivo development of the human intestinal niche at single cell resolution. 2:175. <https://doi.org/10.1101/2020.01.31.928788>
44. Holloway EM, Wu JH, Czerwinski M et al (2020) Differentiation of Human Intestinal Organoids with Endogenous Vascular Endothelial Cells. *Developmental Cell* 54:516–528.e7. <https://doi.org/10.1016/j.devcel.2020.07.023>
45. Sridhar A, Hoshino A, Finkbeiner CR et al (2020) Single-cell transcriptomic comparison of human fetal retina, hPSC-derived retinal organoids, and long-term retinal cultures. *Cell Rep* 30:1644–1659.e4
46. Thomson JA, Itskovitz-Eldor J, Shapiro SS et al (1998) Embryonic stem cell lines derived from human blastocysts. *Science* 282:1145–1147
47. Takahashi K, Yamanaka S (2006) Induction of pluripotent stem cells from mouse embryonic and adult fibroblast cultures by defined factors. *Cell* 126:663–676
48. Tam PPL, Loebel DAF (2007) Gene function in mouse embryogenesis: get set for gastrulation. *Nat Rev Genet* 8:368–381
49. Zorn AM, Wells JM (2009) Vertebrate endoderm development and organ formation. *Annu Rev Cell Dev Biol* 25:221–251
50. Robertson EJ (2014) Dose-dependent Nodal/Smad signals pattern the early mouse embryo. *Semin Cell Dev Biol* 32:73–79
51. D'Amour KA, Agulnick AD, Eliazer S et al (2005) Efficient differentiation of human embryonic stem cells to definitive endoderm. *Nat Biotechnol* 23:1534–1541
52. Sumi T, Tsuneyoshi N, Nakatsuji N, Suemori H (2008) Defining early lineage specification of human embryonic stem cells by the orchestrated balance of canonical Wnt/beta-catenin, activin/nodal and BMP signaling. *Development* 135:2969–2979
53. Chambers SM, Fasano CA, Papapetrou EP et al (2009) Highly efficient neural conversion of human ES and iPS cells by dual inhibition of SMAD signaling. *Nat Biotechnol* 27:275–280
54. Loh KM, Ang LT, Zhang J et al (2014) Efficient endoderm induction from human pluripotent stem cells by logically directing signals controlling lineage bifurcations. *Cell Stem Cell* 14:237–252
55. Takasato M, Er PX, Becroft M et al (2014) Directing human embryonic stem cell differentiation towards a renal lineage generates a self-organizing kidney. *Nat Cell Biol* 16:118–126
56. Bai H, Xie Y-L, Gao Y-X et al (2013) The balance of positive and negative effects of TGF- β signaling regulates the development of hematopoietic and endothelial progenitors in human pluripotent stem cells. *Stem Cells Dev* 22:2765–2776
57. Loh KM, Chen A, Koh PW et al (2016) Mapping the pairwise choices leading from pluripotency to human bone, heart, and other mesoderm cell types. *Cell* 166:451–467
58. Que J, Choi M, Ziel JW et al (2006) Morphogenesis of the trachea and esophagus: current players and new roles for noggin and Bmps. *Differentiation* 74:422–437
59. Fausett SR, Brunet LJ, Klingensmith J (2014) BMP antagonism by Noggin is required in presumptive notochord cells for mammalian foregut morphogenesis. *Dev Biol* 391:111–124
60. Green MD, Chen A, Nostro M-C et al (2011) Generation of anterior foregut endoderm from human embryonic and induced pluripotent stem cells. *Nat Biotechnol* 29:267–272
61. Wong AP, Bear CE, Chin S et al (2012) Directed differentiation of human pluripotent stem cells into mature airway epithelia expressing functional CFTR protein. *Nat Biotechnol* 30:876–882
62. Huang SXL, Islam MN, O'Neill J et al (2014) Efficient generation of lung and airway epithelial cells from human pluripotent stem cells. *Nat Biotechnol* 32:84–91
63. Gotoh S, Ito I, Nagasaki T et al (2014) Generation of alveolar epithelial spheroids via isolated progenitor cells from human pluripotent stem cells. *Stem Cell Rep* 3:394–403
64. McCracken KW, Catá EM, Crawford CM et al (2014) Modelling human development and disease in pluripotent stem-cell-derived gastric organoids. *Nature* 516:400–404
65. Chen Y-W, Huang SX, de Carvalho ALRT et al (2017) A three-dimensional model of human lung development and disease from pluripotent stem cells. *Nat Cell Biol* 19:542–549
66. Jacob A, Morley M, Hawkins F et al (2017) Differentiation of human pluripotent stem cells into functional lung alveolar epithelial cells. *Cell Stem Cell* 21:472–488.e10
67. Miller AJ, Dye BR, Ferrer-Torres D et al (2019) Generation of lung organoids from human pluripotent stem cells in vitro. *Nat Protoc* 25:1
68. McCracken KW, Howell JC, Wells JM, Spence JR (2011) Generating human intestinal tissue from pluripotent stem cells in vitro. *Nature* 6:1920–1928

69. Spence JR, Mayhew CN, Rankin SA et al (2011) Directed differentiation of human pluripotent stem cells into intestinal tissue in vitro. *Nature* 470:105–109
70. Hannan NRF, Fordham RP, Syed YA et al (2013) Generation of multipotent foregut stem cells from human pluripotent stem cells. *Stem Cell Rep* 1:293–306
71. Múnera JO, Sundaram N, Rankin SA et al (2017) Differentiation of human pluripotent stem cells into colonic organoids via transient activation of BMP signaling. *Cell Stem Cell* 21:51–64.e6
72. Davenport C, Diekmann U, Budde I et al (2016) Anterior-posterior patterning of definitive endoderm generated from human embryonic stem cells depends on the differential signaling of retinoic acid, Wnt-, and BMP-signaling. *Stem Cells* 34:2635–2647
73. Wang Z, Dollé P, Cardoso WV, Niederreither K (2006) Retinoic acid regulates morphogenesis and patterning of posterior foregut derivatives. *Dev Biol* 297:433–445
74. Kelly G, Drysdale T (2015) Retinoic Acid and the Development of the Endoderm. *JDB* 3:25–56
75. Tsai Y-H, Nattiv R, Dedhia PH et al (2017) In vitro patterning of pluripotent stem cell-derived intestine recapitulates in vivo human development. *Development* 144:1045–1055
76. Hawkins F, Kramer P, Jacob A et al (2017) Prospective isolation of NKX2-1-expressing human lung progenitors derived from pluripotent stem cells. *J Clin Invest* 127:2277–2294
77. Mithal A, Capilla A, Heinze D et al (2020) Generation of mesenchyme free intestinal organoids from human induced pluripotent stem cells. *Nat Commun* 11:215–215
78. Hawkins FJ, Suzuki S, Beermann ML et al (2020) Derivation of airway basal stem cells from human pluripotent stem cells. *bioRxiv*:1–24. <https://doi.org/10.1101/2020.02.21.959395>
79. Mou H, Vinarsky V, Tata PR et al (2016) Dual SMAD signaling inhibition enables long-term expansion of diverse epithelial basal cells. *Cell Stem Cell* 19:217–231
80. Alanis DM, Chang DR, Akiyama H et al (2014) Two nested developmental waves demarcate a compartment boundary in the mouse lung. *Nat Commun* 5:3923
81. Frank DB, Peng T, Zepp JA et al (2016) Emergence of a wave of Wnt signaling that regulates lung alveologenesis by controlling epithelial self-renewal and differentiation. *Cell Rep* 17:2312–2325
82. Laresgoiti U, Nikolić MZ, Rao C et al (2016) Lung epithelial tip progenitors integrate glucocorticoid- and STAT3-mediated signals to control progeny fate. *Development* 143:3686–3699
83. Mansour AA, Gonçalves JT, Bloyd CW et al (2018) An in vivo model of functional and vascularized human brain organoids. *Nat Biotechnol* 36:432–441
84. Takebe T, Sekine K, Enomura M et al (2013) Vascularized and functional human liver from an iPSC-derived organ bud transplant. *Nature* 499:481–484
85. Watson CL, Mahe MM, Múnera J et al (2014) An in vivo model of human small intestine using pluripotent stem cells. *Nat Med* 20:1310–1314
86. Dye BR, Dedhia PH, Miller AJ et al (2016) A bioengineered niche promotes in vivo engraftment and maturation of pluripotent stem cell derived human lung organoids. *Elife* 5:3025
87. Fujii M, Matano M, Toshimitsu K et al (2018) Human intestinal organoids maintain self-renewal capacity and cellular diversity in niche-inspired culture condition. *Cell Stem Cell* 23:787–793.e6
88. Takebe T, Sekine K, Kimura M et al (2017) Massive and reproducible production of liver buds natively from human pluripotent stem cells. *Cell Rep* 21:2661–2670
89. Low JH, Li P, Chew EGY et al (2019) Generation of human PSC-derived kidney organoids with patterned nephron segments and a de novo vascular network. *Stem Cell* 25:373–387.e9
90. Takasato M, Er PX, Chiu HS, Little MH (2016) Generation of kidney organoids from human pluripotent stem cells. *Nature* 11:1681–1692
91. Grebenyuk S, Ranga A (2019) Engineering organoid vascularization. *Front Bioeng Biotechnol* 7:39
92. Mammoto T, Ingber DE (2010) Mechanical control of tissue and organ development. *Development* 137:1407–1420
93. Cruz-Acuña R, Quirós M, Farkas AE et al (2017) Synthetic hydrogels for human intestinal organoid generation and colonic wound repair. *Nat Cell Biol* 19:1326–1335
94. Capeling MM, Czerwinski M, Huang S et al (2018) Nonadhesive alginate hydrogels support growth of pluripotent stem cell-derived intestinal organoids. *Stem Cell Rep*. <https://doi.org/10.1016/j.stemcr.2018.12.001>
95. Holloway EM, Capeling MM, Spence JR (2019) Biologically inspired approaches to enhance human organoid complexity. *Development* 146:dev166173
96. Silva TP, Cotovio JP, Bekman E et al (2019) Design principles for pluripotent stem cell-derived organoid Engineering. *Stem Cells Int* 2019:1–17
97. Murrow LM, Weber RJ, Gartner ZJ (2017) Dissecting the stem cell niche with organoid models: an engineering-based approach. *Development* 144:998–1007
98. Kankala RK, Wang S-B, Chen A-Z (2018) Microengineered organ-on-a-chip platforms towards personalized medicine. *Curr Pharm Des* 24:5354–5366
99. Yu F, Hunziker W, Choudhury D (2019) Engineering microfluidic organoid-on-a-chip platforms. *Micromachines (Basel)*. <https://doi.org/10.3390/mi10030165>
100. Engevik MA, Yacyszyn MB, Engevik KA et al (2015) Human *Clostridium difficile* infection: altered mucus production and composition. *Am J Physiol Gastrointest Liver Physiol* 308:G510–G524
101. Leslie JL, Huang S, Opp JS et al (2014) Persistence and toxin production by *Clostridium difficile* within human intestinal Organoids Result in Disruption of Epithelial Paracellular Barrier Function. *Infect Immun* 83:138–145
102. Forbester JL, Goulding D, Vallier L et al (2015) Interaction of *Salmonella enterica* Serovar Typhimurium with intestinal organoids derived from human induced pluripotent stem cells. *Infect Immun* 83:2926–2934
103. Hill DR, Huang S, Nagy MS et al (2017) Bacterial colonization stimulates a complex physiological response in the immature human intestinal epithelium. *Elife* 6:237ra65
104. Finkbeiner SR, Zeng X-L, Utama B et al (2012) Stem cell-derived human intestinal organoids as an infection model for rotaviruses. *mBio* 3:e00159-12
105. Porotto M, Ferren M, Chen YW et al (2019) Authentic modeling of human respiratory virus infection in human pluripotent stem cell-derived lung organoids. *mBio* 10:613-13
106. Zhou J, Li C, Sachs N et al (2018) Differentiated human airway organoids to assess infectivity of emerging influenza virus. *Proc Natl Acad Sci USA* 115:6822–6827
107. Hui KPY, Ching RHH, Chan SKH et al (2018) Tropism, replication competence, and innate immune responses of influenza virus: an analysis of human airway organoids and ex-vivo bronchus cultures. *Lancet Respir Med* 6:846–854
108. Lane A, Jovanovic K, Shortall C et al (2020) Modeling and rescue of RP2 retinitis pigmentosa using iPSC-derived retinal organoids. *Stem Cell Rep*. <https://doi.org/10.1016/j.stemcr.2020.05.007>
109. Fleischer A, Vallejo-Díez S, Martín-Fernández JM et al (2020) iPSC-derived intestinal organoids from cystic fibrosis patients acquire CFTR activity upon TALEN-mediated repair of the p.F508del mutation. *Mol Ther Methods Clin Dev* 17:858–870

110. Sommer CA, Capilla A, Molina-Estevéz FJ et al (2018) Modeling APC mutagenesis and familial adenomatous polyposis using human iPSC cells. *PLoS One* 13:e0200657
111. Crespo M, Vilar E, Tsai S-Y et al (2017) Colonic organoids derived from human induced pluripotent stem cells for modeling colorectal cancer and drug testing. *Nat Med* 23:878–884
112. Northway WH Jr, Rosan RC, Porter DY (1967) Pulmonary disease following respirator therapy of hyaline-membrane disease. *N Engl J Med* 276:357–368
113. Liggins GC, Howie RN (1972) A controlled trial of antepartum glucocorticoid treatment for prevention of the respiratory distress syndrome in premature infants. *Pediatrics* 50:515–525
114. Morrison JC, Whybrew WD, Bucovaz ET, Schneider JM (1978) Injection of corticosteroids into mother to prevent neonatal respiratory distress syndrome. *Am J Obstet Gynecol* 131:358–366
115. Roberts D, Brown J, Medley N, Dalziel SR (2017) Antenatal corticosteroids for accelerating fetal lung maturation for women at risk of preterm birth. *Cochrane Database Syst Rev* 3:CD004454
116. Neu J (1996) Necrotizing enterocolitis: the search for a unifying pathogenic theory leading to prevention. *Pediatr Clin N Am* 43:409–432
117. Patel RM, Denning PW (2015) Intestinal microbiota and its relationship with necrotizing enterocolitis. *Pediatr Res* 78:232–238
118. Hill DR, Huang S, Tsai Y-H et al (2017) Real-time measurement of epithelial barrier permeability in human intestinal organoids. *JoVE*:e56960. <https://doi.org/10.3791/56960>
119. Zietek T, Rath E, Haller D, Daniel H (2015) Intestinal organoids for assessing nutrient transport, sensing and incretin secretion. *Sci Rep* 5:16831–16810
120. Kim K, Zhao R, Doi A et al (2011) Donor cell type can influence the epigenome and differentiation potential of human induced pluripotent stem cells. *Nat Biotechnol* 29:1117–1119
121. Lee J-H, Lee JB, Shapovalova Z et al (2014) Somatic transcriptome priming gates lineage-specific differentiation potential of human-induced pluripotent stem cell states. *Nat Commun* 5:5605
122. Kytälä A, Moraghebi R, Valensisi C et al (2016) Genetic variability overrides the impact of parental cell type and determines iPSC differentiation potential. *Stem Cell Rep* 6:200–212
123. Sullivan S, Stacey GN, Akazawa C et al (2018) Quality control guidelines for clinical-grade human induced pluripotent stem cell lines. *Regen Med* 13:859–866

Publisher's note Springer Nature remains neutral with regard to jurisdictional claims in published maps and institutional affiliations.