

Immunomodulatory and direct activities of ropeginterferon alfa-2b on cancer cells in mouse models of leukemia

Kazuki Sakatoku  | Yasuhiro Nakashima  | Joji Nagasaki | Mitsutaka Nishimoto | Asao Hirose | Mika Nakamae | Hideo Koh | Masayuki Hino | Hirohisa Nakamae

Hematology, Graduate School of Medicine, Osaka City University, Osaka, Japan

Correspondence

Yasuhiro Nakashima, Osaka City University, 1-4-3, Asahimachi, Abeno-ku, Osaka 545-8585, Japan.
Emails: yakkun414@med.osaka-cu.ac.jp; ynakashima@omu.ac.jp

Abstract

Although ropeginterferon alfa-2b has recently been clinically applied to myeloproliferative neoplasms with promising results, its antitumor mechanism has not been thoroughly investigated. Using a leukemia model developed in immunocompetent mice, we evaluated the direct cytotoxic effects and indirect effects induced by ropeginterferon alfa-2b in tumor cells. Ropiginterferon alfa-2b therapy significantly prolonged the survival of mice bearing leukemia cells and led to long-term remission in some mice. Alternatively, conventional interferon-alpha treatment slightly extended the survival and all mice died. When ropeginterferon alfa-2b was administered to interferon-alpha receptor 1-knockout mice after the development of leukemia to verify the direct effect on the tumor, the survival of these mice was slightly prolonged; nevertheless, all of them died. In vivo CD4⁺ or CD8⁺ T-cell depletion resulted in a significant loss of therapeutic efficacy in mice. These results indicate that the host adoptive immunostimulatory effect of ropeginterferon alfa-2b is the dominant mechanism through which tumor cells are suppressed. Moreover, mice in long-term remission did not develop leukemia, even after tumor rechallenge. Rejection of rechallenge tumors was canceled only when both CD4⁺ and CD8⁺ T cells were removed in vivo, which indicates that each T-cell group functions independently in immunological memory. We show that ropeginterferon alfa-2b induces excellent antitumor immunomodulation in hosts. Our finding serves in devising therapeutic strategies with ropeginterferon alfa-2b.

KEYWORDS

adoptive immunity, antitumor effector cells, immunomodulatory effect, interferon-alpha, ropeginterferon alfa-2b

Abbreviations: CTL, cytotoxic T lymphocyte; GFP, green fluorescent protein; Ifnar1, interferon-alpha receptor 1; IFN- α , interferon-alpha; IFN- γ , interferon-gamma; JAK-Stat, Janus kinase-signal transducer and activator of transcription; MFI, median fluorescence intensity; PEG-IFN, pegylated interferon-alpha; p-STAT1, phosphorylation of signal transducer and activation of transcription 1; rIFN- α , recombinant mouse interferon-alpha; ropeg, ropeginterferon alfa-2b; STAT1, signal transducer and activation of transcription 1; T_{CM}, central memory T; TCR, T-cell receptor; T_{EM}, effector memory T; T_N, naïve T; T_{SCM}, stem cell-like memory T.

This is an open access article under the terms of the [Creative Commons Attribution-NonCommercial-NoDerivs](https://creativecommons.org/licenses/by-nc-nd/4.0/) License, which permits use and distribution in any medium, provided the original work is properly cited, the use is non-commercial and no modifications or adaptations are made.

© 2022 The Authors. *Cancer Science* published by John Wiley & Sons Australia, Ltd on behalf of Japanese Cancer Association.

1 | INTRODUCTION

Interferon-alpha is a pleiotropic cytokine that was first identified as a viral replication inhibitor. Nevertheless, the IFN- α function has since been extended to cancer suppression.¹⁻³ IFN- α is now approved for the treatment of both solid and hematologic tumors.⁴⁻⁸ The underlying mechanisms of the IFN- α function in tumor suppression are currently a widely studied subject, and it has long been thought that IFN- α suppresses tumor development through its direct functions in tumor cells.^{9,10} Also, IFN- α may attenuate tumor progression by activating host immune cells.¹¹⁻¹⁴ Despite these findings, it remains unclear whether IFN- α exerts its antitumor effects through stimulation of the host immune system, by a direct effect on tumor cells, or both.¹⁵

Ropeginterferon alfa-2b (ropeg) is a monopegylated IFN- α that was developed for the treatment of myeloproliferative neoplasms. Contrary to other PEG-IFN compounds, ropeg comprises a single positional isomer resulting in an extended elimination half-life, enabling less frequent dosing (every other week or monthly during maintenance therapy), and shows promising results for the treatment of patients with polycythemia vera.¹⁶⁻¹⁸ Despite increasing clinical evidence, the mechanism by which ropeg treatment controls tumor cells remains unclear. In this study, we used an immunocompetent mouse model mimicking acute leukemia and showed its antitumor mechanism from both the direct and indirect effects of ropeg.

2 | MATERIALS AND METHODS

2.1 | Ex vivo and in vivo experiments

Mice, leukemia cell lines, flow cytometry analysis, next-generation sequencing analysis, drug reagents, and study design are described in Appendix S1. Animal experiments were approved by Osaka City University Animal Ethics Committee and performed according to the institutional guidelines of Osaka City University.

2.2 | Statistical analysis

P values were calculated using a two-tailed Student's *t* test, nonparametric Mann-Whitney *U* test, or Kruskal-Wallis test. The log-rank test was used for the analysis of survival. *P* values of <0.05 were considered statistically significant. All statistical analyses were performed using EZR (Saitama Medical Center, Jichi Medical University), which is a graphical user interface for R (The R Foundation for Statistical Computing).¹⁹

3 | RESULTS

3.1 | Ropeginterferon alfa-2b decreases the leukemia burden in vivo and leads to the long-term survival of mice

To assess the in vivo efficacy of ropeg for leukemia, we utilized BA-1, a murine B-cell leukemia cell line that shows aggressive development, leading to death with infiltration of the bone marrow, blood, and spleen after injection into normal C57BL/6 mice without prior treatment (data not shown). To investigate the overall therapeutic potential of ropeg treatment regarding leukemia, we inoculated C57BL/6 mice with BA-1 cells via tail vein injection (Figure 1A). A significant reduction in the tumor burden in the peripheral blood was observed, especially in the ropeg-treated group (Figure 1B). We next evaluated the effects of ropeg treatment on the survival of the mice. Ropeg treatment led to long-term remission in four of eight (50%) mice, whereas all mice in the rIFN- α treatment group died at approximately 40 days, which demonstrated the potential of stronger antitumor effect of ropeg in vivo in comparison with rIFN- α in leukemia treatment. Increasing the dose of rIFN- α did not contribute to prolonged survival (Figure S1). The antitumor effect of ropeg was also tested in a tumor model using EL4, a murine T-cell leukemia cell line (Figure S2A). Ropeg treatment significantly delayed tumor growth of EL4 tumors, whereas rIFN- α treatment did not prevent tumor growth (Figure S2B).

3.2 | Ropeginterferon alfa-2b increases apoptosis and cell cycle arrest of leukemic cells in a time-dependent manner

We intended to evaluate the direct cytotoxic effect of ropeg and rIFN- α on the proliferation of BA-1 cells in vitro to elucidate the mechanism of leukemia rejection. Both ropeg and rIFN- α suppressed BA-1 growth, which was more pronounced in the ropeg-treated group (Figure 2A). The same result was observed in EL4 (Figure S3).

The apoptosis of BA-1 cells was significantly increased after exposure to ropeg and rIFN- α . In terms of total cells, the ropeg group showed an increase in early- and late-apoptotic cells in a time-dependent manner, whereas the ratio of early and late apoptotic cells was most remarkable in the rIFN- α group after 24 hours (Figure 2B). Ropeg significantly increased early and late apoptotic cells in comparison with rIFN- α and control 72 hours after the start of coculture (Table 1). Regarding viable cells, ropeg induced an increase in the MFI of PE-annexin over time, whereas rIFN- α peaked at 24 hours

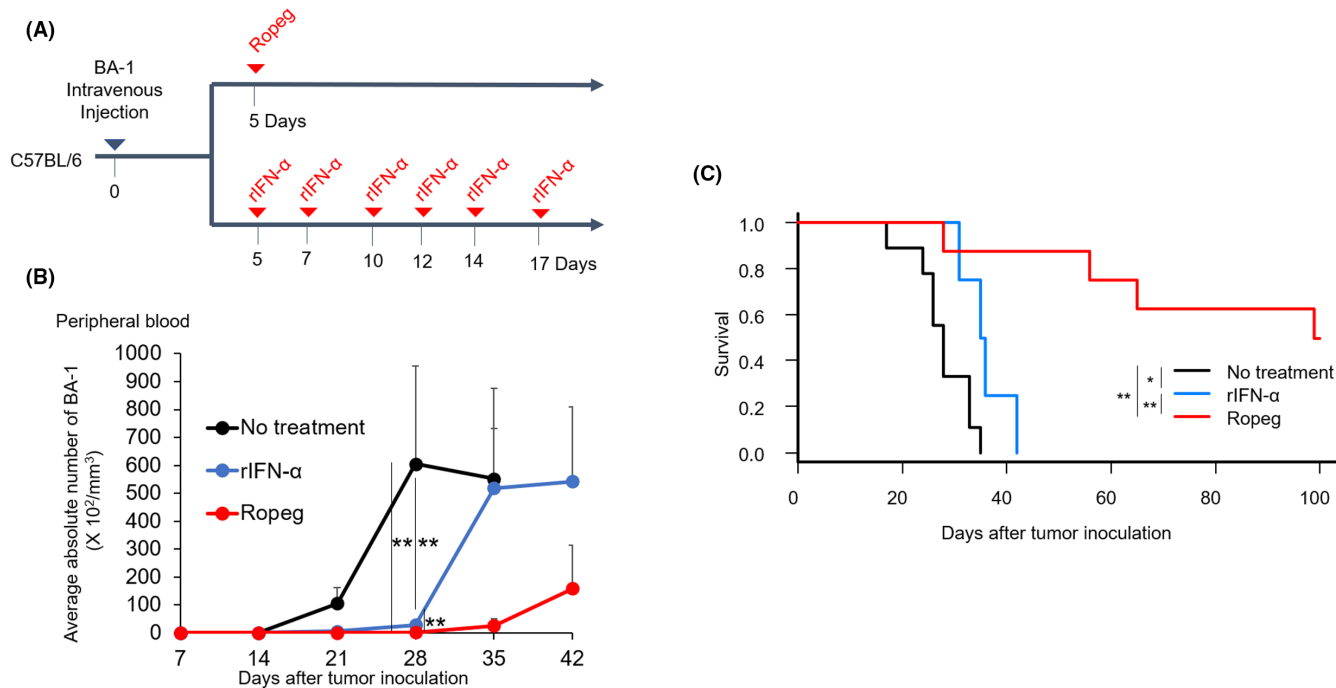


FIGURE 1 Ropeg treatment in BA-1 cell-injected mice. A, A schematic illustration of the therapy protocol for in vivo experiments. B, Single-cell suspensions of blood at 7, 14, 21, 28, 35, and 42 d after tumor inoculation were analyzed via flow cytometry to determine the fraction of GFP+ cells (BA-1 cells). Error bar indicates the mean and SE. Statistical significance was determined using Student's *t* test with comparisons indicated by brackets (***p* < 0.01). C, Survival data in C57BL/6 mice were plotted in a Kaplan-Meier survival curve, and statistical significance was calculated with the log-rank test. No treatment (*n* = 11), rIFN- α -treated (*n* = 8), and ropeg-treated C57BL/6 (*n* = 8) mice. Data were derived from at least three independent experiments (**p* < 0.05; ***p* < 0.01)

and did not increase thereafter (Figure 2C). IFN- α induces apoptosis in malignant cells via activation of caspase-3.^{20,21} We confirmed that ropeg promoted a time-dependent increase in caspase-3 expression, which was not observed with rIFN- α (Figure 2D). Additionally, cell cycle analyses were performed under the same culture conditions described in the apoptosis assay. When BA-1 cells were cocultured with ropeg or rIFN- α , the G1 phase of the cells increased (Figure 2E). The increase in the G1 phase after 72 hours was more remarkable in the ropeg group (Table 1). IFN- α has been shown to induce p21, which inhibits the active cyclin D/CDK4 complex, resulting in G1 phase arrest.²²⁻²⁴ We found that exposure to rIFN- α induces an increase in p21 expression in BA-1 cells, which peaks out at 24 hours, whereas exposure to ropeg induces an increase in its expression over time (Figure 2F).

When type I IFN binds to a receptor consisting of Ifnar, STAT1 undergoes tyrosine phosphorylation by the JAK-Stat pathway. Thus, we checked whether ropeg promoted p-STAT1. The MFI of p-STAT1 was increased via coculture with ropeg or rIFN- α . Additionally, the MFI of p-STAT1 increased in a time-dependent manner in the ropeg-treated group, which was in line with the time-dependent effects observed in the apoptosis and cell cycle assays (Figure 2G). We administered rIFN- α continuously every 24 hours in the medium culturing BA-1. Annexin expression and G1 phase ratio of the BA-1 cells peaked at 24 hours after the start of culture and did not increase over time thereafter (Figure 2H,I).

3.3 | Loss of indirect effect attenuates the antileukemic effect of ropeg in vivo

Based on the direct cytotoxic effects of ropeg for BA-1 cells confirmed in vitro, we next investigated the direct effect on leukemia cells in vivo (Figure 3A). Both ropeg and rIFN- α therapies significantly enhanced the survival of *Ifnar1*^{-/-} mice bearing BA-1 cells, in which these therapies do not act systemically. Ropeg treatment led to a survival benefit in comparison with rIFN- α treatment. Although ropeg treatment led to the long-term remission of leukemia in some immunocompetent mice, all *Ifnar1*^{-/-} mice died within 17-24 days after tumor inoculation (Figure 3B). The direct action of ropeg on EL4 cells did not inhibit tumor cell growth in *Ifnar1*^{-/-} mice (Figure S4A,B). These findings demonstrate that the immune system plays a prominent role in the ropeg-mediated antitumor effect in vivo.

3.4 | Indirect antitumor effects of ropeg significantly inhibit leukemia cell growth in vivo and lead to the long-term survival of mice

Based on these findings, we next investigated whether the tumor-suppressive effects and prolonged survival of leukemia-bearing mice, which we observed in ropeg-treated wild-type mice, could be

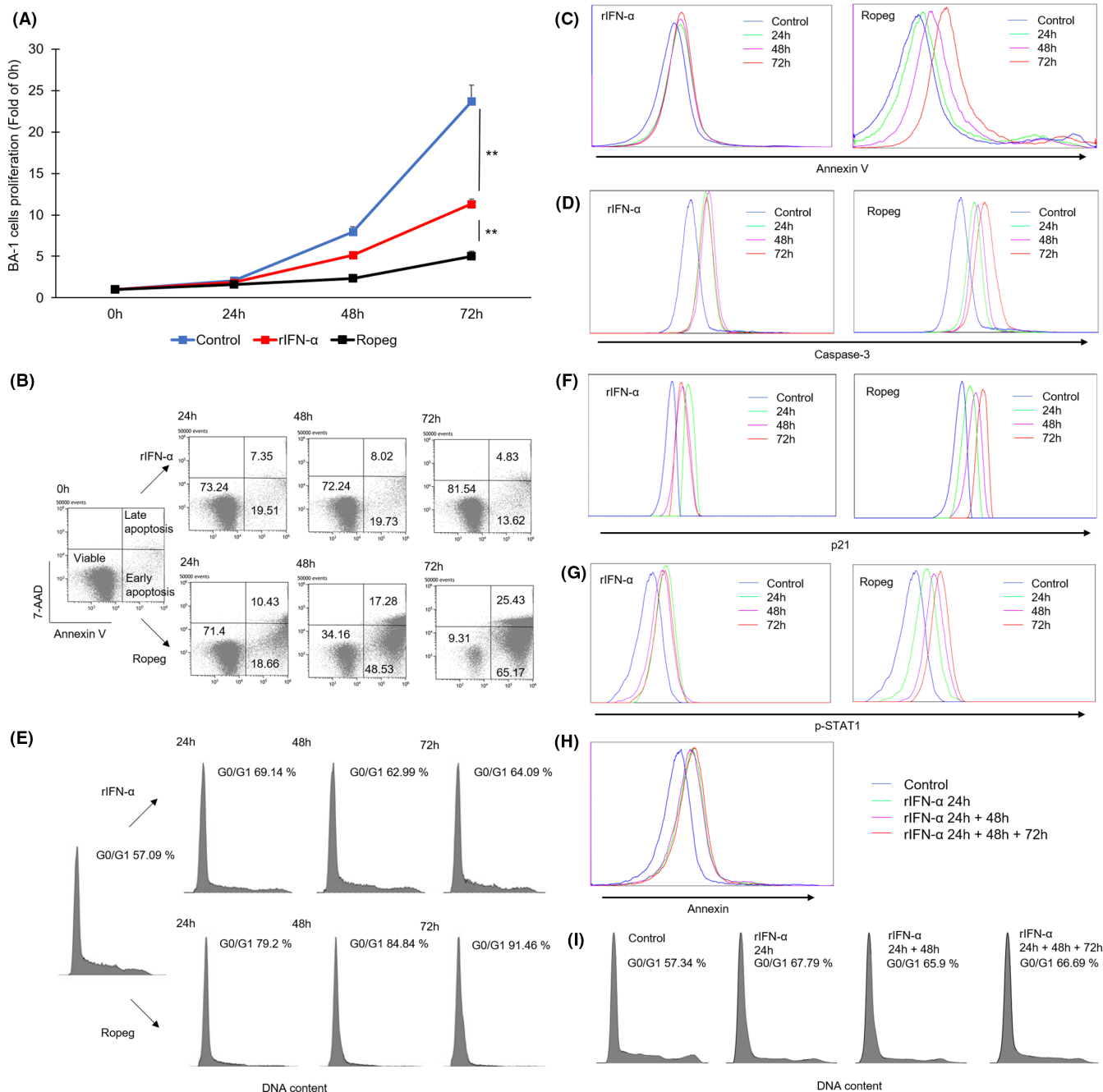


FIGURE 2 Direct effect of ropeg and rIFN- α on BA-1 cells ex vivo. This section describes the drug-induced antitumor proliferative effects of coculturing BA-1 cells with ropeg (5 μ g/ml in media) and rIFN- α (1250 μ g/ml in media) for 72 h. A, Tumor growth curves of BA-1. Error bar indicates the SE. Statistical significance was determined using Student's *t* test with comparisons indicated by brackets (***p* < 0.01). Data were derived from three independent experiments. B, Graphical representation of annexin V and 7-AAD expression of BA-1 cells after incubation with ropeg and rIFN- α . Representative histogram plots representing the expression of (C) annexin V, (D) caspase-3, (F) p21, and (G) p-STAT1 in viable BA-1 cells after incubation with ropeg and rIFN- α . (E) Representative DNA histogram plots of the cell cycle profile of BA-1 cells after incubation with ropeg and rIFN- α . G0/G1 percentages show representative data obtained from three experiments. (H) Annexin V expression in viable BA-1 after additional administration of rIFN- α (1250 U/ml every 24 h). (I) Histogram plots representing cell cycle in BA-1 cells after an additional dose of rIFN- α (1250 U/ml every 24 h). Histogram and dot plots in this section are representative based on three independent and reproducible experiments

confirmed based on indirect effect alone. To confirm this, we generated BA-1/Ifnar1^{-/-} by deleting the Ifnar1 gene using the CRISPR/Cas9 system, on which ropeg did not have a direct antitumor effect. (Figure 4A,B). The indirect antitumor effect of ropeg was evaluated by inducing BA-1/Ifnar1^{-/-} leukemia in wild-type C57BL/6 mice

(Figure 4C). Ropeg treatment significantly prolonged the survival of mice in comparison with the rIFN- α -treated and untreated groups (Figure 4D). Furthermore, ropeg treatment introduced long-term remission in four of the six (67%) treated mice, which was confirmed in ropeg-treated mice with normal BA-1. These results showed that

TABLE 1 Apoptosis and cell cycle phase distribution of BA-1 cells after coculture with rIFN- α and ropeg

	Apoptosis distribution (%)			Cell cycle phase (%)		
	Viable cells	Early apoptosis	Late apoptosis	G0/G1	S	G2/M
Control	81.3 \pm 2.0	12.0 \pm 3.7	6.7 \pm 2.9	56.1 \pm 0.5	25.2 \pm 0.6	10.3 \pm 0.4
rIFN- α 1250 U/ml	71.5 \pm 3.7	12.3 \pm 1.9	15.3 \pm 4.0	66.0 \pm 2.0 ^a	26.1 \pm 1.8 ^a	7.9 \pm 0.3 ^a
Ropeg 5 μ g/ml	31.1 \pm 11.1 ^{a,b}	31.5 \pm 18.8	36.6 \pm 5.9 ^{a,b}	86.1 \pm 2.7 ^{a,b}	10.9 \pm 1.9 ^{a,b}	3.0 \pm 0.9 ^{a,b}

Note: BA-1 cells were exposed to compounds at the indicated concentrations for 72 h before analysis was performed. The data presented correspond to the mean \pm standard error of the mean of three independent experiments. All experiments were performed at least three times with similar results. Abbreviations: rIFN- α , recombinant interferon-alpha; ropeg, ropeginterferon alfa-2b.

^a $p < 0.05$ compared with the control group.

^b $p < 0.05$ compared with the rIFN- α group.

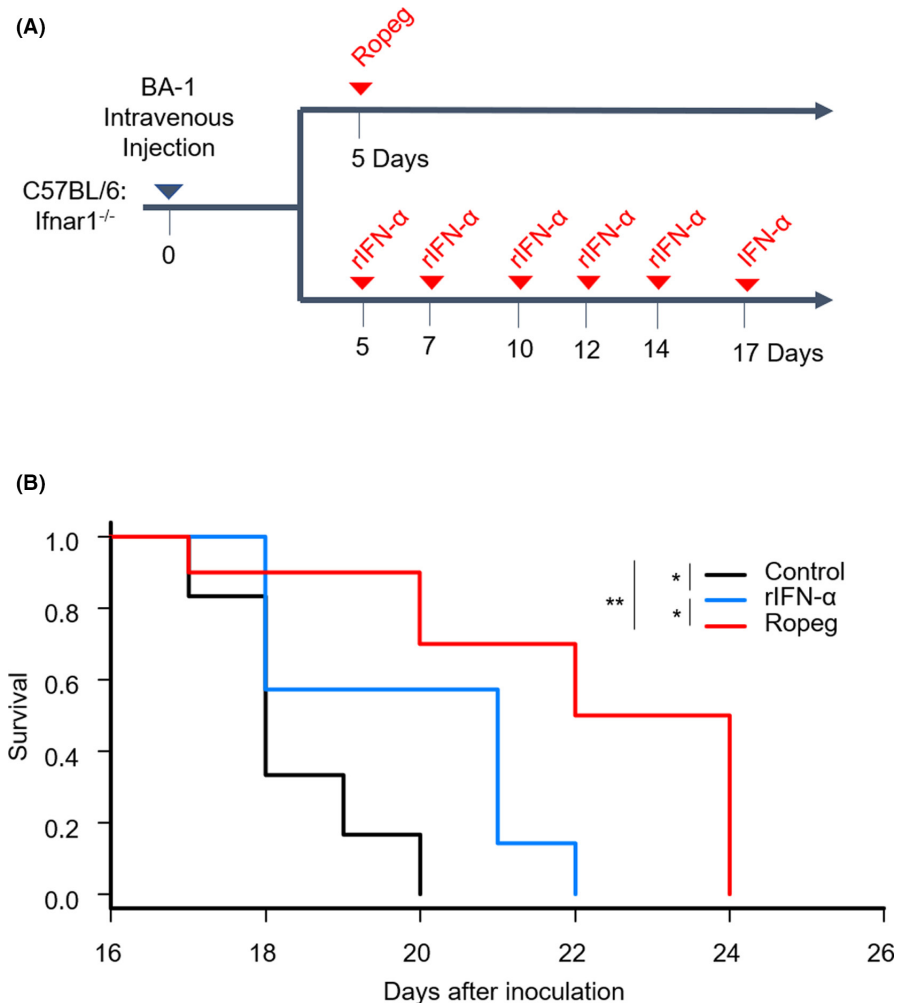


FIGURE 3 Direct antiproliferative effect of ropeg for BA-1 cells in vivo. A, BA-1 cells (1×10^5) were injected intravenously into Ifnar1^{-/-} C57BL/6 mice. B, Survival data of Ifnar1^{-/-} C57BL/6 mice were plotted in a Kaplan-Meier survival curve, and statistical significance was calculated with the log-rank test. No treatment ($n = 6$), rIFN- α -treated ($n = 7$), and ropeg-treated C57BL/6 ($n = 10$) mice. ($*p < 0.05$) Data were derived from three independent experiments

under an immunocompetent condition, the dominant factor in the prolongation of survival in ropeg-treated mice is an indirect effect, such as enhancing antitumor immune response.

3.5 | Changes in splenic lymphocytes after the administration of ropeg

These results suggested that ropeg treatment exerts a more critical antitumor effect than the conventional IFN- α due to the immunomodulation in mice. Thus, we investigated the proportion and the

absolute number of splenic lymphocytes after the administration of ropeg or rIFN- α in comparison with drug-free mice.

As shown in Figure 5A, we characterized the lymphocyte subsets after the administration of ropeg or rIFN- α . The spleen weights and the absolute number of splenocytes in the ropeg-injected group were significantly increased in comparison with the control and rIFN- α groups (Figure 5B).

Ropeg-treated mice displayed increased proportions and absolute numbers of CD19⁺ B cells and CD3⁺ T cells in comparison with the control and rIFN- α groups (Figure 5C,D). CD4⁺ and CD8⁺ T cells can be further categorized into memory and naïve phenotypes

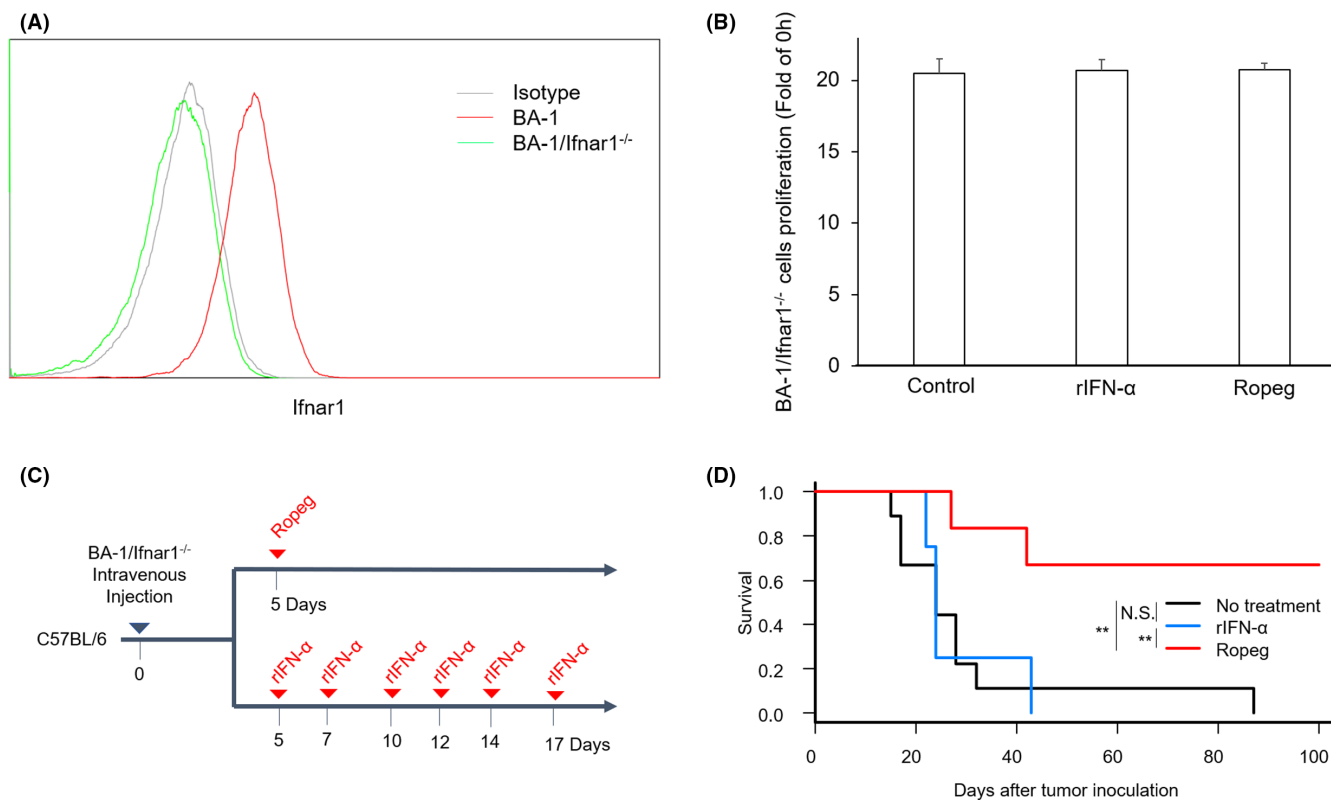


FIGURE 4 Indirect antiproliferative effect of ropeg on BA-1 cells in vivo. A, Histogramical representation of Ifnar1 in BA-1 and BA-1/Ifnar1^{-/-} cells. Histograms showed several cells per channel (vertical axis) versus Ifnar1^{-/-} (horizontal axis). B, Tumor growth of BA-1/Ifnar1^{-/-} at 72 h after incubation with ropeg (5 μg/ml in media) and rIFN-α (1250 U/ml in media). Data are derived from three independent experiments ($n = 9$ per group). Bar charts indicate the mean and SE. C, BA-1/Ifnar1^{-/-} cells (1×10^5) were injected intravenously into C57BL/6 mice. D, Survival data in C57BL/6 mice were plotted in a Kaplan-Meier survival curve, and statistical significance was calculated with the log-rank test. No treatment ($n = 9$), rIFN-α-treated ($n = 4$), and ropeg-treated C57BL/6 ($n = 6$) mice. (** $p < 0.01$) Data were derived from three independent experiments. N.S., not significant

based on the CD62L (L-selectin) and CD44 expression, with the CD44⁻CD62L⁺ population considered T_N cells, CD44⁺CD62L⁺ population considered T_{CM} cells, and the CD44⁺CD62L⁻ population considered effector and T_{EM} cells. As shown in Figure 5E,G, we observed the percentage of CD3⁺ T cells with a striking downregulation of CD62L in both CD4⁺ and CD8⁺ T-cell populations in the ropeg-treated group in comparison with the control and rIFN-α groups. The numbers of T_{EM} cells in both CD4⁺ and CD8⁺ T cells in the ropeg-treated mice significantly increased in comparison with the rIFN-α-treated and control groups, whereas the numbers of T_N cells were equivalent in each of the groups (Figure 5F,H). Ropeg significantly increased the absolute number of CD4⁺ T_{CM} cells compared with the control group, whereas it was comparable between the ropeg and rIFN-α groups. There was no significant difference in the absolute number of CD8⁺ T_{CM} cells between the ropeg group and the control or rIFN-α groups (data not shown). Recently, T_{SCM} cells have been reported as a new immune biomarker to assess long-term memory T-cell immune reconstitution.^{25,26} T_{SCM} cells have been shown to differentiate into T_{CM} and T_{EM}.²⁷ In mice, this population is identified as an Sca-1⁺CXCR3⁺ subset in T_N-appearing CD44⁻CD62L⁺ cells.^{28,29} We identified an increased proportion of T_{SCM} in the T_N fraction in both CD4⁺ and CD8⁺ T cells after ropeg administration

(Figure S5A,B). We also found that the larger percentage of both CD4⁺ and CD8⁺ cells after ropeg treatment expressed cytotoxic cytokines such as IFN-γ and perforin (Figure S6). To examine the clonality of T cells after ropeg administration, TCRβ repertoires in T cells isolated from spleens were analyzed using next-generation RNA-sequencing technology. T cells in mice after ropeg administration showed a polyclonal TCR repertoire as well as in control mice (Figure S7A,B). The Shannon-Weaver index H' of the control group and that of the ropeg-treated group were similar, indicating that T cells expanded polyclonally and maintained their diversity after ropeg treatment.

Natural killer (NK) cell maturation is a process by which lineage-committed NK cells acquire their full effector functions.³⁰ The low and high expression of CD11b divides NK cells into immature and mature subsets, respectively.³¹ The numbers of both immature (NK1.1⁺CD11b⁻) and mature (NK1.1⁺CD11b⁺) NK cells tended to increase in the ropeg-treated group. Nevertheless, there were no significant differences in each group (Figure 5I,J).

Hence, in mice, ropeg treatment increased B cells, T cells, and NK cells in the spleen. Moreover, the dominant subsets of both CD4⁺ and CD8⁺ T cells were changed from T_N cells to T_{EM} cells in ropeg-treated mice.

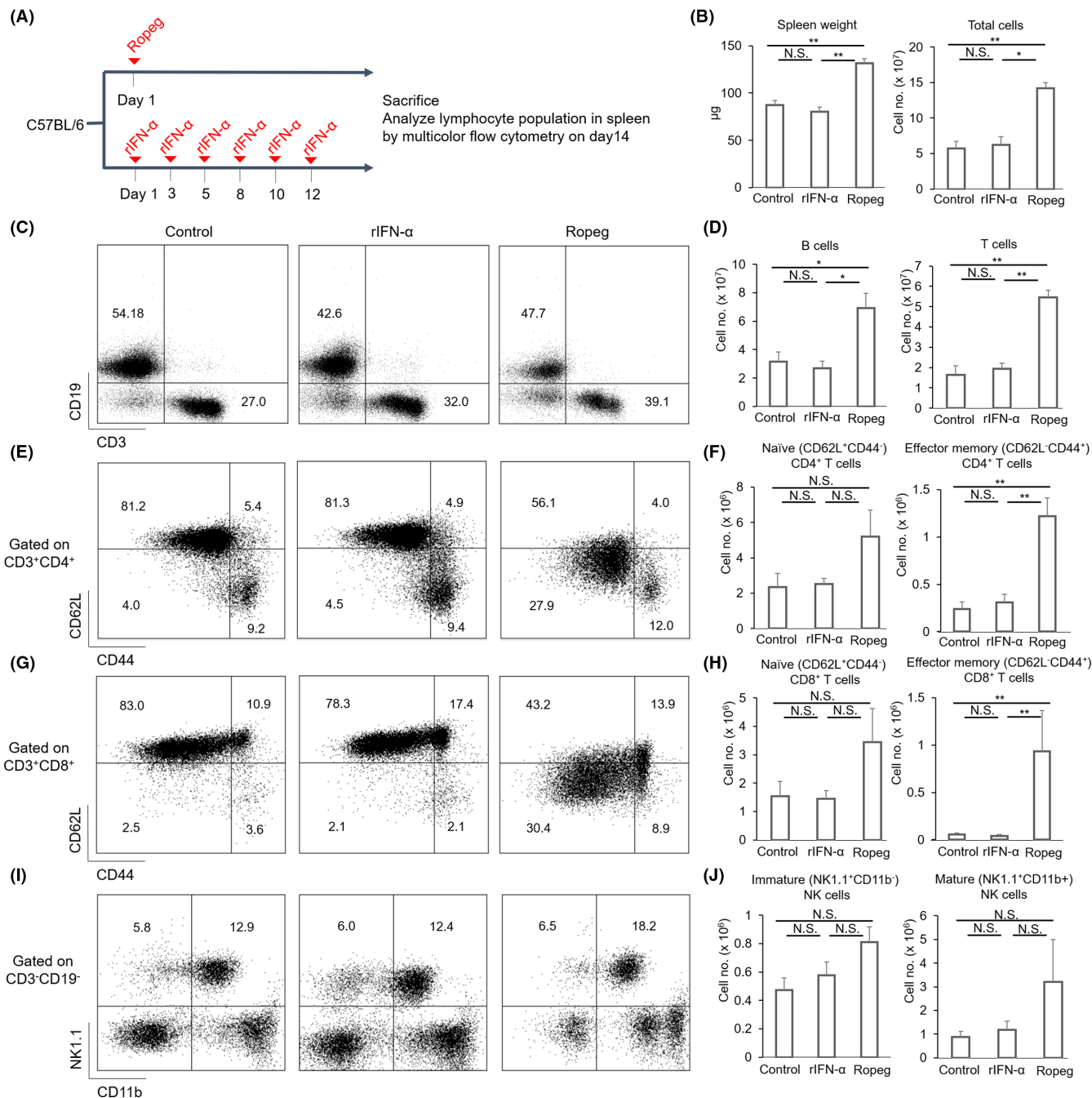


FIGURE 5 Changes in the percentage and absolute number of lymphocyte subsets in the spleen after the administration of ropeg. (A) A schematic illustration of the therapy method in the in vivo experiments. (B) Spleen weights and the total number of splenocytes. Splenocytes were analyzed for the expression of (C) CD3 and CD19 gated on available cells, CD62L and CD44 gated on each (E) CD3⁺CD4⁺ and (G) CD8⁺ T cells, and (I) NK1.1 and CD11b gated on CD3⁺CD19⁻ cells. Representative dot plots in each group. The number in each quadrant shows the mean percentage of each population. The total number of (D) B (CD19⁺) cells, T (CD3⁺) cells, naïve (CD62L⁺CD44⁻) and effector memory (CD62L⁻CD44⁺) cells in (F) CD4⁺ and (H) CD8⁺ T cells, and (J) immature and mature NK cells in each treatment group. Results are representative of three independent experiments with five mice in each group. Statistical analyses were performed using a nonparametric Mann-Whitney *U* test (* $p < 0.05$; ** $p < 0.01$)

3.6 | Depletion of either CD4⁺ or CD8⁺ T cells eliminates the antitumor effect of ropeg in vivo

Based on these findings, we then aimed to identify which immune cell types were crucial for the survival benefit that we observed

in treated wild-type mice. We therefore evaluated the efficacy of ropeg in C57BL/6 mice bearing BA-1 cells that were depleted of CD4⁺, CD8⁺ T cells, NK1.1⁺ cells, and CD19⁺ B cells, respectively (Figure 6A). CD4⁺ or CD8⁺ T-cell depletion resulted in a significant loss of therapeutic efficacy (Figure 6B). Conversely,

B-cell and NK-cell depletion did not induce a loss of therapeutic efficacy (Figure 6B). These data show that the treatment efficacy of ropeg is dependent on adaptive immunity, with CD4⁺ and CD8⁺ T cells being essential mediators of the antitumoral immune response.

3.7 | Immunological memory is induced and T cells play a central role in mice that overcome leukemia after ropeg treatment

Next, we evaluated whether long-lasting immunological memory was established in ropeg-treated mice that had survived the BA-1

challenge. Surviving mice were rechallenged with BA-1 cells at least 100 days after the first BA-1 cell inoculation and compared with tumor-inoculated control mice (Figure 7A). Surviving mice withstood the BA-1 rechallenge in all cases (Figure 7B). This suggested that mice that overcame leukemia with ropeg treatment acquired an antitumor immune memory, and we further investigated whether this was an acquired immunity specific to BA-1 cells. BA-1-surviving mice with ropeg treatment produced a greater percentage of CD4⁺ or CD8⁺ T cells producing cytotoxic cytokines compared with BA-1-naïve mice after the injection of BA-1 cells. Conversely, T cells from mice that had overcome BA-1 leukemia with ropeg treatment did not respond to intravenous infusion of EL4 cells (Figure 7C,D). These results suggest that ropeg treatment induces tumor-specific

FIGURE 6 Ropeg-induced tumor rejection is mediated by cellular immunity. A, A schematic illustration of the treatment method in the depletion experiments. Depleting antibodies were administered as described in the "Materials and Methods" section. B, Survival data in C57BL/6 mice were plotted in a Kaplan-Meier survival curve, and statistical significance was calculated with the log-rank test. CD4⁻ ($n = 6$), CD8⁻ ($n = 6$), NK1.1⁻ ($n = 5$), and CD19-depleted ($n = 5$) C57BL/6 mice were treated with ropeg on day 5 after BA-1 cell (1×10^5) inoculation. This experiment included control mice ($n = 3$) that received ropeg without antibodies. Data were derived from three independent experiments. (** $p < 0.01$)

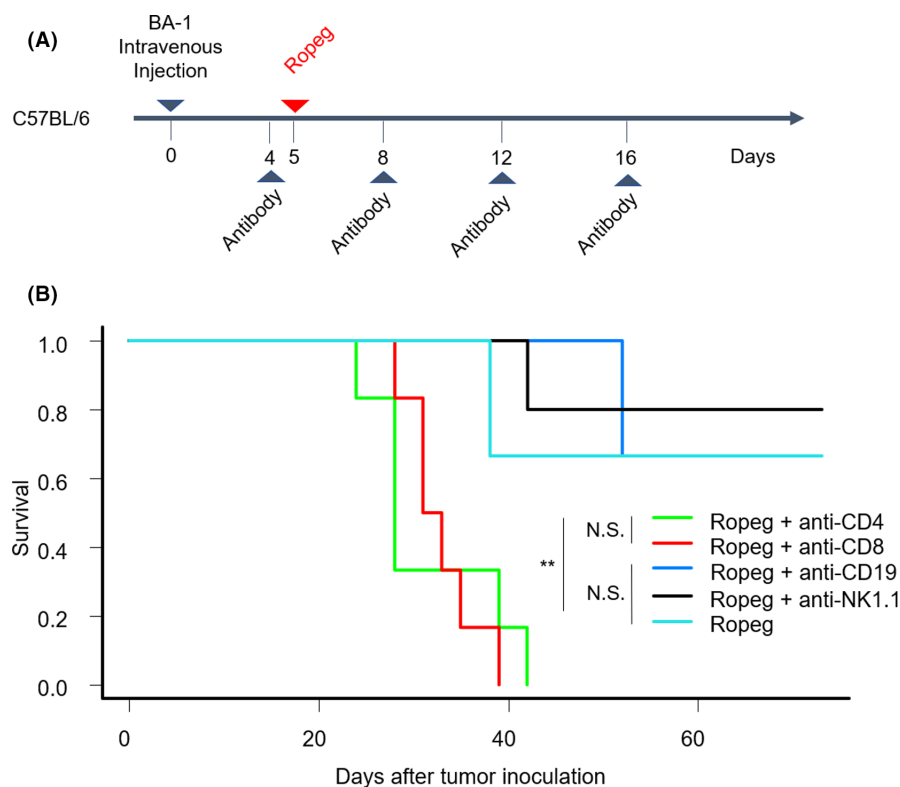
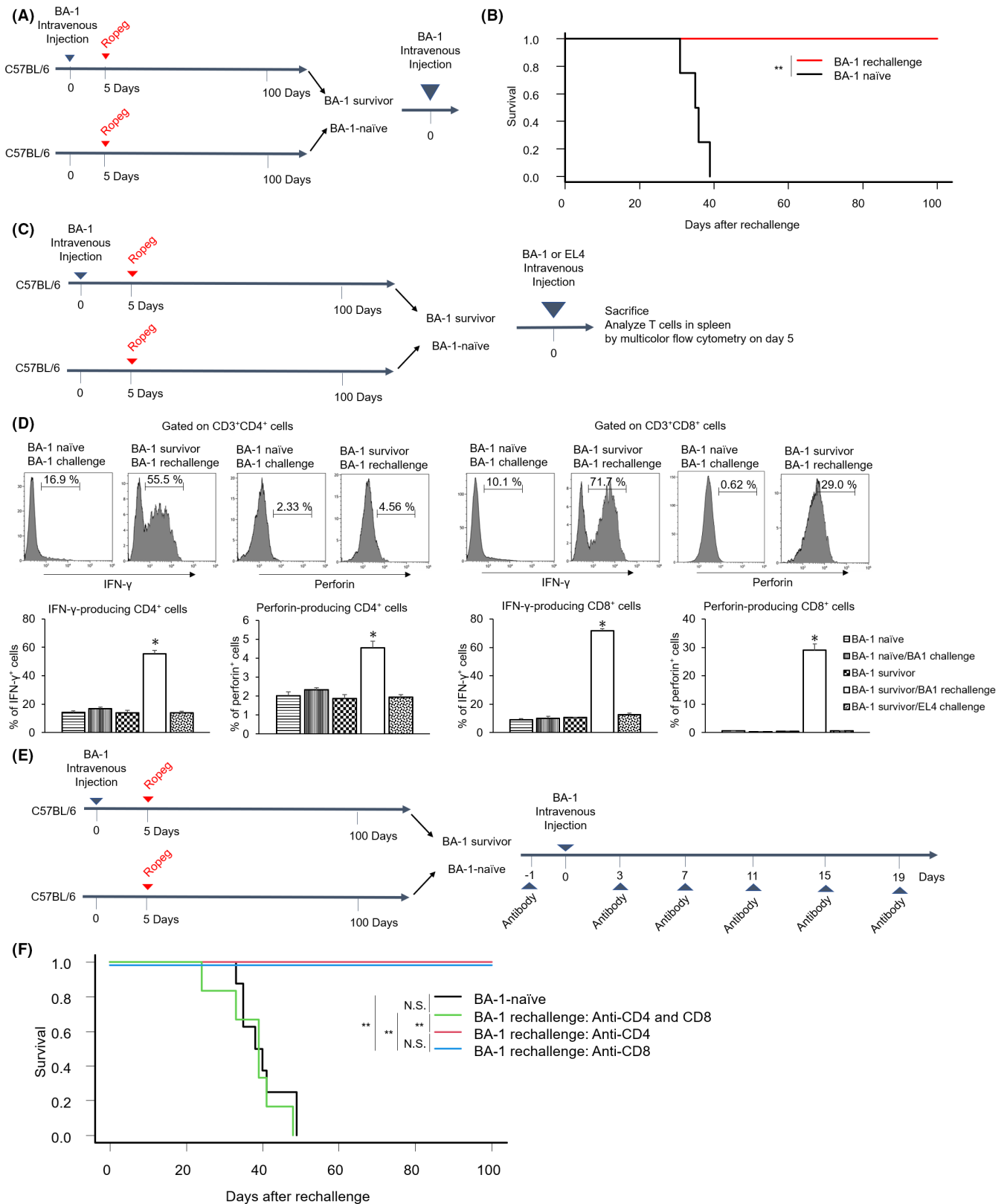


FIGURE 7 Tumor rechallenge of surviving mice with BA-1 leukemia. A, C57BL/6 mice that achieved leukemia-free survival for more than 100 d ($n = 4$; eight mice were injected intravenously with BA-1 cells, and four survived by ropeg treatment) after intravenous injection of BA-1 cells were rechallenged with BA-1 (1×10^3). No further treatment was applied. Age-matched mice that received no intravenous infusion of BA-1 cells and only ropeg administration ($n = 4$) served as controls. B, Survival data derived from three independent experiments were plotted in a Kaplan-Meier survival curve. Statistical significance was calculated using a log-rank test (** $p < 0.01$). C, To evaluate whether BA-1 leukemia-surviving mice have cytotoxic T cells specific for BA-1 cells, BA-1 cells (1×10^3) or another cell line, EL4 cells (1×10^3), were administered to BA-1 leukemia-surviving mice or age-matched BA-1-naïve mice. Five days after intravenous injection of the cell lines, spleens were collected and analyzed for cytotoxic cytokine secretion in T cells via flow cytometry. D, Representative histogram plots showing IFN- γ or perforin expression gated on CD3⁺CD4⁺ (left) and CD3⁺CD8⁺ (right) populations. The histograms show the number of cells per channel (vertical axis) versus IFN- γ or perforin (horizontal axis). Error bars show SE ($n = 5-6$ each population). Data were derived from three independent experiments. Statistical analyses were performed using a Kruskal-Wallis test followed by Mann-Whitney U test with Bonferroni correction (* indicates $p < 0.05$ for a two-arm comparison between the BA-1-rechallenge group and each of the other groups). E, A schematic illustration to evaluate T-cell involvement in immunological memory for BA-1 cells. BA-1-surviving mice were treated with depleting antibodies according to the doses described in the "Materials and Methods" section twice a week for a total of 3 wk before the rechallenge of BA-1 cells (1×10^3). F, Survival data derived from three independent experiments were plotted in a Kaplan-Meier survival curve. Statistical significance was calculated using a log-rank test (** $p < 0.01$). BA-1-naïve ($n = 8$), CD4-depleted ($n = 3$), CD8-depleted ($n = 3$), and CD4⁻ and CD8-depleted BA-1-surviving ($n = 6$) mice. Data were derived from three independent experiments



immunological memory that is overcome after ropeg administration. Based on these results, we tested whether *in vivo* T-cell depletion abolishes antitumor immunological memory in BA-1-surviving mice (Figure 7E). BA-1-surviving mice which had only CD4⁺ or CD8⁺ T cells rejected tumor cells after BA-1 cell rechallenge. Depletion of

both CD4⁺ and CD8⁺ T cells was required for loss of immunological memory (Figure 7F). These data show that each of the CD4⁺ or CD8⁺ T cells has a crucial role in antitumor immunological memory and antitumor cytotoxicity in mice that have overcome tumors after ropeg treatment.

4 | DISCUSSION

Immunotherapy using IFN- α has been shown to rely on two mechanisms, namely a direct cytotoxic or cytostatic effect on the tumor cells via the induction of apoptosis and cell cycle arrest and the induction of a cellular antitumoral immune response.^{32,33} Although ropeg, which is a novel long-acting pegylated IFN- α , has been confirmed to have superior results in myeloproliferative neoplasms, the mechanism remains unclear.^{16,18,34} In this study, we showed that ropeg provided better survival benefit in comparison with conventional IFN- α in immunocompetent mice bearing multiple tumor cell lines such as BA-1 or EL4, which proliferate in mice without prior treatment. Considering the complicated effects of ropeg on tumor cells and immune cells, the mechanistic study of immunomodulation is limited by the availability of a suitable tumor model that can separate these two effects. To our knowledge, this is the first article to examine the mechanism by which ropeg exerts excellent antitumor effects in both direct and indirect manners.

Ropeg induced a time-dependent increase in 72 hours in caspase-3 and p21 expression in leukemia cell lines, which was followed by an increase in apoptosis and cell cycle arrest over time. By contrast, the effect of rIFN- α mostly reached a maximum after 24 hours. Additional stimulation with rIFN- α every 24 hours did not lead to an increase in annexin expression or G0/G1 phase of tumor cells over time. Several reports have shown that refractoriness to restimulation of rIFN- α in tumor cell lines occurs after 24 hours from the first injection of IFN- α .^{35,36} By contrast, continuous stimulation can induce the positive feedback loop, leading to the priming effect.³⁶ Indeed, a previous study has shown that IFN- α preparation exerts direct tumoricidal effects due to the continuous delivery of IFN- α to tumor cells *in vivo*.¹⁰ Each ropeg and rIFN- α treatment significantly prolonged survival in *lfnar1*^{-/-} mice bearing BA-1 cells, in which the ropeg-treated group had a significantly longer survival than rIFN- α group. Pegylated interferon formulations, such as ropeg, are more suitable forms for acting directly on tumor cells.

Nevertheless, the absence of long-term remission of disseminated BA-1 leukemia and loss of efficacy to EL4 in *lfnar1*^{-/-} mice indicate a direct cytotoxic effect of ropeg treatment on leukemia cells contributes to a small part of the survival-prolonging effect. Wild-type mice treated with ropeg rejected *lfnar1*^{-/-} leukemic cells. These results indicate that long-term survival after the induction of remission requires an antitumor immune response after the administration of ropeg. As a factor explaining these phenomena, we confirmed a numerical increase in CD8⁺ T cells, CD4⁺ T cells, and B cells in ropeg-treated mice, which are key components of antitumor adaptive immunity.³⁷ Especially, cytotoxic CD8⁺ T cells play a pivotal role in providing effective antigen-specific immunity against tumors,^{38,39} and CD4⁺ T cells primarily mediate antitumor immunity by providing help for CD8⁺ CTL and antibody responses, as well as via the secretion of effector cytokines, such as IFN- γ perforin, and under specific contexts, via direct cytotoxicity against tumor cells.^{40,41} Ropeg caused a polyclonal increase in T cells that maintained their TCR β repertoire. Increases in T_{SCM} and T_{EM} were particularly prominent

in both CD4⁺ and CD8⁺ T-cell subsets. Of note, CD4⁺ T cells include subsets such as Treg T cells and Th17 cells, and an increase in the number of CD4⁺ T cells does not generally translate directly into increased antitumor efficacy. Nevertheless, we detected significantly increased production of IFN- γ and perforin not only in CD8⁺ T cells but also in CD4⁺ T cells after ropeg treatment. Additionally, the participation of the cellular immune response for the observed antitumor response is supported by the fact that we identified CD4⁺ and CD8⁺ T cells to mediate the treatment response, whereas B and NK cells were dispensable. The mechanism by which ropeg causes such activation of the acquired immune system and an increase in immune cells is unclear. One likely possibility is the involvement of sustained delivery of IFN- α to immune cells as well as the direct delivery of IFN- α to tumor cells. First, in T cells, continuous IFN- α stimulation promotes T-cell proliferation and differentiation into CTL.^{42,43} Second, the sustained delivery of IFN- α for macrophages stimulates the secretion of IL-12.⁴⁴ IL-12, a proinflammatory cytokine with potent tumor-suppressive activity, represents a promising candidate for combinatorial immunotherapy. IL-12 can directly support the persistent cytotoxic activity of T cells, as well as improve antigen presentation, mitigate against antigen-negative escape, and reshape endogenous immune inhibitory cells within the tumor microenvironment.⁴⁵ We also found that ropeg treatment induces an immunological memory. T cells also play a central role in the process of tumor rejection by immunological memory in tumor-surviving mice, and the presence of either CD4⁺ or CD8⁺ T cells in the mice was sufficient for tumor rejection. Some studies demonstrated that CD4⁺ T cells were capable of protecting the host against tumor challenge and that they could mediate complete tumor regressions independently of CD8⁺ T cells.⁴⁶⁻⁴⁸ T cells from BA-1-surviving mice responded excessively to BA-1 rechallenge and expressed cytotoxic cytokines, whereas they did not respond to EL4 inoculation. These results suggest that ropeg treatment induces both tumor-specific memory CD4⁺ and CD8⁺ T cells, which independently have the potential to prevent the host from tumor relapse.

In summary, ropeg treatment induces an immune cell-mediated response in preclinical cancer models, leads to long-term survival by enhancing adoptive immunity in T cells, and finally establishes an immunological memory that is protective against tumor relapse. This research will help inform future clinical research that seeks to develop the most effective strategies to implement this highly effective therapeutic agent in the treatment of cancer patients.

ACKNOWLEDGMENTS

Ropeginterferon alfa-2b (mP1101) was a gift from Pharmaessentia. The authors would like to thank Nami Osaki (Hematology, Osaka City University), Hiroyuki Kunimoto (Department of Immunology, Osaka City University), Seigo Terawaki (Laboratory of Pathobiochemistry, Osaka City University), and Daisuke Oikawa (Laboratory of Pathobiochemistry, Osaka City University) for providing technical assistance. The blood cell counts were carried out at the Research Support Platform of Osaka City University Graduate School of Medicine.

DISCLOSURE

Hirohisa Nakamae was gifted ropeginterferon alfa-2b (mP1101) from Pharmaessentia. Masayuki Hino received scholarship from Chugai Pharmaceutical. Hideo Koh received research funding from Chugai Pharmaceutical. The remaining authors declare no competing financial interests.

ETHICAL STATEMENT

Animal experiments were approved by the Osaka City University Animal Ethics Committee and performed according to the institutional guidelines of Osaka City University.

DATA AVAILABILITY STATEMENT

The data that support the findings of this study are available from the corresponding author upon reasonable request.

ORCID

Kazuki Sakatoku  <https://orcid.org/0000-0002-2206-8693>

Yasuhiro Nakashima  <https://orcid.org/0000-0003-3025-723X>

REFERENCES

- Sistigu A, Yamazaki T, Vacchelli E, et al. Cancer cell-autonomous contribution of type I interferon signaling to the efficacy of chemotherapy. *Nat Med*. 2014;20(11):1301-1309.
- Stone ML, Chiappinelli KB, Li H, et al. Epigenetic therapy activates type I interferon signaling in murine ovarian cancer to reduce immunosuppression and tumor burden. *Proc Natl Acad Sci U S A*. 2017;114(51):E10981-E10990.
- Cauwels A, Van Lint S, Garcin G, et al. A safe and highly efficient tumor-targeted type I interferon immunotherapy depends on the tumor microenvironment. *Oncoimmunology*. 2018;7(3):e1398876.
- Anguille S, Lion E, Willemen Y, Van Tendeloo VF, Berneman ZN, Smits EL. Interferon- α in acute myeloid leukemia: an old drug revisited. *Leukemia*. 2011;25(5):739-748.
- Talpaz M, Hehlmann R, Quintás-Cardama A, Mercer J, Cortes J. Re-emergence of interferon- α in the treatment of chronic myeloid leukemia. *Leukemia*. 2013;27(4):803-812.
- Fritz E, Ludwig H. Interferon-alpha treatment in multiple myeloma: meta-analysis of 30 randomised trials among 3948 patients. *Ann Oncol*. 2000;11(11):1427-1436.
- Kirkwood J. Cancer immunotherapy: the interferon-alpha experience. *Semin Oncol*. 2002;29(3 Suppl 7):18-26.
- Garbe C, Eigentler TK. Diagnosis and treatment of cutaneous melanoma: state of the art 2006. *Melanoma Res*. 2007;17(2):117-127.
- Grebenova D, Kuzelova K, Fuchs O, et al. Interferon-alpha suppresses proliferation of chronic myelogenous leukemia cells K562 by extending cell cycle S-phase without inducing apoptosis. *Blood Cells Mol Dis*. 2004;32(1):262-269.
- Benjamin R, Khwaja A, Singh N, et al. Continuous delivery of human type I interferons (alpha/beta) has significant activity against acute myeloid leukemia cells in vitro and in a xenograft model. *Blood*. 2007;109(3):1244-1247.
- Moldrem JJ, Lee PP, Wang C, et al. Evidence that specific T lymphocytes may participate in the elimination of chronic myelogenous leukemia. *Nat Med*. 2000;6(9):1018-1023.
- Ilander M, Kreutzman A, Rohon P, et al. Enlarged memory T-cell pool and enhanced Th1-type responses in chronic myeloid leukemia patients who have successfully discontinued IFN- α monotherapy. *PLoS One*. 2014;9(1):e87794.
- Hervas-Stubbs S, Perez-Gracia JL, Rouzaut A, Sanmamed MF, Le Bon A, Melero I. Direct effects of type I interferons on cells of the immune system. *Clin Cancer Res*. 2011;17(9):2619-2627.
- Lu C, Klement JD, Ibrahim ML, et al. Type I interferon suppresses tumor growth through activating the STAT3-granzyme B pathway in tumor-infiltrating cytotoxic T lymphocytes. *J Immunother Cancer*. 2019;7(1):157.
- Agarwala SS, Kirkwood JM. Potential uses of interferon alpha 2 as adjuvant therapy in cancer. *Ann Surg Oncol*. 1995;2(4):365-371.
- Gisslinger H, Klade C, Georgiev P, et al. Ropoginterferon alfa-2b versus standard therapy for polycythaemia vera (PROUD-PV and CONTINUATION-PV): a randomised, non-inferiority, phase 3 trial and its extension study. *Lancet Haematol*. 2020;7(3):e196-e208.
- Gisslinger H, Zagrijtschuk O, Buxhofer-Ausch V, et al. Ropoginterferon alfa-2b, a novel IFN α -2b, induces high response rates with low toxicity in patients with polycythemia vera. *Blood*. 2015;126(15):1762-1769.
- Barbui T, Vannucchi AM, De Stefano V, et al. Ropoginterferon alfa-2b versus phlebotomy in low-risk patients with polycythaemia vera (Low-PV study): a multicentre, randomised phase 2 trial. *Lancet Haematol*. 2021;8(3):e175-e184.
- Kanda Y. Investigation of the freely available easy-to-use software 'EZ' for medical statistics. *Bone Marrow Transplant*. 2013;48(3):452-458.
- Shi WY, Cao C, Liu L. Interferon alpha induces the apoptosis of cervical cancer HeLa cells by activating both the intrinsic mitochondrial pathway and endoplasmic reticulum stress-induced pathway. *Int J Mol Sci*. 2016;17(11):1832.
- Thyrell L, Erickson S, Zhivotovsky B, et al. Mechanisms of Interferon-alpha induced apoptosis in malignant cells. *Oncogene*. 2002;21(8):1251-1262.
- Harper JW, Adami GR, Wei N, Keyomarsi K, Elledge SJ. The p21 Cdk-interacting protein Cip1 is a potent inhibitor of G1 cyclin-dependent kinases. *Cell*. 1993;75(4):805-816.
- Katayama T, Nakanishi K, Nishihara H, et al. Type I interferon prolongs cell cycle progression via p21WAF1/CIP1 induction in human colon cancer cells. *Int J Oncol*. 2007;31(3):613-620.
- Hobeika AC, Subramaniam PS, Johnson HM. IFN α induces the expression of the cyclin-dependent kinase inhibitor p21 in human prostate cancer cells. *Oncogene*. 1997;14(10):1165-1170.
- Cieri N, Oliveira G, Greco R, et al. Generation of human memory stem T cells after haploidentical T-replete hematopoietic stem cell transplantation. *Blood*. 2015;125(18):2865-2874.
- Roberto A, Castagna L, Zanon V, et al. Role of naive-derived T memory stem cells in T-cell reconstitution following allogeneic transplantation. *Blood*. 2015;125(18):2855-2864.
- Xu L, Zhang Y, Luo G, Li Y. The roles of stem cell memory T cells in hematological malignancies. *J Hematol Oncol*. 2015;8:113.
- Gattinoni L, Lugli E, Ji Y, et al. A human memory T cell subset with stem cell-like properties. *Nat Med*. 2011;17(10):1290-1297.
- Zhang Y, Joe G, Hexner E, Zhu J, Emerson SG. Host-reactive CD8+ memory stem cells in graft-versus-host disease. *Nat Med*. 2005;11(12):1299-1305.
- Goh W, Huntington ND. Regulation of murine natural killer cell development. *Front Immunol*. 2017;8:130.
- Kim S, Iizuka K, Kang H-S, et al. In vivo developmental stages in murine natural killer cell maturation. *Nat Immunol*. 2002;3(6):523-528.
- Selleri C, Sato T, Del Vecchio L, et al. Involvement of Fas-mediated apoptosis in the inhibitory effects of interferon-alpha in chronic myelogenous leukemia. *Blood*. 1997;89(3):957-964.
- Yanagisawa K, Yamauchi H, Kaneko M, Kohno H, Hasegawa H, Fujita S. Suppression of cell proliferation and the expression of a bcr-abl fusion gene and apoptotic cell death in a new human chronic myelogenous leukemia cell line, KT-1, by interferon-alpha. *Blood*. 1998;91(2):641-648.

34. Gisslinger H, Zagrijtschuk O, Buxhofer-Ausch V, et al. Ropeginterferon alfa-2b, a novel IFN α -2b, induces high response rates with low toxicity in patients with polycythemia vera. *Blood*. 2015;126(15):1762-1769.
35. Sarasin-Filipowicz M, Wang X, Yan M, et al. Alpha interferon induces long-lasting refractoriness of JAK-STAT signaling in the mouse liver through induction of USP18/UBP43. *Mol Cell Biol*. 2009;29(17):4841-4851.
36. Mudla A, Jiang Y, Arimoto K-I, et al. Cell-cycle-gated feedback control mediates desensitization to interferon stimulation. *Elife*. 2020;9:e58825.
37. Lee HG, Cho MZ, Choi JM. Bystander CD4(+) T cells: crossroads between innate and adaptive immunity. *Exp Mol Med*. 2020;52(8):1255-1263.
38. Gismondi A, Stabile H, Nisti P, Santoni A. Effector functions of natural killer cell subsets in the control of hematological malignancies. *Front Immunol*. 2015;6:567.
39. Menares E, Gálvez-Cancino F, Cáceres-Morgado P, et al. Tissue-resident memory CD8(+) T cells amplify anti-tumor immunity by triggering antigen spreading through dendritic cells. *Nat Commun*. 2019;10(1):4401.
40. Tay RE, Richardson EK, Toh HC. Revisiting the role of CD4(+) T cells in cancer immunotherapy-new insights into old paradigms. *Cancer Gene Ther*. 2021;28(1-2):5-17.
41. Fu J, Zhang Z, Zhou L, et al. Impairment of CD4+ cytotoxic T cells predicts poor survival and high recurrence rates in patients with hepatocellular carcinoma. *Hepatology*. 2013;58(1):139-149.
42. Di Scala M, Gil-Farina I, Vanrell L, et al. Chronic exposure to IFN α drives medullar lymphopoiesis towards T-cell differentiation in mice. *Haematologica*. 2015;100(8):1014-1022.
43. Murphy BL, Anderson GS, Bowles R, Cox RS. Planning for disaster resilience in rural, remote, and coastal communities: moving from thought to action. *J Emerg Manag*. 2014;12(2):105-120.
44. Gough DJ, Messina NL, Clarke CJ, Johnstone RW, Levy DE. Constitutive type I interferon modulates homeostatic balance through tonic signaling. *Immunity*. 2012;36(2):166-174.
45. Agliardi G, Liuzzi AR, Hotblack A, et al. Intratumoral IL-12 delivery empowers CAR-T cell immunotherapy in a pre-clinical model of glioblastoma. *Nat Commun*. 2021;12(1):444.
46. Corthay A, Skovseth DK, Lundin KU, et al. Primary antitumor immune response mediated by CD4+ T cells. *Immunity*. 2005;22(3):371-383.
47. Mumberg D, Monach PA, Wanderling S, et al. CD4(+) T cells eliminate MHC class II-negative cancer cells in vivo by indirect effects of IFN-gamma. *Proc Natl Acad Sci U S A*. 1999;96(15):8633-8638.
48. Perez-Diez A, Joncker NT, Choi K, et al. CD4 cells can be more efficient at tumor rejection than CD8 cells. *Blood*. 2007;109(12):5346-5354.

SUPPORTING INFORMATION

Additional supporting information may be found in the online version of the article at the publisher's website.

How to cite this article: Sakatoku K, Nakashima Y, Nagasaki J, et al. Immunomodulatory and direct activities of ropeginterferon alfa-2b on cancer cells in mouse models of leukemia. *Cancer Sci*. 2022;113:2246–2257. doi:[10.1111/cas.15376](https://doi.org/10.1111/cas.15376)