

## Correction

Dimeric Transmembrane Orientations  
of APP/C99 Regulate  $\gamma$ -Secretase Processing  
Line Impacting Signaling and Oligomerization

Florian Perrin, Nicolas Papadopoulos, Nuria Suelves, Rémi Opsomer,  
Devkee M. Vadukul, Céline Vrancx, Steven O. Smith, Didier Vertommen,  
Pascal Kienlen-Campard,\* and Stefan N. Constantinescu\*

\*Correspondence:  
[pascal.kienlen-campard@uclouvain.be](mailto:pascal.kienlen-campard@uclouvain.be) (P.K.-C.),  
[Stefan.Constantinescu@bru.lir.org](mailto:Stefan.Constantinescu@bru.lir.org) (S.N.C.)  
<https://doi.org/10.1016/j.isci.2021.102057>

(iScience 23, 101887-1–101887-20; December 18, 2020)

In Figure 6 of the originally published version of this article, the authors inadvertently left the wording “Didier” rather than replacing it with the actual numerical values. The authors have now added the relative numerical values that replace the word “Didier” in Figure 6. The authors sincerely apologize for this oversight.



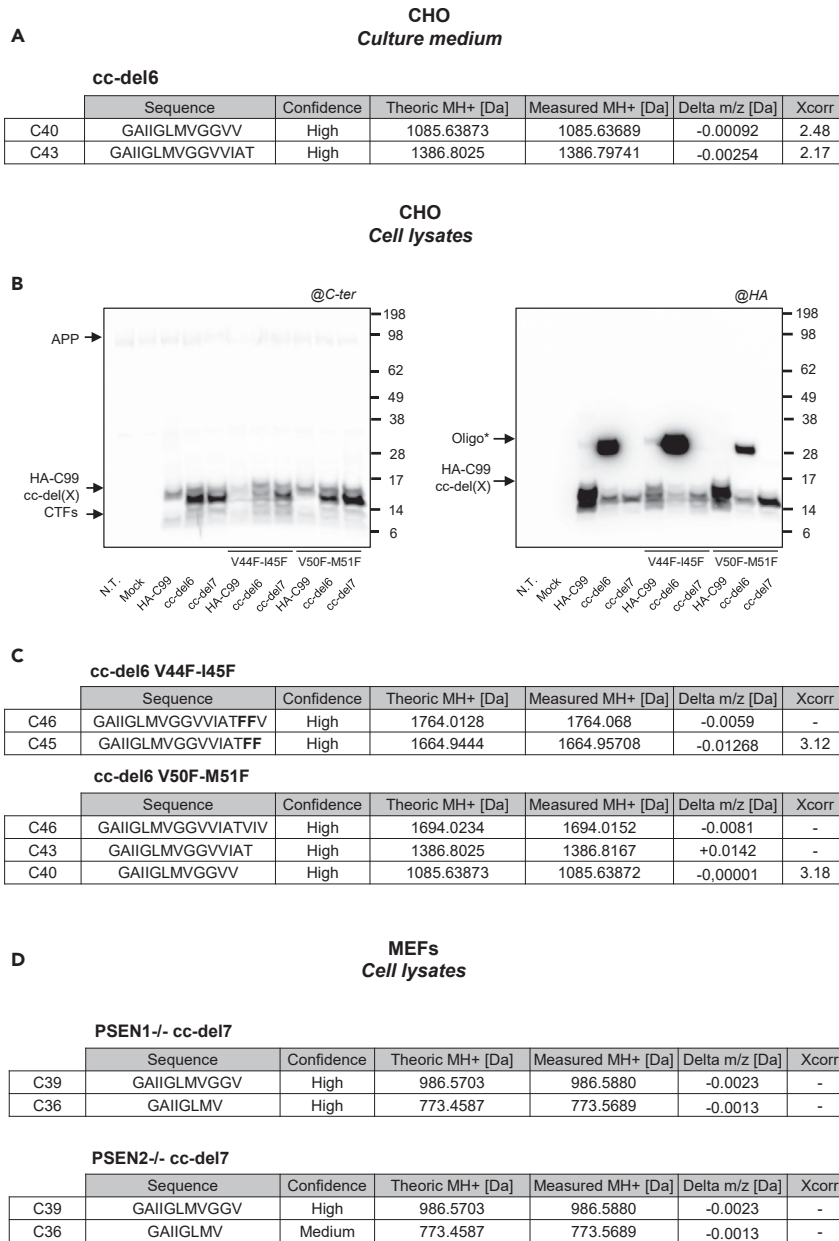


Figure 6. Processing Lines Favored by cc-del6 and cc-del7 Orientations (corrected)

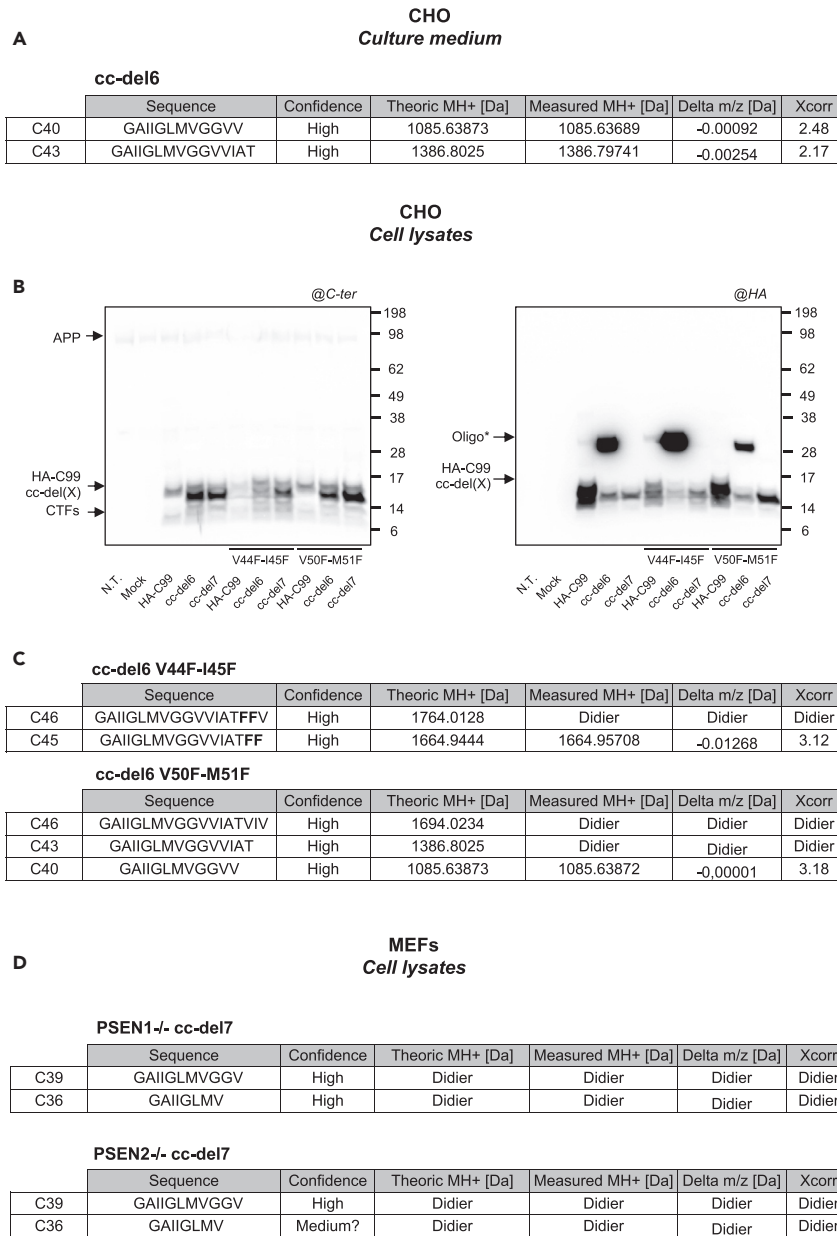


Figure 6. Processing Lines Favored by cc-del6 and cc-del7 Orientations (original)