

# S100A4 (Mts1) gene overexpression is associated with invasion and metastasis of papillary thyroid carcinoma

M Zou<sup>1</sup>, RS Al-Baradie<sup>2</sup>, H Al-Hindi<sup>3</sup>, NR Farid<sup>4</sup> and Y Shi<sup>\*,1</sup>

<sup>1</sup>Department of Genetics, King Faisal Specialist Hospital and Research Center, PO Box 3354, Riyadh 11211, Saudi Arabia; <sup>2</sup>Department of Biological and Medical Research, King Faisal Specialist Hospital and Research Center, PO Box 3354, Riyadh 11211, Saudi Arabia; <sup>3</sup>Department of Pathology, King Faisal Specialist Hospital and Research Center, PO Box 3354, Riyadh 11211, Saudi Arabia; <sup>4</sup>Osancor Biotech Inc., Watford, Herts WD17 3BY, UK

Tumour cell invasion and metastasis are the hallmark of malignant neoplasm. S100A4 is a member of small calcium-binding protein family and is involved in the cell proliferation and cancer progression. S100A4 is capable of inducing metastasis in animal models and is associated with aggressive phenotype of human tumours. We previously identified S100A4 as a candidate gene involved in anaplastic thyroid cancer metastasis by microarray analysis. To further determine whether S100A4 overexpression is associated with thyroid tumour invasion and metastasis, in the present study, we examined S100A4 gene expression in six benign multinodular goitres (MNG) and 28 matched samples of adjacent normal thyroid tissue (N), primary (T) and metastatic (M) papillary thyroid carcinomas (PTC) by immunohistochemistry and real-time reverse transcription–polymerase chain reaction (RT-PCR) analysis. This gave us the advantage of directly comparing levels of S100A4 expression within the same genetic background. Using immunohistochemistry, we found that high levels of S100A4 were detected in 24 of 28 (86%) PTC specimens and their local regional lymph node or distant metastases. No S100A4 staining was observed in normal thyroid tissues and simple MNG. However, in MNG coexistent with PTC, moderate focal staining could be found in 11 of 15 MNG adjacent to PTC. The S100A4 was stained more intensely in invading fronts than in central portions of both T and M. Real-time RT–PCR analysis of primary tumours and their matched lymph node metastasis demonstrated that significantly higher S100A4 transcripts were present in metastatic tumours as compared to the primary tumours ( $P < 0.01$ ). These data suggest that overexpression of S100A4 is associated with thyroid tumour invasion and metastasis and it may be a potential target for therapeutic intervention.

*British Journal of Cancer* (2005) **93**, 1277–1284. doi:10.1038/sj.bjc.6602856 www.bjcancer.com

Published online 1 November 2005

© 2005 Cancer Research UK

**Keywords:** gene expression; thyroid neoplasm; metastasis; mts1 protein; S100A4

Thyroid cancers of follicular cell origin are the most common endocrine malignancies (Kinder, 2003; Sherman, 2003). Although the survival rate of patients with well-differentiated thyroid cancer exceeds the rate for most other cancers, the development of metastasis continues to be the most significant cause in thyroid cancer mortality (Mazzaferrri, 1999; Sherman, 2003). Multiple pathogenic steps are involved in tumour invasion and metastases. These include the proliferation and detachment of tumour cells from the primary neoplasm, invasion of the surrounding extracellular matrix, angiogenesis, vascular or lymphatic dissemination, and eventually, homing of the tumour cells and proliferation at the new sites (Woodhouse *et al*, 1997; Hanahan and Weinberg, 2000; Liotta and Kohn, 2001). Identification of genes involved in this process will enable us to target them for future diagnosis or therapeutic intervention.

The S100A4 has recently emerged as an important protein with the capacity to promote invasion and metastasis of many human neoplasms (Barracough, 1998; Mazzucchelli, 2002; Taylor *et al*, 2002; Cho *et al*, 2003; Lee *et al*, 2004; Moriyama-Kita *et al*, 2004).

The human S100A4 gene, located on 1q21 (Schafer *et al*, 1995), encodes an acidic 101 amino-acid protein with two EF-hand motifs. These motifs consist of a consensus sequence of 12 amino acids capable of binding  $Ca^{2+}$  with high affinity and specificity (Donato, 2001; Heizmann *et al*, 2002). S100A4 is member of S100 calcium-binding proteins that regulate intracellular processes such as cell growth, motility, cell cycle, transcription and differentiation. In all, 20 members of S100 protein family have been identified so far, and altogether, S100 proteins represent the largest subgroup in the EF-hand  $Ca^{2+}$ -binding protein family (Heizmann *et al*, 2002). S100 proteins have received increasing attention due to their close association with several human diseases including cardiomyopathy (Most *et al*, 2001, 2003; Du *et al*, 2002), neurodegenerative disorders (Heizmann, 1999; Hoyaux *et al*, 2000), neuroprotection (Ahlemeyer *et al*, 2000; Pedersen *et al*, 2004), and cancer (Lee *et al*, 2004; Lin *et al*, 2004). These proteins have also been shown to be valuable markers in the diagnosis and management of these diseases and are considered to have a potential as drug targets to improve therapies (Kiewitz *et al*, 2000; Diederichs *et al*, 2004; Harpio and Einarsson, 2004; Rehman *et al*, 2004).

We have previously demonstrated by microarray analysis that S100A4 was highly expressed in anaplastic thyroid carcinoma cell line with high metastatic potential (ARO/met2) as compared to its parental cell line ARO and found that S100A4 overexpression was

\*Correspondence: Dr Y Shi; E-mail: yufei@kfshrc.edu.sa

Received 1 June 2005; revised 20 September 2005; accepted 21 September 2005; published online 1 November 2005

associated with advanced disease stage (Zou *et al*, 2004). Presently, little is known about the potential role of S100A4 in thyroid tumour invasion and metastasis. To this end, we examined S100A4 gene expression in 6 benign multinodular goitres (MNG) and 28 matched samples of adjacent normal thyroid tissue (N), primary (T) and metastatic (M) papillary thyroid carcinomas (PTC) by immunohistochemistry and real-time RT-PCR analysis. The results suggest that overexpression of S100A4 may play an important role in thyroid tumour invasion and metastasis.

## MATERIALS AND METHODS

### Thyroid tumour specimens

Fresh human tumour tissues with matched normal thyroid tissue and lymph node metastasis were obtained from 10 patients at surgery, and were immediately frozen in liquid nitrogen and stored at  $-70^{\circ}\text{C}$  until processed. A pathologist confirmed that tissues from lymph node metastases were comprised by at least 80% of tumour tissue. A series of six benign MNG, 28 PTC with matched local regional lymph node or distant metastases (25 with lymph node metastasis and three with nose, lung, or brain distant metastasis, respectively) were selected solely on the basis of tissue availability for immunohistochemistry analysis. Among the 28 PTC samples, 24 are classic PTC, one tall cell variant and two follicular variant of PTC. The institutional review board approved the research project.

### Immunohistochemistry analysis

A representative formalin-fixed paraffin-embedded tissue block was chosen from the pathology archives for each of the 28 PTC and six MNG selected for immunostaining. Normal thyroid tissues were also contained in these tissue blocks. Sections ( $4\ \mu\text{m}$ ) mounted on poly-L-lysine-coated slide were incubated for 30 min at  $60^{\circ}\text{C}$ , deparaffinised by standard methods, and placed in 0.05 M Tris-HCl buffer, pH 7.2. Antigen retrieval was performed for 20 min in 10 mM sodium citrate buffer (pH 6) heated at  $95^{\circ}\text{C}$  in a steamer, followed by cooling for 20 min. After blocking endogenous peroxidase activity with 0.3% aqueous hydrogen peroxide for 5 min, the primary polyclonal rabbit anti-S100A4 antibody (DAKO, Carpinteria, CA, USA) was incubated with the sections at a final dilution of  $2\ \mu\text{g}\ \text{ml}^{-1}$  for 30 min. In immunoblotting analysis using recombinant S100A1, S100A2, S100A4, S100A6, and S100B, the antibody recognised only S100A4. No crossreaction with the other S100 proteins was observed. For each case, a control slide was incubated with Tris-HCl buffer substituted for the primary antibody. DAKO LSAB+ kit, HRP was used for the detection of the immunostaining. The sections were counterstained with Mayer's haematoxylin. The distribution of immunolabelling was determined from a minimum of three representative high-power ( $\times 400$ ) fields and categorised into three groups: 0%, negative; 1–25%, focal; and 26–100%, diffuse.

### Quantitative real-time RT-PCR analysis

Total RNAs from normal thyroid, thyroid tumour, and lymph node metastasis were extracted by guanidinium thiocyanate-phenol-chloroform method as described previously (Shi *et al*, 1999). The integrity of RNA was verified by denaturing gel electrophoresis. Of total RNA,  $2\ \mu\text{g}$  were reverse-transcribed using Promega reverse transcription system (Promega, Madison, WI, USA). LightCycler DNA Master SYBR Green 1 kit was used for quantitative real-time PCR analysis according to the manufacturer's protocols (Roche, Mannheim, Germany). The cDNA mix was diluted 10-fold and  $2\ \mu\text{l}$  of the dilution were used for real-time PCR analysis. PCR primers for 440 bp S100A4 cDNA fragment were 5'-TCTTTCTGGTTTGATCCTG-3' (sense) and

5'-GCATCAAGCACGTGTCTGAA-3' (antisense). The sense primer spans over the intron 1 (938 bp) so that the contaminating genomic DNA would not be amplified as the expected 440 bp cDNA fragment. The mRNA level of housekeeping gene glyceraldehyde-3-phosphate dehydrogenase (GAPDH) was used as an internal control and a 300 bp PCR product was amplified using the following two primers: 5'-ACAGTCAGCCGCATCTTCTT-3' (sense) and 5'-TTGATTTTGGAGGGATCTCG-3' (antisense). The PCR conditions are  $95^{\circ}\text{C}$  for 30 s followed by 40 cycles of amplification ( $95^{\circ}\text{C}$  for 10 s,  $48^{\circ}\text{C}$  for 5 s, and  $72^{\circ}\text{C}$  for 10 s). The resulting concentration of S100A4 PCR products were normalised by comparison with GAPDH and was used to determine the mRNA level of S100A4 among thyroid tumour specimens.

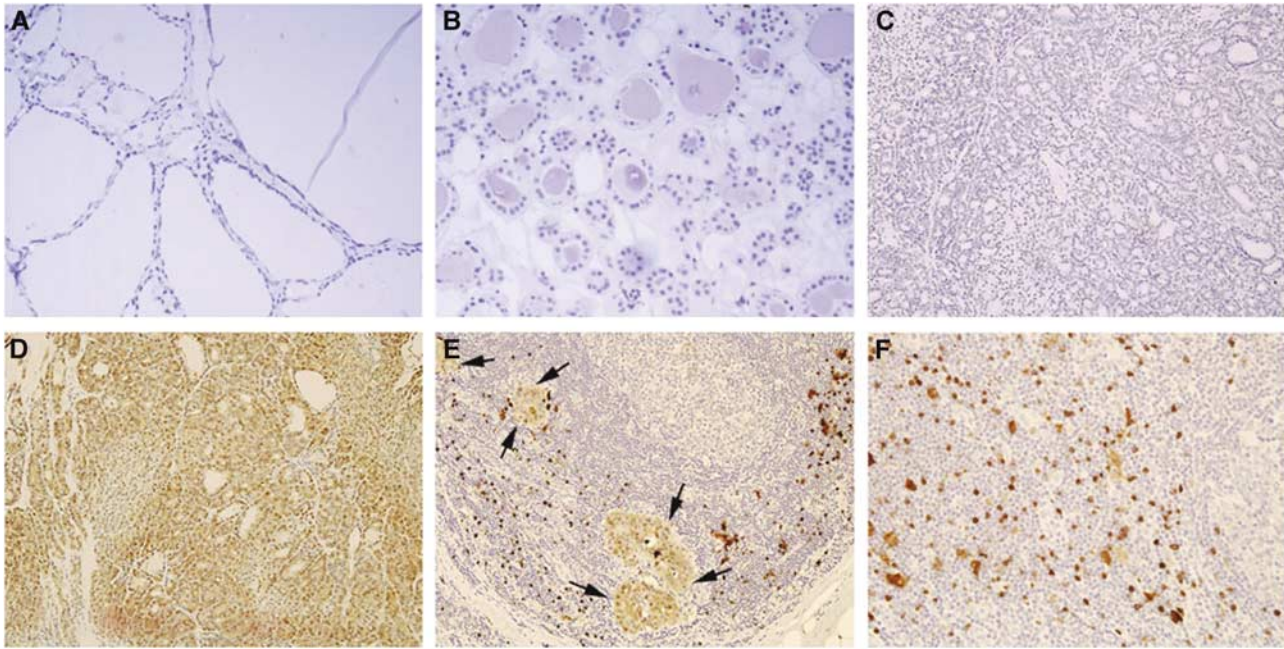
### Statistical analysis

The significant difference of S100A4 gene expression between specimen groups was carried out using the unpaired Student's *t*-test. Differences were considered statistically significant when the *P*-value was  $<0.05$ .

## RESULTS

### Immunohistochemical analysis of S100A4 expression in papillary thyroid cancer specimens

We demonstrated previously the S100A4 overexpression in advanced stage of thyroid carcinomas by Northern blot and real-time RT-PCR analysis. To examine the expression of S100A4 at the cellular level, we performed immunohistochemical analyses using histochemical preparations of formalin-fixed paraffin-embedded surgical specimens. Normal thyroid follicular cells were not stained with the S100A4 antibody (Figure 1A). No immunostaining was found in samples incubated with the secondary antibodies in the absence of primary antibodies (Figure 1C). Strong immunostaining was present in some lymphocytes, dendritic cells, and fibroblast-like reactive stroma cells in the thyroid tissues and lymph nodes usually surrounding the germinal centres (Figure 1E and F), which served as an internal positive control as previously reported (Rudland *et al*, 2000; Rosty *et al*, 2002). As shown in Table 1, S100A4 immunostaining was detected in 24 out of 28 (86%) PTC specimens: 21 with diffuse staining (staining was present in more than 25% of tumour cells) and three with focal staining (staining was present in  $<25\%$  of tumour cells). In these S100A4-positive PTC samples, stronger staining was often observed at the tumour-invading front (Figure 2B and E) as compared to the central region (Figure 2A and D). In general, metastatic PTC samples had stronger staining (Figure 2C and F) when compared with their matched primary tumours (Figure 2A and D). There are two cases where positive staining was found in the metastatic lymph nodes and negative staining in the primary tumours. Therefore, 26 metastatic PTCs were S100A4 positive. We next compared the intensity of S100A4 staining between primary and metastatic PTCs. In all, 17 out of 24 (71%) metastatic PTCs were found to have stronger immunostaining than their matched primary PTC samples: 14 with local regional lymph node metastasis and three with distant metastases (one metastasised to the nose 8 years after treatment, and the other two metastasised to the lung and brain frontal lobe, respectively at the time of diagnosis) (Figure 3). Equal intensity of staining was found in the remaining seven metastatic tumours as compared to the primary tumours. S100A4 staining was mainly cytoplasmic, heterogeneous in some tumours with tendency to more intense staining in invading fronts than in central portions of the tumour samples. Striking nuclear staining was found in five tumour samples: three with distant metastasis to nose, lung or brain frontal lobe (TNM stage IV), and the other two with stage III tumours, indicating that



**Figure 1** S100A4 immunostaining of tissues from normal thyroid, benign multinodular goitre, primary papillary thyroid carcinoma, and its lymph node metastasis. Negative staining in both normal thyroid (**A**,  $\times 100$ ) and multinodular goitre (**B**,  $\times 100$ ); negative staining of papillary thyroid carcinoma with a secondary anti-rabbit antibody only (**C**,  $\times 100$ ) and positive staining of the same tissue when S100A4 antibody was added (**D**,  $\times 100$ ); focal lymph node metastasis of papillary thyroid carcinoma stained with S100A4 (**E**,  $\times 100$ ). An arrow indicated the metastatic foci. Strong staining of some lymphocytes, dendritic, and stromal cells were also shown surrounding the germinal centre, which is not stained (**E**,  $\times 100$ ; **F**,  $\times 200$ ).

**Table 1** S100A4 immunostaining in MNG and PTC from primary and metastatic regions

S100A4 labelling	Simple MNG (n = 6)	MNG adjacent to PTC (n = 15)	Primary PTC (n = 28)	Metastatic PTC (n = 28)
Negative	6	4	4	2
Focal (1–25%)		11	3	2
Diffuse (26–100%)			21	24

nuclear staining may be associated with aggressive behaviour of the cancer (Figure 3). Among the four primary PTC samples with negative S100A4 staining, strong staining was observed in two matched lymph node metastasis tumour tissues. Interestingly, in 11 out of 15 cases where MNG were next to PTC, focal moderate cytoplasmic and nuclear staining could be found in MNG (Figure 4, upper panels A and B) as compared to the stronger staining in PTC (Figure 4, upper panels C and D). Examination of the same MNG area stained by haematoxylin and eosin failed to show the diagnostic nuclear features of PTC such as clearing of the nucleoplasm, peripheral margination of chromatin, or nuclear grooves, although subtle nuclear atypia manifesting as nucleomegaly and slight irregularity of the nuclear membrane was evident (Figure 4, lower panels A and B). These features were, however, present in the PTC area of the same patient (Figure 4, lower panels C and D). However, in the six cases with simple MNG, none of them labelled by S100A4 (Figure 1B).

#### Analysis of thyroid tumour specimens for S100A4 gene expression by quantitative real-time RT-PCR analysis

Since S100A4 was intensely immunostained in metastatic tumours as compared to the primary tumours, we wondered whether its

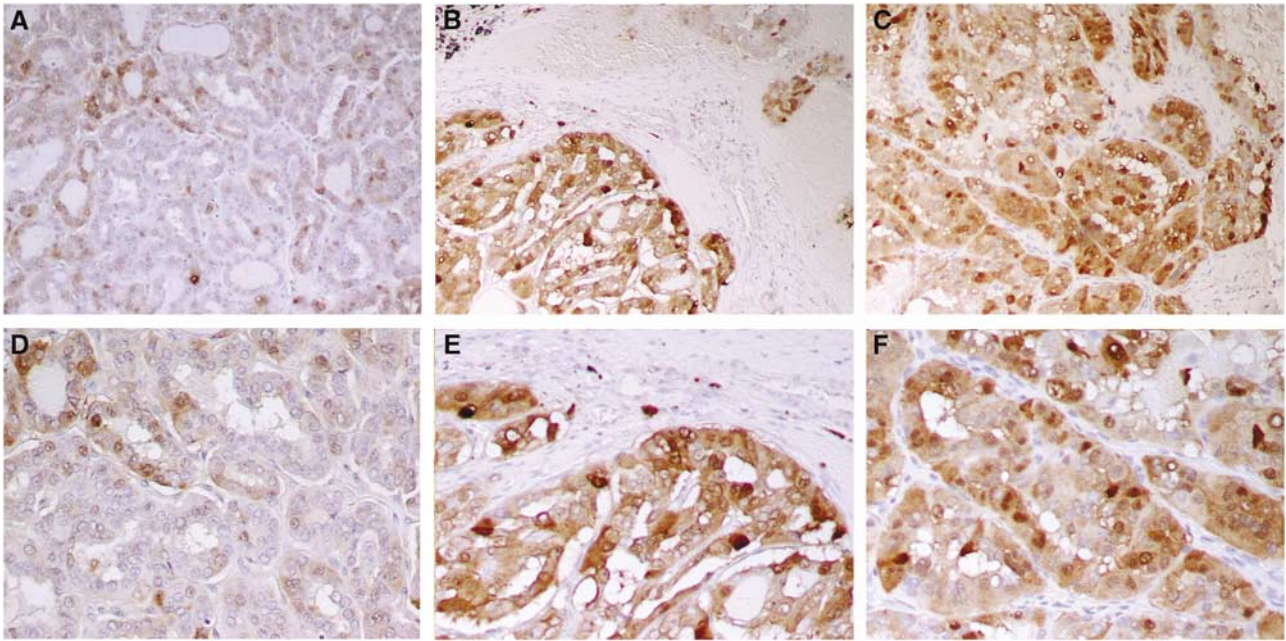
mRNA transcripts were also increased to the same degree as its protein expression. To this end, we analysed S100A4 transcripts from 10 patients with matched tissues of normal thyroid, PTC and lymph node metastasis by real-time RT-PCR. As shown in Figure 5, significantly higher S100A4 expression was seen in metastatic tumours as compared to primary tumours ( $P < 0.01$ ) even though S100A4 overexpression was present in primary tumours when compared with normal thyroid tissue ( $P < 0.01$ ). These data suggest that S100A4 overexpression was involved in tumour invasion and metastasis.

#### DISCUSSION

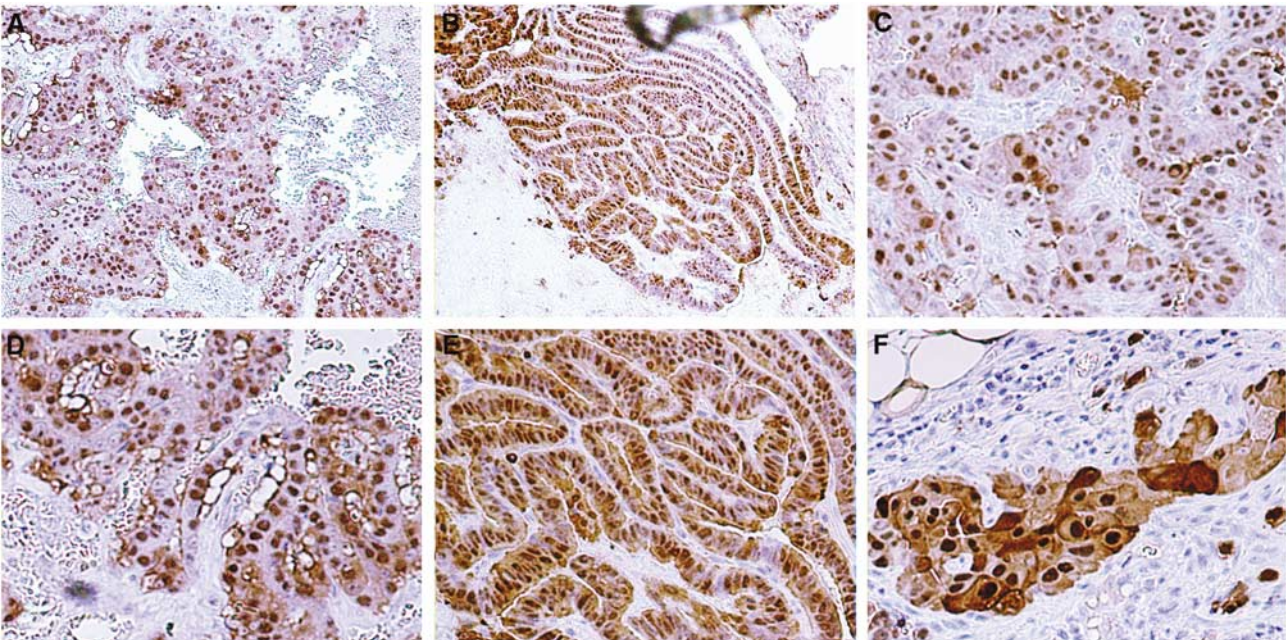
S100A4 is known to be involved in the tumour invasion and metastasis by virtue of its ability to activate nonmuscle myosin (Ford *et al*, 1997; Takenaga *et al*, 1997a; Bjornland *et al*, 1999; Li *et al*, 2003; Jenkinson *et al*, 2004). However, information on S100A4 expression in thyroid tumour cells is limited thus far, although high S100A4 expression in breast, ovary, colon, gastric, and pancreatic carcinomas has been reported (Mazzucchelli, 2002). In an early study, we have shown increased S100A4 expression in thyroid carcinoma specimens with advanced disease stage and indicated that it may be a useful prognostic marker for thyroid carcinoma (Zou *et al*, 2004). In the present study, we have shown increased S100A4 expression in thyroid tumour cells metastasised to regional lymph nodes or distant organs and at the tumour invasion front in matched primary thyroid tumour and their metastatic specimens. These findings provide further support that S100A4 is involved in thyroid cancer invasion and metastasis.

Since S100A4 is expressed in a variety of cell types such as lymphocytes, dendritic cells, macrophages, and smooth muscles (Takenaga *et al*, 1997b; Rudland *et al*, 2000), it is important to examine S100A4 expression at the cellular level to ascertain that higher expression of S100A4 mRNA in thyroid carcinoma specimens reflects the expression in thyroid carcinoma cells themselves.





**Figure 2** Immunostaining of primary and metastatic papillary thyroid carcinoma cells with anti-S100A4 polyclonal antibody from the same patient. Weak cytoplasmic labelling of papillary thyroid carcinoma cells in the central portion of the tumour at the magnifications  $\times 100$  (**A**) and  $\times 200$  (**D**). Strong cytoplasmic labelling of carcinoma cells at the invading front of primary tumour  $\times 100$  (**B**) and  $\times 200$  (**E**), and in metastatic lymph node at the magnifications of  $\times 100$  (**C**) and  $\times 200$  (**F**).

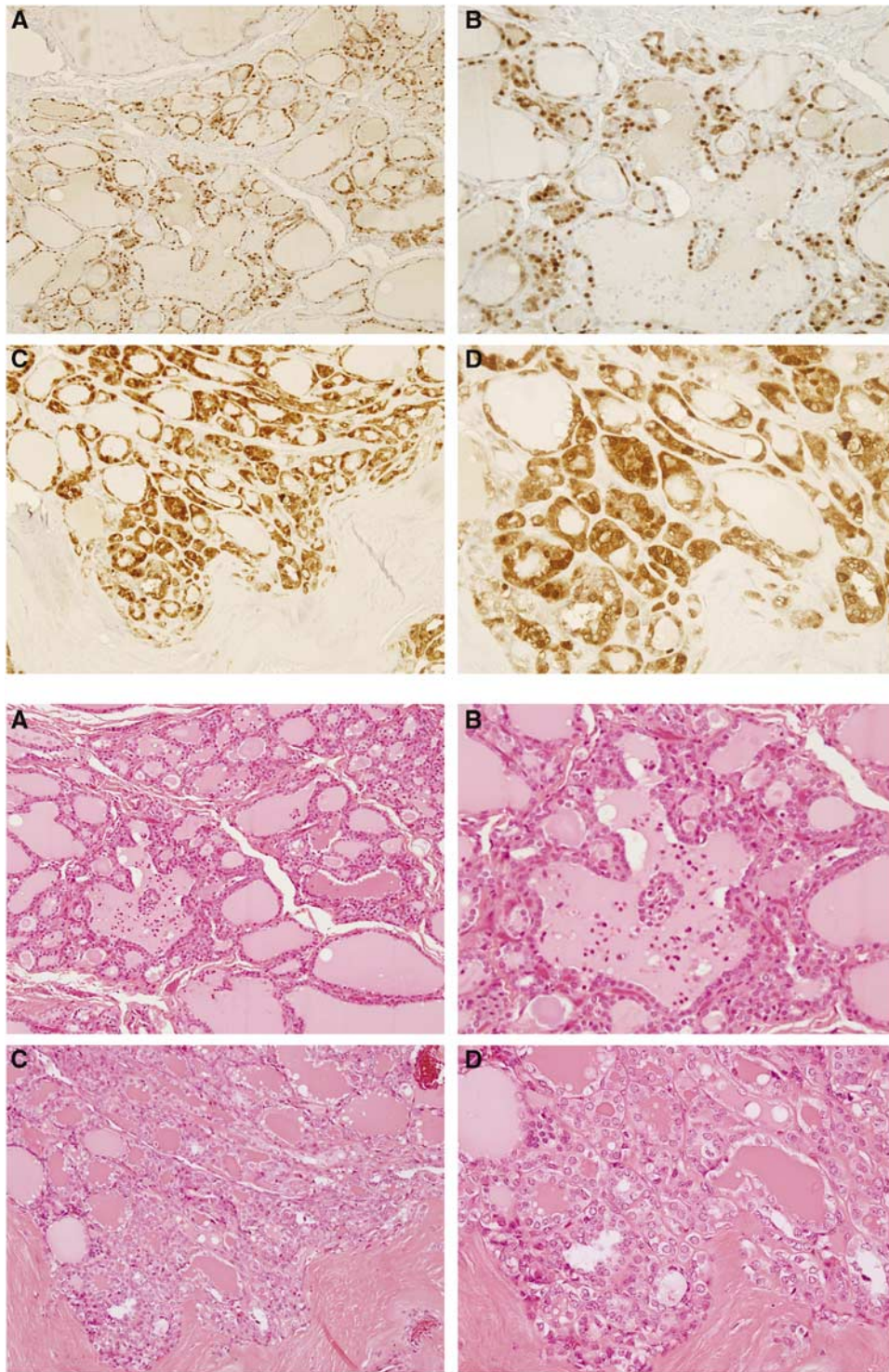


**Figure 3** Nuclear staining of papillary thyroid carcinoma cells with anti-S100A4 polyclonal antibody. Weak cytoplasmic and strong nuclear labelling of primary PTC (**A**,  $\times 100$ ; **D**,  $\times 200$ ) in a patient who developed distant metastasis (carcinoma cells metastasised to nose) 8 years after surgical removal of the primary thyroid tumour. Stronger cytoplasmic and nuclear labelling of the metastatic PTC is shown from the same patient (**B**,  $\times 100$ ; **E**,  $\times 200$ ). Weak cytoplasmic and strong nuclear labelling of primary PTC is shown in another patient (**C**,  $\times 200$ ). Stronger cytoplasmic and nuclear labelling of papillary thyroid carcinoma cells that metastasised to a regional lymph node of the same patient who later developed lung metastasis 1 year after treatment (**F**,  $\times 200$ ).

To evaluate this point and examine more closely the S100A4 expression in invasive and metastatic cells, we performed immunohistochemical analysis using polyclonal rabbit anti-S100A4 antibody. Strong immunostaining was observed at the tumour invading front and metastatic site. This observation is

further confirmed by quantitative real-time RT-PCR analysis, which shows higher S100A4 mRNA in lymph node metastasis as compared to primary tumours, supporting the role of S100A4 in cell motility and invasion (Ninomiya *et al*, 2001). Previous immunohistochemical studies of S100A4 showed an overexpres-

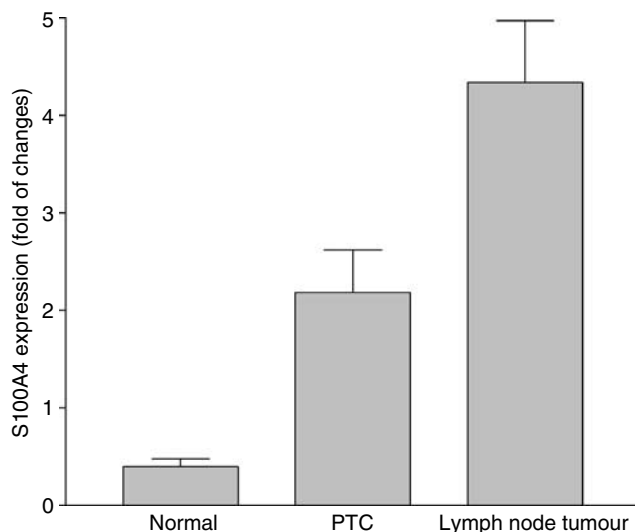




**Figure 4** Focal S100A4 immunostaining of thyroid follicular cells in a multinodular goitre coexisted with papillary thyroid carcinoma. Moderate focal cytoplasmic and nuclear labelling of thyroid follicular cells can be seen in a multinodular goitre (upper panel: **A**,  $\times 100$ ; **B**,  $\times 200$ ), which is adjacent to papillary thyroid carcinoma. Strong labelling was shown in thyroid papillary carcinoma cells at the invading front from the same patient (upper panel: **C**,  $\times 100$ ; **D**,  $\times 200$ ). The lower panel shows the conventional haematoxylin and eosin staining of the corresponding areas shown in the upper panel.

sion in 41% of breast carcinomas (Rudland *et al*, 2000), 55% of gastric carcinomas (Yonemura *et al*, 2000), 94% of colorectal adenocarcinomas (Takenaga *et al*, 1997b), 93% of invasive pancreatic carcinomas (Rosty *et al*, 2002), and 25% of oesophageal squamous carcinoma. Using tissue microarrays, Cross *et al* (2005) has recently demonstrated that S100A6, S100A8, S100A9, and

S100A11 are all expressed in common cancers, especially breast cancer. Moreover, they found a translocation of S100A11 expression from exclusively nuclear location in normal tissues to cytoplasmic and nuclear in all common cancers. We instead found a translocation of S100A4 expression from cytoplasmic to nuclear in five samples with advanced disease stage, suggesting that



**Figure 5** Comparison of S100A4 expression in tissues from normal thyroid, papillary thyroid carcinoma, and its lymph node metastasis by real-time quantitative RT-PCR. Total RNAs were isolated from 10 patients with matched tissues of normal thyroid, papillary thyroid carcinoma, and its lymph node metastasis. After reverse transcription, S100A4 mRNA levels among different tissues were determined by quantitative real-time PCR. The fold of changes in S100A4 expression among 10 matched tissue samples (means  $\pm$  s.e.m. of three separate experiments) was shown after normalisation to that of GAPDH expression.

S100A4 translocation to the nucleus may be related to the proliferation or metastatic potential of the cancer cells. Flatmark *et al* (2003) has demonstrated that S100A4 nuclear localisation correlated with tumour stage and aggressiveness of colorectal carcinoma. A recent study has shown that A100A1, another member of the S100 family of proteins, can interact with S100A4 to modulate the effect of S100A4 on their metastatic abilities (Wang *et al*, 2005).

Although it remained unclear what causes S100A4 overexpression in thyroid carcinomas, it has been shown that hypomethylation of S100A4 gene correlates with gene activation and overexpression in human pancreatic carcinomas and colon adenocarcinoma cell lines (Nakamura and Takenaga, 1998; Rosty *et al*, 2002). Hypomethylation of the first (Rosty *et al*, 2002) and second introns (Nakamura and Takenaga, 1998) were well correlated with the expression of S100A4. The addition of 5-Aza-2'-deoxycytidine, an inhibitor of the eukaryotic DNA methyltransferase, induced the expression of the S100A4 gene in colon adenocarcinoma cell lines (Nakamura and Takenaga, 1998). In humans, the gene for S100A4 occurs in a cluster of 13 S100 genes on chromosome 1q21 (Schafer *et al*, 1995; Heizmann *et al*, 2002). Gain of 1q and loss of 9q21.3–q32 have been reported to be associated with a less favourable prognosis in papillary thyroid carcinoma using comparative genomic hybridisation (Kjellman *et al*, 2001). Gain of 1q and loss of 9q21.3–q32 are exclusively seen in tumours from patients with aggressive disease, and the presence of distant metastases is associated with gain of 1q. It is possible

that S100A4 may be one of those genes involved in the gain of 1q given that S100A4 is located in 1q21 region.

In the rodent model systems, elevated levels of S100A4 can only synergise with growth-promoting oncogenic products such as c-erbB-2/*neu* (Davies *et al*, 1996) or have to be expressed in benign tumours before metastasis can be induced (Lloyd *et al*, 1998). Transgenic mouse studies have demonstrated that S100A4 by itself is not able to initiate tumours or induce metastatic effect in normal rodent cells (Davies *et al*, 1995). However, it did induce metastatic disease of cells that had been initiated by oncogenes such as c-erbB-2/*neu*. When S100A4 transgenic mice were mated with *neu* transgenic mice, known for developing mammary cancer after multiple pregnancies, double-positive offspring that inherited both genes developed mammary tumours with significantly more lung metastases than mice that inherited only the *neu* oncogene (Davies *et al*, 1996). Overexpression of c-erbB-2/*neu* has been previously reported in PTC, and PTC without distant metastases showed significantly less cytoplasmic immunostaining than those with development of metastases (Haugen *et al*, 1992; Kremser *et al*, 2003). Taken together with our findings of S100A4 overexpression in advanced thyroid tumours, the transgenic mouse model may fit well with human PTC, implicating that S100A4 may enhance thyroid cancer invasion and metastasis in cooperation with c-erbB-2/*neu*. Interestingly, mice with a germline inactivation of the S100A4 gene have been found to develop spontaneous tumours as a result of destabilisation of the apoptosis-promoting function of p53 tumour suppressor gene. However, tumours developed in these mice were nonmetastatic (EL Naaman *et al*, 2004).

In contrast to the negative immunostaining in specimens of simple multinodular goitre, we detected focal immunostaining of MNG that was adjacent to papillary thyroid carcinoma. Although it is not clear what leads to the focal overexpression of S100A4, it may be resulted from local demethylation or hypomethylation, one of the early events in tumour development. Overexpression of S100A4 induced by this epigenetic event may contribute to abrogation of apoptosis and tumorigenesis (EL Naaman *et al*, 2004). It may also be an early sign of malignant transformation resulting from genetic mutations leading to oncogene activation and/or inactivation of tumour suppressor genes. This hypothesis was supported by transgenic mouse studies described above and previous studies demonstrating mutations of several oncogenes (ras, TRK, and gsp), tumour suppressor genes such as FHIT, and mitochondrial genes in benign MNG (Shi *et al*, 1991; Farid *et al*, 1995; Zou *et al*, 1999; Abu-Amero *et al*, 2005). Although these S100A4-positive cells lack characteristic morphological feature of PTC, we suggest that positive staining for S100A4 of a MNG should alert pathologist to the coexistence of PTC foci and should be verified in a large series of specimens.

In summary, we have investigated S100A4 expression at the molecular and cellular level in matched primary and metastatic PTC specimens. High levels of S100A4 were detected in 24 of 28 (86%) PTC specimens and their local regional lymph node or distant metastasis. The S100A4 expression was much higher at the tumour-invading front and in the metastatic tumours as compared to the primary tumours. These data suggest that overexpression of S100A4 is associated with thyroid tumour invasion and metastasis and it may be a potential target for therapeutic intervention.

## REFERENCES

- Abu-Amero KK, Alzahrani AS, Zou M, Shi Y (2005) High frequency of somatic mitochondrial DNA mutations in human thyroid carcinomas and complex I respiratory defect in thyroid cancer cell lines. *Oncogene* **24**: 1455–1460
- Ahlemeyer B, Beier H, Semkova I, Schaper C, Kriegelstein J (2000) S-100beta protects cultured neurons against glutamate- and staurosporine-induced damage and is involved in the antiapoptotic action of the 5 HT(1A)-receptor agonist, Bay x 3702. *Brain Res* **858**: 121–128

- Barracough R (1998) Calcium-binding protein S100A4 in health and disease. *Biochim Biophys Acta* **1448**: 190–199
- Bjornland K, Winberg JO, Odegaard OT, Hovig E, Loennechen T, Aasen AO, Fodstad O, Maelandsmo GM (1999) S100A4 involvement in metastasis: deregulation of matrix metalloproteinases and tissue inhibitors of matrix metalloproteinases in osteosarcoma cells transfected with an anti-S100A4 ribozyme. *Cancer Res* **59**: 4702–4708
- Cho YG, Nam SW, Kim TY, Kim YS, Kim CJ, Park JY, Lee JH, Kim HS, Lee JW, Park CH, Song YH, Lee SH, Yoo NJ, Lee JY, Park WS (2003) Overexpression of S100A4 is closely related to the aggressiveness of gastric cancer. *APMIS* **111**: 539–545
- Cross SS, Hamdy FC, Deloulme JC, Rehman I (2005) Expression of S100 proteins in normal human tissues and common cancers using tissue microarrays: S100A6, S100A8, S100A9 and S100A11 are all overexpressed in common cancers. *Histopathology* **46**: 256–269
- Davies M, Harris S, Rudland P, Barracough R (1995) Expression of the rat, S-100-related, calcium-binding protein gene, p9Ka, in transgenic mice demonstrates different patterns of expression between these two species. *DNA Cell Biol* **14**: 825–832
- Davies MP, Rudland PS, Robertson L, Parry EW, Jolicoeur P, Barracough R (1996) Expression of the calcium-binding protein S100A4 (p9Ka) in MMTV-neu transgenic mice induces metastasis of mammary tumours. *Oncogene* **13**: 1631–1637
- Diederichs S, Bulk E, Steffen B, Ji P, Tickenbrock L, Lang K, Zanker KS, Metzger R, Schneider PM, Gerke V, Thomas M, Berdel WE, Serve H, Muller-Tidow C (2004) S100 family members and trypsinogens are predictors of distant metastasis and survival in early-stage non-small cell lung cancer. *Cancer Res* **64**: 5564–5569
- Donato R (2001) S100: a multigenic family of calcium-modulated proteins of the EF-hand type with intracellular and extracellular functional roles. *Int J Biochem Cell Biol* **33**: 637–668
- Du XJ, Cole TJ, Tennis N, Gao XM, Kontgen F, Kemp BE, Heierhorst J (2002) Impaired cardiac contractility response to hemodynamic stress in S100A1-deficient mice. *Mol Cell Biol* **22**: 2821–2829
- EL Naaman C, Grum-Schwensen B, Mansouri A, Grigorian M, Santoni-Rugiu E, Hansen T, Kriajevska M, Schafer BW, Heizmann CW, Lukanidin E, Ambartsumian N (2004) Cancer predisposition in mice deficient for the metastasis-associated Mts1(S100A4) gene. *Oncogene* **23**: 3670–3680
- Farid NR, Zou M, Shi Y (1995) Genetics of follicular thyroid cancer. *Endocrinol Metab Clin North Am* **24**: 865–883
- Flatmark K, Pedersen KB, Nesland JM, Rasmussen H, Aamodt G, Mikalsen SO, Bjornland K, Fodstad O, Maelandsmo GM (2003) Nuclear localization of the metastasis-related protein S100A4 correlates with tumour stage in colorectal cancer. *J Pathol* **200**: 589–595
- Ford HL, Silver DL, Kachar B, Sellers JR, Zain SB (1997) Effect of Mts1 on the structure and activity of nonmuscle myosin II. *Biochemistry* **36**: 16321–16327
- Hanahan D, Weinberg RA (2000) The hallmarks of cancer. *Cell* **100**: 57–70
- Harpio R, Einarsson R (2004) S100 proteins as cancer biomarkers with focus on S100B in malignant melanoma. *Clin Biochem* **37**: 512–518
- Haugen DR, Akslen LA, Varhaug JE, Lillehaug JR (1992) Expression of c-erbB-2 protein in papillary thyroid carcinomas. *Br J Cancer* **65**: 832–837
- Heizmann CW (1999) Ca<sup>2+</sup>-binding S100 proteins in the central nervous system. *Neurochem Res* **24**: 1097–1100
- Heizmann CW (2002) The multifunctional S100 protein family. *Methods Mol Biol* **172**: 69–80
- Heizmann CW, Fritz G, Schafer BW (2002) S100 proteins: structure, functions and pathology. *Front Biosci* **7**: d1356–d1368
- Hoyaux D, Decaestecker C, Heizmann CW, Vogl T, Schafer BW, Salmon I, Kiss R, Pochet R (2000) S100 proteins in *Corpora amyloacea* from normal human brain. *Brain Res* **867**: 280–288
- Jenkinson SR, Barracough R, West CR, Rudland PS (2004) S100A4 regulates cell motility and invasion in an *in vitro* model for breast cancer metastasis. *Br J Cancer* **90**: 253–262
- Kiewitz R, Acklin C, Minder E, Huber PR, Schafer BW, Heizmann CW (2000) S100A1, a new marker for acute myocardial ischemia. *Biochem Biophys Res Commun* **274**: 865–871
- Kinder BK (2003) Well differentiated thyroid cancer. *Curr Opin Oncol* **15**: 71–77
- Kjellman P, Lagercrantz S, Hoog A, Wallin G, Larsson C, Zedenius J (2001) Gain of 1q and loss of 9q21 are associated with a less favorable prognosis in papillary thyroid carcinoma. *Genes Chromosomes Cancer* **32**: 43–49
- Kremser R, Obrist P, Spizzo G, Erler H, Kandler D, Kemmler G, Mikuz G, Ensinger C (2003) Her2/neu overexpression in differentiated thyroid carcinomas predicts metastatic disease. *Virchows Arch* **442**: 322–328, Epub 2003 Mar 8
- Lee WY, Su WC, Lin PW, Guo HR, Chang TW, Chen HH (2004) Expression of S100A4 and Met: potential predictors for metastasis and survival in early-stage breast cancer. *Oncology* **66**: 429–438
- Li ZH, Spektor A, Varlamova O, Bresnick AR (2003) Mts1 regulates the assembly of nonmuscle myosin-IIA. *Biochemistry* **42**: 14258–14266
- Lin J, Yang Q, Yan Z, Markowitz J, Wilder PT, Carrier F, Weber DJ (2004) Inhibiting S100B restores p53 levels in primary malignant melanoma cancer cells. *J Biol Chem* **279**: 34071–34077, Epub 2004 Jun 03
- Liotta LA, Kohn EC (2001) The microenvironment of the tumour-host interface. *Nature* **411**: 375–379
- Lloyd BH, Platt-Higgins A, Rudland PS, Barracough R (1998) Human S100A4 (p9Ka) induces the metastatic phenotype upon benign tumour cells. *Oncogene* **17**: 465–473
- Mazzaferri EL (1999) An overview of the management of papillary and follicular thyroid carcinoma. *Thyroid* **9**: 421–427
- Mazzucchelli L (2002) Protein S100A4: too long overlooked by pathologists? *Am J Pathol* **160**: 7–13
- Moriyama-Kita M, Endo Y, Yonemura Y, Heizmann CW, Schafer BW, Sasaki T, Yamamoto E (2004) Correlation of S100A4 expression with invasion and metastasis in oral squamous cell carcinoma. *Oral Oncol* **40**: 496–500
- Most P, Bernotat J, Ehlermann P, Pleger ST, Reppel M, Borries M, Niroomand F, Pieske B, Janssen PM, Eschenhagen T, Karczewski P, Smith GL, Koch WJ, Katus HA, Remppis A (2001) S100A1: a regulator of myocardial contractility. *Proc Natl Acad Sci USA* **98**: 13889–13894
- Most P, Remppis A, Pleger ST, Loffler E, Ehlermann P, Bernotat J, Kleuss C, Heierhorst J, Ruiz P, Witt H, Karczewski P, Mao L, Rockman HA, Duncan SJ, Katus HA, Koch WJ (2003) Transgenic overexpression of the Ca<sup>2+</sup>-binding protein S100A1 in the heart leads to increased *in vivo* myocardial contractile performance. *J Biol Chem* **278**: 33809–33817, Epub 2003 May 30
- Nakamura N, Takenaga K (1998) Hypomethylation of the metastasis-associated S100A4 gene correlates with gene activation in human colon adenocarcinoma cell lines. *Clin Exp Metastasis* **16**: 471–479
- Ninomiyama I, Ohta T, Fushida S, Endo Y, Hashimoto T, Yagi M, Fujimura T, Nishimura G, Tani T, Shimizu K, Yonemura Y, Heizmann CW, Schafer BW, Sasaki T, Miwa K (2001) Increased expression of S100A4 and its prognostic significance in esophageal squamous cell carcinoma. *Int J Oncol* **18**: 715–720
- Pedersen MV, Kohler LB, Grigorian M, Novitskaya V, Bock E, Lukanidin E, Berezin V (2004) The Mts1/S100A4 protein is a neuroprotectant. *J Neurosci Res* **77**: 777–786
- Rehman I, Cross SS, Azzouzi AR, Catto JW, Deloulme JC, Larre S, Champigneulle J, Fromont G, Cussenot O, Hamdy FC (2004) S100A6 (Calcylin) is a prostate basal cell marker absent in prostate cancer and its precursors. *Br J Cancer* **91**: 739–744
- Rosty C, Ueki T, Argani P, Jansen M, Yeo CJ, Cameron JL, Hruban RH, Goggins M (2002) Overexpression of S100A4 in pancreatic ductal adenocarcinomas is associated with poor differentiation and DNA hypomethylation. *Am J Pathol* **160**: 45–50
- Rudland PS, Platt-Higgins A, Renshaw C, West CR, Winstanley JH, Robertson L, Barracough R (2000) Prognostic significance of the metastasis-inducing protein S100A4 (p9Ka) in human breast cancer. *Cancer Res* **60**: 1595–1603
- Schafer BW, Wicki R, Engelkamp D, Mattei MG, Heizmann CW (1995) Isolation of a YAC clone covering a cluster of nine S100 genes on human chromosome 1q21: rationale for a new nomenclature of the S100 calcium-binding protein family. *Genomics* **25**: 638–643
- Sherman SI (2003) Thyroid carcinoma. *Lancet* **361**: 501–511
- Shi Y, Parhar RS, Zou M, Hammami MM, Akhtar M, Lum ZP, Farid NR, Al-Sedairy ST, Paterson MC (1999) Tissue inhibitor of metalloproteinases-1 (TIMP-1) mRNA is elevated in advanced stages of thyroid carcinoma. *Br J Cancer* **79**: 1234–1239
- Shi YF, Zou MJ, Schmidt H, Juhasz F, Stensky V, Robb D, Farid NR (1991) High rates of ras codon 61 mutation in thyroid tumors in an iodide-deficient area. *Cancer Res* **51**: 2690–2693
- Takenaga K, Nakamura Y, Sakiyama S (1997a) Expression of antisense RNA to S100A4 gene encoding an S100-related calcium-binding protein suppresses metastatic potential of high-metastatic Lewis lung carcinoma cells. *Oncogene* **14**: 331–337

- Takenaga K, Nakanishi H, Wada K, Suzuki M, Matsuzaki O, Matsuura A, Endo H (1997b) Increased expression of S100A4, a metastasis-associated gene, in human colorectal adenocarcinomas. *Clin Cancer Res* **3**: 2309–2316
- Taylor S, Herrington S, Prime W, Rudland PS, Barraclough R (2002) S100A4 (p9Ka) protein in colon carcinoma and liver metastases: association with carcinoma cells and T-lymphocytes. *Br J Cancer* **86**: 409–416
- Wang G, Zhang S, Fernig DG, Martin-Fernandez M, Rudland PS, Barraclough R (2005) Mutually antagonistic actions of S100A4 and S100A1 on normal and metastatic phenotypes. *Oncogene* **24**: 1445–1454
- Woodhouse EC, Chuaqui RF, Liotta LA (1997) General mechanisms of metastasis. *Cancer* **80**: 1529–1537
- Yonemura Y, Endou Y, Kimura K, Fushida S, Bandou E, Taniguchi K, Kinoshita K, Ninomiya I, Sugiyama K, Heizmann CW, Schafer BW, Sasaki T (2000) Inverse expression of S100A4 and E-cadherin is associated with metastatic potential in gastric cancer. *Clin Cancer Res* **6**: 4234–4242
- Zou M, Famulski KS, Parhar RS, Baitei E, Al-Mohanna FA, Farid NR, Shi Y (2004) Microarray analysis of metastasis-associated gene expression profiling in a murine model of thyroid carcinoma pulmonary metastasis: identification of S100A4 (Mts1) gene overexpression as a poor prognostic marker for thyroid carcinoma. *J Clin Endocrinol Metab* **89**: 6146–6154
- Zou M, Shi Y, Farid NR, al-Sedairy ST, Paterson MC (1999) FHIT gene abnormalities in both benign and malignant thyroid tumours. *Eur J Cancer* **35**: 467–472