

Corrigendum

Corrigendum to “*In Vivo* Biocompatibility of PLGA-Polyhexylthiophene Nanofiber Scaffolds in a Rat Model”

Anuradha Subramanian, Uma Maheswari Krishnan , and Swaminathan Sethuraman 

Center for Nanotechnology & Advanced Biomaterials, School of Chemical & Biotechnology, SASTRA University, Thanjavur 613 401, Tamil Nadu, India

Correspondence should be addressed to Swaminathan Sethuraman; swami@sastra.edu

Received 3 March 2019; Accepted 5 March 2019; Published 21 August 2019

Copyright © 2019 Anuradha Subramanian et al. This is an open access article distributed under the Creative Commons Attribution License, which permits unrestricted use, distribution, and reproduction in any medium, provided the original work is properly cited.

In the article titled “*In Vivo* Biocompatibility of PLGA-Polyhexylthiophene Nanofiber Scaffolds in a Rat Model” [1], an incorrect image was provided for Figure 2(j). The corrected figure is shown below.

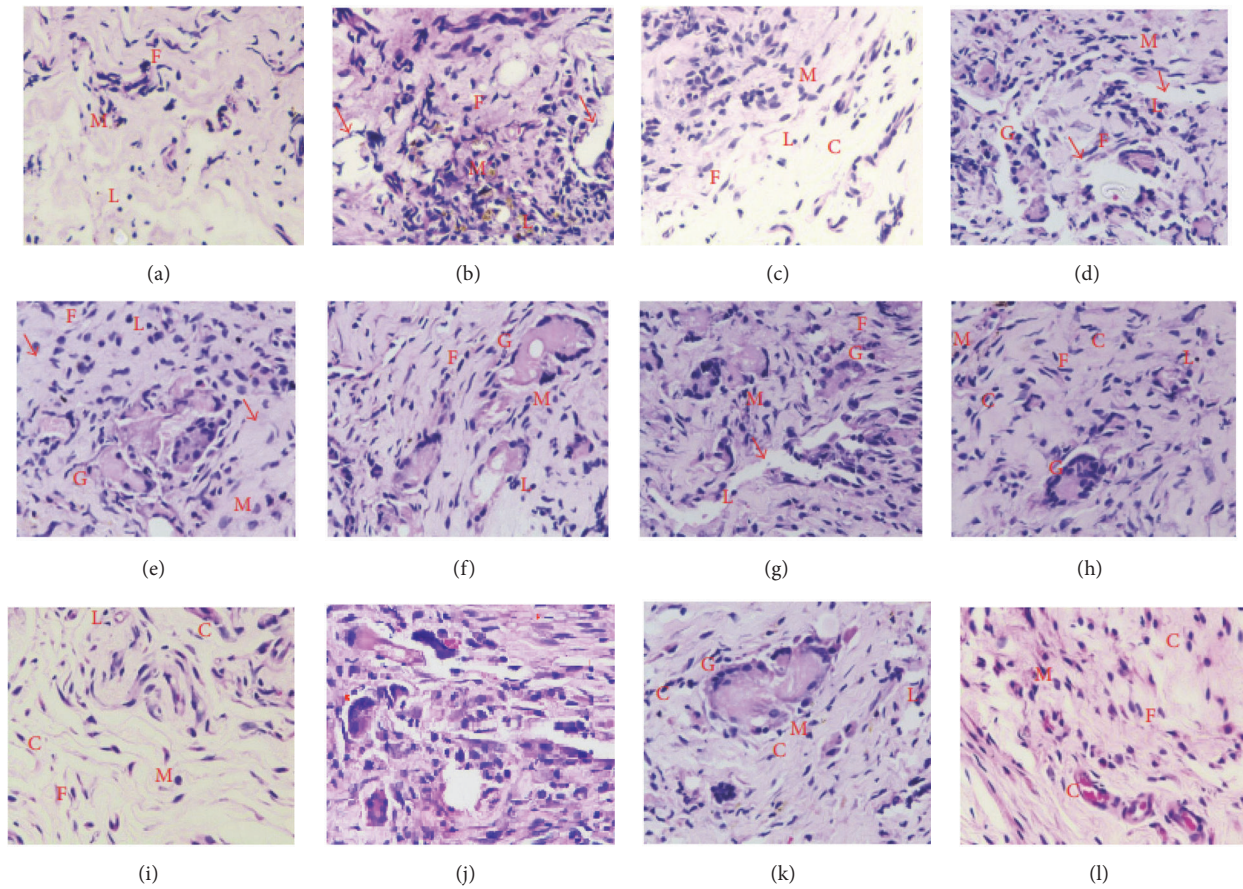


FIGURE 2: Micrographs of hematoxylin-eosin-stained tissue implanted with PLGA random nanofibers at (a) 2 weeks, (b) 4 weeks, and (c) 8 weeks; with PLGA-undoped PHT random fibers at (d) 2 weeks, (e) 4 weeks, and (f) 8 weeks; with PLGA-doped PHT random fibers at (g) 2 weeks, (h) 4 weeks, and (i) 8 weeks; and with PLGA-doped PHT aligned nanofibers at (j) 2 weeks, (k) 4 weeks, and (l) 8 weeks. C: collagen; L: lymphocytes; M: macrophages; F: fibroblast; G: giant cell; and arrows indicate implant sites.

References

- [1] A. Subramanian, U. M. Krishnan, and S. Sethuraman, "In vivo biocompatibility of PLGA-polyhexylthiophene nanofiber scaffolds in a rat model," *BioMed Research International*, vol. 2013, Article ID 390518, 8 pages, 2013.