

Abortive Proliferation of Rare T Cells Induced by Direct or Indirect Antigen Presentation by Rare B Cells In Vivo

By Sarah E. Townsend and Christopher C. Goodnow

From the Howard Hughes Medical Institute and Department of Microbiology and Immunology, Stanford University, Stanford, California 94305; and Medical Genome Center and Australian Cancer Research Foundation Genetics Laboratory, John Curtin School of Medical Research, Canberra ACT 2601, Australia

Summary

Antigen-specific B cells are implicated as antigen-presenting cells in memory and tolerance responses because they capture antigens efficiently and localize to T cell zones after antigen capture. It has not been possible, however, to visualize the effect of specific B cells on specific CD4⁺ helper T cells under physiological conditions. We demonstrate here that rare T cells are activated in vivo by minute quantities of antigen captured by antigen-specific B cells. Antigen-activated B cells are helped under these conditions, whereas antigen-tolerant B cells are killed. The T cells proliferate and then disappear regardless of whether the B cells are activated or tolerant. We show genetically that T cell activation, proliferation, and disappearance can be mediated either by transfer of antigen from antigen-specific B cells to endogenous antigen-presenting cells or by direct B–T cell interactions. These results identify a novel antigen presentation route, and demonstrate that B cell presentation of antigen has profound effects on T cell fate that could not be predicted from in vitro studies.

Key words: peripheral tolerance • antigen-presenting cell • interactions • B cell • T cell

A variety of both beneficial and pathological immune responses involve B cell presentation of antigen to Ths. Memory B cells carry high affinity B cell receptors (BCRs)¹ that allow them to concentrate trace amounts of antigen and these cells often localize to sites of antigen entry or filtering, such as beneath the mucosal epithelia and the splenic marginal zone (1, 2). Once they bind antigen, they rapidly move to the T cell zones of the spleen and lymph node, where there is a large traffic of recirculating T cells (1). Similarly, self-reactive B cells are concentrated in the T zones as a result of binding autoantigens (3–6). Once located in this site, memory B cells which present foreign antigens to Ths proliferate and produce antibody, whereas self-reactive B cells that present self-antigens are killed by Ths expressing Fas ligand (7, 8). Although the outcome of these B–T cell interactions is known for the B cell, it is not known if the Th is primed, proliferates, or is tolerized, and how B cell presentation may impact regulatory phenomena such as immune deviation in allergy or epitope spreading in autoimmunity.

In vitro studies have shown that activated, antigen-specific B cells present antigen to T cells and trigger proliferation and lymphokine secretion, although this presentation may be less efficient than presentation by activated dendritic cells (9–12). By contrast with activated B cells, presentation of antigen by tolerant B cells does not induce T cell proliferation and lymphokine secretion in vitro, due to deficient expression of, and costimulation by, B7.2 (13). Based upon in vitro studies with T cell clones, presentation of antigen by costimulation-deficient cells might be predicted to induce a state of T cell anergy (14–16).

B cells have been shown to be tolerogenic for T cells in vivo, but it remains unclear whether the basis for tolerance lies in T cell deletion, anergy, or other regulatory processes (17–22). It has been suggested that B cells cannot activate T cells in vivo, but rather induce a state of anergy (17, 21, 23–25). Studying the fate of helper T cells after B cell antigen presentation in vivo represents a substantial technical challenge. Approaches that use irradiated or lymphocyte-deficient mice as vessels to track specific cells produce inflammatory conditions or disrupted lymphoid microenvironments that induce nonspecific proliferation in T cells (26–28 and Townsend, S.E., data not shown). Conversely, experiments in TCR-transgenic mice involve unphysiologically high frequencies of specific T cells that can obscure regulatory effects (29, 30). An elegant solution to the

¹Abbreviations used in this paper: BCR, B cell receptor; HEL, hen egg lysozyme; sHEL, soluble HEL; CFSE, 5- (and 6-) carboxyfluorescein diacetate succinimidyl ester.

problem of tracking T cell fate in a physiological setting is the adoptive transfer of TCR-transgenic T cells into intact, unirradiated mice using unique cell surface markers to visualize the subsequent responses of the T cells to antigen (31).

Here we show, using an adoptive transfer system, that naive antigen-specific T cells efficiently find tolerant or naive antigen-specific B cells in intact, unirradiated recipients, in the context of a normal immune repertoire and an unperturbed microenvironment. Naive B cells that have acutely captured antigen are helped to antibody production, whereas tolerant B cells that have chronically captured antigen are killed. In addition to direct presentation of antigen to T cells, we describe a novel and efficient process of antigen transfer by B cells to an endogenous APC population. In the absence of adjuvant, presentation of antigen by tolerant B cells, naive B cells, or after transfer of antigen to endogenous APCs in each case leads to the initial activation and proliferation of the T cells, followed by rapid disappearance.

Materials and Methods

Mice. Transgenic mice expressing the hen egg lysozyme (HEL)-specific 3A9 transgenic TCR (13) on the B10.BR background were bred with B6 Ly5^a congenic mice (gift of Dr. I. Weissman, Stanford University, Stanford, CA) to generate TCR⁺ Ly5^a H-2^{kb} donor mice. Transgenic mice expressing a HEL-specific BCR (Ig^{HEL}) and double transgenic mice expressing both the HEL-specific BCR and soluble HEL (sHEL × Ig^{HEL}; reference 32) on the B6 background were bred with B10.BR mice to generate Ig^{HEL}+H-2^{kb} and sHEL+Ig^{HEL}+H-2^{kb} donor mice. Double transgenic (sHEL × Ig^{HEL}) mice bearing the *lpr/lpr* mutation in Fas and expressing H-2^{kb} were bred and screened as described (7, 33). Recipient mice were unmanipulated (B10.BR × B6)F1 mice bred at the Research Animal Facility at Stanford (Stanford, CA). The transgenic phenotypes of all donor cells were verified by flow cytometry before transfer into recipient mice. Donor cells and recipient mice were sex-matched for all transfers >3 d. Mice were used between 6 and 20 wk of age. Radiation bone marrow chimeras were made as described previously (3, 4) using T cell-depleted bone marrow from B6 donors to reconstitute lethally irradiated (B10.BR × B6)F1 recipients. The recipients were left to reconstitute for 9 wk before use in experiments. Polymyxin B (110 mg/liter) and neomycin (1.1 g/liter) were added to the drinking water weekly during reconstitution.

B Cell Purification and Antigen Loading. Whole spleen cell suspensions from B cell donors were transferred, except where indicated in the figure legends. B cells were purified for some experiments by incubating spleen cell suspensions with B220⁺ microbeads (Milteny Biotec, Auburn, CA) as per the manufacturer's instructions, and passing over MiniMACS columns (Milteny Biotec). Preparations of whole spleen or purified B cells were loaded with HEL in vitro by incubating cells at <5 × 10⁶ cells/ml in RPMI medium, 10% FCS, and 10 mM Hepes, with either 1 μg/ml (Figs. 2 and 3) or 10 ng/ml (Figs. 1, 5, 6, and 7) HEL for 2 h at 37°C in polypropylene tubes. Cells were washed with complete medium, counted, and resuspended in PBS for injection.

Western Blot for HEL Quantitation. B cells were purified from the spleens of HEL-specific Ig^{HEL}-transgenic and double transgenic (sHEL × Ig^{HEL}) mice and pulsed in vitro with 10 ng/ml HEL as above. Cells were pelleted and lysed in 1% NP-40 under lysis

conditions previously described (34). Lysates of 3 × 10⁶ cells were run on a 15% SDS-polyacrylamide gel under reducing conditions. HEL was detected by probing with HyHEL9-biotin, followed by Streptavidin-horseradish peroxidase (Nycomed Amersham, Buckinghamshire, UK) and Renaissance detection system (New England Nuclear Life Sciences, Boston, MA). Quantitation was accomplished by adding titrated amounts of exogenous HEL (Sigma Chemical Co., St. Louis, MO) to nontransgenic spleen cell lysates.

Adoptive Transfers. Spleen, inguinal, brachial, axillary, cervical, and mesenteric lymph nodes were collected from 3A9 TCR H-2^{kb} Ly5^a transgenic mice into RPMI medium plus 10% FCS, and cell suspensions were prepared by mashing through metal sieves. The cells were washed, counted, and resuspended in PBS for injection. The transgenic phenotype of the cells was verified by flow cytometry, the cells were pooled and cell suspensions containing 2.5–3 × 10⁶ CD4⁺ cells were injected intravenously via the lateral tail vein. 18–24 h later, cell suspensions containing 2.5–3 × 10⁶ HEL-specific transgenic B cells were injected intravenously via the lateral tail vein. Recipient mice were killed at various time points after transfer, spleen, cervical lymph node, and blood were collected, and cell suspensions prepared for analysis by flow cytometry and spot ELISA. At the time of collection, fragments of spleen and inguinal lymph nodes were immersed in OCT embedding medium (Tissue Tek; Sakura Finetek, Torrance, CA) and flash frozen in liquid nitrogen for histology.

CFSE Labeling of T Cells. Spleen and lymph node cells were labeled with 5- (and 6-) carboxyfluorescein diacetate succinimidyl ester (CFSE) as described (35). In brief, red blood cells were lysed and the remaining cells were washed with PBS and then incubated with 2 μM CFSE in PBS at 5 × 10⁷ cells/ml at 37°C for 30 min. The labeling was stopped by adding excess cold RPMI, 10% FCS. The cells were washed with PBS, counted, and resuspended in PBS for injection.

Flow Cytometry. Flow cytometry was performed using FACS[®] 440 and Vantage cytometers (Becton Dickinson, Mountain View, CA) and FACS[®]-Desk and FLOJO analysis software (Stanford Shared FACS[®] Facility, Stanford, CA). The staining reagents used were: Ly5^a, AS-20-biotin or -PE; CD4, GK1.5-allophycocyanin (gift of Dr. John Altman, Emory University, Atlanta, GA); CD69-FITC or -biotin (PharMingen, San Diego, CA); B220, RA3-6B2-PE (Caltag, Burlingame, CA); Streptavidin-Texas red (TR; Vector Laboratories, Burlingame, CA), or -allophycocyanin (Biomedex, Foster City, CA); IgDa, AMS9.1-FITC; HEL, HyHEL9-biotin or -Tricolor (custom conjugation; Caltag). Some samples were live-gated on target populations to collect sufficient data; all negative gating was performed after analysis, as described in the figure legends.

Histology. Cryostat sections (10 μM) of spleen were stained for immunofluorescence using CD4-allophycocyanin and HEL followed by HyHEL9-biotin and Streptavidin-Cy3 (Jackson ImmunoResearch, Bar Harbor, ME) in the presence of normal mouse serum, normal rat serum, and 0.1% bovine serum albumin. Images were produced using a confocal microscope (Multiprobe 2010; Molecular Dynamics, Eugene, OR), ImageSpace software (Molecular Dynamics), and an Indigo 2 computer (Silicon Graphics, Palo Alto, CA) at the Cell Sciences Imaging Facility, Stanford University (Stanford, CA).

Results

The experimental system used to visualize the consequences of specific B–T cell interactions in vivo is dia-

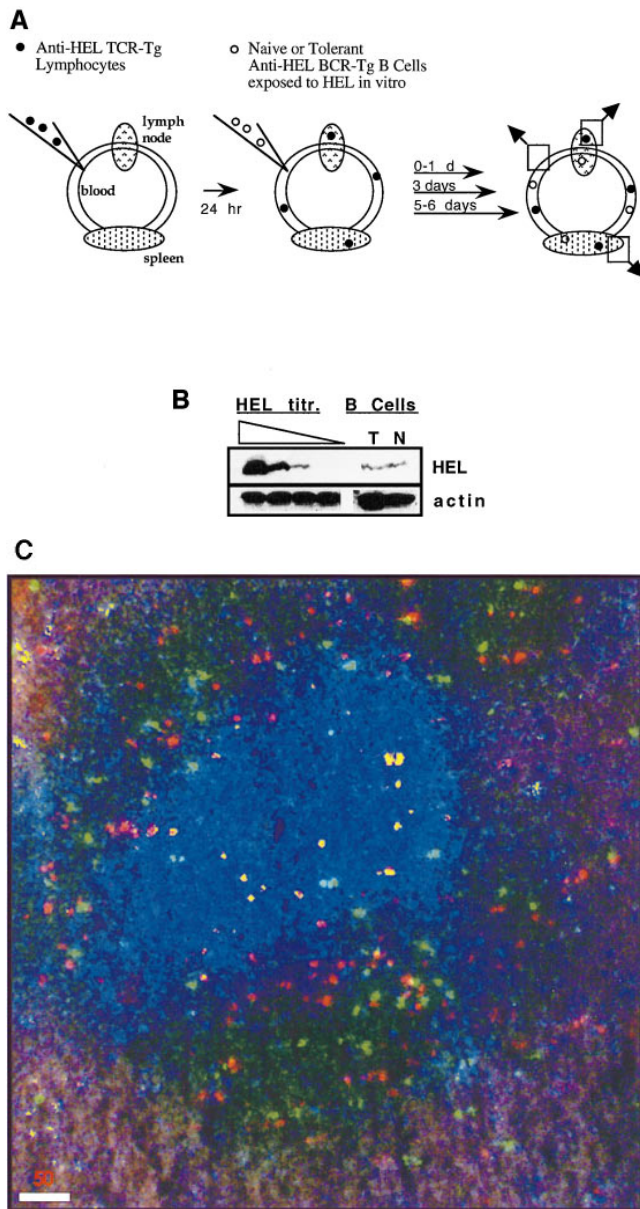


Figure 1. Tracking antigen-specific B cells and Ths in normal lymphoid tissue. (A) Schematic of experiments. (B) Quantitation of transferred antigen. NP-40 lysates of 3×10^6 antigen-pulsed, HEL-specific B cells purified from naive (N) Ig^{HEL}-transgenic or -tolerant (T) HEL/Ig^{HEL}. Double transgenic mice were subjected to SDS-PAGE, blotted to nitrocellulose, and probed with antibodies specific for HEL and actin as indicated. Serial dilutions of HEL were added to nontransgenic spleen lysates to give HEL titrations of 50 ng, 10 ng, 2 ng, and 400 pg. The amount of HEL associated with each B cell population was ~ 2 ng. (C) Transferred T and B cells traffic to the T and B cell regions, respectively, of the spleen. Three-color immunofluorescent analysis of spleen cryostat sections 12 h after transfer of sham-pulsed Ig^{HEL} transgenic B cells. Transgenic TCR⁺ lymph node and spleen cells were labeled with CFSE and 3×10^7 total cells containing 3×10^6 CD4⁺ T cells were transferred into intact (B10.BR \times B6)F1 recipient mice, followed by Ig^{HEL}-transgenic splenocytes (9×10^6 total cells containing 3×10^6 HEL-binding cells). CFSE-labeled cells (red) localize to the white pulp. CD4-expressing cells (blue) define the T cell zone. Colocalization analysis (ImageSpace software; Molecular Dynamics) of CD4 and CFSE identifies the HEL-specific CD4⁺CFSE⁺ cells (yellow; see also Fig. 3) within the T cell zone. HEL-binding cells (green; HEL/HyHEL9-biotin/Streptavidin-Cy3) localize to the white pulp outside the T cell zone.

grammed in Fig. 1 A. Lymph node and spleen cells were isolated from 3A9 TCR-gene transgenic mice of (B6-Ly5^a \times B10.BR)F1 background (13) providing a source of Ly5^a-marked T cells specific for HEL peptide 46–61 bound to I-A^k. Approximately 3×10^7 cells, which include $\sim 3 \times 10^6$ HEL-specific CD4⁺ T cells, were transferred into normal congenic Ly5^b (B6 \times B10.BR)F1 recipients that had not been immunized, irradiated, or treated in any way that might change the lymphoid microenvironment or provide adjuvant effects. The transferred cells were distinguished from the excess of host cells by flow cytometry using antibodies specific for allotypic markers particular to the transferred cells (Ly5^a for the transgenic T cells and IgD^a for the transgenic B cells; Fig. 2). Flow cytometric analysis of the recipient mice demonstrated that HEL-specific T cells were seeded into the diverse immune repertoire at a low frequency of 1 in 1,000–2,000 splenocytes (see below), allowing us to track the cells and study their functions in a physiologically relevant context.

One day after T cell transfer, naive B cells were isolated from the spleens of Ig^{HEL} gene-transgenic mice, exposed to intact HEL at 37°C in vitro for 2 h, and washed before transferring 3×10^6 cells into each of the T cell recipient mice. The brief exposure to HEL in vitro loads the naive B cells with antigen for presentation and activates them through BCR signaling (data not shown). Alternatively, HEL-tolerant B cells were isolated from the spleens of sHEL/Ig^{HEL} double transgenic mice, yielding a population that have been chronically exposed to HEL so that they are loaded with HEL peptides without becoming activated through their BCR (36, 37). Flow cytometric analysis of the recipient mice demonstrated that HEL-specific B cells were also seeded into the repertoire at a low frequency of 1 per 1,000–2,000 cells (see below).

In the recipient mice, small numbers of HEL-specific T and B cells seed the white pulp of the spleen and migrate effectively to the T cells zones and B cell follicles, respectively (Fig. 1 C). The previously described TCR⁺ cells that express neither CD4 nor CD8 (7, 13) did not traffic to the lymphoid organs (data not shown). B cells that had been exposed to HEL in vitro before transfer were preferentially retained in the outer T cell zone, consistent with the previously described migration pattern for cells whose BCRs have recently captured antigen and signaled (4, 5). The amount of antigen that had been captured by the B cells and transferred into the recipient mice was quantitated by Western blot analysis of whole cell lysates of the antigen-pulsed naive B cells and tolerant B cells (Fig. 1 B). Approximately 2 ng of HEL is associated with the 3×10^6 B cells transferred to each mouse. This amount of antigen is 100–100,000-fold lower than the dose of antigen previously used to induce low-zone humoral tolerance (19, 20, 23, 38) or peripheral tolerance of CD4⁺ T cells in vivo (31, 39–41).

Despite the low frequency of transferred T and B cells, the lack of adjuvant and irradiation, and the small amount of antigen, HEL-pulsed naive B cells were helped to differ-

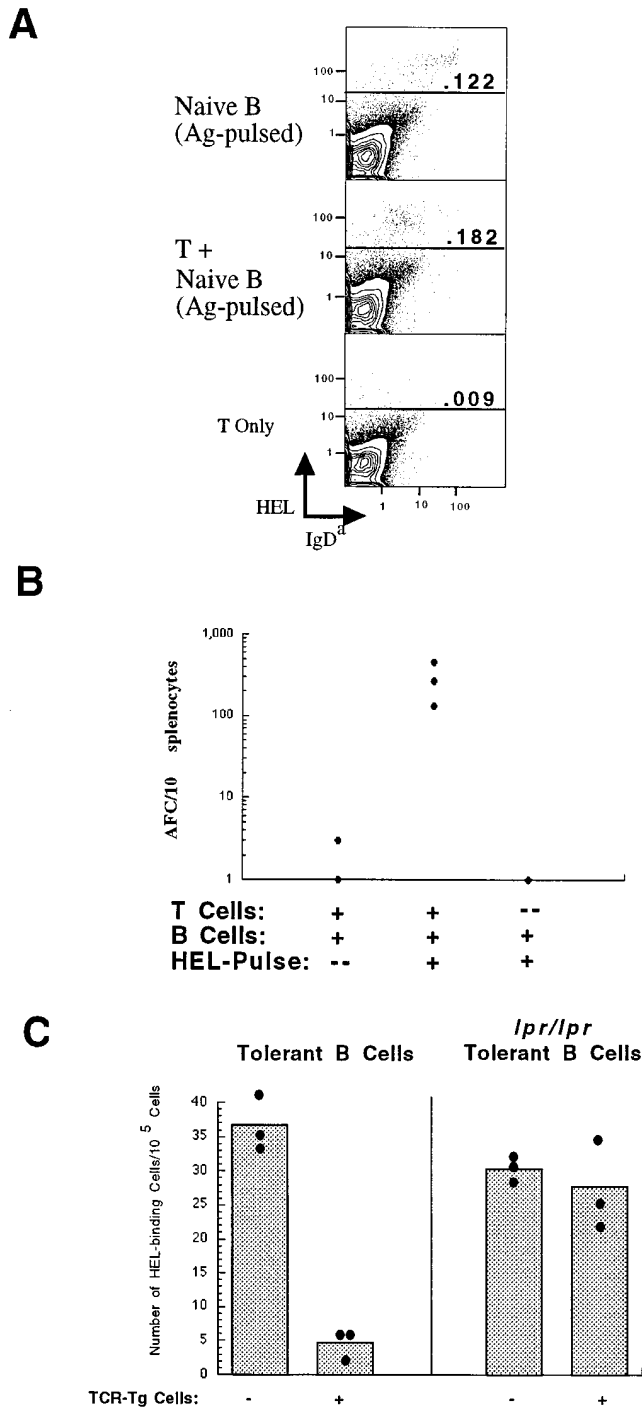


Figure 2. Fate of B cells after T–B cell interactions in vivo. (A) Antigen-pulsed, acutely activated B cells downregulate IgD in the presence of transferred T cells. Transgenic Ly5^a-marked T cells (3×10^7 total cells containing 3×10^6 CD4⁺ T cells) were transferred into intact recipient mice, followed 24 h later by transfer of purified (94% B220⁺) acutely activated B cells that had been pulsed with 1 μ g/ml HEL or sham pulsed for 2 h in vitro. 60 h after transfer, the surface phenotype of the transferred B cells in the spleen was analyzed by flow cytometry using stains for HEL binding, IgD^a, and negative gating for CD4. Each plot is representative of two or three individual recipients from each of three experiments. Similar results were obtained using B cells pulsed with 10 ng/ml HEL. (B) Antigen-pulsed, acutely activated B cells are helped by transferred T cells to become antibody-forming cells. Transfer as in A, except that mice were

entiate into antibody-forming cells by the HEL-specific T cells (Fig. 2, A and B). By 3 d after transfer, the HEL-pulsed naive B cells lose surface IgD expression in the presence, but not the absence, of HEL-specific T cells, consistent with activation (Fig. 2 A). By 5 d after transfer, HEL-specific antibody-forming cells were readily detectable in the spleen in the presence, but not the absence, of HEL-specific T cells (Fig. 2 B).

In contrast, tolerant B cells transferred under the same conditions were killed by the rare HEL-specific T cells within 5 d, but not by the excess of host T cells. Elimination of the tolerant B cells required B cell expression of the Fas molecule, as Fas-deficient B cells homozygous the *lpr* mutation were not killed (Fig. 2 C). This T cell-dependent killing of tolerant B cells demonstrates that despite their low frequency, the HEL-specific B and T cells interact efficiently in the context of a normal immune system, and that the outcome for tolerant B cells is identical to that found previously in irradiated hosts where the cells are more frequent and the microenvironment perturbed (7).

Because B–T cell interactions occurred efficiently under these circumstances, we explored the consequences of these interactions for the T cells in the recipients. 12 h after the transfer of either HEL-pulsed naive B cells or HEL-tolerant B cells, most of the HEL-specific T cells in the spleen had been induced to express the early activation marker, CD69 (Fig. 3). T cell activation was antigen specific because CD69 expression was not induced on the endogenous T cells, which are not HEL reactive (data not shown), nor on HEL-reactive T cells transferred with sham-loaded HEL-specific B cells. CD69 induction required the presence of HEL-specific B cells, as depletion of B220⁺ splenocytes from double transgenic sHEL/Ig^H donor inoculum eliminated CD69 induction on the T cells, and HEL-pulsed nontransgenic B cells were not able to induce CD69 (data not shown). Tolerant B cells selectively induced CD69 expression on lymph node T cells (Fig. 3), suggesting differences in trafficking between recently activated and tolerant cells. Very few CD69-expressing T cells were detectable in the blood after transfer of either type of B cells, suggesting that T cell activation may occur within the lymphoid organs.

Although HEL-specific B cells were required for activation of the T cells, this T cell activation was not solely due to direct presentation of antigen by HEL-specific B cells,

killed 5 d after B cell transfer. Antibody forming cells (AFC) in the spleen were quantitated by spot ELISA (66). Data are representative of two separate experiments. (C) Tolerant B cells are killed by transferred T cells via Fas-mediated lysis. Transgenic T cells were transferred as in A and B, followed by either wild-type or *lpr/lpr*-tolerant B cells (1.8×10^7 total cells containing 3×10^6 HEL-binding cells). 60 h after B cell transfer, the number of HEL-binding B cells in the spleen was analyzed by flow cytometry, using stains for HEL binding, IgD^a, and negative gating for CD4. The background value in a mouse that received no transferred B cells was zero. Dots, the number of HEL-binding B cells from the spleen of an individual recipient mouse. These results are representative of four separate experiments for the wild-type tolerant B cells, and two separate experiments for the *lpr/lpr*-tolerant B cells.

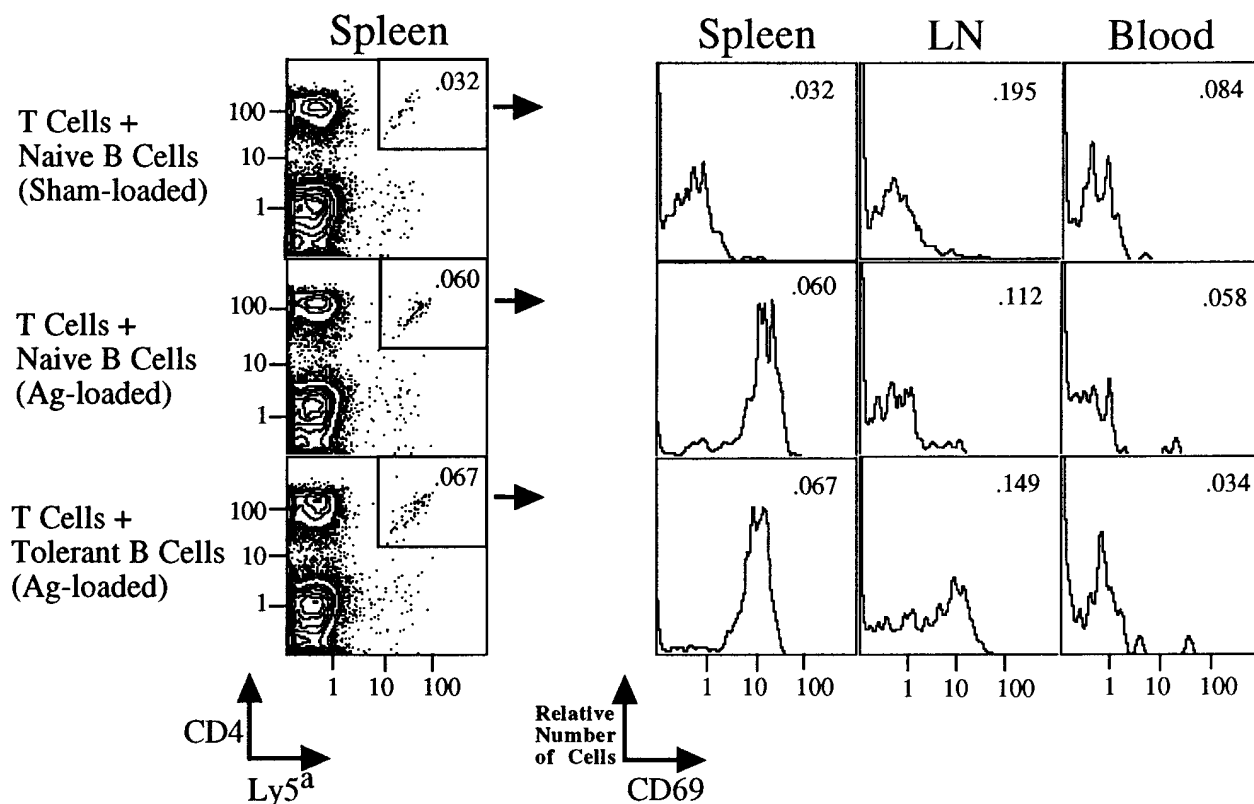


Figure 3. Transfer of antigen-pulsed HEL-specific B cells or HEL-tolerant B cells induces the activation of most transferred HEL-specific CD4⁺ T cells in the spleen within 8 h. Transfer as in Fig. 2, except that mice were killed 8 h after B cell transfer and analyzed by flow cytometry for CD4, Ly5^a, and CD69, with negative gating for B220. The histograms represent CD69 staining on the small boxed CD4⁺Ly5^{a+} population. The numbers indicate the percentage of CD4⁺Ly5^{a+} cells of total cells for each sample. The background values in a mouse that received no transferred T cells were 0.002% in the spleen, 0.004% lymph node, and 0% in blood. Each plot is representative of two or three individual recipients from each of three experiments.

but also to transfer of antigen to another APC. We distinguished T cell-endogenous APC interactions from T-B cell interactions by transferring antigen-pulsed Ig^{HEL} B cells of the H-2^{bb} MHC haplotype, which lack the I-A^k-presenting element recognized by the HEL-specific TCR. These B cells could not directly interact with HEL/I-A^k-specific T cells, but were nevertheless able to induce comparable CD69 expression on the T cells in the spleen (Fig. 4). In contrast to the spleen, tolerant H-2^{bb} B cells did not induce CD69 expression by T cells in lymph node (Fig. 4), raising the possibility that the endogenous APC responsible for this very efficient presentation of antigen transferred from B cells is resident in the spleen.

Proliferation of low frequency T cells in vivo was followed using the fluorescent dye CFSE, which has been shown to be diluted linearly with cell division in vivo (35). Although the transferred T cells remained CFSE high in the absence of antigen-pulsed B cells, many T cells became CFSE low within 3 d after transfer with either HEL-loaded naive or tolerant B cells (Fig. 5). The number of T cells that had proliferated (CFSE low) and the number that had not proliferated (CFSE high) were counted in each lymphoid tissue on days 3 and 5 after B cell transfer (Fig. 6). T cell proliferation after transfer of tolerant B cells was followed by disappearance of many of the CFSE low cells

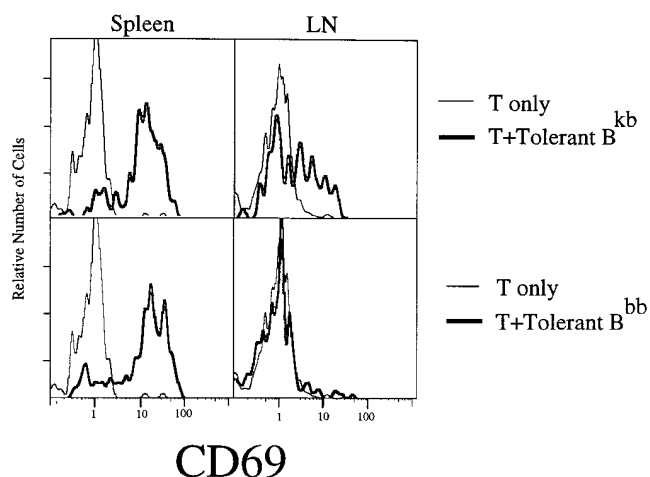


Figure 4. Activation of HEL-specific T cells in the spleen can be mediated indirectly by transfer of antigen to host APCs. Transfer as in Fig. 2, with the transfer of purified tolerant B cells (B220⁺ 86–93%) expressing MHC H-2^{kb} or H-2^{bb}. Mice were killed 12 h after B cell transfer and analyzed for CD69 expression on T cells in spleen and lymph node as in Fig. 3. *Light lines*, CD69 expression by T cells in the absence of transferred B cells; *heavy lines*, CD69 expression by T cells in the presence of transferred B cells as indicated. Each plot is representative of one of two recipients in each of two experiments. Similar CD69 expression by T cells was obtained after transfer of acutely activated HEL-pulsed naive B cells expressing H-2^{bb} in two additional experiments.

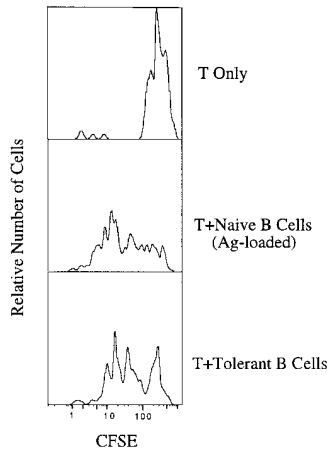


Figure 5. Many HEL-specific T cells have proliferated by 3 d after transfer of either antigen-pulsed HEL-specific or -tolerant B cells. T and B cells were transferred as in Fig. 2, except that TCR transgenic cells were labeled with CFSE before transfer. Mice were killed 60 h after B cell transfer, and CFSE fluorescence of CD4⁺Ly5⁺ splenocytes analyzed by flow cytometry. Each plot is representative of two or three recipients in each of two (HEL-pulsed naive B cells) or four (tolerant B cells) separate experiments.

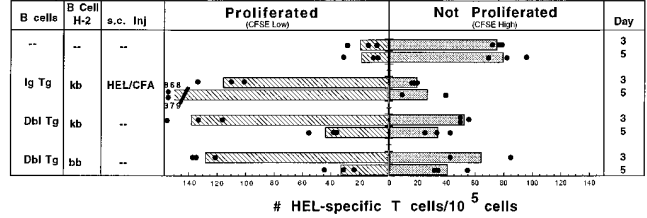
from the spleen, the lymph node, and the blood by 5 d after transfer. Transfer of H-2^{bb}-tolerant B cells resulted in a similar degree of T cell proliferation and disappearance, demonstrating that cross-presentation of antigen by endogenous APCs was sufficient to mediate the aborted proliferative response. Increasing the number of transferred tolerant B cells did not decrease the number of remaining CFSE high T cells, suggesting that the remaining cells may not be capable of proliferation.

Surprisingly, HEL-pulsed naive B cells induced a comparable cycle of T cell proliferation and disappearance from the spleen, lymph node, and blood (Figs. 5 and 7), despite the fact that the acute antigen pulse triggers BCR signaling and activates the naive B cells. In contrast, when HEL antigen was given as a depot in adjuvant, the proliferating CFSE low T cells did not disappear, but accumulated in large numbers by day 5. Transfer of HEL-pulsed B cells that lacked HEL-specific BCRs did not trigger T cell proliferation or disappearance.

The data above showed that ultralow amounts of antigen stimulated T cell proliferation and disappearance regardless of whether acutely activated or tolerant B cells were the source of antigen, and that cross-presentation of antigen transferred from the B cells to endogenous APCs could account for this aborted T cell response. To examine if direct B-T cell interactions on their own could also trigger T cell proliferation, we repeated the experiments in bone marrow chimeras that lack I-A^k on most host APCs, thus eliminating cross-presentation of antigen. For this purpose, recipient mice were constructed by lethally irradiating (B10.BR × B6)F1 mice (H-2^{kb}) and reconstituting them with parental B6 (H-2^{bb}) bone marrow that had been T cell depleted. The chimeric mice were held for 9 wk before use in these experiments to allow time for the loss of labile or radiosensitive H-2^{kb} APCs and for the establishment of H-2^{bb} bone marrow-derived APCs. The recipient mice thus should lack many I-A^k-expressing bone marrow-derived APCs, but remain tolerant to H-2^{kb} due to expression of H-2^k on radioresistant cells such as thymic epithelium.

Transfer of antigen-specific T cells with tolerant B cells

A Spleen



B Lymph Node

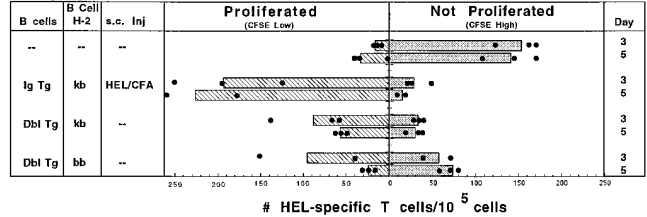


Figure 6. T cells proliferate and disappear after transfer of tolerant B cells. Transfer as in Figs. 2 and 5 with CFSE-labeled transgenic TCR⁺ cells and purified transgenic B cells (B220⁺ for all donor types 92–98%) that were I-A^{k+} (H-2^{kb}) or I-A^{k-} (H-2^{bb}) and time points taken at days 3 and 5. Dots, the value from an individual recipient; bars, the mean value for the group. *Ig Tg*, antigen-pulsed Ig^HHEL-transgenic B cells; *Dbl Tg*, double transgenic sHEL × Ig^HHEL-tolerant B cells. One group of mice was injected subcutaneously with 100 μg HEL emulsified in complete Freund's adjuvant (*HEL/CFA*) as a positive control for T cell proliferation. The number of HEL-specific T cells was analyzed by flow cytometry and then the number of CFSE high (above fluorescence channel 160) and CFSE low (below fluorescence channel 160) were counted. The number of HEL-specific T cells per 10⁵ cells for each individual was normalized to the number of nonspecific CFSE high B cells for that individual divided by the average number of nonspecific CFSE high B cells in order to correct for any small differences in injection efficiency between different recipients.

expressing H-2^{bb} or H-2^{kb} into chimeric recipients [bb(→kb)] showed that, under these circumstances, antigen presentation to the T cells depended upon B cells bearing H-2^k. Thus, HEL-specific T cells were not induced to express CD69 nor to proliferate after transfer of H-2^{bb}-tolerant B cells in bb(→kb) chimeric recipients, whereas they were triggered if the B cells expressed I-A^k-presenting molecules (Fig. 8). The absence of T cell activation or proliferation demonstrates that H-2^{bb}-tolerant B cells do not transfer antigen to residual I-A^{k+} APCs for presentation to T cells in these chimeras. Under these conditions, where antigen presentation was limited to the HEL-tolerant B cells, the T cells proliferated initially, but many of the proliferated cells disappeared by 6 d after transfer. Thus, antigen presented only by tolerant B cells was nevertheless sufficient to drive T cell activation and proliferation in vivo. The HEL-tolerant B cells were killed by the T cells as effectively as they were killed in conventional H-2^{kb} recipients (data not shown), demonstrating that priming on endogenous APCs is not required for this T cell effector function. T-B cell interactions and T cell-endogenous APC interactions induced apparently equivalent functional outcomes in T cells under these noninflammatory conditions in vivo.

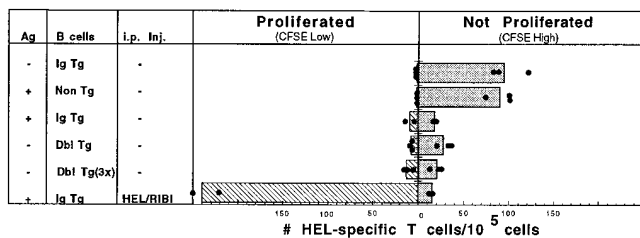


Figure 7. HEL-specific T cells disappear to the same degree after transfer of antigen-pulsed B cells, tolerant B cells, or excess tolerant B cells. Transfer as in Fig. 2 using CFSE-labeled transgenic TCR⁺ cells and unpurified splenocytes from B cell donors. *Dots*, the number of HEL-specific T cells of each phenotype from an individual recipient; *bars*, the mean value for the group. *Ig Tg*, antigen-pulsed Ig^{HEL}-transgenic B cells; *Dbl Tg*, double transgenic tolerant B cells. One group of mice was injected subcutaneously with 100 μg HEL emulsified in RIBI adjuvant (*HEL/RIBI*) as a positive control for T cell proliferation. Values are flow cytometric data analyzed as in Fig. 6.

Discussion

The results presented here demonstrate that B cell presentation of antigen to T cells can have profound effects on T cell fate in vivo, and that, together with a novel mechanism of antigen transfer to endogenous APCs, such antigen presentation may be important in limiting T cell responses to antigen in the absence of inflammation. Infrequent antigen-specific T and B cells efficiently find each other in intact recipients, in the absence of inflammation, and in the context of a normal immune repertoire, unperturbed microenvironment, and trace amounts of antigen. The consequences of these interactions differ for acutely activated naive B cells and tolerant B cells, such that the T cells help the naive B cells to become antibody-forming cells, whereas the T cells kill the tolerant B cells. In marked contrast with in vitro experiments, these direct interactions with acutely activated or tolerant B cells do not have distinct effects on T cell fate in vivo. Both direct presentation by B cells and indirect presentation by endogenous APCs induce abortive proliferation of T cells. This effect on T cells results from very efficient presentation of minute quantities of antigen. The process of concentration and presentation of such small quantities of antigen may be important in establishing or maintaining low zone tolerance, in epitope spreading during disease, and in maintaining tolerance to potential allergens.

Minute quantities of antigen (~2 ng) are transferred by B cells into recipient mice in these experiments. This small amount of antigen is nevertheless efficiently transferred to and presented by endogenous APCs. Transfer of H-2^{bb} B cells activated T cells in the spleen, which suggests that B cell-bound antigen is transferred to endogenous I-A^k-expressing APCs that then present antigen to T cells. In contrast to the spleen, tolerant H-2^{bb} B cells do not induce CD69 expression by T cells in lymph node (Fig. 4). The efficient cross-presentation of transferred antigen by endogenous APCs in the spleen and not the lymph node, as well as the lack of CD69 expression by T cells in the blood,

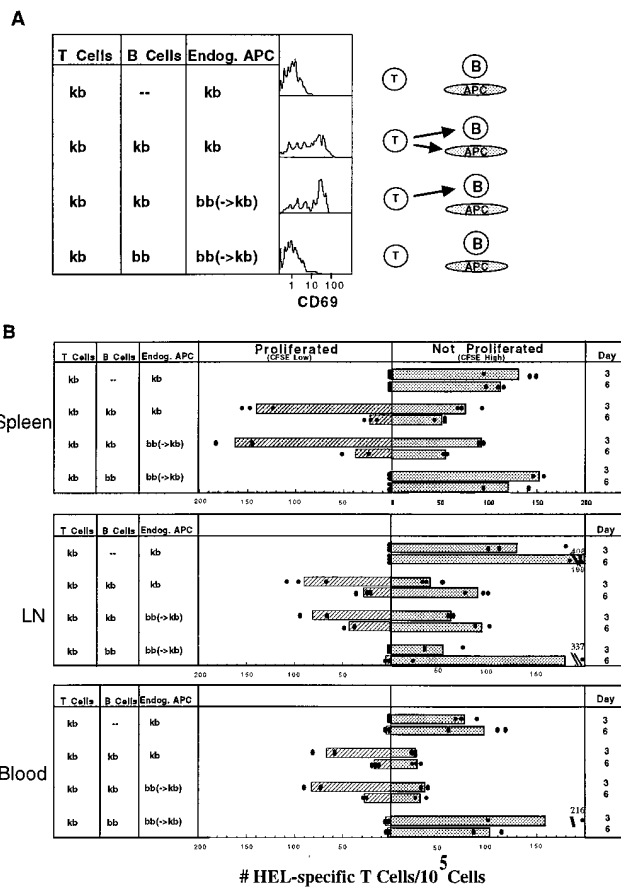


Figure 8. HEL-specific T cells are activated, proliferate, and disappear after direct interaction with tolerant B cells. (A) Expression of CD69 by HEL-specific T cells from the spleen 24 h after B cell transfer showing that antigen presentation is limited to HEL-specific B cells in the chimeric mice. Transfer as in Fig. 6 using CFSE-labeled transgenic TCR⁺ cells and double transgenic sHEL × Ig^{HEL} splenocytes containing HEL-tolerant B cells expressing either MHC H-2^{kb} (*kb*) or H-2^{bb} (*bb*). The recipient mice were either intact (B10.BR × B6)F1 mice (H-2^{kb}) expressing I-A^k on endogenous APCs (*kb*), or were I-A^k-deficient bone marrow chimeras [*bb*(→*kb*)] constructed by reconstituting lethally irradiated (B10.BR × B6)F1 mice with B6 T cell-depleted bone marrow. The chimeras were used 9 wk after reconstitution when many of the original B cells and myeloid APCs would be expected to have been replaced by new H-2^{bb} cells from the donor marrow. (B) Proliferation and disappearance of HEL-specific T cells. *Dots*, the number of HEL-specific T cells of each phenotype from an individual recipient; *bars*, the mean value for the group. Values are flow cytometric data analyzed as in Fig. 6, except that values were not normalized for injection efficiency, as there was some variation in non-specific CFSE⁺ B cell frequency among the chimeric recipients, probably due to incomplete tolerance to B cell antigens in the context of H-2^{kb}.

raises the possibility that the responsible APC is resident in the spleen, rather than one that acquires antigen in the periphery and migrates through the blood to the spleen or through the lymph to the lymph nodes. The essential property of the endogenous APC may be the ability to receive and present transferred antigen with high efficiency, a property that may be linked to its location in a particular splenic microenvironment. We are actively investigating the mechanism of antigen transfer from antigen-specific B

cells to endogenous APCs, which could be antibody mediated, such as Fc receptor or complement receptor uptake of antigen-antibody complexes, or cell mediated, such as phagocytosis of whole cells. We have identified the endogenous APC that receives antigen transferred from B cells as a labile or radiation-sensitive cell that is probably bone marrow derived, as cross presentation did not occur in radiation chimeras where bone marrow-derived cells lacked the relevant restriction element, I-A^k. Interestingly, cultured myeloid dendritic cells are not capable of T cell stimulation by re-presentation of transferred antigen from HEL-specific B cells in vitro, which suggests that neither immature nor mature activated dendritic cells mediate this activity (data not shown). Candidate APCs are marginal zone macrophages (42), migratory dendritic cells located in the bridging channels between the B cell follicles of the spleen (43), and lymphoid dendritic cells located in the T cell zone (44).

Studies in B cell-deficient mice demonstrate that B cells are not essential for the induction of peripheral T cell tolerance to some superantigens (45), the injection of microgram quantities of peptide (45), or microgram or milligram quantities of intact antigen (46, 47). These models rely on high doses of antigen that could load many types of APCs, obscuring a role for specific B cells in peripheral T cell tolerance. The one model that addressed T cell tolerance in the presence of low serum levels of antigen (>0.5 ng/ml) did not exclude a role for thymic deletion in the observed tolerance (47). B cells may be necessary for the maintenance of T cell tolerance in nonobese diabetic (NOD) mice (48) and can induce tolerance in vivo (17–22). The results presented here demonstrate that the mechanism of B cell tolerogenicity could be the induction of T cell abortive proliferation either by direct presentation of antigen or by transfer of antigen to an endogenous APCs.

Previous studies have shown that the activation state of B cells is critical for the activation of T cells in vitro, such that antigen-specific, activated B cells are effective APCs (12), whereas as unspecific, resting B cells are not (12, 49). Naive HEL-specific B cells are induced to express high levels of the costimulatory molecule B7.2 upon HEL exposure, whereas HEL-tolerant B cells are deficient in their ability to upregulate B7.2 (37, 50). As a result of differences in B7.2, antigen-activated B cells, but not tolerant B cells, induce 3A9 TCR-transgenic cells to proliferate and secrete cytokines in vitro (13). Surprisingly, both tolerant and activated HEL-specific B cells induce abortive proliferation in T cells in vivo (Figs. 5 and 7). This difference in B7.2 expression by the B cells does not seem to affect the initial proliferation of T cells in vivo, even when antigen is only presented by the tolerant B cells in the bb(→ kb) chimeric recipients. The initial proliferation of T cells in vivo may either be B7/CD28 independent or bystander APCs may provide this costimulation in *trans*, even when they cannot present the antigen. A similar, initial proliferative burst has been noted in response to peptides or superantigens in CD28^{-/-} mice (51, 52) supporting the notion that this default pathway of abortive proliferation is CD28 indepen-

dent. It is intriguing that antigen-exposed naive B cells and tolerant B cells induce an equivalent T cell abortive proliferative response in vivo despite eliciting distinct T effector functions (help versus killing). We are currently testing whether interaction with activated and tolerant B cells induces different cytokine expression by the T cells.

In these experiments, minute quantities of antigen associated with rare antigen-specific B cells elicited a profound effect on rare antigen-specific T cells. This approach contrasts with those used previously in which large quantities of antigen or superantigens were injected (22, 31, 39, 53–57) often into mice containing very high frequencies of antigen-specific T cells. The proliferation followed by disappearance over a 5-d time course that is induced by these small quanta of antigen is nevertheless remarkably similar to what has been observed in the high antigen dose models (31, 51–53, 57). The similarity between our findings using these small quanta of antigen and the previous observations using much higher doses of antigen suggest that abortive proliferation of T cells is a default mechanism for initial T cell responses to antigen. Factors that dictate whether a proliferative response will be sustained, such as TNF or other adjuvant effects, may be additive to this initial default response of abortive proliferation (55).

It seems counterintuitive that a response as potentially dangerous as T cell proliferation would be “hard wired” as a default response. The key controlling factor must be an equally hard-wired default disappearance mechanism, which prevents T cells from sustaining exponential proliferation. A likely candidate mechanism is activation-induced cell death (AICD), a Fas-mediated T cell suicide mechanism that has been shown to limit T cell proliferation in vitro and in vivo (58–62). Activated T cells express both Fas and Fas ligand, and can kill themselves by Fas-mediated lysis. The control of abortive versus sustained proliferation of T cells may be critical for the maintenance of peripheral self-tolerance. The disappearance of T cells after B cell transfer is likely to be tolerogenic, by the reduction in T cell precursor frequency. In continuing experiments, we are testing whether the disappearance is Fas mediated and whether the remaining T cells have been functionally inactivated.

B cells represent a potential threat to the maintenance of self-tolerance because of their well-characterized ability to concentrate a unique subset of antigens determined by their BCR specificity and to present these antigens to T cells (9, 10). Self-reactive B cells can present self-antigen to self-reactive T cells and so initiate autoimmune responses or contribute to epitope spreading (63, 64). Similarly, high affinity memory B cells located in the sites of antigen entry to the mucosa and the lymphoid organs concentrate antigens, migrate to T zones, and there initiate or amplify immune responses, which may include allergic responses to nonpathogenic antigens (1, 2). The physiological relevance of these phenomena is highlighted by the presence of autoreactive B cells in the T cell zones in autoimmune MLR/*lpr* mice (65) and the association of the presence of B cells with the initiation of diabetes in nonobese diabetic mice (48). T cell

abortive proliferation after encounter with antigen concentrated by B cells may provide a regulatory checkpoint that limits the effects of antigen presentation in the absence of

inflammation, and bypassing this checkpoint may result in pathogenic T cell responses in allergy and autoimmunity.

We are grateful to Drs. J. Rathmell and S. Akkaraju for helpful discussions, to Dr. Akkaraju for preparing the anti-HEL Western blot, to J. Grein for technical help, to the Stanford Shared FACS[®] Facility for support for flow cytometry, to Dr. S. Palmieri and the Cell Sciences Imaging Facility for support for confocal microscopy, and to the Research Animal Facility at Stanford for excellent animal husbandry.

This work was supported by grants AI-19512 and AI-36535 from the National Institutes of Health. S.E. Townsend was supported by a National Research Service Award from the National Institutes of Health and a Howard Hughes Medical Institute postdoctoral fellowship. C.C. Goodnow was an investigator with the Howard Hughes Medical Institute.

Address correspondence to Christopher C. Goodnow, The Medical Genome Center, John Curtin School of Medical Research, Mills Road, PO box 334, ACT 2601, Australia. Phone: 61-2-6249-3621; Fax: 61-2-6279-8512; E-mail: chris.goodnow@anu.edu.au

Received for publication 20 January 1998.

References

1. Liu, Y.J., J. Zhang, P.J.L. Lane, E.Y.T. Chan, and I.C.M. MacLennan. 1991. Sites of specific B cell activation in primary and secondary responses to T cell-dependent and T cell-independent antigens. *Eur. J. Immunol.* 21:2951-2962.
2. Liu, Y.-J., C. Barthelemy, O. de Bouteiller, C. Arpin, I. Durand, and J. Banchereau. 1995. Memory B cells from human tonsils colonize mucosal epithelium and directly present antigen to T cells by rapid upregulation of B7-1 and B7-2. *Immunity.* 2:239-248.
3. Cyster, J.G., S.B. Hartley, and C.C. Goodnow. 1994. Competition for follicular niches excludes self-reactive cells from the recirculating B-cell repertoire. *Nature.* 371:389-395.
4. Cyster, J.G., and C.C. Goodnow. 1995. Antigen-induced exclusion from follicles and anergy are separate and complementary processes that influence peripheral B cell fate. *Immunity.* 3:691-701.
5. Cook, M.C., A. Basten, and B. Fazekas de St. Groth. 1997. Outer periarteriolar lymphoid sheath arrest and subsequent differentiation of both naive and tolerant immunoglobulin transgenic B cells is determined by B cell receptor occupancy. *J. Exp. Med.* 186:631-643.
6. Mandik-Nayak, L., A. Bui, H. Noorchashm, A. Eaton, and J. Erikson. 1997. Regulation of Anti-double-stranded DNA B cells in nonautoimmune mice: localization to the T-B interface of the splenic follicle. *J. Exp. Med.* 186:1257-1267.
7. Rathmell, J.C., M.P. Cooke, W.Y. Ho, J. Grein, S.E. Townsend, M.M. Davis, and C.C. Goodnow. 1995. CD95 (Fas)-dependent elimination of self-reactive B cells upon interaction with CD4+ T cells. *Nature.* 376:181-184.
8. Rathmell, J.C., S.E. Townsend, J.C. Xu, R.A. Flavell, and C.C. Goodnow. 1996. Expansion or elimination of B cells in vivo: dual roles for CD40- and Fas (CD95)-ligands modulated by the B cell antigen receptor. *Cell.* 87:319-329.
9. Rock, K.L., B. Benacerraf, and A.K. Abbas. 1984. Antigen presentation by hapten-specific B lymphocytes: role of surface immunoglobulin receptors. *J. Exp. Med.* 160:1102-1113.
10. Lanzavecchia, A. 1985. Antigen-specific interaction between T and B cells. *Nature.* 314:537-539.
11. Metlay, J.P., E. Pure, and R.M. Steinman. 1989. Control of the immune response at the level of antigen presenting cells: a comparison of the function of dendritic cells and B lymphocytes. *Adv. Immunol.* 47:45-116.
12. Sallusto, F., and A. Lanzavecchia. 1994. Efficient presentation of soluble antigen by cultured human dendritic cells is maintained by granulocyte/macrophage colony-stimulating factor plus interleukin 4 and downregulated by tumor necrosis factor alpha. *J. Exp. Med.* 179:1109-1118.
13. Ho, W.Y., M.P. Cooke, C.C. Goodnow, and M.M. Davis. 1994. Resting and anergic B cells are defective in CD28-dependent costimulation of naive CD4+ T cells. *J. Exp. Med.* 179:1539-1549.
14. Jenkins, M.K., and R.H. Schwartz. 1987. Antigen presentation by chemically modified splenocytes induces antigen-specific T cell unresponsiveness in vitro and in vivo. *J. Exp. Med.* 165:302-319.
15. Mueller, D.L., M.K. Jenkins, and R.H. Schwartz. 1989. Clonal expansion versus functional clonal inactivation: a costimulatory signalling pathway determines the outcome of T cell antigen receptor occupancy. *Annu. Rev. Immunol.* 7:445-481.
16. Harding, F., J.G. McArthur, D. Raulet, and J. Allison. 1992. CD28-mediated signalling co-stimulates murine T cells and prevents induction of anergy in T-cell clones. *Nature.* 356:607-609.
17. Fuchs, E.J., and P. Matzinger. 1992. B cells turn off virgin but not memory T cells. *Science.* 258:1156-1159.
18. Day, M.J., A.G.D. Tse, M. Puklavec, S.J. Simmonds, and D.W. Mason. 1992. Targeting autoantigen to B cells prevents the induction of a cell-mediated autoimmune disease in rats. *J. Exp. Med.* 175:655-659.
19. Eynon, E.E., and D.C. Parker. 1992. Small B cells as antigen presenting cells in the induction of tolerance to soluble protein antigens. *J. Exp. Med.* 175:131-138.
20. Morris, S.C., A. Lees, J.M. Holmes, R.D.A. Jeffries, and F.D. Finkelman. 1994. Induction of B cell and T cell tolerance in vivo by anti-CD23 mAb. *J. Immunol.* 152:3768-3778.
21. Buhlman, J.E., T.M. Foy, A. Aruffo, K.M. Crassi, J.A. Ledbetter, W.R. Green, J.C. Xu, L.D. Shultz, D. Roopesian,

- R.A. Flavell, et al. 1995. In the absence of a CD40 signal, B cells are tolerogenic. *Immunity*. 2:645–653.
22. Saoudi, A., S. Simmonds, I. Huitinga, and D. Mason. 1995. Prevention of experimental allergic encephalomyelitis in rats by targeting autoantigen to B cells: evidence that the protective mechanism depends on changes in the cytokine response and migratory properties of the autoantigen-specific T cells. *J. Exp. Med.* 182:335–344.
 23. Ronchese, F., and B. Hausmann. 1993. B lymphocytes in vivo fail to prime naive T cells but can stimulate antigen-experienced T lymphocytes. *J. Exp. Med.* 177:679–690.
 24. Morris, S.C., A. Lees, and F.D. Finkelman. 1994. In vivo activation of naive T cells by antigen-presenting B cells. *J. Immunol.* 152:3777–3785.
 25. Gilbert, K.M., and W.O. Weigle. 1994. Tolerogenicity of resting and activated B cells. *J. Exp. Med.* 179:249–258.
 26. Bell, E.B., S.M. Sparshott, M.T. Drayson, and W.L. Ford. 1987. The stable and permanent expansion of functional T lymphocytes in athymic nude mice after a single injection of mature T cells. *J. Immunol.* 139:1379–1384.
 27. Rocha, B., and H. von Boehmer. 1991. Peripheral selection of the T cell repertoire. *Science*. 251:1225–1228.
 28. Sprent, J., M. Schaefer, M. Hurd, C.D. Surh, and Y. Ron. 1991. Mature murine B and T cells transferred to SCID mice can survive indefinitely and many maintain a virgin phenotype. *J. Exp. Med.* 174:717–728.
 29. Forster, I., R. Hirose, J.M. Arbeit, B.E. Clausen, and D. Hanahan. 1995. Limited capacity for tolerization of CD4+ T cells specific for a pancreatic beta cell neo-antigen. *Immunity*. 2:573–585.
 30. Forster, I., and I. Lieberam. 1996. Peripheral tolerance of CD4 T cells following local activation in adolescent mice. *Eur. J. Immunol.* 26:3194–3202.
 31. Kearney, E.R., K.A. Pape, D.Y. Loh, and M.K. Jenkins. 1994. Visualization of peptide-specific T-cell immunity and peripheral tolerance in vivo. *Immunity*. 1:327–339.
 32. Goodnow, C.C., J. Crosbie, S. Adelstein, T.B. Lavoie, S.J. Smith-Gill, R.A. Brink, H. Pritchard-Briscoe, J. Wotherpoon, R.H. Loblay, K. Raphael, et al. 1988. Altered immunoglobulin expression and functional silencing of self-reactive B lymphocytes in transgenic mice. *Nature*. 334:676–682.
 33. Rathmell, J.C., and C.C. Goodnow. 1994. Effects of the lpr mutation on elimination and inactivation of self-reactive B cells. *J. Immunol.* 153:2831–2842.
 34. Healy, J.I., R.E. Dolmetsch, L.A. Timmerman, J.G. Cyster, M.L. Thomas, G.R. Crabtree, R.S. Lewis, and C.C. Goodnow. 1997. Different nuclear signals are activated by the B cell receptor during positive versus negative signaling. *Immunity*. 6:419–428.
 35. Lyons, A.B., and C.R. Parish. 1994. Determination of lymphocyte division by flow cytometry. *J. Immunol. Methods*. 171:131–137.
 36. Goodnow, C.C., J. Crosbie, S. Adelstein, T.B. Lavoie, S.J. Smith-Gill, R.A. Brink, H. Pritchard-Briscoe, J.S. Wotherpoon, R.H. Loblay, K. Raphael, et al. 1988. Altered immunoglobulin expression and functional silencing of self-reactive B lymphocytes in transgenic mice. *Nature*. 334:676–682.
 37. Cooke, M.P., A.W. Heath, K.M. Shokat, Y. Zeng, F.D. Finkelman, P.S. Linsley, M. Howard, and C.C. Goodnow. 1994. Immunoglobulin signal transduction guides the specificity of B cell–T cell interactions and is blocked in tolerant self-reactive B cells. *J. Exp. Med.* 179:425–438.
 38. Mitchison, N.A. 1968. The dosage requirements for immunological paralysis by soluble proteins. *Immunology*. 15:509–530.
 39. Briner, T.J., M.-C. Kuo, K.M. Keating, B.L. Rogers, and J.L. Greenstein. 1993. Peripheral T-cell tolerance induced in naive and primed mice by subcutaneous injection of peptides from the major cat allergen Fel d I. *Proc. Natl. Acad. Sci. USA*. 90:7608–7612.
 40. Gammon, G., and E. Sercarz. 1989. How some T cells escape tolerance induction. *Science*. 342:183–185.
 41. Brocke, S., K. Gijbels, M. Allegretta, I. Ferber, C. Piercy, T. Blankenstein, R. Martin, U. Utz, N. Karin, D. Mitchell, et al. 1996. Treatment of experimental encephalomyelitis with a peptide analogue of myelin basic protein. *Nature*. 379:343–346.
 42. Martinez-Pomares, L., M. Kosco-Vilbois, E. Darley, P. Tree, S. Herren, J.-Y. Bonnefoy, and S. Gordon. 1996. Fc chimeric protein containing the cysteine-rich domain of the murine mannose receptor binds to macrophages from splenic marginal zone and lymph node subcapsular sinus and to germinal centers. *J. Exp. Med.* 184:1927–1937.
 43. De Smedt, T., B. Pajak, E. Muraille, L. Lespagnard, E. Heinen, P. De Baetselier, J. Urbain, O. Leo, and M. Moser. 1996. Regulation of dendritic cell numbers and maturation by lipopolysaccharide in vivo. *J. Exp. Med.* 184:1413–1424.
 44. Steinman, R.M., M. Pack, and K. Inaba. 1997. Dendritic cells in the T-cell areas of lymphoid organs. *Immunol. Rev.* 156:25–37.
 45. Vella, A.T., M.T. Scherer, L. Shultz, J.W. Kappler, and P. Marrack. 1996. B cells are not essential for peripheral T-cell tolerance. *Proc. Natl. Acad. Sci. USA*. 93:951–955.
 46. Phillips, J.A., C.G. Romball, M.V. Hobbs, D.N. Ernst, L. Shultz, and W.O. Weigle. 1996. CD4+ T cell activation and tolerance induction in B cell knockout mice. *J. Exp. Med.* 183:1339–1344.
 47. Baird, A.M., and D.C. Parker. 1996. Analysis of low zone tolerance induction in normal and B-cell deficient mice. *J. Immunol.* 157:1833–1839.
 48. Serreze, D.V., H.D. Chapman, D.S. Varnum, M.S. Hanson, P.C. Reifsnnyder, S.D. Richard, S.A. Fleming, E.H. Leiter, and L.D. Shultz. 1996. B lymphocytes are essential for the inhibition of T cell-mediated autoimmune diabetes: analysis of a new “speed congenic” stock of NOD.Igμnull mice. *J. Exp. Med.* 184:2049–2053.
 49. Levin, D., S. Constant, T. Pasqualini, R. Flavell, and K. Bottomly. 1993. Role of dendritic cells in the priming of CD4+ T lymphocytes to peptide antigen in vivo. *J. Immunol.* 151:6742–6750.
 50. Lenschow, D.J., A.I. Sperling, M.P. Cooke, G. Freeman, L. Rhee, D.C. Decker, G. Gray, L.M. Nadler, C.C. Goodnow, and J.A. Bluestone. 1994. Differential up-regulation of the B7-1 and B7-2 costimulatory molecules after Ig receptor engagement by antigen. *J. Immunol.* 153:1990–1997.
 51. Kundig, T.M., A. Shahinian, K. Kawai, H.-W. Mittrucker, E. Sebзда, M.F. Bachmann, T.W. Mak, and P.S. Ohashi. 1996. Duration of TCR stimulation determines costimulatory requirement of T cells. *Immunity*. 5:41–52.
 52. Mittrucker, H.-W., A. Shahinian, D. Bouchard, T.M. Kundig, and T.W. Mak. 1996. Induction of unresponsiveness and impaired T cell expansion by staphylococcal enterotoxin B in CD28-deficient mice. *J. Exp. Med.* 183:2481–2488.
 53. Kawabe, Y., and A. Ochi. 1990. Selective anergy of Vβ28+, CD4+ T cells in staphylococcus enterotoxin b-primed mice. *J. Exp. Med.* 172:1065–1070.
 54. Liblau, R.S., R. Tisch, K. Shokat, X. Yang, N. Dumont, C.C. Goodnow, and H.O. McDevitt. 1996. Intravenous in-

- jection of soluble antigen induces thymic and peripheral T-cells apoptosis. *Proc. Natl. Acad. Sci. USA.* 93:3031–3036.
55. Vella, A.T., J.E. McCormack, P.S. Linsley, J.W. Kappler, and P. Marrack. 1995. Lipopolysaccharide interferes with the induction of peripheral T cell death. *Immunity.* 2:261–270.
 56. Singer, G.G., and A.K. Abbas. 1994. The Fas antigen is involved in peripheral but not thymic deletion of T lymphocytes in T cell receptor transgenic mice. *Immunity.* 1:365–371.
 57. Webb, S., C. Morris, and J. Sprent. 1990. Extrathymic tolerance of mature T cells: clonal elimination as a consequence of immunity. *Cell.* 63:1249–1256.
 58. Lenardo, M.J. 1991. Interleukin-2 programs mouse alpha/beta T lymphocytes for apoptosis. *Nature.* 353:858–862.
 59. Dhein, J., H. Walczak, C. Baumler, K.-M. Debatin, and P.H. Krammer. 1995. Autocrine T-cell suicide mediated by APO-1/(Fas/CD95). *Nature.* 373:438–441.
 60. Brunner, T., R.J. Mogil, D. LaFace, N.J. Yoo, A. Mahboubi, F. Echeverri, S.J. Martin, W.R. Force, D.H. Lynch, C.F. Ware, and D.R. Green. 1995. Cell-autonomous Fas (CD95)/Fas-ligand interaction mediates activation-induced apoptosis in T-cell hybridomas. *Nature.* 373:441–444.
 61. Ju, S.-T., D.J. Panka, H. Cui, R. Ettinger, M. El-Khatib, D.H. Sherr, B.Z. Stanger, and A. Marshak-Rothstein. 1995. Fas(CD95)/FasL interactions required for programmed cell death after T cell activation. *Nature.* 373:444–448.
 62. Van Parijs, L., A. Ibraghimov, and A.K. Abbas. 1996. The roles of costimulation and Fas in T cell apoptosis and peripheral tolerance. *Immunity.* 4:321–328.
 63. Mamula, M.J., S. Fatenejad, and J. Craft. 1994. B cells process and present lupus autoantigens that initiate autoimmune T cell responses. *J. Immunol.* 152:1453–1461.
 64. Fatenejad, S., M.J. Mamula, and J. Craft. 1993. Role of intermolecular/intrastructural B- and T-cell determinants in the diversification of autoantibodies to ribonucleoprotein particles. *Proc. Natl. Acad. Sci. USA.* 90:12010–12014.
 65. Jacobson, B.A., D.J. Panka, K.-A. Nguyen, J. Erikson, A.K. Abbas, and A. Marshak-Rothstein. 1995. Anatomy of autoantibody production: dominant localization of antibody-producing cells to T cell zones in fas-deficient mice. *Immunity.* 3:509–519.