


ATP2B1 gene polymorphisms rs2681472 and rs17249754 are associated with susceptibility to hypertension and blood pressure levels

A systematic review and meta-analysis

Ming Xie, MS^a, Shuqian Yuan, MS^a, Yuan Zeng, MS^a, Chanjuan Zheng, PhD^a, Yide Yang, PhD^{a,b,*} , Yanhui Dong, PhD^b, Quanyuan He, PhD^a

Abstract

Objective: The present study aimed to conduct a systematic review and meta-analysis to evaluate the relationships between *ATP2B1* gene polymorphisms with blood pressure (BP) level and susceptibility to hypertension.

Methods: PubMed, Web of Science, Embase and China National Knowledge Infrastructure (CNKI) Databases were systematically searched by 2 independent researchers to screen studies on *ATP2B1* gene polymorphisms and BP related phenotypes. The records retrieval period was limited from the formation of the database to March 4, 2021. Pooled odds ratios (ORs) or β and their 95% confidence intervals (95%CI) were calculated to assess the association between *ATP2B1* gene polymorphisms and the risk of hypertension or BP levels. Publication bias and sensitivity analysis were conducted to find potential bias. All the statistical analysis were conducted with Stata version 11.0 software.

Results: A total of 15 articles were ultimately included in the present study, including 15 polymorphisms of *ATP2B1* gene. Nine articles (N=65,362) reported the polymorphism rs17249754, and 7 articles (N=91,997) reported rs2681472 (both loci were reported in 1 article). Meta-analysis showed that rs17249754 (G/A) and rs2681472 (A/G) were associated with the susceptibility to hypertension (rs17249754: OR=1.19, 95%CI: 1.10–1.28; rs2681472: OR=1.15, 95%CI: 1.12–1.17), and were positively associated with systolic BP (SBP) and diastolic blood pressure (DBP) (rs17249754: SBP, β =1.01, 95%CI: 0.86–1.16, DBP, β =0.48, 95%CI: 0.30–0.66; rs2681472: SBP, β =0.92, 95%CI: 0.77–1.07, DBP, β =0.50, 95%CI: 0.42–0.58) in the additive genetic model. Subgroup analysis stratified by race, population, sample size, and BP measurement method revealed that the association between A allele in rs2681472 polymorphism and risk of hypertension was slightly stronger in European (EUR) populations (OR=1.16, 95%CI: 1.13–1.20) than in East Asians (OR=1.14, 95%CI: 1.10–1.17). While in East Asians, relation between rs17249754 with risk of hypertension (OR=1.19, 95%CI: 1.10–1.28) is stronger than rs2681472 (OR=1.14, 95%CI: 1.10–1.17).

Conclusions: Our study demonstrated that *ATP2B1* gene polymorphism rs2681472 and rs17249754 were associated with BP levels and the susceptibility to hypertension.

Abbreviations: BP = blood pressure, DBP = diastolic blood pressure, EUR = European, HTN = hypertension, SBP = systolic blood pressure.

Keywords: *ATP2B1*, gene, hypertension, meta-analysis, polymorphism

1. Introduction

Hypertension, defined as systolic blood pressure (SBP) ≥ 140 mm Hg or diastolic blood pressure (DBP) ≥ 90 mm Hg, is one of the

most common cardiovascular diseases.^[1] According to the Global Burden of Disease Study 2019, the number of deaths attributed to high SBP was 10.8 million.^[2] Hypertension is a

Editor: Mohammed Nader Shalaby.

This work was supported by the National Natural Science Foundation of China (Grant No. 81903336 to Yide Yang), the Hunan Provincial Natural Science Foundation of China (Grant No. 2019JJ50376 to Yide Yang) and the China Postdoctoral Science Foundation (National Postdoctoral Program for Innovative Talent, BX20200019 to Yanhui Dong). The funders had no role in the design, analysis, or writing of this article.

The authors have no conflicts of interest to disclose.

All data generated or analyzed during this study are included in this published article [and its supplementary information files].

^a Key Laboratory of Molecular Epidemiology of Hunan Province, School of Medicine, Hunan Normal University, Changsha, ^b Institute of Child and Adolescent Health, School of Public Health, Peking University Health Science Center, Beijing, China.

* Correspondence: Yide Yang, School of Medicine, Hunan Normal University, Changsha, Hunan Province, 410081, China (e-mail: yangyide2007@126.com).

Copyright © 2021 the Author(s). Published by Wolters Kluwer Health, Inc.

This is an open access article distributed under the terms of the Creative Commons Attribution-Non Commercial License 4.0 (CCBY-NC), where it is permissible to download, share, remix, transform, and buildup the work provided it is properly cited. The work cannot be used commercially without permission from the journal.

How to cite this article: Xie M, Yuan S, Zeng Y, Zheng C, Yang Y, Dong Y, He Q. *ATP2B1* gene polymorphisms rs2681472 and rs17249754 are associated with susceptibility to hypertension and blood pressure levels: a systematic review and meta-analysis. *Medicine* 2021;100:15(e25530).

Received: 4 December 2020 / Received in final form: 21 March 2021 / Accepted: 23 March 2021

<http://dx.doi.org/10.1097/MD.00000000000025530>

multifactorial disease caused by genetic and environmental factors, interactions between genes, and interactions between genes and acquired environmental factors.^[3] Besides being a major risk factor for stroke, coronary heart disease, congestive heart failure, and chronic kidney disease, hypertension is one of the most important risk factors for morbidity and death.^[4,5] Primary hypertension is a common but complex disease influenced by genetic, environmental, and lifestyle factors,^[6,7] including age, obesity, and poor lifestyle (including high salt intake, smoking, alcohol consumption, and lack of physical activity).^[5,8–12] Genetic factors play an important role in the development of hypertension and blood pressure (BP) levels; the heredity of BP is estimated to be approximately 40% to 60%.^[13] Therefore, it is important to demonstrate the relationship between genetic mutations and BP phenotypes.

ATP2B1 is one of the most studied genes associated with the risk of hypertension or BP.^[14–16] *ATP2B1* is located on chromosome 12q21.3, encoding plasma membrane Ca²⁺-ATPase isoform 1 (also known as *PMCA1*), which is ubiquitous in tissues and transports Ca²⁺ into the cell, maintaining the normal intracellular Ca²⁺ level.^[17,18] With the great achievements in hypertension-related genome-wide association studies (GWAS), many genetic risk factors for hypertension have been identified, including single nucleotide polymorphisms (SNPs) in the *ATP2B1* gene. A large meta-analysis of GWAS performed by the Cohorts for Heart and Aging Research in Genome Epidemiology (CHARGE) consortium found that *ATP2B1* polymorphism rs2681472 is significantly related to SBP, DBP, and risk of hypertension in Europe.^[19] In East Asia, a Korean Association Resource (KARE)-based GWAS showed that rs17249754 near the *ATP2B1* gene is closely related to SBP.^[20] Later, the Japanese Millennium Genome Project for Hypertension found that *ATP2B1* rs11105378 had the most significant association with the risk of hypertension.^[21] In East Africa, a Ugandan GWAS based on young children and adolescents showed that *ATP2B1* rs17249754 is associated with SBP and DBP.^[22]

Based on GWAS, many confirmatory or replication studies have found that *ATP2B1* gene polymorphisms are associated with blood pressure or the risk of hypertension.^[23–25] However, these results have been inconsistent.^[26,27] A case-control study in Spain found that the *ATP2B1* polymorphisms rs17249754 and rs2681472 were not associated with the risk of hypertension.^[28] A recent report from Lithuania showed that *ATP2B1* rs2681472 was not associated with the risk of hypertension in children and adolescents.^[29]

Considering the inconsistent and inclusive results in different studies regarding the associations between *ATP2B1* polymorphisms and BP-related phenotypes, we conducted a systematic review and meta-analysis to comprehensively demonstrate the association between *ATP2B1* polymorphisms and susceptibility to hypertension or BP levels in the present study, and calculated the pooled estimates to assess the associations.

2. Methods

2.1. Ethical approval

This meta-analysis was based entirely on previous published studies which had declared ethical approvals and no original clinical raw data was collected or utilized, thereby ethical approval was not required for this study.

2.2. Literature search strategy

PubMed, Embase, Web of Science, and China National Knowledge Infrastructure (CNKI) databases were searched from their establishment dates to March 4, 2021. The language was limited to Chinese or English, regardless of the region. Studies on *ATP2B1* polymorphisms, blood pressure levels, and susceptibility to hypertension were collected. The search terms included any of the following: “*ATP2B1*,” “Plasma membrane calcium-transporting ATPase 1,” “*PMCA*,” “*PMCA1*,” or “plasma membrane Ca²⁺-ATPase 1b” as well as “hypertension,” “HTN,” “blood pressure,” “SBP,” or “DBP.” We systematically summarized the genetic polymorphisms in the *ATP2B1* gene related to blood pressure phenotypes that have been reported in the literature and supplemented the relevant literature. Supplementary relevant literature was searched in PubMed’s dbSNP database (rs2681472 and rs17249754, the 2 most-studied polymorphisms) (<https://www.ncbi.nlm.nih.gov/snp>). The present study was conducted according to the Cochrane Collaboration and Preferred Reporting Items for Systematic Reviews and Meta-Analyses 2009 guidelines for meta-analysis and systematic review.^[30]

2.3. Study selection

Studies were eligible if the following criteria were met:

1. studies on the association of *ATP2B1* gene polymorphisms with blood pressure phenotypes;
2. studies that reported the following estimates: odds risk (OR) and 95% confidence interval (95%CI) or β and standard deviation (SD);
3. high blood pressure in children or hypertension in adults were clearly defined.

The exclusion criteria were as follows:

1. studies related to the association of *ATP2B1* gene polymorphisms with nonhypertensive phenotypes;
2. studies lacking OR and 95%CI or β and SE;
3. review and duplicate studies.

2.4. Data extraction and quality assessment

Literature retrieval, screening, and data extraction were completed independently by 2 researchers, in strict accordance with the established inclusion and exclusion criteria. Data extraction was checked for consistency by a third supervising researcher until the final consistent results of data extraction were obtained. The extracted information included:

1. basic information of the included literature, including the first author and year of publication;
2. basic information of the study subjects, including population (adults or children), ethnicity, number of cases and controls;
3. mean SBP and DBP, method of blood pressure measurement (mercury sphygmomanometer or electronic sphygmomanometer);
4. phenotypes of blood pressure and outcome indicators: hypertension (OR and 95%CI) and SBP/DBP (β and SE);
5. risk alleles and covariates.

For the quality assessment, the 2 investigators used the Newcastle–Ottawa Scale (NOS)^[31] to independently evaluate the quality of the included literature and cross-check the results.

The full score was 9 points, and studies with a score of at least 5 points were included.^[32]

2.5. Statistical analysis

Meta-analysis was performed using Stata version 11.0 (Stata Corp., College Station, TX) and OR with 95%CI or β with SE were pooled under the additive model. Heterogeneity test was performed using Cochrane Q test. When $I^2 \geq 50\%$ and $P \leq .05$, it was considered to show moderate or high heterogeneity among the included studies, then the random effect model was selected. When $I^2 < 50\%$ and $P > .05$, no significant heterogeneity existed between the studies and a fixed effect model was used.^[33] Sensitivity analysis was used to evaluate the robustness of the results of the included studies. The effect values of the remaining studies were calculated and compared with the total effect estimates by eliminating one study after another, to measure the sensitivity and robustness of the results. If a study was excluded, there was a significant difference between the remaining results and the total effect value, showing the high sensitivity and low robustness of the results, and vice versa. Publication bias was tested using funnel plot and Egger test. Egger test sets the standardized effect value as Y (the dependent variable) and the precision of the effect value as X (the independent variable), establishing a linear regression equation to test publication bias. If the intercept term of the regression equation was close to 0, the publication bias was considered small, and $P < .05$, was considered as showing no publication bias. If publication bias

existed, publication bias was corrected by conducting a trim and fill analysis.^[34] In this study, the test level α was set at 0.05. Pairwise linkage disequilibrium (LD) was estimated using Haploview (version 4.2) (Broad Institute of MIT and Harvard, Cambridge, MA; <http://www.broad.mit.edu/mpg/haploview/>).

3. Results

3.1. Literature search

A total of 893 publications were retrieved from the PubMed, Embase, Web of Science, and CNKI databases. After screening the title and abstract of each article, 328 records were excluded as duplicate records, and 534 records were excluded as irrelevant articles. After assessing the full text, 3 records were removed for duplicate data and 13 for incomplete results. Finally, 15 articles were included in the present meta-analysis. A flowchart of the screening process is presented in Figure 1. A total of 15 polymorphisms of the *ATP2B1* gene were reported for their associations with blood pressure phenotypes in these articles, namely rs17249754, rs2681472, rs2681492, rs10858911, rs1401982, rs2070759, rs2854371, rs3741895, rs11105357, rs957525, rs11105358, rs12579302, rs11105364, rs7136259, and rs11105354. Pairwise linkage disequilibrium (LD) among 15 SNPs in the *ATP2B1* gene is shown in Figure 2. We found that rs17249754 and rs2681472 were in strong linkage disequilibrium ($r^2=0.95$). We obtained 9 articles related to *ATP2B1* rs17249754 and blood pressure and 7 articles related to

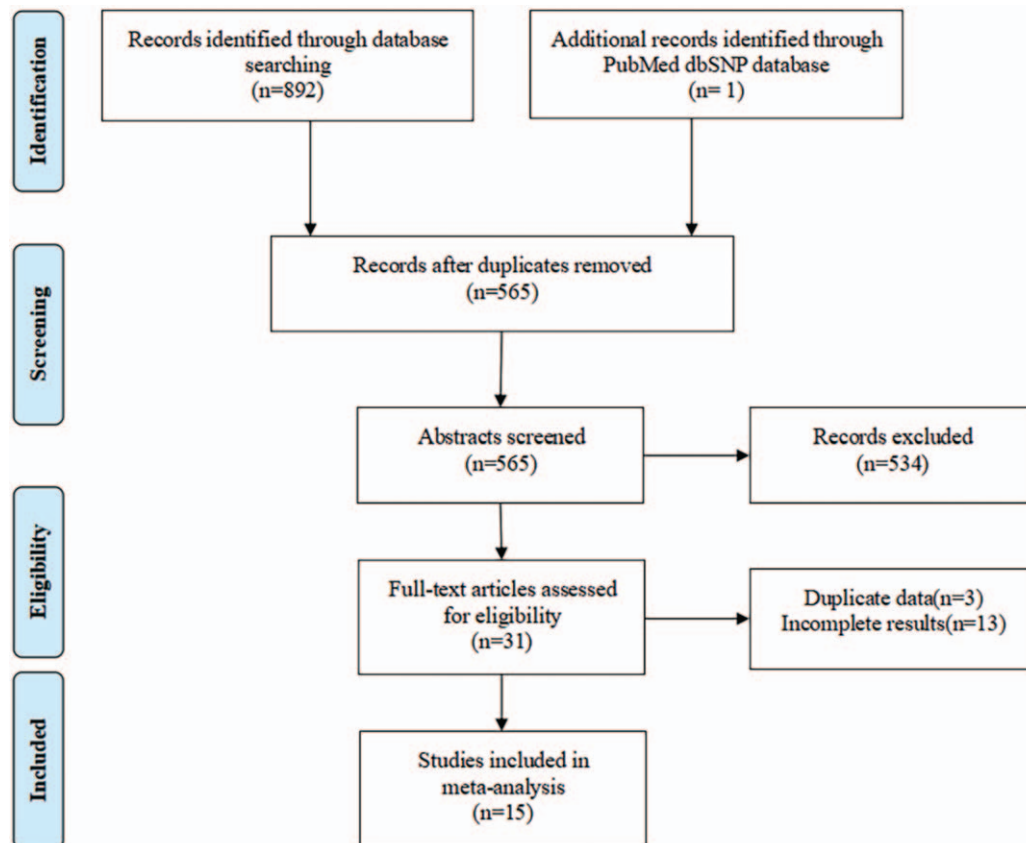


Figure 1. Flow diagram of the process of selection of articles.

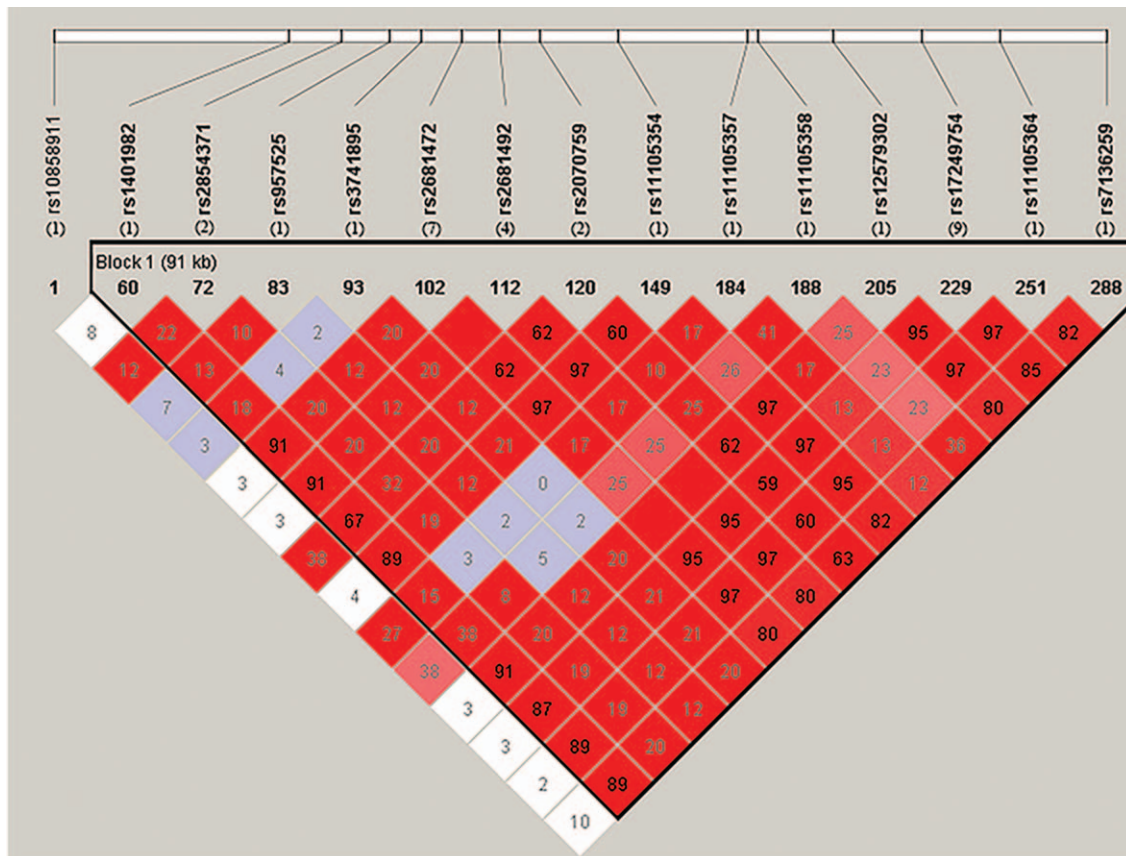


Figure 2. Pairwise linkage disequilibrium (LD) among 15 SNPs in *ATP2B1* gene. The number below the SNPs was the number of papers reported the SNP in this meta-analysis. Data from 1000 Genomes Project (<https://www.internationalgenome.org>), we used the data of people of Chinese Han Ethnicity from Beijing in this project. LD was estimated using Haploview version 4.2 (<http://www.broad.mit.edu/mpg/haploview/>).

rs2681472 (1 study involving both polymorphisms). A total sample size of 65,362 for rs17249754 and 91997 for rs2681472. Since Chen Liu,^[35] Fumihiko Takeuchi,^[24] Daniel Levy,^[19] and Sandrita Simonyte^[29] all reported 2 different studies in their papers, each of which could be considered as an independent study, 19 studies were included in this analysis.

3.2. Characteristics of studies included

Among the 19 included studies, 13 studies were conducted in East Asia (including China, Japan, and Korea), 1 in West Asia, 4 in Europe, and 1 in a global population. Three studies involved children and adolescents, and 16 articles involved adults. The risk/nonrisk alleles for the rs17249754 polymorphism were G/A, and the risk/nonrisk alleles for the rs2681472 polymorphism were A/G or T/C. The quality of the literature was evaluated using the NOS case-control study quality assessment scale, and all quality assessment scores were more than 6 points. The basic characteristics of the included studies and the quality scores of these studies are shown in Table 1.

3.3. Heterogeneity test and meta-analysis results

Heterogeneity analysis of rs17249754 in association with hypertension, SBP, and DBP revealed that the association of rs17249754 with hypertension and DBP was heterogeneous in

different studies ($I^2 > 50\%$), which was analyzed using a random-effect model. The rs17249754 G allele was associated with increased susceptibility to hypertension (OR=1.19, 95%CI: 1.10–1.28, $P < .001$) and was positively associated with both SBP ($\beta = 1.01$, 95%CI: 0.86–1.16, $P < .001$) and DBP ($\beta = 0.48$, 95%CI: 0.30–0.66, $P < .001$). The association between rs2681472 and the BP phenotype was less heterogeneous ($I^2 < 50\%$), and a fixed-effect model was chosen. The rs2681472 A allele was associated with an increased risk of hypertension (OR=1.15, 95%CI: 1.12–1.17, $P < .001$), and SBP ($\beta = 0.92$, 95%CI: 0.77–1.07, $P < .001$) and DBP ($\beta = 0.50$, 95%CI: 0.42–0.58, $P < .001$) were positively correlated (Fig. 3).

3.4. Subgroup analysis

Subgroup analysis was performed by race, population, sample size, and blood pressure measurements. The association between the A allele in the rs2681472 polymorphism and the risk of hypertension was slightly stronger in European (EUR) populations (OR=1.16, 95%CI: 1.13–1.20, $P < .001$) than in East Asians (OR=1.14, 95%CI: 1.10–1.17, $P < .001$). The high heterogeneity of the *ATP2B1* rs17249754 polymorphism with hypertension and DBP in different studies may be due to differences in blood pressure measurements and differences in the population (children, adolescents, or adults). In East Asians, the relationship between rs17249754 and risk of hypertension

Table 1

Characteristics of included studies in the meta-analysis and quality assessment.

Author	Year	Country	Ethnicity	Population	Sample size		Technique for BP measurement	SBP (Mean±SD, mm Hg)	DBP (Mean±SD, mmHg)	Phenotype	OR(95%CI) or β(SE)	ATP2B1 SNP	Risk/Non risk allele	Adjustment	NOS
					Cases	Controls									
Xi B ^[16]	2014	China	East Asian	Children and adolescents	619	2458	Mercury sphygmomanometer	Cases:125.7±10.6 Controls:101.6±10.3	Cases:79.5±8.5 Controls:63.7±7.8	HTN	1.25 (1.08,1.44)	rs17249754	GA	1, 2, 4	8
Liu C(BJ) ^[35]	2010	China	East Asian	Adults	1414	181	Electronic sphygmomanometer	147.5±24.4	82.8±11.5	SBP DBP	0.48 (0.21) -0.08 (0.18)	rs2681472	AG	1, 2, 4, 6 1, 2, 4, 6	6
Liu C(SH) ^[35]	2010	China	East Asian	Adults	1264	369	Electronic sphygmomanometer	138.6±23.8	80.5±11.6	HTN	0.61 (0.86) 0.53 (0.42)	rs2681472	AG	2, 1, 5, 4	6
Takeuchi F(JPN) ^[24]	2010	Japan	East Asian	Adults	3697	7283	NA	NA	NA	DBP	0.32 (0.40) 0.99 (0.18)	rs2681472	AG	2, 3, 4	8
Takeuchi FEUR ^[24]	2010	Japan	European	Adults	63659	NA	NA	NA	NA	HTN	1.10 (1.04,1.17) 0.85 (0.13)	rs2681472	AG	2, 3, 4	8
Hong KW ^[36]	2010	Korea	East Asian	Adults	2461	1473	NA	129.24±17.69	82.70±11.63	SBP DBP	0.50 (0.08) 1.16 (1.12,1.21)	rs17249754	GA	5, 2, 1, 4	8
Wang Y ^[25]	2013	China	East Asian	Adults	2831	1987	Mercury sphygmomanometer	133.1±21.0	84.5±12.3	HTN	1.17 (1.05,1.29) 1.20 (1.10,1.32)	rs17249754	GA	1, 2, 3, 4	7
Tabara Y ^[21]	2010	Japan	East Asian	Adults	2687	2719	NA	NA	NA	SBP	1.31 (0.44) 0.82 (0.28)	rs2681472	AG	1, 2, 3, 4, 7	8
Lin Y ^[27]	2011	China	East Asian	Adults	1692	1168	Mercury sphygmomanometer	Cases:157.41±19.94 Controls:109.91±6.72	Cases:91.77±11.52 Controls:66.09±6.15	HTN	1.21 (1.13,1.30) -0.01 (0.50)	rs2681472	AG	2, 1, 4	8
Qi Y ^[37]	2013	China	East Asian	Adults	1009	756	Mercury sphygmomanometer	Cases:147.31±16.52 Controls:109.76±17.97	Cases:89.09±15.92 Controls:71.37±11.43	HTN	1.01 (0.29) 1.01 (0.87,1.18)	rs17249754	GA	2, 1, 4	6
Jamshidi J ^[26]	2018	Iran	West Asian	Adults	200	200	NA	Cases:140.59±23.42 Controls:113.22±9.96	Cases:84.86±11.89 Controls:72.12±8.55	HTN	1.23 (1.07,1.41)	rs2681472	T/C	1, 2	6
Kato N ^[38]	2011	Japan	East Asian	Adults	7074	14644	NA	NA	NA	SBP	1.05 (0.54,2.02)	rs2681472	GA	NA	8
Ley D (CHARGE) ^[19]	2009	America	European	Adults	9880	19156	NA	NA	NA	DBP	1.17 (0.13) 0.58 (0.08)	rs17249754	GA	NA	8
Ley D (Global) ^[19]	2009	America	Global	Adults	34433	NA	NA	NA	NA	DBP	0.64 (0.12) 1.17 (1.10,1.24)	rs2681472	AG	1, 2, 3, 4	8
Miyaki K ^[39]	2011	Japan	East Asian	Adults	261	474	Electronic sphygmomanometer	Cases:147.8±13.2 Controls:120.1±10.3	Cases:91.1±8.6 Controls:73.5±8.0	HTN	0.36 (0.12) 1.14 (1.05,1.23)	rs2681472	AG	1, 2, 3, 4	8
Cho YS ^[20]	2009	Korea	East Asian	Adults	1968	4451	NA	NA	NA	HTN	2.12 (1.22,3.70)	rs17249754	GA	2, 4, 8, 9	7
Lu X ^[40]	2015	China	East Asian	Adults	8128	14768	NA	NA	NA	SBP	1.06 (0.20) 0.63 (0.14)	rs17249754	GA	2, 1, 5	8
Simonyte S(Boys) ^[29]	2018	Lithuania	European	Children and adolescents	143	170	Electronic sphygmomanometer	123.20±16.13	64.34±7.99	HTN	1.03 (0.15) 0.52 (0.08)	rs17249754	GA	2, 3, 1, 4	8
Simonyte S(Girls) ^[29]	2018	Lithuania	European	Children and adolescents	94	239	Electronic sphygmomanometer	116.92±12.61	65.61±7.99	HTN	1.09 (1.05,1.12) 1.09 (0.67,1.75)	rs2681472	AG	4, 10	8

BJ = Beijing, EUR = European, HTN = hypertension, JPN = Japanese, SH = Shanghai, Adjustment:1: sex, 2: age, 3: age², 4: body mass index (BMI), 5: region, 6: hypertension status, 7: cohort, 8: salt intake levels, 9: energy intake levels, 10: waist; NA: not available.

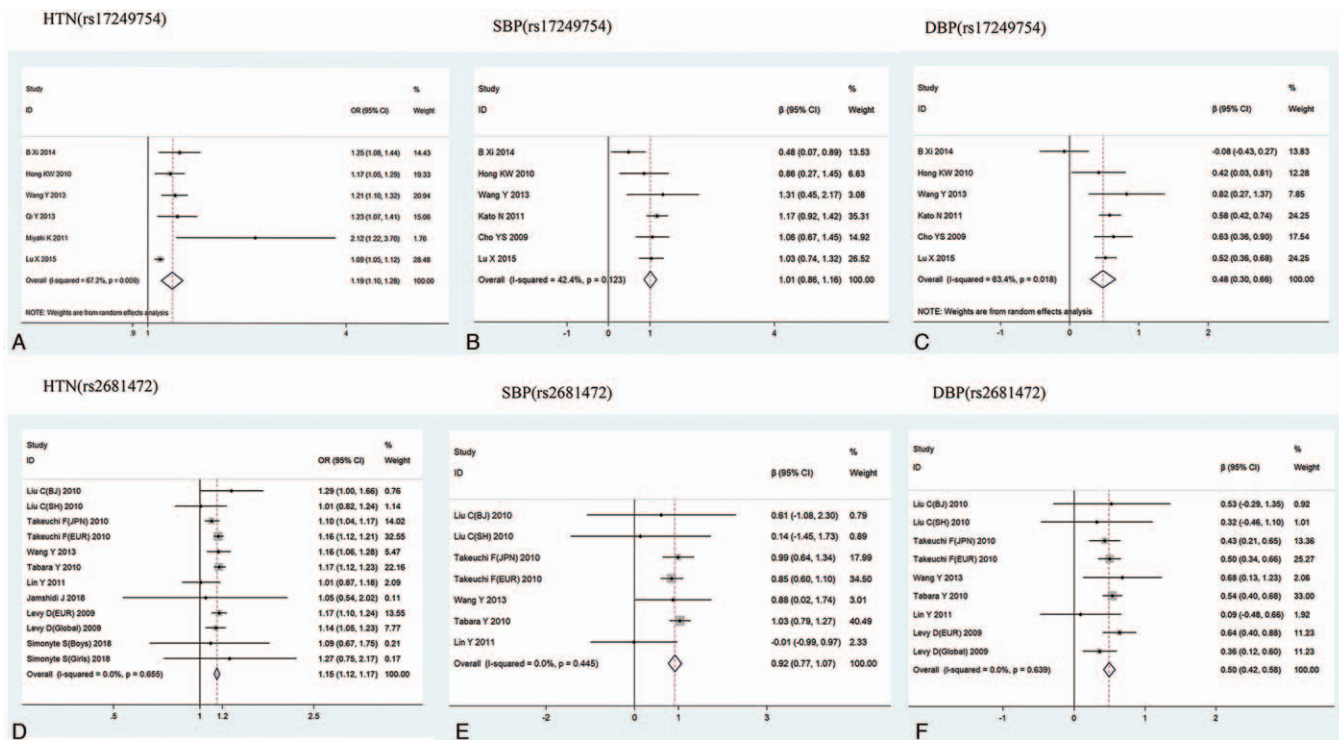


Figure 3. Meta-analysis of the association of *ATP2B1* rs17249754 and rs2681472 with hypertension, SBP, and DBP.

(OR = 1.19, 95%CI: 1.10–1.28, $P < .001$) was stronger than that between rs2681472 (OR = 1.14, 95%CI: 1.10–1.17, $P < .001$) (Table 2).

3.5. Sensitivity analysis and publication bias

After excluding the studies one by one, we found that the effect values of the remaining studies were not significantly different from the total effect value, which could be because the sensitivity is relatively small and the combined result is relatively stable. The results of the meta-analysis were unlikely to be influenced by any single study (Fig. 4). A significant asymmetry in the funnel plots was observed between studies on rs17249754 and hypertension (Fig. 5A), suggesting the existence of publication bias. The publication bias between studies on rs17249754 and hypertension was statistically significant when subjected to Egger test ($t = 10.13$, $P = .001$). We then corrected the publication bias by conducting a trim and fill analysis (adjusted OR: 1.13, 95%CI: 1.05–1.21, $P = .001$), which was slightly lower than the pre-correction effect value, but the direction of the effect estimates did not change. The funnel plots of studies on rs17249754 and SBP or DBP were symmetrically distributed (Fig. 5B–C), as well as the funnel plots of studies about rs2681472 and SBP, DBP, or risk of hypertension (Fig. 5D–F). In their Egger tests, the P values were all $> .05$, which suggested that there was no significant publication bias.

4. Discussion

To our knowledge, our study is the first to comprehensively evaluate the association between *ATP2B1* polymorphisms and blood pressure phenotypes. Fifteen polymorphisms of the

ATP2B1 gene were reported regarding their associations with blood pressure phenotypes, with rs17249754 and rs2681472 being the most commonly reported in studies. The results of the meta-analysis indicated that G allele carriers of rs17249754 and A allele carriers of rs2681472 had significantly higher susceptibility to hypertension and higher BP levels than their counterparts.

The mechanism by which *ATP2B1* affects blood pressure levels and the risk of hypertension is unclear, but an animal study in *ATP2B1* knockout mice suggests that *ATP2B1* may regulate blood pressure levels by altering calcium transport and vasoconstriction in vascular smooth muscle cells.^[41] Additional experimental evidence has shown that the levels of *ATP2B1* mRNA in smooth muscle cells of spontaneously hypertensive rats are higher than in normotensive rats.^[42] Experiments in bladder smooth muscle cells have shown that *ATP2B1* plays an important role in the elimination of calcium ions following carbachol stimulation or KCl depolarization.^[43] These findings suggest that the mechanism by which *ATP2B1* is involved in blood pressure regulation and influences the risk of hypertension is probably related to the level of the gene product. In addition, the associations between *ATP2B1* rs17249754 and rs2681472 with the risk of hypertension may be related to sodium retention in the body. *ATP2B1* gene polymorphism rs2681472 has been previously reported to be associated with salt sensitivity in Koreans.^[44] A recent study found that Koreans carrying the G allele of the *ATP2B1* rs17249754 polymorphism with a high sodium/potassium ratio and low calcium intake have a significantly increased risk of hypertension.^[45] There have been many studies on the associations of *ATP2B1* rs17249754 and rs2681472 with susceptibility to hypertension. The association of the *ATP2B1* rs17249754 polymorphism with hypertension was

Table 2
Subgroup analysis of the association of *ATP2B1* gene polymorphisms with hypertension.

Subgroup types	rs17249754						rs2681472										
	HTN			DBP			HTN			SBP			DBP				
	n	OR(95%CI)	P	I ² , %	n	β(95%CI)	P	I ² , %	n	OR(95%CI)	P	I ² , %	n	β(95%CI)	P	I ² , %	
Total	6	1.19 (1.10,1.28)	<.001	67.2	6	1.01 (0.86,1.16)	<.001	42.4	6	1.15 (1.12,1.17)	<.001	0.00	7	0.92 (0.77,1.07)	<.001	0.00	
Ethnicities																	
East Asian	6	1.19 (1.10,1.28)	<.001	67.2	6	1.01 (0.86,1.16)	<.001	42.4	6	1.14 (1.10,1.17)	<.001	32.0	6	0.96 (0.77,1.14)	<.001	6.60	
West Asian	NA	NA	NA	NA	NA	NA	NA	NA	NA	NA	NA	NA	NA	NA	NA	NA	NA
European	NA	NA	NA	NA	NA	NA	NA	NA	NA	NA	NA	NA	NA	NA	NA	NA	NA
Others	NA	NA	NA	NA	NA	NA	NA	NA	NA	NA	NA	NA	NA	NA	NA	NA	NA
Sample size																	
<2000	2	1.51 (0.90,2.53)	.119	71.3	NA	NA	NA	NA	5	1.12 (0.97,1.29)	.122	0.00	2	0.36 (-0.79,1.52)	.540	0.00	
≥2000	4	1.16 (1.08,1.24)	<.001	63.6	6	1.01 (0.86,1.16)	<.001	42.4	6	1.15 (1.12,1.18)	<.001	1.40	5	0.93 (0.78,1.08)	<.001	15.5	
Study population																	
Children and adolescents	1	1.25 (1.08,1.44)	.002		1	0.48 (0.07,0.89)	.022		1	1.17 (0.82,1.67)	.394	0.00	NA	NA	NA	NA	
Adults	5	1.18 (1.08,1.28)	<.001	69.1	5	1.09 (0.93,1.25)	<.001	0.00	5	1.15 (1.12,1.17)	<.001	0.00	7	0.92 (0.77,1.07)	<.001	0.00	
Measurement of BP																	
Electronic sphygmomanometer	1	2.12 (1.22,3.69)	.008		NA	NA	NA		4	1.12 (0.97,1.30)	.121	0.00	2	0.36 (-0.79,1.52)	.540	0.00	
Mercury sphygmomanometer	3	1.22 (1.14,1.31)	<.001	0.00	2	0.63 (0.26,1.01)	.001	65.5	2	1.12 (1.03,1.21)	.007	56.4	2	0.49 (-0.16,1.14)	.137	44.0	
NA	2	1.11 (1.04,1.18)	.001	39.6	4	1.08 (0.92,1.25)	<.001	0.00	4	1.15 (1.13,1.18)	<.001	0.00	3	0.96 (0.80,1.11)	<.001	0.00	

HTN = hypertension, NA = not available.

first reported in Koreans,^[20] and was subsequently confirmed in the GWAS conducted by CHARGE and Global Blood Pressure Genetics Consortium (Global BPgen).^[19] In 2009, Levy et al first identified that the *ATP2B1* rs2681472 polymorphism was associated with hypertension,^[19] and subsequent studies in China^[35] and Japan^[24] in 2010 verified the association between rs2681472 and blood pressure phenotypes. The results of this meta-analysis showed that both rs17249754 and rs2681472 polymorphisms were associated with susceptibility to hypertension and were positively correlated with both SBP and DBP levels, which is consistent with the meta-analysis results of rs2681472 and hypertension analyzed by Xi et al^[46] in the East Asian population.

To detect whether there are differences in the associations between *ATP2B1* gene polymorphisms and blood pressure phenotypes in populations of different ages, races, or sample sizes, we performed subgroup analyses and found that associations between rs2681472 polymorphism risk allele A and risk of hypertension was slightly weaker in Asians than in EURs. Takeuchi et al also reported that the risk of hypertension in the Japanese population with the rs2681472 polymorphism A allele (OR=1.10) is lower than that in EURs (OR=1.16).^[24] Because studies on the association between rs17249754 polymorphism and hypertension were limited to East Asians, the relationship between *ATP2B1* rs17249754 and hypertension cannot be compared by ethnicity, but within East Asian populations, the relationship between rs17249754 and risk of hypertension is stronger than that between rs2681472. A replication study in China also found that the association between the risk of hypertension and rs17249754 (OR=1.21) was higher than that with rs2681472 (OR=1.16).^[25] Subgroup analysis showed that the association between the G allele in rs17249754 polymorphism and risk of hypertension was stronger in children than in adults. However, because there was only 1 study that included children and adolescents with rs17249754, a direct comparison between children and adults should be cautiously interpreted, and the findings need to be validated by further research. For studies with a sample size of less than 2000, we did not find any significant associations. In other words, in some studies, rs17249754 and rs2681472 were not associated with the risk of hypertension or blood pressure levels, which is likely due to the limited statistical power of the small sample size.

There was significant heterogeneity among the studies included in this study regarding the rs17249754 polymorphism in relation to the risk of hypertension and DBP. The heterogeneity may be due to differences in the blood pressure measurement method and the different populations of studies. For the rs2681472 polymorphism, there is a weaker heterogeneity among the studies on rs2681472 polymorphism, which may be because the studies were mostly from Asian populations (including Japanese and Chinese, except for the study by Daniel Levy^[19]), and probably there was better consistency in studies of the same ethnicity.

Using a sensitivity analysis, we found that the results of this meta-analysis were stable and reliable. Begg and Egger tests showed that there was a significant publication bias in the included studies on rs17249754 polymorphism and the risk of hypertension, which may be because positive results are easier to publish than negative or insignificant results. Therefore, there is still publication bias when analyzing the influence of the rs17249754 polymorphism on the risk of hypertension. However, the meta-analysis of rs17249754 and blood pressure

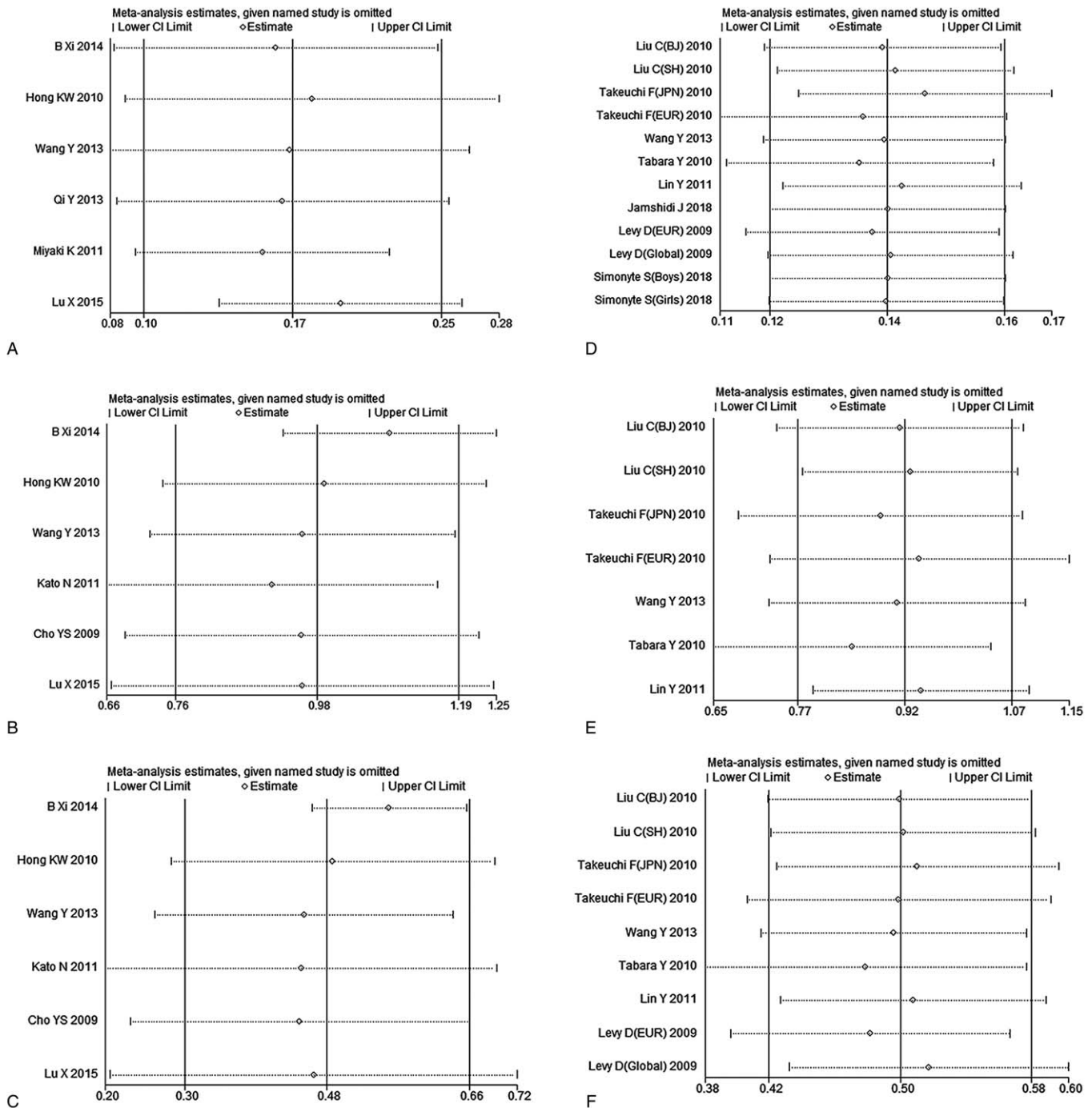


Figure 4. Sensitivity analysis of the association between *ATP2B1* gene polymorphism and hypertension. A–C: the sensitivity analysis of the correlation between rs17249754 and hypertension, SBP and DBP, respectively; D–F: the sensitivity analysis of the correlation between rs2681472 and hypertension, SBP and DBP, respectively.

was corrected by trim and fill analysis, which is the most appropriate method to handle data with publication bias, and yields the pooled effect adjusted for the funnel plot asymmetry;^[34] however, the pooled estimates of rs17249754's influence on the risk of hypertension should also be interpreted with caution.

There are some limitations within this study. First, the current study populations related to rs17249754 polymorphism, hyper-

tension and blood pressure levels are mostly Asian adults, and there are few relevant studies on EURs, Americans, and Africans, as well as studies regarding children. Therefore, it is not possible to compare the relationship between the rs17249754 polymorphism and the risk of hypertension among different ethnic groups. Second, the languages of the included studies were limited to English or Chinese, and there may be some literature in other languages not included in this study. Third, since most of

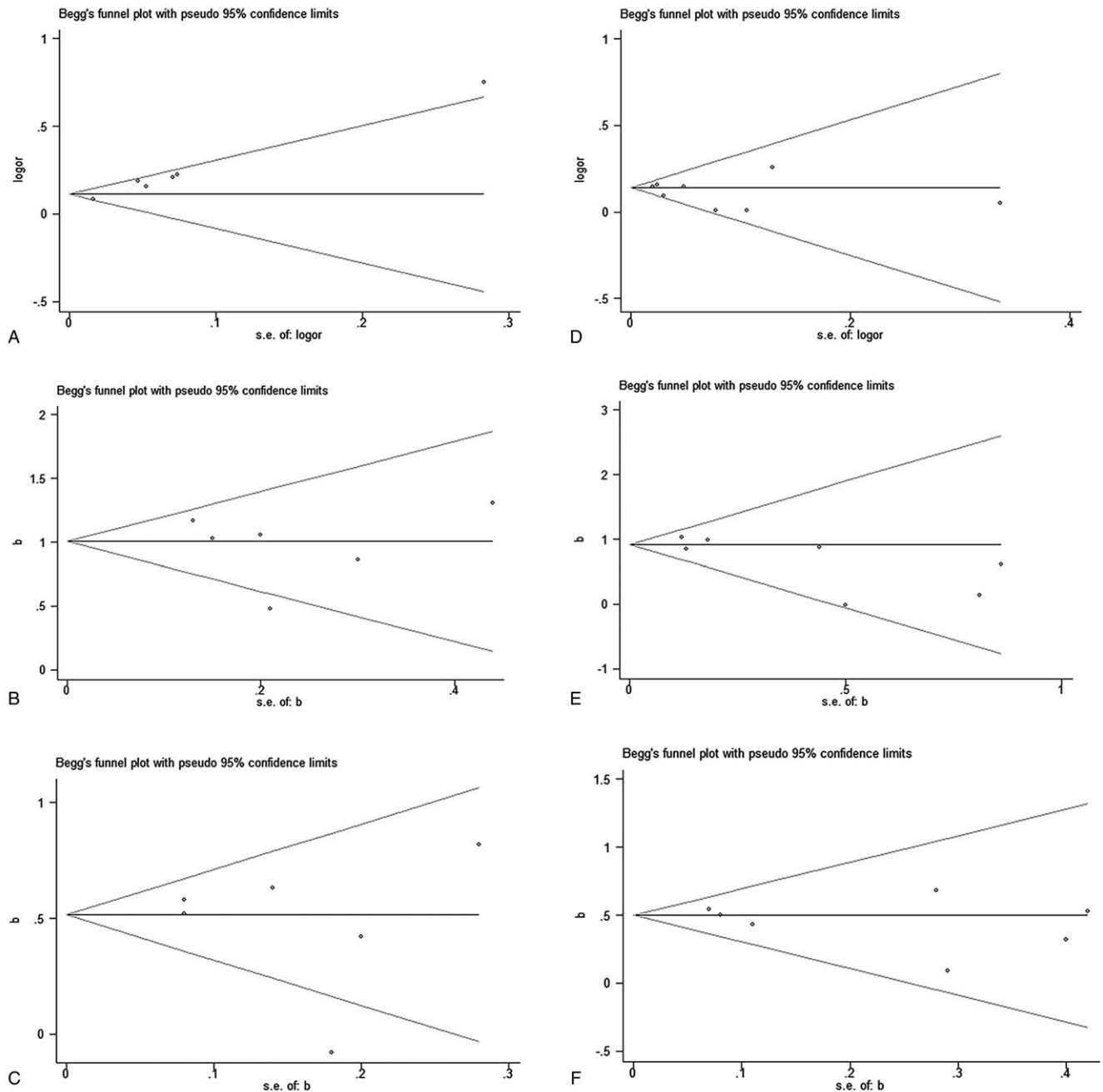


Figure 5. Funnel plots of publication bias for *ATP2B1* gene polymorphism and hypertension-related studies. A–C: funnel plots of bias published in studies on rs17249754 and its correlation with hypertension, SBP and DBP. D–F: funnel plots of bias published in studies on rs2681472 and its correlation with hypertension, SBP and DBP.

the current studies mainly reported the results under the additive genetic model, few studies have reported dominant genetic models, recessive genetic models, heterozygous models, homozygous models, or other genetic models. It is not possible to perform a meta-analysis of these genetic models. When only the additive model was considered, the results of this study may not be applicable. Fourth, in this study, because only the rs17249754 and rs2681472 polymorphisms of *ATP2B1* were subjected to meta-analysis, the interaction between each polymorphism, and

between genetic polymorphisms and the environment cannot be controlled.

5. Conclusion

In summary, our meta-analysis of the *ATP2B1* rs17249754 polymorphism (G/A) and rs2681472 polymorphism (A/G) implies that they are associated with the risk of hypertension, SBP, and DBP, and could be genetic biomarkers for hypertension.

However, the relationship between other polymorphisms of the *ATP2B1* gene and susceptibility to hypertension in a globally representative sample remains to be further investigated. Furthermore, genetic risk factors are difficult to modify, but lifestyle factors are relatively easy to modify. In the future, gene-lifestyle or gene-environment interactions with representative samples are needed to improve recommendations of the precise interventions for hypertension.

Author contributions

Acquisition of data: Ming Xie, Yuan Zeng, Shuqian Yuan.

Data curation: Ming Xie.

Design: Yide Yang, Ming Xie.

Literature search: Ming Xie, Yuan Zeng.

Manuscript: Ming Xie.

Revision of manuscript: Yide Yang, Chanjuan Zheng, Yanhui Dong, Quanyuan He.

Statistical analyses: Ming Xie, Yuan Zeng.

Validation: Shuqian Yuan, Yuan Zeng.

Writing – original draft: Ming Xie.

Writing – review & editing: Yide Yang, Chanjuan Zheng, Yanhui Dong, Quanyuan He.

References

- Williams B, Mancia G, Spiering W, et al. 2018 ESC/ESH Guidelines for the management of arterial hypertension. The task force for the management of arterial hypertension of the European Society of Cardiology (ESC) and the European Society of Hypertension (ESH). *Giornale Italiano Di Cardiologia* 2018;19:3s–73s.
- GBD 2019 Risk Factors Collaborators. Global burden of 87 risk factors in 204 countries and territories, 1990–2019: a systematic analysis for the Global Burden of Disease Study 2019. *Lancet* 2020;396:1223–49.
- Li AL, Peng Q, Shao YQ, et al. The interaction on hypertension between family history and diabetes and other risk factors. *Scientific Reports* 2021;11:4716.
- Cameron NA, Molsberry R, Pierce JB, et al. Pre-pregnancy hypertension among women in rural and urban areas of the United States. *J Am Coll Cardiol* 2020;76:2611–9.
- Valenzuela PL, Carrera-Bastos P, Gálvez BG, et al. Lifestyle interventions for the prevention and treatment of hypertension. *Nat Rev Cardiol* 2020;18:251–75.
- Muñoz M, Pong-Wong R, Canela-Xandri O, et al. Evaluating the contribution of genetics and familial shared environment to common disease using the UK Biobank. *Nat Genet* 2016;48:980–3.
- Vaura F, Kauko A, Suvila K, et al. Polygenic risk scores predict hypertension onset and cardiovascular risk. *Hypertension* 2021;77:1119–27.
- Bigazzi R, Zagato L, Lanzani C, et al. Hypertension in high school students: genetic and environmental factors: the HYGEG study. *Hypertension* 2020;75:71–8.
- Kim W, Go TH, Kang DO, et al. Age and sex dependent association of uric acid and incident hypertension. *Nutr Metab Cardiovasc Dis* 2021;31:1200–8.
- Mollerup PM, Lausten-Thomsen U, Fonvig CE, et al. Reductions in blood pressure during a community-based overweight and obesity treatment in children and adolescents with prehypertension and hypertension. *J Hum Hypertens* 2017;31:640–6.
- Schneider RH, Salerno J, Brook RD. 2020 International Society of Hypertension global hypertension practice guidelines-lifestyle modification. *J Hypertens* 2020;38:2340–1.
- Shen Y, Chang C, Zhang J, et al. Prevalence and risk factors associated with hypertension and prehypertension in a working population at high altitude in China: a cross-sectional study. *Environ Health Prev* 2017;22:19.
- Snieper H, Harshfield GA, Treiber FA. Heritability of blood pressure and hemodynamics in African- and European-American youth. *Hypertension* 2003;41:1196–201.
- Hirawa N, Fujiwara A, Umemura S. *ATP2B1* and blood pressure: from associations to pathophysiology. *Curr Opin Nephrol Hypertens* 2013;22:177–84.
- Ehret GB, Munroe PB, Rice KM, et al. Genetic variants in novel pathways influence blood pressure and cardiovascular disease risk. *Nature* 2011;478:103–9.
- Xi B, Shen Y, Zhao X, et al. Association of common variants in/near six genes (*ATP2B1*, *CSK*, *MTHFR*, *CYP17A1*, *STK39* and *FGF5*) with blood pressure/hypertension risk in Chinese children. *J Hum Hypertens* 2014;28:32–6.
- Sun XM, Yang M, Jiang CX. Association of *ATP2B1* gene polymorphism with incidence of eclampsia. *Eur Rev Med Pharmacol Sci* 2019;23:10609–16.
- Long Y, Xia JY, Chen SW, et al. *ATP2B1* gene silencing increases insulin sensitivity through facilitating Akt activation via the Ca²⁺/calmodulin signaling pathway and Ca²⁺-associated eNOS activation in endothelial cells. *Int J Biol Sci* 2017;13:1203–12.
- Levy D, Ehret GB, Rice K, et al. Genome-wide association study of blood pressure and hypertension. *Nat Genet* 2009;41:677–87.
- Cho YS, Go MJ, Kim YJ, et al. A large-scale genome-wide association study of Asian populations uncovers genetic factors influencing eight quantitative traits. *Nat Genet* 2009;41:527–34.
- Tabara Y, Kohara K, Kita Y, et al. Common variants in the *ATP2B1* gene are associated with susceptibility to hypertension: the Japanese millennium genome project. *Hypertension* 2010;56:973–80.
- Lule SA, Mentzer AJ, Namara B, et al. A genome-wide association and replication study of blood pressure in Ugandan early adolescents. *Mol Genet Genomic Med* 2019;7:e00950.
- Hong KW, Jin HS, Lim JE, et al. Recapitulation of two genomewide association studies on blood pressure and essential hypertension in the Korean population. *J Hum Genet* 2010;55:336–41.
- Takeuchi F, Isono M, Katsuya T, et al. Blood pressure and hypertension are associated with 7 loci in the Japanese population. *Circulation* 2010;121:2302–9.
- Wang Y, Zhang Y, Li Y, et al. Common variants in the *ATP2B1* gene are associated with hypertension and arterial stiffness in Chinese population. *Mol Biol Rep* 2013;40:1867–73.
- Jamshidi J, Asnaashari A, Alipoor R, et al. *ATP2B1* rs2681472 and *STK39* rs35929607 polymorphisms and risk of hypertension in Iranian population. *Med J Islamic Republic Iran* 2018;32:14.
- Lin Y, Lai X, Chen B, et al. Genetic variations in *CYP17A1*, *CACNB2* and *PLEKHA7* are associated with blood pressure and/or hypertension in She ethnic minority of China. *Atherosclerosis* 2011;219:709–14.
- Valencia DM, Naranjo CA, Parra MV, et al. Association and interaction of *AGT*, *AGTR1*, *ACE*, *ADRB2*, *DRD1*, *ADD1*, *ADD2*, *ATP2B1*, *TBXA2R* and *PTGS2* genes on the risk of hypertension in Antioquian population. *Biomedica* 2013;33:598–614.
- Simonyte S, Kuciene R, Dulskiene V, et al. Association between *ATP2B1* and *CACNB2* polymorphisms and high blood pressure in a population of Lithuanian children and adolescents: a cross-sectional study. *BMJ Open* 2018;8:e019902.
- Liberati A, Altman DG, Tetzlaff J, et al. The PRISMA statement for reporting systematic reviews and meta-analyses of studies that evaluate healthcare interventions: explanation and elaboration. *BMJ* 2009;339:b2700.
- Stang A. Critical evaluation of the Newcastle–Ottawa scale for the assessment of the quality of nonrandomized studies in meta-analyses. *Eur J Epidemiol* 2010;25:603–5.
- Stang A, Jonas S, Poole C. Case study in major quotation errors: a critical commentary on the Newcastle–Ottawa scale. *Eur J Epidemiol* 2018;33:1025–31.
- DerSimonian R, Laird N. Meta-analysis in clinical trials revisited. *Contemp Clin Trials* 2015;45:139–45.
- Duval S, Tweedie R. Trim and fill: a simple funnel-plot-based method of testing and adjusting for publication bias in meta-analysis. *Biometrics* 2000;56:455–63.
- Liu C, Li H, Qi Q, et al. Common variants in or near *FGF5*, *CYP17A1* and *MTHFR* genes are associated with blood pressure and hypertension in Chinese Hans. *J Hypertens* 2011;29:70–5.
- Hong KW, Go MJ, Jin HS, et al. Genetic variations in *ATP2B1*, *CSK*, *ARSG* and *CSMD1* loci are related to blood pressure and/or hypertension in two Korean cohorts. *J Hum Hypertens* 2010;24:367–72.
- Qi Y, Zhao H, Wang Y, et al. Replication of the top 10 most significant polymorphisms from a large blood pressure genome-wide association

- study of northeastern Han Chinese East Asians. *Hypertens Res* 2014;37:134–8.
- [38] Kato N, Takeuchi F, Tabara Y, et al. Meta-analysis of genome-wide association studies identifies common variants associated with blood pressure variation in east Asians. *Nat Genet* 2011;43:531–8.
- [39] Miyaki K, Htun NC, Song Y, et al. The combined impact of 12 common variants on hypertension in Japanese men, considering GWAS results. *J Hum Hypertens* 2012;26:430–6.
- [40] Lu X, Wang L, Lin X, et al. Genome-wide association study in Chinese identifies novel loci for blood pressure and hypertension. *Hum Mol Genet* 2015;24:865–74.
- [41] Kobayashi Y, Hirawa N, Tabara Y, et al. Mice lacking hypertension candidate gene *ATP2B1* in vascular smooth muscle cells show significant blood pressure elevation. *Hypertension* 2012;59:854–60.
- [42] Okuyama Y, Hirawa N, Fujita M, et al. The effects of anti-hypertensive drugs and the mechanism of hypertension in vascular smooth muscle cell-specific *ATP2B1* knockout mice. *Hypertens Res* 2018;41:80–7.
- [43] Wang Y, Wilson C, Cartwright EJ, et al. Plasma membrane Ca [2+]-ATPase 1 is required for maintaining atrial Ca [2+] homeostasis and electrophysiological stability in the mouse. *J Physiol* 2017;595:7383–98.
- [44] Rhee MY, Yang SJ, Oh SW, et al. Novel genetic variations associated with salt sensitivity in the Korean population. *Hypertens Res* 2011;34:606–11.
- [45] Daily JW, Kim BC, Liu M, et al. People with the major alleles of *ATP2B1* rs17249754 increases the risk of hypertension in high ratio of sodium and potassium, and low calcium intakes. *J Hum Hypertens* 2017;31:787–94.
- [46] Xi B, Tang W, Wang Q. Polymorphism near the *ATP2B1* gene is associated with hypertension risk in East Asians: a meta-analysis involving 15 909 cases and 18 529 controls. *Blood Pressure* 2012;21:134–8.