

REVIEW

The value of echocardiography and Doppler in the prediction of fetal demise after laser coagulation for TTTS: A systematic review and meta-analysis

Manon Gijtenbeek  | Sanne J. Eschbach | Johanna M. Middeldorp | Frans J.C.M. Klumper | Femke Slaghekke | Dick Oepkes | Monique C. Haak

Department of Obstetrics, Division of Fetal Medicine, Leiden University Medical Center, Leiden, The Netherlands

Correspondence

Manon Gijtenbeek, Department of Obstetrics, B03-089, Leiden University Medical Center, PO Box 9600, NL-2300 RC Leiden, The Netherlands.
Email: m.gijtenbeek@lumc.nl

Abstract

This study aimed to investigate the value of echocardiography and Doppler before fetoscopic laser coagulation for twin-twin transfusion syndrome (TTTS) in the prediction of intrauterine fetal demise (IUFD). We performed a systematic review and meta-analysis to compare preoperative parameters between fetuses with and without demise after laser surgery. Eighteen studies were included. Recipient twins have an increased risk of demise in case of preoperative absent/reversed flow (A/REDF) in the umbilical artery (odds ratio [OR] 2.76, 95% confidence interval [CI], 1.78-4.28), absent or reversed a-wave in the ductus venosus (OR 2.32, 95% CI, 1.70-3.16), or a middle cerebral artery peak systolic velocity > 1.5 multiples of the median (MoM) (OR 7.59, 95% CI, 2.56-22.46). In donors, only A/REDF in the umbilical artery (OR 3.40, 95% CI, 2.68-4.32) and absent or reversed a-wave in the ductus venosus (OR 1.66, 95% CI, 1.12-2.47) were associated with IUFD. No association was found between donor-IUFD and preoperative myocardial performance index (MPI). Two studies found an association between abnormal MPI and recipient demise. With this study, we have identified a set of preoperative Doppler parameters predictive of fetal demise after laser surgery. More research is needed to assess the utility of preoperative echocardiographic parameters such as the MPI in predicting IUFD.

1 | INTRODUCTION

Twin-twin transfusion syndrome (TTTS) complicates approximately 10% to 15% of monochorionic twin pregnancies and results from unbalanced intertwin transfusion through placental vascular anastomoses, which impacts cardiovascular loading conditions.^{1,2} If left untreated, the overall perinatal mortality can be as high as 90% to 100%.^{3,4} Fetoscopic laser coagulation of placental anastomoses significantly improves the dual twin survival rate to 64% to 70% and the

survival rate of at least one survivor to 85% to 92%.^{5,6} Survival after surgery is determined by a combination of post-laser intrauterine fetal demise (IUFD) and nonviable delivery. Compromised cardiac function is thought to contribute significantly to the mortality rates after TTTS.⁷ Cardiac (functional) abnormalities, most commonly observed in recipients⁸⁻¹⁰ are, however, not taken into account in the disease severity classification by Quintero.¹¹ The diagnosis of TTTS is made by ultrasound and encompasses the presence of concurrent polyhydramnios in the recipient and oligohydramnios in the donor

This is an open access article under the terms of the Creative Commons Attribution-NonCommercial-NoDerivs License, which permits use and distribution in any medium, provided the original work is properly cited, the use is non-commercial and no modifications or adaptations are made.

© 2019 The Authors. Prenatal Diagnosis Published by John Wiley & Sons Ltd

twin.¹² Since fetuses with cardiac compromise are more likely to die in utero, assessment of fetal cardiac function prior to laser surgery might help in staging disease severity.

Several studies have focused on fetal circulation and cardiac involvement in TTTS and the prognostic value of these measurements. The objective of this systematic review and meta-analysis was to determine the capability to predict IUFD after fetoscopic laser coagulation with echocardiography and Doppler before surgery.

2 | METHODS

2.1 | Search strategy

This systematic review was performed using the PRISMA methodology.¹³ Relevant articles were identified using electronic databases (Pubmed, Embase, Web of Science, and Cochrane). Publications from January 1990 to July 2018, written in English and containing the search terms related to TTTS, fetoscopic laser coagulation, prediction of fetal demise, and ultrasonography were included. The complete search string is available in Data S1. The final search was performed on 1 October 2018. Two reviewers (MG and SE) screened titles and abstracts independently for relevance. If a title or abstract seemed relevant, full text was retrieved and assessed for inclusion. Selected articles were cross-referenced. Disagreement was resolved by consensus between the two reviewers. Studies were excluded from the analysis if no ultrasound had been performed prior to laser surgery or IUFD was not an endpoint of the study. IUFD was defined as fetal demise at any time after laser surgery and before onset of labor.

2.2 | Quality assessment

Study quality and risk of bias was assessed by the two reviewers using the Hayden bias rating tool,¹⁴ as suggested by the Cochrane Collaboration. With this tool, the risk of bias was assessed in six domains (study participation, study attrition, prognostic factor measurement, outcome measurement, study confounding, and statistical analysis and reporting). Each of the six potential bias domains was rated as having high, moderate, or low risk of bias. Low methodological quality was not an exclusion criterion.

2.3 | Data extraction

One reviewer (MG) extracted relevant information from the selected articles. The following data were extracted from the selected articles and tabulated: first author, year of publication, study design, country of origin, number of patients, type of fetoscopic laser surgery (selective laser photocoagulation of communicating vessels [SLPCV] or the Solomon technique⁵), operationalization of primary outcome and outcome measurement and the incidence of IUFD in cases and controls (2 × 2 tables). If possible, deaths attributable to pregnancy loss before 24 weeks gestation or termination of pregnancy were excluded from the analyses.

What's already known about this topic?

- Doppler parameters are associated with fetal demise after laser surgery.
- Echocardiographic parameters are currently not used in risk stratification.

What does this study add?

- A more extensive set of preoperative Doppler parameters is defined to predict post-laser fetal demise.
- The utility of preoperative echocardiographic parameters such as the MPI in predicting fetal demise remains unclear.

2.4 | Statistical analysis

Statistical analysis was performed using Review Manager 5.3 (Copenhagen: The Nordic Cochrane Center, The Cochrane Collaboration, 2014). Odds ratios (ORs) and their 95% confidence intervals (CIs) were used as effect sizes for meta-analysis of dichotomous data. Heterogeneity between studies was examined with the inconsistency square (I^2) statistics, with between-study heterogeneity¹⁵ at $I^2 \geq 50\%$ and $p \geq .05$. In case of heterogeneity, a random effects model was used.¹⁶ Otherwise, or in case of limited studies to reliably estimate between study variability, a fixed effect model was used. We performed meta-analyses and constructed forest plots to examine the effect of abnormal Doppler flow velocity waveforms (FWWs) on IUFD with separate analyses for recipients and donors. Absent and reversed end diastolic flow (A/REDF) in the umbilical artery (UA) were combined in one group. Likewise, absent or reversed a-wave in the ductus venosus (DV) were combined in one group. Parameters measured in the same twin were used for the analyses (ie, UA Doppler in the recipient twin in relation to recipient IUFD).

3 | RESULTS

The search resulted in 473 articles, of which 18 were included in this study (Figure 1). The study characteristics are summarized in Table 1. Quality assessment is summarized in Table 2.

3.1 | Overall IUFD

Five studies report on fetal demise in the first 24 hours after surgery. An IUFD rate of 12% for donors and 8% for recipients was reported.¹⁷⁻²¹ If the period is extended to the first week after laser surgery the mortality rates increase to 17% and 15%, respectively.^{19,20,22} In studies including all fetal deaths before onset of labor, 23% of donor twins and 17% of recipient twins died in utero.^{19,21,23-33} In the early years of fetoscopic laser coagulation (1998-2008), these

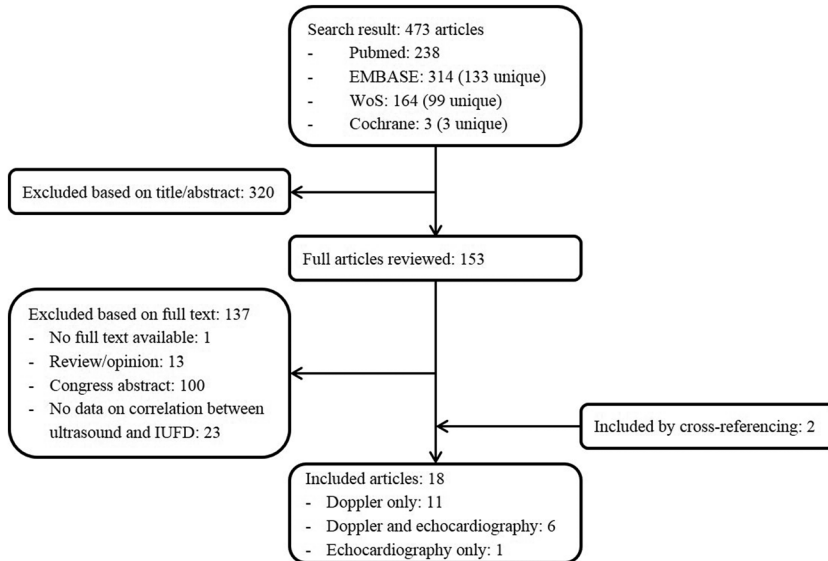


FIGURE 1 Flow chart demonstrating results of systematic review

rates were 29% and 21%. These rates improved to 19% and 13%, respectively, in the following decade (2008-2018).

3.2 | Doppler ultrasonography

Three studies were excluded from the meta-analysis^{19,33,34} because abnormal Doppler FVWs were not analyzed in relation to IUFD^{19,33} or only time-interval variables of the DV FVW were analyzed.³⁴ Since the number of included studies was too small for reliable assessment of between-study variance, a fixed effect model was used throughout.

We estimated the prevalence of abnormal Doppler FVWs in both donors and recipients prior to laser surgery. Of all fetuses, both alive and demised, 25.3% of donors and 6.2% of recipients had A/REDF in the UA prior to laser surgery. Abnormal DV FVW was found in 9.7% of donors and 28.3% of recipients. In 6.9% of donors and 35.6% of recipients pulsations in the umbilical vein were present. An elevated middle cerebral artery peak systolic velocity (MCA-PSV) prior to surgery was reported in 7.9% of donor twins and 2.4% in recipient twins.

Variables associated with fetal demise in recipient twins were: A/REDF in the UA, absent or reversed a-wave in the DV and MCA-PSV > 1.5 multiples of the median (MoM; Figure 2). Pulsatile flow in the umbilical vein was seen in over one-third of recipients, but this did not increase the risk of recipient IUFD (OR 1.50, 95% CI, 0.98-2.29). In donors, only A/REDF in the UA and absent or reversed a-wave in the DV were associated with IUFD (Figure 3). An elevated MCA-PSV in the donor almost doubled the risk of demise, but this finding did not reach significance (OR 1.91, 95% CI, 0.97-3.76). Three studies reported the odds of donor demise for AEDF and REDF in the UA separately.²⁸⁻³⁰ All three studies concluded that REDF in the UA was the strongest predictor of donor demise. Many studies included in this review were underpowered to detect a difference in IUFD rate of donors and recipients with abnormal DV FVW. No study except for

the study by Ishii et al²⁶ found a significant association between pre-operative abnormal DV FVW and donor demise. By pooling the data in this meta-analysis, we were able to find an association between abnormal DV FVW and an increased risk of IUFD of both donors and recipients.

In the included studies, additional variables were also investigated. Kontopoulos et al²⁷ showed that the proportion of time in the cardiac cycle spent in AEDF (%AEDF) was significantly higher in patients with IUFD of the donor as compared with surviving donors (36.5% vs 29.6%, $p = .01$). In a recent study by Delabaere et al²⁰ with 111 patients, donors with early fetal demise (less than 7 days after laser surgery) had a lower MCA-pulsatility index (PI) (1.43 vs 1.65, $p = .02$), a higher UA-PI (2.03 vs 1.59, $p = .05$), and a lower cerebroplacental ratio (0.81 vs 1.11, $p = .01$) as compared with donors who survived the first week after surgery. Two other studies were not able to confirm these findings.^{21,29}

3.3 | Results of individual studies on echocardiography in relation to IUFD

In seven studies, echocardiographic findings were analyzed in relation to IUFD.^{19-21,28,29,32,33} We could only perform a meta-analysis on atrioventricular regurgitation. The presence of this finding was not associated with a higher risk of either donor (OR 1.34, 95% CI, 0.39-4.62) or recipient demise (OR 1.20, 95% CI, 0.79-1.83).^{20,21,28}

The substantial methodical heterogeneity prevented the construction of other forest plots, we therefore present a summary of outcomes for other echocardiographic parameters. Five studies assessed the preoperative myocardial performance index (MPI) as a separate parameter,^{19,20,29,32,33} of which two report an increased risk of recipient demise.^{20,33} In a study of 105 recipients,³³ the risk of recipient demise was four times higher if the MPI z score was above a cutoff z score of 1.645, which corresponds to the 95th percentile ($p < .01$). After adjustment for gestational age and placental localization, there

TABLE 1 Article characteristics

Journal Name (year)	Country	Design	Multicenter/Single Center	Patients	Type of FLS	Time of IUFD	Doppler Measurements	Echocardiography	Included in Meta-analysis	
1	Ville (1998)	UK	P	M	132	SLPCV	Before onset of labor	UA	No	UA
2	Zilulnig (1999)	Germany	P	S	121	SLPCV	Before onset of labor	UA, DV	No	UA
3	Martinez (2003)	USA	P	S	110	SLPCV	Unspecified	UA, DV, UV, MCA	Yes	UA, DV, UV
4	Cavicchioni (2006)		R	S	120	SLPCV	Before onset of labor	UA, DV	No	UA, DV
5	Ishii (2007)	Japan	P	M	55	SLPCV	Before onset of labor	UA, DV, UV	No	UA, DV, UV
6	Kontopoulos (2007)	USA	P	S	401	SLPCV	Unspecified (donor)	UA, %UA	No	UA
7	Kontopoulos (2009)	USA	P	S	189	SLPCV	<24 h after FLS	MCA	No	MCA-PSV
8	Skupski (2010)	USA	R	M	466	SLPCV	Before onset of labor	UA, DV, UV	Yes	UA, DV, UV
9	Trieu (2012)	France	R	S	86	N/A	<7 d after FLS	MCA	No	MCA-PSV
10	Eixarch (2013)	Spain	P	S	215	SLPCV	<7 d after FLS	UA, DV, MCA	Yes	UA, MCA-PSV, DV
11	Gapp-Born (2014)	France	P	S	105	Both	Unspecified (recipient)	-	Yes	-
12	Tachibana (2015)	Germany	R	S	107	SLPCV	<2 d after FLS	DV (time intervals)	No	-
13	Snowise (2015)	USA	P	S	166	Solomon	Before onset of labor (donor)	UA, DV, MCA	No	UA, DV
14	Patel (2015)	USA	R	S	369	SLPCV	<24 h after FLS (recipient)	UA	No	UA
15	Eschbach (2016)	Netherlands	R	S	288	Both	SFD before onset of labor	UA, DV, UV	No	UA, DV, VU
16	Finneran (2016)	USA	R	S	53	SLPCV	<7 d after FLS	-	Yes	-
17	Leduc (2017)	Canada	R	S	105	Both	Unspecified	UA	Yes	UA
18	Delabaere (2018)	Canada	R	S	111	Both	<7 d after FLS	UA, DV, MCA	Yes	UA, DV, MCA-PSV

Abbreviations: FLS, fetoscopic laser surgery; IUFD, intra-uterine fetal demise; M, multicenter; P, prospective; R, retrospective; S, single center; SFD, single fetal demise; SLPCV, selective laser photocoagulation of communicating vessels.

was no increased risk (OR 3.09, 95% CI, 0.94-9.30, $p = .06$). In the most recent study by Delabaere et al,²⁰ demised recipients had a higher mean MPI of the right ventricle (RV-MPI) as compared with survivors after adjustment for gestational age at laser surgery (unadjusted $p = .07$, adjusted $p = .02$). The three remaining studies did not find an association between preoperative MPI and postoperative recipient demise.^{19,29,32} The results are therefore conflicting. An association between preoperative MPI and donor-IUFD was absent in all studies.

In three studies, the Children's Hospital of Philadelphia (CHOP) score³⁵ (a sum of 12 cardiovascular parameters, including the MPI) was analyzed in relation to IUFD.^{20,28,33} A CHOP score above 5 is generally considered as abnormal. Interestingly, only a CHOP score

≥ 3 was associated with recipient demise (40% with a score ≥ 3 vs 13% with a score < 3 , $p < .01$)³³ and a score > 5 was not.²⁰ In the study of 466 TTTS cases, "global cardiac dysfunction" was included in the analysis, a factor defined as an abnormal MPI, ventricular dyskinesia, abnormal ejection fraction, and abnormal CHOP score (or other measure of cardiac dysfunction; exact cutoff values for separate parameters were not stated). The presence of "global cardiac dysfunction" prior to surgery did not increase the risk of either donor or recipient demise.²⁸

In a small study by Leduc et al³² of 55 treated pregnancies, the aortic isthmus flow velocity patterns were assessed. The isthmic systolic index,³⁶ which reflects the relative performances of the right and left

TABLE 2 Risk of bias in six domains based on the Hayden bias rating tool

Variable	Study Participation	Study Attrition	Prognostic Factor Measurement	Outcome Measurement	Study Confounding	Statistical Analysis and Reporting
1	Ville (1998)	Moderate	Low	Low	Moderate	Low
2	Zilulnig (1999)	Moderate	Low	Low	Moderate	Low
3	Martinez (2003)	Low	Low	Low	Moderate	High
4	Cavicchioni (2006)	Moderate	Low	Moderate	Low	Low
5	Ishii (2007)	High	Low	Low	Low	Moderate
6	Kontopoulos (2007)	Moderate	Low	Low	Moderate	High
7	Kontopoulos (2009)	Moderate	Low	Low	Low	Low
8	Skupski (2010)	Low	Low	Moderate	Low	Low
9	Trieu (2012)	Low	Low	Low	Moderate	Low
10	Eixarch (2013)	Low	Low	Low	Low	Low
11	Gapp-Born (2014)	Low	Low	Low	Low	Low
12	Tachibana (2015)	Low	Low	Low	Low	High
13	Snowise (2015)	Low	Low	Low	Low	Low
14	Patel (2015)	Moderate	Low	Low	Low	High
15	Eschbach (2016)	Low	Low	Low	Low	Low
16	Finneran (2016)	Moderate	Low	Moderate	Low	Low
17	Leduc (2017)	Moderate	Low	Moderate	Low	High
18	Delabaere (2018)	Low	Low	Low	Low	Moderate

ventricle, measured in recipients before laser was associated with recipient IUFD ($p = .04$).

4 | DISCUSSION

In this systematic review and meta-analysis, we found an association between preoperative Doppler FVWs and IUFD after fetoscopic laser coagulation. Fetal echocardiographic parameters such as the MPI appear not to be associated with fetal demise after laser coagulation. Results from studies investigating echocardiographic parameters do almost reach significance, however, possibly indicating lack of power in these studies. The conflicting results regarding the use of echocardiography in the prediction of demise prevented us from building a prediction model including both Doppler and echocardiographic parameters.

We have shown an IUFD rate of 19% for donors and 13% for recipients in the last decade. Improved survival after laser surgery may reflect a learning-curve effect of the operators,^{6,37} who gain more experience with this procedure globally. Furthermore, evolution of the technique³⁸ and developments and improvements in ultrasonographic monitoring may play a role. The investigation of these factors on fetal survival rates fell outside of the scope of this article.

We found that A/REDF in the UA, absent or reversed a-wave in the DV and MCA-PSV > 1.5 MoM increases the risk of recipient IUFD. Abnormal UA FVW, present in only 6% of recipients, may result from placental compression by increased intra-amniotic pressure due to massive polyhydramnios or, alternatively from poor cardiac function. A suggested theory is that poor myocardial contractility as a result

of recipient hypervolemia and cardiac overload, result in an insufficient generated blood pressure to propel the blood forward in the UA throughout diastole.²⁰ The theory that poor cardiac function causes A/REDF flow in the UA in recipient twins is further supported by the finding that recipient twins with abnormal UA FVW always have abnormal venous FVW of the umbilical vein, DV, or both.¹⁸ More than one-third of recipients had a pulsatile umbilical vein preoperative, which could also indicate cardiac overload. This parameter was however not statistically significant associated with recipient demise. The mechanism underlying the association between increased MCA-PSV and IUFD in recipients is not entirely clear. Increased cardiac output resulting from the hypervolemic status of these fetuses, which is responsible for cardiomegaly and hypertrophy in some TTTS cases, could also elevate the blood velocity in the cerebral arteries. These changes have also been shown in fetuses with congenital heart disease³⁹ or intrauterine growth restriction.⁴⁰ Another suggested explanation is decreased fetal oxygenation due to placental interstitial edema, which increases MCA blood velocity through autoregulation in the absence of low hemoglobin.^{29,41}

In donors, only A/REDF in the UA and absent or reversed a-wave in the DV were found to be associated with donor-IUFD. In these twins, the mechanism leading to hemodynamic changes appears to differ from the pathophysiology in recipient twins. Abnormal UA FVW occurs in a quarter of donors prior to laser surgery. If present, the odds of demise are 3.4 times higher as compared with fetuses who have a normal UA FVW. It reflects both placental insufficiency (maldevelopment and unequal sharing) and fetal hypotension secondary to the hemodynamic imbalance in TTTS. Three studies showed

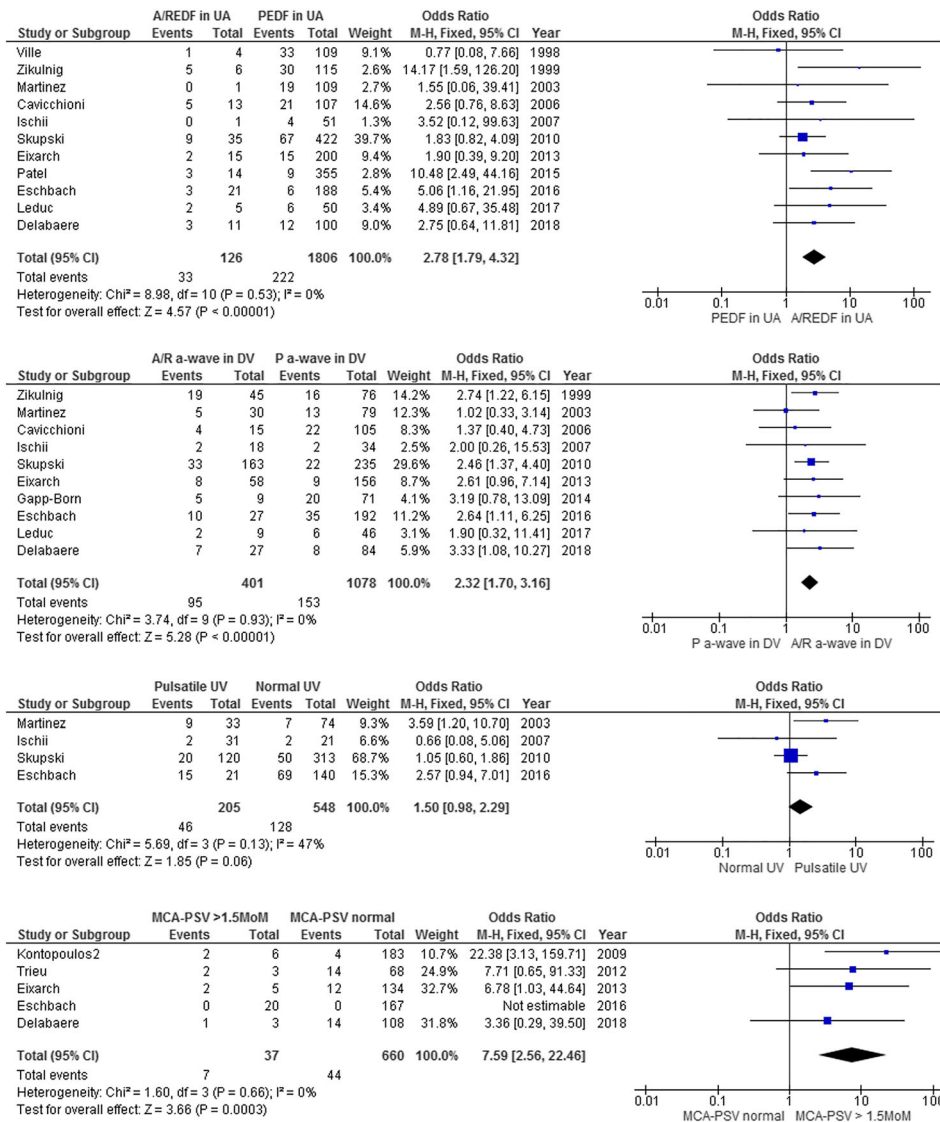


FIGURE 2 Doppler flows in the recipient twin. PEDF or A/REDF in UA, positive or absent/reversed end diastolic flow in the umbilical artery; P or A/E a-wave in DV, positive or absent/reversed a-wave in the ductus venosus; UV, umbilical vein; MCA-PSV, middle cerebral artery-peak systolic velocity [Colour figure can be viewed at wileyonlinelibrary.com]

that REDF in the UA is a stronger predictor of donor IUFD than AEDF.²⁸⁻³⁰ It is suggested that reversed UA flow reflects placental insufficiency in a greater degree and that it is not amenable to improvement following restoration of volume status.²⁹ Abnormal venous FVW in donor twins may be explained by either cardiac decompensation due to severe placental insufficiency or hypovolemia as a result of the TTTS. The relative hypervolemia after occlusion of vascular anastomoses may increase the afterload and cause acute transient impaired cardiac function, which attributes to a higher chance of donor demise after surgery. Elevated MCA-PSV prior to surgery is reported in 8% of donor twins. In monochorionic twins, unbalanced net intertwin blood transfusion may lead not only to TTTS but also to twin anemia polycythemia sequence (TAPS). In TAPS, there is a chronic and slow transfusion of blood from the donor to the

recipient twin through extremely small anastomoses.⁴² This process leads to an anemic donor and polycythemic recipient. Two to eight percent of TTTS cases may have preoperative signs of TAPS,⁴³ which may explain the increased MCA-PSV in donors prior to laser surgery. Although there was a tendency for donor twins with an elevated MCA-PSV to die more frequently in utero after surgery, this finding did not reach statistical significance.

The question whether echocardiographic parameters should be included in the TTTS staging system remains unanswered. Most studies investigating the association between assessment of cardiac function and IUFD include neonatal demise instead of fetal demise as their endpoint.⁴⁴⁻⁴⁹ A large amount of data reflecting cardiac function had therefore been excluded from this systematic review. Furthermore, the limited amount of available reports on the value

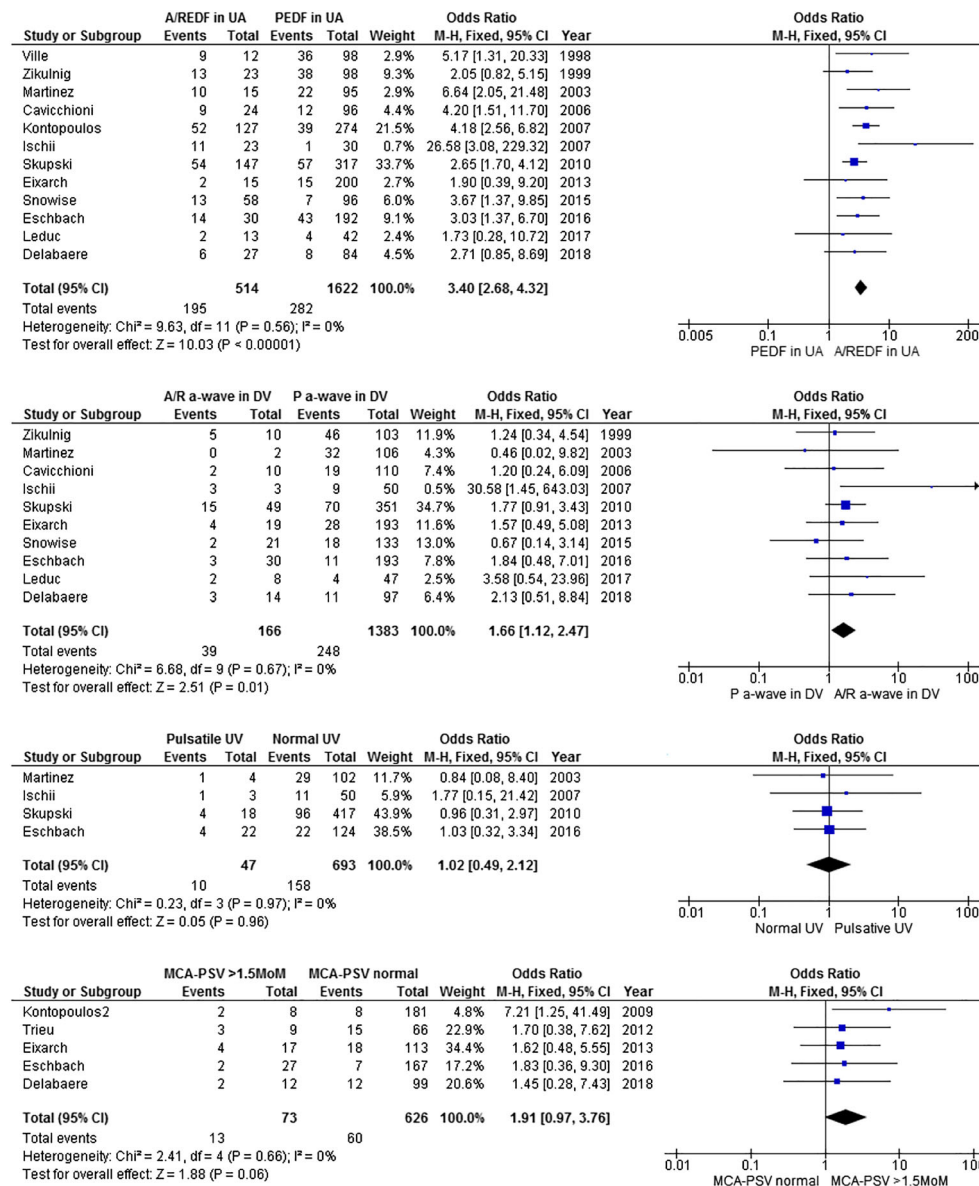


FIGURE 3 Doppler flows in the donor twin. PEDF or A/REDF in UA, positive or absent/reversed end diastolic flow in the umbilical artery; P or A/E a-wave in DV, positive or absent/reversed a-wave in the ductus venosus; UV, umbilical vein; MCA-PSV, middle cerebral artery-peak systolic velocity [Colour figure can be viewed at wileyonlinelibrary.com]

of a detailed cardiovascular assessment in the prediction of fetal survival provide discordant results. Three out of five studies did not find any genuine correlation with IUFD.^{19,29,32} The lack of correlation between severity of cardiac disease and intrauterine demise is not explained so far. The low reproducibility and repeatability indices of the MPI and a high degree of expertise needed to perform MPI or CHOP score measurements may be important factors. Very precise recordings and manual placement of calipers are needed for MPI calculations. For the left ventricle, the Doppler cursor is placed between the mitral valve and aortic valve, and both mitral inflow and aortic outflow can be visualized on the same trace. Measurement of the RV-MPI is further complicated because the right ventricular inflow and outflow cannot be visualized in one plane and thus not in the same trace. Published normal ranges for

different gestational ages demonstrate a wide variation,⁵⁰⁻⁵⁴ probably because a standardized method has not been established. While automation of these measurements will remove the human factor on measurement error, experience is still required to be able to acquire the correct Doppler waveform successfully.^{55,56} The lack of correlation may also be explained by the effectiveness of laser surgery for improving recipient cardiac function. Other variables associated with laser surgery such as premature rupture of membranes, unequal placental share, and preterm delivery become the predominant determinants of fetal mortality after correction of the hemodynamic imbalance.

To our knowledge, this is the first review and meta-analysis of preoperative echocardiography and Doppler in the prediction of IUFD after fetoscopic laser surgery. To maximize our sample size, we

included all studies that investigated fetal demise before birth, not only early-IUFD (<7 days). Other causes of demise such as placental insufficiency or IUGR could therefore have influenced our results, even though the majority of IUFD after laser occurs in the first week after laser surgery.^{7,21,26} There are also other limitations to this study. Most studies are single center reports. Half of the reports are retrospective studies. In all but one study³⁰ selective coagulation was used for all or for a proportion of cases. It is known that incomplete laser coagulation is a risk factor for recurrent TTTS or post-laser TAPS and therewith for possible subsequent fetal demise.⁵⁷ Finally, we did not include fetal growth discordance, selective fetal growth restriction (sFGR), or TAPS prior to laser surgery in this study. Future large-scale prospective studies could allow for multivariate analysis into the interference of sFGR and TAPS on fetal echocardiography and Doppler parameters for IUFD. Incorporating signs of sFGR or TAPS, and factors such as Quintero stage, hydrops, and gestational age at TTTS diagnosis, into a prediction model together with the before-mentioned Doppler parameters could be useful in daily clinical care in cases where the risk of fetal demise turns out to be high, to spend additional counseling time on cord occlusion as a back-up plan if laser surgery seems technically challenging. A prediction model could also be useful in future clinical trials investigating innovations in treatment of TTTS.

In conclusion, we have identified a set of preoperative Doppler parameters predictive of fetal demise after fetoscopic laser coagulation. Recipient twins have an increased risk of demise in case of preoperative abnormal FWV of the UA, DV, and MCA. In donor twins, only abnormal FWV of the UA and DV are associated with IUFD after surgery. The utility of preoperative parameters that reflect cardiac function such as the MPI in predicting IUFD remains unclear.

CONFLICTS OF INTEREST

None declared

DATA AVAILABILITY

Research data are not shared.

ORCID

Manon Gijtenbeek  <https://orcid.org/0000-0001-5345-5701>

REFERENCES

- Lopriore E, Vandenbussche FP, Tiersma ES, de Beaufort AJ, de Leeuw JP. Twin-to-twin transfusion syndrome: new perspectives. *J Pediatr*. 1995;127(5):675-680.
- Huber A, Hecher K. How can we diagnose and manage twin-twin transfusion syndrome? *Best Pract Res Clin Obstet Gynaecol*. 2004;18(4):543-556.
- El Kateb A, Ville Y. Update on twin-to-twin transfusion syndrome. *Best Pract Res Clin Obstet Gynaecol*. 2008;22(1):63-75.
- Fisk NM, Duncombe GJ, Sullivan MH. The basic and clinical science of twin-twin transfusion syndrome. *Placenta*. 2009;30(5):379-390.
- Slaghekke F, Lopriore E, Lewi L, et al. Fetoscopic laser coagulation of the vascular equator versus selective coagulation for twin-to-twin transfusion syndrome: an open-label randomised controlled trial. *Lancet*. 2014;383(9935):2144-2151.
- Diehl W, Diemert A, Grasso D, Sehner S, Wegscheider K, Hecher K. Fetoscopic laser coagulation in 1020 pregnancies with twin-twin transfusion syndrome demonstrates improvement in double-twin survival rate. *Ultrasound Obstet Gynecol*. 2017;50(6):728-735.
- Shah AD, Border WL, Crombleholme TM, Michelfelder EC. Initial fetal cardiovascular profile score predicts recipient twin outcome in twin-twin transfusion syndrome. *J Am Soc Echocardiogr*. 2008;21(10):1105-1108.
- Eschbach SJ, Boons LS, van Zwet E, et al. Right ventricular outflow tract obstruction in complicated monochorionic twin pregnancy. *Ultrasound Obstet Gynecol*. 2016;49(6):737-743.
- Rychik J, Zeng S, Bebbington M, et al. Speckle tracking-derived myocardial tissue deformation imaging in twin-twin transfusion syndrome: differences in strain and strain rate between donor and recipient twins. *Fetal Diagn Ther*. 2012;32(1-2):131-137.
- Zosmer N, Bajoria R, Weiner E, Rigby M, Vaughan J, Fisk NM. Clinical and echographic features of in utero cardiac dysfunction in the recipient twin in twin-twin transfusion syndrome. *Br Heart J*. 1994;72(1):74-79.
- Quintero RA, Morales WJ, Allen MH, Bornick PW, Johnson PK, Kruger M. Staging of twin-twin transfusion syndrome. *J Perinatol*. 1999;19(8):550-555.
- Johnson A. Diagnosis and management of twin-twin transfusion syndrome. *Clin Obstet Gynecol*. 2015;58(3):611-631.
- Moher D, Liberati A, Tetzlaff J, Altman DG. Preferred reporting items for systematic reviews and meta-analyses: the PRISMA statement. *J Clin Epidemiol*. 2009;62(10):1006-1012.
- Hayden JA, van der Windt DA, Cartwright JL, Côté P, Bombardier C. Assessing bias in studies of prognostic factors. *Ann Intern Med*. 2013;158(4):280-286.
- Higgins JP, Thompson SG, Deeks JJ, Altman DG. Measuring inconsistency in meta-analyses. *BMJ*. 2003;327(7414):557-560.
- DerSimonian R, Laird N. Meta-analysis in clinical trials. *Control Clin Trials*. 1986;7(3):177-188.
- Kontopoulos EV, Quintero RA. Assessment of the peak systolic velocity of the middle cerebral artery in twin-twin transfusion syndrome. Part I: preoperative assessment. *Am J Obstet Gynecol*. 2009;200:61.e61-61.e65.
- Patel S, Quintero RA, Kontopoulos EV, Korst LM, Llanes A, Chmait RH. Abnormal umbilical artery Doppler findings in the recipient twin before laser surgery for twin-twin transfusion syndrome. *J Ultrasound Med*. 2015;34(5):843-846.
- Finneran MM, Pickens R, Templin M, Stephenson CD. Impact of recipient twin preoperative myocardial performance index in twin-twin transfusion syndrome treated with laser. *J Matern Fetal Neonatal Med*. 2016;30(7):767-771.
- Delabaere A, Leduc F, Reboul Q, et al. Factors associated to early intrauterine fetal demise after laser for TTTS by preoperative fetal heart and Doppler ultrasound. *Prenat Diagn*. 2018;38(7):523-530.
- Martinez JM, Bermudez C, Becerra C, et al. The role of Doppler studies in predicting individual intrauterine fetal demise after laser therapy for twin-twin transfusion syndrome. *Ultrasound Obstet Gynecol*. 2003;22(3):246-251.
- Trieu NT, Weingertner AS, Guerra F, et al. Evaluation of the measurement of the middle cerebral artery peak systolic velocity before and

- after placental laser coagulation in twin-to-twin transfusion syndrome. *Prenat Diagn.* 2012;32(2):127-130.
23. Ville Y, Hecher K, Gagnon A, Sebire N, Hyett J, Nicolaides K. Endoscopic laser coagulation in the management of severe twin-to-twin transfusion syndrome. *Br J Obstet Gynaecol.* 1998;105(4):446-453.
 24. Zikunig L, Hecher K, Bregenzler T, Báz E, Hackelöer BJ. Prognostic factors in severe twin-twin transfusion syndrome treated by endoscopic laser surgery. *Ultrasound Obstet Gynecol.* 1999;14(6):380-387.
 25. Cavicchioni O, Yamamoto M, Robyr R, Takahashi Y, Ville Y. Intrauterine fetal demise following laser treatment in twin-to-twin transfusion syndrome. *BJOG.* 2006;113(5):590-594.
 26. Ishii K, Hayashi S, Nakata M, Murakoshi T, Sago H, Tanaka K. Ultrasound assessment prior to laser photocoagulation for twin-twin transfusion syndrome for predicting intrauterine fetal demise after surgery in Japanese patients. *Fetal Diagn Ther.* 2007;22(2):149-154.
 27. Kontopoulos EV, Quintero RA, Chmait RH, Bornick PW, Russell Z, Allen MH. Percent absent end-diastolic velocity in the umbilical artery waveform as a predictor of intrauterine fetal demise of the donor twin after selective laser photocoagulation of communicating vessels in twin-twin transfusion syndrome. *Ultrasound Obstet Gynecol.* 2007;30(1):35-39.
 28. Skupski DW, Luks FI, Walker M, et al. Preoperative predictors of death in twin-to-twin transfusion syndrome treated with laser ablation of placental anastomoses. *Am J Obstet Gynecol.* 2010;203:388.e381-388.e311.
 29. Eixarch E, Valsky D, Deprest J, et al. Preoperative prediction of the individualized risk of early fetal death after laser therapy in twin-to-twin transfusion syndrome. *Prenat Diagn.* 2013;33(11):1033-1038.
 30. Snowise S, Moise KJ, Johnson A, Bebbington MW, Papanna R. Donor death after selective fetoscopic laser surgery for twin-twin transfusion syndrome. *Obstet Gynecol.* 2015;126(1):74-80.
 31. Eschbach SJ, Boons LS, Wolterbeek R, et al. Prediction of single fetal demise after laser therapy for twin-twin transfusion syndrome. *Ultrasound Obstet Gynecol.* 2016;47(3):356-362.
 32. Leduc F, Delabaere A, Gendron R, et al. Aortic isthmus flow recording predicts the outcome of the recipient twin after laser coagulation in twin-twin transfusion syndrome. *Fetal Diagn Ther.* 2017;44(2):135-141.
 33. Gapp-Born E, Sananes N, Weingertner AS, et al. Predictive value of cardiovascular parameters in twin-to-twin transfusion syndrome. *Ultrasound Obstet Gynecol.* 2014;44(4):427-433.
 34. Tachibana D, Glosemeyer P, Diehl W, et al. Time-interval analysis of ductus venosus flow velocity waveforms in twin-to-twin transfusion syndrome treated with laser surgery. *Ultrasound Obstet Gynecol.* 2015;45(5):544-550.
 35. Rychik J, Tian Z, Bebbington M, et al. The twin-twin transfusion syndrome: spectrum of cardiovascular abnormality and development of a cardiovascular score to assess severity of disease. *Am J Obstet Gynecol.* 2007;197:392e1-392e8.
 36. Chabaneix J, Fouron JC, Sosa-Olavarria A, et al. Profiling left and right ventricular proportional output during fetal life with a novel systolic index in the aortic isthmus. *Ultrasound Obstet Gynecol.* 2014;44(2):176-181.
 37. Peeters SH, Van Zwet EW, Oepkes D, et al. Learning curve for fetoscopic laser surgery using cumulative sum analysis. *Acta Obstet Gynecol Scand.* 2014;93(7):705-711.
 38. Akkermans J, Peeters SH, Klumper FJ, Lopriore E, Middeldorp JM, Oepkes D. Twenty-five years of fetoscopic laser coagulation in twin-twin transfusion syndrome: a systematic review. *Fetal Diagn Ther.* 2015;38(4):241-253.
 39. Berg C, Gembruch O, Gembruch U, Geipel A. Doppler indices of the middle cerebral artery in fetuses with cardiac defects theoretically associated with impaired cerebral oxygen delivery in utero: is there a brain-sparing effect? *Ultrasound Obstet Gynecol.* 2009;34(6):666-672.
 40. Makh DS, Harman CR, Baschat AA. Is Doppler prediction of anemia effective in the growth-restricted fetus? *Ultrasound Obstet Gynecol.* 2003;22(5):489-492.
 41. Picklesimer AH, Oepkes D, Moise KJ Jr, et al. Determinants of the middle cerebral artery peak systolic velocity in the human fetus. *Am J Obstet Gynecol.* 2007;197:526e1-526e4.
 42. Tollenaar LS, Slaghekke F, Middeldorp JM, et al. Twin anemia polycythemia sequence: current views on pathogenesis, diagnostic criteria, perinatal management, and outcome. *Twin Res Hum Genet.* 2016;19(3):222-233.
 43. Van Winden KR, Quintero RA, Kontopoulos EV, et al. Pre-operative twin anemia/polycythemia in the setting of twin-twin transfusion syndrome (TTTS). *Fetal Diagn Ther.* 2015;37(4):274-280.
 44. Delabaere A, Leduc F, Reboul Q, et al. Prediction of neonatal outcome of TTTS by fetal heart and Doppler ultrasound parameters before and after laser treatment. *Prenat Diagn.* 2016;36(13):1199-1205.
 45. Gil Guevara E, Pazos A, Gonzalez O, Carretero P, Molina FS. Doppler assessment of patients with twin-to-twin transfusion syndrome and survival following fetoscopic laser surgery. *Int J Gynaecol Obstet.* 2017;137(3):241-245.
 46. Stirnemann JJ, Nasr B, Proulx F, Essaoui M, Ville Y. Evaluation of the CHOP cardiovascular score as a prognostic predictor of outcome in twin-twin transfusion syndrome after laser coagulation of placental vessels in a prospective cohort. *Ultrasound Obstet Gynecol.* 2010;36(1):52-57.
 47. Van Mieghem T, Martin AM, Weber R, et al. Fetal cardiac function in recipient twins undergoing fetoscopic laser ablation of placental anastomoses for Stage IV twin-twin transfusion syndrome. *Ultrasound Obstet Gynecol.* 2013;42(1):64-69.
 48. Maskatia SA, Ruano R, Shamshirsaz AA, et al. Estimated combined cardiac output and laser therapy for twin-twin transfusion syndrome. *Echocardiography.* 2016;33(10):1563-1570.
 49. Ortiz JU, Masoller N, Gomez O, et al. Rate and outcomes of pulmonary stenosis and functional pulmonary atresia in recipient twins with twin-twin transfusion syndrome. *Fetal Diagn Ther.* 2017;41(3):191-196.
 50. Cruz-Martinez R, Figueras F, Bannasar M, et al. Normal reference ranges from 11 to 41 weeks' gestation of fetal left modified myocardial performance index by conventional Doppler with the use of stringent criteria for delimitation of the time periods. *Fetal Diagn Ther.* 2012;32(1-2):79-86.
 51. Hernandez-Andrade E, Figueroa-Diesel H, Kottman C, et al. Gestational-age-adjusted reference values for the modified myocardial performance index for evaluation of fetal left cardiac function. *Ultrasound Obstet Gynecol.* 2007;29(3):321-325.
 52. Mahajan A, Henry A, Meriki N, et al. The (pulsed-wave) Doppler fetal myocardial performance index: technical challenges, clinical applications and future research. *Fetal Diagn Ther.* 2015;38(1):1-13.
 53. Meriki N, Izurieta A, Welsh A. Reproducibility of constituent time intervals of right and left fetal modified myocardial performance indices on pulsed Doppler echocardiography: a short report. *Ultrasound Obstet Gynecol.* 2012;39(6):654-658.

54. Meriki N, Welsh AW. Development of Australian reference ranges for the left fetal modified myocardial performance index and the influence of caliper location on time interval measurement. *Fetal Diagn Ther.* 2012;32(1-2):87-95.
55. Lee MY, Won HS, Jeon EJ, et al. Feasibility of using auto Mod-MPI system, a novel technique for automated measurement of fetal modified myocardial performance index. *Ultrasound Obstet Gynecol.* 2014; 43(6):640-645.
56. Leung V, Avnet H, Henry A, Wang J, Redmond S, Welsh AW. Automation of the fetal right myocardial performance index to optimise repeatability. *Fetal Diagn Ther.* 2018;44(1):28-35.
57. Lopriore E, Slaghekke F, Middeldorp JM, Klumper FJ, Oepkes D, Vandenbussche FP. Residual anastomoses in twin-to-twin transfusion syndrome treated with selective fetoscopic laser surgery: localization, size, and consequences. *Am J Obstet Gynecol.* 2009;201:66.e1-66.e4.

SUPPORTING INFORMATION

Additional supporting information may be found online in the Supporting Information section at the end of the article.

How to cite this article: Gijtenbeek M, Eschbach SJ, Middeldorp JM, et al. The value of echocardiography and Doppler in the prediction of fetal demise after laser coagulation for TTTS: A systematic review and meta-analysis. *Prenatal Diagnosis.* 2019;39:838-847. <https://doi.org/10.1002/pd.5511>