

RESEARCH ARTICLE

Open Access



Comparison of early complications between the use of a cannulated screw locking plate and multiple cancellous screws in the treatment of displaced intracapsular hip fractures in young adults: a randomized controlled clinical trial

Zhiqiang Wang, Yi Yin, Qingshan Li, Guanjun Sun, Xu Peng, Hua Yin and Yongjie Ye*

Abstract

Background: The incidence of early postoperative complications of displaced intracapsular hip fractures is high. The purpose of this study was to compare the early postoperative complications and assess the incidence of femoral neck shortening on using a newly designed proximal femoral cannulated screw locking plate (CSLP) versus multiple cancellous screws (MCS) in the treatment of displaced intracapsular hip fractures in young adults.

Methods: Sixty-eight young adult patients with displaced intracapsular hip fractures were randomly assigned to either the CSLP group or the MCS group and treated routinely by internal fixation with either the CSLP or the MCS. Harris Hip Score, nonunion, failure of fixation, overall complications, and femoral neck shortening were recorded and compared.

Results: Two patients (5.88%) in the CSLP group and eight (23.53%) in the MCS group had postoperative nonunion ($P < 0.05$). There was one case (2.94%) of fixation failure in the CSLP group and three cases (8.82%) in the MCS group ($P > 0.05$). Three patients (8.82%) in the CSLP group and 11 (32.35%) in the MCS group had overall complications ($P < 0.05$). Mean femoral neck shortening was 5.10 mm in the vertical plane and 5.11 mm in the horizontal plane in the CSLP group and 11.14 mm in the vertical plane and 10.51 mm in the horizontal plane in the MCS group. Severe femoral neck shortening (≥ 10 mm) did not occur in either the vertical or the horizontal plane in any patient of the CSLP group but occurred in 10 patients (28.57%) in the vertical plane and in 8 (22.86%) patients in the horizontal plane in the MCS group.

Conclusions: Compared with MCS, the use of CSLP in the treatment of displaced intracapsular hip fractures in young adults can reduce the rates of postoperative nonunion and overall complications and minimize femoral neck shortening.

Trial registration: [ChiCTR1800016032](http://www.chictr.org/ctpr1800016032). Registered 8 May 2018. Retrospectively registered.

Keywords: Intracapsular hip fracture, Shortening, Complication

* Correspondence: 38262773@qq.com

Department of Orthopaedics Surgery, Suining Central Hospital, Suining 629000, Sichuan, China



Background

Displaced intracapsular hip fractures in young adults are generally caused by high-energy trauma. Along with a severely damaged blood supply, there is a high risk of postoperative nonunion and femoral head avascular necrosis [1–3]. Various options exist for internal fixation of the hip, including a sliding hip screw/side plate device and multiple cannulated parallel lag screws [4]. However, even with the use of these treatment methods, the incidence of early postoperative complications such as nonunion and failure of fixation is high [5–7].

The use of multiple cancellous screws (MCS) can lead to dynamic compression at the fracture site during axial loading, resulting in a shortened femoral neck. A shortened femoral neck or an offset can cause abductor muscle weakness as a result of a decreased lever arm as well as overall limb shortening, which has been shown to be associated with significantly lower Physical Functioning and Role Physical SF-36 subscores [8–10]. The use of MCS has also been shown to correlate with a decreased quality of life [8], which may be not acceptable in active young adults.

A recent study [11] has shown that compared to three other kinds of internal fixation devices, cannulated screws, DHS, and dynamic condylar screw (DCS), fixed-angle proximal femoral locking plate (PFLP) has the best biomechanical properties, with the highest axial stiffness. However, there are few successful reports focusing on this method in the treatment of displaced femoral neck fractures in young adults.

Since February 2009, we have been using a newly designed fixed-angle device—a cannulated screw locking plate (CSLP, Xiamen Double Engine Medical Material Co. Ltd)—in the treatment of displaced intracapsular hip fractures in young adults (Garden type III–IV, OTA 31-B2.3 or 31-B3) (Fig. 1). We conducted a randomized controlled study in order to compare postoperative complications and femoral neck shortening on use of the CSLP versus MCS. Historical literature dealing with this question is sparse and this is to our knowledge the first attempt at comparing femoral neck shortening after use of a fixed-angle device versus the conventional fixation method.

We hypothesized that the use of the CSLP in the treatment of displaced intracapsular hip fractures in young adults could reduce the rates of early postoperative nonunion and failure of fixation. In addition, we presumed that the use of the CSLP would minimize postoperative shortening.

Methods

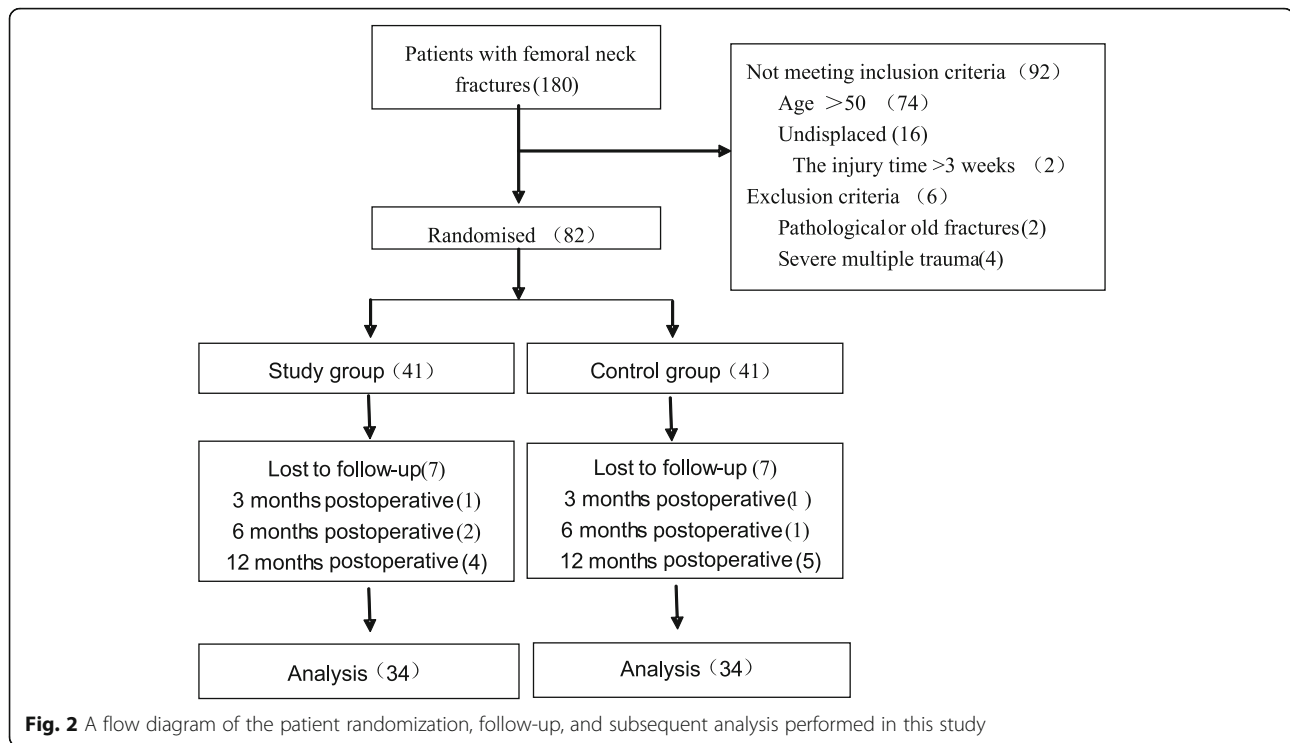
Approval for the study was obtained from our Institutional Review Board. Each patient provided written informed consent, agreeing to participate in this study. A total of 180 patients with intracapsular hip fractures who were hospitalized in our department between February



Fig. 1 The newly designed cannulated screw locking plate used in this study

2009 and December 2017 were enrolled in the study (Fig. 2). The inclusion criteria were (1) age between 18 and 50 years, (2) intracapsular hip fractures resulting from high-energy injuries (e.g., traffic accidents, falls, and sports injuries), (3) recent intracapsular hip fractures (less than < 48 h), (4) displaced intracapsular hip fractures (Garden type III–IV, OTA 31-B2.3 or 31-B3), and (5) surgical approaches of closed or open reduction and internal fixation. The exclusion criteria were (1) pathological or old fractures (injury time > 3 weeks) or undisplaced intracapsular hip fractures (Garden type I–II), (2) severe blood and immune system diseases, (3) severe multiple traumas or a previous history of ipsilateral hip or femur surgery, (4) conditions such as osteoarthritis and post-dysplastic deformities, and (5) follow-up time of less than 1 year. Patients with osteonecrosis, secondary displacement (nonunion), or reoperation were included in the study even if their follow-up time was less than 1 year. Eighty-two patients were randomly assigned to either the CSLP group or the MCS group. Randomization was performed using identical, sealed, opaque envelopes. Patients were treated routinely by internal fixation with either the CSLP or MCS. In both patient groups, surgeries were performed by two experienced orthopedic surgeons (Y.J.Y., Y.Y.). The postoperative Harris Hip Score, postoperative complications, and femoral neck shortening were compared between the two groups.

Patients in both groups were given either general or regional anesthesia while in a supine position on the



fracture table with the affected hip elevated by an angle of 10–15°. The traction bed was used for closed reduction, and anteroposterior and lateral radiographs of the femoral neck were obtained using the C-arm X-ray machine. Garden's alignment index was adopted to evaluate the effectiveness of closed reduction. Reduction was considered acceptable if the angle between the femoral medial cortex and the central axis of the compression trabeculae in medial femoral head was 160–180° on the anteroposterior radiograph and 180° on the lateral radiograph and if there was a maximum difference of 20° in Garden's alignment index on the lateral radiograph before and after reduction. Otherwise, the effectiveness of the closed reduction was not considered ideal, and internal fixation was considered essential after open reduction. A Watson-Jones approach [12] was used, and the fracture was opened by performing an inverted T-shaped incision in the capsule. A Kirschner wire was used to manipulate the head of the femur.

For the patients in the CSLP group, a 5–8-cm downward longitudinal incision was made from the greater trochanter of the femur. The iliotibial band and the vastus lateralis muscle were incised and 4–5 cm of bone surface under the greater trochanter was exposed. Next, the guide wire was drilled into the inferior portion of the femoral neck, and the position of the guide wire in the femoral neck was confirmed under fluoroscopy. The Kirschner wire was placed on a CSLP, and two other guide wires were drilled into the femoral neck. The

hollow drill was placed into the drill hole of the guide wire. Locking cannulated screws of appropriate length were selected and tightened. The stabilizing screw was finally secured at the bottom of the locking plate. During the operation, the split gaskets were initially fixed onto the locking holes, and the screws were tightened to enable compression of the fracture ends. The gaskets were removed to lock the screws before a stabilizing screw was finally placed into the distal end of the steel plate. Theoretically, the three screws should be arranged in an inverted triangle in the femoral neck and the average distance from the screw tip to the femur head apex should be 5–10 mm (Fig. 3).

For patients in the MCS group, a 4–6-cm longitudinal incision was made below the greater trochanter of the femur. The iliotibial band and the vastus lateralis muscle were incised, and the lateral surface of the femur below the greater trochanter was exposed. A 3.2-mm guide wire was placed on the skin in front of the femoral neck in order to draw it close to the inferior-medial cortex of the femoral neck. Another guide wire was drilled into the femoral head from the midpoint of the lateral femoral cortical bone (parallel to the front guide wire), so that the tip of the guide wire was located behind the femoral head, and the anteversion angle was maintained within 10°. A second guide wire was then drilled in slightly above it. A third guide wire was drilled from the base of the greater trochanter, along the tensile trabecular bone, passing through the femoral neck and

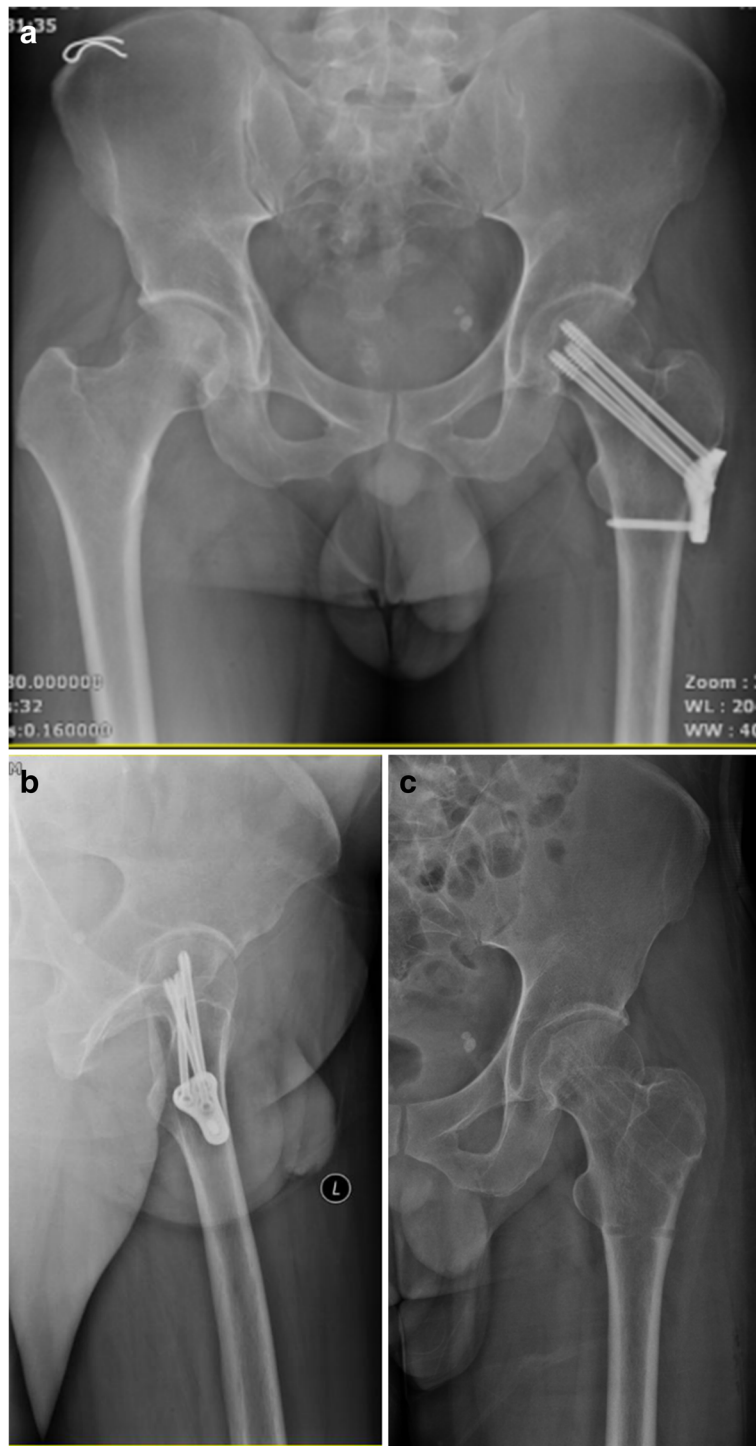


Fig. 3 Anteroposterior view of pelvis (a) and lateral radiograph of the femoral neck (b) after closed reduction and internal fixation with the cannulated screw locking plate. Anteroposterior view of the hip after internal fixation was removed (c)

penetrating into the femoral head. The anteversion angle was maintained within 5° such that the guide wire was located at the more anterior part of the femoral head. The desired length of each cannulated screw was

measured and the guide wire was pulled after drilling into the 7.3-mm length of the corresponding half-threaded cannulated screw. The surgeons chose to fix femoral neck fractures with screws in an inverted

triangle with the depth of the cannulated screws reaching an area 3 mm under the femoral head cartilage (Fig. 4).

Regular follow-ups were performed at 6 weeks, 3 months, 6 months, and 1 year after surgery. On clinical evaluation at the latest follow-up, pain and limitation of movement were recorded. The Harris Hip Score [13] was calculated to evaluate hip function. On radiological [14, 15] or CT scan [15, 16] evaluation, the degree of union, loss of fracture alignment, and position of implant were observed. Femoral neck shortening was measured on digital radiographs using Adobe Photoshop CS 6 (Adobe Systems Inc., CA, USA), as described previously [17, 18]. The fractured hip on the most recent anteroposterior radiograph was compared with the contralateral hip on

radiographs taken at the time of the injury. The uninjured side was outlined, overlapped over the fractured side, and adjusted for differences in size. Femoral neck shortening was assessed in the horizontal (abductor moment arm shortening) and vertical (femur length decrease) plane. Known diameters of screws were used to correct for differences in radiograph magnification.

Statistical analysis

Statistical analysis was performed using SPSS version 17.0 (SPSS Inc., Chicago, IL, USA). Continuous data are expressed as mean \pm standard deviation. The *t* test for two independent samples was used to analyze normally distributed data. The rank-sum test was used for data

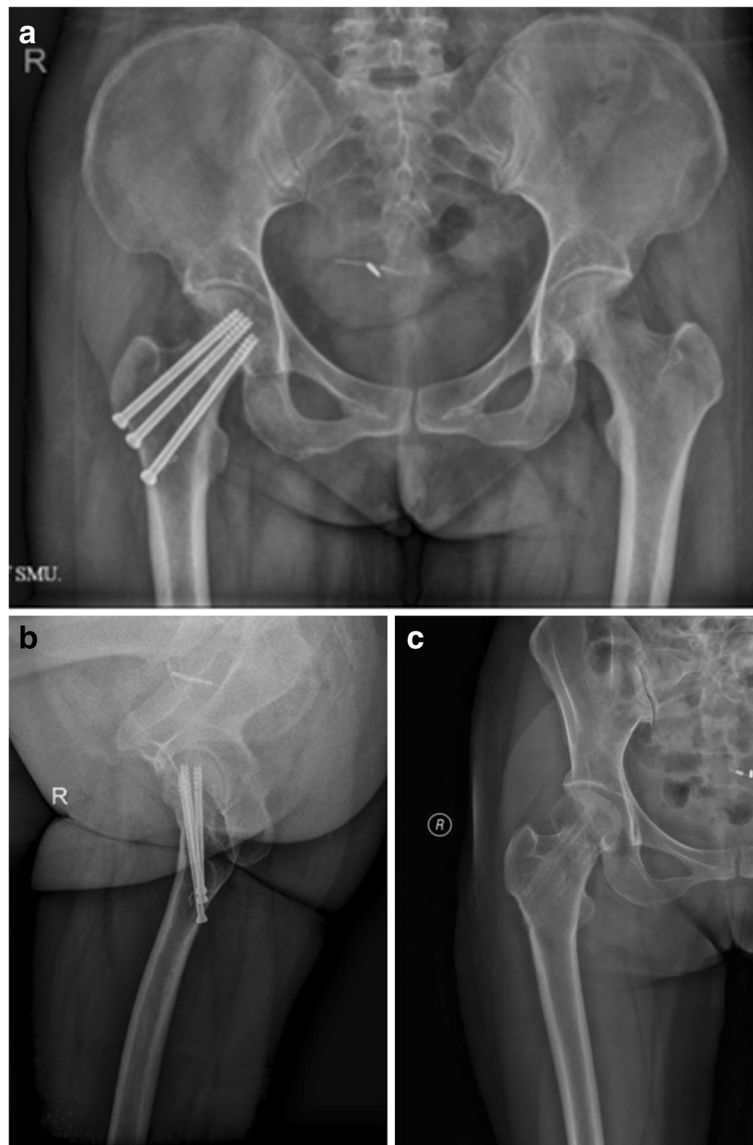


Fig. 4 Anteroposterior view of pelvic (a) and lateral radiograph of the femoral neck (b) after closed reduction and internal fixation with three cannulated screws. Anteroposterior view of the hip after internal fixation was removed (c)

with heterogeneity of variance and non-normal distribution. Categorical data were compared using the χ^2 test or the Fisher exact probability method if the theoretical frequency was less than 1. A P value of <0.05 was considered statistically significant. The overall postoperative complication rate was defined as the sum of the individual rates of nonunion and fixation failure.

Results

Table 1 shows the baseline preoperative data, including gender, age, cause of injury, fracture type, Harris Hip Scores, and time from diagnosis to surgery. Patients in the CSLP group had a mean age of 45.12 ± 5.38 years, whereas those in the MCS group had a mean age of 46.02 ± 6.23 years. The CSLP group included 55.88% of female patients and 44.12% of male patients, whereas the MCS group had 47.06% of female patients and 52.94% of male patients. The mean Harris Hip Score was 12.20 ± 2.18 in the CSLP group and 13.98 ± 2.16 in the MCS group. The mean time from diagnosis to surgery was 31.62 ± 6.79 h in the CSLP group and 32.84 ± 5.12 h in the MCS group. There were no statistically significant differences in Garden classification and OTA classification between the two groups of patients ($P > 0.05$). The causes of injuries varied between the two groups of patients. Traffic accidents were the main cause of injury (47.06%) in the CSLP group, whereas falls were the main cause of injury in the MCS group (52.94%).

Table 1 Preoperative clinical data

| | CSLP group (%) | MCS group | χ^2/t value | P value |
|-----------------------|------------------|------------------|------------------|-----------|
| Gender | | | | |
| Male | 15 (44.12) | 18 (52.94) | 0.54 | 0.51 |
| Female | 19 (55.88) | 16 (47.06) | | |
| Age (years) | 45.12 ± 5.38 | 46.02 ± 6.23 | -0.54 | 0.97 |
| Harris Hip Score | 12.20 ± 2.18 | 13.98 ± 2.16 | -0.392 | 0.427 |
| Causes of injuries | | | | |
| Sport injuries | 12 (35.29) | 10 (29.41%) | 4.76 | 0.03 |
| Traffic accidents | 16 (47.06%) | 6 (17.65%) | | |
| Falls | 6 (17.65%) | 18 (52.94%) | | |
| Garden classification | | | | |
| Type III | 23 (67.65%) | 21 (61.76%) | 0.2576 | 0.6118 |
| Type IV | 11 (32.35%) | 13 (38.23%) | 0.2576 | 0.6118 |
| OTA classification | | | | |
| OTA 31-B2.3 | 11 (32.35) | 9 (26.47) | 0.2833 | 0.5945 |
| OTA 31-B3.1 | 8 (23.53) | 10 (29.41) | 0.3022 | 0.5825 |
| OTA 31-B3.2 | 9 (26.47) | 8 (23.53) | 0.0784 | 0.7794 |
| OTA 31-B3.3 | 6 (17.65) | 7 (20.59) | 0.0951 | 0.7578 |
| Time from diagnosis | | | | |
| To surgery (hours) | 31.62 ± 6.79 | 32.84 ± 5.12 | -0.72 | 0.528 |

Postoperative results

CSLP group

The mean follow-up period was 21.7 ± 4.66 months. All but two patients underwent closed reduction and internal fixation, and the mean Garden's alignment index was $169.71 \pm 4.66^\circ$ on the anteroposterior position and $171.87 \pm 5.46^\circ$ on the lateral position. The mean Harris Hip Scores of healed patients that were revised were 59.04 ± 4.13 , 78.81 ± 3.43 , 90.47 ± 5.79 , and 92.63 ± 5.55 at 6 weeks, 3 months, 6 months, and 1 year after surgery, respectively (Fig. 5). During the follow-up period, postoperative nonunion occurred in two patients (5.88%) and one case underwent fixation failure. Three patients (8.82%) underwent total hip arthroplasty. Mean femoral neck shortening is 5.10 mm in the vertical plane and 5.11 mm in the horizontal plane. The rates of no/mild and moderate decrease were 70.58% and 29.41% in the vertical plane and 76.47% and 23.53% in the horizontal plane. Severe decrease femoral neck shortening (10 mm or greater) did not occur in any patient both in the vertical and horizontal plane in this group (Fig. 6).

MCS group

The mean follow-up period was 24.8 ± 5.78 months. Two patients underwent open reduction after failure of closed reduction. The mean Garden's alignment index was $170.59 \pm 4.69^\circ$ on the anteroposterior position and $171.93 \pm 5.62^\circ$ on the lateral position. The mean Harris Hip Scores of healed patients were 58.32 ± 5.26 , 77.63 ± 3.34 , 89.87 ± 4.24 , and 89.74 ± 5.33 at 6 weeks, 3 months, 6 months, and 1 year after surgery, respectively (Fig. 5). During the follow-up period, postoperative nonunion occurred in eight patients (23.53%) and three patients (8.82%) developed fixation failure including screw withdrawal accompanied by displacement and angulation of the fracture site and withdrawal of cannulated screws without displacement and angulation of the fracture site. Nine patients (26.47%) underwent total hip arthroplasty in the second phase. Two patients (5.71%) received conservative treatment after removal of the internal fixation and ultimately achieved bone healing. Shortening of the femoral neck is common in this group. Mean decrease is 11.14 mm in the vertical plane and 10.51 mm in the horizontal plane. The rates of no/mild and moderate femoral neck shortening were 35.29% and 35.29% in the vertical plane and 44.12% and 32.35% in the horizontal plane. Severe femoral neck shortening occurred in 10 patients (29.41%) in the vertical plane and 8 (23.52%) patients in the horizontal plane (Fig. 6).

There were statistically significant differences in the rates of postoperative nonunion ($P = 0.0399$), shortening of the femoral neck ($P < 0.001$), and overall complications ($P = 0.0164$) between the two groups of patients during the follow-up period. There were no statistically

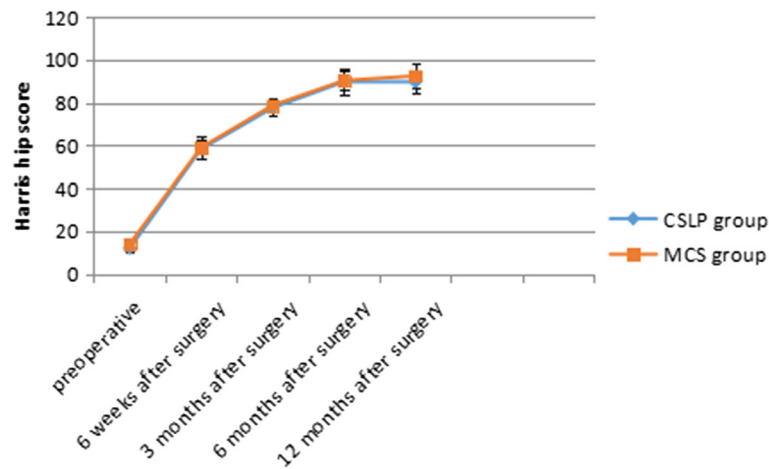


Fig. 5 This figure illustrates the Harris Hip Scores for both groups from the preoperative to the postoperative periods. Note the increasing trend in postoperative scores for both groups

significant differences in Harris Hip Score and fixation failure between the two groups of patients ($P > 0.05$) (Table 2).

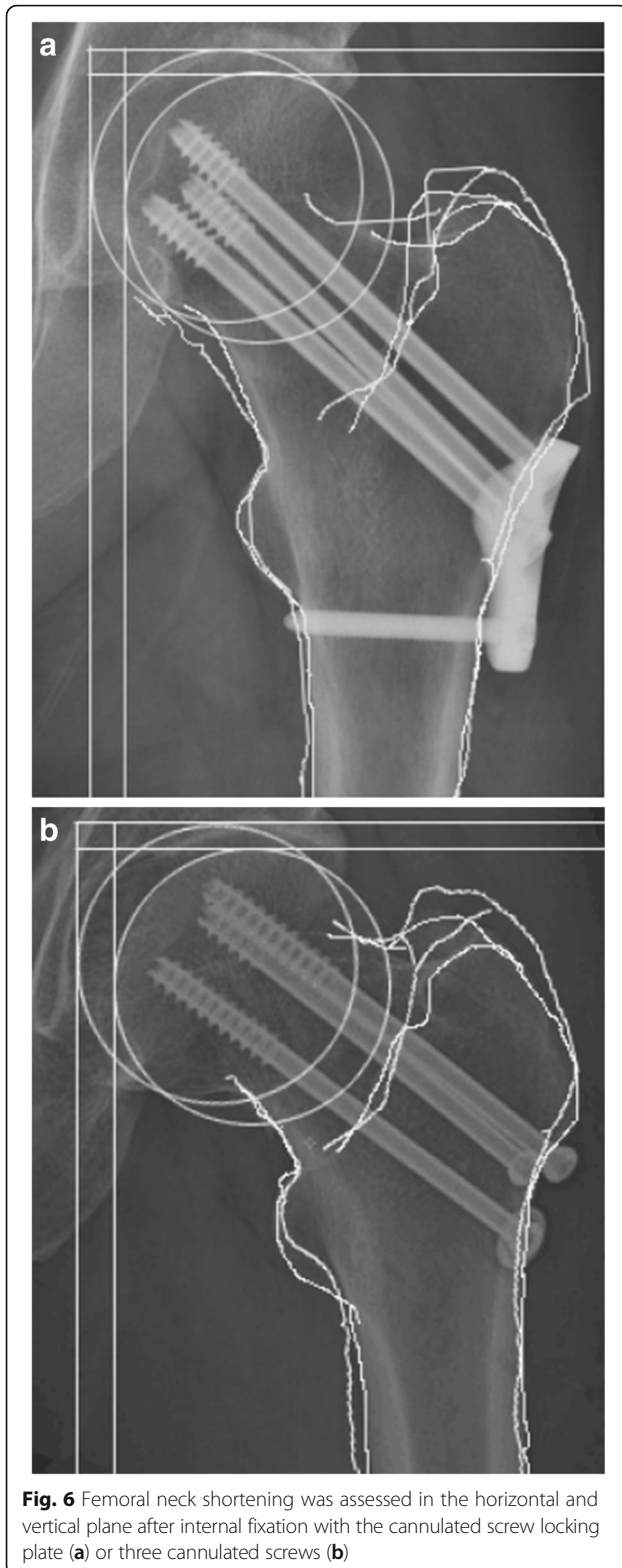
Discussion

Although various implants have been developed for internal fixation with open or closed reduction of femoral neck fractures, predicting healing of the femoral neck by stable fixation without shortening continues to be challenging.

In our study, although the rates of fixation failure are lower in the CSLP group (2.94%) than in the MCS group (8.82%), the difference was not statistically significant. It is possible that the CSLP is a device with a fixed angle, where the placement directions and the spacing intervals of screws are fixed and cannot be adjusted. If the diameter of the femoral neck is smaller, the screws can penetrate through the bone cortex, resulting in fixation failure. However, the rates of non-union were 5.88% in the CSLP group and 23.53% in the MCS group. Overall complications occurred in three patients (8.82%) treated with CSLP and in 11 patients (32.35%) treated with MCS. These differences were statistically significant. We assume that the major reason for the poorer results in the MCS group was insufficient mechanical stability. Because of the lack of support on the medial side behind the femoral neck and in cases where the outer cortex was unable to withstand a certain torque, multiple-screw fixation would not be ideal. Another limitation of the MCS technique is the inability to control rotation [19]. As a fixed-angle device, the CSLP consists of a small proximal femoral locking plate and four cannulated screws. The plate can provide effective support, the three screws are arranged

in an inverted triangle in the femoral neck to guarantee stability, the bolt-plate locking design could help avoid loosening and withdrawal of the cannulated screws, and the other screw can be used to fix the femoral shaft, effectively preventing the rotation of the screw plate after surgery and strengthening internal fixation. The design may explain why the CSLP is superior to MCS. Biomechanical experiments have showed that, compared with MCS, a fixed-angle device can increase resistance to shear forces and reduce micromotion [11], which seems to impair the healing process. However, the CSLP itself has no longitudinal pressurization effect. If pressurization is needed initially intraoperatively, the split gaskets must be fixed onto the locking holes, and the screws are tightened so that the fracture sites are compressed. The gaskets are then removed to lock the screws and achieve the effect of compression locking. In fact, it is not clear whether dynamic compression is necessary or whether the compression achieved during fixation is sufficient. One randomized controlled trial [20] reported higher failure rates for displaced femoral neck fractures when sliding hip screws were used in a dynamic compression mode compared to static locking (33% vs. 18%).

To the best of our knowledge, there are only a few published reports on the use of a proximal femoral locking plate in the treatment of intracapsular hip fractures (Table 3). To effectively compare our treatment results with previously published results on the treatment of displaced femoral neck fractures, we used similar statistical methods for analysis. Parker et al. [21] reported a nonunion rate of 7% in 46 patients who were treated with reduction and Targon Femoral Neck Hip Screw internal fixation for displaced fractures. However, that study was conducted in an elderly cohort with a



mean patient age of 75 years and had neither a control group nor randomization. Thein et al. [22] compared Targon FN and MCS in a clinical study and noted

nonunion rates of 3.2% and 46.8%, respectively. Although the conclusion is consistent with ours, that study too was not a randomized controlled study but used a historical control instead. Ismail et al. performed a cross-sectional study of six displaced fractures in patients aged 17–55 years who were treated with Cloverleaf Locking Plate Fixation. The nonunion rate was reported to be 0%. Although the results were promising, only six cases of displaced fractures were analyzed. Additionally, the procedure employed was not **minimally invasive**, because the plate is much longer than the plate we used. Lin et al. [23] reported a nonunion rate of 7% in patients aged 21–65 years treated for displaced intracapsular hip fractures with a proximal femoral locking plate with cannulated screws, identical to the device used in our study. The nonunion rate was similar to that in our study. However, the previous study had no control group. On comparing our results with previously published results, the nonunion rate in the CSLP group in our study was lower than that in the study by Parker and higher than that in the other studies. In a recent report, Berkes et al. [24] described their experience with the Posterolateral Femoral Locking Plate, reporting a 63.6% rate of catastrophic failure in displaced fractures. They concluded that this device was not appropriate for intracapsular femoral fractures. The reason for the difference in results among the studies is not fully understood. It could be related to implant design, patient selection, follow-up time, injury-operation interval, quality of reduction, position of the internal fixation, and percentage of open reductions.

There is a consensus that shortening of the femoral neck is common after screw fixation of femoral neck fractures [10]. Data for femoral neck fractures treated with multiple cannulated screws indicate a shortening rate of 27 to 31% [8]. In light of this, we assess the incidence of femoral neck shortening quantitatively and qualitatively on using CSLP versus MCS in the treatment of displaced intracapsular hip fractures in young adults. In our study, the mean decrease was 5.10 mm in the vertical plane and 5.11 mm in the horizontal plane. Severe femoral neck shortening (≥ 10 mm) did not occur in any patient in either the vertical or the horizontal plane in the CSLP group. However, in the MCS group, the mean decrease was 11.14 mm in the vertical plane and 10.51 mm in the horizontal plane. Severe femoral neck shortening occurred in 10 patients (29.41%) in the vertical plane and in 8 patients (23.53%) in the horizontal plane. This implies that the CSLP also acts as a length-stable implant; locking of the screw to the side plate could prevent additional femoral neck shortening. However, MCS cannot provide enough resistance to shortening as it is based only

Table 2 Postoperative results

| | CSLP group (n = 34) | MCS group (n = 34) | χ^2 value/t value/z value | P value |
|--|---------------------|--------------------|--------------------------------|----------|
| Follow-up period (month) | 21.7 ± 4.66 | 24.8 ± 5.78 | - 2.710 | 0.009 |
| Garden's alignment index | | | | |
| Anteroposterior (degree) | 169.71 ± 4.66 | 170.59 ± 4.69 | - 0.253 | 0.801 |
| Lateral (degree) | 171.87 ± 5.46 | 171.93 ± 5.62 | 1.262 | 0.211 |
| Harris Hip Score | | | | |
| 6 weeks after surgery | 59.04 ± 4.13 | 58.32 ± 5.26 | 0.651 | 0.651 |
| 3 months after surgery | 78.81 ± 3.43 | 77.63 ± 3.34 | 1.462 | 0.148 |
| 6 months after surgery | 90.47 ± 5.79 | 89.87 ± 4.24 | 0.591 | 0.556 |
| 1 year after surgery | 92.63 ± 5.55 | 89.74 ± 5.33 | 1.709 | 0.092 |
| Femoral neck shortening | | | | |
| In the vertical plane | | | | |
| Mean decrease (mm) | 5.10 ± 1.90 | 11.14 ± 2.78 | - 11.13 | < 0.0001 |
| No/mild (0–4.9) | 24 (70.58%) | 12 (35.29%) | - 6.11** | |
| Moderate (5–9.9) | 10 (29.41%) | 12 (35.29%) | | < 0.0001 |
| Severe (10 or greater) | 0 | 10 (29.41%) | | |
| In the horizontal plane | | | | |
| Mean decrease (mm) | 5.11 ± 1.90 | 10.51 ± 2.78 | - 10.61 | 0.000 |
| No/mild (0–4.9) | 26 (76.47%) | 15 (44.12%) | | |
| Moderate (5–9.9) | 8 (23.53%) | 11 (32.35%) | - 5.74** | < 0.0001 |
| Severe (10 or greater) | 0 | 8 (23.53%) | | |
| Nonunion (%) | 2 (5.88%) | 8 (23.53%) | 4.22 | 0.0399* |
| Failure of fixation (%) [#] | 1 (2.94%) | 3 (8.82%) | | 0.6135* |
| Overall complications (%) ^{&} | 3 (8.82%) | 11 (32.35%) | 5.757 | 0.0164* |

**Rank sum test

*Fisher's exact test

[&]Overall complications = nonunion + failure of fixation

on the friction of the bone/unthreaded portion of the screw interface [25].

We are aware of several limitations of this study. The trial was conducted at a single center and the sample size is small. Although the patients were

randomized, double blinding was not performed. We did not compare time to heal between the two groups due to the limited follow-up time points. Furthermore, the 1- to 2-year follow-up is needed to visualize the shape of the femur after healing and

Table 3 A comparative literature summary of the common postoperative complications for femoral neck fractures

| Author | Year | N of patients [☆] | Age (year) | Internal fixation | Follow-up (month) | Nonunion (%) | Fixation failure | Overall complications (%) | Control group | Study style |
|-----------|------|----------------------------|--------------|------------------------|-------------------|--------------|------------------|---------------------------|-----------------------|-----------------------|
| Lin D | 2011 | 29 | 47 (21–65) | LPCS [Ⓞ] | 43 | 2 (7) | - | 4 (14) | No | Prospective |
| Thein R | 2014 | 31 | 50.9 ± 16.0 | Targon FN [Ⓞ] | 17 | 1 (3.2) | - | 4 (12.9) | Historical control | Prospective |
| Parker MJ | 2009 | 46 | 75 (42–103) | Targon FN [Ⓞ] | ≥ 12 | 7 (15.2) | - | 9 (19.6) | No | Prospective |
| Berkes MB | 2012 | 11 | 71.7 ± 13.7 | PLFLP [Ⓞ] | 23 | - | 7 (63.6) | 8 (72.7) | Case-control | Retrospective |
| Ismail HD | 2012 | 6 | 17–55 | CLPF [Ⓞ] | ≥ 12 | 0 | - | - | No | Cross-sectional study |
| Wang ZQ | 2015 | 34 | 45.12 ± 5.38 | CSLP [Ⓞ] | 21.7 | 2 (5.88) | 1 (2.94) | 3 (8.82) | Randomized controlled | Prospective |

[☆]Only included those patients with displaced intracapsular hip fractures[Ⓞ]LPCS, proximal femoral locking plate with cannulated screws[Ⓞ]Targon FN, the Targon Femoral Neck Hip Screw[Ⓞ]PLFLP, the Posterolateral Femoral Locking Plate[Ⓞ]CLPF, Cloverleaf Locking Plate Fixation[Ⓞ]CSLP, proximal femoral cannulated screw locking plate

how the constructs held up after full weight-bear in the further study.

Conclusion

Our study demonstrated that the use of the CSLP in the treatment of displaced intracapsular hip fractures in young adults can reduce the rates of postoperative non-union, overall complications, and femoral neck shortening. Evaluation of long-term results will require larger sample sizes and a longer follow-up period.

Abbreviations

CSLP: Cannulated screw locking plate; DCS: Dynamic condylar screw; MCS: Multiple cancellous screws; PFLP: Proximal femoral locking plate

Availability of data and materials

All the data of the manuscript are presented in the paper.

Authors' contributions

YJY and ZQW carried out the entire procedure including the literature search and data extraction. QSL performed the statistical analysis, drafted the manuscript, and revised the submitted manuscript. GJS and HY conceived of the study, coordinated and participated in the entire process of drafting, and revised the manuscript. YY and XP contributed to the statistical analysis and revision of the manuscript. All authors have contributed significantly. All authors read and approved the final manuscript.

Ethics approval and consent to participate

This study was performed under the approval (No. 2016-09) from the Clinical Research Ethics Committee in Suining Central Hospital. All subjects agreed to participate in this study.

Consent for publication

Not applicable.

Competing interests

The authors declare that they have no competing interests.

Publisher's Note

Springer Nature remains neutral with regard to jurisdictional claims in published maps and institutional affiliations.

Received: 20 March 2018 Accepted: 30 July 2018

Published online: 13 August 2018

References

- Haidukewych GJ, Rothwell WS, Jacofsky DJ, Torchia ME, Berry DJ. Operative treatment of femoral neck fractures in patients between the ages of fifteen and fifty years. *J Bone Joint Surg Am.* 2004;86-A:1711–6.
- Liporace F, Gaines R, Collinge C, Haidukewych GJ. Results of internal fixation of Pauwels type-3 vertical femoral neck fractures. *J Bone Joint Surg Am.* 2008;90:1654–9.
- Davidovitch RI, Jordan CJ, Egol KA, Vrahas MS. Challenges in the treatment of femoral neck fractures in the nonelderly adult. *J Trauma.* 2010;68:236–42.
- Parker MJ, Blundell C. Choice of implant for internal fixation of femoral neck fractures. Meta-analysis of 25 randomised trials including 4,925 patients. *Acta Orthop Scand.* 1998;69:138–43.
- Swionkowski MF. Intracapsular fractures of the hip. *J Bone Joint Surg Am.* 1994;76:129–38.
- Estrada LS, Volgas DA, Stannard JP, Alonso JE. Fixation failure in femoral neck fractures. *Clin Orthop Relat Res.* 2002;(399):110–8.
- Lowe JA, Crist BD, Bhandari M, Ferguson TA. Optimal treatment of femoral neck fractures according to patient's physiologic age: an evidence-based review. *Orthop Clin North Am.* 2010;41:157–66.
- Tidermark J, Ponzer S, Svensson O, Söderqvist A, Törnkvist H. Internal fixation compared with total hip replacement for displaced femoral neck fractures in the elderly. A randomised, controlled trial. *J Bone Joint Surg Br.* 2003;85:380–8.
- Charles MN, Bourne RB, Davey JR, Greenwald AS, Morrey BF, Rorabeck CH. Soft-tissue balancing of the hip: the role of femoral offset restoration. *Instr Course Lect.* 2005;54:131–41.
- Zlowodzki M, Jonsson A, Paulke R, Kregor PJ, Bhandari M. Shortening after femoral neck fracture fixation: is there a solution? *Clin Orthop Relat Res.* 2007;461:213–8.
- Aminian A, Gao F, Fedoriw WW, Zhang LQ, Kalainov DM, Merk BR. Vertically oriented femoral neck fractures: mechanical analysis of four fixation techniques. *J Orthop Trauma.* 2007;21:544–8.
- Nakai T, Liu N, Fudo K, Mohri T, Kakiuchi M. Early complications of primary total hip arthroplasty in the supine position with a modified Watson-Jones anterolateral approach. *J Orthop.* 2014;11:166–9.
- Harris WH. Traumatic arthritis of the hip after dislocation and acetabular fractures: treatment by mold arthroplasty. An end-result study using a new method of result evaluation. *J Bone Joint Surg Am.* 1969;51:737–55.
- Milgram JW. Nonunion and pseudarthrosis of fracture healing. A histopathologic study of 95 human specimens. *Clin Orthop Relat Res.* 1991;(268):203–13.
- Assiotis A, Sachinis NP, Chalidis BE. Pulsed electromagnetic fields for the treatment of tibial delayed unions and nonunions. A prospective clinical study and review of the literature. *J Orthop Surg Res.* 2012;7:24.
- Dickson K, Katzman S, Delgado E, Contreras D. Delayed unions and nonunions of open tibial fractures. Correlation with arteriography results. *Clin Orthop Relat Res.* 1994;(302):189–93.
- Zlowodzki M, Ayieni O, Petrisor BA, Bhandari M. Femoral neck shortening after fracture fixation with multiple cancellous screws: incidence and effect on function. *J Trauma.* 2008;64:163–9.
- Zlowodzki M, Brink O, Switzer J, Wingerter S, Woodall J Jr, Petrisor BA, et al. The effect of shortening and varus collapse of the femoral neck on function after fixation of intracapsular fracture of the hip: a multi-centre cohort study. *J Bone Joint Surg Br.* 2008;90:1487–94.
- Ly TV, Swionkowski MF. Management of femoral neck fractures in young adults. *Indian J Orthop.* 2008;42:3–12.
- Frandsen PA, Andersen PE Jr, Christoffersen H, Thomsen PB. Osteosynthesis of femoral neck fracture. The sliding-screw-plate with or without compression. *Acta Orthop Scand.* 1984;55:620–3.
- Parker MJ, Stedtfeld HW. Internal fixation of intracapsular hip fractures with a dynamic locking plate: initial experience and results for 83 patients treated with a new implant. *Injury.* 2010;41:348–51.
- Thein R, Herman A, Kedem P, Chechik A, Shazar N. Osteosynthesis of unstable intracapsular femoral neck fracture by dynamic locking plate or screw fixation: early results. *J Orthop Trauma.* 2014;28:70–6.
- Lin D, Lian K, Ding Z, Zhai W, Hong J. Proximal femoral locking plate with cannulated screws for the treatment of femoral neck fractures. *Orthopedics.* 2012;35:e1–5.
- Berkes MB, Little MT, Lazaro LE, Cymerman RM, Helfet DL, Lorich DG. Catastrophic failure after open reduction internal fixation of femoral neck fractures with a novel locking plate implant. *J Orthop Trauma.* 2012;26:e170–6.
- Alves T, Neal JW, Weinhold PS, Dahners LE. Biomechanical comparison of 3 possible fixation strategies to resist femoral neck shortening after fracture. *Orthopedics.* 2010;33(4):233.

Ready to submit your research? Choose BMC and benefit from:

- fast, convenient online submission
- thorough peer review by experienced researchers in your field
- rapid publication on acceptance
- support for research data, including large and complex data types
- gold Open Access which fosters wider collaboration and increased citations
- maximum visibility for your research: over 100M website views per year

At BMC, research is always in progress.

Learn more biomedcentral.com/submissions

