

RESEARCH ARTICLE

Open Access

Evolutionary history of tall fescue morphotypes inferred from molecular phylogenetics of the *Lolium-Festuca* species complex

Melanie L Hand^{1,3}, Noel OI Cogan^{1,2}, Alan V Stewart⁴, John W Forster^{1,2,3*}

Abstract

Background: The agriculturally important pasture grass tall fescue (*Festuca arundinacea* Schreb. syn. *Lolium arundinaceum* (Schreb.) Darbysh.) is an outbreeding allohexaploid, that may be more accurately described as a species complex consisting of three major (Continental, Mediterranean and rhizomatous) morphotypes. Observation of hybrid infertility in some crossing combinations between morphotypes suggests the possibility of independent origins from different diploid progenitors. This study aims to clarify the evolutionary relationships between each tall fescue morphotype through phylogenetic analysis using two low-copy nuclear genes (encoding plastid acetyl-CoA carboxylase [*Acc1*] and *centroradialis* [*CEN*]), the nuclear ribosomal DNA internal transcribed spacer (rDNA ITS) and the chloroplast DNA (cpDNA) genome-located *matK* gene. Other taxa within the closely related *Lolium-Festuca* species complex were also included in the study, to increase understanding of evolutionary processes in a taxonomic group characterised by multiple inter-specific hybridisation events.

Results: Putative homoeologous sequences from both nuclear genes were obtained from each polyploid species and compared to counterparts from 15 diploid taxa. Phylogenetic reconstruction confirmed *F. pratensis* and *F. arundinacea* var. *glaucescens* as probable progenitors to Continental tall fescue, and these species are also likely to be ancestral to the rhizomatous morphotype. However, these two morphotypes are sufficiently distinct to be located in separate clades based on the ITS-derived data set. All four of the generated data sets suggest independent evolution of the Mediterranean and Continental morphotypes, with minimal affinity between cognate sequence haplotypes. No obvious candidate progenitor species for Mediterranean tall fescues were identified, and only two putative sub-genome-specific haplotypes were identified for this morphotype.

Conclusions: This study describes the first phylogenetic analysis of the *Festuca* genus to include representatives of each tall fescue morphotype, and to use low copy nuclear gene-derived sequences to identify putative progenitors of the polyploid species. The demonstration of distinct tall fescue lineages has implications for both taxonomy and molecular breeding strategies, and may facilitate the generation of morphotype and/or sub-genome-specific molecular markers.

Background

The *Festuca* genus is the largest within the Loliinae sub-tribe of the Poaceae family, and contains over 500 species of temperate grasses [1]. Species of *Festuca* vary in morphology, with studies of leaf anatomy and phylogeny based on sequence of the internal transcribed spacer

(ITS) region of ribosomal DNA (rDNA) consistently defining two major evolutionary lineages, of broad and fine-leaved species [1-6]. The genus also varies substantially in ploidy levels, from diploid ($2n = 2x = 14$) to dodecaploid ($2n = 12x = 84$), the vast majority of species being allopolyploid [7,8]. One of the most agriculturally important *Festuca* species is tall fescue (*Festuca arundinacea* Schreb.); a broad-leaved outbreeding allohexaploid grass that is cultivated for pasture production throughout the temperate world. Within the *Festuca* genus, tall fescue has been recognised as belonging,

* Correspondence: john.forster@dpi.vic.gov.au

¹Department of Primary Industries, Biosciences Research Division, Victorian AgriBiosciences Centre, 1 Park Drive, La Trobe University Research and Development Park, Bundoora, Victoria 3083, Australia

Full list of author information is available at the end of the article

along with other mostly polyploidy species, to the *Schedonorus* sub-genus [2]. This taxonomic classification has been the subject of some controversy, as *Schedonorus* species share a close relationship with *Lolium*, the relatively less populated genus of ryegrasses and allied species, which contains ten recognised diploid taxa [9-11]. The monophyly of *Schedonorus* and *Lolium* has led to proposals of reclassification, such that the *Schedonorus* sub-genus is aligned within *Lolium* and tall fescue is hence renamed *Lolium arundinaceum* (Schreb.) Darbysh [12]. The *Lolium* and *Festuca* genera undoubtedly represent a closely allied complex of related and partially interfertile species. In this study, however, due to comparisons of tall fescue and other broad-leaved species with taxa which remain classified as part of *Festuca*, the nomenclature and sub-generic classification of Clayton and Renvoize [2] is retained.

The *Schedonorus* sub-genus is itself a complex species group with considerable ploidy variation resulting from multiple combinatorial hybridisation events. Within this sub-genus, hexaploid tall fescue is a member of a polyploid series that consists of a tetraploid (*F. arundinacea* var. *glaucescens* Boiss. = *F. arundinacea* subsp. *fenas* (Lag.) Arcang.), octoploid (*F. arundinacea* subsp. *atlantigena* (St. Yves) Auquier) and a decaploid (*F. arundinacea* subsp. *letourneuxiana* St. Yves.). Other evolutionary important *Schedonorus* species include diploid meadow fescue (*F. pratensis* Huds.), *F. pratensis* subsp. *apennina* (De Not.) Hegi (tetraploid), *F. mairei* St. Yves (tetraploid) and the hexaploid *F. gigantea* (L.) Vill. The complex evolutionary relationships between these species have to date been studied through the generation of hybrids [13-17], cytological analysis [18], *in situ* hybridisation [19-22], molecular genetic marker variation [3,23,24] and comparison of chloroplast and rDNA ITS nucleotide sequence [1,4-6].

Further complications arise due to variation within hexaploid tall fescue itself, which may be more accurately described as a species complex. Three major forms of tall fescue have been recognised (Continental, Mediterranean and rhizomatous) that differ in terms of agronomically significant morphological and physiological attributes. These distinct forms are denoted in this study as morphotypes. The summer-active Continental type that predominates in Northern Europe has contributed the majority of temperate cultivated germplasm, and has been the subject of most published tall fescue studies. The Mediterranean type endemic to Northern Africa, parts of Italy and the Middle East displays incomplete summer dormancy and greater winter growth, but lacks winter hardiness as compared to the Continental type [25,26]. The two morphotypes also appear to harbor distinctly different symbiotic fungal endophytes of the *Epichloë* type [27,28].

The third, rhizomatous, morphotype predominates in parts of northern Portugal and Galicia in Spain [29,30] and is distinguished by the presence of both longer and more prevalent rhizomes than those seen in Continental and Mediterranean germplasm, as well as some other distinct taxonomic traits [30,31]. Rhizomatous tall fescue has hence become the target of turf breeding programs due to its superior spreading ability, firstly in New Zealand [32-35] and later in Europe and the USA [36].

The observed differences between the three types would not necessarily be of taxonomic significance, except that F_1 hybrids between morphotypes, despite being highly vigorous individuals, may display infertility. This property has been reported for crosses between Continental and Mediterranean morphotypes, which display irregular meiotic pairing resulting from extensive multivalent formation [37-43]. Similarly, hybrids between rhizomatous and Mediterranean plants are highly desynaptic, forming numerous univalents at meiosis [43], and hence sterile [34,36]. The sterility effects have in part been explained in terms of genetic control of a diploid-like chromosome pairing mechanism in hexaploid tall fescue [44-46]. This mechanism, which may be of broad occurrence in the Poaceae family, does not operate at the haploid level (and is hence termed haplo-insufficient) [44,45]. It is also possible that failure of meiotic pairing is due to structural or genomic differences between chromosomes [47]. Many allopolyploid species have arisen more than once from different progenitor ancestral species [48] and it is probable that hexaploid tall fescue follows this pattern, with separate origin events in different regions [30,49].

Attempts to determine the genomic constitution of tall fescue have to date solely focused on the Continental morphotype. Meadow fescue (*F. pratensis*) has previously been identified as the contemporary taxon most closely related to one of the diploid progenitor sub-genome (P) donors, based on chromosome structure and pairing [13,17] studies. The two remaining sub-genomes (G_1 and G_2) have been attributed to the tetraploid *F. arundinacea* var. *glaucescens*, based on genomic *in situ* hybridisation (GISH) and other molecular genetic techniques [19,20,23]. The genomic constitution of Continental tall fescue has therefore been designated $PPG_1G_1G_2G_2$.

Although multiple studies of *Festuca* genus phylogeny have been performed [1,3-6,24], none as yet have included multiple tall fescue morphotypes. Furthermore, the methods employed were limited in capacity to identify each putative progenitor of an allopolyploid species. Genes present in single copy or low copy-number within the nuclear genome have become increasingly popular for studying plant phylogenies [50] and have been used to determine the hybrid origins of polyploid species [51-54]. As compared to the sequences that have been

traditionally used for molecular evolutionary studies, nuclear genes provide sequence evolution rates elevated in comparison to chloroplast DNA (cpDNA) and rDNA [55,56], are biparentally inherited (in contrast to cpDNA) and are less frequently subjected to concerted evolution than rDNA [57]. This study aims to compare the sequence of two protein-coding genes (*Acc1* [encoding plastid acetyl-CoA carboxylase] and *CEN* [the floral developmental identity-determining gene *centroradialis*, also known as *terminal flower 1*]) obtained from all three tall fescue morphotypes, along with some other species of section *Schedonorus*, and taxa previously identified as putative diploid progenitors. The *Acc1* gene is present as a single copy in *Triticum* (wheat) species on the homoeologous group 2 chromosomes [58] and has been used to achieve high phylogenetic resolution and identify the hybrid origins of a number of polyploid species [59-61]. The *CEN* gene has been previously isolated and characterised in perennial ryegrass (*Lolium perenne* L.) and although Southern hybridisation studies revealed two gene copies in this species, only one was detected and isolated from a genomic library [62]. The *LpCEN* gene has been previously mapped to perennial ryegrass linkage group 5 [63]. Given the large extent of macrosyteny between the genomes of the Triticeae cereals and both *Lolium* and *Festuca* species, the allohexaploid tall fescue *Acc1* and *CEN* orthologues are likely to be located on homoeologous linkage groups 2 and 5, respectively [64-66]. The value of the *CEN* gene for molecular phylogenetics studies in Poaceae species has been evaluated here for the first time. This study is hence aimed at increasing knowledge of evolutionary relationships between each tall fescue morphotype, and other species of the *Schedonorus* sub-genus through the use of three classes of gene sequence: the nuclear rDNA ITS region, the two low-copy nuclear genes, and the cpDNA *maturase K* (*matK*) gene, which has been adopted as an international standard for DNA 'barcoding' [67] and provides evidence for maternal progenitor identity.

Methods

Orthology assessment

Exonic regions of the wheat *Acc1* (GenBank accession EU660902) and the perennial ryegrass *CEN* (GenBank accession AF316419) nuclear genes were used as subject queries in BLASTN analysis [68] of the *Brachypodium distachyon* genome sequence 8X release [69], to determine copy number in the model species, and hence probable abundance of predicted orthologues (defined at a threshold level of $E < 10^{-50}$) in *Festuca* species.

Sampling and DNA Extraction

Sampling of *Lolium/Festuca* taxa was designed to include the three tall fescue morphotypes along with diploid and

polyploid species that are thought to share common sub-genomes (Table 1). A sample from the related grass species crested dog's-tail (*Cynosurus cristatus* L.) was chosen as an out-group for all datasets. Seed of each tall fescue morphotype was supplied by PGG Wrightson Seeds, apart from the Continental cultivar KY31, which was obtained from the Royal Barenbrug Group. The remainder of the samples used were sourced from the Genetic Resources Unit, Institute for Biological, Environmental and Rural Studies (IBERS), Aberystwyth, Wales. Genomic DNA was extracted from freeze-dried leaf tissue from one individual per cultivar or accession, using the DNeasy Plant Mini Kit (Qiagen)

Ploidy Analysis

Ploidy levels for each sample were confirmed using flow cytometric measurements obtained using a Partec Ploidy Analyser instrument. For each cultivar or accession, the single individual from which genomic DNA was extracted was also used for DNA content measurement. Nuclei were extracted from fresh leaf tissue and stained using CyStain UV precise P (Partec) according to the manufacturer's instructions. Prepared samples were immediately analysed using ultraviolet (UV) light excitation, and duplicate readings were obtained for each sample. A total of two separately prepared samples were measured for each individual tall fescue plant. The genome size for each species was measured relative to *F. pratensis* (as a confirmed diploid standard) and then compared to previously published relative genome sizes [8,18,70,71].

PCR Amplification

PCR reactions were established in total volumes of 20 μ l, containing 1 \times Immolase PCR buffer, 1.5 mM MgCl₂, 200 μ M dNTPs, 0.25 μ M each primer (listed in Table 2), 0.4 units Immolase DNA polymerase (Bioline) and 10 ng template genomic DNA. For the *Acc1* and rDNA ITS regions, PCR programs were as previously described (references listed in Table 2). The *CEN* gene fragment was amplified using a touchdown PCR program consisting of 95°C for 15 minutes, 10 cycles of 95°C for 30 seconds, 65°C for 30 seconds decreasing 1°C per cycle, 72°C for 2 minutes, followed by 25 cycles of 95°C for 30 seconds, 55°C for 30 seconds to 72°C for 2 minutes and a final extension of 72°C for 7 minutes. To amplify the *matK* gene region, the same touchdown protocol was used with an altered initial annealing temperature of 60°C.

Cloning and Sequencing

All *Acc1* and *CEN* amplification products were sub-cloned into the pCR⁴-TOPO[®] vector using the TOPO[®] TA Cloning[®] Kit for Sequencing (Invitrogen) and were transformed into TOPO10 chemically competent *E. coli*

Table 1 List of samples included in the study and details of ploidy levels and origin

Taxon	Ploidy	Origin	Sub-genus	IBERS Accession Identifier	Number of distinct haplotypes	
					Acc1	CEN
<i>Festuca arundinacea</i> Schreb.	6x					
Jesup		Continental cultivar	<i>Schedonorus</i>	N/A	3	3
Quantum		Continental cultivar	<i>Schedonorus</i>	N/A	3	3
KY31		Continental cultivar	<i>Schedonorus</i>	N/A	3	3
Resolute		Mediterranean cultivar	<i>Schedonorus</i>	N/A	2	2
PG4012		Mediterranean breeding line	<i>Schedonorus</i>	N/A	2	2
Torpedo II		Rhizomatous cultivar	<i>Schedonorus</i>	N/A	3	3
CT2093R		Rhizomatous breeding line	<i>Schedonorus</i>	N/A	3	3
<i>Festuca pratensis</i> Huds.	2x	Tadhams Moor (Great Britain)	<i>Schedonorus</i>	BF1199	1	1
<i>Festuca pratensis</i> subsp. <i>apennina</i> (De Not.) Hegi	4x	Le Moleson (Switzerland)	<i>Schedonorus</i>	BF954	2	2
<i>Festuca arundinacea</i> var. <i>glaucescens</i> Boiss	4x	Aoiz (Spain)	<i>Schedonorus</i>	BN581	2	2
<i>Festuca mairei</i> St. Yves	4x	Marrakesh (Morocco)	<i>Schedonorus</i>	BS3065	2	2
<i>Festuca gigantea</i> (L.) Vill.	6x	Unspecified	<i>Schedonorus</i>	BS5001	2	3
<i>Festuca arundinacea</i> subsp. <i>atlantigena</i> (St. Yves) Auquier	8x	Unspecified	<i>Schedonorus</i>	BN865	3	2
<i>Festuca arundinacea</i> subsp. <i>letourneuxiana</i> St. Yves	10x	Agadir Gouj (Morocco)	<i>Schedonorus</i>	BN812	4	4
<i>Festuca drymeja</i> Mert. & Koch	2x	(Hungary)	<i>Drymanthele</i>	BS3675	1	1
<i>Festuca altissima</i> All.	2x	Koskeg (Hungary)	<i>Drymanthele</i>	BS4384	1	1
<i>Festuca lasto</i>	2x	Los Barrios (Spain)	<i>Drymanthele</i>	BS3748	1	1
<i>Festuca scariosa</i> (Lag) Asch. & Graebn.	2x	Unspecified	<i>Scariosae</i>	BS3278	1	1
<i>Festuca pallens</i> Host.	2x	Gyulakeszi (Hungary)	<i>Festuca</i>	BL2811	1	1
<i>Festuca circummediterranea</i> Patzke	2x	Colle Sanson (Italy)	<i>Festuca</i>	BL2787	1	1
<i>Festuca rupicaprina</i> (Hackel) A. Kerner	2x	Unspecified	<i>Festuca</i>	BL2767	1	1
<i>Festuca tatrae</i> (Czako) Degen	2x	Unspecified	<i>Festuca</i>	BL2758	1	1
<i>Festuca ovina</i> L.	2x	Ponterwyd (Great Britain)	<i>Festuca</i>	BL2643	1	1
<i>Festuca valesiaca</i> Schleicher ex Gaudin	2x	Pregradnaya (Russia)	<i>Festuca</i>	BL2506	1	1
<i>Lolium perenne</i> L.	2x	Cultivar 'Aurora'	-	N/A	1	1
<i>Lolium multiflorum</i> Lam.	2x	Cultivar 'Andrea'	-	N/A	1	1
<i>Lolium temulentum</i> L.	2x		-	BA13157	1	1
<i>Cynosurus cristatus</i> L.	2x	Ponterwyd (Great Britain)	-	BG527	1	1

N/A = not applicable

cells following manufacturer's instructions. For each plant accession-gene combination, 12 colonies were picked for each predicted diploid sub-genome, and the recombinant plasmid DNA was amplified using the

Table 2 Details of primer pairs used to amplify the rDNA ITS region and the *matK*, *Acc1* and *CEN* genes

DNA region	Primer name	Primer sequence 5' - 3'	Reference
<i>Acc1</i>	Acc1f1	GTTCTGGCTCCCAATATTTATC	[59]
	Acc1r1	TTCAAGAGATCAACTGTGTAATCA	[59]
<i>CEN</i>	CENf1	TAAGCAGCCCAAGCCCTTCAAAG	This paper
	CENr3	CGAGGAAGTAATGTAGAAGAGGAGC	This paper
ITS	ITS1	TCGTAACAAGGTTTCCGTAGGTG	[72]
	ITS4	TCCTCCGCTTATTGATATGC	[72]
<i>matK</i>	SS-1F	ACCCTGTTCTGACCATATTG	[94]
	trnK-2R	AAGTAGTCGGATGGAGTAG	[95]

TempliPhi DNA Sequencing Template Amplification Kit (GE Healthcare). The amplified template was diluted with the addition of 56 µl of ddH₂O and 2 µl used as template for sequencing with T7 and T3 primers. Each sequencing reaction contained 5 µl total volume and contained 0.16 µM primer, 0.125 µl BigDye[®] Terminator v3.1 (Applied Biosystems), 0.875 × BigDye[®] Sequencing Buffer (Applied Biosystems) and was subjected to cycling conditions as described in the BigDye[®] v3.1 protocol. The extension products were purified with ethanol, sodium acetate and EDTA following the BigDye[®] v3.1 protocol (Applied Biosystems) and electrophoresis was performed on the ABI3730xl automated capillary electrophoresis platform.

The amplified ITS and *matK*-derived amplicons were purified using Exonuclease I and shrimp alkaline phosphatase and a total of 0.5 µl purified PCR product was sequenced in a 10 µl total volume reaction containing

the previously listed reagents, with amendment of the volume of BigDye® v.3.1 (0.25 µl). The ITS1, ITS4, ITS2 and ITS3 primers [72] were used to fully sequence the ITS region, and the *matK* gene was sequenced using the amplification primers.

Sequence alignment and analyses

To separate homoeologous sequence haplotypes derived from *Acc1* and *CEN*, all sequences obtained from each sample were first aligned using Sequencher 4.7 (Gene Codes). Pairwise distances between all sequences from a given accession were calculated using the maximum composite likelihood nucleotide substitution model implemented in MEGA version 4 [73]. The diploid samples were first analysed to determine a p value threshold that could be used to discriminate between probable allelic (homologous) variation and homoeologous sequence diversity. Each identified group of sequences falling below this threshold were then separately aligned, and consensus sequences were defined for phylogenetic analysis. These putative homoeologous consensus sequences are hereafter described as haplotypes.

For each gene, all haplotypes were aligned using Sequencher 4.7 (Gene Codes) and edited manually as required. For the directly sequenced ITS and *matK* gene products, ambiguous bases were denoted using the standard IUPAC ambiguity codes, and boundaries of the ITS spacers and the 5.8 S gene were determined as previously described [4]. For *Acc1* and *CEN*, intron-exon boundary coordinates were estimated according to those previously determined in bread wheat (*Triticum aestivum* L.) [58] and perennial ryegrass [62]. Measures of variation (variable sites, parsimony informative sites and indels) within the aligned contigs were calculated using MEGA version 4 [73] and DnaSP version 4.90.1 [74].

Phylogenetic reconstruction

Prior to performing phylogenetic analysis, all gaps were coded as binary characters using GapCoder [75]. For each data matrix, parsimony analysis was performed using PAUP* v4.0b10 [76] with heuristic search options, TBR branch swapping and 1000 replicates of random sequence addition. Characters were equally weighted and statistical support was achieved through bootstrapping using 1000 replicates [77].

C. cristatus was used as an out-group species for all data sets, and sequences deposited in GenBank from kentucky bluegrass (*Poa pratensis* L.) and *B. distachyon* were used as more distant out-group species for the more conserved rDNA ITS and *matK* sequence datasets (GenBank accessions AY237833, AF303399, AF164402, AM234568). The *B. distachyon* *Acc1* and *CEN* genes identified in the orthology assessment were also used as out-group sequences for each respective nuclear gene

data set. The Incongruence Length Difference test [78] was used to assess congruence between the nuclear gene data sets and was implemented in PAUP* v4.0b10 through the partition homogeneity test with 1000 replicates.

Results

Orthology assessment

The largest exons (numbers eight and ten of *Acc1*, and two and four of *CEN*) were used to search the *Brachypodium distachyon* genome sequence. For both genes, BLASTN analysis retrieved a single sequence with a below-threshold E value. The *Acc1* orthologue is located on *B. distachyon* chromosome 5, corresponding to the predicted gene bd5g03860, while the *CEN* orthologue is annotated as predicted gene bd4g42400 on chromosome 4.

Ploidy analysis

For all but one sample tested, the relative genome size did not differ by greater than 0.6-fold when calculated using either the measurements of the Ploidy Analyser or from genome size values previously published (Additional file 1). These samples were therefore deemed to have the predicted ploidy level (Table 1). The *F. rupicaprina* sample differed by over two-fold when comparing the two relative genome size measurements, and was subsequently removed from all further analysis.

Isolation of homoeologous sequences

For both *Acc1* and *CEN*, the analysis of pairwise distance between sequences from diploid samples failed to produce a p value of greater than 0.01. Therefore, variation between any two sequences with a p value less than 0.01 was predicted to be the result of allelic variation or sequence error. For the polyploid samples, sequences with a p value of greater than 0.01 were therefore considered likely to be of different sub-genome origin. Each identified group of homoeologous sequences were separately aligned and consensus sequences were defined for phylogenetic analysis. The number of haplotypes identified for each sample is detailed in Table 1.

Sequence analysis

ITS

The amplified ITS region used for phylogenetic analysis consisted of the gene encoding the 5.8 S ribosomal subunit, as well as the two ITS regions that separate this gene from the 18 S and 26 S ribosomal subunit genes (ITS1 and ITS2 respectively). The amplified region ranged from 595 to 599 bp, length variation being attributable to the ITS1 spacer. Both the 5.8 S and ITS2 regions were the same length for all samples, at 269 and 101 bp respectively. After alignment of all ITS sequences, the total contig length was 610 bp and contained 174 variable sites

and 100 parsimony informative sites (Table 3). A total of 25 of the 33 sequenced samples contained at least one ambiguous base. These sequences were deposited in GenBank under the accession numbers HM453173 - HM453199 and the final sequence alignment is included as Additional File 2. For each sample, the generated ITS sequence was compared to accessions from the same species that were previously submitted in GenBank from other studies. This evaluation, along with the comparisons of genome size calculated in this study with prior reports in the literature, was used to confirm the identity of each species.

matK

The amplicon generated using the published *matK* primers contained an extra 65 and 288 bp from the 5'- and 3'-boundaries, respectively, of the *matK* gene. However, only the gene itself was used for analysis. These sequences were deposited in GenBank under the accession numbers HM453050 - HM453076 and the final sequence alignment is included as Additional File 3. The *matK* gene was 1542 bp in length for all samples with the exception of *C. cristatus* (1545 bp). The total contig length used for phylogenetic analysis was 1545 bp and contained 179 variable sites, and 70 parsimony informative sites (Table 3).

Acc1

For the majority of taxa, the number of haplotypes obtained was equivalent to the number of predicted sub-genomes for each species (Table 1). The exceptions were *F. gigantea*, *F. arundinacea* subsp. *atlantigena*, *F. arundinacea* subsp. *letourneuxiana* and the two Mediterranean morphotype varieties Resolute and PG4012, for which the number of derived haplotypes was one less than the ploidy level. The amplified gene fragment contained

8 exons and 7 introns, corresponding to exons 6 to 13 of the full-length wheat gene. The total length ranged from 1525 to 1946 bp, the major size disparities being due to insertions in the first and second introns. *F. valesiaca* contained a 235 bp insertion within the first intron, while a 390 bp insertion was present within the second intron for one haplotype derived from *F. arundinacea* subsp. *atlantigena*. The 8 exons ranged in size from 40 to 188 bp; however there was no size variation between samples within each exon. The 7 introns ranged in size from 73 to 493 bp, and each intron displayed more variation between haplotypes than the exons. The total aligned length of the contig was 2254 bp which included 492 variable sites, 199 parsimony informative sites and 112 indels (Table 3). These haplotypes were deposited in GenBank under the accession numbers HM453077 - HM453124 and the final sequence alignment is included as Additional File 4.

CEN

As for *Acc1*, in the majority of instances the number of haplotypes recovered for a given species was equivalent to the predicted sub-genome number (Table 1). The exceptions were *F. arundinacea* subsp. *letourneuxiana* and the two Mediterranean morphotype tall fescue varieties Resolute and PG4012, for which haplotype number was one less than the ploidy level, and the octoploid *F. arundinacea* subsp. *atlantigena*, from which only two haplotypes were recovered. The amplified gene fragment ranged in size from 903 to 958 bp and contained 4 exons, 3 introns and a region of the 3'-untranslated region (UTR). The 4 exons ranged in size from 41 to 218 bp, also exhibiting no size variation between species and haplotypes. Greater variation was observed between species with respect to intron length, as well as the size of the 3'-UTR which ranged from 42 to 56 bp in size. The total aligned length of the contig was 972 bp, which included 275 variable sites, 122 parsimony informative sites and 44 indels (Table 3). The haplotypes were deposited in GenBank under the accession numbers HM453125 - HM453172 and the final sequence alignment is included as Additional File 5.

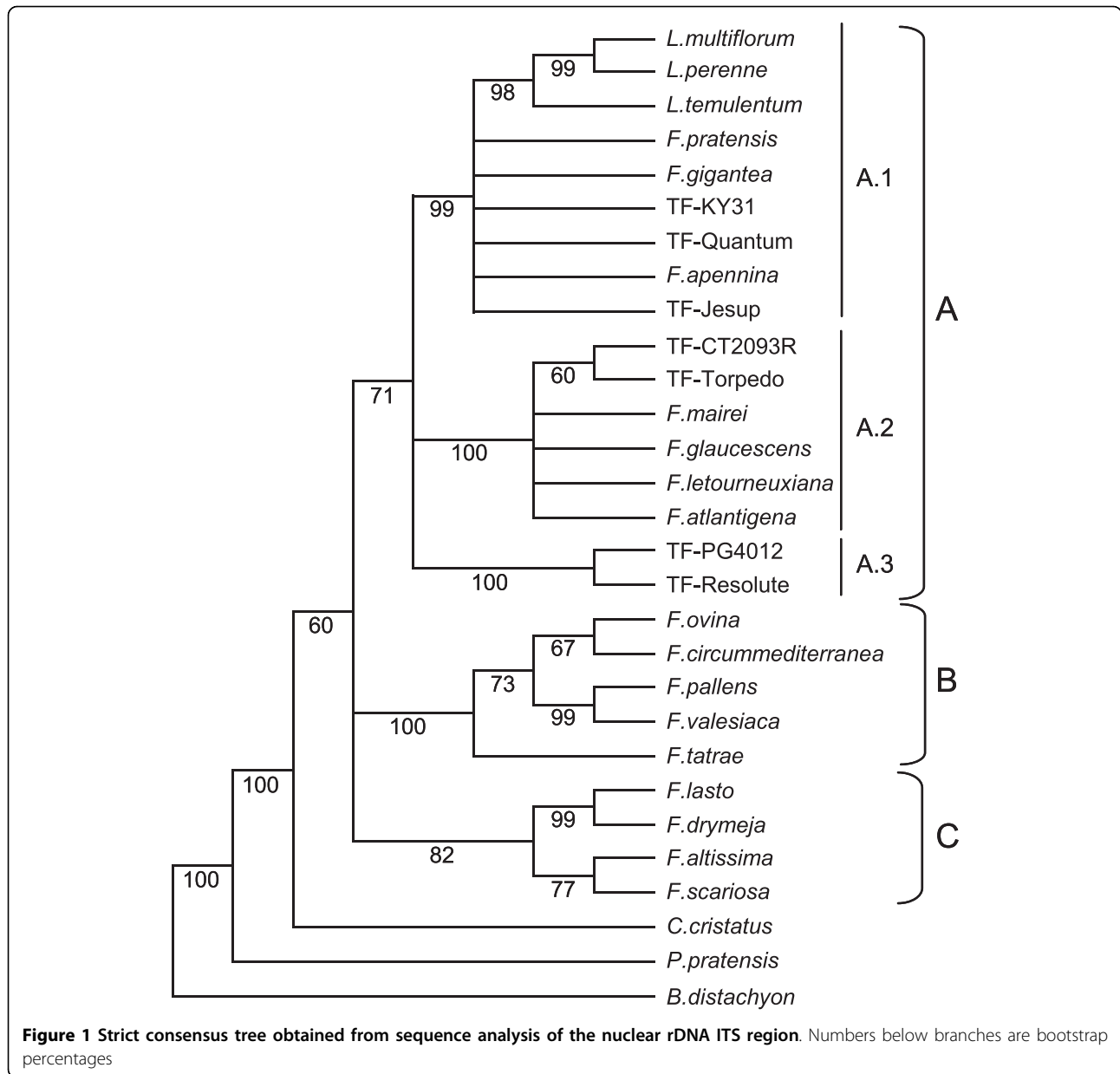
Phylogenetic inference

ITS

The parsimony analysis yielded 36 most parsimonious trees (CI = 0.738;RI = 0.828), the strict consensus of which is shown in Figure 1. This tree resolved three major lineages, in which clades A and B represent the *Schedonorus/Lolium* and *Festuca* sub-genera respectively, and clade C contains representatives of the *Drymanthele* and *Scariosae* sub-genera. Clade A (71% of bootstrap) is further resolved into three well-supported groups (A.1, A.2 and A.3, at 99, 100 and 100% bootstrap levels) which separate the three tall fescue morphotypes.

Table 3 Characteristics of each sequenced region

	Gene			
	<i>Acc1</i>	<i>CEN</i>	ITS	<i>matK</i>
Total aligned length (bp)	2254	972	610	1545
Exon length (bp) min-max	40-188	41-218	-	-
Average exon length	101	128	-	-
Exon std dev min-max	0-0	0-0	-	-
Intron length (bp) min-max	73-493	82-958	-	-
Average intron length	110	119	-	-
UTR length (bp) min-max	-	42-56	-	-
Average UTR length	-	55	-	-
Exon + intron + (UTR) length (bp) min-max	1525-1946	903-958	-	-
Average exon + intron + (UTR) length (bp)	1572	925	-	-
Variable sites	492	275	174	179
Parsimony informative sites	199	122	100	70
Indels	112	44	22	4
Indel length (bp) min-max	1-413	1-32	1-4	6-9



A.1 contains the resolved diploid *Lolium* representatives and six unresolved samples including the three Continental tall fescue varieties, along with one diploid (*F. pratensis*), one tetraploid (*F. pratensis* subsp. *apennina*) and one other hexaploid (*F. gigantea*). Clade A.2 is composed of the two rhizomatous tall fescue varieties (Torpedo and CT2093R) as well as four unresolved samples (*F. mairei*, *F. arundinacea* var. *glaucescens*, *F. arundinacea* subsp. *letourneuxiana* and *F. arundinacea* subsp. *atlantigena*), while clade A.3 consists solely of the two Mediterranean tall fescue varieties (Resolute and PG4012). The diploid fine-leaved species of the *Festuca* sub-genus form group B (100% of bootstrap), and

the third major lineage, C (82% bootstrap), is composed of three *Drymanthele* sub-genus representatives, two which share a sister relationship (*F. lasto* and *F. drymeja*), and the third (*F. altissima*) is related to the one representative of the *Scariosae* sub-genus (*F. scariosa*). *C. cristatus*, *P. pratensis* and *B. distachyon* were outgroups to the entire tree, as anticipated.

matK

A single most parsimonious tree (CI = 0.943, RI = 0.967) resolved into three major clades (A-C) was generated from the heuristic search conducted on the *matK* data matrix (Figure 2). Clade A was further divided into two well-supported sub-clades (A.1 and A.2: 92% and

96% of bootstrap respectively) and a third less-well supported sub-clade A.3 (64% of bootstrap). *F. arundinacea* var. *glaucescens* and the Continental and rhizomatous tall fescue varieties were unresolved in A.1, while A.2 consists of the three unresolved *Lolium* species in sister relationships to the unresolved group containing *F. pratensis*, *F. pratensis* subsp. *apennina* and *F. gigantea*. Sub-clade A.3 consists of three unresolved samples (*F. mairei*, *F. arundinacea* subsp. *atlantigena* and *F. arundinacea* subsp. *letourneuxiana*) and the two Mediterranean tall fescue varieties. Representatives of the *Drymanthele* sub-genus comprise clade B (99% bootstrap), while clade C (100% bootstrap) contains the fine-leaved species from the *Festuca* sub-genus. *C. cristatus*, *P. pratensis* and *B. distachyon* are out-groups to the entire tree.

Acc1

The heuristic search conducted on the *Acc1* data matrix resulted in 504 most parsimonious trees (CI = 0.830; RI = 0.878), the strict consensus of which is shown in Figure 3. This tree can be divided into four major lineages (A-D), in which clades A and B contain representatives of the *Schedonorus/Lolium* sub-genus, and clades C and D are assemblages of the diploids from the *Drymanthele* and *Festuca* sub-genera, respectively. Within clade A, haplotypes from *F. arundinacea* subsp. *letourneuxiana* and *F. arundinacea* subsp. *atlantigena*, along with an assemblage of *F. pratensis* subsp. *apennina* and *F. gigantea*, are in sister relationships to the remainder of the clade, which has been further partitioned into sub-clades A.1 and A.2. Sub-clade A.1 (91% of bootstrap) contains haplotypes from the two Mediterranean tall fescue varieties sister to the rest of A.1,

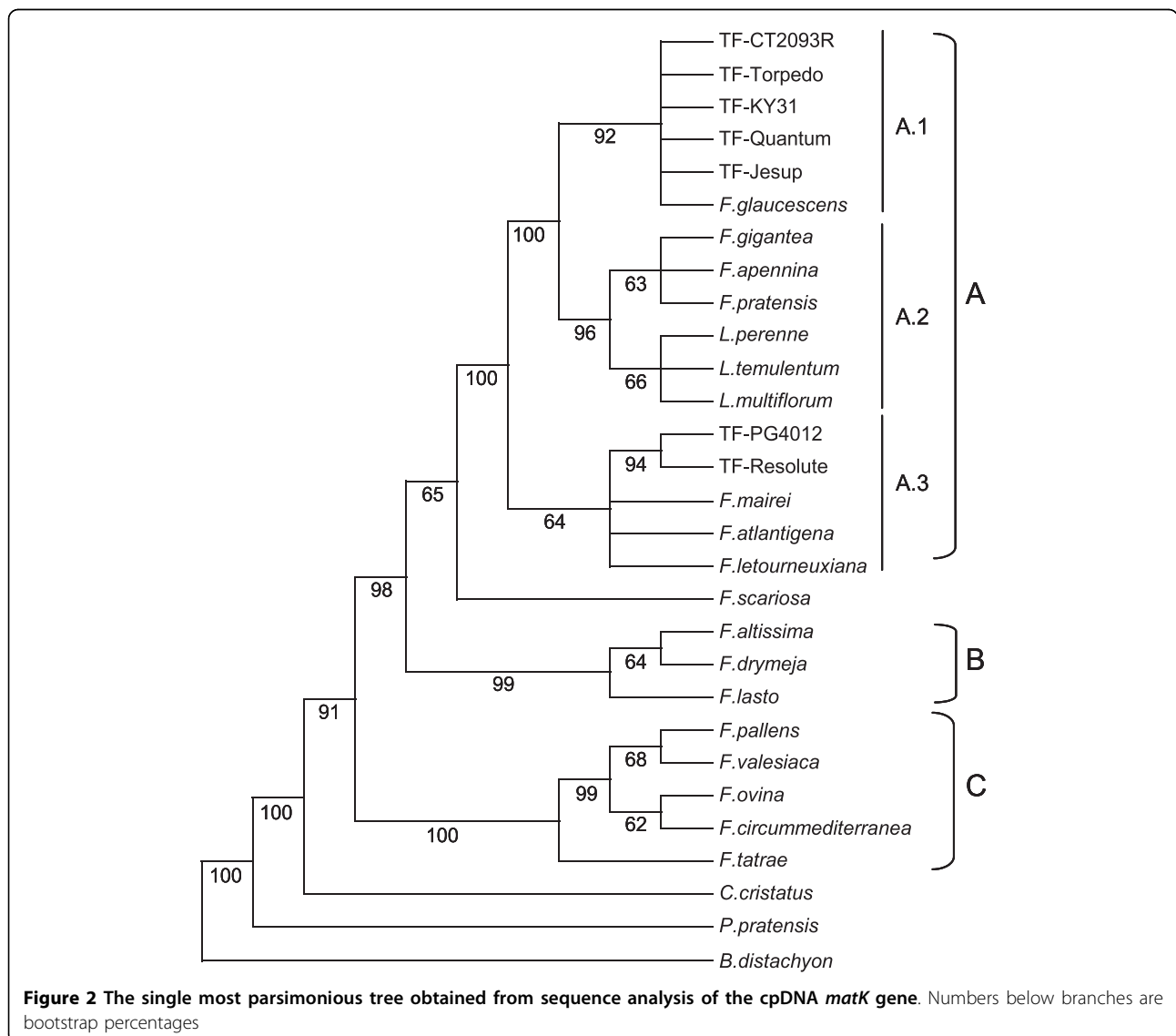
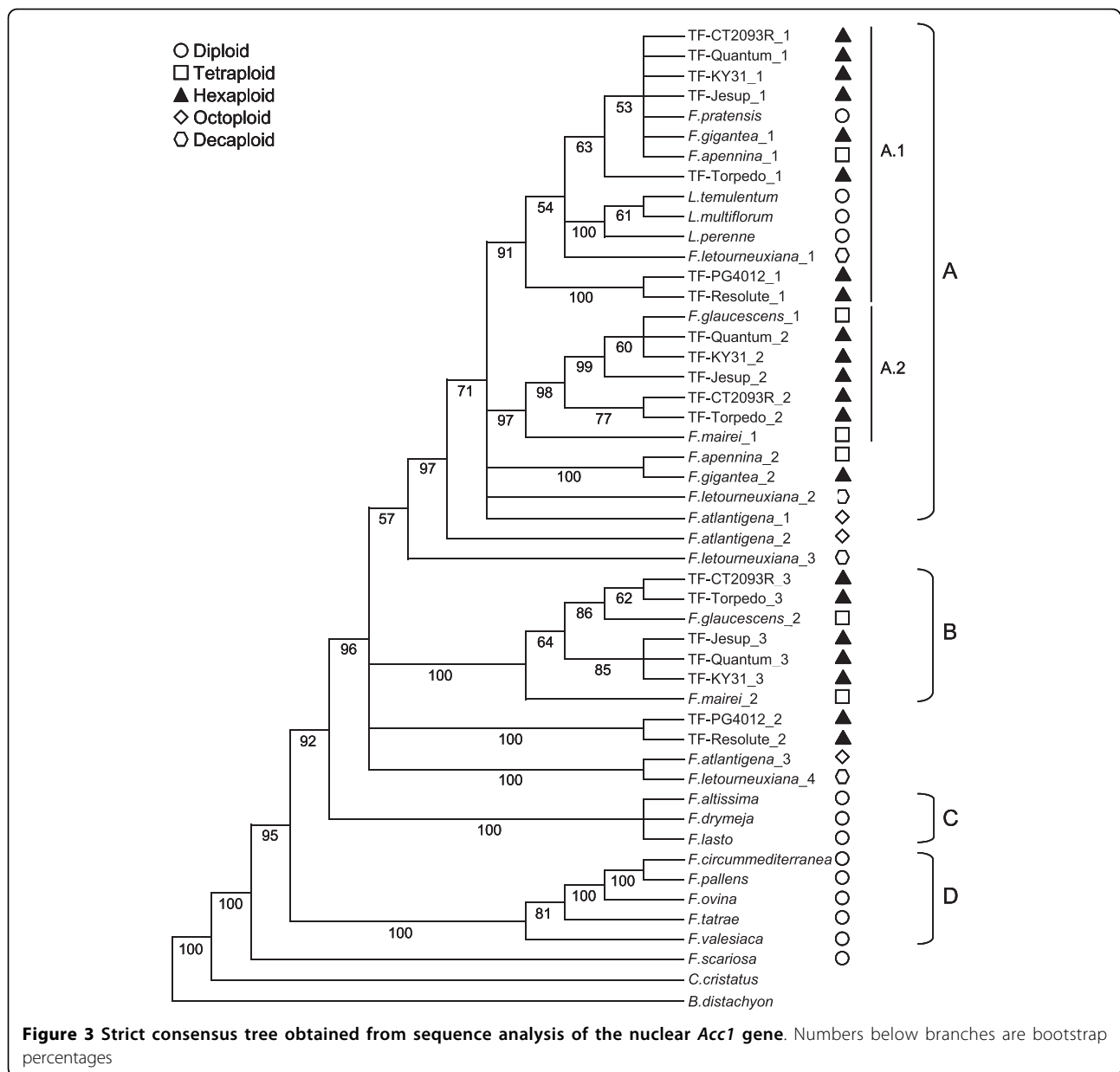


Figure 2 The single most parsimonious tree obtained from sequence analysis of the cpDNA *matK* gene. Numbers below branches are bootstrap percentages



which includes the monophyletic *Lolium* species and an unresolved group of one rhizomatous and three Continental tall fescue haplotypes, along with *F. pratensis*, *F. pratensis* subsp. *apennina* and *F. gigantea*. The second rhizomatous tall fescue variety and a haplotype derived from *F. arundinacea* subsp. *letourneuxiana* complete sub-clade A.1. Within sub-clade A.2 (97% of bootstrap), haplotypes from Continental tall fescue are unresolved from an *F. arundinacea* var. *glaucescens* haplotype, while rhizomatous tall fescue haplotypes are sister to this group along with *F. mairei*. *F. arundinacea* subsp. *letourneuxiana* and *F. arundinacea* subsp. *atlantigena* haplotypes are basal to the remainder of clade A. Clade B is well supported (100%

of bootstrap) and comprises another group of Continental and rhizomatous tall fescue haplotypes that are related to *F. arundinacea* var. *glaucescens* and again, this group is sister to *F. mairei*. Haplotypes of the two Mediterranean tall fescue samples share a sister relationship, as do the higher-order polyploids (*F. arundinacea* subsp. *atlantigena* and *F. arundinacea* subsp. *letourneuxiana*) and these two groups collapse unresolved alongside clade B. Clade C (100% of bootstrap) is an unresolved monophyletic group consisting solely of the three *Drymanthele* species, while the final clade, D (100% of bootstrap), contains the fine-leaved diploid species of the *Festuca* sub-genus, in which each species is fully resolved. *F. scariosa* holds the most

basal position among the *Festuca* species, with *C. cristatus* and *B. distachyon* positioned as out-groups.

CEN

The consensus of 15 most parsimonious trees (CI = 0.852, RI = 0.926) derived from the heuristic search of the *CEN* data matrix is shown in Figure 4. This tree has been divided into five lineages (A-E), in which A, B and C comprise species from the *Schedonorus/Lolium* sub-genus, D represents the *Drymanthele* and *Scariosae* sub-genera and E contains species from the fine-leaved *Festuca* sub-genus. Within clade A (93% of bootstrap), the sequence of *L. multiflorum* and haplotypes from *F. gigantea*, *F. arundinacea* subsp. *letourneuxiana* are positioned as sister to two well supported sub-clades (A.1 and A.2). Sub-clade A.1 (100% of bootstrap) is formed from the Continental and rhizomatous tall fescue varieties and unresolved haplotypes from *F. pratensis*, *F. pratensis* subsp. *apennina* and *F. gigantea*. The Mediterranean varieties, along with the *L. temulentum*-derived sequence, then comprise the remainder of A.1. Sub-clade A.2 (89% of bootstrap) again demonstrates close relationships between haplotypes from Continental and rhizomatous tall fescue varieties, and also contains unresolved haplotypes from *F. arundinacea* var. *glaucescens*, *F. mairei*, *F. arundinacea* subsp. *atlantigena*, and *F. arundinacea* subsp. *letourneuxiana*. This monophyletic group is near identical to clade C (77% of bootstrap), which contains haplotypes from all of the same species and displays equivalent structure for *F. arundinacea* var. *glaucescens*, *F. mairei*, *F. arundinacea* subsp. *atlantigena*, and *F. arundinacea* subsp. *letourneuxiana* which are again, all unresolved. The remainder of the *Schedonorus/Lolium*-derived haplotypes are either resolved into the small clade B (*F. gigantea*, *F. pratensis* subsp. *apennina* and *L. perenne*: 97% of bootstrap) or are positioned as out-groups to both clades A and B (both Mediterranean varieties and *F. arundinacea* subsp. *letourneuxiana*). The diploids of the *Drymanthele* sub-genus are unresolved within clade D (97% of bootstrap), which also contains the only representative of the *Scariosae* sub-genus (*F. scariosa*), while clade E is a well supported (100% of bootstrap) monophyletic group containing species from the diploid fine-leaved *Festuca* sub-genus. *C. cristatus* and *B. distachyon* form out-groups.

Congruence between nuclear gene-derived data sets

The *Acc1* and *CEN* gene-derived phylogenetic trees share similar structure, particularly with respect to relationships between the three tall fescue morphotypes and the division of other *Schedonorus* haplotypes. Both trees reveal comparable evolutionary patterns, *Acc1* clade A corresponding to *CEN* sub-clade A, and *Acc1* clade B corresponding to most of *CEN* clade C. The remaining *Acc1* clades C and D correspond to lineages D and E in the *CEN*-derived dendrogram. The larger source of

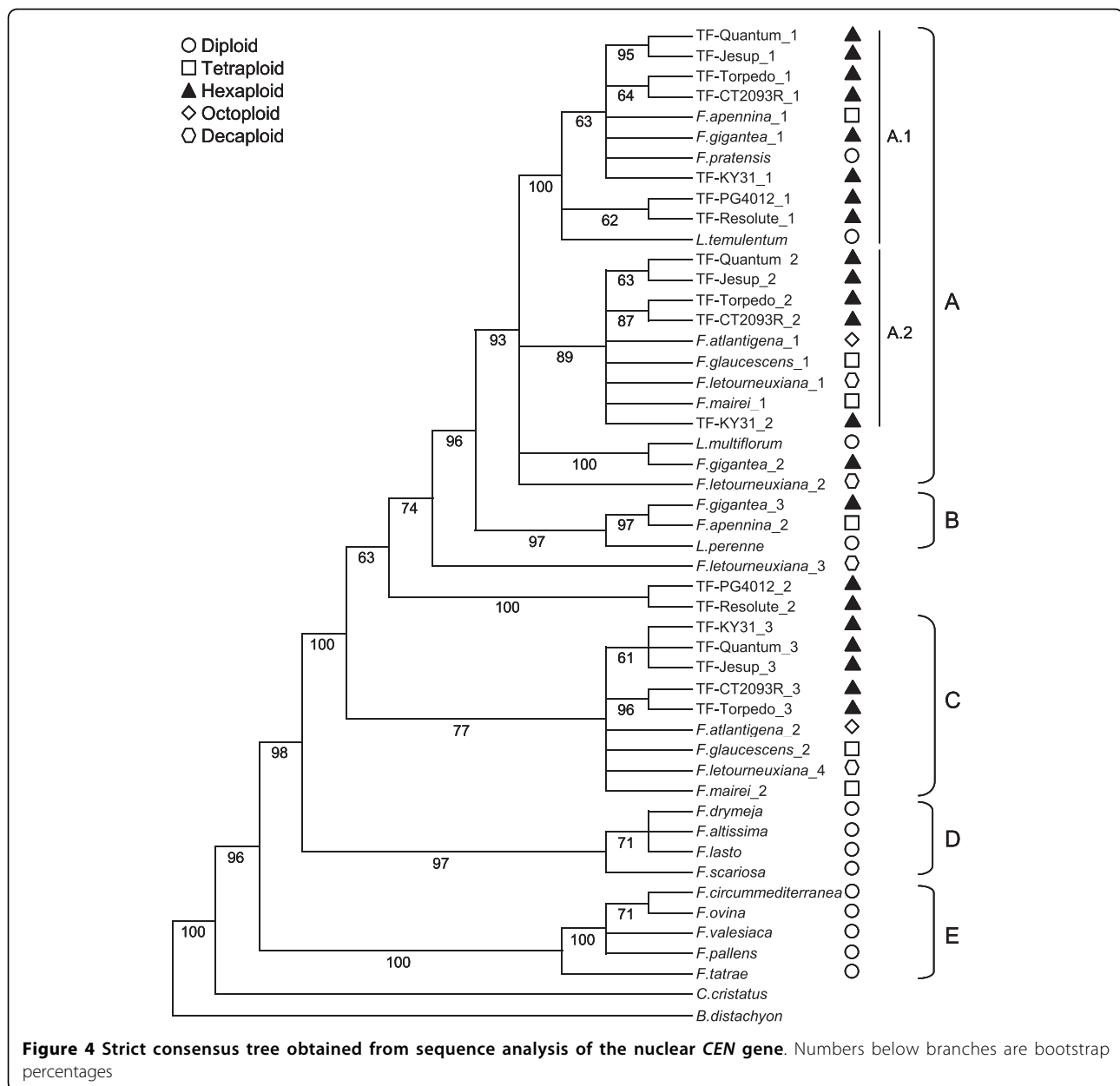
discordance between the two data sets arises with respect to the *Lolium* species and to *F. scariosa*. While the *Acc1* gene demonstrates little distinction between the three sampled *Lolium* species, which form a monophyletic group within the *F. pratensis*-containing sub-clade A.1, the *CEN* gene detects a much higher level of variation, such that the three species are distributed throughout the phylogenetic tree in different clades (A.1 - *L. temulentum*, A - *L. multiflorum* and B - *L. perenne*). Similarly, *F. scariosa* exchanges clade location between the two data sets. Within the *Acc1* gene-derived dendrogram, this species is in a basal position to all other *Festuca/Lolium* species, whereas it is positioned as sister to *Drymanthele* sub-genus species in the *CEN* phylogenetic tree. The Incongruence Length Difference test implies significant incongruence between the two nuclear gene data sets ($p = 0.01$).

Discussion

Phylogenetic relationships between each tall fescue morphotype

This phylogenetic study has, for the first time, assessed evolutionary relationships between the three morphotypes of hexaploid tall fescue, which are distinct in geographical and morphophysiological terms. The dendrograms generated from both of the nuclear gene-derived data sets suggest that representatives of the Mediterranean morphotype are genetically distinct from the Continental and rhizomatous varieties sampled here, supporting the observations of hybrid sterility between tall fescue morphotypes [38,39]. It may be assumed that, for each nuclear gene, the three haplotypes recovered from the Continental tall fescue varieties represent the three sub-genomes, as in each case the relevant haplotypes are closely associated with counterparts from *F. pratensis* and *F. arundinacea* var. *glaucescens*. The Mediterranean morphotype-derived nuclear sequences are, however, more distantly related to these progenitor species, implying that they (or closely related taxa) did not participate as direct ancestors of this morphotype. Both the ITS- and *matK* gene-derived dendrograms also support an alternative polyploid origin for the Mediterranean morphotype, despite inability to resolve to the level of individual sub-genomes. For each of these data sets, the Mediterranean varieties fail to be closely associated with either *F. pratensis* or *F. arundinacea* var. *glaucescens*, in contrast to the Continental and rhizomatous samples.

Full interpretation of taxon origin for the polyploid Mediterranean morphotype is rendered difficult due to the recovery of only two distinct sequence haplotypes for each of the nuclear genes. The two Mediterranean variety-derived genotypes may be confidently predicted to be hexaploid in nature, despite a relatively lower estimated



genome size as compared to the Continental varietal individuals. This observed difference in genome size was not unexpected, as previous studies have consistently reported lower flow cytometric measurement values from confirmed hexaploid Mediterranean accessions when compared to the samples from the Continental morphotype [79]. Therefore, a relatively trivial explanation for the observation of only two haplotypes is that three distinct sub-genomes are actually present in the Mediterranean morphotype, but one sub-genome is sufficiently diverged from the template primer sequence to be inefficiently amplified and hence under-represented in, or absent from, the contig assemblies. However, the success

observed with the *Acc1* and *CEN*-directed primer pairs across a diverse species range, including more distantly related taxa such as *C. cristatus*, suggests that this interpretation is unlikely. In addition, the depth of sequencing employed proved more than sufficient to recover all three haplotypes from the Continental and rhizomatous tall fescue samples. Alternatively, only two sequence variants may be present in the Mediterranean hexaploids, raising the possibility of an autotetraploid progenitor. In order for disomic inheritance to operate in the contemporary hexaploid, preferential pairing must have arisen between chromosomes of the paired sub-genomes, possibly due to genetic divergence [80], later reinforced by

homoeologous pairing gene control [81]. Confirmation of this model would depend on demonstration of haplotype number deficit across a broader selection of nuclear genes, and, ideally, identification of a contemporary auto-tetraploid taxon related to the putative ancestor. However, no potential progenitors of the Mediterranean morphotype were identified in this study. Such species may be extinct, or have failed to be sampled in taxonomic studies. If still extant, any such progenitors are likely to be taxonomically classified in the *Schedonorus* sub-genus and be located in a similar region (Northern Africa/Western Mediterranean) to both Mediterranean tall fescue and the higher polyploids *F. arundinacea* subsp. *atlantigena* and *F. arundinacea* subsp. *letourneuxiana*. No diploid ancestors of any of the western Mediterranean species (identified by Figure 1 clade A.2) have yet been identified, and so may have become extinct as a result of climate changes associated with glaciation periods, or, less likely, have evaded discovery [1].

The results of this study indicate a close relationship between the Continental and rhizomatous morphotypes, at least for the varieties sampled here, as they are closely associated in both the nuclear gene dendrograms, while displaying sufficient nucleotide variation to be fully resolved from each other. In each instance, the rhizomatous morphotype putative sub-genomic haplotypes are as equally related to *F. pratensis* and *F. arundinacea* var. *glaucescens* as those of Continental individuals, suggesting that these two morphotypes share the same progenitors. The ITS-derived data set provides a distinct indication for separation by a large evolutionary distance, as the Continental and rhizomatous samples are positioned in the 'European' (Clade A.1) and 'Maghrebian' (Clade A.2) sub-clades, respectively. These two sub-clades reflect geographical structure and consistently segregate between the Northern European and African/Western Mediterranean *Schedonorus* species in previous phylogenetic studies performed with ITS sequence [1,4,5]. Information on shared diploid ancestry, however, cannot be obtained through comparison of ITS sequence, as the contributions of each parental genome are generally homogenised to one sequence through the action of either gene conversion or non-homologous unequal crossing-over [82-85]. The evidence of the ITS-derived dendrogram therefore only indicates that the Continental and rhizomatous morphotypes have evolved independently over a sufficient duration to permit differential ITS homogenisation events.

Phylogenetic inferences from ITS- and *matK*-derived sequence data

The overall general structure of the dendrogram generated from the ITS data set is consistent with those previously published [1,3-6]. As in these studies, the results

support the taxonomic classification of Clayton and Renvoize [2] and early divergence of the broad- and fine-leaved *Festuca* species. A lower level of basal resolution was achieved here, however, as the *Schedonorus*, *Festuca* and *Drymanthele* sub-genera form three sister clades (Figure 1, Clades A, B, C) rather than the usual two representing the broad-leaved (*Schedonorus* and *Drymanthele* subgenera) and fine-leaved (*Festuca* sub-genus) species. As clades A and C are less strongly supported (71 and 82% of bootstrap), this disparity is most likely due to minor differences in phylogenetic methodology. In contrast, the *matK* gene was able to effectively resolve the broad and fine-leaved species, and also provided a higher level of resolution in the *Schedonorus* sub-genus (Figure 2, Clade A). Previous phylogenetic analysis of the *Festuca* genus using chloroplast-derived sequence was performed using the *trnL-trnF* intergenic spacer [5] and achieved similar resolution to that produced here. The main difference between the ITS- and *matK*-derived dendrograms is the highly supported (92% of bootstrap) formation of sub-clade A.1 (Figure 2) from the *matK* data set, which segregates *F. arundinacea* var. *glaucescens* and both the Continental and rhizomatous tall fescue samples from the remaining 'European' *Schedonorus/Lolium* species. As the chloroplast genome is almost always inherited solely from the female parent, this assemblage probably indicates that a taxon closely related to *F. arundinacea* var. *glaucescens* has provided the maternal genome for both the Continental and rhizomatous tall fescue morphotypes. The Mediterranean varieties form a close association with *F. mairei* and the higher polyploids *F. arundinacea* subsp. *atlantigena* and *F. arundinacea* subsp. *letourneuxiana* in the *matK* dendrogram, which raises the possibility of these polyploids sharing a maternal ancestor. While this close relationship with *F. mairei* is not supported by data from the two nuclear genes, it is not feasible to determine whether this is due to the absence of three distinct haplotypes from the Mediterranean varieties or if the association from the chloroplast data is an aberration as a result of low phylogenetic resolution. The *matK* gene analysis, in summary, predicts *F. pratensis* as the maternal genome donor of *F. gigantea* and *F. pratensis* subsp. *apennina*, while one of the G₁ or G₂ progenitor genomes appears to have contributed the maternal genome of *F. arundinacea* var. *glaucescens* and both the Continental and rhizomatous tall fescue morphotypes. Mediterranean tall fescue shares a maternal origin with *F. mairei* and the higher polyploids *F. arundinacea* subsp. *atlantigena* and *F. arundinacea* subsp. *letourneuxiana*.

Possible diploid origins of polyploid *Festuca* species

Although the nuclear gene-derived data sets confirm *F. pratensis* and *F. arundinacea* var. *glaucescens* as

probable progenitors of Continental tall fescue, the diploid origins of the G₁ and G₂ sub-genomes of *F. arundinacea* var. *glaucescens* could not be determined from either dendrogram. The results do, however, permit some previously proposed diploid species to be excluded as candidate sub-genome donors. *F. altissima* and *F. scariosa* have been previously suggested as diploid progenitors of Continental tall fescue based on morphological comparisons [15] and comparison of chromosome structure [21], but sequences from these two species were never closely associated with any tall fescue haplotype in this phylogenetic analysis. The present results do support cytogenetic studies that indicate an allotetraploid origin for *F. arundinacea* var. *glaucescens* [13], as two distinct haplotypes are observed, and that *F. pratensis* did not contribute either sub-genomes [19]. It has been further proposed that *F. arundinacea* var. *glaucescens* and *F. mairei* may share a diploid sub-genome, based on chromosome structure and the formation of bivalents in hybrids [21,86]. The nuclear gene analysis here indicate a high degree of similarity between both sub-genomes of these tetraploids, to the extent that they are unresolved in the *CEN* gene-derived dendrogram. Sequence from the ITS region was also unable to resolve the two species, and only the chloroplast *matK* gene data set suggests a large evolutionary distance, possibly due to different maternal progenitor taxa.

As the number of recovered nuclear gene haplotypes failed to correspond to the number of expected diploid sub-genomes, resolution of genomic constitutions for the higher polyploids *F. arundinacea* subsp. *atlantigena* (octoploid) and *F. arundinacea* subsp. *letourneuxiana* (decaploid) has not been possible. Nonetheless, the two sub-species are minimally differentiated in all the dendrograms, and contain haplotypes that cannot be resolved from those of *F. arundinacea* var. *glaucescens* and *F. mairei* in the *CEN* gene-derived dendrogram. As the *Acc1* data set provides higher resolution, the association appears more distant, but it is clear that both *F. arundinacea* var. *glaucescens* and *F. mairei* are closely related to the higher polyploids, and either may have contributed to the formation of these species. Crosses of the two tetraploids produce fertile hybrids that resemble *F. arundinacea* subsp. *atlantigena*, further supporting the speculation that such a hybridisation occurred naturally to produce the octoploid [13]. In this case, the absence of four haplotypes from *F. arundinacea* subsp. *atlantigena* may be due to the inability to discriminate between the *F. arundinacea* var. *glaucescens* and *F. mairei* sub-genome components, which are poorly resolved at the species level by nuclear gene analysis.

All of the phylogenetic trees support strong evolutionary relationships between the 'European' fescue species

(*F. pratensis*, *F. pratensis* subsp. *apennina* and *F. gigantea*). Data from both of the nuclear genes suggest that the hexaploid *F. gigantea* was formed through the hybridisation of *F. pratensis* subsp. *apennina* and another diploid species, and that *F. pratensis* is only one of the diploid progenitors of *F. pratensis* subsp. *apennina*. This is consistent with previous studies demonstrating the allopolyploid nature of *F. pratensis* subsp. *apennina* [87] and a common diploid sub-genome (related to *F. pratensis*) between tall fescue and *F. gigantea* [22].

Phylogenetic utility of *Acc1* and *CEN* genes

The location of the *B. distachyon* *Acc1* and *CEN* orthologues on chromosomes 5 and 4, respectively, is consistent with known macrosynteny between the Triticeae cereals, Poae grasses and *B. distachyon* [64,65,65,69] and further supports the positioning of these loci on different homeologous groups within tall fescue. A considerable degree of confidence may therefore be placed in conclusions of hybrid origin, as they are supported by data from two unlinked loci, rather than a single nuclear gene. Both data sets predict very similar relationships between the *Festuca* species, the higher resolution achieved from *Acc1* being probably due to the result of greater sequence length and the presence of 7 introns (in contrast to 3 in *CEN*), which provide a greater level of nucleotide variation as compared to exons. While the *Acc1* gene has previously been demonstrated to be effective for clarification of the hybrid origin of polyploid species through phylogenetic reconstruction [59-61], this was the first recorded assessment of *CEN* utility. This gene was originally selected due to verified low copy number in perennial ryegrass [62], along with the presence of introns and ability to be amplified as a single product from the range of species used here. The *CEN* dendrogram was able to confirm the majority of evolutionary relationships observed from the *Acc1* data set, but the observed polyphyly of *Lolium* species is inconsistent with all other phylogenetic studies, and is possibly an effect of differential selection acting on genes involved in reproductive morphogenesis. Although the multilocus approach used here is crucial for providing independent estimates of evolutionary history, the subsequent independent history of each loci must be considered. *Acc1* may be described as a 'housekeeping' gene, as it is involved in fatty acid biosynthesis and is hence likely to be subject to strong but even selective pressure across a large range of species. *CEN*, in contrast, is involved in flowering time control, and represses flowering by maintaining the unfixed identity of the inflorescence meristem [62]. Experiments have shown that this gene, among others, is involved in extending the vegetative state of the plant [88-91]. It is therefore possible that *CEN* is under different selective pressure in different species, depending on their geographical distribution and habitat, and that the nucleotide variation reflects

these pressures. It is interesting that such variation is only apparent within the *Lolium* species, for which variation in annual-perennial growth habit and floral induction requirements has been well documented. The evolutionary lineages described by *CEN* for the remaining *Festuca* species are the same as those predicted for *Acc1*. In general, the *CEN* gene can be described as useful for phylogenetic reconstruction in the *Festuca/Lolium* genera, as it confirmed the majority of relationships produced by *Acc1* and the ITS data sets. The unexpected placement of *Lolium* species reinforces the importance of comparison between data from multiple unlinked loci when assessing evolutionary relationships.

Future implications

The results of this study have contributed to the understanding of evolutionary relationships within a group of grass species for which previous taxonomic classifications have been contentious. In particular, a further revision of systematics to recognise the Mediterranean and Continental morphotypes of tall fescue as separate taxa appears to be warranted. The implications of these results, however, reach beyond taxonomy and have the potential to impact on molecular breeding strategies. For example, the demonstration of independent evolution between the Mediterranean and Continental morphotypes suggests sufficient nucleotide variation to allow development of molecular genetic markers capable of discrimination, to enable an uncomplicated germplasm screening method which is simpler and cheaper than sequencing. The ability to distinguish sequences from all three sub-genomes of Continental and rhizomatous tall fescue in this study also has implications for the generation of sub-genome-specific genetic markers, such as single nucleotide polymorphism assays, as has been demonstrated for the outbreeding allotetraploid forage species white clover (*Trifolium repens* L.) [92]. This result implies that the diversity between each sub-genome is sufficient to design sub-genome specific primers, and ultimately detect DNA sequence polymorphisms that are able to attribute homoeologous linkage groups to specific sub-genomes and putative progenitor origins [92,93].

Conclusions

This study describes the first phylogenetic analysis of the *Festuca* genus to include each of the three tall fescue morphotypes (Continental, Mediterranean and rhizomatous) and has used low copy nuclear gene sequences to identify progenitors of the polyploid species. *F. pratensis* and *F. arundinacea* var. *glaucescens* were confirmed as the probable progenitors of Continental tall fescue, and also as likely ancestors of the rhizomatous morphotype, although these two morphotypes are sufficiently diverse to be positioned in separate clades based on ITS analysis.

Phylogenetic reconstruction of all four data sets suggests that Mediterranean tall fescue has evolved independently from both other morphotypes, as a result from hybridisation of different diploid progenitors. These results have implications for taxonomic revision, as well as molecular breeding strategies, and will facilitate the generation of both morphotype and sub-genome-specific molecular genetic markers.

Additional material

Additional file 1: Relative genome size of each sample. Genome size was calculated relative to *F. pratensis*, using measurements from both the Ploidy Analyser and previously published estimates. For each sample, Ploidy Analyser measurements represent the average of two readings, with the exception of tall fescue varieties, for which four measurements were made. The previously published estimates represent an average of the respective genome sizes, as reported in multiple prior publications. The extent of error bars represent the standard error of the mean.

Additional file 2: Sequence alignment of the ITS region. Sequence alignment, in NEXUS format, used to generate the ITS phylogenetic tree

Additional file 3: Sequence alignment of *matK*. Sequence alignment, in NEXUS format, used to generate the *matK* phylogenetic tree

Additional file 4: Sequence alignment of *Acc1*. Sequence alignment, in NEXUS format, used to generate the *Acc1* phylogenetic tree

Additional file 5: Sequence alignment of *CEN*. Sequence alignment, in NEXUS format, used to generate the *CEN* phylogenetic tree

Acknowledgements

The authors acknowledge the contribution of plant material from the Genetic Resources Unit of IBERS, Aberystwyth, Wales and particularly the efforts of Ianto Thomas. This work represents part of a PhD degree for MH who is supported by an Australian Postgraduate Award. The work was also supported by funding from the Victorian Department of Primary Industries, Dairy Australia Ltd., the Geoffrey Gardiner Dairy Foundation, Meat and Livestock Australia Ltd. and the Molecular Plant Breeding Cooperative Research Centre (MPB CRC). The authors thank Prof. German Spangenberg for careful critical reading of the manuscript.

Author details

¹Department of Primary Industries, Biosciences Research Division, Victorian AgriBiosciences Centre, 1 Park Drive, La Trobe University Research and Development Park, Bundoora, Victoria 3083, Australia. ²Molecular Plant Breeding and Dairy Futures Cooperative Research Centres, Australia. ³La Trobe University, Bundoora, Victoria 3086, Australia. ⁴PGG Wrightson Seeds, P. O. Box 175, Lincoln 7640, Canterbury, New Zealand.

Authors' contributions

MH carried out the ploidy analysis, extracted the DNA, generated the DNA sequences, performed the phylogenetic analysis and drafted the manuscript. NC and JF co-conceptualised and coordinated the project, contributed to data interpretation and assisted in drafting the manuscript. AS provided plant material, contributed to data interpretation and assisted in drafting the manuscript. All authors read and approved the final manuscript.

Received: 2 June 2010 Accepted: 12 October 2010

Published: 12 October 2010

References

1. Inda LA, Segarra-Moragues JG, Müller J, Peterson PM, Catalán P: Dated historical biogeography of the temperate Lolinae (Poaceae, Pooideae) grasses in the northern and southern hemispheres. *Molecular Phylogenetics and Evolution* 2008, **46**(3):932-957.

2. Clayton W, Renvoize S: *Genera graminum*. London, UK: Kew Publishing 1986.
3. Charmet G, Ravel C, Balfourier F: Phylogenetic analysis in the *Festuca-Lolium* complex using molecular markers and ITS rDNA. *TAG Theoretical and Applied Genetics* 1997, **94**(8):1038.
4. Torrecilla P, Catalán P: Phylogeny of broad-leaved and fine-leaved *Festuca* lineages (Poaceae) based on nuclear ITS sequences. *Systematic Botany* 2002, **27**(2):241-251.
5. Catalán P, Torrecilla P, Rodríguez JÁL, Olmstead RG: Phylogeny of the festucoid grasses of subtribe Loliinae and allies (Poaceae, Pooideae) inferred from ITS and *trnL-F* sequences. *Molecular Phylogenetics and Evolution* 2004, **31**(2):517-541.
6. Gaut BS, Tredway LP, Kubik C, Gaut RL, Meyer W: Phylogenetic relationships and genetic diversity among members of the *Festuca-Lolium* complex (Poaceae) based on ITS sequence data. *Plant Systematics and Evolution* 2000, **224**(1):33-53.
7. Loureiro J, Kopecký D, Castro S, Santos C, Silveira P: Flow cytometric and cytogenetic analyses of Iberian Peninsula *Festuca* spp. *Plant Systematics and Evolution* 2007, **269**(1):89-105.
8. Smarda P, Bures P, Horova L, Foggi B, Rossi G: Genome size and GC content evolution of *Festuca*: ancestral expansion and subsequent reduction. *Annals of Botany* 2008, **101**(3):421-433.
9. Terrell EE: A taxonomic revision of the genus *Lolium*. *Technical Bulletin of the United States Department of Agriculture* 1968, 1392.
10. Scholz H, Ch S, Gaisberg MV: *Lolium edwardii* sp. nova (Gramineae) and its relationship with *Schedonorus* sect. *Plantynia* Dumort. *Feddes Repertorium* 2000, **111**(7-8):561-565.
11. Scholz S, Scholz H: A new species of *Lolium* (Gramineae) from Fuerteventura and Lanzarote (Canary Islands, Spain). *Willendowia* 2005, **35**:281-286.
12. Darbyshire S: Realignment of *Festuca* subgenus *Schedonorus* with the genus *Lolium* (Poaceae). *Novon* 1993, **3**:239-243.
13. Chandrasekharan P, Thomas H: Studies in *Festuca*. V. Cytogenetic relationships between species of Bovinae and Scariosae. *Zeitschrift für Pflanzenzüchtung* 1971, **65**:353-354.
14. Borrill M, Kirby MW, Morgan G: Studies in *Festuca* 11. Interrelationships of some putative diploid ancestor of the polyploid broad-leaved fescues. *New Phytologist* 1977, **78**(3):661-674.
15. Borrill M, Kirby M, Morgan G: Studies in *Festuca* 12. Morphology, distribution and cytogenetics of *F. donax*, *F. scariosa* and their hybrids, and the evolutionary significance of their fertile amphiploid derivative. *New Phytologist* 1980, **86**(4):423-439.
16. Malik CP, Thomas PT: Karyotypic studies in some *Lolium* and *Festuca* species. *Caryologia* 1966, **19**:167-196.
17. Malik CP, Thomas PT: Cytological relationship and genome structure of some *Festuca* species. *Caryologia* 1967, **20**:1-39.
18. Seal AG: DNA variation in *Festuca*. *Heredity* 1983, **50**(3):225-236.
19. Humphreys MW, Thomas HM, Morgan WG, Meredith MR, Harper JA, Jones RN, Zwierzykowski Z, Ghesquiere M: Discriminating the ancestral progenitors of hexaploid *Festuca arundinacea* using genomic *in situ* hybridization. *Heredity* 1995, **75**(2):171-174.
20. Pasakinskiene I, Anamthawat-Jonsson K, Humphreys MW, Paplauskienė V, Jones RN: New molecular evidence on genome relationships and chromosome identification in fescue (*Festuca*) and ryegrass (*Lolium*). *Heredity* 1998, **81**(6):659-665.
21. Harper JA, Thomas ID, Lovatt JA, Thomas HM: Physical mapping of rDNA sites in possible diploid progenitors of polyploid *Festuca* species. *Plant Systematics and Evolution* 2004, **245**(3):163-168.
22. Thomas HM, Harper JA, Meredith MR, Morgan WG, King IP: Physical mapping of ribosomal DNA sites in *Festuca arundinacea* and related species by *in situ* hybridization. *Genome* 1997, **40**:406-410.
23. Xu WW, Slepser DA: Phylogeny of tall fescue and related species using RFLPs. *TAG. Theoretical and Applied Genetics* 1994, **88**(6):685-690.
24. Stammers M, Harris J, Evans GM, Hayward MD, Forster JW: Use of random PCR (RAPD) technology to analyse phylogenetic relationships in the *Lolium/Festuca* complex. *Heredity* 1995, **74**(1):19-27.
25. Reed KFM, Clement SL, Feely WF, Clark B: Improving tall fescue (*Festuca arundinacea*) for cool-season vigour. *Australian Journal of Experimental Agriculture* 2004, **44**(9):873-881.
26. Robson M: A comparison of British and North African varieties of tall fescue 1. Leaf growth during winter; effects of temperature and day length. *Journal of Applied Ecology* 1967, **4**:475-484.
27. Clement SL, Elberson LR, Youssef NN, Davitt CM, Doss RP: Incidence and diversity of *Neotyphodium* fungal endophytes in tall fescue from Morocco, Tunisia, and Sardinia. *Crop Science* 2001, **41**(2):570-576.
28. Tsai HF, Liu JS, Staben C, Christensen MJ, Latch GC, Siegel MR, Scharl CL: Evolutionary diversification of fungal endophytes of tall fescue grass by hybridization with *Epichloe* species. *Proceedings of the National Academy of Sciences of the United States of America* 1994, **91**(7):2542-2546.
29. Gonzalez-Bernaldez F, Borrill M, Lindner R: Variability of hexaploid *Festuca arundinacea* 1. Principal components analysis of correlation matrix. *Boletín de la Real Sociedad Espanola de Historia Natural Seccion Biologica* 1969, **67**:257-263.
30. Borrill M, Tyler BF, Lloyd-Jones M: Studies in *Festuca* 1. A chromosome atlas of Bovinae and Scariosae. *Cytologia* 1971, **36**:1-14.
31. Jernstedt JA, Bouton JH: Anatomy, morphology, and growth of tall fescue rhizomes. *Crop Science* 1985, **25**(3):539-542.
32. Anonymous Torpedo Tall Fescue. *New Zealand Plant Variety Rights* 1994, Grant number FES007.
33. Stewart AV: World First - Tall fescue with rhizomes. *New Zealand Turf Management Journal* 1995, **9**:32.
34. Stewart AV: The development of a rhizomatous tall fescue (*Festuca arundinacea*) cultivar. 8th International Turfgrass Research Conference: 1997 Sydney, Australia 1997, 136-138.
35. Charrier S, Stewart AV: Breeding of rhizomatous turf tall fescue. 13th Australasian Plant Breeding Conference: 2006 Christchurch, New Zealand 2006, 383-387.
36. de Bruijn J: Tall fescue variety having rhizomes. *Barenbrug USA, Inc (Tanget, OR) United States* 2004, Patent number 6677507.
37. Ghesquiere M, Jadas-Hecart J: Les fe'tuques ou le genre *Festuca*. In *Ressources gé'ne'tiques des plantes fourrage' res et d' gazon*. Edited by: Prosperi J-Mea. St-Just-La-Pendue, France: BRG; 1995.
38. Hunt KL, Slepser DA: Fertility of hybrids between two geographic races of tall fescue. *Crop Science* 1981, **21**(3):400-404.
39. Malik CP, Thomas PT: Chromosomal polymorphism in *Festuca arundinacea*. *Chromosoma* 1966, **18**(1):1-18.
40. Lewis EJ: Hybrids between geographical races of *Festuca arundinacea* Schreb. *Reports of the Welsh Plant Breeding Station* 1963, 26-27.
41. Jadas-Hecart J, Gillet M: Problems posed by sterile hybrids between two types of tall fescues European and Mediterranean. *Meeting of the Fodder Crops Section of Eucarpia 1973* Wageningen, the Netherlands 1973.
42. Drummond JD: The effect of hybridisation on seed vigour of Continental and Mediterranean tall fescue (*Festuca arundinacea* Schreb.) crosses. *Dissertation Thesis* Lincoln University, New Zealand 2006.
43. Jauhar PP: Recent cytogenetics of the *Festuca-Lolium* complex. In *Chromosome Engineering in Plants: Genetics, Breeding, Evolution*. Edited by: Tsuchiya T, Gupta PK. Amsterdam, Netherlands: Elsevier Science Publishers; 1991:2B:325-362.
44. Jauhar PP: Genetic regulation of diploid-like chromosome pairing in the hexaploid species, *Festuca arundinacea* Schreb. and *F. rubra* L (Gramineae). *Chromosoma* 1975, **52**(4):363-382.
45. Jauhar PP: Genetic control of diploid-like meiosis in hexaploid tall fescue. *Nature* 1975, **254**(5501):595-597.
46. Berg CC, Webster GT, Jauhar PP: Cytogenetics and genetics. In *Tall Fescue*. Edited by: Buckner RC, Bush LP. Madison, Wisconsin: American Society of Agronomy; 1979:93-109.
47. Eizenga GC, Kasperbauer MJ: Chromosome pairing in tall fescue haploids derived by anther-panicle culture. *Journal of Heredity* 1985, **76**(2):99-102.
48. Soltis PS, Soltis DE: The role of genetic and genomic attributes in the success of polyploids. *Proceedings of the National Academy of Sciences of the United States of America* 2000, **97**(13):7051-7057.
49. Slepser DA: Breeding Tall Fescue. In *Plant Breeding Reviews*. Edited by: Janick J. Westport: AVI Publishing Co; 1985:3:313-342.
50. Sang T: Utility of low-copy nuclear gene sequences in plant phylogenetics. *Critical Reviews in Biochemistry and Molecular Biology* 2002, **37**(3):121-147.
51. Fortune PM, Schierenbeck KA, Ainouche AK, Jacquemin J, Wendel JF, Ainouche ML: Evolutionary dynamics of *Waxy* and the origin of hexaploid *Spartina* species (Poaceae). *Molecular Phylogenetics and Evolution* 2007, **43**(3):1040-1055.
52. Huang S, Sirikhachornkit A, Su X, Faris J, Gill B, Haselkorn R, Gornicki P: Genes encoding plastid acetyl-CoA carboxylase and 3-phosphoglycerate kinase of the *Triticum/Aegilops* complex and the evolutionary history of

- polyploid wheat. *Proceedings of the National Academy of Sciences of the United States of America* 2002, **99**(12):8133-8138.
53. Vilatersana R, Brysting AK, Brochmann C: **Molecular evidence for hybrid origins of the invasive polyploids *Carthamus creticus* and *C. turkestanicus* (Cardueae, Asteraceae).** *Molecular Phylogenetics and Evolution* 2007, **44**(2):610-621.
 54. Rousseau-Gueutin M, Gaston A, Ainouche A, Ainouche ML, Olbricht K, Staudt G, Richard L, Denoyes-Rothan B: **Tracking the evolutionary history of polyploidy in *Fragaria* L. (strawberry): New insights from phylogenetic analyses of low-copy nuclear genes.** *Molecular Phylogenetics and Evolution* 2009, **51**(3):515-530.
 55. Small RL, Ryburn JA, Cronn RC, Seelanan T, Wendel JF: **The tortoise and the hare: choosing between noncoding plastome and nuclear *Adh* sequences for phylogeny reconstruction in a recently diverged plant group.** *American Journal of Botany* 1998, **85**(9):1301-1315.
 56. Gaut BS, Morton BR, McCaig BC, Clegg MT: **Substitution rate comparisons between grasses and palms: synonymous rate differences at the nuclear gene *Adh* parallel rate differences at the plastid gene *rbcl*.** *Proceedings of the National Academy of Sciences of the United States of America* 1996, **93**(19):10274-10279.
 57. Small RL, Cronn RC, Wendel JF: **Use of nuclear genes for phylogeny reconstruction in plants.** *Australian Systematic Botany* 2004, **17**(2):145-170.
 58. Gornicki P, Faris J, King I, Podkowinski J, Gill B, Haselkorn R: **Plastid-localized acetyl-CoA carboxylase of bread wheat is encoded by a single gene on each of the three ancestral chromosome sets.** *Proceedings of the National Academy of Sciences of the United States of America* 1997, **94**(25):14179-14184.
 59. Huang S, Sirikhachornkit A, Faris JD, Su X, Gill BS, Haselkorn R, Gornicki P: **Phylogenetic analysis of the acetyl-CoA carboxylase and 3-phosphoglycerate kinase loci in wheat and other grasses.** *Plant Molecular Biology* 2002, **48**(5):805-820.
 60. Zhang C, Fan X, Yu H-Q, Zhang H-Q, Wang X-L, Zhou Y-H: **Phylogenetic analysis of questionable tetraploid species in *Roegneria* and *Pseudoroegneria* (Poaceae: Triticeae) inferred from a gene encoding plastid acetyl-CoA carboxylase.** *Biochemical Systematics and Ecology* 2009, **37**(4):412-420.
 61. Fan X, Sha L-N, Yang R-W, Zhang H-Q, Kang H-Y, Ding C-B, Zhang L, Zheng Y-L, Zhou Y-H: **Phylogeny and evolutionary history of *Leymus* (Triticeae; Poaceae) based on a single-copy nuclear gene encoding plastid acetyl-CoA carboxylase.** *BMC Evolutionary Biology* 2009, **9**(1):247.
 62. Jensen CS, Salchert K, Nielsen KK: **A Terminal Flower1-Like Gene from Perennial Ryegrass Involved in Floral Transition and Axillary Meristem Identity.** *Plant Physiol* 2001, **125**(3):1517-1528.
 63. Cogan N, Ponting R, Vecchies A, Drayton M, George J, Dracatos P, Dobrowolski M, Sawbridge T, Smith K, Spangenberg G, et al: **Gene-associated single nucleotide polymorphism discovery in perennial ryegrass (*Lolium perenne* L.).** *Molecular Genetics and Genomics* 2006, **276**(2):101-112.
 64. Jones ES, Mahoney NL, Hayward MD, Armstead AP, Jones JG, Humphreys MO, King IP, Kishida T, Yamada T, Balfourier F, et al: **An enhanced molecular marker based genetic map of perennial ryegrass (*Lolium perenne*) reveals comparative relationships with other Poaceae genomes.** *Genome* 2002, **45**(2):282-295.
 65. Sim S, Chang T, Curley J, Warnke SE, Barker RE, Jung G: **Chromosomal rearrangements differentiating the ryegrass genome from the Triticeae, oat, and rice genomes using common heterologous RFLP probes.** *TAG Theoretical and Applied Genetics* 2005, **110**(6):1011-1019.
 66. Alm V, Fang C, Busso CS, Devos KM, Vollan K, Grieg Z, Rognli OA: **A linkage map of meadow fescue (*Festuca pratensis* Huds.) and comparative mapping with other Poaceae species.** *TAG Theoretical and Applied Genetics* 2003, **108**(1):25-40.
 67. Hollingsworth PM, Forrest LL, Spouge JL, Hajibabaei M, Ratnasingham S, van der Bank M, Chase MW, Cowan RS, Erickson DL, Fazekas AJ, et al: **A DNA barcode for land plants.** *Proceedings of the National Academy of Sciences* 2009, **106**(31):12794-12797.
 68. Altschul SF, Gish W, Miller W, Myers EW, Lipman DJ: **Basic local alignment search tool.** *Journal of Molecular Biology* 1990, **215**(3):403-410.
 69. Initiative TIB: **Genome sequencing and analysis of the model grass *Brachypodium distachyon*.** *Nature* 2010, **463**(7282):763-768.
 70. Bennett MD, Leitch IJ: **Plant DNA C-values database (release 4.0, Oct. 2005).** 2005 [http://www.kew.org/cvalues/].
 71. Ceccarelli M, Falistocco E, Cionini PG: **Variation of genome size and organization within hexaploid *Festuca arundinacea*.** *TAG Theoretical and Applied Genetics* 1992, **83**(3):273-278.
 72. Hsiao C, Jacobs SWL, Chatterton NJ, Asay KH: **A molecular phylogeny of the grass family (Poaceae) based on the sequences of nuclear ribosomal DNA (ITS).** *Australian Systematic Botany* 1998, **11**(6):667-688.
 73. Tamura K, Dudley J, Nei M, Kumar S: **MEGA4: Molecular Evolutionary Genetics Analysis (MEGA) Software Version 4.0.** *Mol Biol Evol* 2007, **24**(8):1596-1599.
 74. Rozas J, Sanchez-DelBarrio JC, Messeguer X, Rozas R: **DnaSP, DNA polymorphism analyses by the coalescent and other methods.** *Bioinformatics* 2003, **19**(18):2496-2497.
 75. Young N, Healy J: **GapCoder automates the use of indel characters in phylogenetic analysis.** *BMC Bioinformatics* 2003, **4**(1):6.
 76. Swofford DL: **PAUP*. Phylogenetic Analysis Using Parsimony (*and Other Methods).** Version 4: Sinauer Associates, Sunderland, Massachusetts 2003.
 77. Felsenstein J: **Confidence limits on phylogenies: an approach using the bootstrap.** *Evolution* 1985, **39**:783-791.
 78. Farris JS, Källersjö M, Kluge AG, Bult C: **Testing Significance Of Incongruence.** *Cladistics* 1994, **10**(3):315-319.
 79. Schardl CL, Craven KD, Schweri KK, Hollin W, Clement SL, Schmid J, West CP, Phillips TD: **Endophytes of the tall fescue ploidy series in Europe, North Africa and the Mediterranean.** *6th International Symposium on Fungal Endophytes of Grasses: 2007* Dunedin, New Zealand 2007, **456**.
 80. Jenkins G, Chatterjee BN: **Chromosome structure and pairing preferences in autotetraploid rye (*Secale cereale*).** *Genome* 1994, **37**(5):784-793.
 81. Le Comber SC, Ainouche ML, Kovarik A, Leitch AR: **Making a functional diploid: from polysomic to disomic inheritance.** *New Phytologist* 2010, **186**(1):113-122.
 82. Kovarik A, Matyasek R, Lim KY, Skalicka K, Koukalova B, Knapp S, Chase M, Leitch AR: **Concerted evolution of 18-5.8-26S rDNA repeats in *Nicotiana allotetraploids*.** *Biological Journal of the Linnean Society* 2004, **82**(4):615-625.
 83. Franzke A, Mummenhoff K: **Recent hybrid speciation in *Cardamine* (Brassicaceae) - conversion of nuclear ribosomal ITS sequences in *stata nascendi*.** *TAG Theoretical and Applied Genetics* 1999, **98**(5):831-834.
 84. Rauscher JT, Doyle JJ, Brown AHD: **Internal transcribed spacer repeat-specific primers and the analysis of hybridization in the *Glycine tomentella* (Leguminosae) polyploid complex.** *Molecular Ecology* 2002, **11**(12):2691-2702.
 85. Wendel JF, Schnabel A, Seelanan T: **Bidirectional interlocus concerted evolution following allopolyploid speciation in cotton (*Gossypium*).** *Proceedings of the National Academy of Sciences of the United States of America* 1995, **92**(1):280-284.
 86. Bowman JG, Thomas H: **Studies in *Festuca*. 8. Cytological relationships between *F. glaucescens* (2n = 28), *F. mairei* (2n = 28) and *F. scariosa* (2n = 14).** *Zeitschrift für Pflanzenzüchtung* 1976, **76**(3):250-257.
 87. Clarke J, Chandrasekharan P, Thomas H: **Studies in *Festuca*. 9. Cytological studies of *Festuca pratensis* var. *apennina* (De Not) Hack. (2n = 28).** *Zeitschrift für Pflanzenzüchtung* 1976, **77**(3):205-214.
 88. Fujiwara S, Nakagawa M, Kamada H, Coupland G, Mizoguchi T: **Circadian clock components in Arabidopsis I. The terminal flower 1 enhances the early flowering phenotype of a mutant, *lhy cca1*.** *Plant Biotechnology* 2005, **22**(4):311-317.
 89. Szankowski I, Waidmann S, Omar A, Flachowsky H, Hattasch C, Hanke M: **RNAi-silencing of MdTFL1 induces early flowering in apple.** *Acta Horticulturae* 2009, **839**:633-636.
 90. Hou C-J, Yang C-H: **Functional Analysis of FT and TFL1 Orthologs from Orchid (*Oncidium Gower Ramsey*) that Regulate the Vegetative to Reproductive Transition.** *Plant Cell Physiol* 2009, **50**(8):1544-1557.
 91. Foucher F, Morin J, Courtiade J, Cadioux S, Ellis N, Banfield MJ, Rameau C: **DETERMINATE and LATE FLOWERING Are Two TERMINAL FLOWER1/CENTRORADIALIS Homologs That Control Two Distinct Phases of Flowering Initiation and Development in Pea.** *Plant Cell* 2003, **15**(11):2742-2754.
 92. Hand M, Ponting R, Drayton M, Lawless K, Cogan N, Charles Brummer E, Sawbridge T, Spangenberg G, Smith K, Forster J: **Identification of homologous, homoeologous and paralogous sequence variants in an outbreeding allopolyploid species based on comparison with progenitor taxa.** *Molecular Genetics and Genomics* 2008, **280**(4):293-304.

93. Blake NK, Sherman JD, Dvořák J, Talbert LE: **Genome-specific primer sets for starch biosynthesis genes in wheat.** *TAG Theoretical and Applied Genetics* 2004, **109**(6):1295-1302.
94. Hilu KW, Alice LA, Liang H: **Phylogeny of Poaceae inferred from *matK* sequence.** *Annals of the Missouri Botanical Garden* 1999, **86**(4):835-851.
95. Johnson L, Soltis D: **Phylogenetic inference in Saxifragaceae sensu stricto and *Gilia* (Polemoniaceae) using *matK* sequences.** *Annals of the Missouri Botanical Garden* 1995, **82**:149-175.

doi:10.1186/1471-2148-10-303

Cite this article as: Hand *et al.*: Evolutionary history of tall fescue morphotypes inferred from molecular phylogenetics of the *Lolium-Festuca* species complex. *BMC Evolutionary Biology* 2010 **10**:303.

**Submit your next manuscript to BioMed Central
and take full advantage of:**

- Convenient online submission
- Thorough peer review
- No space constraints or color figure charges
- Immediate publication on acceptance
- Inclusion in PubMed, CAS, Scopus and Google Scholar
- Research which is freely available for redistribution

Submit your manuscript at
www.biomedcentral.com/submit

