

ORIGINAL RESEARCH

Open Access



The prognostic significance of [¹⁸F]FDG PET/CT in multiple myeloma according to novel interpretation criteria (IMPeTUs)

Christos Sachpekidis^{1*} , Maximilian Merz^{2,3}, Marc-Steffen Raab^{3,4}, Uta Bertsch³, Vivienn Weru⁵, Annette Kopp-Schneider⁵, Anna Jauch⁶, Hartmut Goldschmidt³ and Antonia Dimitrakopoulou-Strauss¹

Abstract

Purpose: [¹⁸F]FDG PET/CT is the elective imaging modality for treatment monitoring in multiple myeloma (MM). However, MM is a heterogeneous disease from an imaging point of view, raising challenges in interpretation of PET/CT. We herein investigated the prognostic role of the novel Italian Myeloma criteria for PET Use (IMPeTUs) in MM patients undergoing high-dose chemotherapy (HDT) followed by autologous stem cell transplantation (ASCT).

Methods: Forty-seven patients with newly diagnosed MM underwent [¹⁸F]FDG PET/CT before commencement of treatment (baseline PET/CT). Thirty-four of them (72.3%) were also examined after completion of ASCT (follow-up PET/CT). PET/CT analysis was based on the IMPeTUs criteria, which take into consideration—among others—the metabolic state of the bone marrow based on the 5-point Deauville score (DS), the number and metabolic state of focal [¹⁸F]FDG-avid lesions, as well as the presence of paramedullary disease (PMD) and extramedullary disease (EMD). We analyzed whether parameters from IMPeTUs correlate with clinically relevant parameters and patients' outcome, as assessed by progression-free survival (PFS).

Results: Median follow-up from baseline and follow-up PET/CT were 85.1 months and 76.7 months, respectively. The number of focal, [¹⁸F]FDG-avid lesions significantly correlated with the bone marrow infiltration rate and the R-ISS stage, while the presence of PMD was associated with LDH. After univariate survival analysis, the number of focal, [¹⁸F]FDG-avid lesions both before and after therapy as well as the presence of PMD and EMD before therapy adversely affected PFS. Multivariate survival analysis for baseline parameters confirmed that the number of focal, [¹⁸F]FDG-avid lesions and the presence of EMD are associated with adverse prognosis, irrespective of the ISS stage and/or the presence of high-risk cytogenetic abnormalities. The 5-point DS of [¹⁸F]FDG uptake in reference bone marrow and focal lesions showed a significant decrease as response to treatment, but it did not affect PFS.

Conclusion: Several parameters utilized in IMPeTUs predict PFS in MM patients, suggesting the potentially significant role of the new criteria in patient stratification and response assessment. Additional studies are warranted for the further evaluation of IMPeTUs in the direction of establishment of robust cut-off values with a prognostic significance in the disease.

Keywords: Multiple myeloma, [¹⁸F]FDG PET/CT, Italian Myeloma criteria for PET Use (IMPeTUs), Interpretation criteria

Introduction

[¹⁸F]FDG PET/CT is considered a valuable tool in the work-up and management of patients with multiple myeloma (MM), due to its ability in detecting both medullary and extramedullary lesions with a high sensitivity

*Correspondence: c.sachpekidis@dkfz-heidelberg.de; christos_saxpe@yahoo.

gr

¹ Clinical Cooperation Unit Nuclear Medicine, German Cancer Research Center (DKFZ), Im Neuenheimer Feld 280, 69210 Heidelberg, Germany
Full list of author information is available at the end of the article

and specificity [1–6]. The major strength of the modality is the reliable differentiation between metabolically active and inactive myeloma lesions, rendering it the gold standard for treatment monitoring and response evaluation [3, 4].

On the other hands, several sources of false-positive and false-negative results in PET imaging have been recognized [1, 5, 7]. Moreover, in MM—more than in other diseases—issues on the evaluation of [¹⁸F]FDG PET/CT scans exist: the different patterns of bone marrow involvement and the non-negligible incidence of concomitant, myeloma-related events such as extramedullary (EMD) and paramedullary disease (PMD) as well as pathological fractures complicate PET/CT image analyses. Additionally, the lower proliferation rate of MM cells leads to a lack of established criteria for PET/CT evaluation and, subsequently, to poor inter-observer reproducibility in interpreting scan results [8–10].

Recently, in an attempt to address the issue of standardization of [¹⁸F]FDG PET/CT evaluation in MM, a group of Italian experts defined new visual descriptive criteria, the Italian Myeloma criteria for PET Use (IMPeTUs), which take into consideration several parameters of significance in MM (10). Although the initial experience with the IMPeTUs criteria has been promising [11–13], their application as interpretation tool of PET/CT scans is still not broad.

In the current study, we investigate the prognostic significance of the IMPeTUs criteria in MM patients undergoing high-dose chemotherapy (HDT) followed by autologous stem cell transplantation (ASCT).

Materials and methods

Patients

Forty-seven consecutive patients (31 male, 16 female; median age 59.9 years) with newly diagnosed, symptomatic MM based on the criteria established by the International Myeloma Working Group (2003) were included in the study [14]. All patients underwent bortezomib-based induction therapies, followed by HDT and ASCT. Twenty-two patients were enrolled in the prospective GMMG MM5 phase III trial that compared two different bortezomib-based induction therapies, followed by ASCT and lenalidomide maintenance therapy for two years or until complete response [15]. Twenty-six patients were treated outside the MM5 trial with comparable treatment regimens and ASCT. This patient cohort has been formerly studied by our group in a different analysis focusing on dynamic [¹⁸F]FDG PET/CT [16]. In the present study, the patients underwent a longer follow-up period, while the evaluation was based on the application of the IMPeTUs criteria on static whole-body PET/CT images. All patients gave written informed

consent after the study was fully explained to them. The study was conducted in accordance with the declaration of Helsinki, with institutional approval by the ethical committee of the University of Heidelberg and the Federal Agency of Radiation Protection in Germany ("Bundesamt für Strahlenschutz").

PET/CT data acquisition

All patients ($n=47$) underwent whole-body [¹⁸F]FDG PET/CT at diagnosis before commencement of treatment (baseline PET/CT). Moreover, 34/47 patients (72.3%) were examined with another PET/CT scan after completion of ASCT and before maintenance therapy (follow-up PET/CT). Thirteen patients of the initial cohort were not included in the second (follow-up) PET/CT analysis due to different reasons (e.g., performance of the second PET/CT already after initiation of maintenance treatment, refusal of patients to undergo another PET/CT scan, or incapacity to perform the second PET/CT at the defined time-point due to practical reasons). Patients were scanned between June 2011 and April 2015. Whole-body PET/CT imaging from the head to the feet was performed 60 min post-injection (p.i.) of [¹⁸F]FDG. A dedicated PET/CT system (Biograph mCT, S128, Siemens Co., Erlangen, Germany) with an axial field of view of 21.6 cm with TruePoint and TrueV, operated in a three-dimensional mode, was used. A low-dose attenuation CT (120 kV, 30 mA) was used for attenuation correction of the PET data and for image fusion. All PET images were attenuation-corrected, and an image matrix of 400 × 400 pixels was used for iterative image reconstruction. Iterative images reconstruction was based on the ordered subset expectation maximization (OSEM) algorithm with two iterations and 21 subsets as well as time of flight (TOF).

PET/CT data analysis

[¹⁸F]FDG PET/CT images were independently analyzed on an Aycan workstation by two nuclear medicine physicians (CS, ADS). Any inter-reader disagreements were resolved by consensus. Image interpretation was based on the IMPeTUs criteria [10], which take into consideration the following parameters:

- Metabolic state of the bone marrow calculated in the lower lumbar spine, if without focal tracer enhancement. This is based on the 5-point Deauville score (DS): score 1, no uptake at all; score 2, ≤ mediastinal blood pool uptake; score 3, > mediastinal blood pool uptake, ≤ liver uptake; score 4, > liver uptake + 10%; score 5, ≫ liver uptake (twice).

- Number of focal, [¹⁸F]FDG-avid medullary lesions, consistent with MM (Fx): F1, no lesions; F2, 1–3 lesions; F3, 4–10 lesions; F4, > 10 lesions.
- Site of focal, [¹⁸F]FDG-avid medullary lesions, consistent with MM: skull, spine, other.
- Degree of [¹⁸F]FDG uptake of the hottest MM lesion, based on DS. In baseline imaging, the focal lesion with the highest metabolic activity was evaluated. In follow-up PET/CT, two approaches were applied: (1) The DS evaluation was performed in the clearly delineated, hypermetabolic focal lesion with the highest uptake in follow-up PET/CT (if present), regardless of the distribution of the hottest lesions in baseline imaging. (2) The DS evaluation was performed in the anatomic area, in which the hottest lesion was detected in baseline PET/CT, irrespective of the presence or absence of a clearly delineated, [¹⁸F]FDG avid lesion in this localization at follow-up.
- Number of lytic lesions in CT (Lx): L1, no lesions; L2, 1–3 lesions; L3, 4–10 lesions; L4, > 10 lesions.
- The presence of at least one fracture in CT.
- The presence of PMD, defined as a bone lesion extruding through cortical bone and involving surrounding soft tissues.
- The presence of EMD, defined as a myeloma manifestation into soft tissues, with no relationship to the bone.

Semi-quantitative evaluation was based on volumes of interest (VOIs) and on subsequent calculation of standardized uptake value (SUV). VOIs used for SUV calculations of the bone marrow (lower lumbar spine) and the hottest MM lesions were drawn with an isocontour mode [17]. The respective SUV calculations for the reference organs (liver, mediastinum) were performed as suggested by the respective literature [10].

Bone marrow plasma cell infiltration, clinical parameters, and fluorescence in situ hybridization

Bone marrow biopsies or aspirates from the iliac crest were performed within four weeks around the baseline [¹⁸F]FDG PET/CT examination and prior to the commencement of treatment in all patients. Percentage of bone marrow infiltration by malignant plasma cells was assessed via light microscope from Giemsa-stained bone marrow smears [18]. The infiltration rate represents the number of plasma cell in comparison to all nucleated, hematopoietic cells in the bone marrow. Fluorescence in situ hybridization (FISH) was performed before start of therapy, as described previously [19], on CD138-purified plasma cells using the following probes: 1q21, 5p15, 5q35, 8p21, 9q34, 11q22.3, 13q14, 15q22, 17p13, and 19q13. We also investigated immunoglobulin H (IgH)

translocations using an IgH break-apart probe as well as probes for t(11;14), t(4;14), and t(14;16). Patients were staged according to the MM International Staging System (ISS) [20]. Moreover, the Revised International Staging System (R-ISS) score was defined for the definition of high-risk disease [21].

Statistical analysis

Depending on the variables tested, the following approaches were applied for correlation and association analysis: for the correlation between continuous variables Spearman rank correlation coefficient, between nominal and ordinal variables chi-square tests of association, between continuous and nominal variables Kruskal–Wallis test, and between continuous and ordinal variables Jonckheere–Terpstra test. Concerning association between nominal variables, chi-square tests of association were computed: For nominal variables with only two levels each, phi coefficient was calculated, while for those with more than two levels, Cramer's *v* was computed. Comparisons between baseline and follow-up parameters were performed with use of paired t-test for continuous variables, McNemar test for nominal variables, and Wilcoxon signed-rank test for the “score” variables (DS of the bone marrow, DS of the hottest lesion, number of focal lesions-Fx, number of lytic lesions-Lx). Progression-free survival (PFS) was measured from the date of baseline (*n* = 47 patients) and follow-up (*n* = 34 patients) PET/CT, respectively, until disease progression or death from any cause. Kaplan–Meier estimates were generated and median PFS estimated. Median follow-up time was determined by inverse Kaplan–Meier estimation. For univariate comparison of PFS log-rank test was used. Univariable Cox proportional hazards regression analysis was applied for the continuous variables. Multivariate Cox proportional hazards regression analysis was also applied. Statistical analysis was performed using R version 3.4.3 (The R Foundation for Statistical Computing 2017) and R packages survival, survminer and prodlim. The results were considered significant for *p* value less than 0.05 (*p* < 0.05). The reported analyses are exploratory, and no correction for multiplicity of testing was made.

Results

Patient characteristics

According to ISS, 26 patients were classified in stage I (61.9%), 12 patients in stage II (28.6%), and four patients in stage III (9.5%). The median bone marrow plasma cell infiltration rate before commencement of treatment was 32% (range 1–92%). Cytogenetic data were available in 40 patients of the studied cohort (80%), with high-risk abnormalities being detected in eight of them (20%). A

combination of the ISS and cytogenetic data was available in 36 patients, leading to the following classification according to R-ISS: 14 patients in group R-ISS-I (38.9%), 20 patients in group R-ISS-II (55.5%), and two patients in group R-ISS-III (5.6%). The characteristics of the studied patients at baseline are presented in Table 1.

[¹⁸F]FDG PET /CT findings

Baseline PET/CT

The application of IMPeTUs revealed the following results: the median five-point DS of diffuse bone marrow uptake was 3 (range DS = 2–5). Eleven patients (23%) had no visually detectable focal, medullary, hypermetabolic lesions (F1 score), while 36 of them (77%) had at least one focal hypermetabolic lesion (median F score = 2; range F score = 1–4). In the 36 patients with focal lesions, the median five-point DS of the hottest lesion was 5 (range DS = 3–5). PMD and EMD were present in 23/47 (49%) and 4/47 patients (9%), respectively. Regarding EMD, its site was nodal in two patients and extranodal (intramuscular) in the other two. Eight patients (17%) had no osteolysis (L1 score), while 39 of them (83%) showed at least one lytic lesion (median L score = 3; range L score = 1–4). Fractures were detected in 22 patients (47%).

With concern to inter-reader agreement in application of IMPeTUs, there were three cases (6%) of discordant findings regarding the number of [¹⁸F]FDG-avid medullary lesions (Fx) in baseline PET/CT. Respectively,

in four patients (9%), there was disagreement regarding the number of lytic lesions in CT (Lx). On the other hands, no disagreement occurred with regard to the DS-based classification of patients in groups according to the degree of [¹⁸F]FDG uptake in the bone marrow and the hottest focal lesions. Further, there were no discordant findings regarding the presence of fractures, PMD, or EMD in the studied patients. All cases of inter-reader disagreement were resolved by consensus.

Follow-up PET/CT

After ASCT, a significant decrease in diffuse bone marrow uptake was observed compared to baseline ($p < 0.001$). In particular, at follow-up 32/34 (94%), patients had DS 2 or 3, and only two patients DS 4 or 5 (6%) (median DS = 3; range DS = 2–4). Similarly, at follow-up the number of focal, medullary, hypermetabolic lesions (Fx) decreased significantly from baseline ($p < 0.001$): 21/34 patients (62%) showed no lesions (F1 score), while 13/34 patients (38%) showed at least one lesion (median F score = 1; range F score = 1–4) (Fig. 1). With regard to the 13 patients with clearly delineated, hypermetabolic focal lesions at follow-up, the median DS of the hottest lesions was 4 (range DS = 2–5), not exhibiting a significant difference with baseline ($p = 0.188$); these DS estimations refer to the lesions clearly demonstrated in follow-up PET/CT, irrespective of the distribution of lesions in baseline imaging (Approach 1). On the other hands, according to Approach 2, a significant DS decrease was observed between pre- and post-treatment PET/CT in the anatomic areas, in which the hottest lesions were detected in baseline PET/CT (median DS = 3; range DS = 1–5) ($p < 0.001$). A significant decrease was observed in the incidence of hypermetabolic PMD, with no patient showing such signs in follow-up PET/CT ($p < 0.001$) (Fig. 2). In contrary, the incidence of EMD did not significantly change from baseline imaging ($p = 0.414$) ($n = 4/34$ patients; 12% at follow-up): Although all baseline manifestations of EMD receded after treatment (Fig. 3), three patients demonstrated new signs of nodal EMD and one patient signs of extranodal (pulmonary) EMD at follow-up. Finally, no significant differences in the number of lytic lesions (Lx) were observed ($p = 0.625$) (median L score = 3; range L score = 1–4), while the incidence of fractures significantly increased ($p = 0.02$) ($n = 24/34$ patients, 71%).

Regarding inter-reader agreement, three cases (9%) of discordant findings in estimation of the number of focal hypermetabolic lesions (Fx) and lytic lesions (Lx) were noted in follow-up PET/CT. Similarly to baseline imaging, no disagreement occurred with regard to the DS-based degree of [¹⁸F]FDG uptake in the bone marrow

Table 1 Baseline patient characteristics

Baseline characteristics	n (%) [range]
Median age, years (47 patients)	59.9 [38.4–73.5]
Gender (47 patients)	
Male	31 (66%)
Female	16 (34%)
Median albumin, g/dl (44 patients)	4.2 [0.5–5.0]
Median β 2-microglobulin, mg/l (43 patients)	2.8 [1.1–37.0]
Median LDH, u/l (45 patients)	184.0 [117.0–283.0]
Median bone marrow plasma cell infiltration (45 patients)	32% [1%–92%]
Cytogenetic abnormalities (40 patients)	
High-risk	8 (20.0%)
Standard risk	32 (80.0%)
ISS (42 patients)	
I	26 (61.9%)
II	12 (28.6%)
III	4 (9.5%)
R-ISS (36 patients)	
I	14 (38.9%)
II	20 (55.6%)
III	2 (5.6%)



Fig. 1 A 59-year-old female MM patient undergoing [^{18}F]FDG PET/CT before and after HDT and ASCT. **A** Maximum intensity projection (MIP) PET/CT before therapy revealed an increased, diffuse bone marrow uptake of the tracer in the axial skeleton and the proximal parts of both humeri and femora, as well as several focal bone marrow lesions (arrows). According to IMPeTUs, the patient was classified at baseline as follows: BM4, F3 Sp, ExtraSp (DSS), L2. **B** Follow-up [^{18}F]FDG PET/CT after ASCT demonstrated a complete remission of both diffuse bone marrow uptake as well as focal medullary lesions. [^{18}F]FDG uptake in cervical lymph nodes was attributed to inflammatory reaction after therapy, thus considered benign. The respective results according to IMPeTUs at follow-up were: BM3, F1, L2, Fr

and the hottest focal lesions as well as the presence of fractures, PMD, and EMD.

The PET/CT results after application of IMPeTUs are summarized in Tables 2 and 3. Moreover, the SUV values derived from the bone marrow (lower lumbar spine), the hottest MM lesions, the liver, and the mediastinum are presented in Additional file 1.

Correlation between baseline [^{18}F]FDG PET/CT findings and clinical parameters

Exploratory correlation analysis revealed that the number of focal, [^{18}F]FDG-avid medullary lesions (Fx) correlated with the bone marrow infiltration rate ($p=0.032$) and had an association with R-ISS stage ($p=0.016$). No significant association was observed regarding the

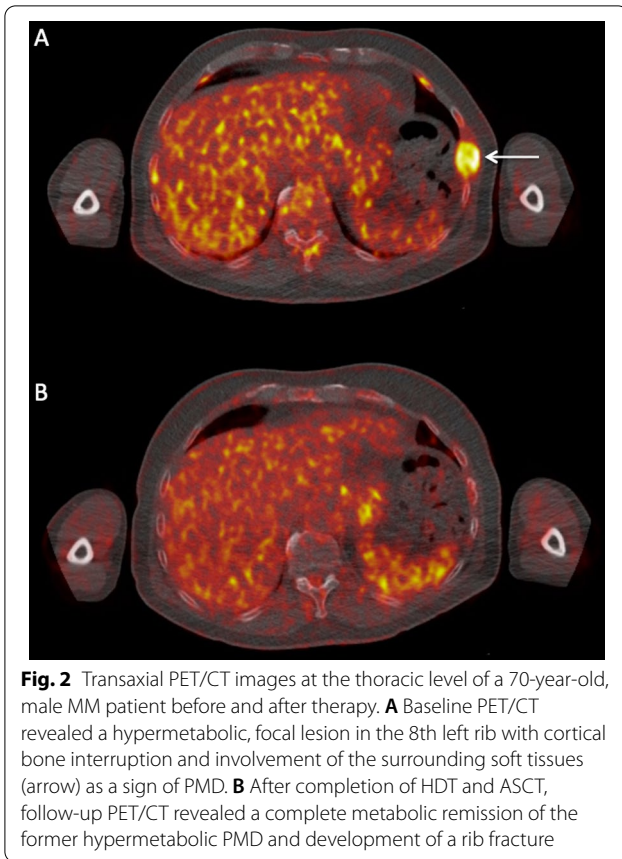


Fig. 2 Transaxial PET/CT images at the thoracic level of a 70-year-old, male MM patient before and after therapy. **A** Baseline PET/CT revealed a hypermetabolic, focal lesion in the 8th left rib with cortical bone interruption and involvement of the surrounding soft tissues (arrow) as a sign of PMD. **B** After completion of HDT and ASCT, follow-up PET/CT revealed a complete metabolic remission of the former hypermetabolic PMD and development of a rib fracture

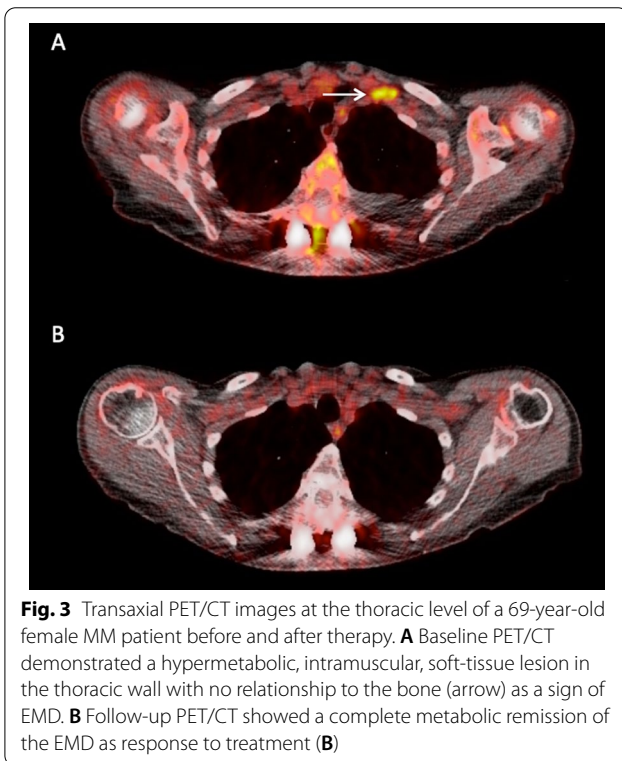


Fig. 3 Transaxial PET/CT images at the thoracic level of a 69-year-old female MM patient before and after therapy. **A** Baseline PET/CT demonstrated a hypermetabolic, intramuscular, soft-tissue lesion in the thoracic wall with no relationship to the bone (arrow) as a sign of EMD. **B** Follow-up PET/CT showed a complete metabolic remission of the EMD as response to treatment (**B**)

Table 2 PET/CT results after application of IMPeTUs

IMPeTUs criteria	Baseline PET/CT (n = 47) Patients (%) [§]	Follow-up PET/CT (n = 34) Patients (%) [§]		
<i>Bone marrow uptake, DS</i>				
1	0	0		
2	7 (15%)	13 (38%)		
3	19 (40%)	19 (56%)		
4	18 (38%)	2 (6%)		
5	3 (6%)	0		
<i>No. of focal, hypermetabolic lesions</i>				
F ₁ (none)	11 (23%)	21 (62%)		
F ₂ (1–3)	15 (32%)	8 (24%)		
F ₃ (4–10)	9 (19%)	3 (9%)		
F ₄ (> 10)	12 (26%)	2 (6%)		
<i>Site of focal lesions*</i>				
Skull	2 (4%)	1 (3%)		
Spine	23 (49%)	3 (9%)		
Other	33 (70%)	12 (35%)		
<i>Uptake of the hottest focal lesion, DS</i>				
			<i>Approach 1</i>	<i>Approach 2</i>
1	0	0	0	2 (8%)
2	0	1 (8%)	1 (8%)	9 (35%)
3	1 (3%)	0	0	5 (19%)
4	14 (39%)	7 (54%)	7 (54%)	7 (27%)
5	21 (58%)	5 (39%)	5 (39%)	3 (12%)
<i>No. of lytic lesions</i>				
L ₁ (none)	8 (17%)	5 (15%)		
L ₂ (1–3)	12 (26%)	9 (27%)		
L ₃ (4–10)	7 (15%)	5 (15%)		
L ₄ (> 10)	20 (43%)	15 (44%)		
<i>Presence of at least one fracture</i>				
No	25 (53%)	10 (29%)		
Yes	22 (47%)	24 (71%)		
<i>Presence of PMD*</i>				
No	24 (51%)	34 (100%)		
Yes	23 (49%)	0		
<i>Presence of EMD*</i>				
No	43 (92%)	30 (88%)		
Yes	4 (9%)	4 (12%)		

* Measurements refer to hypermetabolic lesions

[§] Due to rounding, the % percentage values do not necessarily add to 100%

relationship between bone marrow infiltration rate and the score of focal lesions (F_x) after taking into account the different anatomical locations (site) of the lesions (Additional file 2). Moreover, patients with PMD had significantly higher LDH plasma levels than those without PMD ($p = 0.015$).

Table 3 Descriptive statistics including median values and range of PET/CT variables after application of IMPeTUs at baseline (before treatment) and follow-up (after ASCT and before maintenance) scanning

	Bone marrow uptake, DS	No. of focal, hypermetabolic lesions	Uptake of the hottest focal lesion, DS		No. of lytic lesions
<i>Baseline PET/CT</i>					
Median	3	2	5		3
Range	2–5	1–4	3–5		1–4
<i>Follow-up PET/CT</i>					
Median	3	1	4*	3 [§]	3
Range	2–4	1–4	2–5*	1–5 [§]	1–4
<i>p</i> value	<0.001	<0.001	0.188*	<0.001 [§]	0.625

* Evaluations based on Approach 1

§ Evaluations based on Approach 2

Survival analysis

Baseline PET/CT

Median follow-up [95% CI] from baseline PET/CT was 85.1 months [82.1–97.9 months]. During this follow-up period, 38 patients had shown disease progression and 9 patients had no progression. Thirty-two patients were still alive, while 15 of them had died. Univariate analysis revealed that the following IMPeTUs parameters derived from baseline PET/CT were associated with a worse PFS. In particular, the number of focal hypermetabolic lesions (Fx) adversely affected survival, with an increasing number of lesions conferring worse PFS ($p < 0.001$) (Fig. 4). Further, patients with PMD had a median PFS of 34.5 months [24.8–54.5] compared to a median PFS of 49.3 months [38.2–NA] for patients without PMD ($p = 0.025$) (Fig. 5). EMD-positive patients had a median

PFS of 17.2 months [9.4–NA], while EMD-negative patients had a median PFS of 43.9 months [31.8–61.7] ($p = 0.014$) (Fig. 5). In contrast, the metabolic state of the bone marrow in the lower lumbar spine dichotomized at the median DS value of 3 did not significantly affect survival ($p = 0.47$). Concerning the parameter DS of the hottest MM lesion, the number of patients with $DS \leq 3$ was very small to perform survival analysis based on this cut-off value ($n = 1$ patient); instead, we used DS 4 as cut-off, which did not have, however, an effect on PFS ($p = 0.81$). Finally, neither the number of osteolysis (Lx) ($p = 0.1$) nor the presence of fractures ($p = 0.24$) in CT was associated with a worse PFS (Table 4).

Multivariate Cox regression analysis of baseline parameters accounting for R-ISS stage showed that the

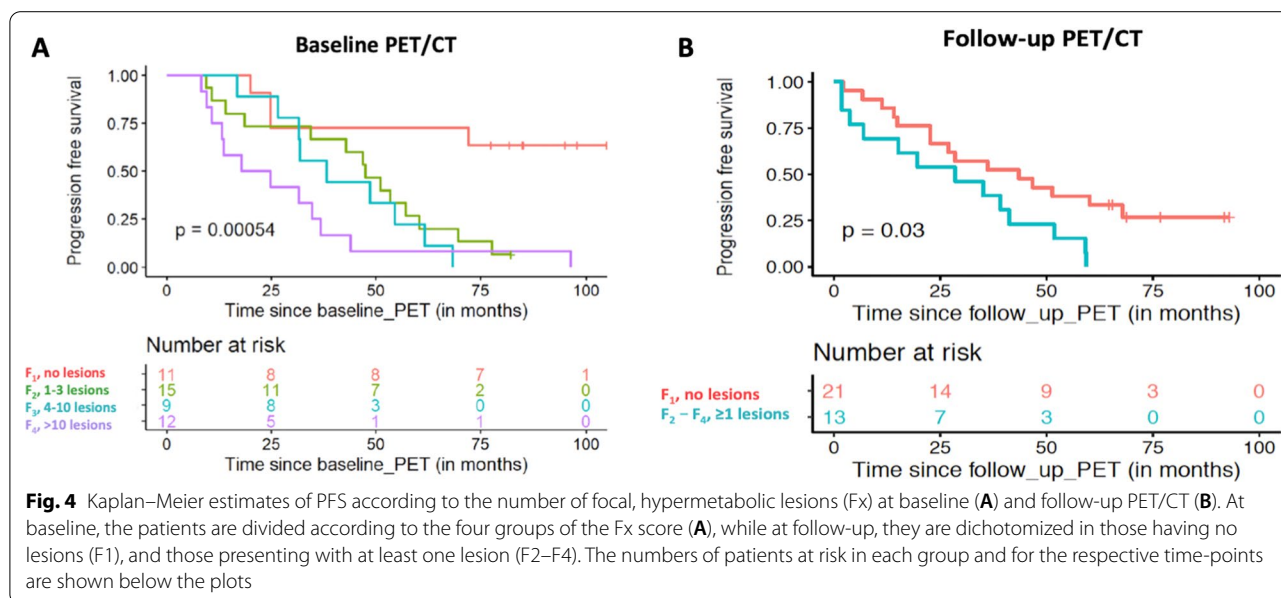
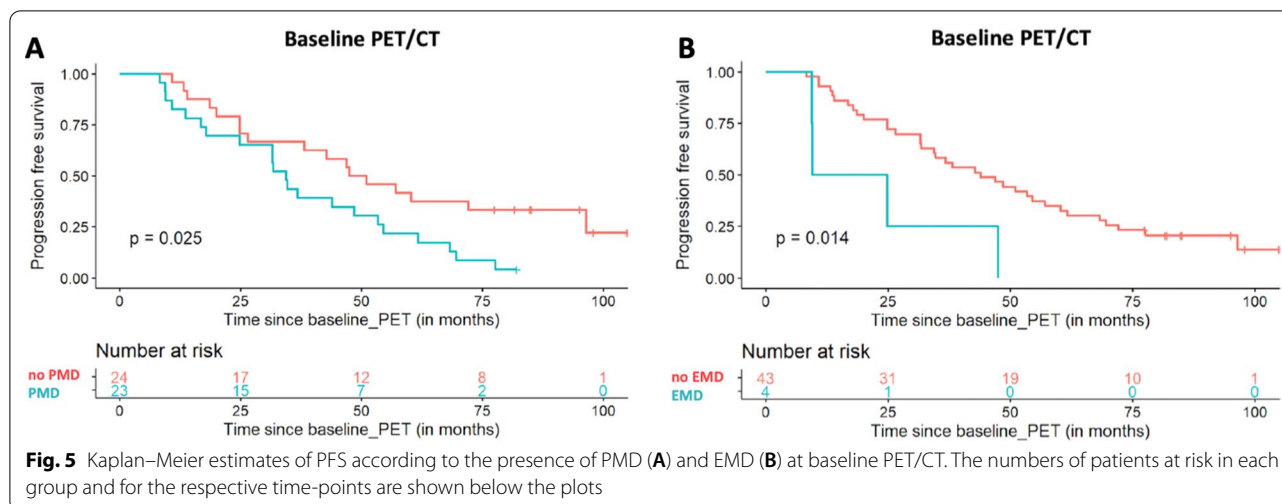


Fig. 4 Kaplan–Meier estimates of PFS according to the number of focal, hypermetabolic lesions (Fx) at baseline (A) and follow-up PET/CT (B). At baseline, the patients are divided according to the four groups of the Fx score (A), while at follow-up, they are dichotomized in those having no lesions (F1), and those presenting with at least one lesion (F2–F4). The numbers of patients at risk in each group and for the respective time-points are shown below the plots



number of focal, [^{18}F]FDG-avid, medullary lesions and the presence of EMD are associated with significantly shorter PFS, irrespective of the ISS stage and/or the presence of high-risk chromosomal abnormalities.

Follow-up PET/CT

Median follow-up [95% CI] from the second PET/CT was 76.7 months [65.4 – 91.7 months]. The only IMPeTUs parameter from follow-up PET/CT conferring a worse survival was the number of focal hypermetabolic lesions dichotomized at F1: patients showing at least one focal, [^{18}F]FDG avid lesion (>F1) had a median PFS of 28.5 months [7.0–NA], compared to a median PFS of 43.5 months [22.6–NA] for patients without any lesions (F1) ($p=0.03$) (Fig. 4). The rest of the parameters, including the metabolic state of the bone marrow dichotomized at the median DS 3 ($p=0.3$), the metabolic state of the hottest lesion dichotomized at the median DS 4 for Approach 1 ($p=0.21$), and at the median DS 3 for Approach 2 ($p=0.52$), the presence of EMD ($p=0.14$), the number of osteolysis (Lx) ($p=0.08$) and the presence of fractures ($p=0.63$), did not significantly affect PFS (Table 4).

Discussion

The recent development of the IMPeTUs criteria aimed to serve the cause of PET/CT analysis in a standardized and simple fashion, based exclusively on visual interpretation of the scans. The preliminary results of the application of these criteria have been promising, yielding a high reproducibility in scan interpretation [10, 11]. In the present study, we investigated the prognostic significance of IMPeTUs in MM patients before and after treatment. The major findings from our analysis are the following: First, upon univariate analysis, the number of focal, medullary,

hypermetabolic lesions on PET/CT (Fx) both before and after therapy, as well as the presence of PMD and EMD, have an adverse prognostic significance in patient survival. Second, multivariate survival analysis for baseline parameters confirms that the number of focal, [^{18}F]FDG-avid, medullary lesions, and the presence of EMD are associated with adverse prognosis, irrespective of the ISS stage and/or the presence of high-risk chromosomal abnormalities. Third, the 5-point DS of [^{18}F]FDG uptake in reference bone marrow and focal lesions significantly decreases as response to treatment, but it does not affect survival.

The number of focal [^{18}F]FDG-avid lesions (Fx) demonstrated a prognostic significance both before and after therapy. Specifically, on baseline PET/CT, a higher Fx score was associated with a shorter PFS. This finding was also confirmed via multivariate analysis of baseline parameters accounting for ISS stage and/or the presence of high-risk cytogenetic abnormalities. Respectively, on follow-up PET/CT, the presence of at least one focal lesion (>F1) conferred a worse PFS compared to the absence of any lesions (F1). These findings highlight the clinical relevance of the cut-off values chosen to classify patients in groups based on the number of focal lesions, and they, moreover, confirm the association between the persistence of PET-positive lesions after treatment and impaired clinical outcome [22–24]. Importantly, the number of focal lesions at baseline also correlated significantly with two other clinically relevant parameters in MM, namely the bone marrow infiltration rate and the R-ISS stage.

Another result of our analysis was the adverse effect on survival of the presence of hypermetabolic, soft-tissue components (EMD, PMD). EMD is a recognized prognostic factor for worse survival in MM [23, 25, 26]

Table 4 Predictors of PFS by univariate analysis based on PET/CT results after application of IMPeTUs

IMPeTUs criteria	PFS	
	Median [95% CI]	
	Baseline PET/CT	Follow-up PET/CT
<i>Bone marrow uptake, DS score</i>		
≤ 3	47.2 [31.8–69.6]	31.8 [22.6–51.8]
> 3	34.7 [17.9–72.1]	41.2 [41.2–NA]
<i>No. of focal, hypermetabolic lesions</i>		
F ₁ (none)	NA [72.1–NA]*	43.5 [22.6–NA]**
F ₂ (1–3)	47.5 [34.5–69.6]*	37.1 [28.5–NA]**
F ₃ (4–10)	38.2 [31.6–NA]*	15.2 [1.8–NA]**
F ₄ (> 10)	21.4 [13.3–NA]*	13.3 [7.0–NA]**
<i>Uptake of the hottest focal lesion, DS</i>		
≤ 3	NA	31.7 [22.6–51.8] [†]
> 3	NA	24.0 [7.0–NA] [†]
<i>No. of lytic lesions</i>		
L ₁ (none)	42.8 [24.8–NA]	NA [36.1–NA]
L ₂ (1–3)	54.1 [36.8–NA]	46.7 [28.4–NA]
L ₃ (4–10)	24.8 [20.1–NA]	11.3 [1.8–NA]
L ₄ (> 10)	39.3 [31.6–61.7]	26.9 [19.6–59.1]
<i>Presence of at least one fracture</i>		
No	47.5 [31.8–72.1]	41.4 [26.9–NA]
Yes	35.7 [24.8–61.1]	28.5 [19.6–59.1]
<i>Presence of PMD</i>		
No	49.3 [38.2–NA] [‡]	35.6 [22.6–51.8]
Yes	34.5 [24.8–54.5] [‡]	NA [°]
<i>Presence of EMD</i>		
No	43.9 [31.8–61.7] [§]	37.6 [22.6–59.3]
Yes	17.2 [9.4–NA] [§]	24.8 [2.2–NA]

NA, not applicable

NA[°], not applicable, since no patient showed PMD on follow-up PET/CT*[‡]*p* < 0.05, after usage of log-rank test for univariate comparison of PFS***p* < 0.05, after usage of log-rank test for univariate comparison of PFS, based on the dichotomization presence (F₁) vs. absence (> F₁) of focal lesions on follow-up PET/CT[†]The herein presented evaluations in follow-up PET/CT were performed based on Approach 2. According to Approach 1, the number of patients with DS ≤ 3 is too small (*n* = 1 patient) to perform survival analysis based on this cut-off value

and the herein presented results confirm this in the pre-treatment setting through both univariate and multivariate survival analysis. Interestingly, however, the presence of EMD in follow-up PET/CT did not confer a worse PFS. A potential explanation for this lies in the assumption that they do not represent true EMD but rather post-therapeutic, hypermetabolic, inflammatory reactions to treatment. This argument is supported, firstly, by the distribution of the PET findings—including an almost symmetric, mediastinal/hilar lymphadenopathy

(*n* = 2 patients), a generalized, bilateral lymphadenopathy involving mediastinal, iliac, and inguinal lymph nodes (*n* = 1 patient), and a lung infiltration pattern similar to pneumonitis (*n* = 1 patient) [27, 28]—and, secondly, by the patients' clinical response after ASCT according to the clinical gold standard (complete response, 2 patients; near-complete response, 1 patient; partial response, 1 patient) [29, 30]. Although not available, a histopathological validation of the imaging findings could definitively rule out false-positive findings. Therefore, in cases of discordancy between imaging and clinical/laboratory findings, especially in the context of measurable residual disease, a histopathological clarification of the equivocal findings is strongly recommended.

On the other hands, the role of PMD in PET/CT has not been investigated as thoroughly as that of EMD. Rasche et al. have shown in a cohort of 404 newly diagnosed MM patients that PMD was present in 36.9% of them, and it, moreover, conferred a shorter PFS [31]. We herein confirm that the presence of hypermetabolic PMD at baseline is not uncommon, affecting 49% of the cohort, it confers an adverse PFS—at least at univariate analysis, and is associated with significantly higher LDH plasma levels, a parameter with major impact on the survival of myeloma patients [32].

An important aspect of IMPeTUs is the introduction of the 5-point DS, originally applied in Hodgkin lymphoma [33, 34], in the assessment of myeloma skeletal involvement. The application of the Deauville criteria before treatment in reference bone marrow and focal myeloma lesions did not reveal a significant effect on PFS. These findings are consistent with the results of a retrospective evaluation of IMPeTUs in 47 MM patients before commencement of treatment, in which the application of the 5-point DS was also not predictive of progression or death. At odds with our findings, however, the authors of that study reported no effect of the number of focal lesions or the presence of soft-tissue components on survival [35].

At follow-up, the DS of reference bone marrow significantly decreased as response to treatment. With respect to focal lesions, two approaches were followed in their assessment: the first approach involved DS estimation of the clearly delineated, focal lesion with the highest uptake in follow-up PET/CT, irrespective of the localization of the hottest lesion in baseline imaging. This approach revealed a non-significant decrease in DS as response to treatment. In the second approach, the DS evaluation in follow-up PET/CT involved the particular anatomic area, in which the hottest lesion was detected in baseline PET/CT, irrespective of the presence or absence of a clearly delineated, [¹⁸F]FDG-avid lesion in this localization after therapy. Based on this method, a significant decrease of

DS was observed after treatment. Similarly, to baseline PET/CT, survival analysis revealed no significant effect of follow-up DS, derived both from reference bone marrow and focal lesions, on PFS.

Recently, the results of a large joint analysis ($n = 228$ patients) involving PET/CT evaluations based on the Deauville criteria were published [13]. Similar to our results, a marked decrease from baseline to follow-up imaging was observed in the incidence of patients with focal lesions as well as in the DS of reference bone marrow. On the other hands, a significant association was reported between post-treatment $DS < 4$ of both reference bone marrow and focal lesions with prolonged survival. These results are seemingly inconsistent with our respective findings. However, the explanation for this discordance may lie in the markedly lower number of patients enrolled in our study. In specific, at follow-up imaging, only 2/34 patients of our cohort had $DS \geq 4$ of the reference bone marrow, compared to 17/195 patients in the aforementioned study. Respectively, at follow-up imaging, only 1/13 patient had $DS < 4$ of focal lesions—compared to 20/62 patients—according to Approach 1, which is also the method applied in the above-mentioned study [13]. Therefore, the extraction of robust conclusions on patient survival based on these DS cut-off values is not yet feasible by our analysis.

We note some limitations in our study. Foremost, this is a retrospective analysis of prospectively acquired data from a relatively small patient cohort, not allowing the drawing of more firm conclusions, particularly with regard to the predictive role of the 5-point DS on patient survival; further studies with larger patient cohorts would be warranted to validate the here presented findings. Further, the vast majority of the PET/CT-positive, myeloma-consistent findings were not histopathologically confirmed, which is usually not done in the clinical setting. However, we are already in the process of evaluating the performance of image-guided biopsies to molecularly characterize PET-positive lesions [36].

Conclusion

In an attempt to generate further knowledge on the issue of standardization of [^{18}F]FDG PET/CT interpretation in MM, we investigated the prognostic significance of the newly introduced, visual IMPeTUs criteria in MM patients undergoing HDT followed by ASCT. Our results showed via univariate analysis that several parameters utilized in IMPeTUs, including the number of focal, [^{18}F]FDG-avid lesions before and after treatment, as well as the presence of PMD and EMD before treatment, significantly affect patient survival. Moreover, multivariate survival analysis for baseline parameters confirmed that the number of focal, [^{18}F]FDG-avid lesions and the presence

of EMD are associated with adverse prognosis, irrespective of the ISS stage and/or the presence of high-risk chromosomal abnormalities. With regard to the 5-point DS of [^{18}F]FDG uptake, originally applied in Hodgkin lymphoma, it showed a significant decrease as response to treatment both in reference bone marrow and focal lesions, but it did not affect patient survival. Although further studies in larger cohorts are necessary for validation, our findings highlight the potentially significant role of the new criteria in myeloma patient stratification and response assessment.

Supplementary Information

The online version contains supplementary material available at <https://doi.org/10.1186/s13550-021-00846-y>.

Additional file 1. Median SUV values (range) derived from the bone marrow, the hottest MM lesions, the liver and the mediastinum at baseline (before treatment) and follow-up (after ASCT and before maintenance) PET/CT.

Additional file 2. Analysis on the relationship between bone marrow plasma cell infiltration percentage and the IMPeTUs parameter number of focal lesions (Fx) after taking into account the different anatomical locations of the lesions.

Acknowledgements

We would like to thank the investigators in the GMMG-MM5 trial. This research was partly supported by the Dietmar Hopp Foundation.

Authors' contributions

CS performed the PET/CT studies and evaluations, analyzed the data, and drafted the manuscript; MM was involved in the management of the patients, analyzed the data, and drafted the manuscript; M-SR was involved in the management of the patients and contributed to data interpretation; UB was involved in the management of the patients and contributed to data interpretation; VW performed the statistical analysis; AK-S performed the statistical analysis; AJ performed the FISH analysis; HGo designed the study, was involved in the management of the patients, analyzed the data, revised the manuscript, and contributed to data interpretation; and AD-S designed the study, performed the PET/CT evaluations, and revised the manuscript. All authors read and approved the final manuscript.

Funding

Open Access funding enabled and organized by Projekt DEAL.

Availability of data and materials

The dataset used and/or analyzed during the current study is available from the corresponding authors on reasonable request.

Declarations

Ethics approval and consent to participate

All procedures performed in studies involving human participants were in accordance with the ethical standards of the institutional (S-076/2010) and/or national research committee and with the 1964 Helsinki declaration and its later amendments or comparable ethical standards. Informed consent was obtained from all individual participants included in the study.

Consent for publication

The given consent included also the consent for publication of anonymized data.

Competing interests

Hartmut Goldschmidt: Grants and/or provision of Investigational Medicinal Product: Amgen, BMS, Celgene, Chugai, Dietmar-Hopp-Foundation, Janssen, John Hopkins University, Sanofi. Research Support (Institutions): Amgen, BMS, Celgene, Chugai, Janssen, Incyte, Molecular Partners, Merck Sharp and Dohme (MSD), Sanofi, Mundipharma, Takeda, Novartis. Advisory Boards (Institutions): Adaptive Biotechnology, Amgen, BMS, Celgene, Janssen, Sanofi, Takeda. Honoraria (Speakers Bureaus): Amgen, ArtTempi, BMS, Celgene, Chugai, Glaxo-SmithKline (GSK), Janssen, Novartis, Omnia Med Deutschland, Sanofi. All other authors declare no conflicts of interest.

Author details

¹Clinical Cooperation Unit Nuclear Medicine, German Cancer Research Center (DKFZ), Im Neuenheimer Feld 280, 69210 Heidelberg, Germany. ²Department of Hematology and Cell Therapy, University of Leipzig, Leipzig, Germany. ³Department of Internal Medicine V, University Hospital Heidelberg and National Center for Tumor Diseases (NCT), Heidelberg, Germany. ⁴Clinical Cooperation Unit Molecular Hematology/Oncology, German Cancer Research Center (DKFZ), Heidelberg, Germany. ⁵Division of Biostatistics, German Cancer Research Center (DKFZ), Heidelberg, Germany. ⁶Institute of Human Genetics, University of Heidelberg, Heidelberg, Germany.

Received: 13 July 2021 Accepted: 23 September 2021
Published online: 09 October 2021

References

- Zamagni E, Cavo M. The role of imaging techniques in the management of multiple myeloma. *Br J Haematol*. 2012;159:499–513.
- Terpos E, Dimopoulos MA, Mouloupoulos LA. The role of imaging in the treatment of patients with multiple myeloma in 2016. *Am Soc Clin Oncol Educ Book*. 2016;35:e407–17. https://doi.org/10.1200/EDBK_159074.
- Cavo M, Terpos E, Nanni C, et al. Role of 18F-FDG PET/CT in the diagnosis and management of multiple myeloma and other plasma cell disorders: a consensus statement by the International Myeloma Working Group. *Lancet Oncol*. 2017;18:e206–17.
- Zamagni E, Tacchetti P, Cavo M. Imaging in multiple myeloma: How? When? *Blood*. 2019;133(7):644–51. <https://doi.org/10.1182/blood-2018-08-825356>.
- Sachpekidis C, Goldschmidt H, Dimitrakopoulou-Strauss A. Positron Emission Tomography (PET) radiopharmaceuticals in multiple myeloma. *Molecules*. 2019;25(1):134. <https://doi.org/10.3390/molecules25010134>.
- Baffour FI, Glazebrook KN, Kumar SK, Broski SM. Role of imaging in multiple myeloma. *Am J Hematol*. 2020;95(8):966–77. <https://doi.org/10.1002/ajh.25846>.
- Rasche L, Angtuaco E, McDonald JE, Buros A, Stein C, Pawlyn C, Thanendrarajan S, Schinke C, Samant R, Yaccoby S, Walker BA, Epstein J, Zangari M, van Rhee F, Meissner T, Goldschmidt H, Hemminki K, Houlston R, Barlogie B, Davies FE, Morgan GJ, Weinhold N. Low expression of hexokinase-2 is associated with false-negative FDG-positron emission tomography in multiple myeloma. *Blood*. 2017;130(1):30–4.
- Kyle RA, Rajkumar SV. Criteria for diagnosis, staging, risk stratification and response assessment of multiple myeloma. *Leukemia*. 2009;23(1):3–9.
- Vij R, Fowler KJ, Shokeen M. New approaches to molecular imaging of multiple myeloma. *J Nucl Med*. 2016;57(1):1–4.
- Nanni C, Zamagni E, Versari A, Chauvie S, Bianchi A, Rensi M, Bellò M, Rambaldi I, Gallamini A, Patriarca F, Gay F, Gamberi B, Cavo M, Fanti S. Image interpretation criteria for FDG PET/CT in multiple myeloma: a new proposal from an Italian expert panel. *IMPeTUs (Italian Myeloma criteria for PET Use)*. *Eur J Nucl Med Mol Imaging*. 2016;43(3):414–21. <https://doi.org/10.1007/s00259-015-3200-9>.
- Nanni C, Versari A, Chauvie S, Bertone E, Bianchi A, Rensi M, Bellò M, Gallamini A, Patriarca F, Gay F, Gamberi B, Ghedini P, Cavo M, Fanti S, Zamagni E. Interpretation criteria for FDG PET/CT in multiple myeloma (IMPeTUs): final results. *IMPeTUs (Italian myeloma criteria for PET Use)*. *Eur J Nucl Med Mol Imaging*. 2018;45(5):712–9.
- Deng S, Zhang B, Zhou Y, Xu X, Li J, Sang S, Zhang W. The role of 18F-FDG PET/CT in multiple myeloma staging according to IMPeTUs: comparison of the Durie-Salmon Plus and other staging systems. *Contrast Media Mol Imaging*. 2018;30(2018):4198673.
- Zamagni E, Nanni C, Dozza L, et al. Standardization of 18F-FDG -PET/CT according to deauville criteria for metabolic complete response definition in newly diagnosed multiple myeloma. *J Clin Oncol*. 2020;JCO2000386.
- International Myeloma Working Group. Criteria for the classification of monoclonal gammopathies, multiple myeloma and related disorders: a report of the International Myeloma Working Group. *Br J Haematol*. 2003;121:749–57.
- Goldschmidt H, Mai EK, Dürig J, et al. Response-adapted lenalidomide maintenance in newly diagnosed myeloma: results from the phase III GMMG-MM5 trial. *Leukemia*. 2020;34:1853–65.
- Sachpekidis C, Merz M, Kopp-Schneider A, Jauch A, Raab MS, Sauer S, Hillengass J, Goldschmidt H, Dimitrakopoulou-Strauss A. Quantitative dynamic 18F-fluorodeoxyglucose positron emission tomography/computed tomography before autologous stem cell transplantation predicts survival in multiple myeloma. *Haematologica*. 2019;104(9):e420–3. <https://doi.org/10.3324/haematol.2018.213041>.
- PMOD Technologies LLC. <http://www.pmod.com/files/download/v31/doc/pbas/4729.htm>.
- Sachpekidis C, Mai EK, Goldschmidt H, et al. (18F)-FDG dynamic PET/CT in patients with multiple myeloma: patterns of tracer uptake and correlation with bone marrow plasma cell infiltration rate. *Clin Nucl Med*. 2015;40(6):e300–7.
- Neben K, Lokhorst HM, Jauch A, et al. Administration of bortezomib before and after autologous stem cell transplantation improves outcome in multiple myeloma patients with deletion 17p. *Blood*. 2012;119(4):940–8.
- Greipp PR, San Miguel J, Durie BG, Crowley JJ, Barlogie B, Bladé J, Boccardo M, Child JA, Avet-Loiseau H, Kyle RA, Lahuerta JJ, Ludwig H, Morgan G, Powles R, Shimizu K, Shustik C, Sonneveld P, Tosi P, Turesson I, Westin J. International staging system for multiple myeloma. *J Clin Oncol*. 2005;23(15):3412–20.
- Palumbo A, Avet-Loiseau H, Oliva S, et al. Revised international staging system for multiple myeloma: a report from International Myeloma Working Group. *J Clin Oncol*. 2015;33(26):2863–9.
- Zamagni E, Patriarca F, Nanni C, Zannetti B, Englora E, Pezzi A, Tacchetti P, Buttignol S, Perrone G, Brioli A, Pantani L, Terragna C, Carobolante F, Baccharani M, Fanin R, Fanti S, Cavo M. Prognostic relevance of 18-F FDG PET/CT in newly diagnosed multiple myeloma patients treated with up-front autologous transplantation. *Blood*. 2011;118(23):5989–95.
- Zamagni E, Nanni C, Mancuso K, Tacchetti P, Pezzi A, Pantani L, Zannetti B, Rambaldi I, Brioli A, Rocchi S, Terragna C, Martello M, Marzocchi G, Borsi E, Rizzello I, Fanti S, Cavo M. PET/CT improves the definition of complete response and allows to detect otherwise unidentifiable skeletal progression in multiple myeloma. *Clin Cancer Res*. 2015;21(19):4384–90.
- Davies FE, Rosenthal A, Rasche L, Petty NM, McDonald JE, Ntambi JA, Steward DM, Panozzo SB, van Rhee F, Zangari M, Schinke CD, Thanendrarajan S, Walker B, Weinhold N, Barlogie B, Hoering A, Morgan GJ. Treatment to suppression of focal lesions on positron emission tomography-computed tomography is a therapeutic goal in newly diagnosed multiple myeloma. *Haematologica*. 2018;103(6):1047–53.
- Bartel TB, Haessler J, Brown TL, Shaughnessy JD Jr, van Rhee F, Anaissie E, Alpe T, Angtuaco E, Walker R, Epstein J, Crowley J, Barlogie B. F18-fluorodeoxyglucose positron emission tomography in the context of other imaging techniques and prognostic factors in multiple myeloma. *Blood*. 2009;114(10):2068–76.
- Haznedar R, Akı SZ, Akdemir OU, Ozkurt ZN, Celenli O, Yağcı M, Sucak GT, Unlü M. Value of 18F-fluorodeoxyglucose uptake in positron emission tomography/computed tomography in predicting survival in multiple myeloma. *Eur J Nucl Med Mol Imaging*. 2011;38(6):1046–53.
- Chakraverty R, Rabin N, Peggs K, Robinson S, Duncan JR, Yong K. Dermatomyositis and sarcoid-like reaction associated with multiple myeloma treated effectively by high-dose chemotherapy and autologous peripheral blood stem cell transplantation. *Bone Marrow Transplant*. 2001;27(11):1215–7.
- Li J, Chen S, Hu Y, Cai J. Bortezomib-induced severe pulmonary complications in multiple myeloma: a case report and literature review. *Oncol Lett*. 2016;11(3):2255–60.
- Bladé J, Samson D, Reece D, et al. Criteria for evaluating disease response and progression in patients with multiple myeloma treated by high-dose therapy and haemopoietic stem cell transplantation. *Myeloma*

- Subcommittee of the EBMT. European Group for Blood and Marrow Transplant. *Br J Haematol.* 1998;102:1115–23.
30. Durie BG, Harousseau JL, Miguel JS, et al. International Myeloma Working Group. International uniform response criteria for multiple myeloma. *Leukemia.* 2006;20:1467–73.
 31. Rasche L, Angtuaco EJ, Alpe TL, et al. The presence of large focal lesions is a strong independent prognostic factor in multiple myeloma. *Blood.* 2018;132(1):59–66.
 32. Terpos E, Katodritou E, Roussou M, et al. Greek Myeloma Study Group, Greece. High serum lactate dehydrogenase adds prognostic value to the international myeloma staging system even in the era of novel agents. *Eur J Haematol.* 2010;85(2):114–9.
 33. Barrington SF, Qian W, Somer EJ, et al. Concordance between four European centres of PET reporting criteria designed for use in multicentre trials in Hodgkin lymphoma. *Eur J Nucl Med Mol Imaging.* 2010;37(10):1824–33.
 34. Biggi A, Gallamini A, Chauvie S, et al. International validation study for interim PET in ABVD-treated, advanced-stage hodgkin lymphoma: interpretation criteria and concordance rate among reviewers. *J Nucl Med.* 2013;54(5):683–90.
 35. Fonti R, Pellegrino S, Catalano L, Pane F, Del Vecchio S, Pace L. Visual and volumetric parameters by 18F-FDG -PET/CT: a head to head comparison for the prediction of outcome in patients with multiple myeloma. *Ann Hematol.* 2020;99(1):127–35.
 36. Sauer S, Sachpekidis C, Brandelik S, et al. Prospective evaluation of 18-F FDG PET/CT and biopsies of osteolytic lesions and random bone marrow samples in newly diagnosed multiple myeloma patients. *Blood.* 2018;132(Supplement 1):3180.

Publisher's Note

Springer Nature remains neutral with regard to jurisdictional claims in published maps and institutional affiliations.

Submit your manuscript to a SpringerOpen[®] journal and benefit from:

- Convenient online submission
- Rigorous peer review
- Open access: articles freely available online
- High visibility within the field
- Retaining the copyright to your article

Submit your next manuscript at ► [springeropen.com](https://www.springeropen.com)
