

ORIGINAL ARTICLE

Mixotrophy drives niche expansion of verrucomicrobial methanotrophs

Carlo R Carere^{1,2}, Kiel Hards³, Karen M Houghton¹, Jean F Power¹, Ben McDonald², Christophe Collet², Daniel J Gapes², Richard Sparling⁴, Eric S Boyd⁵, Gregory M Cook³, Chris Greening^{3,6,7} and Matthew B Stott¹

¹Extremophile Research Group, GNS Science, Taupō, New Zealand; ²Scion, Te Papa Tipu Innovation Park, Rotorua, New Zealand; ³Department of Microbiology and Immunology, University of Otago, New Zealand; ⁴Department of Microbiology, University of Manitoba, MB, Canada; ⁵Department of Microbiology and Immunology, Montana State University, MT, USA; ⁶Land and Water Flagship, CSIRO, ACT, Australia and ⁷Centre for Geometric Biology and School of Biological Sciences, Monash University, Clayton, VIC, Australia

Aerobic methanotrophic bacteria have evolved a specialist lifestyle dependent on consumption of methane and other short-chain carbon compounds. However, their apparent substrate specialism runs contrary to the high relative abundance of these microorganisms in dynamic environments, where the availability of methane and oxygen fluctuates. In this work, we provide *in situ* and *ex situ* evidence that verrucomicrobial methanotrophs are mixotrophs. Verrucomicrobia-dominated soil communities from an acidic geothermal field in Rotokawa, New Zealand rapidly oxidised methane and hydrogen simultaneously. We isolated and characterised a verrucomicrobial strain from these soils, *Methylacidiphilum* sp. RTK17.1, and showed that it constitutively oxidises molecular hydrogen. Genomic analysis confirmed that this strain encoded two [NiFe]-hydrogenases (group 1d and 3b), and biochemical assays revealed that it used hydrogen as an electron donor for aerobic respiration and carbon fixation. While the strain could grow heterotrophically on methane or autotrophically on hydrogen, it grew optimally by combining these metabolic strategies. Hydrogen oxidation was particularly important for adaptation to methane and oxygen limitation. Complementary to recent findings of hydrogenotrophic growth by *Methylacidiphilum fumariolicum* SoIV, our findings illustrate that verrucomicrobial methanotrophs have evolved to simultaneously utilise hydrogen and methane from geothermal sources to meet energy and carbon demands where nutrient flux is dynamic. This mixotrophic lifestyle is likely to have facilitated expansion of the niche space occupied by these microorganisms, allowing them to become dominant in geothermally influenced surface soils. Genes encoding putative oxygen-tolerant uptake [NiFe]-hydrogenases were identified in all publicly available methanotroph genomes, suggesting hydrogen oxidation is a general metabolic strategy in this guild. *The ISME Journal* (2017) 11, 2599–2610; doi:10.1038/ismej.2017.112; published online 4 August 2017

Introduction

Aerobic methane-oxidising bacteria (methanotrophs) consume the potent greenhouse gas methane (CH₄) (Kirschke *et al.*, 2013). They serve as the primary biological sink of atmospheric methane (~30 Tg annum⁻¹) (Hanson and Hanson, 1996) and, together with anaerobic methane-oxidising archaea, also capture the majority of biologically and geologically produced CH₄ before it enters the atmosphere

(Oremland and Culbertson, 1992). Relative to their global impact as greenhouse gas mitigators, aerobic methanotrophs exhibit low phylogenetic diversity and are presently limited to 26 genera in the Alphaproteobacteria and Gammaproteobacteria (Euzéby, 1997), two candidate genera in the phylum Verrucomicrobia (Op den Camp *et al.*, 2009; van Teeseling *et al.*, 2014), and two representatives of candidate phylum NC10 (Ettwig *et al.*, 2010; Haroon *et al.*, 2013). Reflecting their aerobic methylophilic lifestyle, methanotrophs thrive in oxic–anoxic interfaces where CH₄ fluxes are high, including peat bogs, wetlands, rice paddies, forest soils and geothermal habitats (Singh *et al.*, 2010; Knief, 2015). However, they also exist within soil and marine ecosystems where CH₄ and oxygen (O₂) are more variable (Knief *et al.*, 2003; Tavormina *et al.*, 2010; Knief, 2015).

Correspondence: C Greening, Centre for Geometric Biology and School of Biological Sciences, Monash University, 18 Innovation Walk, Clayton, VIC 3800, Australia.

E-mail: chris.greening@monash.au

or M Stott, GNS Science, Wairakei Research Centre, 114 Karetoto Road, Wairakei, Taupō 3352, New Zealand.

E-mail: matthew.stott@canterbury.ac.nz

Received 30 December 2016; revised 7 April 2017; accepted 12 May 2017; published online 4 August 2017

Based on current paradigms, aerobic methanotrophs are thought to primarily grow on one-carbon (C1) compounds in the environment (Dedysh *et al.*, 2005). All species can grow by oxidising CH₄ to methanol *via* particulate or soluble methane monooxygenase. They subsequently oxidise methanol to carbon dioxide (CO₂), yielding reducing equivalents (e.g. NADH) for respiration and biosynthesis. Proteobacterial methanotrophs generate biomass by assimilating the intermediate formaldehyde *via* the ribulose monophosphate or serine pathways (Hanson and Hanson, 1996). In contrast, verrucomicrobial methanotrophs oxidise methanol directly to formate (Keltjens *et al.*, 2014) and generate biomass by fixing CO₂ *via* the Calvin–Benson–Bassham cycle (Khadem *et al.*, 2011). While these specialist C1-based metabolisms are thought to be the primary growth strategy under optimal conditions (i.e. CH₄ and O₂ replete conditions), they would presumably be less effective in dynamic environments where CH₄ and oxidant availability are likely to fluctuate. To add to this complexity, the methane monooxygenase reaction (CH₄+O₂+[NAD(P)H+H⁺]/QH₂→CH₃OH+NAD(P)⁺/Q+H₂O) (Hakemian and Rosenzweig, 2007) is metabolically demanding, given it requires simultaneous sources of CH₄, endogenous reductant (NAD(P)H or quinol) and exogenous O₂ to proceed. Methanotrophs therefore must carefully allocate resources to meet carbon, energy and reductant demands (Hanson and Hanson, 1996). This complex balancing act provokes that, in order to be viable in environments limited for CH₄ and O₂ gases (Knief *et al.*, 2003; Tavormina *et al.*, 2010), methanotrophs should be able to supplement C1 usage with other energy-yielding strategies.

Recent pure culture studies have provided evidence that CH₄-oxidising bacteria are indeed more metabolically versatile than previously thought. A minority of conventional methanotrophs can meet energy demands by oxidising the trace concentrations of CH₄ (1.8 ppmv) found in the atmosphere (Kolb *et al.*, 2005; Ho *et al.*, 2013; Cai *et al.*, 2016). Contrary to the long-held paradigm that methanotrophs are obligate methylotrophs, species from three alphaproteobacterial genera have been shown to grow on simple organic acids, alcohols and short-chain alkane gases (Dedysh *et al.*, 2005; Crombie and Murrell, 2014). Most recently, it has been shown that some methanotrophs are not exclusive heterotrophs: the verrucomicrobium *Methylacidiphilum fumarolicum* SolV can sustain chemolithoautotrophic growth on molecular hydrogen (H₂) through the activity of two [NiFe]-hydrogenases (Mohammadi *et al.*, 2016). Proteobacterial methanotrophs can also consume H₂, though to date this process has only been reported as providing reductant to supplement methanotrophic growth (Chen and Yoch, 1987; Shah *et al.*, 1995; Hanczár *et al.*, 2002). Our recent findings demonstrating a widespread distribution and diversity of hydrogenases in aerobic bacteria, in specific methanotrophs (Greening *et al.*, 2014a,b, 2015,

2016), led us to surmise that H₂ metabolism could serve a multifaceted role in adaptation of methanotrophic bacteria to their environment. Specifically, H₂ may serve as an important electron donor for the organism to meet carbon, energy and reductant demands in response to fluctuations in CH₄ and oxidant availability.

In this work, we addressed this hypothesis by conducting an interdisciplinary investigation of the role of H₂ in defining the physiology and ecology of verrucomicrobial methanotrophs. Evidence obtained from *in situ* field studies indicate that Verrucomicrobia simultaneously oxidised CH₄ and H₂ in geothermally heated soils in Rotokawa, New Zealand, suggesting they are mixotrophic with respect to energy metabolism. Pure culture studies on a verrucomicrobium representative isolated from this site confirmed that the microorganism grew most efficiently through a mixotrophic lifestyle and depended on H₂ consumption to acclimate to fluctuations in CH₄ and O₂ availability. Integrating these findings with genome surveys, we propose that H₂ oxidation expands the ecological niche of methanotrophs, enabling them to meet energy and biomass demands in dynamic environments where O₂ and CH₄ concentrations are variable. We provide evidence that, while methanotrophic bacteria are often pervasively viewed as C1 specialists, their niche space is likely broader than previously recognised. Combining heterotrophic and lithotrophic electron donors allows for a more flexible growth/survival strategy with clear ecological benefits (Semrau *et al.*, 2011).

Materials and methods

Environmental sampling

Soil samples (~50 g) were collected every 10 cm from the surface of the Rotokawa sampling site (38°37'30.8" S, 176°11'55.3"E) to a maximum depth of 50 cm. Soil temperatures were measured in the field using a 51II single input digital thermometer (Fluke, Everett, WA, USA). The pH of the soil (1 g in 10 ml of dH₂O) was measured upon returning to the laboratory using a model HI11310 pH probe (Hanna Instruments, Woonsocket, RI, USA). Soil gas samples were collected every 10 cm using a custom-built gas-sampling probe equipped with a 1 l gas-tight syringe (SGE Analytical Science, Melbourne, VIC, Australia). Gas samples were collected and stored at 25 °C in 50 ml Air & Gas Sampling Bags (Calibrated Instruments, McHenry, MD, USA) and were processed within 48 h on a 490 MicroGC (Agilent Technologies, Santa Clara, CA, USA) equipped with Molecular Sieve 5A with a heated injector (50 °C, back-flush at 5.10 s, column at 90 °C, 150 kPa), a PoraPak Q column with a heated injector (50 °C, no back-flush, column at 70 °C, 50 kPa) and a 5CB column with a heated injector (50 °C, no back-flush, column at 80 °C, 150 kPa). CH₄ and H₂ gas consumption by soil microbial communities was determined by incubating 1 g of soils collected from

the Rotokawa sampling site (depth <10 cm) in 112 ml gas-tight serum bottles at 37 and 50 °C. The serum bottle headspaces were amended with 300 ppmv H₂ or 400 ppmv CH₄. Headspace CH₄ and H₂ mixing ratios were measured with a PeakPerformer gas chromatograph (Peak Laboratories, Mountain View, CA, USA) equipped with a flame ionising detector (FID: CH₄) and a PP1 Gas Analyzer (Peak Laboratories, Mountain View, CA, USA) equipped with a reducing compound photometer (RCP: H₂).

Isolation and cultivation of Methylocidiphilum sp. RTK17.1

Soil samples (1 g) from the first 10 cm of soil at the Rotokawa sampling site were inoculated into serum bottles containing 50 ml media (pH 2.5). All cultivations were performed in a V4 mineral medium as described previously (Dunfield *et al.*, 2007) but with the addition (0.2 µm) of rare earth elements lanthanum and cerium (Pol *et al.*, 2014). CH₄ (10% v/v) and CO₂ (1%) were added to an air headspace and samples were incubated at 60 °C with shaking 150 r.p.m. CH₄ in the headspace was monitored with a PeakPerformer gas chromatograph (Peak Laboratories) equipped with an FID. Following several passages (10% v/v) into liquid media, enrichments were transferred onto solid media. Following several weeks incubation (60 °C) single colonies were re-streaked before being transferred back into liquid media. Isolate identity was confirmed via sequencing of the 16S rRNA gene (Macrogen, South Korea) using bacterial 9f/1492r primers (Weisburg *et al.*, 1991).

Bioreactor and batch cultivation

Methylocidiphilum sp. RTK17.1 was cultivated to the stationary phase for subsequent hydrogenase activity and oxygen respiration measurements in a semi-continuous static-liquid fed-batch bioreactor (New Brunswick; volume 1 l, pH control 2.5, temp 50 °C, agitation 100 r.p.m.) in an artificial headspace composed of 10% CH₄, 10% H₂, 20% O₂, 40% CO₂ (v/v, balance N₂; flow rate 60 ml min⁻¹) equipped with headspace recirculation and automated sampling via a 490 MicroGC (Agilent Technologies). Gas mixtures were supplied for 2 min every hour at a rate of 60 ml min⁻¹. Gas feeds for the bioreactor, batch and chemostat cultivation-based experimental work are presented as headspace compositions. For batch culture experiments, 350 ml cultures (in triplicate) were incubated in 1 l rubber-stoppered Schott bottles. The headspace of the bottles was amended with different mixing ratios of H₂, CH₄, O₂ and CO₂ gas, as described in figure legends. Acetylene gas was added in some experiments (4% v/v) to inhibit MMO activity as previously described (Bédard and Knowles, 1989). Finally, to determine if growth was enhanced in the presence of H₂, 20 paired cultures (*n*=40) of *Methylocidiphilum sp. RTK17.1* were incubated

with or without 1% (v/v) H₂ in an air headspace supplemented with (v/v) 10% CH₄ and 1% CO₂. Cultures were incubated in a custom test tube oscillator (agitation 1.2 Hz; Terratec, Hobart, TAS, Australia). Following 7 days incubation, total protein was determined by the Bradford assay (Bradford, 1976). Statistical significance of observed differences of growth yields was determined using a Student's *t*-test ($\alpha=0.05$). Headspace mixing ratios of H₂ and CH₄ were monitored throughout batch experiments by GC as described above.

Chemostat cultivation

Chemostat cultivation of *Methylocidiphilum sp. RTK17.1* was performed to investigate the influence of H₂ on growth under O₂-replete and O₂-limiting conditions. A 1 l bioreactor (BioFlo 110; New Brunswick Scientific, Edison, NJ, USA) was used for these studies. Cultures were incubated at 50 °C and pH 2.5 with continuous stirring (800 r.p.m.). Bioreactor volume was kept constant at 0.5 l by automatic regulation of the culture level. V4 mineral media was supplied at a constant flow rate of 10 ml h⁻¹ (*D*=0.02 h⁻¹). Dissolved O₂ was monitored using an InPro 6810 Polarographic Oxygen Sensor (Mettler-Toledo, Columbus, OH, USA). Custom gas mixtures were prepared in a compressed gas cylinder and supplied to the chemostat at a rate of 10 ml min⁻¹ using a mass flow controller (El-flow, Bronkhorst, Netherlands). Gas mixtures contained approximately (v/v) 3% CH₄ and 26% CO₂ for all experiments. For O₂-replete and O₂-limiting conditions, influent O₂ was supplied at (v/v) 14.1% and 3.5%, respectively. Within respiring cultures, these values corresponded to 57.5% and 0.17% oxygen saturation. High, medium and low H₂ experiments consisted of (v/v) 1.9%, 0.7% and 0.4% H₂ additions. The balance of all gas mixtures was made up with N₂. Cell density in liquid samples was monitored by measuring turbidity at 600 nm using a Ultrospec 10 cell density meter (Amersham Bioscience, UK). One unit of OD₆₀₀ was found to be equivalent to 0.43 g l⁻¹ cell dry weight for *Methylocidiphilum sp. RTK17.1*. After achieving a steady-state condition as determined by OD₆₀₀, influent and effluent gas concentrations were monitored over several days using a 490 MicroGC (Agilent Technologies). Biomass cell dry weight was used to calculate growth rate and specific gas consumption rate.

Whole-cell biochemical assays

Hydrogenase activity of *Methylocidiphilum sp. RTK17.1* was measured in stationary-phase cultures harvested from the bioreactor. For amperometric measurements, whole cells were concentrated 5-, 10-, 20- and 30-fold by centrifugation followed by resuspension in V4 mineral medium (pH 3.0). Rate of H₂ oxidation was measured at 50 °C using an H₂-MR

microsensor (Unisense, Denmark) as previously described (Berney *et al.*, 2014b; Greening *et al.*, 2015). For colourimetric assays, 500 ml culture was harvested by centrifugation (15 min, 5000 × *g*, 4 °C) and treated as previously described (Greening *et al.*, 2014a, 2015) to prepare crude, cytosolic and membrane fractions for analysis. To test for hydrogenase activity, samples (20 µg protein) from each cell fraction were incubated with 1 ml 50 mM potassium phosphate buffer (pH 7.0) and 50 µM benzyl viologen for 8 h in an anaerobic chamber (5% H₂, 10% CO₂, 85% N₂ (v/v)). Debris was removed by centrifugation (15 min, 10 000 × *g*, 4 °C) and the absorbance of the supernatants was read at 604 nm in a Jenway 6300 spectrophotometer (Cole Palmer, UK). O₂ consumption experiments were performed on cell suspensions of *Methylacidiphilum* sp. RTK17.1 to determine the influence of endogenous glycogen catabolism (Khadem *et al.*, 2012a) on O₂-dependent hydrogenase measurements. For these experiments, 2 ml cells (OD₆₀₀ 1.0) were added to a Clarke-type oxygen electrode and incubated at 50 °C for up to 12 min without the addition of exogenous energy sources. Cell suspensions were treated with the protonophore 1 µM, carbonyl cyanide *m*-chlorophenyl hydrazine (CCCP), 1 mM iodoacetamide (an inhibitor of glycolysis) and 1 mM potassium cyanide (KCN) to determine whether observed rates of O₂ consumption were a consequence of glycogen catabolism. An oxygen solubility value of 220 nmol ml⁻¹ was used for calculations. Values were expressed as nmol O₂ min⁻¹ (mg protein)⁻¹. Protein was determined, from lysed cell pellets, using the BCA assay (Thermo Fisher Scientific, Waltham, MA, USA), with bovine serum albumin as a standard.

CO₂ fixation was measured by incubating cultures with ¹⁴C-labelled HCO₃⁻ (as CO₂ at medium pH of 2.3). Triplicate cultures were initially grown at 50 °C with a headspace of CH₄ (20%), CO₂ (10%), H₂ (10%) in air. At late exponential stage growth, the headspaces of cultures (and heat-killed controls) were replaced by sparging with N₂ (10 min) and then amended with H₂ (8%), CO₂ (8%) and O₂ (1%). 15 µCi of ¹⁴C-HCO₃⁻ (51 mCi mmol⁻¹; American Radiolabeled Chemical, St Louis, MO, USA) were added to each culture. Given that the pK_a for HCO₃⁻ at 50 °C is ~6.8 (Amend and Shock, 2001), it was assumed that all added radiolabelled substrate equilibrated with unlabelled CO₂ pools immediately. Subsamples (1 ml) were harvested by centrifugation at regular time points, washed with sterile medium and subjected to liquid scintillation counting using Cytoscint cocktail as previously described (Urschel *et al.*, 2015). Disintegrations per minute were converted to rates of CO₂ fixed using previously described approaches (Urschel *et al.*, 2015).

Details of nucleic acid extraction, amplification, genome sequencing, environmental quantitative PCR and soil microbial community composition determination methodologies are presented in the Supplementary Information.

Results and discussion

Verrucomicrobia-dominated surface soils serve as a sink of geothermally derived H₂ and CH₄ in Rotokawa geothermal field

We performed a geochemical, molecular and biochemical survey of CH₄ and H₂ metabolism in an acidic geothermal soil in Rotokawa, New Zealand. The Rotokawa geothermal field is a predominately steam-driven system dominated by acidic and sulphurous springs and heated soil features. We selected a geothermally heated and acidic soil where previous studies have indicated methanotrophic activity (Sharp *et al.*, 2014). Substantial vertical gradients in temperature, pH and mixing ratios of CH₄, H₂ and O₂ were observed in the soil profile (Figure 1a). Consistent with the geothermal activity at the site, high soil mixing ratios of CH₄ (47 000 ppmv) and H₂ (280 ppmv) were detectable at the deepest soil depths sampled. The levels of both gases decreased in the upper 30 cm of soil and, in the case of H₂, dropped towards atmospheric levels by 10 cm depth (Figure 1b). These sharp decreases suggested that there were active methanotrophs and hydrogenotrophs in the oxic zone of the soil that consume most geothermally derived gas before it is emitted into the atmosphere. Indeed, microcosm incubations containing surface soils and associated communities rapidly consumed H₂ and CH₄ introduced into ambient air headspaces. Rates of H₂ oxidation exceeded that of CH₄, suggesting that H₂ serves as a major energy source for this geothermal soil community (Figures 1c and d).

To infer the microorganisms responsible for CH₄ and H₂ uptake, we determined the microbial community structure of the soil profile. Consistent with findings in other acidic soil ecosystems (Golyshina, 2011; Sharp *et al.*, 2014; Lee *et al.*, 2016), the euryarchaeotal order Thermoplasmatales was dominant at all depths. Methanotrophic verrucomicrobial genera, specifically *Methylacidiphilum* spp. and *Methylacidimicrobium* spp., were the dominant bacterial OTUs in surface soils and accounted for 47% of all bacterial 16S rRNA gene sequences in the soil profile (Figure 1e). Bacteria from these genera have been previously isolated in acidic geothermal soils in New Zealand (Dunfield *et al.*, 2007; Sharp *et al.*, 2014), Kamchatka (Islam *et al.*, 2008) and Italy (Pol *et al.*, 2007; van Teeseling *et al.*, 2014). As the only known acidophilic methanotrophs (Op den Camp *et al.*, 2009), it is probable that the verrucomicrobial phylotypes were solely responsible for CH₄ consumption in this ecosystem. Moreover, given putative uptake [NiFe]-hydrogenases have been detected in the genomes of *Methylacidiphilales* but not in Thermoplasmatales (Hou *et al.*, 2008; Khadem *et al.*, 2012b; Greening *et al.*, 2016), it was likely that the *Verrucomicrobia* detected in these soils serve as major sinks of H₂ in this ecosystem. To test this possibility, we designed PCR primers to detect the presence of genes encoding the large

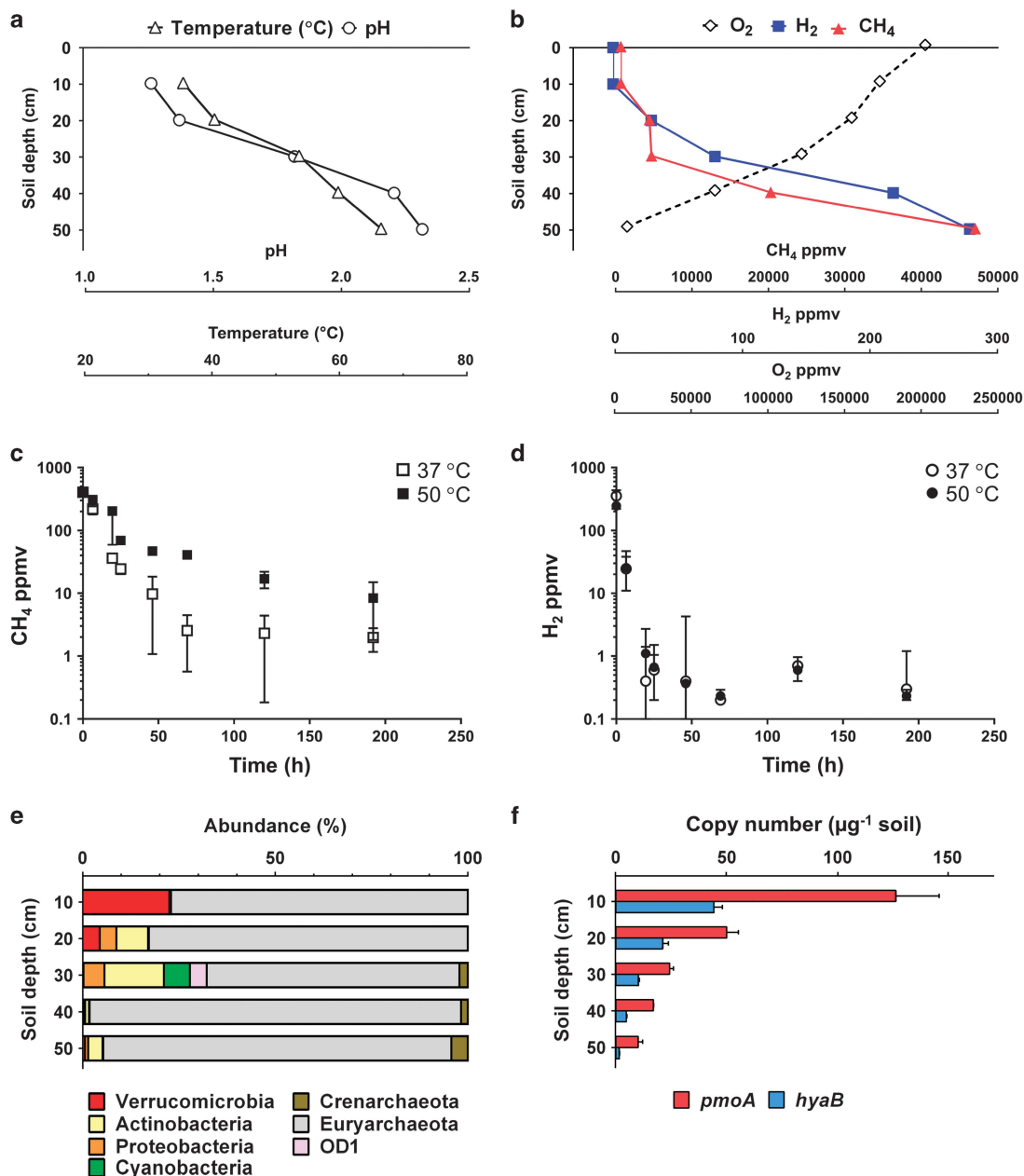


Figure 1 Geochemical, biochemical and molecular profile of CH₄ and H₂ oxidation at a geothermal field in Rotokawa, New Zealand. (a) Temperature and pH of the soils at different depths. (b) Soil mixing ratios of CH₄, H₂ and O₂ at different depths. (c) Oxidation of CH₄ by surface soils. (d) Oxidation of H₂ by surface soils. In both (c) and (d), soil samples of 1 g were collected from the first 10 cm of soil from the profile and incubated in serum vials containing a CH₄- or H₂-supplemented ambient air headspaces. The average and standard deviation of triplicate samples are shown. (e) Community structure of the study site at different soil depths. Illumina 16S rRNA gene sequencing was performed on total genomic DNA extracted from samples taken at 10–50 cm soil depth. Non-rarefied abundance results (%) are shown for all OTUs (> 100 reads) from 130 289 total sequence reads (with an average of 26 058 per sample depth). Consistent with a methanotrophic lifestyle, all verrucomicrobial OTUs were further classified into the family Methylococcaceae. (f) Abundance of genes encoding Verrucomicrobia-type particulate methane monooxygenase (*pmoA*) and aerobic uptake hydrogenase (*hyaB*) plotted as a function of soil depth. Error bars represent the standard deviation of triplicate measurements on each extract. Differences in the copy number between *pmoA* and *hyaB* are attributable to the multiple isoforms of *pmoA* encoded in *Methylococcophilum* spp. genomes.

subunits of the three particulate methane monooxygenases (*pmoA*) and a single oxygen-tolerant uptake hydrogenase (*hyaB*) encoded in the genome of *Methylococcophilum inferorum* V4 (Hou et al., 2008) (Supplementary Table S1). These primers were applied in qPCRs on DNA extracts from the Rotokawa soil profile. Both the hydrogenase and

methane monooxygenase genes were detected at all depths, with the most abundant templates detected in the top 10 cm of soil (Figure 1f), corresponding to the zones with the highest relative abundance of Verrucomicrobia-affiliated sequences and where the lowest CH₄ and H₂ soil gas concentrations were detected (Figure 1b).

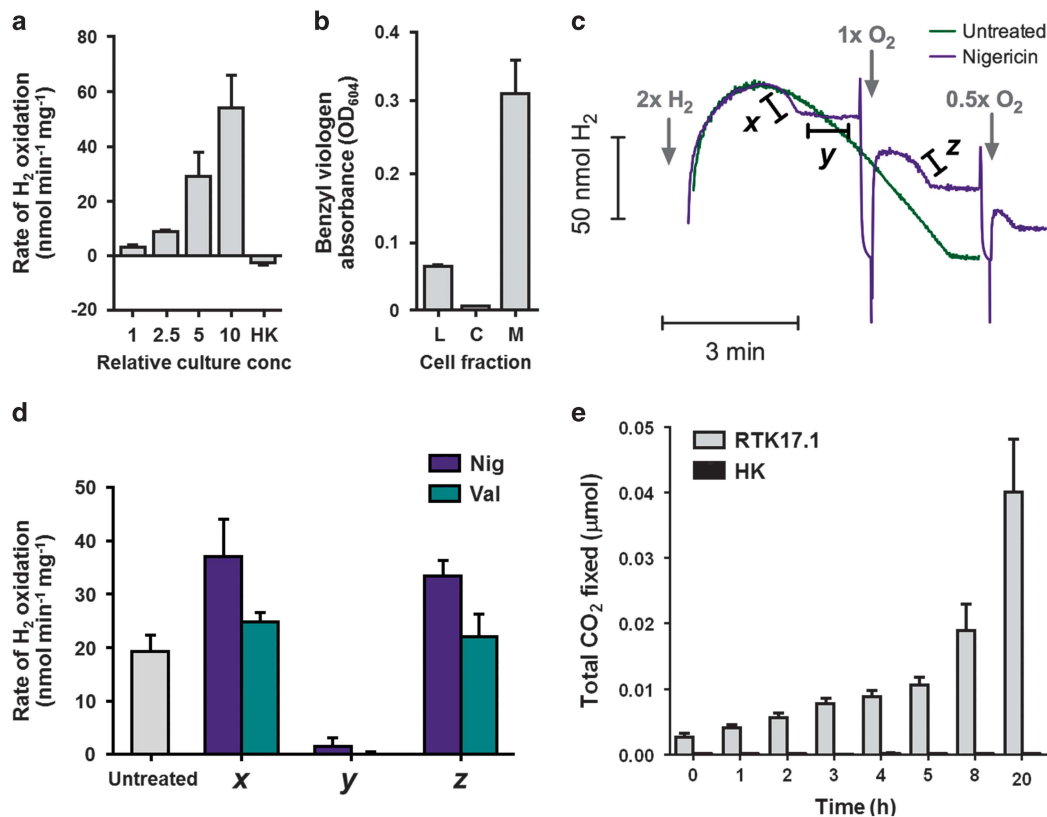


Figure 2 H_2 oxidation drives aerobic respiration and CO_2 fixation in *Methylococcoides burtonii* sp. RTK17.1. (a) Real-time oxidation of H_2 by bioreactor-cultivated whole cells. Rates of H_2 uptake were measured amperometrically using a H_2 microsensor. Density dependence and heat sensitivity (HK) of the process are shown. (b) Localisation of hydrogenase activity in cell membranes. Activity was measured colourimetrically by incubating cell fractions in an anaerobic chamber in the presence of H_2 and the artificial electron acceptor/redox dye benzyl viologen. The protein concentration-normalised absorbance of activity in cell lysates (L), cytosols (C) and membranes (M) are shown. (c) Aerobic respiratory dependence of H_2 uptake in whole cells. Real-time traces in untreated cells and nigericin-treated cells are shown. The relative amounts of H_2 and O_2 added at specific time points are shown. (d) Rates of hydrogen oxidation of untreated, nigericin-treated and valinomycin-treated cells. For the uncoupler-treated cultures, the initial (x), O_2 -limiting (y) and O_2 -restored (z) rates of H_2 oxidation are shown, which correspond to the rates highlighted in panel (c). Endogenous glycogen catabolism likely contributed to oxygen limitation (y) observed in nigericin-treated cells (Supplementary Figure S5B). (e) CO_2 fixation by batch-cultivated whole cells cultivated under microoxic growth conditions with H_2 and O_2 as the sole reductant and oxidant (Supplementary Figure S2A). ^{14}C -labelled CO_2 is incorporated into biomass in live but not heat-killed (HK) cultures. CO_2 fixed per mol of biomass in live and heat-killed cells is presented as a function of time.

A verrucomicrobial strain isolated from Rotokawa constitutively oxidises CH_4 and H_2 gas

To gain insight into the metabolic strategies that Verrucomicrobia use to dominate bacterial assemblages in geothermally heated acidic soil ecosystems, we isolated a thermotolerant methanotroph from surface soils. The strain, *Methylococcoides burtonii* sp. RTK17.1 (Supplementary Table S2), grew optimally at pH 2.5, 50 °C (T_{max} 60 °C) and shared 99% 16S rRNA gene sequence identity with *Methylococcoides burtonii* V4 (Dunfield *et al.*, 2007). Bacteriological characterisation confirmed that the strain, in common with other verrucomicrobial methanotrophs (Khadem *et al.*, 2012a, 2011), oxidised CH_4 , fixed CO_2 and accumulated glycogen. In addition, cultures rapidly consumed exogenous H_2 (Supplementary Figures S2 and S3). Real-time amperometric measurements confirmed that the strain oxidised H_2 under oxic conditions at rates proportional to increases in cell density (Figure 2a). H_2 oxidation occurred in all batch

culture conditions tested, including when CH_4 was absent (Supplementary Figure S1A), when CH_4 was in excess (Supplementary Figure S1C), and following inhibition of CH_4 oxidation with acetylene (Supplementary Figure S2). This suggests that H_2 and CH_4 are oxidised independently serving to energise the respiratory chain through the reduction of the quinone pool. Moreover, this expands the role of hydrogenases in aerobic methanotrophs beyond their previously suggested role of providing reductant for pMMO (Shah *et al.*, 1995; Hanczár *et al.*, 2002). The observation that RTK17.1 can constitutively oxidise H_2 and CH_4 parallels results from the soil study showing that both H_2 and CH_4 are simultaneously oxidised (Figure 1). Considering that Verrucomicrobia are dominant among taxa putatively capable of oxidising H_2 or CH_4 , this provides further evidence that verrucomicrobial methanotrophs adopt a mixotrophic lifestyle with respect to their energy metabolism.

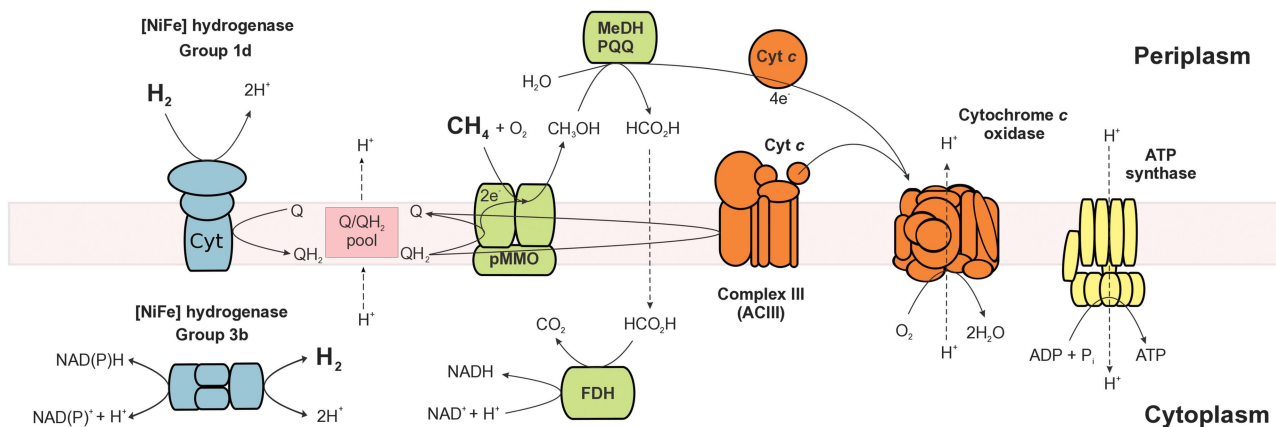


Figure 3 Proposed model of methane (CH_4) and hydrogen (H_2) oxidation in *Methylococcoides burtonii* sp. RTK17.1. During mixotrophic growth, the oxidation of both H_2 and CH_4 yields reducing equivalents in the form of reduced quinones (QH_2). A large proton-motive force is generated and sufficient ATP is produced for growth via an H^+ -translocating F_1F_0 -ATP synthase. Some of the quinol generated through H_2 oxidation provides the electrons necessary for pMMO catalysis. Following CH_4 oxidation by pMMO, ensuing reactions catalysed by an XoxF-type methanol dehydrogenase (MeDH) and formate dehydrogenase (FDH) contribute additional reductant (cyt *c* and NADH) into the respiratory chain for ATP production and growth (Keltjens *et al.*, 2014). NADH reduced through the actions of the formate dehydrogenase and H_2 -dependent group 3b [NiFe]-hydrogenase is used to support CO_2 fixation through the Calvin–Benson–Bassham cycle. Respiratory complexes I and II are not shown but are encoded in the genome of *Methylococcoides burtonii* sp. RTK17.1 (Supplementary Table S1).

We sequenced the genome of *Methylococcoides burtonii* sp. RTK17.1 to obtain further insights into the potential functionality of this taxon (Supplementary Table S2). Genes encoding key enzymes and pathways for CH_4 oxidation to CO_2 , CO_2 fixation through the Calvin–Benson–Bassham pathway, and aerobic respiration (Figure 3) were highly conserved with those identified in other *Methylococcoides burtonii* strains (Hou *et al.*, 2008; Khadem *et al.*, 2012b; Erikstad and Birkeland, 2015). We also detected two [NiFe]-hydrogenase-encoding gene clusters in the genome (Supplementary Figure S3) and confirmed their expression during aerobic growth with CH_4 and H_2 by RT-PCR (Supplementary Figure S4). The gene clusters were classified as groups 1d (*hyaABC*) and 3b (*hyhBGS*) [NiFe]-hydrogenases based on phylogenetic affiliation with biochemically characterised enzymes (Supplementary Figure S3; Greening *et al.*, 2016; Søndergaard *et al.*, 2016). Biochemically characterised group 1d [NiFe]-hydrogenase are H_2 -uptake multimeric proteins that are membrane-bound via their cytochrome *b* subunit (*hyaC*) and function by transferring electrons into the respiratory chain via the quinone pool (Fritsch *et al.*, 2011). Consistent with the observed activity of the [NiFe]-hydrogenase in the presence of O_2 (Figure 2a), enzymes of this class are predicted to be O_2 -tolerant due to the presence of a novel [4Fe3S] cluster that protects the O_2 -sensitive active site from oxidative damage (Fritsch *et al.*, 2011; Shomura *et al.*, 2011). Indeed, the six cysteine residues required to ligate such a cluster were conserved in the deduced RTK17.1 HyaB protein sequence. In comparison, biochemically characterised group 3b hydrogenases are reversible cytosolic enzymes that are relatively O_2 -sensitive (Kwan *et al.*, 2015); they directly couple NAD(P)H oxidation to H_2 formation during fermentation

(Berney *et al.*, 2014a) and, in some cases, H_2 oxidation by these enzymes supports CO_2 fixation through the production of reduced electron carriers (Yoon *et al.*, 1996). The RTK17.1 [NiFe]-hydrogenase combination differs from *Methylococcoides burtonii* SolV, where group 1 h/5 (*hhyLH*; a putative high-affinity H_2 uptake hydrogenase) and group 1d [NiFe]-hydrogenases (annotated as *hupSLZ*) were reported (Mohammadi *et al.*, 2016), with our previous survey (Greening *et al.*, 2016) also showing SolV encodes a group 3b enzyme (Supplementary Figure S3).

*H*₂ oxidation supports aerobic respiration and CO_2 fixation in the verrucomicrobial isolate

The observation that RTK17.1 encodes and utilises [NiFe]-hydrogenases prompted biochemical studies to investigate the role of H_2 in the metabolism of this bacterium. Biochemical assays targeting the group 1d [NiFe]-hydrogenase demonstrated that it is a membrane-bound uptake hydrogenase linked to the aerobic respiratory chain, consistent with our genome-based predictions. Fractionation experiments confirmed the activity was membrane-localised, as shown by the 31-fold increase in activity in membranes when compared to the cytosolic fraction (Figure 2b). We next tested the effect of the ionophores nigericin and valinomycin on rates of H_2 oxidation on whole cells (in the absence of CH_4). These compounds (nigericin and valinomycin) dissipate components of the electrochemical gradient used for ATP synthesis (pH and charge gradient, respectively) and the cellular response is to increase respiration to replenish the electrochemical gradient (Cook *et al.*, 2014) in a phenomenon known as uncoupling. H_2 oxidation increased upon treatment

with these ionophores (Figures 2c and d), showing hydrogenase activity behaves as expected from a component of the energy-conserving respiratory chain. This uncoupled activity rapidly ceased, due to O₂ consumption by the cells suspended in the sealed chamber, but could be restored by further supplementation with O₂. These results show hydrogenase is a *bona fide* component of this microorganism's respiratory chain and is coupled to the activity of terminal cytochrome oxidases. Under these conditions, the onset of O₂-limitation was likely exacerbated by the catabolism of endogenous glycogen reserves (Supplementary Figure S5). Collectively, these findings demonstrate that this group 1d [NiFe]-hydrogenase is a membrane-bound, respiratory-linked, O₂-tolerant/dependent enzyme that drives ATP synthesis as has been observed in other aerobic hydrogenotrophs.

To test whether H₂ oxidation coupled to O₂ reduction could support CO₂ fixation in RTK17.1, we transferred mixotrophically grown, log phase cultures into a new microoxic headspace (O₂ 1% v/v) in which H₂ (8% v/v of the headspace) was present as the sole exogenous electron donor and CO₂ (8% v/v) as the sole carbon source. Trace ¹⁴CO₂ (0.1% of total CO₂ supplied) was added and the amount fixed into biomass sampled over time was determined by measuring disintegrations per minute (DPM) via liquid scintillation counting. We observed systematic increases in DPMs associated with cells sampled over a 20 h period relative to controls, indicating that CO₂ was rapidly incorporated into biomass in a time-dependent manner. The number of DPMs associated with cells after 20 h of incubation were 200-fold greater in live than heat-killed cells (Figure 2e), showing that biological CO₂ fixation occurs in cultures supplied with H₂ as the sole reductant and O₂ as the sole oxidant. This activity was not observed in the absence of exogenous H₂, indicating that H₂ serves as the source of reductant for CO₂ fixation under these conditions.

H₂ oxidation supports adaptation of verrucomicrobial methanotrophs to CH₄ and O₂ limitation

The finding that *Methylacidiphilum* sp. RTK17.1 couples H₂ oxidation to aerobic respiration and carbon fixation suggests that it can grow chemolithoautotrophically. Consistent with this hypothesis, we observed a small but significant increase in biomass in cultures grown under microoxic conditions when H₂, CO₂ and O₂ (1% headspace concentration) were supplied as the sole electron donor, carbon source and electron acceptor, respectively (Supplementary Figure S2A). This biomass increase was concomitant with increased amounts of CO₂ fixed (Figure 2e), and the amount of carbon fixed per cell (40 to 80 fmol cell⁻¹) produced over this time period was consistent with biomass yields from other studies (Maestrini *et al.*, 2000). However, the observed growth rates (0.005 h⁻¹) were substantially lower than

observed when RTK17.1 was supplied with CH₄, CO₂ and H₂ (0.037 h⁻¹) and when *Methylacidiphilum fumariolicum* SolV was grown autotrophically in similar conditions (0.047 h⁻¹) (Mohammadi *et al.*, 2016). We also observed that autotrophic growth was only sustained when RTK17.1 was incubated under microoxic conditions (1% O₂) rather than in an oxic (20% O₂) headspace. We speculate that, under such microoxic conditions, sufficient O₂ is available to drive hydrogenotrophic aerobic respiration through activity of the group 1d [NiFe]-hydrogenase. Simultaneously, it is likely that the O₂-sensitive group 3b [NiFe]-hydrogenase can remain active and is able to supply reducing equivalents required for CO₂ fixation. In support of this notion, H₂ oxidation sustained energy-conservation *via* the group 1d hydrogenase of non-growing CH₄-limited cultures in the presence of ambient O₂ (Supplementary Figure S2C) and enhanced growth yields in CH₄-replete cultures (Supplementary Figure S2D).

To better understand the role of H₂ and CH₄ oxidation during mixotrophic growth, we compared growth and gas consumption kinetics of the cells cultivated in a chemostat under six different conditions (Table 1). We observed that H₂ addition into the feedgas of *Methylacidiphilum* sp. RTK17.1 increased growth yields under O₂-replete and O₂-limiting conditions. Whereas CH₄ oxidation predominated under O₂-replete conditions, the specific consumption rate of H₂ increased 80-fold and exceeded rates of CH₄ oxidation under O₂-limiting conditions. In combination, these results show that *Methylacidiphilum* sp. RTK17.1 grows mixotrophically and modulates rates of H₂ and CH₄ consumption in response to the availability of O₂ in order to balance energy-generation and carbon fixation.

H₂ oxidation may be a general ecological strategy for verrucomicrobial and proteobacterial methanotrophs

In this work, we demonstrated that a verrucomicrobial methanotroph adopts a mixotrophic lifestyle both *in situ* and *ex situ*. The environmental isolate *Methylacidiphilum* sp. RTK17.1 sustains aerobic respiration and carbon fixation by using organic (CH₄) and inorganic (H₂) electron donors either in concert or separately depending on substrate availability. Through the dual use of both electron donors, the bacterium is able to more flexibly adjust its metabolism to meet energy and carbon demands in response to simulated environmental change. A model of how CH₄ and H₂ metabolism is integrated into the physiology of this microorganism, based in part on genomic information (Supplementary Table S2), is shown in Figure 3. Integrating our genomic, physiological and biochemical findings, we conclude that the group 1d [NiFe]-hydrogenase is a membrane-bound uptake hydrogenase that is directly linked to the aerobic respiratory chain and supplements the quinone pool to power the methane monooxygenase reaction or feed directly into Complex

Table 1 H₂ oxidation by *Methylococcoides burtonii* sp. RTK17.1 during chemostat cultivation

Condition ^{a,b}	Growth rate ^c (mg l ⁻¹ h ⁻¹) ^c	H ₂ consumption		CH ₄ consumption		Biomass yield ^d (g _{CDW} mol ⁻¹ CH ₄) ^c
		(mmol l ⁻¹ h ⁻¹) ^c	(mmol g _{CDW} ⁻¹ h ⁻¹) ^c	(mmol l ⁻¹ h ⁻¹) ^c	(mmol g _{CDW} ⁻¹ h ⁻¹) ^c	
O ₂ -replete, medium H ₂	9.33 (±0.52)	0.01 (±0.01)	0.03 (±0.03)	1.06 (±0.12)	2.40 (±0.38)	8.90 (±1.51) ^e
O ₂ -replete, no H ₂	8.17 (±0.82)	0.00	0.00	1.22 (±0.05)	2.85 (±0.18)	6.68 (±0.41)
O ₂ -limiting, high H ₂	5.57 (±0.16)	0.78 (±0.02)	2.66 (±0.11)	0.55 (±0.03)	1.89 (±0.11)	10.11 (±0.64) ^f
O ₂ -limiting, medium H ₂	4.99 (±0.17)	0.33 (±0.01)	1.34 (±0.06)	0.70 (±0.02)	2.80 (±0.13)	7.16 (±0.34)
O ₂ -limiting, low H ₂	5.60 (±0.31)	0.19 (±0.00)	0.73 (±0.04)	0.71 (±0.01)	2.68 (±0.16)	7.87 (±0.45) ^f
O ₂ -limiting, no H ₂	5.40 (±0.26)	0.00	0.00	0.80 (±0.05)	3.11 (±0.27)	6.79 (±0.55)

^aFeedgas was continuously supplied at a rate of 10 ml min⁻¹ with the following composition % (v/v): O₂-replete, 14.1%; O₂-limiting, 3.5%. High, medium and low H₂ experiments consisted of 1.9%, 0.7% and 0.4% H₂ supply. For all experiments excess CH₄ was supplied at 3%, CO₂ at 26% with the balance made up with N₂. O₂ saturations in the medium were 57.5% and 0.17% for the O₂-replete and O₂-limiting conditions, respectively.

^bA dilution rate of 0.02 h⁻¹ was maintained for all experiments.

^cGram cell dry weight (g_{CDW}) measurements were determined by correlating OD₆₀₀ measurements to an existing standard curve (OD₆₀₀ = 1 corresponds to 0.43 g_{CDW} l⁻¹).

^dStandard deviation shown in brackets are calculated from a minimum of triplicate measurements.

^eDenotes significant increase (*P*-value <0.05) in yield from O₂-replete, no H₂ result; unpaired *t*-test, one tailed.

^fDenotes significant increase (*P*-value <0.05) in yield from O₂-limiting, no H₂ result; unpaired *t*-test, one tailed.

III. The organism is also capable of using H₂ as a reductant to support CO₂ fixation through the Calvin–Benson–Bassham pathway, likely through the cytosolic NAD(P)-coupled group 3b [NiFe]-hydrogenase. The [NiFe]-hydrogenase combination (group 1d and group 3b) in this RTK17.1 only supports weak autotrophic growth, but provides multiple layers of support for a mixotrophic lifestyle. In addition to supporting growth and survival during periods of CH₄ limitation, our data show that H₂ is the preferred electron donor during O₂-limiting conditions. Under these conditions, rates of H₂ consumption increased by 77-fold and exceeded observed rates of CH₄ oxidation (Table 1). This is likely to be a consequence of two factors. Firstly, some hydrogenases such as the group 3b [NiFe]-hydrogenase are inhibited at high O₂ concentrations (Kwan *et al.*, 2015). Secondly, methanotrophy is more resource-intensive than canonical aerobic hydrogenotrophy, given it requires O₂ both as a substrate for methane monooxygenase and as the terminal electron acceptor for respiration (Hakemian and Rosenzweig, 2007).

Comparison of our independent findings with those made by Mohammadi *et al.* (2016) suggests that verrucomicrobial methanotrophs have evolved a range of strategies to integrate H₂ metabolism into their physiology. Both *Methylococcoides burtonii* sp. RTK17.1 and *Methylococcoides burtonii* sp. SolV are capable of sustaining chemolithoautotrophic growth on H₂/CO₂ under microoxic conditions. However, the strains grow at drastically different rates of 0.005 and 0.047 h⁻¹ (Mohammadi *et al.*, 2016), respectively, under optimal conditions. These differences may reflect that, while both strains possess group 1d (*hyaABC/hupLSZ*) and group 3b (*hyhBGSL*) hydrogenases, SolV has also acquired a group 1h enzyme (*hhyLH*) (Greening *et al.*, 2016) with surprisingly fast whole-cell kinetics (Mohammadi *et al.*, 2016). It is possible that, with this enhanced hydrogenase suite, SolV may be able to more efficiently partition electrons derived from H₂ oxidation between respiration and carbon fixation. In

addition to supporting hydrogenotrophic growth, both organisms also modulate hydrogenase expression and H₂ oxidation rates in response to simulated environmental change, such as CH₄ and O₂ availability (Mohammadi *et al.*, 2016). While the physiological significance of this regulation was not explored in SolV, our studies inferred that H₂ co-oxidation with CH₄ enhanced yields during CH₄ surplus and sustained survival during CH₄ limitation in RTK17.1. Further differences between the strains are reflected in the regulatory profile, with the group 1d enzyme constitutively expressed in RTK17.1, but repressed in favour of the group 1h enzyme under oxic conditions in SolV (Mohammadi *et al.*, 2016). Overall, our findings suggest that SolV may fulfil a similar ecological niche to classical Knallgas bacteria (e.g. *Ralstonia eutropha*), switching between efficient heterotrophic and autotrophic growth dependent on energy availability. In contrast, H₂ metabolism appears to be more important for optimising growth and survival of RTK17.1 in response to energy and O₂ availability. In this regard, this organism's metabolism more closely resembles the mixotrophic strategy employed by *Mycobacterium smegmatis* (Berney *et al.*, 2014a; Greening *et al.*, 2014b). Future studies would benefit from side-by-side comparisons of these strains under equivalent conditions and further exploration of the physiological role and biochemical features of the group 3b and group 1h [NiFe]-hydrogenase enzymes.

More generally, we predict that H₂ oxidation is likely to support the majority of aerobic methanotrophic bacteria. Whereas only a few methanotrophic genera appear to be capable of heterotrophic generalism (Crombie and Murrell, 2014), genomic surveys (Peters *et al.*, 2015; Greening *et al.*, 2016) show that all 31 publicly available aerobic methanotrophic genomes harbour the capacity to metabolise H₂ (Supplementary Figure S3). As with SolV (Mohammadi *et al.*, 2016) and RTK17.1, most of the surveyed methanotroph genomes that were found to

encode for [NiFe]-hydrogenases have been shown to support aerobic respiration (groups 1d, 1h, 2a) and carbon fixation (groups 3b, 3d, 1h) (Greening *et al.*, 2016). Reports showing H₂ oxidation by several proteobacterial strains further support the classification of these enzymes as uptake hydrogenases (Chen and Yoch, 1987; Shah *et al.*, 1995; Hanczár *et al.*, 2002). H₂ is likely to be a particularly attractive energy source for methanotrophs because of its relative ubiquity when compared to C1 compounds. H₂ is biologically produced by diverse organisms across the three domains of life as a result of fermentation, photobiological processes and nitrogen fixation (Peters *et al.*, 2013; Schwartz *et al.*, 2013; Poudel *et al.*, 2016). Moreover, verrucomicrobial and proteobacterial methanotrophs harbouring the recently described group 1h [NiFe]-hydrogenases (Greening *et al.*, 2014a, 2015) may be capable of scavenging atmospheric H₂ to survive CH₄ starvation. Considering these observations in concert, it seems likely that hydrogenases in aerobic methanotrophs function to supplement the energetic and reductant requirements in environments where CH₄ and O₂ gases are limiting or variable. Thus, while methanotrophic bacteria are often pervasively viewed as C1 specialists, we propose that, *via* the utilisation of hydrogenases as part of a mixotrophic strategy, the niche space of methanotrophs is much broader than previously recognised. Combining heterotrophic and lithotrophic electron donors allows for a more flexible growth/survival strategy, with clear ecological benefits (Semrau *et al.*, 2011). We therefore predict that most methanotrophs will be able to use H₂ to support either autotrophic growth, mixotrophic growth or long-term persistence/maintenance.

Finally, our geochemical and microbial community diversity investigation of the Rotokawa geothermal field provides ecological support to our assertion that the metabolic flexibility of methanotrophs enhances niche expansion *in situ*. We provide genetic and biochemical evidence that methanotrophic Verrucomicrobia inhabiting the near-surface soils co-metabolised CH₄ and H₂ gas (Figure 1) and in doing so adopt a clear mixotrophic strategy. In acidic geothermal soils, we demonstrated that verrucomicrobial methanotrophs have grown to be the dominant bacterial taxon by simultaneously consuming gases primarily of geothermal and atmospheric origin, that is, CH₄ and H₂ as energy sources, respectively, CO₂ as a carbon source and O₂ as oxidant. Their metabolic flexibility also ensures resilience to temporal and spatial variations in the availability of key substrates allowing for CH₄ oxidation *via* the monooxygenase reaction. More generally, the prevalent narrative that methanotrophic bacteria are methylotrophic specialists is based on studies under optimal growth conditions and ignores the requirement of these organisms to adapt to environmental variations requiring a certain level of metabolic versatility. Intimate evolutionary and ecological interactions are likely to have

selected for a spectrum of different lifestyles across methanotrophic lineages, ranging from strict C1 specialism to broad substrate generalism, depending on the environment. However, based on the presence of [NiFe]-hydrogenase in numerous methanotroph genomes (Supplementary Figure S3) and the data presented here, we contend it is likely that most methanotrophs depend on H₂ oxidation to some extent to support either growth and/or survival. This finding has broad implications for future investigations on the ecology of methanotrophs as well as the biogeochemical cycles of H₂ and CH₄.

Conflict of Interest

The authors declare no conflict of interest.

Acknowledgements

This work was supported by Geothermal Resources of New Zealand (CRC, MBS, KMH and JFP) and Environmental Technologies (CRC, DG, BM and CC) research programmes at GNS Science and Scion, respectively. CRC was further supported by Genomes Canada, the Manitoba Research Innovation Fund (MIRF) and The Royal Society of New Zealand (Marsden Grant GNS1601). CG was supported by a CSIRO Office of the Chief Executive Postdoctoral Fellowship and an ARC DECRA Fellowship (DE170100310). KH was supported by a University of Otago Postgraduate Scholarship. ESB acknowledges support for this work from the NASA Astrobiology Institute (Grant #NNA15BB02A). Ngāti Tahu-Ngāti Whāoa are acknowledged as the *iwi* having *mana whenua* (customary rights) over the Rotokawa geothermal field and we thank the Runanga Trust for their support of our research. Relevant gene sequences (accession numbers KU509367-KU509352, KY820885) have been deposited into GenBank for archival storage.

Author contributions

CRC, CG and MBS conceived the study. CRC, MBS, CG, GC, KMH, KH, CC, DJG, RS, ESB and BM contributed to experimental design. CRC, BM, CC, DJG and MHK conducted bioreactor and wet lab experiments. CRC and MBS performed fieldwork, JFP determined microbial community structure, and CRC, MBS and CG conducted genomic analyses. CRC, KH and CG undertook cell respiratory analysis, and ESB and MBS performed the radioactive tracing experiments. CRC, CG, MBS, KH and GC wrote the manuscript.

References

- Amend JP, Shock EL. (2001). Energetics of overall metabolic reactions of thermophilic and hyperthermophilic Archaea and Bacteria. *FEMS Microbiol Rev* **25**: 175–243.
- Bédard C, Knowles R. (1989). Physiology, biochemistry, and specific inhibitors of CH₄, NH₄⁺, and CO oxidation

- by methanotrophs and nitrifiers. *Microbiol Rev* **53**: 68–84.
- Berney M, Greening C, Conrad R, Jacobs WR, Cook GM. (2014a). An obligately aerobic soil bacterium activates fermentative hydrogen production to survive reductive stress during hypoxia. *Proc Natl Acad Sci USA* **111**: 11479–11484.
- Berney M, Greening C, Hards K, Collins D, Cook GM. (2014b). Three different [NiFe] hydrogenases confer metabolic flexibility in the obligate aerobe *Mycobacterium smegmatis*. *Environ Microbiol* **16**: 318–330.
- Bradford MM. (1976). A rapid and sensitive method for the quantitation of microgram quantities of protein utilizing the principle of protein-dye binding. *Anal Biochem* **72**: 248–254.
- Cai Y, Zheng Y, Bodelier PLE, Conrad R, Jia Z. (2016). Conventional methanotrophs are responsible for atmospheric methane oxidation in paddy soils. *Nat Commun* **7**: 11728.
- Chen YP, Yoch DC. (1987). Regulation of two nickel-requiring (inducible and constitutive) hydrogenases and their coupling to nitrogenase in *Methylosinus trichosporium* OB3b. *J Bacteriol* **169**: 4778–4783.
- Cook GM, Greening C, Hards K, Berney M (2014). Energetics of pathogenic bacteria and opportunities for drug development. In: Poole RK (ed.). *Advances in Bacterial Pathogen Biology*, vol. 65. Elsevier Academic Press: Cambridge, MA, USA, pp 1–62.
- Crombie AT, Murrell JC. (2014). Trace-gas metabolic versatility of the facultative methanotroph *Methylocella silvestris*. *Nature* **510**: 148–151.
- Dedysh SN, Knief C, Dunfield PF. (2005). *Methylocella* species are facultatively methanotrophic. *J Bacteriol* **187**: 4665–4670.
- Dunfield PF, Yuryev A, Senin P, Smirnova AV, Stott MB, Hou S et al. (2007). Methane oxidation by an extremely acidophilic bacterium of the phylum Verrucomicrobia. *Nature* **450**: 879–882.
- Erikstad H-A, Birkeland N-K. (2015). Draft genome sequence of Candidatus *Methylocidiphilum kamchatkense* Strain Kam1, a thermoacidophilic methanotrophic Verrucomicrobium. *Genome Announc* **3**: e00065–15.
- Ettwig KF, Butler MK, Le Paslier D, Pelletier E, Mangenot S, Kuypers MMM et al. (2010). Nitrite-driven anaerobic methane oxidation by oxygenic bacteria. *Nature* **464**: 543–548.
- Euzéby JP. (1997). List of bacterial names with standing in nomenclature: a folder available on the Internet. *Int J Syst Evol Microbiol* **47**: 590–592.
- Fritsch J, Scheerer P, Frielingsdorf S, Kroschinsky S, Friedrich B, Lenz O et al. (2011). The crystal structure of an oxygen-tolerant hydrogenase uncovers a novel iron-sulphur centre. *Nature* **479**: 249–252.
- Golyshina OV. (2011). Environmental, biogeographic, and biochemical patterns of archaea of the family Ferroplasmaceae. *Appl Environ Microbiol* **77**: 5071–5078.
- Greening C, Berney M, Hards K, Cook GM, Conrad R. (2014a). A soil actinobacterium scavenges atmospheric H₂ using two membrane-associated, oxygen-dependent [NiFe] hydrogenases. *Proc Natl Acad Sci USA* **111**: 4257–4261.
- Greening C, Biswas A, Carere CR, Jackson CJ, Taylor MC, Stott MB et al. (2016). Genome and metagenome surveys of hydrogenase diversity indicate H₂ is a widely-utilised energy source for microbial growth and survival. *ISME J* **10**: 761–777.
- Greening C, Carere CR, Rushton-Green R, Harold LK, Hards K, Taylor MC et al. (2015). Persistence of the dominant soil phylum *Acidobacteria* by trace gas scavenging. *Proc Natl Acad Sci USA* **112**: 10497–10502.
- Greening C, Villas-Bôas SG, Robson JR, Berney M, Cook GM. (2014b). The growth and survival of *Mycobacterium smegmatis* is enhanced by co-metabolism of atmospheric H₂. *PLoS One* **9**: e103034.
- Hakemian AS, Rosenzweig AC. (2007). The biochemistry of methane oxidation. *Annu Rev Biochem* **76**: 223–241.
- Hanczár T, Csáki R, Bodrossy L, Murrell CJ, Kovács KL. (2002). Detection and localization of two hydrogenases in *Methylococcus capsulatus* (Bath) and their potential role in methane metabolism. *Arch Microbiol* **177**: 167–172.
- Hanson RS, Hanson TE. (1996). Methanotrophic bacteria. *Microbiol Rev* **60**: 439–471.
- Haroon MF, Hu S, Shi Y, Imelfort M, Keller J, Hugenholtz P et al. (2013). Anaerobic oxidation of methane coupled to nitrate reduction in a novel archaeal lineage. *Nature* **500**: 567–570.
- Ho A, Kerckhof F, Luke C, Reim A, Krause S, Boon N et al. (2013). Conceptualizing functional traits and ecological characteristics of methane-oxidizing bacteria as life strategies. *Environ Microbiol Rep* **5**: 335–345.
- Hou S, Makarova KS, Saw JHW, Senin P, Ly BV, Zhou Z et al. (2008). Complete genome sequence of the extremely acidophilic methanotroph isolate V4, *Methylocidiphilum infernum*, a representative of the bacterial phylum Verrucomicrobia. *Biol Direct* **3**: 1.
- Islam T, Jensen S, Reigstad LJ, Larsen Ø, Birkeland N-K. (2008). Methane oxidation at 55 C and pH 2 by a thermoacidophilic bacterium belonging to the Verrucomicrobia phylum. *Proc Natl Acad Sci USA* **105**: 300–304.
- Keltjens JT, Pol A, Reimann J, den Camp HJMO. (2014). PQQ-dependent methanol dehydrogenases: rare-earth elements make a difference. *Appl Microbiol Biotechnol* **98**: 6163–6183.
- Khadem AF, Pol A, Wieczorek A, Mohammadi SS, Francoijs K-J, Stunnenberg HG et al. (2011). Autotrophic methanotrophy in Verrucomicrobia: *Methylocidiphilum fumariolicum* SolV uses the Calvin-Benson-Bassham cycle for carbon dioxide fixation. *J Bacteriol* **193**: 4438–4446.
- Khadem AF, van Teeseling MCF, van Niftrik L, Jetten MSM, Op den Camp HJM, Pol A. (2012a). Genomic and physiological analysis of carbon storage in the verrucomicrobial methanotroph Ca. *Methylocidiphilum fumariolicum* SolV. *Front Microbiol* **3**: 345.
- Khadem AF, Wieczorek AS, Pol A, Vuilleumier S, Harhangi HR, Dunfield PF et al. (2012b). Draft genome sequence of the volcano-inhabiting thermoacidophilic methanotroph *Methylocidiphilum fumariolicum* strain SolV. *J Bacteriol* **194**: 3729–3730.
- Kirschke S, Bousquet P, Giais P, Sauniois M, Canadell JG, Dlugokencky EJ et al. (2013). Three decades of global methane sources and sinks. *Nat Geosci* **6**: 813–823.
- Knief C. (2015). Diversity and habitat preferences of cultivated and uncultivated aerobic methanotrophic bacteria evaluated based on *pmoA* as molecular marker. *Front Microbiol* **6**: 1346.

- Knief C, Lipski A, Dunfield PF. (2003). Diversity and activity of methanotrophic bacteria in different upland soils. *Appl Environ Microbiol* **69**: 6703–6714.
- Kolb S, Knief C, Dunfield PF, Conrad R. (2005). Abundance and activity of uncultured methanotrophic bacteria involved in the consumption of atmospheric methane in two forest soils. *Environ Microbiol* **7**: 1150–1161.
- Kwan P, McIntosh CL, Jennings DP, Hopkins RC, Chandrayan SK, Wu C-H et al. (2015). The [NiFe]-Hydrogenase of *Pyrococcus furiosus* exhibits a new type of oxygen tolerance. *J Am Chem Soc* **137**: 13556–13565.
- Lee KC, Stott MB, Dunfield PF, Huttenhower C, McDonald IR, Morgan XC. (2016). The *Chthonomonas calidirosea* genome is highly conserved across geographic locations and distinct chemical and microbial environments in New Zealand's Taupō Volcanic Zone. *Appl Environ Microbiol* **82**: 3572–3581.
- Maestrini S, Bechemin C, Grzebyk D, Hummert C. (2000). Phosphorus limitation might promote more toxin content in the marine invader dinoflagellate *Alexandrium minutum*. *Plankt Biol Ecol* **47**: 7–11.
- Mohammadi S, Pol A, van Alen TA, Jetten MSM, Op den Camp HJM. (2016). *Methylacidiphilum fumarolicum* SolV, a thermoacidophilic 'Knallgas' methanotroph with both an oxygen-sensitive and -insensitive hydrogenase. *ISME J*. **11**: 945–958.
- Op den Camp HJM, Islam T, Stott MB, Harhangi HR, Hynes A, Schouten S et al. (2009). Environmental, genomic and taxonomic perspectives on methanotrophic Verrucomicrobia. *Environ Microbiol Rep* **1**: 293–306.
- Oremland RS, Culbertson CW. (1992). Importance of methane-oxidizing bacteria in the methane budget as revealed by the use of a specific inhibitor. *Nature* **356**: 421–423.
- Peters JW, Boyd ES, D'Adamo S, Mulder DW, Therien J, Posewitz MC. (2013). Hydrogenases, nitrogenases, anoxia, and H₂ production in water-oxidizing phototrophs. In: *Algae for Biofuels and Energy*. Springer Netherlands, pp 37–75.
- Peters JW, Schut GJ, Boyd ES, Mulder DW, Shepard EM, Broderick JB et al. (2015). [FeFe]- and [NiFe]-hydrogenase diversity, mechanism, and maturation. *Biochim Biophys Acta* **1853**: 1350–1369.
- Pol A, Barends TRM, Dietl A, Khadem AF, Eygensteyn J, Jetten MSM et al. (2014). Rare earth metals are essential for methanotrophic life in volcanic mudpots. *Environ Microbiol* **16**: 255–264.
- Pol A, Heijmans K, Harhangi HR, Tedesco D, Jetten MSM, den Camp HJMO. (2007). Methanotrophy below pH 1 by a new Verrucomicrobia species. *Nature* **450**: 874–878.
- Poudel S, Tokmina-Lukaszewska M, Colman DR, Refai M, Schut GJ, King PW et al. (2016). Unification of [FeFe]-hydrogenases into three structural and functional groups. *Biochim Biophys Acta* **1860**: 1910–1921.
- Schwartz E, Fritsch J, Friedrich B. (2013). *H₂-Metabolizing Prokaryotes*. Springer Berlin Heidelberg: Berlin, Heidelberg.
- Semrau JD, DiSpirito AA, Vuilleumier S. (2011). Facultative methanotrophy: false leads, true results, and suggestions for future research. *FEMS Microbiol Lett* **323**: 1–12.
- Shah NN, Hanna ML, Jackson KJ, Taylor RT. (1995). Batch cultivation of *Methylosinus trichosporium* OB3B: IV. Production of hydrogen-driven soluble or particulate methane monooxygenase activity. *Biotechnol Bioeng* **45**: 229–238.
- Sharp CE, Smirnova AV, Graham JM, Stott MB, Khadka R, Moore TR et al. (2014). Distribution and diversity of Verrucomicrobia methanotrophs in geothermal and acidic environments. *Environ Microbiol* **16**: 1867–1878.
- Shomura Y, Yoon K-S, Nishihara H, Higuchi Y. (2011). Structural basis for a [4Fe-3S] cluster in the oxygen-tolerant membrane-bound [NiFe]-hydrogenase. *Nature* **479**: 253–256.
- Singh BK, Bardgett RD, Smith P, Reay DS. (2010). Microorganisms and climate change: terrestrial feedbacks and mitigation options. *Nat Rev Microbiol* **8**: 779–790.
- Søndergaard D, Pedersen CNS, Greening C. (2016). HydDB: a web tool for hydrogenase classification and analysis. *Sci Rep* **6**: 34212.
- Tavormina PL, Ussler W, Joye SB, Harrison BK, Orphan VJ. (2010). Distributions of putative aerobic methanotrophs in diverse pelagic marine environments. *ISME J* **4**: 700–710.
- van Teeseling MCF, Pol A, Harhangi HR, van der Zwart S, Jetten MSM, den Camp HJMO et al. (2014). Expanding the verrucomicrobial methanotrophic world: description of three novel species of *Methylacidimicrobium* gen. nov. *Appl Environ Microbiol* **80**: 6782–6791.
- Urschel MR, Kubo MD, Hoehler TM, Peters JW, Boyd ES. (2015). Carbon source preference in chemosynthetic hot spring communities. *Appl Environ Microbiol* **81**: 3834–3847.
- Weisburg WG, Barns SM, Pelletier DA, Lane DJ. (1991). 16S ribosomal DNA amplification for phylogenetic study. *J Bacteriol* **173**: 697–703.
- Yoon K-S, Ueda Y, Ishii M, Igarashi Y, Kodama T. (1996). NADH: ferredoxin reductase and NAD-reducing hydrogenase activities in *Hydrogenobacter thermophilus* strain TK-6. *FEMS Microbiol Lett* **139**: 139–142.



This work is licensed under a Creative Commons Attribution-NonCommercial-ShareAlike 4.0 International License. The images or other third party material in this article are included in the article's Creative Commons license, unless indicated otherwise in the credit line; if the material is not included under the Creative Commons license, users will need to obtain permission from the license holder to reproduce the material. To view a copy of this license, visit <http://creativecommons.org/licenses/by-nc-sa/4.0/>

© The Author(s) 2017

Supplementary Information accompanies this paper on The ISME Journal website (<http://www.nature.com/ismej>)