

Research Article

Isolation and Screening of Microorganisms for the Effective Pretreatment of Lignocellulosic Agricultural Wastes

Zichen Zhang,^{1,2} Aabid Manzoor Shah ,¹ Hassan Mohamed ,^{1,3} Nino Tsiklauri,⁴ and Yuanda Song ¹

¹Colin Ratledge Center for Microbial Lipids, School of Agriculture Engineering and Food Sciences, Shandong University of Technology, Shandong Zibo 255000, China

²Normal College, Jishou University, Jishou, 416000 Hunan, China

³Department of Botany and Microbiology, Faculty of Science, Al-Azhar University, Assiut 71524, Egypt

⁴Durmishidze Institute of Biochemistry and Biotechnology, Academy of Sciences of Georgia, 10 km Agmashenebeli Alley, 0159 Tbilisi, Georgia

Correspondence should be addressed to Yuanda Song; ysong@sdut.edu.cn

Received 18 March 2021; Revised 21 August 2021; Accepted 2 September 2021; Published 22 September 2021

Academic Editor: Yun Peng Chao

Copyright © 2021 Zichen Zhang et al. This is an open access article distributed under the Creative Commons Attribution License, which permits unrestricted use, distribution, and reproduction in any medium, provided the original work is properly cited.

Lignocellulosic waste is the most abundant biorenewable biomass on earth, and its hydrolysis releases highly valued reducing sugars. However, the presence of lignin in the biopolymeric structure makes it highly resistant to solubilization thereby hindering the hydrolysis of cellulose and hemicellulose. Microorganisms are known for their potential complex enzymes that play a dominant role in lignocellulose conversion. Therefore, the current study was designed to isolate and screen potential microorganisms for their selective delignification ability for the pretreatment of lignocellulosic biomass. An extensive isolation and screening procedure yielded 36 desired isolates (22 bacteria, 7 basidiomycete fungi, and 7 filamentous fungi). Submerged cultivation of these desired microorganisms revealed 4 bacteria and 10 fungi with potent lignocellulolytic enzyme activities. The potent isolates were identified as *Pleurotus*, *Trichoderma*, *Talaromyces*, *Bacillus*, and *Chryseobacterium* spp. confirmed by morphological and molecular identification. The efficiency of these strains was determined through enzyme activities, and the degraded substrates were analyzed through scanning electron microscopy (SEM) and X-ray diffraction (XRD). Among all isolated microbes, *Pleurotus* spp. were found to have high laccase activity. The cellulose-decomposing and selective delignification strains were subjected to solid-state fermentation (SSF). SSF of field waste corn stalks as a single-carbon source provides *Pleurotus* spp. better condition for the secretion of ligninolytic enzymes. These isolated ligninolytic enzymes producing microorganisms may be used for the effective pretreatment of lignocellulosic agricultural wastes for the production of high value-added natural products by fermentation.

1. Introduction

Lignocellulosic biomass represents an important carbon-neutral renewable resource for the production of bioenergy and biomaterials [1]. Huge reserves of lignocellulose are agroforestry residues, crops, agrowastes, grass, and algae. Crystallized cellulose and hemicellulose polymer matrix are packed by the highly polymerized phenolic lignin in lignocellulosic biomass that leads to the difficulties in digestibility and availability of cellulosic and hemicellulosic fractions. Lignocellulose represents a considerable source of alternative

energy that can minimize the rapid consumption of non-renewable fossil resources like petroleum, natural gas, coal, and minerals. The gradual conversion of substantial sectors of the global economy to a sustainable biobased economy, with bioenergy, biofuels, and biobased products as its main pillars, is a forward-looking approach [2]. Biofuels derived from lignocellulosic materials are crucial for biorefineries because they can replace the importance of petrochemistry in modern society. Plant polysaccharides-lignin composite can be used to produce the majority of these sustainable biorefinery products [3]. The structural configuration of

lignocellulose biomass is a complex that creates a reluctant nature for enzymatic hydrolysis [4, 5]. However, a pretreatment method is required to overcome the physical and chemical barriers present in the lignin-carbohydrate composite and make the majority of the plant cell wall components easily accessible for conversion into valuable products [6–8]. Because people are becoming more aware of their actions' impact on the environment, sustainability is gaining a lot of attention. To rethink and reinvent processes in such a way that materials and energy are used more effectively inside a closed-loop system, a paradigm shift is necessary [9]. Pretreatment is a critical step in establishing an economically viable biorefinery. A successful pretreatment method must result in partial or total separation of the lignocellulosic components, increasing cellulose accessibility to enzymatic hydrolysis and releasing the least inhibitory compounds for subsequent steps of enzymatic hydrolysis and fermentation. Each pretreatment technology has a different specificity against carbohydrates and lignin and may or may not be effective for different types of biomass [3]. Various pretreatment procedures for cellulosic resources have been developed, such as chemical processes (acid/base (neutral) reactions, reduction reactions, oxidation reactions), and thermal treatments (pyrolysis/gasification) [10]. To modify lignocellulose, it is of great interest to replace organic solvents with environmentally safe biological treatments that have opened up new options for biorefineries and economic reasons.

Biological pretreatment is a promising technique as there is no inhibitor formation during the process, ecofriendly, and low-cost procedure [11, 12]. Biological pretreatment methods are usually performed by microorganisms, the usage of microbial consortium and fungus could produce potent ligninolytic and cellulolytic enzymes [13, 14]. Microorganisms have evolved the ability to change and access lignocellulosic biomass. Exploiting this capability provides a natural, low-input method of preparing biomass for bio-fuels operations. Natural modification and degradation, in particular of the lignin component, can minimize the severity needs of future thermochemical pretreatment stages. The type of microorganism plays a very important role in the efficiency of biological delignification and makes a positive contribution to environmental protection [15, 16]. White-rot fungi were considered to be the most efficient microorganisms for lignin decomposition in nature, which represent that a low-cost process been applied to ecofriendly alternative pretreatment or copretreatment methods [17–19]. Some soil filamentous fungus-like *Mycelia sterilia* could decompose the lignin of oat straw in a comparable degree with white-rot fungi [20]. Different from fungi, bacterial strains degrade lignocellulose in the way by tunneling into the interior cell walls or making stripy erosions in the microfibrils of cellulose and have extensive interactions for lignin degradation, which show potential to processing lignocellulosic waste biomass. Bacterial ligninolytic enzymes are actively involved in the degradation of phenols, diamines, aromatic amines, and other xenobiotic molecules [21, 22].

Thus, microbes are crucial in delignification, and further research is needed to find new, efficient microorganisms.

Therefore, the current study's goal was to isolate, screen, and identify effective lignocellulolytic enzyme-producing microbes from diverse sources.

2. Materials and Methods

2.1. Culture Media and Conditions. For isolation, storage, and maintenance microbial culture, the following culture media were used in this study: (1) potato dextrose agar (PDA) medium (for fungi): obtained from Qingdao Hope Bio-Technology Co., Ltd. and (2) Luria-Bertani (LB) agar medium (for bacteria): purchased from Beijin Aoboxing Bio-Tech Co., Ltd. Differential medium: (1) 0.04% guaiacol-added maintenance medium [23]; (2) 0.01% aniline blue-added maintenance medium [24]; and (3) congo red-CMC medium: sodium carboxymethyl cellulose (CMC-Na) 2 g/L, KH_2PO_4 1 g/L, $\text{MgSO}_4 \cdot 7\text{H}_2\text{O}$ 0.5 g/L, tryptone 1 g/L, Congo-Red 0.4 g/L, agar 20 g/L, pH 7 [25]. Liquid medium for enzyme assay: (1) basic liquid medium: LB/PDB medium; (2) 1% cellulose (CMC-Na/Avicel) added Mandels & Andreotti medium: KH_2PO_4 2 g/L, $(\text{NH}_4)_2 \text{SO}_4$ 1.4 g/L, $\text{MgSO}_4 \cdot 7\text{H}_2\text{O}$ 0.3 g/L, CaCl_2 0.3 g/L, $\text{FeSO}_4 \cdot 7\text{H}_2\text{O}$ 5.0 mg/L, $\text{MnSO}_4 \cdot \text{H}_2\text{O}$ 1.6 mg/L, $\text{ZnSO}_4 \cdot 7\text{H}_2\text{O}$ 1.4 mg/L, CoCl_2 2 mg/L, peptone 1 g/L, yeast-extract 0.05 g/L, Tween-80 2 mL/L [26]. Medium for solid-state fermentation: 10 g corn stalks (20 mesh), 50 mL Mandels & Andreotti medium.

2.2. Sampling and Isolation Procedures. Soil collected from forests, surface humus, straws, wood, fresh herbivore manure, and edible mushrooms were used for the isolation of the potential microbes. Environmental samples such as soils, hummus, and wood samples were collected from the Shandong University of Technology; straws were collected from nearby fields of Shandong and neighboring provinces. Excrement of farm-raised gray rabbits from farms was collected as herbivore manure samples. For isolation of bacteria and fungi, the environmental samples were mixed with sterile distilled physiological saline at room temperature for 1 h with shaking at 180 rpm, and the water extract supernatant was serially diluted till 10^{-7} dilutions. 100 μL aliquots from the dilution 10^{-4} to 10^{-7} were taken and spread onto plates of different types of isolation medium. All plates were incubated at 28 and 37°C for fungi and bacteria, respectively.

Macrofungi isolated from edible mushroom-stick and internal tissues were cut from primordium hypha blocks and transferred onto a PDA medium for further isolation. Microbial cultures of all above were monitored and purified in time by stepping inoculation/streaking and disc transfer method. Pure strains based on colony morphology were stored on a maintenance medium at 4°C for further experimentations.

2.3. Screening of Potential Isolates. The guaiacol and aniline blue indicators were used and supplemented in the differential medium for screening laccase-producing, lignin degradation-related peroxidases-producing (lignin peroxidases and manganese-dependent peroxidase) microbes, and congo red-CMC medium aid in detecting cellulases production by these microbes. Organisms with brown oxidation in

0.04% guaiacol and/or discoloration in 0.01% aniline blue were selected as potential strains. Discoloration of congo red reflects the cellulase activity of the selected strains. In the differential process, activated bacteria and fresh newly harvested spores of filamentous fungi were inoculated on a differential medium and basidiomycete fungi transfer onto the differential medium by 5 mm mycelial disk inoculation. Bacterium and fungus plates in screening were, respectively, cultivated at 37°C and 28°C and observed for the development of colored/decolorization reaction and were assessed on daily basis.

2.4. Extracellular Enzyme Assays. Positive strains of guaiacol brown oxidation and aniline blue decolorization were selected for enzyme activity detection. Bacteria were inoculated at 2% and grown at 37°C for 48 h at 180 rpm, and the fungi were inoculated with 10^{-6} mold spores/mL or 5 mm hyphae block per 5 mL (mushrooms or fungus difficulty in collecting spores) at 28°C for 7 days with shaking at 180 rpm. Cultures were filtrated through nylon fabric and then centrifuged at $10,000\times g$ at 4°C for 10 min. The enzyme activities of all resultant supernatants were estimated. Laccase, lignin peroxidases, manganese-dependent peroxidase, CMCase, avicelase, and β -D-glucosidase activities were analyzed of all selected isolates. Laccase (Lac) activity was determined by oxidation of 2,2'-azino-bis-(3-ethylbenzthiazoline-6-sulfonate) (ABTS) method [27].

Assays were performed in a 3 mL mixture containing 2.7 mL 50 mM sodium acetate buffer (pH 5.0), 15 mM ABTS 200 μ L, and suitably diluted crude enzyme 100 μ L. The oxidation of ABTS was performed at room temperature by monitoring spectrophotometrically the change in absorbance at 420 nm. One unit of enzyme activity is defined as the amount of enzyme required to oxidize 1 μ mol ABTS/min using an ϵ_{420} value for oxidized ABTS of molar absorption coefficients $36,000\text{ M}^{-1}\text{ cm}^{-1}$.

MnP activity was measured by the oxidation of Mn^{2+} [28]. 3 mL reaction mixture consists of 50 mM sodium lactate buffer (pH 4.5) 2.7 mL, 1.6 mM MnSO_4 100 μ L, suitably diluted crude enzyme 100 μ L, and activator 1.6 mM H_2O_2 100 μ L; the reaction is initiated at room temperature by the addition of H_2O_2 and the increase in absorbance measured at 240 nm. One unit of enzyme activity is defined as the amount of enzyme required to form 1 μ mol of Mn^{3+} /min using an ϵ_{240} value for Mn^{3+} of molar absorption coefficients $6,500\text{ M}^{-1}\text{ cm}^{-1}$.

Lignin peroxidase (LiP) activity was measured as described by Tien and Kirk [29]. LiP activity was determined at room temperature in a 3 mL reaction mixture containing 2.24 mL 50 mM sodium tartrate buffer (pH 2.5), 10 mM veratryl alcohol 600 μ L, suitably diluted crude enzyme 100 μ L, and activator 20 mM H_2O_2 60 μ L. The reaction is initiated by the addition of H_2O_2 and the increase in absorbance measured at 310 nm. One unit of enzyme activity is defined as the amount of enzyme required to form 1 μ mol of veratraldehyde/min using an ϵ_{310} value for veratraldehyde of molar absorption coefficients $9,300\text{ M}^{-1}\text{ cm}^{-1}$.

CMCase reaction mixture containing 1 mL of appropriately diluted enzyme and 3 mL of 1% CMC-Na in 50 mM

citric acid buffer (pH 4.8) was incubated at 50°C in water bath for 30 min and terminated by dinitrosalicylic acid (DNS) 3 mL, and after 5 min, was diluted with 25 mL dH_2O [30]. Reducing sugar levels in the supernatant was determined at 540 nm [31]. Avicelase reaction mixture containing 1 mL crude enzyme and 3 mL of 1% avicel in 50 mM citric acid buffer (pH 4.8) was incubated at 50°C for 1 h and measured with the same method of CMCase [31]. CMCase and avicelase were calculated as μ mol reducing sugar released (U/g). The β -D-glucosidase activity was assayed with modified method of Kovács; the assay mixture contained 1 mL 5 mM 4-nitrophenyl- β -D-glucopyranoside (pNPG) in 0.05 M sodium acetate buffer (pH 6.0) and 100 μ L appropriately diluted enzyme solution; the mixture was incubated at 50°C for 10 min, terminated by 2 mL 1 M Na_2CO_3 , and diluted with 10 mL with dH_2O ; the liberated p-nitrophenol (p-NP) level was determined at 405 nm [32]. The β -D-glucosidase activity was calculated as μ mol p-NP released per minute per g of compost (U/g). All assays above were performed in triplicate, and the data presented in the tables correspond to mean values with a standard errorless than 10%.

2.5. Selection and Identification of Isolates. According to the result of extracellular enzyme activity assays, the promising strains were selected for colony morphology, microscopic visualizations, and molecular identification followed by solid-state fermentation. The 16S rRNA genes of bacteria were amplified by PCR using primers 27F and 1492R and ITS genes of fungi using primers ITS-1F and ITS-4R for sequence analysis. Bacterial isolates were grown in the LB medium at 37°C for 24 h. The cultures were centrifuged at $10,000\times g$ for 1 min, and the supernatant was removed. DNA extraction was performed using a TIANamp Bacteria DNA Kit (Tiangen Biotech Corporation, Beijing, China) according to the manufacturer's instructions. Fungal isolates were grown in the PDA medium at 28°C for 5-7 days, harvested hyphae collected by centrifugation through the suction filter, and rinsed with distilled water. DNA extraction was performed using a DNAquick Plant System (Tiangen Biotech Corporation, Beijing, China) according to the manufacturer's instructions. The amplified products were sent to the Sangon Biotechnology Co. Ltd., China, for sequencing. All the obtained sequences were deposited in the NCBI database with given accession numbers. The sequences were then aligned and compared by BLASTN available in (NCBI) GenBank to identify these closest phylogenetic relatives by sequence similarity searches. Molecular Evolutionary Genetics Analysis (MEGA 10) software was used to conduct sequence alignment and to help identify members of gene families.

2.6. Solid-State Fermentation (SSF) and Analysis. The solid-state fermentation was performed using corn stalks as agro-waste substrates. Bacteria and fungi were grown in the same way as submerging conditions; potential microbes were inoculated with 10 mL/flask and incubated for 30 days at 37°C (bacteria) and 28°C (fungi) under dark conditions. Culture biomass was collected, and their cell dry weight and

enzyme activities were measured. 15 mL sodium phosphate buffer (pH 7.0) per gram of the wet substrate was added to 100 mL flasks for the enzyme assay analysis; above 80% wet substrate was dried at 45°C to reserved fermented sample for analysis of physical changes.

2.7. Scanning Electron Microscopy (SEM). Scanning electron micrograph was used to observe and analyze physical changes by different types of tested microbes in the treated substrates. Images of the substrates were taken using a Thermo Scientific Apreo scanning electron microscope (SEM) (Quanta 250 FEG, FEI Co., Salt Lake, UT, USA). The dried samples to be analyzed were coated with a thin layer of gold for 30 sec, using SEM ion sputtering device and affixed to the sample holder. The acceleration voltage was 200 V-30 kV, and the current passed was 15 mA.

2.8. X-Ray Diffraction (XRD) Characterization. The changes in crystallinity of the samples before and after SSF were estimated by the XRD analysis of the substrates. Scanning was performed on a Bruker AXS X-ray diffractometer instrument set at 40 kV, 30 mA, The wavelength of the Cu/K α radiation source was 0.15418 nm, and the 2θ scan range was from 3° to 45° with a step size of 0.02°/min. Crystallinity index (CrI%) was calculated according to the following Segal proposed equation: $CrI\% = (I_{002} - I_{am})/I_{002} \times 100\%$, where CrI represents the relative degree of crystallinity (%), I_{002} is the intensity of crystal plane at the 002 peaks (at $2\theta = 22^\circ$), and I_{am} is the intensity at $2\theta = 18^\circ$. The I_{002} peak corresponds to the crystalline fraction, and the I_{am} peak corresponds to the amorphous fraction [33].

3. Results and Discussion

3.1. Isolation and Preliminary Screening of Lignin-Degrading Strains. The present study is an effort towards an exploration of potent microbes for their selective delignification activity. While in our explorations, we have isolated and purified 105 morphologically different isolates from various samples. All the isolated strains were subjected to preliminary screening. Based on the formation of a clear visible zone around the colony on the solid media supplemented with the suitable specific indicators which demonstrated that isolates have ligninolytic or cellulolytic activity. Laccase-positive strains were identified by dark brown oxidation of guaiacol, and LiP/MnP active strains were identified by the decolorization of aniline blue. From the results of the preliminary screening process, 36 isolates showed a visually positive result in the guaiacol oxidation or aniline blue decolorization. Based on the morphological characteristics, these ligninolytic active isolates belonged to bacteria, basidiomycete fungi, and filamentous fungi present in Table 1. During our screening process, 15 bacteria, 7 basidiomycete fungi, and 5 lower fungi tested positive for laccase activity, and all these isolates were also positive for peroxidases activity. Rich supplements of specific substrates like phenolic substrates indicate secretion of ligninolytic enzymes was proven in other studies [34–36]. All the ligninolytic enzyme-positive strains tested for cellulases activity by congo red-CMC produced variable

zones (CMC clearance) around their colony, and the decolorized zones of congo red-CMC demonstrated the ability to degrade CMC [37]. Cellulases play a crucial role in degrading the lignocellulosic biomass to release fermentable sugars. There is a requirement for enzymatic saccharification of natural lignocellulose, and when working with lignocellulosic substrates, the utilization of cellulose-degrading enzymes becomes critical [38]. Fungi contain most of the known wood-rot microorganisms. The ability of wood-decaying fungi, particularly white-rot and brown-rot fungi (WRFs and BRFs), to efficiently alter, degrade, and depolymerize important plant cell wall components has been extensively researched [39, 40]. In the present study, it was observed that fungi presented better levels of ligninolytic and cellulolytic activity than most bacteria; they were therefore considered key candidates. Among them, the highest ligninolytic scoring was demonstrated by 7 white-rot basidiomycete isolates that showed strong oxidation of guaiacol. Compared with basidiomycete isolates, the other filamentous isolates perform better activities on cellulases rather than ligninases, and almost all the bacteria isolates show limited efficiency on oxidation of guaiacol and aniline blue. It is well known that the degradation of lignin by bacteria are least effective than fungi, but the exploration of bacteria species for lignin depolymerization potentials are considered significant to industrialization of the biocatalytic/extracellular enzyme process [41].

3.2. Extracellular Enzyme Profiling. Different types of hydrolytic and oxidative enzymes were detected in cultures for lignocellulolytic enzyme production. The selected isolates were evaluated for extracellular enzyme profiling including laccase, LiP, MnP, CMCase, avicelase, and β -D-glucosidase activities in the liquid culture medium. Secretion of the extracellular enzyme plays a vital role in the lignocellulosic decaying process of biomass depolymerization and/or functionalization [42].

The isolates exhibited different levels of enzyme activity, and the enzyme activity profile of bacteria and fungi was, respectively, presented in Tables 2 and 3. All the tested isolates hardly adapt to CMC/MCC media as a single-carbon source, which resulted in quantifiable ligninolytic and cellulolytic activity in some cultures. To those isolates for which CMC/MCC was too difficult to hydrolyze and utilize in these conditions, it was hard to create an effective adjustment strategy on extracellular enzymes in nutritional deficiencies, as complex molecules are not easily utilized compared to simple monosaccharides like glucose [43]. The not detectable enzymatic activity of both bacteria and fungi has been not shown in Tables 2 and 3.

As shown in Table 2, bacterial strains A5, A10, A11, S2G3, S1P2, B0G2, and C5L2 showed Lac activity and A3, A5, A10, and A11 showed MnP activity, whereas, LiP activity is detected in most bacteria. The entire three major ligninolytic enzyme activities were recorded in the bacterial isolates A5, A10, and A11. Bacteria Lac level was not as good as fungi; however, the strains A5, A10, and S1P1 showed strong LiP activity of 18.28, 13.98, and 23.66 U/L, respectively, which was better than fungi. Bacterium coded as A5

TABLE 1: The preliminary screening results of selected lignin-degrading isolates.

Strain code	Origin of sample(s)	Guaiacol	Aniline blue	Congo red-CMC	
Bacteria	A1	Soil (Shandong University of Technology)	-	+/-	++
	A3	Soil (Shandong University of Technology)	-	+/-	++
	A5	Soil (Shandong University of Technology)	+	+/-	++
	A6	Soil (Shandong University of Technology)	+/-	+/-	++
	A7	Soil (Shandong University of Technology)	-	+/-	++
	A8	Soil (Shandong University of Technology)	-	+/-	++
	A9	Soil (Shandong University of Technology)	-	+/-	++
	A10	Soil (Shandong University of Technology)	+/-	+/-	++
	A11	Soil (Shandong University of Technology)	+/-	+/-	+
	S2L2	Forest soil (Shandong University of Technology)	+/-	+/-	+
	S2L3	Forest soil (Shandong University of Technology)	+/-	+/-	++
	S0G1	Forest soil (Shandong University of Technology)	+	+/-	++
	S0G2	Forest soil (Shandong University of Technology)	-	+/-	++
	S2G2	Forest soil (Shandong University of Technology)	-	+/-	++
	S2G3	Forest soil (Shandong University of Technology)	+	+/-	++
	S1P2	Forest soil (Shandong University of Technology)	+	+/-	++
	M3L1	Forest humus (Shandong University of Technology)	+/-	+/-	+
	M3L2	Forest humus (Shandong University of Technology)	+/-	+/-	+
	M3L3	Forest humus (Shandong University of Technology)	+/-	+/-	+
	M3L4	Forest humus (Shandong University of Technology)	+/-	+/-	+
B0G2	Decayed wood (Shandong University of Technology)	+	+/-	+	
C5L2	Corn stalks (Lianyungang, Jiangsu Province)	+	+/-	+	
Basidiomycete Fungi	YH	Edible mushroom-stick (Linyi, Shandong Province)	+++	+	+/-
	HJ	Edible mushroom-stick (Linyi, Shandong Province)	+++	++	+/-
	HP	Edible mushroom-stick (Linyi, Shandong Province)	+++	++	+/-
	RP	Edible mushroom-stick (Linyi, Shandong Province)	+++	++	+/-
	BP	Edible mushroom-stick (Linyi, Shandong Province)	+++	++	+/-
	XB	Edible mushroom-stick (Linyi, Shandong Province)	+++	+	+/-
	XZ	Edible mushroom-stick (Linyi, Shandong Province)	+++	++	+/-
Filamentous fungi	B0P1	Decayed wood (Shandong University of Technology)	+/-	++	+++
	B1P1	Decayed wood (Shandong University of Technology)	-	++	+++
	C0P2	Corn stalks (Lianyungang, Jiangsu Province)	+/-	++	+++
	C0G2	Corn stalks (Lianyungang, Jiangsu Province)	+/-	++	+++
	C4P1	Corn stalks (Lianyungang, Jiangsu Province)	++	++	+++
	C5P1	Corn stalks (Lianyungang, Jiangsu Province)	++	++	+++
	R0P2	Gray rabbit manure (Zibo, Shandong Province)	-	++	+++

Note: screening of microbes was performed as described in Materials and Methods. Differential media of guaiacol, aniline blue, and congo red used for screening; Scoring: -: invisible; +/-: positive but barely visible; +: pale to moderately pale color; ++: moderately pale to strong color; +++: moderately strong to intense color.

contains both LiP and Lac level that was higher than the previously reported bacteria *B. subtilis* E3 (1.48×10^{-5} U/mL), which was suggested to be a cheap source of LiP for large-scale commercial production [44].

CMC/MMC are not good carbon sources for fungal isolates and do not grow well in these media. In the MMC medium, fungal hyphae were almost invisible and enzymes were undetectable. CMC also rendered some ligninolytic enzymes undetectable or inhibition of some cellulase. From Table 3, it was observed that fungi appeared to be a good

producer of Lac and cellulases than bacteria in the basic PDB medium. Basidiomycete fungi showed maximum ligninolytic and cellulolytic enzyme level. From the results of Lac and MnP activity of basidiomycete isolates, it was observed that isolates RP, BP, and XZ showed activities of Lac, LiP, and MnP. The Lac is the most widely used ligninolytic enzyme, which can be varied applied to lignocellulose biorefineries, chemical modification, waste treatment, and stain decoloration [45–47]. The Lac activity of basidiomycete fungi isolates ranged from 61.11 to 802.78 U/L, and isolate

TABLE 2: Enzymatic activities in cultures of bacterial isolates.

Bacterial strain(s)	Lac (U/L)	MnP (U/L)	LiP (U/L)	CMCase (U/L)	β -Glucosidase (U/L)	Avicelase (U/L)
A1	–	–	2.15	53.54	–	–
A3	–	3.42	–	9.22	–	7.69
A5	0.49	8.21	18.28	194.31	–	19.3
A10	0.29	5.47	13.98	210.86	–	24.82
A11	0.36	7.52	6.99	13.4	3.06	21.87
S2L2	–	–	2.15	24.43	–	15.59
S2L3	–	–	3.76	29.48	–	–
S2G3	0.14	–	2.15	37.94	4.21	–
S1P2	0.44	–	23.66	6.46	32.11	46.41
M3L2	–	–	2.15	54.87	10.79	17.68
M3L4	–	–	2.69	62.29	–	13.88
B0G2	0.15	–	1.08	128.2	14.94	20.25
C5L2	0.14	–	4.84	25.01	5.35	21.96

Note: –: not detectable under employed assay conditions.

TABLE 3: Enzymatic activities in cultures of fungal isolates.

Fungal strain(s)	Lac (U/L)		MnP (U/L)		LiP (U/L)		CMCase (U/L)		β -Glucosidase (U/L)		Avicelase (U/L)	
	PDB	CMC	PDB	CMC	PDB	CMC	PDB	CMC	PDB	CMC	PDB	CMC
YH	61.11	–	19.83	–	–	–	168.25	6.36	51.91	24.73	62.10	27.29
HJ	802.78	–	5.81	–	–	–	92.16	5.32	120.02	22.44	81.88	52.59
HP	452.78	–	1.37	–	–	–	240.53	7.69	62.21	23.01	87.59	42.32
RP	288.89	–	5.13	–	0.72	–	–	4.94	41.9	27.01	67.62	23.1
BP	447.22	–	4.79	–	0.72	–	134	4.94	41.04	10.13	61.15	42.13
XB	261.11	–	2.05	–	–	–	–	16.25	178.97	1.55	67.62	42.89
XZ	537.5	–	5.81	–	1.25	–	84.55	5.89	168.1	104.28	55.82	65.9
B0P1	0.56	–	–	–	–	–	17.4	7.03	457.41	184.12	49.54	65.71
B1P1	0.28	–	–	–	–	–	5.22	8.17	245.65	179.54	71.99	46.88
C0P2	3.19	–	–	–	–	–	56.01	22.34	209.3	205.3	21.96	84.36
C0G2	3.33	–	–	–	–	–	89.11	15.78	234.2	145.2	19.49	48.02
C4P1	5.38	–	–	–	–	–	17.4	60.48	131.75	431.66	47.45	63.62
C5P1	5.52	–	–	–	–	–	24.82	52.87	263.1	343.23	40.22	16.45
R0P2	6.67	–	–	–	–	–	232.92	16.16	2.12	46.76	149.22	59.25

Note: –: not detectable under employed assay conditions.

HJ gets the highest activity. Lac reaction of these isolates is more active and sensitive than other extracellular enzymes, which is considered a potential value for the enzymatic project. The enzyme MnP are the important peroxidases, which play an important role during the initial stages of lignin degradation [48]. YH presents the best MnP activity of 19.83 U/L, which is a potential source for MnP production and phenolic compound oxidization.

The cellulases of fungi were not induced by cellulose as the only carbon source in cultivation media. It was concluded that there is strong growth inhibition in cellulose as a single-carbon condition, and avicel is not suitable for the growth and enzyme secretion of detected isolates. The difference of basidiomycetes between mediums indicating the ligninolytic performance is diverse with different substrates that the secretion of extracellular enzymes can be controlled

with cultivated design and regulation in industrial sectors utilization [49]. CMCase, avicelase, and β -glucosidase assays were performed to understand the cellulolytic activity of these isolates; these cellulase activity levels reflect the ability of the isolates to be actively involved in the saccharification process of the delignified or cellulose substrates [50]. All fungi showed significant three major cellulase activities; some isolates observed cellulase induction of CMC cultivation. On the CMC medium, CMCase activities of B1P1, C4P1, and C5P1 slightly increased, and RP and XB perform detectable CMCase active. With CMC cultivation, β -glucosidase of C4P1 increased from 131.75 to 431.66 U/L, C5P1 increased from 263.1 to 343.23 U/L, β -glucosidase of R0P1 and avicelase of fungus XZ, B0P1, C0P2, C0G2, and C4P1 have small improvements. Compared with basidiomycetes, filamentous fungi have good secretion of cellulases but lower

TABLE 4: Molecular identification of the cellulolytic selected isolates.

Code	Strain	Accession number	Strain of closest match
A5	<i>B. subtilis</i>	MW276093	<i>B. subtilis</i> JCM 1465
A10	<i>B. subtilis</i>	MW276095	<i>B. subtilis</i> JCM 1465
A11	<i>B. licheniformis</i>	MW276114	<i>B. licheniformis</i> GD2b
S1P1	<i>C. gambrini</i>	MW276097	<i>C. gambrini</i> 5-1St1a
YH	<i>P. citrinopileatus</i>	MW276134	<i>P. citrinopileatus</i> P54
HJ	<i>P. ostreatus</i>	MW276129	<i>P. ostreatus</i> CC389
HP	<i>P. ostreatus</i>	MW276128	<i>P. ostreatus</i> DMRP-20
RP	<i>P. djamor</i>	MW284388	<i>P. djamor</i> LE-BIN 3279
BP	<i>P. florida</i>	MW281565	<i>P. florida</i> Zaoqiu508
XB	<i>P. eryngii</i>	MW276132	<i>P. eryngii</i> DMRP-21
XZ	<i>P. pulmonarius</i>	MW276131	<i>P. pulmonarius</i> P51
C4P1	<i>T. atroviride</i>	MW276137	<i>T. atroviride</i> OUCMBI110146
C5P1	<i>T. atroviride</i>	MW276140	<i>T. atroviride</i> OUCMBI110146
R0P2	<i>T. funiculosus</i>	MW276141	<i>T. funiculosus</i> X33

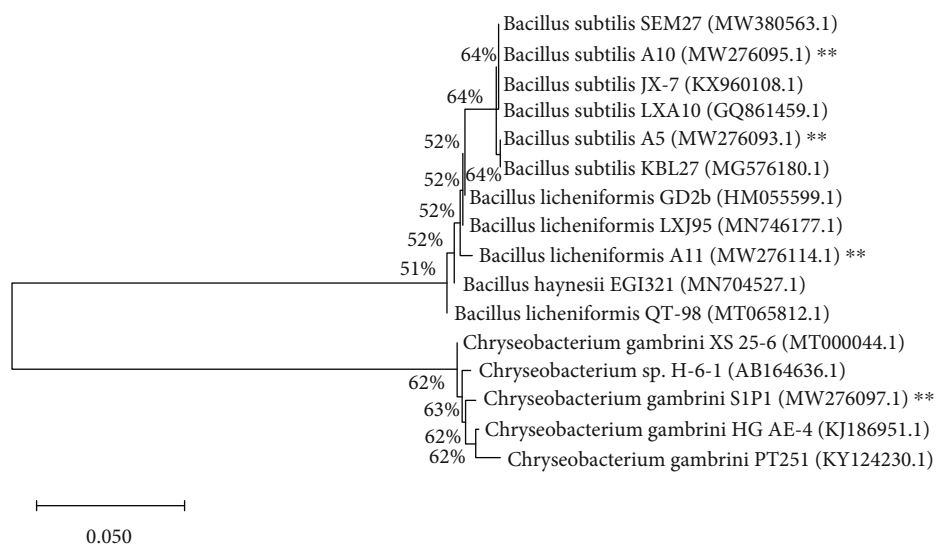


FIGURE 1: The neighbour-joining (NJ) phylogenetic tree based on 16S rRNA gene sequences of selected bacterial strains YH, HJ, HP, RP, BP, XB, and XZ with closely related strains accessed from the GenBank using BLASTN. These sequences were aligned using ClustalW. The NJ method was constructed using MEGA-X version 10.1.8. **Tested bacterial strains.

ligninolytic activity, and most of them more adaptable to the CMC medium.

Due to the lack of condition and inducer optimization study, the ligninolytic enzyme activities of these screened isolates are comparatively far from strains of deep research. Take Lac, for example, Zhang et al. report that enhanced *Trametes hirsuta* SSM-3 produce Lac 31777 U/L [51]. Rezaei et al. reported CuSO₄ induced 4.8 U/mL Lac from *A. elongatus* [52]. Afreen et al. induce *Arthrospira maxima* with guaiacol on best carbon and nitrogen condition and obtained 54.671 U/mL maximum activity [53]. The enzyme activities of isolates reported in our study were much better than the same reported in strains like *Penicillium pinophilum* MCC 1049 (28.2 U/L) [54], *Stenotrophomonas maltophilia* BIJ16 (208.23 U/L), and *Citrobacter freundii* LLJ16 (205.50 U/L)

[55]. These isolates could be designated as the potential lignin degrader based on the enzyme quantification.

3.3. Molecular Identification of Microbial Strains. The cultural characteristics and morphological features results revealed that primary screened 36 isolates were identified as 22 bacteria, 7 basidiomycete fungi, and 7 other filamentous fungi. Among them, 4 bacteria and 10 fungi isolates were selected as potential candidates with high lignocellulose degradating activity, and they were further identified based on 16S rDNA and ITS sequences, colony morphology, and microscopic visualizations as shown in Table 4. Based on the 16S rDNA sequence, bacterial isolates were classified into genus *Bacillus* and *Chryseobacterium*, identified as members *B. subtilis*, *B. licheniformis*, and *Chryseobacterium*

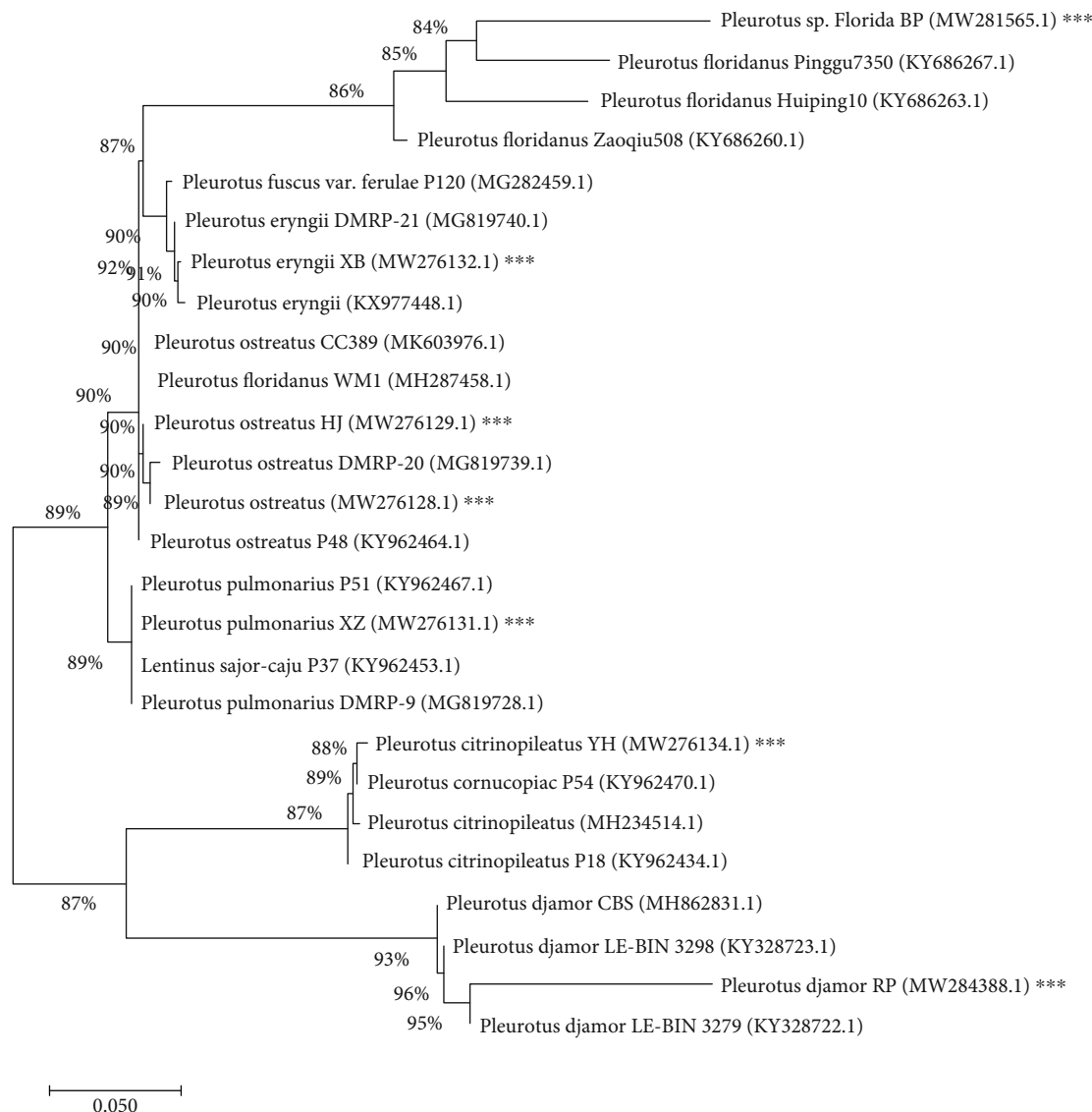


FIGURE 2: The neighbour-joining (NJ) phylogenetic tree based on 18S rRNA gene sequences of selected fungal strains A5, A10, A11, and S1P1 with closely related strains accessed from the GenBank using BLASTN (<http://www.ncbi.nlm.nih.gov/blast/>). These sequences were aligned using ClustalW. The NJ method was constructed using MEGA-X (Molecular Evolutionary Genetics Analysis; version 10.1.8). ***Tested bacterial strains.

gambrii. *Bacillus* spp. are the most dominant bacterium used in the enzyme industry because of its ability to produce and secrete a rich amount of extracellular enzymes [56]. *Bacillus* such as *B. aryabhattai* and *B. altitudinis* were reported for cellulolytic activity studies [57, 58], but the bacterial laccases are relatively newer and their characterization followed to that of their counterparts in fungi. Laccase activities of *B. subtilis* and *B. licheniformis* were previously studied [59, 60]. Selected 3 filamentous fungi that were identified belong to *T. atroviride* and *Talaromyces funiculosus*. *Trichoderma* spp. are most studied regarding lignocellulosic degradation, and *T. atroviride* have been studied for the ligninolytic use on agrowastes composting [61]. There are few relevant studies of *Talaromyces*. In this study, basidiomycete isolates were identified as *P. citrinopileatus*, *P. ostrea-*

tus, *P. djamor*, *P. florida*, *P. eryngii*, and *P. pulmonarius*. Most of the ligninolytic enzymes reported thus far are of fungal origin; in white-rot fungi, *Pleurotus* spp. are well known as fast-growing, and the biosafety has been studied extensively [62, 63].

The phylogenetic tree also indicated the closest similarity to selected strains. The bacterial strains showed 99-100% sequence similarity with *B. subtilis* strain JCM 1465, *B. licheniformis* GD2b, and *C. gambrii* 5-1St1a, whereas the highly degradation activity selected fungal isolates showed 98-100% sequence similarity with *P. citrinopileatus* P54, *P. ostreatus* isolate CC389, and DMRP-20 and *P. djamor* LE-BIN 3279, *P. florida* Zaoqiu 508, *P. eryngii* DMRP-21, and *P. pulmonarius* P51. Based on the neighbour-joining method (Figures 1 and 2), the phenotypic and genomic data

TABLE 5: Substrate consumption and lignocellulolytic enzyme activity in corn stalk solid-state fermentation.

Code	Strain	Weight losses	Lac (U/g)	MnP (U/g)	LiP (U/g)	CMCase (U/g)	β -Glucosidase (U/g)	Avicelase (U/g)
A5	<i>B. subtilis</i>	29.59%	0.02	0.33	0.67	0.30	0.20	3.86
A10	<i>B. subtilis</i>	24.45%	–	0.50	0.63	0.35	0.08	4.22
A11	<i>B. licheniformis</i>	15.90%	–	0.05	0.42	0.31	0.16	4.20
S1P2	<i>C. gambrini</i>	37.57%	–	–	0.27	0.24	0.06	4.91
YH	<i>P. citrinopileatus</i>	16.29%	3.52	0.63	0.09	0.45	2.37	6.24
HJ	<i>P. ostreatus</i>	7.53%	14.02	0.81	0.03	0.30	1.50	3.97
HP	<i>P. ostreatus</i>	33.53%	14.38	0.79	0.09	0.24	1.92	2.35
RP	<i>P. djamor</i>	26.20%	1.82	0.05	–	0.23	0.29	3.26
BP	<i>P. florida</i>	15.67%	5.36	0.27	–	0.17	5.46	3.15
XB	<i>P. eryngii</i>	37.83%	4.57	2.81	0.40	0.31	4.44	5.59
XZ	<i>P. pulmonarius</i>	20.73%	11.82	1.27	–	0.33	3.13	6.79
C4P1	<i>T. atroviride</i>	17.80%	0.02	–	–	4.48	14.20	6.32
C5P1	<i>T. atroviride</i>	37.03%	–	–	–	4.61	24.83	6.39
R0P2	<i>T. funiculosus</i>	18.63%	–	–	–	1.66	1.35	4.80

Note: –: not detectable under employed assay conditions.

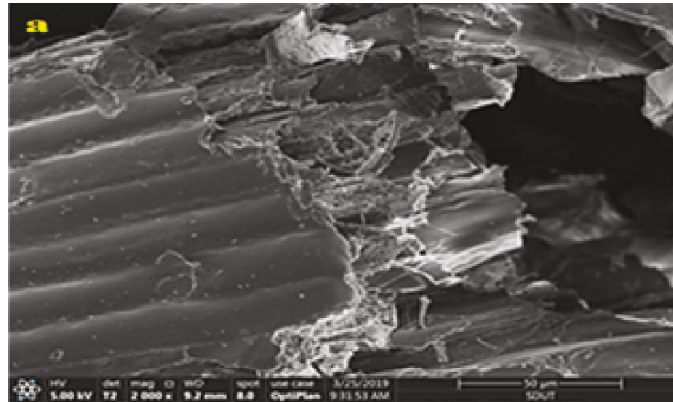
indicated that the selected bacterial and fungal strains represented strains of the genus *Bacillus* and *Pleurotus*.

3.4. Solid-State Fermentation (SSF). SSF is not the main method in industrial-scale enzyme production; however, through SSF, ligninolytic enzyme production is higher and cost-effective rather than submerged fermentation (SmF) [64]. Lignocellulolytic enzyme production by different microbes is often enhanced in SSF cultivation for the reason it contains a growth substrate with a significant content of valuable nutrients as free mono- and disaccharides and organic acids [65]. To determine the efficiency of bacterial and fungal strain's individual potential of lignocellulose utilization in agro wastes, the complicated substrate such as corn stalks was chosen. The result of SSF is present in Table 5. The difference between substrate consumption in part reflects the efficiency of the biodegrading process. Some strains showed a good degradation efficiency in 30-day single-strain biotreatment; *C. gambrini* S1P2, *P. eryngii* XB, and *T. atroviride* C5P1 showed the ability to deplete more than 37% of materials, which is the comprehensive result of lignocellulolytic enzymatic reaction by these strains; shortened solid-state fermentation period is enough for the biodegrading effect.

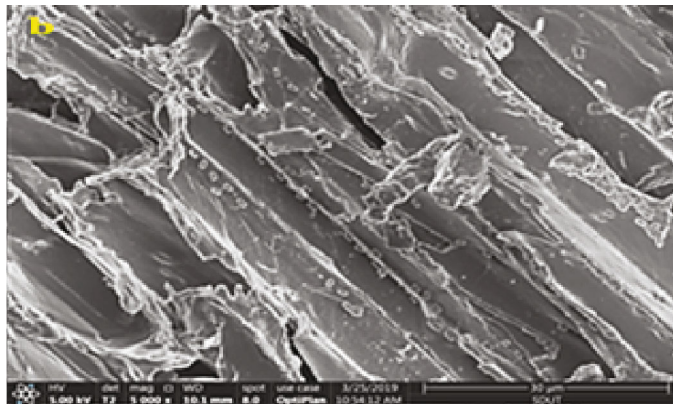
The enzyme activity results presented in Table 5 clearly shows enzymes were still active in 30 days' fungal cultures, and there are advantages of corn stalk as a growth substrate for fungal lignocellulolytic enzyme production. The 6 enzyme activities were all detectable in isolates A5-, YH-, HJ-, HP-, and XB-treated substrates. HP and HJ present the highest laccase activities of 14.02 and 14.38 U/g, respectively. XB showed the best MnP activity of 2.81 U/g. All the species have shown cellulose-degrading enzyme activity that was necessary for enzymatic saccharification of complicated natural biomass. *T. atroviride* C5P1 showed the highest levels of both CMCase, β -glucosidase, and avicelase. Not the only cellulase function could get fast biodegradation, with the similar enzymatic performance like C5P1, isolates

C4P1 are not well at solid-state fermentation, which may due to the differences of growth rate, adaptability, and enzymatic expression in the early fermentation. For the highest enzymatic activity related to growth, substrate and cultivation type, pH values, incubation temperatures, isolates are of different cultivation conditions to reach a maximal yield of enzymes [66]. Since there was almost no production of ligninolytic enzymes of filamentous fungi, the presence of a suitable incubation period was a determining factor for ligninolytic enzyme production. As the ligninolytic enzymes are produced as secondary metabolites in fungi, in most cases, the production is delayed, but early production was also observed in some fungi [67]. Elshafei et al. reported delayed Lac formation of 7.18 U/mg in *P. martensii* NRC 345 with production optima on the 26th day [68]. Mazumder et al. reported the maximum Lac production (3×10^5 U/L) in SSF *P. ostreatus* at the 10th day, and the time can be reduced to 6 days [69]. In bacteria cases, the incubation time for optimum laccase production is very brief. In *Pseudomonas extremorientalis* BU118, it takes only 24 h [70], and in *B. tequilensis* SN4, it takes 96 h for [71]. That is the reason bacterial Lac activity is low/no detectable in this study. In this study, species from various origins were compared for their ability to produce a lignocellulolytic enzyme in SSF. The observed lignocellulolytic enzyme activity can only represent enzymatic characters of isolates' late period performance in long time SSF. The detectable activity of most lignocellulolytic enzymes of *Pleurotus* isolates indicates balance and long-acting enzymatic hydrolysis and oxidation consist in fermented materials; it means white-rot decay enzymes system of *Pleurotus* spp. are more stable on agro-waste substrates, as it was reported [72, 73]. As reported, agroindustrial wastes SSF with improvement; laccase activity was high up to 2.90×10^5 U/g in *T. giganteum* AGHP [74] and 1645 IU/g in *Bacillus* spp. MSK-01 [75].

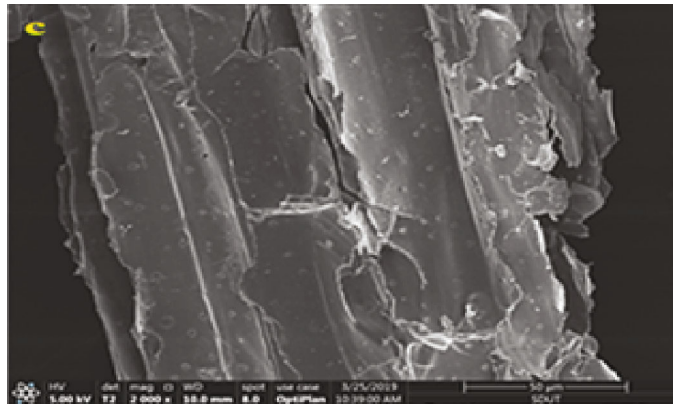
3.5. Scanning electron Microscopy Analysis. The SEM images of the untreated and treated substrates with a single isolate



(a)

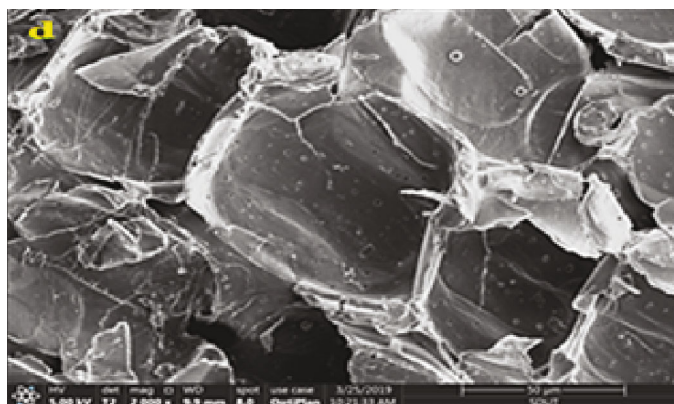


(b)

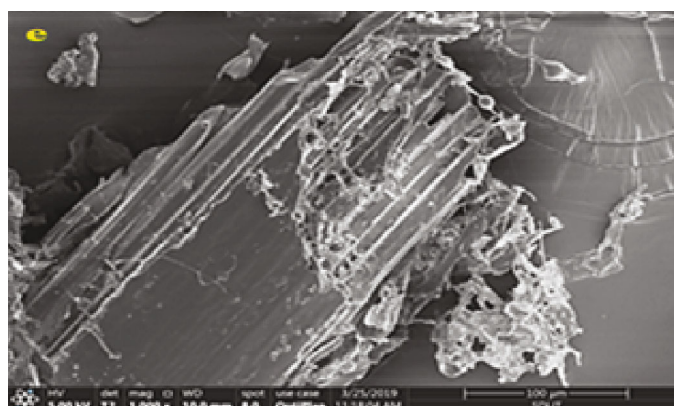


(c)

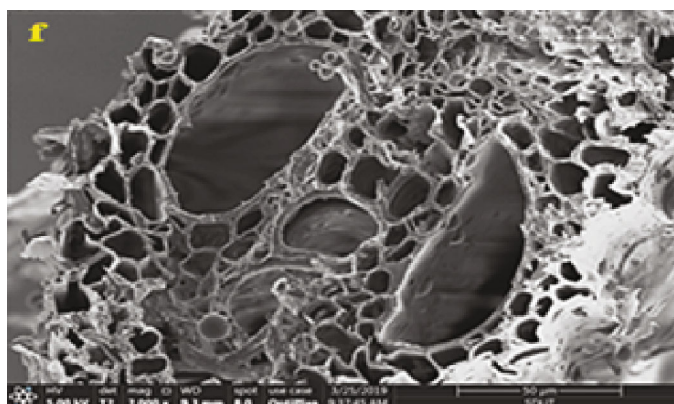
FIGURE 3: Continued.



(d)



(e)



(f)

FIGURE 3: Scanning electron microscopy images of substrate: (a) untreated corn stalk, (b). *B. subtilis* A10-treated corn stalk, (c). *T. atroviride* C4P1-treated corn stalk, (d) *P. djamora* RP-treated corn stalk, (e). *T. atroviride* C5P1-treated corn stalk, and (f) *T. funiculosus* ROP2-treated corn stalk.

gave evidence of the physical changes that occurred during the treatment (Figure 3). In the case of untreated corn stalks, which had a compact fibrillary structure, the structures appear smooth and the ordered arrangements can be observed on the surface (Figure 3(a)).

A major improvement was observed after biopretreatments. The microfibrils in the cell wall structure were completely disrupted and formed a new pattern with an expanded surface area. It appears that some biopretreatment generated a more conglomerate texture with a sponge-like

structure. Bacteria can enter through the breaks of natural biomass structure and grow inside (Figure 3(b)). After being treated by bacteria, corn stalks did not show much change, and microorganism proliferation seems to not leave corrode marks on the smooth surface except the sharp edge being passivated. But the bioincising effect is much more visible on fungi-treated substrates (Figures 3(c)–3(f)), the corn stalks treated by fungi showed disrupted surfaces and flaking out. The contact with the lignocellulolytic enzyme caused the surface to roughen and form densely corroded marks

or holes. The external fibers are loosened during fungal treatment. On white-rot fungi-treated materials (Figure 3(d)), the microorganism erodes seriously; most of these surface erosions has perforated. Scanning of recognizable transfer passage tissue on corn stalks shows fungi hardly grow inside materials; the fungal growth decay of natural lignocellulose biomass mainly affects on outside region (Figure 3(f)). Comparing the waxy surfaces of corn stalks before/after pretreatment (Figures 3(a) and 3(e)), the microbial effect makes no difference on the surfaces from the wax-protected side.

3.6. X-Ray Diffraction (XRD) Analysis. The XRD patterns of the corn stalk materials mainly present two peaks, which are supposed to represent the typical cellulose I structure, namely, the amorphous region and crystalline region diffraction peak of cellulose at 16° and 22° , respectively [76]. The peak around 16° of the two peaks' combination indicates the presence of some small amount of cellulose II structure. Before and after the SSF pretreatment step of isolates, all the samples (untreated and pretreated) showed the typical XRD peaks of cellulose. There were no pronounced differences among the XRD profiles of samples, indicating that the biopretreatment cannot make a drastic change of the crystalline nature of corn stalk cellulose. It means the ordered structure of the crystalline region in their remaining cellulose was not disrupted by the contact with lignocellulolytic enzyme and microorganisms growth. After SSF, a significant variation in the diffraction pattern was observed in all SSF biopretreated samples: two peaks around 16° overlapped into one broad and weaker peak, and the sharp crystalline peaks around 22° transformed into a smooth and broadening peak; it means biopretreatment may change some angles around and hydrogen bond rearrangement β -glycosidic linkages of the crystalline region. Table 6 presents the CrI values for the untreated and isolate-pretreated corn stalk materials. The effect of biopretreatment on the relative crystallinity biomass was different. CrI values increased after pretreatment that was observed in samples treated with isolates: *Pleurotus djamor* RP, *Pleurotus florida* BP, *Bacillus licheniformis* A11, and *Chryseobacterium gambrini* S1P2. In these samples, corresponds of both 18° and 22° was significantly decreased, but crystalline cellulose was still more recalcitrant than amorphous cellulose to microbial and enzymatic attack in bioprocess. It is a slight difference with identical XRD patterns that were documented in other pretreatment procedures which affect on cellulose harvesting and conversion [77–79]. According to our findings, most microbial pretreatment significantly increases cellulose CrI, which could be attributed to a selective disintegration of the amorphous sections of cellulose, which are more vulnerable to enzyme degradation. Despite prior results indicating a decrease in cellulose digestibility with increasing CrI of cellulose (on pure substrate), differences in enzymatic hydrolysis performance cannot be addressed solely on CrI measurements with these substrates. This is due to the fact that pretreatment biomass materials contain varying proportions of amorphous-like components, which affect not only enzymatic digestibility (for example, lignin

TABLE 6: The crystallinity indices of samples.

Substrate(s)	The crystallinity index (%)
Untreated corn stalks	64.55
Treated with <i>B. subtilis</i> A5	60.17
Treated with <i>B. subtilis</i> A10	62.71
Treated with <i>B. licheniformis</i> A11	72.83
Treated with <i>C. gambrini</i> S1P2	69.07
Treated with <i>P. citrinopileatus</i> YH	63.87
Treated with <i>P. ostreatus</i> HJ	61.06
Treated with <i>P. ostreatus</i> HP	63.04
Treated with <i>P. djamor</i> RP	68.18
Treated with <i>P. florida</i> BP	64.94
Treated with <i>P. eryngii</i> XB	61.29
Treated with <i>P. pulmonarius</i> XZ	63.83
Treated with <i>T. atroviride</i> C4P1	63.10
Treated with <i>T. atroviride</i> C5P1	61.60
Treated with <i>T. funiculosus</i> R0P2	56.35

and hemicellulose) but also the accuracy of CrI measurement using X-ray diffraction.

From the results of Table 3, the CrI value of pretreatment sample treated with *T. funiculosus* R0P2 showed decreased CrI value 56.35% as compared to untreated 64.55%. The decrease in the CrI by this fungus could be due to its conversion of crystalline cellulose into less ordered amorphous form, and its accumulation was also reflected in the broadening of the peak in the XRD spectrum, which was commonly observed in effective biopretreatment or enzymatic pretreatment of biomass [80, 81]. The decrease of determined crystallinity index of treated materials may also be due to substantial removal of lignin and hemicellulose [82, 83], but detected CrI values of biopretreatment materials in this study seems no directed relationship with cellulolytic or ligninolytic enzyme perform, similar with Moutta et al.'s study [84]. Our findings are consistent with prior research that found that chemical pretreatment alters the crystallinity of cellulose materials, but only when a significant amount of lignin is removed because delignification contributes to the enhancement of cellulose content in recovered materials [85, 86]. To date, little is known about how cellulose CrI changes during hydrolysis, and this change is highly dependent on the lignocellulosic substrates used as well as the mechanism of action of cellulases derived from various sources [87].

For XRD characterization of lignocellulosic materials before and after biopretreatment, the determined crystallinity index (CrI, %) is a fast and simple procedure for estimation of relative crystallinity; it is an important characteristic that makes the lignocellulosic network resistant to enzymatic reactions, which is often used as a measure of the relative amount of crystalline material present in a lignocellulosic sample reflect the change of susceptibility to enzymatic hydrolysis of substrates [88] and used to evaluate different biopretreatment types on the production of value-added bioconversion [89]. Microorganisms that can cause CrI

values increasing can be used as a safety pretreatment instead of classic pretreatment in the cellulose industry to prepare enzymatic sensitive materials for various processes, while microorganisms of the opposite effect on CrI values intend to break down crystalline region efficiently in the lignocellulosic biodegradation; they can be used as a microbial element in mixed cultivate cofermentation or step fermentation system, which help create an economically applicable method on industrial scale biological reaction.

4. Conclusions

In the present study, 22 bacterial strains and 14 fungal strains with lignin-degrading ability were isolated based on guaiacol colorization and aniline blue decolorization methods. The production level of ligninolytic and cellulolytic enzymes in different medium conditions was compared. 4 bacteria, 7 basidiomycete fungi, and 3 filamentous fungi identified as species of genus *Bacillus*, *Chryseobacterium*, *Pleurotus*, *Trichoderma*, and *Talaromyces* were selected as potential lignocellulose pretreatment strains. Identification of such potent isolates from natural habitats is an ongoing process and is required for developing a sustainable, efficient, and economically feasible technology. Lignocellulolytic activities of fungal isolate have an enormous potential for utilization of lignocellulosic substrates, as they are the major group of microorganisms capable of synthesizing enzymes to degrade these substrates. The potent organism can be used for large-scale lignocellulolytic enzyme production and its use of treating various industrial effluents, especially in the lignocellulosic industry; these potential isolates were set up to study their bioconversion efficiency. These results encourage further investigation of ligninolytic and cellulolytic activities of isolated strains to evaluate their efficiency for possible industrial applications.

Data Availability

No data were used to support this study.

Conflicts of Interest

The authors declare that there is no conflict of interest regarding the publication of this paper.

Acknowledgments

The authors gratefully acknowledge the technical support of the Georgia National Academy of Sciences (GNAS), and the platform support of the International Joint Laboratory on Microbial Cell Factories of Shandong University of Technology. This work was supported by the Taishan Industry Experts Program (No. tscy20160101).

References

- [1] A. J. Ragauskas, C. K. Williams, B. H. Davison et al., "The path forward for biofuels and biomaterials," *Science*, vol. 311, no. 5760, pp. 484–489, 2006.
- [2] P. Manzanares, "The role of biorefining research in the development of a modern bioeconomy," *Acta Innovations*, vol. 37, pp. 47–56, 2020.
- [3] M. H. Silveira, A. R. Morais, A. M. da Costa Lopes et al., "Current pretreatment technologies for the development of cellulosic ethanol and biorefineries," *ChemSusChem*, vol. 8, no. 20, pp. 3366–3390, 2015.
- [4] D. Graham-Rowe, "Agriculture: beyond food versus fuel," *Nature*, vol. 474, no. 7352, pp. S6–S8, 2011.
- [5] C. Li, G. Cheng, V. Balan et al., "Influence of physico-chemical changes on enzymatic digestibility of ionic liquid and AFEX pretreated corn stover," *Bioresource technology*, vol. 102, no. 13, pp. 6928–6936, 2011.
- [6] S. Q. Tian, R. Y. Zhao, and Z. C. Chen, "Review of the pretreatment and bioconversion of lignocellulosic biomass from wheat straw materials," *Renewable and Sustainable Energy Reviews*, vol. 91, pp. 483–489, 2018.
- [7] D. Kumari and R. Singh, "Pretreatment of lignocellulosic wastes for biofuel production: a critical review," *Renewable and Sustainable Energy Reviews*, vol. 90, pp. 877–891, 2018.
- [8] S. S. Hassan, G. A. Williams, and A. K. Jaiswal, "Emerging technologies for the pretreatment of lignocellulosic biomass," *Bioresource Technology*, vol. 262, pp. 310–318, 2018.
- [9] P. Morone and Y. Gülşah, "A paradigm shift in sustainability: from lines to circles," *Acta Innovations*, vol. 36, pp. 5–16, 2020.
- [10] S. Gillet, M. Aguedo, L. Petitjean et al., "Lignin transformations for high value applications: towards targeted modifications using green chemistry," *Green Chemistry*, vol. 19, pp. 4200–4233, 2017.
- [11] S. K. Bhatia, S. H. Kim, J. J. Yoon, and Y. H. Yang, "Current status and strategies for second generation biofuel production using microbial systems," *Energy Conversion and Management*, vol. 148, pp. 1142–1156, 2017.
- [12] R. Sindhu, P. Binod, and A. Pandey, "Biological pretreatment of lignocellulosic biomass—an overview," *Bioresource Technology*, vol. 199, pp. 76–82, 2016.
- [13] U. Brémond, R. de Buyer, J. P. Steyer, N. Bernet, and H. Carrere, "Biological pretreatments of biomass for improving biogas production: an overview from lab scale to full-scale," *Renewable and Sustainable Energy Reviews*, vol. 90, pp. 583–604, 2018.
- [14] A. Neamah Al Azawy, A. A. Khadom, and A. Sattar Abdul Jabbar, "Efficiency of some types of bacteria on producing biofuels from wastes of writing paper," *Journal of Environmental Chemical Engineering*, vol. 4, no. 3, pp. 2816–2819, 2016.
- [15] B. Tsegaye, C. Balomajumder, and P. Roy, "Biodelignification and hydrolysis of rice straw by novel bacteria isolated from wood feeding termite," *3 Biotech*, vol. 8, no. 10, p. 447, 2018.
- [16] H. H. Ding, S. Chang, and Y. Liu, "Biological hydrolysis pretreatment on secondary sludge: enhancement of anaerobic digestion and mechanism study," *Bioresource Technology*, vol. 244, pp. 989–995, 2017.
- [17] J. W. Lee, K. S. Gwak, J. Y. Park et al., "Biological pretreatment of softwood *Pinus densiflora* by three white rot fungi," *Journal of Microbiology*, vol. 45, no. 6, pp. 485–491, 2007.
- [18] B. C. Saha, G. J. Kennedy, N. Qureshi, and M. A. Cotta, "Biological pretreatment of corn stover with *Phlebia brevispora* NRRL-13108 for enhanced enzymatic hydrolysis and efficient ethanol production," *Biotechnology Progress*, vol. 33, no. 2, pp. 365–374, 2017.

- [19] J. C. Martínez-Patiño, T. A. Lu-Chau, B. Gullón et al., "Application of a combined fungal and diluted acid pretreatment on olive tree biomass," *Industrial Crops and Products*, vol. 121, pp. 10–17, 2018.
- [20] E. V. Stepanova, O. V. Koroleva, L. G. Vasilchenko et al., "Fungal decomposition of oat straw during liquid and solid-state fermentation," *Prikladnaia Biokhimiia i Mikrobiologiya*, vol. 39, no. 1, pp. 65–74, 2003.
- [21] T. A. Shah, C. C. Lee, W. J. Orts, and R. Tabassum, "Biological pretreatment of rice straw by ligninolytic *Bacillus* sp. strains for enhancing biogas production," *Environmental Progress and Sustainable Energy*, vol. 38, no. 3, pp. 1–9, 2018.
- [22] X. Yan, Z. Wang, K. Zhang et al., "Bacteria-enhanced dilute acid pretreatment of lignocellulosic biomass," *Bioresource Technology*, vol. 245, pp. 419–425, 2017.
- [23] P. Ander and K. E. Eriksson, "Selective degradation of wood components by white-rot fungi," *Physiologia Plantarum*, vol. 41, no. 4, pp. 239–248, 1977.
- [24] F. S. Archibald, "A new assay for lignin-type peroxidases employing the dye azure B," *Applied and Environmental Microbiology*, vol. 58, no. 9, pp. 3110–3116, 1992.
- [25] P. Gupta, K. Samant, and A. Sahu, "Isolation of cellulose-degrading bacteria and determination of their cellulolytic potential," *International journal of microbiology*, vol. 2012, Article ID 578925, 5 pages, 2012.
- [26] S. Mukhopadhyay and B. Nandi, "Optimization of cellulase production by *Trichoderma reesei* ATCC 26921 using a simplified medium on water hyacinth biomass," *Journal of Scientific and Industrial Research*, vol. 58, no. 2, pp. 107–111, 1999.
- [27] R. Bourbonnais and M. G. Paice, "Oxidation of non-phenolic substrates: an expanded role for laccase in lignin biodegradation," *FEBS letters*, vol. 267, no. 1, pp. 99–102, 1990.
- [28] M. H. Gold and J. K. Glenn, "Manganese peroxidase from *Phanerochaete chrysosporium*," *Methods in Enzymology*, vol. 161, no. 17, pp. 258–264, 1988.
- [29] M. Tien and T. K. Kirk, "Lignin-degrading enzyme from *Phanerochaete chrysosporium*: purification, characterization, and catalytic properties of a unique H₂O₂-requiring oxygenase," *Proceedings of the National Academy of Sciences of the United States of America*, vol. 81, no. 8, pp. 2280–2284, 1984.
- [30] G. L. Miller, "Use of dinitrosalicylic acid reagent for determination of reducing sugar," *Analytical Chemistry*, vol. 31, no. 3, pp. 426–428, 1959.
- [31] L. E. Berghem, L. G. Pettersson, and U. B. Axio-Fredriksson, "The mechanism of enzymatic cellulose degradation. Purification and some properties of two different 1,4β-glucan glucanohydrolases from *Trichoderma viride*," *European Journal of Biochemistry*, vol. 61, no. 2, pp. 621–630, 1976.
- [32] K. Kovács, G. Szakacs, and G. Zacchi, "Comparative enzymatic hydrolysis of pretreated spruce by supernatants, whole fermentation broths and washed mycelia of *Trichoderma reesei* and *Trichoderma atroviride*," *Bioresource Technology*, vol. 100, no. 3, pp. 1350–1357, 2009.
- [33] L. Segal, J. J. Creely, A. E. Martin, and C. M. Conrad, "An empirical method for estimating the degree of crystallinity of native cellulose using the X-ray diffractometer," *Textile Research Journal*, vol. 29, no. 10, pp. 786–794, 2016.
- [34] M. Yadav, G. Bista, R. Maharjan et al., "Secretory laccase from *Pestalotiopsis* species CDBT-F-G1 fungal strain isolated from high altitude: optimization of its production and characterization," *Applied Sciences*, vol. 9, no. 2, p. 340, 2019.
- [35] A. Rao, N. Ramakrishna, S. Arunachalam, and M. Sathivelu, "Isolation, screening and optimization of laccase-producing endophytic fungi from *Euphorbia milii*," *Arabian Journal for Science and Engineering*, vol. 44, no. 1, pp. 51–64, 2018.
- [36] R. K. Pundir, V. K. Mishra, S. Rana, and M. Lakhani, "Screening of laccase producing fungi from soil samples - an *in vitro* study," *Electronic Journal of Biology*, vol. 12, no. 3, pp. 254–257, 2016.
- [37] K. I. Dantur, R. Enrique, B. Welin, and A. P. Castagnaro, "Isolation of cellulolytic bacteria from the intestine of *Diatraea saccharalis* larvae and evaluation of their capacity to degrade sugarcane biomass," *AMB Express*, vol. 5, p. 15, 2015.
- [38] B. S. Donohoe and M. G. Resch, "Mechanisms employed by cellulase systems to gain access through the complex architecture of lignocellulosic substrates," *Current Opinion in Chemical Biology*, vol. 29, pp. 100–107, 2015.
- [39] S. Zhou, S. Raouche, S. Grisel, D. Navarro, J. C. Sigoillot, and I. Herpoel-Gimbert, "Solid-state fermentation in multi-well plates to assess pretreatment efficiency of rot fungi on lignocellulose biomass," *Microbial Biotechnology*, vol. 8, no. 6, pp. 940–949, 2015.
- [40] M. J. Sukhesh and P. V. Rao, "Anaerobic digestion of crop residues: technological developments and environmental impact in the Indian context," *Biocatalysis and Agricultural Biotechnology*, vol. 16, pp. 513–528, 2018.
- [41] A. O. Falade, O. A. L. Eyisi, L. V. Mabinya, U. U. Nwodo, and A. I. Okoh, "Peroxidase production and ligninolytic potentials of fresh water bacteria *Raoultella ornithinolytica* and *Ensifer adhaerens*," *Biotechnology reports*, vol. 16, pp. 12–17, 2017.
- [42] V. Elisashvili, M. Penninckx, E. Kachlishvili, M. Asatiani, and G. Kvesitadze, "Use of *Pleurotus dryinus* for lignocellulolytic enzymes production in submerged fermentation of mandarin peels and tree leaves," *Enzyme and Microbial Technology*, vol. 38, no. 7, pp. 998–1004, 2006.
- [43] M. Fricker, L. Boddy, and D. Bebb, "Network organisation of mycelial fungi," in *Biology of the fungal cell*, pp. 309–330, Springer, Berlin, Heidelberg, 2007.
- [44] E. C. Egwim, A. Y. Kabiru, and A. J. Tola, "Partial characterization of lignin peroxidase expressed by bacterial and fungal isolates from termite gut," *Biokemistri*, vol. 27, no. 1, pp. 33–38, 2015.
- [45] A. J. Ragauskas, G. T. Beckham, M. J. Bidy et al., "Lignin valorization: improving lignin processing in the biorefinery," *Science*, vol. 344, no. 6185, 2014.
- [46] A. Bronikowski, P. L. Hagedoorn, K. Koschorreck, and V. B. Urlacher, "Expression of a new laccase from *Moniliophthora roreri* at high levels in *Pichia pastoris* and its potential application in micropollutant degradation," *AMB Express*, vol. 7, no. 1, p. 73, 2017.
- [47] S. Laurichesse and L. Avérous, "Chemical modification of lignins: towards biobased polymers," *Progress in Polymer Science*, vol. 39, no. 7, pp. 1266–1290, 2014.
- [48] R. Datta, A. Kelkar, D. Baraniya et al., "Enzymatic degradation of lignin in soil: a review," *Sustainability*, vol. 9, no. 7, p. 1163, 2017.
- [49] A. O. Falade, U. U. Nwodo, B. C. Iweriebor, E. Green, L. V. Mabinya, and A. I. Okoh, "Lignin peroxidase functionalities and prospective applications," *Microbiologyopen*, vol. 6, no. 1, p. e00394, 2017.
- [50] V. M. Nakajima, F. E. D. F. Soares, and J. H. D. Queiroz, "Screening and decolorizing potential of enzymes from spent

- mushroom composts of six different mushrooms,” *Biocatalysis and Agricultural Biotechnology*, vol. 13, pp. 58–61, 2018.
- [51] J. Zhang, W. Ke, and H. Chen, “Enhancing laccase production by white-rot fungus *Trametes hirsuta* SSM-3 in co-culture with yeast *Sporidiobolus pararoseus* SSM-8,” *Preparative Biochemistry & Biotechnology*, vol. 50, no. 1, pp. 10–17, 2020.
- [52] S. Rezaei, A. R. Shahverdi, and M. A. Faramarzi, “Isolation, one-step affinity purification, and characterization of a polyextremotolerant laccase from the halophilic bacterium *Aquisalibacillus elongatus* and its application in the delignification of sugar beet pulp,” *Bioresource Technology*, vol. 230, pp. 67–75, 2017.
- [53] S. Afreen, R. Anwer, R. K. Singh, and T. Fatma, “Extracellular laccase production and its optimization from *Arthrospira maxima* catalyzed decolorization of synthetic dyes,” *Saudi Journal of Biological Sciences*, vol. 25, no. 7, pp. 1446–1453, 2018.
- [54] K. Dhakar, R. Jain, S. Tamta, and A. Pandey, “Prolonged laccase production by a cold and pH tolerant strain of *Penicillium pinophilum* (MCC 1049) isolated from a low temperature environment,” *Enzyme Research*, vol. 2014, 2014.
- [55] J. O. Unuofin, A. I. Okoh, and U. U. Nwodo, “Maize stover as a feedstock for enhanced laccase production by two gammaproteobacteria: a solution to agroindustrial waste stockpiling,” *Industrial Crops and Products*, vol. 129, pp. 611–623, 2019.
- [56] Y. Singh and S. K. Srivastava, “Performance improvement of *Bacillus aryabhatai* ITBHU02 for high-throughput production of a tumor-inhibitory L-asparaginase using a kinetic model based approach,” *Journal of Chemical Technology and Biotechnology*, vol. 89, no. 1, pp. 117–127, 2014.
- [57] S. L. A. Sari, A. Pangstuti, A. Susilowati et al., “Cellulolytic and hemicellulolytic bacteria from the gut of *Oryctes rhinoceros* larvae, Biodiversitas,” *Journal of Biological Diversity*, vol. 17, no. 1, pp. 78–83, 2016.
- [58] D. N. Adhyaru, N. S. Bhatt, H. A. Modi, and J. Divecha, “Cellulase-free-thermo-alkali-solvent-stable xylanase from *Bacillus altitudinis* DHN8: over-production through statistical approach, purification and bio-deinking/bio-bleaching potential,” *Biocatalysis and Agricultural Biotechnology*, vol. 12, pp. 220–227, 2017.
- [59] Y. Zhang, Z. Lv, J. Zhou et al., “Amperometric biosensors based on recombinant bacterial laccase CotA for hydroquinone determination,” *Electroanalysis*, vol. 32, no. 1, pp. 142–148, 2019.
- [60] T. Li, H. Wang, J. Li et al., “Enzymatic characterization, molecular dynamics simulation, and application of a novel *Bacillus licheniformis* laccase,” *International Journal of Biological Macromolecules*, vol. 167, no. 15, pp. 1393–1405, 2021.
- [61] D. Maji, M. Singh, K. Wasnik, C. S. Chanotiya, and A. Kalra, “The role of a novel fungal strain *Trichoderma atroviride* RVF3 in improving humic acid content in mature compost and vermicompost via ligninolytic and celluloxylanolytic activities,” *Journal of Applied Microbiology*, vol. 119, no. 6, pp. 1584–1596, 2015.
- [62] Q. An, J. Qiao, L. S. Bian et al., “Comparative study on laccase activity of white rot fungi under submerged fermentation with different lignocellulosic wastes,” *BioResources*, vol. 15, no. 4, pp. 9166–9179, 2020.
- [63] P. Upadhyay, R. Shrivastava, and P. K. Agrawal, “Bioprospecting and biotechnological applications of fungal laccase,” *3 Biotech*, vol. 6, no. 1, p. 15, 2016.
- [64] R. Debnath and T. Saha, “An insight into the production strategies and applications of the ligninolytic enzyme laccase from bacteria and fungi,” *Biocatalysis and Agricultural Biotechnology*, vol. 26, p. 101645, 2020.
- [65] D. Filipe, H. Fernandes, C. Castro et al., “Improved lignocellulolytic enzyme production and antioxidant extraction using solid-state fermentation of olive pomace mixed with winery waste,” *Biofuels, Bioproducts and Biorefining*, vol. 14, no. 1, pp. 78–91, 2019.
- [66] A. Taddia, M. J. Boggione, and G. Tubio, “Screening of different agroindustrial by-products for industrial enzymes production by fermentation processes,” *International Journal of Food Science and Technology*, vol. 54, no. 4, pp. 1027–1035, 2018.
- [67] G. M. Zeng, J. G. Shi, X. Z. Yuan et al., “Effects of Tween 80 and rhamnolipid on the extracellular enzymes of *Penicillium simplicissimum* isolated from compost,” *Enzyme and Microbial Technology*, vol. 39, no. 7, pp. 1451–1456, 2006.
- [68] A. M. Elshafei, M. M. Hassan, B. M. Haroun, M. A. Elsayed, and A. M. Othman, “Optimization of laccase production from *Penicillium martensii* NRC 345,” *Advances in Life Sciences*, vol. 2, no. 1, pp. 31–37, 2012.
- [69] S. Mazumder, S. K. Basu, and M. Mukherjee, “Laccase production in solid-state and submerged fermentation by *Pleurotus ostreatus*,” *Engineering in Life Sciences*, vol. 9, no. 1, pp. 45–52, 2009.
- [70] M. Neifar, H. Chouchane, M. Mahjoubi, and A. A. Jaouani, “*Pseudomonas extremorientalis* BU118: a new salt-tolerant laccase-secreting bacterium with biotechnological potential in textile azo dye decolorization,” *3 Biotech*, vol. 6, no. 1, p. 107, 2016.
- [71] S. Sondhi, P. Sharma, S. Saini, N. Puri, and N. Gupta, “Purification and characterization of an extracellular, thermo-alkalizable, metal tolerant laccase from *Bacillus tequilensis* SN4,” *PLoS One*, vol. 9, no. 5, p. e96951, 2014.
- [72] M. Jongman, K. B. Khare, and D. Loeto, “Oyster mushroom cultivation at different production systems: a review,” *European Journal of Biomedical and Pharmaceutical Sciences*, vol. 5, no. 5, pp. 72–79, 2018.
- [73] T. M. Nguyen and S. L. Ranamukhaarachchi, “Effect of different culture media, grain sources and alternate substrates on the mycelial growth of *Pleurotus eryngii* and *Pleurotus ostreatus*,” *Pakistan Journal of Biological Sciences*, vol. 23, no. 3, pp. 223–230, 2020.
- [74] H. Patel and A. Gupte, “Optimization of different culture conditions for enhanced laccase production and its purification from *Tricholoma giganteum* AGHP,” *Bioresources and Bioprocessing*, vol. 3, no. 1, p. 11, 2016.
- [75] S. Sondhi and K. Saini, “Response surface based optimization of laccase production from *Bacillus* sp. MSK-01 using fruit juice waste as an effective substrate,” *Heliyon*, vol. 5, no. 5, 2016.
- [76] Y. Nishiyama, P. Langan, and H. Chanzy, “Crystal structure and hydrogen-bonding system in cellulose I β from synchrotron X-ray and neutron fiber diffraction,” *Journal of the American Chemical Society*, vol. 124, no. 31, pp. 9074–9082, 2002.
- [77] X. Zhao, L. Zhang, and D. Liu, “Biomass recalcitrance. Part I: the chemical compositions and physical structures affecting the enzymatic hydrolysis of lignocellulose,” *Biofuels, Bioproducts and Biorefining*, vol. 6, no. 4, pp. 465–482, 2012.

- [78] A. K. Chandel, F. A. Antunes, V. Anjos et al., "Multi-scale structural and chemical analysis of sugarcane bagasse in the process of sequential acid-base pretreatment and ethanol production by *Scheffersomyces shehatae* and *Saccharomyces cerevisiae*," *Biotechnology for Biofuels*, vol. 7, no. 1, p. 63, 2014.
- [79] S. C. Pereira, L. Maehara, C. M. M. Machado, and C. S. Farinas, "Physical-chemical-morphological characterization of the whole sugarcane lignocellulosic biomass used for 2G ethanol production by spectroscopy and microscopy techniques," *Renewable Energy*, vol. 87, pp. 607-617, 2016.
- [80] M. Poletto, H. L. Ornaghi, and A. J. Zattera, "Native cellulose: structure, characterization and thermal properties," *Materials*, vol. 7, no. 9, pp. 6105-6119, 2014.
- [81] R. Ramarajan and C. S. Manohar, "Biological pretreatment and bioconversion of agricultural wastes, using ligninolytic and cellulolytic fungal consortia," *Bioremediation Journal*, vol. 21, no. 2, pp. 89-99, 2017.
- [82] B. Deepa, E. Abraham, N. Cordeiro et al., "Utilization of various lignocellulosic biomass for the production of nanocellulose: a comparative study," *Cellulose*, vol. 22, no. 2, pp. 1075-1090, 2015.
- [83] C. A. Rezende, M. A. de Lima, P. Maziero, E. R. de Azevedo, W. Garcia, and I. Polikarpov, "Chemical and morphological characterization of sugarcane bagasse submitted to a delignification process for enhanced enzymatic digestibility," *Biotechnology for biofuels*, vol. 4, no. 1, 2011.
- [84] R. D. O. Moutta, V. S. Ferreira-Leitão, and E. P. D. S. Bon, "Enzymatic hydrolysis of sugarcane bagasse and straw mixtures pretreated with diluted acid," *Biocatalysis and Biotransformation*, vol. 32, no. 1, pp. 93-100, 2014.
- [85] A. R. C. Morais, J. V. Pinto, D. Nunes et al., "Imidazole: prospect solvent for lignocellulosic biomass fractionation and delignification," *ACS Sustainable Chemistry & Engineering*, vol. 4, no. 3, pp. 1643-1652, 2016.
- [86] Y. Yu and H. W. Wu, "Significant differences in the hydrolysis behavior of amorphous and crystalline portions within microcrystalline cellulose in hot-compressed water," *Industrial and Engineering Chemistry Research*, vol. 49, no. 8, pp. 3902-3909, 2010.
- [87] T. Cui, J. Li, Z. Yan, M. Yu, and S. Li, "The correlation between the enzymatic saccharification and the multidimensional structure of cellulose changed by different pretreatments," *Biotechnology for Biofuels*, vol. 7, no. 1, p. 134, 2014.
- [88] S. Park, J. O. Baker, M. E. Himmel, P. A. Parilla, and D. K. Johnson, "Cellulose crystallinity index: measurement techniques and their impact on interpreting cellulase performance," *Biotechnology for Biofuels*, vol. 3, no. 2010, p. 10, 2010.
- [89] L. Li, W. Zhou, H. Wu, Y. Yu, F. Liu, and D. Zhu, "Relationship between crystallinity index and enzymatic hydrolysis performance of celluloses separated from aquatic and terrestrial plant materials," *BioResources*, vol. 9, no. 3, pp. 3993-4005, 2014.