

Article

Electrochemical Oxidation of L-selenomethionine and Se-methylseleno-L-cysteine at a Thiol-Compound-Modified Gold Electrode: Its Application in a Flow-Through Voltammetric Sensor

Lai-Hao Wang * and Yu-Han Zhang

Department of Medical Chemistry, Chia Nan University of Pharmacy and Science, 60 Erh-Jen Road, Section 1, Rende, Tainan 71743, Taiwan; je20120108@gmail.com

* Correspondence: e201466wang@msa.hinet.net; Tel.: +886-6-266-4911 (ext. 2316); Fax: +886-6-266-7319

Academic Editor: W. Rudolf Seitz

Received: 28 December 2016; Accepted: 14 February 2017; Published: 16 February 2017

Abstract: A flow-electrolytic cell that consists of a bare gold wire or of different thiol-compound-modified gold electrodes (such as 2,4-thiazolidinedione, 2-mercapto-5-thiazoline, 2-mercaptothiazoline, L-cysteine, thioglycolic acid) was designed to be used in a voltammetric detector to identify L-selenomethionine and Se-methylseleno-L-cysteine using high-performance liquid chromatography. Both L-selenomethionine and Se-methylseleno-L-cysteine are more efficiently electrochemically oxidized on a thiol/gold than on a bare gold electrode. For the DC mode, and for measurements with suitable experimental parameters, a linear concentration from 10 to 1600 ng·mL⁻¹ was found. The limits of quantification for L-selenomethionine and Se-methylseleno-L-cysteine were below 10 ng·mL⁻¹. The method can be applied to the quantitative determination of L-selenomethionine and Se-methylseleno-L-cysteine in commercial selenium-containing supplement products. Findings using high-performance liquid chromatography with a flow-through voltammetric detector and ultraviolet detector are comparable.

Keywords: thiol-modified gold electrodes; amperometric detection; L-selenomethionine; Se-methylseleno-L-cysteine

1. Introduction

Rezvafar et al. [1] reported that the immunomodulator drug (IMOD) they tested was an electromagnetically-treated, selenium (Se)-based, herbal medicine with antioxidant properties and that it prevented the complications of polycystic ovary. The effects of bacteriostasis in vitro of Se-enriched herbal medicine on *Escherichia coli* and *Salmonella* have been studied [2,3]. Therefore, it is used to prepare a high-energy composite peptide selenoprotein nutrient solution [4]. Selenium is an essential component of several antioxidant enzymes in animal taxonomic groups, and exposure to too much or too little Se can negatively affect an organism [5]. It has been reported that the concentrations for toxicity, bioavailability and reactivity of Se depend on its chemical forms and concentration. Medicinal plants enriched with anticarcinogenic Se compounds can be used to improve public health. Se in plants exists predominantly in organic forms, such as selenoamino acids (selenocysteine, selenocysteine, selenomethionine and Se-methylselenocysteine) and in trace quantities in inorganic Se species. Hence, accurate and precise analytical methodologies for determining Se are required to obtain the correct chemical forms and concentrations [6–8].

Several methods for determining Se have been developed over the years: fluorescence spectrophotometry [9,10], microscopic identification [11], atomic absorption spectrometry [12,13], inductively-coupled plasma atomic emission spectroscopy (ICP-AES) [14,15], chromatographic separation coupled to high-performance liquid chromatography inductively-coupled plasma mass

spectrometry (HPLC-ICP-MS) [16–20] and electrochemical techniques [21–31]. Generally, the analytical techniques used to determine are HPLC-ICP-MS. The above-mentioned analytical methods have low limits of detection, selectivity and sensitivity, but they were widely used in different matrices. The voltammetric technique that we propose here, however, is inexpensive, excellently sensitive and selective and used primarily for speciation analysis and mechanism research. The electrochemical behavior of selenocysteine (SeCyst) has previously been studied on Au-, silver (Ag)- and silver nitrate (AgNO₃)-modified carbon paste electrodes [21]. Electrochemical oxidation of selenoamino acids (selenocysteine and selenomethionine) on gold electrodes [22] and of selenocysteine on Se-Au film-modified glassy carbon electrodes [23] have also been investigated. Since the mainstream development of gold-alkanethiol self-assembled monolayers (SAMs) in the early 1980s, they have found widespread utility in the fabrication of chemical and biological sensors [24–31]. The least expensive and the simplest way to synthesize thin films of a variety of compounds is based on using various SAM substrates on gold surfaces. However, our review of the literature revealed no research on the electrochemical oxidation of L-selenomethionine or Se-methylseleno-L-cysteine on the five kinds of thin-film modified groups of gold electrodes. The modified groups included thioheterocycles groups (2, 4-thiazolidinedione, 2-mercapto-5-thiazoline and 2-mercaptothiazoline) and thiol groups (L-cysteine and thioglycolic acid). It has been reported [32] that many sulfuric compounds, e.g., sulfide, disulfide and mercaptan, can self-assemble as thin and sequential monolayers on a metal substrate. Thiocetic acid can modify a gold surface through its S-S bond. It follows that SAMs can be exploited for their directed conjugation and incorporation of biocomponents and, therefore, surface functionalization [33]. The charge transfer across the Se-Au bond is less pronounced than that in the S-Au bond, which indicates a less ionic (or more metallic) bond, and therefore, others [34–36] have hypothesized that selenium SAMs offer better conduction properties. L-selenomethionine and Se-methylseleno-L-cysteine can be adsorbed on S-Au surfaces by replacing sulfur with selenium in a conjugated molecule. In the present study, we report a novel method of determining L-selenomethionine and Se-methylseleno-L-cysteine: using a SAM-covered gold electrode that chemically reacts as a selective sensor with thiol groups and is coupled with HPLC. Electrochemical flow cell devices were designed to study L-selenomethionine and Se-methylseleno-L-cysteine flow through gold and modified gold electrode electrochemical processes. The optimal experimental conditions for determining L-selenomethionine and Se-methylseleno-L-cysteine in pharmaceutical products are described in this paper.

2. Experimental Section

2.1. Apparatus and Materials

All electrochemical measurements were performed with a potentiostat-galvanostat (SP-150; Bio-Logic SAS, Claix, France) with a conventional three-electrode configuration with gold and thiol-compound-modified gold as a working electrode. Potentials were measured versus an Ag/silver chloride (AgCl) electrode (RE-1; Bioanalytical Systems, West Lafayette, IN, USA), and a platinum wire was used as the auxiliary electrode. An HPLC system (LC-10 ADvp; Shimadzu, Kyoto, Japan) with an injection valve (Rheodine 7125; Sigma-Aldrich, St. Louis, MO, USA) with a 20-mL sample loop was coupled to an amperometric detector (Decade SDC; Antec Leyden B.V., Zoeterwoude, The Netherlands). The flow cell was designed with the following electrodes: an Ag/AgCl/0.1 M potassium chloride (KCl) reference electrode (Bioanalytical Systems), a platinum auxiliary electrode and a gold or a thiol-compound-modified gold electrode (length: 8 cm; internal diameter (i.d.): 3 mm) as the working electrode for detecting L-selenomethionine and Se-methylseleno-L-cysteine. The thiol compounds were L-selenomethionine, Se-methylseleno-L-cysteine and 2-mercapto-5-thiazoline (TCI; Tokyo, Japan); 2,4-thiazolidinedione (Acros Organics; Geel, Belgium); 2-mercaptothiazoline (Alfa Aesar; Ward Hill, MA, USA); L-cysteine (Sigma-Aldrich); and thioglycolic acid (E. Merck Chemical Co.; Darmstadt, Germany). The commercial samples containing L-selenomethionine and Se-methylseleno-L-cysteine

supplements were produced abroad, but purchased locally: Vitacost Selenium Select[®] (selenium 200 mcg), Solgar yeast-free selenium (selenium 100 mcg), Irwin Naturals Living Green Liquid-Gel Multi (selenium 75 mcg), LifeExtension (selenium 200 mcg) and Jarrow Formulas (selenium 200 mcg). All other reagents were of analytical grade.

2.2. Determining L-Selenomethionine Using Cyclic Voltammetry

Cyclic voltammetry (CV) was done in phosphate buffer (pH 2.23–6.57), acetate buffer (pH 4.18), Britton and Robison buffer (pH 2.46–10.45) and lithium perchlorate (LiClO₄) solutions as supporting electrolytes for a gold electrode. CV potentials ranged from −0.4 V to +1.5 V at a scan rate of 25 mV·s^{−1}. The CV data were calculated using SP-150, Bio-Logic SAS and EC-Lab[®] software. The standard stock solution was prepared by dissolving the appropriate amount of L-selenomethionine in methanol.

2.3. Preparing Thiol-Modified-Au Electrodes

The gold wire electrode was cleaned then placed in the tube containing thiol compound solution, deoxygenated by purging with nitrogen for 5 min. The different thiol-modified-Au electrodes were electrolytically plated with a thiol compound (2-mercapto-5-thiazoline, 2-mercaptothiazoline, L-cysteine, thioglycolic acid or 2,4-thiazolidinedione) from 10 mL of 0.1 M acetate buffer (pH 4.23), 0.01 to 1.6 mM thiol solution, respectively, and the potential was cycled between 0.0 V and 1.5 V (versus an Ag/AgCl reference electrode) with a scan rate of 25 mV·s^{−1} until the CVs showed no further change.

2.4. Construction of a Voltammetric Sensor for Liquid Chromatography

The flow cell was designed with the following electrodes: an Ag/AgCl/0.1 M KCl reference electrode, a stainless steel auxiliary electrode and a modified thiol/Au (length: 8 cm; i.d.: 0.3 mm) as the working electrode for detecting L-selenomethionine and Se-methylseleno-L-cysteine. The amperometric detection was achieved in a homemade flow-through cell prepared in our laboratory as previously described [37]. A flow-through electrolysis cell was used for DC-mode amperometric detection. Reversed-phase HPLC was done on a column (250 mm × 4.6 mm) (LiChroCart[®]; Merck, Darmstadt, Germany) eluted with methanol and water (10:90 v/v) containing 1.0 mM of KH₂PO₄ (pH 3.89) as the mobile phase, at a flow rate of 1.0 mL·min^{−1}. It was examined using an ultraviolet (UV) detector set at 248 nm. The electrochemical detector was operated between +0.6 V and 1.3 V for gold and thiol-modified-Au electrodes.

2.5. Application to Commercial Selenium Supplement Drugs

A set of standard solutions was produced by diluting aliquots of the stock solutions with methanol to 10 mL in calibrated flasks. Taking into account the L-selenomethionine or Se-methylseleno-L-cysteine content of the selenium supplement drug samples (approximately 0.008–0.02 g), the latter were accurately weighed in a 55-mL polyfluoroalkoxy bottle diluted to about 10 mL of methanol:water (1:1, v/v), put into a microwave (MARS 6 System; CEM Corp., Matthews, NC, USA), dissolved and then centrifuged. The supernatant was transferred into a 10-mL calibrated flask. An aliquot of the solution was filtered through a 0.45-μm membrane filter before it was analyzed using HPLC. A chromatograph was obtained using 20 mL of the prepared standard solution under the operating conditions described above.

3. Results and Discussion

3.1. Voltammetric Behavior of L-Selenomethionine on Au Electrodes

The anodic peak potential and current of L-selenomethionine in 0.1 M acetate buffer (pH 4.23) of the bare gold electrode were (0.823 V, 6.67 μA) and (1.11 V, 9.49 μA), respectively (Figure 1). The anodic peak potentials and currents of L-selenomethionine were for 2-mercaptothiazoline modified gold (1.21 V, 8.87 μA) (1.342 V, 16.0 μA), 2-mercapto-5-thiazoline modified gold (1.12 V, 12.0 μA), L-cysteine-modified gold (0.891 V, 4.71 μA) (1.09 V, 7.19 μA), thioglycolic acid-modified gold (1.00 V, 7.03 μA) and 2,4-thiazolidinedione-modified gold electrodes (1.02 V, 5.36 μA) (Figure 1).

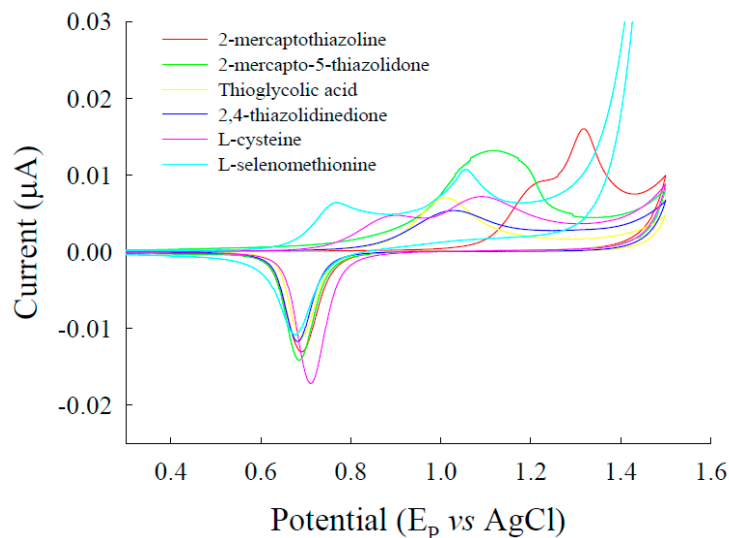


Figure 1. Cyclic voltammograms of L-selenomethionine on bare gold electrodes and on gold electrodes modified by different thiol compounds (0.074 mM) (thiol/Au) at 25 mV/s in acetate buffer (pH = 4.23).

Acid-based equilibrium directly affected the electroactive species; changes in peak current, potential and pH can also occur because of chemical reactions [22,23]. L-selenomethionine was protonized in the pH < 2.1 region because of acid-catalysis (Figure 2A). In the pH 2.2–4.0 region, the first current peak was almost constant, but when the pH was >3.2, the current increased with increasing pH values: the highest peak was at pH 4.0. In the pH 5–7 region, the unprotonated form of L-selenomethionine underwent uncatalyzed changes that were similar to the isoelectric points of cysteine and L-methionine at pH 5.05 and pH 5.74, respectively. The peak potential decreased with increasing pH values, and the shift was less positive (Figure 2B). The two approximately linear portions (plotted for $(\text{pK} - 1) > \text{pH} > (\text{pK} + 1)$) intersect at a pH value corresponding to pK. Based on L-selenomethionine pKa values in acid (pK 2.15) and alkaline (pK 8.94), different species (protonized and unprotonated) might be present in aqueous solutions. The peak currents are higher at pH 2.5 and pH 4.2, and at pH 4.2, the peak potential was the lowest within the acidic range. Because acidic solution is suitable for HPLC column analysis, all of the following experiments were done at pH 4.2. However, in inorganic redox systems, there are no proton transfers (only electron state transitions); thus, the electron transition was not significantly affected by changes in pH.

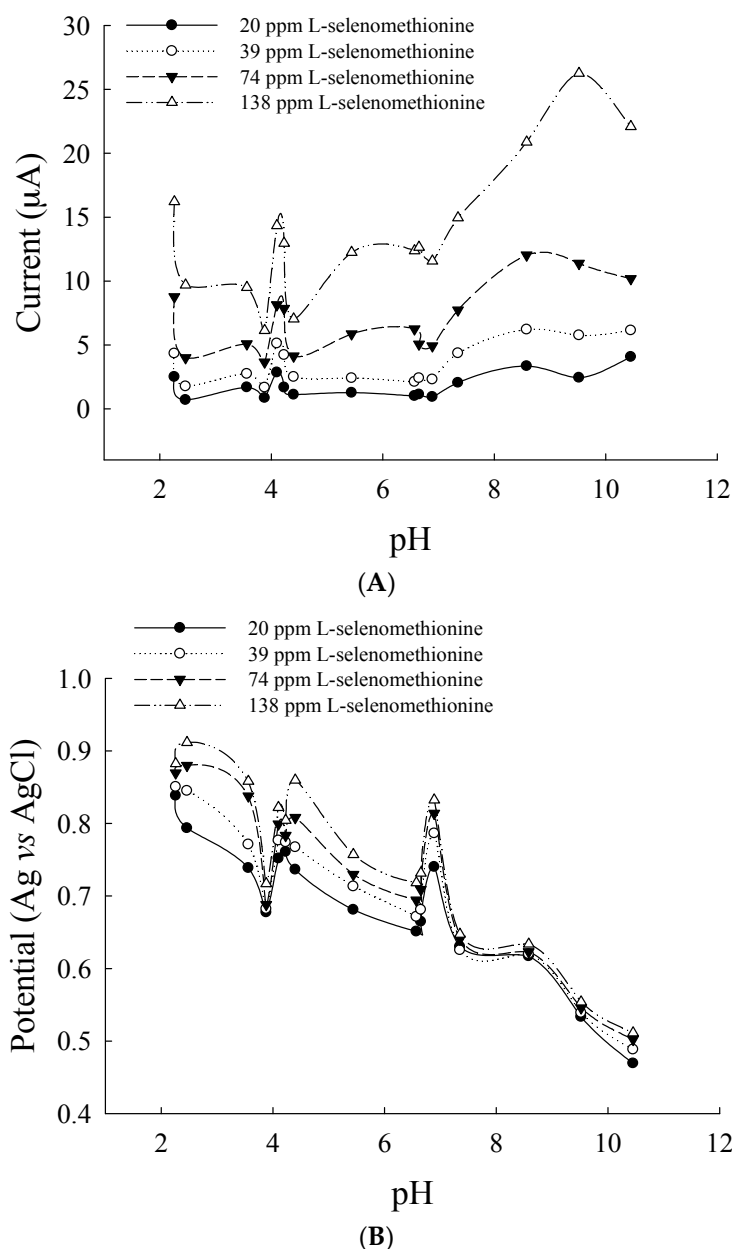


Figure 2. Effect of pH values on anodic peak in Britton and Robison buffer (pH 2.46–10.45) containing 20–138 mg·L⁻¹ L-selenomethionine. (A) The relationships between peak currents and pH and (B) the relationships between potential and pH.

3.2. Optimal Conditions for a Flow-Through Voltammetric Detector

Methanol-water that contained various ratios of 0.1 mM phosphate buffer (pH 3.5–4.2) was prepared. Experiments showed that L-selenomethionine was retained for 3.62 min and that Se-methylseleno-L-cysteine was retained for 2.77 min, after which, baseline separation was recovered. Methanol-water (10:90, v/v) that contained phosphate buffer (pH 3.92) was found to be the best eluent for sensitivity higher than that of other eluents. Therefore, phosphate-buffered solution was chosen for determining L-selenomethionine and Se-methylseleno-L-cysteine. To compare the electroanalytical utility of thiol/Au electrodes, we used liquid chromatography with electrochemical detection (LC-ECD) to measure the L-selenomethionine and Se-methylseleno-L-cysteine on thiol/Au electrodes and bare gold electrodes in methanol-water (10:90, v/v). The peaks of L-selenomethionine and Se-methylseleno-L-cysteine on thiol/Au electrodes are higher than that of the bare gold electrode

(Figures 3 and 4). The sensitivity of thioglycolic acid (TGA) is greater than that of the other thiol/Au electrodes. Because the TGA/Au electrode has only one peak, the interference is less than that of the other modified electrodes, and the catalytic effect (the current) is greater (Figure 1). Therefore, we used the TGA/Au electrode to determine L-selenomethionine and Se-methylseleno-L-cysteine in commercial selenium supplements.

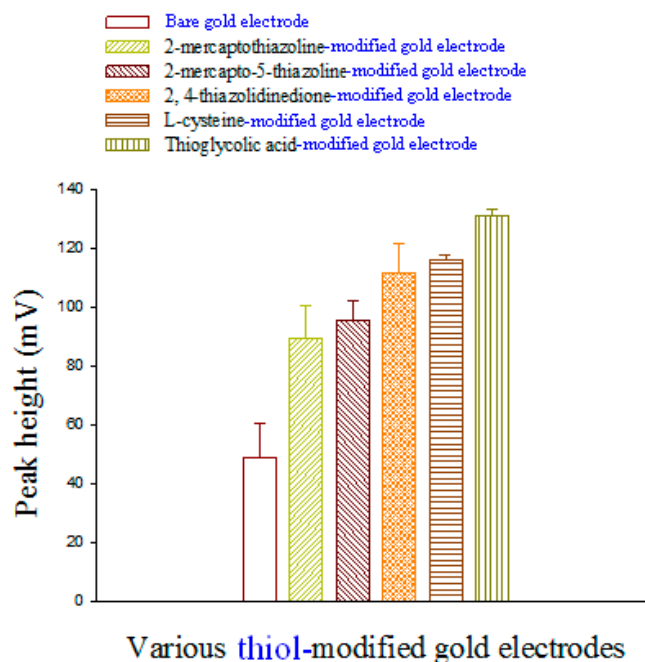


Figure 3. A comparison of an L-selenomethionine ($0.4 \text{ mg}\cdot\text{L}^{-1}$) bare gold electrode and various L-selenomethionine ($0.4 \text{ mg}\cdot\text{L}^{-1}$) thiol/Au electrodes in a flow-through voltammetric sensor; the mobile phase is methanol-water (10:90, v/v).

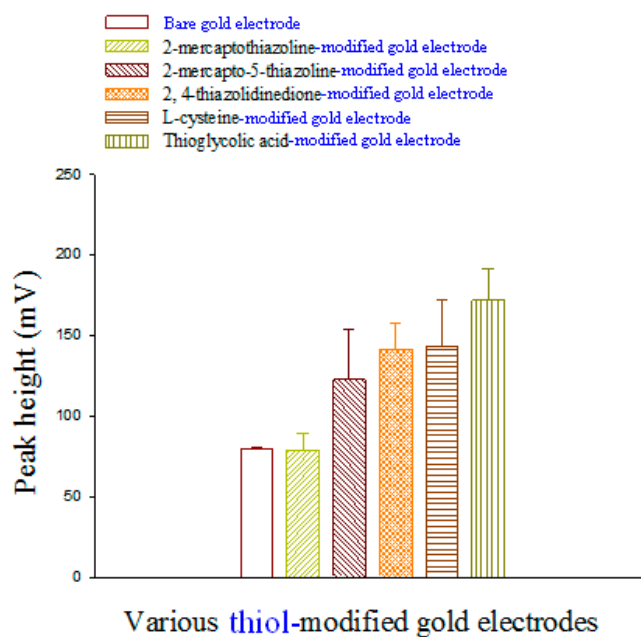


Figure 4. A comparison of a bare Se-methylselenocysteine ($0.4 \text{ mg}\cdot\text{L}^{-1}$) gold electrode and various Se-methylselenocysteine ($0.4 \text{ mg}\cdot\text{L}^{-1}$) thiol/Au electrodes in a flow-through voltammetric sensor; the mobile phase is methanol-water (10:90, v/v).

The voltammetric detector was operated at +1.2 V. Using the injection valve, 20 μL of the prepared standard solutions was chromatographed under the operating conditions described above. The lower limit of quantitative detection in our method was approximately 0.16 ng for L-selenomethionine and 0.07 ng for Se-methylseleno-L-cysteine. The calibration graph plots obtained by plotting the peak area against the concentrations of L-selenomethionine and Se-methylseleno-L-cysteine show good linearity over the range 10–1600 $\text{ng}\cdot\text{mL}^{-1}$ and 50–1600 $\text{ng}\cdot\text{mL}^{-1}$, respectively. The regression equations were $y = 157x + 4.5$ ($r = 0.9987$) for L-selenomethionine and $y = 322x - 7.8$ ($r = 0.9996$) for Se-methylseleno-L-cysteine. Chromatograms were obtained using LC-ECD and LC- ultraviolet detection (UVD) (wavelengths at 248 nm) (Figure 5A,B). LC-ECD is more specific and sensitive than LC-UVD.

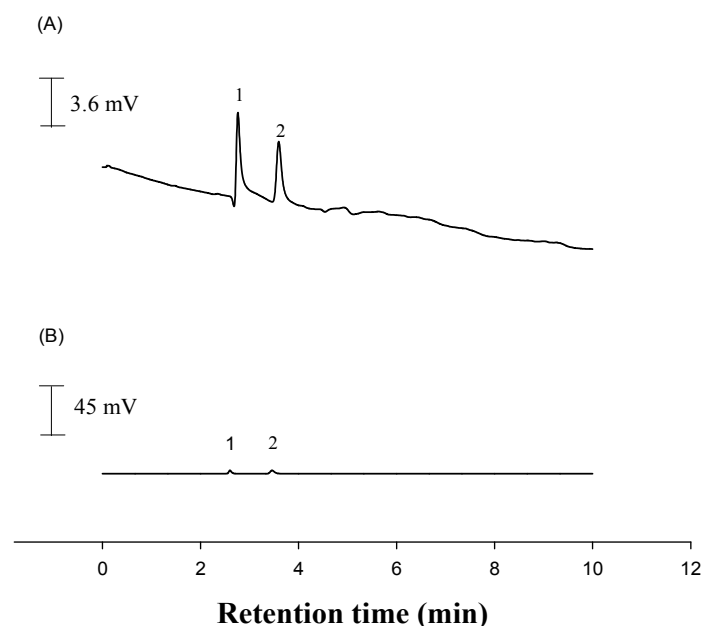


Figure 5. Chromatograms obtained using (A) liquid chromatography with electrochemical detection (LC-ECD) ($0.4 \text{ mg}\cdot\text{L}^{-1}$) and (B) LC- ultraviolet detection (UVD) ($20 \text{ mg}\cdot\text{L}^{-1}$). Peak 1 is Se-(methyl)seleno-L-cysteine; Peak 2 is L-selenomethionine, both in standard solution; LC-ECD at the TGA/Au electrode (1.2 V); LC-UVD at 248 nm. Analysis conditions are identical to those listed in Figure 3.

3.3. Accuracy and Precision

To test the applicability of the developed TGA/Au electrode, a commercial selenium supplement was analyzed using the standard addition method. Recovery tests were done on commercial selenium supplements to evaluate the reproducibility and accuracy of the proposed LC-ECD and LC-UVD methods. Each sample was diluted with methanol and water, and they were spiked with different concentrations of L-selenomethionine and Se-methylseleno-L-cysteine. The recoveries ranged from 97%–104% (LC-ECD) (Table 1). Hence, in this study, determining the concentration of selenoamino acids in commercial selenium supplements was done using a standard additions procedure (Table 2). These results agreed with those obtained using an LC-UVD. The sensitivity of LC-ECD was 680–1280-times greater than that of LC-UVD. In Samples 4 and 5, no Se-methylseleno-L-cysteine was detected because it was below the LC-UVD level of detection. Representative LC-ECD chromatograms (Figure 6A–C) for the selenium supplement sample are comparable to a chromatogram of pure standard. Inorganic selenium has various oxidation states (VI, IV, 0, –II) over a wide range of pH, and it appears primarily as selenite (Se (IV)) and selenate Se (VI)). The electrochemical behavior of inorganic selenium species, e.g., Se (IV) and Se (VI), requires Se (VI) to be reduced to Se (IV) and then done using stripping voltammetric techniques [38]. Sodium selenite is a major component of some commercial supplements,

e.g., Twinlab capsules (selenium 250 mcg) and Allergy Research Group selenium solution (selenium 100 mcg), but cannot be determined in our LC-ECD conditions. The diselenide forms cannot be detected in commercial products either, because they are first cleaved to yield an Se-Au adsorbate, and then, bulk selenocysteine is reduced on the modified electrode [39].

Table 1. Recovery of L-selenomethionine and Se-methylseleno-L-cysteine in spiked commercial selenium supplements using liquid chromatography with electrochemical detection (LC-ECD).

Samples	Added (mg·L ⁻¹)	Found ^a (mg·L ⁻¹) Mean ± SD ^b	Recovered (%)
L-selenomethionine			
Sample 1	0.5	0.486 ± 0.007	97.3
	1.0	1.014 ± 0.018	101
	2.0	1.985 ± 0.024	99.2
Sample 2	0.5	0.488 ± 0.046	97.6
	1.0	1.045 ± 0.069	104
	2.0	2.002 ± 0.040	100
Sample 3	0.5	0.507 ± 0.068	101
	1.0	1.036 ± 0.064	103
	2.0	1.993 ± 0.022	99.6
Se-methylseleno-L-cysteine ^b			
Sample 4	0.5	0.499 ± 0.023	99.8
	1.0	1.011 ± 0.031	101
	2.0	1.995 ± 0.013	99.7
Sample 5	0.5	0.549 ± 0.023	105
	1.0	1.031 ± 0.014	103
	2.0	2.034 ± 0.032	103

Data are the means of three measurements. ^a Number of determinations (N = 3), ^b SD, standard deviation.

Table 2. Analytical results of determination of L-selenomethionine and Se-methylseleno-L-cysteine in commercial selenium supplement products using liquid chromatography with electrochemical detection (LC-ECD) and ultraviolet detection (LC-UV).

Samples	L-selenomethionine		Se-methylseleno-L-cysteine ^b	
	Concentration (% w/w) N = 3 ^a		Concentration (% w/w) N = 3 ^a	
	LC-ECD	LC-UV	LC-ECD	LC-UV
Sample 1	0.035 ± (3.4)	0.036 ± (2.8)	- ^c	- ^c
Sample 2	0.101 ± (1.4)	0.102 ± (2.0)	- ^c	- ^c
Sample 3	0.131 ± (3.0)	0.133 ± (3.1)	- ^c	- ^c
Sample 4	- ^c	- ^c	0.138 ± (2.5)	- ^c
Sample 5	- ^c	- ^c	0.875 ± (0.4)	- ^c

^a Number of determinations (N = 3). ^b Values in parentheses indicate relative standard deviation. ^c Not determined.

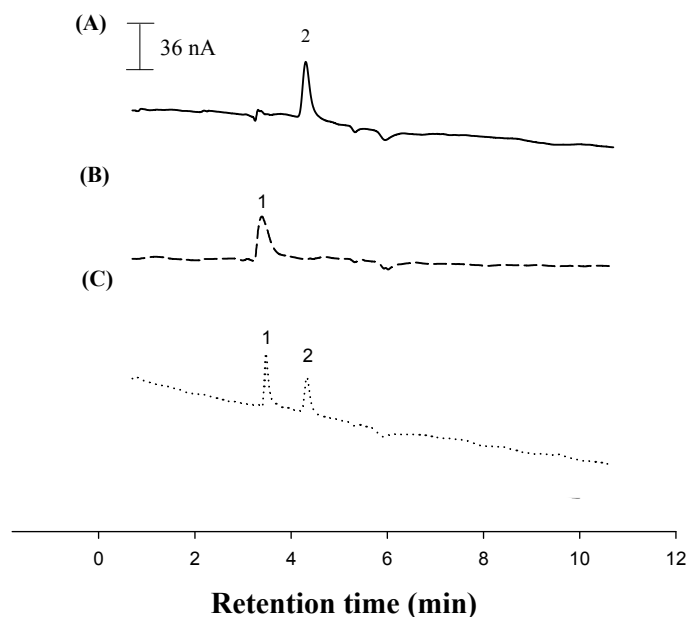


Figure 6. Chromatograms: Peak 1 is Se-(methyl)seleno-L-cysteine, and Peak 2 is L-selenomethionine obtained using a TGA/Au electrode. (A) The solid line is commercial L-selenomethionine-containing supplements; (B) the broken line is commercial Se-(methyl)seleno-L-cysteine-containing supplements; and (C) the dotted line is the standard solutions. Analysis conditions are identical to those listed in (Figure 3).

4. Conclusions

We have developed a sensitive, green electrochemical procedure for determining organic selenium using a flow-through voltammetric sensor. It exhibits a good analytical performance using a thiol/Au electrode for the LC-ECD of L-selenomethionine and Se-methylseleno-L-cysteine with a low limit of quantitation, a rapid response, a satisfactory linear range and good stability and selectivity. The presented electrode was simultaneously used to determine L-selenomethionine and Se-methylseleno-L-cysteine in a commercial selenium supplement.

Acknowledgments: This work was financially supported by the grant MOST 104-2113-M-041-001 from the Taiwan Ministry of Science and Technology.

Author Contributions: Lai-Hao Wang conceived, designed the experiments, analyzed the data, contributed reagents/materials/analysis tools and wrote the paper; Yu-Han Zhang performed the experiments.

Conflicts of Interest: The authors declare conflict of interest.

References

1. Rezvanfar, M.A.; Ahmadi, A.; Shojaei-Saadi, H.A.; Baeri, M.; Abdollahi, M. Molecular mechanisms of a novel selenium-based complementary medicine which confers protection against hyperandrogenism-induced polycystic ovary. *Theriogenology* **2012**, *78*, 620–631. [[CrossRef](#)] [[PubMed](#)]
2. Zeng, F.Y.; Zhou, H.Y.; Sun, T.W.; Wu, Y.Y. Bacteriostasis experiment in vitro of Se-enriched herbal medicine compound prescription to *Escherichia coli* and *Salmonella*. *J. Huber Inst. Natl. (Nat. Sci. Ed.)* **2007**, *25*, 199–202.
3. Shan, J.; Wang, X.; Ding, L.; Wei, H.; Sun, H. Advances in studies on biological functions of selenium and its determination method in Chinese herbal medicine. *Chin. Tradit. Herb. Drugs* **2003**, *34*, 280–283.
4. Xie, C.; Cui, J.; Fu, H. High-Energy Composite Peptide Selenoprotein Nutrient Solution, Preparation Method and Application Thereof PCT. U.S. Patent US20160009604 A1, 26 December 2013.
5. Kikkert, J.; Hale, B.; Berkelaar, E. Selenium accumulation in durum wheat and spring canola as a function of amending soils with selenite, selenate and or sulphate. *Plant Soil* **2013**, *372*, 629–641. [[CrossRef](#)]

6. Cheng, J.Z.; Yang, P.; Gui, R.Y. Research progress on speciation of selenium compounds in plants. *J. Zhejiang A F Univ.* **2012**, *29*, 288–295.
7. Kolachi, N.F.; Kazi, T.G.; Afridi, H.I.; Khan, S.; Baig, J.A.; Wadhwa, S.K.; Shah, A.Q.; Shah, F. Development of extraction methods for speciation analysis of selenium in aqueous extracts of medicinal plants. *J. AOAC Int.* **2011**, *94*, 1069–1075. [[PubMed](#)]
8. Kolachi, N.F.; Kazi, T.G.; Afridi, H.I.; Khan, S.; Wadhwa, S.K.; Shah, A.Q.; Shah, F.; Baig, J.A. Determination of selenium content in aqueous extract of medicinal plants used as herbal supplement for cancer patients. *Food Chem. Toxicol.* **2010**, *48*, 3327–3332. [[CrossRef](#)] [[PubMed](#)]
9. Qian, W.; Jiang, Q.; Wang, R.H.; Gong, H.; Han, Y. Determination of trace selenium in plants by hydride generation atomic fluorescence spectrometry with program temperature-controlled graphite digestion. *Spectrosc. Spectr. Anal.* **2014**, *34*, 235–240.
10. Deng, G.C.; Hou, S.M.; Mei, T.; Zhang, X.; Meng, W.; Yv, G.Y.; Zang, S.L. Speciation analysis of selenium in *Cordyceps militaris* by fluorescence spectrophotometry. *J. Anal. Sci.* **2006**, *22*, 21–24.
11. Zhou, X.L.; Yu, Z.; Zhen, S.; Lin, A.Q.; Chang, S. Microscopic identification and the content of selenium in *Gentiana rhodantha*. *North. Horticulture* **2014**, *2*, 156–158.
12. Kolachi, N.F.; Kazi, T.G.; Baig, J.A.; Kandhro, G.A.; Khan, S.; Afridi, H.I.; Kumar, S.; Shah, A.Q. Microwave-assisted acid extraction of selenium from medicinal plants followed by electrothermal atomic absorption spectrometric determination. *J. AOAC Int.* **2010**, *93*, 694–702. [[PubMed](#)]
13. Zhang, Y.; Frankenberger, W.T. Speciation of selenium in plant water extracts by ion exchange chromatography-hydride generation atomic absorption spectrometry. *Sci. Total Environ.* **2001**, *269*, 39–47. [[CrossRef](#)]
14. Zheng, Y.; Zheng, K.; Liu, E.; Li, Y. Elemental fingerprint of herbal medicines formed by inductively coupled plasma atomic emission spectroscopy (ICP-AES). *J. Eng. Sci. Technol. Rev.* **2013**, *6*, 111–114.
15. Yan, Q.; Yang, L.; Zhang, H.; Niu, L. Determination of mineral elements in fifteen medicinal herbs and their infusions by inductively coupled plasma atomic emission spectrometry. *Asian J. Chem.* **2012**, *24*, 899–902.
16. Montes-Bayon, M.; Diaz, M.; Maria, J.; Gonzalez, E.B.; Sanz-Medel, A. Evaluation of different sample extraction strategies for selenium determination in selenium-enriched plants (*Allium sativum* and *Brassica juncea*) and Se speciation by HPLC-ICP-MS. *Talanta* **2006**, *68*, 1287–1293. [[CrossRef](#)] [[PubMed](#)]
17. Chan, Q.; Afton, S.E.; Caruso, J.A. Selenium speciation profiles in selenite-enriched soybean (*Glycine Max*) by HPLC-ICPMS and ESI-ITMS. *Metallomics* **2010**, *2*, 147–153. [[CrossRef](#)] [[PubMed](#)]
18. Afton, S.; Kubachka, K.; Catron, B.; Caruso, J.A. Simultaneous characterization of selenium and arsenic analytes via ion-pairing reversed phase chromatography with inductively coupled plasma and electrospray ionization ion trap mass spectrometry for detection applications to river water, plant extract and urine matrices. *J. Chromatogr. A* **2008**, *1208*, 156–163. [[PubMed](#)]
19. Małgorzata, A.B.; Amund, M. Determination of selenium and its compounds in marine organisms. *J. Trace Elem. Med. Biol.* **2015**, *29*, 91–98.
20. Avila, F.W.; Yang, Y.; Faquin, V.; Ramos, S.J.; Guilherme, L.R.; Thannhauser, T.W.; Li, L. Impact of selenium supply on Se-methylselenocysteine and glucosinolate accumulation in selenium-biofortified *Brassica* sprouts. *Food Chem.* **2014**, *165*, 578–586. [[CrossRef](#)] [[PubMed](#)]
21. Gusmao, R.; Diaz-Cruz, J.M.; Arino, C.; Esteban, M. Chemometric analysis of voltammetric data on metal ion binding by selenocystine. *J. Phys. Chem. A* **2012**, *116*, 6526–6531. [[CrossRef](#)] [[PubMed](#)]
22. Bai, Y.; Wang, T.; Liu, Y.; Zheng, W. Electrochemical oxidation of selenocystine and selenomethionine. *Colloids Surf. B* **2009**, *74*, 150–153. [[CrossRef](#)] [[PubMed](#)]
23. Bai, Y.; Yan, X.; Zheng, W.; Li, R.; Cheng, T.; Ruan, X. The electrochemical reaction mechanism of selenocystine on selenium-gold film modified glassy carbon electrode. *Colloids Surf. B* **2006**, *49*, 112–116. [[CrossRef](#)] [[PubMed](#)]
24. Song, H.; Shu, Y.; Wang, Z.; Wan, Q. Preparation of 3-mercaptopropionic acid self-assembled gold electrode and its electrochemical investigations for UA. *J. Wuhan Inst. Technol.* **2011**, *33*, 20–26.
25. Phares, N.; White, R.J.; Plaxco, K.W. Improving the stability and sensing of electrochemical biosensors by employing trithiol-anchoring groups in a six-carbon self-assembled monolayer. *Anal. Chem.* **2009**, *81*, 1095–1100. [[CrossRef](#)] [[PubMed](#)]
26. Chen, Y.; Yang, X.J.; Guo, L.R.; Jin, B.; Xia, X.H.; Zheng, L.M. Direct electrochemistry of cytochrome c on a phosphonic acid terminated self-assembled monolayers. *Talanta* **2009**, *78*, 248–252. [[CrossRef](#)] [[PubMed](#)]

27. Park, J.Y.; Chang, B.Y.; Nam, H.; Park, S.M. Selective electrochemical sensing of glycated hemoglobin (HbA1c) on thiophene-3-boronic acid self-assembled monolayer covered gold electrodes. *Anal. Chem.* **2008**, *80*, 8035–8044. [[CrossRef](#)] [[PubMed](#)]
28. Szymanska, I.; Stobiecka, M.; Orlewska, C.; Rohand, T.; Janssen, D.; Dehaen, W.; Radecka, H. Electroactive dipyrromethene-Cu(II) self-assembled monolayers: Complexation reaction on the surface of gold electrodes. *Langmuir* **2008**, *24*, 11239–11245. [[CrossRef](#)] [[PubMed](#)]
29. Fragoso, A.; Laboria, N.; Latta, D.; O’Sullivan, C.K. Electron permeable self-assembled monolayers of dithiolated aromatic scaffolds on gold for biosensor applications. *Anal. Chem.* **2008**, *80*, 2256–2563. [[CrossRef](#)] [[PubMed](#)]
30. Shamsipur, M.; Kazemi, S.H.; Alizadeh, A.; Mousavi, M.F.; Workentin, M.S. Self-assembled monolayers of a hydroquinone-terminated alkanethiol onto gold surface. Interfacial electrochemistry and Michael-addition reaction with glutathione. *J. Electroanal. Chem.* **2007**, *610*, 218–226. [[CrossRef](#)]
31. Feng, G.; Niu, T.; You, X.; Wan, Z.; Kong, Q.; Bi, S. Studies on the effect of electrode pretreatment on the coverage of self-assembled monolayers of dodecanethiol on gold by electrochemical reductive desorption determination. *Analyst* **2011**, *136*, 5058–5063. [[CrossRef](#)] [[PubMed](#)]
32. Zhang, S.; Peng, T.; Yang, C.F. A piezoelectric gene-sensor using actinomycin D-functionalized nano-microspheres as amplifying probes. *J. Electroanal. Chem.* **2002**, *522*, 152–157. [[CrossRef](#)]
33. Baldrich, E.; Laczka, O.; Del Campo, F.J.; Munoz, F.X. Gold immuno-functionalisation via self-assembled monolayers: Study of critical parameters and comparative performance for protein and bacteria detection. *J. Immun. Methods* **2008**, *336*, 203–212. [[CrossRef](#)] [[PubMed](#)]
34. Shaporenko, A.; Muller, J.; Weidner, J.; Terfort, A.; Zhamikov, M. Balance of Structure-Building Forces in Selenium-Based Self-Assembled Monolayers. *J. Am. Chem. Soc.* **2007**, *129*, 2232–2233. [[CrossRef](#)] [[PubMed](#)]
35. Llave, E.; Scherlis, D. Selenium-Based Self-Assembled Monolayers: The Nature of Adsorbate-Surface Interactions. *Langmuir* **2010**, *26*, 173–178. [[CrossRef](#)] [[PubMed](#)]
36. Subramanian, S.; Sampath, S. Enhanced stability of short- and long-chain diselenide self-assembled monolayers on gold probed by electrochemistry, spectroscopy, and microscopy. *J. Colloids Interface Sci.* **2007**, *312*, 413–424. [[CrossRef](#)] [[PubMed](#)]
37. Wang, L.H.; Li, W.J. Studies on the Electrochemical Behavior of Thiazolidine and Its Applications Using a Flow-Through Chronoamperometric Sensor Based on a Gold Electrode. *Molecules* **2011**, *16*, 7608–7620. [[CrossRef](#)] [[PubMed](#)]
38. Maria, O.P.; Fotis, T. Speciation analysis of selenium using voltammetric techniques. *Anal. Chim. Acta* **2002**, *467*, 167–178.
39. Walker, L.M.; Karnaukh, E.A.; Dewan, F.; Buzzeo, M.C. Voltammetric behavior of selenocystine at modified gold substrates. *Electrochem. Commun.* **2016**, *69*, 28–31. [[CrossRef](#)]

