

BMJ Open Pilot test of the Healthy Food Environment Policy Index (Food-EPI) to increase government actions for creating healthy food environments

Stefanie Vandevijvere, Boyd Swinburn, for International Network for Food and Obesity/non-communicable diseases (NCDs) Research, Monitoring and Action Support (INFORMAS)

To cite: Vandevijvere S, Swinburn B, for International Network for Food and Obesity/non-communicable diseases (NCDs) Research, Monitoring and Action Support (INFORMAS). Pilot test of the Healthy Food Environment Policy Index (Food-EPI) to increase government actions for creating healthy food environments. *BMJ Open* 2015;**5**:e006194. doi:10.1136/bmjopen-2014-006194

► Prepublication history for this paper is available online. To view these files please visit the journal online (<http://dx.doi.org/10.1136/bmjopen-2014-006194>).

Received 24 July 2014
Revised 30 October 2014
Accepted 28 November 2014



CrossMark

University of Auckland,
School of Population Health,
Auckland, New Zealand

Correspondence to
Dr Stefanie Vandevijvere;
s.vandevijvere@auckland.ac.nz

ABSTRACT

Objectives: Effective government policies are essential to increase the healthiness of food environments. The International Network for Food and Obesity/non-communicable diseases (NCDs) Research, Monitoring and Action Support (INFORMAS) has developed a monitoring tool (the Healthy Food Environment Policy Index (Food-EPI)) and process to rate government policies to create healthy food environments against international best practice. The aims of this study were to pilot test the Food-EPI, and revise the tool and process for international implementation.

Setting: New Zealand.

Participants: Thirty-nine informed, independent public health experts and non-governmental organisation (NGO) representatives.

Primary and secondary outcome measures:

Evidence on the extent of government implementation of different policies on food environments and infrastructure support was collected in New Zealand and validated with government officials. Two whole-day workshops were convened of public health experts and NGO representatives who rated performance of their government for seven policy and seven infrastructure support domains against international best practice. In addition, the raters evaluated the level of difficulty of rating, and appropriateness and completeness of the evidence presented for each indicator.

Results: Inter-rater reliability was 0.85 (95% CI 0.81 to 0.88; Gwet's AC2) using quadratic weights, and increased to 0.89 (95% CI 0.85 to 0.92) after deletion of the problematic indicators. Based on raters' assessments and comments, major changes to the Food-EPI tool include strengthening the leadership domain, removing the workforce development domain, a stronger focus on equity, and adding community-based programmes and government funding for research on obesity and diet-related NCD prevention, as good practice indicators.

Conclusions: The resulting tool and process will be promoted and offered to countries of varying size and income globally. International benchmarking of the extent of government policy implementation on food

Strengths and limitations of this study

- The Healthy Food Environment Policy Index (Food-EPI) assesses the extent of implementation of government policies on food environments; no similar tools are currently available.
- The Food-EPI has the potential to catalyse government action and lift engagement of non-governmental organisations and researchers.
- Although experts from low-income and middle-income countries revised the tool in its development phase, further testing in those settings is recommended.
- More international best practice exemplars need to be collected for the infrastructure support indicators.
- Evidence of impact of best practice policies on reducing obesity and diet-related non-communicable diseases is currently limited.

environments has the potential to catalyse greater government action to reduce obesity and NCDs, and increase civil society's capacity to advocate for healthy food environments.

INTRODUCTION

Effective government policies and actions are essential to increase the healthiness of food environments (such as food composition, labelling, promotion, prices, provision and availability) and reduce obesity, diet-related non-communicable diseases (NCDs) and their related inequalities.¹ According to the latest report from the Organisation for Economic Co-operation and Development (OECD), over half of the adults and one in five children are now overweight or obese in the OECD countries. A nearly 10-fold variation in rates of obesity and overweight is observed among those countries.² Serious

action from governments and the food industry to improve food environments has been slow and inadequate, in part due to the successful pressure of commercial food and media sectors on governments.^{3–5} In addition, difficulties providing robust evidence on the likely effectiveness of policies before they have been introduced, and competition for resources between public health preventive services and other government-provided services may have played a role.⁶ However, some governments have recently demonstrated leadership and taken thoughtful actions, which may serve as good or best practice exemplars or benchmarks for other countries globally. Some non-exhaustive, topical examples include the approval of mandatory multiple traffic lights front-of-pack labelling in Ecuador, the soda and junk food tax recently implemented in Mexico, warning labels on high fat, sugar and salt foods approved in Chile, and legislation approved on maximum sodium levels in different categories of foods in South Africa and Argentina.⁷ Some Pacific island countries increased import and excise tariffs on sugar-sweetened beverages, other high-sugar products and palm oil and lowered tariffs on fruits and vegetables.⁸

The International Network for Food and Obesity/NCDs Research, Monitoring and Action Support (INFORMAS)⁹ was recently founded to monitor and benchmark food environments, government policies and private sector actions and practices globally. Food environments are defined as the collective physical, economic, policy and sociocultural surroundings, opportunities and conditions that influence people's food and beverage choices and nutritional status.⁹ INFORMAS aims to complement existing monitoring efforts of the WHO, such as the global NCD monitoring framework, which is deficient with regard to those more upstream indicators.¹⁰ This is a serious gap because current food environments are driving unhealthy diets and energy overconsumption.^{11 12}

INFORMAS has developed a monitoring tool (the Healthy Food Environment Policy Index (Food-EPI)) and process to assess government policies and actions for creating healthy food environments against international best practice. The Food-EPI has been developed based on a review of policy documents and consultation with international experts, including experts from low-income and middle-income countries. Full details on the development of the Food-EPI have been described elsewhere.¹³ The Food-EPI comprises a 'policy' component with seven domains on specific aspects of food environments (food composition, labelling, promotion, provision, retail, prices, trade) that can be acted on by governments as well as the private sector to increase the healthiness of food environments, and an 'infrastructure support' component with seven domains (leadership, governance, funding and resources, monitoring and intelligence, workforce development, platforms for interaction and health-in-all-policies) to strengthen systems to prevent obesity and NCDs. The domains included in the 'infrastructure support' component are based on the WHO 'system

building blocks' approach for health systems.¹⁴ The proposed Food-EPI tool is consistent with, and supportive of, the list of proposed policy options for member states included in the WHO's Global Action Plan for the Prevention and Control of Non-Communicable Diseases (2013–2020)¹⁰ and the World Cancer Research Fund (WCRF) International NOURISHING Food Policy Framework for Healthy Diets.^{1 7} A set of good practice indicators has been proposed within each domain and these will evolve into benchmarks established by governments at the forefront of creating and implementing food policies for good health.

A rating process is proposed to assess a government's level of policy and infrastructure support implementation towards best practice.¹³ A process for rating government action on obesity prevention has previously been used in Australia,¹⁵ whereby informed, non-government public health experts annually rate their state government's recent progress on obesity prevention against a series of good practice indicators. The media coverage and responses from bureaucrats and politicians indicated that the award stimulated discussion within their jurisdictions.¹⁵ The Food-EPI,¹³ however, will assess current levels of policy implementation rather than recent progress over time, as the latter may disadvantage governments that already made good progress.

A similar initiative to monitor actions and practices of private sector companies is the Access to Nutrition Index (ATNI),¹⁶ which has rated and benchmarked 25 of the world's largest food and beverage manufacturers on their commitments, performance and disclosure practices globally related to obesity and undernutrition across seven different categories (governance, products, accessibility, marketing, labelling, lifestyles and engagement). It was launched for the first time in 2013 and will be published every 2 years to track and encourage improvements in companies' nutrition practices. One of the INFORMAS modules aims to evaluate the extent of implementation of priority actions by the food industry in countries globally.¹⁷

The aim of this study was to pilot test the Food-EPI tool and process for the first time in New Zealand and to revise the tool and rating process for implementation in countries of varying size and income. The aim is for the Food-EPI process to be repeated regularly (depending on governments' terms) in order to check progress over time and against international best practice.

MATERIALS AND METHODS

The tools, methods and processes used in this study have been approved by the University of Auckland Human Participants Ethics Committee (reference number 9326).

Establishment of the national Expert Panel

A comprehensive group of informed, non-government public health and nutrition experts and academics, and representatives of relevant public health organisations

(eg, *National Heart Foundation, Cancer Society, Nutrition Society, Nutrition Foundation, Dieticians New Zealand, Diabetes New Zealand, Kidney Health, Public Health Association of New Zealand, New Zealand Medical Association, Agencies for Nutrition Action, Stroke Foundation of New Zealand*) were invited to form a New Zealand Expert Panel on food policy. Since obesity and diet-related NCDs are very high among Māori and Pacific populations, it was ensured that there was strong representation from these organisations as well (*Pacific HeartBeat, Te Hotu Manawa Māori, Te Rōpu Mate Huka o Atearoa, Toi Tangata*). The national Expert Panel excludes individuals working for government or the food industry. Having a broad range of public health nutrition organisations and experts within this group could ultimately increase the power of civil society to hold governments to account for their actions and policies on food environments. All participants signed an informed consent form and declared their conflicts of interest.

Compilation of evidence on the extent of government policy implementation

Evidence on the extent of government implementation of actions, policies and infrastructure support systems was collected during the period February–August 2013 for all good practice indicators within the 14 Food-EPI domains (table 1, column 2) for the current government's term.

Searches for government documents and budget information were conducted on governmental websites, libraries, via contact with government officials and via submission of official information requests (Official Information Act 1982). Most assessments were on the current level of implementation (ie, status over the past 3 years), but the infrastructure support domain on 'monitoring and intelligence' needed to take a longer view, since some of the surveys (eg, food consumption surveys) might be too expensive to run every 3 years.

The evidence collection focused on the national government, but took into account government policies, actions and infrastructure support systems at subnational levels where relevant (eg, funding for population nutrition promotion and actions in the domain of food retail by councils, public health units and district health boards in New Zealand) in order to avoid underestimation of implementation. The output from this step was a report of notated evidence related to each of the good practice indicators within the 14 Food-EPI domains (44 pages, available on request). An example of the good practice indicator on front-of-pack labelling within the labelling domain is given in box 1.

Validation of evidence with government officials

The evidence collected was fed back to government officials in relevant departments (*Ministry of Health, Ministry for Primary Industries, Ministry of Education, Ministry of Foreign Affairs and Trade and Ministry for Social Development, State Services Commission*) and agencies (*Health Promotion*

Agency) to verify its completeness and accuracy. Personal meetings were held with each of the Ministries during August 2013. The evidence was then updated and finalised during September–October 2013 for presentation to the raters during the rating workshops.

International benchmarks

International benchmarks for the good practice indicators within the different Food-EPI domains were mainly derived from the World Cancer Research Fund NOURISHING database¹⁷ and from international experts.

Rating workshops

All individuals within the national Expert Panel were invited to participate in one of two whole-day workshops, one in Auckland and one in Wellington in November 2013. They underwent a short training session on how to assess the current level of government policy implementation for each of the good practice indicators.

Government officials were present as observers during the workshops. During the workshops, the good practice, the evidence on the extent of implementation and the benchmarks were presented separately for each domain and good practice indicator. After some plenary discussions on the evidence presented, each rater independently scored the current degree of implementation towards best practice for each indicator on a scale from 1 to 5 (1=less than 20% implementation, 2=20–40% implementation, 3=40–60% implementation, 4=60–80% implementation, 5=80–100% implementation) using Qwizdom Actionpoint, which is a PowerPoint Add-in allowing users to make their presentations interactive by posing questions. 'Cannot rate' was also an option. In addition, the raters evaluated the level of difficulty to rate and the appropriateness and completeness of the evidence presented on a scale from 1 to 5 for each of the good practice indicators. An example of the rating questionnaire for the domain on 'food labelling' is presented in table 2 and for the domain on 'leadership' in table 3.

During the second part of the workshop, the distribution of ratings was presented for each of the good practice indicators and major issues related to clarity, policy relevance, appropriateness and content of the good practice indicators, difficulty of rating, appropriateness and completeness of evidence presented were discussed in plenary.

The discussion of the two workshops was then synthesised and summarised (23 pages, available on request).

Data analysis

The Gwet AC2 inter-rater reliability coefficient and its variance were determined by calculating the percentage of agreement between the raters using quadratic weights.¹⁸ The AC1 statistic (AC2 for ordinal ratings) has been proposed by Gwet¹⁸ as an alternative to the unstable κ coefficient, which relies on a chance-agreement probability expression that is valid only under the improbable assumption that all ratings are known to be independent.

Table 1 List of original (including average rater scores) and adapted good practice indicators for the seven food policy and the seven infrastructure support domains of the Healthy Food Environment Policy Index (Food-EPI)

Domains	Original good practice indicator	Adapted good practice indicator
1. FOOD COMPOSITION <i>Original:</i> There are government systems implemented to ensure that, where practicable, processed foods minimise the energy density and the unhealthy nutrients of concern (eg, salt, saturated and trans fats, and added sugars) and maximise the healthy components (eg, whole grains, fruits and vegetables) <i>Adapted:</i> There are government systems implemented to ensure that, where practicable, processed foods minimise the energy density and the nutrients of concern	<p>COMP 1 Clear population intake targets, with appropriate strategies, have been established for the unhealthy nutrients of concern (usually salt, saturated and trans fats, and/or added sugar) to meet WHO and national recommended dietary intake levels (<i>average score</i>=1.77±0.84)</p> <p>COMP 2 Food composition targets/standards have been established by the government for the content of unhealthy nutrients of concern (usually salt, fat, saturated and trans fat and/or added sugar) in certain foods or food groups if they are major contributors to population intakes of these nutrients (eg, trans fats in processed foods, salt in bread, saturated fat in commercial frying fats (<i>average score</i>=1.36±0.67)</p> <p>COMP 3 There is a transparent implementation plan, led by government, to achieve improvements in energy density of the diet, food composition and population nutrient intakes for the specified unhealthy nutrients of concern (<i>average score</i>=1.00±0.00)</p> <p>COMP 4 Monitoring systems are in place to regularly check progress on improving food composition towards food composition guidelines/standards and population intakes towards specified intake targets or recommended daily intake levels (<i>average score</i>=2.79±1.06)</p>	<p>COMP 1 Food composition targets/standards have been established by the government for the content of the nutrients of concern in certain foods or food groups if they are major contributors to population intakes of these nutrients (eg, trans fats in processed foods, salt in bread, saturated fat in commercial frying fats)</p>
2. FOOD LABELLING <i>Original:</i> There is a consumer-oriented regulatory system implemented for labelling on food packaging and menu boards in restaurants to enable consumers to easily make informed food choices and to prevent misleading claims <i>Adapted:</i> There is a regulatory system implemented by the government for consumer-oriented labelling on food packaging and menu boards in restaurants to enable consumers to easily make informed food choices and to prevent misleading claims	<p>LABEL 1 Ingredient lists and nutrient declarations in line with Codex recommendations (plus trans fats and added sugar) are present on the labels of all processed foods (<i>average score</i>=3.74±0.97)</p> <p>LABEL 2 Robust, evidence-based regulatory systems are in place for approving/reviewing claims on foods, so that consumers are protected against unsubstantiated and misleading nutrition and health claims (<i>average score</i>=3.87±0.74)</p> <p>LABEL 3 A single, consistent, interpretive, evidence-informed front-of-pack supplementary nutrition information system, which readily allows consumers to assess a product's healthiness, is</p>	<p>LABEL 1 Ingredient lists and nutrient declarations in line with Codex recommendations are present on the labels of all packaged foods.</p> <p>LABEL 2 Robust, evidence-based regulatory systems are in place for approving/reviewing claims on foods, so that consumers are protected against unsubstantiated and misleading nutrition and health claims</p> <p>LABEL 3 A single, consistent, interpretive, evidence-informed front-of-pack supplementary nutrition information system, which readily allows consumers to assess a product's healthiness, is applied to all packaged foods.</p>

Continued

Table 1 Continued

Domains	Original good practice indicator	Adapted good practice indicator
	applied to all processed foods (<i>average score</i> =1.21±0.47) LABEL 4 A consistent, single, simple, clearly-visible system of labelling the menu boards of all quick service restaurants (ie, fast food chains) is applied, which allows consumers to interpret the nutrient quality and energy content of foods and meals on sale (<i>average score</i> =1.05±0.23)	LABEL 4 A consistent, single, simple, clearly-visible system of labelling the menu boards of all quick service restaurants (ie, fast food chains) is applied by the government, which allows consumers to interpret the nutrient quality and energy content of foods and meals on sale
3. FOOD PROMOTION <i>Original:</i> There is a comprehensive policy implemented to reduce the impact (exposure and power) of promotion of unhealthy foods and beverages (high in saturated fats, trans fats, added sugars and/or salt) to children (eg, <16 years) across all media <i>Adapted:</i> There is a comprehensive policy implemented by the government to reduce the impact (exposure and power) of promotion of unhealthy foods to children (<16 years) across all media	PROMOT1 Effective policies are in place to restrict exposure and power of promotion of unhealthy foods to children through all forms of media, including broadcast (TV, radio) and non-broadcast media (eg, Internet, point-of-purchase, packaging, sponsorship, outdoor advertising) (<i>average score</i> =1.08±0.27) PROMOT2 Effective policies are in place to ensure that the settings where children gather (eg, preschools, schools, sporting grounds, cultural activities) are free from all forms of promotion of unhealthy foods (<i>average score</i> =1.00±0.00) PROMOT3 Where cross-border broadcasts exist, there are effective systems in place to reduce the impact of marketing of unhealthy foods to children from non-terrestrial media PROMOT4 There are effective systems in place for the monitoring, evaluation and enforcement of marketing regulations to ensure their effectiveness in reducing the impact on children. In case of self-regulatory approaches, these are comprehensively monitored and evaluated (<i>average score</i> =1.08±0.49)	PROMOT1 Effective policies are implemented by the government to restrict exposure and power of promotion of unhealthy foods to children through all forms of media, including broadcast (TV, radio) and non-broadcast media (eg, Internet, social media, point-of-purchase, product placement, packaging, sponsorship, outdoor advertising) PROMOT2 Effective policies are implemented by the government to ensure that unhealthy foods are not commercially promoted to children in settings where children gather (eg, preschools, schools, sport and cultural events)
4. FOOD PRICES <i>Original:</i> Food pricing policies (eg, taxes and subsidies) are aligned with health outcomes by helping to make the healthy eating choices the easier, cheaper choices <i>Adapted:</i> same	PRICES 1 Taxes on healthy foods are minimised to encourage healthy choices taking into account tax system efficiency, feasibility and distributional effects (eg, low or no sales tax, excise or import duties on fruit and vegetables) (<i>average score</i> =1.05±0.32) PRICES 2 Taxes on unhealthy foods (eg, sugar-sweetened beverages) are introduced to discourage unhealthy choices taking into account tax system efficiency, feasibility and distributional effects (<i>average score</i> =1.00±0.00) PRICES 3 Any subsidies on foods, including infrastructure funding support (eg, research and	PRICES 1 Taxes on healthy foods are minimised to encourage healthy food choices where possible (eg, low or no sales tax, excise, value-added or import duties on fruit and vegetables) PRICES 2 Taxes on unhealthy foods (eg, sugar-sweetened beverages, foods high in nutrients of concern) are in place to discourage unhealthy food choices where possible, and these taxes are reinvested to improve population health PRICES 3 The intent of existing subsidies on foods, including infrastructure funding support (eg, research and development, supporting markets or transport

Continued

Table 1 Continued

Domains	Original good practice indicator	Adapted good practice indicator
	development, supporting markets or transport systems), favour foods which are recommended in dietary guidelines rather than processed foods high in energy density, salt, fats, saturated and trans fats and/or added sugars PRICES 4 Mechanisms are in place to ensure that food-related social support programs (eg, food stamps or other food assistance programmes) are for healthy foods (<i>average score=2.00±0.69</i>)	systems), is to favour healthy rather than unhealthy foods PRICES 4 The government ensures that food-related income support programmes (eg, food stamps or other food assistance programmes) are for healthy foods
5. FOOD PROVISION <i>Original:</i> There are healthy food service policies implemented in government-funded settings (eg, government departments and agencies, publicly funded schools, early childhood services, hospitals and prisons) to ensure that food provision encourages dietary choices aligned with dietary guidelines, and that government actively encourages and supports private companies to implement similar policies <i>Adapted:</i> The government ensures that there are healthy food service policies implemented in government-funded settings to ensure that food provision encourages healthy food choices, and that government actively encourages and supports private companies to implement similar policies	PROV 1 There are clear, consistent policies in schools which require food service activities (canteens, food at events, fundraising, promotions, vending machines, etc) to provide and promote healthy food choices consistent with dietary guidelines (<i>average score=1.33±0.74</i>) PROV 2 There are clear, consistent policies in other public sector settings (eg, government departments, hospitals, preschool settings) which require food service activities (canteens, food at events, fundraising, promotions, vending machines, etc) to provide and promote healthy food choices consistent with dietary guidelines (<i>average score=1.56±0.82</i>) PROV 3 There are good support and training systems in place to help schools and other public sector organisations (and interested private sector organisations) and their caterers meet the healthy food service policies and guidelines (<i>average score=2.54±0.72</i>) PROV 4 Regular monitoring/reporting systems are in place to monitor the implementation of the policies (eg, included in schools reporting requirements, periodic surveys of food services (<i>average score=1.08±0.27</i>)) PROV 5 Government actively encourages and supports private companies to provide and promote healthy foods and meals in their workplaces (<i>average score=1.18±0.45</i>)	PROV 1 The government ensures that there are clear, consistent policies (including nutrition standards) implemented <i>in schools and early childhood education services</i> for food service activities (canteens, food at events, fundraising, promotions, vending machines, etc) to provide and promote healthy food choices PROV 2 The government ensures that there are clear, consistent policies <i>in other public sector settings</i> for food service activities (canteens, food at events, fundraising, promotions, vending machines, etc) to provide and promote healthy food choices PROV 3 The government ensures that there are good support and training systems to help schools and other public sector organisations and their caterers meet the healthy food service policies and guidelines PROV 4 The government actively encourages and supports private companies to provide and promote healthy foods and meals in their workplaces
6. FOOD RETAIL <i>Original:</i> There are policies and programmes implemented to support the availability of healthy foods and limit the availability of unhealthy foods in communities (outlet density and proximity) and in-store (product placement)	RETAIL 1 Zoning laws and policies are robust enough and are being used, where needed, by (local) governments to ensure that there is a ready availability of outlets selling fresh fruit and vegetables (<i>average score=1.42±0.83</i>)	RETAIL 1 Zoning laws and policies are robust enough and are being used, where needed, by local governments to place limits on the density or placement of quick serve restaurants or other outlets selling mainly unhealthy foods in communities

Continued

Table 1 Continued

Domains	Original good practice indicator	Adapted good practice indicator
<p><i>Adapted:</i> The government has the power to implement policies and programmes to support the availability of healthy foods and limit the availability of unhealthy foods in communities (outlet density and locations) and in-store (product placement)</p>	<p>RETAIL 2 Zoning laws and policies are robust enough and are being used, where needed, by local governments to place limits on the density or placement of quick serve restaurants or other outlets selling mainly unhealthy foods in communities (<i>average score=1.11±0.51</i>)</p> <p>RETAIL 3 There are existing support systems to encourage food stores to promote the in-store availability of healthy foods and to limit the in-store availability of unhealthy foods (<i>average score=1.16±0.55</i>)</p>	<p>RETAIL 2 There are existing support systems to encourage food stores to promote the in-store availability of healthy foods and to limit the in-store availability of unhealthy foods</p>
<p>7. FOOD TRADE AND INVESTMENT</p> <p><i>Original:</i> Trade and investment agreements protect food sovereignty, favour healthy food environments, are linked with domestic health and agricultural policies and do not promote unhealthy food environments</p> <p><i>Adapted:</i> The government ensures that trade and investment agreements protect food sovereignty, favour healthy food environments, are linked with domestic health and agricultural policies in ways that are consistent with health objectives, and do not promote unhealthy food environments</p>	<p>TRADE 1 The direct and indirect impacts of international trade and investment agreements on food environments and population nutrition and health are assessed and considered (<i>average score=1.11±0.45</i>)</p> <p>TRADE 2 The government adopts proactive measures to manage investment and protect their regulatory capacity with respect to public health nutrition (<i>average score=1.09±0.52</i>)</p>	<p>TRADE 1 The direct and indirect impacts of international trade and investment agreements on food environments and population nutrition and health are assessed and considered</p> <p>TRADE 2 The government adopts proactive measures to manage investment and protect their regulatory capacity with respect to public health nutrition</p>
<p>8 LEADERSHIP</p> <p><i>Original:</i> The political leadership ensures that there is strong support for the vision, planning, communication, implementation and evaluation of policies and actions to create healthy food environments, improve population nutrition, and reduce diet-related inequalities</p> <p><i>Adapted:</i> same</p>	<p>LEAD 1 There is strong, visible, political support (at the Head of State/Cabinet level) for improving food environments, population nutrition and diet-related NCDs and their related inequalities (<i>average score=1.21±0.47</i>)</p> <p>LEAD 2 There is a comprehensive, up-to-date plan (including targets, priority policy and programme strategies) linked to national needs and priorities to improve food environments, population nutrition, diet-related NCDs and their related inequalities (<i>average score=1.00±0.00</i>)</p> <p>LEAD 3 Priorities are given to reduce inequalities in relation to diet, nutrition, obesity and NCDs in the comprehensive plan (above) and the government generally (<i>average score=1.97±0.82</i>)</p>	<p>LEAD 1 There is strong, visible, political support (at the Head of State/Cabinet level) for improving food environments, population nutrition, diet-related NCDs and their related inequalities</p> <p>LEAD 2 Clear population intake targets have been established by the government for the nutrients of concern to meet WHO and national recommended dietary intake levels</p> <p>LEAD 3 Clear, interpretive, evidence-informed food-based dietary guidelines have been established and implemented</p> <p>LEAD 4 There is a comprehensive, transparent, up-to-date implementation plan (including priority policy and programme strategies, social marketing for public awareness and threat of legislation for voluntary approaches) linked to national needs and priorities, to improve food environments, reduce the intake of the nutrients of concern to meet WHO and national recommended dietary intake levels, and reduce</p>

Continued

Table 1 Continued

Domains	Original good practice indicator	Adapted good practice indicator
<p>9. GOVERNANCE</p> <p><i>Original:</i> Governments have structures in place to ensure transparency and accountability, and encourage broad community participation and inclusion when formulating and implementing policies and actions to create healthy food environments, improve population nutrition, and reduce diet-related inequalities</p> <p><i>Adapted:</i> Governments have structures in place to ensure transparency and accountability, and encourage broad community participation and inclusion when formulating and implementing policies and actions to create healthy food environments, improve population nutrition and reduce diet-related inequalities</p>	<p>GOVER 1 There are robust procedures to restrict commercial influences on the development of policies related to food environments where they have conflicts of interest with improving population nutrition (<i>average score=1.75±0.87</i>)</p> <p>GOVER 2 Policies and procedures are implemented for using evidence and ensuring transparency in the development of food policies (<i>average score=1.75±0.73</i>)</p> <p>GOVER 3 The government ensures access to and regular dissemination of nutrition information and key documents (budget documents, annual performance reviews and health indicators) to the public (<i>average score=3.00±1.08</i>)</p> <p>GOVER 4 The government fosters civil society participation to develop and implement healthy food environment policies, and the cooperation and coordination of all sectors to align with strategic plans (<i>average score=2.28±0.85</i>)</p>	<p>diet-related NCDs</p> <p>LEAD 5 Government priorities have been established to reduce inequalities in relation to diet, nutrition, obesity and NCDs</p> <p>GOVER 1 There are robust procedures to restrict commercial influences on the development of policies related to food environments where they have conflicts of interest with improving population nutrition</p> <p>GOVER 2 Policies and procedures are implemented for using evidence in the development of food policies</p> <p>GOVER 3 Policies and procedures are implemented for ensuring transparency in the development of food policies</p> <p>GOVER 4 The government ensures access to comprehensive nutrition information and key documents (eg, budget documents, annual performance reviews and health indicators) for the public</p>
<p>10. MONITORING AND INTELLIGENCE</p> <p><i>Original:</i> The government's monitoring and intelligence systems (surveillance, evaluation, research and reporting) are comprehensive and regular enough to assess the status of food environments, population nutrition and diet-related NCDs and their inequalities, and to measure progress on achieving the goals of nutrition and health plans</p> <p><i>Adapted:</i> same</p>	<p>MONIT 1 Regular monitoring of food environments (eg, ideally annual with a maximum of every 5 years for more expensive surveys (<i>average score=1.70±0.74</i>))</p> <p>MONIT 2 Regular monitoring of adult and childhood nutrition status and food consumption (eg, ideally annual with a maximum of every 5 years for more expensive surveys (<i>average score=2.46±1.24</i>))</p> <p>MONIT 3 Regular (eg, ideally annual with a maximum of every 5 years for more expensive surveys) monitoring of adult and childhood weight and height, waist circumference, overweight and obesity prevalence (<i>average score=3.76±1.26</i>)</p> <p>MONIT 4 Regular monitoring of the prevalence of NCD risk factors and occurrence rates (eg, prevalence, incidence, mortality) for the main diet-related NCDs and their related inequalities (eg, ideally annual with a</p>	<p>MONIT 1 Monitoring systems, implemented by the government, are in place to regularly monitor food environments (especially for food composition for nutrients of concern, food promotion to children and nutritional quality of food in schools and other public sector settings), against codes/guidelines/standards/targets</p> <p>MONIT 2 There is regular monitoring of adult and childhood nutrition status and population intakes against specified intake targets or recommended daily intake levels.</p> <p>MONIT 3 There is regular monitoring of adult and childhood overweight and obesity prevalence using anthropometric measurements</p> <p>MONIT 4 There is regular monitoring of the prevalence of NCD risk factors and occurrence rates (eg,</p>

Continued

Table 1 Continued

Domains	Original good practice indicator	Adapted good practice indicator
	maximum of every 5 years for more expensive surveys (<i>average score</i> =3.27±1.12) MONIT 5 Sufficient research and evaluation of major programmes and policies to assess effectiveness and contribution to achieving the goals of the nutrition and health plans (<i>average score</i> =1.32±0.66)	prevalence, incidence, mortality) for the main diet-related NCDs MONIT 5 There is sufficient evaluation of major programmes and policies to assess effectiveness and contribution to achieving the goals of the nutrition and health plans MONIT 6 Progress towards reducing health inequalities and economic and societal determinants of health are regularly monitored
11. FUNDING AND RESOURCES <i>Original:</i> Sufficient funding is invested in 'Population Nutrition Promotion' to create healthy food environments, improved population nutrition, reductions in obesity, diet-related NCDs and their related inequalities <i>Adapted:</i> same	FUND 1 The level of budget spent on Population Nutrition Promotion is transparent (<i>average score</i> =3.71±0.79) FUND 2 The 'Population Nutrition Promotion' budget, as a proportion of total health spending and/or in relation to the diet-related NCD burden is sufficient to reduce diet-related NCDs (<i>average score</i> =1.47±0.72)	FUND 1 The 'Population Nutrition Promotion' budget, as a proportion of total health spending and/or in relation to the diet-related NCD burden is sufficient to reduce diet-related NCDs FUND 2 Government funded research is targeted for improving food environments, reducing obesity, NCDs and their related inequalities
12. PLATFORMS FOR INTERACTION <i>Original:</i> There are coordination platforms and opportunities for synergies across government departments, levels of government and other sectors (NGOs, private sector, and academia) such that policies and actions in food and nutrition are coherent, efficient and effective in improving food environments, population nutrition, diet-related NCDs and their related inequalities <i>Adapted:</i> same	PLATF 1 There are robust coordination mechanisms (across departments and levels of government) to ensure policy coherence, alignment, and integration of food, obesity and diet-related NCD prevention policies across governments (<i>average score</i> =1.49±0.80) PLATF 2 There are relationships and interactions between government and the commercial food sector, and these adopt systematic and transparent accountability processes to identify and ethically manage conflicts of interests (<i>average score</i> =2.52±0.83) PLATF 3 There are existing structures and mechanisms for regular, meaningful interactions between government and civil society (academia, professional organisations, public-interest NGOs and citizens) on food policies and other strategies to improve population nutrition (<i>average score</i> =1.79±0.87)	PLATF 1 There are robust coordination mechanisms across departments and levels of government (national and local) to ensure policy coherence, alignment, and integration of food, obesity and diet-related NCD prevention policies across governments PLATF 2 There are formal platforms between government and the commercial food sector to implement healthy food policies PLATF 3 There are formal platforms for regular interactions between government and civil society on food policies and other strategies to improve population nutrition PLATF 4 The government leads a broad, effective and sustainable systems-based approach with local organisations to improve the healthiness of food environments at a national level
13. WORKFORCE DEVELOPMENT <i>Original:</i> Governments have the capacity in population nutrition expertise to ensure that the formulation, implementation and evaluation of food and nutrition policies and programmes meet population needs <i>Adapted:</i> same	WORKF 1 Sufficient inclusion of food and nutrition in curricula for preschool, primary and secondary school children (<i>average score</i> =2.23±0.91) WORKF 2 The capacity (numbers and skills) of the government's public health nutrition workforce is commensurate with the size of the food and nutrition	

Continued

Table 1 Continued

Domains	Original good practice indicator	Adapted good practice indicator
14. HEALTH IN ALL POLICIES <i>Original:</i> Processes are in place to ensure policy coherence and alignment, and that population health impacts are explicitly considered in the development of government policies <i>Adapted:</i> same	problems of the population and government resources for health (<i>average score</i> =1.74±0.76) HIAP 1 There are processes in place to ensure that population nutrition and health outcomes are considered and prioritised in the development of all government policies relating to food (<i>average score</i> =1.31±0.47) HIAP 2 There are processes (eg, health impact assessments) to assess and consider health impacts during the development of other non-food policies (<i>average score</i> =1.50±0.74)	HIAP 1 There are processes in place to ensure that population nutrition, health outcomes and reducing health inequalities are considered and prioritised in the development of all government policies relating to food HIAP 2 There are processes (eg, health impact assessments) to assess and consider health impacts during the development of other non-food policies

Definitions:

Benchmark: A standard or point of reference against which aspects of food environments may be assessed and compared;

Civil society: The aggregate of non-governmental organisations, institutions and individuals that manifest interests and will of citizens (academia, professional organisations, public-interest NGOs and citizens);

Diet-related non-communicable diseases (NCDs): Type 2 diabetes, cardiovascular diseases and nutrition-related cancers, excluding micronutrient deficiencies, undernutrition, stunting, osteoporosis, mental health and gastrointestinal diseases;

Food environments: The collective physical, economic, policy and sociocultural surroundings, opportunities and conditions that influence people's food and beverage choices and nutritional status;

Government: National and local government, including Councils, district health boards and public health units;

Government-funded settings: Government departments and agencies, publicly funded schools, publicly funded early childhood education services, elderly homes, hospitals and prisons;

Government implementation: refers to the intentions and plans of the government, government funding for implementation of actions undertaken by non-governmental organisations and actions and policies implemented by the government;

Healthy foods: Foods recommended in national food-based dietary guidelines, dietary guidelines or food-based standards;

Healthy food environments: Environments in which the foods, beverages and meals that contribute to a population diet meeting national dietary guidelines are widely available, affordably priced and widely promoted;

Nutrients of concern: salt, fat, saturated fat, trans fat and added sugar;

Population nutrition promotion: The investments in population promotion of healthy eating and healthy food environments for the prevention of obesity and diet-related NCDs, excluding all one-on-one promotion (primary care, antenatal services, maternal and child nursing services etc.), food safety, micronutrient deficiencies (eg, folate fortification) and undernutrition;

Unhealthy foods: processed foods or non-alcoholic beverages high in saturated fats, trans fats, added sugars and/or salt.

Important information:

If 'foods' are stated, it means 'foods and non-alcoholic beverages';

The time frame is the last 3 years (governing period), although the monitoring domain needs to take a longer view (5 years).

Box 1 Example of the evidence collected on the extent of implementation of a front-of-pack supplementary nutrition information system in New Zealand (as of November 2013)

Good practice for 'food labelling' domain: There is a consumer-oriented regulatory system implemented for labelling on food packaging and menu boards in restaurants to enable consumers to easily make informed food choices and to prevent misleading claims.

Good practice indicator 'Label 3': A single, consistent, interpretive, evidence-informed front-of-pack supplementary nutrition information system, which readily allows consumers to assess a product's healthiness, is applied to all processed foods.

Evidence:

- ▶ The labelling logic report, commissioned by the New Zealand Government, contained several recommendations related to front-of-pack nutrition labelling:
 - Recommendation 50: That an interpretative front-of-pack labelling system be developed that is reflective of a comprehensive Nutrition Policy and agreed public health priorities.
 - Recommendation 51: That a multiple traffic lights front-of-pack labelling system be introduced. Such a system is to be voluntary in the first instance, except where general or high level health claims are made or equivalent endorsements/trade names/marks appear on the label, in which case it should be mandatory.
 - Recommendation 52: That government advice and support be provided to producers adopting the multiple traffic lights system and that its introduction be accompanied by comprehensive consumer education to explain and support the system.
 - Recommendation 53: That ongoing monitoring and evaluation of the multiple traffic lights system be undertaken to assess industry compliance and the effectiveness of the system in improving the food supply and influencing consumers' food choices.
- ▶ There is currently no mandatory or voluntary front-of-pack labelling system in place in New Zealand.
- ▶ Under the leadership of the Ministry for Primary Industries (MPI), an expert advisory group composed of industry, government and public health stakeholders, has been working on development of a voluntary approach to front-of-pack labelling in New Zealand. Recently, on 14 June 2013, the Health Star Rating system was approved by the Australian government.²⁸ The preferred implementation option at this stage is a voluntary system, subject to consistent and widespread uptake of the system by industry. If, following evaluation after 2 years, a voluntary implementation is found to be unsuccessful, a mandatory approach will be considered. New Zealand intends to align as much as possible with what is happening in Australia and has supported a voluntary interpretive front of pack labelling system. The traffic lights system is not being considered in New Zealand or Australia. New Zealand is still working through areas of difference from the proposed Australian system, in particular the proposed exemptions.
- ▶ International *best practice*: In the UK a new consistent system of front-of-pack food labelling has been introduced: A combination of colour coding and nutritional information is used to show how much fat, salt and sugar and how many calories are in each product. It is estimated that about 60% of foods will be covered by the system because it will remain voluntary.

In order to calculate the variance, the sample of 'subjects' (=indicators of the Food-EPI) to rate was set at 100%, while the sample of 'raters' was set at 50%, as about 50% of the invited experts from the national Expert Panel were able to make it to one of the whole-day workshops. A correction for finite population was applied. The answers from raters who did not rate for particular indicators were omitted.

RESULTS

In total, 39 public health experts and non-governmental organisation (NGO) representatives (about 50% of those invited) participated in both rating workshops (20 persons in Auckland and 19 persons in Wellington). Of those, 18 raters were researchers working at university, 1 working at the Plant and Food Research Institute, 19 representatives of different NGOs and 1 representative of other organisations (Dieticians New Zealand). In total, 10 participants were of Maori, Pacific or mixed descent, while 28 were of NZ European and 1 of European descent. After participation, all experts indicated a willingness to remain involved in future rating workshops.

Difficulty of rating

According to the raters, good practice indicators within the domains of 'food promotion' (promot1, promot2, promot4), 'food prices' (prices1, prices2), 'leadership'

(lead1, lead2), 'food labelling' (label3, label4) and 'food composition' (comp3) were the easiest to rate (>50% of the raters found them easy to rate), while the indicators within the domains of 'governance' (gover1, gover2), 'funding and resources' (funding2) and 'workforce development' (workf2) were found to be the most difficult to rate (>25% of the raters found them difficult to rate; [figure 1](#)).

Completeness and appropriateness of the evidence presented

More than 80% of the raters found that the completeness and appropriateness of the evidence presented for the indicators within the domains 'food labelling' (label1, label2, label3, label4), 'food promotion' (promot1, promot2, promot4), 'food prices' (prices1, prices2), 'leadership' (lead2), 'food provision' (prov1, prov4), 'monitoring and intelligence' (monit3) and 'funding and resources' (fund1) were sufficient or fairly sufficient. More than 50% of the raters found the evidence presented for the indicators within the domains 'workforce development' (workf1, workf2), 'food provision' (prov3), 'funding and resources' (fund2), governance (gover1) and 'health-in-all-policies' (hiap1) insufficient or fairly insufficient ([figure 2](#)).

The good practice indicators on subsidies (prices3) and cross-border broadcasting (promotion3) were found too problematic to rate during the workshop due

Table 2 Questionnaire for the raters, example for the food labelling domain within the food policy component of the Healthy Food Environment Policy Index (Food-EPI)

DOMAINS	Good practice indicator	Rating (1–6)	(A) Level of difficulty				Did not rate	(B) Completeness and appropriateness of evidence				
			Easy	Fairly easy	Fairly difficult	Difficult		Sufficient	Fairly sufficient	Fairly insufficient	Insufficient	Do not know
2 FOOD LABELLING: There is a consumer-oriented regulatory system implemented for labelling on food packaging and menu boards in restaurants to enable consumers to easily make informed food choices and to prevent misleading claims	<p>Q6 Ingredient lists and nutrient declarations in line with Codex recommendations (plus <i>trans</i>-fats and added sugar) are present on the labels of all processed foods</p> <p>Q7 Robust, evidence-based regulatory systems are in place for approving/reviewing claims on foods, so that consumers are protected against unsubstantiated and misleading nutrition and health claims</p> <p>Q8 A single, consistent, interpretive, evidence-informed front-of-pack supplementary nutrition information system, which readily allows consumers to assess a product's healthiness, is applied to all processed foods</p> <p>Q9 A consistent, single, simple, clearly-visible system of labelling the menu boards of all quick service restaurants (ie, fast food chains) is applied, which allows consumers to interpret the nutrient quality and energy content of foods and meals on sale</p> <p>General comment box 2:</p>											
			Comment box 2A:					Comment box 2B:				

Domains	Good practice indicator	Rating (1–6)	(A) Level of difficulty				(B) Completeness and appropriateness of evidence				
			Easy	Fairly easy	Fairly difficult	Difficult	Did not rate	Sufficient	Fairly sufficient	Fairly insufficient	Insufficient
8 LEADERSHIP: The political leadership ensures that there is strong support for the vision, planning, communication, implementation and evaluation of policies and actions to create healthy food environments, improve population nutrition and reduce diet-related inequalities	Q28 There is strong, visible, political support (at the Head of State/Cabinet level) for improving food environments, population nutrition and diet-related NCDs and their related inequalities Q29 There is a comprehensive, up-to-date plan (including targets, priority policy and programme strategies) linked to national needs and priorities to improve food environments, population nutrition, diet-related NCDs and their related inequalities Q30 Priorities are given to reduce inequalities in relation to diet, nutrition, obesity and NCDs in the comprehensive plan (above) and the government generally General comment box 8:										
			Comment box 8A:				Comment box 8B:				

NCD, non-communicable disease.

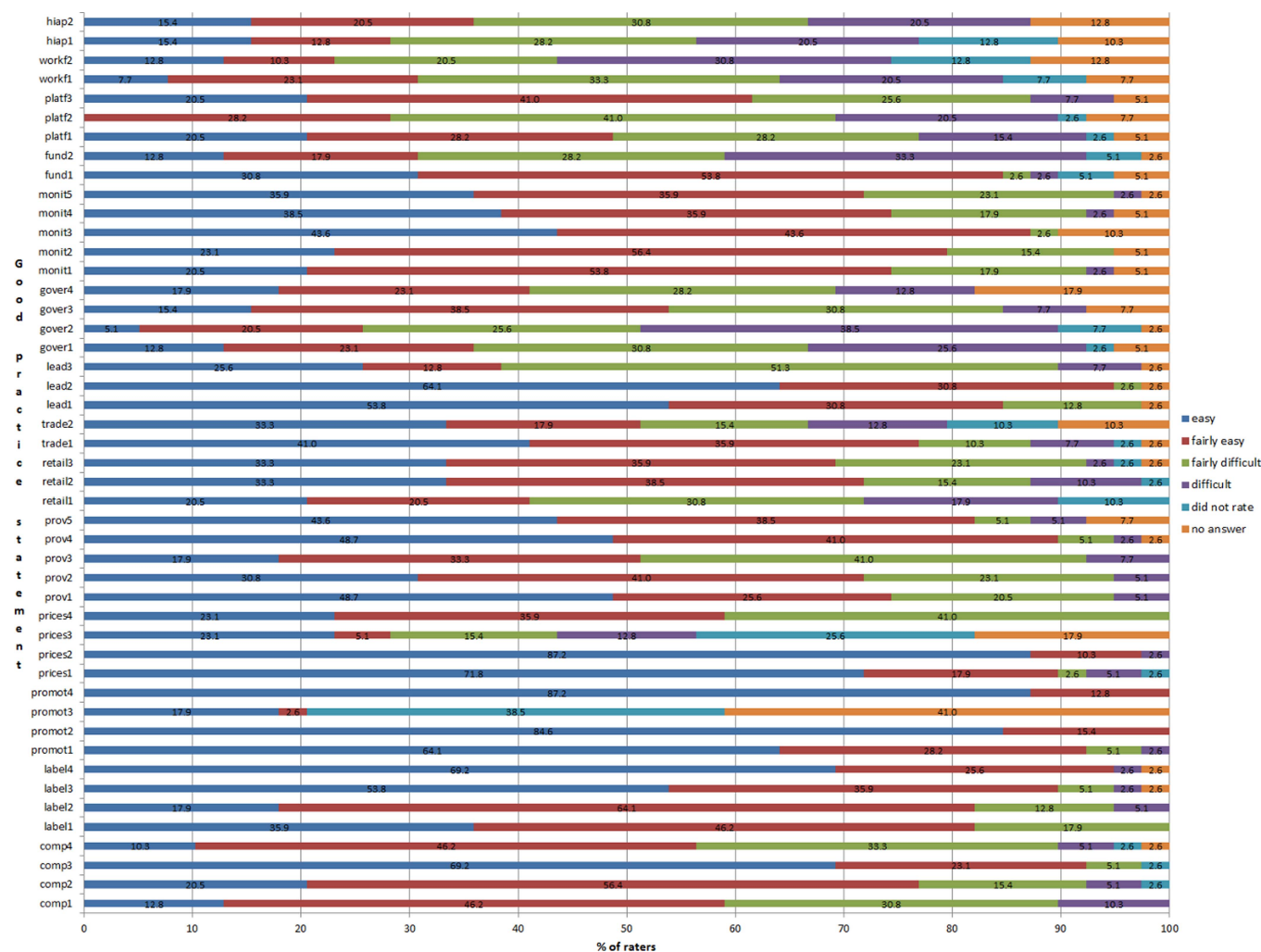


Figure 1 Level of difficulty of rating for each of the good practice indicators (comp, composition; label, labelling; promot, promotion; prov, provision; lead, leadership; gover, governance; monit, monitoring; fund, funding; platf, platforms; workf, workforce; hiap, health-in-all-policies; see table 1 for details on each of the good practice indicators).

to insufficient evidence. More research has to be carried out on those areas to improve the evidence base.

Distribution of ratings

The distribution of ratings for the different good practice indicators is presented in figure 3 and the average scores are presented in table 1. The largest variations of scores ($SD > 0.80$) were obtained for the indicators within the domains 'monitoring' (monit2, monit3, monit4), 'platforms for interaction' (platf1, platf2, platf3), 'governance' (gover1, gover3, gover4), 'food composition' (comp1, comp4), 'food provision' (prov2), 'leadership' (lead3), 'food retail' (retail1), 'workforce development' (workf1) and 'food labelling' (label1).

Reasons for variations in rating scores for the good practice indicators are diverse: difficulty to rate, completeness and accuracy of the evidence presented, clarity of the good practice indicators and/or adequacy of international benchmarks to rate against.

The highest average scores (>2.5 or more than 50% implementation) were obtained for comp4, label1,

label2, prov3, gover3, monit3, monit4, platf2 and fund1 (table 1).

Inter-rater reliability of the Food-EPI was 0.85 (95% CI 0.81 to 0.88), and increased to 0.89 (95% CI 0.85 to 0.92) after deletion of the good practice indicators difficult to rate and the ones for which the evidence presented was found to be insufficient (32 of 47 good practice indicators retained). There was no significant difference ($p=0.92$) between the mean rating scores of public health academics ($n=18$) and those of NGO representatives and other experts ($n=21$). Inter-rater reliability was similar among public health academics (0.88, 95% CI 0.87 to 0.90, $n=18$) and NGO representatives and other experts (0.82, 95% CI 0.76 to 0.88, $n=21$).

Adaptations to the Food-EPI tool based on rating results and synthesis of raters' comments

The adapted Food-EPI tool can be found in table 1 (column 3). The major changes made, based on the results of the pilot test, include a stronger focus on

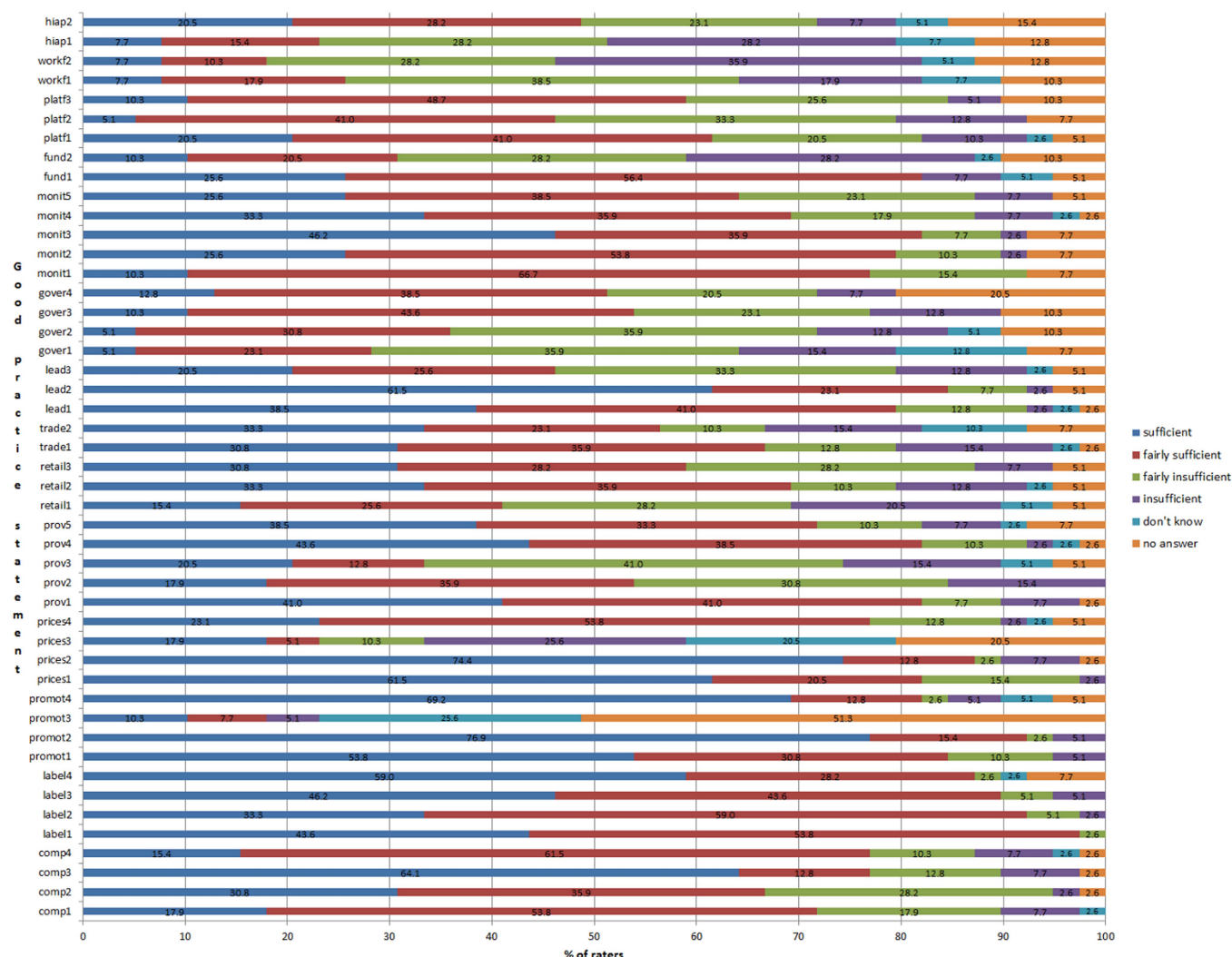


Figure 2 Appropriateness and completeness of the evidence presented (comp, composition; label, labelling; promot, promotion; prov, provision; lead, leadership; gover, governance; monit, monitoring; fund, funding; platf, platforms; workf, workforce; hiap, health-in-all-policies; see table 1 for details on each of the good practice indicators).

equity. An extra good practice indicator on monitoring progress towards reducing health inequalities was added. An equity-based approach is also included as one of the overarching principles within the global NCD action plan.¹⁰

In addition, the leadership domain was strengthened, as the importance of setting population intake targets for nutrients of concern (such as sodium, saturated and *trans* fatty acids), and establishing and implementing evidence-based food-based dietary guidelines as a key role for government were recognised. Apart from their use in health promotion, these are important tools for policymaking as well. This has been recognised in the recent NCD global action plan of WHO.¹⁰

The workforce development domain has been deleted from the Food-EPI since the good practice indicators were found too difficult to rate and, according to experts, workforce capacity is a result of leadership and adequate funding.

The indicator on nutrition in school curricula has been deleted as most countries have this included somehow and it would be difficult to identify a good indicator to sufficiently discriminate between countries.

A good practice indicator on community-based programmes was added to the 'platforms for interaction' domain. Community-based programmes were not really captured within the Food-EPI, but have been shown to be effective to reduce obesity, and to be cost-effective and sustainable,^{19–22} and thus important to be added to the Food-EPI tool. An international benchmark for this may be the 'Healthy Together Victoria' programme, led by the Department of Health in Victoria, Australia.²³

The government funding for population nutrition promotion (2012/2013) was found to be 29 million dollars or 0.21% of Vote Health in New Zealand, which is less than one-twentieth of what the health system pays for the consequences of overweight and obesity.²⁴ However,

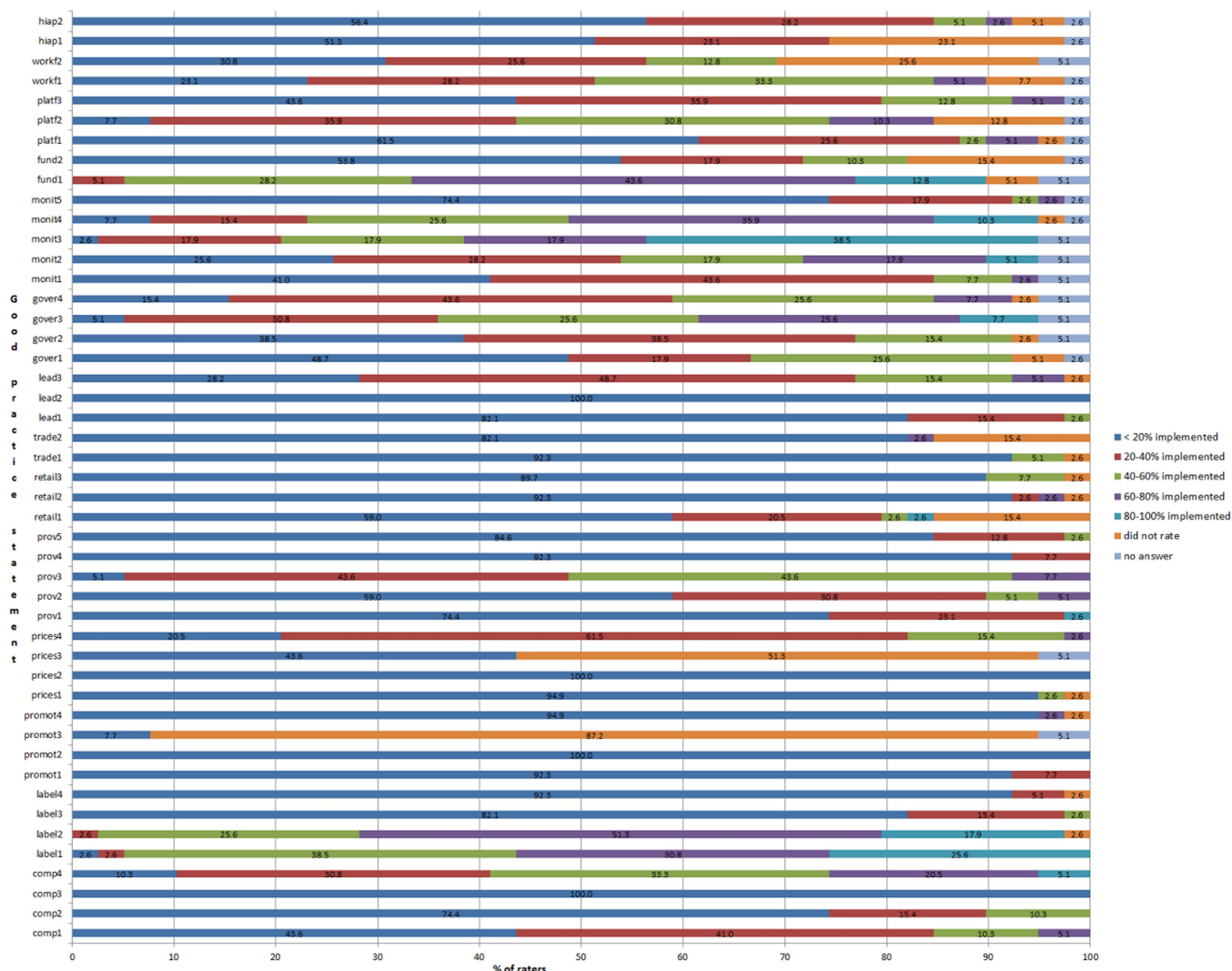


Figure 3 Distribution of the ratings for each of the good practice indicators (comp, composition; label, labelling; promot, promotion; prov, provision; lead, leadership; gover, governance; monit, monitoring; fund, funding; platf, platforms; workf, workforce; hiap, health-in-all-policies; see table 1 for details on each of the good practice indicators).

this figure did not include government funding for research on obesity and NCD prevention. An additional good practice indicator was therefore added to the 'funding' domain (table 1).

In order to clearly distinguish 'policies' from 'infrastructure support', good practice indicators on monitoring food composition, food promotion and food provision have now been combined within the good practice indicator on monitoring food environments under the infrastructure support domain on 'monitoring'.

Other specific changes for several domains include the following:

Food composition

Maximising the healthy components (eg, whole grains, fruits and vegetables) in food products was deleted as part of the overall domain good practice. Promoting fruit and vegetable consumption among the population is important and is part of population health promotion

(captured under the domains of funding and leadership). For setting food composition and reformulation targets, however, it turned out that it was much more plausible and feasible to set upper limits of unhealthy components (eg, maximum salt content in bread or *trans* fats in processed foods) than setting lower limits of healthy components (eg, minimum amount of fibre in bread or breakfast cereals, or the amount of vegetables in ready meals). Food composition regulations are a difficult and low priority way to promote the intake of healthy components of food.

The evaluation of existence of targets and strategies to improve population intakes has been moved to the leadership domain as it is too broad to fit under the food composition domain only. Monitoring food consumption has been deleted, as performance of countries on food composition and consumption monitoring might differ, and monitoring food consumption was already part of the monitoring domain.

Food marketing

The good practice indicator on cross-border broadcasting has been deleted, since this issue ideally has to be addressed at the international level.

Food prices

The phrase 'taking into account tax system efficiency, feasibility and distributional effects' has been changed to 'where possible' for the first two indicators, as this level of complexity was not taken into account for any of the other good practice indicators. The second indicator now includes an additional part on reinvesting taxes for improving population health.

Food retail

The first indicator has been deleted as it was considered not to be of major importance for priority action by governments.

Governance

The indicator on using evidence and ensuring transparency has been separated into two different indicators. The last indicator was deleted in order not to overlap with platforms for interaction between government and civil society.

Monitoring

The regularity of monitoring was taken out as it depends on design of surveys and detail of information collected. International benchmarks will include regularity of surveys in other countries globally.

Funding

The indicator on transparency of government budget was taken out as accessibility to budgets will become apparent from the evidence collected for the indicator on government funding for population nutrition promotion.

No other major changes (apart from rewording to improve clarity of some of the good practice indicators) have been made to the Food-EPI tool.

Based on the comments of the raters, the evidence on extent of policy implementation by the New Zealand government for some of the good practice indicators will be revised and refined before full implementation of the Food-EPI in New Zealand (eg, specifically looking into government-funded research on obesity and NCD prevention, effective support of the government for international initiatives on obesity and NCD prevention, consideration of the intent of existing subsidies, more comprehensive overview of programmes and policies at the local level, proportion of ministry contracts funded specifically including an objective on reducing health inequalities, processes of establishing government committees and advisory groups, details on conflict of interest registers of boards and how these are managed, translation of global NCD targets and indicators into national action).

In addition, more or better international best practice exemplars need to be sought for good practice

indicators within the infrastructure support domains against which experts rate government performance.

A list of key assumptions and definitions will be included as part of the Food-EPI tool as a help for the raters during the workshop (table 1).

Adaptations to the process based on rating results and raters' comments

Some raters found that the time to read, discuss and answer was not sufficient for some of the indicators. In order to keep the timing feasible and have sufficient time for discussion, initial rating can be performed by the raters at home after reading the evidence. After presentation of the evidence and plenary discussion during the workshop, initial ratings may be changed.

DISCUSSION

Overall, the raters found the Food-EPI process very useful and very informative. The Expert Panel included a good mix of expertise and skills, which informed the discussions. An incentive for them was to be updated on the extent of policy implementation by their government. Although the major aim of the Food-EPI tool and process is to increase government action on food environments, the potential of the Food-EPI to also enhance civil society's capacity to advocate for healthy food environments was clearly recognised.

Future developments

This study involved pilot testing the Food-EPI tool and process, and revising those for implementation in New Zealand and other countries of varying size and income.

Although experts from low-income and middle-income countries revised the Food-EPI tool in its development phase,¹³ additional pilot testing and adaptations for implementation of the tool and process in those settings might be needed. It is anticipated that the availability and accessibility of information on policy implementation might differ among countries.

For a small country with a dominant national government role for food policies the process is relatively simple, compared with a large country where responsibility for food policies is covered by different federal, state and local authorities. For subnational levels of government, it is proposed that these are sampled using either a complete sample (eg, for high-income countries such as Australia, with good data and a low number of subnational jurisdictions), or a stratified representative sample (eg, for high-income countries such as the USA with good data but a large number of states), or a sentinel site sample (eg, for low-income and middle-income countries such as India with less data and many states).

Implementing the Food-EPI tool and process will include an additional prioritisation approach with the national Expert Panel after the rating workshops. Based on the results of the ratings, the experts will formulate

concrete actions for their government and these will then be prioritised by importance (need, impact, equity, other positive and negative effects) and achievability (feasibility, acceptability, affordability and efficiency) for the policy and infrastructure support domains separately.

A weighting system for the different domains and good practice indicators is being developed based on international evidence on effectiveness and expert opinions through a Delphi process. This will be mostly needed once benchmarking of countries is attempted.

Ideally, over time, theoretically defined good practice indicators should evolve into existing best practice real life benchmarks. The World Cancer Research Fund is developing a repository of international best practice examples on food policies for the purposes of benchmarking progress.⁷ This repository is expected to grow into sufficient numbers of examples to allow policy benchmarking for the Food-EPI. Further best practice examples will also be collected for the infrastructure support domains (eg, funding for population nutrition promotion in relation to NCD burden and as a percentage of the total health expenditure) as part of INFORMAS and in collaboration with WCRF and the World Obesity Federation. Benchmarks are very important to prevent that raters would be too harsh for their government. In this study, all average rating scores were lower than 4 out of 5 (<80% implemented), while, for example, the regulation on nutrition and health claims, and the associated nutrient profiling scoring system²⁵ in New Zealand has been considered as an international best practice example by WCRF.

In addition, relevant country-level contextual information such as a set of existing relevant key country figures and indices, demographic and socioeconomic data, key information on population health, available infrastructure, resources and capacity, political system and structure, potential constraints for monitoring, and availability and accessibility of governmental documents and budget information should be collected when ranking countries, and this will allow the results on the Food-EPI to be interpreted in light of these important factors.

In order to assess whether the implementation of the Food-EPI will improve food environments, the impact of implementation of the Food-EPI tool and process on civil society's capacity to advocate for healthy food environments and action of government to improve food environments, needs to be effectively measured. To measure the impact of the Food-EPI tool and process on civil society's capacity to advocate for healthy food environments, a tool will be developed for public health NGOs based on existing community readiness to change measures^{21 26} and community capacity indices.²⁷

The impact of the Food-EPI tool and process on policies and actions of governments on food environments will be measured through structured interviews with policymakers, and through updating the evidence base for running the Food-EPI.

CONCLUSION

The international benchmarking of the extent of government policy implementation on food environments has the potential to catalyse greater government action to reduce obesity and NCDs, and increase civil society's capacity to advocate for healthy food environments. The impact of the implementation of the Food-EPI tool and process on government action and civil society's advocacy efforts has to be evaluated.

Acknowledgements The authors acknowledge the NGO representatives and academics in New Zealand who participated in the rating workshops. The authors acknowledge the government officials who spent time answering official information requests and checking completeness of the evidence on implementation of policies. INFORMAS is the International Network for Food and Obesity/non-communicable diseases Research, Monitoring and Action Support. The authors wish to thank all founding members of the network for their contributions to development of the Healthy Food Environment Policy Index (Food-EPI). These members include (alphabetically mentioned): Simon Barquera (Mexican National Institute of Public Health), Sharon Friel (Australian National University), Corinna Hawkes (World Cancer Research Fund), Bridget Kelly (University of Wollongong), Shiriki Kumanyika (University of Pennsylvania), Mary L'abbe (University of Toronto), Amanda Lee (Queensland University of Technology), Tim Lobstein (World Obesity Federation), Jixiang Ma (Centers for Disease Control China), Justin Macmullan (Consumers International), Sailesh Mohan (Public Health Foundation India), Carlos Monteiro (University of São Paulo), Bruce Neal (George Institute for Global Health), Mike Rayner (University of Oxford), Gary Sacks (Deakin University), David Sanders (University of the Western Cape), Wendy Snowdon (The Pacific Research Center for the Prevention of Obesity and Non-Communicable Diseases), Chris Walker (Global Alliance for Improved Nutrition).

Collaborators INFORMAS.

Contributors SV and BS designed the study and methods. SV drafted the manuscript and BS critically revised draft versions of the manuscript. All authors read and approved the final manuscript.

Funding The authors acknowledge the National Heart Foundation (grant number 1580) for funding the rating workshops in New Zealand. SV and BS are funded through The University of Auckland Vice Chancellor's Strategic Fund.

Competing interests None.

Patient consent Obtained.

Ethics approval University of Auckland Human Ethics Committee (reference number 9326).

Provenance and peer review Not commissioned; externally peer reviewed.

Data sharing statement The data set is available upon request through email to: s.vandevijvere@auckland.ac.nz

Open Access This is an Open Access article distributed in accordance with the Creative Commons Attribution Non Commercial (CC BY-NC 4.0) license, which permits others to distribute, remix, adapt, build upon this work non-commercially, and license their derivative works on different terms, provided the original work is properly cited and the use is non-commercial. See: <http://creativecommons.org/licenses/by-nc/4.0/>

REFERENCES

1. Hawkes C, Jewell J, Allen K. A food policy package for healthy diets and the prevention of obesity and diet-related non-communicable diseases: the NOURISHING framework. *Obes Rev* 2013;14(Suppl 2): 159–68.
2. OECD. *OECD obesity update 2014: OECD directorate for employment, Labour and Social Affairs*, 2014.
3. Fraser B. Latin American countries crack down on junk food. *Lancet* 2013;382:385–6.

4. Moodie R, Stuckler D, Monteiro C, *et al.* Profits and pandemics: prevention of harmful effects of tobacco, alcohol and ultra-processed food and drink industries. *Lancet* 2013;381:670–9.
5. Stuckler D, McKee M, Ebrahim S, *et al.* Manufacturing epidemics: the role of global producers in increased consumption of unhealthy commodities including processed foods, alcohol, and tobacco. *PLoS Med* 2012;9:e1001235.
6. International Association for the Study of Obesity (IASO). The prevention of obesity and NCDs: challenges and opportunities for governments. IASO policy briefing. Secondary The prevention of obesity and NCDs: challenges and opportunities for governments. IASO policy briefing 2014. http://www.iaso.org/site_media/uploads/iaso_preventingobesitybriefing.pdf
7. World Cancer Research Fund. WCRF International Food Policy Framework for Healthy Diets: NOURISHING. Secondary WCRF International Food Policy Framework for Healthy Diets: NOURISHING 2013. http://www.wcrf.org/policy_public_affairs/nourishing_framework/#about
8. Snowden W, Thow AM. Trade policy and obesity prevention: challenges and innovation in the Pacific Islands. *Obes Rev* 2013;14 (Suppl 2):150–8.
9. Swinburn B, Sacks G, Vandevijvere S, *et al.* INFORMAS (International Network for Food and Obesity/non-communicable diseases Research, Monitoring and Action Support): overview and key principles. *Obes Rev* 2013;14(Suppl 1):1–12.
10. World Health Organization (2013) Global action plan for the prevention and control of noncommunicable diseases 2013–2020. Geneva, Switzerland: World Health Organization.
11. Swinburn BA, Sacks G, Hall KD, *et al.* The global obesity pandemic: shaped by global drivers and local environments. *Lancet* 2011;378:804–14.
12. Black C, Moon G, Baird J. Dietary inequalities: what is the evidence for the effect of the neighbourhood food environment? *Health Place* 2014;27:229–42.
13. Swinburn B, Vandevijvere S, Kraak V, *et al.* Monitoring and benchmarking government policies and actions to improve the healthiness of food environments: a proposed Government Healthy Food Environment Policy Index. *Obes Rev* 2013;14(Suppl 1):24–37.
14. World Health Organisation. *Everybody business: strengthening health systems to improve health outcomes. WHO's framework for action.* Geneva: World Health Organisation, 2007.
15. Martin J, Peeters A, Honisett S, *et al.* Benchmarking government action for obesity prevention—an innovative advocacy strategy. *Obes Res Clin Pract* 2014;8:e388–98.
16. Access to Nutrition Index. Secondary Access to Nutrition Index 2013. <http://www.accesstonutrition.org/>
17. Sacks G, Swinburn B, Kraak V, *et al.* A proposed approach to monitor private-sector policies and practices related to food environments, obesity and non-communicable disease prevention. *Obes Rev* 2013;14(Suppl 1):38–48.
18. Gwet KL. *Handbook of inter-rater reliability. The definitive guide to measuring the extent of agreement among multiple raters.* 3rd edn., Gaithersburg, USA: Advanced Analytics, 2012.
19. Swinburn B, Malakellis M, Moodie M, *et al.* Large reductions in child overweight and obesity in intervention and comparison communities 3 years after a community project. *Pediatr Obes* 2014;9:455–62.
20. Moodie ML, Herbert JK, de Silva-Sanigorski AM, *et al.* The cost-effectiveness of a successful community-based obesity prevention program: the be active eat well program. *Obesity (Silver Spring)* 2013;21:2072–80.
21. Millar L, Robertson N, Allender S, *et al.* Increasing community capacity and decreasing prevalence of overweight and obesity in a community based intervention among Australian adolescents. *Prev Med* 2013;56:379–84.
22. Millar L, Kremer P, de Silva-Sanigorski A, *et al.* Reduction in overweight and obesity from a 3-year community-based intervention in Australia: the 'It's Your Move!' project. *Obes Rev* 2011;12(Suppl 2):20–8.
23. Healthy Together Victoria. Secondary Healthy Together Victoria. 2013. <http://www.healthytogether.vic.gov.au/>
24. Lal A, Moodie M, Ashton T, *et al.* Health care and lost productivity costs of overweight and obesity in New Zealand. *Aust N Z J Public Health* 2012;36:550–6.
25. Food Standards Australia New Zealand. Consumer guide to the Nutrient Profiling Scoring Calculator Secondary Consumer guide to the Nutrient Profiling Scoring Calculator. 2013. <http://www.foodstandards.gov.au/industry/labelling/Pages/Consumer-guide-to-NPSC.aspx>
26. Oetting ER, Donnermeyer JF, Plested BA, *et al.* Assessing community readiness for prevention. *Int J Addict* 1995;30: 659–83.
27. Simmons A, Reynolds RC, Swinburn B. Defining community capacity building: is it possible? *Prev Med* 2011;52:193–9.
28. The Hon Shayne Neumann MP Parliamentary Secretary for Health and Aging. Final Communiqué—Legislative and Governance Forum on Food Regulation Secondary Final Communiqué—Legislative and Governance Forum on Food Regulation. <http://www.health.gov.au/internet/ministers/publishing.nsf/Content/mr-yr13-sn-sn014.htm>