



ELSEVIER

Contents lists available at ScienceDirect

MethodsX

journal homepage: www.elsevier.com/locate/mex

Method Article

A statistical and numerical modeling approach for spatiotemporal reconstruction of glaciations in the Central Asian mountains

Sourav Saha^{a,*}, Lewis A. Owen^b, Elizabeth N. Orr^c, Marc W. Caffee^d^a Department of Earth, Planetary and Space Sciences, University of California, Los Angeles, CA 90095, USA^b Department of Marine, Earth, and Atmospheric Sciences, North Carolina State University, Raleigh, NC 27695, USA^c German Research Centre for Geosciences (GFZ), University of Potsdam, Institute for Geosciences, 14476 Potsdam, Germany^d Department of Physics, Department of Earth, Atmospheric and Planetary Sciences, Purdue University, West Lafayette, IN 47907, USA

A B S T R A C T

Reconstructing Quaternary regional glaciations throughout the Himalaya, Tibet, and the adjoining mountains in Central Asia is challenging due to geological biases towards limited preservation of glacial deposits and chronological uncertainties. Here, we offer several statistical and mathematical model codes in R, in excel, and in MATLAB useful to develop regional glacial chronostratigraphies, especially in areas with distinct orographically-modulated climate. A complete R code is provided to generate a regional climate map using Cluster Analysis (CA) and Principal Component Analysis (PCA). Additional R codes include reduced chi-squared, Chauvenet's criterion, radial plotter/abanico plot, finite mixture model, and Student's *t*-test. These methods are useful in reconstructing the timing of local and regional glacial chronologies. An excel code to calculate equilibrium-line altitudes (ELAs) and steps to reconstruct glacier hypsometry are also made available to further aid to our understanding of the extent of paleoglaciations. A MATLAB code of the linear glacier flow model is included to reconstruct paleotemperatures using the length and slope of a glacier during past advances.

- R statistical codes can be used/modified without restrictions for other researchers.
- Easy steps to calculate ELAs and glacier hypsometry from the same data.
- Paleo-temperature reconstruction utilizes already developed glacial chronologies and maps.

© 2020 The Authors. Published by Elsevier B.V.

This is an open access article under the CC BY license. (<http://creativecommons.org/licenses/by/4.0/>)DOI of original article: [10.1016/j.quascirev.2019.07.021](https://doi.org/10.1016/j.quascirev.2019.07.021)

* Corresponding author at: Department of Earth, Planetary and Space Sciences, University of California, Los Angeles, CA 90095, USA.

E-mail address: sahasv@ucla.edu (S. Saha).

<https://doi.org/10.1016/j.mex.2020.100820>

2215-0161/© 2020 The Authors. Published by Elsevier B.V. This is an open access article under the CC BY license.

(<http://creativecommons.org/licenses/by/4.0/>)

ARTICLE INFO

Keywords: Glaciation, Cosmogenic isotopes, Paleoclimate modeling, Cluster analysis, Principal component analysis, Equilibrium-line altitudes

Article history: Received 14 August 2019; Accepted 13 February 2020; Available online 21 February 2020

Specification table

Subject Area:	<i>Earth and Planetary Sciences</i>
More specific subject area:	<i>Glacial Geology; Geomorphology; Paleoclimatology</i>
Method name:	<p>Climate statistics– Cluster Analysis, Principal Component Analysis, Pearson's product-moment correlation, analysis of similarities.</p> <p>Age statistics– Reduced Chi-squared (χ^2) test, Chauvenet's criterion, arithmetic and weighted mean, median, finite mixture model, radial plotter, Fisher's <i>f</i>-test, Student's <i>t</i>-test.</p> <p>Equilibrium-line altitudes (ELAs)– area-altitude (AA), area accumulation ratio (AAR), toe-headwall accumulation ratio (THAR).</p> <p>Glacier hypsometry and Linear inverse glacier flow model</p> <p>Climate statistics–</p>
Name and reference of the original method:	<ol style="list-style-type: none"> 1 Clarke, K.R., 1993. Non-parametric multivariate analysis of changes in community structure. <i>Australian Journal of Ecology</i> 18, 117–143. 2 Romesburg, C., 2004. <i>Cluster Analysis for Researchers</i>. North Carolina, p. 330. 3 Sagredo, E. A., Lowell, T. V., 2012. Climatology of Andean glaciers: A framework to understand glacier response to climate change. <i>Glob. Planet. Change</i> 86–87, 101–109. 4 Seaby, R., Henderson, P., 2014. <i>Community Analysis Package 5.0: Searching for structure in community data</i>. PISCES Conserv. Ltd., Engl., p. 186. 5 Zuming, L. A. L., Maohuan, H., 1989. A numerical classification of glaciers in China by means of glaciological indices at the equilibrium line. <i>Snow Cover Glacier Var. (Proceedings Balt. Symp. Maryland)</i>, 103–111. <p>Age statistics–</p> <ol style="list-style-type: none"> 6 Applegate, P. J., Urban, N. M., Keller, K., Lowell, T. V., Laabs, B. J. C., Kelly, M. A., Alley, R. B., 2012. Improved moraine age interpretations through explicit matching of geomorphic process models to cosmogenic nuclide measurements from single landforms. <i>Quat. Res.</i> 77, 293–304. 7 Galbraith, R., Roberts, R., Laslett, G., Yoshida, H., Olley, J., 1999. Optical Dating of Single and Multiple Grains of Quartz from Jinmium Rock Shelter, Northern Australia: Part I, Experimental Design and Statistical Models. <i>Archaeometry</i> 41, 339–364. 8 Taylor, J. R., 1997. <i>An Introduction to Error Analysis. Second Edition</i>, University Science Books, Sausalito, Calif. <p>Morphometric models–</p> <ol style="list-style-type: none"> 9 Oerlemans, J., 2005. Extracting a climate signal from 169 glacier records. <i>Science</i> 308, 675–677. 10 Osmaston, H., 2005. Estimates of glacier equilibrium line altitudes by the Area x Altitude, the Area x Altitude Balance Ratio and the Area x Altitude Balance Index methods and their validation. <i>Quat. Int.</i> 138–139, 22–31. 11 Pike, R.J., and Wilson, S.E., 1971. Elevation-relief ratio, hypsometric integral, and geomorphic area-altitude analysis. <i>Geological Society of America Bulletin</i>, 82(4), pp.1079–1084.
Resource availability:	<p>https://expage.github.io/data.html</p> <p>https://cran.r-project.org</p> <p>https://github.com/vegandevs/vegan</p> <p>https://cran.r-project.org/web/packages/Luminescence/index.html</p> <p>http://www.geog.ucsb.edu/~bodo/TRMM/</p> <p>https://crudata.uea.ac.uk/cru/data/hrg/tmc/</p> <p>https://www.glims.org/RGI/rgi60_dl.html</p> <p>https://search.earthdata.nasa.gov/search</p> <p>https://www.osc.edu/</p>

Method details

With the increased chronological reconstructions over the past two decades throughout the glaciated mountains of Central Asia (Fig. 1), it is now possible to use different statistical and numerical models effectively to reconstruct regional glacial stages [2,3,4]. Here, we offer R, Excel, and MATLAB codes of several visual, statistical, and numerical models that include Cluster Analysis (CA), Principal Component Analysis (PCA), reduced chi-squared test (χ^2), Chauvenet's criterion, radial plotter, abanico plot, finite mixture model, Student's *t*-test, equilibrium-line altitudes (ELAs) and glacier hypsometry, and linear (inverse) glacier flow model. These methods may be broadly categorized into climate statistics (e.g., CA, PCA), age statistics (e.g., χ^2 , Chauvenet's criterion, radial plotter, abanico plot, finite mixture model, *t*-test), and morphometric models (e.g., ELAs, hypsometry, flow model). Our objectives are (i) to identify climatically distinct groups of glaciers that are modulated by topography and orography; and (ii) to develop robust regional glacial stages in each climatic region for spatiotemporal comparison. The codes presented here are straightforward and can be easily modified or adapted to a more complex computational environment and a wide variety of geological settings. These codes are also powerful to help extract both temporal and spatial aspects of paleoglaciations, offering critical insight into the regional pattern of paleoglaciations.

We aim that these methods and codes would help quantify chronological data, especially local and regional moraine ages, in a much easier and robust way to the new user. All the necessary data and templates are provided in the supplementary materials. The software programs used to generate the codes are either publicly available (e.g., R and R packages) or readily purchasable (e.g., Microsoft Excel, MATLAB). The only exception is the Read ArcGrid program, which could be obtained by request since it is not proprietary to this study.

Climatic statistics

Data extraction

Both CRU CL 2.0 (10' latitude/longitude) reanalysis temperature (*T* in °C) data (<https://crudata.uea.ac.uk/cru/data/hrg/tmc/>) and TRMM derived precipitation (*PCP* in mm) data (4-km-horizontal x 250-m-vertical; <http://www.geog.ucsb.edu/~bodo/TRMM/>) are first rescaled to 18 × 18 km grid cell for

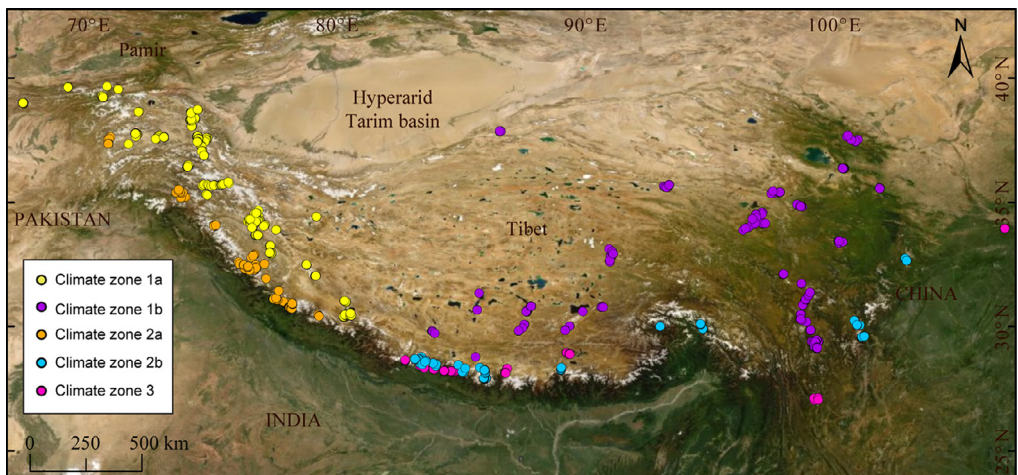


Fig. 1. Hillshade map showing the location of ^{10}Be and ^{26}Al dated glaciated valleys across the Himalayan-Tibetan orogen. ^{10}Be and ^{26}Al dates of each studied valleys are color-coded based on the climatic zone map shown in Fig. 3B. See Saha et al. [3] for more details. Age data were compiled from <http://expage.github.io/data.html>.

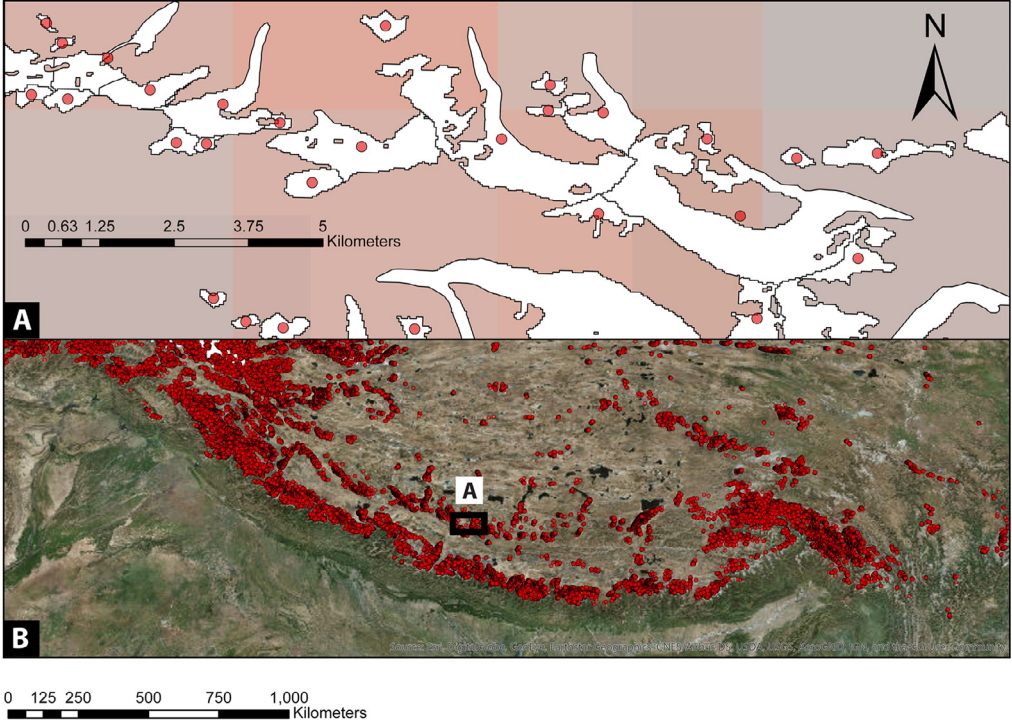


Fig. 2. (A) Glacier polygons, derived from the Randolph Glacier Inventory (RGI 6.0), were converted into points using their central location. (B) Each point (glacier) was then used to extract climate data. The glaciers are superimposed on the TRMM derived gridded precipitation datasets (A). The point cloud in the lower panel (B) is superimposed on Google Earth images.

each month in ArcGIS 10.5; averaged over 30 and 12 years, respectively. CRU CL 2.0 precipitation reanalysis data were not used due to high uncertainties for high-altitude places [5]. Approximately 42,511 glacier polygons (vector samples), derived from the Randolph Glacier Inventory (RGI 6.0), are then converted into points using the *Feature to Point* tool in ArcGIS 10.5 (Fig. 2). Subsequently, climate data are extracted for each point (glacier/sample) from the gridded datasets using the *Extract Multi Values to Points* tool (Fig. 2). Nine climate parameters are derived from the primary data for each glacier (Supplementary Table S1). These are:

- 1 Annual mean temperature ($T(x) = \sum_{x=1}^{12} \frac{T(x)}{12}$) (i)
- 2 Annual temperature range ($T(x) = T(x) \text{ max.} - T(x) \text{ min.}$) (ii)
- 3 Annual total precipitation ($PCP^a(x) = \sum_{x=1}^{12} PCP(x)$) (iii)
- 4 Annual precipitation range ($PCP^r(x) = PCP(x) \text{ max.} - PCP(x) \text{ min.}$) (iv)
- 5 Total summer (monsoon) precipitation ($PCP^s(x) = \sum_{x=1}^4 PCP(x)$) for JJAS (v)
- 6 Total winter (westerlies) precipitation ($PCP^w(x) = \sum_{x=1}^4 PCP(x)$) for DJFM (vi)
- 7 Seasonality Concentration Index ($SCI = \frac{\sqrt{\frac{1}{12-1} \sum_{x=1}^{12} (PCP(x) - PCP)^2}}{PCP}$) (vii)

where PCP is mean annual precipitation [5]

- 8 Relative Entropy ($RE = \sum_{m=1}^{12} PCP m(x) \log_2(12 PCP m(x))$) (viii)

where m is a month and $PCP m(x) = \frac{PCP(x)}{PCP}$ [6] and

- 9 Dimensionless Seasonality Index ($DSI = RE \frac{PCP}{R}$) (ix)

Where R is a constant scaling factor introduced to make precipitation dimensionless. We choose R as the maximum of $(\sum_{x=1}^{12} PCP(x))$ among all sample glaciers (see supplementary table S1).

SCI indicates relative precipitation variability in each month compared to the mean annual [6]. RE is likely associated with the number of ‘wet’ months and reaches its maximum value of $\log_2 12$ when annual precipitation is concentrated in one single month [7]. According to definition (ix), DSI is zero when either PCP (completely dry location) or RE (PCP distributed uniformly throughout the year) are zero and maximum ($\log_2 12$) when R is concentrated in a single month [7]. Due to the nature, units, and dissimilar ranges of the climate parameters, all data, except DSI , are scaled to lie between 0 and 1, by diving by the maximum value in the sample population for respective parameters (e.g., $T(x)/T(x)$ max.); Supplementary Table S1).

Statistical model

We performed CA [8] using all nine climate parameters extracted using glaciers as points (Supplementary Table S1). CA is often favored to classify samples (e.g., glaciers) based on the degree of similarity among them given a defined set of parameters [9,8]. Euclidean (linear) distances between any pair of glaciers in a multidimensional (in our case no. of dimensions are nine) Cartesian space is calculated in R [10]. Using the unweighted pair-group method with arithmetic averaging (UPGMA; [11]), finally, a cluster dendrogram is produced by grouping together the most similar (i.e., least linear distances) sets of glaciers (Fig. 3A). In addition, the significance of our clusters is tested using Pearson’s product-moment correlation between the sample Euclidean and cophenetic distances [12]. A higher positive correlation is expected for our CA groupings to be validated [9]. We also performed analysis of similarities (ANOSIM; [13]) between sample Euclidean distances and CA defined groups (with 600 permutations) to calculate R . Where the value of R (constrained between -1 to 1) is more positive, the samples within groups are more similar than would be expected by random chance [9] (Fig. 3B). A similar statistical model was successfully applied to Andean glaciers by Sagredo and Lowell [9]. In Saha et al. [3], we conclude that this type of model equally works best for Himalayan-Tibetan glaciers and is therefore useful in comparison to the existing manual delineation based on arbitrary topographic ranges [2, 14].

Following is the R code for CA. The Excel sheet in the supplementary Table S1 titled “For_R” can be used as a template; the current R code is designed to read a comma-delimited (*csv) file format. Note that the analyzed climate data provided in S1 is dense, and hence, the computation is performed at the Ohio Supercomputer Center ([15]; <https://www.osc.edu/>). Readers who intend to use/modify the code must reduce the data volume in Table S1 (sheet For_R) to try in the general computer system.

```
# Cluster (CA) hierarchical model
#-----
# Setting up the directory and file input
## "Directory need to change if using in other computer"
setwd("C:/users/folder_name/")
# file input
clima <- read.csv(file.choose()) # read the csv file
head(clima) # for quick look of the file to see the variable names
# Notes: the variables must be transformed into dimensionless values
# using a maximum of each climatic variables; values range from 0 to 1
# Note: Log transformation can be used if the data is skewed; here no
log transformation is attempted since that negatively affect thegrouping
#-----
# Check the installation of these necessary packages
#install package "vegan"
install.packages("vegan")
library(vegan) #load vegan package
#install package "rgl"
install.packages("rgl")
```

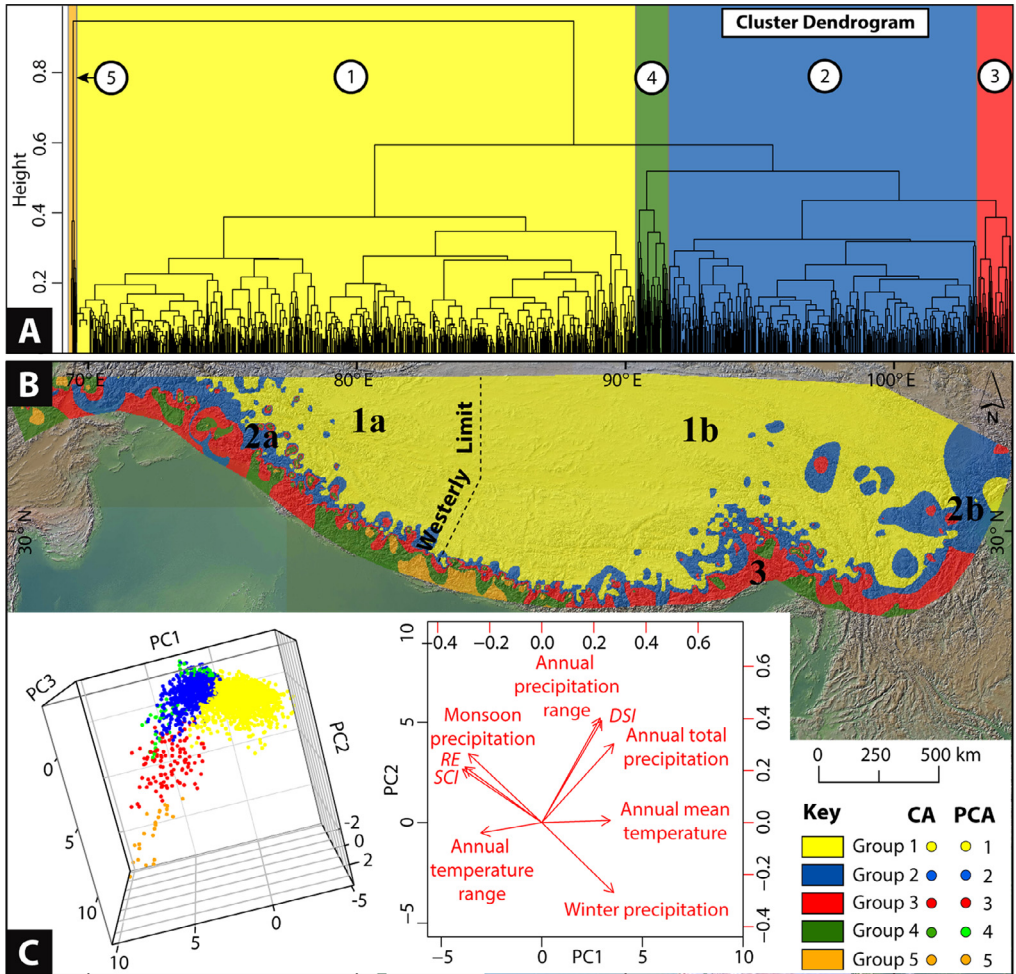


Fig. 3. Distinct climate groups are identified using Cluster (CA) and Principal Component Analyses (PCA) for Himalayan-Tibetan glaciers. (A) The cluster dendrogram shows groups of most identical glaciers with similar climatic characteristics (see Section 1.1). Each terminal of the hierarchical tree represents a single glacier, and they are joined with each other based on a certain level of similarity; most similar glaciers are clustered together at each hierarchy. Five (climate) groups of glaciers are first identified using CA. (B) A climate zone map (superimposed over a hillshade map) is generated using the interpolation method and using each glacier's CA grouping. The dotted line represents the mid-latitude westerlies limit (from the west). Further subdivisions (defined as 'Climatic zones') of glaciers based on the meridional limit of westerlies are proposed in Saha et al. [3]. For example, group 1 is subdivided into climatic zone 1a (i.e., Arid and semiarid Transhimalaya, northwest Tibet, Pamir, and the Tian Shan) and zone 1b (i.e., Arid and semiarid southern and northeastern Tibet). Group 4 and 5, as identified in the CA dendrogram, are discarded from further analysis since they only represent end members in PCA analysis (C). Due to no ^{10}Be and ^{26}Al dates in group 3, no subdivisions are made. See Saha et al. [3] for a detail explanation of the scheme. The color-coding of circles in Fig. 1 is based on this subdivision (climatic zones). (C) 3D plot showing the corresponding PCA results for PC1, PC2, and PC3 and the biplot showing the magnitude and sign of each parameter's contribution to the PC1 and PC2. Both methods indicate identical grouping. The figure is modified after Saha et al. [3].

```
library(rgl) #load rgl 3d package
#-----
# treating as data frame
pre <- (clima[, c(1, 11)]) # Annual total precipitation
temp <- (clima[, c(1, 9)]) # Annual mean temperature
```

```

rangeT <- (clima[ , c(1, 10)]) # Annual temperature range
rangeP <- (clima[ , c(1, 12)]) # Annual precipitation range
monP <- (clima[ , c(1,13)]) # Summer monsoon precipitation (J,J,A,S,0)
wintP <- (clima[ , c(1,14)]) # Winter and late winter precipitation
(D,J,F,M,A,M)
# Other indices
SCI <- (clima[ , c(1, 15)]) # SCI= stdv of 12/ave of 12
RE <- (clima[ , c(1, 16)]) # relative entropy [Pascale et al., 2015]
DSI <- (clima[ , c(1, 17)]) # dimensionless seasonality index [Pascale
et al., 2015]
#-----
# Converting the data frame into a matrix called 'data'
data<-cbind(pre[,2],temp[,2],rangeT[,2],rangeP[,2],monP[,2],wintP[,2],
SCI[,2],RE[,2],DSI[,2])
#-----
# Cluster Analysis modified after Zuming and Maohuan (1989)
# To create a cluster dendrogram of each individual variable
# To create a distance matrix using Euclidean distance method, i.e.,
measuring distance between scatter points (method=Euclidean)
clima.dist <- vegdist(data,method="euclidean")
# Uses UPGMA on distance matrix to create hierarchical structure
clima.upgma <- hclust(clima.dist, method = "average" )
#-----
# Plotting and grouping the data
# main cluster dendrogram using UPGMA (Romesburg, 2004)
plot(clima.upgma, hang = -1)
# Grouping/clustering
groups <- cutree(clima.upgma, k = 2:15) # cut tree into k=no of
groups/clusters; here 2 groups to 15 groups are chosen
# draw dendrogram with red borders around the group clusters
rect.hclust(clima.upgma, k = 5, border="red") # here only five groups
are chosen to highlight between 2 and 15
#-----
# To print the group table in workspace
print.table(groups)
# combined all the data that needs to print a text file
CAtable= cbind(groups, clima[, 1:17])
# To create the final text file
## "Directory need to change if using in another computer"
write.table(CAtable, "C:/users/folder_names/CA_groups.txt", sep="\t")
#-----
# 1st significance test of the clustering
# Calculate the cophenetic distances (Seaby and Henderson, 2014)
clima.coph.dist <- cophenetic(clima.upgma)
#check correlation between clima.dist and clima.upgma (it gives you a
r^2 value)
cor.test(clima.dist, cophenetic(clima.upgma))
#-----
# 2nd significance test of the clustering: 'ANOSIM'
# Read the table generated in the previous steps
climaCA <- read.table("CA_groups.txt", sep="\t")
# Significance test using ANOSIM (Clarke, 1993)
# from a group of 2 to 15; you can choose any one group to test
# GROUP of 2

```

```

# anosim(clima.dist, climaCA [,1], permutations = 999)
# GROUP of 3
# anosim(clima.dist, climaCA [,2], permutations = 999)
# GROUP of 4
# anosim(clima.dist, climaCA [,3], permutations = 999)
# GROUP of 5
anosim(clima.dist, climaCA [,4], permutations = 999) # no. of
permutations can be reduced to fasten the process
# GROUP of 6
# anosim(clima.dist, climaCA [,5], permutations = 999)
# GROUP of 7
# anosim(clima.dist, climaCA [,6], permutations = 999)
# GROUP of 8
# anosim(clima.dist, climaCA [,7], permutations = 999)
# GROUP of 9
# anosim(clima.dist, climaCA [,8], permutations = 999)
# GROUP of 10
# anosim(clima.dist, climaCA [,9], permutations = 999)
# GROUP of 11
# anosim(clima.dist, climaCA [,10], permutations = 999)
# GROUP of 12
# anosim(clima.dist, climaCA [,11], permutations = 999)
# GROUP of 13
anosim(clima.dist, climaCA [,12], permutations = 999)
# GROUP of 14
# anosim(clima.dist, climaCA [,13], permutations = 999)
# GROUP of 15
# anosim(clima.dist, climaCA [,14], permutations = 999)
# Copy and paste the results in a word file if required
#-----

```

CA results obtained using the R code were further evaluated using PCA (Fig. 3C). Such a comparison using two different statistical methods is not uncommon and proved successful in other fields [16]. We performed PCA to correlate climate parameters and represent them as a smaller set of uncorrelated (orthogonal) variables called principal components (PCs; Fig. 3C) [9]. PCs geometrically capture the directions of maximum variation in the data [3] and therefore, are used to compare and refine our CA generated groups (Fig. 3C). For example, please see Fig. 6 in Saha et al. [3].

```

#-----
# Continuing from the previous code
# Principal Component Analysis (PCA)
# Setting up the directory and file input
## "Directory need to change if using in another computer"
setwd("C:/users/folder_name/")
# Read the text file just generated file
climaPCA <- read.table("CA_groups.txt", sep="\t")
head(climaPCA) # for quick look
clima <- (cbind(climaPCA[, 23:31])) # binding the climate variables to
a matrix
#-----
# Initial plotting to see the relationship among variables
# Plot pairwise scatterplots
pairs(clima)
#-----
# Giving new column names

```



```

colnames(clima) <- c("AMeanTemp","ATempRange","ATotPrec","APrecRange",
"MonPrec","WintPrec","SCI", "RE","DSI")
#-----
# Computing the Principal Components (PC)
prin_comp <- prcomp (clima, scale. = T)
names(prin_comp)
"sdev" "rotation" "center" "x"
#outputs the mean variables
prin_comp$center
#outputs the standard deviation of variables
prin_comp$scale
#rotation measure provides the principal component loading
prin_comp$rotation
#Let's plot the resultant principal components
biplot(prin_comp, scale = 0)
#compute standard deviation of each principal component
std_dev <- prin_comp$sdev
std_dev
#compute variance
pr_var <- std_dev^2
pr_var
#proportion of variance explained
prop_varex <- pr_var/sum(pr_var)
prop_varex
#-----
# summarise PCA results
summary(prin_comp) # The summary method describes the importance of
PCs.
prin_comp $loadings # This is what you need to interpret
prin_comp $scores # Print the scores (projections)
# Save the txt file for PCA loadings
## "Directory need to change if using in other computer"
write.table(prin_comp$scores, "C:/users/folder_name/PCA$loadings.txt",
sep="\t")
# Write the txt file for PCA scores
write.table(prin_comp$scores, "C:/users/folder_name/PCA$scores.txt",
sep="\t")
#-----
# Plotting first 3 PCA scores
pc1 <- prin_comp$scores [ , c(1)]
pc2 <- prin_comp$scores [ , c(2)]
pc3 <- prin_comp$scores [ , c(3)]
# Creating a matrix
PC <- cbind(climaPCA[, 1:14],pc1,pc2,pc3)
#-----
# Colored presentation based on the number of groups
# To save time chose only the group that you would like to plot
# Other groups are provided for the reader's convenience (i.e.,
optional)
#-----
# GROUP: 2
#-----
#color coding groups of 2
colorgroups<-function(PC){

```

```

Group= vector(length=nrow(PC))
x<-cbind(PC,Group)
for(i in 1:nrow(x)){
# Number number of if statements = Number of groups
if(x[i,1]==1) {x[i,18]<-"yellow"}
if(x[i,1]==2) {x[i,18]<-"blue"}
}
print(x)
}
groupscolored <- colorgroups(PC)
# plot using any plot function, but for the argument "col=" use
"col=groupscolored
# PC1 vs PC2
plot (groupscolored[,15],groupscolored[,16], col=groupscolored[,18],
main = "GROUP:2'", xlab="PC1", ylab="PC2",pch=16)
# PC1 vs PC3
plot (groupscolored[,15],groupscolored[,17], col=groupscolored[,18],
main = "GROUP:2'", xlab="PC1", ylab="PC3",pch=16)
# PC2 vs PC3
plot (groupscolored[,16],groupscolored[,17], col=groupscolored[,18],
main = "GROUP:2'", xlab="PC2", ylab="PC3",pch=16)
plot3d (groupscolored[,15],groupscolored[,16],groupscolored[,17],
col=groupscolored[,18],
xlab="PC1", ylab="PC2", zlab="PC3", pch=16, size=8)
grid3d ("x", at = NULL, col = "gray", lwd = 1, lty = 1, n = 5)
grid3d ("y+", at = NULL, col = "gray", lwd = 1, lty = 1, n = 5)
grid3d ("z", at = NULL, col = "gray", lwd = 1, lty = 1, n = 5)
title3d("GROUP of 2'", col = 'red', line = 3)
# rgl snapshot and pdf vector
rgl.snapshot("GROUP_2.png", fmt="png")
rgl.postscript("GROUP_2.pdf", "pdf", drawText = TRUE)
#-----
# GROUP: 3
#-----
#color coding groups of 3
colorgroups<-function(PC){
Group= vector(length=nrow(PC))
x<-cbind(PC,Group)
for(i in 1:nrow(x)){
# Number of if statements = Number of groups
if(x[i,2]==1) {x[i,18]<-"yellow"}
if(x[i,2]==2) {x[i,18]<-"blue"}
if(x[i,2]==3) {x[i,18]<-"red"}
}
print(x)
}
groupscolored <- colorgroups(PC)
# plot using any plot function, but for the argument "col=" use
"col=groupscolored
# PC1 vs PC2
plot (groupscolored[,15],groupscolored[,16], col=groupscolored[,18],
main = "GROUP: 3'", xlab="PC1", ylab="PC2",pch=16)
# PC1 vs PC3
plot (groupscolored[,15],groupscolored[,17], col=groupscolored[,18],

```

```

main = "GROUP: 3'", xlab="PC1", ylab="PC3",pch=16)
# PC2 vs PC3
plot (groupscolors[,16],groupscolors[,17], col=groupscolors[,18],
main = "GROUP: 3'", xlab="PC2", ylab="PC3",pch=16)
plot3d (groupscolors[,15],groupscolors[,16],groupscolors[,17],
col=groupscolors[,18],
xlab="PC1", ylab="PC2", zlab="PC3", pch=16, size=8)
grid3d ("x", at = NULL, col = "gray", lwd = 1, lty = 1, n = 5)
grid3d ("y+", at = NULL, col = "gray", lwd = 1, lty = 1, n = 5)
grid3d ("z", at = NULL, col = "gray", lwd = 1, lty = 1, n = 5)
title3d("GROUP of 3'", col = 'red', line = 3)
# rgl snapshot and pdf vector
rgl.snapshot("GROUP_3.png", fmt="png")
rgl.postscript("GROUP_3.pdf", "pdf", drawText = TRUE)
#-----
# GROUP: 4
#-----
#color coding groups of 4
colorgroups<-function(PC){
Group= vector(length=nrow(PC))
x<-cbind(PC,Group)
for(i in 1:nrow(x)){
# Number of if statements = Number of groups
if(x[i,3]==1) {x[i,18]<-"yellow"}
if(x[i,3]==2) {x[i,18]<-"blue"}
if(x[i,3]==3) {x[i,18]<-"red"}
if(x[i,3]==4) {x[i,18]<-"green"}
}
print(x)
}
groupscolors <- colorgroups(PC)
# plot using any plot function, but for the argument "col=" use
"col=groupscolors
# PC1 vs PC2
plot (groupscolors[,15],groupscolors[,16], col=groupscolors[,18],
main = "GROUP: 4'", xlab="PC1", ylab="PC2",pch=16)
# PC1 vs PC3
plot (groupscolors[,15],groupscolors[,17], col=groupscolors[,18],
main = "GROUP: 4'", xlab="PC1", ylab="PC3",pch=16)
# PC2 vs PC3
plot (groupscolors[,16],groupscolors[,17], col=groupscolors[,18],
main = "GROUP: 4'", xlab="PC2", ylab="PC3",pch=16)
plot3d (groupscolors[,15],groupscolors[,16],groupscolors[,17],
col=groupscolors[,18],
xlab="PC1", ylab="PC2", zlab="PC3", pch=16, size=8)
grid3d ("x", at = NULL, col = "gray", lwd = 1, lty = 1, n = 5)
grid3d ("y+", at = NULL, col = "gray", lwd = 1, lty = 1, n = 5)
grid3d ("z", at = NULL, col = "gray", lwd = 1, lty = 1, n = 5)
title3d("GROUP of 4'", col = 'red', line = 3)
# rgl snapshot and pdf vector
rgl.snapshot("GROUP_4.png", fmt="png")
rgl.postscript("GROUP_4.pdf", "pdf", drawText = TRUE)
#-----

```

```

# GROUP: 5 (used in this study)
#-----
#color coding groups of 5
colorgroups<-function(PC){
  Group= vector(length=nrow(PC))
  x<-cbind(PC,Group)
  for(i in 1:nrow(x)){
    # Number of if statements = Number of groups
    if(x[i,4]==1) {x[i,18]<-"yellow"}
    if(x[i,4]==2) {x[i,18]<-"blue"}
    if(x[i,4]==3) {x[i,18]<-"red"}
    if(x[i,4]==4) {x[i,18]<-"green"}
    if(x[i,4]==5) {x[i,18]<-"orange"}
  }
  print(x)
}
groupscolored <- colorgroups(PC)
# plot using any plot function, but for the argument "col=" use
"col=groupscolored
# PC1 vs PC2
plot (groupscolored[,15],groupscolored[,16], col=groupscolored[,18],
      main = "GROUP: 5", xlab="PC1", ylab="PC2",pch=16)
# PC1 vs PC3
plot (groupscolored[,15],groupscolored[,17], col=groupscolored[,18],
      main = "GROUP: 5", xlab="PC1", ylab="PC3",pch=16)
# PC2 vs PC3
plot (groupscolored[,16],groupscolored[,17], col=groupscolored[,18],
      main = "GROUP: 5", xlab="PC2", ylab="PC3",pch=16)
plot3d (groupscolored[,15],groupscolored[,16],groupscolored[,17],
        col=groupscolored[,18],
        xlab="PC1", ylab="PC2", zlab="PC3", pch=16, size=8)
grid3d ("x", at = NULL, col = "gray", lwd = 1, lty = 1, n = 5)
grid3d ("y+", at = NULL, col = "gray", lwd = 1, lty = 1, n = 5)
grid3d ("z", at = NULL, col = "gray", lwd = 1, lty = 1, n = 5)
title3d("GROUP of 5", col = 'red', line = 3)
grid3d ("x", at = NULL, col = "gray", lwd = 1, lty = 1, n = 5)
grid3d ("y+", at = NULL, col = "gray", lwd = 1, lty = 1, n = 5)
grid3d ("z", at = NULL, col = "gray", lwd = 1, lty = 1, n = 5)
title3d("GROUP of 5", col = 'red', line = 3)
# rgl snapshot and pdf vector
rgl.snapshot("GROUP_5.png", fmt="png")
rgl.postscript("GROUP_5.pdf", "pdf", drawText = TRUE)
#-----
# GROUP: 6
#-----
#color coding groups of 6
colorgroups<-function(PC){
  Group= vector(length=nrow(PC))
  x<-cbind(PC,Group)
  for(i in 1:nrow(x)){
    # Number of if statements = Number of groups
    if(x[i,5]==1) {x[i,18]<-"yellow"}
    if(x[i,5]==2) {x[i,18]<-"blue"}
    if(x[i,5]==3) {x[i,18]<-"red"}

```

```

if(x[,5]==4) {x[,18]<-"green"}
if(x[,5]==5) {x[,18]<-"orange"}
if(x[,5]==6) {x[,18]<-"purple"}
}
print(x)
}
groupscolored <- colorgroups(PC)
# plot using any plot function, but for the argument "col=" use
"col=groupscolored
# PC1 vs PC2
plot (groupscolored[,15],groupscolored[,16], col=groupscolored[,18],
main = "GROUP: 6", xlab="PC1", ylab="PC2",pch=16)
# PC1 vs PC3
plot (groupscolored[,15],groupscolored[,17], col=groupscolored[,18],
main = "GROUP: 6", xlab="PC1", ylab="PC3",pch=16)
# PC2 vs PC3
plot (groupscolored[,16],groupscolored[,17], col=groupscolored[,18],
main = "GROUP: 6", xlab="PC2", ylab="PC3",pch=16)
plot3d (groupscolored[,15],groupscolored[,16],groupscolored[,17],
col=groupscolored[,18],
xlab="PC1", ylab="PC2", zlab="PC3", pch=16, size=8)
grid3d ("x", at = NULL, col = "gray", lwd = 1, lty = 1, n = 5)
grid3d ("y+", at = NULL, col = "gray", lwd = 1, lty = 1, n = 5)
grid3d ("z", at = NULL, col = "gray", lwd = 1, lty = 1, n = 5)
title3d("GROUP of 6", col = 'red', line = 3)
# rgl snapshot and pdf vector
rgl.snapshot("GROUP_6.png", fmt="png")
rgl.postscript("GROUP_6.pdf", "pdf", drawText = TRUE)
#-----
# GROUP: 7
#-----
#color coding groups of 7
colorgroups<-function(PC){
Group= vector(length=nrow(PC))
x<-cbind(PC,Group)
for(i in 1:nrow(x)){
# Number of if statements = Number of groups
if(x[,6]==1) {x[,18]<-"yellow"}
if(x[,6]==2) {x[,18]<-"blue"}
if(x[,6]==3) {x[,18]<-"red"}
if(x[,6]==4) {x[,18]<-"green"}
if(x[,6]==5) {x[,18]<-"orange"}
if(x[,6]==6) {x[,18]<-"purple"}
if(x[,6]==7) {x[,18]<-"deeppink"}
}
print(x)
}
groupscolored <- colorgroups(PC)
# plot using any plot function, but for the argument "col=" use
"col=groupscolored
# PC1 vs PC2
plot (groupscolored[,15],groupscolored[,16], col=groupscolored[,18],
main = "GROUP: 7", xlab="PC1", ylab="PC2",pch=16)
# PC1 vs PC3

```

```

plot (groupscolored[,15],groupscolored[,17], col=groupscolored[,18],
main = "GROUP: 7'", xlab="PC1", ylab="PC3",pch=16)
# PC2 vs PC3
plot (groupscolored[,16],groupscolored[,17], col=groupscolored[,18],
main = "GROUP: 7'", xlab="PC2", ylab="PC3",pch=16)
plot3d (groupscolored[,15],groupscolored[,16],groupscolored[,17],
col=groupscolored[,18],
xlab="PC1", ylab="PC2", zlab="PC3", pch=16, size=8)
grid3d ("x", at = NULL, col = "gray", lwd = 1, lty = 1, n = 5)
grid3d ("y+", at = NULL, col = "gray", lwd = 1, lty = 1, n = 5)
grid3d ("z", at = NULL, col = "gray", lwd = 1, lty = 1, n = 5)
title3d("GROUP of 7'", col = 'red', line = 3)
# rgl snapshot and pdf vector
rgl.snapshot("GROUP_7.png", fmt="png")
rgl.postscript("GROUP_7.pdf", "pdf", drawText = TRUE)
#-----
# GROUP: 8
#-----
#color coding groups of 8
colorgroups<-function(PC){
Group= vector(length=nrow(PC))
x<-cbind(PC,Group)
for(i in 1:nrow(x)){
# Number of if statements = Number of groups
if(x[i,7]==1) {x[i,18]<-"yellow"}
if(x[i,7]==2) {x[i,18]<-"blue"}
if(x[i,7]==3) {x[i,18]<-"red"}
if(x[i,7]==4) {x[i,18]<-"green"}
if(x[i,7]==5) {x[i,18]<-"orange"}
if(x[i,7]==6) {x[i,18]<-"purple"}
if(x[i,7]==7) {x[i,18]<-"deeppink"}
if(x[i,7]==8) {x[i,18]<-"chocolate"}
}
print(x)
}
groupscolored <- colorgroups(PC)
# plot using any plot function, but for the argument "col=" use
"col=groupscolored
# PC1 vs PC2
plot (groupscolored[,15],groupscolored[,16], col=groupscolored[,18],
main = "GROUP: 8'", xlab="PC1", ylab="PC2",pch=16)
# PC1 vs PC3
plot (groupscolored[,15],groupscolored[,17], col=groupscolored[,18],
main = "GROUP: 8'", xlab="PC1", ylab="PC3",pch=16)
# PC2 vs PC3
plot (groupscolored[,16],groupscolored[,17], col=groupscolored[,18],
main = "GROUP: 8'", xlab="PC2", ylab="PC3",pch=16)
plot3d (groupscolored[,15],groupscolored[,16],groupscolored[,17],
col=groupscolored[,18],
xlab="PC1", ylab="PC2", zlab="PC3", size=8)
grid3d ("x", at = NULL, col = "gray", lwd = 1, lty = 1, n = 5)
grid3d ("y+", at = NULL, col = "gray", lwd = 1, lty = 1, n = 5)
grid3d ("z", at = NULL, col = "gray", lwd = 1, lty = 1, n = 5)
title3d("GROUP of 8'", col = 'red', line = 3)

```

```

# rgl snapshot and pdf vector
rgl.snapshot("GROUP_8.png", fmt="png")
rgl.postscript("GROUP_8.pdf", "pdf", drawText = TRUE)
#-----
# GROUP: 9
#-----
#color coding groups of 9
colorgroups<-function(PC){
Group= vector(length=nrow(PC))
x<-cbind(PC,Group)
for(i in 1:nrow(x)){
# Number of if statements = Number of groups
if(x[i,8]==1) {x[i,18]<-"yellow"}
if(x[i,8]==2) {x[i,18]<-"blue"}
if(x[i,8]==3) {x[i,18]<-"red"}
if(x[i,8]==4) {x[i,18]<-"green"}
if(x[i,8]==5) {x[i,18]<-"orange"}
if(x[i,8]==6) {x[i,18]<-"purple"}
if(x[i,8]==7) {x[i,18]<-"deeppink"}
if(x[i,8]==8) {x[i,18]<-"chocolate"}
if(x[i,8]==9) {x[i,18]<-"gold"}
}
print(x)
}
groupscolored <- colorgroups(PC)
# plot using any plot function, but for the argument "col=" use
"col=groupscolored
# PC1 vs PC2
plot (groupscolored[,15],groupscolored[,16], col=groupscolored[,18],
main = "GROUP: 9", xlab="PC1", ylab="PC2",pch=16)
# PC1 vs PC3
plot (groupscolored[,15],groupscolored[,17], col=groupscolored[,18],
main = "GROUP: 9", xlab="PC1", ylab="PC3",pch=16)
# PC2 vs PC3
plot (groupscolored[,16],groupscolored[,17], col=groupscolored[,18],
main = "GROUP: 9", xlab="PC2", ylab="PC3",pch=16)
plot3d (groupscolored[,15],groupscolored[,16],groupscolored[,17],
col=groupscolored[,18],
xlab="PC1", ylab="PC2", zlab="PC3", pch=16, size=8)
grid3d ("x", at = NULL, col = "gray", lwd = 1, lty = 1, n = 5)
grid3d ("y+", at = NULL, col = "gray", lwd = 1, lty = 1, n = 5)
grid3d ("z", at = NULL, col = "gray", lwd = 1, lty = 1, n = 5)
title3d("GROUP of 9", col = 'red', line = 3)
# rgl snapshot and pdf vector
rgl.snapshot("GROUP_9.png", fmt="png")
rgl.postscript("GROUP_9.pdf", "pdf", drawText = TRUE)
#-----
# GROUP: 10
#-----
#color coding groups of 10
colorgroups<-function(PC){
Group= vector(length=nrow(PC))
x<-cbind(PC,Group)
for(i in 1:nrow(x)){

```

```

# Number of if statements = Number of groups
if(x[i,9]==1) {x[i,18]<-"yellow"}
if(x[i,9]==2) {x[i,18]<-"blue"}
if(x[i,9]==3) {x[i,18]<-"red"}
if(x[i,9]==4) {x[i,18]<-"green"}
if(x[i,9]==5) {x[i,18]<-"orange"}
if(x[i,9]==6) {x[i,18]<-"purple"}
if(x[i,9]==7) {x[i,18]<-"deeppink"}
if(x[i,9]==8) {x[i,18]<-"chocolate"}
if(x[i,9]==9) {x[i,18]<-"gold"}
if(x[i,9]==10) {x[i,18]<-"cyan"}
}
print(x)
}
groupscolored <- colorgroups(PC)
# plot using any plot function, but for the argument "col=" use
"col=groupscolored
# PC1 vs PC2
plot (groupscolored[,15],groupscolored[,16], col=groupscolored[,18],
main = "GROUP: 10", xlab="PC1", ylab="PC2",pch=16)
# PC1 vs PC3
plot (groupscolored[,15],groupscolored[,17], col=groupscolored[,18],
main = "GROUP: 10", xlab="PC1", ylab="PC3",pch=16)
# PC2 vs PC3
plot (groupscolored[,16],groupscolored[,17], col=groupscolored[,18],
main = "GROUP: 10", xlab="PC2", ylab="PC3",pch=16)
plot3d (groupscolored[,15],groupscolored[,16],groupscolored[,17],
col=groupscolored[,18],
xlab="PC1", ylab="PC2", zlab="PC3", pch=16, size=8)
grid3d ("x", at = NULL, col = "gray", lwd = 1, lty = 1, n = 5)
grid3d ("y+", at = NULL, col = "gray", lwd = 1, lty = 1, n = 5)
grid3d ("z", at = NULL, col = "gray", lwd = 1, lty = 1, n = 5)
title3d("GROUP of 10", col = 'red', line = 3)
# rgl snapshot and pdf vector
rgl.snapshot("GROUP_10.png", fmt="png")
rgl.postscript("GROUP_10.pdf", "pdf", drawText = TRUE)
#-----
# GROUP: 11
#-----
#color coding groups of 11
colorgroups<-function(PC){
Group= vector(length=nrow(PC))
x<-cbind(PC,Group)
for(i in 1:nrow(x)){
# Number of if statements = Number of groups
if(x[i,10]==1) {x[i,18]<-"yellow"}
if(x[i,10]==2) {x[i,18]<-"blue"}
if(x[i,10]==3) {x[i,18]<-"red"}
if(x[i,10]==4) {x[i,18]<-"green"}
if(x[i,10]==5) {x[i,18]<-"orange"}
if(x[i,10]==6) {x[i,18]<-"purple"}
if(x[i,10]==7) {x[i,18]<-"deeppink"}
if(x[i,10]==8) {x[i,18]<-"chocolate"}
if(x[i,10]==9) {x[i,18]<-"gold"}

```



```

if(x[i,10]==10) {x[i,18]<-"cyan"}
if(x[i,10]==11) {x[i,18]<-"darkkhaki"}
}
print(x)
}
groupscolored <- colorgroups(PC)
# plot using any plot function, but for the argument "col=" use
"col=groupscolored
# PC1 vs PC2
plot (groupscolored[,15],groupscolored[,16], col=groupscolored[,18],
main = "GROUP: 11", xlab="PC1", ylab="PC2",pch=16)
# PC1 vs PC3
plot (groupscolored[,15],groupscolored[,17], col=groupscolored[,18],
main = "GROUP: 11", xlab="PC1", ylab="PC3",pch=16)
# PC2 vs PC3
plot (groupscolored[,16],groupscolored[,17], col=groupscolored[,18],
main = "GROUP: 11", xlab="PC2", ylab="PC3",pch=16)
plot3d (groupscolored[,15],groupscolored[,16],groupscolored[,17],
col=groupscolored[,18],
xlab="PC1", ylab="PC2", zlab="PC3", pch=16, size=8)
grid3d ("x", at = NULL, col = "gray", lwd = 1, lty = 1, n = 5)
grid3d ("y+", at = NULL, col = "gray", lwd = 1, lty = 1, n = 5)
grid3d ("z", at = NULL, col = "gray", lwd = 1, lty = 1, n = 5)
title3d("GROUP of 11", col = 'red', line = 3)
# rgl snapshot and pdf vector
rgl.snapshot("GROUP_11.png", fmt="png")
rgl.postscript("GROUP_11.pdf", "pdf", drawText = TRUE)
#-----
# GROUP: 12
#-----
#color coding groups of 12
colorgroups<-function(PC){
Group= vector(length=nrow(PC))
x<-cbind(PC,Group)
for(i in 1:nrow(x)){
# Number of if statements = Number of groups
if(x[i,11]==1) {x[i,18]<-"yellow"}
if(x[i,11]==2) {x[i,18]<-"blue"}
if(x[i,11]==3) {x[i,18]<-"red"}
if(x[i,11]==4) {x[i,18]<-"green"}
if(x[i,11]==5) {x[i,18]<-"orange"}
if(x[i,11]==6) {x[i,18]<-"purple"}
if(x[i,11]==7) {x[i,18]<-"deeppink"}
if(x[i,11]==8) {x[i,18]<-"chocolate"}
if(x[i,11]==9) {x[i,18]<-"gold"}
if(x[i,11]==10) {x[i,18]<-"cyan"}
if(x[i,11]==11) {x[i,18]<-"darkkhaki"}
if(x[i,11]==12) {x[i,18]<-"sienna"}
}
print(x)
}
groupscolored <- colorgroups(PC)
# plot using any plot function, but for the argument "col=" use
"col=groupscolored

```

```

# PC1 vs PC2
plot (groupscolored[,15],groupscolored[,16], col=groupscolored[,18],
main = "GROUP: 12'", xlab="PC1", ylab="PC2",pch=16)
# PC1 vs PC3
plot (groupscolored[,15],groupscolored[,17], col=groupscolored[,18],
main = "GROUP: 12'", xlab="PC1", ylab="PC3",pch=16)
# PC2 vs PC3
plot (groupscolored[,16],groupscolored[,17], col=groupscolored[,18],
main = "GROUP: 12'", xlab="PC2", ylab="PC3",pch=16)
plot3d (groupscolored[,15],groupscolored[,16],groupscolored[,17],
col=groupscolored[,18],
xlab="PC1", ylab="PC2", zlab="PC3", pch=16, size=8)
grid3d ("x", at = NULL, col = "gray", lwd = 1, lty = 1, n = 5)
grid3d ("y+", at = NULL, col = "gray", lwd = 1, lty = 1, n = 5)
grid3d ("z", at = NULL, col = "gray", lwd = 1, lty = 1, n = 5)
title3d("GROUP of 12'", col = 'red', line = 3)
# rgl snapshot and pdf vector
rgl.snapshot("GROUP_12.png", fmt="png")
rgl.postscript("GROUP_12.pdf", "pdf", drawText = TRUE)
#-----
# GROUP: 13
#-----
#color coding groups of 13
colorgroups<-function(PC){
Group= vector(length=nrow(PC))
x<-cbind(PC,Group)
for(i in 1:nrow(x)){
# Number of if statements = Number of groups
if(x[i,12]==1) {x[i,18]<-"yellow"}
if(x[i,12]==2) {x[i,18]<-"blue"}
if(x[i,12]==3) {x[i,18]<-"red"}
if(x[i,12]==4) {x[i,18]<-"green"}
if(x[i,12]==5) {x[i,18]<-"orange"}
if(x[i,12]==6) {x[i,18]<-"purple"}
if(x[i,12]==7) {x[i,18]<-"deeppink"}
if(x[i,12]==8) {x[i,18]<-"chocolate"}
if(x[i,12]==9) {x[i,18]<-"gold"}
if(x[i,12]==10) {x[i,18]<-"cyan"}
if(x[i,12]==11) {x[i,18]<-"darkkhaki"}
if(x[i,12]==12) {x[i,18]<-"sienna"}
if(x[i,12]==13) {x[i,18]<-"indianred"}
}
print(x)
}
groupscolored <- colorgroups(PC)
# plot using any plot function, but for the argument "col=" use
"col=groupscolored
# PC1 vs PC2
plot (groupscolored[,15],groupscolored[,16], col=groupscolored[,18],
main = "GROUP: 13'", xlab="PC1", ylab="PC2",pch=16)
# PC1 vs PC3
plot (groupscolored[,15],groupscolored[,17], col=groupscolored[,18],
main = "GROUP: 13'", xlab="PC1", ylab="PC3",pch=16)
# PC2 vs PC3

```

```

plot (groupscolored[,16],groupscolored[,17], col=groupscolored[,18],
main = "GROUP: 13", xlab="PC2", ylab="PC3",pch=16)
plot3d (groupscolored[,15],groupscolored[,16],groupscolored[,17],
col=groupscolored[,18],
xlab="PC1", ylab="PC2", zlab="PC3", pch=16, size=8)
grid3d ("x", at = NULL, col = "gray", lwd = 1, lty = 1, n = 5)
grid3d ("y+", at = NULL, col = "gray", lwd = 1, lty = 1, n = 5)
grid3d ("z", at = NULL, col = "gray", lwd = 1, lty = 1, n = 5)
title3d("GROUP of 13", col = 'red', line = 3)
# rgl snapshot and pdf vector
rgl.snapshot("GROUP_13.png", fmt="png")
rgl.postscript("GROUP_13.pdf", "pdf", drawText = TRUE)
#-----
# GROUP: 14
#-----
#color coding groups of 14
colorgroups<-function(PC){
Group= vector(length=nrow(PC))
x<-cbind(PC,Group)
for(i in 1:nrow(x)){
# Number of if statements = Number of groups
if(x[i,13]==1) {x[i,18]<-"yellow"}
if(x[i,13]==2) {x[i,18]<-"blue"}
if(x[i,13]==3) {x[i,18]<-"red"}
if(x[i,13]==4) {x[i,18]<-"green"}
if(x[i,13]==5) {x[i,18]<-"orange"}
if(x[i,13]==6) {x[i,18]<-"purple"}
if(x[i,13]==7) {x[i,18]<-"deeppink"}
if(x[i,13]==8) {x[i,18]<-"chocolate"}
if(x[i,13]==9) {x[i,18]<-"gold"}
if(x[i,13]==10) {x[i,18]<-"cyan"}
if(x[i,13]==11) {x[i,18]<-"darkkhaki"}
if(x[i,13]==12) {x[i,18]<-"sienna"}
if(x[i,13]==13) {x[i,18]<-"indianred"}
if(x[i,13]==14) {x[i,18]<-"khaki"}
}
print(x)
}
groupscolored <- colorgroups(PC)
# plot using any plot function, but for the argument "col=" use
"col=groupscolored
# PC1 vs PC2
plot (groupscolored[,15],groupscolored[,16], col=groupscolored[,18],
main = "", xlab="PC1", ylab="PC2",pch=16)
# PC1 vs PC3
plot (groupscolored[,15],groupscolored[,17], col=groupscolored[,18],
main = "GROUP: 14", xlab="PC1", ylab="PC3",pch=16)
# PC2 vs PC3
plot (groupscolored[,16],groupscolored[,17], col=groupscolored[,18],
main = "GROUP: 14", xlab="PC2", ylab="PC3",pch=16)
plot3d (groupscolored[,15],groupscolored[,16],groupscolored[,17],
col=groupscolored[,18],
xlab="PC1", ylab="PC2", zlab="PC3", pch=16, size=8)
grid3d ("x", at = NULL, col = "gray", lwd = 1, lty = 1, n = 5)

```

```

grid3d ("y+", at = NULL, col = "gray", lwd = 1, lty = 1, n = 5)
grid3d ("z", at = NULL, col = "gray", lwd = 1, lty = 1, n = 5)
title3d("GROUP of 14", col = 'red', line = 3)
# rgl snapshot and pdf vector
rgl.snapshot("GROUP_14.png", fmt="png")
rgl.postscript("GROUP_14.pdf", "pdf", drawText = TRUE)
#-----
# GROUP: 15
#-----
#color coding groups of 15
colorgroups<-function(PC){
Group= vector(length=nrow(PC))
x<-cbind(PC,Group)
for(i in 1:nrow(x)){
# Number of if statements = Number of groups
if(x[i,14]==1) {x[i,18]<-"yellow"}
if(x[i,14]==2) {x[i,18]<-"blue"}
if(x[i,14]==3) {x[i,18]<-"red"}
if(x[i,14]==4) {x[i,18]<-"green"}
if(x[i,14]==5) {x[i,18]<-"orange"}
if(x[i,14]==6) {x[i,18]<-"purple"}
if(x[i,14]==7) {x[i,18]<-"deeppink"}
if(x[i,14]==8) {x[i,18]<-"chocolate"}
if(x[i,14]==9) {x[i,18]<-"gold"}
if(x[i,14]==10) {x[i,18]<-"cyan"}
if(x[i,14]==11) {x[i,18]<-"darkkhaki"}
if(x[i,14]==12) {x[i,18]<-"sienna"}
if(x[i,14]==13) {x[i,18]<-"indianred"}
if(x[i,14]==14) {x[i,18]<-"khaki"}
if(x[i,14]==15) {x[i,18]<-"lightblue"}
}
print(x)
}
groupscolored <- colorgroups(PC)
# plot using any plot function, but for the argument "col=" use
"col=groupscolored
# PC1 vs PC2
plot (groupscolored[,15],groupscolored[,16], col=groupscolored[,18],
main = "GROUP: 15", xlab="PC1", ylab="PC2",pch=16)
# PC1 vs PC3
plot (groupscolored[,15],groupscolored[,17], col=groupscolored[,18],
main = "GROUP: 15", xlab="PC1", ylab="PC3",pch=16)
# PC2 vs PC3
plot (groupscolored[,16],groupscolored[,17], col=groupscolored[,18],
main = "GROUP: 15", xlab="PC2", ylab="PC3",pch=16)
plot3d (groupscolored[,15],groupscolored[,16],groupscolored[,17],
col=groupscolored[,18],
xlab="PC1", ylab="PC2", zlab="PC3", pch=16, size=8)
grid3d ("x", at = NULL, col = "gray", lwd = 1, lty = 1, n = 5)
grid3d ("y+", at = NULL, col = "gray", lwd = 1, lty = 1, n = 5)
grid3d ("z", at = NULL, col = "gray", lwd = 1, lty = 1, n = 5)
title3d("GROUP of 15", col = 'red', line = 3)
# rgl snapshot and pdf vector
rgl.snapshot("GROUP_15.png", fmt="png")

```

```
rgl.postscript("GROUP_15.pdf", "pdf", drawText = TRUE)
#-----
```

Age statistics

Local glacial stages

True moraine ages or local glacial stages (e.g., Saha et al. [3]) may be assessed using a variety of statistical methods. For example, reduced chi-squared (χ^2) statistics (or mean square weighted deviation [MSWD]) is often applied to assess the distribution of apparent moraine ages [17,18]. Any age population with $\chi^2 > 1$ indicates poor goodness of fit indicating large scatter/outliers; $\chi^2 > 1$ but $< 95\%$ confidence interval indicates acceptable outliers or acceptable goodness of fit between observations and estimates. Outliers may also be detected and removed from the age population using other statistical techniques, including Chauvenet's criterion [19]. Since numerical ages are assumed to have normal distribution probabilities, Chauvenet's criterion is a powerful tool. Other quantitative methods commonly applied to detect outliers, but not shown here, include skewness [17,18], probability density estimates [20], two standard deviations from the mean [21], two mean absolute deviations from the median [22], and generalized extreme Students deviates [23]. We encourage the readers to explore these methods as well to cross-validate their results. However, note that these are entirely statistical treatments that do not consider the background geological conditions. We therefore argue that readers must evaluate their statistically detected outliers with detail field observations before removing them from further analysis [3].

Outlier free apparent moraine ages may be used to estimate mean moraine ages or true moraine ages [17,18] or local glacial stages [3]. Several popular measures of central values are the arithmetic mean \pm standard deviation (sd), weighted mean \pm weighted sd, and median \pm sd (Fig. 4) [17,18]. The apparent ages can be visualized through the kernel density (relative probability) plots and histogram (Fig. 4). Additionally, skewness and kurtosis may also be useful to infer whether ages have longer

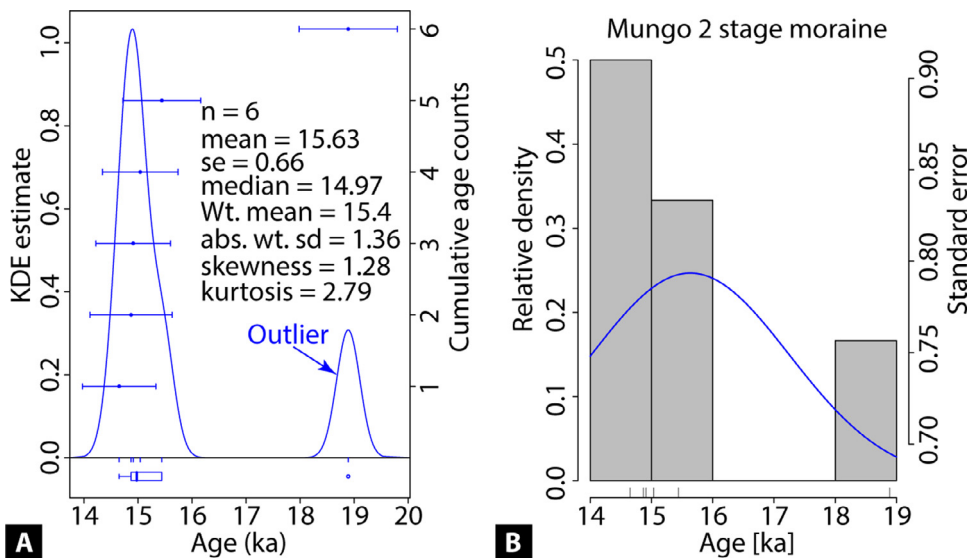


Fig. 4. Kernel density estimation [KDE] (A) and histogram (B) showing the distribution of ^{10}Be ages. The six ages [14.7 \pm 0.7, 14.9 \pm 0.7, 15.0 \pm 0.7, 14.9 \pm 0.8, 18.9 \pm 0.9, 15.4 \pm 0.7] are compiled from the Mungo 2 stage moraine after Seong et al. [24]. The sample age with $\chi^2 > 2$ (i.e., ~19 ka) is identified as an outlier and must be removed from further analysis. Here, the summary statistics include the outlier. Readers must note that the summary statistics must be used on outlier free distribution for publication purposes.

tail distribution or positively skewed (possibly inheritance) or younger tail distribution or negatively skewed (possibly incomplete exposure) (see [17,18] for further explanation).

Note that most of the statistical methods stated here work for ≥ 3 apparent ages on a moraine. Since chronological studies often use limited discrete ages/samples, cautioned must be performed in applying these statistical techniques and interpreting the ages. Below is a compilation of the statistical methods stated above in R modified from different sources. For example, the χ^2 test is modified after Applegate et al. [18]; Chauvenet's criterion after Taylor [19]; R luminescence package from <https://CRAN.R-project.org/> package=Luminescence. Supplementary Table S2 can be used as a template.

```
#-----
# Reduced Chi-Square test
# Setting up the directory and file input
## "Directory need to change if using in another computer"
setwd("C:/users/folder_name/")
# File input; use template S2
data<-read.csv(file.choose()) # Read the CSV file
head(data) # For a quick look of the file to see the variables
#-----
# Reduced Chi-Square test ( $X^2$ -squared test) modified after Applegate
et al. (2012)
age.mean= mean(data$Age)
chi.squared= (1/(length(data$Age)-1))*(sum((data$Age-age.mean)^2/
(data$Err)^2))
print(chi.squared) # Read from the console
# If the X-squared value is >1, check for outliers
#-----
# Outliers detection using Chauvenet's criterion after Taylor (1997)
# A minimum of 3 data (n) requires performing this technique
Chauvenet=sqrt((((data$Age-(mean(data$Age)))/sd(data$Age)))^2)
print(Chauvenet) # Read from the console if limited n is used
print(length(data$Age)) # Look at the Chauvenet's table
# Otherwise save as csv file
write.table(Chauvenet, " C:/users/folder_name/Chauvenet.csv", sep=",")
# Look at the Chauvenet's table at https://www.statisticshowto.com/datasciencecentral.com/chauvenets-criterion/
# Any value higher than the tabulated value may be regarded as
outliers
# Remove the outliers, repeat the chi-squared test and Chauvenet's
criterion
#-----
# Check for age distribution in kernel density estimation [KDE] &
histogram with summary statistics (Fig. 4A)
# Install necessary packages @ https://CRAN.R-project.org/ package=
Luminescence
install.packages("Luminescence")
library(Luminescence)
# Plot the kernel density estimate with summary statistics
KDE_out <-plot_KDE(data = data, main = " Age distribution [ka]",
xlab = " Age [ka]",
ylab = c("KDE estimate", "Cumulative age counts"),
boxplot = TRUE,
summary = c("n","mean","se.abs","median","skewness","kurtosis"),
summary.pos = "topleft",
col = c("blue", "orange"),
output = TRUE)
```

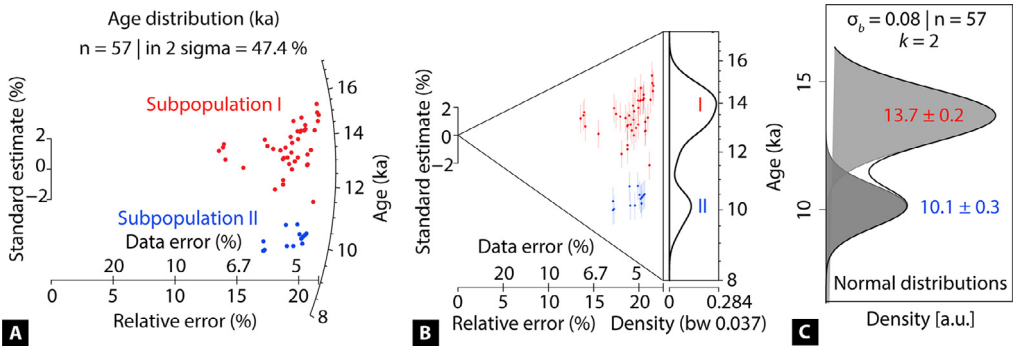


Fig. 5. Plots displaying local stage/age distribution and discrete subpopulations. Subpopulations are color-coded separately to highlight them in the plots. (A) Radial plotter, (B) Abanico plot, and (C) Finite mixture model (FMM) all showing the two distinct age subpopulations or local stages. Age data are derived from Table 5 of Saha et al. [3] (i.e., the first two local glacial stages in climatic zone 1a).

```

#-----
# Plot histogram with summary statistics (Fig. 4B)
plot_histogram(data,
rug = TRUE,
normal_curve = TRUE,
cex.global = 1,
pch = 1,
color = c("gray", "black", "blue", "green"),
summary = c("n", "mean.weighted", "sdabs.weighted"),
summary.pos = "topleft",
main = "Histogram of apparent ages",
mtext = "XX stage moraine",
xlab = c("Age [ka]"),
ylab = c("Relative density",
"Standard error"))
#-----

```

Regional glacial stages

Once local glacial stages are defined and organized according to the climatic groups/zones discussed in Section 1, discrete regional glacial stages may be identified using a variety of visual and statistical techniques. For example, Radial plots (Fig. 5A) [25] and Abanico plots (Fig. 5B) [26] are visually useful to identify distinct subpopulations. These subpopulations can also be detected quantitatively using the finite mixture model (Fig. 5C) [25,27] and Student's *t*-test [28]. The following R codes incorporate these visual and statistical tools [3]. Use Table S2 as a template where the first column is the mean moraine age in ka, and the 2nd column is $\pm 1\sigma$ (internal error) in ka.

Additional useful methods may include the probability density function of Dortch et al. [2] (not shown here). We evaluated our results with the PDF techniques of Dortch et al. [2] (see Fig. S9 in Saha et al. [3]) and found no significant difference.

```

# Setting up the directory and file input
## "Directory need to change if using in other computer"
setwd("C:/users/folder_name/")
# file input
# AGES ARE IN KA (i.e., 1000 years)
data<-read.csv(file.choose()) # read the csv file;

```

```

head(data) # for quick look of the file to see the variables
#-----
#install package "Luminescence"
install.packages("Luminescence")
library(Luminescence) #load luminescence package
#-----
# Visual method
# Radial plotter (Galbraith et al., 1999) (Fig. 5A)
plot_RadialPlot(data = data, grid.col = "none", y.ticks = TRUE,
output = TRUE, lwd = 0,
main = " Age distribution (ka)",
xlab = c("Data error (%)", "Relative error (%)"),
ylab = "Standard estimate (%)",
zlab = "Age (ka)", summary = c("n", "in.2s"))
#-----
# Abanico Plot (Burow, 2018) using the same data (Fig. 5B)
plot_AbanicoPlot(data = data, bar.col = FALSE, grid.col = "none",
main = " Age distribution (ka)",
xlab = c("Data error (%)", "Relative error (%)"),
ylab = "Standard estimate (%)", zlab = "Age (ka)",
y.axis = TRUE,
error.bars = TRUE)
#-----
# Statistical models
# Finite mixture model (FMM; Galbraith et al., 1999) (Fig. 5C)
# FMM works better when ages are in years
samp.data=(data *1000) #changing the age data from ka to a (i.e.,
years)
head(samp.data)
# Note: Change the "dose.scale" to have your appropriate age range;
here 0 to 18,000 years
# Change "sigmab"; low value for finer resolution and high for coarse
resolution
# A warning message mean your "sigmab" value is either too low or too
high (try changing it)
# Here we used a conservative 8% (can be changed based on the data)
# Try using a consistent "sigmab" value between regional stages for
consistency
# n.components can also be varied based on number of possible
supopultaion and BIC score
calc_FiniteMixture(data=samp.data, sigmab=0.08, n.components=c(2:4),
grain.probability = TRUE,
dose.scale=c(0, 18,000), pdf.weight = TRUE, main = " Age distribution
(yr)")
# Lowest BIC score for k should be used to differentiate regional
glacial stages
#-----
#-----
# Fisher's F-test (may be tested before t-test; optional)
# F-test indicates the homogeneity between two variances
# Setting up the directory and file input
## "Directory need to change if using in another computer"
setwd("C:/users/folder_name/")
# File input; Supplementary table S2 is used as a template

```



```

samp<-read.csv(file.choose()) # Read the CSV file
head(samp) # For a quick look of the file to see the variables
# Local stages/mean moraine ages are Separated based on above methods
# Manually assign the range
# Group 1 -----
group1= (samp[1:50, 1]) # Rows/groups must be assigned based on above
methods
NewOld1= ((samp[1:50, 1])+(samp[1:50, 2])) # Rows/groups max range;
enter the range manually
NewYoung1= ((samp[1:50, 1])-(samp[1:50, 2])) # Rows/groups min range;
enter the range manually
# Binding the max and min ages together to the mean moraine ages
group1<- rbind(group1, NewOld1)
group1<- rbind(group1, NewYoung1)
# Group 2 -----
group2= (samp[51:64, 1]) # Rows/groups range must be assigned based on
above methods
NewOld2= ((samp[51:64, 1])+(samp[51:64, 1])) # Rows/groups max range;
enter the range manually
NewYoung2= ((samp[51:64, 1])-(samp[51:64, 1])) # Rows/groups min
range; enter the range manually
# Binding the max and min ages together to the mean moraine ages
group2<- rbind(group2, NewOld2)
group2<- rbind(group2, NewYoung2)
#-----
# Fisher's F-test to compare two groups
var.test(group2, group1) # record the result from the console
# If p-value is <0.05, we can tentatively assume that two groups are
not homogeneous
# However, a best way to check our results is by looking at the
tabulated F-value
# To get the tabulated F-value, using 95% confidence interval,
# degrees of freedom of numerator=13, and degrees of freedom of
denominator=49 (read from console)
qf(0.95, 41, 199)
# If the computed F-value (i.e., var.test) > tabulated F-value, groups
are not homogeneous
#-----
# Two-sample Student's t-test (Edgell and Noon, 1984)
t.test(group1,group2, var.equal=TRUE, paired=FALSE)
# If p-value <0.05, averages of the two groups are significantly
dissimilar
# The best way to check our results is by looking at the tabulated
t-value
# To get the tabulated t-value, using 97.5% confidence interval,
degree of freedom = 62 (read from console)
qt(0.975, 240)
# If computed t-value > tabulated t-value, groups are dissimilar
#-----

```

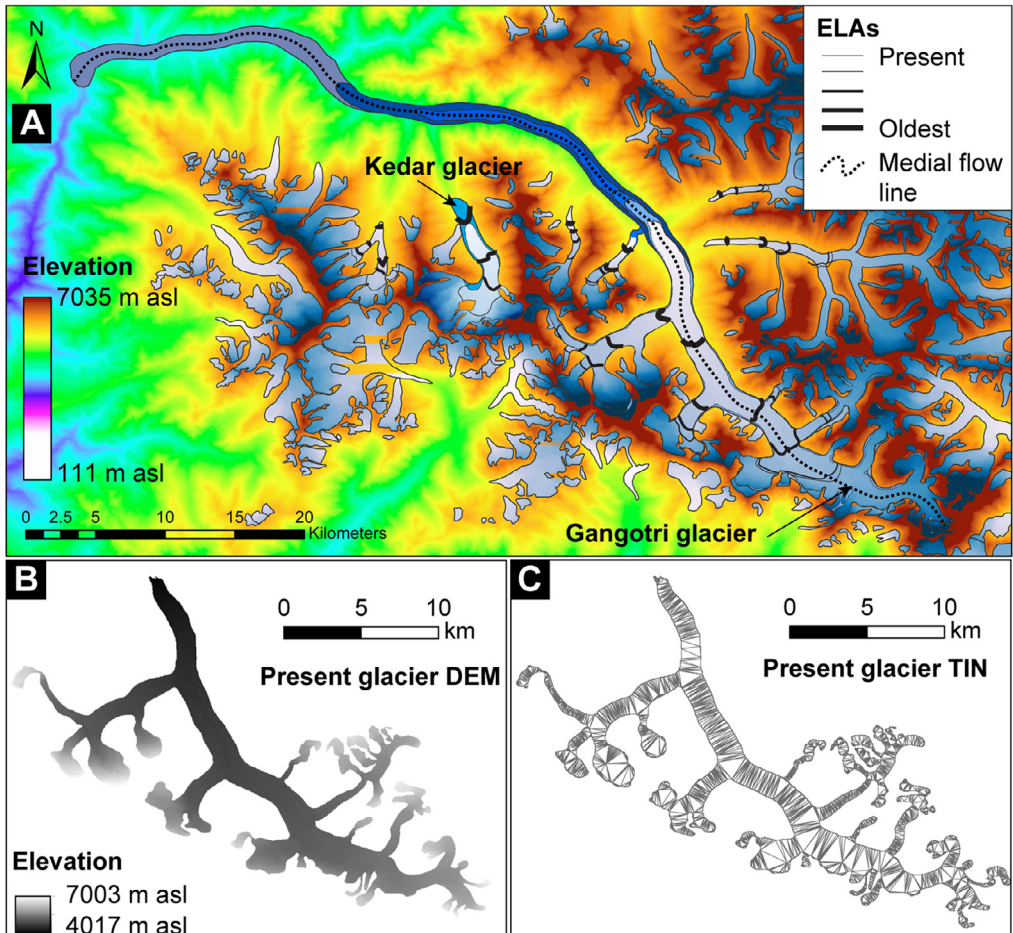


Fig. 6. An example of mapped glaciated areas (superimposed on the digital elevation model) of Gangotri glacier in the Bhagirathi valley, India, are shown for estimating equilibrium-line altitudes (ELAs). (A) Glaciated areas are mapped from Google Earth and Landsat ETM+ images and displayed from present to the oldest preserved glacier advance. ELAs for each glacier are shown in solid black lines; the thickness of the ELA lines varies from youngest to the oldest. The medial glacier flow length is measured along the dotted black line for each local glacier stage/advance. (B) An example of the extracted DEM of the present glacier using the mapped area (polygon). (C) An example of the converted triangular irregular networks (TIN) of the present glacier from the extracted DEM.

Morphometric models

Equilibrium-line altitudes (ELAs) and glacier hypsometry

Osmaston [29] detailed the steps to estimate ELAs using area-altitude (AA), area accumulation ratio (AAR), and toe-headwall accumulation ratio (THAR) methods. Choosing the correct ratios (or a combination) for AAR and THAR are dependent primarily, among other things, on the topography, size of the glacier, and microclimate [30]. Saha et al. [3], e.g., obtained AAR and THAR ratios from literature for each climatic group (see Section 3.3 in Saha et al. [3] for details).

We mapped present and past glaciated areas from Google Earth and Landsat ETM+ images in ArcGIS 10.5 (Fig. 6A; see also supplementary file S3) [31]. Those maps (vector layers) were used

to extract Advanced Spaceborne Thermal Emission and Reflection Radiometer (ASTER) global DEMs using the 'Extract by Mask' tool in ArcGIS 10.5 (Fig. 6B). Extracted (raster) DEMs were converted into ASCII files to aid the subsequent steps. The raster DEMs were also converted into triangular irregular networks ('TIN' in ArcGIS) layers to calculate the 3D surfaces of glaciers (Fig. 6C). Glaciated surface areas were estimated using the TIN layer and 'Interpolate Polygon to Multipatch' tool in ArcGIS. We also generated glacier's hypsometry [32] using the previously generated ASCII file (see supplementary Fig. S5 in Saha et al. [3]). The Read ArcGrid program developed by Professor David Nash of the University of Cincinnati was used to generate the glacier's hypsometry. The Read ArcGrid program is a simple java program that calculates the Elevation Relief Ratio (hypsometric integral) for a matrix of elevations using Pike and Wilson's method [32]. The hypsometric integral data and glaciated surface area can be directly copied and pasted into the ELAs excel file (highlighted in yellow in the supplementary Table S4). The excel file (Table S4 ELA calculation table) is prepared using the steps and recommendations of Osmaston [29].

The linear inverse glacier flow model

We reconstructed paleotemperature changes relative to present from the linear change in glacier length using the first-order glacier dynamics model of Oerlemans [33,34] for each glacier. Since this simple linear inverse glacier flow model requires a limited number of variables, it is easy to reconstruct for a wide range of Central Asian glaciers. For example, the essential model variables are: present glacier (medial) length (L_0 in m), past (medial) lengths (L in m) based on the maximum extent of preserved moraines in the valley (Fig. 6A), mean slope of the glacier surface (s in%), present mean annual precipitation (P in m/year), time of moraine formation (t in a or year), and age uncertainties (e in a or year). Since the linear flow model considers climate sensitivity (c) and response time (τ) of the glacier to estimate the lag time, we argue that the model is a decent approximation for widely different climatic regions throughout the orogen.

Climate sensitivity (c) is calculated as $c = 2.3P^{0.6}s^{-1}$ (x) and response time (τ) as $\tau = 13.6\beta^{-1}s^{-1}(1 + 20s)^{-1/2}L^{-1/2}$ (xi)

Here, P is the annual climatological precipitation in m a^{-1} , s is the mean surface slope of the glacier in percent, L is the present glacier length in m calculated along the medial flow line of the glacier (Fig. 6A), and β is the altitudinal mass-balance gradient, which is defined as $\beta = 0.006P^{1/2}$ [33,34]. Note that these formulas and constants are obtained by calibrating a simple model of glacier dynamics against globally distributed glacier records [33]. We are unable to calibrate the constants for our study areas due to the lack of detailed (proxy or instrumental) long-term glacier length change and climatological data in the higher reaches. However, we argue that the (globally calibrated) inverse linear flow model is a simple first-order representation of the glacier length change with a corresponding change in temperature (T), given the climate sensitivity and the response time (i.e., the lag time) of the glacier. Since we have averaged our reconstructed T regionally and have also provided $\pm 30\%$ change in P , given the large uncertainty in P during the Holocene over the orogen, we argue that the changing pattern of reconstructed T is useful for our understanding, if not exact. We have derived s and P for each glacier from the ASTER GDEM and the TRMM gridded cells, respectively. The model assumes a steady-state scenario and a larger influence of ambient temperature (in K) in modulating the equilibrium glacier length on a continental scale [33,34]. The following is a MATLAB code of the linear inverse glacier flow model modified after Oerlemans [33,34].

```

clc
close all
%%-----
% A linear inverse glacier flow-line model
% Reference: Oerlemans, 2001, pp-83-92 and Oerlemans, 2005
%%-----
% Basic parameters of the glacier (needs to change for every new
glacier)
% Present (reference) length of the glacier (m); manually input these
data

```

```

L0= 1751;% need to change every time for new glacier
s= 0.45;% mean slope of the glacier (calculated using ArcGIS) in
percent
P= 1.988;% climatological mean annual precipitation in m/year
% Basic data (dL & t) must be arranged from older to younger
dL=[9803, 8004, 7570, 3254, 3002, 1005, 505, 0];%length change from L0
in m
t=[10,032, 7900, 6055, 3423, 2450, 1036, 259, 0];% time parameter in
years
e=[304, 204, 200, 128, 78, 90, 22, 0];% Error in ages (year)
%%-----
% Constant parameters
n=0.006;% relates the mean glacier thickness to the glacier length
u=2.3;% constant used in climate sensitivity
a=0.6;% constant used in climate sensitivity
b=13.6;% constant used in response time
y=20;% constant used in response time
beta= n*(P.^0.5); % annual mass balance gradient (m/ year)
%%-----
% Llinear interpolation of dL
dt=10;
t_fine=1:dt:max(t);
dL_fine=interp1(t,dL,t_fine);%linear interpolation-- works better
%%-----
% Since the data is not smooth, we need to smooth the data using %
Butterworth
[bb,aa]=butter(1,1500/10,000,'low');%low pass (must change and see how
%%it behaves with higher and lower values
dL_smooth=filter(bb,aa,dL_fine);
%%-----
% To calculate dLdt: First step
% calculating dL difference per dt
dL_prime=diff(dL_smooth);%compute the difference in length
% MY WACKY FIX of the boundary condition (adding 0 in the 1st column)
dL_prime_ref=dL_prime;
dL_max=length(dL_smooth);
for c=2:dL_max
dL_prime(1,c)=dL_prime_ref(1,c-1);
end
dL_prime(1,1)=0;
%%-----
% To calculate dLdt: Second step
% Now calcuting the required dL/dt, that is in m/year
dLdt=dL_prime/dt;
%%-----
% Calculating change in temperature (in K) from glacier length
% Let's loop it
% dt=10;
for tm= 1:dt:max(t) % time loop
% calculating climate sensitivity (km/k)
c= u*P.^a/s;
% calculating glacier response time (year)

```

```

res_t= b./beta./s*(1+y*s)^-0.5*L0^-0.5; % calculating response time
% calculating change in temperature as a function of glacier geometry
T=-(1/c)*(dL_smooth+(res_t.*dLdt));
T=T/100;% had to introduce this value.
% plotting the data
figure(1)
% plotting the change in glacier length over time (m)
subplot(211);
yyaxis left
plot(t_fine,dL_fine,'-', 'MarkerEdgeColor','g');
hold on
plot(t_fine,dL_smooth, '--', 'MarkerEdgeColor','r');
ylabel('Relative difference in length (m)')
hold on
yyaxis right
plot(t_fine, dLdt, '--', 'MarkerEdgeColor','k')
grid on
ylabel('dLdt (m/a)')
xlabel('Time (years)')
title('Linear Inverse Glacier Flow Model')
hold off
% plotting the change in temperature over time (k)
subplot(2,1,2)
plot(t_fine, T, '--', 'MarkerEdgeColor', 'r', 'LineWidth', 2),
grid on
xlabel('Time (years)')
ylabel('Temperature (k)')
title('Reconstructed Temperature graph')
end % end of the time loop
%%-----
% Calculating mean and standard deviations for each Local glacial
advance
% Creating a matrix of interpolated time and calculated temp. change
data=[t_fine;T];
dtm=10;% generally 10 because our dt=10
% now for the first age group
t1=(t(1,1)-e(1,1));
t2=max(t);
data1=data(:,((t1/dtm)+1):((t2/dtm)));
Mean1= mean(data1(2,:));
STD1=std(data1(2,:));
yneg=STD1;
ypos=STD1;
xneg=e(1,1);
xpos=0;
hold on
errorbar(max(t),Mean1,yneg,ypos,xneg,xpos)
plot(data1(1,:),data1(2,:), 'r', 'LineWidth', 2)
%for second age group
t3=(t(1,2)-e(1,2));
t4=(t(1,2)+e(1,2));

```

```

data2=data(:,((t3/dtm)+1):((t4/dtm)+1));
Mean2= mean(data2(2,:));
STD2=std(data2(2,:));
yneg=STD2;
ypos=STD2;
xneg=e(1,2);
xpos=e(1,2);
hold on
errorbar((t(1,2)),Mean2,yneg,ypos,xneg,xpos)
plot(data2(1,:),data2(2,:), 'r','LineWidth', 2)
%for third age group
t5=(t(1,3)-e(1,3));
t6=(t(1,3)+e(1,3));
data3=data(:,((t5/dtm)+1):((t6/dtm)+1));
Mean3= mean(data3(2,:));
STD3=std(data3(2,:));
yneg=STD3;
ypos=STD3;
xneg=e(1,3);
xpos=e(1,3);
hold on
errorbar((t(1,3)),Mean3,yneg,ypos,xneg,xpos)
plot(data3(1,:),data3(2,:), 'r','LineWidth', 2)
%for fourth age group
t7=(t(1,4)-e(1,4));
t8=(t(1,4)+e(1,4));
data4=data(:,((t7/dtm)+1):((t8/dtm)+1));
Mean4= mean(data4(2,:));
STD4=std(data4(2,:));
yneg=STD4;
ypos=STD4;
xneg=e(1,4);
xpos=e(1,4);
hold on
errorbar((t(1,4)),Mean4,yneg,ypos,xneg,xpos)
plot(data4(1,:),data4(2,:), 'r','LineWidth', 2)
%for fifth age group
t9=(t(1,5)-e(1,5));
t10=(t(1,5)+e(1,5));
data5=data(:,((t9/dtm)+1):((t10/dtm)+1));
Mean5= mean(data5(2,:));
STD5=std(data5(2,:));
yneg=STD5;
ypos=STD5;
xneg=e(1,5);
xpos=e(1,5);
hold on
errorbar((t(1,5)),Mean5,yneg,ypos,xneg,xpos)
plot(data5(1,:),data5(2,:), 'r','LineWidth', 2)
%for sixth age group

```

```

t11=(t(1,6)-e(1,6));
t12=(t(1,6)+e(1,6));
data6=data(:,((t11/dtm)+1):((t12/dtm)+1));
Mean6= mean(data6(2,:));
STD6=std(data6(2,:));
yneg=STD6;
ypos=STD6;
xneg=e(1,6);
xpos=e(1,6);
hold on
errorbar((t(1,6)),Mean6,yneg,ypos,xneg,xpos)
plot(data6(1,:),data6(2,:), 'r','LineWidth', 2)
%for seventh age group
t13=(t(1,7)-e(1,7));
t14=(t(1,7)+e(1,7));
data7=data(:,((t13/dtm)+1):((t14/dtm)+1));
Mean7= mean(data7(2,:));
STD7=std(data7(2,:));
yneg=STD7;
ypos=STD7;
xneg=e(1,7);
xpos=e(1,7);
hold on
errorbar((t(1,7)),Mean7,yneg,ypos,xneg,xpos)
plot(data7(1,:),data7(2,:), 'r','LineWidth', 2)
%for eighth age group
t15=(t(1,8)-e(1,8));
t16=(t(1,8)+e(1,8));
data8=data(:,((t15/dtm)+1):((t16/dtm)+1));
Mean8= mean(data8(2,:));
STD8=std(data8(2,:));
yneg=STD8;
ypos=STD8;
xneg=e(1,8);
xpos=e(1,8);
hold on
errorbar((t(1,8)),Mean8,yneg,ypos,xneg,xpos)
plot(data8(1,:),data8(2,:), 'r','LineWidth', 2)
%for ninth age group
t17=(t(1,9)-e(1,9));
t18=(t(1,9)+e(1,9));
data9=data(:,((t17/dtm)+1):((t18/dtm)+1));
Mean9= mean(data9(2,:));
STD9=std(data9(2,:));
yneg=STD9;
ypos=STD9;
xneg=e(1,9);
xpos=e(1,9);
hold on
errorbar((t(1,9)),Mean9,yneg,ypos,xneg,xpos)

```

```

plot(data9(1,:),data9(2,:), 'r','LineWidth', 2)
%for tenth age group
t19=(t(1,10)-e(1,10));
t20=(t(1,10)+e(1,10));
data10=data(:,((t19/dtm)+1):((t20/dtm)+1));
Mean10= mean(data10(2,:));
STD10=std(data10(2,:));
yneg=STD10;
ypos=STD10;
xneg=e(1,10);
xpos=e(1,10);
hold on
errorbar((t(1,10)),Mean10,yneg,ypos,xneg,xpos)
plot(data10(1,:),data10(2,:), 'r','LineWidth', 2)
%for eleventh age group
t21=(t(1,11)-e(1,11));
t22=(t(1,11)+e(1,11));
data11=data(:,((t21/dtm)+1):((t22/dtm)+1));
Mean11= mean(data11(2,:));
STD11=std(data11(2,:));
yneg=STD11;
ypos=STD11;
xneg=e(1,11);
xpos=e(1,11);
hold on
errorbar((t(1,11)),Mean11,yneg,ypos,xneg,xpos)
plot(data11(1,:),data11(2,:), 'r','LineWidth', 2)
%for twelveth age group
t23=(t(1,12)-e(1,12));
t24=(t(1,12)+e(1,12));
data12=data(:,((t23/dtm)+1):((t24/dtm)+1));
Mean12= mean(data12(2,:));
STD12=std(data12(2,:));
yneg=STD12;
ypos=STD12;
xneg=e(1,12);
xpos=e(1,12);
hold on
errorbar((t(1,12)),Mean12,yneg,ypos,xneg,xpos)
plot(data12(1,:),data12(2,:), 'r','LineWidth', 2)
%for thirteenth age group
t25=(t(1,13)-e(1,13));
t26=(t(1,13)+e(1,13));
data13=data(:,((t25/dtm)+1):((t26/dtm)+1));
Mean13= mean(data13(2,:));
STD13=std(data13(2,:));
yneg=STD13;
ypos=STD13;
xneg=e(1,13);
xpos=e(1,13);

```



```

hold on
errorbar((t(1,13)),Mean13,yneg,ypos,xneg,xpos)
plot(data13(1,:),data13(2,:), 'r','LineWidth', 2)
%Ignore the warning message at the end
%%-----
%Save the data as matrix [mean Temp. (K) column; SD column]
All_data=[Mean13,STD13;Mean2,STD2;Mean3,STD3;Mean4,STD4;...
Mean5,STD5;Mean6,STD6;Mean7,STD7;Mean8,STD8;Mean9,STD9;...
Mean10,STD10;Mean11,STD11;Mean12,STD12;Mean1,STD1;];

```

Acknowledgments

We thank the anonymous reviewer for reviewing our work and providing constructive comments to improve the quality of the manuscript. The current project was funded by the SEED grant of PRIME laboratory, Purdue University, to AMS measure ^{10}Be samples. SS, LAO, and ENO thank the Department of Geology at the University of Cincinnati for fieldwork support. SS acknowledges support from the Geological Society of America for Graduate Student Research Grant and the Graduate Student Governance Association of the University of Cincinnati for Research Fellowship to conduct fieldwork. Statistical computation is done using the supercomputer facility of the Ohio Supercomputer Center (OSC, 1987; <https://www.osc.edu/>). SS also thanks to Dr. Patrick Applegate for his constructive comments on the liner flow model and Dr. Jason Dortch for providing the MATLAB code for their probability density function.

Declaration of Competing Interest

The authors declare that there are no conflicts of interest.

Supplementary materials

Supplementary material associated with this article can be found, in the online version, at doi: [10.1016/j.mex.2020.100820](https://doi.org/10.1016/j.mex.2020.100820).

References

- [1] L.A. Owen, Quaternary glaciation of the Himalaya and adjacent mountains, in: A.P. Dimri, B. Bookhagen, M. Stoffel, T. Yasunari (Eds.), *Himalayan Weather and Climate and Their Impact On the Environment*, Springer, Dordrecht, 2020.
- [2] J.M. Dortch, L.A. Owen, M.W. Caffee, Timing and climatic drivers for glaciation across semi-arid western Himalayan-Tibetan orogen, *Quat. Sci. Rev.* 78 (2013) 188–208.
- [3] S. Saha, L.A. Owen, E.N. Orr, M.W. Caffee, High-frequency Holocene glacier fluctuations in the Himalayan-Tibetan orogen, *Quaternary Science Reviews*. (2019).
- [4] S. Saha, L.A. Owen, E.N. Orr, M.W. Caffee, Timing and nature of Holocene glacier advances at the northwestern end of the Himalayan-Tibetan orogen, *Q. Sci. Rev.* 187 (2018) 177–202.
- [5] M. New, D. Lister, M. Hulme, I. Makin, A high-resolution data set of surface climate over global land areas, *Clim. Res.* 21 (2002) 1–25.
- [6] K. Fujita, Effect of precipitation seasonality on climatic sensitivity of glacier mass balance, *Earth Planet. Sci. Lett.* 276 (2008) 14–19.
- [7] S. Pascale, V. Lucarini, X. Feng, A. Porporato, S. ul Hasson, Analysis of rainfall seasonality from observations and climate models, *Clim. Dyn.* (2014) 3281–3301.
- [8] L.A.I. Zuming, H. Maohuan, A numerical classification of glaciers in China by means of glaciological indices at the equilibrium line, in: *Snow Cover Glacier Var. (Proceedings Balt. Symp. Maryland)*, 1989, pp. 103–111.
- [9] E.A. Sagredo, T.V. Lowell, Climatology of andean glaciers: a framework to understand glacier response to climate change, *Glob. Planet. Change* 86–87 (2012) 101–109.
- [10] R Core Team, 2018. R : a language and environment for statistical computing. Vienna, Austria. ISBN 3-900051-07-0.
- [11] Romesburg, C., 2004. Cluster analysis for researchers. North Carolina, p. 330.
- [12] R. Seaby, P. Henderson, *Community Analysis Package 5.0: Searching for Structure in Community Data*, PISCES Conserv. Ltd., Engl, 2014, p. 186.
- [13] K.R. Clarke, Non-parametric multivariate analysis of changes in community structure, *Aust. J. Ecol.* 18 (1993) 117–143.
- [14] M.K. Murari, L.A. Owen, J.M. Dortch, M.W. Caffee, C. Dietsch, M. Fuchs, W.C. Haneberg, M.C. Sharma, A. Townsend-Small, Timing and climatic drivers for glaciation across monsoon-influenced regions of the Himalayan-Tibetan orogen, *Quat. Sci. Rev.* 88 (2014) 159–182.

- [15] Ohio Supercomputer Center, Ohio Supercomputer Center, Ohio Supercomputer Center, Columbus OH, 1987 <http://osc.edu/ark:/19495/f5s1ph73>.
- [16] A. Astel, S. Tsakovski, P. Barbieri, V. Simeonov, Comparison of self-organizing maps classification approach with cluster and principal components analysis for large environmental data sets, *Water Res* 41 (2007) 4566–4578.
- [17] P.J. Applegate, N.M. Urban, B.J.C. Laabs, K. Keller, R.B. Alley, Modelling the statistical distributions of cosmogenic exposure dates from moraines, *Geosci. Model Dev.* 3 (2010) 293–307.
- [18] P.J. Applegate, N.M. Urban, K. Keller, T.V. Lowell, B.J.C. Laabs, M.A. Kelly, R.B. Alley, Improved moraine age interpretations through explicit matching of geomorphic process models to cosmogenic nuclide measurements from single landforms, *Quat. Res.* 77 (2012) 293–304.
- [19] J.R. Taylor, *An Introduction to Error Analysis*, 2nd, University Science Books, Sausalito, Calif, 1997.
- [20] M.A. Kelly, T.V. Lowell, B.L. Hall, J.M. Schaefer, R.C. Finkel, B.M. Goehring, R.B. Alley, G.H. Denton, A ^{10}Be chronology of lateglacial and Holocene mountain glaciation in the Scoresby Sund region, east Greenland: implications for seasonality during lateglacial time, *Quat. Sci. Rev.* 27 (2008) 2273–2282.
- [21] A.E. Putnam, J.M. Schaefer, G.H. Denton, D.J.A. Barrell, B.G. Andersen, T.N.B. Koffman, A.V. Rowan, R.C. Finkel, D.H. Rood, R. Schwartz, M.J. Vandergoes, M.A. Plummer, S.H. Brocklehurst, S.E. Kelley, K.L. Ladig, Warming and glacier recession in the Rakaia valley, Southern Alps of New Zealand, during Heinrich Stadial 1, *Earth Planet. Sci. Lett.* 382 (2013) 98–110.
- [22] C. Leys, C. Ley, O. Klein, P. Bernard, L. Licata, Detecting outliers: do not use standard deviation around the mean, use absolute deviation around the median, *J. Exp. Soc. Psychol.* 49 (2013) 764–766.
- [23] R.S. Jones, D. Small, N. Cahill, M.J. Bentley, P.L. Whitehouse, iceTEA: tools for plotting and analysing cosmogenic-nuclide surface-exposure data from former ice margins, *Quat. Geochronol.* 51 (2019) 72–86.
- [24] Y.B. Seong, L.A. Owen, M.P. Bishop, A. Bush, P. Clendon, L. Copland, R. Finkel, U. Kamp, J.F. Shroder, Quaternary glacial history of the Central Karakoram, *Quat. Sci. Rev.* 26 (2007) 3384–3405.
- [25] R. Galbraith, R. Roberts, G. Laslett, H. Yoshida, J. Olley, Optical dating of single and multiple grains of quartz from Jinmium rock shelter, Northern Australia: part I, experimental design and statistical models, *Archaeometry* 41 (1999) 339–364.
- [26] M. Dietze, S. Kreutzer, et al., `plot_AbanicoPlot()`: function to create an Abanico Plot. Function version 0.1.10, in: S. Kreutzer, C. Burrow, M. Dietze, M.C. Fuchs, C. Schmidt, M. Fischer, et al. (Eds.), (2018). *Luminescence: Comprehensive Luminescence Dating Data Analysis*. R package Version 0.8.6, 2018 <https://CRAN.R-project.org/package=Luminescence>.
- [27] C. Burrow, et al., `calc_FiniteMixture()`: apply the finite mixture model (FMM) after Galbraith (2005) to a given de distribution. Function version 0.4, in: S. Kreutzer, C. Burrow, M. Dietze, M.C. Fuchs, C. Schmidt, M. Fischer, et al. (Eds.), (2018). *Luminescence: Comprehensive Luminescence Dating Data Analysis*. R package Version 0.8.6, 2018 <https://CRAN.R-project.org/package=Luminescence>.
- [28] S.E. Edgell, S.M. Noon, Effect of violation of normality on the t-test of the correlation coefficient, *Psychol. Bull.* 95 (3) (1984) 576–583 <http://dx.doi.org/10.1037/0033-2909.95.3.576>.
- [29] H. Osmaston, Estimates of glacier equilibrium line altitudes by the area x altitude, the area x altitude balance ratio and the area x altitude balance index methods and their validation, *Quat. Int.* 138–139 (2005) 22–31.
- [30] D.I. Benn, L.A. Owen, H.A. Osmaston, G.O. Seltzer, S.C. Porter, B. Mark, Reconstruction of equilibrium-line altitudes for tropical and sub-tropical glaciers, *Quat. Int.* 138–139 (2005) 8–21.
- [31] S. Saha, L.A. Owen, E.N. Orr, M.W. Caffee, Cosmogenic ^{10}Be and equilibrium-line altitude dataset of Holocene glacier advances in the Himalayan-Tibetan orogen, *Data in Brief*. (2019).
- [32] R.J. Pike, S.E. Wilson, Elevation-relief ratio, hypsometric integral, and geomorphic area-altitude analysis, *Geol. Soc. Am. Bull.* 82 (4) (1971) 1079–1084.
- [33] J. Oerlemans, *Glaciers and Climate Change*, Swets and Zeitlinger, Lisse, Netherlands, 2001, p. 160.
- [34] J. Oerlemans, Extracting a climate signal from 169 glacier records, *Science* 308 (2005) 675–677.