



Identification of significant immune-related genes for epilepsy via bioinformatics analysis

Xiaodan Luo, Tao Xiang, Hongmi Huang, Lin Ye, Yifei Huang, Yuan Wu

Department of Neurology, The First Affiliated Hospital of Guangxi Medical University, Nanning, China

Contributions: (I) Conception and design: X Luo, T Xiang; (II) Administrative support: H Huang, L Ye; (III) Provision of study materials or patients: X Luo, T Xiang; (IV) Collection and assembly of data: X Luo, T Xiang; (V) Data analysis and interpretation: Y Wu; (VI) Manuscript writing: All authors; (VII) Final approval of manuscript: All authors.

Correspondence to: Yuan Wu. Department of Neurology, The First Affiliated Hospital of Guangxi Medical University, 6 Shuangyong Road, Nanning 530000, China. Email: wuyuan90@126.com.

Background: Epilepsy is one of the most common neurological disorders, but its underlying mechanism has remained obscure, and the role of immune-related genes (IRGs) in epilepsy have not yet been investigated. Therefore, in this study, we explored the association between IRGs and epilepsy.

Methods: An IRG list was collected from the ImmPort database. The gene expression profiles of GSE143272 were collected from the Gene Expression Omnibus (GEO) database (<https://www.ncbi.nlm.nih.gov/geo/>). Differentially expressed genes (DEGs) between epilepsy and normal samples were analyzed, and the intersections between IRGs and DEGs were identified using the VennDiagram package, with the intersected genes subjected to further analysis. Enrichment function for intersected genes were performed, constructed a protein-protein interaction (PPI) network via the Search Tool for the Retrieval of Interacting Genes/Proteins (STRING) database, and the hub genes (top 10) of the PPI network were calculated by the cytoHubba plug-in in Cytoscape. The top correlated genes were selected to perform correlation analysis with immune cells infiltration and expression levels. Finally, we performed validation of the top correlated genes transcriptional expression levels using an animal model.

Results: There were a total of 245 DEGs detected in GSE143272, among which 143 were upregulated and 102 downregulated genes in epilepsy. A total of 44 differential IRGs were obtained via intersection of DEGs and IRGs. Enrichment function analysis of DEGs showed that they played a significant role in immune response. The gene *CXCL1* was the most correlated with other differentially expressed IRGs via the PPI network. The results of immune cell infiltration analysis indicated that epilepsy patients had higher activated mast cells infiltration ($P=0.021$), but lower activated CD4 memory T cells ($P=0.001$), resting CD4 memory T cells ($P=0.011$), and gamma delta T cells ($P=0.038$) infiltration. It was revealed that *CXCL1* and activated mast cells ($R=0.25$, $P=0.019$) and neutrophils ($R=0.3$, $P=0.0043$), and a negative correlation with T cells gamma delta ($R=-0.25$, $P=0.018$). The levels of *CXCL1* expression were significantly lower in epilepsy patients than those in normal samples.

Conclusions: In this study, the results showed that IRGs such as *CXCL1* have a significant influence on epilepsy via regulation of immune cells infiltration.

Keywords: Epilepsy; immune-related genes (IRGs); *CXCL1*

Submitted May 17, 2021. Accepted for publication Jul 22, 2021.

doi: 10.21037/atm-21-2792

View this article at: <https://dx.doi.org/10.21037/atm-21-2792>

Introduction

According to the World Health Organization (WHO), epilepsy is the one of the most common neurological disorders. It is characterized by emotional and cognitive dysfunction, and about 70 million people are affected by this neurological disorder worldwide (1). Despite the widespread use of antiepileptic drugs (AEDs), about one-third of epilepsy patients do not respond to AEDs (2). Therefore, it is an urgent need to develop novel safe and effective therapeutic regimens for epilepsy. It has been shown that AEDs stop seizures but do not influence the underlying pathology or inhibit the progression of neurological disorders (3). Further understanding of the underlying mechanisms of epilepsy may foster the development of novel treatment regimens that not only block, but also effect the progression, of seizures.

To date, increasing studies have provided significant evidence to confirm that inflammation plays an essential role in epilepsy (4,5). Anti-inflammatory agents such as steroids and other drugs have been shown to be useful in the treatment of some drug-resistant epilepsy patients (6), supporting the theory that inflammation one of the pathogenic influences in epilepsy. Further, when seizures occur, it has been shown that pro-inflammatory agents coincidentally increase (7). Inflammation is always accompanied by changes in the immune system. Chronic brain inflammation has been detected in patients with Rasmussen's encephalitis, and several cell types such as microglia, astrocytes, endothelial cells of the blood-brain barrier (BBB), and immune cells are involved in this process (8). Several studies have shown that immune system is overly activated in some patients with seizure disorders, furthering the high incidence of seizures in autoimmune disease patients, and it has also been found that limbic encephalitis can act as cause of epilepsy (9,10). These evidences strongly support that immune activation and inflammation play key roles in several types of epilepsy. On this basis, an immune-modulating and anti-inflammatory therapeutic regimen may be effective in treating some forms of epilepsy. Regrettably, the research has mainly focused on epilepsy immune cells and immune-related genes (IRGs) have not yet been identified. Herein, it is a pressing need to identify the significant immune cells and IRGs that have essential roles in epilepsy. In the present study, we used bioinformatics to analyze the significant IRGs, and then explore the relationship between IRGs and immune cell infiltration in relation to epilepsy.

We present the following article in accordance with the ARRIVE reporting checklist (available at <https://dx.doi.org/10.21037/atm-21-2792>).

<https://dx.doi.org/10.21037/atm-21-2792>).

Methods

Data collection

The IRG list was collected from the ImmPort database (<https://www.immport.org>). The gene expression profiles of GSE143272 with 91 epilepsy samples (blood) and 51 normal samples (blood) were collected from the Gene Expression Omnibus (GEO) database (<https://www.ncbi.nlm.nih.gov/geo/>). The study was conducted in accordance with the Declaration of Helsinki (as revised in 2013).

Difference analysis of IRGs in epilepsy

The gene differences analysis was performed (epilepsy VS normal) via `wilcox.test` in R software (<https://www.r-project.org/>), and the filtering standards were set as $|\log_2FC| > 0.3$ and P value < 0.05 . The `ggplot2` package in R software was used to plot the heatmap and volcano of differentially expressed genes (DEGs). The intersection of DEGs and IRGs was carried out using the `VennDiagram` package, and the differential IRGs were used for subsequent analysis.

Functional enrichment analysis of immune-related differential genes

The potential functional enrichment of immune-related differential genes in epilepsy was explored using the R software with the aid of the `clusterProfiler` and `ggplot2` packages. A q value < 0.05 was considered as significant enrichment functions.

Construction of protein-protein interaction (PPI) network

We used the differential immune related genes to construct a PPI network through the Search Tool for the Retrieval of Interacting Genes/Proteins (STRING) database, and the hub genes (top 10) of the PPI network were calculated using the `cytoHubba` plug-in in Cytoscape software (version 3.8.1; <https://cytoscape.org>).

Analysis of immune cells infiltration in epilepsy and normal samples

The CIBERSORT algorithm can characterize cell composition based on gene expression profiles, thus

estimating the relative abundance of 22 immune cells. We used the CIBERSORT algorithm to calculate the abundance of immune cells in 91 epilepsy samples and 51 normal samples and explore the differential expression between them. Furthermore, we also investigated the correlation between the expression of the PPI network's hub gene and 22 immune cells.

Pentylenetetrazole-induced chronic epilepsy model

Male specific pathogen-free (SPF) Sprague Dawley (SD) rats were provided by the Experimental Animal Center of Guangxi Medical University. Animals were habituated for 7 days under controlled standard conditions of temperature, humidity and lighting conditions (12-12 light-dark schedule with light on 8AM) before experiment. Animals had food and water freely.

A total of 40 rats (body weight 200–250 g, aged 8–10 weeks) were randomly divided into 2 groups: control group and chronic epilepsy group, with 20 rats in each group. If any rats died during the modeling process, they were replenished to the number of 20 in each group. According to the experimental method of Tchekalarova *et al.* (11), the rats were administered an intraperitoneal injection of 1% pentylenetetrazol (PTZ; Sigma-Aldrich, St. Louis, MO, USA) at a dose of 40 mg/kg for 28 days in succession at 8:00 am to 10:00 am every second day. Consecutive seizures of 3 times of grade IV or above were considered to be completely ignited (12). Following, PTZ was injected intraperitoneally once a day to maintain the ignition effect and establish the rat model of chronic epilepsy. Control group animals were intraperitoneally injected with normal saline once at the same time for 28 consecutive days. The dose of PTZ was calculated according to body weight before injection. Rats were carefully observed for 30 min after each administration of PTZ, and the seizure degree was recorded. Racine classification criteria were used as follows (13): (I) chew or facial movements; (II) nodding regularly; (III) unilateral or bilateral forelimb clonus; (IV) bilateral forelimb clonus and rearing; and (V) generalized convulsions, falling and rearing. The minimum sample size of experimental animals was calculated by using statistical methods based on the pre-experimental data, so as to reduce the number of animals under the condition of ensuring the comparability of experimental data. A protocol was prepared before the study without registration. Experiments were performed under a project license (No.: 202101003) granted by The First Affiliated Hospital of Guangxi Medical University ethics

board, in compliance with Chinese guidelines for the care and use of animals.

RNA extraction and reverse transcription polymerase chain reaction

The RNA isolation agent NucleoZOL 740404.6 (Macherey-Nagel GmbH & Co.KG., Düren, Germany) was used to extract Total RNA, which was then dissolved in 20 μ L RNase-free water.

Using spectrophotometry to examine the purity and concentration of the RNA extracts, RNA purity was confirmed using a cutoff value of 1.8–2.0 (Abs 260 nm/Abs 280 nm).

The PrimeScriptTM RT Master Mix (RR036A, Takara Bio., Kusatsu, Shiga, Japan) was used to synthesize the circular DNA (cDNA). The reverse transcription reaction system, incorporating 4 μ L 5 \times PrimeScript RT Master Mix, 1,000 ng extracted total RNA, and RNase-free distilled H₂O was added to the final volume to 20 μ L. The reverse transcription reaction conditions were as follows: 37 °C for 15 min followed by 2 min at 85 °C. After the reaction, the cDNA was stored at –20 °C.

A FastStart Universal SYBR Green Master (4913914001, RoX Health GmbH, Berlin, Germany) was used for real-time quantitative PCR. The reaction system was as follows: 5 μ L 2 \times SYBR Green Master mix, 1 μ L cDNA, 0.6 μ L primer (forward and reverse, 10 μ M), and RNase-free double distilled (dd)H₂O to reach the final volume of 10 μ L. The primer sequences of *CXCL1* and β -actin (14) were shown as follows:

CXCL1 Forward primer ACCCAAACCGAAGTCATAGCE
Reverse primer: GGGACACCCTTTAGCATCTT
 β -actin Forward primer: ACCGCGAGAAGATGACCCAG
Reverse primer: GGATAGCACAGCCTGGATAGCAA

A 7500 fast thermocycler was used to perform the RT-PCR, and the reaction conditions were as follows: 10 min at 95 °C, followed by 40 cycles of 15 s at 95 °C and 1 min at 60 °C. Each gene was analyzed by RT-PCR in triplicate. The gene expression of *CXCL1* was normalized to β -actin, and a $\Delta\Delta$ Ct method was used for the quantification of target gene expression.

Statistical analysis

The differences were analyzed via the Wilcoxon test method, and the correlation was analyzed via Spearman's correlation. The RT-PCR data was analyzed as mean \pm standard deviation (mean \pm SD) and analyzed with SPSS 26.0 (SPSS Inc., USA). The *t*-test was used to analysis the difference

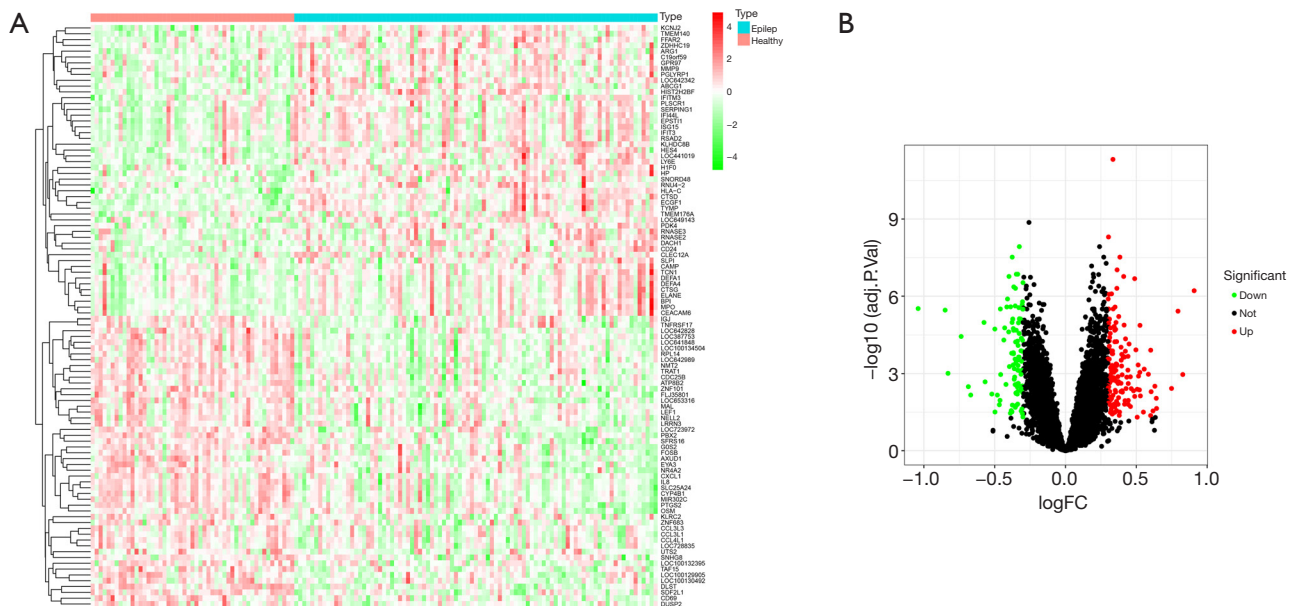


Figure 1 Extraction of immune-related DEGs in epilepsy. Heatmap plot (A) and Volcano (B) plot of DEGs. Green and red represent down-regulated and up-regulated genes, respectively. DEGs, differentially expressed genes.

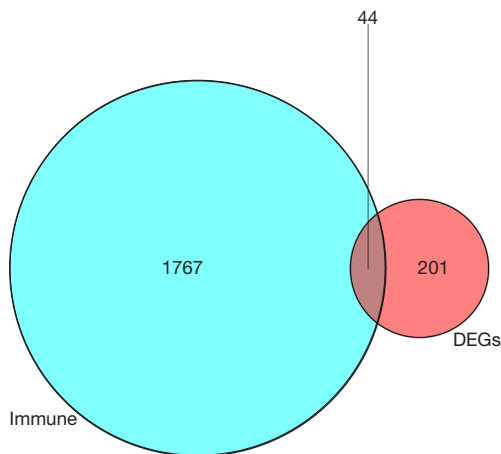


Figure 2 Intersecting genes of DEGs and IRGs. Red and cyan represent DEGs and immune related genes, respectively. DEGs, differentially expressed genes; IRGs, immune related genes.

which there were 143 upregulated and 102 downregulated genes in epilepsy (Figure 1A,B). There were 1,811 IRGs in the ImmPort database, and 44 differential IRGs were obtained via intersection of DEGs and IRGs (Figure 2).

Enrichment function analysis of immune related DEGs

The results of immune related DEGs function analysis showed that the biological processes (BP) of these genes mainly participate in neutrophil degranulation, neutrophil activation involved in immune response, neutrophil-mediated immunity, neutrophil activation, and defense response to bacterium. For cellular components (CC), DEGs may play the key role if secretory granule lumen and cytoplasmic vesicle lumen. According to molecular function (MF), immune related DEGs have a critical role in chemokine receptor binding, chemokine activity, major histocompatibility complex (MHC) protein complex binding, and so on (Figure 3A,B). The pathway of immune related DEGs analysis showed that they are parts of several important pathways such as the NF-kappa B signaling pathway, viral protein interaction with cytokine and cytokine receptor, human cytomegalovirus infection, programmed death-ligand 1 (PD-L1) expression and PD-1 checkpoint pathway in cancer, antigen processing and presentation, and cytokine-cytokine receptor interaction

between the control and chronic epilepsy groups. A P value <0.05 was considered statistically significant.

Results

Extraction of immune-related DEGs in epilepsy

There were a total of 245 DEGs in the GSE143272, among

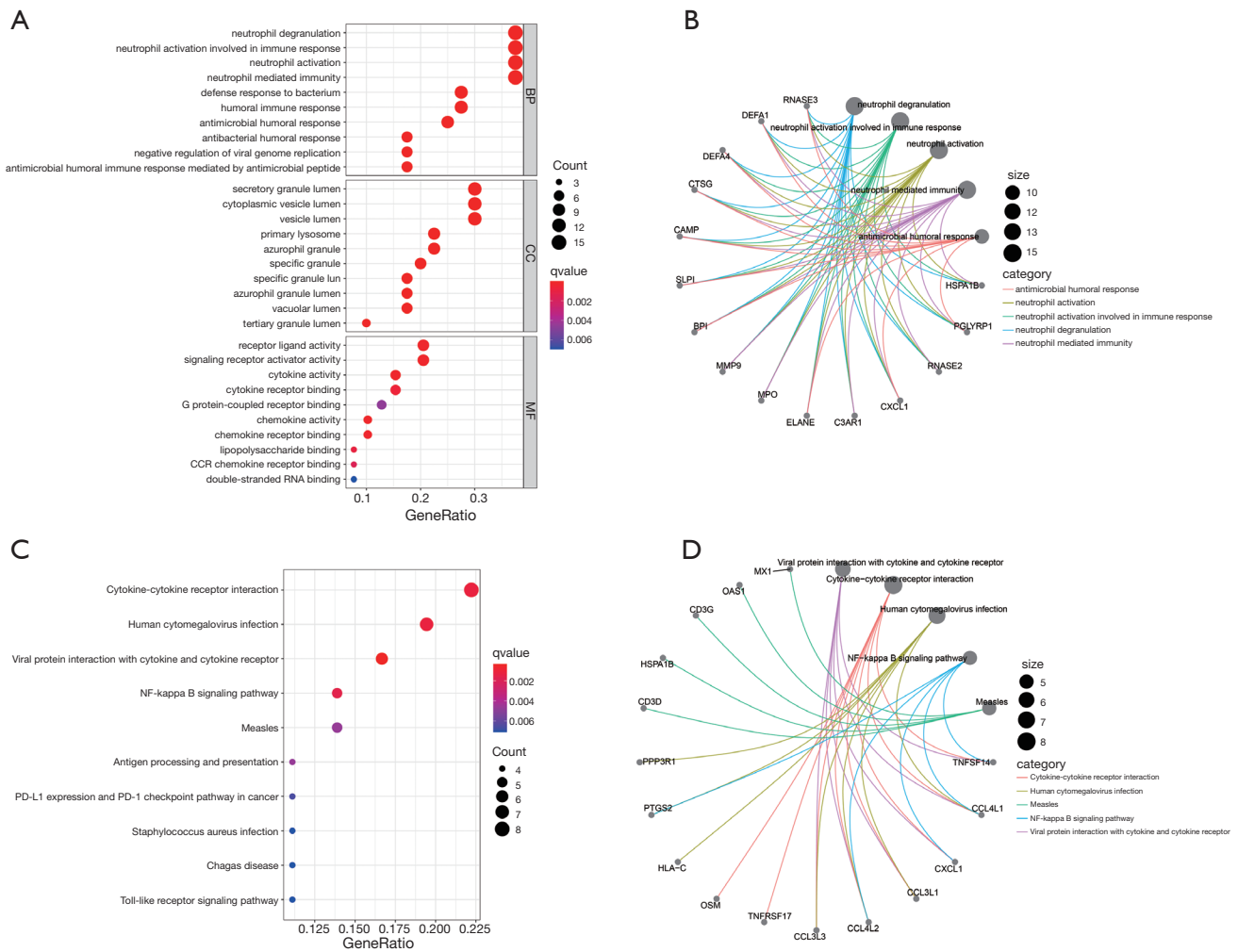


Figure 3 The enrichment functions of the immune related DEGs. The bubble diagram (A) and circos diagram (B) of GO enrichment functions. The bubble diagram (C) and circos diagram (D) of KEGG pathways. Red and blue dots represent q value, the radius size of dots represent the genes count. GO, Gene Ontology; KEGG, Kyoto Encyclopedia of Genes and Genomes; DEGs, differentially expressed genes.

(Figure 3C,D). From these findings, we can deduce that inflammation and immune response are important in the pathogenesis of epilepsy.

Construction of the PPI network

To explore the relation of immune related DEGs, we used the STRING database to construct a PPI network, and the top 10 interacted genes were used for further analysis. The results showed that the top 10 interacted genes included *CXCL1*, *ELANE*, *MPO*, *BPI*, *CAMP*, *DEFA4*, *CTSG*, *MMP9*, *SLPI*, and *HLA-C*; among them, *CXCL1* is the most interactive immune related DEG (Figure 4A,B). These

results further confirmed that inflammation and immune response play important roles in the pathological process of epilepsy.

Analysis of immune cell infiltration

Further, we used the CIBERSORT algorithm to investigate the abundance of immune cell in individual samples (Figure 5A). The relationship results of various immune cells indicated that neutrophils inhibited gamma delta T cells, CD8 T cells, activated CD4 memory T cells, and monocytes, but positively regulated M0 macrophages; gamma delta T cells positively regulated T cells CD8 and

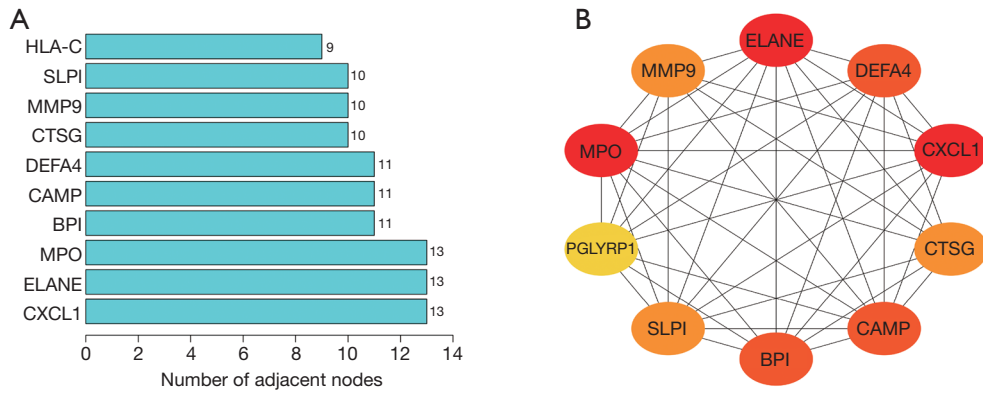


Figure 4 PPI network of immune related DEGs in epilepsy. Histogram of number of adjacent nodes of the top 10 genes in the PPI network (A). The protein-protein interaction network of the top 10 genes (B). The redder the color, the more adjacent nodes number of genes. PPI, protein-protein interaction; DEGs, differentially expressed genes.

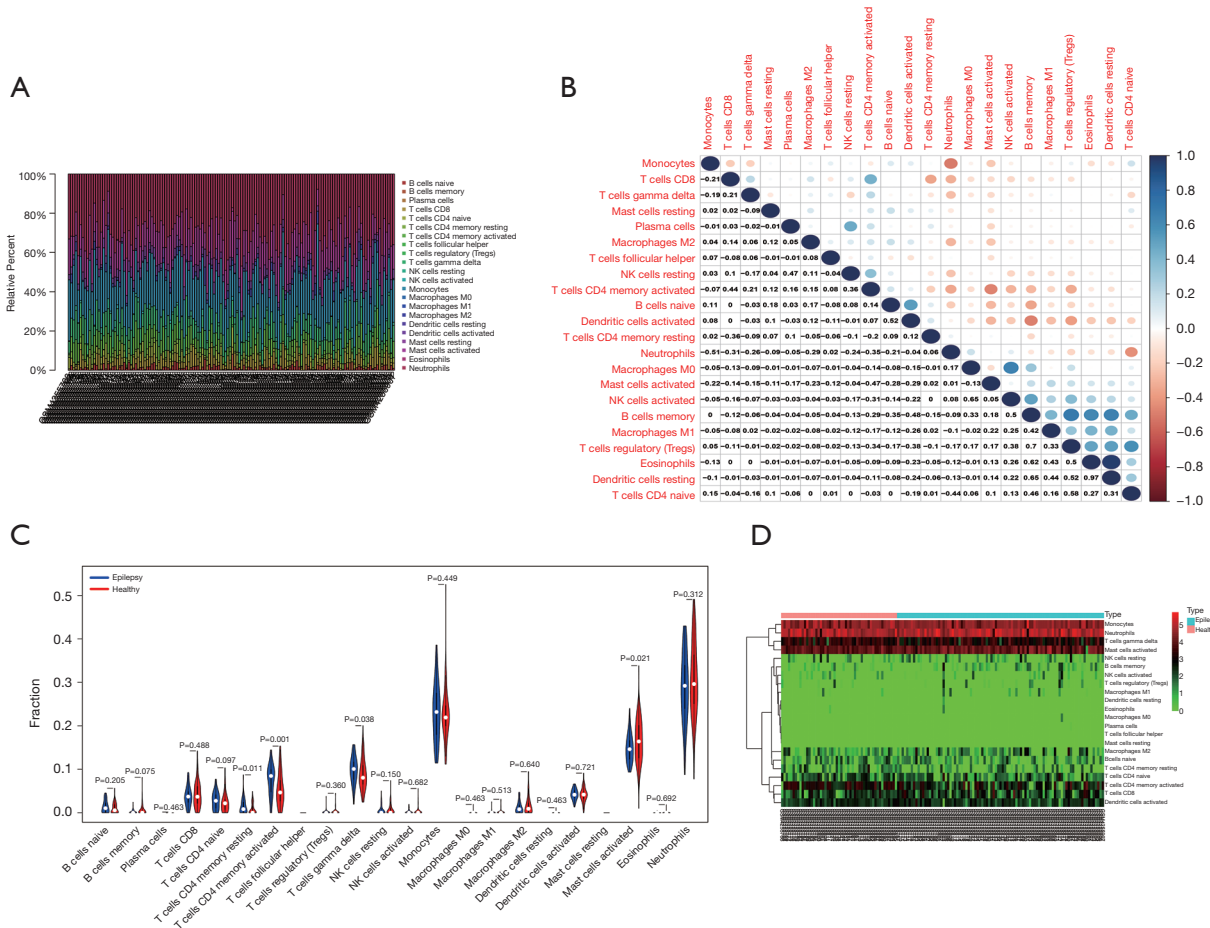


Figure 5 Immune infiltrating cells analysis. Histogram of the abundance of 22 immune cells (A). Heatmap plot of the correlation between 22 immune cells, blue and red represent positive and negative correlations, respectively (B). Violin plot the abundance of 22 immune cells in epilepsy and normal samples, X-axis represents 22 kinds of immune cells, Y-axis represents relative abundance of immune cells (C). The heatmap of the abundance of 22 immune cells in epilepsy and normal samples. Red and green represent high and low infiltration of immune cells, respectively (D).

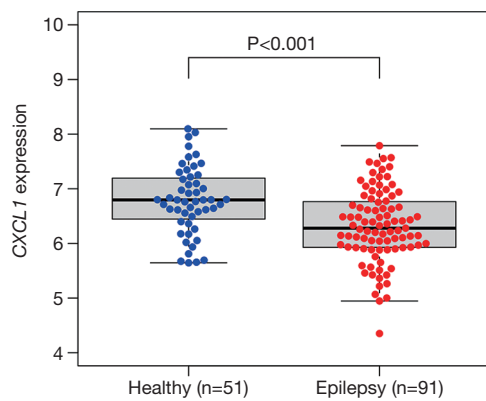


Figure 6 The expression level of *CXCL1* between epilepsy and normal samples. *CXCL1*, C-X-C motif chemokine ligand 1.

activated CD4 memory T cells, but negatively regulated monocytes, resting natural killer (NK) cells, activated mast cells, neutrophils, and so on (Figure 5B). The results also showed that epilepsy patients with higher activated mast cells infiltration ($P=0.021$), but lower activated CD4 memory T cells ($P=0.001$), resting CD4 memory T cells ($P=0.011$), and gamma delta T cells ($P=0.038$) infiltration (Figure 5C,D). These results revealed the association of different immune cells.

Expression level of *CXCL1*

The gene *CXCL1* was the hub gene in the PPI network, so we explored its expression level between the epilepsy and normal samples. The results showed that *CXCL1* was lowly expressed in epilepsy patients ($P<0.001$) (Figure 6).

The association between *CXCL1* and immune cell infiltration

The results of correlation analysis indicated that there was a positive correlation between *CXCL1* and activated mast cells ($R=0.25$, $P=0.019$) and neutrophils ($R=0.3$, $P=0.0043$), and a negative correlation with gamma delta T cells ($R=-0.25$, $P=0.018$) (Figure 7).

Behavioral observation

A total of 4 rats died during persistent generalized tonic clonic seizure (on days 5, 9, 18, and 21 of continuous intraperitoneal injection of PTZ). A total of 17 PTZ-treated rats developed consecutive seizures of 3 times of

grade IV or above for 16–24 days. Additionally, 3 rats did not reach the ignition standard after 28 days of continuous intraperitoneal PTZ injection.

Validation of *CXCL1* messenger RNA expression

Our results indicated the significant downregulation of *CXCL1* messenger RNA (mRNA) in a chronic epilepsy model (control: 0.9898 ± 0.07736 ; epilepsy: 0.7072 ± 0.07319 , $P<0.001$) (Figure 8).

Discussion

Through better understanding of the underlying mechanisms of epilepsy, it has become apparent that the immune system plays a significant role in the development of seizures. Vezzani *et al.* revealed the key role of cytokines in epilepsy (15). Further, activation of the innate immune system and inflammation can have a deep influence on the development of seizures (16). Based on these factors, we conducted this study to identify the significant differentially expressed IRGs between epilepsy and normal samples, and explored the biological functions and expression levels, further using PCR to validate the genes expression levels.

The raw data was downloaded from GSE143272; among a total of 245 DEGs, there were 143 upregulated and 102 downregulated genes in epilepsy, and there were 1,811 IRGs in the ImmPort database. Finally, we obtained 44 differential IRGs via intersection of DEGs and IRGs. The enrichment function results showed that these DEGs are involved in different immune response processes such as neutrophil degranulation, neutrophil activation involved in immune response, neutrophil mediated immunity, neutrophil activation, chemokine receptor binding, chemokine activity, MHC protein complex binding, viral protein interaction with cytokine and cytokine receptor, and cytokine-cytokine receptor interaction. We then selected IRGs via the PPI network, and detected 10 genes, including *CXCL1*, *ELANE*, *MPO*, *BPI*, *CAMP*, *DEFA4*, *CTSG*, *MMP9*, *SLPI*, and *HLA-C*, and the *CXCL1* gene was selected for further analysis. Finally, we explored the immune cells abundance of individual samples and the relationship between *CXCL1* and immune cell infiltrations.

Over the past decades, the inflammatory and immune responses have been suspected of participating in one of the potential underlying mechanisms for epilepsy (17,18), and intravenous immune globulin has subsequently been used in the treatment of intractable childhood epilepsy. Immune

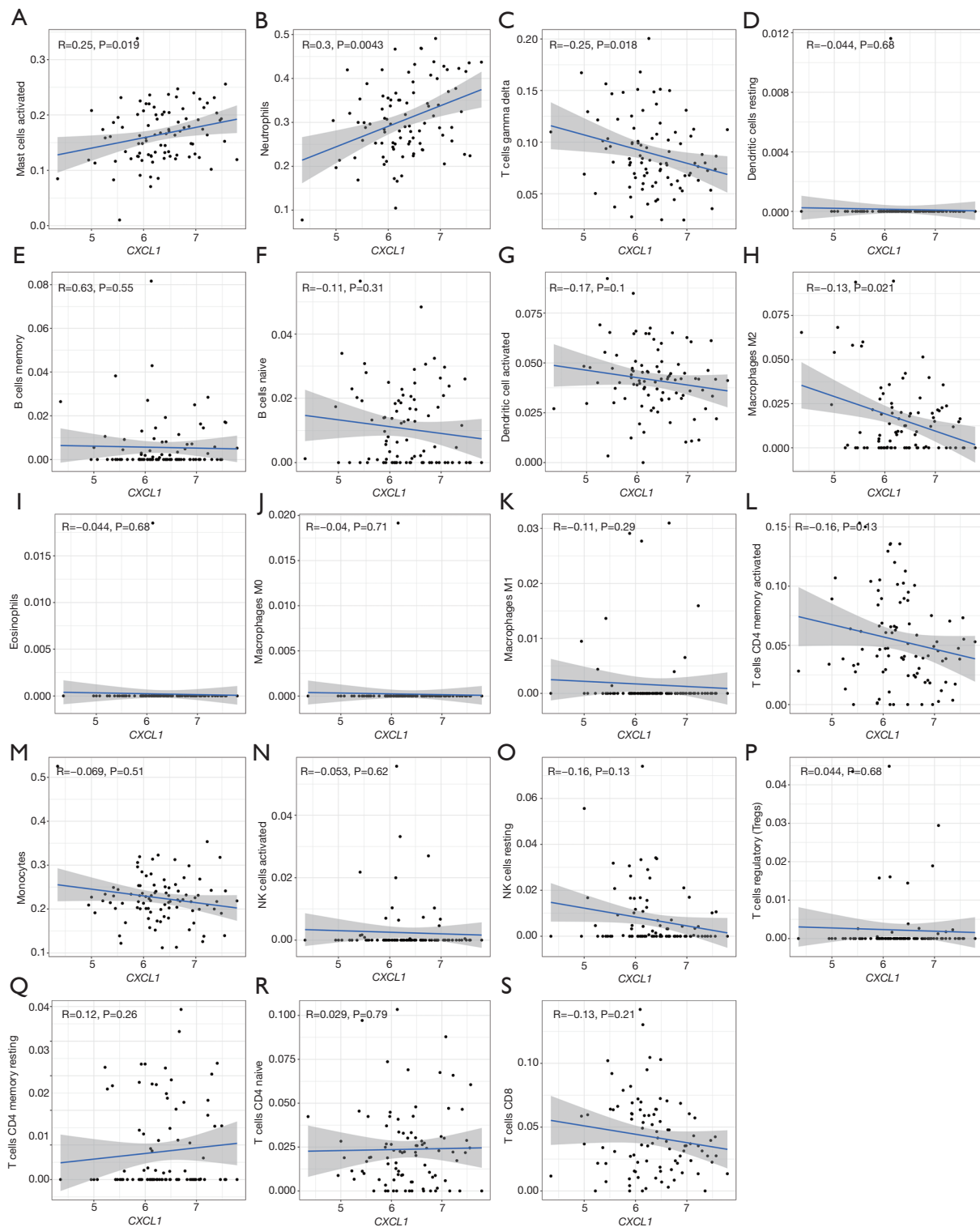


Figure 7 Relationship between *CXCL1* and immune cells in epilepsy. Activated mast cells (A) and neutrophils (B), gamma delta T cells (C), resting dendritic cells (D), memory B cells (E), naïve B cells (F), activated dendritic cells (G), M2 macrophages (H), eosinophils (I), M0 macrophages (J), M1 macrophages (K), activated CD4 memory T cells (L), monocytes (M), activated NK cells (N), resting NK cells (O), regulatory T cells (P), resting CD4 memory T cells (Q), naïve CD4 T cells (R), CD8 T cells (S). *CXCL1*, C-X-C motif chemokine ligand 1.

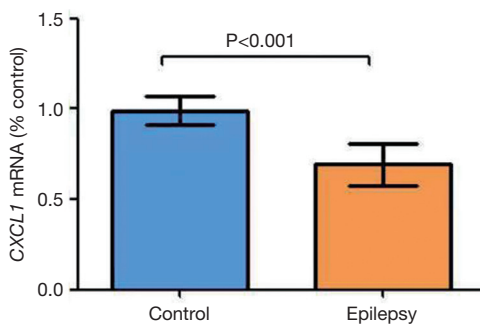


Figure 8 The validation of mRNA transcriptional levels via rat models. mRNA, messenger RNA.

cells are one of main components of the immune system, and IRGs may influence immune cell infiltration and signaling pathway transduction to affect the development of seizures. Regrettably, few studies have investigated the association between immune cells and epilepsy. The *MMP9* gene has been shown to promote inflammation and the development of seizures (19-22), and a relationship has been identified between *HLA* and epilepsy (23-26). Furthermore, *CXCL1* has an association with epilepsy (27); however, the actual roles of *HLA-C* and *CXCL1* in epilepsy have remained obscure. Therefore, the relationship between these IRGs and epilepsy has required further investigation. Via the regulation of immune cells infiltration, IRGs may significantly influence the pathophysiology of epilepsy. Herein, we investigated the difference between immune cells infiltration of epilepsy samples and normal samples. The results showed that epilepsy patients with higher activated mast cells, but lower activated CD4 memory T cells, resting CD4 memory T cells, and gamma delta T cells infiltration. Kilinc *et al.* indicated that mast cells may ameliorate the development of seizures (28); however, there have been few studies investigating the role of T cells in epilepsy. Since only *CXCL1*, *MMP9*, and *HLA-C* have been shown to have relationships with epilepsy, we explored the expression levels of these genes and their association with immune cells infiltration. The results showed that epilepsy patients had significantly higher expression levels of *HLA-C* and *MMP9*. It was revealed that *HLA-C* was positively correlated with neutrophils but negatively correlated with naïve CD4 T cells. It was also shown that *MMP9* was positively correlated with neutrophils, activated mast cells, M2 macrophages infiltration, but inhibited CD8 T cells, naïve CD4 T cells, activated CD4 memory T cells, monocytes, activated dendritic cells, and naïve B cells

infiltration. Based on these associations, IRGs may have a profound influence on epilepsy via regulation of immune cell infiltration and regulating inflammation. However, the role of these immune cells in epilepsy is still unclear. Thus, further investigation of the underlying mechanism of these immune cells in epilepsy urgently needed, which may facilitate finding a novel treatment or supplementary therapy regimens for epilepsy patients.

Conclusions

In present study, the results showed that IRGs such as *CXCL1*, *MMP9*, and *HLA-C* have a significant influence on epilepsy, and they may work via regulating immune cells infiltration. However, the underlying mechanism of some IRGs and immune cells for epilepsy has yet to be elucidated.

Acknowledgments

Funding: None.

Footnote

Reporting Checklist: The authors have completed the ARRIVE reporting checklist. Available at <https://dx.doi.org/10.21037/atm-21-2792>

Data Sharing Statement: Available at <https://dx.doi.org/10.21037/atm-21-2792>

Conflicts of Interest: All authors have completed the ICMJE uniform disclosure form (available at <https://dx.doi.org/10.21037/atm-21-2792>). The authors have no conflicts of interest to declare.

Ethical Statement: The authors are accountable for all aspects of the work in ensuring that questions related to the accuracy or integrity of any part of the work are appropriately investigated and resolved. The study was conducted in accordance with the Declaration of Helsinki (as revised in 2013). Experiments were performed under a project license (No.: 202101003) granted by The First Affiliated Hospital of Guangxi Medical University ethics board, in compliance with Chinese guidelines for the care and use of animals.

Open Access Statement: This is an Open Access article distributed in accordance with the Creative Commons

Attribution-NonCommercial-NoDerivs 4.0 International License (CC BY-NC-ND 4.0), which permits the non-commercial replication and distribution of the article with the strict proviso that no changes or edits are made and the original work is properly cited (including links to both the formal publication through the relevant DOI and the license). See: <https://creativecommons.org/licenses/by-nc-nd/4.0/>.

References

1. Thijs RD, Surges R, O'Brien TJ, et al. Epilepsy in adults. *Lancet* 2019;393:689-701.
2. Wang D, Wei P, Shan Y, et al. Optimized stereoelectroencephalography-guided radiofrequency thermocoagulation in the treatment of patients with focal epilepsy. *Ann Transl Med* 2020;8:15.
3. Pitkänen A, Sutula TP. Is epilepsy a progressive disorder? Prospects for new therapeutic approaches in temporal-lobe epilepsy. *Lancet Neurol* 2002;1:173-81.
4. Choi J, Nordli DR Jr, Alden TD, et al. Cellular injury and neuroinflammation in children with chronic intractable epilepsy. *J Neuroinflammation* 2009;6:38.
5. Riazi K, Galic MA, Pittman QJ. Contributions of peripheral inflammation to seizure susceptibility: cytokines and brain excitability. *Epilepsy Res* 2010;89:34-42.
6. Wheless JW, Clarke DF, Arzimanoglou A, et al. Treatment of pediatric epilepsy: European expert opinion, 2007. *Epileptic Disord* 2007;9:353-412.
7. Dinarello CA. Infection, fever, and exogenous and endogenous pyrogens: some concepts have changed. *J Endotoxin Res* 2004;10:201-22.
8. RASMUSSEN T, OLSZEWSKI J, LLOYDSMITH D. Focal seizures due to chronic localized encephalitis. *Neurology* 1958;8:435-45.
9. Vincent A, Bien CG. Anti-NMDA-receptor encephalitis: a cause of psychiatric, seizure, and movement disorders in young adults. *Lancet Neurol* 2008;7:1074-5.
10. Dalmau J, Gleichman AJ, Hughes EG, et al. Anti-NMDA-receptor encephalitis: case series and analysis of the effects of antibodies. *Lancet Neurol* 2008;7:1091-8.
11. Tchekalarova J, Sotiriou E, Angelatou F. Down-regulation of dopamine D1 and D2 receptors in the basal ganglia of PTZ kindling model of epilepsy: effects of angiotensin IV. *Brain Res* 2004;1024:159-66.
12. Hunot S, Vila M, Teismann P, et al. JNK-mediated induction of cyclooxygenase 2 is required for neurodegeneration in a mouse model of Parkinson's disease. *Proc Natl Acad Sci U S A* 2004;101:665-70.
13. Racine RJ. Modification of seizure activity by electrical stimulation. II. Motor seizure. *Electroencephalogr Clin Neurophysiol* 1972;32:281-94.
14. Lin W, Qin J, Ni G, et al. Downregulation of hyperpolarization-activated cyclic nucleotide-gated channels (HCN) in the hippocampus of patients with medial temporal lobe epilepsy and hippocampal sclerosis (MTLE-HS). *Hippocampus* 2020;30:1112-26.
15. Vezzani A, French J, Bartfai T, et al. The role of inflammation in epilepsy. *Nat Rev Neurol* 2011;7:31-40.
16. Vezzani A, Granata T. Brain inflammation in epilepsy: experimental and clinical evidence. *Epilepsia* 2005;46:1724-43.
17. Aronica E, Ravizza T, Zurolo E, et al. Astrocyte immune responses in epilepsy. *Glia* 2012;60:1258-68.
18. Walker L, Sills GJ. Inflammation and epilepsy: the foundations for a new therapeutic approach in epilepsy? *Epilepsy Curr* 2012;12:8-12.
19. Cai X, Long L, Zeng C, et al. LncRNA ILF3-AS1 mediated the occurrence of epilepsy through suppressing hippocampal miR-212 expression. *Aging (Albany NY)* 2020;12:8413-22.
20. Cudna A, Jopowicz A, Mierzejewski P, et al. Serum metalloproteinase 9 levels increase after generalized tonic-clonic seizures. *Epilepsy Res* 2017;129:33-6.
21. Nass RD, Wagner M, Surges R, et al. Time courses of HMGB1 and other inflammatory markers after generalized convulsive seizures. *Epilepsy Res* 2020;162:106301.
22. Rüber T, David B, Lüchters G, et al. Evidence for perictal blood-brain barrier dysfunction in patients with epilepsy. *Brain* 2018;141:2952-65.
23. Hu FY, Wang W, Ren JC, et al. Levetiracetam-induced cutaneous adverse drug reactions were not associated with HLA genes in a small sample of Chinese patients with epilepsy. *Epilepsy Res* 2016;124:12-5.
24. Iannetti P, Morellini M, Raucci U, et al. HLA antigens, epilepsy and cytomegalovirus infection. *Brain Dev* 1988;10:256-8.
25. Jain S, Padma MV, Kanga U, et al. Family studies and human leukocyte antigen class II typing in Indian probands with seizures in association with single small enhancing computed tomography lesions. *Epilepsia* 1999;40:232-8.
26. Zhao T, Li HJ, Wang TT, et al. Association between HLA genotype and antiseizure medications (ASMs)-induced maculopapular eruption among epilepsy patients in Xinjiang, China. *Epilepsy Res* 2020;165:106391.

27. Liu XX, Yang L, Shao LX, et al. Endothelial Cdk5 deficit leads to the development of spontaneous epilepsy through CXCL1/CXCR2-mediated reactive astrogliosis. *J Exp Med* 2020;217:e20180992.
28. Kilinc E, Torun IE, Cetinkaya A, et al. Mast cell activation

ameliorates pentylentetrazole-induced seizures in rats: The potential role for serotonin. *Eur J Neurosci* 2021. [Epub ahead of print]. doi: 10.1111/ejn.15145.

(English Language Editor: J. Jones)

Cite this article as: Luo X, Xiang T, Huang H, Ye L, Huang Y, Wu Y. Identification of significant immune-related genes for epilepsy via bioinformatics analysis. *Ann Transl Med* 2021;9(14):1161. doi: 10.21037/atm-21-2792