



# Dysentery Caused by *Balantidium coli* in China

Peixia Yu\*, JianRong Rong, Yan Zhang, Jingjing Du

Department of Clinical Laboratory Medicine, Shanxi Bethune Hospital & Shanxi Academy of Medical Sciences, Taiyuan, 030009, Shanxi, PR China

**Abstract:** *Balantidium coli* human infection predominantly occurs in tropical and subtropical regions in the world. Human case is extremely rare in China. This report details a case of *B. coli* infection in a 68-year-old man in China, who presented with history of abdominal pain, tenesmus, diarrhea with blood and was diagnosed as *B. coli*-caused dysentery. Our case indicates possible occurrence of *Balantidium coli*-related disease in cooler climates. This case is presented not only because of its rarity but also for future references.

**Key words:** *Balantidium coli*, dysentery, China

## INTRODUCTION

*Balantidium coli* is considered the largest protozoon and the only ciliated protozoon known to infect humans and nonhuman primates [1]. However, human infection with *B. coli* is uncommon despite its potential for worldwide distribution [1], which predominantly occurs in tropical and subtropical regions [2]. To our knowledge, only 18 single-case reports of human infections with *B. coli* have been found in English literature in limited countries from 2001 until now (Table 1). As for China, very few human *B. coli* infections have been detected and it is rarely seldom for Chinese clinicians or laboratory technicians to consider *B. coli* as a possible pathogen in patients with diarrhea or dysentery; however, here we report a case of intestinal balantidiasis in China, which indicates possible occurrence of *B. coli*-induced diseases in cooler climates.

## CASE DESCRIPTION

A 68-year-old man from Liulin County, Luliang City, Shanxi Province, North China (37°25'48.89" N, 110°53'21.73" E) was admitted to Emergency Department with complaints of a one-week history of abdominal pain, tenesmus, diarrhea with blood and mucus. He also reported a series of symptoms of

anorexia, nausea, vomiting, muscular weakness and weight loss. An epidemiological investigation revealed that he was employed as a pig farmer for 4 months.

Routine blood testing upon admission displayed mild anemia (hemoglobin 111 g/L, reference interval 130-175 g/L). Serum potassium (2.94 mmol/L, reference interval 3.5-5.3 mmol/L), sodium (133.6 mmol/L, reference interval 137-147 mmol/L) and chloride (98.0 mmol/L, reference interval 99-110 mmol/L) were all outside normal limits. Stool occult blood testing was positive. Unpreserved bloody and mucus-containing stool was submitted to the laboratory. Microscopic observation in wet preparation demonstrated 4+ red blood cells and 4+ white blood cells per high power field. Uniformly covered with short cilia, some large oval trophozoites (approximately 50 µm by 80 µm) exhibiting rapid rotary-type motion were captured (Fig. 1A). Two nuclei within the trophozoite were displayed in Wright-Giemsa stained smear, a smaller round micronucleus nestling against a larger kidney-shaped macronucleus (Fig. 1B).

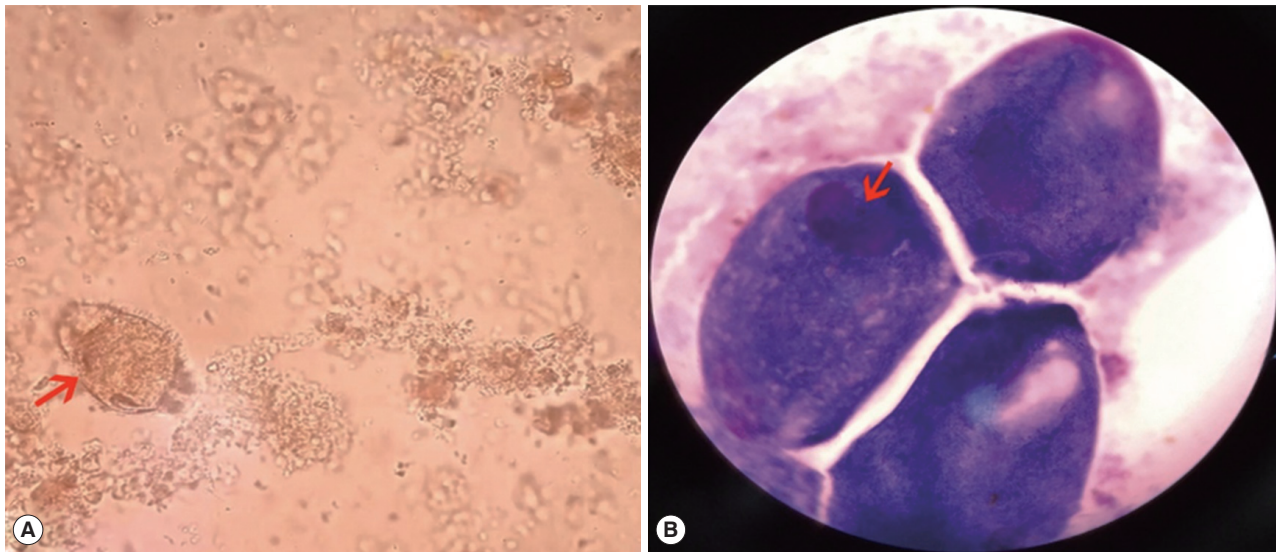
According to the result of morphological observation, the large active ciliated trophozoites were identified as *B. coli* easily. Combining clinical manifestations, diagnosis of dysentery caused by *B. coli* was soon established, which was further substantiated by the patient's experience of working as a pig farmer because swine serves as the most important reservoir host for human infection with *B. coli* [1]. Once diagnosis was clear, oral metronidazole therapy for 2-weeks (750 mg 3 times daily) was administered to the patient which resulted in a full recovery. There were no further recurrences of *B. coli* in stool after 6 months of follow-up.

•Received 11 December 2019, revised 6 February 2020, accepted 12 February 2020.

\*Corresponding author (627073207@qq.com)

© 2020, Korean Society for Parasitology and Tropical Medicine

This is an Open Access article distributed under the terms of the Creative Commons Attribution Non-Commercial License (<https://creativecommons.org/licenses/by-nc/4.0>) which permits unrestricted non-commercial use, distribution, and reproduction in any medium, provided the original work is properly cited.



**Fig. 1.** (A) Wet preparation demonstrating large trophozoite (arrow) ( $\times 400$ ). (B) Wright-Giemsa staining demonstrating macronucleus and micronucleus within trophozoite (Arrow) ( $\times 1,000$ ).

**Table 1.** Literature reports of human infections caused by *Balantidium coli* (since 2001)

Sex	Age	Country	Detected specimen	Year of publication	Reference
F	71	Greece	bronchial secretions	2003	[3]
M	32	Venezuela	stool	2003	[4]
M	42	Canada	bronchoalveolar lavage fluid	2003	[5]
F	58	Greece	bronchoalveolar lavage fluid	2003	[6]
F	47	Turkey	stool	2004	[7]
M	54	France	anatomic colon specimen	2004	[8]
F	29	India	urine	2007	[9]
M	20	South Africa	bronchial lavage fluid	2010	[10]
M	56	Italy	urine	2010	[11]
M	60	India	histological examination	2013	[12]
F	72	India	urine	2013	[13]
M	23	France	stool	2013	[14]
M	68	India	urine	2014	[15]
F	55	India	urine	2014	[16]
M	37	India	stool	2016	[17]
M	48	India	liver aspirate	2016	[2]
M	22	India	corneal scrapings, CL cleaning solution	2016	[18]
M	60	India	urine	2016	[19]

## DISCUSSION

The clinical manifestations of human infections with *B. coli* can range from mild asymptomatic cases to cases of severe dysentery, which can even progress to life-threatening consequences [1]. Theoretically, the symptoms of *B. coli*-induced colitis may be confused with amebic colitis, hence *B. coli* and *Entamoeba histolytica* should be considered within a differential diagnosis of parasitic diarrhea or dysentery [2], which is not

difficult, in fact, because of their different sizes and modes of motion. Meanwhile, many extraintestinal sites of *B. coli* disease have been reported, which can be seen from the results of cases review (Table 1). It is worth mentioning that it should be careful to differentiate between *B. coli* trophozoites and ciliated epithelial cells from pulmonary specimens [20].

The life cycle of *B. coli* consists of cysts or trophozoites. Trophozoites and cysts are both characterized by 2 nuclei. However, the micronucleus is usually not visible within the tropho-

zoite or cyst in both stained preparations and on wet mounts [20]. Surprisingly, the micronucleus in trophozoites was observed in Wright-Giemsa stained smear in our case. It is often difficult to distinguish motionless trophozoites from cysts. One important difference is that cilia are visible surrounding trophozoites but invisible in cysts form because cilia are contained within cysts wall [20].

Laboratory diagnosis of *B. coli*-induced infection is relatively easy because of rapid spiraling motility and large size of trophozoites. Routine stool examinations, particularly wet-preparation examinations of fresh stools are of practical significance and permanent stained smear is not strictly necessary because *B. coli* are so large that they tend to stain very darkly, which is not conducive to observe the ciliate and internal structure. Some clearer images of trophozoite in Wright-Giemsa stained smear were lucky to be captured in this case.

In conclusions, the present case is a rare report of human infection caused by *B. coli* in China, which imply the likelihood of development of *B. coli*-induced human infections in cooler climates. The cases review since 2001 provides valuable data for the framework of human infections in *B. coli* worldwide.

## ACKNOWLEDGEMENT

We would like to thank Yuan Yao, Associate Professor in Shandong Medical College, for his help in identifying the parasite.

## CONFLICT OF INTEREST

The authors declare that there is no conflict of interest.

## REFERENCES

- Schuster FL, Ramirez-Avila L. Current world status of *Balantidium coli*. Clin Microbiol Rev 2008; 21: 626-638.
- Kapur P, Das AK, Kapur PR, Dudeja M. *Balantidium Coli* liver abscess: first case report from India. J Parasit Dis 2016; 40: 138-140.
- Vasilakopoulou A, Dimarongona K, Samakovli A, Papadimitris K, Avlami A. *Balantidium coli* pneumonia in an immunocompromised patient. Scand J Infect Dis 2003; 35: 144-146.
- Cermeno JR, Hernandez De Cuesta I, Uzcategui O, Páez J, Rivera M, Baliachi N. *Balantidium coli* in an HIV-infected patient with chronic diarrhoea. AIDS 2003; 17: 941-942.
- Sharma S, Harding G. Necrotizing lung infection caused by the protozoan *Balantidium coli*. Can J Infect Dis 2003; 14: 163-166.
- Anargyrou K, Petrikkos GL, Suller MT, Skiada A, Siakantaris MP, Osuntuyinbo RT, Pangalis G, Vaiopoulos G. Pulmonary *Balantidium coli* infection in a leukemic patient. Am J Hematol 2003; 73: 180-183.
- Yazar S, Altuntas F, Sahin I, Atambay M. Dysentery caused by *Balantidium coli* in a patient with non-Hodgkin's lymphoma from Turkey. World J Gastroenterol 2004; 10: 458-459.
- Ferry T, Bouhour D, De Monbrison F, Laurent F, Dumouchel-Champagne H, Picot S, Piens MA, Granier P. Severe peritonitis due to *Balantidium coli* acquired in France. Eur J Clin Microbiol Infect Dis 2004; 23: 393-395.
- Umesh S. *Balantidium coli* on urine microscopy. Natl Med J India 2007; 20: 270.
- Koopowitz A, Smith P, van Rensburg N, Rudman A. *Balantidium coli*-induced pulmonary haemorrhage with iron deficiency. S Afr Med J 2010; 100: 534-536.
- Maino A, Garigali G, Grande R, Messa P, Fogazzi GB. Urinary balantidiasis: diagnosis at a glance by urine sediment examination. J Nephrol 2010; 23: 732-737.
- Dhawan S, Jain D, Mehta VS. *Balantidium coli*: an unrecognized cause of vertebral osteomyelitis and myelopathy. J Neurosurg Spine 2013; 18: 310-313.
- Bandyopadhyay A, Majumder K, Goswami BK. *Balantidium coli* in urine sediment: report of a rare case presenting with hematuria. J Parasit Dis 2013; 37: 283-285.
- Bellanger AP, Scherer E, Cazorla A, Grenouillet F. Dysenteric syndrome due to *Balantidium coli*: a case report. New Microbiol 2013; 36: 203-205.
- Karuna T, Khadanga S. A rare case of urinary balantidiasis in an elderly renal failure patient. Trop Parasitol 2014; 4: 47-49.
- Khanduri A, Chauhan S, Chandola I, Mahawal B, Kataria V. Balantidiosis: a rare accidental finding in the urine of a patient with acute renal failure. J Clin Diagn Res 2014; 8: DD03-DD04.
- Kumar M, Rajkumari N, Mandal J, Parija SC. A case report of an uncommon parasitic infection of human balantidiasis. Trop Parasitol 2016; 6: 82-84.
- Hazarika M, Pai HV, Khanna V, Reddy H, Tilak K, Chawla K. Rare case of polymicrobial keratitis with *Balantidium coli*. Cornea 2016; 35:1665-1667.
- Kaur S, Gupta A. Urinary balantidiasis: A rare incidental finding in a patient with chronic obstructive pulmonary disease. J Cytol 2016; 33: 169-171.
- Lynne S. Garcia. Diagnostic Medical Parasitology. 6th ed. Washington, USA. John Wiley & Sons. 2016; pp 605-608.

