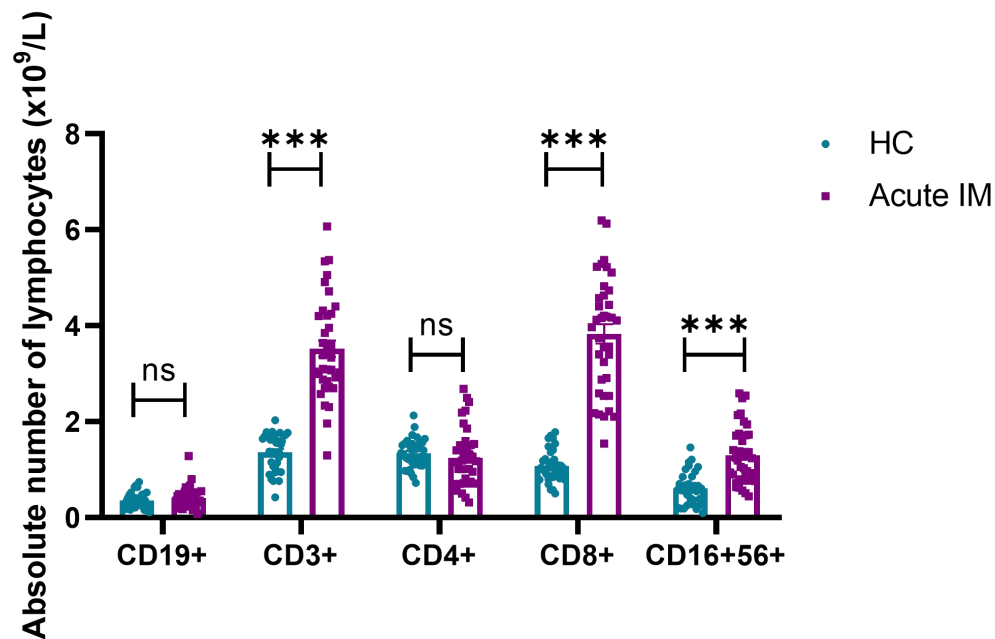
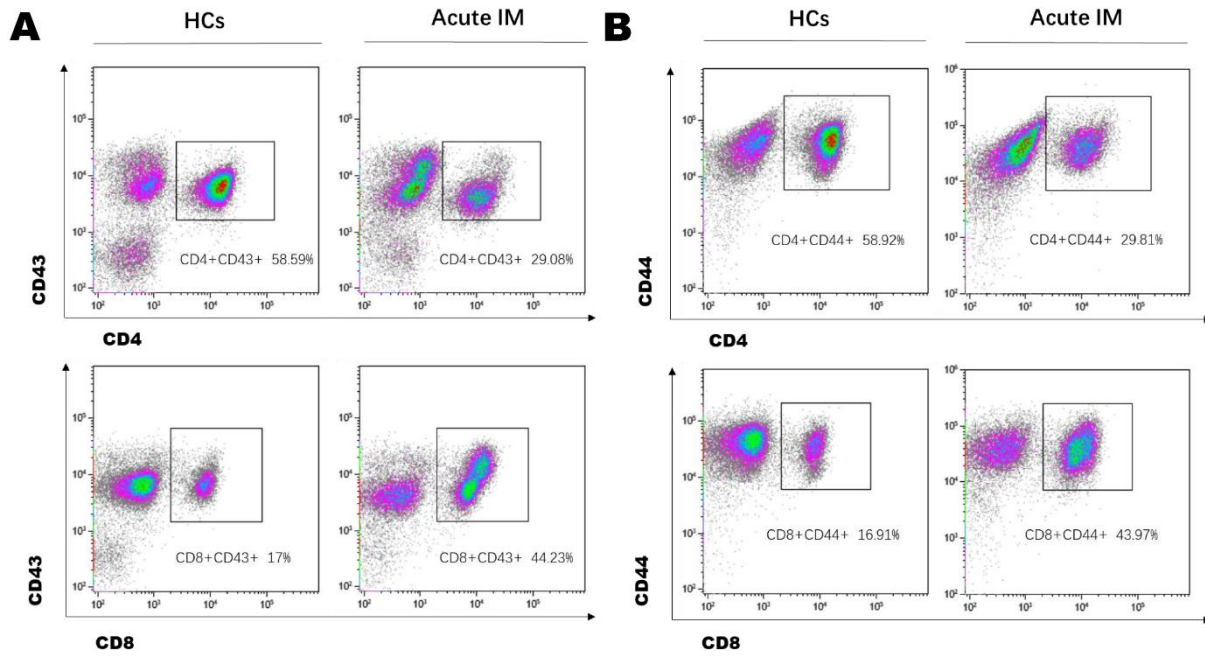


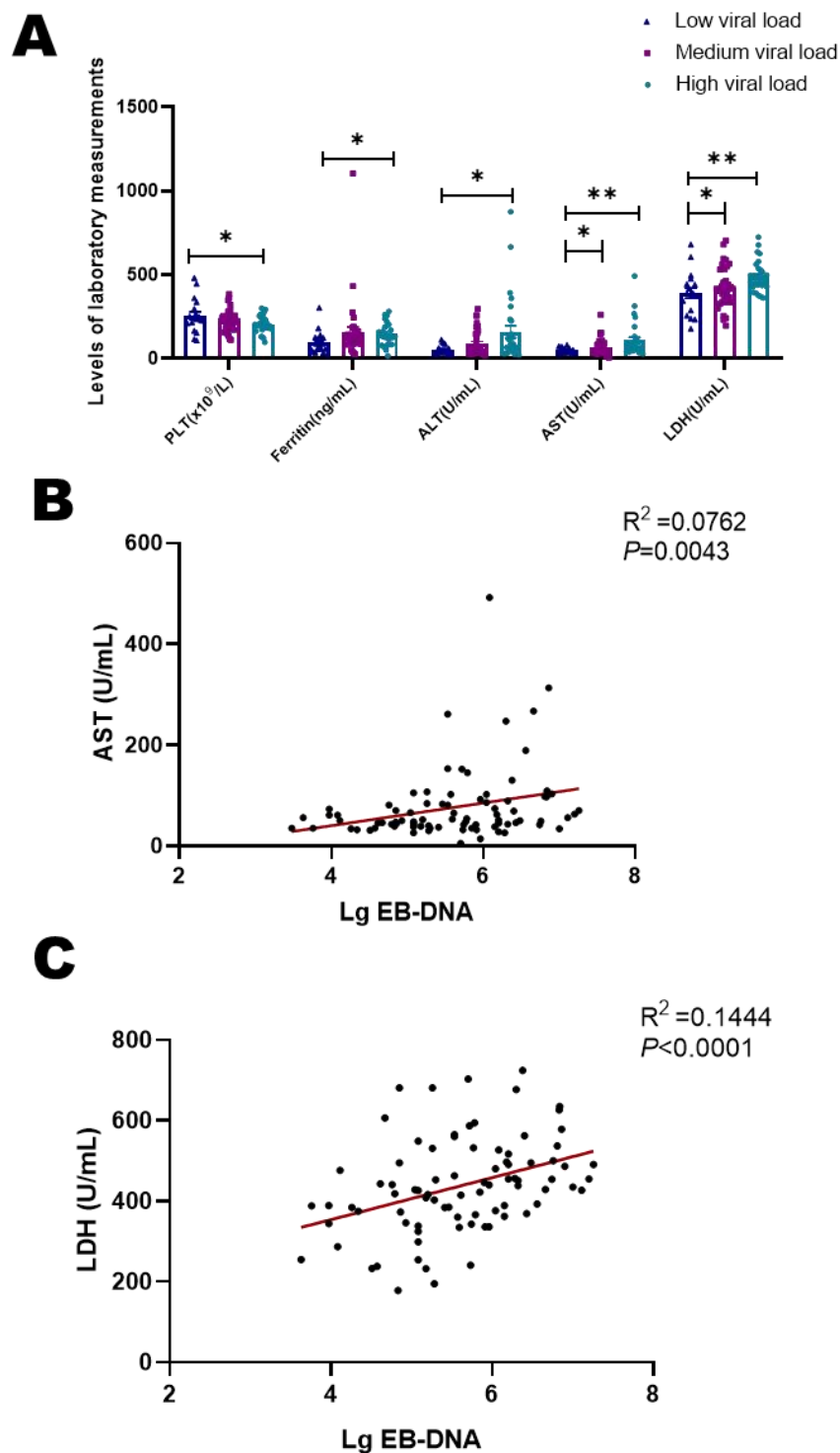
# Supplementary Material



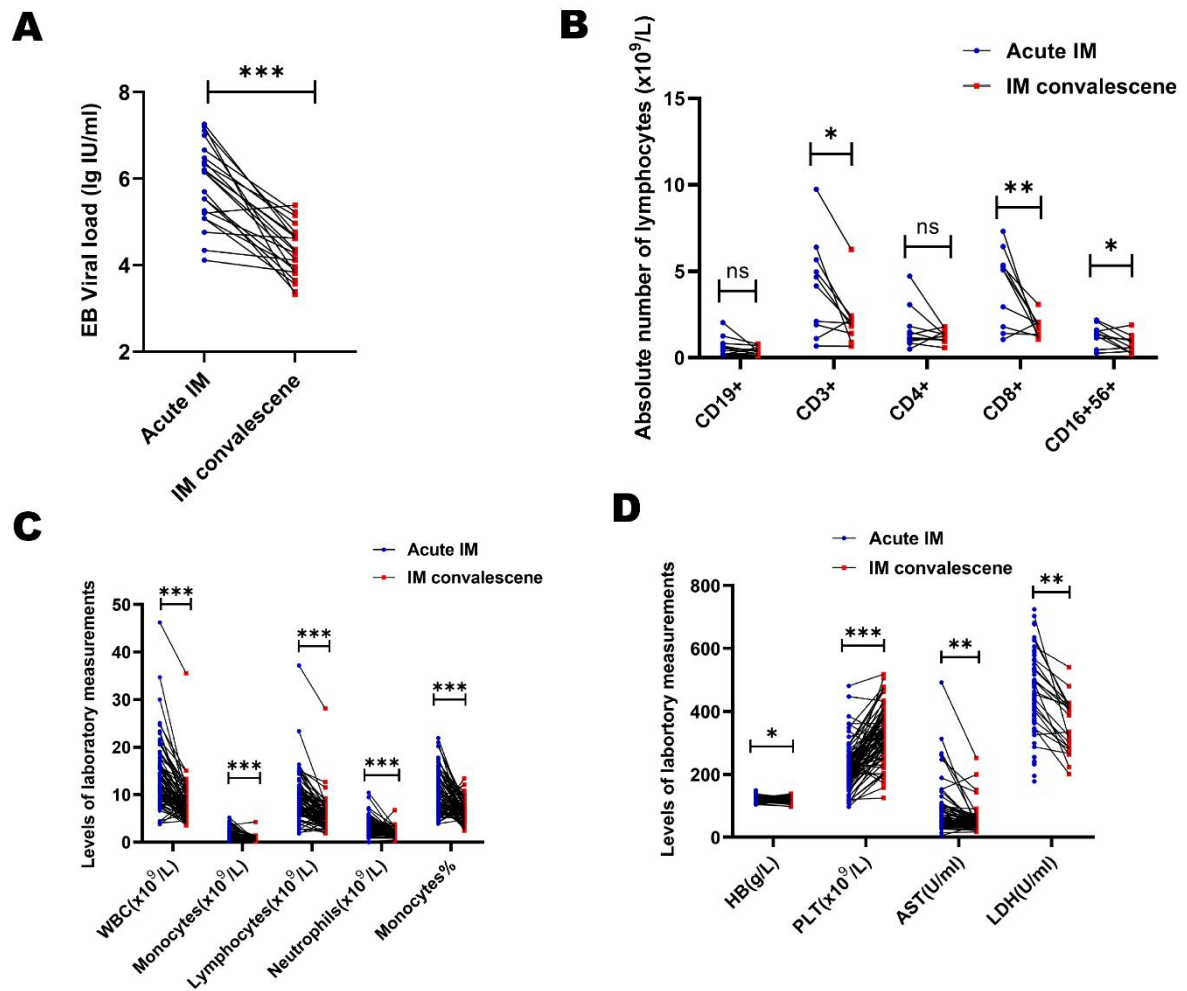
**Supplementary Figure 1.** The absolute number of CD19<sup>+</sup>B cells, CD3<sup>+</sup> T cells, CD4<sup>+</sup> T cells, CD8<sup>+</sup> T cells and NK cells in pediatric patients with infectious mononucleosis (IM) and healthy controls were analyzed. Data are expressed as the means ± SD. \*\*\**P* < 0.001.



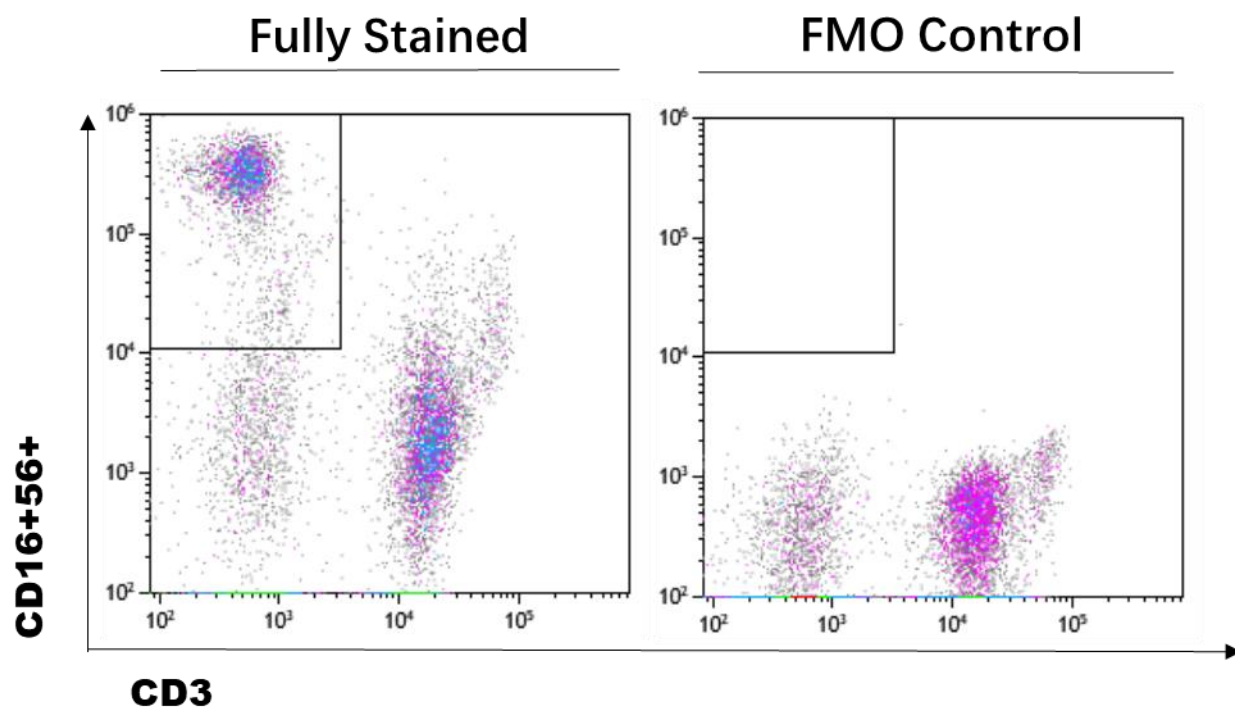
**Supplementary Figure 2.** Representative dot plots depicting the active markers CD43 (A) and CD44 (B) expression on CD4<sup>+</sup>T and CD8<sup>+</sup>T cells.



**Supplementary Figure 3.** Analysis of the correlation between EB viral load and general laboratory measurements. (A) The serum level of PLT, ferritin, ALT, AST and LDH in different viral load groups. Correlation between the EB viral load and AST (B) and LDH levels (C) were displayed. Data are expressed as the means $\pm$ SD. \*  $P < 0.05$ , \*\* $P < 0.01$ .



**Supplementary Figure 4.** The restoration of EBV viremia (A), the absolute number of different lymphocytes (B), blood routine test including the enumeration of WBC, monocytes, lymphocytes, neutrophils, and monocyte frequency (C), as well as general laboratory measurements including HB, PLT, AST, and LDH (D). Data are expressed as the means $\pm$ SD. \* $P < 0.05$ , \*\* $P < 0.01$ , \*\*\* $P < 0.001$ .



**Supplementary Figure 5.** Fluorescence-minus-one (FMO) control for gating CD16<sup>+</sup>56<sup>+</sup>.