

RESEARCH ARTICLE

Early Inflammatory Markers Are Independent Predictors of Cardiac Allograft Vasculopathy in Heart-Transplant Recipients

Carlos A. Labarrere^{1,2*}, John R. Woods³, James W. Hardin⁴, Beate R. Jaeger⁵, Marian Zembala⁶, Mario C. Deng⁷, Ghassan S. Kassab⁸

1. CBL Partners for Life, Indianapolis, Indiana, United States of America, 2. California Medical Innovations Institute, San Diego, California, United States of America, 3. Methodist Research Institute at Indiana University Health and Richard M. Fairbanks School of Public Health, Indiana University-Purdue University, Indianapolis, Indiana, United States of America, 4. University of South Carolina, Columbia, South Carolina, United States of America, 5. Dr. Stein und Kollegen, Mönchengladbach, Germany, 6. Silesian Center for Heart Diseases, Zabrze, Poland, 7. Ronald Reagan UCLA Medical Center, Los Angeles, California, United States of America, 8. California Medical Innovations Institute, San Diego, California, United States of America

*clabarrere@sbcglobal.net



CrossMark
click for updates

 OPEN ACCESS

Citation: Labarrere CA, Woods JR, Hardin JW, Jaeger BR, Zembala M, et al. (2014) Early Inflammatory Markers Are Independent Predictors of Cardiac Allograft Vasculopathy in Heart-Transplant Recipients. PLoS ONE 9(12): e113260. doi:10.1371/journal.pone.0113260

Editor: Suresh Kumar Verma, Center for Translational Medicine, United States of America

Received: July 22, 2014

Accepted: October 21, 2014

Published: December 9, 2014

Copyright: © 2014 Labarrere et al. This is an open-access article distributed under the terms of the [Creative Commons Attribution License](https://creativecommons.org/licenses/by/4.0/), which permits unrestricted use, distribution, and reproduction in any medium, provided the original author and source are credited.

Data Availability: The authors confirm that all data underlying the findings are fully available without restriction. All relevant data are within the paper.

Funding: Funding for this work was provided by the Methodist Research Institute. The funders had no role in study design, data collection and analysis, decision to publish, or preparation of the manuscript.

Competing Interests: The authors have declared that no competing interests exist.

Abstract

Background: Identification of risk is essential to prevent cardiac allograft vasculopathy (CAV) and graft failure due to CAV (GFDCAV) in heart transplant patients, which account for 30% of all deaths. Early CAV detection involves invasive, risky, and expensive monitoring approaches. We determined whether prediction of CAV and GFDCAV improves by adding inflammatory markers to a previously validated atherothrombotic (AT) model.

Methods and Findings: AT and inflammatory markers interleukin-6 (IL-6) and C-reactive protein (CRP) were measured in heart biopsies and sera of 172 patients followed prospectively for 8.9 ± 5.0 years. Models were estimated for 5- and 10-year risk using (1) the first post-transplant biopsy only, or (2) all biopsies obtained within 3 months. Multivariate models were adjusted for other covariates and cross-validated by bootstrapping. After adding IL-6 and CRP to the AT models, we evaluated the significance of odds ratios (ORs) associated with the additional inflammatory variables and the degree of improvement in the area under the receiver operating characteristic curve (AUROC). When inflammatory markers were tested alone in prediction models, CRP (not IL-6) was a significant predictor of CAV and GFDCAV at 5 (CAV: $p < 0.0001$; GFDCAV: $p = 0.005$) and 10 years (CAV: $p < 0.0001$; GFDCAV: $p = 0.003$). Adding CRP (not IL-6) to the best AT models improved discriminatory power to identify patients destined to develop CAV (using 1st biopsy: $p < 0.001$ and $p = 0.001$; using all 3-month biopsies: $p < 0.04$ and

$p=0.008$ at 5- and 10-years, respectively) and GFDCAV (using 1st biopsy: 0.92 vs. 0.95 and 0.86 vs. 0.89; using all 3-month biopsies: 0.94 vs. 0.96 and 0.88 vs. 0.89 at 5- and 10-years, respectively), as indicated by an increase in AUROC.

Conclusions: Early inflammatory status, measured by a patient's CRP level (a non-invasive, safe and inexpensive test), independently predicts CAV and GFDCAV. Adding CRP to a previously established AT model improves its predictive power.

Introduction

Cardiac allograft vasculopathy (CAV), an aggressive form of atherosclerosis, is the leading cause of graft failure in heart-transplant patients surviving beyond the first year [1] and is responsible for up to 30% of all deaths [2]. CAV is similar in many respects to native coronary artery disease (CAD). Unlike native CAD, however, which takes a lifetime to develop, CAV occurs very rapidly, within months to a few years after transplantation and develops uniformly throughout the entire vasculature. Because of its rapid occurrence, early detection is critical to the successful management of transplant patients. Thus, research has focused on identifying biomarkers that can reliably predict future CAV and graft failure.

We have shown previously that atherothrombotic (AT) markers detectable very early in biopsied heart tissue are reliably associated with CAV development and graft failure. These markers include the expression of intercellular adhesion molecule-1 (ICAM-1) [3–5], the presence of fibrin [6, 7], and the loss of microvascular antithrombin [8] and tissue plasminogen activator (tPA) [9].

Recently, we tested all of these AT markers in risk prediction models and demonstrated that Graft Failure Due to CAV (GFDCAV) very rarely develops in patients who show early absence of fibrin within 9 days post-transplantation (negative predictive accuracy using a single biopsy: 99% at 5 years and 96% at 10 years) [10], and persistence of normal tPA levels over the next 3 months (negative predictive accuracies: 99% at 5 years and 95% at 10 years) [10, 11]. This finding is clinically significant, implying that it is possible to identify a subgroup of patients within weeks of transplantation that may be able to safely forgo intensive monitoring with serial biopsies, a common practice in most transplant centers that is expensive and carries risks for patients.

Since CAV is also associated with systemic inflammation, as measured by elevated serum C-reactive protein (CRP) levels [3, 12], we sought to determine in the present study whether a patient's inflammatory status is independently predictive of CAV and GFDCAV and whether adding inflammatory status to our previously established AT models would significantly improve the model's predictive value.

Methods

Patients

The study population consisted of 241 consecutive adult patients with hearts transplanted from August 1989 to August 2004. Patients were included in the analysis if they survived at least three months after transplantation, had serial endomyocardial biopsies performed in the first three months, and had their coronary arteries examined angiographically and/or histopathologically for CAV at annual follow-ups. Of the original 241 candidates, 69 patients were excluded from analysis for the following reasons: 29 patients were missing three-month biopsy data, either because they died prior to three months ($n=14$) or because transplantation occurred at another institution ($n=15$); 38 survived three months but were excluded because of incomplete biopsy data; two survived but were excluded because of missing follow-up coronary evaluations. This left a sample of 172 patients who were followed prospectively until September 2010 (mean follow-up: 8.9 ± 5.0 years). The Indiana University local Institutional Review Board approved the study protocol and all subjects signed a consent form.

Clinical management and outcome criteria have been previously described by Labarrere et al [10]. Endomyocardial biopsies were performed on all 172 donor hearts at the time of transplantation before reperfusion (baseline) and serially during the first three months, with the first post-transplant biopsy obtained within a median 9 days of transplantation. CAV was evaluated in annual angiograms (mean number per patient: 5.25 ± 1.0). CAV was diagnosed if there were evidence of narrowing or luminal irregularities either in the left main or any primary or branch coronary vessels. CAV was determined by consensus of two experienced angiographers unaware of IL-6 and CRP levels or biopsy data. For recipients who died before their first annual angiogram, coronary arteries were examined histopathologically and GFDCAV was defined as (a) death associated with CAV-related cardiac allograft dysfunction, or (b) need for a second transplant due to severe CAV (left main stenosis $>70\%$, two or more primary vessels with stenoses $>70\%$, or branch stenoses $>70\%$ in all three systems) [8].

Determination of IL-6 and CRP concentrations

Serial serum samples, obtained at the time of each endomyocardial biopsy, were stored at -75°C for later analysis. Samples were thawed and assayed in duplicate for IL-6 and CRP using enzyme-linked immunosorbent assays (Human IL-6, Quantikine HS [high sensitivity] 600B, R&D Systems, Minneapolis, MN, USA; human CRP, ADI, San Antonio, TX, USA). Minimum detectable concentrations of IL-6 and CRP were 0.039 pg/mL and 350 pg/ml, respectively. Laboratory personnel were unaware of biopsy data or patients' outcome.

Immunohistochemistry studies

Endomyocardial biopsies were tested for fibrin, tPA, antithrombin, and ICAM-1 as described by Labarrere et al [10]. Immunohistochemical data were evaluated by two investigators unaware of clinical outcomes.

Coding of biomarkers

For predictive modeling, immunohistochemical data were scored as described by Labarrere et al [11] as illustrated in Fig. 1. For models that used only the first biopsy, immunohistochemical signs were scored either 0 (normal) or 1 (abnormal). For models that used all biopsies, the *proportion* of abnormal signs for each marker was calculated and re-scaled by a factor of 10 so that regression coefficients could be interpreted in terms of a 10% change in the proportion of abnormal biopsies. For IL-6 and CRP, median values obtained from all samples acquired in the first 3-months post-transplant for each patient were used in all predictive models.

Statistical models

Separate logistic regression models were developed to predict the onset of CAV and GFDCAV at 5 and 10 years after transplantation. These models were estimated from information obtained from the first biopsy only, and then re-estimated using information from all biopsies available in the first 3 months after transplantation. We considered the four AT predictors (fibrin, antithrombin, tPA, ICAM-1) and the two inflammatory predictors (median IL-6 and CRP values measured over the first 3 months). We developed two sets of models: one considered only inflammatory status, ignoring information about AT risk factors: the second evaluated whether adding inflammatory status to a model that already contained AT risk predictors improves the model prediction.

For the first set of models, the inflammatory markers IL-6 and CRP were used as the sole predictors using each marker in turn in separate univariate regressions; then both markers were included together in a multivariate equation.

For the second set of models we added the inflammatory markers, IL-6 and CRP, to our previously reported prediction models [10, 11], which included only atherothrombotic markers but not inflammatory markers. We refer to the previously reported atherothrombotic-only models as the “Established Models.” To determine whether knowledge of inflammatory status contributes additional predictive value to the Established Models, we re-estimated the Established Models with either IL-6, CRP, or both included as additional inflammatory predictors. We refer to these re-estimated models, which included both atherothrombotic as well as inflammatory markers, as the “New Models.”

Coefficients associated with the atherothrombotic markers and adjustment variables from the Established Models were constrained in the re-estimated models so that we could determine whether adding inflammatory status significantly improved predictive accuracy beyond that already achieved by

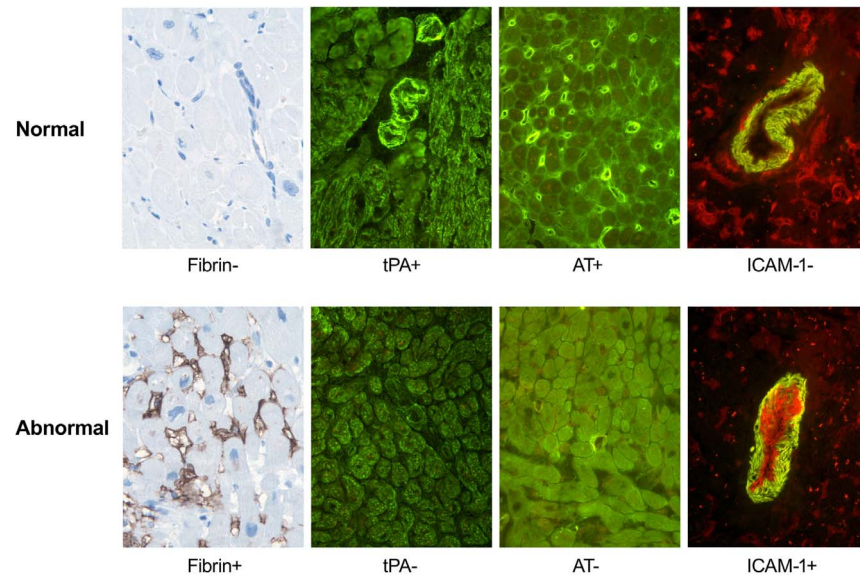


Figure 1. Immunohistochemical characteristics of a thrombotic/activated microvasculature. Normal hearts (top row) have absence of fibrin (Fib-), presence of microvascular antithrombin (AT+) and tissue plasminogen activator (tPA+) and absence of arterial endothelial ICAM-1 (ICAM-1-). Abnormal thrombotic and activated hearts (bottom row) are characterized by presence of fibrin (Fib+), loss of microvascular antithrombin (AT-) and tissue plasminogen activator (tPA-) and expression of arterial endothelial ICAM-1 (ICAM-1+). Original magnification $\times 640$. This figure has been reproduced with permission from: Labarrere CA, Woods JR, Hardin JW, Campana GL, Ortiz MA, et al. (2012) Value of the First Post-Transplant Biopsy for Predicting Long-Term Cardiac Allograft Vasculopathy (CAV) and Graft Failure in Heart Transplant Patients. PLoS ONE 7(4): e36100. doi: 10.1371/journal.pone.0036100.

doi:10.1371/journal.pone.0113260.g001

knowing the patient's atherothrombotic status. The incremental contribution to predictive accuracy was evaluated by noting whether the odds ratios (ORs) associated with the inflammatory markers were independently predictive of outcome, and by comparing the Established and New Models in terms of overall improvement in the AUROC, and gains in the percentage of correctly classified patients [13].

Effron's bootstrap method [14] was used to validate model coefficients. Each model was estimated 200 times using repeated samples drawn from the original data with replacement. We calculated receiver operating characteristic (ROC) curves and used the Youden Index [15] to identify optimum cut-off values. Model performance was further quantified by evaluating sensitivity, specificity, and predictive accuracy. The AUROC [16] was used to quantify the models' discriminative accuracy. Bootstrapping of 1,000 repeated samples was used to test the statistical significance of improvements in the AUROC attributable to adding inflammatory markers to the model. We also compared overall percentages of patients correctly classified.

Results

Demographic and clinical characteristics of the patient population assessed at three months post-transplant are shown in [Table 1](#).

Predictive value when inflammatory markers are the sole predictors

Results for regression models using only inflammatory markers IL-6 and CRP to predict CAV and GFDCAV are provided in [Tables 2 and 3](#). In univariate models, CRP was a significant predictor of CAV and GFDCAV at both 5 and 10 years post-transplant. In no case was IL-6 a significant univariate predictor. In multivariate models where both CRP and IL-6 were included together as predictors, CRP (but not IL-6) was significantly predictive of CAV at both 5- and 10-years post-transplant ([Table 2](#)) and GFDCAV at 10-years post-transplant ([Table 3](#)). IL-6 (but not CRP) was a marginally significant predictor ($P=0.06$) of GFDCAV at 5 years ([Table 3](#)). Discriminative performance as measured by the AUROC ranged from 0.77 to 0.86.

Improvement in prediction when inflammatory markers are added to the Established Models

Regressions with IL-6 and CRP as additional predictors in the Established Models are summarized for the predictions of CAV ([Tables 4 and 5](#)) and GFDCAV ([Tables 6 and 7](#)). For each condition summarized in [Tables 4, 5, 6 and 7](#), we estimated three different models that added either IL-6, CRP, or both to the Established Model. Results are reported for the best models as judged by the improvement in the AUROC. In nearly all cases, CRP (but not IL-6) was statistically significant when included in the Established Models, indicating that a patient's inflammatory status is independently predictive of outcome, as measured by elevated serum CRP concentrations, after accounting for statistically significant measures of the patient's atherothrombotic status.

A common method of judging whether a new model represents an improvement over an established model is to compare the AUROC values of the two models [[13](#)]. Adding the best inflammatory predictors (usually CRP, alone) to the Established Model improved model discrimination in all cases ([Fig. 2](#)). Not all improvements, however, were statistically significant. The lack of statistical significance was primarily due to the Established Model's AUROC statistics already being quite high which leaves little margin for improvement.

[Tables 8 and 9](#) summarize other performance characteristics of the New Models. On the whole, sensitivity and specificity were improved, indicating that the New Models are better able to single out patients at risk of CAV and GFDCAV without falsely identifying those not at risk. For the clinician, an important question concerns the accuracy of a given patient's result, which is reflected in the model's positive and negative predictive value (PPV and NPV). For the prediction of CAV ([Table 8](#)), PPV and NPV improved in most instances when the patient's

Table 1. Summary of demographic and clinical variables (Patients: n=172).

VARIABLE	VALUE				
Donor:					
Age, mean years (\pm SD)	28.8		(\pm 11.2)		
Sex (percent male)	78.5				
Recipient:					
Age, mean years (\pm SD)	48.7		(\pm 10.2)		
Sex (percent male)	66.9				
Race (percent white)	89.5				
Body mass index (kg/m ²), mean (\pm SD)	26.5		(\pm 5.0)		
Diabetics (%)	40.1				
Insulin dependent diabetics (%)	31.4				
Reason for transplantation:					
Coronary artery disease (%)	45.9				
Cardiomyopathy (%)	47.1				
Other (%)	7.0				
Ischemic time (minutes), mean (\pm SD)	156.8		(\pm 56.6)		
Smokers after transplantation (%)	7.6				
Hypertensives (%)	89.0				
Cholesterol (mmol/l):					
Total cholesterol, mean (\pm SD)	5.4		(\pm 1.0)		
LDL-C, mean (\pm SD)	2.6		(\pm 0.8)		
HDL-C, mean (\pm SD)	1.2		(\pm 0.4)		
Number of HLA mismatches:	0	1	2	3	4
A/B (%)	0	5.8	16.3	47.1	30.8
DR (%)	7.00	39.0	54.0		
Creatinine > 123.8 μmol/l (%)	58.1				
Ejection fraction, mean (%) (\pm SD)	54.3		(\pm 7.4)		
2R-3R rejections (1st 3-mos), mean (\pm SD)	0.2		(\pm 0.4)		
Biopsies (1st 3-months), mean (\pm SD)	5.2		(\pm 1.0)		
CMV infections (% positive)	12.8				
Cell Panel Reactive Antibodies > 0% (%)	8.1				
Treatment:					
Prednisone (%)	100.0				
Cyclosporine (%)	94.2				
Azathioprine (%)	68.0				
Mycophenolate mofetil (%)	65.7				
Tacrolimus (%)	11.0				
Sirolimus (%)	7.0				
Statins (%)	77.9				
Calcium Channel Blockers (%)	77.9				
ACE Inhibitors/ARBs (%)	43.0				

All data based on entire sample of 172 patients.

Abbreviations: SD: Standard Deviation; HLA: human leukocyte antigen; LDL-C: low density lipoprotein cholesterol; HDL-C: high density lipoprotein cholesterol; CMV: cytomegalovirus; ACE: Angiotensin-Converting Enzyme; ARB: Angiotensin Receptor Blockers.

doi:10.1371/journal.pone.0113260.t001

Table 2. Logistic regression models using information from inflammatory markers IL-6 and CRP to predict CAV at 5- and 10-years post-transplantation.

	5-Year Risk of CAV				10-Year Risk of CAV			
	OR	<i>p</i>	95% C.I.	ROC Area	OR	<i>p</i>	95% C.I.	ROC Area
Univariate Models:								
IL-6, only	1.04	0.59	0.91–1.18	0.70	0.99	0.91	0.88–1.12	0.33
CRP, only	1.41	<0.0001	1.24–1.61	0.81	1.55	<0.0001	1.30–1.84	0.83
Multivariate Model:								
IL-6	1.90	0.13	0.83–4.34	0.84	1.34	0.44	0.64–2.81	0.83
CRP	1.21	0.02	1.03–1.40		1.51	<0.0001	1.26–1.82	

Median IL-6 and CRP values measured over the first 3 months post-transplant were used in all predictive models.

Abbreviations: IL-6: Interleukin-6; CRP: C-reactive protein; CAV: Cardiac allograft vasculopathy; OR: Odds ratio; C.I.: Confidence interval; ROC: Receiver operating characteristic.

doi:10.1371/journal.pone.0113260.t002

inflammatory status was added to the Established Model. For the prediction of GFDCAV (Table 9), NPV was already quite high in the Established Models and remained high when inflammatory status was added to the model. PPVs for the prediction of GFDCAV, however, were low and remained low, even after taking inflammatory status into account. Thus, heart transplant recipients exhibiting an early negative result, whether measured by the New Models or the Established Models, are very *unlikely* to develop GFDCAV over the next 10 years and can be reassured accordingly. However for those exhibiting early positive results, predictions are less reliable.

Discussion

We have demonstrated that early inflammatory status is associated with long-term outcome following heart transplantation. Elevated serum CRP concentration, even when measured very early after transplantation, is a significant *independent* predictor of long-term CAV and GFDCAV. Inclusion of information about serum

Table 3. Logistic regression models using information from inflammatory markers IL-6 and CRP to predict GFDCAV at 5- and 10-years post-transplantation.

	5-Year Risk of GFDCAV				10-Year Risk of GFDCAV			
	OR	<i>p</i>	95% C.I.	ROC Area	OR	<i>p</i>	95% C.I.	ROC Area
Univariate Models:								
IL-6, only	1.04	0.63	0.89–1.20	0.75	1.01	0.92	0.87–1.17	0.66
CRP, only	1.19	0.005	1.05–1.34	0.86	1.16	0.003	1.05–1.28	0.80
Multivariate Model:								
IL-6	2.69	0.06	0.94–7.72	0.84	1.60	0.26	0.71–3.63	0.77
CRP	1.11	0.10	0.98–1.24		1.11	0.05	1.00–1.24	

Median IL-6 and CRP values measured over the first 3 months post-transplant were used in all predictive models.

Abbreviations: IL-6: Interleukin-6; CRP: C-reactive protein; graft failure due to cardiac allograft vasculopathy: GFDCAV; OR: Odds ratio; C.I.: Confidence interval; ROC: Receiver operating characteristic.

doi:10.1371/journal.pone.0113260.t003

Table 4. Logistic regression models for the prediction of CAV using the first biopsy obtained within a median 9-days of transplantation.

First Biopsy	5-Year Risk of CAV			10-Year Risk of CAV			
	OR	p	95% C.I.	OR	p	95% C.I.	
<i>Established Model (AT, only):</i>				<i>Established Model (AT, only):</i>			
Antithrombin	5.34	<0.0001	2.69–10.58	Antithrombin	8.73	<0.0001	3.81–20.04
3-mo rejections	0.33	0.008	0.14–0.75	MMF regimen	0.37	0.02	0.16–0.84
				Recipient sex (male)	2.01	0.08	0.93–4.37
				HLA-AB mismatch	0.41	0.05	0.17–0.99
				Statins	2.12	0.11	0.85–5.30
<i>Inflammatory markers added:</i>				<i>Inflammatory markers added:</i>			
CRP	1.32	<0.0001	1.16–1.51	CRP	1.41	0.0002	1.18–1.69

Established Models use information from atherothrombotic markers, only (AT, only). New Models add information from inflammatory markers (CRP and IL-6) to the Established Model.

Abbreviations: CAV: Cardiac Allograft Vasculopathy; CRP: C-reactive protein; IL-6: Interleukin-6; OR: Odds Ratio; C.I.: Confidence Interval; AT: Atherothrombotic; MMF: Mycophenolate mofetil; HLA-AB: human leukocyte antigen-A, -B.

doi:10.1371/journal.pone.0113260.t004

CRP, but not IL-6, improves the discriminative accuracy of the previously Established Models that use only AT risk predictors.

We have previously shown that when heart-transplant recipients exhibit early loss of microvascular antithrombin [8] and tPA [9], the presence of myocardial fibrin deposits [6, 7], and the expression of arterial endothelial ICAM-1 [3–5] in biopsied heart tissue, they are more likely to develop long-term CAV and GFDCAV in the ensuing 10 years. Recently, we developed multivariate prediction models that combine information from these AT markers (the Established Models in this paper). Here, for the first time, we have incorporated inflammatory markers into those Established Models and have shown that the New Models possess better discriminative accuracy and enhanced ability to classify patients correctly.

Table 5. Logistic regression models for the prediction of CAV using all biopsies obtained within the first 3-months post-transplant.

All Biopsies in 1 st 3-Months	5-Year Risk of CAV			10-Year Risk of CAV			
	OR	p	95% C.I.	OR	p	95% C.I.	
<i>Established Model (AT, only):</i>				<i>Established Model (AT, only):</i>			
tPA	1.41	<0.0001	1.26–1.58	Antithrombin	1.47	<0.0001	1.29–1.68
Recipient sex (male)	2.34	0.04	1.05–5.19	MMF regimen	0.49	0.09	0.21–1.12
HLA-AB mismatch	0.37	0.02	0.15–0.88	Recipient sex (male)	2.55	0.03	1.12–5.80
				HLA-AB mismatch	0.48	0.12	0.19–1.20
				3-mo rejections	0.40	0.10	0.13–1.21
<i>Inflammatory markers added:</i>				<i>Inflammatory markers added:</i>			
CRP	1.25	0.002	1.09–1.44	CRP	1.34	0.002	1.11–1.61

Established Models use information from atherothrombotic markers, only (AT, only). New Models add information from inflammatory markers (CRP and IL-6) to the Established Model.

Abbreviations: CAV: Cardiac Allograft Vasculopathy; CRP: C-reactive protein; IL-6: Interleukin-6; OR: Odds Ratio; C.I.: Confidence Interval; AT: Atherothrombotic; tPA: tissue plasminogen activator; MMF: Mycophenolate mofetil; HLA-AB: human leukocyte antigen-A, -B.

doi:10.1371/journal.pone.0113260.t005

Table 6. Logistic regression models for the prediction of GFDCAV using the first biopsy obtained within a median 9-days of transplantation.

First Biopsy	5-Year Risk of GFDCAV			10-Year Risk of GFDCAV			
	OR	p	95% C.I.	OR	p	95% C.I.	
<i>Established Model (AT, only):</i>			<i>Established Model (AT, only):</i>				
Fibrin	9.33	0.001	2.34–37.12	Fibrin	3.99	0.005	1.53–10.40
MMF regimen	0.08	0.0008	0.02–0.35	MMF regimen	0.12	<0.0001	0.04–0.32
Statins	0.10	0.0007	0.28–0.38	Statins	0.21	0.002	0.08–0.55
<i>Inflammatory markers added:</i>			<i>Inflammatory markers added:</i>				
CRP	1.12	0.01	1.02–1.23	CRP	1.09	0.03	1.01–1.17

Established Models use information from atherothrombotic markers, only (AT, only). New Models add information from inflammatory markers (CRP and IL-6) to the Established Model.

Abbreviations: Graft Failure Due to Cardiac Allograft Vasculopathy: GFDCAV; CRP: C-reactive protein; IL-6: Interleukin-6; OR: Odds Ratio; C.I.: Confidence Interval; AT: Atherothrombotic; MMF: Mycophenolate mofetil.

doi:10.1371/journal.pone.0113260.t006

Although AUROC statistics improved in all cases when the New and Established Models were compared, some of the differences were small and not all were statistically significant. It is well known that when the AUROCs of two models (one with and one without the new marker) are compared, the difference is often small [17] and large odds ratios are required to cause a meaningful increase [18]. Additionally, AUROCs for our Established Models were already high, creating a ceiling effect that left very little margin for improvement.

The observation that CRP was a significant risk predictor in almost all cases, while IL-6 was not, may indicate a statistical correlation between these markers. Once one inflammatory marker explains the risk attributable to inflammation, there may be very little additional risk to be explained by a second inflammatory marker. Additionally, because IL-6 is a precursor of CRP, the presence of IL-6 may be *necessary* but not *sufficient* for elevated risk. In other words, risk might not be influenced by the presence of IL-6 alone, but only by the presence of IL-6 when it elicits CRP.

Table 7. Logistic regression models for the prediction of GFDCAV using all biopsies obtained within the first 3-months post-transplant.

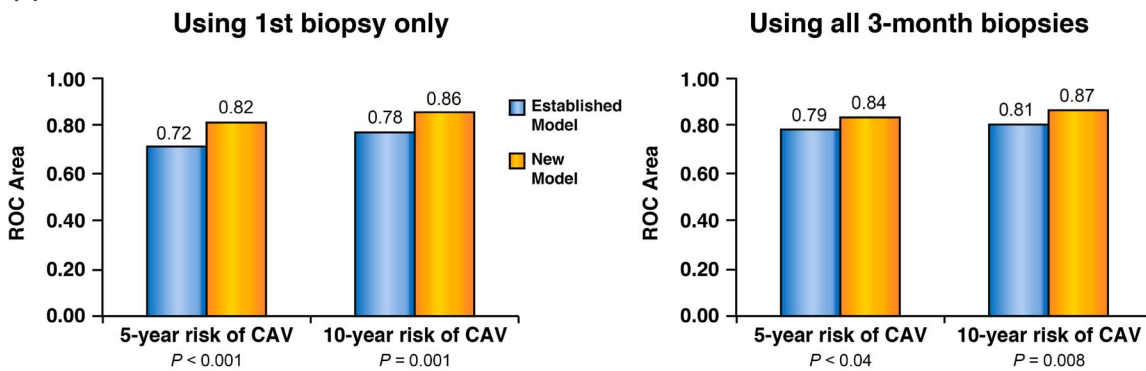
All Biopsies in 1 st 3-Months	5-Year Risk of GFDCAV			10-Year Risk of GFDCAV			
	OR	p	95% C.I.	OR	p	95% C.I.	
<i>Established Model (AT, only):</i>			<i>Established Model (AT, only):</i>				
tPA	1.73	0.002	1.22–2.45	tPA	1.31	0.001	1.12–1.54
MMF regimen	0.11	0.004	0.25–0.49	MMF regimen	0.15	0.0002	0.06–0.41
Statins	0.06	0.0002	0.01–0.27	Recipient sex (male)	2.77	0.08	0.88–8.77
				Statins	0.17	0.0006	0.06–0.47
<i>Inflammatory markers added:</i>			<i>Inflammatory markers added:</i>				
CRP	1.11	0.03	1.01–1.21	CRP	1.09	0.04	1.01–1.18

Established Models use information from atherothrombotic markers, only (AT, only). New Models add information from inflammatory markers (CRP and IL-6) to the Established Model.

Abbreviations: Graft Failure Due to Cardiac Allograft Vasculopathy: GFDCAV; CRP: C-reactive protein; IL-6: Interleukin-6; OR: Odds Ratio; C.I.: Confidence Interval; AT: Atherothrombotic; tPA: tissue plasminogen activator; MMF: Mycophenolate mofetil.

doi:10.1371/journal.pone.0113260.t007

(a) CAV



(b) GFDCAV

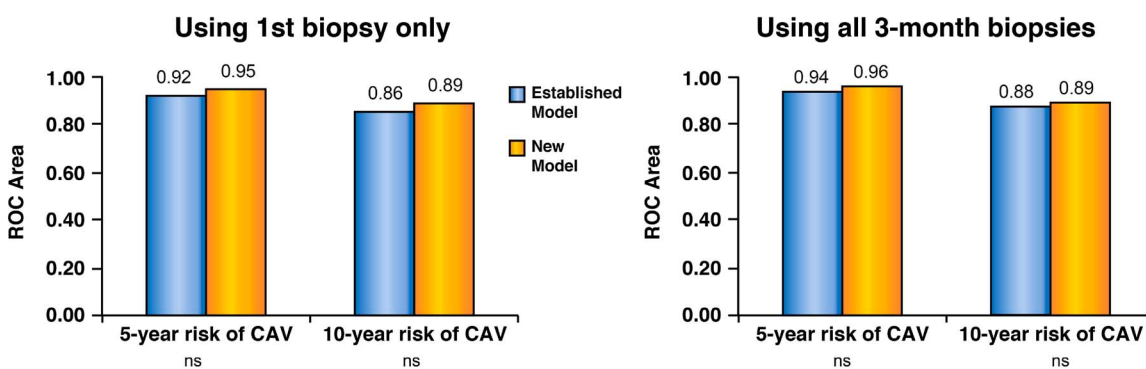


Figure 2. Prediction of (a) CAV and (b) Graft Failure Due to CAV (GFDCAV). Including inflammatory status (CRP) to the established AT prediction model improves discriminatory power as defined by the increase in the area under the ROC curve.

doi:10.1371/journal.pone.0113260.g002

Our findings support the theory that CAV is a disease that is associated with endothelial activation and coagulation, as well as the increased presence of circulating inflammatory molecules such as CRP. From a risk-prediction perspective, these two processes appear to be statistically independent since adding inflammatory markers to our Established (atherothrombotic) Model improved prediction. But we have also shown that prediction is possible using inflammatory markers by themselves. A comparison of the AUROC values in [Tables 2 and 3](#) and [Fig. 2](#) reveals that models using inflammatory markers alone had nearly the same discriminative accuracy as the Established Models. This is a potentially important clinical finding that warrants further exploration, since it may be possible to develop good prediction models based solely on markers of systemic inflammation that can be measured frequently and inexpensively by a simple blood test. This is in contrast with atherothrombotic markers that can be determined only infrequently, are more expensive, and require an invasive biopsy.

From a larger scientific perspective, our findings suggest the potential utility of studying the transplanted heart as an accelerated model of native CAD. Although CAD takes a lifetime to develop in the general population, it develops analogously

Table 8. CAV: Performance of the Established Model (which uses atherothrombotic markers, only), with the New Model (which adds inflammatory markers to the Established Model).

	Using 1 st biopsy, only		Using all 3-month biopsies	
	<i>Established Model</i>	<i>New Model</i>	<i>Established Model</i>	<i>New Model</i>
5-year risk				
Sensitivity	0.79	0.70	0.78	0.87
Specificity	0.58	0.84	0.70	0.63
PPV	0.65	0.81	0.72	0.70
NPV	0.74	0.73	0.76	0.83
Pct Correct ^a	0.69	0.77	0.74	0.75
Cutoff Value ^b	0.27	0.56	0.44	0.30
Prevalence ^c	0.50		0.50	
10-year risk				
Sensitivity	0.62	0.79	0.76	0.77
Specificity	0.82	0.83	0.75	0.79
PPV	0.86	0.89	0.84	0.87
NPV	0.56	0.70	0.64	0.67
Pct Correct ^a	0.70	0.80	0.76	0.78
Cutoff Value ^b	0.68	0.57	0.58	0.57
Prevalence ^c	0.63		0.63	

Both models were developed using markers obtained from the 1st biopsy only (median 9-days post-transplant) and markers from all biopsies obtained during the first 3 months to predict the risk of developing CAV at 5- or 10-years post-operatively.

Abbreviations: CAV: cardiac allograft vasculopathy; PPV: positive predictive value; NPV: negative predictive value.

^aPct correct: The percentage of cases correctly classified by the model considering both positive and negative classifications.

^bCutoff value: The predicted value from the logistic regression that serves as the threshold for predicting CAV. Patients with predicted values exceeding the cutoff are predicted to develop CAV.

^cPrevalence: The proportion of patients that developed CAV during the indicated time interval.

doi:10.1371/journal.pone.0113260.t008

in the heart transplant patient over a span of months. Consequently, it may be possible to study the etiology of this disease prospectively, to identify biomarkers that predict its occurrence and course, and to test preventive interventions much more rapidly in cohorts of heart transplant patients than by observing the natural history of CAD in the general population.

Our study evaluated the statistical properties of IL-6 and CRP as biomarkers and early predictors of atherothrombosis. It was not designed to explain basic biological mechanisms. Our findings are consistent, however, with a growing body of biological evidence from recent experimental studies, however, revealing some of the causal relationships that may exist between proinflammatory mediators of atherothrombosis.

We have shown a strong association between a) CRP levels and endothelial activation, and b) CRP levels and subsequent development of CAV and graft failure [3]. CRP is known to be an important risk factor for native atherosclerosis and native CAD [19]. Elevated CRP plasma levels predict cardiovascular events among apparently healthy men [20–23] and women [24], patients with stable and unstable angina [25–29], and patients with a previous history of myocardial infarction [30]. Elevated CRP serum levels may promote atherosclerosis through its effect on adhesion molecule expression, since it has been shown that CRP

Table 9. GFDCAV: Performance of the Established Model (which uses atherothrombotic markers, only), with the New Model (which adds inflammatory markers to the Established Model).

	Using 1 st biopsy, only		Using all 3-month biopsies	
	<i>Established Model</i>	<i>New Model</i>	<i>Established Model</i>	<i>New Model</i>
5-year risk				
Sensitivity	0.83	1.00	0.94	1.00
Specificity	0.85	0.80	0.82	0.84
PPV	0.39	0.35	0.39	0.41
NPV	0.98	1.00	0.99	1.00
Pct Correct ^a	0.85	0.82	0.84	0.85
Cutoff Value ^b	0.04	0.03	0.05	0.06
Prevalence ^c	0.10		0.10	
10-year risk				
Sensitivity	0.87	0.93	0.77	0.76
Specificity	0.74	0.75	0.89	0.90
PPV	0.43	0.46	0.60	0.65
NPV	0.96	0.98	0.95	0.95
Pct Correct ^a	0.77	0.78	0.87	0.88
Cutoff Value ^b	0.12	0.13	0.23	0.33
Prevalence ^c	0.18		0.18	

Both models were developed using markers obtained from the 1st biopsy only (median 9-days post-op) and markers from all biopsies obtained during the first 3 months to predict the risk of graft failure at 5- or 10-years post-operatively.

Abbreviations: GFDCAV: graft failure due to cardiac allograft vasculopathy; PPV: positive predictive value; NPV: negative predictive value.

^aPct correct: The percentage of cases correctly classified by the model considering both positive and negative classifications.

^bCutoff value: The predicted value from the logistic regression that serves as the threshold for predicting GFDCAV. Patients with predicted values exceeding the cutoff are predicted to experience GFDCAV.

^cPrevalence: The proportion of patients that had GFDCAV during the indicated time interval.

doi:10.1371/journal.pone.0113260.t009

induces ICAM-1 expression in coronary artery endothelial cells [31,32]. Proinflammatory molecules, such as CRP can also down regulate tissue plasminogen activator (tPA) [33]. Possible links between CRP and adhesion molecule expression and between CRP and atherosclerosis have been reported, and an association has been demonstrated between elevated CRP levels and development of CAV [3] and graft failure in heart transplant recipients [3,34].

IL-6 has been shown to directly promote coagulation, apparently without affecting fibrinolysis [35]. Cytokines such as interleukin-1, tumor necrosis factor, and IL-6 are also known to induce tissue factor expression in endothelial cells and circulating monocytes [36,37]. Moreover, fibrin and fibrin degradation induce expression of proinflammatory cytokines such as IL-6 and interleukin-8 [36]. This cross-stimulation can lead to the persistence of a proinflammatory and prothrombotic microenvironment in the allograft. IL-6 also induces ICAM-1 expression on endothelial cells [38,39] and may play a role in development and progression of atherosclerosis; adhesion molecules such as ICAM-1 and VCAM-1 play a significant role in cell recruitment within the intima during atheroma formation [31].

Another marker of inflammation, CRP, is mainly released by hepatocytes after IL-6 stimulation and is independently predictive of atherothrombosis. CRP is also

associated with increased endothelial activation, soluble ICAM-1 levels [3, 40], and angiographic evidence of atherothrombosis development and progression [12, 40]. Patients who develop atherothrombosis have significantly higher levels of IL-6 and CRP compared to the patients who do not develop atherothrombosis [12, 40, 41]. Importantly, these same markers are predictive of CAD and cardiovascular events in the general population. The significance of CRP as a predictor of atherosclerosis-related events, however, remains controversial [42].

Several investigators have evaluated the association of plasma CRP levels with CAV and cardiac graft survival. Pethig et al [12] suggested that progressive CAV is accompanied by elevated CRP levels. Labarrere and colleagues [3] demonstrated that early increases in CRP are associated with an increase in cardiac ICAM-1 expression and soluble ICAM-1 levels, which is predictive of more aggressive CAV and graft failure. Hognestad et al [40] suggested a link between CRP and CAV and also correlated statin therapy with a decrease in CRP levels, providing further evidence for the role of inflammation in CAV [43].

Our study has strengths and weaknesses. Weaknesses include the utilization of angiography rather than intravascular ultrasound [44] and the lack of baseline angiograms at the time of transplantation. From a statistical point of view, our prediction models ultimately need to be tested in other populations by other investigators working in other settings in order to evaluate their generalizability. However, our models did undergo cross-validation on repeated bootstrap samples. Cross-validation produces estimates of a model's likely performance on future data and greatly reduces the likelihood of spurious variable selection that is often the most important source of bias arising from stepwise regression on a single sample [45]. Strengths include the relatively large number of transplant patients, the long multi-year follow-up, and the availability of a large immunohistochemical heart-biopsy database.

This study, along with the results of our previous work [31] on atherothrombosis following heart transplantation, suggests a fascinating and still incompletely understood relationship between inflammatory molecules and atherothrombosis in the pathogenesis of CAV and its complications. The involvement of CRP in arterial vasculopathy of transplanted hearts points to the possibility of using these molecules as therapeutic targets [46] to block or delay disease development or progression.

From a clinical perspective, our findings suggest new possibilities for exploring a multifactor battery of biomarkers such as fibrin deposits within the graft microvasculature, increased serum cardiac troponin I levels as evidence of myocardial damage within the allografts, markers associated with a lack of anticoagulant and fibrinolytic capacity, and activation markers derived from the up-regulation of endothelial ICAM-1 [4–9, 47, 48], which had been demonstrated to be early biomarkers of a negative outcome. Furthermore, although high circulating levels of the pro-inflammatory molecule CRP, a major component of the innate immune system in humans, is associated with the development and progression of native atherosclerosis and CAV, another component of the innate immune system, immunoglobulin (Ig) M and/or IgG natural antibodies (NAbs),

may convey an atheroprotective function since high titers of IgM and/or IgG NAbs have been associated with reduced atherosclerosis and low levels are associated with reduced vein graft plaque in mice [49] and reduced atherosclerosis in mice and humans [50–55]. NAbs could also be added as future biomarkers to evaluate the risk of CAV in the heart transplant population.

There are three important implications of our findings that are of practical significance for clinical practice.

First, heart transplant patients should be assessed for both (1) early signs of atherothrombosis, as represented in our previously described models [10, 11] by the presence of microvascular fibrin and the depletion of tPA, and (2) early signs of inflammation, as represented in the new models described herein by the presence of CRP and its precursor, IL-6. The present study shows that both atherothrombosis and inflammation are important because they are independently predictive. Knowing a patient's inflammatory status adds prognostic information beyond that which would otherwise be available from knowing only the patient's atherothrombotic status.

Second, valuable clinical predictions about a patient's long-term chances of developing CAV and GFDCAV can be made very early, within days of the transplant procedure. Our findings show that almost as much prognostic information can be gained from a single biopsy obtained immediately after transplantation as can be gained from multiple biopsies obtained over the first 3 months.

Third, the clinical significance of these early markers relates primarily to their ability to make *negative* predictions. A patient who has a profile immediately after transplantation that is characterized by low inflammation and an absence of microvascular atherothrombosis is very unlikely to develop CAV or graft failure over at least the next 10 years. These patients may be able to safely forgo intensive follow-up and may be able to avoid frequent invasive testing that not only increases costs for the health care system but also poses risks for the patient. On the other hand, these markers are less accurate when it comes to positive predictions. Knowing that a patient has tested positive for early inflammation and/or signs of atherothrombosis does not mean that the patient is inevitably destined to develop CAV. Continued testing is indicated for those who test positive. Finally, the study's sample size and focus on early results offer insight into outcomes for transplant patients. Other studies are needed to validate these findings and investigate whether the early outcomes' predictive abilities hold for longer follow-up times.

Author Contributions

Conceived and designed the experiments: CAL BRJ MZ MCD GSK. Performed the experiments: CAL GSK. Analyzed the data: CAL JRW JWH BRJ MZ MCD GSK. Contributed reagents/materials/analysis tools: CAL JRW JWH MCD. Wrote the paper: CAL JRW JWH BRJ MZ MCD GSK.

References

1. **Dhaliwal A, Thohan V** (2006) Cardiac allograft vasculopathy: the Achilles' heel of long-term survival after cardiac transplantation. *Curr Atheroscler Rep* 8: 119–130.
2. **Mehra MR** (2006) Contemporary concepts in prevention and treatment of cardiac allograft vasculopathy. *Am J Transplant* 6: 1248–1256.
3. **Labarrere C, Lee J, Nelson D, Al-Hassani M, Miller S, et al.** (2002) Elevated levels of C-reactive protein are associated with arterial endothelial activation and development of transplant coronary artery disease. *Lancet* 360: 1462–1467.
4. **Labarrere CA, Nelson DR, Faulk WP** (1997) Endothelial activation and development of coronary artery disease in transplanted human hearts. *JAMA* 278: 1169–1175.
5. **Labarrere CA, Nelson DR, Miller SJ, Nieto JM, Conner JA, et al.** (2000) Value of serum-soluble intercellular adhesion molecule-1 for the noninvasive risk assessment of transplant coronary artery disease, posttransplant ischemic events, and cardiac graft failure. *Circulation* 102: 1549–1555.
6. **Labarrere CA, Nelson DR, Cox CJ, Pitts D, Kirlin P, et al.** (2000) Cardiac-specific troponin I levels and risk of coronary artery disease and graft failure following heart transplantation. *JAMA* 284: 457–464.
7. **Labarrere CA, Nelson DR, Faulk WP** (1998) Myocardial fibrin deposits in the first month after transplantation predict subsequent coronary artery disease and graft failure in cardiac allograft recipients. *Am J Med* 105: 207–213.
8. **Labarrere CA, Torry RJ, Nelson DR, Miller SJ, Pitts DE, et al.** (2001) Vascular antithrombin and clinical outcome in heart transplant patients. *Am J Cardiol* 87: 425–431.
9. **Labarrere CA, Pitts D, Nelson DR, Faulk WP** (1995) Vascular tissue plasminogen activator and the development of coronary artery disease in heart-transplant recipients. *N Engl J Med* 333: 1111–1116.
10. **Labarrere CA, Woods JR, Hardin JW, Campana GL, Ortiz MA, et al.** (2012) Value of the first post-transplant biopsy for predicting long-term cardiac allograft vasculopathy (CAV) and graft failure in heart transplant patients. *PLoS ONE* 7: e36100.
11. **Labarrere CA, Woods JR, Hardin JW, Campana G, Ortiz MA, et al.** (2011) Early Prediction of Cardiac Allograft Vasculopathy and Heart Transplant Failure. *Am J Transplant* 11: 528–535.
12. **Pethig K, Heublein B, Kutschka I, Haverich A** (2000) Systemic inflammatory response in cardiac allograft vasculopathy: high-sensitive C-reactive protein is associated with progressive luminal obstruction. *Circulation* 102: III233–236.
13. **Pencina MJ, D'Agostino RB Sr, D'Agostino RB Jr, Vasan RS** (2008) Evaluating the added predictive ability of a new marker: from area under the ROC curve to reclassification and beyond. *Stat Med* 27: 157–172; discussion 207–112.
14. **Efron B** (1979) Bootstrap methods: Another look at the jackknife. *Annals of Statistics* 7: 1–26.
15. **Schisterman EF, Perkins NJ, Liu A, Bondell H** (2005) Optimal cut-point and its corresponding Youden Index to discriminate individuals using pooled blood samples. *Epidemiology* 16: 73–81.
16. **Hanley JA, McNeil BJ** (1982) The meaning and use of the area under a receiver operating characteristic (ROC) curve. *Radiology* 143: 29–36.
17. **Wang TJ, Gona P, Larson MG, Tofler GH, Levy D, et al.** (2006) Multiple biomarkers for the prediction of first major cardiovascular events and death. *The New England Journal of Medicine* 355: 2631–2639.
18. **Pepe MS, Janes H, Longton G, Leisenring W, Newcomb P** (2004) Limitations of the odds ratio in gauging the performance of a diagnostic, prognostic, or screening marker. *American journal of epidemiology* 159: 882–890.
19. **Shah PK** (2000) Circulating markers of inflammation for vascular risk prediction: are they ready for prime time. *Circulation* 101: 1758–1759.
20. **Koenig W, Sund M, Frohlich M, Fischer HG, Lowel H, et al.** (1999) C-Reactive protein, a sensitive marker of inflammation, predicts future risk of coronary heart disease in initially healthy middle-aged men: results from the MONICA (Monitoring Trends and Determinants in Cardiovascular Disease) Augsburg Cohort Study, 1984 to 1992. *Circulation* 99: 237–242.

21. **Ridker PM, Cushman M, Stampfer MJ, Tracy RP, Hennekens CH** (1997) Inflammation, aspirin, and the risk of cardiovascular disease in apparently healthy men. *N Engl J Med* 336: 973–979.
22. **Ridker PM, Cushman M, Stampfer MJ, Tracy RP, Hennekens CH** (1998) Plasma concentration of C-reactive protein and risk of developing peripheral vascular disease. *Circulation* 97: 425–428.
23. **Ridker PM, Glynn RJ, Hennekens CH** (1998) C-reactive protein adds to the predictive value of total and HDL cholesterol in determining risk of first myocardial infarction. *Circulation* 97: 2007–2011.
24. **Ridker PM, Buring JE, Shih J, Matias M, Hennekens CH** (1998) Prospective study of C-reactive protein and the risk of future cardiovascular events among apparently healthy women. *Circulation* 98: 731–733.
25. **Biasucci LM, Liuzzo G, Grillo RL, Caligiuri G, Rebuzzi AG, et al.** (1999) Elevated levels of C-reactive protein at discharge in patients with unstable angina predict recurrent instability. *Circulation* 99: 855–860.
26. **Haverkate F, Thompson SG, Pyke SD, Gallimore JR, Pepys MB** (1997) Production of C-reactive protein and risk of coronary events in stable and unstable angina. European Concerted Action on Thrombosis and Disabilities Angina Pectoris Study Group. *Lancet* 349: 462–466.
27. **Liuzzo G, Biasucci LM, Gallimore JR, Grillo RL, Rebuzzi AG, et al.** (1994) The prognostic value of C-reactive protein and serum amyloid A protein in severe unstable angina. *N Engl J Med* 331: 417–424.
28. **Rebuzzi AG, Quaranta G, Liuzzo G, Caligiuri G, Lanza GA, et al.** (1998) Incremental prognostic value of serum levels of troponin T and C-reactive protein on admission in patients with unstable angina pectoris. *Am J Cardiol* 82: 715–719.
29. **Thompson SG, Kienast J, Pyke SD, Haverkate F, van de Loo JC** (1995) Hemostatic factors and the risk of myocardial infarction or sudden death in patients with angina pectoris. European Concerted Action on Thrombosis and Disabilities Angina Pectoris Study Group. *N Engl J Med* 332: 635–641.
30. **Ridker PM, Rifai N, Pfeffer MA, Sacks FM, Moye LA, et al.** (1998) Inflammation, pravastatin, and the risk of coronary events after myocardial infarction in patients with average cholesterol levels. Cholesterol and Recurrent Events (CARE) Investigators. *Circulation* 98: 839–844.
31. **Labarrere CA, Zaloga GP** (2004) C-reactive protein: from innocent bystander to pivotal mediator of atherosclerosis. *Am J Med* 117: 499–507.
32. **Pasceri V, Willerson JT, Yeh ET** (2000) Direct proinflammatory effect of C-reactive protein on human endothelial cells. *Circulation* 102: 2165–2168.
33. **Singh U, Devaraj S, Jialal I** (2005) C-reactive protein decreases tissue plasminogen activator activity in human aortic endothelial cells: evidence that C-reactive protein is a procoagulant. *Arterioscler Thromb Vasc Biol* 25: 2216–2221.
34. **Eisenberg MS, Chen HJ, Warshofsky MK, Sciacca RR, Wasserman HS, et al.** (2000) Elevated levels of plasma C-reactive protein are associated with decreased graft survival in cardiac transplant recipients. *Circulation* 102: 2100–2104.
35. **Kerr R, Stirling D, Ludlam CA** (2001) Interleukin 6 and haemostasis. *British journal of haematology* 115: 3–12.
36. **Christenson RH, deFilippi CP, Kreutzer D** (2005) Biomarkers of ischemia in patients with known coronary artery disease: do interleukin-6 and tissue factor measurements during dobutamine stress echocardiography give additional insight? *Circulation* 112: 3215–3217.
37. **Ikonomidis I, Athanassopoulos G, Lekakis J, Venetsanou K, Marinou M, et al.** (2005) Myocardial ischemia induces interleukin-6 and tissue factor production in patients with coronary artery disease: a dobutamine stress echocardiography study. *Circulation* 112: 3272–3279.
38. **Wung BS, Hsu MC, Wu CC, Hsieh CW** (2005) Resveratrol suppresses IL-6-induced ICAM-1 gene expression in endothelial cells: effects on the inhibition of STAT3 phosphorylation. *Life Sciences* 78: 389–397.
39. **Wung BS, Ni CW, Wang DL** (2005) ICAM-1 induction by TNF α and IL-6 is mediated by distinct pathways via Rac in endothelial cells. *Journal of biomedical science* 12: 91–101.
40. **Hognestad A, Endresen K, Wergeland R, Stokke O, Geiran O, et al.** (2003) Plasma C-reactive protein as a marker of cardiac allograft vasculopathy in heart transplant recipients. [comment]. *J Am Coll Cardiol* 42: 477–482.

41. **Gullestad L, Simonsen S, Ueland T, Holm T, Aass H, et al.** (1999) Possible role of proinflammatory cytokines in heart allograft coronary artery disease. *American Journal of Cardiology* 84: 999–1003.
42. **Lowé GD, Pepys MB** (2006) C-reactive protein and cardiovascular disease: weighing the evidence. *Current atherosclerosis reports* 8: 421–428.
43. **Ventura HO, Mehra MR** (2003) C-Reactive protein and cardiac allograft vasculopathy. is inflammation the critical link? *J Am Coll Cardiol* 42: 483–485.
44. **Schmauss D, Weis M** (2008) Cardiac allograft vasculopathy: recent developments. *Circulation* 117: 2131–2141.
45. **Harrell F Jr** (2001) Regression modeling strategies: with applications to linear models, logistic regression, and survival analysis. New York: Springer.
46. **Pepys MB, Hirschfield GM, Tennent GA, Gallimore JR, Kahan MC, et al.** (2006) Targeting C-reactive protein for the treatment of cardiovascular disease. *Nature* 440: 1217–1221.
47. **Labarrere CA, Pitts D, Halbrook H, Faulk WP** (1994) Tissue plasminogen activator, plasminogen activator inhibitor-1, and fibrin as indexes of clinical course in cardiac allograft recipients. An immunocytochemical study. *Circulation* 89: 1599–1608.
48. **Labarrere CA, Pitts D, Nelson DR, Faulk WP** (1995) Coronary artery disease in cardiac allografts: association with arteriolar endothelial HLA-DR and ICAM-1 antigens. *Transplant Proc* 27: 1939–1940.
49. **Faria-Neto JR, Chyu KY, Li X, Dimayuga PC, Ferreira C, et al.** (2006) Passive immunization with monoclonal IgM antibodies against phosphorylcholine reduces accelerated vein graft atherosclerosis in apolipoprotein E-null mice. *Atherosclerosis* 189: 83–90.
50. **Ajeganova S, de Faire U, Jogestrand T, Frostegard J, Hafstrom I** (2012) Carotid atherosclerosis, disease measures, oxidized low-density lipoproteins, and atheroprotective natural antibodies for cardiovascular disease in early rheumatoid arthritis – an inception cohort study. *J Rheumatol* 39: 1146–1154.
51. **Anania C, Gustafsson T, Hua X, Su J, Vikstrom M, et al.** (2010) Increased prevalence of vulnerable atherosclerotic plaques and low levels of natural IgM antibodies against phosphorylcholine in patients with systemic lupus erythematosus. *Arthritis Res Ther* 12: R214.
52. **Caligiuri G, Khallou-Laschet J, Vandaele M, Gaston AT, Delignat S, et al.** (2007) Phosphorylcholine-targeting immunization reduces atherosclerosis. *J Am Coll Cardiol* 50: 540–546.
53. **de Faire U, Frostegard J** (2009) Natural antibodies against phosphorylcholine in cardiovascular disease. *Ann N Y Acad Sci* 1173: 292–300.
54. **de Faire U, Su J, Hua X, Frostegard A, Halldin M, et al.** (2010) Low levels of IgM antibodies to phosphorylcholine predict cardiovascular disease in 60-year old men: effects on uptake of oxidized LDL in macrophages as a potential mechanism. *J Autoimmun* 34: 73–79.
55. **Lewis MJ, Malik TH, Ehrenstein MR, Boyle JJ, Botto M, et al.** (2009) Immunoglobulin M is required for protection against atherosclerosis in low-density lipoprotein receptor-deficient mice. *Circulation* 120: 417–426.