



Range reduction of Oblong Rocksnail, *Leptoxis compacta*, shapes riverscape genetic patterns

Aaliyah D. Wright¹, Nicole L. Garrison^{2,3}, Ashantye S. Williams⁴, Paul D. Johnson⁵ and Nathan V. Whelan^{2,4}

¹Tuskegee University, Tuskegee, AL, United States of America

²School of Fisheries, Aquaculture, and Aquatic Sciences, College of Agriculture, Auburn University, Auburn, AL, United States of America

³Department of Natural Resources and Mathematics, West Liberty University, West Liberty, WV, United States of America

⁴Southeast Conservation Genetics Lab, Warm Springs Fish Technology Center, United States Fish and Wildlife Service, Auburn, AL, United States of America

⁵Alabama Aquatic Biodiversity Center, Alabama Department of Conservation and Natural Resources, Marion, AL, United States of America

ABSTRACT

Many freshwater gastropod species face extinction, including 79% of species in the family Pleuroceridae. The Oblong Rocksnail, *Leptoxis compacta*, is a narrow range endemic pleurocerid from the Cahaba River basin in central Alabama that has seen rapid range contraction in the last 100 years. Such a decline is expected to negatively affect genetic diversity in the species. However, precise patterns of genetic variation and gene flow across the restricted range of *L. compacta* are unknown. This lack of information limits our understanding of human impacts on the Cahaba River system and Pleuroceridae. Here, we show that *L. compacta* has likely seen a species-wide decline in genetic diversity, but remaining populations have relatively high genetic diversity. We also report a contemporary range extension compared to the last published survey. Our findings indicate that historical range contraction has resulted in the absence of common genetic patterns seen in many riverine taxa like isolation by distance as the small distribution of *L. compacta* allows for relatively unrestricted gene flow across its remaining range despite limited dispersal abilities. Two collection sites had higher genetic diversity than others, and broodstock sites for future captive propagation and reintroduction efforts should utilize sites identified here as having the highest genetic diversity. Broadly, our results support the hypothesis that range contraction will result in the reduction of species-wide genetic diversity, and common riverscape genetic patterns cannot be assumed to be present in species facing extinction risk.

Subjects Conservation Biology, Genetics, Genomics, Zoology, Freshwater Biology

Keywords Pleuroceridae, Conservation genomics, Cahaba River, Alabama, Narrow-range endemic, Water quality, Habitat suitability, Wahlund effect, Gastropoda, Freshwater snails

INTRODUCTION

Freshwater gastropods of the United States suffer one of the highest imperilment rates of any taxonomic group in North America (*Johnson et al., 2013*). Despite being critical components of many freshwater ecosystems, freshwater gastropods are grossly

Submitted 13 May 2020
Accepted 31 July 2020
Published 1 September 2020

Corresponding authors
Aaliyah D. Wright,
awright1863@tuskegee.edu
Nathan V. Whelan,
nathan_whelan@fws.gov

Academic editor
Rodolfo Jaffé

Additional Information and
Declarations can be found on
page 14

DOI 10.7717/peerj.9789

© Copyright
2020 Wright et al.

Distributed under
Creative Commons CC-BY 4.0

OPEN ACCESS

understudied compared to freshwater fish, mussels, and crayfish (Covich, Palmer & Crowl, 1999; Huryn, Benke & Ward, 1995; Strong et al., 2008). This creates a situation where desperately needed conservation efforts are hindered by a lack of information (Johnson et al., 2013). For example, data on the current range of many freshwater gastropods is lacking (Lydeard et al., 2004), but conservation assessments and effective management plans require detailed historical and contemporary range data (Potter & Thomas, 1983; National Marine Fisheries Service, 2018). Population genetics data on freshwater gastropods are also needed to inform management efforts and provide basic understanding of freshwater ecosystems (Lysne et al., 2008).

The freshwater gastropod family Pleuroceridae is one group that suffers from a high imperilment rate (79%) and little research attention (Brown, Lang & Perez, 2008; Johnson et al., 2013; Perez & Minton, 2008). Pleurocerids are found east of the Rocky Mountains in North America, with most of their diversity concentrated in the southeastern United States (Lydeard & Mayden, 1995; Strong & Köhler, 2009). Pleurocerids lack a highly vagile veliger larval stage seen in many aquatic gastropod groups, and they are thought to move large distances only when washed downstream (Whelan et al., 2019; Whelan, Johnson & Harris, 2015). Only one study has been published on landscape and conservation genomics of pleurocerids, and that study focused exclusively on a single species, *Leptoxis ampla* (Whelan et al., 2019). Many freshwater species, including *L. ampla*, display common riverscape genetic patterns such as increased genetic diversity in downstream populations and isolation by distance (Hughes, Schmidt & Finn, 2009; Paz-Vinas et al., 2015). However, few studies have tested for such patterns in riverine species that have undergone drastic range reduction, and no such study has been done for a range restricted pleurocerid.

One pleurocerid in desperate need of more research is the Oblong Rocksnail, *Leptoxis compacta* (Figs. 1 and 2). This species is a narrow range endemic known historically from the middle Cahaba River and a single tributary in central Alabama, USA (Fig. 3; Goodrich, 1922). Until recently, *Leptoxis compacta* was considered extinct as it had not been collected, or at least identified correctly, from 1935 to 2011 (Goodrich, 1941; Johnson et al., 2016; Whelan, Johnson & Harris, 2012). As early as 1941, the decline of *L. compacta* was documented (Goodrich, 1941), and the species now occupies less than 5% of its historical range (Fig. 3; Whelan, Johnson & Harris, 2012). As a narrow range endemic with few historic collections, little is known about the species aside from recent survey efforts and limited life history data (Whelan, Johnson & Harris, 2012). Yet, the rediscovery of *L. compacta* in 2011 resulted in an emergency petition to list the species under the US Endangered Species Act (Kurth, 2017). For management agencies to assess the status of *L. compacta* and design effective conservation plans, detailed survey work and population genetics research are required. Modern population genomic tools such as restriction site associated DNA sequencing (RAD-seq) can provide data that will enhance *L. compacta* management options (Andrews et al., 2016). As a result of having a narrow range along a single river path, an effective recovery strategy for *L. compacta* will likely require reintroduction efforts to previously occupied habitat(s). Maintaining genetic diversity of imperiled species is important for mitigating extinction risk (Frankham, 2005; Frankham,



Figure 1 Photograph of live *L. compacta*. Photo Credit: Thomas Tarpley, ADCNR.

Full-size  DOI: [10.7717/peerj.9789/fig-1](https://doi.org/10.7717/peerj.9789/fig-1)

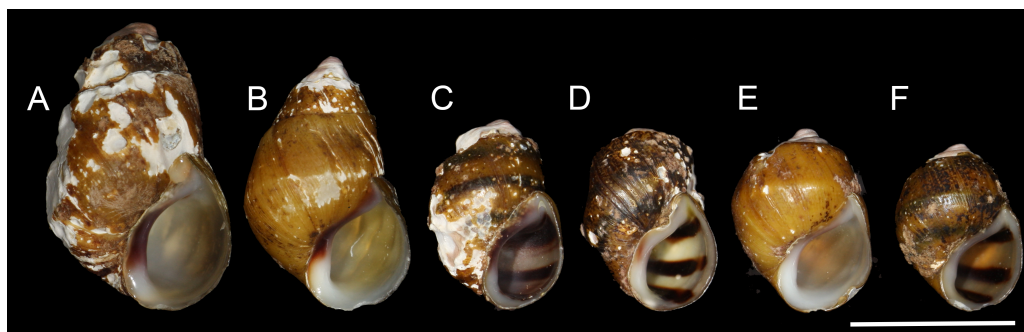


Figure 2 Shells of representative individuals that we sequenced. (A) Cahaba River at Canoe Launch, (B) Cahaba River at Booth's Ford, (C) Cahaba River above Shades Creek, (D–F) Cahaba River at old Marvel slab. Scale bar = 1 cm.

Full-size  DOI: [10.7717/peerj.9789/fig-2](https://doi.org/10.7717/peerj.9789/fig-2)

2010), and reintroduction efforts will require detailed population genetics data to inform broodstock selection for maximizing heterogeneity of captive reared offspring.

In this study, we used 2bRAD-seq (Wang *et al.*, 2012) to generate a dataset of thousands of single nucleotide polymorphisms (SNPs) to answer questions about conservation and riverscape genetics of *L. compacta*. Given the drastic range decline suffered by *L. compacta*, we set out to test the following hypotheses: (1) *Leptoxis compacta* has undergone a severe

genetic bottleneck and (2) genetic diversity of *L. compacta* is considerably lower than *L. ampla*, a sympatric and wider ranging species. We also examined how genetic diversity of *L. compacta* varies across its current range, specifically assessing whether broad patterns seen in many other riverine taxa like isolation by distance and strong genetic structure are seen in *L. compacta*.

MATERIALS & METHODS

Sample collection

Leptoxis compacta was collected during two trips to the Cahaba River in June 2018 and June 2019. We collected *L. compacta* at four sites, and all sites except Cahaba River above Shades Creek were outside the previously documented contemporary range of *L. compacta* (Fig. 3; Whelan, Johnson & Harris, 2012). At each location, individuals were collected by hand and identified in the field. Despite being a narrow range endemic that has undergone distributional decline, *L. compacta* was locally abundant where found. Based on qualitative observations, we sampled less than 1% of the population, making our sampling negligible to species survival. Twenty specimens from each site were transported live to the lab, sacrificed following Fukuda, Haga & Tatara (2008), and placed in 96–100% ethanol until tissue clips could be taken. Specimens were collected under an Alabama Department of Conservation and Natural Resources Educational Scientific Collections Permit (License #2019100990068680) or as an agent of the state (P.D. Johnson). Jecca Shumante and Lauren Allred of Living River: A Retreat on the Cahaba provided access to privately owned sites along the Cahaba River. All shells have been cataloged separately to correspond to associated molecular data and deposited at the Auburn University Museum of Natural History (AUMNH 45652-45690; Table 1, Table S1).

Molecular data generation

Tissue clips from 20 individuals per collection site were taken and subjected to a standard proteinase K digestion. DNA was extracted with the Qiagen DNeasy Plant Mini Kit with a minor modification to allow for tissue digested with proteinase K. We used a plant kit because it works well on freshwater gastropods that produce large amounts of mucus polysaccharides (Whelan et al., 2019). The integrity of whole genomic DNA was checked on a 1% agarose gel and quantified with a Qubit DNA assay. Extracted DNA was standardized to 120 ng/μL for 2bRAD library prep.

A reduced representation genomic library was generated for genotyping using the Alfi enzyme and the 2bRAD library prep protocol of Wang et al. (2012). This RAD-seq approach uses a type IIB restriction enzyme that has two recognition sites. Alfi recognizes two sites separated by six base pairs and makes a cut with a one base pair overhang 12 base pairs from the 5' and 3' ends of the restriction sites. Following Whelan et al. (2019), we did a 1/16th genomic reduction by using adaptors in the ligation step that had an “NC” overlap, thus only binding to Alfi RAD-loci that had a G base pair at the first base pair of each restriction cut overhang. For more details, see Wang et al. (2012) and the lab protocol on the FigShare repository for this study (DOI: [10.6084/m9.figshare.12014619](https://doi.org/10.6084/m9.figshare.12014619)).

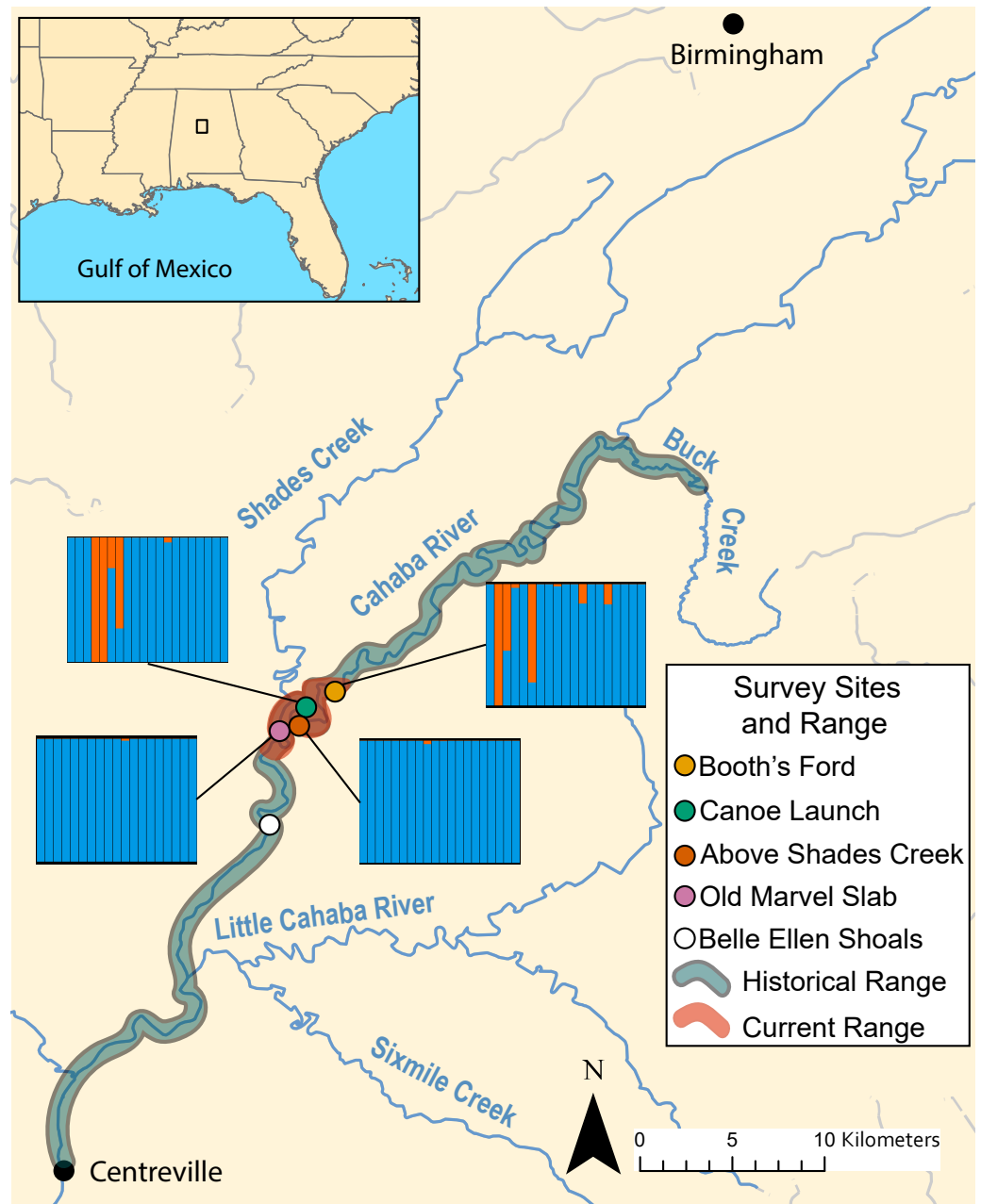


Figure 3 Map of known historical and current range of *L. compacta*, collection sites, and other landmarks. Lines from collection sites lead to ADMIXTURE plots with $K = 2$ for each site. Each column is an individual with ADMIXTURE proportions of the two inferred ancestral populations. No individuals from Belle Ellen Shoals were sequenced (see sample collection results)

Full-size DOI: [10.7717/peerj.9789/fig-3](https://doi.org/10.7717/peerj.9789/fig-3)

All samples were dual-indexed for pooling. Sequencing occurred in multiple batches. The first batch had 48 *L. compacta* samples pooled in equimolar concentrations and sequenced on a single lane. The other individuals were pooled in equimolar concentrations with samples from projects on conservation genomics of other pleurocerid species, and 87

Table 1 Summary statistics and AUMNH catalog numbers of *L. compacta* at each collection site.

Collection site	Private alleles	H _o (sd)	H _e (sd)	A _r (sd)	Π (sd)	F _{IS}	AUMNH #
Cahaba River at Booth's Ford	43	0.1568 (0.1349)	0.1801 (0.1222)	1.8241 (0.2742)	0.1855 (0.1261)	0.1319	45691-45709
Cahaba River at canoe launch	32	0.1046 (0.1552)	0.1045 (0.1421)	1.4511 (0.4518)	0.1075 (0.1459)	0.0134	45710-45729
Cahaba River above Shades Creek	262	0.1363 (0.1334)	0.1779 (0.1245)	1.8072 (0.2883)	0.1829 (0.1281)	0.1934	45671-45690
Cahaba River at Old Marvel Slab	28	0.0963 (0.1400)	0.0981 (0.1343)	1.4606 (0.4387)	0.1010 (0.1382)	0.0226	45652-45670

Notes.

H_o, Observed heterozygosity; H_e, Expected heterozygosity; A_r, Allelic richness; Π, nucleotide diversity.

individuals were sequenced per HiSeq 4000 lane. Although batch effects in RADseq data have been recently noted in studies that used different read lengths among sequencing runs (Leigh, Lischer & Keller, 2018) and in species introgression studies (Lambert et al., 2019), such issues were not relevant to our sequencing design or study objectives. Nevertheless, we took steps to limit potential batch effects by implementing strict filtering parameters during dataset assembly (see below). Pooled libraries were sequenced on an Illumina HiSeq 4000 with 1 × 75 bp chemistry at University of Oregon Genomics and Cell Characterization Core Facility.

Raw Illumina reads were demultiplexed with the STACKS 1.48 (Catchen et al., 2013) module *process_radtags*, allowing for one mismatch per barcode. Demultiplexed reads were quality filtered with the script *QualFilterFastq.pl* (http://github.com/Eli-Meyer/sequence_processing) for any read that had five or more base pairs with Phred quality scores less than 20. Reads were processed with scripts from SHRiMP 2.23 (Rumble et al., 2009) and subsequently trimmed to Alfi RAD-loci with the script *AlfiExtract.pl* (http://github.com/Eli-Meyer/2bRAD_utilities). As this step removes any sequence that is not part of the RAD-locus, adaptor sequences and non-target sequences are removed from the sequencing reads. RAD-loci, defined as the stretch of DNA cut by the Alfi enzyme, were assembled with the STACKS 1.48 pipeline *denovo_map.pl* as no reference genome is available for *L. compacta*. For *denovo_map.pl* parameters, we set minimum stack depth to five (-m 5), distance allowed between stacks to three (-M 3), and distance between catalog RAD-loci to two (-n 2). These parameters were determined to be most appropriate for our data following Paris, Stevens & Catchen (2017). All other *denovo_map.pl* parameters were set to defaults.

After assembly, RAD-loci were filtered for missing data using the STACKS program *populations*. In order to pass filtering steps, a RAD-locus had to be present in 75% of individuals from any given collection site and also present at three collection sites. RAD-loci that had a minimum minor allele frequency of less than 2.5% or heterozygosity higher than 50% were removed to limit the influence of paralogy and misassembly on final datasets. Sequencing coverage of RAD-loci with SNPs was measured with *vcftools* (Jombart & Ahmed, 2011). Kinship coefficients among individuals were inferred with KING (Manichaikul et al., 2010). Files output by STACKS were formatted for KING with PLINK 1.9 (Chang et al., 2015), and pairwise kinship coefficients were calculated with the KING

flag “-kinship”. Given the absence of closely related individuals, no further dataset filtering was done.

After filtering, a dataset that included all SNPs per RAD-locus and a dataset with only one random SNP per RAD-locus were generated. We assume that RAD-loci are unlinked and that the one SNP per RAD-locus dataset had zero linkage disequilibrium. Analyses employed the one SNP per RAD-locus dataset, unless otherwise noted.

Population genetics analyses

Average observed heterozygosity (H_o), expected heterozygosity (H_e), nucleotide diversity (Π), and F_{IS} at each collection site were calculated by *populations*. The number of private alleles at each site was also reported by *populations*. Average allelic richness (A_r) was calculated with the R (*R Core Team, 2020*) package *diveRsity* (*Keenan et al., 2013*). An analysis of molecular variance (AMOVA; *Excoffier, Smouse & Quattro, 1992*) was done with the R packages *poppr* (*Kamvar, Tabima & Grünwald, 2014*) to test genetic structure among collection sites. AMOVA was implemented with the function “*poppr.amova*” using the *ade4* method (*Dray & Dufour, 2007*) and 10,000 permutations.

We also tested for a pattern of isolation by distance by measuring the correlation between pairwise F_{ST} values and geographical distance between collection sites. Pairwise F_{ST} values were calculated using the *Weir & Cockerham (1984)* method with the R package *hierfstat* (*Goudet, 2005*). Stream distance was measured in Google Earth by tracing paths between collection sites along the Cahaba River (see [Table 2](#)). River distance was used, rather than straight line distances, because migration over land is impossible for gill breathing pleurocerids. A Mantel test was performed with the R package *ade4* (*Dray & Dufour, 2007*), and significance was tested with 1,000 permutations. However, Mantel tests have been criticized as a method for testing isolation by distance (*Legendre, Fortin & Borcard, 2015; Meirmans, 2015*), so we also performed a multiple regression on distance matrices with 1,000 permutations using the R package *ecodist* and its *MRM* function (*Goslee & Urban, 2007*). In addition to a pattern of isolation by distance, past studies have shown that many freshwater organisms, including pleurocerids, display a pattern of increased genetic diversity in more downstream populations (*Paz-Vinas et al., 2015; Whelan et al., 2019*). Therefore, to better assess riverscape genetic patterns of *L. compacta*, we performed linear regression of distance from the most downstream site against H_o , H_e , A_r , and Π . Linear regressions were done in R.

We examined clustering of *L. compacta* genetic data with discriminant analysis of principal components (DAPC). We used the multiple SNPs per RAD-locus dataset and the R package *adegenet* (*Jombart & Ahmed, 2011*) to perform DAPC. We first used the *adegenet* function “*find.clusters*” testing up to 25 clusters and using Bayesian information criteria (BIC) to identify the best-fit number of clusters for our data. Using the number of clusters with the lowest BIC value, we performed a DAPC with the *adegenet* function “*dapc*” and plotted the results in R.

We inferred genomic admixture of *L. compacta* individuals with ADMIXTURE 1.3 (*Shringarpure et al., 2016*). ADMIXTURE assumes zero linkage disequilibrium, so we used the one SNP per RAD-locus dataset. ADMIXTURE analyses were run with the *AdmixPipe*

Table 2 Pairwise F_{st} and distances (km) between sites. F_{st} below diagonal and distances above diagonal.

	Booth's Ford	Canoe launch	Above Shades Creek	Old Marvel slab
Cahaba River at Booth's Ford	–	4.62	5.55	9.2
Cahaba River at canoe launch	0.04	–	0.98	4.57
Cahaba River above Shades Creek	0	0.05	–	3.64
Cahaba River at old Marvel slab	0.03	0.04	0.03	–

pipeline (Mussman *et al.*, 2020). To determine the best-fit number of clusters (K) for our data, K values from 1 to 5 were assessed with 20% cross-validation. Twenty replicates of ADMIXTURE were run at each K, and the best-fit K was determined as the value that had the lowest average CV score across replicates. ADMIXTURE results were visualized with Clumpak (Kopelman *et al.*, 2015).

Genomic co-ancestry among individuals was also assessed with fineRADstructure (Malinsky *et al.*, 2018). Unlike ADMIXTURE, fineRADstructure can use linked SNPs and provides additional information on individual genomic background. Thus, the multiple SNPs per RAD-locus dataset was used for fineRADstructure analyses. First, a co-ancestry matrix was inferred with the script RADpainter. Subsequently, clustering was done with the Markov chain Monte Carlo method of fineRADstructure, running for 500,000 generations and sampling every 1,000 generations; the first 200,000 generations were discarded as burn-in (non-default parameters: -x 200000 -y 300000 -z 1000). We also inferred a tree for visualization with fineRADstructure using the tree-building algorithm of Lawson *et al.* (2012) with 10,000 attempts (non-default parameters: -m T -x 10000). fineRADstructure results were plotted with R scripts included in the fineRADstructure package.

Code and data availability

All bash and R scripts used for processing and analyzing data are available at github.com/nathanwhelan. Demultiplexed raw Illumina reads have been uploaded to NCBI under BioProject [PRJNA631794](https://www.ncbi.nlm.nih.gov/bioproject/PRJNA631794). Assembled datasets in various file formats (e.g., vcf, genepop) and the 2bRAD library prep protocol are available on FigShare (DOI: [10.6084/m9.figshare.12014619](https://doi.org/10.6084/m9.figshare.12014619)).

RESULTS

Sample collection

During survey work, we collected *L. compacta* from Cahaba River at old Marvel slab upstream to Cahaba River at Booth's Ford (Fig. 3). All sites except Cahaba River at Shades Creek are sites where *L. compacta* was not found during survey work over the last 30 years. Our collections represents a 1.83 km downstream range extension and a 4.76 km upstream extension compared to the previously documented contemporary range of *L. compacta* (Whelan, Johnson & Harris, 2012). While this study was ongoing, 3 putative *L. compacta* individuals were collected at Cahaba River at Belle Ellen Shoals (Fig. 3) during a general mollusk survey (Johnson, 2019). However, species identification was uncertain and

L. compacta appeared exceedingly rare. Therefore, individuals from Cahaba River at Belle Ellen Shoals were not included in our analyses, and we consider this record unconfirmed without additional positive survey results.

Molecular data and population genetics

DNA yields for two individuals were too low for library preparation so only 19 individuals were sequenced from Cahaba River at old Marvel Slab and Cahaba River at Booth's Ford. The number of demultiplexed raw reads per individuals varied from 930,062–10,146,649 (mean = 4,836,812). Much of the variation in raw reads can be attributed to whether the individual was sequenced on a HiSeq 4000 lane with 48 or 87 samples. Aside from raw read number, we saw no evidence of batch affects like individuals from one sequencing run all clustering together in analyses (see below). After initial raw read filtering, the number of reads that passed quality filtering steps ranged from 865,314–9,838,187 (mean = 4,632,510). Assembly with the STACKS *denovo_map* pipeline resulted in 105,542 RAD-loci. Filtering with *populations*, including removal of 4,009 invariant RAD-loci that passed all filters, resulted in a dataset with 4,962 RAD-loci with at least one SNP. Per individual average sequencing coverage of filtered RAD-loci with at least one SNP, excluding missing genotypes, ranged from 31.7–343.2. Average sequencing coverage across variable RAD-loci, excluding missing genotypes, was 163.7. Kinship coefficients inferred with KING indicated that no individuals were closely related (i.e., half or full siblings).

The number of private alleles at each site ranged from 28–262 (Table 1). H_o at each collection site ranged from 0.0963–0.1568, and H_e ranged from 0.0980 to 0.1801 (Table 1). At each site, H_o was lower than H_e , except at Cahaba River at canoe launch where H_o was 0.001 greater than H_e (Table 1). The difference between H_o and H_e was largest at Cahaba River above Shade Creek and Cahaba River at Booth's Ford. A_r and Π ranged from 1.4511–1.8241 and 0.1010–0.1829, respectively (Table 1). F_{IS} values ranged from 0.0134–0.1934 (Table 1), with the highest values being at Cahaba River above Shades Creek and Cahaba River at Booth's Ford. Overall, genetic diversity was greatest at the most upstream site, Cahaba River at Booth's Ford, and lowest at the most downstream site, Cahaba River at old Marvel slab. All linear regressions of diversity statistics vs distance from the most downstream site were non-significant ($p \geq 0.169$).

Pairwise F_{ST} values among sites ranged from 0.0–0.055 (Table 2). We found no evidence of an isolation by distance pattern among sites (Mantel test, $p = 0.843$; multiple regression, $p = 0.428$). According to the AMOVA, significant genetic structure was present among collection sites ($p = 0.004$), but only 4.16% of variation was explained by collection site. In contrast, 81.8% of genetic variation was explained by within individual variation, further indicating high amounts of gene flow among collection sites.

DAPC indicated two genetic clusters were present in our data. Data were explained by a single discriminate function, and results are therefore presented as a frequency histogram (Fig. 4). ADMIXTURE analyses indicated that genetic diversity from two ancestral populations were present in our data ($K = 2$). Most individuals from across the range of *L. compacta* had a genomic admixture profile that was dominated by a genomic background from a single ancestral population, likely indicating that overall genomic diversity has

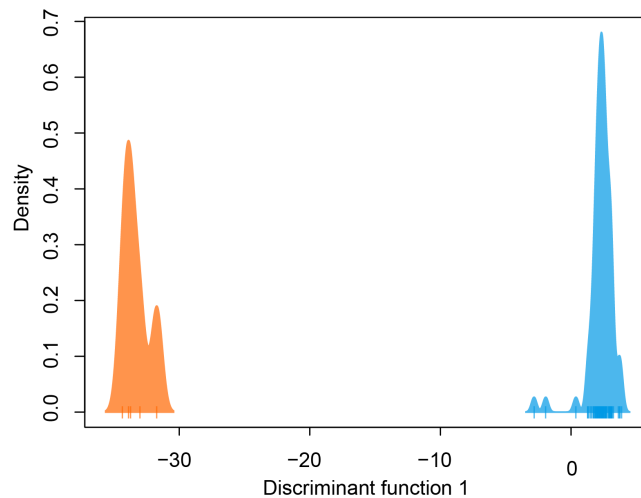


Figure 4 DAPC plot colored by genetic cluster. Tick marks on x -axis represent individuals.

Full-size  DOI: [10.7717/peerj.9789/fig-4](https://doi.org/10.7717/peerj.9789/fig-4)

been lost across the range of *L. compacta*. Nevertheless, 14 individuals had varying levels of admixture with a second ancestral population (Fig. 3). fineRADstructure analyses corroborated ADMIXTURE analyses as two semi-distinct groupings were recovered by fineRADstructure (Fig. 5, Fig. S1). fineRADstructure groupings did not correspond to collection site or any other obvious variable, indicating gene flow among collection sites. Notably, six individuals with comparably high co-ancestry proportions (upper right of co-ancestry matrix in Fig. 5) correspond to individuals in ADMIXTURE analyses with a large proportion of genetic background from the less common ancestral population (represented by orange in Fig. 3).

DISCUSSION

Our findings provide reasons to be optimistic about the survival of *L. compacta*. Despite a drastic range reduction in the last 120 years, we found *L. compacta* more widespread than documented in other recent surveys. Furthermore, the remaining sites where *L. compacta* occurs retain a relatively high amount of genetic diversity. Across its range, *L. compacta* had similar levels of H_0 and Π to *L. ampla*, a species that is currently found across the historical range of *L. compacta* and in some tributaries like Shades Creek and Little Cahaba River (Whelan et al., 2019). The lowest genetic diversity values observed for *L. compacta* were greater than the lowest values determined for *L. ampla*. This observation rejects one of our main hypotheses that *L. compacta* would have lower genetic diversity than the more widespread *L. ampla*. Nevertheless, *L. compacta* is restricted to a 9.2 km stretch of river, and *L. compacta* has likely lost range-wide genetic diversity. This probable loss of evolutionary potential could be detrimental to the long-term survival of the species.

Observed *L. compacta* genetic patterns often conflicted with predictions made by broad-scale hypotheses about riverscape genetics. For example, we did not see an isolation by distance pattern, which is common among freshwater taxa (Hughes, Schmidt & Finn,

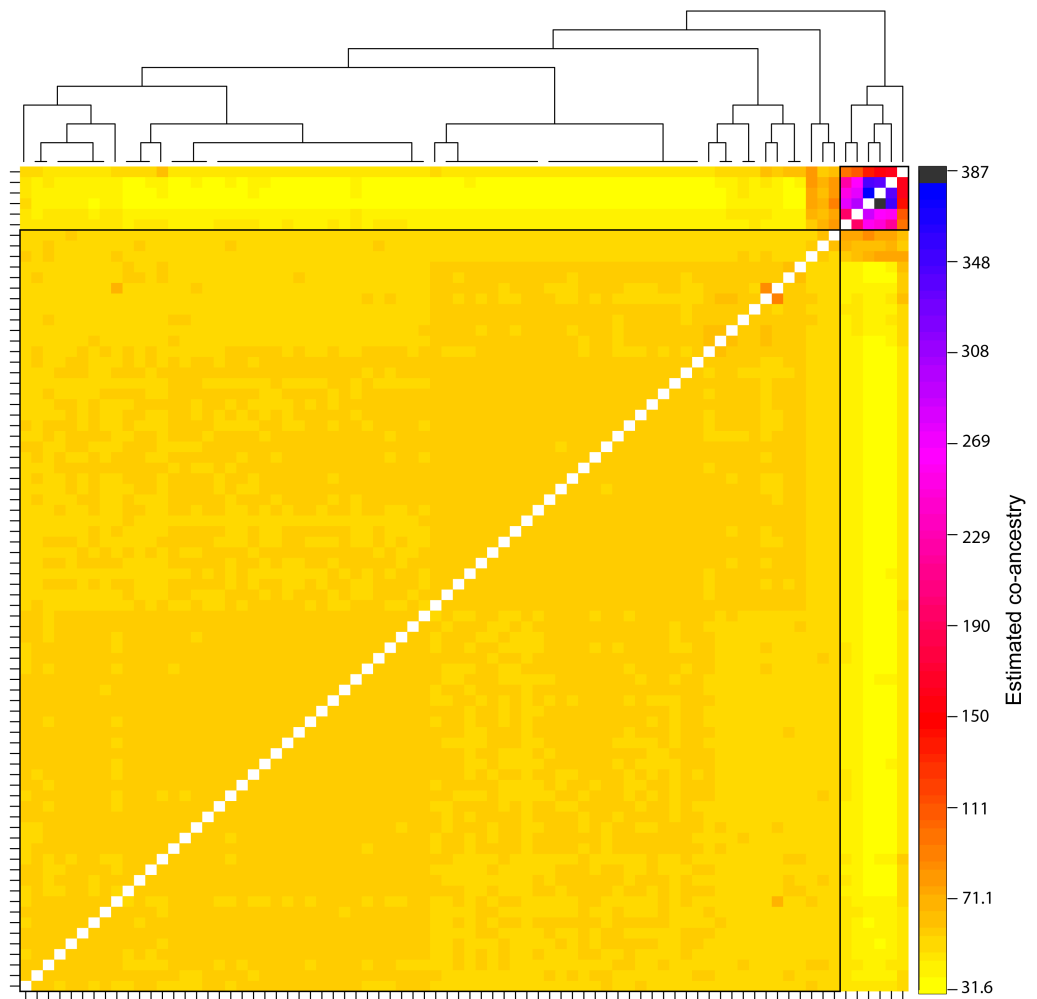


Figure 5 Pairwise co-ancestry matrix and simple tree inferred with fineRADstructure. Boxes surround the two main groupings. Tick marks represent individuals, but labels have been removed for visualization. For a figure with full taxon labels, see Fig. S1.

Full-size  DOI: [10.7717/peerj.9789/fig-5](https://doi.org/10.7717/peerj.9789/fig-5)

2009) and was documented in *L. ampla* (Whelan *et al.*, 2019). We also did not uncover a pattern of increased genetic diversity in downstream populations, despite such a pattern being present in numerous plants and animals (Paz-Vinas *et al.*, 2015), including *L. ampla* (Whelan *et al.*, 2019). Patterns determined for *L. compacta* are likely explained by a drastic range reduction and the limited scale at which we performed the current study. That is, gene flow across the 9.2 km contemporary range of *L. compacta* likely explains observed patterns of riverscape genetic diversity.

Genetic diversity across a small landscape

The two most distant collection sites in this study were separated by a smaller distance (9.2 km) than all but two sites sampled for *L. ampla* in a previous study (Whelan *et al.*, 2019). Therefore, it is difficult to make direct comparisons between genetic patterns of *L. ampla* and *L. compacta*. However, we can leverage differences in geographical scale

between the two studies to make inferences about fine-scale versus long-distance genetic patterns in pleurocerids. F_{ST} values among *L. compacta* collection sites (Table 2) were much lower than values determined for populations of *L. ampla* (F_{ST} 0.377–0.773; Whelan et al., 2019). Furthermore, even though AMOVA indicated significant genetic structure among *L. compacta* collection sites, the small amount of genetic variation that is explained by collection site probably limits its biological relevance. Overall, these data indicate that pleurocerid riverscape genetic patterns across small distances will not always follow common patterns such as isolation by distance and increased genetic diversity at more downstream collection sites. This is likely attributable to gene flow and random drift that prevent the establishment of genetic patterns typically seen across more geographically separated collection sites. From a historical standpoint, we hypothesize that *L. compacta* previously displayed an isolation by distance pattern across its range, similar to the patterns determined for *L. ampla* (Whelan et al., 2019). We think this scenario is likely given limited dispersal abilities of pleurocerids and patterns established for *L. ampla*, a species that retains a much larger portion of its historic range in the Cahaba River drainage than *L. compacta*. Whether or not there was a similar historical pattern of increased genetic diversity in downstream populations of *L. compacta* is more difficult to infer, as such a pattern may not be influenced solely by dispersal ability.

Given the well-documented decline of *L. compacta*, a small number of individuals with a less common genomic background suggests that the species has lost genetic diversity through bottleneck and drift. Patterns seen in DAPC, ADMIXTURE, and fineRADstructure were not driven by geography as individuals with the less common genomic background were not found in adjacent sites (orange in DAPC and ADMIXTURE plots and upper right corner of fineRADstructure plot; Figs. 3–5, Fig. S1). Although individuals with some admixture from the uncommon ancestral population may be present in unsampled individuals at Cahaba River at old Marvel slab and Cahaba River at canoe launch, they would be uncommon. Recent migration is an unlikely explanation of observed co-ancestry profiles as it would indicate that a sizeable population of *L. compacta* would have to exist elsewhere in the Cahaba River. The most likely hypothesis for explaining observed clustering and co-ancestry profiles (Figs. 3–5) is a genetic bottleneck resulting from species decline in the 20th century. In this scenario, *L. compacta* was genetically diverse across its historical range prior to decline, but range contraction caused a considerable loss of genetic diversity. In turn, genetic drift resulted in the observed coancestry pattern of one ancestral population being more common in extant individuals (Figs. 3 and 5).

Broadly, genetic structure across the current range of *L. compacta* can be characterized by a single population with some subpopulation structure at Cahaba River above Shades Creek and Cahaba River at Booth's Ford (Figs. 3–5; Fig. S1). The subpopulation structure appears to be causing a Wahlund effect (Wahlund, 1928). That is, the Wahlund effect predicts the lower H_o values compared to H_e values and the higher F_{IS} values seen in collection sites with inferred subpopulation structure (Fig. 3; Table 2). An alternative explanation for the observed pattern of F_{IS} and H_e is null alleles. However, null alleles are unlikely as they would increase pairwise F_{ST} values (De Meeûs, 2018) that are uniformly low across populations (Table 2). Despite the putative presence of a Wahlund effect, Cahaba

River above Shades Creek and Cahaba River at Booth's Ford have greater genomic diversity than the two other sites (Table 1; Figs. 3–5). These sites may have better habitat suitability than the other two, allowing for *L. compacta* to persist with greater genetic diversity as the species declined in the 20th century.

Conservation of *Leptoxis compacta*

Leptoxis compacta suffered a massive decline during the 20th century, a period of intense mining, forestry, and urban development in the Cahaba River drainage (Onorato, Angus & Marion, 2000; Pitt, 2000; Shepard et al., 1994; Tolley-Jordan, Huryn & Bogan, 2015). The decline was so drastic that *L. compacta* was considered extinct less than a decade ago. Fortunately, *L. compacta* is not extinct. However, conservation efforts are needed to ensure the long-term survival of *L. compacta* as the species is at risk from both chronic habitat degradation and one-time catastrophic events. Two potential management strategies for *L. compacta* are habitat restoration and reintroduction with captive reared individuals.

In this study, we report an 8.26 km known range extension for *L. compacta*. One site, Cahaba River at old Marvel Slab, was previously the focus of intense habitat restoration through the removal of a low-level dam (Johnson et al., 2013). The site may have also benefited from improved water quality in Shades Creek (ADEM, 2007; ADEM, 2012) as the site is just below its confluence with the Cahaba River. Since removal of the low-level dam, increases in fish abundance and diversity have been reported (Bennett et al., 2015). Considering *L. compacta* was not found at this site by Whelan, Johnson & Harris (2012), we think habitat either improved from a point where *L. compacta* could not survive or from a point of considerably lower carrying capacity. As the only undammed, major river in the southeastern United States, the Cahaba River is much less modified than most other systems in the southeast. Our findings suggest that imperiled gastropods will benefit from water quality and habitat improvements even in relatively “pristine” river systems. Improving habitat, or identifying suitable habitat, will be a necessary starting point for *L. compacta* reintroduction efforts.

In addition to having a small range, *L. compacta* only exists along a single river path. This means that one catastrophic event such as a massive point source pollution event above Cahaba River at Booth's Ford could result in extinction of *L. compacta*. Such an event is not merely a hypothetical. In 2016, a gasoline pipeline spill came perilously close to the Cahaba River (Pillion, 2016). To mitigate the risks of a single catastrophic event, reintroduction efforts should emphasize range expansion outside the mainstem Cahaba River. Of course, reintroduction efforts also must be limited by the historical range of any given species. Thus, lower Buck Creek is potentially an ideal reintroduction site if habitat quality is sufficient for the persistence of *L. compacta*. Once a suitable reintroduction site is chosen, managers will need to choose a broodstock site. This decision should be informed with genetic data. The absence of an isolation by distance effect across the current range of *L. compacta* indicates that managers do not need to prioritize potential broodstock sites based on whether they are geographically proximate to reintroduction sites. Rather, sites with high genetic diversity and ease of access should be prioritized for broodstock. Therefore, the Cahaba River above Shades Creek is likely an ideal broodstock location. Moreover, *L.*

compacta is easy to sample and relatively easy to distinguish from other sympatric species at Cahaba River above Shades Creek, making it ideal from both a genetic and sampling standpoint.

CONCLUSIONS

Even though *L. compacta* was considered extinct less than a decade ago, we now know more about this species than most other freshwater gastropods. This is helpful for conservation of *L. compacta* as the biggest barrier to effective management strategies for most freshwater gastropods is a lack of data. Future research efforts should focus on differences in dispersal dynamics among pleurocerids and causes of differences in riverscape genetic patterns seen between *L. ampla* and *L. compacta*. As more population genomic data becomes available for pleurocerids, we will be better suited to develop strategies to conserve these critically important components of many North American riverine ecosystems.

ACKNOWLEDGEMENTS

We thank Lauren Allred, Jecca Shumante, and Living River: A Retreat on the Cahaba for providing access to field sites. Haley Dutton (Auburn University) assisted in the field. Jeffrey Garner (Alabama Department of Conservation and Natural Resources), Matthew Galaska (University of Washington), Kenneth Halanych (Auburn University) and Katherine Bockrath (U.S Fish and Wildlife Service) provided advice on multiple components of this work. Rodolfo Jaffé, Brian Hand, and an anonymous reviewer provided comments that improved the manuscript. The findings and conclusions in this article are those of the authors and do not necessarily represent the views of the US Fish and Wildlife Service.

ADDITIONAL INFORMATION AND DECLARATIONS

Funding

This was work funded by a reverted Section 6 grant from Alabama Department of Conservation and Natural Resources and by United States Fish and Wildlife Service. This study was also supported by NSF grant DBI-1658694, the Alabama Agricultural Experiment Station, and the Hatch program of the National Institute of Food and Agriculture, U.S. Department of Agriculture. This work was also made possible by a grant of high-performance computing resources and technical support from the Alabama Supercomputer Authority. There was no additional external funding received for this study. The funders had no role in study design, data collection and analysis, decision to publish, or preparation of the manuscript.

Grant Disclosures

The following grant information was disclosed by the authors:

Alabama Department of Conservation and Natural Resources and by United States Fish and Wildlife Service.

NSF grant: DBI-1658694.

The Alabama Agricultural Experiment Station, and the Hatch program of the National Institute of Food and Agriculture, U.S. Department of Agriculture.
The Alabama Supercomputer Authority.

Competing Interests

The authors declare there are no competing interests.

Author Contributions

- Aaliyah D. Wright conceived and designed the experiments, performed the experiments, analyzed the data, prepared figures and/or tables, authored or reviewed drafts of the paper, and approved the final draft.
- Nicole L. Garrison and Ashantye' S. Williams performed the experiments, authored or reviewed drafts of the paper, and approved the final draft.
- Paul D. Johnson conceived and designed the experiments, authored or reviewed drafts of the paper, and approved the final draft.
- Nathan V. Whelan conceived and designed the experiments, performed the experiments, analyzed the data, prepared figures and/or tables, authored or reviewed drafts of the paper, and approved the final draft.

Field Study Permissions

The following information was supplied relating to field study approvals (i.e., approving body and any reference numbers):

Jecca Shumante and Lauren Allred of Living River: A Retreat on the Cahaba provided access to privately owned sites along the Cahaba River. Animals were collected under a permit from the Alabama Department of Conservation and Natural Resources (license number 2019100990068680). Samples collected in 2018 were collected by a co-author, Paul Johnson, who is an agent of the state and is not required to carry a specific collection permit.

Data Availability

The following information was supplied regarding data availability:

Code used in this study can be found at GitHub:

- https://github.com/NathanWhelan/population_genomics_scripts

- <https://github.com/NathanWhelan/2bRAD-processing>.

Raw sequence data are available on NCBI SRA BioProject [PRJNA631794](https://www.ncbi.nlm.nih.gov/bioproject/PRJNA631794).

Assembled datasets in various file formats (e.g., vcf, genepop) and the 2bRAD library prep protocol are available at FigShare:[DOI: 10.6084/m9.figshare.12014619.v1](https://doi.org/10.6084/m9.figshare.12014619.v1)

Voucher shells for each sequenced individual were deposited at the Auburn University Museum of Natural History under catalog numbers 45652-45690.

Supplemental Information

Supplemental information for this article can be found online at <http://dx.doi.org/10.7717/peerj.9789#supplemental-information>.

REFERENCES

- Alabama Department of Environmental Management. 2007.** 2007 rivers and streams monitoring summary report: Shades Creek at Jefferson County Road 6. Available at <http://adem.alabama.gov/programs/water/wqsurvey/table/2007/2007ShadesCk.pdf> (accessed on 15 April 2020).
- Alabama Department of Environmental Management. 2012.** 2012 rivers and streams monitoring summary report: Shades Creek at Parkwood Road in Jefferson County. Available at <http://adem.alabama.gov/programs/water/wqsurvey/table/2012/2012ShadesCk.pdf> (accessed on 15 April 2020).
- Andrews KR, Good JM, Miller MR, Luikart G, Hohenlohe PA. 2016.** Harnessing the power of RADseq for ecological and evolutionary genomics. *Nature Reviews Genetics* 17:81–92 DOI 10.1038/nrg.2015.28.
- Bennett MG, Howell JH, Kuhajda BR, Freeman PL. 2015.** New upstream records for fishes following dam removal in the Cahaba River. *Southeastern Fishes Council Proceedings* 55:50–61.
- Brown KM, Lang B, Perez KE. 2008.** The conservation ecology of North American pleurocerid and hydrobiid gastropods. *Journal of the North American Benthological Society* 27:484–495 DOI 10.1899/07-062.1.
- Catchen JM, Hohenlohe P, Bassham S, Amores A, Cresko W. 2013.** Stacks: an analysis tool set for population genomics. *Molecular Ecology* 22:3124–3140 DOI 10.1111/mec.12354.
- Chang CC, Chow CC, Tellier LCAM, Vattikuti S, Purcell SM, Lee JJ. 2015.** Second-generation PLINK: rising to the challenge of larger and richer datasets. *GigaScience* 4:7 DOI 10.1186/s13742-015-0047-8.
- Covich AP, Palmer MA, Crowl TA. 1999.** The role of benthic invertebrate species in freshwater ecosystems: zoobenthic species influence energy flows and nutrient cycling. *Bioscience* 49:119–127 DOI 10.2307/1313537.
- De Meeûs T. 2018.** Revisiting F_{IS} , F_{ST} , Wahlund effects, and null alleles. *Journal of Heredity* 108:446–456 DOI 10.1093/jhered/esx106.
- Dray S, Dufour AB. 2007.** The ade4 package: implementing the duality diagram for ecologists. *Journal of Statistical Software* 22:1–20 DOI 10.18637/jss.v022.i04.
- Excoffier L, Smouse PE, Quattro JM. 1992.** Analysis of molecular variance inferred from matrix distances among DNA haplotypes: application to human mitochondrial DNA restriction data. *Genetics* 131:479–491.
- Frankham R. 2005.** Genetics and extinction. *Biological Conservation* 126:131–140 DOI 10.1016/j.biocon.2005.05.002.
- Frankham R. 2010.** Challenges and opportunities of genetic approaches to biological conservation. *Biological Conservation* 143:1919–1927 DOI 10.1016/j.biocon.2010.05.011.
- Fukuda H, Haga T, Tatara Y. 2008.** Niku-nuki: a useful method for anatomical and DNA studies on shell-bearing molluscs. *Zoosymposia* 1:15–38 DOI 10.11646/zoosymposia.1.1.5.

- Goodrich C. 1922.** The *Anculosae* of the Alabama River drainage. University of Michigan Museum of Zoology Miscellaneous Publication No 7:63.
- Goodrich C. 1941.** Distribution of the gastropods of the Cahaba River, Alabama. *Occasional Papers of the Museum of Zoology* **426**:1–30.
- Goslee SC, Urban DL. 2007.** The ecodist package for dissimilarity-based analysis of ecological data. *Journal of Statistical Software* **22**:1–17 DOI [10.18637/jss.v022.i07](https://doi.org/10.18637/jss.v022.i07).
- Goudet J. 2005.** HIERFSTAT, a package for R to compute and test hierarchical *F*-statistics. *Molecular Ecology Resources* **5**:184–186 DOI [10.1111/j.1471-8286.2004.00828.x](https://doi.org/10.1111/j.1471-8286.2004.00828.x).
- Hughes JM, Schmidt DJ, Finn DS. 2009.** Genes in streams: using DNA to understand the movement of freshwater fauna and their riverine habitat. *Bioscience* **59**:573–583 DOI [10.1525/bio.2009.59.7.8](https://doi.org/10.1525/bio.2009.59.7.8).
- Huryn AD, Benke AC, Ward GM. 1995.** Direct and indirect effects of geology on the distribution, biomass, and production of the freshwater snail *Elimia*. *Journal of the North American Benthological Society* **14**:519–534 DOI [10.2307/1467538](https://doi.org/10.2307/1467538).
- Johnson PD. 2019.** Results of AABC freshwater mollusk survey Cahaba River historic shoal at Belle Ellen Bibb County, AL-7 2019. Report Submitted to Alabama Department of Conservation and Natural Resources. Marion, Alabama, 6.
- Johnson PD, Bogan AE, Brown KM, Burkhead NM, Cordeiro JR, Garner JT, Hartfield PD, Lepitzki DAW, Mackie GL, Pip E, Tarpley TA, Tiemann JS, Whelan NV, Strong EE. 2013.** Conservation status of freshwater gastropods of Canada and the United States. *Fisheries* **38**:247–282 DOI [10.1080/03632415.2013.785396](https://doi.org/10.1080/03632415.2013.785396).
- Johnson PD, Sides JD, McGregor SW, Ahlstedt SA, Garner JT, Butler RS, Novak SF. 2016.** Inventory of freshwater mollusks in the Cahaba River Basin, Alabama. Submitted to the Alabama Department of Conservation and Natural Resources. 153 pp.
- Jombart T, Ahmed I. 2011.** adegenet 1.3-1: new tools for the analysis of genome-wide SNP data. *Bioinformatics* **27**:3070–3071 DOI [10.1093/bioinformatics/btr521](https://doi.org/10.1093/bioinformatics/btr521).
- Kamvar ZN, Tabima JF, Grünwald NJ. 2014.** Poppr: an R package for genetic analysis of populations with clonal, partially clonal, and/or sexual reproduction. *PeerJ* **2**:e281 DOI [10.7717/peerj.281](https://doi.org/10.7717/peerj.281).
- Keenan K, McGinnity P, Cross TF, Crozier WW, Prodöhl PA. 2013.** diveRsity: an R package for the estimation and exploration of population genetics parameters and their associated errors. *Methods in Ecology and Evolution* **48**:782–788 DOI [10.1111/2041-210X.12067](https://doi.org/10.1111/2041-210X.12067).
- Kopelman NM, Mayzel J, Jakobsson M, Rosebnberg NA, Mayrose I. 2015.** Clumpak: a program for identifying clustering modes and packaging population structure inferences across K. *Molecular Ecology Resources* **15**:1179–1191 DOI [10.1111/1755-0998.12387](https://doi.org/10.1111/1755-0998.12387).
- Kurth JW. 2017.** Endangered and threatened wildlife and plants; 90-day findings for five species. *Federal Register* **82**:60362–60366.
- Lambert SM, Streicher JW, Fisher-Reid MC, Méndez de la Cruz FR, Martínez-Méndez N, García-Vázquez UO, De Oca ANM, Wiens JJ. 2019.** Inferring introgression

- using RADseq and D_{FOIL} : Power and pitfalls revealed in a case study of spiny lizards (*Sceloporus*). *Molecular Ecology Resources* **19**:818–837 DOI 10.1111/1755-0998.12972.
- Lawson DJ, Hellenthal G, Myers S, Falush D. 2012.** Inference of population structure using dense haplotype data. *PLOS Genetics* **8**:e1002453 DOI 10.1371/journal.pgen.1002453.
- Legendre P, Fortin M-J, Borcard D. 2015.** Should the Mantel test be used in spatial analysis. *Methods in Ecology and Evolution* **6**:1239–1247 DOI 10.1111/2041-210X.12425.
- Leigh DM, Lischer HEL, Keller LF. 2018.** Batch effects in a multiyear sequencing study: false biological trends due to changes in read lengths. *Molecular Ecology Resources* **18**:778–788 DOI 10.1111/1755-0998.12779.
- Lydeard C, Cowie RH, Ponder WF, Bogan AE, Bouchet P, Clark SA, Cummings KS, Frest TJ, Gargominy O, Herbert DG, Hershler R, Perez KE, Roth B, Seddon M, Strong EE, Thompson FG. 2004.** The global decline of nonmarine mollusks. *Bioscience* **54**:321–330 DOI 10.1641/0006-3568(2004)054[0321:TGDONM]2.0.CO;2.
- Lydeard C, Mayden RL. 1995.** A diverse and endangered ecosystem of the southeast United States. *Conservation Biology* **9**:800–805 DOI 10.1046/j.1523-1739.1995.09040800.x.
- Lysne SJ, Perez KE, Brown KM, Minton RL, Sides JD. 2008.** A review of freshwater gastropod conservation: challenges and opportunities. *Journal of the North American Benthological Society* **27**:463–470 DOI 10.1899/07-061.1.
- Malinsky M, Trucchi E, Lawson DJ, Falush D. 2018.** RADpainter and fineRADstructure: population inference from RADseq Data. *Molecular Biology and Evolution* **35**:1284–1290 DOI 10.1093/molbev/msy023.
- Manichaikul A, Mychaleckyj JC, Rich SS, Daly K, Sale M, Chen WM. 2010.** Robust relationship inference in genome-wide association studies. *Bioinformatics* **26**:2867–2873 DOI 10.1093/bioinformatics/btq559.
- Meirmans PG. 2015.** Seven common mistakes in population genetics and how to avoid them. *Molecular Ecology* **24**:3223–3231 DOI 10.1111/mec.13243.
- Mussman SM, Douglas MR, Chafin TK, Douglas ME. 2020.** AdmixPipe: population analyses in ADMIXTURE for non-model organisms DOI 10.5281/zenodo.3270852.
- National Marine Fisheries Service. 2018.** *Interim endangered and threatened species recovery planning guidance version 1.4*. Silver Spring: National Marine Fisheries Service, 122.
- Onorato D, Angus RA, Marion KR. 2000.** Historical changes in the ichthyofaunal assemblages of the upper Cahaba River in Alabama associated with extensive urban development in the watershed. *Journal of Freshwater Ecology* **15**:47–63 DOI 10.1080/02705060.2000.9663721.
- Paris JR, Stevens JR, Catchen JM. 2017.** Lost in parameter space: a road map for Stacks. *Methods in Ecology and Evolution* **8**:1360–1373 DOI 10.1111/2041-210X.12775.
- Paz-Vinas I, Loot G, Stevens VM, Blanchet S. 2015.** Evolutionary processes driving spatial patterns of intraspecific genetic diversity in river ecosystems. *Molecular Ecology* **24**:4586–4604 DOI 10.1111/mec.13345.

- Perez KE, Minton RL. 2008.** Practical applications for systematics and taxonomy in North American freshwater gastropod conservation. *Journal of the North American Benthological Society* **27**:471–483 DOI [10.1899/07-059.1](https://doi.org/10.1899/07-059.1).
- Pillion D. 2016.** Alabama pipeline leak: what we know so far about the spill, gas shortages and more. Available at https://www.al.com/news/birmingham/2016/09/how_alabama_pipeline_leak_led.html (accessed on 19 March 2020).
- Pitt RE. 2000.** Water quality conditions in the Cahaba River and likely pollutant sources. Birmingham, Alabama: Department of Civil and Environmental Engineering, University of Alabama at Birmingham.
- Potter JJ, Thomas WL. 1983.** Endangered and threatened species listing and recovery priority guidelines. *Federal Register* **48**:43098–43105.
- R Core Team. 2020.** *R: a language and environment for statistical computing*. Vienna: R Foundation for Statistical Computing.
- Rumble SM, Lacroute P, Dalca AV, Fiume M, Sidow A, Brundo M. 2009.** SHRiMP: accurate mapping of short color-space reads. *PLOS Computational Biology* **5**:e1000386 DOI [10.1371/journal.pcbi.1000386](https://doi.org/10.1371/journal.pcbi.1000386).
- Shepard TE, O’Neil PE, McGregor SW, Harris SC. 1994.** Water-quality and biomonitoring studies in the upper Cahaba River drainage of Alabama. *Geological Survey of Alabama Bulletin* **160**:1–118.
- Shringarpure SS, Bustamante CD, Lange K, Alexander DH. 2016.** Efficient analysis of large datasets and sex bias with ADMIXTURE. *BMC Bioinformatics* **17**:218 DOI [10.1186/s12859-016-1082-x](https://doi.org/10.1186/s12859-016-1082-x).
- Strong EE, Gargominy O, Ponder WF, Bouchet P. 2008.** Global diversity of gastropods (Gastropoda; Mollusca) in freshwater. *Hydrobiologia* **595**:149–166 DOI [10.1007/S10750-007-9012-6](https://doi.org/10.1007/S10750-007-9012-6).
- Strong EE, Köhler F. 2009.** Morphological and molecular analysis of ‘*Melania jacqueti*’ Dautzenberg and Fischer, 1906: from anonymous orphan to critical basal offshoot of the Semisulcospiridae (Gastropoda: Cerithioidea). *Zoologica Scripta* **38**:483–502 DOI [10.1111/j.1463-6409.2008.00385.x](https://doi.org/10.1111/j.1463-6409.2008.00385.x).
- Tolley-Jordan LR, Huryn AD, Bogan AE. 2015.** Effects of land-use change on a diverse pleurocerid snail assemblage. *Aquatic Conservation: Marine and Freshwater Ecosystems* **25**:235–249 DOI [10.1002/aqc.2474](https://doi.org/10.1002/aqc.2474).
- Wahlund S. 1928.** Zusammensetzung von population und korrelationserscheinung vom stand-punkt der vererbungslehre aus betrachtet. *Hereditas* **11**:65–106 [English translation. In: Weiss KM, Ballonoff PA, editors. 1975. Demographic Genetics. Dowden, Hutchinson and Ross, Stroudsburg. 224–263].
- Wang S, Meyer E, McKay JK, Matz MV. 2012.** 2b-RAD: a simple and flexible method for genome-wide genotyping. *Nature Methods* **9**:808–810 DOI [10.1038/nmeth.2023](https://doi.org/10.1038/nmeth.2023).
- Weir BS, Cockerham CC. 1984.** Estimating *F*-statistics for the analysis of population structure. *Evolution* **38**:1358–1370 DOI [10.1111/j.1558-5646.1984.tb05657.x](https://doi.org/10.1111/j.1558-5646.1984.tb05657.x).
- Whelan NV, Galaska MP, Siple BN, Weber JM, Johnson PD, Halanych KM, Helms BS. 2019.** Riverscape genetic variation, migration patterns, and morphological

variation of the threatened Round Rocksnail, *Leptoxis ampla*. *Molecular Ecology* **28**:1593–1610 DOI [10.1111/mec.15032](https://doi.org/10.1111/mec.15032).

Whelan NV, Johnson PD, Harris PM. 2012. Rediscovery of *Leptoxis compacta* (Anthony, 1854) (Gastropoda: Cerithioidea: Pleuroceridae). *PLOS ONE* **7**:e42499 DOI [10.1371/journal.pone.0042499](https://doi.org/10.1371/journal.pone.0042499).

Whelan NV, Johnson PD, Harris PM. 2015. Life-history traits and shell morphology in the genus *Leptoxis* Rafinesque, 1819 (Gastropoda: Cerithioidea: Pleuroceridae). *Journal of Molluscan Studies* **81**:85–95 DOI [10.1093/mollus/eyu058](https://doi.org/10.1093/mollus/eyu058).