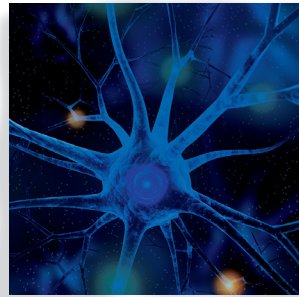


The debate regarding maintenance treatment with antipsychotic drugs in schizophrenia

Michael Davidson, MD



Introduction

Serendipitous observations and research conducted between the 1950s and the 1970s provided uncontroversial evidence that drugs which block dopamine (DA) receptors ameliorate acute agitation, delusion, hallucination, and thought disorder, all characteristics of the schizophrenic illness.¹ Because the natural course of schizophrenia is characterized by alternating periods of psychotic symptom emergence, improvement, and

Several large meta-analyses of maintenance trials have confirmed that patients who suffer from chronic schizophrenia, randomized to placebo, are likely to experience earlier symptomatic worsening than patients randomized to a dopamine (DA)-blocking drug. These findings led expert groups to issue treatment guidelines, which recommend treatment with DA-blocking drugs for periods ranging from several years to indefinitely. The recommendations were accepted by the majority of, but not all, the experts, some of whom proposed a targeted or intermittent therapy approach by which DA-blocking drugs are discontinued upon symptomatic remission, to be renewed in case of symptom re-emergence. The debate between continued and targeted treatment approaches arises from disagreements regarding scientific and ethical questions. Scientifically, the discussion focuses on the quality and interpretation of the supporting or detracting evidence regarding each treatment option. For example, what is the percentage of individuals who can maintain stability off drugs? What is the rate of individuals who exacerbate despite maintenance treatment? What is the percentage of individuals who experience drug-related adverse effects? How can we interpret results of open-label, nonrandomized targeted trials? Regarding ethical questions, the debating sides disagree on how to weigh the impact of the decreased risk for exacerbation versus the certainty of adverse effects on the patient's quality of life, and how to reach a patient-therapist shared decision within the constraints of mental illness.

© 2018, AICH – Servier Group

Dialogues Clin Neurosci. 2018;20:215-221.

Keywords: antipsychotics; dopamine; maintenance treatment; schizophrenia

Address for correspondence: email: mdavidson6@gmail.com

Author affiliations: UniSackler School of Medicine, Tel Aviv, Israel; Nicosia Medical School, Nicosia, Cyprus

20th anniversary issue

re-emergence, researchers in the 1970s and 1980s investigated the possibility that the same DA-blocking drugs might also reduce the risk of symptom re-emergence.² The fact that the same drug might ameliorate symptoms during a disease flare-up can also reduce the risk of future flare-ups is well-documented in medicine: for instance, steroids ameliorate flare-ups and of rheumatoid arthritis and reduce the risk of future flare-ups.³

A comprehensive meta-analysis of placebo-controlled maintenance trials has confirmed that patients randomized to placebo are likely to experience earlier symptomatic worsening compared to patients randomized to a DA-blocking drug.⁴ These findings have led professional organizations and expert groups to issue treatment guidelines recommending that individuals who manifest acute psychosis and meet diagnostic criteria for schizophrenia should be treated with DA blocking drugs for 1 to 3 years after symptom reduction or remission.⁵ Despite some variability between guidelines, it is also recommended that individuals who experience symptom recurrence should continue treatment for many years to indefinitely.⁶⁻⁸ The recommendations regarding the treatment of the acute phase of the schizophrenic illness are almost beyond debate. However, those regarding continuous maintenance treatment have been adopted by most researchers and clinicians¹⁰ but questioned by others.¹¹⁻¹⁵ The latter proposes a targeted therapy approach by which DA-blocking drugs are discontinued upon symptomatic remission and renewed only in case of symptoms re-emergence.

Despite some reservations,¹⁶ the case for continuous maintenance treatment is straightforward in that the risk for symptoms re-emergence persists long after resolutions of the acute symptoms. The argument recurring in several comprehensive reviews^{9,10,17} is that the short- and long-term impact of exacerbations and hospitalizations on the patients' well-being justifies the immediate and cumulative adverse effects of the drugs. Since there are no diagnostic markers that distinguish between individuals who can maintain very long periods of symptom stability or remission in the absence of DA blocking drugs and those who would experience exacerbation,¹⁸ and since the impact of exacerbation is harmful and demoralizing, all individuals affected by chronic schizophrenia should be encouraged to accept continuous, long-term maintenance treatment.

The case for the targeted treatment approach argues that, like almost all medical interventions, maintenance

treatment has immediate and accumulating adverse effects; therefore, its use should be restricted to the minimum regarding dose and duration. Specifically, acutely ill patients should be treated until stabilized, after which the dose of medication should be reduced and subsequently discontinued. Should acute symptoms re-emerge, the same cycle and procedure are to be repeated. Several follow-up studies supporting this approach have indicated that schizophrenic patients on a targeted treatment have better long-term outcomes, in terms of social and vocational performance than those on continuous treatment.¹⁹⁻²⁷

The debate between continued and targeted treatment approaches arises from disagreements regarding scientific and ethical questions.²⁸ Scientifically, the debate focuses on the quality and interpretation of the supporting and detracting evidence regarding each treatment option. For example, what is the percentage of individuals who can maintain stability off drugs? What is the percentage of individuals who exacerbate despite maintenance treatment? What is the percentage of individuals who experience different drug-related adverse effects? What is the clinical significance if any, of brain volume loss? How to interpret results of targeted trials, most of which are open-label, non-randomized trials? On the ethical aspect, the debating sides disagree on how to weight the impact of the decreased risk for exacerbation versus the certainty of mild-to-moderate AE and the risk of severe AE on the patient's quality of life.²⁹

Critique and defence of the continuous maintenance approach

Dopamine sensitization

Continued blockage of DA receptors may cause receptor super-sensitivity, which might, upon abrupt discontinuation of antipsychotics, contribute to rapid and frequent exacerbation.^{11,30} This idea is supported by studies in rodents demonstrating that chronic treatment with antipsychotics increases DA receptor densities.³¹ It is argued, the worsening of symptoms upon discontinuation of antipsychotics might reflect the effect of withdrawal rather than loss of the benefit of the drugs.³² An alternative explanation for rapid worsening upon drug discontinuation is the possibility that antipsychotic drugs with intrinsic anticholinergic effects produce cholinergic rebound upon discontinuation, which manifests as general malaise and can be mistaken for symptom worsening.³³

However, a meta-analysis that looked at trials comparing abrupt versus gradual discontinuation of DA-blocking drugs found no differences between the two modalities regarding symptom worsening.⁴ Recent publication supports this assertion, showing that most relapses occur months and years after discontinuation rather than upon or immediately after discontinuation.³⁴

Brain volume loss

Meta-analyses of imaging studies have demonstrated a correlation between cumulative exposure to antipsychotics and gray-matter loss,³⁵⁻³⁷ which in turn might be responsible for the cognitive³⁸ and social impairments³⁹ observed in schizophrenia. Still, loss of brain tissue has been reported in premorbid and first-episode patients who were drug-naïve or had received antipsychotics only for brief periods of time. An alternative explanation posits that larger cumulative doses of antipsychotics could reflect a more severe form of illness, which could be associated with tissue loss. However, at least one study indicates that the correlation between cumulative exposure to antipsychotics and tissue loss is maintained even when controlling for severity of illness.⁴⁰

Premature death, metabolic abnormalities, and cardiovascular morbidity

It is well-established that schizophrenic patients die earlier than age-matched controls,⁴¹ and that antipsychotics drugs increase risk for diabetes, abnormal blood lipids, and weight gain, which in turn increase risk for cardiovascular disease and death.^{10,42,43} However, other reasons, such as poor access to medical care and suicide, might contribute to premature death. Furthermore, data indicate that compliance with antipsychotic medication might reduce death rate.^{34,44} One explanation for such discrepant findings is that the reduced rate of death associated with compliance to antipsychotic treatment reflects a general tendency to be compliant with medical treatment and a healthier life style, rather than a direct benefit of antipsychotic drugs.

Lack of ecological validity and other methodological limitations

Most maintenance placebo-controlled trials last between 6 and 12 months,¹⁶ which might be too short for

an illness with a lifetime course to be informative. Also, events such as violent outbursts or even hospitalizations, used as outcomes in maintenance trials, are not necessarily surrogates for illness worsening and exacerbation but could reflect the reaction of society to any aberrant behavior in an individual with a diagnosis of schizophrenia. Furthermore, maintenance trials comparing a DA-blocking agent with placebo cannot be truly blinded since the drugs have AE that are known and anticipated by both patient and the investigator/rater,⁴⁵ which biases the results in favor of the active drug over placebo.

Poor tolerability affecting patient's quality of life

Antipsychotics differ regarding tolerability profile, and individual patients experience each adverse effect differently, but none is devoid of tolerability problems. Akathisia, stiffness, tremor, apathy, sedation, lethargy, avolition, slowness of movement, and weight gain are AE which affect a patient's daily life.⁴⁶ Furthermore, since some of the AE are visible to others, it might amplify the stigma associated with the illness.⁴⁷ Using the minimal effective dose and supplementing with anticholinergic drugs might mitigate a few but not most of the AE.

Limited effectiveness

DA-blocking drugs, initially known as major tranquilizers,⁴⁸ are effective mainly for acute agitated behavior and some aspects of psychosis, while the phenomenology of schizophrenia includes negative symptoms, impairment in judgment, and cognitive and social functioning, impairments on which the DA-blocking drugs have no direct therapeutic effect.⁴⁹ On the contrary, they may even produce secondary negative symptoms in addition to the intrinsic primary negative symptoms.^{50,51} Indeed, patients followed for a very long time off antipsychotics have less negative symptoms compared to treated patients.⁵² Since DA neurotransmission mediates brain reward circuits,⁵³⁻⁵⁵ it can be hypothesized that blocking DA receptors might deprive patients of experiences of pleasure and expecting reward(s).

Furthermore, questions have been raised as to whether improvements on psychometric scales, while being sufficient to demonstrate statistically signifi-

cant differences between drug and placebo, are also clinically meaningful.⁵⁶⁻⁵⁹ Even if the advantages are clinically meaningful, it is not obvious whether maintenance treatment has a real impact on the social and vocational reintegration of patients, most of who remain socially isolated and unemployed.⁶⁰ Moreover, the beneficial effects of antipsychotics seem to decrease as a function of study duration.⁴ Proponents of the continuous treatment hypothesized that the biological effect of the drugs remains unchanged, but as the trial continues, compliance with treatment decreases, nullifying the advantage of being in the active arm versus the placebo.¹⁰

It is also accepted that several biologically distinct abnormalities probably coexist under the diagnostic umbrella of schizophrenia,⁶¹⁻⁶³ making it improbable that the same pharmacological intervention—interference with the DA neurotransmission—would be effective for all subgroups. In maintenance trials at least 20% of the patients randomized to the active drug have the same time course in terms of symptoms as those randomized to placebo,⁴ and antipsychotics appear to lose efficacy after 5 to 10 years of treatment in about two-thirds of the treated patients.⁶⁴ Between patients who can maintain remission without need for antipsychotics and patients who are actively psychotic despite antipsychotic treatment or treatment-resistant,⁶³ it seems that a considerable number of patients are subjected to the adverse effects of antipsychotics without clear benefit.

Critique and defense of the targeted treatment approach

Risk of exacerbation

Trials comparing early versus late discontinuation of antipsychotic drugs in first-episode patients demonstrated higher exacerbation and hospitalization rate in the former group.^{34,65} Controlled trials comparing targeted versus continued maintenance treatment in chronically ill patients reported more exacerbation and hospitalization in the targeted arm.⁶⁶ Furthermore, relapses may impact the long-term outcome negatively as symptoms may not return to pre-discontinuation baseline.⁶⁷ However, contrary evidence also exists, indicating that when antipsychotics are reinstated, symptoms return to baseline.^{68,69}

Selection bias and reverse causality

Trials that demonstrated better outcome(s) after several decades of follow-up of patients receiving targeted or no maintenance treatment at all did not use a random assignment design⁷⁰ or utilized old, inadequate methodologies,⁷¹ and the results were affected by attrition bias.⁷² Patients with less severe symptoms at baseline might have been selected for follow-up when off drugs, while patients with a more severe illness at baseline were followed up when on drugs.^{73,74} However, even if that has been the case, it still demonstrates that a subgroup of above 20% of patients with a diagnosis of schizophrenia does not experience psychotic symptoms in the absence of antipsychotic drugs.⁷⁵ Furthermore, at least one study demonstrating the advantages of targeted therapy used a random assignment design.⁷⁶

The ethical dilemma

Having seen repeated exacerbations, patients' anguish, hospitalization, and socially unacceptable behaviors of patients who discontinue medications, most psychiatrists and mental health workers concur with the guidelines and advise patients and their families to adhere to continuous maintenance treatment.⁷⁷ However, a very high percentage of patients discontinue medications against medical advice.⁷⁸ Others titrate their own medications to avoid AE, or take medications only when they believe their symptoms are getting worse. Some patients insist that medication discontinuation be attempted, despite concurring with medical advice. Since impaired judgment characterizes schizophrenia, the patients' negative attitude towards medication might be attributed to poor insight into the illness and the benefits of medication.^{79,80} This view, although not devoid of scientific support,⁸¹ aligns poorly with notions of respect for patients' autonomy^{82,83} and shared decision-making.^{84,85} To complicate matters even more, it is also conceivable that some patients who do not adhere to their prescribed treatment are making informed decisions that the increased risk of symptom worsening is preferable to the certainty of adverse effects.⁸⁶ Such decisions are supported by the existence of subgroups of patients who would maintain symptom stability and would better function socially and vocationally when off antipsychotic drugs.⁸⁷ Regardless of the final decision if to stay on medication or not, psychi-

cians have the duty to protect patients from making bad treatment decisions.⁸⁸

Although results of well-conducted trials are the foundation of clinical decision making, physicians' psychological biases might also play a role. The recent memory of the last patient who has discontinued treatment, exacerbated, and "got into trouble" (ie, availability bias)⁸⁹ probably affects treatment decisions more than the patients who were lost to follow-up and were doing well without any treatment.⁹⁰ Likewise, negative outcomes, such as risk for exacerbation, hospitalization, or aberrant behavior are given more weight in medical decisions than positive outcome, such as the certainty of living without the AE of drugs (ie, negativity bias).⁹¹ While the main priority for a treating psychiatrist is to avoid symptom exacerbation and hospitalization, for a patient it might be looking slim and avoiding stiffness.¹¹

Conclusion

In summary, despite the benefits of DA-blocking drugs for some aspects of schizophrenia, available data have not provided satisfactory answers to the dilemma raised by maintenance treatment,⁹² for the practising clinician

who treats patients with residual and/or negative symptoms or who are reluctant to accept the adverse effects of DA blocking drugs (see World Psychiatry Forum 2018). Future research will have to address these questions: (a) what should be the criteria for the selection of candidates for discontinuation of maintenance treatment? (b) how can we ascertain that the patient indeed understands the risk and benefits of treatment discontinuation? (c) once discontinued, how can we distinguish, in a "vulnerable" individual, between normal reaction to daily life stresses and impending symptom exacerbation requiring re-instatement of treatment, or what should be the threshold for reinstating treatment? (d) are any of the suggested protective factors such as abrupt onset, female gender,⁹³ or biological markers⁹⁴ clinically useful? (e) and, is past experience of early⁹⁵ and protracted stability, or of rapid exacerbation, predictive of the same in the future?⁹³

Hopefully, current research will produce better-tolerated drugs for schizophrenia, targeting negative symptoms⁹⁶ and cognitive impairment, which do not necessarily block DA receptors⁹⁷⁻⁹⁹ hence, devoid of the associated adverse effects. □

Disclosure/Acknowledgments: Michael Davidson is the CMO of Minerva Neurosciences.

REFERENCES

- López-Muñoz F, Alamo C, Cuenca E, Shen WW, Clervoy P, Rubio G. History of the discovery and clinical introduction of chlorpromazine. *Ann Clin Psychiatry*. 2005;17(3):113-135.
- Hogarty GE. Prevention of relapse in chronic schizophrenic patients. *J Clin Psychiatry*. 1993;54(suppl):18-23.
- García-Magallón B, Silva-Fernández L, Andreu-Sánchez JL. Update on the use of steroids in rheumatoid arthritis. *Reumatol Clin*. 2013;9(5):297-302.
- Leucht S, Tardy M, Komossa K, et al. Antipsychotic drugs versus placebo for relapse prevention in schizophrenia: a systematic review and meta-analysis. *Lancet*. 2012;379(9831):2063-2071.
- Hasan A, Falkai P, Wobrock T, Lieberman J, Glenthøj B, Gattaz WF, Thibaut F, Möller HJ; World Federation of Societies of Biological Psychiatry (WFSBP) Task Force on Treatment Guidelines for Schizophrenia. World Federation of Societies of Biological Psychiatry (WFSBP) Guidelines for Biological Treatment of Schizophrenia, part 1: update 2012 on the acute treatment of schizophrenia and the management of treatment resistance. *World J Biol Psychiatry*. 2012;13(5):318-378.
- Takeuchi H, Suzuki T, Uchida H, Watanabe K, Mimura M. Antipsychotic treatment for schizophrenia in the maintenance phase: a systematic review of the guidelines and algorithms. *Schizophr Res*. 2012;134(2-3):219-225.
- Kreyenbuhl J, Buchanan RW, Dickerson FB, Dixon LB. Schizophrenia patient outcomes research team (port). the schizophrenia patient outcomes research team (PORT): updated treatment recommendations 2009. *Schizophr Bull*. 2010;36(1):94-103.
- Hasan A, Falkai P, Wobrock T et al; WFSBP Task force on Treatment Guidelines for Schizophrenia. World Federation of Societies of Biological Psychiatry (WFSBP) guidelines for biological treatment of schizophrenia, part 2: update 2012 on the long-term treatment of schizophrenia and management of antipsychotic-induced side effects. *World J Biol Psychiatry*. 2013;14(1):2-44.
- Goff DC, Falkai P, Fleischhacker WW, et al. The long-term effects of antipsychotic medication on clinical course in schizophrenia. *Am J Psychiatry*. 2017;174(9):840-849.
- Correll CU, Solmi M, Veronese N et al. Prevalence, incidence and mortality from cardiovascular disease in patients with pooled and specific severe mental illness: a large-scale meta-analysis of 3,211,768 patients and 113,383,368 controls. *World Psychiatry* 2017;16:163-180.
- Robin M, Murray, Diego Quattrone, Sridhar Natesan, et al. Should psychiatrists be more cautious about the long-term prophylactic use of antipsychotics? *Br J Psychiatry*. 2016;209(5):361-365.
- Insel T. Former NIMH Director's Blog: Antipsychotics: Taking the Long View. n.d. Retrieved from www.nimh.nih.gov/about/directors/thomas-insel/blog/2013/antipsychotics-taking-the-long-view.shtml.
- Alvarez-Jimenez M, O'Donoghue B, Thompson A, et al. Beyond clinical remission in first episode psychosis: thoughts on antipsychotic maintenance vs. guided discontinuation in the functional recovery era. *CNS Drugs*. 2016;30(5):357-368.
- Gotzsche PC, Young AH, Crace J. Does long term use of psychiatric drugs cause more harm than good? *BMJ*. 2015;350:h2435.
- Morgan C, Lappin J, Heslin M, et al. Reappraising the long-term course and outcome of psychotic disorders: the AESOP-10 study. *Psychol Med*. 2014;44(13):2713-2726.
- Leucht S, Davis JM. Do antipsychotic drugs lose their efficacy for relapse prevention over time? *Br J Psychiatry*. 2017;211(3):127-129.
- Hui CLM, Honer WG, Lee EHM, et al. Long-term effects of discontinuation from antipsychotic maintenance following first-episode schizophrenia and related disorders: a 10 year follow-up of a randomized, double-blind trial. *Lancet Psychiatry*. 2018;5(5):432-442.
- Bowtell M, Ratheesh A, McGorry P, Killackey E, O'Donoghue B. Clinical and demographic predictors of continuing remission or relapse following discontinuation of antipsychotic medication after a first episode of psychosis. A systematic review. *Schizophr Res*. 2017. pii: S0920-9964(17)30687-4.

20th anniversary issue

19. Gottfredsen DR, Wils RS, Hjorthøj C, et al. Stability and development of psychotic symptoms and the use of antipsychotic medication - long-term follow-up. *Psychol Med*. 2017;47(12):2118-2129.
20. Husa AP, Rannikko I, Moilanen J et al. Lifetime use of antipsychotic medication and its relation to change of verbal learning and memory in midlife schizophrenia - An observational 9-year follow-up study. *Schizophr Res*. 2014;158(1-3):134-141.
21. Torgalsbøen AK. Sustaining full recovery in schizophrenia after 15 years: does resilience matter? *Clin Schizophr Relat Psychoses*. 2012;5(4):193-200.
22. Harrow M, Jobe TH. Does long-term treatment of schizophrenia with antipsychotic medications facilitate recovery? *Schizophr Bull*. 2013;39(5):962-965.
23. Moilanen JM, Haapea M, Jääskeläinen E, et al. Long-term antipsychotic use and its association with outcomes in schizophrenia - the Northern Finland Birth Cohort 1966. *Eur Psychiatry*. 2016;36:7-14.
24. Wunderink L, Nieboer RM, Wiersma D, Sytma S, Nienhuis FJ. Recovery in remitted first-episode psychosis at 7 years of follow-up of an early dose reduction/discontinuation or maintenance treatment strategy: long-term follow-up of a 2-year randomized clinical trial. *JAMA Psychiatry*. 2013;70(9):913-920.
25. Volavka J, Vevera J. Very long-term outcome of schizophrenia. *Int J Clin Pract*. 2018;24:e13094.
26. Wils RS, Gottfredsen DR, Hjorthøj C, et al. Antipsychotic medication and remission of psychotic symptoms 10years after a first-episode psychosis. *Schizophr Res*. 2017;182:42-48.
27. Morrison AP, Hutton P, Wardle M, et al. Cognitive therapy for people with a schizophrenia spectrum diagnosis not taking antipsychotic medication: an exploratory trial. *Psychol Med*. 2012;42(5):1049-1056.
28. McGorry P, Alvarez-Jimenez M, Killackey E. Antipsychotic medication during the critical period following remission from first-episode psychosis: less is more. *JAMA Psychiatry*. 2013;70(9):898-900.
29. Eack SM, Newhill CE, Anderson CM, Rotondi AJ. Quality of life for persons living with schizophrenia: more than just symptoms. *Psychiatr Rehabil J*. 2007;30(3):219-222.
30. Chouinard G, Jones BD. Neuroleptic-induced supersensitivity psychosis: clinical and pharmacologic characteristics. *Am J Psychiatry*. 1980;137(1):16-21.
31. Muller P, Seeman P. Dopaminergic supersensitivity after neuroleptics: time-course and specificity. *Psychopharmacology (Berl)*. 1978;60(1):1-11.
32. Moncrieff J. Antipsychotic maintenance treatment: time to rethink? *PLoS Med*. 2015;12(8):e1001861.
33. Shiovitz TM, Welke TL, Tigel PD, et al. Cholinergic rebound and rapid onset psychosis following abrupt clozapine withdrawal. *Schizophr Bull*. 1996;22(4):591-595.
34. Tiihonen J, Tanskanen A, Taipale H. 20-year nationwide follow-up study on discontinuation of antipsychotic treatment in first-episode schizophrenia. *Am J Psychiatry*. 2018;appiajp201817091001.
35. Ho BC, Andreasen NC, Ziebell S, Pierson R, Magnotta V. Long-term antipsychotic treatment and brain volumes: a longitudinal study of first-episode schizophrenia. *Arch Gen Psychiatry*. 2011;68(2):128-137.
36. Fusar-Poli P, Smieskova R, Kempton MJ, Ho BC, Andreasen NC, Borgwardt S. Progressive brain changes in schizophrenia related to antipsychotic treatment? A meta-analysis of longitudinal MRI studies. *Neurosci Biobehav Rev*. 2013;37(8):1680-1691.
37. Huhtaniska S, Jääskeläinen E, Hirvonen N, et al. Long-term antipsychotic use and brain changes in schizophrenia - a systematic review and meta-analysis. *Hum Psychopharmacol*. 2017;32(2).
38. Andreasen NC, Nopoulos P, Magnotta V, Pierson R, Ziebell S, Ho BC. Progressive brain change in schizophrenia: a prospective longitudinal study of first-episode schizophrenia. *Biol Psychiatry*. 2011;70(7):672-679.
39. Guo JY, Huhtaniska S, Miettunen J, et al. Longitudinal regional brain volume loss in schizophrenia: relationship to antipsychotic medication and change in social function. *Schizophr Res*. 2015;168(1-2):297-304.
40. Veijola J, Guo JY, Moilanen JS, et al. Longitudinal changes in total brain volume in schizophrenia: relation to symptom severity, cognition and antipsychotic medication. *PLoS One*. 2014;9(7):e101689.
41. Weinmann S, Read J, Aderhold V. Influence of antipsychotics on mortality in schizophrenia: systematic review. *Schizophr Res*. 2009;113(1):1-11.
42. Lieberman JA. Metabolic changes associated with antipsychotic use. *Prim Care Companion J Clin Psychiatry*. 2004;6(Suppl 2):8-13.
43. Ray WA, Chung CP, Murray KT, Hall K, Stein CM. Atypical antipsychotic drugs and the risk of sudden cardiac death. *N Engl J Med*. 2009;360(3):225-235.
44. Vermeulen J, van Rooijen G, Doedens P, Numminen E, van Tricht M, de Haan L. Antipsychotic medication and long-term mortality risk in patients with schizophrenia; a systematic review and meta-analysis. *Psychol Med*. 2017;47(13):2217-2228.
45. Leucht S, Heres S, Hamann J, Kane JM. Methodological issues in current antipsychotic drug trials. *Schizophr Bull*. 2008;34(2):275-285.
46. Bebbington PE, Angermeyer M, Azorin JM, Marwaha S, Marteau F, Toumi M. Side-effects of antipsychotic medication and health-related quality of life in schizophrenia. *Acta Psychiatr Scand Suppl*. 2009;(438):22-28.
47. Feldhaus T, Falke S, von Gruchalla L, et al. The impact of self-stigmatization on medication attitude in schizophrenia patients. *Psychiatry Res*. 2018;261:391-399.
48. Moncrieff J. Magic bullets for mental disorders: the emergence of the concept of an "antipsychotic" drug. *J Hist Neurosci*. 2013;22(1):30-46.
49. Gaebel W, Riesbeck M, Wölwer W, et al. Rates and predictors of remission in first-episode schizophrenia within 1 year of antipsychotic maintenance treatment. Results of a randomized controlled trial within the German Research Network on Schizophrenia. *Schizophr Res*. 2014;152(2-3):478-486.
50. Kirschner M, Aleman A, Kaiser S. Secondary negative symptoms - A review of mechanisms, assessment and treatment. *Schizophr Res*. 2017;186:29-38.
51. Artaloytia JF, Arango C, Lahti A, et al. Negative signs and symptoms secondary to antipsychotics: a double-blind, randomized trial of a single dose of placebo, haloperidol, and risperidone in healthy volunteers. *Am J Psychiatry*. 2006;163(3):488-493.
52. Kotov R, Fochtmann L, Li K et al. Declining clinical course of psychotic disorders over the two decades following first hospitalization: evidence from the Suffolk county mental health project. *Am J Psychiatry*. 2017;174(11):1064-1074.
53. Szczypiński JJ, Gola M. Dopamine dysregulation hypothesis: the common basis for motivational anhedonia in major depressive disorder and schizophrenia? *Rev Neurosci*. 2018. pii: /j/revneuro.ahead-of-print/revneuro-2017-0091/revneuro-2017-0091.xml. doi: 10.1515/revneuro-2017-0091. [Epub ahead of print].
54. Grace AA, Gomes FV. The circuitry of dopamine system regulation and its disruption in schizophrenia: insights into treatment and prevention. *Schizophr Bull*. 2018 Jan 29. doi: 10.1093/schbul/sbx199. [Epub ahead of print].
55. Maia TV, Frank MJ. An integrative perspective on the role of dopamine in schizophrenia. *Biol Psychiatry*. 2017;81(1):52-66.
56. Levine SZ, Rabinowitz J, Engel R, Etschel E, Leucht S. Extrapolation between measures of symptom severity and change: an examination of the PANSS and CGI. *Schizophr Res*. 2008;98(1-3):318-322.
57. Leucht S, Kane JM, Kissling W, Hamann J, Etschel E, Engel RR. What does the PANSS mean? *Schizophr Res*. 2005;79(2-3):231-238.
58. Leucht S, Kane JM, Kissling W, Hamann J, Etschel E, Engel R. Clinical implications of Brief Psychiatric Rating Scale scores. *Br J Psychiatry*. 2005;187:366-371.
59. Lepping P, Sambhi RS, Whittington R, Lane S, Poole R. Clinical relevance of findings in trials of antipsychotics: systematic review. *Br J Psychiatry*. 2011;198(5):341-345.
60. Davidson M, Kapara O, Goldberg S, Yoffe R, Noy S, Weiser M. A nationwide study on the percentage of schizophrenia and bipolar disorder patients who earn minimum wage or above. *Schizophr Bull*. 2016;42(2):443-447.
61. Lally J, Ajnakina O, Di Forti M et al. Two distinct patterns of treatment resistance: clinical predictors of treatment resistance in first-episode schizophrenia spectrum psychoses. *Psychol Med*. 2016;46(15):3231-3240.
62. Vanes LD, Mouchlianitis E, Collier T, Averbach BB, Shergill SS. Differential neural reward mechanisms in treatment-responsive and treatment-resistant schizophrenia. *Psychol Med*. 2018;14:1-10.
63. Howes OD, McCutcheon R, Agid O, et al. Treatment-resistant schizophrenia: treatment response and resistance in psychosis (trrip) working group consensus guidelines on diagnosis and terminology. *Am J Psychiatry*. 2017;174(3):216-229.

64. Harrow M, Jobe TH, Faull RN. Does treatment of schizophrenia with antipsychotic medications eliminate or reduce psychosis? A 20-year multi-follow-up study. *Psychol Med.* 2014;44(14):3007-3016.
65. De Hert M, Sermon J, Geerts P, Vansteelandt K, Peuskens J, Detraux J. The use of continuous treatment versus placebo or intermittent treatment strategies in stabilized patients with schizophrenia: a systematic review and meta-analysis of randomized controlled trials with first- and second-generation antipsychotics. *CNS Drugs.* 2015;29(8):637-658.
66. Gilbert PL, Harris MJ, McAdams LA, Jeste DV. Neuroleptic withdrawal in schizophrenic patients. A review of the literature. *Arch Gen Psychiatry.* 1995;52(3):173-188.
67. Lieberman JA, Koreen AR, Chakos M, et al. Factors influencing treatment response and outcome of first-episode schizophrenia: implications for understanding the pathophysiology of schizophrenia. *J Clin Psychiatry.* 1996;57 (Suppl 9):5-9.
68. Gilbert PL, Harris MJ, McAdams LA, Jeste DV. Neuroleptic withdrawal in schizophrenic patients. A review of the literature. *Arch Gen Psychiatry.* 1995;52(3):173-188.
69. Emsley R, Nuamah I, Hough D, Gopal S. Treatment response after relapse in a placebo-controlled maintenance trial in schizophrenia. *Schizophr Res.* 2012;138(1):29-34.
70. Harrow M, Jobe TH. Does long-term treatment of schizophrenia with antipsychotic medications facilitate recovery? *Schizophr Bull.* 2013;39(5):962-965.
71. Engelhardt DM, Rosen B, Freedman N, Margolis R. Phenothiazines in prevention of psychiatric hospitalization. IV. Delay or prevention of hospitalization - a reevaluation. *Arch Gen Psychiatry.* 1967;16(1):98-101.
72. Wils RS, Gotfredsen DR, Hjorthøj C, et al. Antipsychotic medication and remission of psychotic symptoms 10 years after a first-episode psychosis. *Schizophr Res.* 2017;182:42-48.
73. Moilanen J, Haapea M, Miettunen J, et al. Characteristics of subjects with schizophrenia spectrum disorder with and without antipsychotic medication - a 10-year follow-up of the Northern Finland 1966 Birth Cohort study. *Eur Psychiatry.* 2013;28(1):53-58.
74. Harrow M, Jobe TH. Factors involved in outcome and recovery in schizophrenia patients not on antipsychotic medications: a 15-year multi-follow-up study. *J Nerv Ment Dis.* 2007;195(5):406-414.
75. Volavka J, Vevera J. Very long-term outcome of schizophrenia. *Int J Clin Pract.* 2018;e13094.
76. Wunderink L, Nieboer RM, Wiersma D, Sytema S, Nienhuis FJ. Recovery in remitted first-episode psychosis at 7 years of follow-up of an early dose reduction/discontinuation or maintenance treatment strategy: long-term follow-up of a 2-year randomized clinical trial. *JAMA Psychiatry.* 2013;70(9):913-920.
77. Emsley R. Discontinuing antipsychotic treatment after a first-episode of psychosis: Who, when and how? *Schizophr Res.* 2017 Nov 9. pii: S0920-9964(17)30675-8. doi: 10.1016/j.schres.2017.10.047
78. Czobor P, Van Dorn RA, Citrome L, Kahn RS, Fleischhacker WW, Volavka J. Treatment adherence in schizophrenia: a patient-level meta-analysis of combined CATIE and EUFEST studies. *Eur Neuropsychopharmacol.* 2015;25(8):1158-1166.
79. Czobor P, Volavka J, Derks EM, et al. Insight and hostility as predictors and correlates of nonadherence in the European First Episode Schizophrenia Trial. *J Clin Psychopharmacol.* 2013;33(2):258-261.
80. Mohamed S, Rosenheck R, McEvoy J, Swartz M, Stroup S, Lieberman JA. Cross-sectional and longitudinal relationships between insight and attitudes toward medication and clinical outcomes in chronic schizophrenia. *Schizophr Bull.* 2009;35(2):336-346.
81. Xavier RM, Vorderstrasse A, Keefe RSE, Dungan JR. Genetic correlates of insight in schizophrenia. *Schizophr Res.* 2018;195:290-297.
82. Frese FJ 3rd, Stanley J, Kress K, Vogel-Scibilia S. Integrating evidence-based practices and the recovery model. *Psychiatr Serv.* 2001;52(11):1462-1468.
83. Saad TC. The history of autonomy in medicine from antiquity to principlism. *Med Health Care Philos.* 2018;21(1):125-137.
84. Morant N, Azam K, Johnson S, Moncrieff J. The least worst option: user experiences of antipsychotic medication and lack of involvement in medication decisions in a UK community sample. *J Ment Health.* 2017:1-7.
85. Bartels-Velthuis AA, Visser E, Arends J, et al. Towards a comprehensive routine outcome monitoring program for people with psychotic disorders: The Pharmacotherapy Monitoring and Outcome Survey (PHAMOUS). *Schizophr Res.* 2018 Jan 26. pii: S0920-9964(18)30036-7. doi: 10.1016/j.schres.2018.01.016. [Epub ahead of print].
86. Morrison AP, Hutton P, Shiers D, Turkington D. Antipsychotics: is it time to introduce patient choice? *Br J Psychiatry.* 2012;201:83-84.
87. Volavka J, Vevera J. Very long-term outcome of schizophrenia. *Int J Clin Pract.* 2018:e13094.
88. Cave E. Protecting patients from their bad decisions: rebalancing rights, relationships, and risk. *Med Law Rev.* 2017;25(4):527-553.
89. Tversky A, Kahneman D. Availability: A heuristic for judging frequency and probability. *Cogn Psychol.* 1973;5(2): 207-232.
90. Leucht S. Is there compelling evidence that schizophrenia long-term treatment guidelines should be changed? *World Psychiatry.* 2018;17:166-167.
91. Saposnik G, Redelmeier D, Ruff CC, Tobler PN. Cognitive biases associated with medical decisions: a systematic review. *BMC Med Inform Decis Mak.* 2016;16(1):138.
92. Sohler N, Adams BG, Barnes DM, Cohen GH, Prins SJ, Schwartz S. Weighing the evidence for harm from long-term treatment with antipsychotic medications: A systematic review. *Am J Orthopsychiatry.* 2016;86(5):477-485.
93. Nishikawa T, Hayashi T, Koga I, Uchida Y. Neuroleptic withdrawal with remitted schizophrenics: a naturalistic follow-up study. *Psychiatry.* 2007;70(1):68-79.
94. Prata D, Mechelli A, Kapur S. Clinically meaningful biomarkers for psychosis: a systematic and quantitative review. *Neurosci Biobehav Rev.* 2014;45:134-41.
95. Cassidy CM, Norman R, Manchanda R, Schmitz N, Malla A. Testing definitions of symptom remission in first-episode psychosis for prediction of functional outcome at 2 years. *Schizophr Bull.* 2010;36(5):1001-1008.
96. Davidson M, Saoud J, Staner C, et al. Efficacy and safety of min-101: a 12-week randomized, double-blind, placebo-controlled trial of a new drug in development for the treatment of negative symptoms in schizophrenia. *Am J Psychiatry.* 2017;174(12):1195-1202.
97. Garay RP, Bourin M, de Paillette E, Samalin L, Hameg A, Llorca PM. Potential serotonergic agents for the treatment of schizophrenia. *Expert Opin Investig Drugs.* 2016;25(2):159-170.
98. Vanover K, Dmitrienko A, Glass S, et al. Lumateperone (ITI-007) for the treatment of schizophrenia: placebo-controlled clinical trials and an open-label safety switching. *Schizophr Bull.* 2018;44(Suppl 1):S341.
99. Anand R, Forrest EC, Hartman RD, Graham SM, Faravelli L. Antipsychotic efficacy of evenamide (NW-3509) is due to modulation of glutamatergic dysregulation. *Schizophr Bull.* 2018;44(Suppl 1):S132.

El debate en relación con el tratamiento de mantenimiento con antipsicóticos en la esquizofrenia

Algunos extensos meta-análisis de ensayos de mantenimiento han confirmado que los pacientes que sufren esquizofrenia crónica, aleatorizados a placebo, es probable que experimenten un empeoramiento sintomático más precozmente que los pacientes asignados al azar a un fármaco bloqueador de la dopamina (DA). Estos hallazgos llevaron a los grupos de expertos a plantear guías clínicas de tratamiento, en que se recomienda el tratamiento con fármacos bloqueadores de la DA por períodos que varían de varios años a toda la vida. Las recomendaciones fueron aceptadas por la mayoría, pero no por todos los expertos; algunos de ellos propusieron un manejo terapéutico específico o intermitente mediante el cual los fármacos bloqueadores de la DA se suspenden tras la remisión sintomática, para ser reiniciados en caso de reaparición de los síntomas. El debate entre los manejos terapéuticos continuados y específicos surge de los desacuerdos con respecto a cuestiones científicas y éticas. Científicamente, la discusión se enfoca en la calidad e interpretación de los argumentos que sustentan o desvirtúan la evidencia con respecto a cada opción terapéutica. Por ejemplo, ¿cuál es el porcentaje de individuos que puede mantenerse estable sin fármacos? ¿Cuál es la tasa de individuos que tiene exacerbaciones a pesar del tratamiento de mantenimiento? ¿Cuál es el porcentaje de personas que experimentan efectos adversos relacionados con los medicamentos? ¿Cómo interpretar los resultados de los ensayos abiertos, no aleatorizados? En cuanto a los aspectos éticos, las partes en debate discrepan sobre cómo ponderar el impacto de la disminución del riesgo de exacerbación frente a la certeza de los efectos adversos en la calidad de vida del paciente y cómo llegar a una decisión compartida entre paciente y terapeuta dentro de las limitaciones de la enfermedad mental.

Le maintien du traitement par antipsychotiques dans la schizophrénie en débat.

D'après plusieurs grandes méta-analyses d'études de maintien de traitement, les patients souffrant de schizophrénie chronique et prenant un placebo de façon randomisée, ont plus de risque de voir leurs symptômes s'aggraver précocement que les patients recevant un inhibiteur dopaminergique de façon randomisée. Ces résultats ont conduit un groupe d'experts à émettre des recommandations thérapeutiques qui préconisent un traitement par inhibiteurs dopaminergiques sur plusieurs années, voire indéfiniment. La majorité des experts a accepté ces recommandations, mais certains proposent des approches thérapeutiques ciblées ou intermittentes au cours desquelles les inhibiteurs dopaminergiques sont arrêtés lors de la rémission symptomatique et réintroduits en cas de réapparition des symptômes. Le débat entre les approches continue et ciblée naît de désaccords sur des questions scientifiques et éthiques. Scientifiquement, la discussion est centrée sur la qualité et l'interprétation d'arguments en faveur ou en défaveur de chaque choix thérapeutique. Par exemple, quel pourcentage de patients reste stable sans médicaments ? Quel pourcentage de patients s'aggrave malgré le traitement ? Quel pourcentage de patients souffre d'effets indésirables liés au traitement ? Comment interpréter les résultats des études ciblées ouvertes, non randomisées ? Sur les questions éthiques, la controverse porte sur la façon de mesurer l'impact du risque réduit d'aggravation comparé à la certitude des effets indésirables sur la qualité de vie des patients et sur la façon d'obtenir une décision partagée par le thérapeute et le patient dans le cadre des contraintes de la maladie mentale.