

Self-study of the non-extension sign in an e-learning program improves diagnostic accuracy of invasion depth of early gastric cancer



Authors

Minoru Kato¹, Noriya Uedo¹, Takashi Nagahama², Kenshi Yao², Hisashi Doyama³, Shigetsugu Tsuji³, Takuji Gotoda⁴, Takuji Kawamura⁵, Masahide Ebi⁶, Katsumi Yamamoto⁷, Tomofumi Akasaka⁸, Hajime Takatori⁹, Osamu Handa¹⁰, Takuji Akamatsu¹¹, Jun Nishikawa¹², Takuto Hikichi¹³, Takeshi Yamashina¹⁴, Akira Imoto¹⁵, Yoko Kitamura¹⁶, Tatsuya Mikami¹⁷, Tomoyuki Koike¹⁸, Shuichi Ohara¹⁹, Shinji Kitamura²⁰, Tatsuya Yamaguchi²¹, Tetsu Kinjo²², Taro Inoue²³, Sho Suzuki²⁴, Akihiro Kaneko²⁵, Kingo Hirasawa²⁶, Kyosuke Tanaka²⁷, Takahiro Kotachi²⁸, Kazuhiro Miwa²⁹, Yosuke Toya³⁰, Shoichi Kayaba³¹, Atsushi Ikehata³², Shinya Minami³³, Kazuhiro Mizukami³⁴, Hirohisa Oya³⁵, Nobuyuki Ara³⁶, Yasushi Fukumoto³⁷, Takuya Komura³⁸, Toshiyuki Yoshio³⁹, Ryutarō Morizono⁴⁰, Kenji Yamazaki⁴¹, Yuichi Shimodate⁴², Kohei Yamanouchi⁴³, Noboru Kawata⁴⁴, Masayuki Kumagai⁴⁵, Yoshinori Sato⁴⁶, Kiyotaka Umeki⁴⁷, Daisuke Kawai⁴⁸, Tokuma Tanuma⁴⁹, Maiko Kishino⁵⁰, Jun Konishi⁵¹, Tetsuya Sumiyoshi⁵², Shohei Oka⁵³, Mitsuhiro Kono⁵⁴, Takeshi Sakamoto⁵⁵, Yohei Horikawa⁵⁶, Motoki Ohyauchi⁵⁷, Keiichi Hashiguchi⁵⁸, Yohei Waseda⁵⁹, Toyotaka Kasai⁶⁰, Hiroyuki Aoyagi⁶¹, Hirokazu Oyamada⁶², Masakuni Shoji⁶³, Shu Kiyotoki⁶⁴, Sho Asonuma⁶⁵, Shunsuke Orikasa⁶⁶, Chika Akaishi⁶⁷, Yasuaki Nagami⁶⁸, Satoshi Nakata⁶⁹, Fumiyo Iida⁷⁰, Tatsuma Nomura⁷¹, Kei Tominaga⁷², Kohei Oka⁷³, Yoshinori Morita⁷⁴, Haruhisa Suzuki⁷⁵, Keiji Ozeki⁷⁶, Shiko Kuribayashi⁷⁷, Yoichi Akazawa⁷⁸, Sho Sasaki⁷⁹, Tetsuhiko Mikami⁸⁰, Goro Miki⁸¹, Tatsushi Sano⁸², Hiro Satoh⁸³, Munetaka Nakamura⁸⁴, Wataru Iwai⁸⁵, Hideki Tawa⁸⁶, Masafumi Wada⁸⁷, Daisuke Yoshimura⁸⁸, Yasuhiro Hisanaga⁸⁹, Toshio Shimokawa⁹⁰, Hideki Ishikawa⁹¹

Institutions

- 1 Department of Gastrointestinal Oncology, Osaka International Cancer Institute, Osaka, Japan
- 2 Department of Endoscopy, Fukuoka University Chikushi Hospital, Chikushino, Japan
- 3 Department of Gastroenterology, Ishikawa Prefectural Central Hospital, Kanazawa, Japan
- 4 Division of Gastroenterology and Hepatology, Department of Medicine, Nihon University School of Medicine, Tokyo, Japan
- 5 Department of Gastroenterology, Kyoto Second Red Cross Hospital, Kyoto, Japan
- 6 Department of Gastroenterology, Aichi Medical University School of Medicine, Nagakute, Japan
- 7 Department of Gastroenterology, Japan Community Healthcare Organization, Osaka Hospital, Osaka, Japan
- 8 Department of Gastroenterology and Hepatology, National Hospital Organization Osaka National Hospital, Osaka, Japan
- 9 Department of gastroenterology, Kanazawa University Hospital, Kanazawa, Japan
- 10 Department of Molecular Gastroenterology and Hepatology, Graduate School of Medical Science, Kyoto Prefectural University of Medicine, Kyoto, Japan
- 11 Department of Gastroenterology and Hepatology, Japanese Red Cross Society Wakayama Medical Center, Wakayama, Japan
- 12 Department of Laboratory Science, Yamaguchi University Graduate School of Medicine, Ube, Japan
- 13 Department of Endoscopy, Fukushima Medical University Hospital, Fukushima, Japan
- 14 Department of Gastroenterology and Hepatology, Osaka Red Cross Hospital, Osaka, Japan
- 15 Second Department of Internal Medicine, Osaka Medical College, Takatsuki, Japan
- 16 Center for Digestive and Liver Disease, Department of Gastroenterology, Nara City Hospital, Nara, Japan
- 17 Division of Endoscopy, Hirosaki University Hospital, Hirosaki, Japan
- 18 Division of Gastroenterology, Tohoku University Graduate School of Medicine, Sendai, Japan
- 19 Department of Gastroenterology, Tohoku Rosai Hospital, Sendai, Japan
- 20 Department of Gastroenterology and Oncology, Tokushima University Graduate School of Biomedical Sciences, Tokushima, Japan
- 21 First Department of Internal Medicine, University of Yamanashi, Yamanashi, Japan
- 22 Department of Endoscopy, University of the Ryukyus Hospital, Okinawa, Japan
- 23 Department of Gastroenterology and Hepatology, Kishiwada Tokushukai Hospital, Kishiwada, Japan
- 24 Department of Gastroenterology and Hepatology, Center for Digestive Disease, and Division of Endoscopy, University of Miyazaki Hospital, Miyazaki, Japan
- 25 Department of Gastroenterological Medicine, Kobe Rosai Hospital, Kobe, Japan

- 26 Division of Endoscopy, Yokohama City University Medical Center, Yokohama, Japan
- 27 Department of Endoscopy, Mie University Hospital, Tsu, Japan
- 28 Department of Endoscopy, Hiroshima University Hospital, Hiroshima, Japan
- 29 Department of Gastroenterology, Komatsu Municipal Hospital, Komatsu, Japan
- 30 Department of Gastroenterology, Department of Internal Medicine, School of Medicine, Iwate Medical University, Morioka, Japan
- 31 Department of Gastroenterology, Iwate Prefectural Isawa Hospital, Ohshu, Japan
- 32 Department of Gastroenterology, Iwate Prefectural Central Hospital, Morioka, Japan
- 33 Department of Gastroenterology, Oji General Hospital, Tomakomai, Japan
- 34 Department of Gastroenterology, Oita University, Yufu, Oita, Japan
- 35 Department of Gastroenterology and Hepatology, Saiseikai Suita Hospital, Suita, Japan
- 36 Department of Gastroenterology, National Hospital Organization Sendai Medical Hospital, Sendai, Japan
- 37 Department of Gastroenterology, National Hospital Organization Okayama Medical Center, Okayama, Japan
- 38 Department of Gastroenterology, National Hospital Organization Kanazawa Medical Center, Kanazawa, Japan
- 39 Department of Gastroenterology, Cancer Institute Hospital, Tokyo, Japan
- 40 Section of Gastroenterology, Department of Internal Medicine, Kin-ikyō Chuo Hospital, Sapporo, Japan
- 41 Department of Gastroenterology, Gifu Prefectural General Medical Center, Gifu, Japan
- 42 Department of Gastroenterology and Hepatology, Kurashiki Central Hospital, Kurashiki, Japan
- 43 Department of Gastroenterology, Takagi Hospital, Okawa, Japan
- 44 Division of Endoscopy, Shizuoka Cancer Center, Nagaizumi-cho Sunto-gun, Japan
- 45 Department of Gastroenterology, Yokkaichi Municipal Hospital, Yokkaichi, Japan
- 46 Division of Gastroenterology and Hepatology, Department of Internal Medicine, St. Marianna University School of Medicine, Kawasaki, Japan
- 47 Department of Gastroenterology, Chiba-Nishi General Hospital, Matsudo, Japan
- 48 Department of Gastroenterology, Tsuyama Chuo Hospital, Tsuyama, Japan
- 49 Center for Gastroenterology, Teine-Keijinkai Hospital, Sapporo, Japan
- 50 Department of Gastroenterology, Tokyo Women's Medical University Hospital, Tokyo, Japan
- 51 Department of Gastroenterology, Tochigi Cancer Center, Utsunomiya, Japan
- 52 Department of Gastroenterology, Tonan Hospital, Sapporo, Japan
- 53 Department of Gastroenterology and Hepatology, Okayama University Graduate School of Medicine, Dentistry, and Pharmaceutical Sciences, Okayama, Japan
- 54 Department of Gastroenterology, Higashisumiyoshi Morimoto Hospital, Osaka, Japan
- 55 Department of Gastroenterological Oncology, Hyogo Cancer Center, Akashi, Japan
- 56 Department of Gastroenterology, Hiraka General Hospital, Yokote, Japan
- 57 Department of Gastroenterology, Osaki Citizen Hospital, Osaki, Japan
- 58 Department of Endoscopy, Nagasaki University Hospital, Nagasaki, Japan
- 59 Department of Internal Medicine, Asanogawa General Hospital, Kanazawa, Japan
- 60 Department of Gastroenterology, Fukaya Red Cross Hospital, Saitama, Japan
- 61 Department of Gastroenterology, Fukui Prefectural Hospital, Fukui, Japan
- 62 Department of Gastroenterology, Matsushita Memorial Hospital, Moriguchi, Japan
- 63 Department of Gastroenterology, Faculty of Medicine, Yamagata University, Yamagata, Japan
- 64 Department of Gastroenterology, Shuto General Hospital, Yanai, Japan
- 65 Department of Gastroenterology, South Miyagi Medical Center, Shibata-gun, Japan
- 66 Department of Gastroenterology, Iwate Prefectural Kuji Hospital, Kuji, Japan
- 67 Department of Gastroenterology, Iwate Prefectural Chubu Hospital, Kitakami, Japan
- 68 Department of Gastroenterology, Osaka City University Graduate School of Medicine, Osaka, Japan
- 69 Department of Gastroenterology, Rakuwakai Otowa Hospital, Kyoto, Japan
- 70 Department of Gastroenterology, Japan Community Healthcare Organization, Kanazawa Hospital, Kanazawa, Japan
- 71 Department of Gastroenterology, Kinan Hospital, Minamimuro, Mie, Japan
- 72 Department of Gastroenterology, Kaga Medical Center, Kaga, Japan
- 73 Department of Gastroenterology and Hepatology, North Medical Center, Kyoto Prefectural University of Medicine, Yosa, Japan
- 74 Division of Gastroenterology, Department of Internal Medicine, Kobe University Graduate School of Medicine, Kobe, Japan
- 75 Endoscopy Division, National Cancer Center Hospital, Tokyo, Japan
- 76 Department of Gastroenterology and Metabolism, Nagoya City University Graduate School of Medical Sciences, Nagoya, Japan

- 77 Clinical Investigation and Research Unit, Gunma University Hospital, Maebashi, Japan
- 78 Department of Gastroenterology, Juntendo University, School of Medicine, Tokyo, Japan
- 79 Department of Gastroenterology, Tokuyama Central Hospital, Shunan, Japan
- 80 Department of Gastroenterology, Towada City Hospital, Towada, Japan
- 81 Department of Gastroenterology, Nobeoka Medical Association Hospital, Nobeoka, Japan
- 82 Department of Gastroenterology, Moriguchi Keijinkai Hospital, Moriguchi, Japan
- 83 Department of Gastroenterology, Midori Municipal Hospital, Nagoya, Japan
- 84 Department of Gastroenterology, Hagi Civil Hospital, Hagi, Japan
- 85 Department of Gastroenterology, Miyagi Cancer Center, Natori, Japan
- 86 Department of Gastroenterology, Seikeikai Hospital, Sakai, Japan
- 87 Department of Gastroenterology, National Hospital Organization Kyushu Medical Center, Fukuoka, Japan
- 88 Division of Gastroenterology, Saiseikai Fukuoka General Hospital, Fukuoka, Japan
- 89 Department of Gastroenterology, Ogaki Municipal Hospital, Ogaki, Japan
- 90 Department of Clinical Study Support Center, Wakayama Medical University, Wakayama, Japan
- 91 Department of Molecular-Targeting Cancer Prevention, Kyoto Prefectural University of Medicine, Kyoto, Japan

submitted 10.11.2018

accepted after revision 1.4.2019

Bibliography

DOI <https://doi.org/10.1055/a-0902-4467> |
Endoscopy International Open 2019; 07: E871–E882
© Georg Thieme Verlag KG Stuttgart · New York
eISSN 2196-9736

Corresponding author

Noriya Uedo, MD, Department of Gastrointestinal Oncology, Osaka International Cancer Institute, 3-1-69 Otemae Chuo-ku, Osaka 541-8567, Japan
Fax: +81-6-6945-1900
noriya.uedo@gmail.com

ABSTRACT

Background and study aims We developed an e-learning program for endoscopic diagnosis of invasion depth of early gastric cancer (EGC) using a simple diagnostic criterion called non-extension sign, and the contribution of self-study quizzes to improvement of diagnostic accuracy was evaluated.

Methods We conducted a prospective randomized controlled study that recruited endoscopists throughout Japan. After completing a pretest, the participants watched video lectures and undertook post-test 1. The participants were then randomly allocated to either the self-study or non-self-study group, and participants in the first group completed the self-study program that comprised 100-case quizzes. Finally, participants in both groups undertook post-test 2. The primary endpoint was the difference in post-test 2 scores between the groups. The perfect score for the tests was set as 100 points.

Results A total of 423 endoscopists completed the pretest and were enrolled. Post-test 1 was completed by 415 endoscopists and 208 were allocated to the self-study group and 207 to the non-self-study group. Two hundred and four in the self-study group and 205 in the non-self-study group were included in the analysis. Video lectures improved the mean score of post-test 1 from 72 to 77 points. Participants who completed the self-study quizzes showed significantly better post-test 2 scores compared with the non-self-study group (80 vs. 76 points, respectively, $P < 0.0001$).

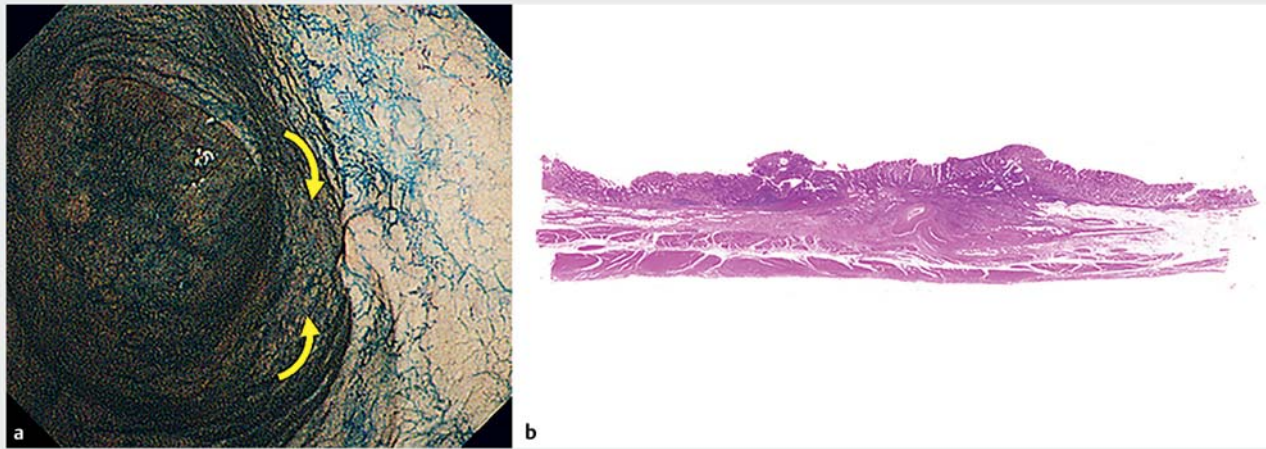
Conclusions Our e-learning program showed that self-study quizzes consolidated knowledge of the non-extension sign and improved diagnostic ability of endoscopists for invasion depth of EGC.

Introduction

Accurate endoscopic diagnosis of invasion depth of early gastric cancer (EGC) is indispensable for treatment decision-making. In the current Japanese gastric cancer treatment guidelines, endoscopic resection, such as endoscopic mucosal resection (EMR) or endoscopic submucosal dissection (ESD), is indicated as standard treatment for patients with clinically intramucosal (T1a) carcinoma. Resection can be regarded as curative for histologically T1a or shallow ($< 500 \mu\text{m}$ from the muscularis muco-

sae) submucosal carcinoma (T1b1), whereas surgery is required for deep ($\geq 500 \mu\text{m}$ from the muscularis mucosae) submucosal carcinoma (T1b2) [1]. Therefore, prediction of T1a-T1b1 and T1b2 carcinoma is of particular importance for determining whether to perform EMR/ESD or surgery.

Although the usefulness of endoscopic ultrasonography (EUS) is reported, conventional white light endoscopy (WLE) is commonly used to predict invasion depth of EGC in clinical practice. One of the problems in acquiring the requisite skill for diagnosis of invasion depth of EGC using WLE is that the various findings suggestive of submucosal cancer are subjective



► **Fig. 1** **a** A representative endoscopic image of early gastric cancer with deep submucosal invasion (T1b2) showing the non-extension sign. The strongly distended gastric wall was gradually elevated toward the submucosa-invasive area (yellow arrows), which had a trapezoid appearance. **b** This endoscopic finding was well-supported by histological findings of the resected specimen. Invasion depth was 1500 μm from the muscularis mucosae in this case.

and the most significant finding is uncertain. To overcome this problem, Nagahama et al. proposed one simple diagnostic criterion called the non-extension sign, which had an accuracy of 96.9% for defining T1b2 carcinoma [2]. The non-extension sign is a phenomenon in which the submucosal invasive area and surrounding mucosa protrude into the lumen, resembling a trapezoidal shape, when the gastric wall is well distended by endoscopic air insufflation (► **Fig. 1**). Unlike the other diagnostic findings of the tumor depth, such as tumor diameter, macroscopic type, and coloration, which were mainly brought by statistical analyses, the non-extension sign has a direct causal relationship with the histopathological feature of deep submucosal invasion. In addition, because assessment of the non-extension sign is always done under the same observational conditions (i. e., sufficient extension of the gastric wall with the air), we can judge presence of the sign rather objectively. Dissemination of knowledge about this diagnostic criterion may improve diagnostic accuracy of endoscopists. Experience is another major issue in acquisition of reliable diagnostic skill. In fact, many endoscopists in low-volume hospitals have limited opportunities to see EGC patients. We hypothesized that, especially for diagnosing invasion depth of EGC by endoscopic appearance, accumulation of experience is important to achieve sufficient diagnostic skill as well as obtaining knowledge of the simplified diagnostic criterion.

We developed an e-learning program that consisted of web-based video lectures and self-study quizzes in which endoscopists could learn the concept of the non-extension sign, and accumulate experience in diagnosing invasion depth of EGC using the non-extension sign. The aim of this study was to investigate whether this accumulation of experience independently contributes to improvement in endoscopists' ability to diagnose invasion depth of EGC.

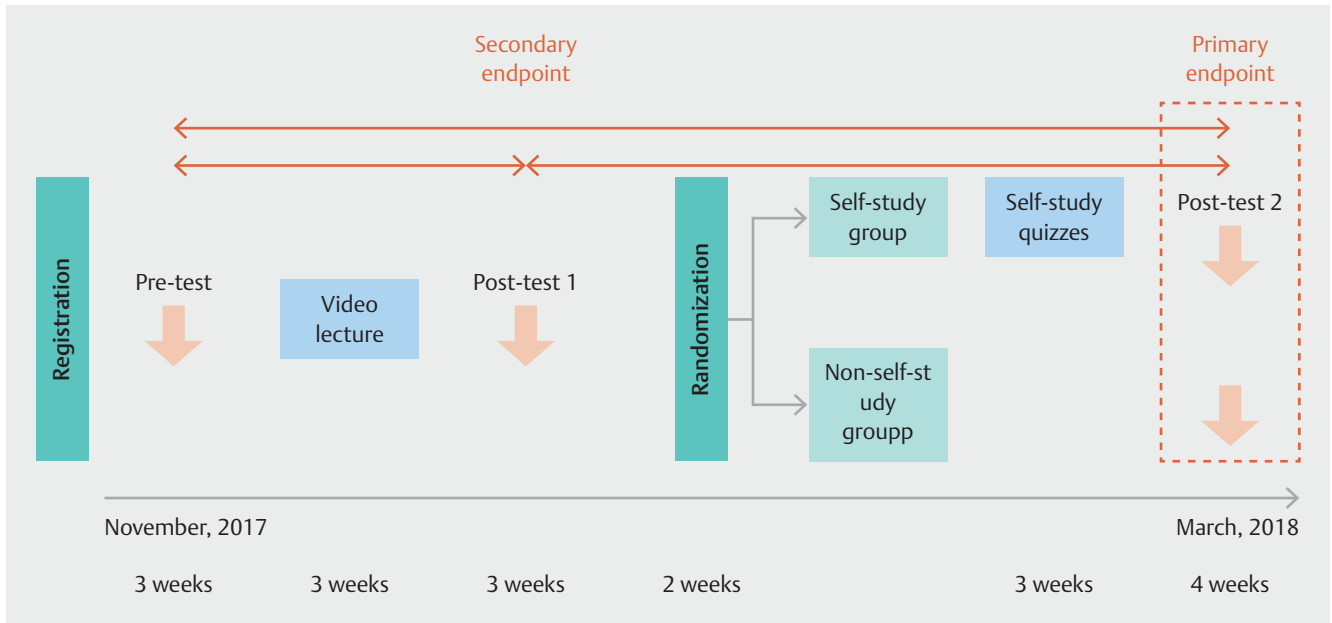
Methods

Study design

We conducted a prospective randomized controlled trial to assess the effectiveness of the e-learning program. This study was designed according to the Consolidated Standards of Reporting Trials (CONSORT) 2010 Statement. The study protocol was approved by the Institutional Review Board of Osaka International Cancer Institute, Japan (No.1605276051, dated July 6, 2016). The study was registered on July 28, 2017 in the University Hospital Medical Network Clinical Trials Registry (UMIN-CTR), which is accepted as a primary registry by the International Committee of Medical Journal Editors (ICMJE) since 2007 (UMIN000028413). Written informed consent was obtained from all participating gastrointestinal endoscopists.

Participants

We recruited gastrointestinal endoscopists from all over Japan between August and November 2017. Inclusion criteria were physicians who engaged in upper gastrointestinal endoscopy and provided consent to participate in the study. Before starting the e-learning program, we collected details of the following characteristics of the participants: age, sex, type of affiliated institutions, years of experience in upper gastrointestinal endoscopy, amount of experience in gastric ESD, and annual numbers of gastric ESDs performed in their affiliated institutions. We created a website where participants were able to take the diagnostic tests and view video lectures and the self-study program. Each participant received an e-mail from a data center with his or her personal login username and password for the website. The data center monitored participants' activity on the website and collected the test results via the Internet. When the deadline for the tasks on the website was nearing, a reminder e-mail was sent to each participant who had not completed the tasks.



► **Fig. 2** Study overview. The primary endpoint was the difference in scores for post-test 2 between the self-study and non-self-study groups. Secondary endpoints were differences in scores between the pretest and post-test 1, post-test 1 and post-test 2, and the pretest and post-test 2 in each group.

Interventions

The participants were asked to take the diagnostic test (pre-test) on the website between 9:00 a.m. November 21, 2017 and 8:59 a.m. December 12, 2017. Then, they were told to watch the video lecture via the Internet between 9:00 a.m. December 12, 2017 and 8:59 a.m. January 5, 2018 (video lecture period). After the video lecture period, between 9:00 a.m. January 5, 2018 and 8:59 a.m. January 26, 2018, the participants took the second diagnostic test (post-test 1). After post-test 1, participants were randomly assigned to the self-study or non-self-study group. Participants in the self-study group were allowed to access the self-study program on the website between 9:00 a.m. February 9, 2018 and 8:59 a.m. March 2, 2018 (self-study period), whereas access to the self-study program was blocked for those in the non-self-study group. Afterwards, participants in both groups undertook another diagnostic test (post-test 2) between 9:00 a.m. March 2, 2018 and 8:59 a.m. March 30, 2018 (► **Fig. 2**). Finally, after completing post-test 2, the self-study program was opened for all study participants to freely access and learn the content.

Diagnostic tests (pretest, post-test 1 and post-test 2)

The diagnostic test comprised endoscopic images of 40 non-consecutive cases of histologically proven EGC (► **Table 1**). We used the same 40 cases (20 T1a-T1b1 lesions without the non-extension sign and 20 T1b2 lesions with the non-extension sign) in the same order for the pretest, post-test 1 and post-test 2; however, this information was not disclosed to the participants. All endoscopic images were taken during actual clinical practice by an expert endoscopist (T.N.) at Fukuoka University

Chikushi Hospital using a high-definition videoendoscopy system (EVIS LUCERA Spectrum System; Olympus CO, Tokyo, Japan) and videogastrosopes (GF-Q240, GIF-Q240Z, GIF-H260 or GIF-H260Z; Olympus CO). We chose two endoscopic images for each EGC case. At least one of the images had sufficient quality to judge the non-extension sign (► **Fig. 3**), that is, an endoscopic image of the EGC observed from an oblique position under the gastric wall sufficiently extended by air insufflation [2].

The participants accessed the diagnostic test on the website via the Internet using their own username and password. In the test, participants were asked to diagnose whether the EGC presented was T1a-T1b1 or T1b2 carcinoma. For each case, they also were asked about presence or absence of the following findings, which had been reported as the signs of T1b2 carcinoma [2–8]: 1) large tumor size (>30 mm in diameter); 2) remarkable redness; 3) enlargement of the converging folds; 4) margin elevation; 5) irregular surface; and 6) non-extension sign. Presence or absence of each of the features in the target EGCs was preliminarily determined by the expert endoscopists (T.N. and N.U.), who had experience in diagnosing EGC invasion depth in more than 1000 cases (► **Table 1**). Once an answer for each question was selected, the question could no longer be accessed. Test scores were marked for correct answers of T1a-T1b1 or T1b2 up to a total of 100 points. As for the assessment of aforementioned 6 endoscopic findings, participant's judgement was regarded as correct if it was matched with the predetermined assessment by the experts (T.N. and N.U.). The correct answers were not revealed until all the participants had completed post-test 2.

► **Table 1** Characteristics of early gastric cancers used in the tests.

	T1a-T1b1	T1b2
	n = 20	n = 20
Median size, (range), mm	20 (10–32)	18 (8–48)
Location, n		
▪ Upper	1	1
▪ Middle/Lower	19	19
Macroscopic appearance, n		
▪ Elevated	4	3
▪ Depressed	13	15
▪ Mixed	3	2
Ulcer or scar, n		
▪ Present	11	12
▪ Absent	9	8
Histological type, n		
▪ Differentiated	17	11
▪ Undifferentiated	3	9
Invasion depth from the muscularis mucosae, n		
▪ 500–999 μ m	N/A	5
▪ $\geq 1000 \mu$ m	N/A	15
Endoscopic findings, n		
▪ Large tumor size (> 30 mm)	1	2
▪ Remarkable redness	4	8
▪ Enlargement of the converging folds	0	0
▪ Margin elevation	7	12
▪ Irregular surface	8	10
▪ Non-extension sign	0	20



► **Fig. 3** An example case of EGC used in the diagnostic tests. Two endoscopic images are shown for one case. This case was EGC with deep submucosal invasion (T1b2). **a** Endoscopic images showing the lesion in en-face view and **b** oblique view are presented. Photograph **b** has sufficient quality to judge the non-extension sign because the oblique view is a more accurate condition for diagnosis than en-face view. EGC, early gastric cancer.

► **Table 2** Characteristics of early gastric cancers used in the self-study quizzes.

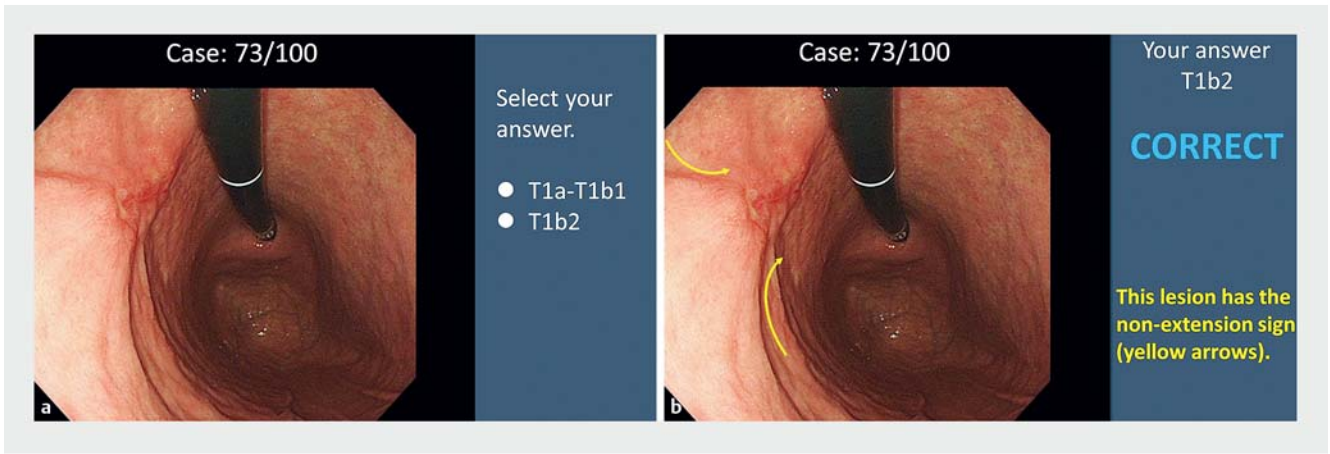
	T1a-T1b1	T1b2
	n = 55	n = 45
Median size, (range), mm	24 (6–70)	22 (6–120)
Location, n (%)		
▪ Upper	6 (11)	8 (18)
▪ Middle/lower	49 (89)	37 (82)
Macroscopic appearance, n (%)		
▪ Elevated	25 (45)	19 (42)
▪ Depressed	30 (55)	11 (24)
▪ Mixed	0 (0)	15 (33)
Ulcer or scar, n (%)		
▪ Present	20 (36)	12 (27)
▪ Absent	35 (64)	33 (73)
Histological type, n (%)		
▪ Differentiated	47 (85)	31 (69)
▪ Undifferentiated	8 (15)	14 (31)
Endoscopic findings, n (%)		
▪ Large tumor size (> 30 mm)	19 (35)	11 (24)
▪ Remarkable redness	4 (7.3)	16 (36)
▪ Enlargement of the converging folds	0 (0)	3 (6.7)
▪ Margin elevation	5 (9.1)	25 (56)
▪ Irregular surface	4 (7.3)	20 (44)
▪ Non-extension sign	0 (0)	45 (100)

Video lecture

The video lecture was given in Japanese by a doctor (T.N.), who first reported usefulness of the non-extension sign [2]. The video lecture was recorded by adding voice narrations to PowerPoint slides (Microsoft Corporation, Redmond, Washington, United States). The lecture was composed of two chapters. In the first chapter, the principle and basics of the non-extension sign were explained, and in the second chapter, the actual endoscopic techniques for capturing and assessing the endoscopic images and pointers for accurate diagnosis of the non-extension sign were explained. Each lecture was approximately 30 minutes. All participants were required to watch these web-based lecture videos at least once, and thereafter, as many times as they wanted until the end of the video lecture period.

Self-study quizzes

Self-study quizzes consisted of endoscopic images of 100 cases of EGC (► **Table 2**). A single representative endoscopic image was prepared for each lesion. The invasion depth of all lesions used in the self-study quizzes had been histologically confirmed as either T1a-T1b1 or T1b2. The 100 endoscopic images used in



► **Fig. 4** An example image of EGC with deep submucosal invasion (T1b2) used in the self-study quizzes. The quiz question was translated into English for this manuscript. **a** The first slide shows one EGC image with a question asking the user to select whether the invasion depth was T1a-T1b1 or T1b2. **b** The second slide appeared immediately after a participant clicked the answer and showed whether the answer was correct or incorrect. If the lesion was positive for the non-extension sign, yellow arrows indicated the position of the sign in the same endoscopic image on the second slide. EGC, early gastric cancer.

the self-study quizzes were taken by expert endoscopists at Fukuoka University Chikushi Hospital (T.N.) and Osaka International Cancer Institute (N.U.) under the same conditions as the diagnostic test images. There was no overlap of images between the self-study quizzes and the diagnostic tests. The 100 cases for the self-study quizzes consisted of 55 cases of T1a-T1b1 carcinoma and 45 of T1b2 carcinoma that were arranged randomly. Each case had a pair of slides of the endoscopic images, and in the first slide, the participants were asked to answer whether the invasion depth was T1a-T1b1 or T1b2 (► **Fig. 4a**). Then, after clicking the answer button for either T1a-T1b1 or T1b2 on the first slide, the second slide immediately showed whether the answer was correct or incorrect (► **Fig. 4b**). In addition, if the lesion was positive for the non-extension sign, the site of the non-extension sign was indicated in the same endoscopic image on the second slide (► **Fig. 4b**). All 100 quizzes in the self-study were required to be completed at least once. The self-study quizzes were open until the end of the self-study period and the participants were allowed to repeat the quizzes as many times as they wanted. The number of times that the self-study was undertaken by each participant was recorded.

Outcomes

The primary endpoint was the difference in the scores for post-test 2 between the self-study and non-self-study groups. Secondary endpoints were differences in the scores between the pretest and post-test 1, post-test 1 and post-test 2, and the pretest and post-test 2 in each group (► **Fig. 2**). In post-test 2, sensitivity and specificity of the participants' diagnosis of T1b2 carcinoma were compared between the self-study and the non-self-study groups. The correct judgement rates for presence/absence of the six endoscopic signs suggesting T1b2 carcinoma (i.e., large tumor size, remarkable redness, enlargement of the converging folds, margin elevation, irregular surface, and the

non-extension sign) in post-test 2 were also compared between the self-study and non-self-study groups.

For the self-study group, we compared: 1) scores of post-test 2 between participants who completed the self-study quizzes more than twice and those who completed only once; and 2) changes in scores between the pretest and post-test 2 among less experienced and experienced endoscopists. Experience of endoscopy was divided into less experienced (<7 years) and experienced (≥7 years) groups based on median years of experience in upper gastrointestinal endoscopy (6 years) in this study cohort.

We divided the 20 T1b2 lesions used in the diagnostic test into two subgroups according to submucosal invasion depth (i.e., 5 lesions for 500–999 μm group and 15 lesions for ≥1000 μm group, ► **Table 1**), and compared the correct answer rate of self-studied participants among the two subgroups in post-test 2.

Sample size calculation

A preliminary study conducted by five evaluators in the Osaka International Cancer Institute who had knowledge of the non-extension sign but had little diagnostic experience using the non-extension sign in clinical practice showed a mean score of around 80 points for the test used in this study. Therefore, we assumed that the mean score for post-test 2 in the non-self-study group would be 80 points and that self-study would improve it to 85 points. We assumed that dispersion of the participants' score results might be rather large, as we intended to recruit endoscopists with varied experience levels. We therefore estimated the standard deviation at 18. Power analysis indicated that more than 410 participants were needed in all, assuming a 5% significance level and statistical power of 80% using a two-sided equivalence.

Randomization

The randomization sequence was generated by computer software in the data center, and randomized allocation was performed by the doctor (H.I.) at the data center, who was not blinded to allocation. Stratified permuted block randomization was used, with the participants' post-test 1 score and years of experience in upper gastrointestinal endoscopy as pre-adjustment factors. The physician who performed randomized allocation did not know the participants' background information and the allocation was performed automatically based on the above-mentioned stratification rule, which did not cause any bias for randomized allocation.

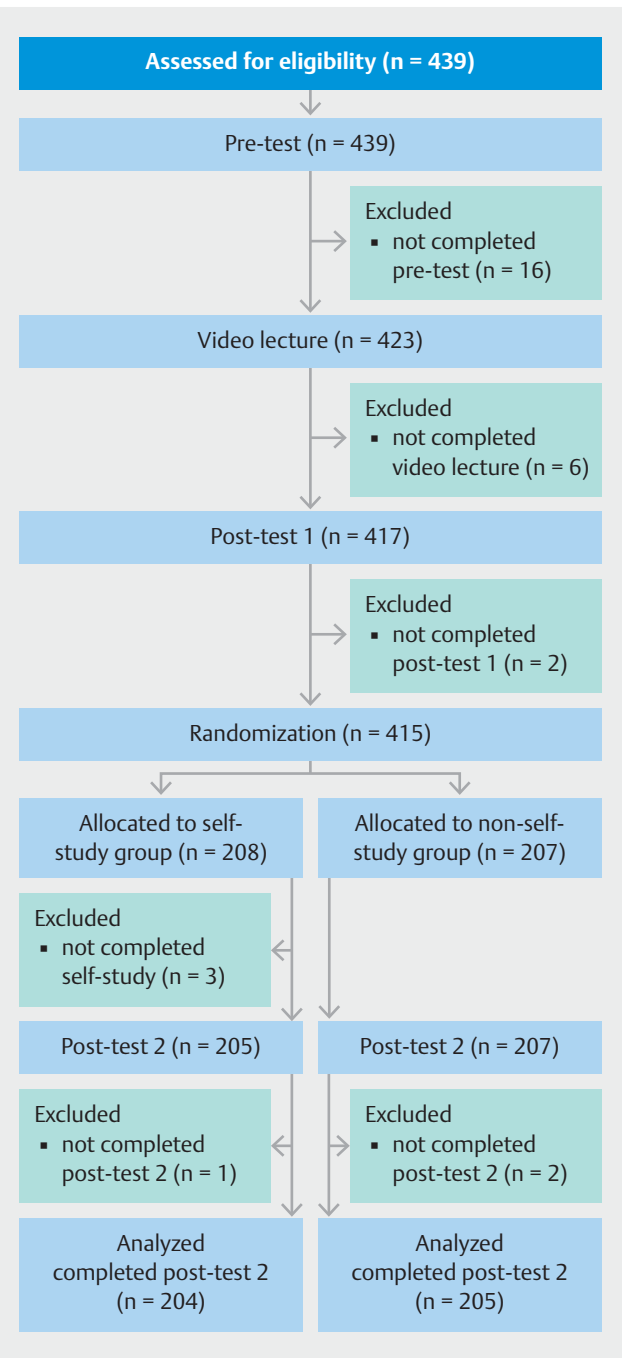
Statistical analysis

All analyses were performed using JMP Pro version 13 (SAS Institute, Cary, North Carolina, United States). Scores for post-test 2 in the two groups were compared using unpaired Student's *t*-test. Paired Student's *t*-test was used to compare scores for the diagnostic tests in each group. Multiple comparisons were corrected using Bonferroni's method. Mean sensitivity and specificity of the participants' diagnosis of T1b2 carcinoma in the two groups were compared using unpaired Student's *t*-test. Mean correct judgement rates of the 6 endoscopic signs were compared using unpaired Student's *t*-test. Unpaired Student's *t*-test was used to compare the post-test 2 scores between the participants who undertook the self-training program more than twice and those who undertook it only once. Comparison of the score differences between the pretest and post-test 2 among less experienced and experienced endoscopists in the self-study group was performed by using unpaired Student's *t*-test. Mean correct T-staging rates between 500–999 μm group and $\geq 1000 \mu\text{m}$ group were compared by using unpaired Student's *t*-test. $P < 0.05$ was considered to be statistically significant.

Results

Participant flow and characteristics: recruitment, baseline data, numbers analyzed

Among 439 endoscopists assessed for eligibility, 423 from 93 institutions completed the pretest and were included in this study. Of these, 417 participants viewed the video lectures. Post-test 1 was completed by 415 participants, and 208 were allocated to the self-study group and 207 to the non-self-study group. After allocation, 204 participants in the self-study group completed the self-study quizzes and post-test 2, and 205 participants in the non-self-study group completed post-test 2 (► Fig. 5). Thirty participants who missed the deadline for each study period were excluded from the analysis and data from 204 participants in the self-study group and 205 in the non-self-study group were analyzed. The groups were well balanced with regard to baseline characteristics (► Table 3).



► Fig. 5 Participant flow.

Study outcomes

The mean [95% confidence interval (CI)] post-test 2 score was significantly higher in the self-study group (80.3 [79.3–81.3]) than in the non-self-study group (75.8 [74.5–77.0], $P < 0.0001$, ► Table 4). This indicated that self-study subsequent to the video lectures improved knowledge for diagnosis of invasion depth of EGC compared with viewing the video lecture alone.

In both the self-study and non-self-study groups, mean (95% CI) post-test 1 score was significantly improved by the video

► **Table 3** Characteristics of 409 participants.

	Self-study group	Non-self-study group
	n = 204	n = 205
Age, n		
▪ <35 years	111	115
▪ ≥35 years	93	90
Gender, n		
▪ Male	177	175
▪ Female	27	30
Years of experience in upper gastrointestinal endoscopy, n		
▪ <7	107	103
▪ ≥7	97	102
Numbers of experience in gastric ESD, n		
▪ <30	106	103
▪ ≥30	98	102
Annual numbers of gastric ESD in affiliated institutions, n		
▪ <100	73	75
▪ ≥100	131	100
ESD, endoscopic submucosal dissection		

lecture (72.1 [70.9–73.4] to 77.4 [76.2–78.5], $P < 0.0001$; and 71.4 [70.3–72.6] to 77.1 [76.0–78.3], $P < 0.0001$, respectively, ► **Fig. 6**). Mean post-test 2 score was significantly improved after completing the self-study (77.4 [76.2–78.5] to 80.3 [79.3–81.3], $P < 0.0001$, ► **Fig. 6**), whereas it was significantly reduced in the non-self-study group (77.1 [76.0–78.3] to 75.8 [74.5–77.0], $P = 0.012$, ► **Fig. 6**). This suggested that self-study

consolidated the participants' knowledge acquired from the video lecture.

In post-test 2, the mean (95% CI) sensitivity and specificity for diagnosis of T1b2 carcinoma were 80.3% (78.6%–82.0%) and 80.3% (78.2%–82.4%) in the self-study group, and 65.8% (63.3%–68.3%) and 85.8% (83.8%–87.7%) in the non-self-study group (► **Table 4**). Sensitivity (i. e., the ability to correctly detect T1b2 carcinoma) was effectively improved by the self-study quizzes ($P < 0.0001$).

Among the six endoscopic findings indicating T1b2 carcinoma, the non-extension sign was the only one where the mean (95% CI) correct judgement rate was significantly higher in the self-study group (79.3% [78.1%–80.4%]) than in the non-self-study group (73.1% [71.9%–74.3%], $P < 0.0001$, ► **Table 4**).

In the self-study group, 30 of 204 (14.7%) participants completed the self-study quizzes more than twice. The mean (95% CI) post-test 2 score was significantly higher in those who undertook the self-study quizzes more than twice (83.0 [80.3–85.7]) compared with the remaining 174 participants who undertook the quizzes only once (79.9 [78.8–81.0]) ($P = 0.0336$). Besides, in the self-study group, the mean (95% CI) values of improvement of the scores from the pretest to post-test 2 were significantly higher in less experienced endoscopists than in experienced endoscopists ($\Delta 9.44$ [7.56–11.3] versus $\Delta 6.80$ [4.83–8.78], $P = 0.029$).

Among the 20 T1b2 cases used in the diagnostic test (post-test 2), the 500–999- μm group had significantly lower correct T-staging rates than the $\geq 1000\mu\text{m}$ group (61.4% [95% CI, 45.7–77.1] versus 86.8% [95% CI, 77.7–95.9], $P = 0.0088$, [results of the self-study group]).

Discussion

In this randomized controlled study, we demonstrated that diagnostic experience accumulated by the self-study quizzes significantly improved the diagnostic ability of endoscopists for in-

► **Table 4** Summaries of primary and secondary outcomes.

	Self-study group	Non-self-study group	P value
Scores of the post-test 2 (Diagnostic accuracy for the invasion depth)	80.3 (79.3–81.3)	75.8 (74.5–77.0)	<0.0001
Proportion of correct judgement for endoscopic appearances			
Large (>30 mm) tumor size (%)	73.8 (72.3–75.3)	73.4 (71.9–74.9)	0.723
Remarkable redness (%)	77.1 (76.1–78.1)	76.4 (75.4–77.3)	0.288
Enlargement of the converging folds (%)	88.8 (87.3–90.3)	87.2 (85.6–88.7)	0.143
Margin elevation (%)	62.7 (61.7–63.7)	62.3 (61.3–63.3)	0.641
Irregular surface (%)	65.9 (64.9–66.8)	66.2 (65.2–67.2)	0.639
Non-extension sign (%)	79.3 (78.1–80.4)	73.1 (71.9–74.3)	<0.0001
Diagnostic performance for submucosal invasion			
Sensitivity (%)	80.3 (78.6–82.0)	65.8 (63.3–68.3)	<0.0001
Specificity (%)	80.3 (78.2–82.4)	85.8 (83.8–87.7)	0.0002
NOTE: Values are expressed as mean (95% confidence interval).			

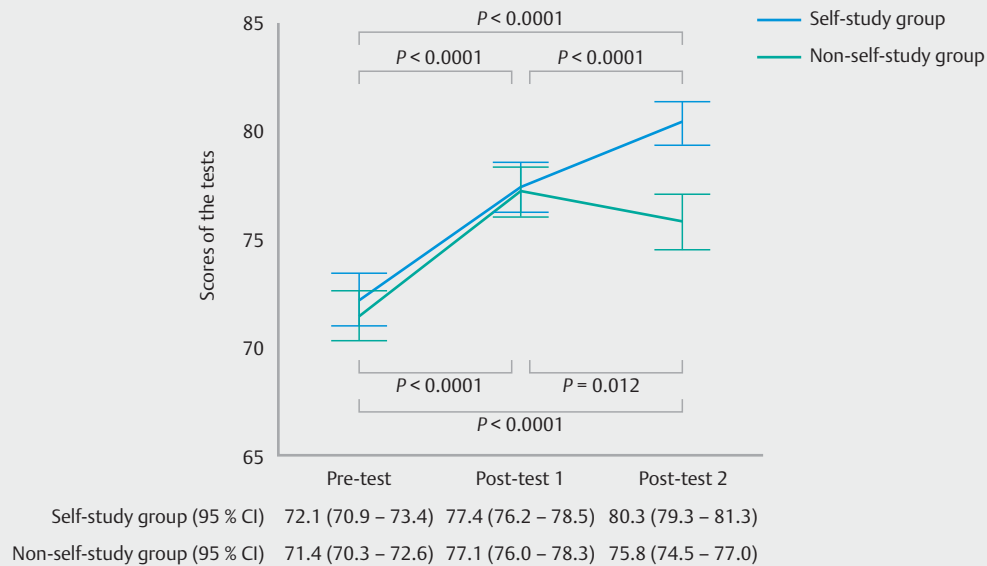


Fig. 6 Changes in mean scores with 95% confidence intervals for the pretest, post-test 1 and the post-test 2. *P* values were for comparisons between two tests. In the self-study and non-self-study groups, mean scores for post-test 2 (80.3 and 75.8) and post-test 1 (77.4 and 77.1) were significantly higher than for the pretest (72.1 and 71.4; $P < 0.0001$). In the self-study group, the mean score for post-test 2 (80.3) was significantly higher than for post-test 1 (77.4; $P < 0.0001$). In the non-self-study group, the mean score for post-test 2 (75.8) was significantly lower than for post-test 1 (77.1; $P = 0.012$). $P < 0.016$ was considered to be statistically significant after correction using Bonferroni's method.

vasion depth of EGC. Although the video lecture significantly improved diagnostic accuracy of the web tests, such a learning effect did not last long without accumulation of experience. In the real world, endoscopists gain knowledge about endoscopy from textbooks, research articles or academic meetings; however, not all endoscopists have sufficient ongoing opportunities to use their knowledge and accumulate experience in their own clinical practice. In this context, our approach of inclusion of content that enables endoscopists to acquire virtual experiences in an e-learning program has substantial value.

Although the non-extension sign was reported to be a reliable marker for determination of tumor depth of EGC, the previous study was conducted by endoscopists in a single institution who were already familiar with using the non-extension sign [2]. Our study, in which >400 endoscopists from 93 institutions participated, showed significant improvement in diagnosing invasion depth of EGC following the web-based e-learning program about the non-extension sign. In addition, among the various endoscopic findings suggesting T1b2 carcinoma, the non-extension sign was the only one where the identification rate became significantly higher by the self-study quizzes. On the other hand, participants' ability to identify other classical endoscopic findings of T1b2 cancer did not improve even after reviewing many images of EGCs on the self-study material. Because instruction about existence of the non-extension sign was only provided in the self-study quizzes, we can not reach a definitive conclusion, but the abovementioned results may indicate that the non-extension sign can be learned more easily than the other classical endoscopic findings and thus may improve endoscopists' diagnostic ability. We consider that the

learning effect of our self-study material was not a result of merely showing many images of EGCs but also the availability of repetitive training on how to identify the non-extension sign.

In this study, diagnostic accuracy of the post-test 2 in the self-study group (80.3%) was not as high as that in the original study by Nagahama et al (96.9%) [2]. This might be partly explained by the fact that endoscopic diagnosis was performed real-time in the original study; however, in this study, participants had to estimate invasion depth of EGCs by assessing only two recorded images.

In this study, we elucidated how studying the non-extension sign influenced diagnostic performance in T-staging, not only from the viewpoint of accuracy but also in sensitivity and specificity. More accurate T-staging in the self-study group was mainly a result of improvement in sensitivity for T1b2 staging (80.3% in the self-study group versus 65.8% in the non-self-study group). Clinically, this effect can be expected to reduce excessive ESD, which may result in additional gastrectomy with lymph node dissection, by 14.5 percentage points by reducing underestimation of invasion depth of EGCs. In this study, however, specificity for T1b2 staging (i.e., the ability to correctly exclude the T1a-T1b1 lesions) in the self-study group (80.3%) was lower than in the non-self-study group (85.8%), which may, in turn, increase the possibility of over-surgery. Tsujii et al. reported that EUS could salvage 60% of the T1a-T1b1 lesions that are over-diagnosed as T1b2 by conventional WLE [5]. Practically, we therefore recommend adding EUS evaluation of lesions positive for non-extension sign to avoid over-surgery.

To clarify the limitation of depth prediction using the non-extension sign, we compared correct T-staging rates between shallow T1b2 lesions (500–999 μm) and deep T1b2 lesions ($\geq 1000 \mu\text{m}$). The results revealed that correct T-staging rate was significantly lower in shallow T1b2 lesions even after the participants were exposed to our e-learning programs. Identification of minute non-extension sign in those shallow T1b2 lesions might be rather difficult.

The most important point when assessing presence of the non-extension sign in a target EGC is observation of the lesion from an oblique position with sufficient extension of the gastric wall (► **Fig. 3b**). When we observe the lesion from the frontal view, mucosal elevation made by invasive cancer cells is difficult to recognize (► **Fig. 3a**), which may lead to the underestimation of invasion depth. And when we observe the lesion with a small amount of air in the stomach, surface irregularity or margin elevation can be excessively emphasized, which may lead to the overestimation of invasion depth. As we show in ► **Fig. 3**, in some cases in the diagnostic test, we intentionally included one endoscopic photo taken with a frontal view or with insufficient air volume. The correct answer rates in such cases were generally low in the pretest, but improved over 20 percentage points in post-test 2 after the participants understood the appropriate conditions under which to evaluate the non-extension sign in our e-learning program (results are not shown).

An e-learning program is now recognized as a useful educational tool in the health professions, and how to construct effective learning content is a matter of interest [9]. Before starting this trial, we had already developed an e-learning program for how to detect EGC with WLE [10, 11] and how to differentiate EGC from benign lesions using magnifying narrow band imaging (NBI) [12]. Both e-learning programs were proven in large randomized controlled trials to be useful for endoscopists to acquire diagnostic knowledge. In those trials, because we provided both video lectures and self-study quizzes, how either of the contents accounted for the participants' improvement was unclear. However, in the current study, the educational effect of the self-study was clarified as reinforcement of acquired knowledge. We also found that the learning effect was reduced when endoscopists did not accumulate experience by continuing the practice using the self-study quizzes.

There were a few limitations to this study. First, we did not evaluate improvement in diagnostic accuracy in actual clinical practice. In the diagnostic test, we did not include lesions in which the non-extension sign was not effective for T-staging (i.e., false-positive lesions, false-negative lesions, or low-quality images). Improvement in test score, therefore, might not directly reflect improvement in diagnostic accuracy in the real clinical setting. We need to validate the effectiveness of this e-learning program in real clinical practice. Second, two cases of EGC that had already been used in the previous report [2] were unintentionally included in our diagnostic test. A few participants might have been aware of the fact; however, considering the large number of participants (>400) in this randomized controlled trial, we assume it did not affect our results greatly. Third, we constructed this e-learning program in Japanese and

did not invite endoscopists outside Japan. To generalize the results of our study, an international trial using an English version of the e-learning program is required.

Conclusion

In conclusion, our e-learning program for the non-extension sign that comprised video lectures and self-study quizzes, supplying both knowledge and experience, improved endoscopists' ability to diagnose invasion depth of EGC. We believe that this concept may be applicable to education for various types of endoscopic diagnoses.

Acknowledgements

This research was supported by a research grant from Central Research Institute for Endoscopy, Fukuoka University. The authors thank Ms. Ryoko Yanagida and Ms. Asuka Mizushima (Department of Molecular-Targeting Cancer Prevention, Kyoto Prefectural University of Medicine) for their assistance with data management. We are sincerely grateful to Mr. Yuichi Takahashi (FAST Inc., Tokyo, Japan) for his engineering work to construct the website and the e-learning system used in this study. We thank Cathel Kerr, PhD, from Edanz Group (www.edanzediting.com/ac) for editing a draft of this manuscript.

Competing interests

None

References

- [1] Japanese Gastric Cancer Association. Japanese gastric cancer treatment guidelines 2014 (ver. 4). *Gastric Cancer* 2017; 20: 1–9
- [2] Nagahama T, Yao K, Imamura K et al. Diagnostic performance of conventional endoscopy in the identification of submucosal invasion by early gastric cancer: the “non-extension sign” as a simple diagnostic marker. *Gastric Cancer* 2017; 20: 304–313
- [3] Abe S, Oda I, Shimazu T et al. Depth-predicting score for differentiated early gastric cancer. *Gastric Cancer* 2011; 14: 35–40
- [4] Sano T, Okuyama Y, Kobori O et al. Early gastric cancer endoscopic diagnosis of depth of invasion. *Dig Dis Sci* 1990; 35: 1340–1344
- [5] Tsujii Y, Kato M, Inoue T et al. Integrated diagnostic strategy for the invasion depth of early gastric cancer by conventional endoscopy and EUS. *Gastrointest Endosc* 2015; 82: 452–459
- [6] Choi J, Kim SG, Im JP et al. Comparison of endoscopic ultrasonography and conventional endoscopy for prediction of depth of tumor invasion in early gastric cancer. *Endoscopy* 2010; 42: 705–713
- [7] Yanai H, Noguchi T, Mizumachi S et al. A blind comparison of the effectiveness of endoscopic ultrasonography and endoscopy in staging early gastric cancer. *Gut* 1999; 44: 361–365
- [8] Choi J, Kim SG, Im JP et al. Endoscopic prediction of tumor invasion depth in early gastric cancer. *Gastrointest Endosc* 2011; 73: 917–927
- [9] Pimentel-Nunes P, Buxbaum J. Internet based e-learning systems: a tool for the future in endoscopy. *Endoscopy* 2017; 49: 936–937

- [10] Yao K, Uedo N, Muto M et al. Development of an E-learning system for the diagnosis of early gastric cancer: an international multicenter randomized controlled trial. *EBioMedicine* 2016; 9: 140–147
- [11] Yao K, Uedo N, Muto M et al. Development of an e-learning system for teaching endoscopists how to diagnose early gastric cancer: basic principles for improving early detection. *Gastric Cancer* 2017; 20: S28–S38
- [12] Nakanishi H, Doyama H, Ishikawa H et al. Evaluation of an e-learning system for diagnosis of gastric lesions using magnifying narrow-band imaging: a multicenter randomized controlled study. *Endoscopy* 2017; 49: 957–967