

Fig. S1 Immunofluorescence antibody test of transgenic *Tetrahymena* cells (pD5H8-MCPIB, pD5H8-MCPIIB) using normal rabbit serum. Scale bar = 20  $\mu$ m.

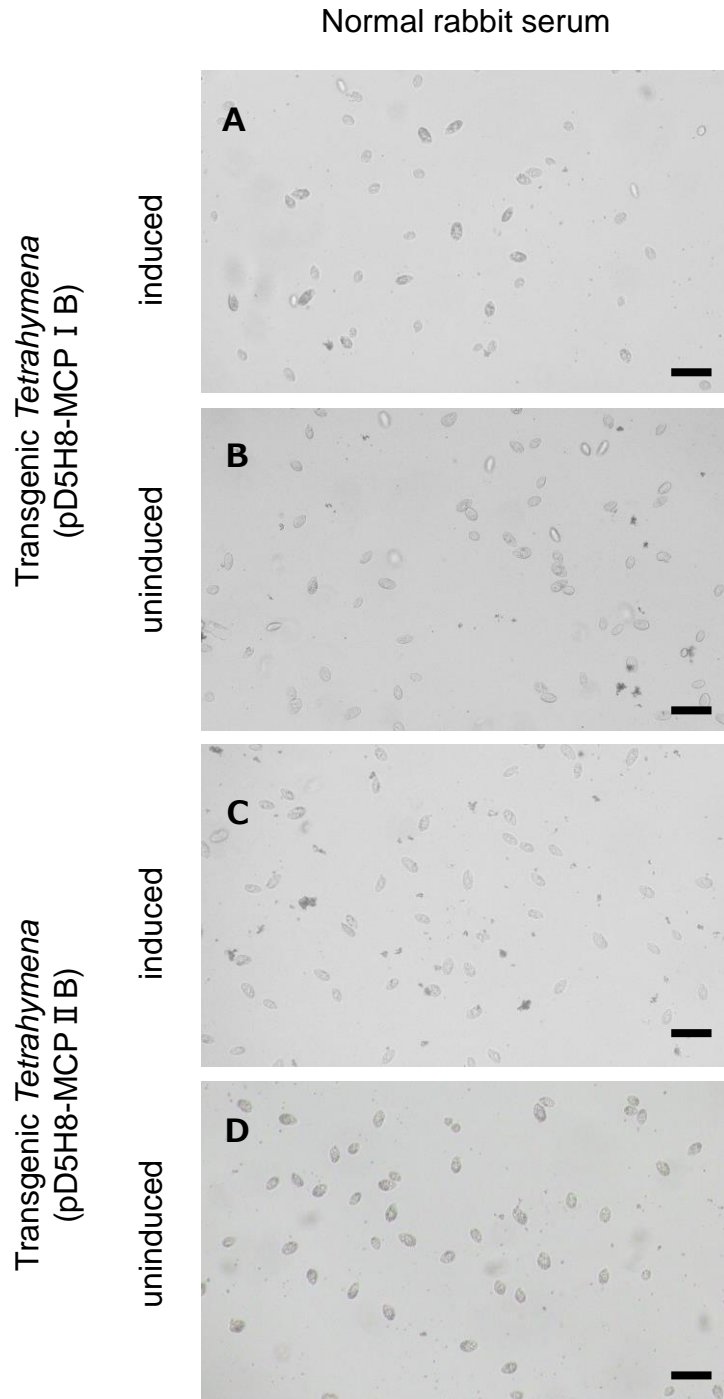


Fig. S2 Immobilization/aggregation assay of transgenic *Tetrahymena* cells incubated with normal rabbit serum. Expression-induced (A) or uninduced (B) transgenic *Tetrahymena* cells (pD5H8-MCPIB) incubated with normal rabbit serum. Expression-induced (C) or uninduced (D) transgenic *Tetrahymena* cells (pD5H8-MCPIIB) incubated with normal rabbit serum. Scale bar = 20  $\mu$ m.