


REVIEW

Long-term risk of cardiovascular mortality in lymphoma survivors: A systematic review and meta-analysis

Devon J. Boyne^{1,2}  | Alexis T. Mickle^{1,2} | Darren R. Brenner^{1,2,3} |
Christine M. Friedenreich^{1,2,3} | Winson Y. Cheung^{2,3} | Karen L. Tang⁴ |
Todd A. Wilson² | Diane L. Lorenzetti² | Matthew T. James^{2,4} |
Paul E. Ronsley² | Doreen M. Rabi^{2,4,5}

¹Department of Cancer Epidemiology and Prevention Research, Cancer Control Alberta, Alberta Health Services, Calgary, AB, Canada

²Department of Community Health Sciences, Cumming School of Medicine, University of Calgary, Calgary, AB, Canada

³Department of Oncology, Cumming School of Medicine, University of Calgary, Calgary, AB, Canada

⁴Department of Medicine, Cumming School of Medicine, University of Calgary, Calgary, AB, Canada

⁵Department of Cardiac Sciences, Cumming School of Medicine, University of Calgary, Calgary, AB, Canada

Correspondence

Doreen Rabi, Department of Medicine, Cumming School of Medicine, University of Calgary, Calgary, AB, Canada.
Email: drabi@ucalgary.ca

Funding information

University of Calgary Ruby Doctoral Recruitment Scholarship; Faculty of Graduate Studies Doctoral Scholarship; Queen Elizabeth II Graduate Scholarship; Alberta Innovates Health Solutions Health Senior Scholar Award; Alberta Cancer Foundation Weekend to End Women's Cancers Breast Cancer Chair; Roy and Vi Baay Chair in Kidney Research Award

Abstract

Cardiovascular disease has been identified as one of the late complications of cancer therapy. The purpose of this study was to quantify the long-term risk of cardiovascular mortality among lymphoma survivors relative to that of the general population. A systematic review and meta-analysis were conducted. Articles were identified in November 2016 by searching EMBASE, MEDLINE, and CINAHL databases. Observational studies were included if they assessed cardiovascular mortality in patients with lymphoma who survived for at least 5 years from time of diagnosis or if they had a median follow-up of 10 years. A pooled standardized mortality ratio (SMR) was estimated using a DerSimonian and Laird random-effects model. The Q and I^2 statistics were used to assess heterogeneity. Funnel plots and Begg's and Egger's tests were used to evaluate publication bias. Of the 7450 articles screened, 27 studies were included in the systematic review representing 46 829 Hodgkin and 14 764 non-Hodgkin lymphoma survivors. The pooled number of deaths attributable to cardiovascular disease among Hodgkin and non-Hodgkin disease was estimated to be 7.31 (95% CI: 5.29-10.10; $I^2 = 95.4\%$) and 5.35 (95% CI: 2.55-11.24; $I^2 = 94.0\%$) times that of the general population, respectively. This association was greater among Hodgkin lymphoma survivors treated before the age of 21 (pooled SMR = 13.43; 95% CI: 9.22-19.57; $I^2 = 78.9\%$). There was a high degree of heterogeneity and a high risk of bias due to confounding in this body of literature. Lymphoma survivors have an increased risk of fatal cardiovascular events compared to the general population and should be targeted for cardiovascular screening and prevention campaigns.

KEYWORDS

cardiovascular disease, Hodgkin, lymphoma, meta-analysis, mortality, standardized mortality ratio, survivors, systematic review

Precis: Lymphoma survivors have an increased risk of fatal cardiovascular events compared to the general population, particularly if diagnosed with Hodgkin lymphoma before the age of 21. Persons with a prior history of lymphoma should be targeted for cardiovascular screening and prevention campaigns.

This is an open access article under the terms of the Creative Commons Attribution License, which permits use, distribution and reproduction in any medium, provided the original work is properly cited.

© 2018 The Authors. *Cancer Medicine* published by John Wiley & Sons Ltd.

1 | BACKGROUND

The success and continued progress of cancer control strategies have resulted in a rise in the number of long-term cancer survivors.^{1,2} This growing patient population brings with it a set of unique healthcare needs that are becoming increasingly apparent. Mounting epidemiologic evidence suggests that individuals previously treated for cancer have an increased risk of several adverse health outcomes later in life which include secondary cancers, cardiovascular disease, fertility issues, sexual dysfunction, endocrine disorders, neurocognitive impairment, chronic fatigue, and various psychosocial problems.³⁻¹⁶ Thoroughly understanding these late effects can help to inform ongoing efforts to develop and implement prevention and screening programs aimed at managing and mitigating the burden of chronic disease associated with cancer and its treatment.¹⁷⁻²⁵

Hodgkin and non-Hodgkin lymphoma are hematological malignancies common in both children and adults.^{1,2} Advances in cancer treatment have led to improved survival rates for both Hodgkin and non-Hodgkin lymphoma patients with current 5-year survival estimates at approximately 85% and 65%, respectively.^{1,2,26-29} Treatment for lymphoma typically involves chemotherapy alone or in combination with radiation, stem cell transplantation, or biologic therapies.¹ Although efficacious in the control of lymphoma, some of these therapeutic options are now recognized as causative agents in cardiovascular disease.³⁰⁻³² Given the increasing rates of survival, the younger age of onset, and the potential for cardiotoxic treatment effects, quantifying the long-term risk of cardiovascular mortality among patients with lymphoma is a timely and important task.

Although there have been systematic reviews and meta-analyses investigating the risk of metabolic syndrome³³ and the prevalence of cardiovascular disease³⁴ in lymphoma survivors, the long-term risk of fatal cardiovascular outcomes remains unknown.³⁵⁻⁴⁰ We conducted a systematic review and meta-analysis of the observational epidemiologic literature to quantify the risk of cardiovascular mortality among lymphoma survivors relative to the general population. We hypothesized that lymphoma survivors would have an increased risk of dying from cardiovascular disease compared to the general population.

2 | METHODS

A protocol for this review was published in the International Prospective Register of Systematic Reviews (PROSPERO) database (registration number: CRD42016052342). This systematic review follows the reporting guidelines proposed by the Meta-analysis of Observational Studies in Epidemiology (MOOSE) group.⁴¹

2.1 | Search strategy and information sources

EMBASE, MEDLINE, and CINAHL were searched from inception to 22 November 2016. Our search strategy combined terms from 4 themes related to our research question: (1) lymphoma, (2) long-term survivor; (3) cardiovascular disease; and (4) observational study. Terms were searched as both keywords (title/abstract words) and subject headings as appropriate. The observational study designs filter included in this search was adapted from 2 previously published filters.^{42,43} No restrictions were placed on language or year of publication. A detailed description of this systematic search strategy can be found in Table S1. Additional articles were identified by screening the references of the eligible studies identified from the database search and by manually searching top-tiered journals that publish epidemiologic studies on cancer or heart disease. This search strategy was re-run on 7 November 2017 to ensure that it was up-to-date at the time of manuscript submission.

2.2 | Eligibility criteria

An assessment of study eligibility was independently undertaken by 2 reviewers in duplicate (DJB and AM). Eligibility was assessed in a two-stage process. In the first stage, the title and abstracts of each study were screened. Studies were considered for full-text review if they met all of the following criteria: (1) the study was published in a peer-reviewed journal; (2) original data were presented; (3) human participants were under investigation; (4) the article was relevant to the objectives of this review. In the second stage, the remaining studies were assessed in their entirety. To be included in this review, an investigation had to satisfy all of the following criteria: (1) the population studied were patients with a diagnosis of and prior treatment for lymphoma; (2) the patients survived for a minimum of 5 years after diagnosis, the study had a median follow-up of at least 10 years from the time of diagnosis, or the study presented risk estimates specific to individuals who survived for 5 years or more after their diagnosis; (3) there was a comparator group that was representative of the general population; (4) the outcomes reported included standardized mortality, risk, hazards, or odds ratios, or sufficient data were provided for their calculation; (5) the study was of a cohort, case-control, nested case-control, case-cohort, or cross-sectional design.

Agreement between the 2 reviewers was quantified using percent agreement and kappa statistics. Disagreements were resolved by consensus. In situations where 2 or more eligible studies were conducted on the same study population, the study with the largest sample size was retained in the review and those with smaller sample sizes were excluded.

2.3 | Data extraction and study quality assessment

Data from eligible studies were extracted using a predefined data template. For each study, data regarding the study population (sex, median age at diagnosis, and lymphoma staging), study characteristics (country, median duration of follow-up, number of survivors, and number of events), and treatment regimen (proportion receiving anthracycline chemotherapy, proportion receiving mantle field radiation, and treatment era) were extracted. When median values were not reported for relevant variables (age at diagnosis and duration of follow-up), mean values were used. Study quality was assessed by a single reviewer using the Newcastle Ottawa Scale which ranges from 0 (low quality) to 9 (high quality) and appraises studies across 3 domains: (1) the selection of participants; (2) the control of confounding; (3) and the assessment of outcomes.⁴⁴

2.4 | Statistical analysis

The primary outcome of interest was the pooled standardized mortality ratio (SMR) describing the observed number of deaths due to cardiovascular disease among lymphoma survivors relative to the expected number of deaths due to cardiovascular disease in the general population. Given the inherent heterogeneity in the population of patients represented by this body of literature, all meta-analyses were conducted using a DerSimonian and Laird random-effects model. In situations where a study reported stratified estimates, a Mantel-Haenszel fixed effects model was used to estimate a single overall effect estimate for that study. A cumulative meta-analysis was conducted to understand how emerging studies on the association between lymphoma and treatment exposure and cardiovascular mortality changed the pooled estimate over time. Stratified meta-analyses and meta-regression were also conducted across strata defined by age at diagnosis, sex, treatment era, duration of follow-up, and treatment regimen. The standard error (SE) of the log-transformed SMR or hazard ratio (HR) was estimated using the following formula: $SE(\log HR) \text{ or } SE(\log SMR) = (\log \text{ upper confidence interval} - \log \text{ lower confidence interval})/3.92$.⁴⁵

The degree of heterogeneity in the literature was assessed using the Q - and I^2 -statistics in tandem with a visual examination of the forest plots. Sources of heterogeneity were identified using subgroup analyses and meta-regression. Publication bias was assessed qualitatively through a visual inspection of a funnel plot and quantitatively using Begg's rank correlation test and Egger's regression test for funnel plot asymmetry. The trim-and-fill method was used to explore the robustness of our results to publication bias. All analyses were carried out using the *meta* and *metafor* packages in RStudio version 1.0.143 with the exception of the subgroup and meta-regression analyses which were performed using the *metan* and *metareg* commands in Stata version 14.2.

3 | RESULTS

3.1 | Study characteristics

The database search resulted in the identification of 7450 articles of which 27 were deemed to be eligible for inclusion (Figure 1).⁴⁶⁻⁷² There was strong agreement between the 2 reviewers at both stages of the eligibility assessment. The percent agreement and the kappa statistics respectively were 93.2% and 0.62 for the first stage and 97.0% and 0.73 for the second stage.

In total, the evidence base consisted of 46 829 Hodgkin and 14 764 non-Hodgkin lymphoma survivors treated between 1940 and 2006 who experienced a total of 1236 and 208 fatal cardiovascular events, respectively (Table 1). All studies were of a cohort design, and all reported a standardized mortality ratio except for the study by Kiserud et al,⁶⁷ which presented a hazard ratio. Of the 27 articles included in this review, 12 (44.4%) originated from North America. The median duration of follow-up was 13.8 years (range: 9.5-24.3; IQR: 11.2-18.2), median age at treatment was 25.8 years (range: 6.6-56.8; IQR: 19.2-31.1), and the percent of females in the study population was 45.1% (range: 0.0-61.8; IQR: 42.6-50.6).

3.2 | Study quality assessment

The Newcastle Ottawa Scale score for each study is presented in Table S2. Most studies scored 6 points ($n = 11$; 40.7%) or 7 points ($n = 11$; 40.7%) of a possible 9 points on the Newcastle Ottawa Scale. No studies included in this review excluded individuals with a history of cardiovascular disease at baseline. Six studies did not have a representative cohort of lymphoma survivors as they were conducted on clinical trial participants. Every study controlled for age and sex, and 2 studies additionally controlled for ethnicity. Aside from age, sex, and ethnicity, no other potential confounders were adjusted for in any of the analyses. All studies had an adequate duration of follow-up which we defined as 5 or more years since time of diagnosis. Five investigations did not report the way in which the outcome was captured; however, the outcome was objectively measured in the remaining studies. Fourteen studies did not describe the attrition of participants or had a loss-to-follow-up greater than 5% with no description of the lost participants.

3.3 | Meta-analyses

The pooled number of deaths due to cardiovascular disease among Hodgkin and non-Hodgkin lymphoma survivors was estimated to be 7.31 (95% CI: 5.29-10.10) and 5.35 (95% CI: 2.55-11.24) times greater than the expected number of deaths due to cardiovascular disease in the general population, respectively (Figure 2). The estimated pooled

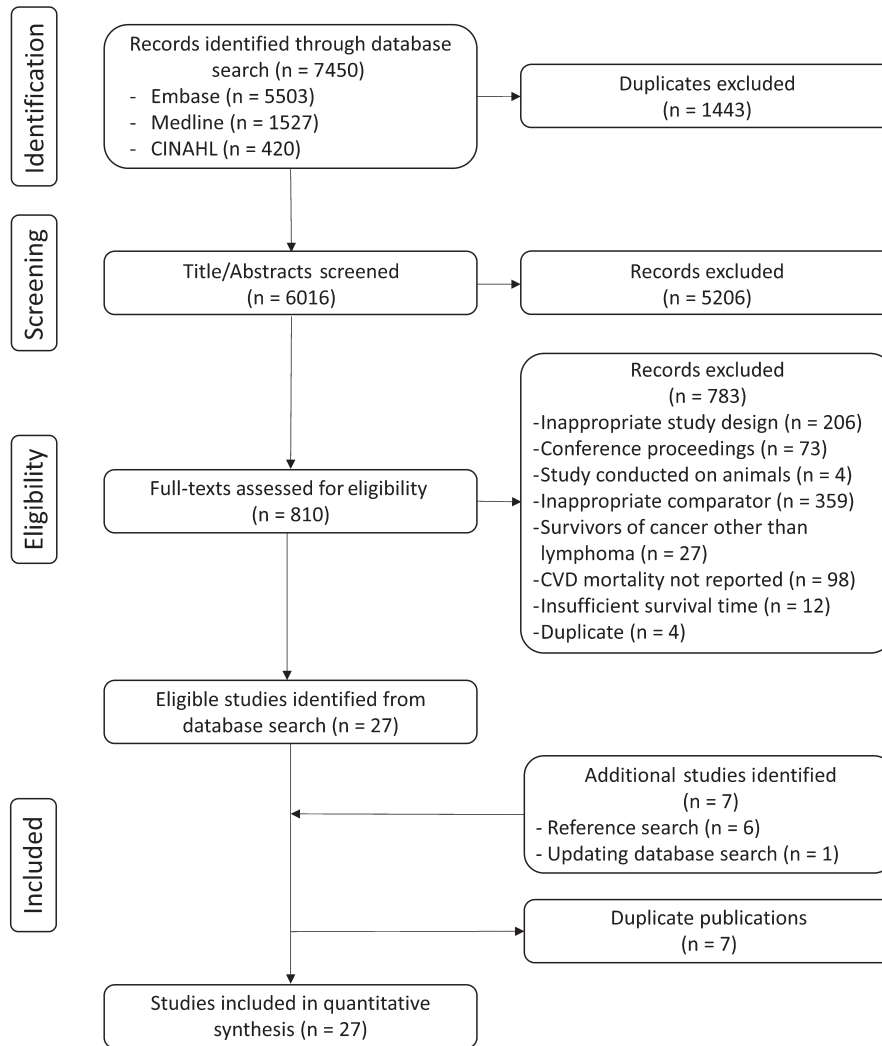


FIGURE 1 PRISMA flow diagram

SMR for all lymphoma survivors was 6.84 (95% CI: 5.09–9.20). There was no statistically significant difference in the pooled standardized mortality ratio for Hodgkin and non-Hodgkin lymphoma survivors (meta-regression P -value = .43). As visualized in the forest plot of the cumulative meta-analysis (Figure S1), studies have consistently reported an elevated risk of cardiovascular mortality among Hodgkin lymphoma survivors over time. Due to the limited number of investigations, a cumulative meta-analysis of results from the non-Hodgkin lymphoma studies was not conducted.

Meta-analyses stratified by age at diagnosis (<21 years vs \geq 21 years), sex (male vs female), duration of follow-up (<10 years vs 10 to <15 years vs 15 to <20 years vs \geq 20 years), treatment regimen (radiation only vs radiation and chemotherapy), and treatment era (<1980 vs \geq 1980) were conducted (Table S3). Among Hodgkin lymphoma survivors who were diagnosed before the age of 21, the estimated SMR was 13.43 (95% CI: 9.22–19.57) which was significantly different from the estimated SMR among Hodgkin

lymphoma survivors who were 21 years of age or older at the time of diagnosis (pooled SMR = 3.33, 95% CI: 2.54–4.35; meta-regression P -value = .001). This difference in the magnitude of effect by age at diagnosis was not observed in non-Hodgkin lymphoma survivors (pooled SMR_{age at diagnosis < 21 years} = 6.23, 95% CI: 3.35–11.59; pooled SMR_{age at diagnosis \geq 21 years} = 6.61, 95% CI: 0.45–96.59; meta-regression P -value = .97). Among Hodgkin lymphoma survivors, there was no statistically significant difference in the estimated SMRs by sex, duration of follow-up, treatment regimen, or treatment era (meta-regression P -value > .35). These stratified meta-analyses were not conducted among studies of non-Hodgkin lymphoma survivors because of insufficient information.

3.4 | Assessment of heterogeneity

The degree of heterogeneity in this evidence base was considerable (Q statistic < 0.01; I^2 statistic > 94.0%). Potential sources of heterogeneity assessed through subgroup

meta-analyses and meta-regression are presented in Table 2. Among studies of Hodgkin lymphoma, the median age at diagnosis (<21 years vs \geq 21 years) and the percent of participants who had stage I or stage II lymphoma (<50% vs \geq 50%) were statistically and clinically significant sources of heterogeneity (meta-regression P -value <.05). Among studies of non-Hodgkin lymphoma, the maximum treatment era (<1997 vs \geq 1997) and Newcastle Ottawa Scale selection score were identified as significant sources of heterogeneity (P <.05). Although not statistically significant, the magnitude of effect reported by studies with a total Newcastle Ottawa Scale of 7 (higher quality) tended to be smaller than studies with a total Newcastle Ottawa Scale of 6 or less (lower quality) for both Hodgkin and non-Hodgkin lymphoma.

3.5 | Publication bias

There was no evidence of statistically significant publication bias according to Begg's test (P -value = .30) or Egger's test (P -value = .12). However, the presence of funnel plot asymmetry (Figure S2) suggested a potential lack of small studies reporting small effect sizes. Therefore, we carried out the trim-and-fill procedure. Using this method, the number of studies estimated to be missing was zero and the overall effect estimate was unchanged. When repeating these analyses for studies on Hodgkin and non-Hodgkin lymphoma survivors separately, we similarly found a lack of evidence that would suggest publication bias (data not shown).

4 | DISCUSSION

Our findings suggest that both Hodgkin and non-Hodgkin lymphoma survivors have an elevated risk of experiencing a fatal cardiovascular event compared to the general population. This association is unlikely to be spurious according to Bradford Hill's criteria for causation.⁷³ The magnitude of the estimated effect along with the consistency of the association and its established temporality argue strongly against a spurious association and suggest a possible causal relationship. Further, previous studies have found a dose-response relation between the amount of chest radiation and the cumulative dose of anthracyclines with cardiovascular disease risk which provides support for a biologic gradient.^{9,74-76} Lastly, there is a high degree of biological plausibility with respect to the relation of interest. Anthracyclines are established cardiotoxic agents which are thought to impact cardiovascular function through the production of reactive oxygen species and other biologic mechanisms.³² Radiation therapy is known to cause direct damage to the heart and surrounding vasculature.³⁰ In addition, exposure to anthracyclines and chest radiation have been associated with intermediate endpoints on the causal pathway such as atherosclerosis and reduced left ventricle function.^{77,78}

There is evidence that individuals treated for Hodgkin lymphoma before the age of 21 may be at a particularly high risk of cardiovascular mortality. Our stratified meta-analyses showed that there were statistically and clinically significant differences in the estimated SMR by age at diagnosis. This age difference in the susceptibility to the cardiovascular effects of cancer treatment has been described in previous reviews, and there exist several plausible mechanisms.^{79,80} Cancer treatment may impair normal cardiovascular development among children and young adults which could partially explain the observed age differences in the estimated effect. Alternatively, a developing cardiovascular system may be more susceptible to the cardiotoxic insults of cancer treatment. This disparity may also reflect differences in treatment regimens as participants treated during childhood would have received treatment in an earlier era when the dose of anthracyclines and the prevalence of mantle field radiation were higher compared to more recent eras.⁸¹ Cancer treatment could also indirectly affect the risk of cardiovascular disease mortality by impacting various behavioral and psychosocial determinants of health.^{82,83} These indirect pathways may play a lesser role in mediating the relation between lymphoma treatment and cardiovascular disease risk among those treated later in life which could partially account for this heterogeneity. Regardless of the underlying mechanism, our results suggest that childhood Hodgkin lymphoma survivors are a population with a particularly high risk of experiencing a fatal cardiovascular event.

There exists considerable heterogeneity in this body of literature. Both age and lymphoma stage at the time of diagnosis were clinically and statistically significant sources of heterogeneity. There was also a suggestion that treatment characteristics and study quality were important sources of heterogeneity. As expected, larger effect estimates were reported in studies with a greater proportion of participants who received anthracyclines and in studies conducted before 1997 (see Table 2). The larger effect estimates among studies conducted prior to 1997 may be attributable to increased anthracycline and mantle field radiation exposure, as previously described, or may be due to the longer duration of follow-up.⁸¹ Although not statistically significant, investigations where a greater proportion of patients received mantle field, extended field, or total nodal radiation tended to report smaller effect estimates. The unexpected direction of this trend may be artifactual or due to confounding at the individual level. Across all domains of the Newcastle Ottawa Scale, there was a consistent trend that larger effect estimates were reported in lower quality studies. The main reasons for the lower study quality were the predominant inclusion of patients from clinical trials, the failure to adjust for ethnicity, and the potential for bias due to loss-to-follow-up.

Given the limitations in the literature, 3 important caveats should be considered when interpreting the results

TABLE 1 Study characteristics of articles included in systematic review (by year of publication, n = 27)

First author (year)	Cohort Designation	Country	Hodgkin		Non-Hodgkin	
			Survivors (n)	Deaths (n)	Survivors (n)	Deaths (n)
Henry-Amar (1990) ⁴⁶	EORTC Lymphoma Cooperative Group ^c	Various	1449	17	—	—
Hancock (1993) ⁴⁷	Stanford University Medical Center	USA	635	12	—	—
Hancock (1993) ⁴⁸	Stanford University Medical Center	USA	2232	88	—	—
Robertson (1994) ⁴⁹	British National Register of Childhood Tumours	UK	726	1	450	0
Mauch (1995) ⁵⁰	Harvard-affiliated hospitals	USA	794	15	—	—
King (1996) ⁵¹	University of Rochester Hospital	USA	326	7	—	—
Glanzmann (1998) ⁵³	University Hospital of Zurich	Switzerland	352	13	—	—
Brierley (1998) ⁵²	Princess Margaret Hospital	Canada	611	14	—	—
Hudson (1998) ⁵⁴	St. Jude Children's Research Hospital	USA	387	6	—	—
Reinders (1999) ⁵⁶	Daniel den Hoed Cancer Center	Netherlands	258	12	—	—
Shah (1999) ⁵⁷	St. Jude Children's Research Hospital	USA	106	3	—	—
Green (1999) ⁵⁵	Roswell Park Cancer Institute	USA	58	2	30	1
Eriksson (2000) ⁵⁹	Radiumhemmet Karolinska Hospital	Sweden	157	13	—	—
Avilés (2000) ⁵⁸	National Medical Center Oncology Hospital	Mexico	2980	39	—	—
Lee (2000) ⁶⁰	University of Minnesota Hospital	USA	210	16	—	—
Avilés (2001) ⁶¹	National Medical Center Oncology Hospital	Mexico	—	—	714	7
Ng (2002) ⁶²	Harvard-affiliated hospitals	USA	1080	17	—	—
Aleman (2003) ⁶³	Netherlands Hospitals	Netherlands	1261	45	—	—
Avilés (2005) ⁶⁴	National Medical Center Oncology Hospital	Mexico	476	20	—	—
Swerdlow (2007) ⁶⁵	Collaborative British Cohort Study	UK	7033	166	—	—
Mertens (2008) ⁶⁶	Childhood Cancer Survivor Study	USA	2717	62	1524	13
Kiserud (2010) ⁶⁷	Norwegian Radium Hospital	Norway	557	36	—	—
Prasad (2012) ⁶⁸	Finnish Cancer Registry	Finland	1084	44	557	14
Kero (2015) ⁶⁹	Finish Cancer Registry	Finland	1693	75	923	27
Bhuller (2016) ⁷⁰	British Columbia Cancer Registry	Canada	442	8	—	—
Henson (2016) ⁷¹	Teenage and Young Adult Cancer Survivor Cohort	UK	16 971	472	9467	129
Fidler (2017) ⁷²	British Childhood Cancer Survivor Study	UK	2234	33	1549	17

^aPrimarily doxorubicin but also included epirubicin and mitoxantone.

^bIncluding patients who received extended field or total nodal radiation.

^cStudy conducted on participants from 4 clinical trials conducted by the European Organization for Research and Treatment of Cancer (EORTC) Lymphoma Cooperative Group.

^dAlthough the median follow-up was less than 10 y, the study was included because it presented risk estimates stratified by follow-up.

^eStudy did not report the median age at diagnosis, but all participants were diagnosed with lymphoma before the age of 15 y.

^fExpected value calculated using available information.

from this meta-analysis. First, there is a risk of bias in our pooled effect estimates due to failure to adjust for potential confounders such as tobacco use, the presence of diabetes,

and other risk factors associated with both lymphoma and cardiovascular disease.⁸⁴⁻⁸⁶ As the individual studies did not adjust for cardiovascular disease risk factors aside from

Female (%)	Treatment Era (y)	Median age at diagnosis (y)	Median follow-up (y)	Anthracycline exposure ^a (%)	Mantle field radiation ^b (%)
43.0	1963-1986	31.2	N/A	8.0	100.0
44.7	1961-1991	15.4	10.3	12.9	83.8
41.0	1960-1995	29.0	9.5 ^d	9.0	72.1
N/A	1971-1985	<15 ^e	N/A	N/A	N/A
44.0	1969-1988	24.0	11.0	5.4	99.6
50.6	1954-1989	25.6	13.3	N/A	100.0
N/A	1964-1992	33.8	11.2	26.7	100.0
45.7	1973-1984	31.0	11.0	2.3	80.4
42.6	1968-1990	14.4	15.1	28.2	68.0
47.7	1965-1980	28.0	14.2	0.0	100.0
41.5	1970-1995	14.7	13.3	39.6	20.8
0.0	1960-1989	10.9	24.1	N/A	N/A
38.2	1972-1985	33.0	16.0	45.2	N/A
54.5	1970-1995	14.6 ^f	14.6	N/A	54.8
46.7	1970-1986	25.8 ^f	15.6	N/A	100.0
57.4	1975-1995	56.8	N/A	91.6	19.3
45.7	1969-1997	25.0	12.0	16.3	61.9
42.7	1965-1987	26.0	17.8	N/A	N/A
54.0	1988-1996	39.6	11.5	100.0	0.0
38.1	1967-2000	34.8 ^f	9.9 ^c	26.6	32.1
44.7	1970-1986	7.8 ^f	N/A	N/A	N/A
43.0	1971-1991	30.0	13.0	26.6	78.0
54.4	1966-1999	19.2 ^f	20.9	N/A	N/A
43.7	1966-2004	21.4 ^f	N/A	N/A	N/A
50.0	1970-1999	19.7 ^f	19.6	N/A	N/A
61.8	1971-2006	31.1 ^f	19.3	N/A	N/A
45.1	1940-2006	6.6	23.0	N/A	N/A

age, sex, and ethnicity, the estimated pooled SMR may have overestimated the true SMR of cardiovascular mortality in this study population. However, it is unlikely that the

observed association is entirely explained by residual confounding given the large magnitude of effect. Second, it is probable that a single pooled effect estimate inadequately

TABLE 2 Assessment of heterogeneity in investigations of the long-term risk of cardiovascular mortality among lymphoma survivors

	Hodgkin (N = 26)			Non-Hodgkin (N = 7)		
	N ^a	SMR (95% C.I.) ^b	P-value ^c	N ^a	SMR (95% C.I.) ^b	P-value ^c
Demographics						
Percent female						
<50%	18	6.17 (4.50-8.48)	.99	3	5.15 (3.53-7.50)	.58
≥50%	6	11.19 (3.83-32.72)		4	5.17 (1.79-14.99)	
Median age at diagnosis						
<21 years	8	14.10 (8.64-23.01)	.006	4	5.04 (3.63-6.90)	.96
≥21 years	16	4.96 (3.40-7.24)		3	5.34 (1.36-20.87)	
Percent stage I or II						
<50%	2	39.52 (26.79-58.30)	.045	1	—	—
≥50%	9	5.91 (3.51-9.96)		0	—	
Study characteristics						
Country						
North American	12	7.66 (4.42-13.27)	.85	2	6.63 (3.77-11.67)	.69
Other	14	7.12 (4.42-13.27)		5	4.92 (2.09-11.65)	
Median follow-up						
<15 years	14	7.02 (3.61-13.68)	.72	0	—	—
≥15 years	10	7.73 (5.29-11.28)		5	—	
Number of survivors						
<1000 survivors	15	8.84 (4.58-17.05)	.33	4	7.89 (2.75-22.68)	.29
≥1000 survivors	11	5.92 (4.37-8.02)		3	3.48 (1.44-8.40)	
Number of deaths ^d						
<20 deaths	15	7.38 (4.56-11.96)	.97	5	7.73 (3.66-16.33)	.13
≥20 deaths	11	7.28 (4.56-11.63)		2	2.44 (1.14-5.21)	
Treatment Regimen						
Percent who received anthracyclines ^e						
<25%	7	7.60 (5.30-10.92)	.19	0	—	—
≥25%	7	11.23 (3.64-34.69)		1	—	
Percent who received mantle field radiation ^f						
<75%	7	12.29 (4.37-34.58)	.17	1	—	—
≥75%	9	5.40 (3.13-9.32)		0	—	
Maximum treatment era						
<1997	20	8.10 (5.08-12.29)	.40	3	12.64 (3.89-41.12)	.049
≥1997	6	5.13 (3.76-6.99)		4	3.25 (1.80-5.87)	
Newcastle Ottawa Scale						
Selection score						
3 points	22	6.82 (4.80-9.71)	.40	6	3.86 (2.18-6.84)	.03
2 points	4	10.90 (3.04-39.04)		1	26.40 (14.31-48.72)	
Comparability score						
2 points	2	3.49 (2.83-4.31)	.20	0	—	—
1 point	24	7.85 (5.52-11.16)		7	—	
Outcome score						
3 points	12	6.45 (4.53-9.18)	.52	4	3.75 (1.80-7.83)	.23
1 or 2 points	14	8.41 (4.55-15.56)		3	9.86 (1.89-51.46)	

(Continues)

TABLE 2 (Continued)

	Hodgkin (N = 26)			Non-Hodgkin (N = 7)		
	N ^a	SMR (95% C.I.) ^b	P-value ^c	N ^a	SMR (95% C.I.) ^b	P-value ^c
Total score						
7 points	11	5.87 (4.17-8.28)	.26	4	3.75 (1.80-7.83)	.23
6, 5, or 4 points	15	9.05 (5.05-16.21)		3	9.86 (1.89-51.46)	

^aNumber of studies in subgroup.

^bPooled standardized mortality ratio estimate (95% confidence intervals) of study estimates specific to subgroup from random-effects model.

^cP-value corresponds to the significance of an indicator variable for subgroup in a meta-regression model.

^dDeaths caused by cardiovascular disease.

^ePrimarily doxorubicin but also included epirubicin and mitoxantone.

^fIncluding patients who received extended field or total nodal radiation.

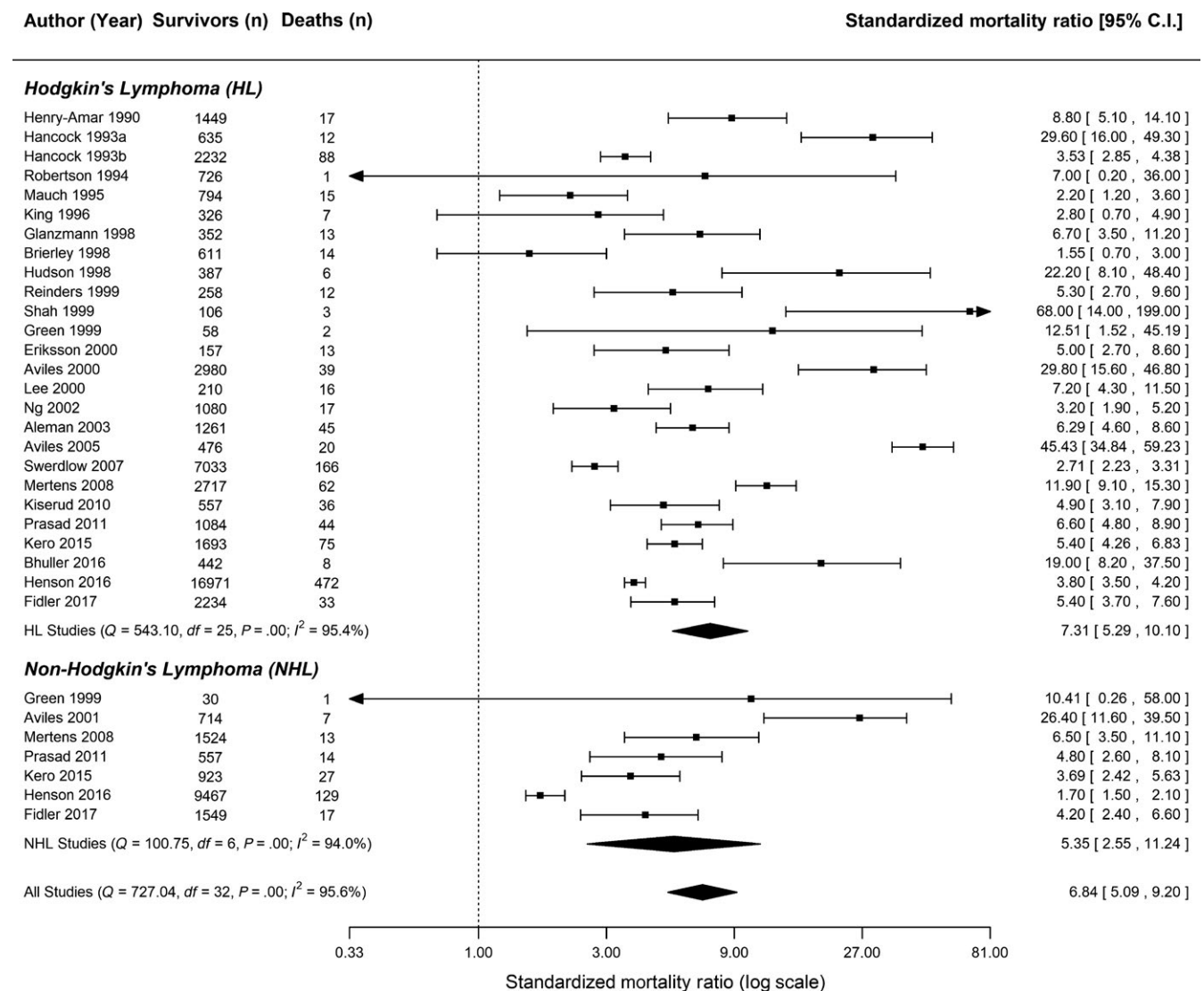


FIGURE 2 Forest plot of the long-term risk of cardiovascular disease mortality among lymphoma survivors

represents the true underlying effect given the considerable heterogeneity of the literature. Among the studies included in this review, there was a lack of reporting of patient characteristics and a large degree of heterogeneity

remains unexplained. It is therefore likely that the true underlying effect differs across some of the unreported demographic, behavioral, and treatment variables. Third, the results from this review may not be generalizable to

individuals receiving more modern treatment modalities or to older adults diagnosed with lymphoma as most individuals in the evidence base were treated for lymphoma in the 20th century and were diagnosed with lymphoma before the age of 40.

5 | CONCLUSIONS AND FUTURE DIRECTIONS

We have identified areas of future research based on the limitations of the evidence base. Future studies should attempt to control for potential confounders in addition to age, sex, and ethnicity. Investigators are encouraged to use directed acyclic graphs and g-methods to separate the potential time-varying confounding effects of psychosocial and lifestyle variables. In addition, future studies should strive to report a greater number of pre- and post-treatment patient characteristics (eg, obesity, tobacco use, the presence of comorbidities), disease features (eg, subtype of Hodgkin and non-Hodgkin lymphoma), and treatment variables (eg, the median treatment era, the proportion who received anthracyclines) with a higher level of granularity. Authors are also encouraged to assess and report on the extent to which loss-to-follow-up may have biased their estimates and to consider exploring modification by age at diagnosis, stage, and prior history of cardiovascular disease. Lastly, the majority of research to date has focused on individuals diagnosed with lymphoma during childhood or young adulthood and there is a need for additional research that focuses on persons diagnosed with lymphoma later in life.

While clarifying the independent relation between prior lymphoma diagnosis and cardiovascular disease is important, the evidence to date suggests that patients with a history of lymphoma are at heightened risk for cardiovascular mortality. Even if the magnitude of the associations documented within this meta-analysis are influenced by residual confounding and other sources of bias, healthcare providers should recognize that persons with a prior history of lymphoma, particularly if diagnosed with Hodgkin lymphoma before the age of 21, are at an increased risk of adverse cardiovascular outcomes. These findings highlight the importance of implementing cardiovascular surveillance, prevention, and screening interventions in lymphoma survivors.

ACKNOWLEDGMENTS

Devon J Boyne was supported by the University of Calgary Ruby Doctoral Recruitment Scholarship and the Faculty of Graduate Studies Doctoral Scholarship and is currently supported by a Queen Elizabeth II Graduate Scholarship. Christine M Friedenreich was supported by an Alberta Innovates Health Solutions Health Senior Scholar Award and

by the Alberta Cancer Foundation Weekend to End Women's Cancers Breast Cancer Chair. Todd Wilson is supported by the Roy and Vi Baay Chair in Kidney Research Award.

CONFLICT OF INTERESTS

Doreen M. Rabi received travel reimbursement from Hypertension Canada. Matthew T. James has an investigator initiated grant funded by Amgen Canada. No other potential conflict of interests are declared.

ORCID

Devon J. Boyne  <http://orcid.org/0000-0001-6301-2429>

REFERENCES

1. Miller KD, Siegel RL, Lin CC, et al. Cancer treatment and survivorship statistics, 2016. *CA Cancer J Clin*. 2016;66:271-289.
2. Canadian Cancer Society's Advisory Committee on Cancer Statistics. *Canadian Cancer Statistics 2017*. Toronto, ON: Canadian Cancer Society; 2017.
3. Arden-Close E, Eiser C, Pacey A. Sexual functioning in male survivors of lymphoma: a systematic review (CME). *J Sex Med*. 2011;8:1833-1841.
4. Bower JE. Cancer-related fatigue – mechanisms, risk factors, and treatments. *Nat Rev Clin Oncol*. 2014;11:597-609.
5. Chemaitilly W, Sklar CA. Endocrine complications in long-term survivors of childhood cancers. *Endocr Relat Cancer*. 2010;17:R141-R159.
6. Cheung YT, Krull KR. Neurocognitive outcomes in long-term survivors of childhood acute lymphoblastic leukemia treated on contemporary treatment protocols: a systematic review. *Neurosci Biobehav Rev*. 2015;53:108-120.
7. Franco VI, Lipshultz SE. Cardiac complications in childhood cancer survivors treated with anthracyclines. *Cardiol Young*. 2015;25(Suppl 2):107-116.
8. Iyer NS, Balsamo LM, Bracken MB, et al. Chemotherapy-only treatment effects on long-term neurocognitive functioning in childhood ALL survivors: a review and meta-analysis. *Blood*. 2015;126:346-353.
9. Lipshultz SE, Franco VI, Miller TL, et al. Cardiovascular disease in adult survivors of childhood cancer. *Annu Rev Med*. 2015;66:161-176.
10. Mitchell AJ, Ferguson DW, Gill J, et al. Depression and anxiety in long-term cancer survivors compared with spouses and healthy controls: a systematic review and meta-analysis. *Lancet Oncol*. 2013;14:721-732.
11. Robison LL, Hudson MM. Survivors of childhood and adolescent cancer: life-long risks and responsibilities. *Nat Rev Cancer*. 2014;14:61-70.
12. Rose SR, Horne VE, Howell J, et al. Late endocrine effects of childhood cancer. *Nat Rev Endocrinol*. 2016;12:319-336.
13. Simard S, Thewes B, Humphris G, et al. Fear of cancer recurrence in adult cancer survivors: a systematic review of quantitative studies. *J Cancer Surviv*. 2013;7:300-322.

14. Travis LB, Demark Wahnefried W, Allan JM, et al. Aetiology, genetics and prevention of secondary neoplasms in adult cancer survivors. *Nat Rev Clin Oncol*. 2013;10:289-301.
15. Travis LB, Ng AK, Allan JM, et al. Second malignant neoplasms and cardiovascular disease following radiotherapy. *J Natl Cancer Inst*. 2012;104:357-370.
16. Wallis CJD, Mahar AL, Choo R, et al. Second malignancies after radiotherapy for prostate cancer: systematic review and meta-analysis. *BMJ*. 2016;352:i851.
17. Armenian SH, Hudson MM, Mulder RL, et al. Recommendations for cardiomyopathy surveillance for survivors of childhood cancer: a report from the International Late Effects of Childhood Cancer Guideline Harmonization Group. *Lancet Oncol*. 2015;16:e123-e136.
18. Barthel EM, Spencer K, Banco D, et al. Is the adolescent and young adult cancer survivor at risk for late effects? It depends on where you look. *J Adolesc Young Adult Oncol*. 2016;5:159-173.
19. Bower JE, Bak K, Berger A, et al. Screening, assessment, and management of fatigue in adult survivors of cancer: an American Society of Clinical oncology clinical practice guideline adaptation. *J Clin Oncol*. 2014;32:1840-1850.
20. Brier MJ, Schwartz LA, Kazak AE. Psychosocial, health-promotion, and neurocognitive interventions for survivors of childhood cancer: a systematic review. *Health Psychol*. 2015;34:130-148.
21. Chow EJ, Anderson L, Baker KS, et al. Late effects surveillance recommendations among survivors of childhood hematopoietic cell transplantation: a children's Oncology group report. *Biol Blood Marrow Transplant*. 2016;22:782-795.
22. Demark-Wahnefried W, Rogers LQ, Alfano CM, et al. Practical clinical interventions for diet, physical activity, and weight control in cancer survivors. *CA Cancer J Clin*. 2015;65:167-189.
23. El-Shami K, Oeffinger KC, Erb NL, et al. American Cancer society colorectal cancer survivorship care guidelines. *CA Cancer J Clin*. 2015;65:428-455.
24. Kremer LC, Mulder RL, Oeffinger KC, et al. A worldwide collaboration to harmonize guidelines for the long-term follow-up of childhood and young adult cancer survivors: a report from the International Late Effects of Childhood Cancer Guideline Harmonization Group. *Pediatr Blood Cancer*. 2013;60:543-549.
25. Mayer DK, Nasso SF, Earp JA. Defining cancer survivors, their needs, and perspectives on survivorship health care in the USA. *Lancet Oncol*. 2017;18:e11-e18.
26. Pulte D, Gondos A, Brenner H. Ongoing improvement in outcomes for patients diagnosed as having non-hodgkin lymphoma from the 1990s to the early 21st century. *Arch Intern Med*. 2008;168:469-476.
27. Pulte D, Jansen L, Gondos A, et al. Survival of patients with non-Hodgkin lymphoma in Germany in the early 21st century. *Leuk Lymphoma*. 2013;54:979-985.
28. Pulte D, Jansen L, Gondos A, et al. Improved population level survival in younger Hodgkin lymphoma patients in Germany in the early 21st century. *Br J Haematol*. 2014;164:851-857.
29. Smith A, Crouch S, Lax S, et al. Lymphoma incidence, survival and prevalence 2004-2014: sub-type analyses from the UK's Haematological Malignancy Research Network. *Br J Cancer*. 2015;112:1575-1584.
30. Jaworski C, Mariani JA, Wheeler G, et al. Cardiac complications of thoracic irradiation. *J Am Coll Cardiol*. 2013;61:2319-2328.
31. Tichelli A, Bhatia S, Socié G. Cardiac and cardiovascular consequences after haematopoietic stem cell transplantation. *Br J Haematol*. 2008;142:11-26.
32. Valcovici M, Andrica F, Serban C, et al. Cardiotoxicity of anthracycline therapy: current perspectives. *Arch Med Sci*. 2016;12:428-435.
33. Li C, Liu P, Liu L, et al. Metabolic syndrome in hematologic malignancies survivors: a meta-analysis. *Med Oncol*. 2015;32:422.
34. Scholz-Kreisel P, Spix C, Blettner M, et al. Prevalence of cardiovascular late sequelae in long-term survivors of childhood cancer: a systematic review and meta-analysis. *Pediatr Blood Cancer*. 2017;64:e26428.
35. Hancock SL, Hoppe RT. Long-term complications of treatment and causes of mortality after Hodgkin's disease. *Semin Radiat Oncol*. 1996;6:225-242.
36. Hodgson DC. Hodgkin lymphoma: the follow-up of long-term survivors. *Hematol Oncol Clin North Am*. 2008;22:233-244.
37. Hodgson DC. Late effects in the era of modern therapy for Hodgkin lymphoma. *Hematol Am Soc Hematol Educ Prog*. 2011;2011:323-329.
38. Ng AK. Late complications after treatment for Hodgkin lymphoma. *Curr Hematol Malign Rep*. 2008;3:119-125.
39. Ng AK, LaCasce A, Travis LB. Long-term complications of lymphoma and its treatment. *J Clin Oncol*. 2011;29:1885-1892.
40. Ng AK, van Leeuwen FE. Hodgkin lymphoma: late effects of treatment and guidelines for surveillance. *Semin Hematol*. 2016;53:209-215.
41. Stroup DF, Berlin JA, Morton SC, et al. Meta-analysis of observational studies in epidemiology: a proposal for reporting. *JAMA*. 2000;283:2008-2012.
42. University of Texas School of Public Health. Search Filters for Various Databases: Ovid Medline. http://libguides.sph.uth.tmc.edu/search_filters/ovid_medline_filters. Accessed November 10, 2016.
43. BMJ Clinical Evidence. Study Design Search Filters. <http://clinicalevidence.bmj.com/x/set/static/ebm/learn/665076.html>. Accessed November 10, 2016.
44. Wells G, Shea B, O'Connell D, et al. The Newcastle-Ottawa Scale (NOS) for assessing the quality of nonrandomized studies in meta-analyses. http://www.ohri.ca/programs/clinical_epidemiology/oxford.asp. Accessed June 25, 2017.
45. Selecting studies and collecting data. In: Higgins JPT, Green S, eds. *Cochrane Handbook for Systematic Reviews of Interventions Version 5.1.0*. London, UK: The Cochrane Collaboration; 2011:7.7.7.3. <http://handbook-5-1.cochrane.org>. Updated March 2011.
46. Henry-Amar M, Hayat M, Meerwaldt JH, et al. Causes of death after therapy for early stage Hodgkin's disease entered on EORTC protocols. EORTC Lymphoma Cooperative Group. *Int J Radiat Oncol Biol Phys*. 1990;19:1155-1157.
47. Hancock SL, Donaldson SS, Hoppe RT. Cardiac disease following treatment of Hodgkin's disease in children and adolescents. *J Clin Oncol*. 1993;11:1208-1215.
48. Hancock SL, Tucker MA, Hoppe RT. Factors affecting late mortality from heart disease after treatment of Hodgkin's disease. *JAMA*. 1993;270:1949-1955.
49. Robertson CM, Hawkins MM, Kingston JE. Late deaths and survival after childhood cancer: implications for cure. *BMJ*. 1994;309:162-166.

50. Mauch P, Kalish L, Marcus K, et al. Long-term survival in Hodgkin's disease relative impact of mortality, second tumors, infection, and cardiovascular disease. *Cancer J Sci Am*. 1995;1:33-42.
51. King V, Constine LS, Clark D, et al. Symptomatic coronary artery disease after mantle irradiation for Hodgkin's disease. *Int J Radiat Oncol Biol Phys*. 1996;36:881-889.
52. Brierley JD, Rathmell AJ, Gospodarowicz MK, et al. Late effects of treatment for early-stage Hodgkin's disease. *Br J Cancer*. 1998;77:1300-1310.
53. Glanzmann C, Kaufmann P, Jenni R, et al. Cardiac risk after mediastinal irradiation for Hodgkin's disease. *Radiother Oncol*. 1998;46:51-62.
54. Hudson MM, Poquette CA, Lee J, et al. Increased mortality after successful treatment for Hodgkin's disease. *J Clin Oncol*. 1998;16:3592-3600.
55. Green DM, Hyland A, Chung CS, et al. Cancer and cardiac mortality among 15-year survivors of cancer diagnosed during childhood or adolescence. *J Clin Oncol*. 1999;17:3207-3215.
56. Reinders JG, Heijmen BJ, Olofsen-van Acht MJ, et al. Ischemic heart disease after mantlefield irradiation for Hodgkin's disease in long-term follow-up. *Radiother Oncol*. 1999;51:35-42.
57. Shah AB, Hudson MM, Poquette CA, et al. Long-term follow-up of patients treated with primary radiotherapy for supradiaphragmatic Hodgkin's disease at St. Jude Children's Research Hospital. *Int J Radiat Oncol Biol Phys*. 1999;44:867-877.
58. Aviles A, Neri N, Cuadra I, et al. Second lethal events associated with treatment for Hodgkin's disease: a review of 2980 patients treated in a single Mexican institute. *Leuk Lymphoma*. 2000;39:311-319.
59. Eriksson F, Gagliardi G, Liedberg A, et al. Long-term cardiac mortality following radiation therapy for Hodgkin's disease: analysis with the relative seriality model. *Radiother Oncol*. 2000;55:153-162.
60. Lee CK, Aeppli D, Nierengarten ME. The need for long-term surveillance for patients treated with curative radiotherapy for Hodgkin's disease: University of Minnesota experience. *Int J Radiat Oncol Biol Phys*. 2000;48:169-179.
61. Avilés A, Díaz-Maqueo JC, García EL, et al. Late lethal events in patients with diffuse large B cell lymphoma: a review of 714 patients treated in a single centre. *Leuk Lymphoma*. 2001;42:631-637.
62. Ng AK, Bernardo MP, Weller E, et al. Long-term survival and competing causes of death in patients with early-stage Hodgkin's disease treated at age 50 or younger. *J Clin Oncol*. 2002;20:2101-2108.
63. Aleman BM, van den Belt-Dusebout AW, Klokmann WJ, et al. Long-term cause-specific mortality of patients treated for Hodgkin's disease. *J Clin Oncol*. 2003;21:3431-3439.
64. Aviles A, Neri N, Nambo JM, et al. Late cardiac toxicity secondary to treatment in Hodgkin's disease. A study comparing doxorubicin, epirubicin and mitoxantrone in combined therapy. *Leuk Lymphoma*. 2005;46:1023-1028.
65. Swerdlow AJ, Higgins CD, Smith P, et al. Myocardial infarction mortality risk after treatment for Hodgkin disease: a collaborative British cohort study. *J Natl Cancer Inst*. 2007;99:206-214.
66. Mertens AC, Liu Q, Neglia JP, et al. Cause-specific late mortality among 5-year survivors of childhood cancer: the Childhood Cancer Survivor Study. *J Natl Cancer Inst*. 2008;100:1368-1379.
67. Kiserud CE, Loge JH, Fossa A, et al. Mortality is persistently increased in Hodgkin's lymphoma survivors. *Eur J Cancer*. 2010;46:1632-1639.
68. Prasad PK, Signorello LB, Friedman DL, et al. Long-term non-cancer mortality in pediatric and young adult cancer survivors in Finland. *Pediatr Blood Cancer*. 2012;58:421-427.
69. Kero AE, Jarvela LS, Arola M, et al. Late mortality among 5-year survivors of early onset cancer: a population-based register study. *Int J Cancer*. 2015;136:1655-1664.
70. Bhuller KS, Zhang Y, Li D, et al. Late mortality, secondary malignancy and hospitalisation in teenage and young adult survivors of Hodgkin lymphoma: report of the Childhood/Adolescent/Young Adult Cancer Survivors Research Program and the BC Cancer Agency Centre for Lymphoid Cancer. *Br J Haematol*. 2016;172:757-768.
71. Henson KE, Reulen RC, Winter DL, et al. Cardiac mortality among 200 000 five-year survivors of cancer diagnosed at 15 to 39 years of age: the Teenage and Young Adult Cancer Survivor Study. *Circulation*. 2016;134:1519-1531.
72. Fidler MM, Ruelen RC, Henson KE, et al. Population-based long-term cardiac-specific mortality among 34,489 five-year survivors of childhood cancer in Great Britain. *Circulation*. 2017;135:951-963.
73. Hill AB. The environment and disease: association or causation? *J R Soc Med*. 2015;108:32-37.
74. Cutter DJ, Schaapveld M, Darby SC, et al. Risk for valvular heart disease after treatment for Hodgkin lymphoma. *J Natl Cancer Inst*. 2015;107:djv008.
75. Van Nimwegen FA, Schaapveld M, Cutter DJ, et al. Radiation dose-response relationship for risk of coronary heart disease in survivors of Hodgkin lymphoma. *J Clin Oncol*. 2015;34:235-243.
76. Van Nimwegen FA, Schaapveld M, Janus CP, et al. Cardiovascular disease after Hodgkin lymphoma treatment: 40-year disease risk. *JAMA Intern Med*. 2015;175:1007-1017.
77. Tsai H-R, Gjesdal O, Wethal T, et al. Left ventricular function assessed by two-dimensional speckle tracking echocardiography in long-term survivors of Hodgkin's lymphoma treated by mediastinal radiotherapy with or without anthracycline therapy. *Am J Cardiol*. 2011;107:472-477.
78. Wethal T, Nedregaard B, Andersen R, et al. Atherosclerotic lesions in lymphoma survivors treated with radiotherapy. *Radiother Oncol*. 2014;110:448-454.
79. Lotrionte M, Biondi-Zoccai G, Abbate A, et al. Review and meta-analysis of incidence and clinical predictors of anthracycline cardiotoxicity. *Am J Cardiol*. 2013;112:1980-1984.
80. Mozdzanowska D, Woźniowski M. Radiotherapy and anthracyclines—cardiovascular toxicity. *Contemp Oncol*. 2015;19:93-97.
81. Eloranta S, Lambert PC, Sjöberg J, et al. Temporal trends in mortality from diseases of the circulatory system after treatment for Hodgkin lymphoma: a population-based cohort study in Sweden (1973 to 2006). *J Clin Oncol*. 2013;31:1435-1441.
82. Daniëls LA, Oerlemans S, Krol ADG, et al. Chronic fatigue in Hodgkin lymphoma survivors and associations with anxiety, depression and comorbidity. *Br J Cancer*. 2014;110:868-874.
83. Wilson CL, Gawade PL, Ness KK. Impairments that influence physical function among survivors of childhood cancer. *Children*. 2015;2:1-36.
84. Castillo JJ, Dalia S, Shum H. Meta-analysis of the association between cigarette smoking and incidence of Hodgkin's Lymphoma. *J Clin Oncol*. 2011;29:3900-3906.
85. Castillo JJ, Mull N, Reagan JL, et al. Increased incidence of non-Hodgkin lymphoma, leukemia, and myeloma in patients with

diabetes mellitus type 2: a meta-analysis of observational studies. *Blood*. 2012;119:4845-4850.

86. Koene RJ, Prizment AE, Blaes A, et al. Shared risk factors in cardiovascular disease and cancer. *Circulation*. 2016;133:1104-1114.

SUPPORTING INFORMATION

Additional supporting information may be found online in the Supporting Information section at the end of the article.

How to cite this article: Boyne DJ, Mickle AT, Brenner DR, et al. Long-term risk of cardiovascular mortality in lymphoma survivors: A systematic review and meta-analysis. *Cancer Med*. 2018;7:4801-4813. <https://doi.org/10.1002/cam4.1572>