


Images in clinical hematology

Primary dural high grade B cell lymphoma mimicking subdural hematoma



Aya Nakaya *, Kazuyoshi Ishii, Shosaku Nomura

Kansai Medical University Medical Center, Osaka, Japan

ARTICLE INFO

Article history:

Received 5 November 2019

Accepted 8 January 2020

Available online 20 March 2020

Case

A 78-year-old woman came to the hospital because of headache and tumefaction of the right temporal area. There were no other neurological symptoms. Cranial magnetic resonance imaging (MRI) showed a low-density area underneath the osseous inner plate, simulating a subdural hematoma (Figure 1). The histopathological analysis revealed neoplastic proliferation of large lymphoid cells with pleomorphic nuclei. Upon immunostaining, neoplastic cells were positive for CD79a, CD10, BCL6 and C-MYC and were negative for CD3 and CD5 (Figure 2). The proliferation index (Ki67) was 55%. The diagnosis of primary dural large B-cell lymphoma was established. Such a presentation of aggressive lymphoma is extremely unusual.^{1,2}

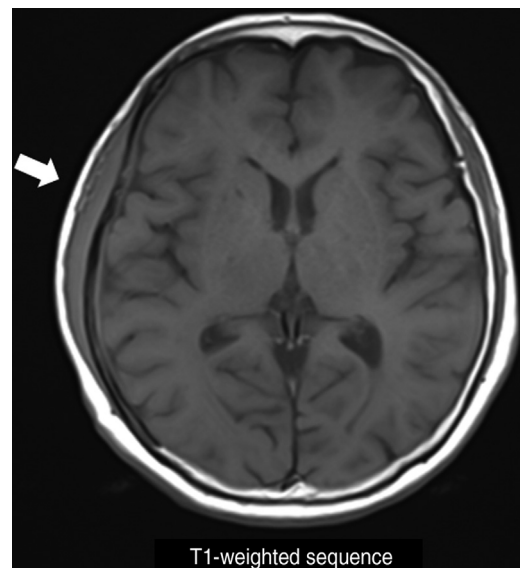


Figure 1 – MRI showing a hypointense subdural lesion in the right temporoparietal region (arrow) on a T1-weighted sequence.

* Corresponding author at: First Department of Internal Medicine, Kansai Medical University Medical Center, 10-15, Fumizono-cho, Moriguchi, Osaka 570-8507, Japan.

E-mail address: nakaya1016@yahoo.co.jp (A. Nakaya).

<https://doi.org/10.1016/j.htct.2020.01.006>

2531-1379/© 2020 Associação Brasileira de Hematologia, Hemoterapia e Terapia Celular. Published by Elsevier Editora Ltda. This is an open access article under the CC BY-NC-ND license (<http://creativecommons.org/licenses/by-nc-nd/4.0/>).

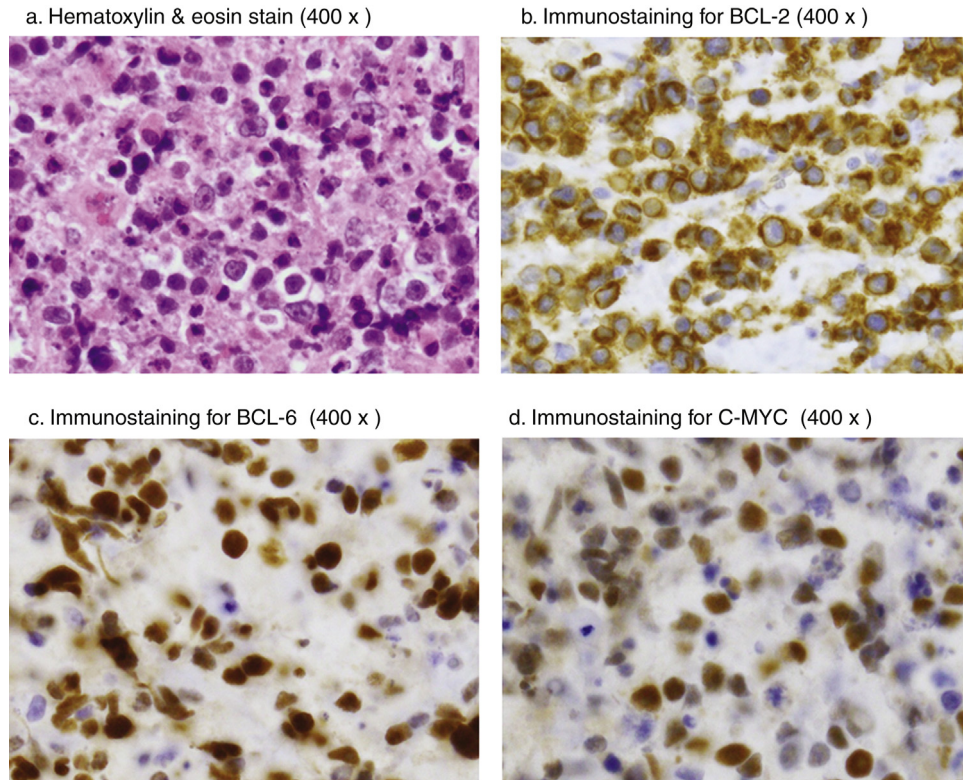


Figure 2 – Neoplastic cells. (a). Hematoxylin & eosin stain (400×). (b). Immunostaining for BCL-2 (400×). (c). Immunostaining for BCL-6 (400×). (d). Immunostaining for C-MYC (400×).

Conflicts of interest

The authors declare no conflicts of interest.

REFERENCES

1. Vemuri NV1, Karanam LS, Rambabu L, Rao VS, Kalyan K, Sateesh G. Subdural B Cell Lymphoma Imaging features

2. Fuente MI, Haggiagi A, Moul A, Young RJ, Sidani C, Markoe A, et al. Marginal zone dural lymphoma: the Memorial Sloan Kettering Cancer Center and University of Miami Experiences. *Leuk Lymphoma*. 2017;58(4):882–8.