

# Metabolomics Analysis and Biosynthesis of Rosmarinic Acid in *Agastache rugosa* Kuntze Treated with Methyl Jasmonate

Yeon Bok Kim<sup>1,9</sup>, Jae Kwang Kim<sup>2,9</sup>, Md Romij Uddin<sup>1</sup>, Hui Xu<sup>3</sup>, Woo Tae Park<sup>1</sup>, Pham Anh Tuan<sup>1</sup>, Xiaohua Li<sup>1</sup>, Eunsook Chung<sup>4</sup>, Jai-Heon Lee<sup>4</sup>, Sang Un Park<sup>1\*</sup>

**1** Department of Crop Science, Chungnam National University, Daejeon, Republic of Korea, **2** National Academy of Agricultural Science, Rural Development Administration, Suwon, Republic of Korea, **3** College of Life Science, Inner Mongolia University for Nationalities, Inner Mongolia, China, **4** Department of Genetic Engineering, Dong-A University, Busan, Republic of Korea

## Abstract

This study investigated the effect of methyl jasmonate (MeJA) on metabolic profiles and rosmarinic acid (RA) biosynthesis in cell cultures of *Agastache rugosa* Kuntze. Transcript levels of phenylpropanoid biosynthetic genes, i.e., *ArPAL*, *Ar4CL*, and *ArC4H*, maximally increased 4.5-fold, 3.4-fold, and 3.5-fold, respectively, compared with the untreated controls, and the culture contained relatively high amounts of RA after exposure of cells to 50  $\mu$ M MeJA. RA levels were 2.1-, 4.7-, and 3.9-fold higher after exposure to 10, 50, and 100  $\mu$ M MeJA, respectively, than those in untreated controls. In addition, the transcript levels of genes attained maximum levels at different time points after the initial exposure. The transcript levels of *ArC4H* and *Ar4CL* were transiently induced by MeJA, and reached a maximum of up to 8-fold at 3 hr and 6 hr, respectively. The relationships between primary metabolites and phenolic acids in cell cultures of *A. rugosa* treated with MeJA were analyzed by gas chromatography coupled with time-of-flight mass spectrometry. In total, 45 metabolites, including 41 primary metabolites and 4 phenolic acids, were identified from *A. rugosa*. Metabolite profiles were subjected to partial least square-discriminate analysis to evaluate the effects of MeJA. The results indicate that both phenolic acids and precursors for the phenylpropanoid biosynthetic pathway, such as aromatic amino acids and shikimate, were induced as a response to MeJA treatment. Therefore, MeJA appears to have an important impact on RA accumulation, and the increased RA accumulation in the treated cells might be due to activation of the phenylpropanoid genes *ArPAL*, *ArC4H*, and *Ar4CL*.

**Citation:** Kim YB, Kim JK, Uddin MR, Xu H, Park WT, et al. (2013) Metabolomics Analysis and Biosynthesis of Rosmarinic Acid in *Agastache rugosa* Kuntze Treated with Methyl Jasmonate. PLoS ONE 8(5): e64199. doi:10.1371/journal.pone.0064199

**Editor:** Turgay Unver, Cankiri Karatekin University, Turkey

**Received:** November 29, 2012; **Accepted:** April 10, 2013; **Published:** May 28, 2013

**Copyright:** © 2013 Kim et al. This is an open-access article distributed under the terms of the Creative Commons Attribution License, which permits unrestricted use, distribution, and reproduction in any medium, provided the original author and source are credited.

**Funding:** This study was supported by a grant from Basic Science Research Program through the National Research Foundation of Korea (NRF) funded by the Ministry of Education, Science and Technology (20110010231) and also partially from the Next-Generation BioGreen 21 Program (SSAC, PJ009520), Rural Development Administration, Republic of Korea. The funders had no role in study design, data collection and analysis, decision to publish, or preparation of the manuscript.

**Competing Interests:** The authors have declared that no competing interests exist.

\* E-mail: supark@cnu.ac.kr

<sup>9</sup> These authors contributed equally to this work.

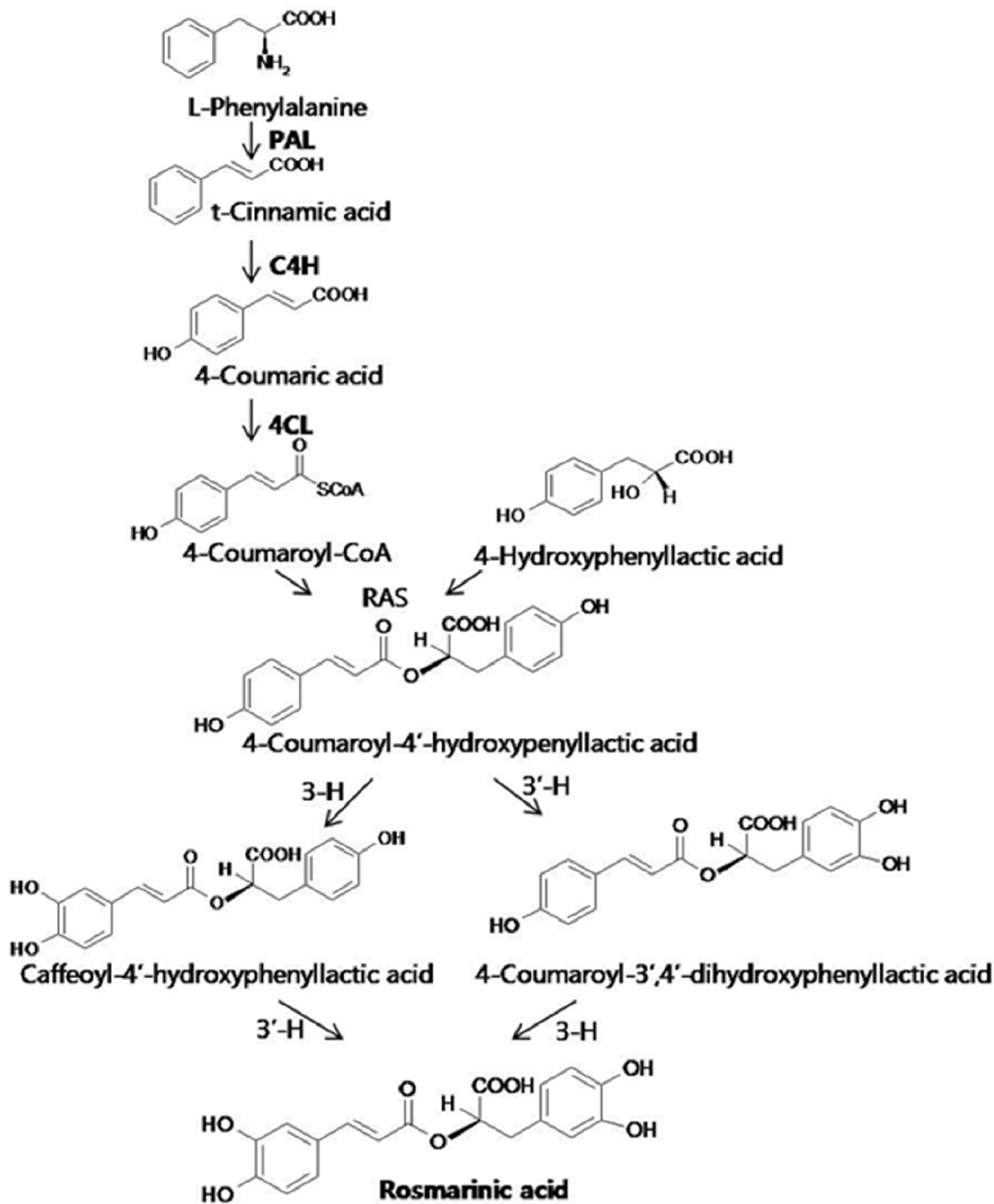
## Introduction

*Agastache rugosa* Kuntze, belonging to the mint family (Labiatae), is a perennial herb widely distributed in China, Japan, Korea, and Siberia. It is used in Chinese traditional medicine for the treatment of cholera, vomiting, and miasma, and has been reported to possess antitumor, antifungal, antiatherogenic, and cytotoxic activities [1–3]. Rosmarinic acid (RA) is an ester of caffeic acid and 3,4-dihydroxyphenyllactic acid found in plants. RA was initially isolated as a pure compound from the plant *Rosmarinus officinalis* [4] and is commonly found in the species Boraginaceae and the subfamily Nepetoideae of Lamiaceae [5]. RA exhibits a multitude of biological activities, including antiviral, antibacterial, anti-inflammatory, and antioxidant activities. Medicinal plants, herbs, and spices rich in RA are known for their beneficial effects on human health [6].

RA is synthesized via the phenylpropanoid pathway (Figure 1). Phenylalanine ammonia lyase (PAL) catalyzes the conversion of

phenylalanine to cinnamate. PAL also participates in the conversion of tyrosine to *p*-coumarate, albeit with lower efficiency [7]. Cinnamate 4-hydroxylase (C4H) catalyzes the synthesis of *p*-hydroxycinnamate from cinnamate, and 4-coumarate:coenzyme-A (CoA) ligase (4CL) converts *p*-coumarate to its coenzyme-A ester, activating it for reaction with malonyl CoA [8]. In the pathway leading to RA, condensation of 4-hydroxyphenyllactic acid with 4-coumaroyl-CoA is catalyzed by hydroxycinnamoyl-CoA:hydroxycinnamoyl transferase (RAS). In a final step, these reactions are catalyzed by two distinct cytochrome P450s: 3-hydroxycinnamoyl (3-H) and 3' hydroxycinnamoyl (3'-H) [9].

RA is readily accumulated in undifferentiated plant cell cultures, and in some cases, its concentrations are much higher than those in the plant itself [10]. The first plant cell cultures found to accumulate RA were derived from *Coleus blumei* [10,11].



**Figure 1. Proposed biosynthetic pathway of rosmarinic acid.** PAL, phenylalanine ammonia-lyase; C4H, cinnamate 4-hydroxylase; 4CL, 4-coumaroyl-CoA ligase; RAS, hydroxycinnamoyl-CoA:hydroxyphenyllactate hydroxycinnamoyl transferase.  
doi:10.1371/journal.pone.0064199.g001

In the plant biosynthetic pathway, phytohormone and microelement levels affect secondary metabolite accumulation in many *in vitro* plant cultures, but the most important factor is the elicitation process [12]. Methyl jasmonate (MeJA) and its associated free acid, jasmonic acid (JA), are important cellular regulators involved in diverse developmental processes, such as seed germination, root growth, fertility, fruit ripening, and senescence [13,14]. Genes involved in JA biosynthesis, secondary metabolism, and cell-wall formation, and those encoding stress-protective and defense proteins are upregulated by MeJA

treatment [15]. Recent studies have investigated the capability of JA and its methyl ester, MeJA, to induce the accumulation of various secondary metabolites [16–21].

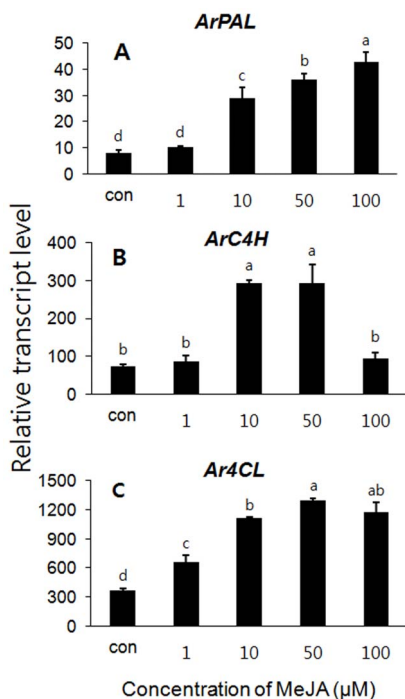
Secondary metabolites are derived from central or primary metabolic processes in plants. The primary metabolite profile is closely related to the phenotype of the organism and includes important nutritional characteristics [22,23]. In addition, metabolite profiling combined with chemometrics has proved to be useful in functional genomics research [24]. Metabolomics allows for classification of samples with diverse biological status, origin, or

**Table 1.** List of real-time RT-PCR primers used in this study.

Primer name	Sequence (5'→3')	Accession No.	Size (bp)
ArActin-RT (F)	ACCTCAAATAGCATGGGGAAAGT	JX087435	151
ArActin-RT (R)	GGCCGTTCTCTCACITTTATGCTA		
ArPAL-RT (F)	ACGGCTCCAACGGTCATAATAAT	AF326116	108
ArPAL-RT (R)	ATCCGCTTTACCTCCTCAAGGT		
ArC4H-RT (F)	GTTCGAGAGTGAGAATGATCCGT	AY616436	157
ArC4H-RT (R)	ATAATCCTTGAACAATTGCAGCC		
Ar4CL-RT (F)	ACATCTACTCGTTGAATTCGGTGC	AY587891	162
Ar4CL-RT (R)	AGTCGAAATTATCCACCAATGGA		

doi:10.1371/journal.pone.0064199.t001

quality by using chemometric techniques such as hierarchical clustering analysis (HCA), and partial least squares discriminant analysis (PLS-DA). Therefore, in this study, we investigated the effects of MeJA on RA biosynthesis and expression of phenylpropanoid biosynthetic genes in the cell cultures of *A. rugosa*. Additionally, hydrophilic metabolic profiling (including phenolics) in *A. rugosa* cells by using gas chromatography time-of-flight mass spectrometry (GC-TOFMS) coupled with chemometrics was applied to determine the phenotypic variation and analyze content relationships.



**Figure 2. Transcript levels after treatment with methyl jasmonate in suspension cell culture of *A. rugosa*.** Inducible transcript levels of (A) *ArPAL*, (B) *ArC4H*, and (C) *Ar4CL* when treated with different concentrations of MeJA. The longitudinal axis indicates the expression levels of genes relative to that of *actin*. Each value is the mean of three replicates, and error bars indicate SDs. Values represent LSD ( $p=0.05$ ).

doi:10.1371/journal.pone.0064199.g002

## Materials and Methods

### Cell Suspension Culture Conditions

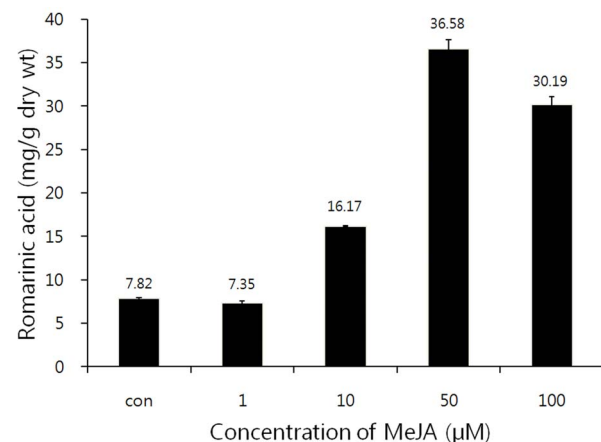
Cell cultures of *A. rugosa* were established from leaf explants-derived callus grown on MS medium containing 2 mg/L 2,4-dichlorophenoxyacetic acid (2,4-D) and 0.1 mg/L 6-Benzylaminopurine (BAP). Cell cultures were maintained in MS liquid medium and were sub-cultured at 14-day intervals. Cells were cultured at 120 rpm on a gyratory shaker at 25°C in a growth chamber under standard cool white fluorescent tubes with a flux rate of 35  $\mu\text{mol}\cdot\text{s}^{-1}\cdot\text{m}^{-2}$  and a 16 hr photoperiod. For biological replicates, three flasks were used for each individual and harvested them individually from each flask.

### Preparation and Application of MeJA

MeJA was dissolved in pure 100% ethanol to create stock solutions and then diluted as per experimental specification. To determine the concentrations of MeJA that promote maximum RA biosynthesis, different concentrations (0, 1, 10, 50, and 100  $\mu\text{M}$ ) of MeJA were added aseptically to the cultures at 10 days after cell inoculation for 4 days. The optimal concentration of 50  $\mu\text{M}$  for induction of RA biosynthesis, was used to treat the cell culture harvested for metabolic profiling. A time course investigation of gene expression was conducted (0, 1, 3, 6, 12, 24, and 48 hr) using the optimal concentration of 50  $\mu\text{M}$  MeJA. All cells were collected, frozen in liquid nitrogen, and stored at  $-80^{\circ}\text{C}$ . The experiments were performed with three independent samples for biological replicates.

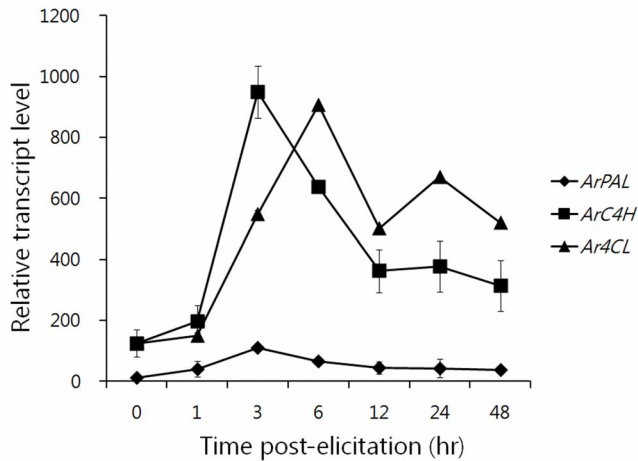
### Total RNA Isolation and Quantitative Real-time RT-PCR

Total RNA was isolated from cell cultures of *A. rugosa* using Plant total RNA mini kit (Geneaid, Taiwan) under the manufacturer's instruction. The quality and concentration of total RNA was assessed by using a NanoVue Plus Spectrophotometer (GE Health Care Life Sciences, USA) and 1.2% formaldehyde RNA agarose gel. Subsequently, total RNA (1  $\mu\text{g}$ ) was reverse-transcribed with ReverTra Ace- $\alpha$ -(Toyobo, Osaka, Japan) Kit and oligo (dT)<sub>20</sub> primer according to the manufacturer's protocol. The gene expression levels of *ArPAL*, *ArC4H*, and *Ar4CL* were analyzed using a CFX96 real-time system (BioRad, Hercules, CA, USA). Gene-specific primers (Table 1) were used as previously



**Figure 3. Time courses of rosmarinic acid production induced by application of MeJA with different concentrations in the suspension cell culture of *A. rugosa*.** Each value is the mean of three replicates, and error bars indicate SDs.

doi:10.1371/journal.pone.0064199.g003



**Figure 4. Time course of induction of phenylpropanoid biosynthetic genes by application of MeJA at 50  $\mu$ M in the suspension cell culture of *A. rugosa*.** The longitudinal axis indicates the expression levels of genes relative to that of *actin*. Each value is the mean of three replicates, and error bars indicate SDs. doi:10.1371/journal.pone.0064199.g004

described [25]. The SYBR Green quantitative real-time RT-PCR (qRT-PCR) assay was carried out in a total volume of 20  $\mu$ l, containing 10  $\mu$ l of 2X SYBR Green Real time PCR master mix (Toyobo, Osaka, Japan), 0.5  $\mu$ M (each) of specific primers, and template cDNA was diluted 10-fold. PCR conditions were as follows: one cycle of 95°C for 3 min, followed by 40 cycles of 95°C for 15 s, 72°C for 20 s and annealing temperature (55°C). *Actin* was used as control (GenBank accession no. JX087435). For the comparison of *ArPAL*, *ArC4H*, and *Ar4CL* expression in samples treated with MeJA, the relative quantification of *ArPAL*, *ArC4H*, and *Ar4CL* expression was achieved by calibrating their transcript level against *Actin*. The reaction was performed in triplicate.

#### HPLC Analysis of RA

RA content was analyzed according to the method described by Kim et al. [26] with a modification. Harvested cell cultures of *A. rugosa* were frozen in liquid N<sub>2</sub>, ground to a fine powder in mortar, and samples (1 g) were extracted with 80% methanol (10 ml) for 24 hr at 25°C. After centrifugation at 1000  $\times$  g for 5 min, the supernatant was filtered and reduced to dryness under vacuum dried, and dissolved in 1 ml methanol. The final extracts were filtered through a 0.45- $\mu$ m PTFE syringe filter (Advantec DISMIC-13HP, Toyo Roshi Kaisha, Ltd., Tokyo, Japan) for high performance liquid chromatography (HPLC) analysis. The extracts were analyzed by HPLC on a C<sub>18</sub> reverse phase column (4.6 $\times$ 250 mm; Ultrasphere, Beckman-Coulter) at room temperature. The solvent gradient used in this study was formed through with an initial proportion of mix of 70% solvent A (3% acetic acid in water) and 30% solvent B (methanol). After 50 minutes, the solvent gradient had reached 100% solvent B. The flow rate of the solvent was kept constant held at 1.0 ml min<sup>-1</sup>. Samples (20  $\mu$ l) were detected at 280 nm. We identified the RA by matching the retention times and spectral characteristics to those from single HPLC run of a known RA standard.

#### Metabolic Profiling

Polar metabolite extraction was performed as described previously [24]. A total of 10 mg of ground sample was extracted with 1 ml of a mixed solution of methanol/water/chloroform (2.5:1:1 by vol.). Ribitol solution (60  $\mu$ l, 0.2 mg/ml) was added as

an internal standard (IS). Extraction was performed at 37°C with a mixing frequency of 1200 rpm for 30 min, using a thermomixer compact (Eppendorf AG, Germany). The solutions were then centrifuged at 16,000  $\times$  g for 3 min. The polar phase (0.8 ml) was transferred into a new tube, and 0.4 ml of water was added before centrifugation in order to separate a nonpolar phase. The mixed contents of the tube were centrifuged at 16,000  $\times$  g for 3 min. The methanol/water phase containing hydrophilic metabolites was dried in a centrifugal concentrator (CVE-2000, EYELA, Japan) for 2 h, followed by a drying process in a freeze dryer for 16 h. Methoxime (MO)-derivatization was performed by adding 80  $\mu$ l of methoxyamine hydrochloride (20 mg/ml) in pyridine and shaking at 30°C for 90 min. Trimethylsilyl (TMS) etherification was performed by adding 80  $\mu$ l of MSTFA at 37°C for 30 min. GC-TOFMS was performed using an Agilent 7890A gas chromatograph (Agilent, Atlanta, GA, USA) coupled to a Pegasus HT TOF mass spectrometer (LECO, St. Joseph, MI). Derivatized sample (1  $\mu$ l) was separated on a 30-m  $\times$  0.25-mm I.D. fused-silica capillary column coated with 0.25- $\mu$ m CP-SIL 8 CB low bleed (Varian Inc., Palo Alto, CA, USA). The split ratio was set at 1:25. The injector temperature was 230°C. The helium gas flow rate through the column was 1.0 mL/min. The temperature program was as follows: Initial temperature 80°C for 2 min, followed by an increase to 320°C at 15°C/min, and a 10 min hold at 320°C. The transfer line and ion-source temperatures were 250 and 200°C, respectively. The scanned mass range was 85–600  $m/z$ , and the detector voltage was set at 1700 V.

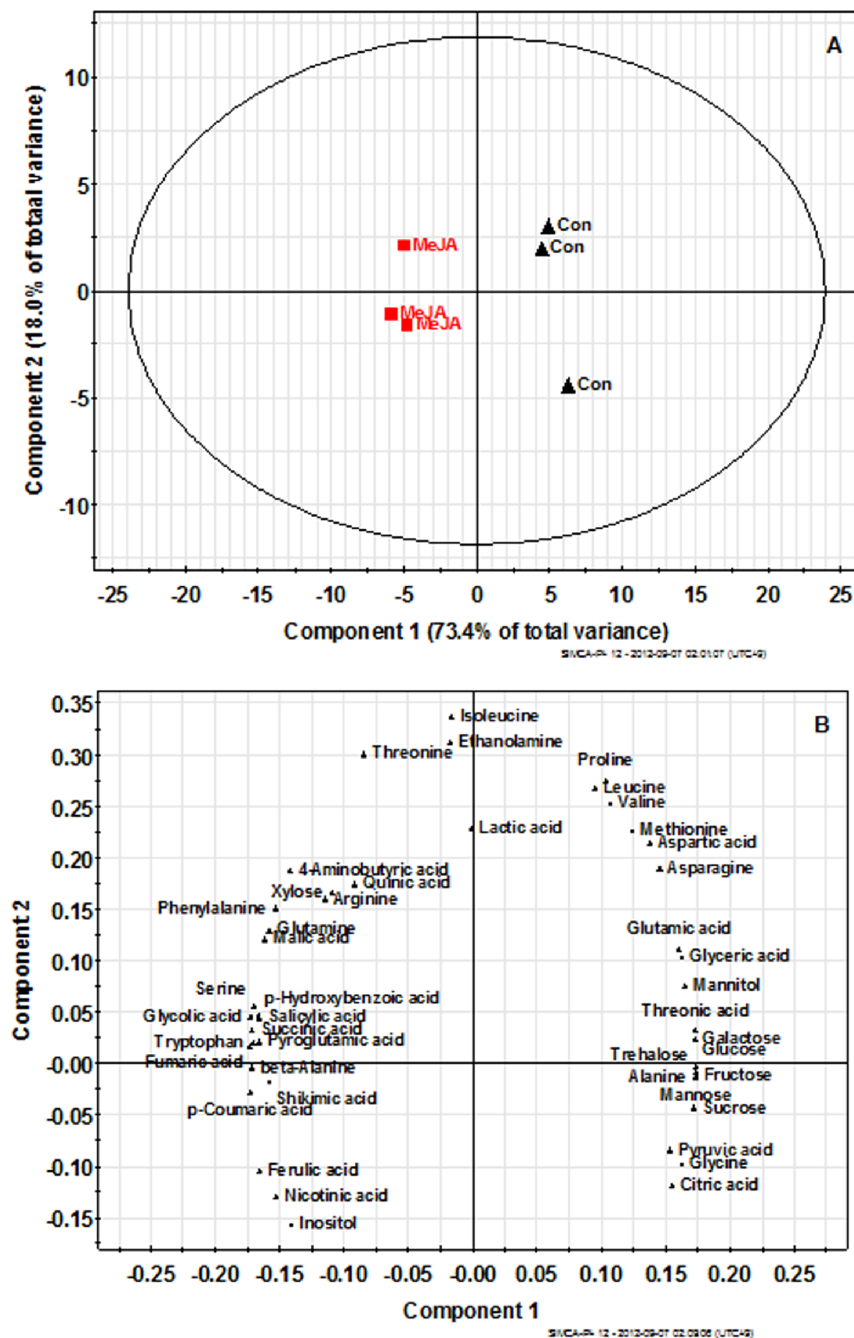
#### Statistical Analysis

For qRT-PCR statistical analysis, the data were analyzed by the computer software Statistical Analysis System (SAS version 9.2). All data are given as the mean and standard deviation of triplicate experiments. Treatment mean comparisons were performed with the Least Significant Difference (LSD). The relative quantification data acquired from GC-TOFMS was subjected to PLS-DA (SIMCA-P version 12.0; Umetrics, Umeå, Sweden) to evaluate the relationships in terms of similarity or dissimilarity among groups of multivariate data. The PLS-DA output consisted of score plots to visualize the contrast between different samples and loading plots to explain the cluster separation. The data file was scaled with unit variance scaling before all variables were subjected to the PLS-DA.

## Results and Discussion

### Inducible Expression of Phenylpropanoid Biosynthetic Genes in Cell Culture of *A. rugosa* with Different Concentrations of MeJA

To investigate the effects of MeJA on the inducible expression of phenylpropanoid biosynthetic genes in the cell culture of *A. rugosa*, cells were initially cultured for 5 days in MS basal media supplemented with 2 mg/L 2,4-D and 0.1 mg/L BAP and then treated with different concentrations of MeJA. Transcript levels of the *ArPAL*, *ArC4H* and *Ar4CL* phenylpropanoid biosynthetic genes increased with increasing MeJA concentration, and the transcript level of phenylpropanoid biosynthetic genes reached a maximum at 50  $\mu$ M MeJA (Figure 2). Transcript levels vary with concentrations of MeJA in different species. Previously it was reported that the expression levels of *AgPAL* and *AgC4H* in the suspension cells of *Angelica gigas* were the highest at 300  $\mu$ M MeJA and these levels are associated with the production of secondary metabolites [27]. At 50  $\mu$ M of MeJA-treated cells, the transcript levels of the *ArPAL*, *Ar4CL*, and *ArC4H* phenylpropanoid biosynthetic genes were increased 4.5-, 3.4- and 3.5-fold, respectively, compared with the untreated control. The transcript levels of *Ar4CL* were much



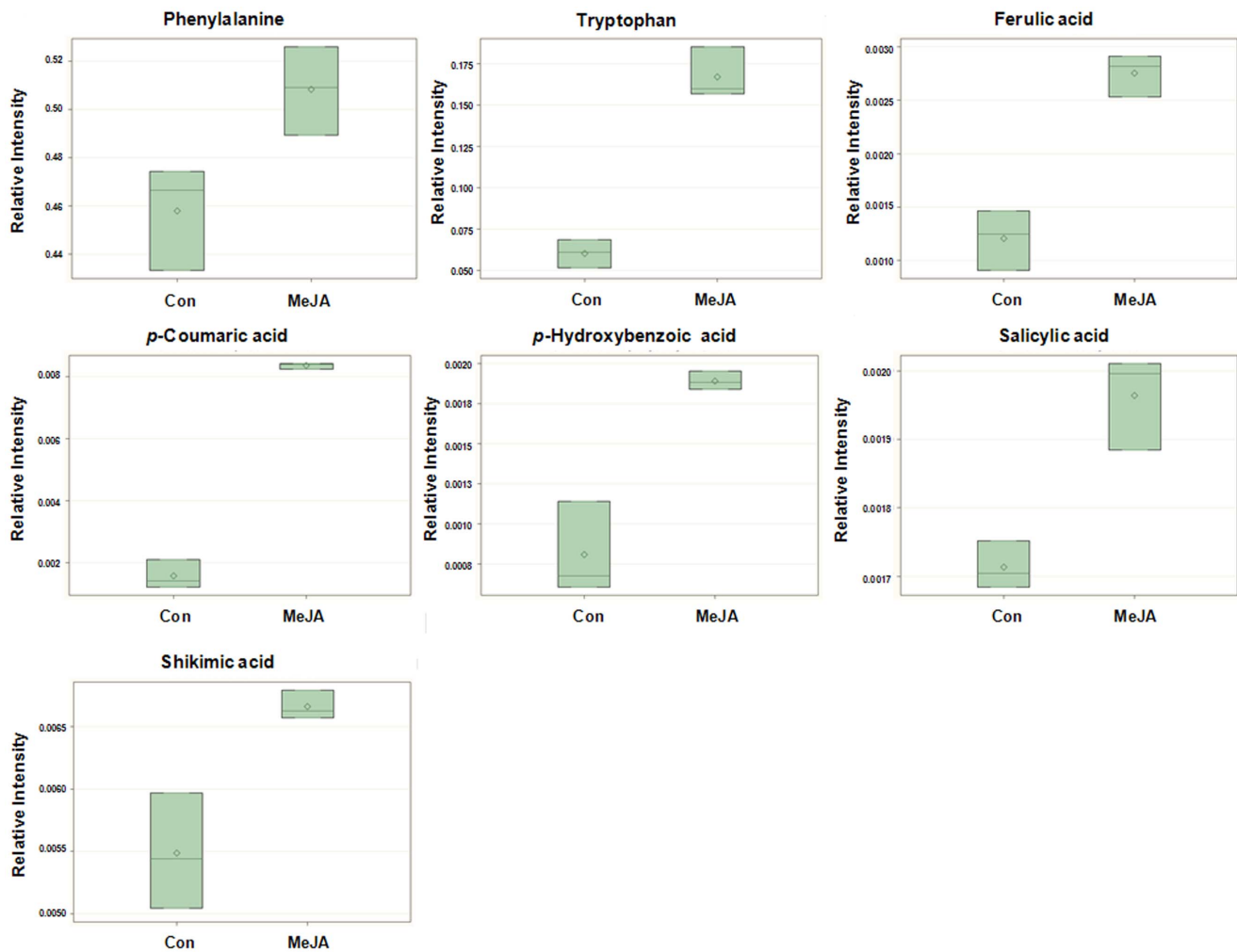
**Figure 5. Scores (A) and loading plots (B) of principal components 1 and 2 of the PLS-DA results obtained from polar metabolite data of the MeJA-treated *A. rugosa* cells and control cells.**  
doi:10.1371/journal.pone.0064199.g005

higher showing 36.0 and 4.4 times higher than those of *ArCAH* and *ArPAL*, respectively at 50  $\mu$ M MeJA (Figure 2). In another study, Yamamura et al. [28] and Tsuruga et al. [29] described that the activity of PAL, the entry point enzyme for the phenylpropanoid pathway was rapidly up-regulated after MeJA treatment in the *Lithospermum erythrorhizon* cell suspension cultures. The peak of LePAL activity exhibited about 11-fold higher in the MeJA-treated cells than in the control cells [29]. Therefore, Krzyzanowska et al. [30] suggested that enhanced PAL level will correspond to enhanced RA production.

#### Effect of Different Concentrations of MeJA on RA Accumulation

The dose-response experiment indicated that RA content varied widely depending on the concentrations of exogenous MeJA (Figure 3). Levels of RA accumulation increased with increasing MeJA concentrations up to 50  $\mu$ M, and then began to decline. RA levels were 2.1-, 4.7-, and 3.9-fold higher compared to untreated control, after exposure to 10, 50, and 100  $\mu$ M of exogenous MeJA, respectively (Figure 3). Cell suspension cultures derived from various plant species have shown that elicitation enhances the production of secondary metabolites. In the yeast extract-treated





**Figure 6. Box plots of aromatic amino acids, phenolic acids, and shikimic acid that were significantly different between the MeJA-treated *A. rugosa* cells and control cells.**  
doi:10.1371/journal.pone.0064199.g006

*L. erythrorhizon* cells suspension cultures, RA content increased after a lag period of 8 hr and then showed a maximum at 24 hr after treatment [31], MeJA strongly induced 10-fold RA accumulation compared with control cells [32]. Hakkim et al. [33] reported that sucrose (5.0%), phenylalanine (0.25 g/L), yeast extract (0.5 g/L), and MeJA (100  $\mu$ M) resulted in 2.7-, 4.1-, 7.0-, and 8.6-fold increases in RA content, respectively, compared with control cells, in *Ocimum sanctum* cell cultures. Jeong and Park [34] described several abiotic elicitors capable of enhancing growth and ginseng saponin biosynthesis in the hairy roots of *Panax ginseng*. Moreover, MeJA was highly effective in inducing both *trans*- and *cis*-resveratrol accumulation in *Vitis vinifera* cell suspension cultures [35]. Ketchum et al. [36] reported that cell suspension cultures of *Taxus canadensis* and *Taxus cuspidata* rapidly produced paclitaxel (Taxol) and other taxolids in response to elicitation with MeJA. In this study, RA content was the highest in the cell suspensions treated with 50  $\mu$ M MeJA (Figure 3) after 3 hr of culturing. In contrast, the addition of 100  $\mu$ M MeJA within 24 hr was the most effective dose to result the highest RA content in the *Mentha piperita* suspension culture [30].

#### The Effect of Exposure Length at Optimal MeJA on Expression of Phenylpropanoid Biosynthetic Genes in Cell Culture of *A. rugosa*

Transcript levels of the phenylpropanoid pathway genes *ArPAL*, *Ar4CL*, and *ArCAH* leading to RA biosynthesis in *A. rugosa* suspension culture increased after exposure to MeJA at 50  $\mu$ M. The extent to which the levels of transcript were affected by MeJA was related to the time of exposure of the *A. rugosa* suspension culture to jasmonates. As shown in Figure 2, the transcript levels of *ArPAL*, *Ar4CL*, and *ArCAH* reached maximum values at 50  $\mu$ M MeJA. The accumulation of *ArPAL*, *Ar4CL*, and *ArCAH* transcripts was monitored over 0, 1, 3, 6, 12, 24, and 48 hr periods treated with 50  $\mu$ M MeJA. Transcripts of different RA biosynthetic genes responded differently to MeJA exposure. Shortly after the application of MeJA, transcript levels were comparable to those of the control, although higher levels were observed at later time points (Figure 4). The time following initial exposure when transcript levels were highest differed among the genes. In the case of the *ArPAL* and *ArCAH* genes, the highest level of transcript accumulation occurred 3 hr after initial exposure to 50  $\mu$ M MeJA. At 3 hr, levels of *ArPAL* and *ArCAH* transcripts were 9.2- and 7.8-fold higher, respectively, than in the control at 0 hr (Figure 4). The

largest increase in transcript accumulation was apparent for the *Ar4CL* gene 6 hr after MeJA treatment, when the *Ar4CL* transcript was 7.4-fold more abundant than that in control at 0 hr (Figure 4).

Our observation is supported by previous work of Mizukami et al. [32], who observed that phenylalanine ammonia-lyase (PAL) and 4-hydroxyphenylpyruvate reductase (HPPR) activities were induced rapidly and transiently during RA accumulation, whereas tyrosine aminotransferase (TAT) activity exhibited only a slight increase in *L. erythrorhizon* cell suspension cultures. Recently, our group reported that the high transcript levels of *ArPAL*, *ArCAH*, and *Ar4CL* may explain the high values of the flavonoid, acacetin, and its derivative, tilianin, in the flowers and leaves of *A. rugosa* [25]. The expressions of phenylpropanoid biosynthetic genes (*PAL*, *CAH*, and *4CL*) were reported to correlate with the flavonoid content in several plants [36–40]. Park et al. [27] pointed out that MeJA plays an important role in the elicitation procedure, causing either immediate or circuitous activation of the genes involved in secondary metabolism.

The results of this study indicate that the addition of MeJA induced increased transcript levels of *ArPAL*, *ArCAH*, and *Ar4CL*, and enhanced RA accumulation in cell suspension cultures, compared with the control.

### GC-TOFMS Analysis of Polar Metabolites

In this study, low-molecular-weight molecules from *A. rugosa* cells were identified by GC-TOFMS. ChromaTOF software was used to assist with peak location. Peak identification was performed by comparison with reference compounds and the use of an in-house library. In addition, identification of amino acids, sugars, and phenolic acids was performed using direct comparison of the sample mass chromatogram with mass chromatograms of commercially available standard compounds, which were obtained by a similar MO/TMS derivatization and GC-TOFMS analysis. In total, 45 metabolites, including 19 amino acids, 16 organic acids, 7 sugars, 2 sugar alcohols, and a single amine, were detected in *A. rugosa* cells (Figure S1). Of these, 4 phenolics (ferulic, *p*-coumaric, *p*-hydroxybenzoic, and salicylic acid) were identified in the samples. Quantification was performed using selected ions (Table S1), and the quantitative calculations of all analytes were based on the peak area ratios relative to that of the IS (Table S2).

Forty-five metabolites were subjected to PLS-DA to identify differences between the metabolite profiles of MeJA-treated cells and controls (Figure 5). The loading plot of the PLS-DA reveals the magnitude and direction of correlation of the original variables with principal components. All phenolic acids as well as aromatic amino acids were clustered in the right of the loading plot, while threonic acid and sugars such as fructose, galactose, mannose, and sucrose were clustered in the left of the loading plot. The first principal component resolved the metabolite profiles of MeJA-treated cells and control cells and accounted for 73% of the variation, whereas the second component accounted for an additional 17% of the variation. The results indicated that compared to the control group, the level of aromatic amino acids and phenolic acids contents were increased, whereas threonic acid and sugars were decreased after treatment with MeJA. Similar results were reported by Liang et al. [41] where in *Brassica rapa* leaves treated with MeJA, hydroxycinnamates, and glucosinolate were elevated and glucose, sucrose, and amino acids decreased. In another study, Broeckling et al. [42] also reported lower sucrose levels in MeJA- and yeast-elicited samples than those in controls, suggesting that at least some of the effects observed in the primary metabolic pool are a consequence of fundamental metabolic

repartitioning of carbon resources rather than specific induction elicited by a stimulus.

Our results revealed correlations between metabolites that participate in similar pathways and demonstrated the robustness of the present experimental system. Furthermore, in addition to secondary metabolites, several primary metabolites such as  $\beta$ -alanine, GABA and succinic acid accumulated after MeJA elicitation. The accumulation of these metabolites cannot be explained by their ecological functions or through common catabolic phenomena such as protein degradation.  $\beta$ -alanine, GABA, and succinic acid levels were elevated in MeJA-treated cells [42].

The levels of all aromatic amino acids, phenolic acids, and shikimic acid were higher in MeJA-treated cells than in the control cells (Figure 6). It has been reported that the aromatic amino acids phenylalanine, tyrosine, and tryptophan in plants are synthesized via the shikimate pathway, and the branched aromatic amino acids biosynthesis pathway both serve as precursors of numerous of secondary metabolites such as pigments, alkaloids, hormones, and cell wall components [43]. The aromatic amino acids of [<sup>11</sup>C]Tyrosine, [<sup>11</sup>C]phenylalanine, and [<sup>11</sup>C]tryptophan were increased by 1.5-, 12-, and 12-fold, respectively, compared to controls, at 4 h after MeJA treatment in *Nicotiana tabacum* [44]. This observation suggested that MeJA could cause rapid changes in [<sup>11</sup>C]photosynthate pools, thus favoring increased partitioning of new carbon into amino acids, whereas MeJA could also impart selective control over the shikimate pathway, giving rise to differential partitioning of new carbon into its metabolites.

### Conclusion

Using GC-TOFMS, we were able to distinguish changes in the levels of a wide range of metabolites such as aromatic amino acids, phenolic acids, and shikimic acids in MeJA-treated cultures of *A. rugosa*. Phenolic acids and aromatic amino acids are produced from the shikimate pathway. The induction of both aromatic amino acids and phenolic acids was observed in cells as a response to MeJA treatment. This observation suggests that metabolomics can assist in dissecting mechanisms regulating conversion of primary to secondary metabolism in plants. The expression of transcripts involved in the phenylpropanoid biosynthetic pathway in addition to the changes in RA and various primary metabolites increased after MeJA treatment compared to controls, indicating that MeJA elicitor induces differential transcriptional and metabolic reprogramming in suspension cultures of *A. rugosa*. Therefore, future studies should be aimed at further improving RA compound production in cell suspension cultures of *A. rugosa* used in the pharmaceuticals.

### Supporting Information

**Figure S1 Selected ion chromatograms of metabolites extracted from *A. rugosa* as MO/TMS derivatives separated on a 30 m × 0.25 mm I.D. fused silica capillary column coated with 0.25  $\mu$ m CP-SIL 8 CB low-bleed stationary phase.** Peak identification: 1 pyruvic acid, 2 lactic acid, 3 valine, 4 alanine, 5 glycolic acid, 3' valine, 6 serine, 7 ethanolamine, 8 leucine, 9 isoleucine, 10 proline, 11 nicotinic acid, 12 glycine, 13 succinic acid, 14 glyceric acid, 15 fumaric acid, 6' serine, 16 threonine, 17  $\beta$ -alanine, 18 malic acid, 19 salicylic acid, 20 aspartic acid, 21 methionine, 22 pyroglutamic acid, 23 4-aminobutyric acid, 24 threonic acid, 25 arginine, 26 glutamic acid, 27 phenylalanine, 28 *p*-hydroxybenzoic acid, 29 xylose, 30 asparagine, 31 glutamine, 32 shikimic acid, 33 citric acid, 34 quinic acid, 35 fructose, 35' fructose, 36 galactose, 37 glucose, 38

mannose, 39 mannitol, 40 *p*-coumaric acid, 41 inositol, 42 ferulic acid, 43 tryptophan, 44 sucrose, 45 trehalose, IS internal standard (ribitol). (DOCX)

**Table S1 The detected chromatographic and spectro-metric data of the 45 identified compounds analyzed by GC-TOFMS.** (DOCX)

## References

- Hong JH, Choi JH, Oh SR, Lee HK, Park JH, et al. (2001) Inhibition of cytokine-induced vascular cell adhesion molecule-1 expression; possible mechanism for anti-atherogenic effect of *Agastache rugosa*. *FEBS Lett* 495: 142–147.
- Shin S, Kang CA (2003) Antifungal activity of the essential oil of *Agastache rugosa* Kuntze and its synergism with ketoconazole. *Lett Appl Microbiol* 36: 111–115.
- Oh HM, Kang YJ, Kim SH, Lee YS, Park MK, et al. (2005) *Agastache rugosa* leaf extract inhibits the iNOS expression in ROS 17/2.8 cells activated with TNF- $\alpha$  and IL-1 $\beta$ . *Arch Pharm Res* 28: 305–310.
- Scarpati ML, Oriente G (1958) Isolamento e costituzione dell'acido rosmarinico (dal rosmarinus off.). *Ric Sci* 28: 2329–2333.
- Petersen M, Simmonds MSJ (2003) Rosmarinic acid. *Phytochemistry* 62: 121–125.
- Parnham MJ, Kesselring K (1985) Rosmarinic acid. *Drugs Future* 10: 756–757.
- MacDonald MJ, D'Cunha GB (2007) A modern view of phenylalanine ammonia lyase. *Biochem Cell Biol* 85: 273–282.
- Vogt T (2010) Phenylpropanoid biosynthesis. *Mol Plant* 3: 2–20.
- Petersen M (1997) Cytochrome P450-dependent hydroxylation in the biosynthesis of rosmarinic acid in *Coleus*. *Phytochemistry* 4: 51165–1172.
- Zenk MM, El-Shangi H, Ulbrich B (1977) Production of rosmarinic acid by cell suspension cultures of *Coleus blumei*. *Naturwissenschaften* 64: 585–586.
- Razzaque A, Ellis BE (1997) Rosmarinic acid production in *Coleus* cell cultures. *Planta* 137: 287–291.
- Smetanska I (2008) Production of secondary metabolites using plant cell cultures. *Adv Biochem Engin Biotechnol* 111: 187–228.
- Creelman RA, Rao MV (2002) The oxylipin pathway in Arabidopsis. In *The Arabidopsis Book* (Somerville, CR and Meyerowitz, EM, eds), doi10.1199/tab.0012, American Society of Plant Biologists.
- Wasternack C, Hause B (2002) Jasmonates and octadecanoids: signals in plant stress responses and development. *Prog Nucleic Acid Res Mol Biol* 72: 165–221.
- Cheong JJ, Choi YD (2003) Methyl jasmonate as a vital substance in plants. *Trends in Genetics* 19: 409–413.
- Kim OT, Bang KH, Kim YC, Hyun DY, Kim MY, et al. (2009) Upregulation of ginsenoside and gene expression related to triterpene biosynthesis in ginseng hairy root cultures elicited by methyl jasmonate. *Plant Cell Tiss Organ Cult* 98: 25–33.
- Korsangruang S, Soonthornchareonnon N, Chintapakorn Y, Saralamp P, Prathantururug S (2010) Effects of abiotic and biotic elicitors on growth and isoflavonoid accumulation in *Pueraria candollei* var. *candollei* and *P. candollei* var. *mirifica* cell suspension cultures. *Plant Cell Tiss Organ Cult* 103: 333–342.
- Lystvan K, Belokurova V, Sheludko Y, Ingham JL, Prykhodko V, et al. (2010) Production of bakuchiol by *in vitro* systems of *Psoralea drupacea* Bge. *Plant Cell Tiss Organ Cult* 101: 99–103.
- Rhee HS, Cho HY, Son SY, Yoon SYH, Park JM (2010) Enhanced accumulation of decursin and decursinol angelate in root cultures and intact roots of *Angelica gigas* Nakai following elicitation. *Plant Cell Tiss Organ Cult* 101: 295–302.
- Bonfill M, Mangas S, Moyano E, Cusido RM, Palazon J (2011) Production of centellosides and phytoosterols in cell suspension cultures of *Centella asiatica*. *Plant Cell Tiss Organ Cult* 104: 61–67.
- Coste A, Vlase L, Halmagyi A, Deliu C, Coldea G (2011) Effects of plant growth regulators and elicitors on production of secondary metabolites in shoot cultures of *Hypericum hirsutum* and *Hypericum maculatum*. *Plant Cell Tiss Organ Cult* 106: 279–288.
- Hoekenga OA (2008) Using metabolomics to estimate unintended effects in transgenic crop plants: problems, promises, and opportunities. *J Biomol Tech* 19: 159–166.
- Kok EJ, Keijer J, Kleter GA, Kuiper HA (2008) Comparative safety assessment of plant-derived foods. *Reg Toxicol Pharmacol* 50: 98–113.
- Kim JK, Park SY, Lee SM, Lim SH, Kim HJ, et al. (2013) Unintended polar metabolite profiling of carotenoid-biofortified transgenic rice reveals substantial equivalence to its non-transgenic counterpart. *Plant Biotechnol Rep* 7: 121–128.
- Tuan PA, Park WT, Xu H, Park NI, Park SU (2012) Accumulation of tilianin and rosmarinic acid and expression of phenylpropanoid biosynthetic genes in *Agastache rugosa*. *J Agric Food Chem* 60: 5945–5951.
- Kim HK, Oh SR, Lee HK, Huh H (2001) Benzothiadiazole enhances the elicitation of rosmarinic acid production in a suspension culture of *Agastache rugosa* O. Kuntze. *Biotechnol Lett* 23: 55–60.
- Park JH, Park NI, Xu H, Park SU (2010) Cloning and characterization of phenylalanine ammonia-lyase and cinnamate 4-hydroxylase and pyranocoumarin biosynthesis in *Angelica gigas*. *J Nat Prod* 73: 1394–1397.
- Yamamura Y, Ogihara Mizukami HY, Mizukami H (2001) Cinnamic acid 4-hydroxylase from *Lithospermum erythrorhizon*: cDNA cloning and gene expression. *Plant Cell Rep* 20: 655–662.
- Tsuruga A, Terasaka K, Kamiya K, Satake T, Mizukami H (2006) Elicitor-induced activity of isorinic acid 3'-hydroxylase, an enzyme catalyzing the final step of rosmarinic acid biosynthesis in *Lithospermum erythrorhizon* cell suspension cultures. *Plant Biotechnol* 23: 297–301.
- Krzyzanowska J, Czubacka A, Pecio L, Przybys M, Doroszewska T, et al. (2012) The effects of jasmonic acid and methyl jasmonate on rosmarinic acid production in *Mentha x piperita* cell suspension cultures. *Plant Cell Tiss Organ Cult* 108: 73–81.
- Mizukami H, Ogawa T, Ohashi H, Ellis BE (1992) Introduction of rosmarinic acid biosynthesis in *Lithospermum erythrorhizon* cell suspension culture by yeast extract. *Plant cell Rep* 11: 480–483.
- Mizukami H, Tabira Y, Ellis BE (1993) Methyl jasmonate-induced rosmarinic acid biosynthesis in *Lithospermum erythrorhizon* cell suspension cultures. *Plant cell Rep* 12: 706–709.
- Hakkim FL, Kalyani S, Essa M, Girija S, Song H (2011) Production of rosmarinic in *Ocimum sanctum* cell cultures by the influence of sucrose, phenylalanine, yeast extract, and methyl jasmonate. *Int Biol Med Res* 2: 1070–1074.
- Jeong GA, Park DH (2007) Enhanced secondary metabolite biosynthesis by elicitation in transformed plant root system. *Appl Biochem Biotechnol* 130: 436–446.
- Tassoni A, Fornale S, Franceschetti M, Musiani F, Michael AJ, et al. (2005) Jasmonates and Na-orthovanadate promote resveratrol production in *Vitis vinifera* cv. Barbera cell cultures. *New Phytol* 166: 895–905.
- Ketchum REB, Gibson DM, Croteau RB, Shuler M (1998) The kinetics of taxoid accumulation in cell suspension cultures of taxus following elicitation with methyl jasmonate. *Biotech and Bioengin* 62: 97–105.
- Xu F, Cai R, Cheng S, Du H, Wang Y, et al. (2008) Molecular cloning, characterization and expression of phenylalanine ammonia-lyase gene from *Ginkgo biloba*. *Afr J Biotechnol* 7: 721–729.
- Rani A, Singh K, Sood P, Kumar S, Ahuja P (2009) *p*-Coumarate:CoA ligase as a key gene in the yield of catechins in tea [*Camellia sinensis* (L.) O. Kuntze]. *Funct Integr Genomics* 9: 271–275.
- Singh K, Kumar S, Rani A, Gulati A, Ahuja P (2009) Phenylalanine ammonia-lyase (PAL) and cinnamate 4-hydroxylase (C4H) and catechins (flavan-3-ols) accumulation in tea. *Funct Integr Genomics* 9: 125–134.
- Weitzel C, Petersen M (2010) Enzymes of phenylpropanoid metabolism in the important medicinal plant *Melissa officinalis* L. *Planta* 232: 731–742.
- Liang YS, Choi YH, Kim HK, Linthorst HJM, Verpoorte R (2006) Metabolomic analysis of methyl jasmonate treated *Brassica rapa* leaves by 2-dimensional NMR spectroscopy. *Phytochemistry* 67: 2503–2511.
- Broeckling CD, Huhman DV, Farag MA, Smith JT, May GD, et al. (2005) Metabolic profiling of *Medicago truncatula* cell cultures reveals the effects of biotic and abiotic elicitors on metabolism. *J Exp Bot* 56: 323–336.
- Maeda H, Dudareva N (2012) The shikimate pathway and aromatic amino acid biosynthesis in plants. *Annu Rev Plant Biol* 63: 73–105.
- Hanik N, Gómez S, Best M, Schueller M, Orians CM, et al. (2010) Partitioning of new carbon as <sup>13</sup>C in *Nicotiana tabacum* reveals insight into methyl jasmonate induced changes in metabolism. *J Chem Ecol* 36: 1058–67.

**Table S2 Forty-five metabolite contents in MeJA-treated *A. rugosa* cells.** (DOCX)

## Author Contributions

Conceived and designed the experiments: J-HL SUP. Performed the experiments: YBK JKK HX PAT WTP XL. Analyzed the data: YBK JKK EC. Wrote the paper: YBK JKK MRU SUP.