

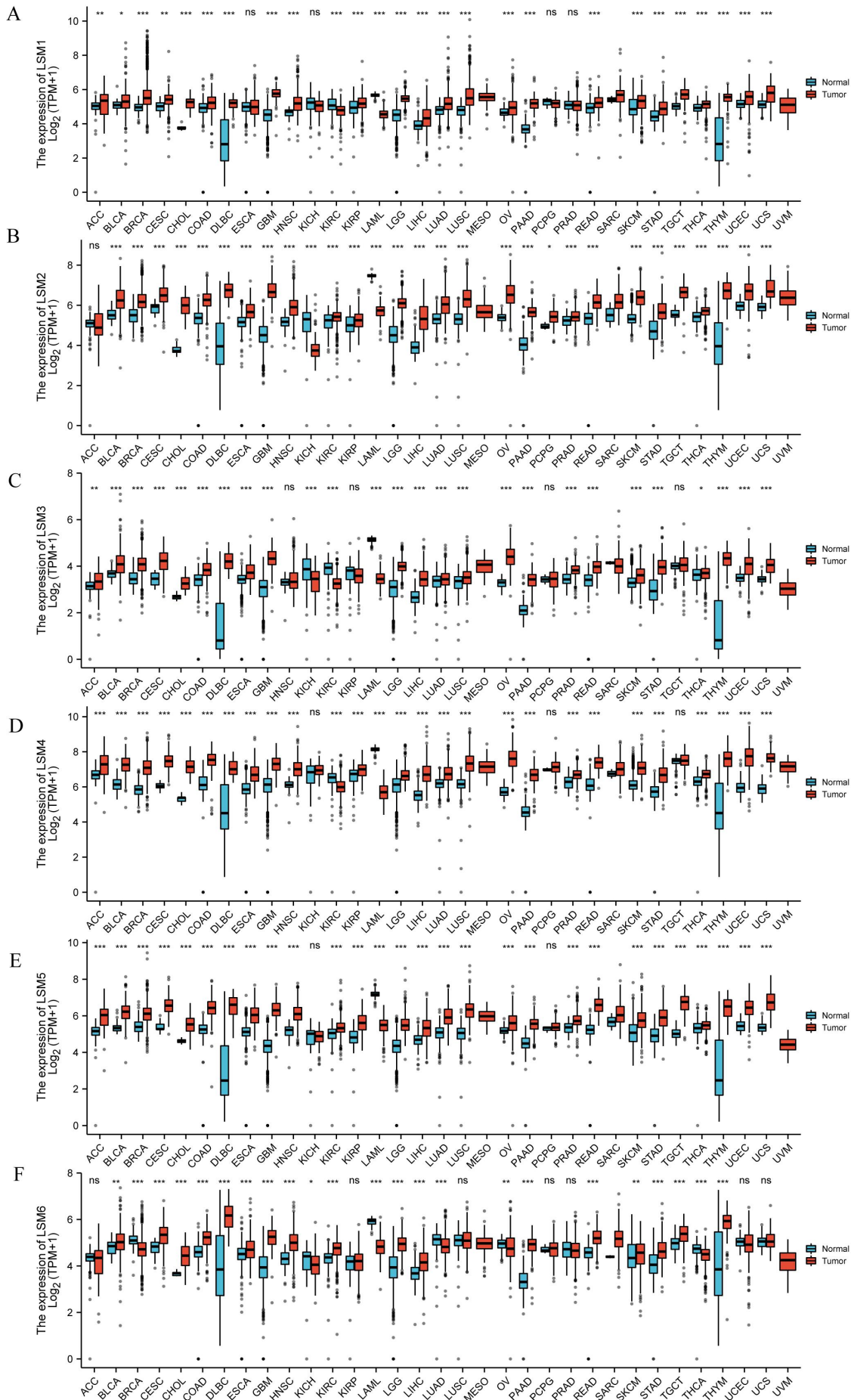
*Supplementary Material*

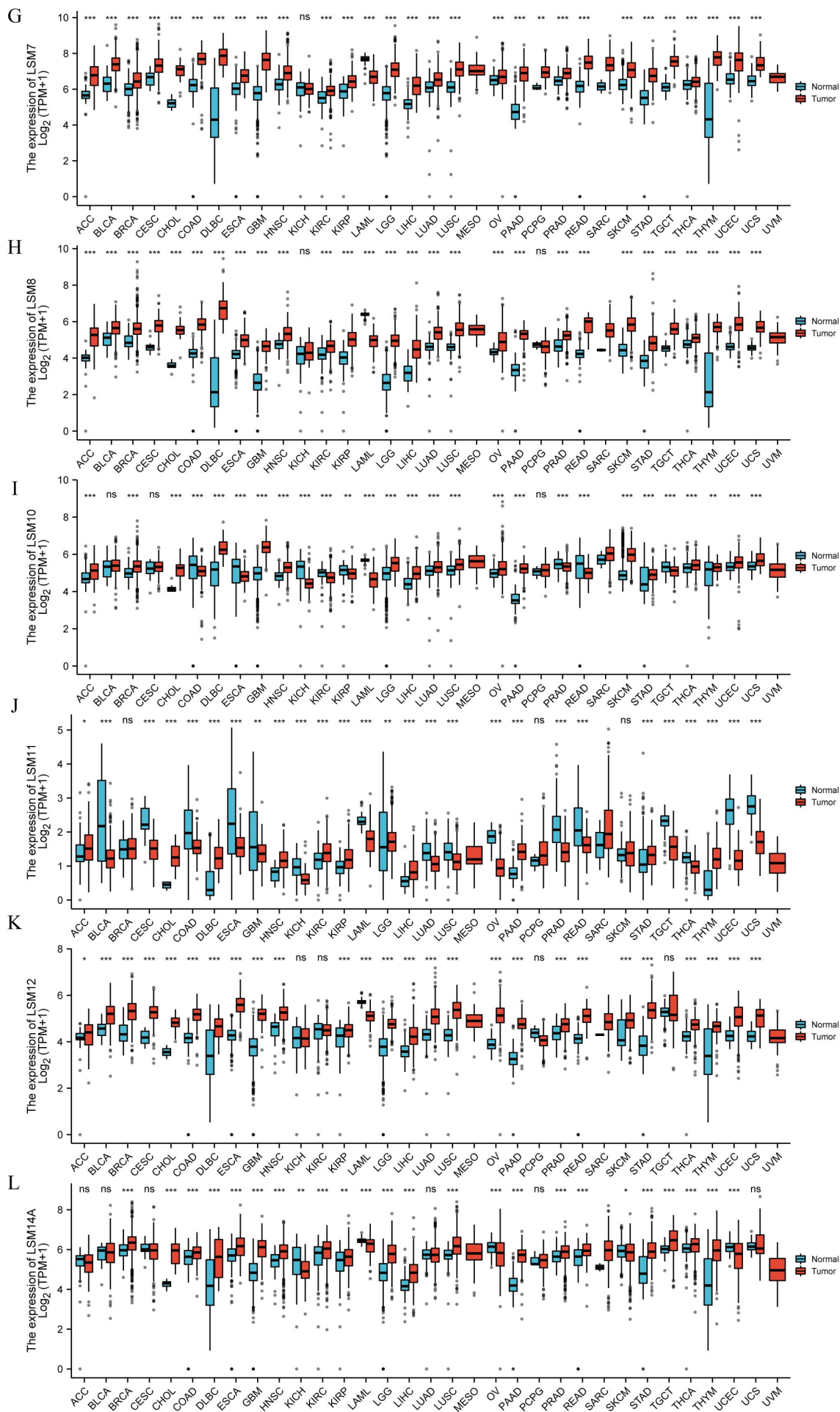
**Identification of LSM Family Members as Novel Chemoresistance  
Predictive and Therapeutic Biomarkers for Gastric Cancer**

**Qianhui Liu<sup>1†</sup>, Qinghai Lian<sup>2†</sup>, Yingqiu Song<sup>1</sup>, Shangbin Yang<sup>1</sup>, Changchang Jia<sup>2\*</sup>, and Jiafeng Fang<sup>1\*</sup>**

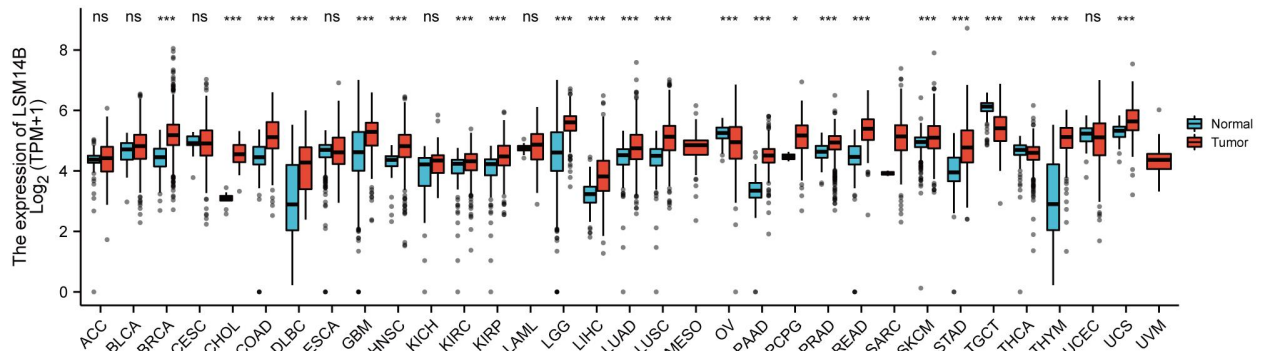
**\* Correspondence:** Jiafeng Fang\* [fangjf@mail.sysu.edu.cn](mailto:fangjf@mail.sysu.edu.cn)

Supplementary Material

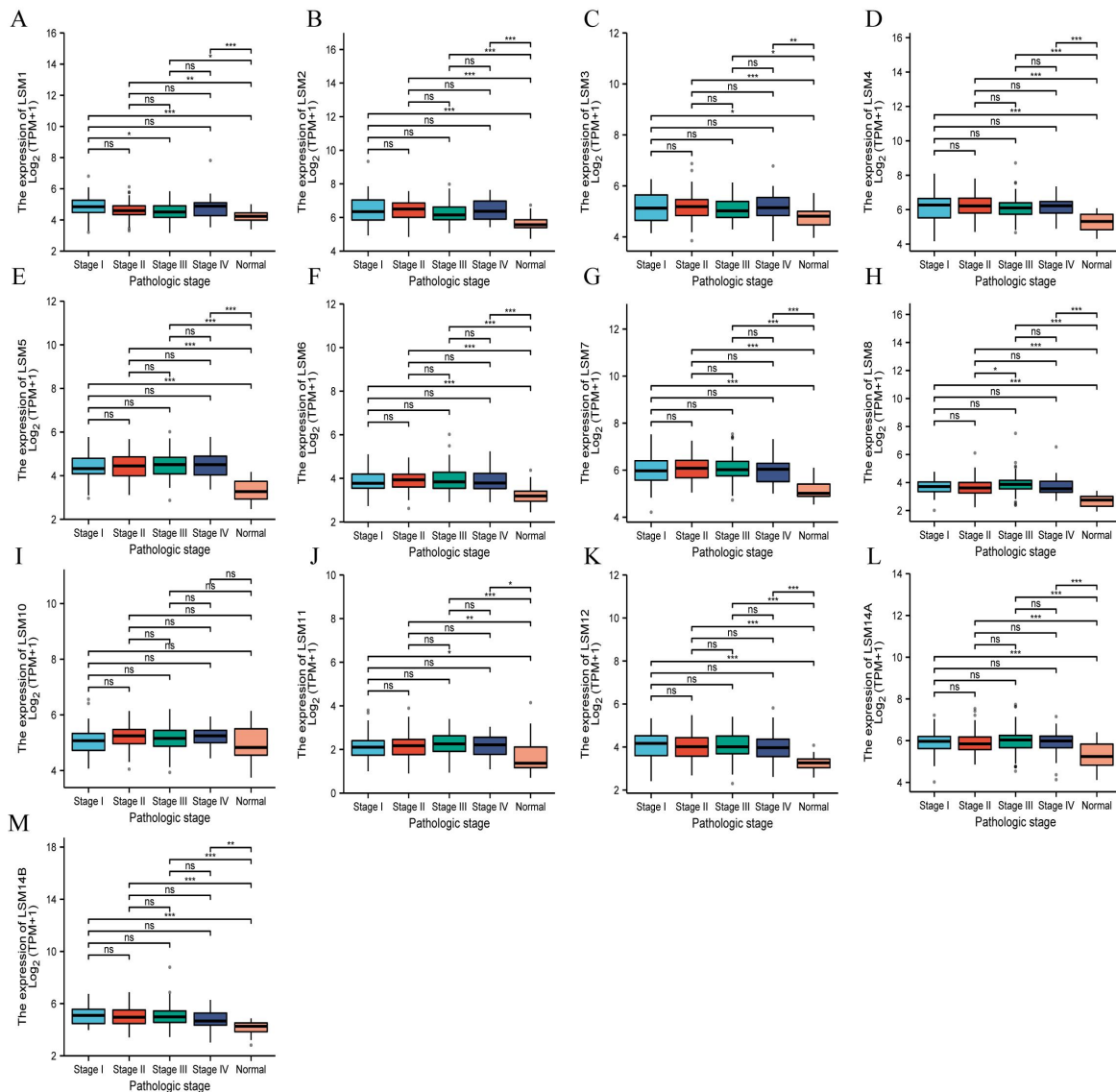




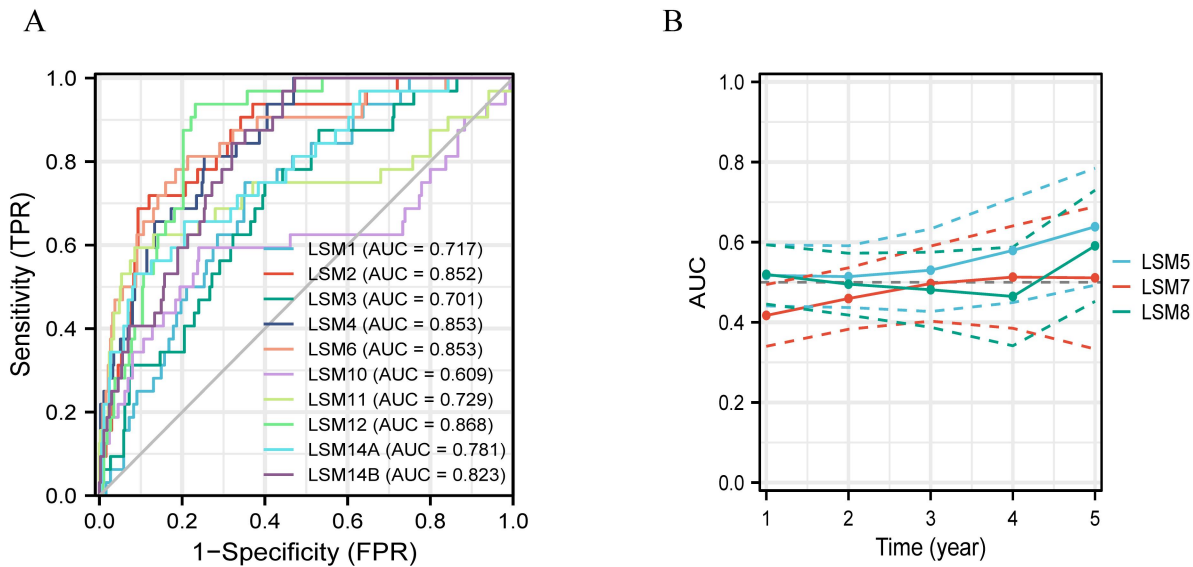
M



**Supplementary Figure 1.** Expression level of 13 LSM members in 33 types of cancer tissues and their corresponding normal tissues.



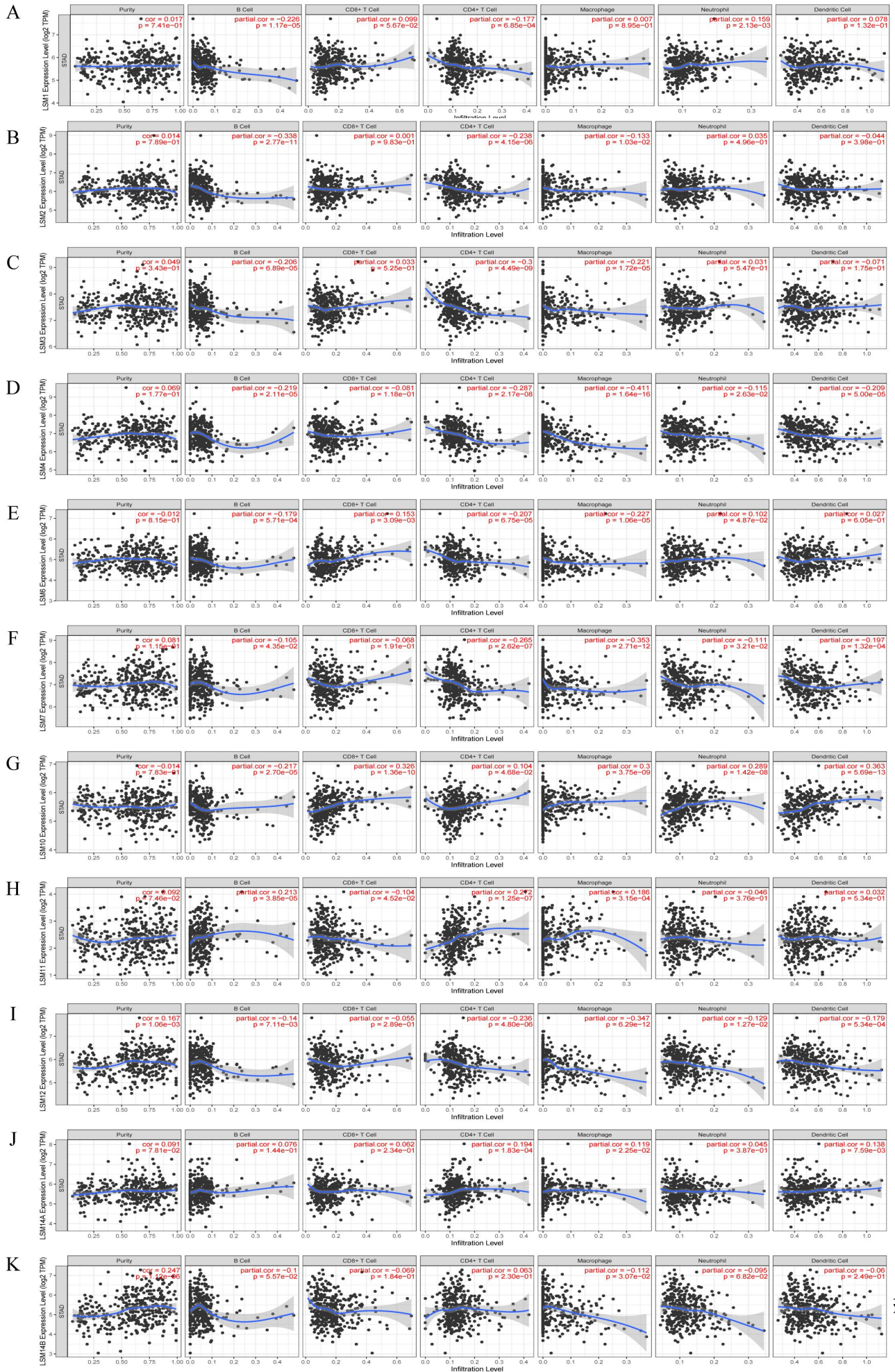
**Supplementary Figure 2.** Relationship between the mRNA expression of LSM genes and individual pathological stage of GC patients.



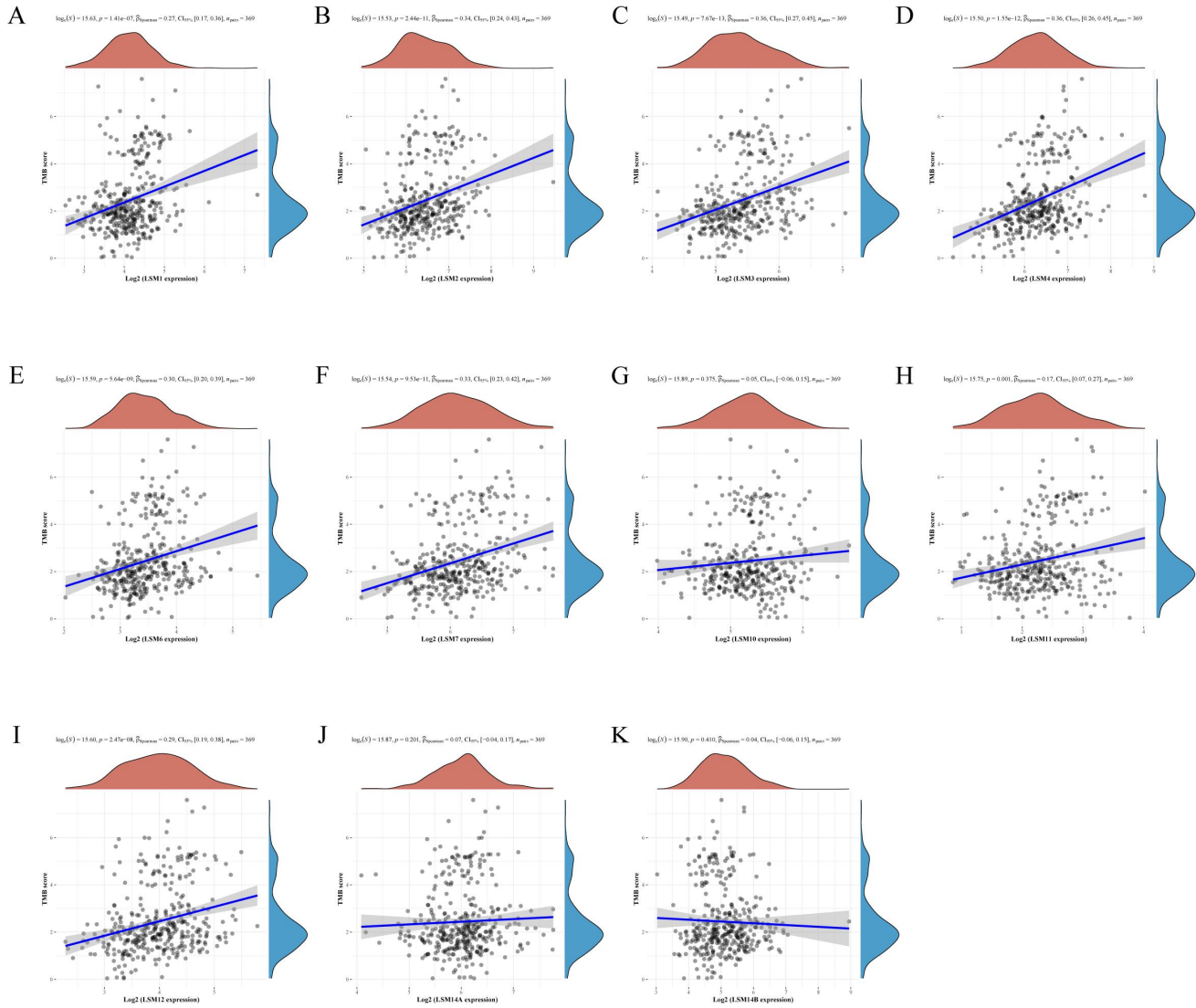
**Supplementary Figure 3.** A. Receiver operating characteristic (ROC) curve for LSM family members expression except LSM5, LSM7 and LSM8 in GC. B. Time-ROC curve for LSM5, LSM7 and LSM8 in GC.

Supplementary Material

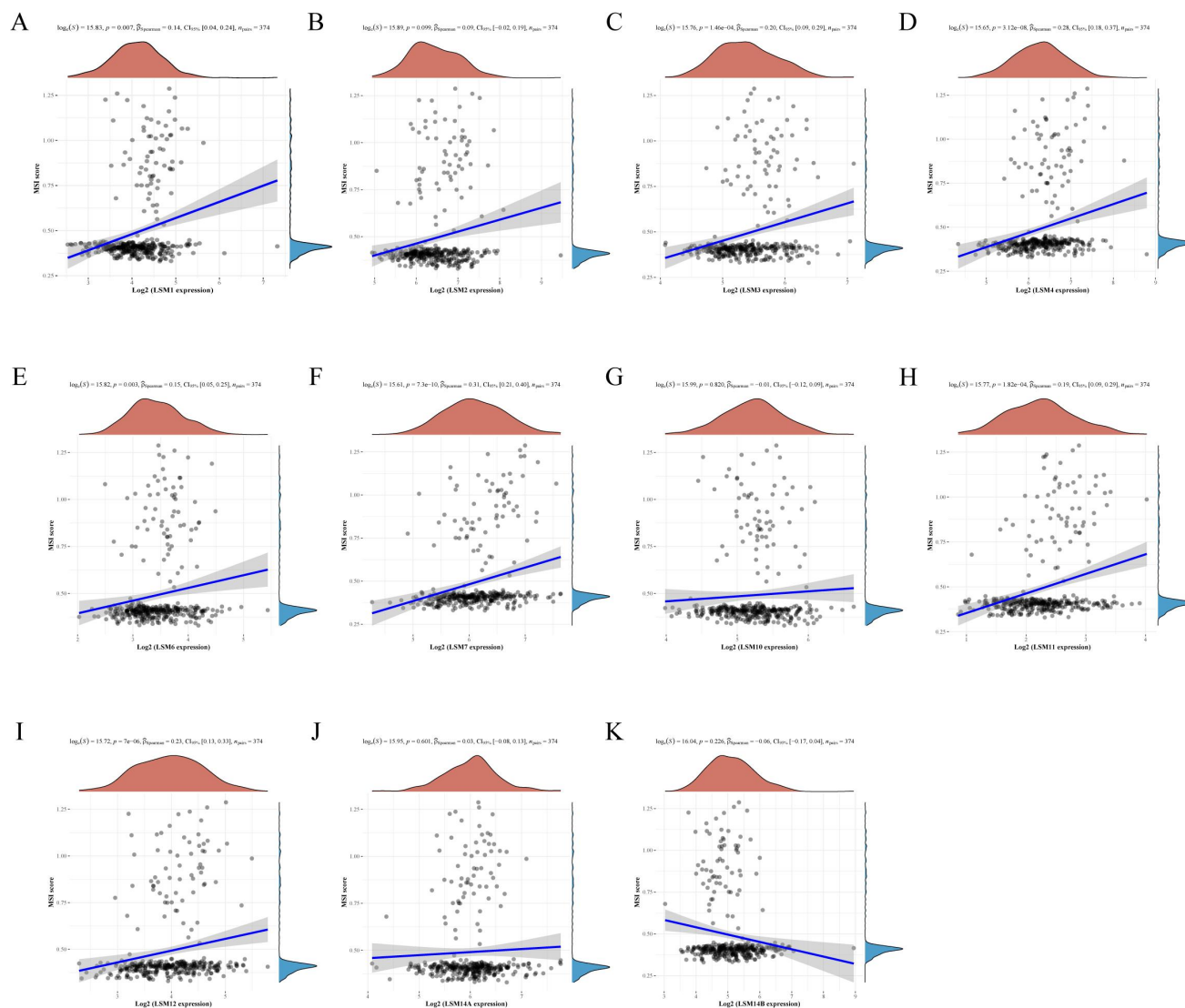




**Supplementary Figure 4.** Immune infiltration levels for LSM family members expression except LSM5 and LSM8 in GC.



**Supplementary Figure 5.** Correlations between the TMB score and the expression of LSM family members expression except LSM5 and LSM8 in GC.



**Supplementary Figure 6.** Correlations between the MSI score and the expression of LSM family members expression except LSM5 and LSM8 in GC.