




Access to paediatric surgery: the geography of inequality in Nigeria

Mohamed Abd salam El Vilaly,¹ Maureen A Jones,¹ Makela Cordero Stankey ², Justina Seyi-Olajide ³, Bisola Onajin-Obembe,⁴ Andat Dasogot,⁵ Stefanie J Klug,⁶ John G Meara,⁷ Emmanuel A Ameh ^{8,9}, Olabisi O Osagie,¹⁰ Sabrina Juran^{6,11}

To cite: El Vilaly MASalam, Jones MA, Stankey MC, *et al*. Access to paediatric surgery: the geography of inequality in Nigeria. *BMJ Global Health* 2021;**6**:e006025. doi:10.1136/bmjgh-2021-006025

Handling editor Seye Abimbola

► Additional supplemental material is published online only. To view, please visit the journal online (<http://dx.doi.org/10.1136/bmjgh-2021-006025>).

Received 18 April 2021
Accepted 30 September 2021

ABSTRACT

Background About 96.3 million children and adolescents aged 0–19 years reside in Nigeria, comprising 54% of the population. Without adequate access to surgery for commonly treatable diseases, many face disability and increased risk of mortality. Due to this population's unique perioperative needs, increasing access to paediatric surgical care requires a situational evaluation of the distribution of paediatric surgeons and anaesthesiologists. This study's aim is to identify the percentage of Nigerian youth who reside within 2 hours of paediatric surgical care at the state and national level.

Methods The Association of Paediatric Surgeons of Nigeria and the Nigeria Society of Anaesthetists provided surgical and anaesthesia workforce data by state. Health facilities with paediatric surgeons were converted to point locations and integrated with ancillary geospatial layers and population estimates from 2016 and 2017. Catchment areas of 2 hours of travel time around a facility were deployed as the benchmark indicator to establish timely access.

Results Across Nigeria's 36 states and Federal Capital Territory, the percentage of Nigeria's 0–19 population residing within 2 hours of a health facility with a paediatric surgical and anaesthesia workforce ranges from less than 2% to 22.7%–30.5%. In 3 states, only 2.1%–4.8% of the population can access a facility within 2 hours, 12 have 4.9%–13.8%, and 8 have 13.9%–22.6%.

Conclusion There is significant variation across Nigerian states regarding access to surgical care, with 69.5%–98% of Nigeria's 0–19 population lacking access. Developing paediatric surgical services in underserved Nigerian states and investing in the training of paediatric surgical and anaesthesia workforce for those states are key components in improving the health of Nigeria's 0–19 population and reducing Nigeria's burden of surgical disease, in line with Nigeria's National Surgical, Obstetrics, Anaesthesia and Nursing Plan.

INTRODUCTION

Surgical care is an indivisible, indispensable part of healthcare, with an estimated one-third of the total global burden of disease attributed to surgically treatable diseases.¹ The significant portion of surgically treatable

WHAT IS ALREADY KNOWN?

- ⇒ Despite an estimated one-third of the global burden of disease being surgical, limited estimates of accessibility to surgical treatment, especially in sub-Saharan Africa, exist; as such, geographical access remains spatially undefined.
- ⇒ In a robust healthcare system, at least 80% of a country's population should be able to access a district hospital that provides surgical care within 2 hours; the objective was to identify the proportion of the population living within 2 hours of a district hospital with surgical capacity in South Africa.

WHAT ARE THE NEW FINDINGS?

- ⇒ Geographical metrics of access to major hospitals across Nigeria's 36 states and Federal Capital Territory were estimated based on travel time.
- ⇒ Estimates were then used to assess need for surgery at subnational level.
- ⇒ Findings suggest that from less than 2% to 22.7%–30.5% of Nigeria's youth population resides within 2 hours of a health facility with a paediatric surgical and anaesthesia workforce.

WHAT DO THE NEW FINDINGS IMPLY?

- ⇒ This national study provides an assessment of accessibility to surgical care for Nigeria's young population.

diseases in the overall global health burden places immense scrutiny on global access to surgical care. Globally, approximately 5 billion people lack timely access to safe and affordable surgical care when needed.^{2 3} Of those, approximately 1.7 billion are children and adolescents and 453 million are children under 5 years of age.^{1 4} Yet, globally, low/middle-income countries (LMICs) account for only 6% of the world's annual surgical procedures.⁵ Furthermore, according to the Lancet Commission on Global Surgery (LCoGS) criteria, less than 3% of the paediatric population in low-income countries and less than 8% of the paediatric population in



© Author(s) (or their employer(s)) 2021. Re-use permitted under CC BY-NC. No commercial re-use. See rights and permissions. Published by BMJ.

For numbered affiliations see end of article.

Correspondence to

Dr Sabrina Juran;
sabrana_juran@hms.harvard.edu

lower middle-income countries have access to surgical care.²³

The lack of access for more than two-thirds of the world's population will make achieving the 2030 Agenda's Sustainable Development Goals (SDGs) exceptionally difficult. Improvements in surgical access, especially in LMICs, where health systems are frequently resource constrained, will require complex, coordinated, and evidence-based policies and initiatives. A large scale-up of child healthcare, including paediatric surgical services, is critical for improving overall healthcare access and achieving the SDGs.

In sub-Saharan Africa, the burden of surgical disease is estimated between 257.8 and 294.7 million people. The burden of surgical disease is estimated between 115.3 million and 131.8 million in children under 15 years of age.^{4 6} Almost 85% of children in LMICs will have a surgically treatable condition by the age of 15 years.^{1 6 7} Without requisite surgery, many children will face lifelong disability and increased mortality. Paediatric surgery has unique requirements distinct from adult surgical care, and includes particular anaesthetic, perioperative, and postoperative needs.

To efficiently and effectively scale up services, policies and initiatives must be evidence based, identifying vulnerable populations and current healthcare gaps, and ensuring that any mitigating efforts or allocation of resources are implemented where they will have the greatest impact. The supporting evidence can be derived from the recommended framework of metrics developed by the LCoGS. The framework has six core indicators that can be used to measure universal access to safe, affordable surgical care, when needed. These indicators include timely access to essential surgery, specialist surgical workforce density, surgical volume, perioperative mortality rate, protection against impoverishing expenditure and protection against catastrophic expenditure.⁸

This research focuses specifically on timely access to paediatric surgery. The LCoGS defines access to timely essential surgery as the proportion of the population that can access, within 2 hours, a facility that can perform the three Bellwether procedures of caesarean delivery, laparotomy and treatment of open fracture.² Access within 2 hours is a temporal threshold as most complications from childbirth must be addressed within this time frame.⁸ Using the 2-hour threshold, it becomes critical to conduct health catchment area mapping that spatially defines travel times to a qualifying healthcare facility to become essential to assessing access. However, comprehensive accessibility analyses that aim to truly define access must also account for numerous other dimensions, including, but not limited to cultural, quality and financial dimensions.¹ Previous models based on spatially defined travel times estimated that 92.5% of the population located in sub-Saharan Africa resided within 2 hours of a major hospital catchment area. These estimates resulted in a regional burden of surgical disease between 257.8 million and 294.7 million people, with an

estimated burden of surgical disease in children younger than 15 years of age that was 115.3–131.8 million and a similar spatial distribution when compared with the total population.⁴ This paper will assess and display the spatial access to paediatric surgical care by integrating novel methods, improving the geospatial outputs and depicting an overall more realistic and accurate accessibility analysis.

Nigeria comprises 36 states and its Federal Capital Territory (FCT), Abuja, each with populations, economic profiles and budgets comparable with small countries. Nigeria's overall development is predominantly determined by state-level dynamics rather than by national-level decision-making. The 36 states and the FCT are politically classified into six geopolitical zones, each developed to reflect the unique cultural, historical, ethnic and economic characteristics of the states in that region. Therefore, political analysis was considered to highlight the stark differences in paediatric surgical access across Nigeria's political zones.⁹

The Federal Republic of Nigeria is the world's seventh most populous country. The United Nations World Population Prospects lists Nigeria's 2020 population at 206 140 000 people, with a population growth rate of 2.59% between 2015 and 2020. Current population projections estimate that Nigeria will have 300 million people by 2040 and more than 400 million by 2050.¹⁰ If these projections hold true, Nigeria will become the third most populous country in the world. In terms of urbanisation rates, Nigeria's urban population as a percentage of the total population has continuously increased since 1950, to 52% in 2020. That places Nigeria's urban population in the higher end, compared with the urban population in the subregion (Western Africa 47.7%) and region (Africa 43.5%).¹¹

Proportionally, children and adolescents represent the largest proportion in the Nigerian population. Children between the ages of 0 and 14 years account for 43.5% of the total population. Children and young people under the age of 19 years of age represent 54.1% of Nigeria's population.⁹ Furthermore, Nigeria accounts for 20% of all births on the African continent and 5% of the global total. Based on current projections, by 2050, 1 of every 13 births in the world will occur in Nigeria.¹⁰ In 2018, Nigeria had the second highest burden of death among children under 5 years of age annually (866 deaths per year) in the world, with a medium under-5 mortality rate (U5MR) of 120 deaths per 100 000 live births.¹² U5MR strongly correlates with socioeconomic and geographical characteristics; U5MR decreases as the household wealth index and the mother's education level increases. In Nigeria, both of these rates were highest in rural areas and in the north west geopolitical zone.¹³ Despite the large proportion of children, access to paediatric care, specifically paediatric surgical care, is limited, evidenced by a workforce deficit of 693 for children <15 years in 2015.¹⁴

METHODS

The accessibility analysis drew on five datasets that were integrated to model access to health facilities providing paediatric surgery and anaesthesiology services. The five datasets used in this analysis included (1) number of paediatric surgery and anaesthesiology care providers by location, (2) gridded modelled population estimate data at 100 m, (3) digital elevation model at 30 m, (4) road networks and (5) river networks.

Patient and public involvement

The development of the research question and outcome measures was informed by consultations within the political process of the National Surgical, Obstetrics, Anaesthesia and Nursing Plan for Nigeria (NSOANP)¹⁵ without direct involvement of the patient. No patient survey was conducted nor were inputs received by patients.

As a component of the baseline assessment for the NSOANP, workforce data on paediatric surgery and anaesthesiology care physicians were obtained from the Association of Paediatric Surgeons of Nigeria and Nigeria Society of Anaesthetists. The data were collected from various sources including the published directory of the Nigerian Society of Anaesthetists (2016), data from the Medical and Dental Council of Nigeria (2018–2019), National Postgraduate Medical College of Nigeria (2019–2020) and published data from the West African College of Surgeons (2019–2020), as well as personal communication with heads of anaesthesia departments of all teaching hospitals in Nigeria and personal communication with national presidents of the various professional surgical specialties. The workforce database was used for the NSOANP (2019) and is being updated annually via phone calls. Triangulation between all data sources was used to support credibility. The database that was used for the study contained information on both fully trained paediatric surgeons and trainees across the country as distributed in each state and the FCT. Updated information was obtained from the head of departments of anaesthesiology of all the teaching hospitals in Nigeria. Fully trained specialist anaesthesiologists, as well as the number and location of accredited hospitals for training physician anaesthesiologists in Nigeria, are listed and mapped. The assumption that specialist anaesthesiologists can provide paediatric anaesthesia has been made. The location of qualifying health facilities with at least one paediatric surgeon was converted into a point location.

Bottom-up gridded population estimates¹⁶ for Nigeria were downloaded from the website of the Geo-Referenced Infrastructure and Demographic Data for Development (GRID3) project,¹⁷ including gridded population estimates from 2016 to 2017 at 100 m by 100-metre gridded cells with national coverage for Nigeria, along with disaggregated age and sex estimates. Each gridded raster contains estimates of total population size for each approximately 100-metre gridded cell across Nigeria. The GRID3 Nigeria gridded model population estimates represent the timeliest data of the population's

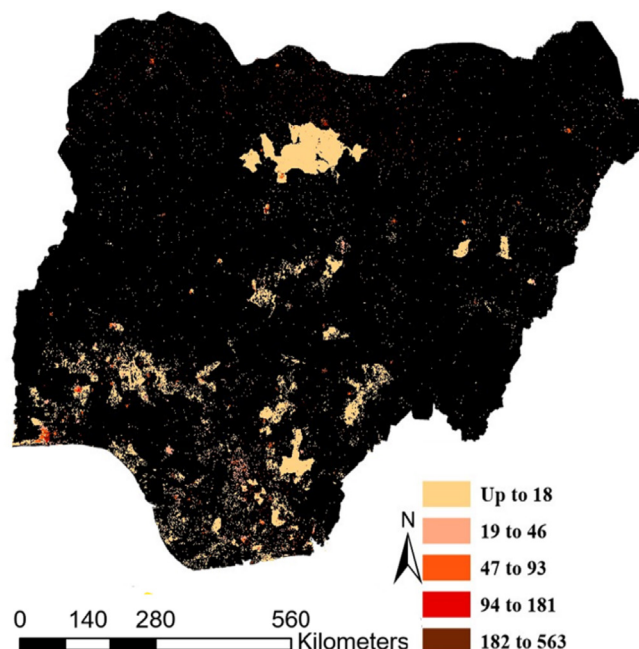


Figure 1 Spatial distribution of total gridded paediatric population (0–19 years of age) density per 100 m².

distribution across the country, at very high resolution. Although population and housing censuses are the most important resource to producing accurate population data at the national and subnational level, the most recent census in Nigeria was conducted in 2006. GRID3 data are used in this analysis to compensate for the lengthy gap in actual data collection since. GRID3's model population methodology is found elsewhere.¹⁸ For this analysis, the population data and all raster layers were assembled at a spatial resolution of 100 by 100 m, a resolution of 3 arc (approximately 100 m at the equator) and the projection fit within the Geographic Coordinate System, WGS84. The gridded population estimates of paediatric age from 0 to 19 years of age and by sex were extracted. The authors followed the guidelines by the Nigerian's Ministry of Health in terms of the paediatric population universe.

Figure 1 demonstrates the density of the paediatric population defined as those 0–19 years of age per 100 m². Density ranges between 0 and 563 persons per 100 m². Urban residential centres correlate with highest paediatric population density. In online supplemental figure 1a–c, the areas in black indicate commercial centres in urban areas or unsettled areas with no paediatric population present. These figures highlight these geographical blind spots across the country, further elucidating the level of urbanisation and settled areas across the national territory.

Topographical information including elevation, land cover and land use at high spatial resolution was used to demarcate Nigeria's topographical characteristics. Using a digital elevation model (DEM) allows for the integration as slope as one of the main topographical factors impacting the speed of human movement across space.

The DEM at 30 m is based on the Advanced Spaceborne Thermal Emission and Reflection Radiometer (ASTER) Global DEM (ASTER Validation Team, 2009).¹⁹

The road network data layer was generated through an extraction of roads from OpenStreetMap,²⁰ 2018 and the United Nations Office for the Coordination of Humanitarian Affairs: The Humanitarian Data Exchange.²¹ This layer includes the most recent georeferenced roads, streets and pathways in Nigeria. For this analysis, the road networks were classified into four main categories based on the road conditions: residential area, primary, secondary and tertiary roads. Further, motorised transport was used in the analysis of travel times along these major roads.

The river network data layers were generated from HydroSHEDS database.²² These data provide hydrographical information in a consistent and comprehensive format for regional and global-scale applications.

The recent availability and use of geospatial data have enabled the sophisticated evaluation of service access. Through the use of geospatial data, one can calculate the shortest time or distance from any location on earth to another. These calculations include combining the distance travelled on different road surfaces with an impedance measure (ie, rivers or geographical faults), which accurately reflects the speed an individual can travel on different qualities of roads and on the slope of the terrain through which the road passes.

To connect every person with the closest paediatric surgeon and anaesthesia provider, this analysis used a series of accessibility indicators. The inclusion of indicators accounts for the notion that accessibility is not a discrete variable (ie, to have or not have access), but a continuum that reflects the difficulties that each individual may encounter when accessing various infrastructure types. For this analysis, access was defined as how feasible it is to physically reach a qualifying facility, considering factors such as distance, type of transportation and time. The main assumption was that individuals are likely to move through highways, major roads or paths when those exist. It was also assumed that in the absence of major roads or paths, an individual would walk to access the nearest facilities. The final objective was to calculate the time a person requires to access the nearest qualifying health facility through the fastest route.

The moving time on the land surface depends on various factors, the most important being the distance. Other critical factors include the existing road network with its specific characteristics, the terrain's slope, and the presence of obstacles or barriers, such as rivers (except for cases in which rivers are used as ways of transport). This study's methodology consisted of three steps: in the first step, the travel time required to reach the nearest facility was calculated; in the second phase, the catchment areas around these facilities were generated; in the third step, the population within each catchment area was extracted.

Travel time calculations using motor vehicles were conducted for four main types of roads, assigning an average speed to each road type. The projected speed for residential areas was 15 km/hour, 45 km/hour for primary roads, 85 km/hour for secondary roads and 100 km/hour for tertiary roads. The road network was then converted to a raster layer at 30-metre cell size.

To estimate human walking speed over cross-country terrain, this study used Tobler's Hiking Function, which has been widely used to model human movement across space.²³ An equation for walking speed based on terrain slope yields walking velocity, W (m/s), approximated by: $V=6 \times e^{-3.5 \times \text{abs}(S+0.05)}$, where V represents walking velocity (km/hour), e means exponential, abs means absolute and S equals the terrain's degree of slope (dh/dx).

Another variable accounted for in this model corresponded to the presence of natural barriers, such as rivers, which could prevent people from travelling in a straight line in the absence of a bridge. Cells corresponding to areas with a river and no bridge were assigned a speed of 3 km/hour.

At present, a standardised definition of geographical accessibility does not exist. Therefore, this study employed a time gradient of up to 30 min, up to 1 hour, up to 2 hours and above 2 hours for the mapping of geographical accessibility.²⁴ This time gradient was based on the frequent use of less or equal to 2 hours of travel time for evaluating timely access to Emergency Obstetrics and Neonatal Care services and less or equal to 1 hour of travel time for evaluating timely access to principal referral centres with cardiac catheterisation services.

The accessibility analysis was developed in a raster format by converting the entire area of analysis into gridded cells, measuring 30 by 30 m, based on the DEMs. Each cell was assigned a friction value based on characteristics of slope, roads and natural barriers. The friction grid was then integrated into the model to run the cost-weighted distance algorithm over the raster surface. The cost-weighted distance algorithm calculated the accumulated time it takes to arrive at each qualifying health facility depending on departure location, replacing overlapping values with the most efficient route. In the second step, catchment areas were generated from the cost-distance grid, which contained the minimal total cost to travel from each health facility location(s) to any cell. Contour techniques were used to generate catchment areas of 0–30 min, 0–60 min, 0–120 min and above 120 min around each health facility providing paediatric surgery and anaesthesiology services. Finally, the target population was extracted by catchment areas, age, and sex to calculate the population's geographical access to paediatric surgery and anaesthesiology health workforce and services.

RESULTS

The results depict inequality in access to surgical care that is currently affecting Nigeria's child and adolescent

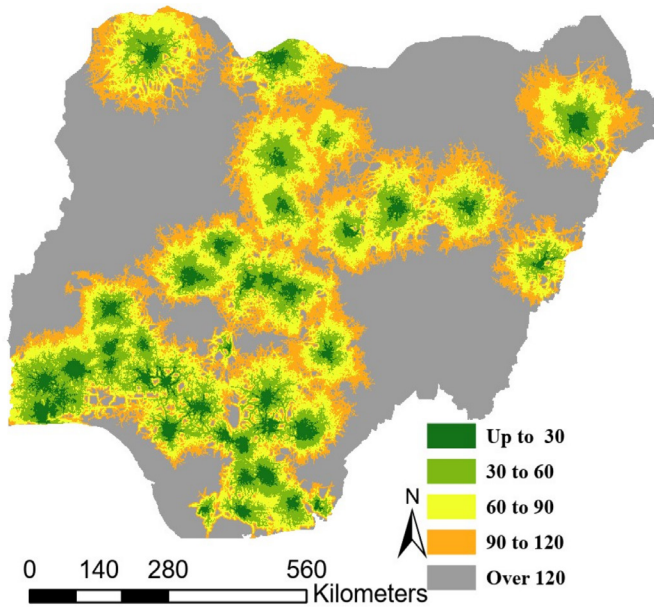


Figure 2 Travel time to a health facility with a paediatric surgeon in 30, 60, 90, 120 and over 120 min increments of travel time.

population. Overall location of health centres aligns with urbanised locations, with most health centre locations correlated with major population centres, such as Lagos in Lagos state, Kano in Kano state, Ibadan in Oyo state, Benin City in Edo state, Port Harcourt in Rivers state, Jos in Plateau state, Ilorin in Kwara state and Abuja in the FCT (figure 2). Forty-eight per cent of the total population resides in rural areas and was over the 120-minute travel time indicator, as a result of the disproportionate urban clustering of qualifying health facilities.

Nigeria's population aged 0–19 years of age is estimated to total 96.3 million young people, comprising 47.2 million girls and 49.1 million boys. Table 1 illustrates the total female and male population 0–19 years of age within 2 hours of a health facility with a paediatric surgeon on staff, disaggregated by major age groups. Only 12.9% of this population resides within 2 hours to a facility with a paediatric surgeon. Among the age groups, lack of access is fairly evenly distributed, with ages 15–19 years experiencing the least access at only 11.7%. The lack of timely access to paediatric care for 87.1% of Nigeria's young population contributes to the experienced high burden of surgical disease among this age group.

Online supplemental table 1 displays the female population 0–19 years of age who reside within a 2-hour catchment area to a health facility with a paediatric surgeon on staff compared with the total number of children in the area, categorised by major age groups and states. The total percentage of the paediatric population within a 2-hour access catchment per each age category ranges from 11.76% and 13.75% and is fairly consistent across age categories per state. However, there is significant variance in per cent of access among states, ranging between

Table 1 Female and male population 0–19 years of age within 2 hours of a health facility with a paediatric surgeon on staff, disaggregated by major age groups

Age (years)	Female population				Male population				Total female and male population			
	Total female population		Percentage of female population within 2-hour access by age group		Total male population		Percentage of male population within 2-hour access by age group		Total population		Percentage of population 0–19 years within 2-hour access by age group	
	population	access by age group	population	access by age group	population	access by age group	population	access by age group	population	access by age group	population	access by age group
<1	3 035 542	417 811	13.8	3 184 878	442 696	13.9	6 220 420	860 507	13.8			
1–4	11 378 533	1 566 137	13.8	11 909 583	1 655 426	13.9	23 288 116	3 221 562	13.8			
5–9	12 384 236	1 639 371	13.2	12 912 180	1 729 939	13.4	25 296 415	3 369 309	13.3			
10–14	11 000 246	1 303 232	11.8	11 445 808	1 409 446	12.3	22 446 053	2 712 678	12.1			
15–19	9 371 431	1 102 354	11.8	9 688 905	1 136 621	11.7	19 060 336	2 238 976	11.7			
0–19	47 169 987	6 028 905	12.8	49 141 353	6 374 128	13.0	96 311 341	12 403 033	12.9			

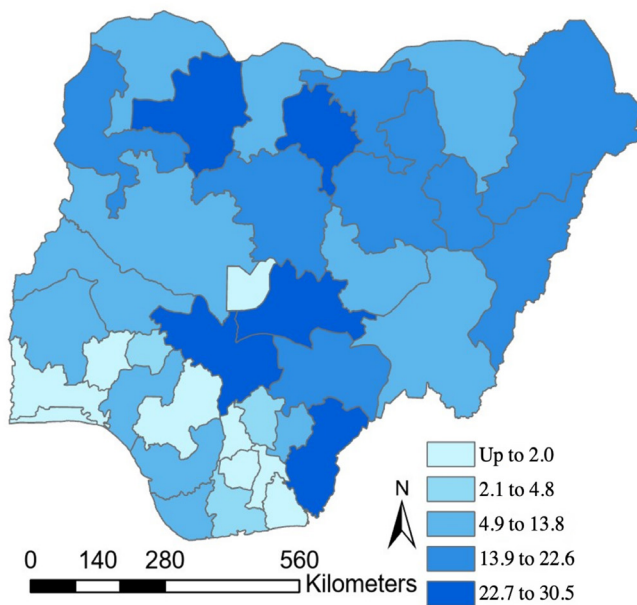


Figure 3 Percentage of population 0–19 within 2 hours of travel time to a health facility with a paediatric surgeon by state.

0.15% (FCT, ages 1–4 and 10–14) and 32.23% (Kano, ages 15–19).

Online supplemental table 2 displays the male population 0–19 years of age who reside within a 2-hour catchment area to a health facility with a paediatric surgeon on staff, categorised by major age groups and state. Similarly, the total percentage of the paediatric population with access to a paediatric surgeon across age categories remains within 3 percentage points, ranging from 11.73% (ages 15–19) to 13.90% (ages 1–4 and <1), and there is significant variance in percentage accessibility across states ranging between 0.15% (FCT, ages <1 and 1–4) and 31.41% (Zamfara, ages <1 and 1–4). At the state level, as displayed in figure 3 and online supplemental tables 1 and 2, Zamfara and Kano states have the highest percentage of their youth population, regardless of sex, within 2 hours of travel time to a facility with at least one paediatric surgeon (approximately 30% and 30%, respectively). However, in Zamfara state, this timely access is a result of the proximity of a facility with a paediatric surgical care provider located within the neighbouring federal state. Zamfara state does not have any qualifying facility located within its state borders. Imo and Osun states have the smallest crude number of population within 2 hours of travel time to a paediatric surgeon (<1% and <1%, respectively).

This study found that in nine states, less than 2% of the target population resides within 2 hours of a health facility with a paediatric surgeon. In three states, between 2.1% and 4.8% of the target population resides within 2 hours of a qualifying facility. A total of 4.9%–13.8% of the population in 11 states resides within 2 hours of a travel time to a qualifying facility. In eight states, 13.9%–22.6% of the population resided within 2 hours and five states

22.7%–30.5% of the target population resided within 2 hours of travel time to a qualifying facility. Although states such as Zamfara do not have a facility with a paediatric surgeon within the state's borders, this study found that there was still greater access than some states with facilities that have a paediatric surgeon due to the proximity of the facilities in nearby states to Zamfara's borders. Total paediatric surgery workforce includes both fully trained paediatric surgeons and paediatric surgeon trainees as shown in table 2. The 'Number of paediatric surgeons only' column indicates calculations based on only fully trained paediatric surgeons. The total number of paediatric surgeons present in a given state ranges between 0 (Tarabe, Yobe, Zamfara) and 19 (Lagos), with ratios per 100 000 population ranging from 0 to 0.71 (FCT). For the 'Paediatric surgeons only' calculations, values tend to be lower across the board as trainees are excluded. Urban states (FCT, Lagos, Edo) with teaching facilities tended to have higher ratios compared with those more rural states. Some values were not calculated due to lack of availability of paediatric surgeons. Table 2 also displays the ratio of physician anaesthesia specialists to Nigeria's population between 0 and 19 years of age. Total number of anaesthesiology providers includes the reported number of consultant anaesthesiologists and trainees in a given state. The 'Number of consultant anaesthesiologists only' column indicates calculations based on only fully trained physician anaesthesiologists. The total number of physician anaesthesia specialists in Nigeria ranges from 0 in Yobe state to 168 in Lagos, with ratios per 100 000 of the paediatric population, aged 0–19 years, ranging from 0 to 4.09 (Lagos). Similar to the 'Paediatric surgeons only' column, the 'Consultant anaesthesiologists only' values tend to be lower given the exclusion of trainees in the calculations. As found in table 2, urban states (FCT, Lagos, Edo) with teaching facilities tended to have higher ratios compared with more rural states. Some ratios were not calculated due to lack of availability of the anaesthesia workforce in a given state.

DISCUSSION

Using reported provider availability along with facility location, we estimate the Nigerian youth population's physical access to surgical and anaesthesia care and evaluate the presence of Nigeria's paediatric surgery workforce at the national and state level. Nationally, our study concluded that 12.9% of the youth population between 0 and 19 years of age resides within 2-hour travel time to a facility with an available paediatric surgeon. We demonstrate significant variance in access at the state level, with the percentage of the youth population residing within 2-hour travel time to a facility with an available paediatric surgeon ranging from 0% to 30%. These values fall well below the LCoGS recommended target of 80%.² We demonstrate significant inequality in distribution of healthcare workforce that favours more urban centres, which is consistent with previous studies.¹⁶ At the

Table 2 Paediatric surgical and anaesthesia workforce

	Ratio of population 0-19												
	Population 0-19 years	Number of paediatric surgeon+trainees	Density per 100 000 population	Ratio of paediatric surgery workforce	Number of paediatric surgeons only	Density per 100 000 population	Ratio of paediatric surgeon	Number of consultant anaesthesiologists+trainees	Density per 100 000 population	Ratio of population 0-19 per anaesthesiologist			
North central zone													
Benue state	2 568 269	2	0.08	1 284 135	1	0.04	2 568 269	8	0.31	321 034	1	0.04	2 568 269
Kogi state	1 629 203	4	0.25	407 301	2	0.12	814 602	12	0.74	135 767	3	0.18	543 068
Kwara state	1 417 597	7	0.49	202 514	6	0.42	236 266	16	1.13	88 600	6	0.42	236 266
Nasarawa state	2 195 044	1	0.05	2 195 044	1	0.05	2 195 044	2	0.09	1 097 522	1	0.05	2 195 044
Niger state	3 297 304	3	0.09	1 099 101	3	0.09	1 099 101	4	0.12	824 326	2	0.06	1 648 652
Plateau state	2 040 703	7	0.34	291 529	4	0.20	510 176	21	1.03	97 176	8	0.39	255 088
FCT	1 818 826	13	0.71	13 987	8	0.44	227 353	48	2.64	37 892	18	0.99	101 046
Total	14 966 946	37	0.25	404 512	25	0.17	598 678	111	0.74	134 837	39	0.26	383 768
North eastern zone													
Adamawa state	2 006 943	2	0.10	1 003 471	1	0.05	2 006 943	4	0.20	501 736	1	0.05	2 006 943
Bauchi state	3 613 768	1	0.03	3 613 768	1	0.03	3 613 768	3	0.08	1 204 589	0	0.00	-
Borno state	3 158 829	1	0.03	3 158 829	1	0.03	3 158 829	9	0.28	350 981	1	0.03	3 158 829
Gombe state	1 751 536	3	0.17	583 845	2	0.11	875 768	15	0.86	116 769	1	0.06	1 751 536
Taraba state	2 449 608	0	0.00	-	0	0.00	-	1	0.04	2 449 608	0	0.00	-
Yobe state	1 955 861	0	0.00	-	0	0.00	-	0	0.00	-	0	0.00	-
Total	14 936 545	7	0.05	2 133 792	5	0.03	2 987 309	32	0.21	466 767	3	0.02	4 978 848
North western zone													
Jigawa state	3 290 547	0	0.00	-	0	0.00	-	2	0.06	1 645 273	0	0.00	-
Kaduna state	4 936 304	8	0.16	617 038	4	0.08	1 234 076	26	0.53	189 858	6	0.12	822 717
Kano state	8 046 004	5	0.06	1 609 201	4	0.05	2 011 501	28	0.35	287 357	9	0.11	894 000
Katsina state	5 043 144	1	0.02	5 043 144	1	0.02	5 043 144	2	0.04	2 521 572	0	0.00	-
Kebbi state	2 365 180	1	0.04	2 365 180	0	0.00	-	3	0.13	788 393	1	0.04	2 365 180
Sokoto state	2 970 138	5	0.17	594 028	2	0.07	1 485 069	13	0.44	228 472	1	0.03	2 970 138
Zamfara state	1 998 172	0	0.00	-	0	0.00	-	2	0.10	999 086	1	0.05	1 998 172
Total	28 649 489	20	0.07	1 432 474	11	0.04	2 604 499	76	0.27	376 967	18	0.06	1 591 638

Continued

Table 2 Continued

	Population 0-19 years	Number of paediatric surgeon+trainees	Density per 100 000 population	Ratio of population 0-19 per total paediatric surgery workforce	Number of paediatric surgeons only	Density per 100 000 population	Ratio of population 0-19 per paediatric surgeon	Number of consultants+trainees anaesthesiologists+trainees	Density per 100 000 population	Ratio of population 0-19 per total anaesthesiology workforce	Number of consultant anaesthesiologists only	Density per 100 000 population	Ratio of population 0-19 per anaesthesiologist
South eastern zone													
Abia state	1 979 777	2	0.10	989 889	1	0.05	1 979 777	16	0.81	123 736	6	0.30	329 963
Anambra state	2 033 725	4	0.20	508 431	4	0.20	508 431	11	0.54	184 884	3	0.15	677 908
Ebonyi state	1 466 450	8	0.55	183 306	3	0.20	488 817	23	1.57	63 759	1	0.07	1 466 450
Enugu state	1 362 127	8	0.59	170 266	6	0.44	227 021	54	3.96	25 225	16	1.17	85 133
Imo state	3 448 154	5	0.12	862 039	2	0.06	1 724 077	24	0.70	143 673	5	0.15	689 631
Total	10 290 233	27	0.26	381 120	16	0.16	643 140	128	1.24	80 392	31	0.30	331 943
South-south zone													
Akwa Ibom state	1 715 894	3	0.17	571 965	2	0.12	857 947	17	0.99	100 935	6	0.35	285 982
Bayelsa state	549 642	2	0.36	274 821	1	0.18	549 642	8	1.46	68 705	3	0.55	183 214
Cross River state	1 511 419	4	0.26	377 855	3	0.20	503 806	33	2.18	45 801	9	0.60	167 935
Rivers state	2 512 717	7	0.12	837 572	3	0.12	837 572	67	2.67	37 503	20	0.80	125 636
Delta state	1 808 456	3	0.61	164 405	2	0.11	904 228	30	1.66	60 282	9	0.50	200 940
Edo state	1 936 864	11	0.36	276 695	6	0.31	322 811	57	2.94	33 980	15	0.77	129 124
Total	10 034 992	30	0.30	334 500	17	0.17	590 294	212	2.11	47 335	62	0.62	161 855
South western zone													
Ekiti state	1 034 390	5	0.48	206 878	2	0.19	517 195	2	0.19	517 195	1	0.10	1 034 390
Lagos state	4 112 459	19	0.32	316 343	17	0.41	241 909	168	4.09	24 479	25	0.61	164 498
Ogun state	4 545 251	8	0.18	568 156	6	0.13	757 542	21	0.46	216 441	9	0.20	505 028
Ondo state	2 024 810	3	0.15	674 937	2	0.10	1 012 405	4	0.20	506 202	2	0.10	1 012 405
Osun state	2 352 199	9	0.38	261 355	6	0.26	392 033	28	1.19	84 007	9	0.38	261 355
Oyo state	3 364 026	4	0.15	672 805	3	0.09	1 121 342	37	1.10	90 920	14	0.42	240 288
Total	17 433 135	48	0.28	363 190	36	0.21	484 254	260	1.49	67 051	60	0.34	290 552
FCT, Federal Capital Territory.													

national level, we determined the overall ratio of paediatric surgeons and trainees per 100 000 youth of 0–19 years is less than 0.01. There is evidence that 0.4 paediatric surgeons per 100 000 children under 15 years of age is correlated with significant improvements in survival.²⁵ The ratio of anaesthesiology specialists and trainees (less than 0.01 per 100 000) falls below the World Federation Society of Anaesthesiologists recommendation of an interim goal of 5 physician anaesthesia specialists per 100 000 population.²⁶ It is important to note that the anaesthesiology specialist ratio is likely an overestimation, as the ratio was calculated for Nigeria's paediatric population and not the entire population of Nigeria, and the anaesthesiologists provide anaesthesiology services to both adults and young people. These findings add additional value to an earlier report⁴ that initially used facility location to determine geographical accessibility in sub-Saharan Africa.

Previous national estimates obscure subnational inequalities and vulnerabilities, and do not allow for adequate planning and investment, especially in a decentralised federal republic where states share resources at their geopolitical level. There is evidence that a higher absolute number of paediatricians in Nigeria's political zones is associated with a lower under U5MR and accounted for 84% of the variability among zones.¹⁴ For this reason, the significant variation of surgeon:youth (0–19 years population) and anaesthesiologist:youth (0–19 years population) ratios among states and political zones that we illustrated in this study is important to consider when allocating resources at the political zone level. It is important to recognise that human factors also impact how the workforce is allocated and retained in areas of need in Nigeria, such as lack of financial incentives, adverse living conditions and excessive workloads. These must be addressed in conjunction with increased workforce to improve appropriate distribution of human resources and retention. As confirmed in this study, Nigerian physicians tend to work in urban or semiurban areas for several reasons, notably due to proximity of family, proximity to their hometowns which are typically urban or semiurban, and facility availability, which may have influenced the workforce distribution we have determined via this study.²⁷ Without improving this access, the burden of unmet surgical need in this age group would not be addressed and achieving universal health coverage and health targets of SDGs would be unlikely.

There is a further need to invest in data collection on individual barriers to care. Interventions to overcome these barriers of access to safe surgery could help to reduce negative outcomes of delayed or lack of access, such as increased morbidity and mortality rates.²⁷ The lack of timely access to paediatric care for 87% of Nigeria's target population contributes to the experienced high burden of surgical disease among Nigeria's children. Increasing the percentage of the population who resides within 2 hours of travel time to a paediatric surgeon will be critical to improving the overall health

of the Nigerian population and deliver upon Nigeria's NSOANP. The large access gaps found must be addressed in order to decrease the prevalence of life-long disabilities and increased mortality rates that arise from the lack of care for surgically treatable diseases.

The Optimal Resources for Children's Surgical Care (ORECS) created by the Global Initiative for Children's Surgery (<https://www.globalchildrensurgery.org/optimal-resources/>) has provided a roadmap to facilitate the provision of children's surgical care particularly at district and first level hospitals.²⁸ Nigeria has leveraged ORECS to incorporate children's surgical care into NSOANPs to begin to address the poor access to surgical care for children. This plan provides for the delivery of basic emergency and essential children's surgical care at district and first level hospitals, where there are no paediatric surgeons and specialist anaesthesiologists. Increasing the percentage of the population who resides within 2 hours to a paediatric surgeon will be critical to improving the overall health of the Nigerian population and deliver upon Nigeria's NSOANP. Implementation of the NSOANP has just begun and it is envisaged that it would, to some extent, improve access to this age group.

There are limitations to this study. The definition of access in this study is focused on geography and may not reflect the lived reality. Our analysis assumed that individuals are likely to move through highways, major roads or paths when those exist, and that in the absence of major roads or paths, an individual would walk to access the nearest facility. Catchment areas were developed on the assumption of motorised vehicle access and did not account for other common transportation modes, such as public transport. It is well established that access is a multidimensional construct and includes measures of geography, political, ethnic and cultural issues, timeliness, health service capacity, organisation and coordination, quality, safety, affordability and more. These dimensions are particularly important to consider in young people, who may not have the means or agency to access care on their own.

The assumptions made to determine geospatial access for the youth population are important to reiterate as limitations to this study. We assume that paediatric surgical care can only be provided by paediatric surgeons, and that anaesthesiologists can provide paediatric anaesthesia care. We also assumed that teenagers up to 19 years of age require a paediatric surgeon for their care. We used the 2-hour benchmark within which to receive emergency care per the LCoGS guidelines, under the assumption that time to emergency care is similar for adult and paediatric surgical conditions. The term 'paediatric surgeons' used throughout this manuscript was used synonymously with 'paediatric general surgeons' and there are likely other surgical specialists involved in the surgical care of children not included in this study.

A significant limitation to this study that we acknowledge is that considering only workforce data in this

analysis. This does not necessarily indicate the true workforce availability in the facilities. For example, for this research, the assumption was made that a single paediatric surgeon in Nasarawa state is available to perform surgery at all times. We recognise that true availability of surgery in these facilities requires not just workforce, but consumables, infrastructure and more. New facility data or an in-depth facility assessment is needed to further define the needs for infrastructure, personnel, and medicine supply to achieve timely and safe, affordable surgery.

Despite these limitations, we argue that these results are an important step in determining true access: these other factors likely further limit the availability of surgical care for paediatric populations, additionally emphasising the urgency in addressing this issue.

Despite Nigeria's human and natural resources and strategic position on the continent, the country's health system lacks sufficient capacity. The inadequacies in health personnel are one component to this lack of capacity and are even more apparent in rural areas, as is demonstrated in our study. Notably, the Nigerian government has implemented numerous initiatives to address and reform some of these inadequacies, including improving staff quality, reductions in waiting time, increased provision of more affordable drugs, infrastructure investment, including the building of additional facilities, and improving the environment of facilities; however, great disparities persist.²⁵

CONCLUSIONS

Assessing and geographically mapping an individual's travel time from their usual residence to a healthcare facility that provides paediatric surgery and anaesthesiology services is a critical component to identifying gaps in the provision of surgical care. With geospatial analyses such as these, governments and development partners can begin to formulate effective, targeted policies and programmes with the greatest impact on reducing service area gaps.

With Nigeria's growing paediatric population, Nigeria must accelerate the relevant and appropriate development of its paediatric surgical and anaesthesia workforce and surgical system overall to meet their population's growing surgical needs. Additionally, there is a need to develop a scheme to safeguard national investments spearheaded by the NSOANP, which has previously not been done by measures suggested herein. This analytical effort provides updated evidence to support the implementation of Nigeria's current NSOANP. Mapping of health access at the subnational level should be integrated into policy formulation, as well as for the monitoring of investments and programmes.

Author affiliations

¹Technical Division, Population and Development Branch, United Nations Population Fund, New York, New York, USA

²Department of Global Health and Social Medicine, Harvard Medical School, Boston, Massachusetts, USA

³Lagos University Teaching Hospital, Lagos, Nigeria

⁴Department of Anaesthesiology, Faculty of Clinical Sciences, College of Health Sciences, University of Port Harcourt, Port Harcourt, Nigeria

⁵Nigeria Country Office, United Nations Fund for Population Activities, Abuja, Nigeria

⁶Epidemiology, Department of Sport and Health Sciences, Technical University of Munich, Germany and Munich Data Science Institute (MDSI), Technical University of Munich, Germany, Munich, Germany

⁷Plastic and Oral Surgery, Boston Children's Hospital, Boston, Massachusetts, USA

⁸National Hospital, Abuja, Nigeria

⁹Division of Paediatric Surgery, National Hospital, Abuja, Nigeria

¹⁰Department of Surgery, University of Abuja Teaching Hospital, Gwagwalada, Abuja, Nigeria

¹¹Program in Global Surgery and Social Change, Harvard Medical School, Boston, Massachusetts, USA

Twitter Makela Cordero Stankey @MakelaStankey, John G Meara @JohnMeara and Sabrina Juran @sabinajuran

Contributors SJ and MAsEV conceived the original idea and were in charge of overall direction and planning. SJ supervised the project. JM and SJK helped supervise the project. MAsEV led the design of the model. Local knowledge to the model was by EA and AD. MAsEV created the computational framework. SJ, MAJ and MCS analysed the data with support by MAsEV, SJ and MCS. MAJ wrote the manuscript with support from EA, JS-O, BO-O, AD, EAA and OOO. SJ serves as guarantor for the overall content.

Funding The authors have not declared a specific grant for this research from any funding agency in the public, commercial or not-for-profit sectors.

Competing interests None declared.

Patient consent for publication Not required.

Provenance and peer review Not commissioned; externally peer reviewed.

Data availability statement Data are available in a public, open access repository. All data relevant to the study are included in the article or uploaded as supplemental information. All population estimates and the ancillary spatial datasets and are available online.

Supplemental material This content has been supplied by the author(s). It has not been vetted by BMJ Publishing Group Limited (BMJ) and may not have been peer-reviewed. Any opinions or recommendations discussed are solely those of the author(s) and are not endorsed by BMJ. BMJ disclaims all liability and responsibility arising from any reliance placed on the content. Where the content includes any translated material, BMJ does not warrant the accuracy and reliability of the translations (including but not limited to local regulations, clinical guidelines, terminology, drug names and drug dosages), and is not responsible for any error and/or omissions arising from translation and adaptation or otherwise.

Open access This is an open access article distributed in accordance with the Creative Commons Attribution Non Commercial (CC BY-NC 4.0) license, which permits others to distribute, remix, adapt, build upon this work non-commercially, and license their derivative works on different terms, provided the original work is properly cited, appropriate credit is given, any changes made indicated, and the use is non-commercial. See: <http://creativecommons.org/licenses/by-nc/4.0/>.

ORCID iDs

Makela Cordero Stankey <http://orcid.org/0000-0002-9140-366X>

Justina Seyi-Olajide <http://orcid.org/0000-0003-4481-8528>

Emmanuel A Ameh <http://orcid.org/0000-0003-2386-3039>

REFERENCES

- Butler EK, Tran TM, Nagarajan N, *et al*. Epidemiology of paediatric surgical needs in low-income countries. *PLoS One* 2017;12:e0170968.
- Meara JG, Leather AJM, Hagander L, *et al*. Global surgery 2030: evidence and solutions for achieving health, welfare, and economic development. *The Lancet* 2015;386:569–624.
- Bickler SW, Rode H. Surgical services for children in developing countries. *Bull World Health Organ* 2002;80:829–35.
- Juran S, Broer PN, Klug SJ, *et al*. Geospatial mapping of access to timely essential surgery in sub-Saharan Africa. *BMJ Glob Health* 2018;3:e000875.
- Butler EK, Tran TM, Nagarajan N, *et al*. Epidemiology of paediatric surgical needs in low-income countries. *PLoS One* . 2017;12:e0170968.

- 6 Butler EK, Tran TM, Fuller AT, *et al.* Quantifying the pediatric surgical need in Uganda: results of a nationwide cross-sectional, household survey. *Pediatr Surg Int* 2016;32:1075–85.
- 7 Ozgediz D, Poenaru D. The burden of pediatric surgical conditions in low and middle income countries: a call to action. *J Pediatr Surg* 2012;47:2305–11.
- 8 Lancet Commission Indicator Round 1. Available: https://b6cf2cfd-eb09-4859-92a9-a8f002c3bcef.filesusr.com/ugd/346076_a3361c77f2b24e64bb0cf76eaf9cd61d.pdf
- 9 Eze TC, Okpala CS, Sunday C. Patterns of Inequality in Human Development Across Nigeria's Six Geopolitical Zones. *Developing Country Studies* www.iiste.org 2014 www.iiste.org
- 10 United Nations, Department of Economic and Social Affairs, Population Division. *World population prospects. The 2018 revision, online edition, 2018.* Available: <https://population.un.org/wpp/DataQuery/>
- 11 United Nations, Department of Economic and Social Affairs, Population Division. *World urbanization prospects: the 2018 revision, 2018.*
- 12 UNICEF. *The State of the World's Children 2019. Children, Food and Nutrition: Growing well in a changing world.* New York: UNICEF, 2019. <https://www.unicef.org/sites/default/files/2019-12/SOWC-2019.pdf>
- 13 Ekure EN, Esezobor CI, Balogun MR, *et al.* Paediatrician workforce in Nigeria and impact on child health. *Niger J Paediatr* 2013;40:112–8.
- 14 Seyi-Olajide JO, Ameh EA. Investing in pediatric surgical research to advance universal health coverage for children in Nigeria. *Niger J Surg* 2020;26:1–8.
- 15 Nigeria Federal Ministry of Health. National Surgical, Obstetrics, Anaesthesia & Nursing Plan (NSOANP) for Nigeria Strategic Priorities for Surgical Care (StraPS) Planning for a Future of Surgical Equity, Safety & Progress 2019.
- 16 WorldPop. Bottom-Up gridded population estimates for individual age-sex groups in Nigeria, version 1.2.1. WorldPop, University of Southampton 2020.
- 17 Geo-Referenced infrastructure and demographic data for development. Available: <https://grid3.gov.ng/datasets> [Accessed 28 Feb 2021].
- 18 Stevens FR, Gaughan AE, Linard C, *et al.* Disaggregating census data for population mapping using random forests with remotely-sensed and ancillary data. *PLoS One* 2015;10:e0107042.
- 19 National Aeronautics and space administration. Available: <https://terra.nasa.gov/data/aster-data> [Accessed 28 Feb 2021].
- 20 Open street MAP. Available: <https://www.openstreetmap.org/export#map=8/8.420/-80.113> [Accessed 28 Feb 2021].
- 21 Humanitarian data exchange. Available: <https://data.humdata.org/dataset/wfp-geonode-nigeria-road-network-main-roads> [Accessed 28 Feb 2021].
- 22 HydroSHEDS (Hydrological data and maps based on Shuttle Elevation Derivatives at multiple Scales) - Africa river network (streamlines) at 30s resolution (Data Basin Dataset). Available: <https://www.arcgis.com/home/item.html?id=87b95a603fb74642a2f289ec5734a4a1> [Accessed 28 Feb 2021].
- 23 Páez A, Anjum Z, Dickson-Anderson SE, *et al.* Comparing distance, time, and metabolic energy cost functions for walking accessibility in infrastructure-poor regions. *J Transp Geogr* 2020;82:102564.
- 24 Ebener S, Stenberg K, Brun M, *et al.* Proposing standardised geographical indicators of physical access to emergency obstetric and newborn care in low-income and middle-income countries. *BMJ Glob Health* 2019;4:e000778.
- 25 Hamad D, Yousef Y, Caminsky NG, *et al.* Defining the critical pediatric surgical workforce density for improving surgical outcomes: a global study. *J Pediatr Surg* 2020;55:493–512.
- 26 Davies JI, Vreede E, Onajin-Obembe B, *et al.* What is the minimum number of specialist anaesthetists needed in low-income and middle-income countries? *BMJ Glob Health* 2018;3:e001005.
- 27 Kelly C, Hulme C, Farragher T, *et al.* Are differences in travel time or distance to healthcare for adults in global North countries associated with an impact on health outcomes? A systematic review. *BMJ Open* 2016;6:e013059.
- 28 Grabski D, Ameh EA, Ozgediz D, *et al.* Optimal resources for children's surgical care: Executive summary. *World J Surg* 2019;43:978–80.