


BMJ Open Effects of Creative Expressive Arts-based Storytelling (CrEAS) programme on older adults with mild cognitive impairment: protocol for a randomised, controlled three-arm trial

Rong Lin ¹, Yuan-Jiao Yan,¹ Yi Zhou,¹ Yu-Ting Luo,¹ Zhen-Zhen Cai,¹ Kai-Yan Zhu,¹ Hong Li^{1,2}

To cite: Lin R, Yan Y-J, Zhou Y, *et al.* Effects of Creative Expressive Arts-based Storytelling (CrEAS) programme on older adults with mild cognitive impairment: protocol for a randomised, controlled three-arm trial. *BMJ Open* 2020;**10**:e036915. doi:10.1136/bmjopen-2020-036915

► Prepublication history and additional material for this paper are available online. To view these files, please visit the journal online (<http://dx.doi.org/10.1136/bmjopen-2020-036915>).

Received 10 January 2020
Revised 19 May 2020
Accepted 16 July 2020



© Author(s) (or their employer(s)) 2020. Re-use permitted under CC BY-NC. No commercial re-use. See rights and permissions. Published by BMJ.

¹The School of Nursing, Fujian Medical University, Fuzhou, Fujian, China

²Department of Nursing, Fujian Provincial Hospital, Fuzhou, Fujian, China

Correspondence to
Dr Hong Li;
leehong99@126.com

ABSTRACT

Introduction Early non-pharmacological interventions can prevent cognitive decline in older adults with mild cognitive impairment (MCI). Creative expression (CrExp) can potentially mitigate cognitive decline and enhance the physical and mental health of older people. However, it is unclear whether activities involving CrExp can improve cognitive function and other health-related outcomes in older adults with MCI. The aim of the present study is to develop a Creative Expressive Arts-based Storytelling (CrEAS) programme that integrates verbal and non-verbal expressive activities and evaluate its effectiveness in improving cognitive function and other outcome indicators so as to explore its possible mechanism from the perspective of neuroimaging.

Methods and analysis This parallel randomised controlled trial with three arms (one intervention and two control arms) will be conducted over a 24-week period. A total of 111 participants will be enrolled and randomised to the CrEAS, recreation and usual activity groups. The CrEAS programme combines visual arts therapy and storytelling (TimeSlips) under the Expressive Therapy Continuum theoretical framework and provides an opportunity for people with MCI to actively engage in activities to improve cognitive function through verbal and nonverbal CrExp. Global cognitive function, specific domains of cognition (memory, executive function, language and attention) and other health-related outcomes (anxiety, depression and quality of life) will be measured at baseline, at the end of the intervention, and at the 24-week follow-up. Structural/functional brain MRI data will be collected at baseline and immediately after the intervention.

Ethics and dissemination Ethics approval was obtained from the Ethics Committee of Fujian Provincial Hospital (K2018-03-061). The study results will be disseminated through peer-reviewed journals and at academic conferences.

Trial registration number ChiCTR1900021526.

INTRODUCTION

Among individuals over the age of 65 years, the prevalence of dementia approximately doubles every 4 or 5 years; thus, dementia

Strengths and limitations of this study

- This is a novel and innovative randomised controlled trial that will evaluate the effect of activities involving multiple integrated forms of creative expression on cognitive function and other outcome indicators in older people with mild cognitive impairment.
- The study design includes two control groups for performance assessment to take into account ethical issues and bias from motivation and engagement.
- The effectiveness of the intervention will be evaluated by multiple approaches including neuropsychological testing and resting-state MRI and is expected to reveal the mechanistic basis for the effect of the intervention on cognitive function and brain functional network connectivity.
- This is a short-term exploratory study, and the results will require validation in a multicentre trial with a large sample size and longer follow-up period.

occurs in more than one-third of individuals over 85 years old.^{1 2} In 2018, 50 million people worldwide were living with dementia, and it is estimated that the number will exceed 152 million by 2050.³ China has the largest population of patients with dementia in the world, and the incidence of dementia among people over 60 years old is predicted to increase from 14% by 2015 to a staggering 33% by 2050, imposing a heavy social and economic burden on individuals, families, communities and the country as a whole.^{2 4 5}

Given that dementia is non-curable and irreversible, increasing attention has been paid to its prevention. Mild cognitive impairment (MCI)—a neurological disorder between normal function and dementia⁴—is a key stage at which dementia may be delayed or prevented through early intervention.⁶ One-fifth of the population over 65 years of age is

affected by MCI and may benefit from targeted interventions.⁷ Indeed, several trials involving older adults with MCI are currently underway that are testing different pharmacological and non-pharmacological strategies to delay the onset of cognitive decline, for which there are currently no effective treatments.⁸ There is evidence that non-pharmacological interventions improve cognitive functioning in older adults with MCI^{4,8} but not all have demonstrated clinical benefits, thus highlighting the need for more effective or creative approaches. Clinical trials provide an opportunity for interested persons to receive new treatments, which is particularly important when no pharmacological options are available.⁸

Creative expression (CrExp) is characterised by the production of novel or original objects, ideas, perspectives or processes.⁹ For individuals with cognitive impairment, CrExp offers an opportunity for self-expression, social interaction, communication, sensory stimulation and emotional relief in a failure-free setting.⁹ CrExp activities such as storytelling, visual arts, dance, music and dramatic arts are innovative, non-pharmacological interventions that have been applied in clinical settings involving children, patients with cancer, older people and patients with MCI and dementia.¹⁰⁻¹⁵ Among the different types of CrExp, visual arts may be especially useful for people with normal or suboptimal cognition as they have been shown to improve cognitive function, psychological symptoms, physiological state, social well-being and connectedness in older adults with or without cognitive dysfunction,^{13, 16-21} although the findings in individuals exhibiting cognitive decline are controversial. A systematic review of the literature revealed that visual arts therapy has a positive effect on depression, anxiety, quality of life (QoL), coping ability and self-esteem but has no clinically significant effect on cognition.²² On the other hand, a combination of art-based activities and other therapies (eg, physical exercise, cognitive stimulation, music and horticultural therapies) was shown to result in cognitive improvement.^{23, 24} Visual art therapy may enhance cognition in a wide range of individuals but may be particularly effective in those at high risk for dementia.^{25, 26} However, there are many unanswered questions and methodological issues in studies assessing the efficacy of art-based therapy on cognition in older adults experiencing cognitive decline.

Our earlier work in a randomised controlled trial (RCT) comparing the effects of standard cognitive training with a CrExp programme for older people with MCI found that the latter had beneficial effects on cognitive function and daily living ability.¹³ A subsequent exploratory RCT examining the efficacy of CrExp therapy (with the control group receiving standard cognitive training) in older people with dementia demonstrated significant improvements in cognitive function, QoL, level of depression, communication ability and emotional status.²⁷ The main form of CrExp activities in these two studies was storytelling. The TimeSlips storytelling initiative, which was developed in the 1990s for use with persons affected

by dementia of varying severity, employs visual images to encourage spontaneous, improvisational responses, which provides participants with a sense of uniqueness, belonging, support and value while eliciting pleasure and other positive emotions.²⁸⁻³⁰ Storytelling is an important way to communicate and share ideas, life experiences and insights into different topics and provides an opportunity to connect with others.³¹

Art activities and storytelling have each been incorporated into therapeutic approaches for older adults with cognitive impairment. However, their combination may be more beneficial to mental health than each activity alone. Visual art therapy provides psychological benefits and improves cognitive function by allowing self-expression through non-verbal communication,²⁰ while the storytelling encourages social interaction through verbal communication, which assigns the storyteller a valuable social role that can enhance their sense of well-being.^{27, 32} Combining these interventions can have synergistic effects.

Although CrExp activities have received greater support from the medical and scientific communities over the past few years as a viable treatment option for cognitive impairment in older adults, the neural mechanisms underlying the observed cognitive changes are not well understood. A functional brain network is established through neural connections between various regions of the brain; the degree of correlation between neural signals reflects the strength of the functional connections in corresponding regions and hence, short-term functional changes in the brain. Brain functional network analysis thus provides a means of investigating the mechanistic basis for the effects of short-term cognitive interventions. Studies have shown that visual creativity can activate and enhance functional interregional connectivity in the brain.^{33, 34}

CrExp activities are thought to exert cognitive benefits by stimulating the central nervous system through engagement in tasks involving creativity, abstract thinking, planning, different forms of expression and cognitive control; this effect is likely mediated through increased functional connectivity in the brain.

We aimed to develop a Creative Expressive Arts-based Storytelling (CrEAS) programme and conduct a methodologically rigorous RCT to evaluate its effects on neuropsychological outcomes in older adults with MCI. Participants will undergo structural and functional MRI (sMRI and fMRI, respectively) before and after the intervention to examine the neural basis for the effects of the intervention. The study design includes active and waitlist control groups to take into account ethical issues and bias from motivation and engagement. In other studies, the intervention period of art-based activities for older people or for those with cognitive impairment ranged from 3 to 40 weeks, with no consensus as to the optimal duration.^{17, 35-37} Based on the results of our previous work,¹³ we determined that an intervention cycle of 24 weeks and frequency of once a week can achieve clinical benefits. We hypothesise that the 24-week CrEAS intervention will

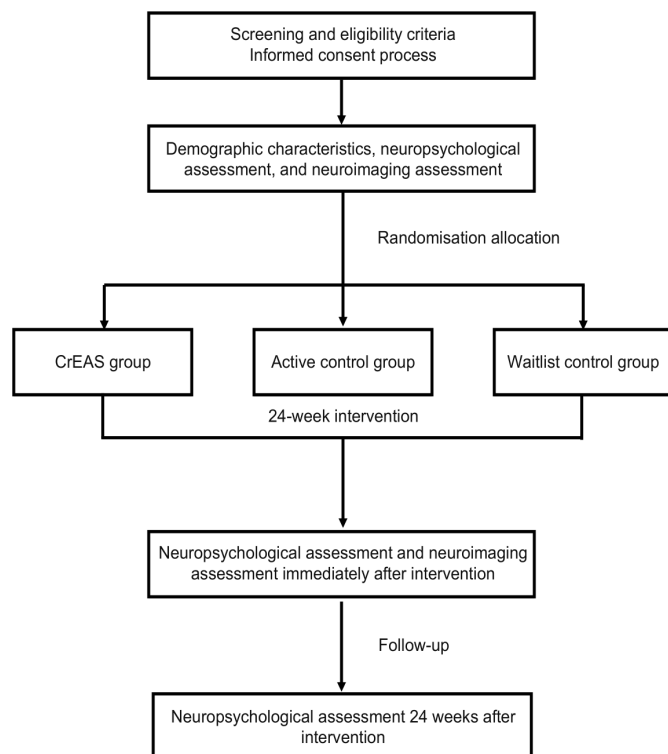


Figure 1 Flow diagram of the study design.

result in greater improvement in cognitive function and other health-related outcomes in older adults with MCI compared with those who continue their usual activities or receive other types of recreational intervention, and that this will be accompanied by favourable changes in functional connectivity of specific brain regions.

METHODS AND ANALYSIS

Study design and registration

The study design is an RCT with three parallel groups in a 1:1:1 allocation ratio, with allocation concealment and assessor blinding. The trial will be conducted in accordance with the Standard Protocol Items for Randomised Trials and Consolidated Standards of Reporting Trials guidelines for non-pharmacological interventions (figure 1).³⁸ Individuals with MCI will be recruited from two centres—namely, Fujian Provincial Hospital and Fujian Provincial Hospital South Branch. A total of 111 eligible participants will be randomised to the 24-week CrEAS intervention (90 min per session, once a week), 24-week recreation intervention (90 min per session, once a week) or 24-week waitlist control group. Global cognitive function and specific domains of cognition (memory, processing speed, executive function, attention and verbal learning and memory) as well as other health-related outcomes will be assessed at baseline before randomisation and at the end of the intervention, while the structure and function of brain regions related to cognition will be assessed by fMRI at these time points.

Recruitment of participants started in December 2019 and the study will be completed in June 2021. All

participants will be provided with consent forms. The trial is registered in the Chinese Clinical Trials Registry.

Participants

Recruitment and screening

The following strategies will be used to ensure adequate enrolment and reach the target sample size: (1) targeted recruitment through memory clinics and the neurology department of the participating hospitals, (2) study posters with the contact information of the researchers posted on notice boards of the participating hospitals, (3) health seminars held at the hospitals' health promotion centres and (4) word-of-mouth by the researchers.

Interested individuals will be instructed on how they can participate in the trial through telephone calls or visits to the participating hospitals. Potential participants who respond to the recruitment strategies and contact the researchers will be screened for study eligibility and safety in a two-stage process consisting of phone and in-person interviews.

- ▶ Phone interview: the study staff will obtain verbal consent from the respondent for their participation in the phone and in-person screenings as well as the respondent's self-reported health history. Potential participants who pass the phone screening will be scheduled for an in-person interview to screen for eligibility.
- ▶ In-person interview: the study staff will corroborate the information obtained during the phone screening, perform an assessment for MCI and complete the MRI safety check. Participants who meet the following inclusion and exclusion criteria will be enrolled. The clinical research coordinator will explain the study to the participants, who will be asked to voluntarily sign an informed consent form before participation.

Inclusion criteria

Participants must meet the following Peterson diagnostic criteria for MCI³⁹: (1) memory problems, preferably confirmed by an informant, (2) memory impairment in accordance with age and education level (Montreal Cognitive Assessment (MoCA) score of 13/14 for individuals with no formal education, 19/20 for individuals with 1–6 years of education and 24/25 for individuals with ≥7 years of education), (3) preserved general cognitive function (Mini-Mental State Examination score between 24 and 30), (4) intact activities of daily living (ADL) (Lawton–Brody ADL score <18) and (5) absence of dementia. The final clinical diagnosis will be made by experienced psychiatrists according to the Diagnostic Statistical Manual of Mental Disorder, Fourth Edition criteria for MCI. Eligible participants must meet the following criteria: (1) diagnosis of MCI, (2) age 60–85 years inclusive, (3) visual and auditory acuity adequate for neuropsychological testing and (4) willingness to provide informed consent.

Exclusion criteria

Exclusion criteria were as follows: (1) severe aphasia or other factors that could preclude completion of neuropsychological assessment or the CrEAS programme, (2) gastrointestinal, renal, hepatic, respiratory or other systemic diseases, (3) other disorders or use of medication that could affect cognitive functions, (4) neurological or psychiatric conditions that could affect cognition (eg, Parkinson's disease, stroke, schizophrenia), (5) participation in another clinical study and (6) contraindication for MRI (only for the MRI examination).

Withdrawal criteria

Participants will be allowed or required to withdraw from the trial based on the following: (1) unwillingness to continue participating, (2) adverse events such as severe illness during the intervention and (3) taking drugs or receiving other cognitive or professional treatment during the study.

Sample size determination

Sample size was calculated based on an improvement in MoCA scores. Similar RCTs¹³ using CrExp therapy for older adults with MCI showed effect sizes for MoCA scores of 24.68 ± 1.84 (intervention group) and 23.13 ± 1.68 (control group). A sample size of 29 participants per group was determined as being sufficient to detect an effect with a type 1 error rate of 5% ($\alpha=0.05$) and 90% power ($\beta=0.10$) using PASS V.11.0 software (NCSS, Kaysville, Utah, USA). Taking into consideration a 20% attrition rate, a total of 111 participants was needed, with 37 participants per group.

Randomisation, allocation concealment and blinding

Participants will be randomised (after obtaining written, informed consent; screening and obtaining baseline measurements) to the CrEAS, active control or waitlist control group at a 1:1:1 ratio. Before randomisation, a researcher not involved in subject recruitment and data collection will prepare a randomisation list with 37 sets of numbers, where 1, 2 and 3 represent the CrEAS, active control and waitlist control groups, respectively, using Research Randomizer software (<http://www.randomizer.org/>). These 37 sets of 111 numbers will be separately printed and each will be sealed in an envelope. After subject recruitment, the researcher will randomly select an envelope to confirm group assignment. Due to the nature of non-pharmacological interventions, the data collector and statisticians—but not the participants and intervention staff—will be blinded.

Intervention

Intervention group

The CrEAS programme is a new non-pharmacological intervention that combines visual arts therapy with storytelling (TimeSlips) under the Expressive Therapy Continuum (ETC) theoretical framework.⁴⁰ The programme provides an opportunity for participants to actively engage in activities that improve cognitive

function through verbal and nonverbal CrExp. In accordance with the Medical Research Council (MRC) guidance for the development and evaluation of complex interventions,^{41 42} the programme was pretested in terms of feasibility in a pilot study. There were two main stages in the design of the CrEAS programme model that guided the development of the programme of activities based on ETC and storytelling components (figure 2). Participants in the CrEAS group will engage in CrExp activities for 24 weeks at a frequency of once per week and 90 min per session, including 60 min of art-making and 30 min of storytelling, under the guidance of an accredited instructor and two auxiliary staff members. The detailed content of the CrEAS programme is shown in table 1.

The ETC is a theoretical model for the assessment and application of media in art therapy.⁴³ It can be used to evaluate the predominance of sensory information processing based on the configuration of formal elements in the artwork and the interaction of the art-maker with the materials. The model also accounts for the effects of the texture and fluidity of the art materials, which are thought to differentially affect cognitive processing and to differ in their potential to elicit emotion.⁴⁴ Based on the ETC, various techniques such as drawing, collage, painting, clay work, origami and quilling will be used in the art-making. The materials used will include but will not be limited to pencils, colour pens, crayons, pastels, watercolour paints and paper. Each session will have a preplanned theme and prepared materials. The CrEAS protocol is detailed in online supplemental file 1.

For storytelling, participants will form a circle and a facilitator will prompt the group with a series of open-ended questions (who, what, where, when, how and why) in reference to artwork completed in the art-making stage, with the aim of eliciting an imaginative response. Participants will be encouraged to share their artwork with the group and vocalise any thought that comes to mind. Responses are woven into an inclusive narrative by the facilitator that is periodically read back to the participants to help them further develop the story or bring it to a conclusion.

Active control group

Participants in the active control group will participate once a week for 24 weeks in group recreational activities facilitated by geriatric nurses. Arts interventions are frequently criticised for lacking a comparator group, which limits the inferences that can be drawn regarding the importance or necessity of the art component⁴⁵; that is, the benefits derived from these interventions have been attributed to social interactions alone.⁴⁶ In this study, non-art-focused social activities will be designed to allow comparisons with the intervention group; these will consist of a 15 min interaction game as a warm-up session, followed by 75 min of puzzle games such as Magic Square, Jigsaw, Unblock Me, Tangram and Sudoku, among others. No specific CrExp activity will be administered to the control group.

Phase	Components	Activity process	Mechanism of creative expression
Art-making Nonverbal Expression	Expressive Therapy Continuum (ETC) <ul style="list-style-type: none"> • Kinesthetic/Sensory • Perceptual/Affective • Cognitive/Symbolic • Creative level 	① Introduction to the theme ② Getting familiar with the media of visual art ③ Trying to use art materials ④ Making choices based on personal preferences ⑤ Brainstorming with the help of lived experience ⑥ Creating with imagination ⑦ Displaying art product	The first phase of CrEAS involves various processes and is considered as art-making. The somatosensory processes of art-making involving the hands are rich in haptic perception. The visual processes guiding aesthetic judgement and the creation of personally meaningful art products require an intense application of perceptual skills, cognitive functions (memory, decision making, and concentration) , and affective expression. These processes involved in art making require complex coordination of different cortical regions. Art making also involves complex interactions among different cerebral regions to administer working memory, enable self-expressions, and make decisions. As a nonverbal modality, art making can aid the brain in processing nonverbal communication and bodily-based affective information associated with various motivations to improve cognitive function and emotional management.
Storytelling Verbal Expression	Framework of verbal communication <ul style="list-style-type: none"> • A story text • The context and socio-cultural setting • The audience or listener contribution • Performance, ownership, and control of the story 	⑧ Question-led storytelling and discussion with each other	The second phase of CrEAS program appeared to offer a formal mechanism for sharing insights, may encouraging the performance of storytelling. Storytelling consists of the following four components and their interactions, that is story content, social-cultural background, responses from listeners, performance of story. Because storytelling activities imply some level of performance on the part of the storyteller, often in response to the expectations or conditions of the audience. The process uses a question-led approach to support participants in sharing imaginary stories, enabling them to feel included, supported and valued. Being with peers with similar social-cultural backgrounds in group activities may stimulate their discussion and resonance. This may enhance the effect of storytelling and achieve favourable results.

Figure 2 The CrEAS programme model. The model will serve as a guide for the targeted interventions in this study; theoretical elements will be used as the basis for formulating an activity plan and for explaining the possible mechanisms underlying the effects of CrExp activities. CrEAS, Creative Expressive Arts-based Storytelling; CrExp, creative expression.

Waitlist control group

Participants in the waitlist control group will engage in their usual activities during the 24 weeks following baseline assessment. After the study, if the other two groups show significant improvements in cognitive function, participants in the waitlist control group will be offered the relevant intervention as a courtesy for their participation.

Study settings

Screening and non-imaging data collection will be performed at the memory clinics of Fujian Provincial Hospital and Fujian Provincial Hospital South Branch.

Imaging data will be obtained at the Centre for Magnetic Resonance Research of Fujian Provincial Hospital. The CrEAS programme (intervention group) will be implemented and recreational activities (active control group) will be performed at the Centre for Health Education and Health Promotion at the two hospitals.

Outcome measures

Demographic characteristics (eg, age, sex, marital status, education level, occupation and socioeconomic status) and history of disease and medication use will be recorded during the initial evaluation. Participants will be assessed

Key element	Illustration
01 Form of activity	Independence and cooperation
02 Activity duration	90 min
03 Frequency of intervention	Once a week
04 Activity session	Art making and storytelling
05 Activity theme	Theme developed from the Handbook of Art Therapy for Groups
06 Activity media	Coloured pens, pencils, pastels, crayons, clay, felt, cloth, watercolour paints, paper of various materials and sizes, etc. (different media chosen from the Handbook of Art Therapy for Groups to match different themes)
07 Form or organisation	Group activity with 6–8 people
08 Intervention staff	Accredited instructor and auxiliary staff (assistants)
09 Programme duration	24 weeks
10 Programme product	Handcrafted products and CrEAS arts exhibition

CrEAS, Creative Expressive Arts-based Storytelling.

**Table 2** Assessment outline and timelines

Item	Screening	Preintervention	Postintervention	Follow-up
		0 week	24 weeks	48 weeks
Eligibility assessment				
Diagnostic criteria	×			
Inclusion criteria	×			
Exclusion criteria	×			
Informed consent				
Demographic characteristics		×		
Neuropsychological assessment		×	×	×
Neuroimaging assessment		×	×	

×, Time point in the trial at which the assessment will take place.

before, immediately after and 24 weeks after the intervention. Outcome measures will include neuropsychological and neuroimaging parameters. All assessments included in the trial are shown in [table 2](#).

Neuropsychological assessment

Various measurements will be obtained to evaluate the effects of the intervention. Outcome measures other than cognitive function will be selected based on the previous studies of art-based interventions in MCI and Alzheimer's disease that reported statistically significant improvements in psychological well-being^{20 47 48} and QoL.^{18 22 49} In the present study, the neuropsychological evaluation will include several commonly used measures of cognitive function, functional status, psychological well-being and QoL.

Primary outcome

The MoCA is a brief but reliable test that evaluates visuospatial/executive function, naming, memory, attention, language, abstraction, delayed recall and orientation.⁵⁰ The Changsha MoCA (MoCA-CS) is the Chinese version of the MoCA that was modified from the original (English) version based on Chinese cultural, linguistic and population characteristics. Scores range from 0 to 30, with a lower score indicating lower cognition function.⁵⁰ The primary outcome (global cognitive function) will be measured with the MoCA-CS, which is widely used in China and has good reliability and validity.^{51 52}

Secondary outcomes

Memory function will be assessed using the Auditory Verbal Learning Test,⁵³ which adopts the rationale and methods of the California Verbal Learning Test and Hong Kong Verbal Learning Tests. The word list consists of 12 two-character words from three semantic categories (flowers, occupations and apparels), with four words in each category. The indicators are immediate recall, delayed recall (after a delay of 20min, during which a non-verbal task is performed) and recognition (12 target words and 12 semantically related distractor words).

Executive function will be evaluated with the Shape Trail Test (STT), a culture-neutral variant of the Trail Making Test

that minimises cultural bias and provides a more accurate cognitive measure of Chinese subjects.⁵⁴ The STT-A requires subjects to connect numbers from 1 to 25; the STT-B shows all numbers (from 1 to 25) two times, once in a circle and once in a square, and subjects are required to draw alternating lines between the circles and squares.

Visuospatial construction ability will be measured with the widely used Rey-Osterrieth Complex Figure Test (ROCF).⁵⁵ The three components of the test are copy, immediate recall and delayed recall. Subjects are given an ROCF stimulus card and asked to draw the same figure. They are then instructed to draw what they remember and after a delay of 30 min, they are required to redraw the same figure.

Language will be measured with the verbal fluency test and Boston Naming Test (BNT). The former requires subjects to list as many words as possible in a given semantic category (eg, animal) in 1 min.⁵⁶ The Chinese version of the BNT, which has good validity and sensitivity,⁵⁷ requires subjects to name 30 drawings that are presented to them.

Attention will be measured with the standardised Symbol Digit Modalities Test, which evaluates directed attention in a complex task.⁵⁸ It requires subjects to substitute 10 geometric symbols that are presented to them with numbers from 1 to 10; the score is the correct number of substitutions in 90s.

Anxiety will be measured with the Zung Self-Rating Anxiety Scale, a 20-item self-report assessment on a four-point scale from 1 (seldom) to 4 (most of the time), with total scores ranging from 20 to 80 and scores over 50 indicating mild to moderate anxiety.⁵⁹

Depression will be evaluated with the Geriatric Depression Scale, a 30-item self-report assessment in which questions are answered with yes or no, with a score greater than 10 indicating depressive symptoms.⁶⁰

QoL will be measured with the 13-item self-rated QoL in Alzheimer's Disease scale, which has poor, fair, good and excellent as response options.⁶¹ Scores for each item range between 1 and 4 and total scores are between 13 and 52, with higher scores indicating a higher QoL.

Neuroimaging assessment

MRI scans will be acquired at baseline and a 24 weeks postintervention on a 3.0 T Prisma scanner (Siemens,

Erlangen, Germany). Quality control checks on the phantom and imaging sequences will be performed before data collection. High-resolution T1-weighted images of the whole brain will be obtained using a sagittal 3D magnetisation-prepared rapid gradient echo sequence. Resting-state fMRI will be performed using a multiband echo-planar imaging sequence.

Data collection and analysis

Enrolled subjects will be scheduled to complete baseline data collection. Data will also be collected after 24 and 48 weeks (6-month follow-up) for cognition and other outcomes. During data collection, rest periods and snacks will be provided to participants as needed. sMRI and fMRI data will be collected at baseline and immediately after the intervention. Subjects who undergo MRI at baseline will be reevaluated for MRI eligibility at 24 weeks. To ensure that data collectors are blinded to group assignment, they will not interact with the subjects except during data collection.

To minimise selection bias, data will be analysed according to the intention-to-treat principle.⁶² Demographic and other baseline characteristics will be summarised with descriptive statistics. We will compare changes in neuropsychological test scores and other outcomes from baseline to 24 weeks and from baseline to 48 weeks for the three groups using a repeated-measures mixed linear model, which will be adjusted for potential confounders such as age, sex and education level. This analysis will be two-tailed with alpha level set at 0.05 and will be performed using SPSS V.21.0 software (IBM, Armonk, New York, USA). Missing data will be handled by multiple imputation.

sMRI, fluid-attenuated inversion recovery and blood oxygen level-dependent fMRI data will be collected in a 30 min session. High-resolution T1-weighted images of the whole brain will be obtained using a sagittal 3D magnetisation prepared rapid gradient echo sequence with the following parameters: repetition time (TR)=2530 ms; echo time (TE)=2.98 ms; slice thickness=1 mm; 192 slices; flip angle=7°; voxel size=1.0×1.0×1.0 mm³; field of view (FOV)=256×256 mm². Resting-state fMRI will be conducted using a multiband echo-planar imaging sequence with the following parameters: TR=2000 ms; TE=30 ms; 33 slices; voxel-size=3.5×3.5×3.5 mm³; flip angle=90°; FOV=224×224 mm². fMRI data will be processed using SPM V.12 (<https://www.fil.ion.ucl.ac.uk/spm/software/spm12/>) in MATLAB 2013b (MathWorks, Natick, Massachusetts, USA). fMRI data preprocessing will consist of slice-timing correction, realignment, coregistration, segmentation, spatial normalisation, Gaussian spatial smoothing, time series linear detrending, filtering and nuisance regression performed with 24 subject-specific realignment parameters; the signal from white matter and cerebrospinal fluid and their first-order derivatives will be included as confounds.

Data monitoring and interim analyses

The principal investigator will be responsible for reviewing the data in collaboration with the statisticians

and ensuring their completeness and validity. Participants' attendance and withdrawal rates, adherence and adverse events will be recorded in detail by the study coordinators, who will also ensure data creation, integrity, quality control checks and audits and will review the accuracy and completeness of data collection forms before the data are entered into the hospital's electronic information database.

Patient and public involvement

When designing the procedures, some experts will be invited to follow the development process of complex interventions in strict accordance with the MRC framework. Additionally, consumers will be invited to consult on the content of the CrEAS programme. Participants will not be involved in research design, recruitment, study execution or dissemination of study findings. We will use a satisfaction questionnaire and suggestion form to examine participants' attitudes regarding this trial and obtain feedback.

Ethics and dissemination

This study strictly adheres to ethical principles outlined in the Declaration of Helsinki and respects the wishes of each participant. The protocol was approved by the Ethics Committee of Fujian Provincial Hospital (K2018-03-061). Before the study is initiated, the purpose, content and process of the study will be fully explained to each participant and written, informed consent will be obtained prior to their enrolment. The researchers will not release the subjects' personal information or compromise their privacy under any circumstances. There are no plans to share the results of the study or details of the analysis of study data with the participants, which will be specified in the consent form. Cognitive test results and clinical diagnosis based on MRI scans will be provided on request to participants by the physician. Study results will be disseminated through peer-reviewed journals and at domestic and international academic conferences.

DISCUSSION

Early non-pharmacological intervention is the mainstay of treatment for prevention and management of cognitive decline. Some studies have shown that participation in CrExp activities such as visual arts and storytelling can improve mental and physical health in older adults with cognitive impairment,^{16 63 64} although this remains controversial.³⁷ We designed a CrEAS programme that integrates activities involving verbal and non-verbal expression and evaluated its effectiveness in improving cognitive function and other health-related outcomes in older adults with MCI. We will adopt rigorous methods to reduce bias such as randomisation, blinding, theoretical innovation and comparisons to a control group. The effectiveness of the intervention will be evaluated using different methods including neuropsychological testing and resting-state MRI; the latter is expected to provide

insight into the neural mechanisms underlying the effects of the CrEAS programme. Another novel aspect of this trial is that it will compare the effects of CrExp versus standard recreational therapies on cognitive function.

This study has several limitations. First, there will be an unavoidable bias in participant selection as the older adults with MCI who are enrolled in the trial will tend to be highly motivated. Second, given the nature of non-pharmacological interventions, it is difficult to blind researchers and participants to group assignment. In addition, although we will use multiple strategies for subject recruitment, it will be difficult to ensure that eligible participants have not previously met or interacted. Distortion of the intervention will be difficult to control even if we explain its purpose and trial requirements in detail to the participants beforehand. Finally, because of planning constraints, we may need to perform postintervention assessment at a different time of day than the baseline assessment.

In conclusion, this trial will test whether CrExp in multiple forms can improve cognitive function in older adults with MCI. If the intervention is found to be effective, the results of this study will provide evidence that non-pharmacological therapy is effective for cognitive rehabilitation and potentially for preventing the progression of MCI to dementia.

Acknowledgements The authors would like to thank the experts for their insightful advice, and thank the participants of this study and patient advisers for their support. The authors would also like to thank the staffs and management involved in the study at all the participating memory clinics.

Contributors RL and Y-JY are joint first authors. RL and Y-JY designed the study and drafted the manuscript. HL conceived the study, critically revised the manuscript, obtained funding and will supervise the study. YZ is in charge of coordination and direct implementation. Y-TL, Z-ZC and K-YZ helped to develop the study measures and analyses. All authors contributed to drafting the manuscript and have read and approved the final manuscript.

Funding This study was funded by the National Natural Science Foundation of China (81571379); Startup Fund for Scientific Research, Fujian Medical University, China (2018QH2023); and high-level hospital foster grants from Fujian Provincial Hospital, Fujian Province, China (2019HSJJ10).

Competing interests None declared.

Patient consent for publication Obtained.

Provenance and peer review Not commissioned; externally peer reviewed.

Supplemental material This content has been supplied by the author(s). It has not been vetted by BMJ Publishing Group Limited (BMJ) and may not have been peer-reviewed. Any opinions or recommendations discussed are solely those of the author(s) and are not endorsed by BMJ. BMJ disclaims all liability and responsibility arising from any reliance placed on the content. Where the content includes any translated material, BMJ does not warrant the accuracy and reliability of the translations (including but not limited to local regulations, clinical guidelines, terminology, drug names and drug dosages), and is not responsible for any error and/or omissions arising from translation and adaptation or otherwise.

Open access This is an open access article distributed in accordance with the Creative Commons Attribution Non Commercial (CC BY-NC 4.0) license, which permits others to distribute, remix, adapt, build upon this work non-commercially, and license their derivative works on different terms, provided the original work is properly cited, appropriate credit is given, any changes made indicated, and the use is non-commercial. See: <http://creativecommons.org/licenses/by-nc/4.0/>.

ORCID iD

Rong Lin <http://orcid.org/0000-0003-3147-2716>

REFERENCES

- Jorm AF, Korten AE, Henderson AS. The prevalence of dementia: a quantitative integration of the literature. *Acta Psychiatr Scand* 1987;76:465–79.
- Prince M, Comas-Herrera A, Knapp M, et al. World Alzheimer report: improving healthcare for people living with dementia: coverage, quality and costs now and in the future 2016.
- Patterson C. *World Alzheimer report: Alzheimer's disease International: the state of the art of dementia research: new frontiers*, 2018.
- Academy of Cognitive Disorders of China (ACDC), Han Y, Jia J, et al. Expert consensus on the care and management of patients with cognitive impairment in China. *Neurosci Bull* 2020;36:307–20.
- Jia L, Quan M, Fu Y, et al. Dementia in China: epidemiology, clinical management, and research advances. *Lancet Neurol* 2020;19:81–92.
- Kivipelto M. Lifestyle intervention to prevent cognitive impairment. *Neurobiol Aging* 2016;39:S18.
- Livingston G, Sommerlad A, Orgeta V, et al. Dementia prevention, intervention, and care. *Lancet* 2017;390:2673–734.
- Petersen RC, Lopez O, Armstrong MJ, et al. Practice guideline update summary: mild cognitive impairment: report of the Guideline development, Dissemination, and Implementation Subcommittee of the American Academy of Neurology. *Neurology* 2018;90:126–35.
- Phillips LJ, Conn VS. The relevance of creative expression interventions to person-centered care. *Res Gerontol Nurs* 2009;2:151–2.
- Rousseau C, Drapeau A, Lacroix L, et al. Evaluation of a classroom program of creative expression workshops for refugee and immigrant children. *J Child Psychol Psychiatry* 2005;46:180–5.
- Green AR, Young RA. The lived experience of visual creative expression for young adult cancer survivors. *Eur J Cancer Care* 2015;24:695–706.
- McGarry J, Bowden D. Unlocking stories: older women's experiences of intimate partner violence told through creative expression. *J Psychiatr Ment Health Nurs* 2017;24:629–37.
- Zhao J, Li H, Lin R, et al. Effects of creative expression therapy for older adults with mild cognitive impairment at risk of Alzheimer's disease: a randomized controlled clinical trial. *Clin Interv Aging* 2018;13:1313–20.
- George DR, Houser WS. "I'm a storyteller!": Exploring the benefits of TimeSlips creative expression program at a nursing home. *Am J Alzheimers Dis Other Demen* 2014;29:678–84.
- Deshmukh SR, Holmes J, Cardno A. Art therapy for people with dementia. *Cochrane Database Syst Rev* 2018;9:CD011073.
- Bennington R, Backos A, Harrison J, et al. Art therapy in art museums: promoting social connectedness and psychological well-being of older adults. *Arts Psychother* 2016;49:34–43.
- Beard RL. Art therapies and dementia care: a systematic review. *Dementia* 2012;11:633–56.
- Hattori H, Hattori C, Hokao C, et al. Controlled study on the cognitive and psychological effect of coloring and drawing in mild Alzheimer's disease patients. *Geriatr Gerontol Int* 2011;11:431–7.
- Pongan E, Tillmann B, Leveque Y, et al. Can musical or painting interventions improve chronic pain, mood, quality of life, and cognition in patients with mild Alzheimer's disease? evidence from a randomized controlled trial. *J Alzheimers Dis* 2017;60:663–77.
- Masika GM, Yu DSF, Li PWC, et al. Visual art therapy as a treatment option for cognitive decline among older adults. A systematic review and meta-analysis. *J Adv Nurs* 2020;4.
- Mahendran R, Gandhi M, Moorakonda RB, et al. Art therapy is associated with sustained improvement in cognitive function in the elderly with mild neurocognitive disorder: findings from a pilot randomized controlled trial for art therapy and music reminiscence activity versus usual care. *Trials* 2018;19:615.
- Uttley L, Scope A, Stevenson M, et al. Systematic review and economic modelling of the clinical effectiveness and cost-effectiveness of art therapy among people with non-psychotic mental health disorders. *Health Technol Assess* 2015;19:1–120.
- Kang H-Y, Bae Y-S, Kim E-H, et al. An integrated dementia intervention for Korean older adults. *J Psychosoc Nurs Ment Health Serv* 2010;48:42–50.
- Roswiyani R, Kwakkenbos L, Spijker J, et al. The effectiveness of combining visual art activities and physical exercise for older adults on well-being or quality of life and mood: a scoping review. *J Appl Gerontol* 2019;38:1784–804.
- Blomdahl C, Gunnarsson AB, Guregård S, et al. A realist review of art therapy for clients with depression. *Arts Psychother* 2013;40:322–30.
- Maujean A, Pepping CA, Kendall E. A systematic review of randomized controlled studies of art therapy. *Art Therapy* 2014;31:37–44.

- 27 Lin R, Chen H-Y, Li H, *et al.* Effects of creative expression therapy on Chinese elderly patients with dementia: an exploratory randomized controlled trial. *Neuropsychiatr Dis Treat* 2019;15:2171–80.
- 28 Basting AD. *Forget memory: creating better lives for people with dementia Baltimore*. Johns Hopkins University Press, 2009.
- 29 Houser WS, George DR, Chinchilli VM. Impact of TimeSlips creative expression program on behavioral symptoms and psychotropic medication use in persons with dementia in long-term care: a cluster-randomized pilot study. *Am J Geriatr Psychiatry* 2014;22:337–40.
- 30 Younger D, Martin GW. Dementia care mapping: an approach to quality audit of services for people with dementia in two health districts. *J Adv Nurs* 2000;32:1206–12.
- 31 Fels DI, Astell AJ. Storytelling as a model of conversation for people with dementia and caregivers. *Am J Alzheimers Dis Other Demen* 2011;26:535–41.
- 32 Phillips LJ, Reid-Arndt SA, Pak Y. Effects of a creative expression intervention on emotions, communication, and quality of life in persons with dementia. *Nurs Res* 2010;59:417–25.
- 33 Bolwerk A, Mack-Andrick J, Lang FR, *et al.* How art changes your brain: differential effects of visual art production and cognitive art evaluation on functional brain connectivity. *PLoS One* 2014;9:e101035.
- 34 De Pisapia N, Bacci F, Parrott D, *et al.* Brain networks for visual creativity: a functional connectivity study of planning a visual artwork. *Sci Rep* 2016;6:39185.
- 35 Young R, Camic PM, Tischler V. The impact of community-based arts and health interventions on cognition in people with dementia: a systematic literature review. *Aging Ment Health* 2016;20:337–51.
- 36 Eekelaar C, Camic PM, Springham N. Art galleries, episodic memory and verbal fluency in dementia: an exploratory study. *Psychol Aesthet Creat Arts* 2012;6:262–72.
- 37 Lee R, Wong J, Lit Shoon W, *et al.* Art therapy for the prevention of cognitive decline. *Arts Psychother* 2019;64:20–5.
- 38 Chan A-W, Tetzlaff JM, Altman DG, *et al.* SPIRIT 2013 statement: defining standard protocol items for clinical trials. *Ann Intern Med* 2013;158:200–7.
- 39 Petersen RC. Mild cognitive impairment as a diagnostic entity. *J Intern Med* 2004;256:183–94.
- 40 Hinz LD. *Expressive therapies continuum: a framework for using art in therapy*. New York: Routledge, 2019.
- 41 Craig P, Dieppe P, Macintyre S, *et al.* Developing and evaluating complex interventions: the new medical Research Council guidance. *BMJ* 2008;337:a1655.
- 42 Bleijenberg N, de Man-van Ginkel JM, Trappenburg JCA, *et al.* Increasing value and reducing waste by optimizing the development of complex interventions: enriching the development phase of the medical Research Council (MRC) framework. *Int J Nurs Stud* 2018;79:86–93.
- 43 Lusebrink VB. Assessment and therapeutic application of the expressive therapies continuum: implications for brain structures and functions. *Art Therapy* 2010;27:168–77.
- 44 Lusebrink VB, Märtinsone K, Džilna-Šilova I. The expressive therapies continuum (etc): interdisciplinary bases of the etc. *Int J Art Ther* 2013;18:75–85.
- 45 Johnson J, Culverwell A, Hulbert S, *et al.* Museum activities in dementia care: using visual analog scales to measure subjective wellbeing. *Dementia* 2017;16:591–610.
- 46 Simmons L L. *Interactive art therapy: “no talent required” projects*. New York: Haworth Press, 2006.
- 47 Masika GM, Yu DSF, Li PWC. Can visual art therapy be implemented with illiterate older adults with mild cognitive impairment? A pilot Mixed-Method randomized controlled trial. *J Geriatr Psychiatry Neurol*;7:089198872090178.
- 48 Kim H-K, Kim KM, Nomura S. The effect of group art therapy on older Korean adults with neurocognitive disorders. *Arts Psychother* 2016;47:48–54.
- 49 Windle G, Joling KJ, Howson-Griffiths T, *et al.* The impact of a visual arts program on quality of life, communication, and well-being of people living with dementia: a mixed-methods longitudinal investigation. *Int Psychogeriatr* 2018;30:409–23.
- 50 Cai Y, Jia Z, Zhang X, *et al.* Study on multi-center investigation of the Chinese version of national Institutes of health stroke scale. *J Tradit Chin Med* 2008;31:494–8.
- 51 Patel MD, Coshall C, Rudd AG, *et al.* Cognitive impairment after stroke: clinical determinants and its associations with long-term stroke outcomes. *J Am Geriatr Soc* 2002;50:700–6.
- 52 Ozdemir F, Birtane M, Tabatabaei R, *et al.* Cognitive evaluation and functional outcome after stroke. *Am J Phys Med Rehabil* 2001;80:410–5.
- 53 Zhao Q, Lv Y, Zhou Y, *et al.* Short-term delayed recall of auditory verbal learning test is equivalent to long-term delayed recall for identifying amnesic mild cognitive impairment. *PLoS One* 2012;7:e51157.
- 54 Zhao Q, Guo Q, Li F, *et al.* The shape TRAIL test: application of a new variant of the TRAIL making test. *PLoS One* 2013;8:e57333.
- 55 Shin M-S, Park S-Y, Park S-R, *et al.* Clinical and empirical applications of the Rey-Osterrieth complex figure test. *Nat Protoc* 2006;1:892–9.
- 56 Guo Q, Jin L, Hong Z. A specific phenomenon of animal fluency test in Chinese elderly. *Chin Ment Health J* 2007;21:622–5.
- 57 Guo Q, Hong Z, Shi W X. Boston naming test in Chinese elderly, patient with mild cognitive impairment and Alzheimer’s dementia. *Chin Ment Health J* 2006;20:81–4.
- 58 Tennessen CM, Cimprich B. Views to nature: effects on attention. *J Environ Psychol* 1995;15:77–85.
- 59 Zung WW. A rating instrument for anxiety disorders. *Psychosomatics* 1971;12:371–9.
- 60 Chan AC. Clinical validation of the geriatric depression scale (GDS): Chinese version. *J Aging Health* 1996;8:238–53.
- 61 HM Y, RL H, YM A. *Reliability and validity of the quality of life-alzheimer disease Chinese version*, 2013: 230–6.
- 62 Hollis S, Campbell F. What is meant by intention to treat analysis? survey of published randomised controlled trials. *BMJ* 1999;319:670–4.
- 63 Vigliotti AA, Chinchilli VM, George DR. Evaluating the benefits of the TimeSlips creative Storytelling program for persons with varying degrees of dementia severity. *Am J Alzheimers Dis Other Demen* 2019;34:163–70.
- 64 Fancourt D, Steptoe A. The art of life and death: 14 year follow-up analyses of associations between arts engagement and mortality in the English longitudinal study of ageing. *BMJ* 2019;367:l6377.