



Published in final edited form as:

Pediatr Res. 2015 November ; 78(5): 498–504. doi:10.1038/pr.2015.152.

Serum Eotaxin-1 is Increased in Extremely Low Birth Infants with Bronchopulmonary Dysplasia or Death

Jegen Kandasamy, MD¹, Claire Roane, RN¹, Alexander Szalai, PhD², and Namasivayam Ambalavanan, MD¹

¹Department of Pediatrics, University of Alabama at Birmingham, Birmingham, Alabama, USA

²Department of Medicine, University of Alabama at Birmingham, Birmingham, Alabama, USA

Abstract

Background—Early systemic inflammation in extremely low birth weight (ELBW) infants is associated with an increased risk of bronchopulmonary dysplasia (BPD). Our objective was to identify circulating biomarkers and develop prediction models for BPD/death soon after birth.

Methods—Blood samples from postnatal day 1 were analyzed for CRP by ELISA and for 39 cytokines/chemokines by a multiplex assay in 152 ELBW infants. The primary outcome was physiologic BPD or death by 36w. CRP, cytokines, and clinical variables available at 24 h were used for forward stepwise regression and Classification and Regression Tree (CART) analysis to identify predictors of BPD/death.

Results—Overall, 24% developed BPD and 35% died or developed BPD. Regression analysis identified birth weight and eotaxin (CCL11) as the two most significant variables. CART identified FiO₂ at 24h (11% BPD/death if FiO₂ < 28%, 49% if >28%) and eotaxin in infants with FiO₂>28% (29% BPD/death if eotaxin was < 84 pg/ml; 65% if >84) as variables most associated with outcome.

Conclusion—Eotaxin measured on the day of birth is useful for identifying ELBW infants at risk of BPD/death. Further investigation is required to determine if eotaxin is involved in lung injury and pathogenesis of BPD.

Introduction

Bronchopulmonary dysplasia (BPD) is a chronic lung disease of infancy secondary to disordered postnatal bronchoalveolar and pulmonary vascular development and maturation. A third of extremely low birth weight (ELBW) infants develop BPD, making it one of the most common morbidities following preterm birth (1). BPD has a multifactorial etiology associated with many postnatal risk factors including prolonged mechanical ventilation,

Users may view, print, copy, and download text and data-mine the content in such documents, for the purposes of academic research, subject always to the full Conditions of use:http://www.nature.com/authors/editorial_policies/license.html#terms

Corresponding author: Namasivayam Ambalavanan, 176F Suite 9380, Women and Infants Center, 619 South 19th Street, Birmingham, AL 35249, USA, Ph: 205-934-4680; Fax: 205-934-3100, nambalavanan@peds.uab.edu.

Conflicts of interest/Financial Disclosures: There are no conflicts of interest or financial disclosures (other than funding as stated above) for any of the authors.

exposure to hyperoxia, infections, and differences in genetic predisposition (2). The risk of BPD is also increased by prenatal factors including maternal chorioamnionitis, preeclampsia and intrauterine growth retardation (IUGR) (3). Excessive inflammation or a predisposition to accentuation of inflammation for a given stimulus is a common theme for many of these predisposing factors.

Cytokines, a large group of immune-modulatory proteins that also perform non-immune functions, are major mediators of inflammatory pathways. A number of these cytokines including TNF- α , IL-1 β and IL-6 are increased in tracheal aspirates of infants with BPD, and increased tracheal IL-6 and IL-8 concentrations have been shown to precede the development of BPD (4, 5). Pro-inflammatory cytokines such as IL-1, IL-6 and IL-17 increase the production of C-reactive protein (CRP), an acute phase reactant that decreases surfactant activity in a dose-dependent manner (6). We have shown recently that CRP is a biomarker for BPD/death in ELBW infants (7).

Our hypothesis in this study was that specific serum cytokine levels available by 24 hours of life would help in early identification of ELBW infants at risk for BPD or death. We also attempted to develop predictive models for BPD risk stratification by adding cytokine data to clinical variables available in the first postnatal day. We used a combined outcome of death or BPD in order to include infants who died soon after birth before they could be defined as having BPD at 36 weeks' age (i.e., death is a competing outcome for BPD; most deaths in extremely preterm infants are due to respiratory causes, even if the processes leading to death and BPD are sometimes different e.g. sepsis (8)). Our choice of including death together with BPD to form a combined primary outcome identifies a group of ELBW infants at high risk for poor outcome.

Results

Clinical characteristics

Of 267 eligible infants, informed consent was obtained from mothers/caregivers of 152 infants, and these 152 infants were then enrolled in the study and followed to 36 weeks' post-menstrual age. 47% of infants enrolled were white, and 53% were black. 42% were male (Table 1). The mean gestational age of infants enrolled was 25.2 ± 2.8 weeks; mean birth weight was 720.16 ± 147 g. 61% of all infants enrolled were delivered by cesarean section. 91% of all mothers received at least 1 dose of antenatal steroids (ANS). 35 (23 %) infants were small for gestational age (SGA), and 117 (77%) were appropriate for gestational age (AGA). 52% of our infant cohort was mechanically ventilated at 24h of age, another 14% required continuous positive airway pressure, 14% required supplemental oxygen only, and the rest were stable in room air. Overall, 35 infants (23%) developed BPD, 18 infants (11%) died, and 99 (66%) survived to 36 weeks without BPD (Table 1).

The median postnatal age of the group of infants who died was 11 days (IQR: 5 – 20). 11 of these infants (61%) were black. They were also more immature compared to infants who survived (24 w vs. 25 w, 620 g vs. 710 g, both $p < 0.001$). 8 of these infants died due to RDS, 3 due to sepsis, and another 2 due to RDS with sepsis. 4 deaths were due to

gastrointestinal causes such as NEC and spontaneous intestinal perforation. One infant died at a postnatal age of 77 days due to unclassified causes.

Cytokines

Of the 39 cytokines (Table 2) that were measured, only eotaxin-1 (CCL11) was higher in infants who developed BPD compared to infants who survived without BPD (median (25-75th centile) pg/ml: 112 (40-247) vs. 48 (16-108), $p = 0.02$). Infants who died also had higher serum eotaxin concentration when compared to infants who survived without BPD (median (25-75th centile) pg/ml: 103 (25-152) vs. 48 (16-108), $p = 0.03$). These differences in eotaxin concentration persisted when infants who developed BPD or died before 36 weeks PMA were compared to infants who survived without BPD (median (25-75th centile) pg/ml: 108 (31-198) vs. 48 (16-108), $p = 0.017$) (Figure 1). MDC (macrophage-derived cytokine; CCL22) was also higher in infants who developed BPD or died (median (25-75th centile) pg/ml: 826 (493-1162) vs. 627 (30, 1001), $p = 0.035$). Neither eotaxin nor MDC correlated strongly with BW or GA ($r < 0.2$, $p > 0.05$). Eotaxin correlated strongly with GM-CSF, IL-6, MCP-1 ($r > 0.7$, $p < 0.001$) and moderately with IL-1, 2, 3, 7, 8, 9, 10, IFN- γ , Fractalkine, MCP-3, MIP-1, and TNF- α ($r = 0.4-0.7$, $p < 0.001$); in contrast, MDC was only weakly correlated with other cytokines (r values of 0.28, 0.002, 0.066 with GM-CSF, IL-6 and MCP-1 respectively, all p values > 0.5).

Regression analysis was carried out using clinical variables considered relevant to BPD pathogenesis that are usually available by 24 hours of life (birth weight (BW), gestational age (GA), ethnicity, sex, multiple birth, chorioamnionitis, maternal antenatal steroid use, Apgar scores at 1 and 5 min, CRP, and the 39 cytokines; BPD and/or death was the dependent variable. Birth weight and eotaxin-1 (partial R^2 of 0.13 and 0.09, respectively) were identified as the two most significant variables in this analysis.

Stepwise forward classification and regression analysis (CART) using BPD and/or death as outcome variable identified FiO_2 at 24h (11% BPD/death if $FiO_2 < 28\%$, 49% if $> 28\%$) as the only significant factor that was predictive of risk for BPD and/or death (Figure 2). Of the cytokines that were analyzed, only eotaxin-1 was identified as a significant predictor for risk of BPD/death in infants with $FiO_2 > 28\%$ (29% BPD/death if eotaxin-1 was < 84 pg/ml; 65% if > 84). The thresholds for FiO_2 at 24h ($FiO_2 < 28\%$ vs. $> 28\%$) and eotaxin-1 (< 84 pg/ml vs. > 84 pg/ml) were identified by the CART analysis. No other cytokine, including MDC, improved predictive ability of this model for BPD/death in ELBW infants.

Subgroup analyses of cytokines based on chorioamnionitis, pregnancy induced hypertension (PIH) and IUGR status were also carried out. There were no significant differences in cytokine levels between SGA and AGA infants. Our study had 35 SGA infants of whom 16 (45%) developed BPD or died, compared to 38 of 117 infants in the AGA group (32%). Eotaxin-1 and MDC were higher in AGA infants who died or developed BPD compared to those who survived (median (25-75th centile) pg/ml: eotaxin: 118.00 (54-248.00) vs. 49 (17-104), $p = 0.003$, MDC: 1059 (629- 1438) vs. 580 (277-960), $p = 0.001$). Among SGA infants there were no significant differences in cytokine levels between the two groups. Infants born to mothers with PIH had similar eotaxin levels compared to infants born to mothers without PIH (median (25-75th centile) pg/ml: 51 (12-124) vs. 67 (20-129), $p = 0.71$).

Infants born to mothers who had chorioamnionitis had similar levels of all cytokines that were measured compared to infants whose mothers did not (median (25-75th centile) pg/ml: 46 (0-125) vs. 55 (25-124), $p=0.45$).

Eosinophil counts and outcomes

As the primary role of eotaxin (the only cytokine identified as significant in the CART analysis) is eosinophil chemotaxis and activation, a post-hoc analysis of absolute eosinophil counts was carried out. Absolute eosinophil count (Figure 3) was significantly higher in infants who died or developed BPD (median (25-75th centile) cells/mm³: 189 (79-530) vs. 140 (43-251), $p<0.05$). However, there was no correlation between eotaxin-1 concentrations and absolute eosinophil counts ($r = 0.03$, $p > 0.5$).

Clinical characteristics and outcomes

In addition to cytokine measurements, certain clinical variables were also correlated with BPD and/or death. 63% of mothers of infants who survived without BPD received a complete course of prenatal steroids compared to 33% of mothers whose infants died and 38% of mothers whose infants developed BPD ($p<0.05$). Infants who developed BPD weighed less at birth compared to those that survived without BPD ($P<0.001$). However there was no significant difference in mean gestational age between the two groups, suggesting that growth restriction (lower birth weight for similar GA) was a contributor to BPD (Table 1).

At 24 hours of age, median supplemental oxygen requirements were 45%, 36% and 30% for infants who died, survived with BPD, and survived without BPD respectively ($p < 0.001$). More infants who died also required invasive mechanical ventilation compared to those who survived with, or without BPD (89%, 69% and 39% respectively, $p < 0.001$ or those who did not have BPD. Incidence of pulmonary hemorrhage was higher for infants who died (33%) compared to infants who survived with BPD (11%) or infants who survived without BPD (7%) ($p<0.05$). As would be expected, the cumulative duration of supplemental oxygen therapy was significantly higher at 36 weeks PMA for infants who developed BPD or died compared to infants who did not have BPD (Table 1). They were also mechanically ventilated for longer duration by 36 weeks PMA (16.33 ± 24 days) compared to BPD-free survivors (7.1 ± 12 days). ELBW infants who died or developed BPD in our study had a cumulative duration of need for supplemental oxygen of 39 ± 34 days (6 weeks), a duration shorter than their mean duration to 36 weeks PMA (11 weeks). We believe this was due to the quick resolution of initial RDS, followed by a more insidious pattern of waxing and waning oxygen requirements in later life – a pattern reflective of the “new” BPD phenotype that is more often seen these days, due to increased exposure to antenatal steroids and surfactant. It may also be reflective of the fact that infants who died in our study had a mean age of 16 days, which means they received supplemental oxygen for a shorter duration than the sub-group of survivors with BPD who received oxygen for a longer duration (59 ± 22 days).

There was no significant association between maternal clinical or histologic chorioamnionitis and the risk for BPD or death, although 9 of 18 infants who died (50%)

were exposed to histological chorioamnionitis (50%), compared to 25 (22%) infants who developed BPD and 37 (37%) of infants who survived without BPD ($p = 0.12$). Early onset sepsis, often associated with maternal chorioamnionitis, was also similar in incidence between infants who died, developed BPD and those who survived without BPD by 36 weeks PMA. The incidence of blood culture positive late onset sepsis, on the other hand, was significantly higher for infants who developed BPD or died compared to infants who survived without BPD (57% vs 33%, $p = 0.003$). Interestingly, the incidence of late onset sepsis was lower for infants who died than for infants who developed BPD (39% vs 66%), most likely due to their early death. No differences were noted in the incidence of meningitis between infants who died, or survived, with or without BPD.

Discussion

The aims of the current study were to identify specific cytokines and/or cytokine profile patterns in ELBW infants soon after birth that would be useful to predict their risk for BPD and/or death. Our CART model using clinical factors available on the first postnatal day showed that only FiO_2 was useful as a predictor of this risk. Of the 40 mediators (CRP and 39 cytokines) that were measured, only serum eotaxin-1 (CCL11) measured on the day of birth added to the predictive ability of this model. Other cytokines such as IL-1 β and TNF- α as well as CRP were similarly distributed among infants who either died or developed BPD and those that survived without BPD. Eotaxin-1 levels correlated strongly with some of these cytokines including GM-CSF, IL-6 and MCP-1, but poorly with birth weight or gestational age. We also found that while eosinophil counts in the first few days of life were significantly higher in infants at risk of death or BPD, there was no correlation between eotaxin-1 levels and absolute eosinophil count.

Cytokines have been previously studied with regard to BPD and/or death in large cohorts of ELBW infants. A recent study conducted by the Neonatal Research Network (NRN) evaluated serum profiles of 25 different cytokines between the 3rd and 28th days of life in a cohort of 1067 ELBW infants and showed that higher concentrations of cytokines such as IL-1 β , IL-6, IL-8 and IL-10, and IFN- γ preceded BPD/death; as did lower concentrations of other cytokines (IL-17, regulated on activation, normal T cell expressed and secreted (RANTES), and TNF- β) (9). The Extremely Low Gestational Age Neonates (ELGAN) study analyzed 25 proteins including cytokines and chemokines at several time points in the first 2 weeks of life in a cohort of 932 infants (10). While no differences in cytokines were noted in the first week of life between infants with severe BPD and those with no BPD, increased inflammatory signaling was strongly evident in infants with severe BPD who had significantly higher levels of several cytokines by 14 days of life, including TNF- α , IL-6, IL-8 and MCP-1 (10). In addition to TNF- α elevation, lower levels of RANTES were also seen more commonly in infants who developed BPD in both these large studies. Other outcomes related to ELBW infants such as cerebral palsy and retinopathy of prematurity have also been related to specific cytokine patterns (11-13).

Similar to these large cohorts, an important limitation of the current study is its observational nature which precludes derivation of cause-effect conclusions; hypothesis generation for future studies would be the key benefit. Another limitation is that only serum

cytokines were measured. Many cytokines are produced in an autocrine manner in organs affected by inflammation, so measurement of tracheal aspirate or bronchoalveolar lavage (BAL) fluid in addition to serum cytokine levels might have been more suitable to study the impact of cytokine associated inflammation on BPD. BPD, however, is primarily an alveolar-interstitial disease and tracheal aspirate or BAL is more representative of airway inflammation, making such an extrapolation also similarly imperfect.

Strengths of this study include the prospective nature of clinical and cytokine data collection, recruitment of a relatively large number of infants for a study of this nature and the addition of death prior to 36 weeks to BPD for the primary study outcome which removes confounding due to competing outcomes. The Luminex assay used in this study has low intra-assay (2-13%) and inter-assay (5-17%) variability for cytokine and chemokine quantitation and has been well-validated (14). 39 cytokines were analyzed using this method, while previous studies based on other technologies measured fewer individual cytokines. Interestingly, this is the first study to our knowledge, to have measured eotaxin-1 levels (and MDC as well) in ELBW infants. Therefore elevations of these cytokines may have been present in the previously studied cohorts as well, but missed due to non-measurement. The CART method used to generate predictive models for death and/or BPD using cytokines and clinical factors is a rapid, simple and efficient method that is very useful in situations when there is insufficient previous knowledge about relationships between variables under study, a situation that is applicable to our existing knowledge about BPD and its inter-relationship with cytokines.

Eosinophils are best known for their roles in allergy and atopy-related diseases and anti-parasitic defenses, but reports have shown positive correlation between peripheral blood eosinophilia, tissue eosinophilia in airways and alveoli, and eosinophil cationic protein (ECP; a marker for eosinophil activation) with increased risk for BPD (15-19). Such evidence provides a significant context for the primary biologic role of eotaxin – a chemokine and a prominent member of the Th2 cytokine family – a group that is known to be important in the pathogenesis of BPD, especially in the early postnatal period (9). Th2 cytokines that are found in increased concentrations in infants with BPD include IL-13 and TNF- α , both known inducers of eotaxin production through the nuclear factor kappa binding (NF- κ B) pathway (9). IL-8 and MIP-1, two other cytokines shown to be elevated in BAL fluid of infants with BPD (20), are also primarily chemotactic in function. Thus it is possible that Th2 cytokine responses to inflammation could induce the chemotaxis of leukocytes to the lungs and their subsequent activation leading to lung injury and BPD. Eotaxin, as the primary recruiter of eosinophils to this inflammatory process, may play a key role in modulating this lung injury.

Eotaxin increases production of profibrotic cytokines such as TGF- β , MCP-1 and IL-4 by eosinophils, mast cells and neutrophils in bleomycin-induced lung injury (21). Neutrophil influx may regulate inflammatory processes in the lung via eotaxin and other chemokines (22). Eotaxin also induces ROS production and increases oxidant damage in human endothelial cells (23). Thus, eotaxin may play roles in fibrogenesis and oxidant-induced lung damage, pathogenic processes known to occur to BPD. Eotaxin-1 and its major eotaxin receptor, the CCR3 ligand, are found in abundance in the developing lung where their

expression causes increased proliferation and activation of extracellular-signal-regulated kinases (ERK1/2) in mid-trimester lung models (24). Thus, eotaxin may also modulate fetal lung development.

Eotaxin-1 measured on the day of birth is useful for identifying ELBW infants at risk of BPD/death. It is a potent eosinophil chemoattractant and activator, and eosinophilia and eosinophil activation are known to be correlated with severity of BPD. Although eotaxin-1 is not essential for lung development, it regulates airway epithelial proliferation in the developing lung and acute inflammatory lung injury. Additionally, genetic polymorphisms in the eotaxin gene, similar to those known to be involved in determining susceptibility to asthma in multiple populations (25), may also help explain upregulation of eotaxin expression in subgroups of infants and serve as markers of risk for BPD. Further investigation is required to determine if eotaxin-1 is involved in BPD pathogenesis.

Methods

Study design and population

This was a prospective cohort study conducted between 2005 and 2008 at the Regional Newborn Intensive Care Unit of the University of Alabama at Birmingham (UAB), Birmingham, AL. Approval was obtained from the institutional review board at UAB. Infants with birth weights of < 1000 g who survived beyond the first hour of life were eligible for enrollment in the study if informed parental consent could be obtained within the first 24 hours after birth. Therefore, if mothers/caregivers were not available or could not be approached (e.g. mother heavily sedated or very ill) or could not understand the informed consent document (non-English speaking), infants were considered not eligible. We excluded ELBW infants who were known to have congenital anomalies or syndromes.

Clinical data collection

Enrolled infants were followed through their hospital stay until the time of discharge or death. Prenatal, perinatal and postnatal clinical variables were recorded by trained research staff. Clinical variables included birth weight (g), gestational age (w), race, sex, clinical and histologic chorioamnionitis, use of antenatal steroids, Apgar scores at 1 and 5 minutes, early onset sepsis, and late onset sepsis defined as culture positive bacterial infection of blood, urine or cerebrospinal fluid (CSF) that was treated with antibiotics. Respiratory support parameters such as duration of supplemental oxygen therapy and mechanical ventilation provided to infants were also measured. Olsen growth curves (26) were used to stratify infants according to their intrauterine growth status based on birth weight, sex and gestational age.

Cytokine and CRP analysis

Up to 0.2 ml of whole blood sample was collected from enrolled infants within 24 hours of birth. Samples were centrifuged at 5000 rpm for 5 min, and the supernatant serum samples were frozen at -80°C until final analysis. CRP measurements were by ELISA (R&D Systems, Minneapolis, MN). A multiplex Luminex analysis system (Luminex Corporation, Austin, TX) that is commercially available and is able to measure levels of a panel of 39

different cytokines (EMD Millipore, Billerica, MA) was used to measure cytokines (see Table 2). All measurements were reported in pg/ml.

Outcome definitions

The National Institute of Child Health and Human Development (NICHD) physiologic definition was used to identify infants with BPD (27). This method of BPD diagnosis has been well-validated and shown to reduce observer bias. BPD and death by 36 weeks PMA were combined together to form the primary study outcome. Thus, 'cases' included infants who died before 36 weeks or those who survived to 36 weeks PMA but developed BPD. Controls were infants who survived to 36 weeks PMA without BPD.

Statistical analysis

Means with standard deviations (for parametric variables) or medians with ranges (non-parametric variables) were used to summarize continuous variables; proportions were used for categorical variables. Fisher's exact test and chi-square test were used for between-group comparisons of categorical variables. Student's t-test, Mann-Whitney test and Kruskal-Wallis test were used for continuous variables. Stepwise Logistic Regression was used to estimate strength of relationships between categorical outcomes and predictor variables. CRP, cytokines and clinical variables available by 24 hours of life were used to construct a forward stepwise Classification and Regression Tree (CART) analysis to identify early predictors of BPD and/or death using Answertree available in SPSS 2011 (IBM Inc., Chicago, IL). The Classification and Regression Tree (CART) analysis that we used in our study is a robust statistical method that identifies specific levels of various risk factors for a given outcome (say BPD in this instance) by dividing a dataset using recursive partitioning into a classification tree that yields two subgroups – one with a higher proportion of the outcome being tested (cases) and the other with a higher proportion of controls, thereby identifying optimal cutoff points for risk factors in the dataset that allow for such binary division of the given data. All other statistical analyses were carried out with R (R Development Core Team, Vienna, Austria), and Sigmaplot 12.0 (SYSTAT Software, San Jose, CA) was used to generate figures. Two-sided p values less than 0.05 were considered statistically significant. No correction was made for multiple testing in view of the exploratory (hypothesis-generating) nature of these analyses.

Acknowledgments

Statement of financial support: Supported in part by grants from the National Institutes of Health (NIH), Bethesda, MD (R03 HD054420, K08 HD 046513, and R01 HL092096) and the American Thoracic Society (ATS), New York, NY/Pulmonary Hypertension Association (PHA), Silver Spring, MD (ATS PH-06-006)

References

1. Fanaroff AA, Stoll BJ, Wright LL, et al. Trends in neonatal morbidity and mortality for very low birthweight infants. *Am J Obstet Gynecol.* 2007; 196:147.e141–148. [PubMed: 17306659]
2. Bhandari A, Bhandari V. Pitfalls, problems, and progress in bronchopulmonary dysplasia. *Pediatrics.* 2009; 123:1562–1573. [PubMed: 19482769]
3. Check J, Gotteiner N, Liu X, et al. Fetal growth restriction and pulmonary hypertension in premature infants with bronchopulmonary dysplasia. *J Perinatol.* 2013; 33:553–557. [PubMed: 23328924]

4. Koksal N, Kayik B, Cetinkaya M, et al. Value of serum and bronchoalveolar fluid lavage pro- and anti-inflammatory cytokine levels for predicting bronchopulmonary dysplasia in premature infants. *Eur Cytokine Netw.* 2012; 23:29–35. [PubMed: 22591771]
5. Munshi UK, Niu JO, Siddiq MM, Parton LA. Elevation of interleukin-8 and interleukin-6 precedes the influx of neutrophils in tracheal aspirates from preterm infants who develop bronchopulmonary dysplasia. *Pediatr Pulmonol.* 1997; 24:331–336. [PubMed: 9407566]
6. Eklund CM. Proinflammatory cytokines in CRP baseline regulation. *Adv Clin Chem.* 2009; 48:111–136. [PubMed: 19803417]
7. Ambalavanan N, Ross AC, Carlo WA. Retinol-binding protein, transthyretin, and C-reactive protein in extremely low birth weight (ELBW) infants. *J Perinatol.* 2005; 25:714–719. [PubMed: 16208398]
8. Patel RM, Kandefor S, Walsh MC, et al. Causes and timing of death in extremely premature infants from 2000 through 2011. *N Engl J Med.* 2015; 372:331–340. [PubMed: 25607427]
9. Ambalavanan N, Carlo WA, D'Angio CT, et al. Cytokines associated with bronchopulmonary dysplasia or death in extremely low birth weight infants. *Pediatrics.* 2009; 123:1132–1141. [PubMed: 19336372]
10. Leviton A, Allred EN, Yamamoto H, Fichorova RN. Relationships among the concentrations of 25 inflammation-associated proteins during the first postnatal weeks in the blood of infants born before the 28th week of gestation. *Cytokine.* 2012; 57:182–190. [PubMed: 22133344]
11. Carlo WA, McDonald SA, Tyson JE, et al. Cytokines and neurodevelopmental outcomes in extremely low birth weight infants. *J Pediatr.* 201(59):919–925.e913.
12. Yu H, Yuan L, Zou Y, et al. Serum concentrations of cytokines in infants with retinopathy of prematurity. *Apmis.* 2014; 122:818–823. [PubMed: 24479831]
13. Viscardi RM, Muhumuza CK, Rodriguez A, et al. Inflammatory markers in intrauterine and fetal blood and cerebrospinal fluid compartments are associated with adverse pulmonary and neurologic outcomes in preterm infants. *Pediatr Res.* 2004; 55:1009–1017. [PubMed: 15155869]
14. Moncunill G, Aponte JJ, Nhabomba AJ, Dobaño C. Performance of Multiplex Commercial Kits to Quantify Cytokine and Chemokine Responses in Culture Supernatants from *Plasmodium falciparum* Stimulations. *PLoS ONE.* 2013; 8:e52587. [PubMed: 23300981]
15. Yang JY, Cha J, Shim SY, Cho SJ, Park EA. The relationship between eosinophilia and bronchopulmonary dysplasia in premature infants at less than 34 weeks' gestation. *Korean J Pediatr.* 2014; 57:171–177. [PubMed: 24868214]
16. Yamamoto C, Kojima T, Hattori K, et al. Eosinophilia in premature infants: correlation with chronic lung disease. *Acta Paediatr.* 1996; 85:1232–1235. [PubMed: 8922090]
17. Yen JM, Lin CH, Yang MM, Hou ST, Lin AH, Lin YJ. Eosinophilia in very low birth weight infants. *Pediatr Neonatol.* 2010; 51:116–123. [PubMed: 20417463]
18. Brostrom EB, Katz-Salamon M, Lundahl J, Hallden G, Winbladh B. Eosinophil activation in preterm infants with lung disease. *Acta Paediatr.* 2007; 96:23–28. [PubMed: 17187598]
19. Raghavender B, Smith JB. Eosinophil cationic protein in tracheal aspirates of preterm infants with bronchopulmonary dysplasia. *J Pediatr.* 1997; 130:944–947. [PubMed: 9202617]
20. Baier RJ, Loggins J, Kruger TE. Monocyte chemoattractant protein-1 and interleukin-8 are increased in bronchopulmonary dysplasia: relation to isolation of *Ureaplasma urealyticum*. *J Investig Med.* 2001; 49:362–369.
21. Huaux F, Gharaee-Kermani M, Liu T, et al. Role of Eotaxin-1 (CCL11) and CC chemokine receptor 3 (CCR3) in bleomycin-induced lung injury and fibrosis. *Am J Pathol.* 2005; 167:1485–1496. [PubMed: 16314464]
22. Arnon S, Grigg J, Silverman M. Pulmonary inflammatory cells in ventilated preterm infants: effect of surfactant treatment. *Arch Dis Child.* 1993; 69:44–48. [PubMed: 8346953]
23. Jamaluddin MS, Wang X, Wang H, Rafael C, Yao Q, Chen C. Eotaxin increases monolayer permeability of human coronary artery endothelial cells. *Arterioscler Thromb Vasc Biol.* 2009; 29:2146–2152. [PubMed: 19778943]
24. Haley KJ, Sunday ME, Porrata Y, et al. Ontogeny of the eotaxins in human lung. *Am J Physiol Lung Cell Mol Physiol.* 2008; 294:L214–224. [PubMed: 18055844]

25. Batra J, Rajpoot R, Ahluwalia J, et al. A hexanucleotide repeat upstream of eotaxin gene promoter is associated with asthma, serum total IgE and plasma eotaxin levels. In *J Med Genet*, England. 2007;397–403.
26. Olsen IE, Groveman SA, Lawson ML, Reese HC, Babette SZ. New Intrauterine Growth Curves Based on United States Data. *Pediatrics*. 2010; 125(2):e214–24. [PubMed: 20100760]
27. Walsh MC, Wilson-Costello D, Zadell A, Newman N, Fanaroff A. Safety, reliability, and validity of a physiologic definition of bronchopulmonary dysplasia. *J Perinatol*. 2003; 23:451–456. [PubMed: 13679930]

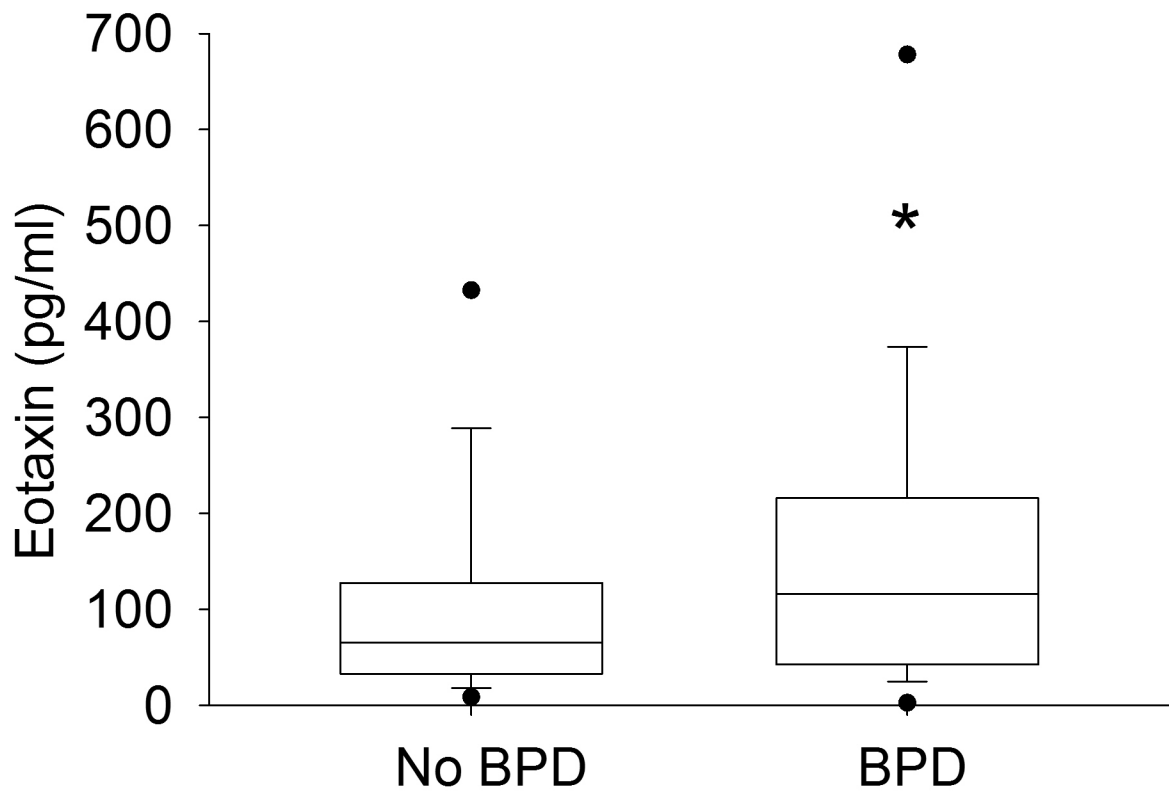


Figure 1.

Serum eotaxin concentrations on postnatal day 1, comparing ELBW infants who survived without BPD to infants who died or develop BPD. Box and whiskers plot indicates median, 25th-75th centiles (lower and upper borders of box), 5th-95th centiles (lower and upper whiskers) and outliers (black dots). *p<0.05 versus “No BPD” group.

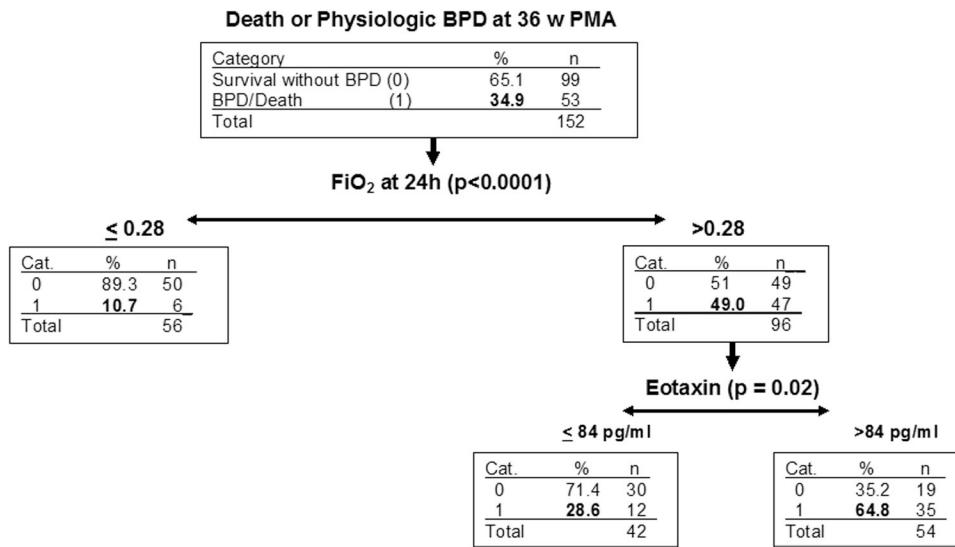


Figure 2. Classification and regression tree model for BPD/death by 36 weeks' post-menstrual age. The percentage of BPD/death at each node is indicated in bold font.

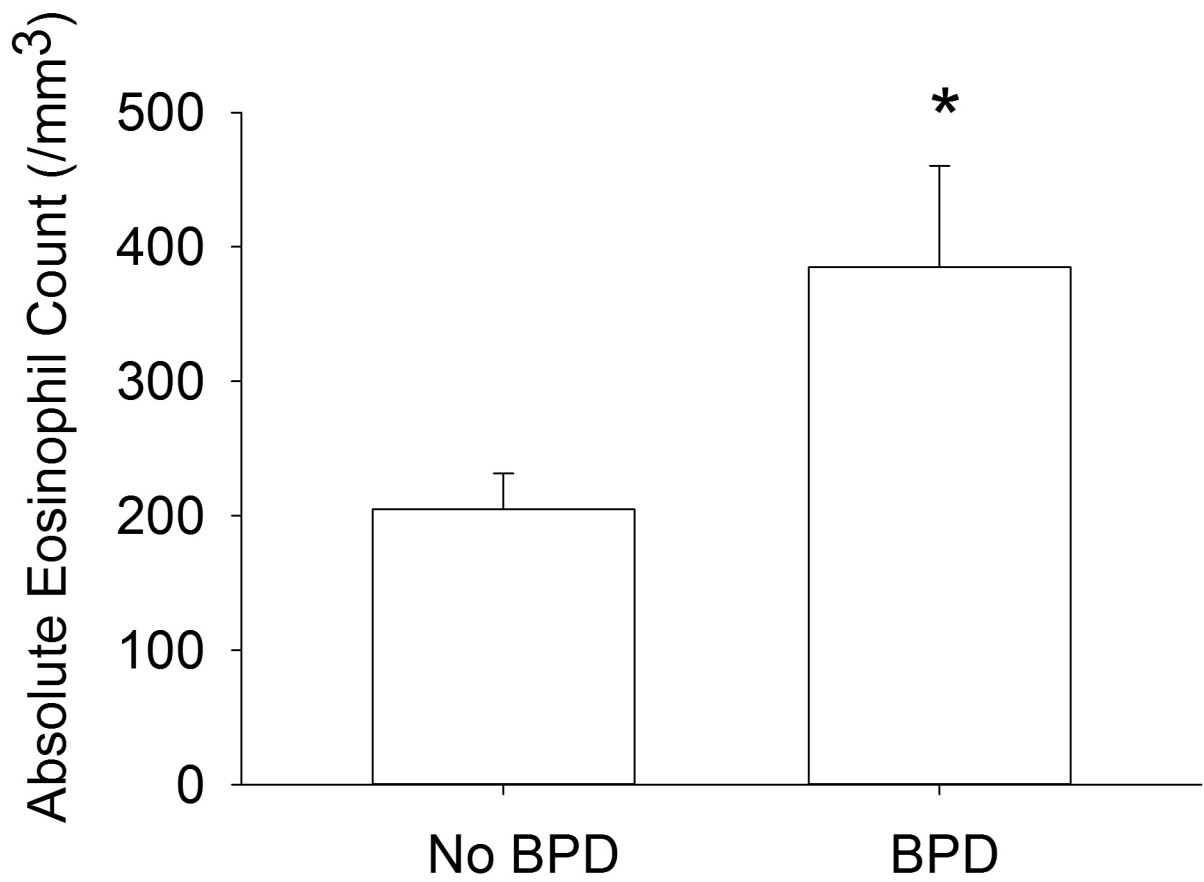


Figure 3. Absolute eosinophil counts on postnatal day 1 in infants who survived without BPD, compared to those who died or developed BPD (mean \pm SEM; * $p < 0.05$ versus “No BPD” group).

Table 1
Clinical characteristics of enrolled infants

Variable	Overall	Survival without BPD	BPD and/or death	<i>p</i> ^a
n (%)	152 (100)	99 (65)	53 (35)	
Birth weight, mean ± SD, g	720 ± 147	753 ± 142	658 ± 136	<0.001
Gestational age, mean ± SD, wk	25.2 ± 2.8	25.3 ± 3.1	25.1 ± 2.0	0.60
Small for gestational age, n (%)	35 (23)	19 (19)	16 (30)	0.12
White ethnicity, n (%)	71 (47)	48 (48)	23 (43)	0.69
Male, n (%)	64 (42)	39 (39)	25 (47)	0.45
Complete course of prenatal steroids, n (%)	82 (54)	62 (63)	20 (38)	0.01
Clinical chorioamnionitis, n (%)	15 (10)	12 (12)	3 (6)	0.32
Histological chorioamnionitis, n (%)	53 (35)	36 (37)	17 (32)	0.64
Use of maternal antibiotics, n (%)	113 (74)	80 (81)	33 (62)	0.02
5-min Apgar scores, median (IQR)	7 (5, 7)	7 (6, 7)	6 (4, 7)	0.01
Intubation at birth, n (%)	89 (59)	50 (51)	39 (74)	0.01
Late onset sepsis, n (%)	63 (41)	33 (33)	30 (57)	0.01
Inhaled nitric oxide use, n (%)	7 (5)	1 (1)	6 (11)	0.01
Mechanical ventilation at 36 weeks PMA, n (%)	9 (6)	2 (2)	7 (13)	0.01
Mechanical ventilation duration by 36 wk PMA, mean ± SD, d	10.2 ± 17.4	7.1 ± 11.9	16.3 ± 23.8	0.002
Oxygen supplementation duration by 36 wk PMA, mean ± SD, d	30.6 ± 30.7	26.2 ± 28.0	39.1 ± 34.0	0.01
FiO ₂ at 36 wk PMA, median (IQR)	21 (21, 21)	21 (21, 21)	25 (21, 39)	0.003
Highest FiO ₂ at 36 wk PMA, median (IQR)	21 (21, 25)	21 (21, 21)	27 (21, 40)	0.001
Absolute Eosinophil Count, median (IQR), cells/μL	140 (43,251)	132(32,251)	18 (79,530)	0.03

^a*P* values were calculated using the following statistical methods: Fisher's exact test for categorical variables, Mann-Whitney test for non-parametric continuous variables and Student's t-test for parametric continuous variables.

Table 2
CRP and serum cytokine concentrations measured on postnatal day 1, stratified according to outcome status

Cytokine	Survival without BPD			BPD and/or death			P
	Median	1 st quartile	3 rd quartile	Median	1 st quartile	3 rd quartile	
CRP	0.22	0.07	1.95	0.44	0.09	1.85	0.40
Eotaxin-1 (CCL11) ^a	48	15.5	105	108	31	194	0.01
GRO	2673	1916	3797	2249	1605	2872	0.07
sCD40L	20501	5200	33375	12991	4719	20900	0.08
EGF	251	135	429	207	141	323	0.44
FGF2	204	134	272	181	112	221	0.23
Flt3L	21	0	94	13	0	104	0.61
Fractalkine	31	0	155	0	0	128	0.35
G-CSF	308	100	1602	238	97	945	0.70
GM-CSF	147	81	232	137	84	272	0.71
IFNA2	117	0	317	179	0	453	0.30
IFN- γ	4	0	9.5	6	0.5	10	0.42
IL-1 α	316	188	465	287	176	523	0.82
IL-1 β	0	0	2	0	0	3	0.80
IL-1Ra	1837	521	3719	1473	345	5922	0.64
IL-2	0	0	1.5	0	0	2	0.48
IL-3	177	77	251	138	95	206	0.49
IL-4	0	0	0	0	0	0	0.58
IL-5	0	0	1	0	0	2	0.91
IL-6	44	18	161	55	19	99	0.97
IL-7	5	0	26	1	0	37	0.95
IL-8	247	132	492	264	146	594	0.51
IL-9	20	6	85	21	7	61	0.80
IL-10	28	9.25	57	42	8.75	91	0.18
IL-12-p40	46	0	190	79	0	188	0.60

Cytokine	Survival without BPD			BPD and/or death			P
	Median	1 st quartile	3 rd quartile	Median	1 st quartile	3 rd quartile	
IL-12-p70 ^b	0	0	3	1	0	6.25	Values too low
IL-13	0	0	0	0	0	0	0.14
IL-15	6	1	15	6	2	17	0.61
IL-17	0	0	1	0	0	1	0.93
IP-10	403	210	640	380	221	789	0.76
MCP-1	2486	1057	5377	2837	1571	5663	0.36
MCP-3	0	0	58	0	0	94	0.31
MIP-1 α	79	0	162	72	3	156	0.84
MIP-1 β	99	50	165	132	74	188	0.14
sIL-2R α	268	190	426	278	173	434	0.74
TGF α	11	0	33	11	0	49	0.34
TNF α	13	6	20	12	7	21	0.85
TNF β	0	0	0	0	0	0	0.45
VEGF	210	103	328	155	75	247	0.23
MDC(CCL22) ^b	826	493	1162	627	30	1001	0.03

All cytokine levels are in pg/mL. All *P* values were calculated using the Mann-Whitney U test.

^a Statistically significant.

^b *P* values were close to threshold of measurement.

Abbreviations: FGF2 - fibroblast growth factor 2, Flt-3L - Fms-like tyrosine kinase 3 ligand, G-CSF - granulocyte colony stimulating factor, GM-CSF - granulocyte macrophage-colony stimulating factor, CXCL1 - CXCL ligand 1, MCP-1 - monocyte chemoattractant protein-1, MDC - macrophage-derived chemokine, MIP-1 α - macrophage inflammatory protein-1 α , sCD40L - surface expressed, sIL-2R α - soluble IL-2R α