

Isolation and characterization of plant growth promoting endophytic bacteria from the rhizome of *Zingiber officinale*

B. Jasim · Aswathy Agnes Joseph · C. Jimtha John · Jyothis Mathew · E. K. Radhakrishnan

Received: 21 March 2013 / Accepted: 16 May 2013 / Published online: 6 June 2013
© The Author(s) 2013. This article is published with open access at Springerlink.com

Abstract Endophytes, by residing within the specific chemical environment of host plants, form unique group of microorganisms. Microbially unexplored medicinal plants can have diverse and potential microbial association. The rhizome of ginger is very remarkable because of its metabolite richness, but the physiological processes in these tissues and the functional role of associated microorganisms remain totally unexplored. Through the current study, the presence of four different endophytic bacterial strains were identified from ginger rhizome. Among the various isolates, ZoB2 which is identified as *Pseudomonas* sp. was found to have the ability to produce IAA, ACC deaminase and siderophore. By considering these plant growth promoting properties, ZoB5 can expect to have considerable effect on the growth of ginger.

Keywords Endophytic bacteria · Indole 3 acetic acid · HPLC · *Pseudomonas* sp. · 16S rDNA sequencing

Introduction

Plants are associated with a diverse community of microorganisms. The microorganisms residing within the plants or endophytes are unique in their adaptations to specific chemical environment of host plant. Even some of these microorganisms are shared genetically with the molecular machinery for the synthesis of plant specific compounds. This makes endophytes to be considered as

untapped source of natural products (Rosenblueth and Martínez-Romero 2006; Strobel 2003). Endophytes also provide advantages to the host plant by producing plant growth regulators, by providing resistance to diseases and also by assisting in phytoremediation (Lodewyckx et al. 2002).

The mechanisms by which endophytes deal with ever-changing environmental conditions may provide better survival advantages to host plants. The evolution of endophytic biochemical pathways for the production of plant growth hormones is very interestingly present in plants (Strobel 2003). Endophytic microorganisms can vary based on the plant source, age, type of tissue, season of sampling, and environment. Generally, the concentration of the endophytic bacteria is more at the root than at shoot tissue (Zinniel et al. 2002). A large number of plant species are shown to be associated with bacteria like *Pseudomonas*, *Bacillus*, *Azospirillum* etc. (Chanway 1996). At the same time various species of bacteria can be associated with specific plants as in the case of rice where bacteria like *Pantoea*, *Azospirillum*, *Methylobacterium*, *Rhizobium*, *Herbaspirillum*, *Burkholderia* etc. are found to be endophytically associated. These bacterial species have been shown to have added contribution to the yield and growth of the rice plants (Mano and Morisaki 2008). Hard wooded trees are also shown to be endophytically associated with bacteria such as *Serratia* sp., *Rahnella* sp., *Pseudomonas* sp., *Stenotrophomonas* sp. etc. (Taghavi et al. 2009). So by considering the remarkable features of ginger rhizome, much diverse and even specific bacterial association can be well expected.

Endophytic bacteria have been reported from wide variety of plants but the functional role is known only with limited number of isolates. One of the major contributions of these microorganisms towards plant growth is the

B. Jasim · A. A. Joseph · C. J. John · J. Mathew · E. K. Radhakrishnan (✉)
School of Biosciences, Mahatma Gandhi University,
Priyadharshini Hills PO, Kottayam Dist, Kerala 686560, India
e-mail: radhakrishnanek@mgu.ac.in

production of auxin-like molecules (Spaepen et al. 2007). Indole 3 acetic acid (IAA) being an auxin can stimulate both rapid responses like cell elongation and long term responses like cell division and differentiation in plants (Taghavi et al. 2009). Indole 3 acetic acid (IAA) is shown to be produced by many root associated bacteria including *Enterobacter* sp., *Pseudomonas* sp., and *Azospirillum* sp. (El-Khawas and Adachi 1999). Due to its important role in plants, the level as well as distribution of IAA in plant tissue and endophytic production of IAA has gained a great deal of attention (Matsuda et al. 2005).

In addition to the IAA production, plant growth promoting bacteria (PGPB) are also shown to exhibit other properties like ACC deaminase, phosphate solubilization, siderophore production, etc. The enzyme ACC deaminase catalyzes degradation of 1-aminocyclopropane-1-carboxylic acid (ACC), the immediate precursor of ethylene, into α -ketobutyrate and ammonia and this in turn reduce the inhibitory effects of elevated level of ethylene. Plant associated bacteria can also have the capability to solubilise non-available phosphate to available form and there by enhance plant growth and yield (de Freitas et al. 1997). Siderophores are iron-chelating agents secreted by some microorganisms under iron-limiting conditions. Siderophore productions by some microorganisms make them successful in surviving several adverse environments and also make the iron limiting to plant pathogens (Miethke and Marahiel 2007).

Thus isolation and characterization of endophytes with diverse properties from unexplored sources will have much applications to manipulate plant growth promotion (Patten and Glick 2002; Sergeeva et al. 2007). In order to explore the promising potential of endophytes, diverse communities of endophytes should be isolated from various tissues of taxonomically diverse and metabolically distinct plants. Plants of Zingiberaceae, especially ginger are well known for the presence of structurally diverse bioactive metabolites including those of the gingerol group (Ramirez-Ahumada Mdel et al. 2006). Also ginger forms a model plant of the family where much interesting and unexplored rhizome specific metabolism is present. In addition to the complex chemical constituents, rhizome is also well known for its ability to survive under adverse conditions (Ramirez-Ahumada Mdel et al. 2006). So many interesting groups of microorganisms with diverse roles in plant physiology can be expected from the rhizome. However the growth promoting properties of endophytic bacteria from ginger has not yet been well studied. So studies on isolation and characterization of endophytic bacteria from ginger is very significant. In the current study four endophytic bacteria were isolated from ginger rhizome and one among the isolates was found to have the ability to produce IAA, ACC deaminase and siderophore.

Materials and methods

Isolation and characterization of endophytic bacteria

Rhizome of ginger (*Zingiber officinale*) was collected from Navajyothisree Karunakara Guru Research Centre for Ayurveda and Siddha, Uzhavoor, Kottayam and was used as the source material for the isolation of endophytic bacteria. The rhizome pieces of *Z. officinale* were washed with tap water to remove soil and were made to 1–2 cm long pieces. This was further treated with Tween 80 for 10 min with vigorous shaking. This was followed by wash with distilled water for several times to remove Tween 80. After the treatment with Tween 80, the samples were dipped in 70 % ethanol for 1 min and then treated with 1 % sodium hypochlorite for 10 min. The samples were then washed several times with sterilized distilled water and the final wash was spread plated onto nutrient agar plate (g/L; peptone 5, beef extract 2, yeast extract 3, sodium chloride 5 and agar 18, pH 7.0) as control. For the isolation of endophytic bacteria, the outer surface of the sterilized plant material was trimmed, the pieces were further macerated in Phosphate buffer saline (PBS) (g/L—sodium chloride 8, potassium chloride 0.2, disodium hydrogen phosphate 1.44 and potassium dihydrogen phosphate 0.24, pH 7.4) and was serially diluted up to 10^{-3} dilution. From this, 0.1 mL was plated onto nutrient agar plates. All plates including the control were incubated at room temperature for 5 days and observed periodically for bacterial growth. Those batches of experiments where the bacterial growth, if any present, in the control plate were completely discarded. Morphologically distinct colonies as identified by colony characters were selected, purified and used for further studies.

Identification of the isolates by 16S rDNA sequencing

Genomic DNA was isolated from all the bacterial isolates and was used as template for PCR. Primers used for the amplification of part of 16S rDNA were 16SF (5'-AgA gTT TgA TCM Tgg CTC-3') and 16SR (5'-AAg gAg gTg WTC CAR CC-3') and were selected based on the previous reports of Chun and Goodfellow (1995). PCR was carried out in a 50 μ L reaction volume containing 50 ng of genomic DNA, 20 pmol of each primer, 1.25 units of Taq DNA polymerase (Bangalore Genei), 200 μ M of each dNTPs and 1X PCR buffer. PCR was carried out for 35 cycles in a MycyclerTM (Bio-Rad, USA) with the initial denaturation at 94 °C for 3 min, cyclic denaturation at 94 °C for 30 s, annealing at 58 °C for 30 s and extension at 72 °C for 2 min with a final extension of 7 min at 72 °C. The PCR product was checked by agarose gel electrophoresis, purified and was further subjected to sequencing. The sequence data was checked by BLAST analysis (Zhang et al. 2000).

The phylogenetic analysis of the 16SrDNA sequences of the isolates obtained in the study was conducted with MEGA 5 using neighbor-joining method with 1,000 bootstrap replicates (Tamura et al. 2011).

Screening of isolates for plant growth promoting properties (PGP)

IAA production

The bacterial isolates were inoculated into 20 mL of nutrient broth supplemented with 0.2 % (v/v) of L-tryptophan and incubated for 10 days at 28 °C. After incubation, the culture was centrifuged at 3,000 rpm for 20 min and the supernatant was used for analysing indole 3 acetic acid production (Rahman et al. 2010). Initially one mL supernatant was mixed with 2 mL of Salkowski reagent and tubes were incubated in dark for 30 min. The development of the red color was observed as the indication for positive result. Uninoculated growth medium was used as negative control. The IAA positive isolates were further inoculated into 200 mL of nutrient broth supplemented with 0.2 % (v/v) of L-tryptophan and incubated for 10 days at 28 °C. After incubation the cell free extract was collected by centrifugation at 3,000 rpm for 20 min. The supernatant was then acidified to pH 2.5–3.0 with 1 N HCl and was extracted twice with ethyl acetate. The extracted ethyl acetate fraction was vacuum dried in a rotary evaporator at 40 °C. The dried powder was dissolved in 1 mL of methanol (MeOH) and stored at –20 °C. For confirmation of presence of IAA, the methanol extract of culture supernatant was subjected to reverse-phase HPLC analysis on a Supelcosil LC-18 column with a flow rate of 1 mL min⁻¹ as described by Jensen et al. (1995). Elution was performed with mixture of H₂O and MeOH (60:40), both containing 0.5 % acetic acid. Elution was monitored at 280 nm by shimadzu UV-Vis Detector model SPD 10A.

ACC deaminase production

The ACC deaminase production of the endophytic bacterial isolates from ginger were screened using the methods described by Jasim et al. (2013). For this, the isolates were inoculated on to DF salts minimal medium (potassium dihydrogen phosphate 4 g/L, disodium hydrogen phosphate 6 g/L, magnesium sulfate heptahydrate 0.2 g/L, ferrous sulfate heptahydrate 0.1 g/L, boric acid 10 µg/L, manganese(II) sulfate 10 µg/L, zinc sulphate 70 µg/L, copper(II) sulfate 50 µg/L, molybdenum (VI) oxide 10 µg/L, glucose 2 g/L, gluconic acid 2 g/L, citric acid 2 g/L, agar 12 g/L) amended with 0.2 % ammonium sulphate (w/v). The bacterial growth in this media after 2 days of incubation was considered as positive result.

Phosphate solubilization

The endophytic bacterial isolates were screened for phosphate solubilization using the procedure described by Jasim et al. (2013). For this, Pikovskaya medium (g/L—glucose 10, tri-calcium phosphate 5, ammonium sulphate 0.5, sodium chloride 0.2, magnesium sulphate heptahydrate 0.1, potassium chloride 0.2, ferrous sulfate heptahydrate 0.002, yeast extract 0.5, manganese (II) sulfate dehydrate 0.002, agar 20, pH 7.0) containing 2.4 mg/mL bromophenol blue was used. The media inoculated with the isolates were incubated for 48 h and was observed for the formation yellow zone around the colony due to the utilization of tricalcium phosphate present in the medium.

Siderophore production

The isolates were checked for the production of siderophores on blue agar CAS medium containing chrome azurol S (CAS) and hexadecyltrimethylammonium bromide (HDTMA) as indicators (Schwyn and Neilands 1987). The blue agar CAS medium was prepared by adding 850 mL of autoclaved MM9 salt medium [added with 32.24 g piperazine-N, N'-bis 2- ethanesulfonic acid (PIPES) at pH 6], 100 mL of blue dye, 30 mL of filter sterilized 10 % Casaminoacid solution and 10 mL of 20 % glucose solution. The blue agar medium was aseptically poured on to sterile plates and allowed to solidify. All the bacterial isolates obtained were inoculated into the CAS medium and incubated at 28 °C for 24 h. Development of yellowish orange halo around the colonies was taken as the indication for the production of siderophore.

Results and Discussion

Fresh and cleaned ginger rhizomes were used for the isolation of endophytic bacteria. The rhizomes were surface sterilized to remove the epiphytic microorganisms. The surface sterilization procedure for the isolation of endophytic bacteria as standardized in the experiment was quite satisfactory as no growth appeared on the control plate. Also, adequate number of colonies obtained in the nutrient agar plates which were inoculated with plant samples macerated in PBS. Based on the distinct colony characteristics, the bacterial isolates obtained were grouped into four and were named as ZoB1–ZoB4. As no microbial growth was observed in control plate, the isolates ZoB1–ZoB4 obtained in the study can be considered as endophytic bacteria of ginger.

Molecular identification of the isolates was done by sequencing part of the 16S rDNA. The amplification of the 16S rDNA was confirmed by agarose gel electrophoresis.

The PCR product was gel eluted and sequenced. The 16S rDNA sequences of the bacterial isolates were submitted to NCBI under the accession numbers as explained in Table 1.

The sequence data of the 16S rDNA was subjected to BLAST analysis. As 16S rDNA gene sequence provide accurate grouping of organism even at subspecies level it is considered as a powerful tool for the rapid identification of bacterial species (Jill and Clarridge 2004). The sequence analysis of 16S rDNA sequences of ZoB1, ZoB2, ZoB3 and ZoB4 showed its maximum identity of 99 % to *Bacillus barbaricus* (JF727665), 99 % to *Pseudomonas putida* (JN596120), 99 % to *Stenotrophomonas maltophilia* (FN645734) and 98 % to *Staphylococcus pasteurii* (JF510533), respectively. Therefore, the isolates ZoB1–ZoB4 can be considered as strains of *Bacillus* sp., *Pseudomonas* sp., *Stenotrophomonas* sp, and *Staphylococcus* sp, respectively (Table 1). The presence of these organisms as endophytes has not been reported from ginger rhizome.

Strains of *P. putida* and *S. maltophilia* were previously reported as endophytes from other plants like *Populus* sp. (Taghavi et al. 2009). *S. pasteurii* strains were previously identified as endophyte from plants like Arabidopsis and Soyabean (Panchal and Ingle 2011). From the comparative analysis, it is very clear that bacteria like *P. putida*, *S. maltophilia*, and *S. pasteurii* are present as endophytes in wide variety of plants. However, *Bacillus barbaricus* was reported as an endo-lithosphere associated bacteria of *Musa* sp. (Thomas and Soly 2009). As information on the presence of *Bacillus barbaricus* as an endophyte is very limited, the presence of related strain as endophyte in ginger rhizome may be taken as an indication of its specific or limited association as an endophyte. Thus, it can be considered that endophytic bacteria present in ginger rhizome, include those species with wide range of host specificity and those with limited distribution. However, the presence these organisms in specific habitat of ginger make them much more interesting. This is because these stains can expect to have strain specific plant growth promoting potential. The phylogenetic analysis of 16S rDNA sequence of the isolates along with the sequences retrieved from the NCBI was carried out with MEGA 5 using the neighbor-joining method with 1,000 bootstrap replicates.

The result of phylogenetic analysis showed distinct clustering of the isolates (Fig. 1).

The culture supernatant of the bacterial isolates ZoB1–ZoB4 were checked for indole 3 acetic acid production calorimetrically. For this, the supernatant of the culture was treated with Salkowski reagent as explained by Rahman et al. (2010). Among the four endophytic isolates, ZoB2 gave positive result for the production of indole 3 acetic acid. The positive reaction was confirmed by comparing this with positive control, which had pure indole 3 acetic acid and a negative control which had uninoculated culture medium. The positive result appeared had a color similar to that of the positive control. Thus, ZoB2 (*Pseudomonas* sp.) was found to have the ability to produce IAA (Table 2). The production of the indole 3 acetic acid was also confirmed by HPLC. For this, the extracts were run on a C18-reversed phase column and absorbance was measured at 280 nm. The pure indole 3 acetic acid produced a peak at 8 min retention time and the crude extract had a predominant peak at the same retention time (Fig. 2). This confirmed the production of indole 3 acetic acid by the bacterial isolate ZoB2 (*Pseudomonas* sp.) from ginger. Even though ZoB1 also showed positive result when treated with Salkowski reagent, the results could not be confirmed by HPLC.

Some endophytic microorganisms have the potential to synthesize IAA. This may be a reason for the increased growth promotion of some plants when the plant is colonized with endophytes (Shi et al. 2009). For the microbial synthesis of IAA in tryptophan-dependent route, tryptophan is used as the precursor. There are different pathways that can lead to tryptophan-dependent microbial production of IAA. The various pathways for IAA biosynthesis include tryptophol, tryptamine, indole-3-pyruvic acid and indole-3-acetamide pathways (Gravel et al. 2007). The ability of the production of IAA different species of *Pseudomonas* was reported by many authors (Karnwal 2009). Even there are reports that suggest the ability of *P. putida* GR12-2, when inoculated on seeds can result in 2–3 fold increase in the length of seedling roots (Glick et al. 1986; Caron et al. 1995).

Even though the presence of *Pseudomonas* sp. as endophyte and its ability to produce IAA has already been

Table 1 16S rDNA sequence analysis of endophytic bacterial isolates from *Zingiber officinale*

Plant material	Endophytic isolate	NCBI accession number	Sequence analysis	
			Closest NCBI database match with accession number	Percentage of identity
Ginger rhizome	ZoB1	JN835212	<i>Bacillus barbaricus</i> JF727665	99
Ginger rhizome	ZoB2	JN835214	<i>Pseudomonas putida</i> JN596120	99
Ginger rhizome	ZoB3	JN835215	<i>Stenotrophomonas maltophilia</i> FN645734	99
Ginger rhizome	ZoB4	JN835216	<i>Staphylococcus pasteurii</i> JF510533	98

Fig. 1 Phylogenetic analysis of 16S rDNA sequences of the bacterial isolates (ZoB1–ZoB4) from ginger along with the sequences from NCBI. The analysis was conducted with MEGA5 using neighbor-joining method

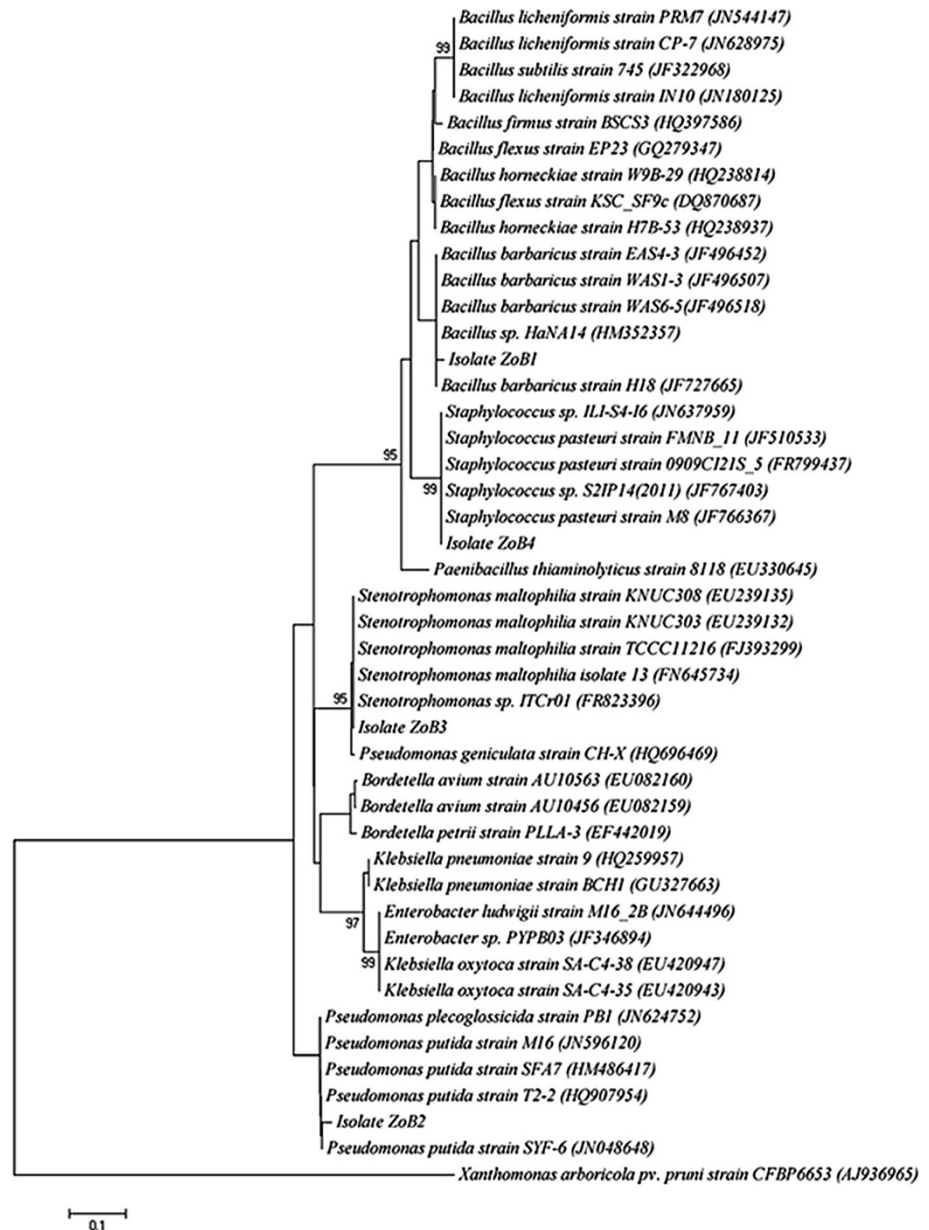


Table 2 Growth promotion capability of the isolated endophytic bacterial isolates

Name of the Isolates	Isolate Identified as	Plant Growth promoting properties			
		Phosphate solubilization	ACC Deaminase	Siderophore production	IAA production
ZoB1	<i>Bacillus sp.</i>	–	–	+	–
ZoB2	<i>Pseudomonas sp.</i>	–	+	+	+
ZoB3	<i>Stenotrophomonas sp.</i>	–	–	+	–
ZoB4	<i>Staphylococcus sp.</i>	–	–	–	–

reported from other plants including both monocot and dicots, its reports from ginger is limited. This makes the present finding much more interesting. The strain of *Pseudomonas sp.* identified in this study can have important growth regulating role in ginger rhizome. The strain

may also have unique features to survive in the unique chemical environment of rhizome under various conditions. Confirmation of this by further experiments may pave the way for exploring the potential application of the isolate in ginger yield enhancement.

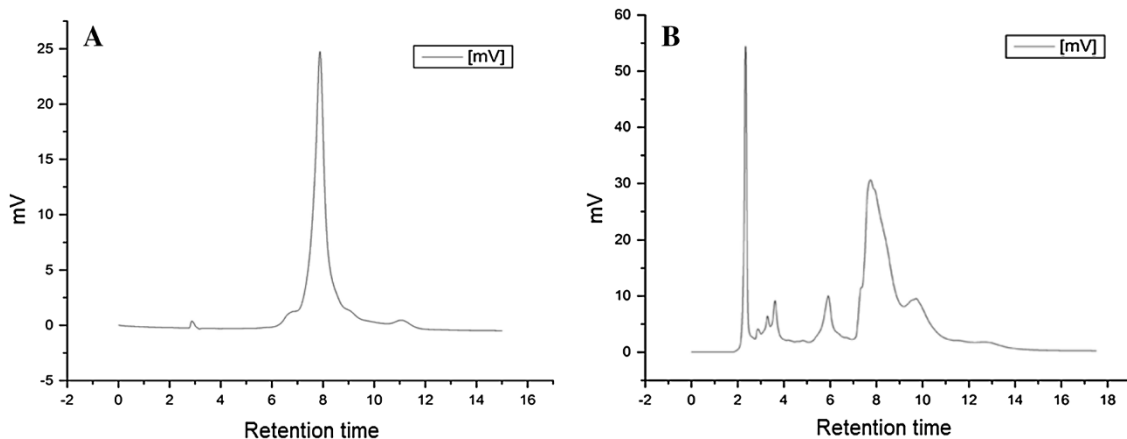


Fig. 2 HPLC analysis carried out using water and methanol, both containing 0.5 % acetic acid in the ratio 60:40 on reversed phase C18 column with a flow rate 1 mL min^{-1} and detected under UV at

280 nm. **a** Positive control (indole 3 acetic acid only), **b** methanolic extract from ZoB2 (*Pseudomonas* sp.)

All the four isolates (ZoB1-ZoB4) were screened for the production of ACC deaminase on DF salts minimal medium amended with 0.2 % ammonium sulphate. ZoB2 (*Pseudomonas* sp.) was found to be positive for ACC deaminase production as indicated by its growth in the media (Table 2). Glick et al. (2007) suggests that some microbes can utilize the ACC as nitrogen source from the exudates of roots or seeds. This decrease in the levels of ACC and ethylene may prevent the ethylene-mediated plant growth inhibition. Endophytic microbes with these capabilities residing inside the host plants can benefit the host by reducing the stress and increasing the plant growth (Har-doin et al. 2008). Alizadeh et al. (2012) has explained the application of the ACC deaminase which has been synthesised by different genera of *Pseudomonas* in increasing the senescence of the plants. The endophytic bacterial isolates were also screened for phosphate solubilization, but the results were negative for all of the isolates.

The endophytic bacterial isolates were screened for siderophore production using the chrome azurol S (CAS) agar. Among the four endophytic isolates, ZoB1 (*Bacillus* sp.), ZoB2 (*Pseudomonas* sp.) and ZoB3 (*Stenotrophomonas* sp.) were found to have the ability to produce siderophore (Table 2). The formation of orange halo around the colonies due to the chelation of iron was the indication for production of siderophore. The formation of orange halo is as a result of the production of siderophore, which removes the iron from the dye complex that changes the color of the medium from blue to orange (Schwyn and Neilands 1987). Siderophores producing bacteria can sequester the limited iron and thereby reduce its availability for growth of phytopathogens. Thus, they enable the plant growth promotion indirectly (Alexander and Zeeber 1991). Different species of *Bacillus* have been reported to have the ability to produce of siderophores even that of petrobactin type (Gardner et al. 2004; Wilson et al. 2010).

Many reports reveals the ability of both gram negative bacterial isolates (*Pseudomonas* sp.) and bacterial genera of *Bacillus* and *Rhodococcus* that belongs to the gram-positive group with the capability to produce siderophores (Tian et al. 2009). Structural studies suggest that there are more than 50 structurally related siderophores like py-overdins, that are produced by different species of *Pseudomonas* (Abdallah 1991; Budzikiewicz 1993). There are various reports that suggest the ability of *Stenotrophomonas maltophilia* to synthesize different types of siderophores using the universal CAS assay method. Chhibber et al. (2008) reported the production of ornibactin type siderophore by *Stenotrophomonas maltophilia* and Ryan et al. (2009) mentioned its ability to produce the catechol type siderophore compound enterobactin based on their recently sequenced genomes.

Conclusion

The results from the study demonstrated the diverse community of endophytic bacteria associated with ginger rhizome. Among these endophytic bacterial isolates obtained, *Pseudomonas* sp. (ZoB2) isolated from the rhizome was found to have the ability to form Indole 3 acetic acid as confirmed by HPLC analysis. The isolate was also found to have the capability to produce ACC deaminase and siderophore which have high impact on growth of the plant. Hence, this isolate can be considered to have growth promoting effect in ginger.

Acknowledgments This study was supported by Department of Biotechnology (DBT), Government of India under DBT-RGYI support scheme.

Conflict of interest The authors declare that they have no conflict of interest in the publication.

Open Access This article is distributed under the terms of the Creative Commons Attribution License which permits any use, distribution, and reproduction in any medium, provided the original author(s) and the source are credited.

References

- Abdallah MA (1991) Pyoverdines and pseudobactins. In: Handbook of Microbial Iron Chelates. Boca Raton, FL, CRC Press, pp 139–153
- Alexander BD, Zeeber DA (1991) Use of chromazulol S to evaluate siderophore production by rhizosphere bacteria. *Biol Fertil Soils* 2:39–54
- Alizadeh O, Sharafzadeh S, Firoozabadi AH (2012) The effect of plant growth promoting rhizobacteria in saline condition. *Asian J Plant Sci* 11:1–8
- Budzikiewicz H (1993) Secondary metabolites from fluorescent pseudomonads. *FEMS Microbiol Rev* 104:209–228
- Caron M, Patten CL, Ghosh S (1995) Effects of plant growth promoting rhizobacteria *Pseudomonas putida* GR-122 on the physiology of canola roots. *Proceedings of the Plant Growth Regulation Society of America* 7:18–20
- Chanway CP (1996) Endophytes: they're not just fungi! *Can J Bot* 74:321–322
- Chhibber S, Gupta A, Sharan R, Gautam V, Ray P (2008) Putative virulence characteristics of *Stenotrophomonas maltophilia*: a study on clinical isolates. *World J Microbiol Biotechnol* 24:2819–2825
- Chun J, Goodfellow M (1995) A phylogenetic analysis of the genus *Nocardia* with 16 s rRNA gene sequences. *Int J Syst Bacteriol* 45:240–245
- de Freitas JR, Banerjee MR, Germida JJ (1997) Phosphate solubilizing rhizobacteria enhance the growth and yield but not phosphorus uptake of canola (*Brassica napus*). *Biol Fertil Soils* 24:358–364
- El-Khawass H, Adachi K (1999) Identification and quantification of auxins in culture media of *Azospirillum* and *Klebsiella* and their effect on rice roots. *Biol Fertil Soils* 28:377–381
- Gardner RA, Kinkade R, Wang C, Phanstiel O (2004) Total synthesis of petrobactin and its homologues as potential growth stimuli for *Marinobacter hydrocarbonoclasticus*, an oil-degrading bacteria. *J Org Chem* 69:3530–3537
- Glick BR, Brooks HE, Pasternak JJ (1986) Physiological effects of plasmid DNA transformation of *Azotobacter vinelandii*. *Can J Microbiol* 32:145–148
- Glick BR, Cheng Z, Czarny J, Duan J (2007) Promotion of plant growth by ACC deaminase-producing soil bacteria. *Eur J Plant Pathol* 119:329–339
- Gravel V, Antoun H, Tweddell RJ (2007) Growth stimulation and fruit yield improvement of greenhouse tomato plants by inoculation with *Pseudomonas putida* or *Trichoderma atroviride*: possible role of indole 3 acetic acid (IAA). *Soil Biol Biochem* 39:1968–1977
- Hardoim PR, van Overbeek LS, van Elsas JD (2008) Properties of bacterial endophytes and their proposed role in plant growth. *Trends Microbiol* 16:463–471
- Jasim B, Jimtha John C, Mathew J, Radhakrishnan EK (2013) Plant growth promoting potential of endophytic bacteria isolated from *Piper nigrum*. *Plant Growth Regul.* doi:10.1007/s10725-013-9802-y
- Jensen JB, Egsgaard H, Van Onckelen H, Jochimsen BU (1995) Catabolism of Indole-3-acetic acid and 4- and 5-Chloroindole-3-acetic acid in *Bradyrhizobium japonicum*. *J Bacteriol* 177:5762–5766
- Jill E, Clarridge III (2004) Impact of 16S rRNA gene sequence analysis for identification of bacteria on clinical microbiology and infectious diseases. *Clin Microbiol Rev* 17:840–862
- Karnwal A (2009) Production of indole acetic acid by fluorescent *Pseudomonas* In the presence of L-tryptophan and rice root exudates. *J Plant Pathol* 91(1):61–63
- Lodewyckx C, Vangronsveld J, Porteous F, Moore ERB, Taghavi S (2002) Endophytic bacteria and their potential applications. *CRC Crit Rev Plant Sci* 21:583–606
- Mano H, Morisaki H (2008) Endophytic bacteria in the rice plant. *Microbes Environ* 23:109–117
- Matsuda F, Miyazawa H, Wakasa K, Miyagawa H (2005) Quantification of indole-3-acetic acid and amino acid conjugates in rice by liquid chromatography-electrospray ionization-tandem mass spectrometry. *Biosci Biotechnol Biochem* 69:778–783
- Miethke M, Marahiel MA (2007) Siderophore-based iron acquisition and pathogen control. *Microbiol Mol Biol Rev* 71:413–451
- Panchal H, Ingle S (2011) Isolation and characterization of endophytes from the root of medicinal plant *Chlorophytum borivilianum* (Safed musli). *J Adv Dev Res* 2:205–209
- Patten CL, Glick BR (2002) Role of *Pseudomonas putida* indoleacetic acid in development of the host plant root system. *Appl Environ Microbiol* 68:3795–3801
- Rahman A, Sitepu IR, Tang S-Y, Hashidoko Y (2010) Salkowski's reagent test as a primary screening index for functionalities of *Rhizobacteria* isolated from wild dipterocarp saplings growing naturally on medium-strongly acidic tropical peat soil. *Biosci Biotechnol Biochem* 74:2202–2208
- Ramirez-Ahumada Mdel C, Timmermann BN, Gang DR (2006) Biosynthesis of curcuminoids and gingerols in turmeric (*Curcuma longa*) and ginger (*Zingiber officinale*): identification of curcuminoid synthase and hydroxycinnamoyl-CoA thioesterases. *Phytochemistry* 67:2017–2029
- Rosenblueth M, Martínez-Romero E (2006) Bacterial endophytes and their interactions with hosts. *Mol Plant Microbe Interact* 19:827–837
- Ryan RP, Monchy S, Cardinale M, Taghavi S, Crossman L, Avison MB, Berg G, van der Lelie D, Dow JM (2009) The versatility and adaptation of bacteria from the genus *Stenotrophomonas*. *Nat Rev Microbiol* 7:514–525
- Schwyn B, Neilands JB (1987) Universal chemical assay for the detection and determination of siderophores. *Anal Biochem* 160(1):47–56
- Sergeeva E, Danielle Hirkala LM, Louise NM (2007) Production of indole-3-acetic acid, aromatic amino acid aminotransferase activities and plant growth promotion by *Pantoea agglomerans* rhizosphere isolates. *Plant Soil* 297:1–13
- Shi Y, Lou K, Li C (2009) Isolation, quantity distribution and characterization of endophytic microorganisms within sugar beet. *Afr J Biotechnol* 8:835–840
- Spaepen S, Vanderleyden J, Remans R (2007) Indole-3-acetic acid in microbial and microorganism-plant Signaling. *FEMS Microbiol Rev* 31:1–24
- Strobel GA (2003) Endophytes as sources of bioactive products. *Microbes Infect* 5:535–544
- Taghavi S, Garafola C, Monchy S, Newman L, Hoffman A, Weyens N, Barac T, Vangronsveld J, van der Lelie D (2009) Genome survey and characterization of endophytic bacteria exhibiting a beneficial effect on growth and development of poplar trees. *Appl Environ Microbiol* 75:748–757
- Tamura K, Peterson D, Peterson N, Stecher G, Nei M, Kumar S (2011) MEGA5: molecular evolutionary genetics analysis using maximum likelihood, evolutionary distance, and maximum parsimony methods. *Mol Biol Evol* 28:2731–2739
- Thomas P, Soly TA (2009) Endophytic bacteria associated with growing shoot tips of banana (*Musa* sp.) cv. Grand Naine and the affinity of endophytes to the host. *Microb Ecol* 58:952–964

- Tian F, Ding Y, Zhu H, Yao L, Du B (2009) Genetic diversity of siderophore-producing bacteria of tobacco rhizosphere. *Brazilian J Microbiol* 40:276–284
- Wilson MK, Abergel RJ, Arceneaux JE, Raymond KN, Byers BR (2010) Temporal production of the two *Bacillus anthracis* siderophores, petrobactin and bacillibactin. *Biometals* 23:129–134
- Zhang Z, Schwartz S, Wagner L, Miller W (2000) A greedy algorithm for aligning DNA sequences. *J Comput Biol* 7:203–214
- Zinniel DK, Lambrecht P, Harris NB, Feng Z, Kuczmariski D, Higley P, Ishimaru CA, Arunakumari A, Barletta RG, Vidaver AK (2002) Isolation and characterization of endophytic colonizing bacteria from agronomic crops and prairie plants. *Appl Environ Microbiol* 68:2198–2208