



A new species of *Anabarhynchus* (Diptera: Therevidae) from an ocean beach in south east Victoria

David J. Ferguson[†], David K. Yeates[†]

[†] Australian National Insect Collection, CSIRO National Facilities & Collections, Canberra, Australia

Corresponding author: David J. Ferguson (david.ferguson@csiro.au)

Academic editor: Torsten Dikow

Received: 05 Sep 2014 | Accepted: 26 Sep 2014 | Published: 30 Sep 2014

Citation: Ferguson D, Yeates D (2014) A new species of *Anabarhynchus* (Diptera: Therevidae) from an ocean beach in south east Victoria. Biodiversity Data Journal 2: e4016. doi: [10.3897/BDJ.2.e4016](https://doi.org/10.3897/BDJ.2.e4016)

ZooBank: [urn:isid:zoobank.org/pub:70CB24F2-022A-454B-A43C-F96F92F8C595](https://urn.isid.zoobank.org/pub:70CB24F2-022A-454B-A43C-F96F92F8C595)

Abstract

Anabarhynchus Macquart 1848 is a large genus of the Therevidae (Diptera) that are endemic to Australasia with a couple of described species from Melanesia. We describe and illustrate *Anabarhynchus oceanus* **sp. n.**, a species found on ocean beaches in eastern Victoria, Australia. The species shares most characters with the monobasic *A. kampmeierae* species group of Lyneborg (2001), but also shares a unique feature of the male genitalia with the endemic New Zealand genus *Megathereva* Lyneborg, 1992. This new species brings the total number of described Australian species in the genus to 113.

Keywords

Taxonomy, diversity, therevine, beach flies, beach ecology

Introduction

Anabarhynchus Macquart 1848 is a large genus of therevine, with over 110 species described from Australia. *Anabarhynchus* is placed in the subfamily Therevinae and is distinguished from other therevine by the presence of the following combination of characters: antennal base positioned low on frons; medial surface of scape without setae; wing cell M₃ open (never stalked); costal setae in 2-4 rows; fore femoral macrosetae usually present; hind femora with *av* macrosetae (rarely absent); post spiracular pile present (rarely absent); mid coxa lacking pile on posterior surface (rarely present); multiple rows of post ocular macrosetae in both sexes; male frons typically broad, rarely narrower than width of ocellar tubercle and never holoptic; male genitalia typically with rounded gonocoxite usually lacking outer gonocoxal processes, inner gonocoxal apodeme present and articulated.

Australia has 112 described species in the genus *Anabarhynchus* (Lyneborg 2001, Ferguson et al. 2013, Ferguson et al. 2014) and New Zealand has 62 species of *Anabarhynchus* and three species of the closely related genus *Megathereva* Lyneborg 1992. The subspecies *A. hyalipennis varicincta* Bigot (1860) is found in New Caledonia and Vanuatu in the New Hebrides (Lyneborg 2001), and the genus is also known from New Guinea (Lyneborg 2001, Winterton 2011). The only other Therevine genus known to occur in the Indonesian archipelago and Papua New Guinea is *Irwinella* Lyneborg 1976, a genus which is diverse in both the Afrotropical and Oriental regions (Winterton 2011, Nagatomi and Lyneborg 1987). *Peralia* Malloch 1932 and *Microthereva* Malloch 1932 from Chile and Argentina are closely related to *Anabarhynchus* and together form the *Anabarhynchus* genus-group which is sister to the rest of the subfamily (Webb 2006, Lambkin et al. 2009).

Throughout the last decade intensive sampling of Therevidae has been conducted in many geographical regions of Australia and has revealed that the true species diversity of *Anabarhynchus* is much higher than that described by Lyneborg (2001). It has become increasingly apparent to us that our understanding of Australian *Anabarhynchus* is still preliminary, and a more robust alignment of species into groups within the genus remains a future goal. A systematic reassessment of Lyneborg's species groups is of a high priority.

Lyneborg revised the Australian *Anabarhynchus* (Lyneborg 2001) recognising 25 species-groups based on some external similarities, though primarily on internal morphology of both the male and female genitalia. We also indicated where *Anabarhynchus oceanus* sp. n. falls in the key by Lyneborg 2001. In the comments we discuss morphological characters that link *A. oceanus* sp. n. and the *A. kampmeierae* species-group, so as to aid in identification. This species is a large and distinctive one, and males have a characteristically modified subepandrial sclerite that may also link the species to *Megathereva* Lyneborg, 1992 from New Zealand.

Anabarhynchus oceanus sp. n. brings the total number of described Australian *Anabarhynchus* to 113.

Materials and methods

Morphological terminology used in this paper follows Mc Alpine (1981) as modified by Winterton et al. (1999) and Winterton (2006). Terms mesonotum and sternopleuron used by Lyneborg (2001) are replaced with the terms scutum and katepisternum, respectively, throughout.

Descriptions are based on the holotype, and variations within the species are provided in a section of the descriptive text titled 'variation', including differences found in the non-holotype sex. Frons width is determined by the width of the frons (*fw*, Fig. 1a) directly in front of the anterior ocellus, divided by the width of the anterior ocellus (*ao*, Fig. 1a). The comparative length of the scape is compared to the length of the pedicel, measured along the outer lateral surface. 'Flagellar style' used by Lyneborg (2001) to describe the 2nd and 3rd flagellomeres is not used here, instead we use the latter terms. Epandrium length is measured along the midline, even though the epandrium of all species is apically emarginate. See Lyneborg (2001) for diagrammatic positions of morphological characters.

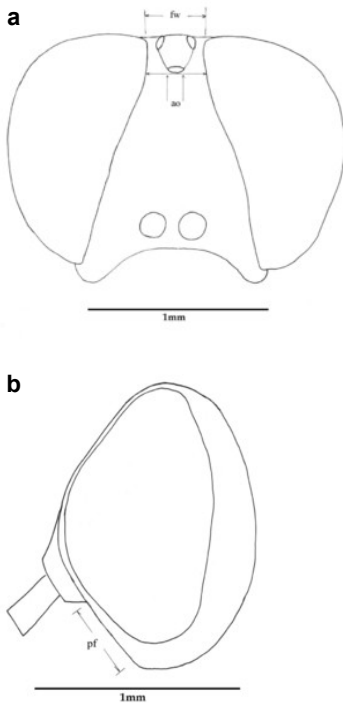


Figure 1.

Typical *Anabarhynchus* head, anterior and lateral view.

a: Frons width is determined by the width of the frons (*fw*) directly in front of the anterior ocellus, divided the width of the anterior ocellus (*ao*).

b: Indicating the position of parafacial (*pf*).

Terminalia of both male and female were macerated in 10% KOH at 50°C for one hour to dissolve soft tissue; neutralised with acetic acid, rinsed in distilled water, and then dissected in 80% ethanol. Female dissections were made to examine and illustrate sternite 8 and the furca. Preparations were placed in glycerol and figures drawn with the aid of a camera lucida mounted on a Zeiss Stemi SV 11 stereo-microscope. Genitalia preparations are stored in glycerol in a genitalia vial mounted on the pin beneath the specimen.

Collection Acronym: ANIC, Australian National Insect Collection, CSIRO National Facilities & Collections, Canberra, Australia; MEIC, M. E. Irwin Collection, Tucson, AZ, USA. Collection Database Numbers: ANIC_29:##### <http://anic.ento.csiro.au/database/index.aspx>; MEIC, Mandala Database; MEL_##### <http://www.inhs.illinois.edu/research/mandala/>

Abbreviations: *ab*, anterior beam; *ao*, anterior ocellus; *ap.s*, appendicular sacs; *avl*, anteroventral lobe; *c*, cercus; *d*, distiphallus; *da*, dorsal apodeme of parameral sheath; *dc*, dorsocentral macrosetae; *ea*, ejaculatory apodeme; *fca*, furca; *fg1*, 1st flagellomere; *fg2*, 2nd flagellomere; *fg3*, 3rd flagellomere; *fw*, frons width; *ga*, gonocoxal apodeme; *gs*, gonostylus; *h*, hypandrium; *hp*, hypoproct; *igp*, inner gonocoxal process; *is*, internal strut; *lea*, lateral ejaculatory; *np*, notopleural macrosetae; *og*, outer gonocoxal process; *pa*, post alar macrosetae; *pd*, posterodorsal; *pf*, parafacial; *sa*, supra-alar macrosetae; *sc*, scutellar macrosetae; *sep*, subepandrial plate; *spa*, spermatheca; *spl.s.d*, spermathecal sac duct; *spl.s*, spermathecal sac; *va*, ventral apodeme of parameral sheath; *vl*, ventral lobe.

Taxon treatment

Anabarhynchus oceanus Ferguson & Yeates 2014, sp. n.

- ZooBank urn:lsid:zoobank.org:act:3C8185ED-891A-46BB-87AA-AD5D6861CFE7

Materials

Holotype:

- a. country: Australia; stateProvince: Victoria; verbatimLocality: Mallacoota, Betka Beach; verbatimLatitude: 37°35'11.12"S; verbatimLongitude: 149°44'16.65"E; samplingProtocol: hand net; startDayOfYear: 27 Oct; endDayOfYear: 01 Nov; year: 2013; individualCount: 1; sex: Male; catalogNumber: ANIC_29:032452; recordedBy: D.J. & R.L. Ferguson; institutionCode: ANIC; collectionCode: ANIC; basisOfRecord: pinned specimen, stainless steel pin dorsally through thorax.

Paratypes:

- a. country: Australia; stateProvince: Victoria; verbatimLocality: Mallacoota, Betka Beach; verbatimLatitude: 37°35'11.12"S; verbatimLongitude: 149°44'16.65"E; samplingProtocol: hand net; startDayOfYear: 27 Oct; endDayOfYear: 1 Nov; year: 2013; individualCount: 1; sex: male; catalogNumber: ANIC_29:032453; recordedBy: D.J. & R.L. Ferguson; institutionCode: ANIC; collectionCode: ANIC; basisOfRecord: pinned specimen, stainless steel dorsally through thorax.
- b. country: Australia; stateProvince: Victoria; verbatimLocality: Mallacoota, Betka Beach; verbatimLatitude: 37°35'11.12"S; verbatimLongitude: 149°44'16.65"E; samplingProtocol:

- hand net; startDayOfYear: 27 Oct; endDayOfYear: 1 Nov; year: 2013; individualCount: 1; sex: male; catalogNumber: ANIC_29:032454; recordedBy: D.J. & R.L. Ferguson; institutionCode: ANIC; collectionCode: ANIC; basisOfRecord: pinned specimen, stainless steel dorsally through thorax.
- c. country: Australia; stateProvince: Victoria; verbatimLocality: Mallacoot, Betka Beach; verbatimLatitude: 37°35'11.12"S; verbatimLongitude: 149°44'16.65"E; samplingProtocol: hand net; startDayOfYear: 27 Oct; endDayOfYear: 1 Nov; year: 2013; individualCount: 1; sex: male; catalogNumber: ANIC_29:032455; recordedBy: D.J. & R.L. Ferguson; institutionCode: ANIC; collectionCode: ANIC; basisOfRecord: pinned specimen, stainless steel dorsally through thorax.
- d. country: Australia; stateProvince: Victoria; verbatimLocality: Mallacoot, Betka Beach; verbatimLatitude: 37°35'11.12"S; verbatimLongitude: 149°44'16.65"E; samplingProtocol: hand net; startDayOfYear: 27 Nov; endDayOfYear: 1 Dec; year: 2012; individualCount: 1; sex: male; catalogNumber: ANIC_29:032456; recordedBy: D.J. & R.L. Ferguson; institutionCode: ANIC; collectionCode: ANIC; basisOfRecord: pinned specimen, stainless steel dorsally through thorax.
- e. country: Australia; stateProvince: Victoria; verbatimLocality: Mallacoot, Betka Beach; verbatimLatitude: 37°35'11.12"S; verbatimLongitude: 149°44'16.65"E; samplingProtocol: hand net; startDayOfYear: 27 Nov; endDayOfYear: 1 Dec; year: 2012; individualCount: 1; sex: male; catalogNumber: ANIC_29:032457; recordedBy: D.J. & R.L. Ferguson; institutionCode: ANIC; collectionCode: ANIC; basisOfRecord: pinned specimen, stainless steel dorsally through thorax.
- f. country: Australia; stateProvince: Victoria; verbatimLocality: Mallacoot, Betka Beach; verbatimLatitude: 37°35'11.12"S; verbatimLongitude: 149°44'16.65"E; samplingProtocol: hand net; startDayOfYear: 27 Nov; endDayOfYear: 1 Dec; year: 2012; individualCount: 1; sex: female; catalogNumber: ANIC_29:032458; recordedBy: D.J. & R.L. Ferguson; institutionCode: ANIC; collectionCode: ANIC; basisOfRecord: pinned specimen, stainless steel dorsally through thorax.
- g. country: Australia; stateProvince: Victoria; verbatimLocality: Mallacoot, Betka Beach; verbatimLatitude: 37°35'11.12"S; verbatimLongitude: 149°44'16.65"E; samplingProtocol: hand net; startDayOfYear: 27 Oct; endDayOfYear: 1 Nov; year: 2013; individualCount: 1; sex: female; catalogNumber: ANIC_29:032459; recordedBy: D.J. & R.L. Ferguson; institutionCode: ANIC; collectionCode: ANIC; basisOfRecord: Pinned specimen, stainless steel dorsally through thorax.
- h. country: Australia; stateProvince: Victoria; verbatimLocality: Mallacoot, Betka Beach; verbatimLatitude: 37°35'11.12"S; verbatimLongitude: 149°44'16.65"E; samplingProtocol: hand net; startDayOfYear: 27 Oct; endDayOfYear: 1 Nov; year: 2013; individualCount: 1; sex: female; catalogNumber: ANIC_29:032460; recordedBy: D.J. & R.L. Ferguson; institutionCode: ANIC; collectionCode: ANIC; basisOfRecord: pinned specimen, stainless steel dorsally through thorax.
- i. country: Australia; stateProvince: Victoria; verbatimLocality: Mallacoot, Betka Beach; verbatimLatitude: 37°35'11.12"S; verbatimLongitude: 149°44'16.65"E; samplingProtocol: hand net; startDayOfYear: 27 Oct; endDayOfYear: 1 Nov; year: 2013; individualCount: 1; sex: female; catalogNumber: ANIC_29:032461; recordedBy: D.J. & R.L. Ferguson; institutionCode: ANIC; collectionCode: ANIC; basisOfRecord: pinned specimen, stainless steel dorsally through thorax.
- j. country: Australia; stateProvince: Victoria; verbatimLocality: Mallacoot, Beka Beach; verbatimLatitude: 37°35'11.12"S; verbatimLongitude: 149°44'16.65"E; samplingProtocol: hand net; startDayOfYear: 27 Nov; endDayOfYear: 1 Dec; year: 2012; individualCount: 1; sex: female; catalogNumber: ANIC_29:032462; recordedBy: D.J. & R.L. Ferguson;

- institutionCode: ANIC; collectionCode: ANIC; basisOfRecord: pinned specimen, stainless steel dorsally through thorax.
- k. country: Australia; stateProvince: Victoria; verbatimLocality: Mallacoota, Betka Beach; verbatimLatitude: 37°35'11.12"S; verbatimLongitude: 149°44'16.65"E; samplingProtocol: hand net; startDayOfYear: 27 Oct; endDayOfYear: 1 Nov; year: 2013; individualCount: 1; sex: female; catalogNumber: ANIC_29:032463; recordedBy: D.J. & R.L. Ferguson; institutionCode: ANIC; collectionCode: ANIC; basisOfRecord: pinned specimen, stainless steel dorsally through thorax.
- l. country: Australia; stateProvince: Victoria; verbatimLocality: Mallacoota, Betka Beach; verbatimLatitude: 37°35'11.12"S; verbatimLongitude: 149°44'16.65"E; samplingProtocol: hand net; startDayOfYear: 27 Oct; endDayOfYear: 1 Nov; year: 2013; individualCount: 1; sex: female; catalogNumber: ANIC_29:032464; recordedBy: D.J. & R.L. Ferguson; institutionCode: ANIC; collectionCode: ANIC; basisOfRecord: pinned specimen, stainless steel dorsally through thorax.
- m. country: Australia; stateProvince: Victoria; verbatimLocality: Mallacoota, Betka Beach; verbatimLatitude: 37°35'11.12"S; verbatimLongitude: 149°44'16.65"E; samplingProtocol: hand net; startDayOfYear: 27 Oct; endDayOfYear: 1 Nov; year: 2013; individualCount: 1; sex: female; catalogNumber: ANIC_29:032465; recordedBy: D.J. & R.L. Ferguson; institutionCode: ANIC; collectionCode: ANIC; basisOfRecord: pinned specimen, stainless steel dorsally through thorax.
- n. country: Australia; stateProvince: Victoria; verbatimLocality: Mallacoota, Betka Beach; verbatimLatitude: 37°35'11.12"S; verbatimLongitude: 149°44'16.65"E; samplingProtocol: hand net; startDayOfYear: 27 Oct; endDayOfYear: 1 Nov; year: 2013; individualCount: 1; sex: female; catalogNumber: ANIC_29:032466; recordedBy: D.J. & R.L. Ferguson; institutionCode: ANIC; collectionCode: ANIC; basisOfRecord: pinned specimen, stainless steel dorsally through thorax.
- o. country: Australia; stateProvince: Victoria; verbatimLocality: Mallacoota, Betka Beach; verbatimLatitude: 37°35'11.12"S; verbatimLongitude: 149°44'16.65"E; samplingProtocol: hand net; startDayOfYear: 27 Nov; endDayOfYear: 1 Dec; year: 2012; individualCount: 1; sex: female; catalogNumber: ANIC_29:032467; recordedBy: D.J. & R.L. Ferguson; institutionCode: ANIC; collectionCode: ANIC; basisOfRecord: pinned specimen, stainless steel dorsally through thorax.
- p. country: Australia; stateProvince: Victoria; verbatimLocality: Mallacoota, Betka Beach; verbatimLatitude: 37°35'11.12"S; verbatimLongitude: 149°44'16.65"E; samplingProtocol: hand net; startDayOfYear: 27 Nov; endDayOfYear: 1 Dec; year: 2012; individualCount: 1; sex: female; catalogNumber: ANIC_29:032468; recordedBy: D.J. & R.L. Ferguson; institutionCode: ANIC; collectionCode: ANIC; basisOfRecord: pinned specimen, stainless steel dorsally through thorax.
- q. country: Australia; stateProvince: Victoria; verbatimLocality: Mallacoota, Betka Beach; verbatimLatitude: 37°35'11.12"S; verbatimLongitude: 149°44'16.65"E; samplingProtocol: hand net; startDayOfYear: 27 Nov; endDayOfYear: 1 Dec; year: 2012; individualCount: 2; sex: male & female (in-coup); catalogNumber: ANIC_29:032469; recordedBy: D.J. & R.L. Ferguson; institutionCode: ANIC; collectionCode: ANIC; basisOfRecord: micro pinned laterally into pith block on single stainless steel pin.

Description

Male. Body Length: 11 mm; Wing Length: 11 mm; (Figs 2, 3, 4, 5) *Head*. Frons bulging; width at anterior ocellus 5.7 x ocellus; face and lower frons protruding; parafacial (*pf*, Fig. 1b) grey with sparse white pile; area lateral to antennal base with white pile; lower

frons grey transitioning to yellow grey on mid and upper frons. Frontal pale brown, admixed with lesser amounts of erect dark pile, equal in length to scape. Scape and pedicel grey; scape 2.9 x pedicel length with strong black setae admixed with lesser pale on ventral surface; *fg1* blackish grey with short black setae around basal third; *fg2* & *fg3* black, one third length of *fg1*. Occiput convex with several indistinct rows of black macrosetae, pubescence yellowish grey; 47 setae on each side; postocciput area to gena grey with long, white, hair-like pile. Palp grey with long pale pile.

Thorax. Scutal chaetotaxy (pairs): *np*, 5; *sa*, 2; *pa*, 1; *dc*, 4-5; *sc*, 2, all black; Scutum with a pair of distinctive grey vittae on a pale brown ground, medially with a dark brown dorsal line that is finely tapered anteriorly; scutal surface with short pale, erect hairs on grey vittae and short black, erect hairs on dark brown dorsal line. Katepisternum with a few hairs dorsocentrally; prosternal furrow without pile; pleura grey; coxae grey with long, hair-like pile admixed with pale macrosetae; hind-coxa knob reduced. *Wing*. Slightly opaque, veins dark brown with brown infusate along the basal *CuA1* vein, to the *m-cu* cross-vein; *M1+2*, distal of *r-m* cross-vein and along *R4+5* and *R5* veins with brown infusate; stigma dark brown; costal setae beyond humeral cross-vein biserially arranged with the occasional additional singular setae outside rows. *Halter*. Pedicel blackish grey; knob pale brown ventrally, dark grey dorsally. *Legs*. Fore and middle femora without macrosetae; hind femur with 1-2 av macrosetae; all femora pale brown with grey pubescence; all tibia and tarsi pale-brown overlain with grey pubescence.



Figure 2.

Anabarhynchus oceanus sp. n., Holotype male (ANIC_29: 032452): lateral view.



Figure 3.

Anabarhynchus oceanus sp. n., Holotype male, (ANIC_29: 032452): oblique view.



Figure 4.

Anabarhynchus oceanus sp. n., female habitus; note patch of appressed black pile on tergite 4 indicated by white arrow [photo: D.J. Ferguson].

Abdomen. Integument black; all tergites covered with dense grey pubescence; lateral areas of tergites with dark brown blotches; surfaces covered with appressed and erect pale pile; sternites similar to tergites, without brown blotches. *Terminalia.* Paratype male (ANIC_29:032467): Epandrium (Fig. 5a), slightly longer than wide; tapered towards posterior, length approximately 2/3 width, anterior margin relatively flat, posterior margin emarginate medially; cercus tapered posteriorly with rounded apex, evenly distributed with pale setae; epandrium lateral edge with darkly sclerotised inwardly directed lobe, broadest anteriorly, tapered posteriorly; subepandrial plate, posterolateral corner with dark sclerotised, dorsoventrally folded process, forming a slightly concave anterior surface, ventral edge raised as a ridge. Gonocoxite rounded (Fig. 5b), with strong pale macrosetae; outer gonocoxal process posteriorly directed, slightly longer than wide; hypandrium strong, medially with broad triangular sclerite; gonocoxal apodeme darkly sclerotised. Inner gonocoxal process as long as outer gonocoxal process when viewed dorsally, strongly curved inward and tapered apically, a row of weak pale pile along dorsal surface of the apical half. Gonostylus directed inward and posteriorly, basal and medial dorsal surface with long pale setae directed inward and dorsally apex spatulas and reflexed dorsally. Ventral lobe darkly sclerotised, tapered to a sharp apex. Aedeagus (Fig. 5c); distiphallus ventrally directed; parameral sheath moderately sclerotised; ventral apodeme broadly flared, slightly projecting anteromedially, midline ventrally with thin flared ridge; lateral ejaculatory apodeme dark sclerotised; ejaculatory apodeme laterally flared, apical edge dark sclerotised.

Variation. Frontal pile variable ranging from all pale brown to nearly all black. Katepisternum pile varies from only several hairs on the dorsal area to none at all. *Male.* Body length: 11-11.5 mm. Wing length: 10.5 mm; wing range from relatively clear to slightly opaque. Frons width at anterior ocellar 5.1-6.1 x ocellar; occipital macrosetae 44-54 each side. *Female.* Body length: 12-13 mm. Wing length: 10.5-11 mm. Frons width at anterior ocellar 4.6-7 x ocellar; occipital macrosetae 34-42 each side; tergites 4 dorsolateral with a patch of long, appressed, black setae (white arrow, Fig. 4). *Terminalia.* Paratype female (ANIC_29:032468): sternite 8 (Fig. 5d): roundish in shape; anterior edge with broad cleft; anterior half darkly sclerotised, raised medially; patches of strong black setae along the posterolateral margin of raised area; weak pale setae distributed broadly medially, and on the posterior half of the dark sclerotised areas and marginally on the pale sclerotised regions; posterior mid-line poorly sclerotised; posterolaterally with broad pale areas tapering anteromedially. Furca (Fig. 5e): posterior frame weak; frame medially broad, dark sclerotised, lateral edge lobed and dorsally directed; anteroventral lobe large and broad and extending half-length of frame. Female internal organs (Fig. 5e): spermatheca (*spa*, Fig. 5f) subspherical; spermathecal sac duct (*spl.d*, Fig. 5f) long and narrow; apex enlarged, and connecting to large, subspherical, spermathecal sac (*spl.s*, Fig. 5f) and two appendicular sacs (*ap.s*, Fig. 5f).

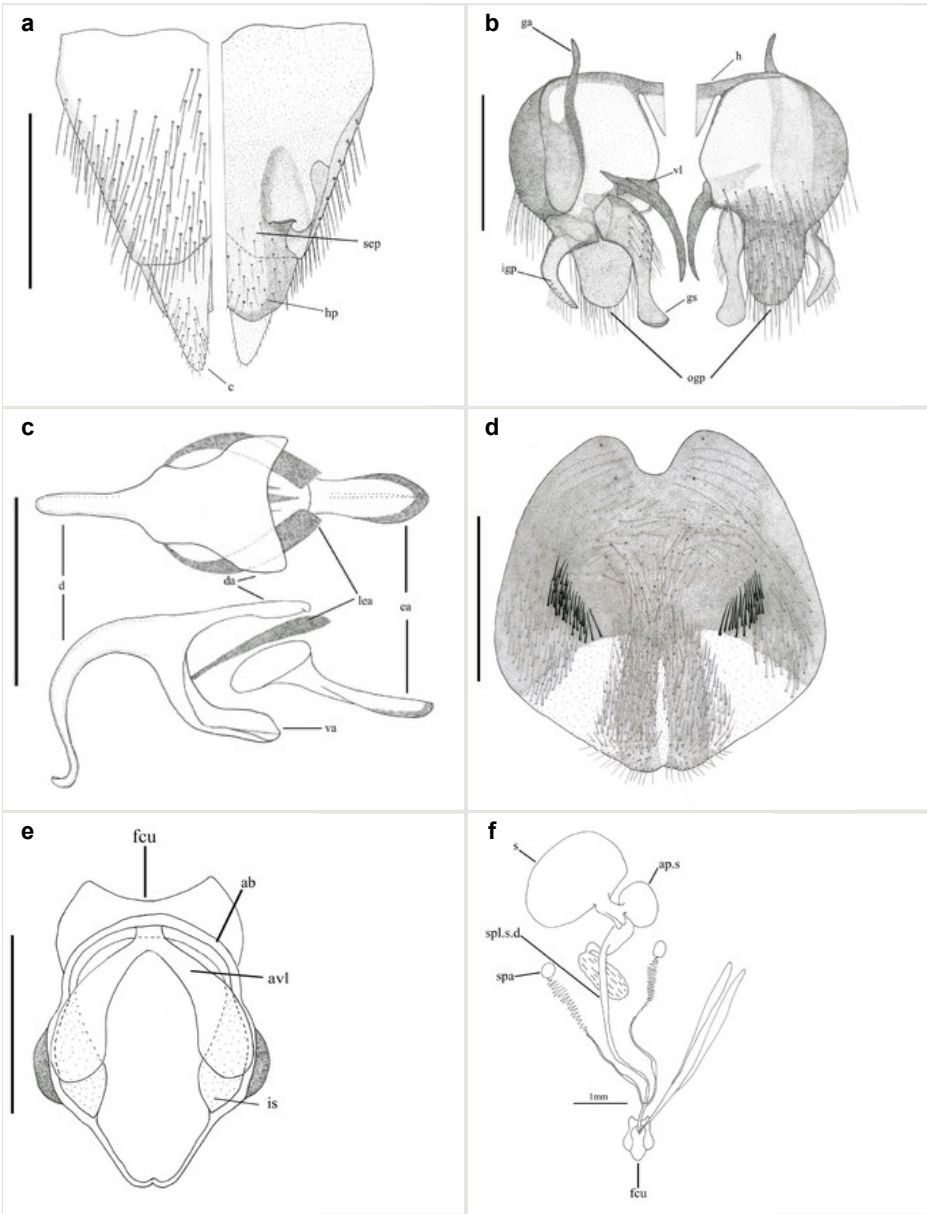


Figure 5.

Anabarhynchus oceanus sp. n., paratype male terminalia (ANIC_29:032467) and paratype female (ANIC_29:032468).

a: Epandrium, left dorsal view, right ventral view.

b: Gonocoxite, left dorsal view, right ventral view.

c: Aedeagus, dorsal view (upper), and lateral view (lower).

d: Female sternite 8, ventral surface.

e: Female furca.

f: Female internal organs.

Diagnosis

Frons bulging; frontal pile pale admixed with fewer black hairs, as long as scape, semi-erect; parafacial and area lateral to antennal base with pale pile. Scutum with a pair of distinctive grey vittae on a pale brown ground, medially with a dark brown dorsal line tapered towards anterior; coxal macrosetae pale. Female sternite 8 subspherical with broad pale areas posterolaterally and extending medially; frame of furca medially broad, anteroventral lobe large, extending half the length of the frame. Male epandrium with a modification to the subepandrial plate forming a dorsoventral wall towards posterolateral corner; ventral lobes of epandrium narrow and distinctively elongate.

Etymology

The species epithet '*oceanus*' is derived from ocean beaches where the *type* specimens were collected.

Discussion

This species is known only from a series of 22 specimens collected between October and early December on Betka Beach, eastern Victoria. Adults were also observed along other ocean beaches in the same area.



Figure 6.

Anabarhynchus kampmeierae Irwin & Lyneborg (MEI_126727): male, lateral view.

Anabarhynchus oceanus sp. n. runs to couplet 4 in Lyneborg (2001) species key, however has pale pile on the parafacial, rather than black. The external morphology of *A. oceanus* sp. nov. is very similar to that of *A. kampmeierae* (Fig. 6) and could be misidentified, except for the following differences. The black postocular setae number 46-48 on each side (12-15 in *A. kampmeierae*); the fore femur is without macrosetae (1*pd* macroseta in *A. kampmeierae*); the katapisternum lacks or has only a few hairs on the dorsocentral area (numerous hairs on both ventral and dorsal surfaces in *A. kampmeierae*), and the prosternal furrow is without pile (with pile in *A. kampmeierae*). In the female, tergite 4 has a dense arrangement of appressed, long black hairs (Fig. 4; white arrow) that are lacking in *A. kampmeierae*.

The presence of white pile on the parafacial of *A. oceanus* sp. n. is consistent with the *A. kampmeierae* species-group. However *A. oceanus* sp. n. lacks a dome-shaped posterior lobe on the sternite 8, found in the *A. kampmeierae* group.



Figure 7.

Megathereva albopilosa Lyneborg (MEI_156193): female, lateral view.

Our ongoing studies of *Anabarhynchus* show that new species do not fall neatly into the species groups defined by Lyneborg (2001). It is likely that species groups will need to be redefined as the fauna becomes better known. *Anabarhynchus oceanus* sp. n. appears to be most closely allied with the monobasic *A. kampmeierae* species-group as currently defined. *Anabarhynchus oceanus* sp. n. is also similar in habit to the related New Zealand genus *Megathereva* (Fig. 7) and shares a uniquely modified subepandrial plate with this genus. This may be evidence of an ancient Mesozoic Gondwanan connection between

Australia and New Zealand, or evidence of more recent dispersal between Australia and New Zealand. These two possibilities could be distinguished using molecular divergence time analyses as has been published recently by Lessard et al. (2013) for the scionine Tabanidae.

Acknowledgements

We thank Chris Manchester, CSIRO National Facilities & Collections for preparing the photographic images, scanning and labelling the drawings and the reviewers of this MS. We also thank the Victorian Department of Sustainability for collecting permits.

References

- Bigot JMF (1860) Diptères exotiques nouveaux. Annales de la Société Entomologique de France 3 (8): 218-228. [In French]. DOI: <http://dx.doi.org/10.5962/bhl.title.15792>
- Ferguson DJ, Irwin ME, Yeates DK (2013) New species of *Anabarhynchus* Macquart (Diptera: Therevidae) from arid and monsoonal tropical Australia. Zootaxa 3680 (1): 055-095. [In English]. DOI: <http://dx.doi.org/10.11646/zootaxa.3680.1.6>
- Ferguson DJ, Lambkin CL, Yeates DK (2014) Eight new species of Australian stiletto flies in the genus *Anabarhynchus* Macquart (Diptera: Therevidae) from South East Queensland. Zootaxa 3802 (4): 553-582. [In English]. DOI: <http://dx.doi.org/10.11646/zootaxa.3802.4.7>
- Lambkin CL, Trueman JW, Yeates DK, Holston KC, Webb DW, Hauser M, Metz MA, Hill HN, Skevington JH, Yang L, Irwin ME, Wiegmann BM (2009) Supertrees and the Tree of Life: Generating a metaphylogeny for a diverse invertebrate family (Insecta: Diptera: Therevidae) using constraint trees and the parsimony ratchet to overcome low taxon overlap. Invertebrate Systematics 23: 171-191. [In English]. DOI: <http://dx.doi.org/10.1071/is08035>
- Lessard BD, Cameron SL, Bayless KM, Wiegmann BM, Yeates DK (2013) The evolution and biogeography of the austral horse fly tribe *Scionini* (Diptera: Tabanidae: Pangoniinae) inferred from multiple mitochondrial and nuclear genes. Molecular Phylogenetics and Evolution 68: 516-540. [In English]. URL: <http://www.ncbi.nlm.nih.gov/pubmed/23665038>
- Lyneborg L (1976) A revision of the therevine stiletto-flies (Diptera: Therevidae) of the Ethiopian region. Bulletin of the British Museum of Natural History (Entomology) 33: 191-346. [In English]. URL: <http://www.biodiversitylibrary.org/page/41008014#page/219/mode/1up>
- Lyneborg L (1992) Therevidae (Insecta: Diptera). In 'Fauna of New Zealand/ Ko te Aitanga Pepeke o Aotearoa. 24. DSIR Plant Protection/ Te Wahanga Manaaki Tupu, Auckland, 139 pp. [In English]. URL: <http://www.biotaxa.org/fnz/article/download/1782/2916>
- Lyneborg L (2001) The Australian Stiletto-flies of the *Anabarhynchus* genus-group (Diptera: Therevidae). 13. Entomonograph, 1-256 pp. [In English]. [ISBN 87-88757-58-7]

- Macquart J (1848) Diptera extiques nouveaux ou peu connus. Mémoires de la Société Royal des Sciences, de l'Agriculture et des Arts, de Lille 1847: 161-237. [In French]. DOI: <http://dx.doi.org/10.5962/bhl.title.15792>
- Malloch JR (1932) Rhagionidae, Therevidae. In 'Diptera of Patagonia and south Chile based mainly on material in the British Museum (Natural History). Part V. Fascicle 3. Rhagionidae (Leptidae), Therevidae, Scenopenidae, Mydadae, Asilidae, Lonchopteridae'. Trustees of the British Museum (Natural History), London, 1-257 pp.
- Mc Alpine JF (1981) Morphological and Terminology. In: McAlpine JF, Peterson BV, Shewell GE, Teskey HJ, Vockeroth JR, Wood DM (Eds) *Manual of Nearctic Diptera*,. Monograph No. 27, Volume 1. Research Branch, Agriculture Canada, Ottawa, 9-63 pp. [In English]. [ISBN 0-660-10731-7].
- Nagatomi A, Lyneborg L (1987) Redescription of *Irwinella sauteri* from Taiwan and the Ryukyus (Diptera: Therevidae). Kagoshima University Research Center for the South Pacific Vol 8 (1): 12-20. [In English]. URL: http://ir.kagoshima-u.ac.jp/bitstream/10232/15687/1/AN00181784_v8-1_p12-20.pdf
- Webb DW (2006) The neotropical genera *Microthereva* Malloch and *Peralia* Malloch (Diptera: Therevidae: Therevinae). Zootaxa 1295: 1-27. [In English]. URL: <http://www.mapress.com/zootaxa/2006f/z01295p027f.pdf>
- Winterton SL (2006) New species of *Epsilocephala* Kröber from Australia (Diptera: Therevidae). ZooKeys 95: 29-79. [In English]. URL: <http://www.mapress.com/zootaxa/2006f/zt01372p025.pdf>
- Winterton SL (2011) Revision of the stiletto fly genera *Acupalpa* Kröber and *Pipinnipons* Winterton (Diptera, Therevidae, Agapophytinae) using cyber taxonomic methods, with a key to Australian genera. ZooKeys 95: 29-79. [In English]. DOI: <http://dx.doi.org/10.3897/zookeys.95.1461>
- Winterton SL, Irwin MI, Yeates DK (1999) Systematics of *Nanexila* gen. nov. (Diptera: Therevidae) from Australia. Invertebrate Taxonomy 13: 237-308. [In English]. DOI: <http://dx.doi.org/10.1071/IT97029>