

REVIEW

Open Access



Retina and glaucoma: surgical complications

Niroj Kumar Sahoo^{1†}, Pasyanthi Balijepalli^{2†}, Sumit Randhir Singh¹, Mahima Jhingan³, Sirisha Senthil² and Jay Chhablani^{1*}

Abstract

Background: The close structural and microcirculatory co-relation between anterior and posterior segments of eye make them very vulnerable to complications when one of them is affected surgically. With the advent of anti-fibrotic agents in the management of glaucoma, the rates of vitreoretinal complications have become more frequent.

Main body: Common retinal complications after glaucoma surgeries include choroidal detachment; ocular decompression retinopathy; haemorrhagic choroidal detachment; hypotony maculopathy; malignant glaucoma; vitreous haemorrhage; bleb endophthalmitis; retinal detachment. Similarly, intraocular pressure rise is often noted after scleral buckle; pars plana vitrectomy; intravitreal gas injection; silicone oil injection; intravitreal steroid injection.

Conclusion: The article provides some insight into some of the complications after glaucoma and retina surgeries, including the pathogenetic mechanisms behind each complication and available management options.

Keywords: Retinal complications, Glaucoma, Filtration surgery, Glaucoma after retinal surgeries

Background

It is very common to see retina and glaucoma surgeon, working in tandem to manage some of the most complicated cases. Vitreous, retina, choroid and aqueous humour dynamics share a complex architectural milieu. Be it due to the close proximity of the structures or the interdependent blood circulation, even the slightest of structural or microcirculatory alteration in one can lead to dramatic consequence in the other. This intrinsic co-relation often manifests itself as various complications when surgically disturbed. Whether it is an acute rise in intraocular pressure (IOP) following a retinal surgery or some of the sight threatening complications of filtration surgeries, outcomes can be relentless and unforgiving for both patient and treating physician.

This review article describes pathogenic mechanisms, clinical features, and management strategies for retinal complications after glaucoma surgeries and vice versa.

Retinal complications following glaucoma surgery

Despite modern advances in filtration surgeries, retinal complications remain a significant cause of post operative vision loss. A sudden drop in pressure and the resultant change in ocular dynamics are implicated in most cases. Among newer minimally invasive glaucoma surgeries (MIGS), schlemm canal based micro-stent surgeries have lower rates of complications owing to the limitation in intra-ocular pressure drop due to resistance in the episcleral vessels [1]. Complications can be classified as shown in Table 1.

Ocular decompression retinopathy (ODR)

Described by Fechner et al., in 1992, it is characterized by optic nerve changes and retinal haemorrhages secondary to an iatrogenic sudden decrease in IOP after glaucoma filtering surgery [2].

*Correspondence: jay.chhablani@gmail.com

[†]Niroj Kumar Sahoo and Pasyanthi Balijepalli contributed equally to this manuscript

¹ Smt. Kanuri Santhamma Centre for Vitreo-Retinal Diseases, LV Prasad Eye Institute, Hyderabad 500034, India

Full list of author information is available at the end of the article



Table 1 Summary of complications following retinal and glaucoma surgeries

Conditions	Articles	Type of article	Summary
<i>Retinal complications of glaucoma surgeries</i>			
Ocular decompression retinopathy (ODR)	Fechner et al. [2] Arévalo et al. [9]	Original article Original article	Coined the term ocular decompression retinopathy ODR occurred after trabeculectomy (4 eyes), phacomulsification (3 eyes), Ahmed valve placement (1 eye), silicone oil removal (1 eye) and vitrectomy (1 eye)
Serous choroidal detachment (CD)	Li et al. [8] Investigators A, (AGIS) [12]; Gedde et al. [13]; Elhofi and Lolah [14] De Gregorio et al. [15]; Grover et al. [16]; Schlenker et al. [17] Bakir and Pasquale [20]	Case report Original article Original article Original article Original article Original article Original article Review article	ODR following canaloplasty Incidence of 7.9–50% after penetrating glaucoma surgeries CD following Xen Gel Stent
Suprachoroidal haemorrhage (SCH)	Tuli et al. [25]; Vaziri et al. [26]; Jeganathan et al. [27]	Original article Original article Original article	Anti-metabolites as a risk factor Incidence is around 0.6–1.5% after trabeculectomy and around 0.5–8.3% after tube shunt procedures
Hypotony maculopathy	Fannin et al. [31]; Tsai et al. [32]; Suner et al. [33] Schlenker et al. [17]; Vold et al. [34]	Original article Original article Original article Original article	Incidence is 1.3–20% after glaucoma filtering surgery
Malignant glaucoma	Simmons [39]; Chandler et al. [40]; Eltz and Gloor [41] Schlenker et al. [17]	Review article Review article Review article Original article	Occurs following MIGS Incidence of 0.4–6% of cases after penetrating glaucoma surgeries
Vitreous haemorrhage	Law et al. [52] Schlenker et al. [17]	Original article Original article	Following Xen gel stent Seen in 5% of patients after aqueous shunt implantation
Endophthalmitis	Ang et al. [55]; Vaziri et al. [26]; Muckley and Lehrer [57] Busbee et al. [60]	Original article Original article Original article Original article	Following Xen gel stent Incidence of 0.12–1.3%, Prompt vitrectomy is considered more beneficial than tap and injections even when presenting vision is better than hand movement
Retinal detachment	Waterhouse et al. [61]	Original article	Incidence of 5% following Molteno tube implantation
Glaucoma after retinal surgery	Perez et al. [65]; Smith et al. [75]; Kreiger et al. [76]; Sebestyén et al. [77] Pavlin et al. [78]	Original article Review article Original article Original article Original article	Incidence of angle closure glaucoma is 1.4–4.4%
Scleral buckle			Suprachoroidal fluid with increased ciliary body thickness in 80% eyes following buckle

Table 1 (continued)

Conditions	Articles	Type of article	Summary
Pars plana vitrectomy	Hayreh (1973)	Original article	Glaucoma following anterior segment ischemia
	Sidoti et al. [84]	Original article	85% success rate with the placement of silicone tube in between the buckle and the overlying capsule after incising the capsule over the buckle at the apex
	Smith et al. [85]	Original article	Krupin Denver implant and trimmed Baerveldt implants (success rates of 82 and 73% at 1 and 2 years respectively)
	Scott et al. [86]	Original article	Baerveldt implants with intact plate successfully reduces IOP
	Chang [66]; Koreen et al. [87]	Original article Original article	Incidence between 11.6 and 20%
	Koreen et al. [87]	Original article	Lens extraction as a major risk factor
	Inoue et al. [91]	Original article	Success rate of trabeculectomy with Mitomycin-C is 55.1% at 1 year, and 43.1% at 3 years
	Vitrectomy with silicone oil or sulfur hexafluoride gas in eyes with severe proliferative vitreoretinopathy: results of a randomized clinical trial. Silicone Study Report 1 and 2	Original article	Incidence of high IOP following injection of 20% SF6 and 14% C3F8 was found to be 6.1 and 18% respectively
	Honavar et al. [68]; Unosson et al. [98]; de Corral et al. [99]	Original article Original article Original article	Incidence of glaucoma after silicone oil injection ranges from 4.8 to 48%
Intravitreal gas injection	Honavar et al. [68]	Original article	Pre-existing glaucoma, diabetes mellitus, aphakia, rubeosis iridis, silicone oil in the anterior chamber and high IOP on first post-operative day are positive risk factors whereas anatomic failure and myopia as negative risk factors for the development of glaucoma
	Nguyen et al. [106]	Original article	Successful IOP control in 3 out of 5 eyes that underwent trabeculectomy with mitomycin C
	Kiddee et al. [108]; Ansari et al. [109]	Systematic review Original article	60% success rate with Molteno implant
	Kiddee et al. [108]	Systematic review	Incidence has been reported to be as high as 11–79%.
Intravitreal steroid injection	Ricci et al. [114]	Original article	IOP rise in 32% cases after 4 mg intravitreal triamcinolone, 66 and 79% following 0.59 and 2.1 mg fluocinolone implant, respectively, and 11 and 15% after 0.35 and 0.7 mg dexamethasone implant, respectively
	Rubin et al. [115]	Original article	ALT seems to be effective in reducing IOP SLT lowered ($P < 0.007$) IOP in 5 eyes of 7 patients with steroid-induced increased IOP from 3 weeks to 6 months postoperative

Mechanism

Two mechanisms have been proposed for the pathogenesis. According to the mechanical theory, manifestations occur due to certain structural changes in the wall of the sclera and the resultant shearing of capillaries [3]. A sudden drop in pressure following procedure like iridotomy in an eye with pupillary block can result in rapid reduction in the posterior chamber volume and cause forward vitreous displacement and hemorrhage [4]. Also an acute drop in IOP can cause an anterior shift of lamina cribrosa leading to optic disc edema [5]. Disc edema itself can compress the central retinal vein, resulting in diffuse retinal haemorrhages.

As per the vascular theory, a transient decrease in IOP may reduce retinal arterial resistance, resulting in increased flow and leakage through already fragile capillaries [3]. A breakdown of auto-regulation mechanism occurs in conditions like poorly controlled diabetes mellitus, hypertension, prolonged exposure to elevated IOP or long-standing inflammatory conditions like uveitic glaucoma [2, 6, 7]. In these patients, a transient decrease in IOP may result in leakage through already fragile capillaries. In response to this, the vessels form fibrin plugs which appear as a white centre in the blot haemorrhages.

Etiology

The most common procedure implicated in ODR is trabeculectomy with Mitomycin C [5]. Procedures like iridotomy, iridoplasty, glaucoma drainage devices, trabeculotomy, anterior chamber (AC) paracentesis, vitrectomy, phacoemulsification, medical management of glaucoma, orbital decompression, deep sclerotomy, ExPRESS shunt implantation and canaloplasty have also been described [8, 9].

Clinical features

Although most of the cases are asymptomatic, a central scotoma or floaters may be occasionally seen. Retinal findings include white centered haemorrhages, haemorrhages involving all the retinal layers, vascular tortuosity, macular edema; disc edema, hyperemia, haemorrhage; vitreous haemorrhage and choroidal detachment. Haemorrhages can involve the peripheral retina as well as the posterior pole, and may even present with an epiretinal membrane [10].

Imaging

Fundus fluorescein angiography (FFA) shows blocked fluorescence in areas of haemorrhage with a normal

arm-retina time. Optical coherence tomography (OCT) can be helpful in detecting macular edema [11].

Differential diagnosis

The differential diagnoses of ODR include central retinal vein occlusion (CRVO), ocular ischemic syndrome, Terson syndrome, diabetic retinopathy, Valsalva Retinopathy, shaken baby syndrome and coagulopathies. Older age group, venous dilatation, delayed venous filling and persistent macular edema seen in CRVO, helps in differentiating it from ODR [5].

Management

ODR is a self-limiting condition which usually resolves in around 2 weeks to 72 weeks. In most patients, no intervention is required. Around 14% of the patients require vitrectomy to remove a visually significant, non-resolving vitreous or pre-retinal haemorrhage. In high risk patients, a gradual control of IOP before surgery and intra-operatively has been suggested. However, if a rapid reduction is required to preserve vision, it is to be pursued, as ODR has a benign course [5].

Serous choroidal detachment

Serous choroidal detachment (CD) is a common condition following glaucoma surgery characterized by the accumulation of serous fluid in the suprachoroidal space. The reported incidence is between 7.9 and 50% after penetrating glaucoma surgeries [12–14]. Non-penetrating glaucoma surgeries have a lower incidence due to a lower risk of post-operative hypotony. Newer MIGS procedures like sub-conjunctival Xen Gel Stent (Allergan Plc, Dublin, Ireland) have also been reported with CD [15–17].

Mechanism

The choriocapillaries have large fenestrations that allow proteins to escape, allowing fluid accumulation in the suprachoroidal space. Normally, the force exerted by the IOP prevents this fluid accumulation. Also, the sclera exerts an outward force, while the choroid exerts a weak inward force, resulting in a negative (-2 mmHg) pressure gradient which allows for the passage of aqueous to the supra-choroidal space and ultimately out through the choroid or the sclera to the lymphatic orbital vessels [18]. If the IOP drops below the episcleral venous pressure, accompanied by a large inflammatory response, excessive protein leakage can occur from the choriocapillaris and a choroidal effusion can develop [19].

Etiology

The most common risk factor is glaucoma surgery in the setting of overfiltration or a bleb leak, especially with peri-operative antimetabolites use [20]. The added effects

of cyclitis and ocular penetration of Mitomycin-C results in a decreased aqueous formation that can aggravate the process of hypotony [21]. Drugs like acetazolamide [22], can also cause a secondary acute angle closure glaucoma that may arise due to choroidal effusion. A recent comparison article between Ahmed and Baerveldt glaucoma tube shunts showed early postoperative choroidal effusion rates of 15% in Ahmed valves versus 10% in Baerveldt valves [23]. The Tube Versus Trabeculectomy (TVT) study showed a 14% prevalence of choroidal effusion in the tube group versus 13% in the trabeculectomy group [13].

Clinical features

It is usually self-limiting, localized or non-appositional and presents as painless, smooth, dome-shaped, orange or light brown elevation, found mostly in the peripheral fundus (Fig. 1f). Its extent is usually limited by the anatomy of the vortex veins. It demonstrates a characteristic trans-illumination. The above mentioned features help to differentiate it from retinal detachments (RD). Vision may be affected by a large CD affecting macula or due to concurrent conditions like serous RD, vitreous haemorrhage, cystoid macular edema or macular folds/hypotony maculopathy. The patient can present with pain in case of elevated IOP or angle closure. Anterior rotation of ciliary body results in shallowing of AC more in the periphery. Differential diagnoses include suprachoroidal haemorrhage, mass lesions of the choroid, or RD.

Imaging

Ultrasound B-scan helps in delineating the extent of CD and differentiating it from other conditions. Figure 1e corresponds to cilio-choroidal detachment. OCT of the macula can detect subretinal fluid or hypotony maculopathy.

Management

Management includes stopping of all topical and systemic IOP lowering agents. Cycloplegics help to deepen the anterior chamber and angle due to posterior rotation of the iris-lens diaphragm. Topical steroids are often required to suppress inflammation [20]. Systemic steroids can be initiated in presence of extensive CD with intense inflammation [20]. Hypotony can be managed either by suturing of trabeculectomy wound, bandage contact lens for a leak, ligation of the tube in case of glaucoma drainage devices. Surgery is indicated in case of a large appositional choroidal effusion (termed “kissing choroids”) as it can lead to vitreoretinal adhesions in the area of apposition and can cause retinal breaks and RD [20]. Other indications for intervention include intractably low IOP with flat anterior chamber, corneal edema,

or cataract formation. Inferior-nasal and inferior-temporal quadrant are often selected for drainage of CD. After paracentesis and placement of anterior chamber (AC) maintainer, a conjunctival dissection down to sclera, often in a fornix-based approach, is performed. A rectangular or triangular partial thickness scleral flap is created followed by a 2 mm radial incision 3.5 mm from the limbus carried down to the choroid. Gentle elevation of the sclera and depression of the globe with a cotton swab or muscle hook may be needed to express the choroidal effusion. The scleral incision site is often left unsutured and the conjunctiva is approximated to the limbus [20]. A transconjunctival drainage with the help of trocars has been described in which the trocar should be introduced as flat (ideally 20°) as possible to the scleral plane to avoid choroidal damage [24].

Haemorrhagic choroidal detachment

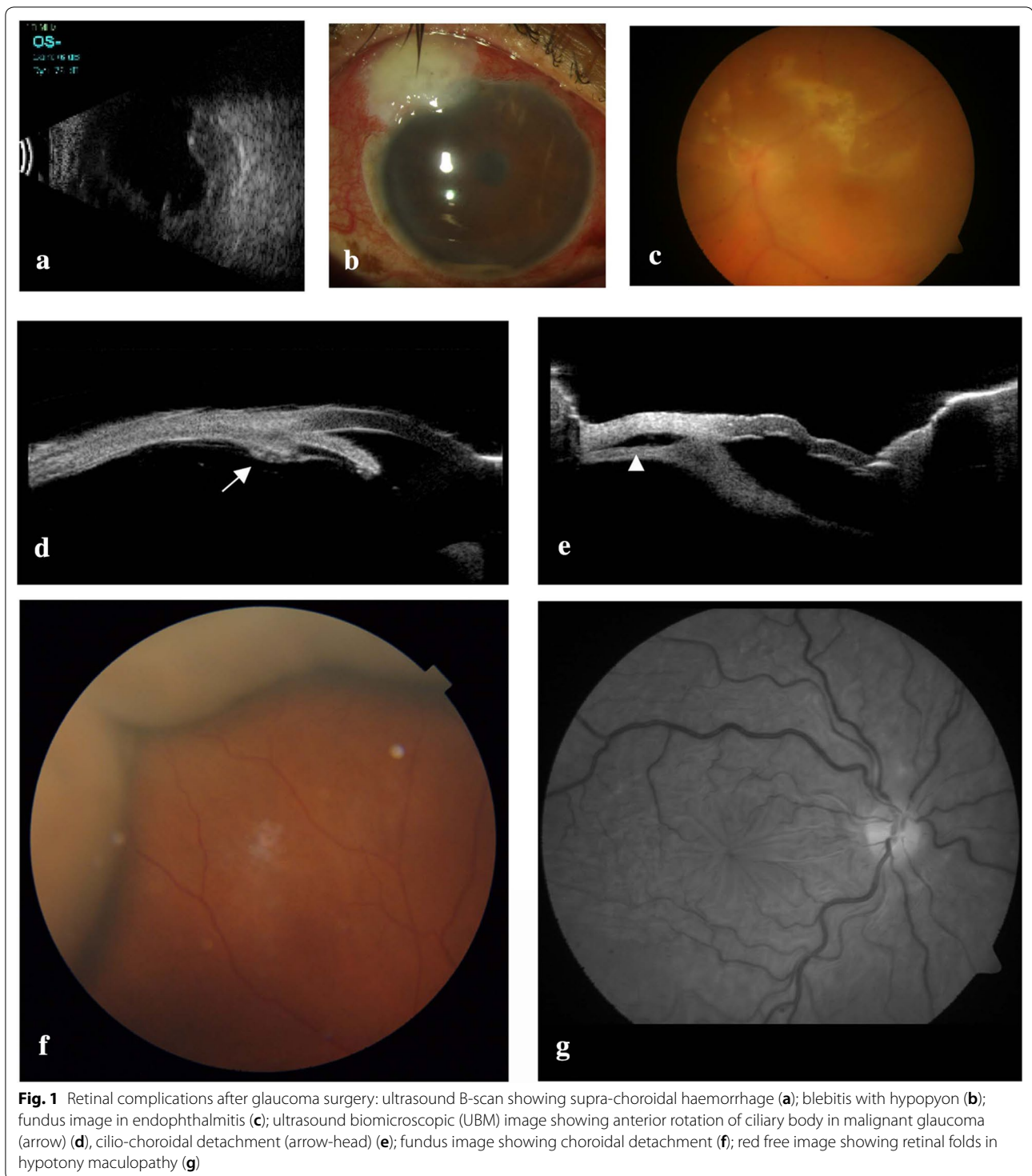
Suprachoroidal haemorrhage (SCH) occurs due to rupture of posterior ciliary vessels that bridge the suprachoroidal space from the sclera to choroid, secondary to mechanical trauma due to a rapid reduction in IOP. Incidence is around 0.6% to 1.5% after trabeculectomy and around 0.5–8.3% after tube shunt procedures [25–27]. Risk factors include high preoperative IOP, severe postoperative hypotony, aphakia, pseudophakia, high myopia, anticoagulation, white race, prior intraocular surgery, low postoperative IOP, systemic hypertension, ischemic heart disease, and pulmonary disease.

Clinical features

It presents as a smooth, dark brown, dome-shaped choroidal elevation, associated with pain. IOP can be either low or high. Intra operative signs suggestive of SCH include loss of red reflex, hardening of globe and persistent shallowing of AC or even extrusion of intraocular contents when massive.

Management

Limited detachments confined to 1 or 2 quadrants, can be observed with conservative management similar to the choroidal detachment [28]. Systemic steroids help in controlling the inflammation caused due to the breakdown of haemoglobin and its by-products [29]. Serial B-scan ultrasonography is important in monitoring the liquefaction and resolution of the SCH (Fig. 1a). Intraoperative SCH requires urgent closure of section and all wounds along with administration of hyperosmotic agents. Isolated massive suprachoroidal haemorrhages can be drained externally using radial sclerotomies, whereas a combined surgical approach including posterior sclerotomies, vitrectomy, sclera buckling and silicone oil injection, may be required in the presence of a



concurrent RD [26]. Hemorrhagic choroidal effusion will drain easier if the blood is allowed to liquefy first (which takes place in about 7–10 days), but earlier intervention is performed in intractable elevated IOP or severe eye

pain [5]. Technique of drainage is same as that explained for serous CDs.

Hypotony maculopathy

Pederson described hypotony as an IOP less than 6.5 mmHg, which corresponds to more than three standard deviations below the mean (Statistical hypotony); or where the IOP is low enough to result in a visual loss (clinically significant hypotony) [30]. The reported incidence is 1.3–20% of cases after glaucoma filtering surgery, more commonly after use of Mitomycin-C than 5-fluorouracil [31–33].

Etiology

It is the result of reduced scar formation, a direct toxic effect on the ciliary body or certain changes in the conjunctiva. Causes may be wound leak, overfiltration, iridocyclitis, ciliochoroidal detachment, retinal detachment or cyclodialysis. Other risk factors are younger age and myopia. It has also been described following newer supra-choroidal [34] and sub-conjunctival [17] MIGS devices owing to achievement of low post-operative IOP.

Clinical features

Patients may be asymptomatic or may have a diminution of vision due to distortion of the overlying retinal receptors and irregular corneal induced astigmatism. Papilloedema, accompanied by retinal vascular engorgement and tortuosity, and wrinkling of the retina and choroid, is the predominant picture (Fig. 1g). Alternate dark and light colored streaks in the fundus are a common finding. Although uncommon, cystoid macular oedema secondary to abnormal capillary permeability has been reported [35]. Gass [36] suggested that Hypotony causes an inward collapse of the scleral wall, resulting in redundancy of the choroid and retina, chorioretinal wrinkling. The retinal folding results due to the peculiar anatomy of the macula. Hypotony causes a decrease in the antero-posterior diameter of the vitreous cavity which causes the very thick perivofeal retina surrounding the very thin foveal retina to be thrown into radial folds around the fovea. Papilloedema occurs due to anterior bowing of the lamina cribrosa, constricting the axonal bundles in the lamina scleralis and reducing axoplasmic transport. Additional source of the disc leak includes leakage from the choriocapillaris, and secondary to hypoxia and endothelial cell damage. Differential diagnoses include idiopathic chorioretinal folds, retrobulbar mass lesions, scleral inflammation, scleral buckle, choroidal tumours, and choroidal neovascularization.

Imaging

FFA demonstrates disc leak and fluorescent streaks corresponding to the crest, while the troughs appear as a narrow dark line. B-scan ultrasonography (USG) is useful when the fundus is not easily visualized. It can help

in excluding the presence of ciliochoroidal detachment, suprachoroidal haemorrhage and retinal detachment. It shows flattening and thickening of the posterior sclera and choroid. Ultrasonic biomicroscopy can be employed to evaluate the anterior chamber depth, the position of the ciliary body, a cyclodialysis cleft and the presence of anterior ciliary detachment. Intraoperatively, the ciliary body can be directly visualized to evaluate rotation and traction using endoscopy. Optical coherence tomography (OCT) of the posterior pole can help to better demonstrate subtle macular fluid or folds. Magnetic resonance imaging shows an abnormal plaque-like thickening of the macula and flattening of the posterior globe.

Management

Management includes identifying the cause and appropriate management. In case of hypotony, make sure all anti-glaucoma medications are stopped. Measures to control wound leak include pressure patching, collagen shield application or contact lens tamponade, fibrin glue application of the wound site, bleb revision or resuturing. In case of over filtering bleb, intra-bleb or subconjunctival peribleb injection of autologous blood, conjunctival compression sutures or bleb revision are options. A modified technique of transconjunctival suturing of the scleral flap has been described by Moster [37]. The suture is taken through the conjunctiva, full-thickness sclera and then out through the conjunctiva. This provides a tamponading effect on the bleb. In late leaking blebs, bleb excision with surgical revision and reconstruction of the filtering bleb with a free conjunctival autograft with or without donor scleral graft can be tried if above mentioned therapies fail. Cataract extraction performed in previously overfiltering eyes can reduce the filtering efficacy by inciting mild inflammation [38].

Malignant glaucoma

It is alternatively known as ciliary block glaucoma, aqueous misdirection syndrome, and direct lens-block glaucoma. It has been reported to occur in 0.4–6% of cases after penetrating glaucoma surgeries, seen more commonly in chronic angle closure glaucoma [39–41]. Schlenker et al. [17] have reported 4 cases of malignant glaucoma following Xen gel stent. Risk factors include hyperopia, nanophthalmos and female gender (presumably due to smaller anterior segment dimensions) [42].

Pathogenesis

It is a multifactorial condition in which there is an alteration in the anatomic relationship of the lens, ciliary body, anterior hyaloid face, and vitreous, resulting in forward movement of the iris-lens diaphragm. Three pathogenic mechanisms have been proposed. (a) Shaffer and

Hoskins suggested that due to the posterior diversion of flow, aqueous starts accumulating behind a posterior vitreous detachment resulting in the secondary forward movement of the iris-lens diaphragm [43]. (b) Chandler proposed that a forward movement of lens occurs due to laxity of lens zonules and an increased vitreous pressure [44]. (c) According to Quigley et al., choroidal expansion causes an increased vitreous pressure and the initial compensatory outflow of aqueous along the postero-anterior pressure gradient causes shallowing of the anterior chamber [45, 46].

Clinical features

Anterior segment features include shallowing of the central and peripheral anterior chamber associated with increased or normal IOP in the presence of a patent iridotomy (indicating a non-pupillary block mechanism). Posterior segment is usually normal (ultrasound B-Scan should be performed to rule out anterior ciliochoroidal detachment or suprachoroidal haemorrhage which may also present in a similar way). The first symptom is often worsening of distance vision and improvement in near vision secondary to forward shift of the lens iris diaphragm causing a myopic shift. IOP is typically greater than 21 mm Hg, but it may be normal or even low [47]. Pain and inflammation occur when the IOP rises spontaneously and corneal edema develops. UBM may show anterior rotation of the ciliary processes, which press against the lens equator (or the anterior hyaloid in aphakia) and prevent forward flow of aqueous (hence the term ciliary block glaucoma) (Fig. 1d).

Management

Management consists of the use of cycloplegics and mydriatics to tighten the zonules thereby pulling the lens-iris diaphragm backwards and deepen the AC; [39] topical antiglaucoma medications and steroid eye drops. Nd:YAG laser capsulohyaloidotomy with disruption of the anterior hyaloid face is often effective in treating malignant glaucoma by establishing a direct communication between the vitreous cavity and anterior chamber [48]. Transscleral cyclodiode laser photocoagulation, argon laser treatment of the ciliary processes or cyclocryotherapy, helps to eliminate an abnormal vitreociliary relationship [49]. Vitrectomy, with or without cataract extraction, along with an additional step of zonulohyaloidectomy, has been described by Tsai et al. [50]. In refractory cases, glaucoma drainage devices are useful to control IOP. Prophylactic measures should be undertaken in high-risk fellow eyes when surgical intervention is planned. Good preoperative IOP control,

cessation of miotic drops, prolonged use of cycloplegics after trabeculectomy, avoidance of sudden intraoperative hypotony and anterior chamber shallowing in the post-operative period can help in the prevention of malignant glaucoma [51].

Vitreous haemorrhage

Law et al. described it in around 5% of patients after aqueous shunt implantation [52]. Recently, it has also been described following Xen gel stent [17]. The haemorrhage may be either due to bleeding from associated posterior segment pathologies like suprachoroidal haemorrhage, retinal breaks, pars plana tube insertion site, deep sclera sutures, or as an extension of anterior chamber bleeds from shunt entrance wound, neovascularisation of iris, iris-tube contact in aphakics. It has also been described after injection of autologous blood into the bleb. Isolated haemorrhages are observed for spontaneous resolution. Vitrectomy is indicated in cases associated with posterior segment pathologies or when vitreous haemorrhage compromises the shunt outflow resulting in increased IOP [53, 54].

Endophthalmitis

The incidence of bleb-related endophthalmitis (BRE) is around 0.12–1.3%, while bleb infection without vitreous inflammation (so-called blebitis) has been reported in around 0.55–2.6% of eyes [55–57]. Representative cases are shown in Fig. 1b, c. Peri-operative use of anti-fibrotic agents increases the risk (due to thin-walled, avascular, and leaky blebs). Onset is considered to be more insidious than that occurring after cataract surgery, with the initial presentation being a non-specific uveitis [58]. Early infections usually occur within the first month of surgery and are secondary to intraoperative contamination whereas late cases can occur years after glaucoma surgery and are probably due to bacterial contamination through a leaking bleb or tube erosion or exposure. While blebitis responds to intensive topical and systemic antibiotics, its early detection and treatment can prevent the progression to BRE [59]. Treatment of BRE should be aimed at the removal of the infective foci. Thus, it should be managed by a repair of a bleb leak, covering of an eroding tube with a scleral or pericardial patch graft, or removal of the tube/implant. Bacterial strains causing endophthalmitis after shunt procedures are more virulent than those after cataract surgery, with a high percentage of cases being caused by *Streptococcus* species. Thus it has a worse prognosis than the latter and prompt vitrectomy is often considered more beneficial than tap and injections even when presenting vision is better than hand movement [60].

Retinal detachment

Waterhouse et al. reported an incidence of 5% following Molteno tube implantation, with most cases occurring within 4 months of surgery [61]. An underlying associated pathology can be attributed in most cases, like lattice degeneration, choroidal effusion, retinal apposition from a suprachoroidal haemorrhage, uveitis, chorioretinal scar, trauma, vitreous incarceration, scleral perforation, and retinal dialysis following pars plana tube placement [52]. Management involves treatment of breaks along with the underlying retinal pathology. Careful conjunctival handling is required to prevent bleb leaks, scarring of blebs or exposure/displacements of implants. Silicone oil should be used with caution in the presence of a glaucoma drainage device as it can lead to migration of oil into the subconjunctival space [62]. These patients, in general, have a very guarded visual prognosis.

Glaucoma after retinal surgery

IOP elevation, either transient or sustained, is a common complication associated with retinal surgeries. It has been reported in around 19 to 28% of cases post surgery [63, 64]. Both external procedure such as scleral buckle [65] and internal procedures such as pars plana vitrectomy [66], intravitreal gas injection [67], intravitreal silicone oil injection [68], intra vitreal steroid injection [69], have been implicated. Anderson et al. [70] reported a 5–12 h IOP spike above 29 mm Hg in 8.4% patients after vitreo-retinal surgery, which included both scleral buckle and pars plana vitrectomy. The cause of raised intra ocular pressure is multifactorial in origin and can occur as a complication of the surgery itself, or due to co-existing primary open angle glaucoma (POAG), angle recession, neo-vascular or steroid induced glaucoma. An association between POAG and retinal detachment has been suggested in view of myopia being a common risk factor [71, 72] and the use of miotics in glaucoma that predisposes to retinal detachment [73]. Certain eye conditions such as Stickler's, Wagner's, Retinitis Pigmentosa can also predispose to the development of glaucoma [74].

Scleral buckle

The procedure of scleral buckle involves the placement of silicone band or sponge against the sclera to relieve the traction over a retinal tear so as to facilitate resolution of sub-retinal fluid. The indentation caused by this on the sclera results in certain changes in the geometry of the eye that predisposes to a secondary angle closure type of glaucoma. The incidence of angle closure glaucoma has been reported to be around 1.4–4.4% [65, 75–77]. It occurs due to anterior displacement of the lens-iris diaphragm due to choroidal congestion. Pavlin et al. demonstrated supraciliary fluid with increased ciliary body

thickness by ultrasound biomicroscopy in 12(80%) out of 15 patients after scleral buckle surgery. Obstruction of venous drainage due to the buckle that results in choroidal congestion, culminating in the transudation of fluid into suprachoroidal space, was the proposed mechanism. The result was an anterior rotation of ciliary process with anterior displacement of the lens-iris diaphragm. Thus, it could either lead to a direct angle narrowing or predispose to a pupillary block [78]. Also, an anterior segment ischaemia in the post-operative period, following a high buckle, may be accompanied by an increase in IOP, corneal edema and fibrin in anterior chamber [79]. Reduction in choroidal blood flow can induce visual field changes in open angle glaucoma patients, even without an increase in IOP, similar to that seen in normal tension glaucoma [80].

However, it is important to note that the change in the shape of the globe also leads to an alteration in the distribution of stress and strain, which ultimately decreases the ocular rigidity. Thus, injection of intravitreal gas in these eyes would less likely result in an increase in IOP as compared to an unbuckled eye [81]. This should be kept in mind intra-operatively, so as not to over-fill the globe with gas while attaining a specific IOP.

The aim of treatment should be a control of IOP until the spontaneous resolution of the ciliary body edema occurs, which usually takes several days to weeks. Medical management with topical corticosteroids reduces the inflammation, cycloplegics help to shift the lens iris diaphragm posteriorly and antiglaucoma medications aid in the control of IOP. Miotics should be avoided as it can shift the lens-iris diaphragm forward and increase the inflammation. As the predominant mechanism is a direct angle narrowing rather than a pupillary block, laser iridotomy rarely helps [78]. Laser iridoplasty is usually beneficial in angle closure without a pupillary block [82]. Excess height of the buckle may lead to repeated suprachoroidal fluid accumulation. Loosening or cutting the buckle can help in such cases [83]. When there is permanent synechial angle closure with IOP uncontrolled medically, surgical glaucoma management can be considered. Trabeculectomy becomes challenging in a post buckle scarred conjunctiva, thereby making glaucoma drainage devices a better alternative. Various modifications in placing the implants have been tried. Sidoti et al. reported 85% success rate with the placement of silicone tube in between the buckle and the overlying capsule after incising the capsule over the buckle at the apex [84]. Krupin Denver implant and trimmed Baerveldt implants have been tried with similar end results [85]. Glaucoma drainage devices with an intact plate can also be used, as it has been shown to help in better IOP reduction by increasing the surface area of the fibrous capsule [86].

Pars plana vitrectomy

The incidence of glaucoma after pars plana vitrectomy has been reported between 11.6 and 20% [66, 87]. Acute post operative increase in IOP can be due to replacement with intra ocular tamponade (Gas/Silicone oil), use of intra operative endo-photocoagulation or post operative fibrinous inflammatory reaction. Late onset glaucoma can be due to topical steroid usage or pre existing causes such as angle recession or neovascular glaucoma (Fig. 2c). Lens extraction has been described as a major risk factor for the development of glaucoma after uncomplicated pars plana vitrectomy [87]. Other risk factors include pseudophakia and family history of open angle glaucoma [88].

Surgical inflammation and debris can reduce the aqueous outflow, alter the biochemical environment due to the release of diffusible factors after removal of cortical vitreous and can increase the susceptibility of optic disc to glaucomatous damage. Chang et al. proposed that in non vitrectomised eyes, there exists a gradient in the oxygen tension in vitreous, the highest being near the retinal surface, decreasing gradually as we reach the anterior vitreous and posterior to the lens. In vitrectomised eyes, oxygen tension near the lens rises to 2–3 times the pre-operative levels. In phakic eyes, this increase in oxygen behind the lens causes nuclear sclerosis, while in pseudophakics and aphakics, this increase in oxygen tension leads to change in the extracellular matrix in trabecular meshwork and thereby reducing aqueous outflow. This explains the increased risk of glaucoma in pseudophakic and aphakic eyes after vitrectomy [66]. Acute rise in IOP has also been demonstrated during minimally invasive vitreo-retinal surgeries [89, 90]. The rise mostly occurs during trocar insertion and can be prevented by modifying the technique of insertion from a direct insertion to a twisting manoeuvre.

Medical management is the first line of therapy for elevated intraocular pressure. When IOP is uncontrolled medically, surgical management can be considered. Due to conjunctival scarring, trabeculectomy is challenging in these cases. Inoue et al. reported the success rate of trabeculectomy with adjunctive Mitomycin-C to be 55.1% at 1 year, decreasing to 43.1% at 3 years. They proposed that high preoperative IOP and neovascular glaucoma are risk factors for failure [91]. Glaucoma drainage implant can be considered when there is a high risk of failure with trabeculectomy or in previously failed trabeculectomy. Rososinski et al. reported similar success rates with pars plana and anterior chamber Baerveldt tube insertions, with no increased risk of complications [92].

Intravitreal gas injection

Expansile gases like SF₆ (sulphur hexa fluoride), C₃F₈ (perfluoro propane) used in pneumatic retinopexy or combined with pars plana vitrectomy can cause elevated IOP. SF₆ doubles its size in 36 h and C₃F₈ quadruples in 3 days and the greatest pressure elevation occurs at the time of maximum expansion. Incidence of high IOP following intravitreal injection of 20% SF₆ and 14% C₃F₈ has been described to be 6.1% and 18%, respectively [93, 94]. Injection of intravitreal gas causes anterior displacement of the lens-iris diaphragm and secondary angle closure glaucoma and therefore face down position is advised in these cases to prevent the gas bubble from touching the lens and causing anterior pressure. Changes in the atmospheric pressure can cause further expansion of these gases and there by an acute elevation in IOP [95]. These patients are thus advised against a flight travel during the presence of intravitreal gas in the early postoperative period.

Aqueous suppressants can be used to control the intraocular pressure. When increase in IOP causes a compromise in ocular perfusion, aspiration of a portion

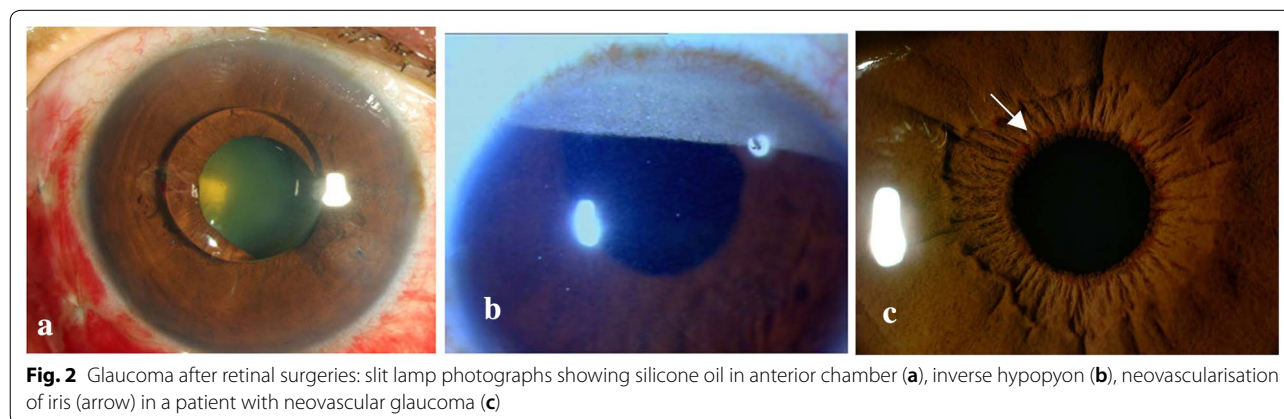


Fig. 2 Glaucoma after retinal surgeries: slit lamp photographs showing silicone oil in anterior chamber (a), inverse hypopyon (b), neovascularisation of iris (arrow) in a patient with neovascular glaucoma (c)

of intravitreal gas may be needed. When there is pupillary block, laser iridotomy may be required.

Silicone oil injection

Repeating units of Siloxane (Si–O) constitutes the silicone oil and is one of the commonest substitutes used as internal tamponade in vitreo-retinal surgery.

Pathogenesis

Dispersion is the process of splitting of oil into smaller bubbles. These small bubbles have high surface tension and hence tend to coalesce to form a larger bubble. Emulsification is a failure of these bubbles to coalesce to form a larger bubble. Various factors affect the emulsification of silicone oil. It can occur anywhere between 5 to 24 months (mean of 13.2 months) after silicone oil injection [96]. High molecular weight and high viscosity (5000 cSt) oil is more resistant to deformation, dispersion and emulsification. Intrinsic surfactants like fibrinogen, serum, fibrin, blood low density lipoproteins, as well as extrinsic surfactants on surgical instruments and sterilisation agents, decrease the surface tension and increase the risk of emulsification. Presence of nystagmus promotes emulsification while complete fill of globe with silicone oil and presence of a scleral buckle decrease the chance of emulsification [97].

Incidence and etiology

Incidence of glaucoma after silicone oil injection ranges from 4.8% and 48% [68, 98, 99]. Early post operative increase in IOP can be due to pupillary block, inflammation, migration of silicone oil into AC (Fig. 2a, b). Late causes include infiltration of trabecular meshwork with silicone oil bubbles, chronic inflammation, synechial angle closure, neovascular glaucoma, migration of emulsified silicone oil into anterior chamber and can also be idiopathic [97]. However, glaucoma can develop without the presence of silicone oil in AC [100] and conversely, normal IOP has been documented in patients with gonioscopic evidence of oil globule in angle [68, 101].

Prevention

In aphakic and pseudophakic eyes, it is preferable to perform Ando's iridectomy inferiorly during surgery to prevent pupillary block. Silicone oil bubble does not enter anterior chamber as it assumes a smooth spherical form due to cohesive forces. When there is pupillary block, aqueous accumulates behind the iris inferiorly in the posterior segment and forces silicone oil into the anterior chamber. An inferior iridectomy prevents such pupillary block. Iridotomy should be at least 150–200 microns to prevent pupillary block [102]. Despite all precautions, it

can close in around 32% of cases [103]. Nd YAG laser can be performed in such cases.

Honavar et al. reported pre existing glaucoma, diabetes mellitus, aphakia, rubeosis iridis, silicone oil in the anterior chamber and high IOP on first post operative day as positive risk factors whereas anatomic failure and myopia as negative risk factors for the development of glaucoma. Silicone oil emulsification and Diabetes Mellitus were also associated with poor prognosis for the control of glaucoma [68].

Management

Control of IOP with topical and systemic anti-glaucoma medications is usually the first option. Ando's iridotomy during surgery can prevent pupillary block. When there is pupillary block despite patent iridotomy, it could be due to improper size (too small/too large >2 mm), location (mid peripheral instead of extreme peripheral) of the iridotomy, or due to recurrence of retinal detachment or development of choroidal detachment [104]. Surgery is indicated when medical management fails. While a simple removal of silicone oil appears to be justified, the timing and its combination with anti-glaucoma surgery remain controversial. Studies have shown that patients treated with silicone oil removal alone may still require anti-glaucoma surgery in the future, whereas a combined surgery may increase the risk of post-operative hypotony [105]. With increasing duration of contact of silicone oil with trabecular meshwork, organic changes can occur in the trabecular meshwork making silicone oil removal alone ineffective to control elevated IOP. Also, elevated IOP can occur even after silicone oil removal due to the splitting of silicone oil droplets into smaller bubbles thus obstructing the trabecular meshwork. Thus, the management needs to be individualised and these eyes need careful and lifelong follow-up.

Conventional filtering surgeries have shown low success rates in these patients. Honavar et al. reported successful IOP control in 3 out of 5 eyes that underwent trabeculectomy with mitomycin C [68]. Emulsified silicone oil can block the ostium in superior trabeculectomy and can cause failure. Glaucoma drainage devices and trans-scleral cyclophotocoagulation can be considered in eyes with extensive conjunctival scarring. Nguyen et al. reported 60% success rate with Molteno implant and failure in 1 eye [106]. Inferior tube placement is preferred to prevent silicone oil blocking the tube [107].

Intravitreal steroid injection

Intravitreal injection of steroid has found its application in the treatment of macular edema following various conditions like diabetic retinopathy, uveitis, retinal vascular occlusions, choroidal neovascularisation and post

cataract surgery. Rise in intraocular pressure is one of the most common complications following intravitreal steroid injection. Incidence has been reported to be as high as 11–79% [108, 109]. The glaucoma is usually of an open angle type. Pre-existing glaucoma, myopia, diabetes mellitus and a family history of glaucoma are important risk factors for the development of glaucoma [110]. The IOP elevation is dependent on the dose, the chemical structure of the steroid and the duration of exposure. Kiddee et al. demonstrated IOP rise in 32% cases after 4 mg intravitreal triamcinolone, 66% and 79% following 0.59 and 2.1 mg fluocinolone implant, respectively, and 11% and 15% after 0.35 and 0.7 mg dexamethasone implant, respectively [108].

Pathogenesis

The exact mechanism by which it increases the IOP is highly controversial. Immediate rise of IOP following injection has been attributed to the direct effect of an increase in intra-ocular volume [111]. However, several mechanisms have been theorised for glaucoma developing within 1 week to 2 months. These include an increase in accumulation of glycosaminoglycans in the trabecular meshwork; steroid induced cytoskeletal changes; increased expression of the Trabecular Meshwork Inducible Glucocorticoid Response (TIGR) protein and high levels of Tissue Inhibitor of Matrix Metalloproteinase (TIMP) [110]. The rise in IOP is also high in case of accidental anterior vitreal injection since the drug reaches the anterior chamber in high concentrations resulting in elevated IOP and direct deposition of steroid particles in the trabecular meshwork [112]. Although the upregulation of myocilin gene has been suggested, a study done by Fingeret et al. did not find any co-relation [113].

Management

These patients usually respond to topical and systemic anti-glaucoma medications. It is important to monitor the IOP of these patients in the early post operative period so that further injections can be avoided in uncontrolled cases. The IOP decreases as the intravitreal concentration of the drug decreases over 4–6 months. The use of argon laser trabeculoplasty (ALT) [114] and selective laser trabeculoplasty (SLT) [115] have shown promising results. Vitrectomy and removal of an intravitreal implant may be needed in susceptible patients. Filtering surgeries are recommended in cases not responding to laser and medical management.

Conclusion

Surgical management of glaucoma and retinal pathologies have significantly improved the outcomes of refractory ocular conditions. However, these surgeries are

associated with complications and can be a nightmare for the ophthalmic surgeon. Although majority of the above mentioned conditions have a good visual prognosis and are self-limiting, co-existence of 2 or more complications can make the management more complex. Early detection and prompt treatment can help prevent serious sight threatening complications.

Abbreviations

IOP: intraocular pressure; MIGS: minimally invasive glaucoma surgeries; ODR: ocular decompression retinopathy; AC: anterior chamber; FFA: fundus fluorescein angiography; OCT: optical coherence tomography; CD: choroidal detachment; RD: retinal detachments; UBM: ultrasound biomicroscopy; SCH: suprachoroidal haemorrhage; BRE: bleb-related endophthalmitis; POAG: primary open angle glaucoma; SF6: sulphur hexa fluoride; C3F8: perfluoro propane; TIGR: trabecular meshwork inducible glucocorticoid response; TIMP: tissue inhibitor of matrix metalloproteinase; ALT: argon laser trabeculoplasty; SLT: selective laser trabeculoplasty.

Authors' contributions

JC has made substantial contributions to conception and design, or acquisition of data, or analysis and interpretation of data; NKS, PB, SRS and MJ have been involved in drafting the manuscript or revising it critically for important intellectual content; JC and SS have given final approval of the version to be published. JC has agreed to be accountable for all aspects of the work in ensuring that questions related to the accuracy or integrity of any part of the work are appropriately investigated and resolved. All authors read and approved the final manuscript.

Author details

¹ Smt. Kanuri Santhamma Centre for Vitreo-Retinal Diseases, L V Prasad Eye Institute, Hyderabad 500034, India. ² VST Center for Glaucoma Services, L V Prasad Eye Institute, Hyderabad 500034, India. ³ Aravind Eye System, Madurai, India.

Acknowledgements

Not applicable.

This manuscript has not been published elsewhere and has not been submitted simultaneously for publication elsewhere.

Competing interests

The authors declare that they have no competing interests.

Availability of data and materials

Not applicable.

Consent for publication

Not applicable.

Ethics approval and consent to participate

Not applicable.

Funding

Nil.

Publisher's Note

Springer Nature remains neutral with regard to jurisdictional claims in published maps and institutional affiliations.

Received: 8 May 2018 Accepted: 23 July 2018

Published online: 05 September 2018

References

- Yook E, Vinod K, Panarelli JF. Complications of micro-invasive glaucoma surgery. *Curr Opin Ophthalmol*. 2018;29(2):147–54.
- Fechtner RD, Minckler D, Weinreb RN, Frangei G, Jampol LM. Complications of glaucoma surgery: ocular decompression retinopathy. *Arch Ophthalmol*. 1992;110(7):965–8.
- Gupta R, Browning A, Amoaku W. Multiple retinal haemorrhages (decompression retinopathy) following paracentesis for macular branch artery occlusion. *Eye*. 2005;19(5):592.
- Obana A, Gohto Y, Ueda N, Miki T, Cho A, Suzuki Y. Retinal and subhyaloid hemorrhage as a complication of laser iridectomy for primary angle-closure glaucoma. *Arch Ophthalmol*. 2000;118(10):1446–9.
- Mukkamala SK, Patel A, Dorairaj S, et al. Ocular decompression retinopathy: a review. *Surv Ophthalmol*. 2013;58(6):505–12.
- Grunwald J, Riva C, Stone R, Keates E, Petrig B. Retinal autoregulation in open-angle glaucoma. *Ophthalmology*. 1984;91(12):1690–4.
- Grieshaber MC, Mozaffarieh M, Flammer J. What is the link between vascular dysregulation and glaucoma? *Surv Ophthalmol*. 2007;52(6):S144–54.
- Li G-Y, Alantaree S, Wang J-M, Zhang H. Ocular decompression retinopathy following canaloplasty for primary open angle glaucoma: a case report. *Medicine*. 2016;95(9):e2907.
- Arévalo JFMA, Fernández CF, Yépez JB, Krivoy D, Millán FA. Decompression retinopathy after intraocular surgery. *Arch Soc Esp Oftalmol*. 2007;82:629–34.
- Dudley DF, Leen MM, Kinyoun JL, Mills RP. Retinal hemorrhages associated with ocular decompression after glaucoma surgery. *Ophthalmic Surg Lasers Imaging Retina*. 1996;27(2):147–50.
- Bui CM, Recchia FM, Kammer JA, Recchia CC. Optical coherence tomography findings in ocular decompression retinopathy. *Ophthalmic Surg Lasers Imaging Retina*. 2006;37(4):333–5.
- Investigators A. The Advanced Glaucoma Intervention Study (AGIS): 11. Risk factors for failure of trabeculectomy and argon laser trabeculectomy. *Am J Ophthalmol*. 2002;134(4):481–98.
- Gedde SJ, Herndon LW, Brandt JD, et al. Postoperative complications in the Tube Versus Trabeculectomy (TVT) study during five years of follow-up. *Am J Ophthalmol*. 2012;153(5):804–814. e1.
- Elhofi AS, Lolah MM. Choroidal detachment after trabeculectomy versus deep sclerectomy in myopic patients. *Delta J Ophthalmol*. 2017;18(2):87.
- De Gregorio A, Pedrotti E, Russo L, Morselli S. Minimally invasive combined glaucoma and cataract surgery: clinical results of the smallest ab interno gel stent. *Int Ophthalmol*. 2018;38(3):1129–34.
- Grover DS, Flynn WJ, Bashford KP, et al. Performance and safety of a new ab interno gelatin stent in refractory glaucoma at 12 months. *Am J Ophthalmol*. 2017;183:25–36.
- Schlenker MB, Gulamhusein H, Conrad-Hengerer I, et al. Efficacy, safety, and risk factors for failure of stand-alone ab interno gelatin microstent implantation versus stand-alone trabeculectomy. *Ophthalmology*. 2017;124(11):1579–88.
- Emi K, Pederson JE, Toris CB. Hydrostatic pressure of the suprachoroidal space. *Investig Ophthalmol Vis Sci*. 1989;30(2):233–8.
- Sit AJ, McLaren JW. Measurement of episcleral venous pressure. *Exp Eye Res*. 2011;93(3):291–8.
- Bakir B, Pasquale LR. Causes and treatment of choroidal effusion after glaucoma surgery. *Semin Ophthalmol*. 2014;29(5–6):409–13.
- Roy AK, Padhy D. Serous retinal detachment after trabeculectomy in angle recession glaucoma. *GMS Ophthalmol Cases*. 2015;5:Doc15.
- Fan JT, Johnson DH, Burk RR. Transient myopia, angle-closure glaucoma, and choroidal detachment after oral acetazolamide. *Am J Ophthalmol*. 1993;115(6):813.
- Budenz DL, Barton K, Feuer WJ, et al. Treatment outcomes in the Ahmed Baerveldt Comparison Study after 1 year of follow-up. *Ophthalmology*. 2011;118(3):443–52.
- Retinal Physician, Volume: 11, Issue: New Retinal Physician July/Aug, page(s): 20, 21.
- Tuli SS, WuDunn D, Ciulla TA, Cantor LB. Delayed suprachoroidal hemorrhage after glaucoma filtration procedures. *Ophthalmology*. 2001;108(10):1808–11.
- Vaziri K, Schwartz SG, Kishor KS, et al. Incidence of postoperative suprachoroidal hemorrhage after glaucoma filtration surgeries in the United States. *Clin Ophthalmol*. 2015;9:579.
- Jeganathan VSE, Ghosh S, Ruddle JB, Gupta V, Coote MA, Crowston JG. Risk factors for delayed suprachoroidal haemorrhage following glaucoma surgery. *Br J Ophthalmol*. 2008;92(10):1393–6.
- Reynolds MG, Haimovici R, Flynn HW, DiBernardo C, Byrne SF, Feuer W. Suprachoroidal hemorrhage: clinical features and results of secondary surgical management. *Ophthalmology*. 1993;100(4):460–5.
- Senthil S, Gupta S, Balijepalli P. Restoration of pretrabeculectomy visual acuity and a functioning filtering bleb in an eye with delayed suprachoroidal haemorrhage following trabeculectomy. *BMJ case report*. 2015;2015:bcr2015211846.
- Pederson JE. Ocular hypotony. In: Ritch R, Krupin T, Shields MB, editors. *The glaucomas*. 2. Mosby: St. Louis; 1996. pp. 385–395.
- Fannin LA, Schiffman JC, Budenz DL. Risk factors for hypotony maculopathy. *Ophthalmology*. 2003;110(6):1185–91.
- Tsai JC, Chang HW, Kao CN, Lai IC, Teng MC. Trabeculectomy with mitomycin C versus trabeculectomy alone for juvenile primary open-angle glaucoma. *Ophthalmologica*. 2003;217(1):24–30.
- Suner IJ, Greenfield DS, Miller MP, Nicoletta MT, Palmberg PF. Hypotony maculopathy after filtering surgery with mitomycin C. Incidence and treatment. *Ophthalmology*. 1997;104(2):207–14 (discussion 214–5).
- Vold S, Ahmed IK, Craven ER, et al. Two-year COMPASS trial results: supraciliary microstenting with phacoemulsification in patients with open-angle glaucoma and cataracts. *Ophthalmology*. 2016;123(10):2103–12.
- Kokame GT, de Leon MD, Tanji T. Serous retinal detachment and cystoid macular edema in hypotony maculopathy. *Am J Ophthalmol*. 2001;131(3):384–6.
- Gass JDM. Hypotony maculopathy. In: Bellows JC, editor. *Contemporary ophthalmology, honoring Sir Steward Duke-Elder*. Baltimore: Williams and Wilkins; 1972. p. 343–66.
- Letartre L, Basheikh A, Anctil J-L, et al. Transconjunctival suturing of the scleral flap for overfiltration with hypotony maculopathy after trabeculectomy. *Can J Ophthalmol*. 2009;45:567–70.
- Costa VP, Arcieri ES. Hypotony maculopathy. *Acta Ophthalmol (Copenh)*. 2007;85(6):586–97.
- Simmons RJ. Malignant glaucoma. *Br J Ophthalmol*. 1972;56(3):263.
- Chandler PA, Simmons RJ, Grant WM. Malignant glaucoma: medical and surgical treatment. *Am J Ophthalmol*. 1968;66(3):495–502.
- Eltz H, Gloor B. Trabeculectomy in cases of angle closure glaucoma—successes and failures (author's transl). *Klin Monbl Augenheilkd*. 1980;177(5):556.
- Krix-Jachym K, Żarnowski T, Rękas M. Risk factors of malignant glaucoma occurrence after glaucoma surgery. *J Ophthalmol*. 2017;2017:9616738.
- Shaffer R. The role of vitreous detachment in aphakic and malignant glaucoma. *Trans Am Acad Ophthalmol Otolaryngol*. 1951;58:217–31.
- Chandler PA. Malignant glaucoma ★. *Am J Ophthalmol*. 1951;34(7):993–1000.
- Quigley HA, Friedman DS, Congdon NG. Possible mechanisms of primary angle-closure and malignant glaucoma. *J Glaucoma*. 2003;12(2):167–80.
- Quigley HA. Angle-closure glaucoma—simpler answers to complex mechanisms: LXVI Edward Jackson memorial lecture. *Am J Ophthalmol*. 2009;148(5):657–669. e1.
- Greenfield DS, Tello C, Budenz DL, Liebmann JM, Ritch R. Aqueous misdirection after glaucoma drainage device implantation I. *Ophthalmology*. 1999;106(5):1035–40.
- Tello C, Chi T, Shepps G, Liebmann J, Ritch R. Ultrasound biomicroscopy in pseudophakic malignant glaucoma. *Ophthalmology*. 1993;100(9):1330–4.
- Carassa RG, Bettin P, Fiori M, Brancato R. Treatment of malignant glaucoma with contact transscleral cyclophotocoagulation. *Arch Ophthalmol*. 1999;117(5):688–90.
- Tsai JC, Barton KA, Miller MH, Khaw PT, Hitchings RA. Surgical results in malignant glaucoma refractory to medical or laser therapy. *Eye*. 1997;11(5):677.

51. Shahid H, Salmon JF. Malignant glaucoma: a review of the modern literature. *J Ophthalmol*. 2012;2012:852659.
52. Law SK, Kalenak JW, Connor TB, Pulido JS, Han DP, Mieler WF. Retinal complications after aqueous shunt surgical procedures for glaucoma. *Arch Ophthalmol*. 1996;114(12):1473–80.
53. Melamed S, Cahane M, Gutman I, Blumenthal M. Postoperative complications after Molteno implant surgery. *Am J Ophthalmol*. 1991;111(3):319–22.
54. Lin RC, Mieler WF. Management of retinal complications following glaucoma surgery. *Retin Physician*. 2007;4(3):33–5.
55. Ang GS, Varga Z, Shaarawy T. Postoperative infection in penetrating versus non-penetrating glaucoma surgery. *Br J Ophthalmol*. 2010;94(12):1571–6.
56. Vaziri K, Kishor K, Schwartz SG, et al. Incidence of bleb-associated endophthalmitis in the United States. *Clin Ophthalmol*. 2015;9:317.
57. Muckley ED, Lehrer RA. Late-onset blebitis/endophthalmitis: incidence and outcomes with mitomycin C. *Optom Vis Sci*. 2004;81(7):499–504.
58. Lemley CA, Han DP. Endophthalmitis: a review of current evaluation and management. *Retina*. 2007;27(6):662–80.
59. Chen PP, Gedde SJ, Budenz DL, Parrish RK. Outpatient treatment of bleb infection. *Arch Ophthalmol*. 1997;115(9):1124–8.
60. Busbee BG, Recchia FM, Kaiser R, Nagra P, Rosenblatt B, Pearlman RB. Bleb-associated endophthalmitis: clinical characteristics and visual outcomes. *Ophthalmology*. 2004;111(8):1495–503.
61. Waterhouse WJ, Lloyd MAE, Dugel PU, et al. Rhegmatogenous retinal detachment after Molteno glaucoma implant surgery. *Ophthalmology*. 1994;101(4):665–71.
62. Friberg T, Fanous M. Migration of intravitreal silicone oil through a Baerveldt tube into the subconjunctival space. *Semin Ophthalmol*. 2004;19(3–4):107–8.
63. Weinberg RS, Peyman GA, Huamonte FU. Elevation of intraocular pressure after pars plana vitrectomy. *Albrecht Von Graefes Arch Klin Exp Ophthalmol*. 1976;200(2):157–61.
64. Aaberg TM, Van Horn DL. Late complications of pars plana vitreous surgery. *Ophthalmology*. 1978;85(2):126–40.
65. Perez RN, Phelps CD, Burton TC. Angel-closure glaucoma following scleral buckling operations. *Trans Sect Ophthalmol Am Acad Ophthalmol Otolaryngol*. 1976;81(2):247–52.
66. Chang S. LXII Edward Jackson lecture: open angle glaucoma after vitrectomy. *Am J Ophthalmol*. 2006;141(6):1033–1043. e1.
67. Lincoff H, Coleman J, Kreissig I, Richard G, Chang S, Wilcox LM. The perfluorocarbon gases in the treatment of retinal detachment. *Ophthalmology*. 1983;90(5):546–51.
68. Honavar SG, Goyal M, Majji AB, Sen PK, Naduvilath T, Dandona L. Glaucoma after pars plana vitrectomy and silicone oil injection for complicated retinal detachments. *Ophthalmology*. 1999;106(1):169–77.
69. Jonas J, Kreissig I, Degenring R. Intraocular pressure after intravitreal injection of triamcinolone acetonide. *Br J Ophthalmol*. 2003;87(1):24–7.
70. Anderson NG, Fineman MS, Brown GC. Incidence of intraocular pressure spike and other adverse events after vitreoretinal surgery. *Ophthalmology*. 2006;113(1):42–7.
71. Mitchell P, Hourihan F, Sandbach J, Wang JJ. The relationship between glaucoma and myopia: the Blue Mountains Eye Study. *Ophthalmology*. 1999;106(10):2010–5.
72. Mitry D, Charteris DG, Fleck BW, Campbell H, Singh J. The epidemiology of rhegmatogenous retinal detachment: geographical variation and clinical associations. *Br J Ophthalmol*. 2010;94(6):678–84.
73. Pape LG, Forbes M. Retinal detachment and miotic therapy. *Am J Ophthalmol*. 1978;85(4):558–66.
74. Tranos P, Asaria R, Aylward W, Sullivan P, Franks W. Long term outcome of secondary glaucoma following vitreoretinal surgery. *Br J Ophthalmol*. 2004;88(3):341–3.
75. Smith JL. Retinal detachment and glaucoma. *Trans Am Acad Ophthalmol Otolaryngol*. 1963;67:726–32.
76. Kreiger AE, Hodgkinson BJ, Frederick AR Jr, Smith TR. The results of retinal detachment surgery. Analysis of 268 operations with a broad scleral buckle. *Arch Ophthalmol*. 1971;86(4):385–94.
77. Sebestyen JG, Schepens CL, Rosenthal ML. Retinal detachment and glaucoma: I. Tonometric and gonioscopic study of 160 cases. *Arch Ophthalmol*. 1962;67(6):736–45.
78. Pavlin CJ, Rutnin SS, Devenyi R, Wand M, Foster FS. Supraciliary effusions and ciliary body thickening after scleral buckling procedures. *Ophthalmology*. 1997;104(3):433–8.
79. Mowatt L. Secondary glaucoma after vitreoretinal procedures. In: *Glaucoma-current clinical and research aspects*. InTech, 2011.
80. Sato EA, Shinoda K, Inoue M, Ohtake Y, Kimura I. Reduced choroidal blood flow can induce visual field defect in open angle glaucoma patients without intraocular pressure elevation following encircling scleral buckling. *Retina*. 2008;28(3):493–7.
81. Friberg TR, Fourman SB. Scleral buckling and ocular rigidity: clinical ramifications. *Arch Ophthalmol*. 1990;108(11):1622–7.
82. Burton TC, Folk JC. Laser iris retraction for angle-closure glaucoma after retinal detachment surgery. *Ophthalmology*. 1988;95(6):742–8.
83. Kimura I, Shinoda K, Eshita T, Inoue M, Mashima Y. Relaxation of encircling buckle improved choroidal blood flow in a patient with visual field defect following encircling procedure. *Jpn J Ophthalmol*. 2006;50(6):554–6.
84. Sidoti PA, Minckler DS, Baerveldt G, Lee PP, Heuer DK. Aqueous tube shunt to a pre-existing episcleral encircling element in the treatment of complicated glaucomas. *Ophthalmology*. 1994;101(6):1036–43.
85. Smith MF, Doyle JW, Fanous MM. Modified aqueous drainage implants in the treatment of complicated glaucomas in eyes with pre-existing episcleral bands. *Ophthalmology*. 1998;105(12):2237–42.
86. Scott IU, Gedde SJ, Budenz DL, et al. Baerveldt drainage implants in eyes with a preexisting scleral buckle. *Arch Ophthalmol*. 2000;118(11):1509–13.
87. Koreen L, Yoshida N, Escariao P, et al. Incidence of, risk factors for, and combined mechanism of late-onset open-angle glaucoma after vitrectomy. *Retina*. 2012;32(1):160–7.
88. Wu L, Berrocal MH, Rodriguez FJ, et al. Intraocular pressure elevation after uncomplicated pars plana vitrectomy: results of the Pan American Collaborative Retina Study Group. *Retina*. 2014;34(10):1985–9.
89. Dalma-Weiszhausz J, Gordon-Angelozzi M, Ustariz-Gonzalez O, Suarez-Licona AM. Intraocular pressure rise during 25-gauge vitrectomy trocar placement. *Graefes Arch Clin Exp Ophthalmol*. 2008;246(2):187–9.
90. Wu P-C, Tiong S, Chuang Y-C, Kuo H-K. Twisting maneuver for sutureless vitrectomy trocar insertion to reduce intraoperative intraocular pressure rise. *Retina*. 2011;31(5):887–92.
91. Inoue T, Inatani M, Takihara Y, Awai-Kasaoka N, Ogata-Iwao M, Tanihara H. Prognostic risk factors for failure of trabeculectomy with mitomycin C after vitrectomy. *Jpn J Ophthalmol*. 2012;56(5):464–9.
92. Rososinski A, Wechsler D, Grigg J. Retrospective review of pars plana versus anterior chamber placement of Baerveldt glaucoma drainage device. *J Glaucoma*. 2015;24(2):95–9.
93. Vitrectomy with silicone oil or sulfur hexafluoride gas in eyes with severe proliferative vitreoretinopathy: results of a randomized clinical trial. *Silicone Study Report 1*. *Arch Ophthalmol*. 1992;110(6):770–9.
94. Vitrectomy with silicone oil or perfluoropropane gas in eyes with severe proliferative vitreoretinopathy: results of a randomized clinical trial. *Silicone Study Report 2*. *Arch Ophthalmol*. 1992;110(6):780–92.
95. Mills MD, Devenyi RG, Lam W-C, Berger AR, Beijer CD, Lam SR. An assessment of intraocular pressure rise in patients with gas-filled eyes during simulated air flight. *Ophthalmology*. 2001;108(1):40–4.
96. Toklu Y, Cakmak HB, Ergun SB, Yorgun MA, Simsek S. Time course of silicone oil emulsification. *Retina*. 2012;32(10):2039–44.
97. Ichhpujani P, Jindal A, Katz LJ. Silicone oil induced glaucoma: a review. *Graefes Arch Clin Exp Ophthalmol*. 2009;247(12):1585–93.
98. Unosson K, Stenkula S, Törnqvist P, Weijdegård L. Liquid silicone in the treatment of retinal detachment. *Acta Ophthalmol (Copenh)*. 1985;63(6):656–60.
99. de Corral LR, Cohen SB, Peyman GA. Effect of intravitreal silicone oil on intraocular pressure. *Ophthalmic Surg Lasers Imaging Retina*. 1987;18(6):446–9.
100. Watzke RC. Silicone retinopathy for retinal detachment: a long-term clinical evaluation. *Arch Ophthalmol*. 1967;77(2):185–96.
101. Laroche L, Pavlakis C, Saraux H, Orsel L. Ocular findings following intravitreal silicone injection. *Arch Ophthalmol*. 1983;101(9):1422–5.
102. Fleck B. How large must an iridotomy be? *Br J Ophthalmol*. 1990;74(10):583–8.

103. Madreperla SA, McCuen BW. Inferior peripheral iridectomy in patients receiving silicone oil: rates of postoperative closure and effect on oil position. *Retina*. 1995;15(2):87–90.
104. Beekhuis W, Ando F, Zivojnović R, Mertens D, Peperkamp E. Basal iridectomy at 6 o'clock in the aphakic eye treated with silicone oil: prevention of keratopathy and secondary glaucoma. *Br J Ophthalmol*. 1987;71(3):197–200.
105. Budenz DL, Taba KE, Feuer WJ, et al. Surgical management of secondary glaucoma after pars plana vitrectomy and silicone oil injection for complex retinal detachment. *Ophthalmology*. 2001;108(9):1628–32.
106. Nguyen QH, Lloyd MA, Heuer DK, et al. Incidence and management of glaucoma after intravitreal silicone oil injection for complicated retinal detachments. *Ophthalmology*. 1992;99(10):1520–6.
107. Hyung S-M, Min J-P. Subconjunctival silicone oil drainage through the Molteno implant. *Korean J Ophthalmol*. 1998;12(1):73–5.
108. Kiddee W, Trope GE, Sheng L, et al. Intraocular pressure monitoring post intravitreal steroids: a systematic review. *Surv Ophthalmol*. 2013;58(4):291–310.
109. Ansari EA, Ali N. Intraocular pressure following intravitreal injection of triamcinolone acetonide. *Open Ophthalmol J*. 2008;2:119.
110. Mowatt L. Secondary glaucoma after vitreoretinal procedures. In: Dalam: Pinakin Gunvant, editor. *Glaucoma—current clinical and research aspects*. United Kingdom: Intech; 2011. p. 361–72.
111. Pallikaris IG, Kymionis GD, Ginis HS, Kounis GA, Tsilimbaris MK. Ocular rigidity in living human eyes. *Investig Ophthalmol Vis Sci*. 2005;46(2):409–14.
112. Singh IP, Ahmad SI, Yeh D, et al. Early rapid rise in intraocular pressure after intravitreal triamcinolone acetonide injection. *Am J Ophthalmol*. 2004;138(2):286–7.
113. Fingert JH, Clark AF, Craig JE, et al. Evaluation of the myocilin (MYOC) glaucoma gene in monkey and human steroid-induced ocular hypertension. *Investig Ophthalmol Vis Sci*. 2001;42(1):145–52.
114. Ricci F, Missiroli F, Parravano M. Argon laser trabeculoplasty in triamcinolone acetonide induced ocular hypertension refractory to maximal medical treatment. *Eur J Ophthalmol*. 2006;16(5):756–7.
115. Rubin B, Taglienti A, Rothman RF, Marcus CH, Serle JB. The effect of selective laser trabeculoplasty on intraocular pressure in patients with intravitreal steroid-induced elevated intraocular pressure. *J Glaucoma*. 2008;17(4):287–92.

Ready to submit your research? Choose BMC and benefit from:

- fast, convenient online submission
- thorough peer review by experienced researchers in your field
- rapid publication on acceptance
- support for research data, including large and complex data types
- gold Open Access which fosters wider collaboration and increased citations
- maximum visibility for your research: over 100M website views per year

At BMC, research is always in progress.

Learn more biomedcentral.com/submissions

