

# The Synthetic Melanocortin (CKPV)<sub>2</sub> Exerts Anti-Fungal and Anti-Inflammatory Effects against *Candida albicans* Vaginitis via Inducing Macrophage M<sub>2</sub> Polarization

Hai-xia Ji<sup>1</sup>\*, Yu-lian Zou<sup>1</sup>\*, Jing-jing Duan<sup>1</sup>\*, Zhi-rong Jia<sup>1</sup>, Xian-jing Li<sup>1</sup>, Zhuo Wang<sup>1</sup>, Li Li<sup>2</sup>, Yong-wen Li<sup>2</sup>, Gen-yan Liu<sup>3</sup>, Ming-Qing Tong<sup>3</sup>, Xiao-yi Li<sup>5</sup>, Guo-hui Zhang<sup>5</sup>, Xiang-rong Dai<sup>5</sup>, Ling He<sup>1</sup>, Zhi-yu Li<sup>1\*</sup>, Cong Cao<sup>4\*</sup>, Yong Yang<sup>1\*</sup>

**1** State Key Laboratory of Natural Medicines, Academic Institute of Pharmaceutical Science, China Pharmaceutical University, Nanjing, Jiangsu, People's Republic of China, **2** Department of Pharmacology, Department of Physiology, Guilin Medical University, Guilin, Guangxi, People's Republic of China, **3** Department of Laboratory Medicine, the First Affiliated Hospital of Nanjing Medical University, Nanjing, Jiangsu, People's Republic of China, **4** Neuroscience Institute, Soochow University, Soochow, Jiangsu, People's Republic of China, **5** Hefei Zhaoke Pharmaceutical, Hefei, People's Republic of China

## Abstract

In this study, we examined anti-fungal and anti-inflammatory effects of the synthetic melanocortin peptide (Ac-Cys-Lys-Pro-Val-NH<sub>2</sub>)<sub>2</sub> or (CKPV)<sub>2</sub> against *Candida albicans* vaginitis. Our *in vitro* results showed that (CKPV)<sub>2</sub> dose-dependently inhibited *Candida albicans* colonies formation. In a rat *Candida albicans* vaginitis model, (CKPV)<sub>2</sub> significantly inhibited vaginal *Candida albicans* survival and macrophages sub-epithelial mucosa infiltration. For mechanisms study, we observed that (CKPV)<sub>2</sub> inhibited macrophages phagocytosis of *Candida albicans*. Meanwhile, (CKPV)<sub>2</sub> administration inhibited macrophage pro-inflammatory cytokines (TNF- $\alpha$ , IL-1 $\beta$  and IL-6) release, while increasing the arginase activity and anti-inflammatory cytokine IL-10 production, suggesting macrophages M1 to M2 polarization. Cyclic AMP (cAMP) production was also induced by (CKPV)<sub>2</sub> administration in macrophages. These above effects on macrophages by (CKPV)<sub>2</sub> were almost reversed by melanocortin receptor-1(MC1R) siRNA knockdown, indicating the requirement of MC1R in the process. Altogether, our results suggest that (CKPV)<sub>2</sub> exerted anti-fungal and anti-inflammatory activities against *Candida albicans* vaginitis probably through inducing macrophages M1 to M2 polarization and MC1R activation.

**Citation:** Ji H-x, Zou Y-l, Duan J-j, Jia Z-r, Li X-j, et al. (2013) The Synthetic Melanocortin (CKPV)<sub>2</sub> Exerts Anti-Fungal and Anti-Inflammatory Effects against *Candida albicans* Vaginitis via Inducing Macrophage M<sub>2</sub> Polarization. PLoS ONE 8(2): e56004. doi:10.1371/journal.pone.0056004

**Editor:** David M. Ojcius, University of California Merced, United States of America

**Received:** September 19, 2012; **Accepted:** January 4, 2013; **Published:** February 14, 2013

**Copyright:** © 2013 Ji et al. This is an open-access article distributed under the terms of the Creative Commons Attribution License, which permits unrestricted use, distribution, and reproduction in any medium, provided the original author and source are credited.

**Funding:** This work was supported by the National Natural Science Foundation of China (Nos. 91129731 and 81072661), the Project Program of State Key Laboratory of Natural Medicines, China Pharmaceutical University (No. JKGZ201102), the New Century Excellent Talents Program for YY supported by Ministry of Education of China (NCET-09-0771), the Natural Science Foundation of Jiangsu Province (No. BK2012025 and BK2011632), "Major Drug Discovery" science and technology major projects of China (No. 2011ZX09102-001-20). The funders had no role in study design, data collection and analysis, decision to publish, or preparation of the manuscript.

**Competing Interests:** XL and GZ are employed by Hefei Zhaoke Pharmaceutical. This does not alter the authors' adherence to all the PLOS ONE policies on sharing data and materials.

\* E-mail: valianty@hotmail.com (YY); caocong@suda.edu.cn (CC); zhiyu@263.net (ZL)

† These authors contributed equally to this work.

## Introduction

The common commensal Fungus *Candida albicans* cause systemic or mucocutaneous infections in abnormal immunity environments [1]. Vulvovaginal candidiasis (VVC) is a frequent mucosal infection caused by *Candida* species, which affects a number of women in child-bearing years. 75% of all women will experience at least one acute VVC infection during their lifetime, and 40%–50% of them could be infected twice or more. Several known predisposing factors including antibiotic, oral contraceptive usage, hormone replacement therapy, pregnancy, uncontrolled diabetes mellitus, and possible HIV infection increase the susceptibility of *Candida albicans* [2,3]. A small population of women (~5%–10%) has recurrent vulvovaginal candidiasis (RVVC) [4].

80%–90% VVC patients are treated with imidazole drugs, which can relieve symptoms and prevent inflammations. However, these drugs usually have side effects including itching, burning,

local allergic reactions and other possible off-target toxicities. Other medicines like Ketoconazole could potentially cause systemic toxicity to the patients, and therapeutic dose of triazole is not able to kill all *Candida* species [5–7].

Alpha-melanocyte-stimulating hormone ( $\alpha$ -MSH) is a neuroendocrine-immune regulatory peptide. It is composed of 13 peptides (N-Acetyl-Ser-Tyr-Ser-Met-Glu-His-Phe-Arg-Trp-Gly-Lys-Proval-NH<sub>2</sub>). Recent literatures have studied its anti-microbial [8–10] and anti-inflammatory effects [11–13]. There are at least five  $\alpha$ -MSH receptors, namely melanocortin receptor1–5 (MC1–5R). When activated, these G protein-coupled receptors (GPCR) stimulate adenylyl cyclase (AC), and induce intracellular cyclic AMP (cAMP) production.  $\alpha$ -MSH is known to bind to all melanocortin receptors with strong affinities except MC2R [14].

$\alpha$ -MSH shows significant anti-microbial and anti-inflammatory effects. In macrophages,  $\alpha$ -MSH activates MC1R and inhibits lipopolysaccharide (LPS)-induced nuclear factor  $\kappa$ B (NF- $\kappa$ B)

**Table 1.** Mouse MC1R siRNA duplex sequences.

Name	Reference No	Sense sequence (5'-3')	Antisense sequence (5'-3')
GAPDH	–	CACUCAAGAUUGUCAGCAATT	UUGCUGACAAUCUUGAGUGAG
MC1R-siRNA(S1)	Mc1r-mus-1243	GCUGCAUCUUAAGAACUUTT	AAGUUCUUGAAGAUGCAGCTT
MC1R-siRNA(S2)	Mc1r-mus-949	GCACCCUCUUUAUACCUATT	UAGGUGAUAAAGAGGGUGCTT
MC1R-siRNA(S3)	Mc1r-mus-694	GUGCUGGAGACUACUAUCATT	UGAUAGUAGUCUCCAGCACTT
Negative control(NC)	–	UUCUCCGAACGUGUCACGUTT	ACGUGACACGUUCGGAGAATT

doi:10.1371/journal.pone.0056004.t001

activation [15]. Similarly,  $\alpha$ -MSH<sub>11–13</sub>(KPV), the C-terminal tripeptide of  $\alpha$ -MSH, also has a wide range of anti-microbial and anti-inflammatory activities. However, KPV could inhibit inflammation with no cAMP accumulation, suggesting that its anti-inflammatory effects may not be solely dependent on MCRs [16].

(CKPV)<sub>2</sub>, (Ac-Cys-Lys-Pro-Val-NH<sub>2</sub>)<sub>2</sub>, similar to  $\alpha$ -MSH in structure [17], is synthesized by inserting a Cys-Cys linker between the two units of KPV. Catania et al., first showed its excellent anti-Candidacidal effects [18], following studies focused on its anti-inflammatory effects. In a mouse model peritonitis-induced by LPS, (CKPV)<sub>2</sub> administration markedly decreased circulating TNF- $\alpha$  and NO<sub>2</sub><sup>-</sup> in plasma and peritoneal cavity [19]. *In vivo* and *in vitro* experiments demonstrated that (CKPV)<sub>2</sub> could prevent human neutrophils migration, reactive oxygen intermediate (ROI) production, pro-inflammatory cytokines (interleukin 1 $\beta$  or IL-1 $\beta$ , tumor necrosis factor or TNF- $\alpha$ ) secretion and adhesion molecules (ICAM-1) expression [10,20,21]. The fact that cAMP inhibitor abolished (CKPV)<sub>2</sub>'s effects on chemo-taxis and respiratory burst [20] suggests that the anti-inflammatory activity of (CKPV)<sub>2</sub> may be dependent on MCRs, as similar to  $\alpha$ -MSH.

Macrophages serve as essential sentinels in innate immunity and effectors in the transition to adaptive immunity. Macrophages participate in immune regulation and tissue repair depending on the environmental status. They present various activated types ranging from classically activated M1 macrophages to alternatively activated M2 macrophages [22]. M1 macrophages are associated with the expression of inflammatory factors, such as interleukin 1 $\beta$  (IL-1 $\beta$ ), IL-12, inducible nitric oxide synthase (iNOS), and have considerable roles in counteracting microbial product [22]. On the other hand, M2 macrophages secrete anti-inflammatory mediators in response to wound healing, host defense against inflammation [22]. In our study, we found that (CKPV)<sub>2</sub> not only played a Candidacidal role in rat *Candida albicans* vaginitis, but also induced anti-inflammatory effects by inducing macrophages M2 polarization, activation of MC1R appeared is involved in the process.

## Materials and Methods

### Reagents

(CKPV)<sub>2</sub> and  $\alpha$ -MSH were synthesized and provided by Hefei Zhaoke Pharmaceutical Co. Ltd.

### Primary Culture of Mouse Peritoneal Macrophages

Primary culture of mouse peritoneal macrophages was similar as previously described [23], the generation of macrophages was induced by intra-peritoneal injection 3 mL of 3% thioglycolate (Sigma Aldrich Fluka, USA) dissolved in phosphate-buffered saline (PBS). After three days, the mice were sacrificed, immersed with 75% ethanol for 2–3 minutes, immobilized on the autopsy table.

The abdominal skin was exposed and 5 ml of PBS was injected into the peritoneal cavity and gently knead for 1–2 min, abdominal membrane was lift by forceps and leaned to one side to focus the fluid in the abdomen. The primary mouse peritoneal macrophages suspension were collected into tubes and centrifuged at 1000 rpm at 4°C for 5 minutes, the supernatant was then removed. The cells were further washed and suspended (10<sup>6</sup>/ml) with DMEM complete culture medium which contain 10% fetal calf serum (FCS) with penicillin/streptomycin. They were incubated at 37°C for 2 h and the adherent cells were macrophages.

### *Candida Albicans* Colony Formation

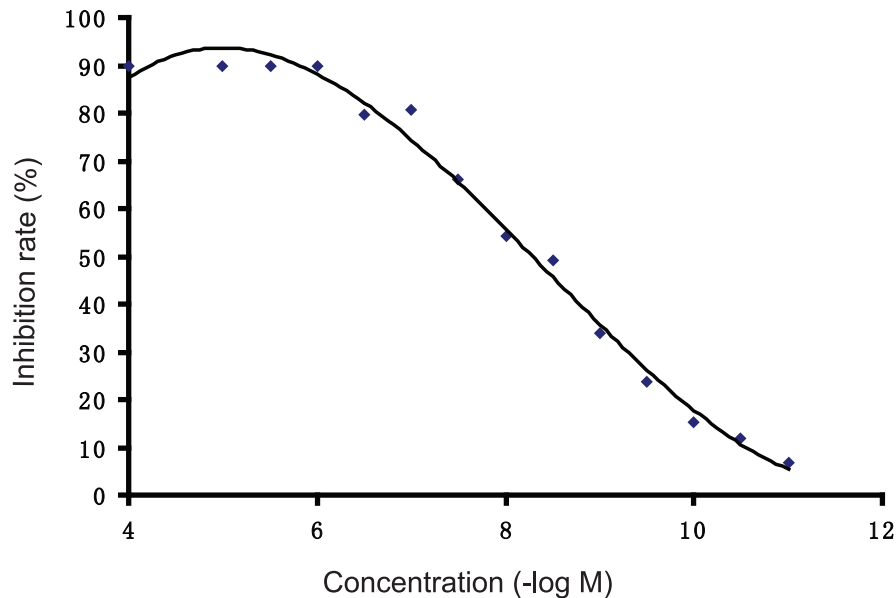
*Candida albicans* (from Jiangsu Province Hospital, Nanjing, China) were cultured in 5 ml liquid Luria-Bertani (LB) medium and amplified for 12–16 hours, washed twice with distilled water, suspended in liquid LB medium to a final concentration of 10<sup>7</sup>/ml and incubated at 30°C for 2 hours in the presence of different concentrations of (CKPV)<sub>2</sub> or vehicle control. To determine the inhibitory effect of (CKPV)<sub>2</sub>, the *Candida albicans* in the absence and presence of (CKPV)<sub>2</sub> were inoculated to Sabouraud medium and cultured at 30°C for 48 h. The amounts of colonies and the inhibition rate were calculated as previously reported [3,8,9].

### Rat *Candida Albicans* Vaginitis

Sixty female SD rats, weighing 180–220 g, were maintained in pseudo-estrus by intragastric administration of estradiol valerate (0.8 mg/kg) per day. Four days after first administration, the rats were inoculated intravaginally with 4×10<sup>7</sup> yeast cells (0.1 ml) according to established procedures [24–26]. To assess the anti-fungal activity of (CKPV)<sub>2</sub>, the rats were treated with blank matrix gel (0.2 ml/rat), miconazole gel (0.5 mg/kg),  $\alpha$ -MSH gel (1.7 mg/kg) or (CKPV)<sub>2</sub> gel (2, 1 and 0.5 mg/kg) respectively per day. Vaginal fluid was collected from each animal at 0, 3, 11, 18 days after administration to calculate the colony forming units (CFUs). At the end of the experiments, all the rats were sacrificed and their vaginal tissues were dissociated for immunohistochemistry examination. This study was carried out in strict accordance with the recommendations in the Guide for the Care and Use of Laboratory Animals of the NSFC. The protocol was approved by the Committee on the Ethics of Animal Experiments of the Nanjing Pharmaceutical University. All surgery was performed under proper anesthesia, and all efforts were made to minimize suffering.

### Immunohistochemistry

Formalin-fixed paraffin-embedded vaginal tissue samples were used for analysis of macrophages infiltration as previously described [27]. Anti-CD68 (ab31630, dilution 1:200; Abcam, Cambridge) Anti-CD163 (ab119996, dilution 1:250, Abcam,



**Figure 1. (CKPV)<sub>2</sub>'s inhibits *Candida albicans* SA-40 colonies formation.** The inhibitory rate of different concentrations of (CKPV)<sub>2</sub> against *Candida albicans* SA-40 in vitro. *Candida albicans* were incubated with PBS (vehicle control) or indicated concentration of (CKPV)<sub>2</sub> ( $10^{-11}$  M,  $3 \times 10^{-10}$  M,  $10^{-10}$  M,  $3 \times 10^{-9}$  M,  $10^{-9}$  M,  $3 \times 10^{-8}$  M,  $10^{-8}$  M,  $3 \times 10^{-7}$  M,  $10^{-7}$  M,  $3 \times 10^{-6}$  M,  $10^{-6}$  M,  $3 \times 10^{-5}$  M,  $10^{-5}$  M and  $10^{-4}$  M) at 30°C for 2 h, afterwards, *Candida albicans* were transferred to Sabouraud medium and cultured at 30°C for 48 h. The inhibitory ratio(%)=the CFUs of *Candida albicans* treated with PBS  $\times 100$ . Experiments in this figure were repeated at least three times and similar results were obtained.

doi:10.1371/journal.pone.0056004.g001

Cambridge) were applied to label CD68 and CD163 as makers for M1 and M2 macrophages separately. The immune-fluorescence images were captured on a LEICA DMI3000 B confocal microscope, using 10 $\times$  and 40 $\times$  objective.

#### **Candida Albicans Phagocytosis by Activated Peritoneal Macrophages**

The macrophages were seeded into 24-well plates ( $2 \times 10^5$ /well) for 4 h and incubated with PBS, LPS (5 ng/ml)/IFN- $\gamma$  (10 ng/ml),  $\alpha$ -MSH ( $10^{-6}$  M) or indicated concentration of (CKPV)<sub>2</sub> respectively for 24 h. Heat-inactivated *Candida albicans* were washed twice with PBS, centrifuged at 1000 rpm for 5 min and stained with Giemsa dye reagent (Jiancheng Technology Co. Ltd, Nanjing, China). The suspension containing  $2 \times 10^7$  *Candida albicans* was added to each well containing macrophages. The plates then were carefully incubated at 37°C for 1 h. After extensively washes, the number of cells engulfed Giemsa dye stained- *Candida albicans* was recorded under the microscope [28].

#### **MC1R Exogenously Expression in COS-7 Cells**

Mouse MC1R cDNA extracted from B16-F10 cells (ATCC, Maryland, USA) was sub-cloned into Amp<sup>+</sup> enhancer and promoter reporter vector PRL14.4 to yield PRL14.4-MC1R. Then the MC1R gene was transferred into Phage transfer vector pGEM-T4. The recombinant plasmid was transfected into COS-7 cells as previously described [29,30].

#### **MC1R RNA Interference (RNAi)**

The chemically synthesized MC1R siRNA (small interfering RNA) duplexes (Tab. 1) against mouse MC1R (s1, s2 and s3) were purchased from Ambion (GenePharm Co. Ltd. Shanghai, China). The primary cultured macrophages were plated in 24-well plates ( $2.5 \times 10^5$ /well). After 4 h, siRNA was transfected into cells with

Lipofectamine 2000 according to the manufacturer's protocol (Invitrogen). 48 hours after transfection, the mRNA level of MC1R in transfected cells was detected to test RNAi efficiency [15,31].

#### **cAMP Assay**

The primary cultured macrophages were seeded in 24 well plates in DMEM supplemented with 10% FCS and incubated at 37°C for 2 hours for adhesion. Thirty min after indicated treatment/s [32,33], the cells were lysed with 0.1 M HCl for 20 min. The cAMP levels were determined with mouse cyclic adenosine monophosphate (cAMP) ELISA Kit (Abcam, UK) based on the manufacturer's protocol.

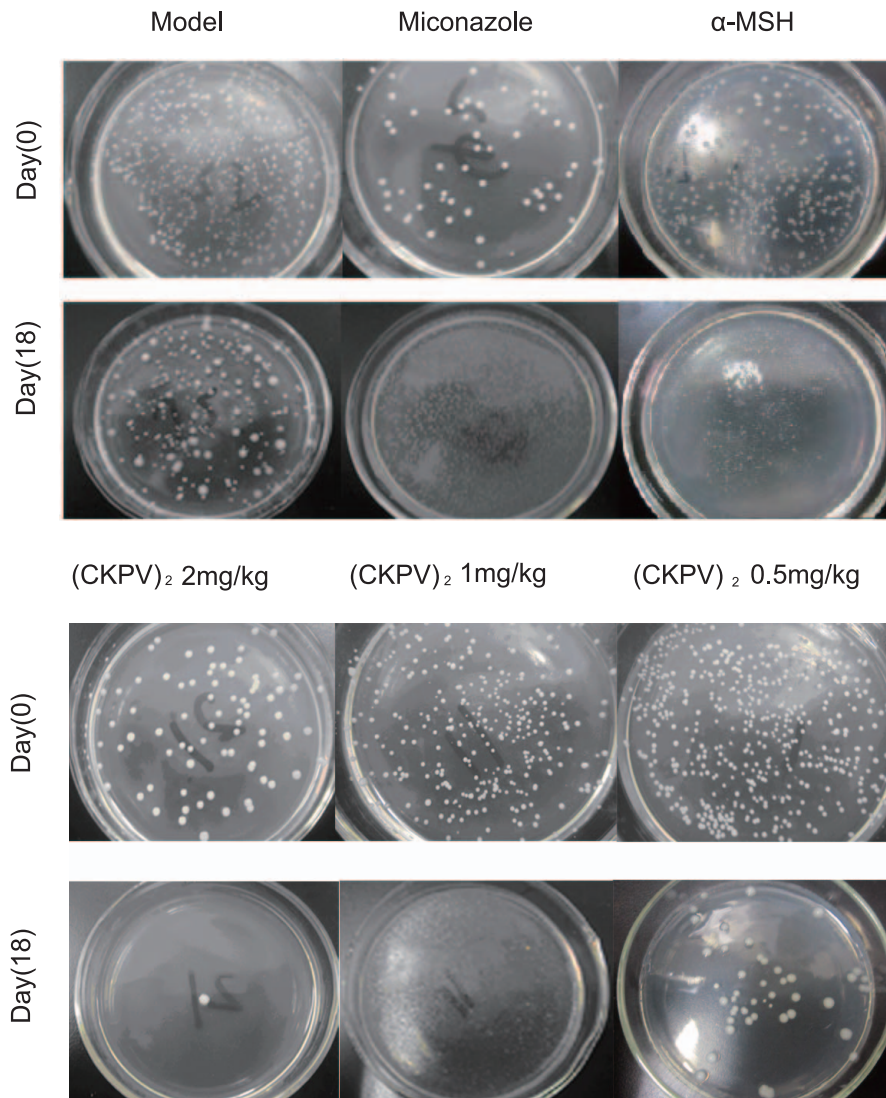
#### **TNF- $\alpha$ Cytotoxicity Assay**

The supernatant (100  $\mu$ l/well) of the macrophages after indicated treatment/s was added to L929 cells for 20 h [34,35]. MTT (3-(4,5-dimethylthazol-2-yl)-2,5-diphenyltetrazolium bromide) salt (0.25 mg/ml) was added to each well. Afterwards, L929 cells were further incubated in CO<sub>2</sub> incubator for 4 hours at 37°C, 100  $\mu$ l of DMSO was then added to dissolve formazan crystals and the absorbance of each well was observed by a plate reader at a test wavelength of 570 nm. The OD value was normalized to untreated vehicle control group.

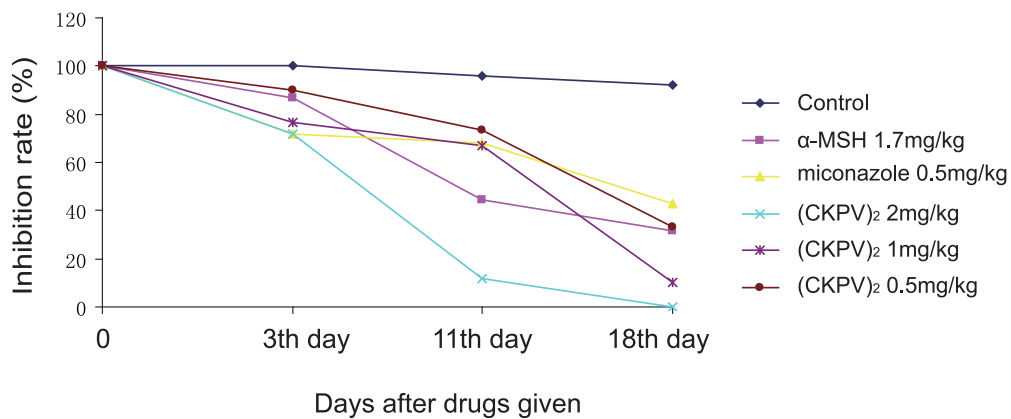
#### **Arginase Activity Assay**

Triton X-100 (0.1%, 100  $\mu$ l) was added to the macrophages with indicated treatment/s. After 30 min incubation, tris-HCl and MnCl<sub>2</sub> mixture (100  $\mu$ l) were added to cells at 56°C for 10 min. The plates were incubated with L-arginine (100  $\mu$ l) at 37°C for 30 min, and then H<sub>2</sub>SO<sub>4</sub>/H<sub>3</sub>PO<sub>4</sub>/H<sub>2</sub>O mixture (800  $\mu$ l) was added and heated with  $\alpha$ -isopropylidene nitrobenzene acetone (50  $\mu$ l) at 95°C for 30 min. The complex in each well was diluted

A



B



**Figure 2. (CKPV)<sub>2</sub> inhibits *Candida albicans* in a rat vaginitis model.** (A) The CFUs of *Candida albicans* at day 0 and day 18 after indicated treatment. (B) The inhibitory ratio of (CKPV)<sub>2</sub> to *Candida albicans* survival. The survival ratio (%) was calculated by the number of surviving colonies after indicated drug treatment divided by the number of colonies before treatment. Experiments in this figure were repeated three times and similar results were obtained.  
doi:10.1371/journal.pone.0056004.g002

**Table 2.** The effects of (CKPV)<sub>2</sub> on Candida albicans in rat vaginitis (n = 6).

Group	Doses (mg/kg)	CFUs, Mean degree and Survival ratio(%) of C.albicans on day(X)											
		0			3			11			18		
		CFUs	Mean degree	Survival ratio(%)	CFUs	Mean degree	Survival ratio(%)	CFUs	Mean degree	Survival ratio(%)	CFUs	Mean degree	Survival ratio(%)
Control	-	>200	2.5	100.0	>200	2.5	100.0	>200	2.4	96.0	>200	2.3	92.0
Miconazole	0.5	>200	3.8	100.0	>200	3.3	86.8	150	1.7	44.7	80	1.2	31.6
α-MSH	1.7	100	2.5	100.0	79	1.8	72.0	77	1.7	68.0	43	1.2	42.9
(CKPV) <sub>2</sub>	2	>200	2.5	100.0	39	1.8	72.0	10	0.3	12.0	1	0.0	0.0
(CKPV) <sub>2</sub>	1	386	3.0	100.0	123	2.3	76.7	55	2.0	66.7	8	0.3	10.0
(CKPV) <sub>2</sub>	0.5	262	3.0	100.0	105	2.7	90.0	283	2.2	73.3	24	1.0	33.3

At day 0, 3, 11 and 18 after indicated treatment (per day), vaginal was lavaged with 100 μl PBS, afterwards, the lavage was transferred to Sabouraud medium after dilution of 1:1000 and cultured at 30°C for 48 h. Colonies forming units (CFUs) were recorded and classified according to the following standard: the number of colonies >1000, degree 4; 100–1000, degree 3; 10–100, degree 2; 5–10, degree 1; <5, degree 0.

doi:10.1371/journal.pone.0056004.t002

20 times with PBS to detect the optical density (OD) values at 540 nm with a UV spectrophotometer [36,37].

#### IL-1β, IL-6 and IL-10 ELISA assay

The macrophages supernatant was collected 24 hours after indicated treatment/s. TNF-α, IL-1β, IL-6 and IL-10 levels were determined via double antibodies sandwich ABC-ELISA kits from R&D Systems (Minneapolis, USA) according to the manufacturer procedures.

#### Statistical Analysis

Individual culture dishes or wells were analyzed separately (no pooling of samples was used). In each experiment a minimum of six wells/dishes of each treatment was used. Each experiment was repeated a minimum of three times. In each experiment, the mean value of the repetitions was calculated and this value was used in the statistical analysis. Data are presented as mean ± SEM. The differences were determined by one-way ANOVA in appropriate experiments followed by Newman–Keuls *post hoc* test. A probability value of  $p < 0.05$  was taken to be statistically significant.

## Results

### (CKPV)<sub>2</sub> inhibits Candida Albicans SA-40 Colonies Formation

To detect whether (CKPV)<sub>2</sub> has the capacity to inhibit the Candida albicans directly, we first examined the anti-fungal effects of (CKPV)<sub>2</sub> *in vitro*. Results in Fig. 1 showed that (CKPV)<sub>2</sub> dose-dependently inhibited Candida albicans colonies formation. The fungistatic rate was up to 50% and 90% after  $3 \times 10^{-8}$  M and  $10^{-6}$  M (CKPV)<sub>2</sub> exposure respectively (Fig. 1). These results suggest that (CKPV)<sub>2</sub> could directly inhibit Candida albicans SA-40.

### (CKPV)<sub>2</sub> Inhibits Candida Albicans in a Rat Vaginitis Model

A rat Candida albicans vaginitis model was applied to study the anti-fungal activities of (CKPV)<sub>2</sub> *in vitro*. Results showed that (CKPV)<sub>2</sub> administration exerted significant anti-Candida albicans vaginitis effects. (CKPV)<sub>2</sub> at 2 mg/kg showed the strongest inhibition against vaginal Candida albicans, as the survival of Candida albicans dropped to 12.0% at the 11th day of the treatment, while the survival rate of miconazole (0.5 mg/kg)-

treated group was 44.7%. At the 18th day of treatment, the survival rate of vaginal Candida albicans of (CKPV)<sub>2</sub> (2 mg/kg)-treated group was close to 0% (Fig. 2). The results suggested that (CKPV)<sub>2</sub> were more effective against Candida albicans vaginitis than α-MSH or miconazole (Tab. 2, Fig. 2).

### In a Rat Vaginitis Model, (CKPV)<sub>2</sub> Promotes Infiltrated Macrophage M2 Polarization

Studies have been focusing on the underlying mechanism by which host responses to Candida albicans infections. Infiltration of inflammatory cells, mainly polymorphonuclear leukocytes and macrophages, and/or some lymphocytes has been proposed. These infiltrated inflammatory cells response to microorganism invasion via secreting multiple cytokines to trigger inflammation. To determine the anti-inflammatory effect of (CKPV)<sub>2</sub>, we again employed rat models of experimental vaginitis. The vaginal fungal burden (in CFU) was measured as the indicator of the level of infections, the mucosa infiltrate immune cells after Candida albicans infection were examined via immunohistochemistry [38,39]. Our results showed that the infiltrated immune cells in model group were mainly M1 macrophages (CD 68 positive) with few M2 (CD 163 positive) macrophages. On the other hand, in the (CKPV)<sub>2</sub>-treated group, M2 macrophages (CD 163 positive) were the main infiltrated cells (Fig. 3), indicating that (CKPV)<sub>2</sub>'s anti-inflammatory effects may through inducing macrophages M1 to M2 polarization.

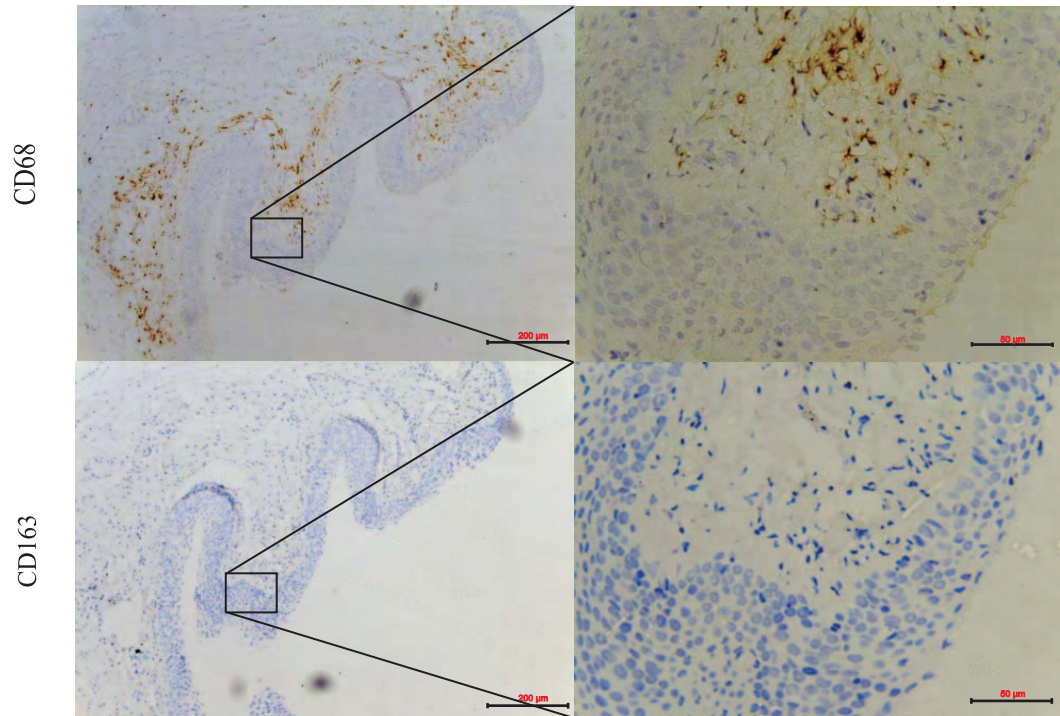
### (CKPV)<sub>2</sub> Inhibits Macrophages Phagocytosis of Candida Albicans

To study the underlying mechanism of (CKPV)<sub>2</sub>-induced anti-fungal and anti-inflammatory effects against Candida albicans, we examined (CKPV)<sub>2</sub>'s effects on primary cultured macrophages. We found that both α-MSH and (CKPV)<sub>2</sub> significantly inhibited Candida albicans phagocytosis by interferon γ (IFN-γ)/LPS-activated macrophages (Fig. 4), suggesting that (CKPV)<sub>2</sub> directly inhibits phagocytosis ability of primary cultured macrophages.

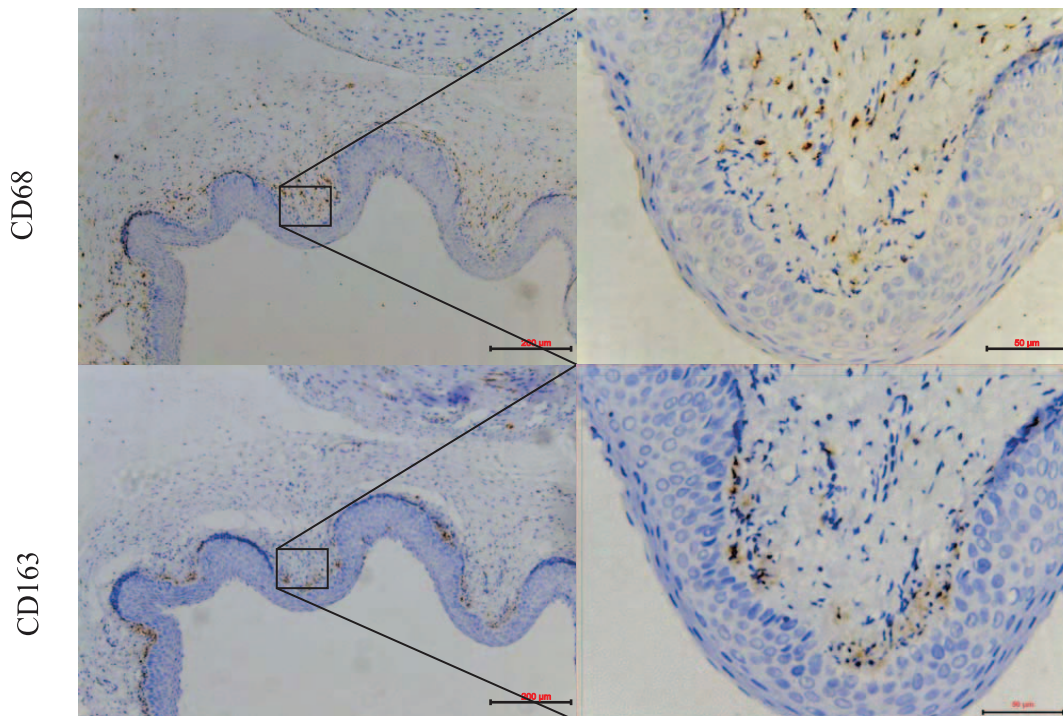
### (CKPV)<sub>2</sub> Promotes cAMP Production via MC1R

Studies have shown that melanocortin peptides cause cAMP production via activating melanocortin receptor-1 (MC1R) in macrophages. We then examined whether (CKPV)<sub>2</sub> had the similar effects. Results showed that the cAMP level was

Model

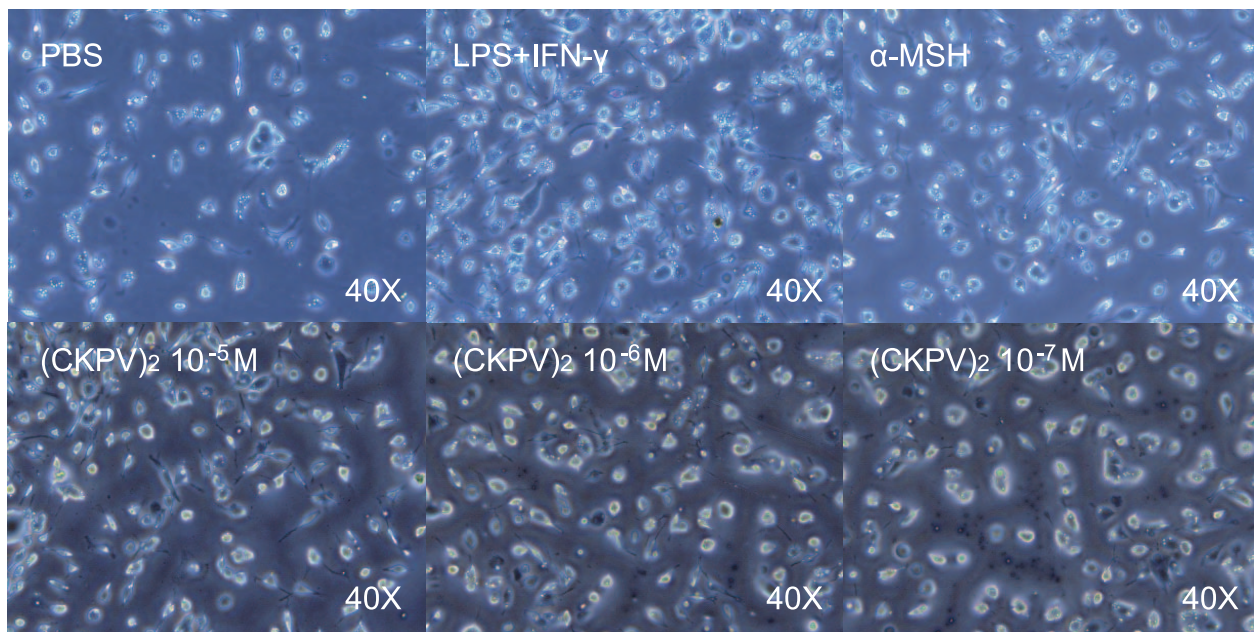


(CKPV)<sub>2</sub>

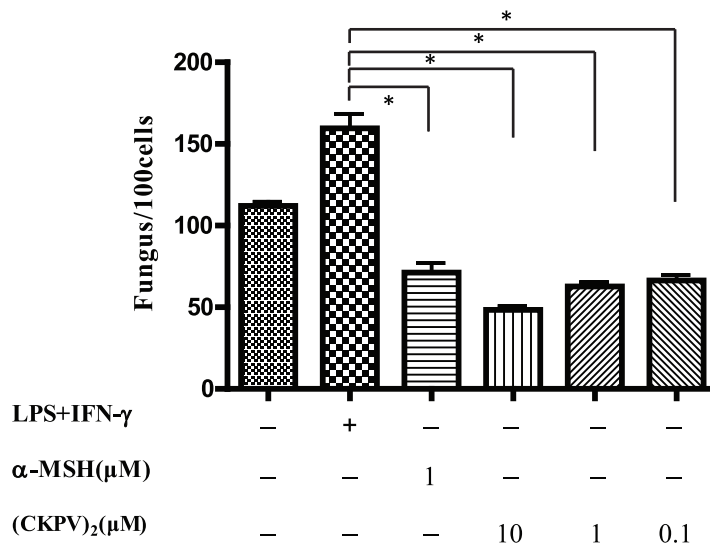


**Figure 3. In a rat vaginitis model, (CKPV)<sub>2</sub> promotes infiltrated macrophage M2 polarization.** CD68 and CD163 staining in the vehicle control (upper panel) and (CKPV)<sub>2</sub>-treated (lower panel) group. Bar = 50 μm (Left); Bar = 200 μm (Right). Experiments in this figure were repeated three times and similar results were obtained.  
doi:10.1371/journal.pone.0056004.g003

A



B



**Figure 4. (CKPV)<sub>2</sub> inhibits macrophages phagocytosis of *Candida albicans*.** (A) The macrophage cells (wide arrow) were polygonal shape stretching and *Candida albicans* (tiny arrow) were dyed bright blue by Wright-Ji Musa in inverted microscope. (Magnification: 40). The number of cells and engulfed microorganism were recorded in 10 random views under the microscope. (B) The phagocytosis index (number of engulfed fungus/100 cells) of macrophages with indicated treatment. \* $p < 0.01$  (ANOVA). Experiments in this figure were repeated three times and similar results were obtained.

doi:10.1371/journal.pone.0056004.g004

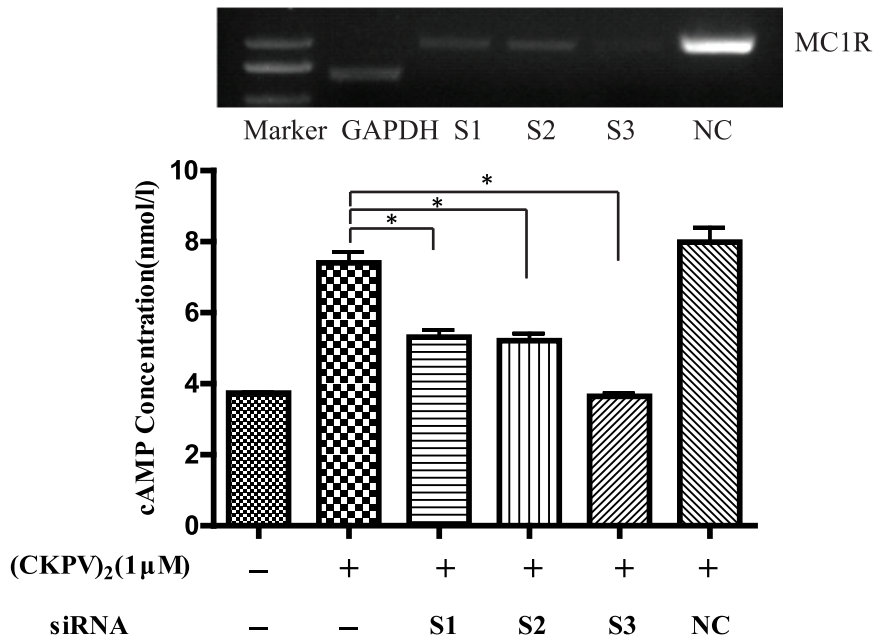
significantly augmented in primary cultured macrophages after (CKPV)<sub>2</sub> treatment. To demonstrate the role of MC1R in this process, we applied target siRNAs to effectively knockdown MC1R in macrophages (Fig. 5A). Results showed that knockdown of MC1R by target siRNAs (S1, S2 and S3) (see RNAi sequence in Tab. 1) significantly reduced (CKPV)<sub>2</sub>-induced cAMP production in macrophages (Fig. 5A). However, no cAMP was induced in MC1R-null COS-7 cells after (CKPV)<sub>2</sub> exposure. On the other hand, cAMP level was increased in COS-7 cells exogenously expressing MC1R.

(Fig. 5B). These results together suggest that (CKPV)<sub>2</sub> promotes cAMP production via MC1R.

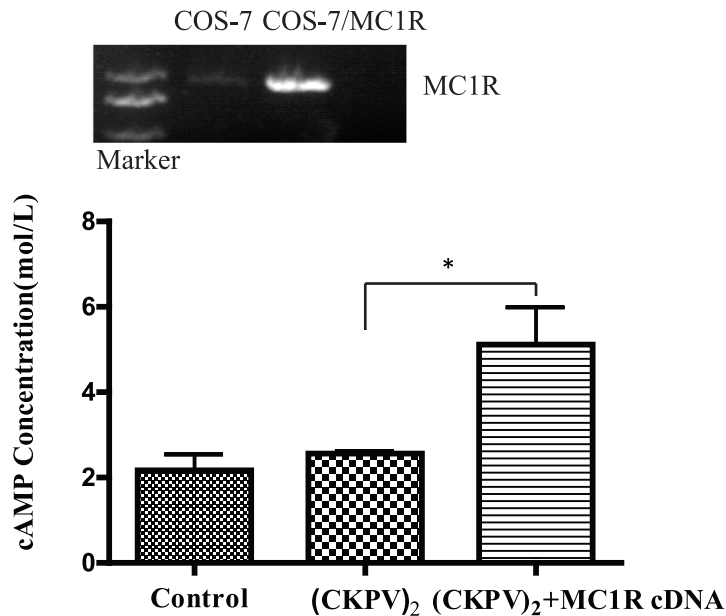
#### (CKPV)<sub>2</sub> Induces Macrophage M1 to M2 Polarization

Macrophage M1 to M2 polarization involves a reduction in expression of pro-inflammatory cytokines, together with an increase of IL-10 secretion and arginase activity [40]. Here, we observed that LPS/IFN- $\gamma$ -induced TNF- $\alpha$  production was almost blocked by co-administration with (CKPV)<sub>2</sub> in primary cultured macrophages, as the cytotoxicity of (CKPV)<sub>2</sub>-treated macrophages

A



B

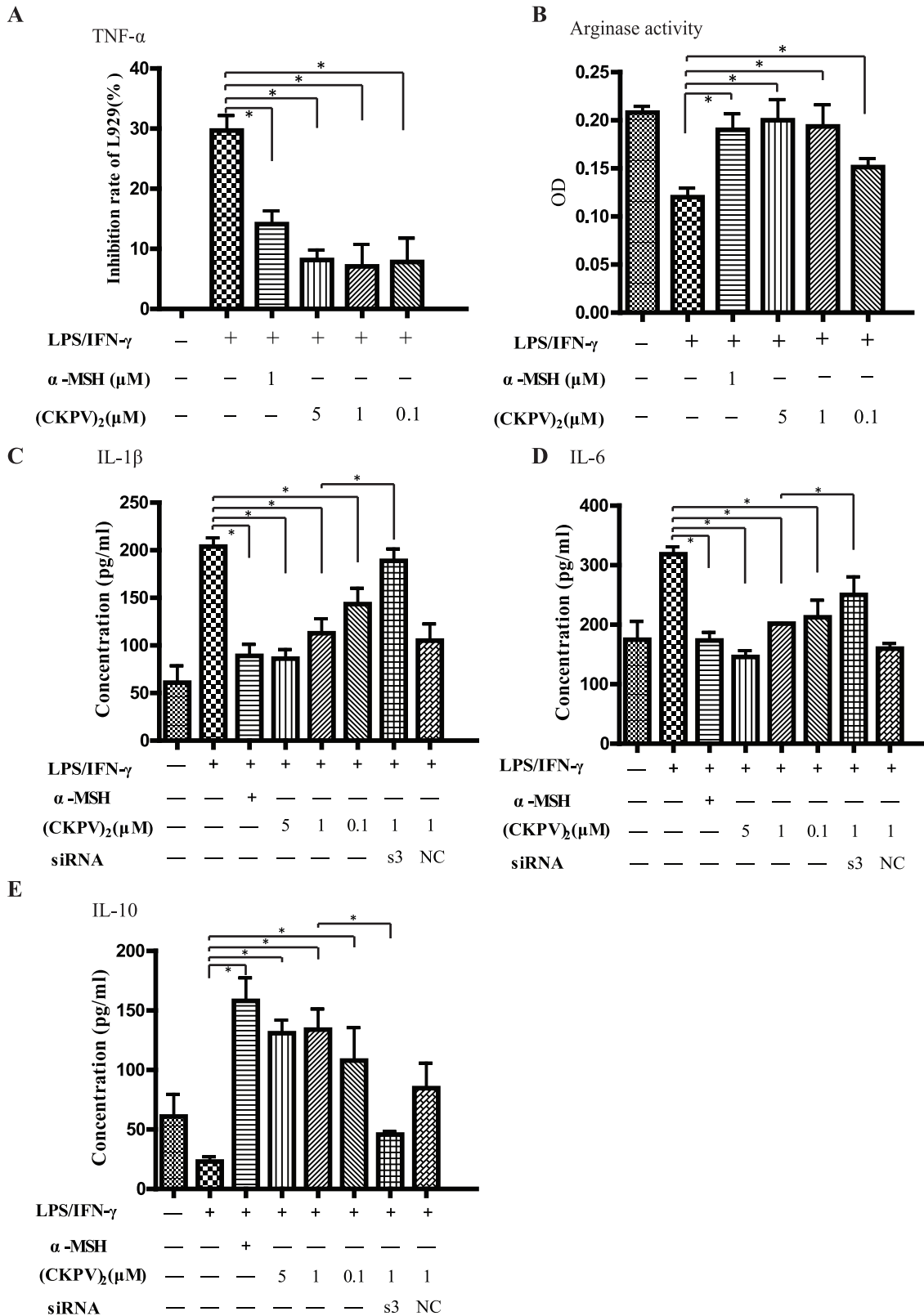


**Figure 5. (CKPV)<sub>2</sub> promotes cAMP production via MC1R.** (A) Upper panel: the effects of MC1R siRNA (S1, S2 and S3, see sequence on Tab. 1) on MC1R mRNA level in primary cultured macrophages. Lower panel: MC1R siRNA knockdown almost blocked (CKPV)<sub>2</sub>-induced cAMP production in macrophages. (B) Upper panel, RT-PCR results confirms (CKPV)<sub>2</sub> mRNA expression in MC1R cDNA-transfected COS-7 cells (COS-7/MC1R) or nonsense-cDNA-transfected control cells (COS-7). Lower panel: (CKPV)<sub>2</sub>-induced cAMP production in negative control-cDNA-transfected (NC) or MC1R cDNA-transfected COS-7 cells. \**p*<0.01 (ANOVA). Experiments in this figure were repeated three times and similar results were obtained. doi:10.1371/journal.pone.0056004.g005

supernatant to L929 cells decreased significantly (Fig. 6A). The secretion of inflammatory cytokines including IL-1 $\beta$  and IL-6 was also inhibited after (CKPV)<sub>2</sub> administration (Fig. 6C and D). Importantly, macrophage IL-10 production and arginase activity, the indicators of M2 polarization, were significantly increased by (CKPV)<sub>2</sub> (Fig. 6B and E). Notably, (CKPV)<sub>2</sub>'s effects on cytokines

production were almost blocked by MC1R siRNA knockdown, suggesting that MC1R was required for (CKPV)<sub>2</sub> effects on macrophages (Fig. 6C–E). It should be noted that  $\alpha$ -MSH had similar effects on macrophages as (CKPV)<sub>2</sub> (Fig. 6). Based on these data, we summarized that (CKPV)<sub>2</sub> inhibited pro-inflammatory cytokines (TNF- $\alpha$ , IL-1 $\beta$  and IL-6) production while increasing





**Figure 6. (CKPV)<sub>2</sub> induces macrophage M1 to M2 polarization.** Cytokine release profile (IL-1 $\beta$ , IL-6 and IL-10) and arginase activity after indicated treatment/s in primary cultured macrophages transfected with or without MC1R RNAi. LPS:5 ng/ml, IFN- $\gamma$ :10 ng/ml,  $\alpha$ -MSH: 10  $\mu$ M, and (CKPV)<sub>2</sub> (0.1, 1 and 5  $\mu$ M) (B–E). The supernatant of the above macrophages were collected and added to L929 cells, after 20 hours, cell viability was measured by MTT assay, the inhibitory rate was calculated by 100%-cell viability OD of treatment group/cell viability OD of untreated control group (A). \* $p$ <0.01 (ANOVA). Experiments in this figure were repeated three times and similar results were obtained.  
doi:10.1371/journal.pone.0056004.g006

arginase activity and the secretion of IL-10 to favor a macrophage M1 to M2 polarization.

### Anti-acute Inflammatory Effects of (CKPV)<sub>2</sub>

Above results confirmed the potential anti-fungal effects of (CKPV)<sub>2</sub>, we also tested (CKPV)<sub>2</sub>'s potential role in other inflammation models including mouse ear edema, rat paw edema and rat foot itching (see protocol in text S1). Results were included in Fig. S1. The mice right ears became evident swelling and flare after xylene administration. Dexamethasone,  $\alpha$ -MSH and (CKPV)<sub>2</sub> significantly suppressed these inflammation reactions (Fig. S1-A). Subcutaneous injection of albumen into right paw caused immediate and persistent edema with the peak at 0.5 h–1 h. Dexamethasone,  $\alpha$ -MSH and (CKPV)<sub>2</sub> (high and middle doses) relieved paw edema (Fig. S1-B). Phosphate-induced itching was also blocked by dexamethasone,  $\alpha$ -MSH and (CKPV)<sub>2</sub> (high and middle doses) (Fig. S1-C), these results together suggest that (CKPV)<sub>2</sub> could effectively prevent above acute inflammations.

### Discussion and Conclusions

Our results showed that (CKPV)<sub>2</sub> dose-dependently inhibited *Candida albicans* colonies formation. In a rat *Candida albicans* vaginitis model, (CKPV)<sub>2</sub> administration significantly inhibited vaginal *Candida albicans* survival and induced macrophage M<sub>2</sub> polarization. (CKPV)<sub>2</sub> inhibited *Candida albicans* phagocytosis by primary cultured macrophages. Further, (CKPV)<sub>2</sub> promoted macrophages cAMP production through activating MC1R. In macrophages, (CKPV)<sub>2</sub> administration inhibited the production of pro-inflammatory cytokines including TNF- $\alpha$ , IL-1 $\beta$  and IL-6, while increasing arginase activity and the secretion of anti-inflammatory cytokines (IL-10), favoring a M1 to M2 polarization. These effects by (CKPV)<sub>2</sub> on macrophages were almost reversed by MC1R siRNA knockdown. Our evidence suggest that the synthetic melanocortin (CKPV)<sub>2</sub> exerts both anti-fungal and anti-inflammatory activities against *Candida albicans* vaginitis, probably through regulating macrophages M1 to M2 polarization.

Local immunity plays a decisive role in the vaginal mucous *Candida* infections. Studies confirmed that the mice vaginal mucosa contained a large number of epithelial cells, dendritic cells, langerhans cells, neutrophils, macrophages and T cells [41]. Neutrophils are recognized as the dominant ones in innate immune cells of vagina. However, studies have indicated that neutrophils were not main ones to clear the yeast burden during the infection, although they have shown abilities of yeast phagocytosis [42]. Other innate immune cells such as monocytes and NK cells were also found in infected vaginal cavity [42]. Mononuclear cells can further differentiate into macrophages which play an important role in innate and adaptive immunity against microbial of host defense [40]. Monocytes/macrophages are able to “eat” extraneous pathogen, eliminate the aging and injured cells, destroy tumor cells and participate in immune responses [40]. Macrophages have the enormous phagocytic capacities, and can be divided into two subtypes namely M1 and M2 [43]. M1-polarized macrophages could activate an inflammatory response via secreting granzyme, perforin and pro-inflammatory cytokines including IL-1 $\beta$ , IL-6 and TNF- $\alpha$  [44]. Therefore, they are beneficial during the early stage of infection

### References

- Singh V, Sinha I, Sadhale PP (2005) Global analysis of altered gene expression during morphogenesis of *Candida albicans* in vitro. *Biochem Biophys Res Commun* 334: 1149–1158.
- Fidel PL (2002) The protective immune response against vaginal candidiasis: lessons learned from clinical studies and animal models. *Int Rev Immunol* 21: 515–548.
- Kim J, Sudbery P (2011) *Candida albicans*, a major human fungal pathogen. *J Microbiol* 49: 171–177.

by eliminating pathogens, but may cause adverse effects through activating sustained inflammation response latter. M2-polarized macrophages secrete IL-10 and have high arginase activity to promote tissue restoration and reconstruction [40,45]. As such, polarization of macrophages is critical in the inflammatory reactivation outcomes [40,45]. Our immunohistochemistry results showed that the infiltrated inflammatory cells of *Candida albicans* vaginitis model rats were mainly M1 subtype macrophages (CD68 positive), after (CKPV)<sub>2</sub> administration, these macrophages were mainly M2 positive (CD163 positive). Our results also showed that (CKPV)<sub>2</sub> significantly inhibited macrophage phagocytosis and the production of pro-inflammatory cytokines (IL-1 $\beta$ , IL-6 and TNF- $\alpha$ ). Meanwhile, (CKPV)<sub>2</sub> enhanced IL-10 secretion and arginase activity in primary cultured macrophages, indicating a typical macrophage M1-to-M2 polarization.

Melanocortin receptor 1 (MC1R), a G protein coupled receptor, can be activated by melanocortin peptides [46]. It widely participates in inflammatory and immune responses through activating downstream signals including adenylate cyclase (AC) [32,47,48]. Previous studies have confirmed that anti-inflammatory effects of  $\alpha$ -MSH were mainly depend on the MC1R [49,50]. Our results here suggested that (CKPV)<sub>2</sub>-induced cAMP production and anti-inflammatory and anti-fungal abilities were also dependent on MC1R, as MC1R RNAi knockdown almost blocked those effects.

### Conclusions

(CKPV)<sub>2</sub> showed an excellent anti-fungal and anti-inflammatory effect against *Candida albicans* vaginitis both in vivo and in vitro. (CKPV)<sub>2</sub> inhibits macrophage infiltration in vaginal mucosa tissues and induces the macrophages M1 to M2 polarization.

### Supporting Information

**Figure S1 Anti-acute inflammatory effects of (CKPV)<sub>2</sub>.** (A) (CKPV)<sub>2</sub> inhibits mouse ear edema induced by xylene. The inhibitory rate was determined from the discrimination between the two ears of each mouse. (B) (CKPV)<sub>2</sub> inhibits rat paw edema induced by albumen. Volumes of paws were measured at 0.5, 1, 2, 4 and 6 h after 0.05 ml albumen (10%) treatment. (C) (CKPV)<sub>2</sub> inhibits rat foot itching induced by phosphate. The total amount of given histamine phosphate was the itching limens. Experiments in this figure were repeated three times and similar results were obtained. There was a significant difference between model and drug treatment groups. \* $p < 0.01$  (ANOVA). (EPS)

**Text S1 Protocol of acute inflammation models used in this study.** (DOC)

### Author Contributions

Conceived and designed the experiments: YY ZL CC. Performed the experiments: HJ YZ GL MT ZJ Xian-jing Li JD. Analyzed the data: YY MT GZ XD ZW LL YL Xian-jing Li LH. Contributed reagents/materials/analysis tools: YY Xiao-yi Li CC. Wrote the paper: HJ YZ CC.

4. Sobel JD (1985) Epidemiology and pathogenesis of recurrent vulvovaginal candidiasis. *Am J Obstet Gynecol* 152: 924–935.
5. Chen JY, Tian H, Beigi RH (2009) Treatment considerations for bacterial vaginosis and the risk of recurrence. *J Womens Health (Larchmt)* 18: 1997–2004.
6. Sobel JD, Faro S, Force RW, Foxman B, Ledger WJ, et al. (1998) Vulvovaginal candidiasis: epidemiologic, diagnostic, and therapeutic considerations. *Am J Obstet Gynecol* 178: 203–211.
7. Fong IW (1996) Clinical and cost considerations in the pharmacotherapy of vulvovaginal candidiasis. *Pharmacoeconomics* 9: 497–505.
8. Cutuli M, Cristiani S, Lipton JM, Catania A (2000) Antimicrobial effects of alpha-MSH peptides. *J Leukoc Biol* 67: 233–239.
9. Madhuri, Shireen T, Venugopal SK, Ghosh D, Gadepalli R, et al. (2009) In vitro antimicrobial activity of alpha-melanocyte stimulating hormone against major human pathogen *Staphylococcus aureus*. *Peptides* 30: 1627–1635.
10. Catania A, Colombo G, Rossi C, Carlin A, Sordi A, et al. (2006) Antimicrobial properties of alpha-MSH and related synthetic melanocortins. *ScientificWorld-Journal* 6: 1241–1246.
11. Cragnolini AB, Caruso C, Lasaga M, Scimonelli TN (2006) Alpha-MSH and gamma-MSH modulate early release of hypothalamic PGE2 and NO induced by IL-1beta differently. *Neurosci Lett* 409: 168–172.
12. Hill RP, MacNeil S, Haycock JW (2006) Melanocyte stimulating hormone peptides inhibit TNF-alpha signaling in human dermal fibroblast cells. *Peptides* 27: 421–430.
13. Raap U, Brzoska T, Sohl S, Path G, Emmel J, et al. (2003) Alpha-melanocyte-stimulating hormone inhibits allergic airway inflammation. *J Immunol* 171: 353–359.
14. Getting SJ (2002) Melanocortin peptides and their receptors: new targets for anti-inflammatory therapy. *Trends Pharmacol Sci* 23: 447–449.
15. Li D, Taylor AW (2008) Diminishment of alpha-MSH anti-inflammatory activity in MC1r siRNA-transfected RAW264.7 macrophages. *J Leukoc Biol* 84: 191–198.
16. Getting SJ, Schioth HB, Perretti M (2003) Dissection of the anti-inflammatory effect of the core and C-terminal (KPV) alpha-melanocyte-stimulating hormone peptides. *J Pharmacol Exp Ther* 306: 631–637.
17. Prabhu NV, Perkyns JS, Pettitt BM (1999) Modeling of alpha-MSH conformations with implicit solvent. *J Pept Res* 54: 394–407.
18. Catania A, Grieco P, Randazzo A, Novellino E, Gatti S, et al. (2005) Three-dimensional structure of the alpha-MSH-derived candidacidal peptide [Ac-CKPV]<sub>2</sub>. *J Pept Res* 66: 19–26.
19. Gatti S, Carlin A, Sordi A, Leonardi P, Colombo G, et al. (2006) Inhibitory effects of the peptide (CKPV)<sub>2</sub> on endotoxin-induced host reactions. *J Surg Res* 131: 209–214.
20. Capsoni F, Ongari A, Colombo G, Turcatti F, Catania A (2007) The synthetic melanocortin (CKPV)<sub>2</sub> exerts broad anti-inflammatory effects in human neutrophils. *Peptides* 28: 2016–2022.
21. Capsoni F, Ongari AM, Reali E, Catania A (2009) Melanocortin peptides inhibit urate crystal-induced activation of phagocytic cells. *Arthritis Res Ther* 11: R151.
22. Mosser DM, Edwards JP (2008) Exploring the full spectrum of macrophage activation. *Nat Rev Immunol* 8: 958–969.
23. Schleicher U, Bogdan C (2009) Generation, culture and flow-cytometric characterization of primary mouse macrophages. *Methods Mol Biol* 531: 203–224.
24. Stringaro A, Crateri P, Adriani D, Arancia G, Cassone A, et al. (1998) Expression of the complement-binding protein (MP60) of *Candida albicans* in experimental vaginitis. *Mycopathologia* 144: 147–152.
25. Carrara MA, Donatti L, Damke E, Svidizinski TI, Consolaro ME, et al. (2010) A new model of vaginal infection by *Candida albicans* in rats. *Mycopathologia* 170: 331–338.
26. Fidel PL, Jr., Lynch ME, Sobel JD (1993) *Candida*-specific cell-mediated immunity is demonstrable in mice with experimental vaginal candidiasis. *Infect Immun* 61: 1990–1995.
27. Pander J, Heusinkveld M, van der Straaten T, Jordanova ES, Baak-Pablo R, et al. (2011) Activation of tumor-promoting type 2 macrophages by EGFR-targeting antibody cetuximab. *Clin Cancer Res* 17: 5668–5673.
28. Liu X, Yu H, Yang L, Li C, Li L (2012) 15-Deoxy-Delta(12,14)-prostaglandin J(2) attenuates the biological activities of monocyte/macrophage cell lines. *Eur J Cell Biol*.
29. McGillis JP, Sudduth-Klinger J, Harrowe G, Mitsuhashi M, Payan DG (1989) Transient expression of the angiotensin II receptor: a rapid and functional analysis of a calcium-mobilizing seven-transmembrane domain receptor in COS-7 cells. *Biochem Biophys Res Commun* 165: 935–941.
30. Bonetto S, Carlvani I, Baty D (2005) Isolation and characterization of antagonist and agonist peptides to the human melanocortin 1 receptor. *Peptides* 26: 2302–2313.
31. Seong I, Min HJ, Lee JH, Yeo CY, Kang DM, et al. (2012) Sox10 controls migration of B16F10 melanoma cells through multiple regulatory target genes. *PLoS One* 7: e31477.
32. Newton RA, Smit SE, Barnes CC, Pedley J, Parsons PG, et al. (2005) Activation of the cAMP pathway by variant human MC1R alleles expressed in HEK and in melanoma cells. *Peptides* 26: 1818–1824.
33. Lam CW, Perretti M, Getting SJ (2006) Melanocortin receptor signaling in RAW264.7 macrophage cell line. *Peptides* 27: 404–412.
34. Shiao MY, Chiou HL, Lee YL, Kuo TM, Chang YH (2001) Establishment of a consistent L929 bioassay system for TNF-alpha quantitation to evaluate the effect of lipopolysaccharide, phytohemagglutinin and cytodifferentiation agents on cytotoxicity of TNF-alpha secreted by adherent human mononuclear cells. *Mediators Inflamm* 10: 199–208.
35. Humphreys DT, Wilson MR (1999) Modes of L929 cell death induced by TNF-alpha and other cytotoxic agents. *Cytokine* 11: 773–782.
36. Motran CC, Diaz FL, Gruppi A, Slavin D, Chatton B, et al. (2002) Human pregnancy-specific glycoprotein 1a (PSG1a) induces alternative activation in human and mouse monocytes and suppresses the accessory cell-dependent T cell proliferation. *J Leukoc Biol* 72: 512–521.
37. Tansini A, de Medeiros BM (2009) Susceptibility to *Yersinia pseudotuberculosis* infection is linked to the pattern of macrophage activation. *Scand J Immunol* 69: 310–318.
38. Medrek C, Ponten F, Jirstrom K, Leandersson K (2012) The presence of tumor associated macrophages in tumor stroma as a prognostic marker for breast cancer patients. *BMC Cancer* 12: 306.
39. Ydens E, Cauwels A, Asselbergh B, Goethals S, Peeraer L, et al. (2012) Acute injury in the peripheral nervous system triggers an alternative macrophage response. *J Neuroinflammation* 9: 176.
40. Martinez FO, Sica A, Mantovani A, Locati M (2008) Macrophage activation and polarization. *Front Biosci* 13: 453–461.
41. Fidel PL, Jr., Sobel JD (1996) Immunopathogenesis of recurrent vulvovaginal candidiasis. *Clin Microbiol Rev* 9: 335–348.
42. Quayle AJ (2002) The innate and early immune response to pathogen challenge in the female genital tract and the pivotal role of epithelial cells. *J Reprod Immunol* 57: 61–79.
43. Badylak SF, Valentin JE, Ravindra AK, McCabe GP, Stewart-Akers AM (2008) Macrophage phenotype as a determinant of biologic scaffold remodeling. *Tissue Eng Part A* 14: 1835–1842.
44. Schenk M, Mueller C (2007) Adaptations of intestinal macrophages to an antigen-rich environment. *Semin Immunol* 19: 84–93.
45. Mantovani A, Sica A, Sozzani S, Allavena P, Vecchi A, et al. (2004) The chemokine system in diverse forms of macrophage activation and polarization. *Trends Immunol* 25: 677–686.
46. Szardenings M, Muceniece R, Mutule I, Mutulis F, Wikberg JE (2000) New highly specific agonistic peptides for human melanocortin MC(1) receptor. *Peptides* 21: 239–243.
47. Moon EY, Pyo S (2007) Lipopolysaccharide stimulates Epac1-mediated Rap1/NF-kappaB pathway in Raw 264.7 murine macrophages. *Immunol Lett* 110: 121–125.
48. Ballinger MN, Welliver T, Straight S, Peters-Golden M, Swanson JA (2010) Transient increase in cyclic AMP localized to macrophage phagosomes. *PLoS One* 5: e13962.
49. Yoon SW, Goh SH, Chun JS, Cho EW, Lee MK, et al. (2003) alpha-Melanocyte-stimulating hormone inhibits lipopolysaccharide-induced tumor necrosis factor-alpha production in leukocytes by modulating protein kinase A, p38 kinase, and nuclear factor kappa B signaling pathways. *J Biol Chem* 278: 32914–32920.
50. Maaser C, Kannengiesser K, Specht C, Luger A, Brzoska T, et al. (2006) Crucial role of the melanocortin receptor MC1R in experimental colitis. *Gut* 55: 1415–1422.