

RESEARCH ARTICLE

EGCG Enhances Cisplatin Sensitivity by Regulating Expression of the Copper and Cisplatin Influx Transporter CTR1 in Ovary Cancer

Xuemin Wang^{1,4}, Pan Jiang¹, Pengqi Wang¹, Chung S. Yang², Xuerong Wang³, Qing Feng^{1*}

1 Department of Nutrition and Food Hygiene, Key Laboratory of Toxicology, School of Public Health, Nanjing Medical University, Nanjing, Jiangsu, China, **2** Department of Chemical Biology, Center for Cancer Prevention Research, Ernest Mario School of Pharmacy, Rutgers, the State University of New Jersey, Piscataway, New Jersey, United States of America, **3** Department of Pharmacology, School of Basic Medical Science, Nanjing Medical University, Nanjing, Jiangsu, China, **4** Beijing Research Institute for Nutritional Resources, Beijing, China

* qingfeng@njmu.edu.cn



OPEN ACCESS

Citation: Wang X, Jiang P, Wang P, Yang CS, Wang X, Feng Q (2015) EGCG Enhances Cisplatin Sensitivity by Regulating Expression of the Copper and Cisplatin Influx Transporter CTR1 in Ovary Cancer. *PLoS ONE* 10(4): e0125402. doi:10.1371/journal.pone.0125402

Academic Editor: Goli Samimi, Garvan Institute of Medical Research, AUSTRALIA

Received: January 15, 2015

Accepted: March 23, 2015

Published: April 30, 2015

Copyright: © 2015 Wang et al. This is an open access article distributed under the terms of the [Creative Commons Attribution License](https://creativecommons.org/licenses/by/4.0/), which permits unrestricted use, distribution, and reproduction in any medium, provided the original author and source are credited.

Data Availability Statement: All relevant data are within the paper.

Funding: This work was supported by National Natural Science Foundation of China (81472977), Scientific Research Foundation for the Returned Overseas Chinese Scholars, State Education Ministry (HG11-4302), Foundation from Priority Academic Program Development of Jiangsu Higher Education Institutions, and Foundation from Six Big Talent Peak of Jiangsu Province.

Abstract

Cisplatin is one of the first-line platinum-based chemotherapeutic agents for treatment of many types of cancer, including ovary cancer. CTR1 (copper transporter 1), a transmembrane solute carrier transporter, has previously been shown to increase the cellular uptake and sensitivity of cisplatin. It is hypothesized that increased CTR1 expression would enhance the sensitivity of cancer cells to cisplatin (cDDP). The present study demonstrates for the first time that (-)-epigallocatechin-3-gallate (EGCG), a major polyphenol from green tea, can enhance CTR1 mRNA and protein expression in ovarian cancer cells and xenograft mice. EGCG inhibits the rapid degradation of CTR1 induced by cDDP. The combination of EGCG and cDDP increases the accumulation of cDDP and DNA-Pt adducts, and subsequently enhances the sensitivity of ovarian cancer SKOV3 and OVCAR3 cells to the chemotherapeutic agent. In the OVCAR3 ovarian cancer xenograft nude mice model, the combination of the lower concentration of cDDP and EGCG strongly repressed the tumor growth and exhibited protective effect on the nephrotoxicity induced by cisplatin. Overall, these findings uncover a novel chemotherapy mechanism of EGCG as an adjuvant for the treatment of ovarian cancer.

Introduction

Ovarian cancer is the seventh most common cancer (estimated age-standardized incidence and mortality) in women worldwide and is one of the leading causes of mortality among gynecological malignancies [1]. In recent decades, even though new therapeutic strategies have been

Competing Interests: The authors have declared that no competing interests exist.

developed, surgery and platinum-based chemotherapy are still the standard treatments for ovarian cancer [2].

Cisplatin (cis-diamminedichloroplatinum, cDDP) is one of the first-line chemotherapeutic agents in the treatment of ovarian cancer. cDDP exerts its cytotoxic effect predominantly by formatting an intra-strand cross-linking on DNA that blocks transcription and DNA replication, resulting in cell apoptosis [3]. However, drug resistance is an important limitation in the clinical application of cDDP. Mechanisms of cDDP resistance are complicated, including decreased drug uptake, increased drug efflux, increased DNA damage repair and alterations in apoptotic signaling pathways [4]. Recent studies suggested that copper transporters not only are involved in copper homeostasis but also regulate the cellular pharmacology and sensitivity to platinum-based agents [5, 6].

The family of copper transporters consists of copper transporters and copper transporting phosphorylated ATPase (ATP7A and ATP7B). The former includes transmembrane solute carrier transporter CTR1 (encoded by *SLC31A1*) and CTR2 which regulate the influx of platinum-containing agents. CTR1 contains 190 amino acids and has three transmembrane domains. The N-terminal extracellular domain is rich in methionine and histidine, and is essential for transporting copper [7, 8]. Several studies indicated that CTR1 is a major regulator of the efficacy of platinum drugs *in vitro* and *in vivo* [9, 10]. Over-expression of CTR1 was found to sensitize cells to platinum drugs by increasing drug uptake [11, 12]; whereas knock-down of CTR1 rendered cells resistant to these agents in yeast and several mammalian cells [13–15]. CTR1 could be rapidly degraded by cDDP, even at a low concentration (2 μ M) [15]. This process involves ubiquitination and proteasomal degradation and requires the copper chaperone antioxidant protein 1 (ATOX1) [16]. Unlike CTR1, CTR2 decreases cellular cDDP accumulation and sensitivity to cDDP of several types of tumors [17, 18]. Knock-down of CTR2 leads to increased concentration of cDDP and this effect is opposite to knock-down of CTR1 [19]. ATP7A and ATP7B facilitate the sequestration and export of platinum-containing agents and are two promising chemoresistance markers for cDDP in various solid tumors [20, 21].

(-)-Epigallocatechin-3-gallate (EGCG) is the most abundant and active polyphenol found in green tea and has been extensively studied in cancer prevention and therapy [22,23]. It has been found that EGCG has anti-cancer effect in several cancer types including ovarian cancer. The anti-cancer effect of EGCG may involve its inhibition of cancer process during the initiation, progression and metastasis [24].

There is a large body of evidence suggests that EGCG enhances the effect of conventional cancer therapies in multiple cell models [25]. In the case of the combination of EGCG and cDDP, EGCG can enhance the sensitivity of cDDP via multiple mechanisms, including up-regulating caspase-9a [26], potentiating G2/M arrest and up-regulating p21 [27], as well as inducing of apoptosis through enhanced intracellular H₂O₂ generation [28]. EGCG treatment also inhibits telomerase expression and makes cells more sensitive to cDDP [29]. A more recent study found that EGCG suppressed ABCC2 and ABCG2 transporter genes, then augmented the efficacy of cDDP [30]. As a chemosensitizer, EGCG regulates microvasculature and micro-environment and improved cDDP sensitivity by rebalancing Ang-1 and Ang-2 [31]. In lung cancer cells, EGCG could enhance the efficacy of cDDP by down-regulating hsa-miR-98-5p [32].

Although the mechanisms of action of EGCG in combination with cDDP have been intensively studied, there is no research focused on the uptake of cDDP. Here, we investigated whether EGCG could modulate the copper transporters involved in the uptake and efflux of cDDP *in vitro* and *in vivo*. We analyzed the effect of EGCG in combination with cDDP on cells sensitivity to cDDP, the accumulation of cDDP and DNA-cDDP adducts, and the expression

of copper transporters in ovarian cancer cells. Interestingly, we made a novel observation that EGCG induced the expression of CTR1 *in vivo and in vitro*. The findings provides experimental evidence for considering the application of EGCG as an adjuvant in ovarian cancer therapy.

Materials and Methods

Cell culture and reagents

Human ovarian cancer OVCAR3, SKOV3 cells and human embryonic kidney HEK-293T cells were obtained from Chinese Academy of Sciences Committee on Type Culture Collection Cell Bank (Shanghai, China). All these cells were cultured in Dulbecco's Modified Eagle Medium (DMEM, GIBCO, Carlsbad, CA, USA) supplemented with 10% heat-inactivated fetal bovine serum (GIBCO, Carlsbad, CA, USA), and 100U/ml penicillin and 100mg/ml streptomycin. Cells were incubated at 37°C in a humidified atmosphere of 5% CO₂. EGCG and cDDP were purchased from Sigma-Aldrich (St. Louis, MO, USA).

MTT assay

MTT assay was used to evaluate cell viability. Cells were seeded in a 96-well plate at a density of 2×10^3 per well and allowed to attach overnight. Then EGCG alone or in combination with cDDP was administrated in a final volume of 200 μ l of medium. After treatment for 24 h or 48 h, the cells were incubated at 37°C with 20 μ l of MTT solution (5 mg/ml, Amresco, OH, USA) for 4 h. The MTT formazan crystal was then dissolved in 150 μ l DMSO (Lingfeng, Shanghai, China), and a microplate reader (Tecan, Mannedorf, Switzerland) was used to measure the absorbance at 490 nm.

Colony formation assay

After indicated treatment, the cells (2×10^2) were seeded in a 6-well plate and changed to a fresh medium every 3 days. After three weeks, visible colonies were fixed and stained with crystal violet staining solution (Beyotime, Shanghai, China).

Hoechst 33258 staining

The cells were seeded in a 6-well plate. After incubation for 24 h, EGCG or cDDP was added alone or in combination for 48 h. Then the cells were fixed in 4% paraformaldehyde for 10 min, and washed twice with PBS. After being stained with 0.5 ml of Hoechst 33258 (Beyotime, Shanghai, China) for 5 min, the cells were again washed twice with PBS. The stained nuclei were observed under an inverted fluorescence microscopy (Olympus, Japan).

Measurement of platinum (Pt) accumulation in cells

Whole-cell Pt content was measured by a Perkin-Elmer Element 2 inductively coupled plasma mass spectrometry (ICP-MS) according to previously reported methods [17]. For measurement of Pt in DNA, the DNA was extracted using DNAzol (Invitrogen, Carlsbad, CA, USA) according to the manufacturer's protocol. For normalization, the concentration of DNA was measured using a Nanodrop 2000 spectrophotometer (Thermo Scientific, Wilmington, DE, USA). The DNA samples were then digested in 5% nitric acid and measured by ICP-MS.

siRNA transfection

Human CTR1 siRNA or siRNA control (RiboBio, Guangzhou, China) were transfected into OVCAR3 and HEK-293T cells in a 96-well plate using Lipofectamine 2000 reagent (Invitrogen,

Carlsbad, CA, USA), following the manufacturer's instructions. Si-h-CTR1 sequences are listed below:

si-h-CTR1 001: 5' GAUCAAUACAGCUGGAGAA dTdT 3' (forward)
3' dTdT CUAGUUAUGUCGACCUCUU 5' (reverse);
si-h-CTR1 002: 5' GGAAGAAGGCAGUGGUAGU dTdT 3' (forward)
3' dTdT CCUUCUCCGUCACCAUCA 5' (reverse);
si-h-CTR1 003: 5' CUACUUUGGCUUUAAGAAU dTdT 3' (forward)
3' dTdT GAUGAAACCGAAAUUCUUA 5' (reverse).

Reverse Transcription Polymerase Chain Reaction (RT-PCR)

Total RNA was isolated from cells using the RNAiso Plus (TaKaRaBioTechnology, Dalian, China) following the manufacturer's protocol. The concentration of total RNA was measured using a Nanodrop 2000 spectrophotometer (Thermo Scientific, Wilmington, DE). Total RNA was reverse transcribed using the PrimeScriptRT Master Mix (TaKaRaBioTechnology), and PCR was performed using Premix Taq (TaKaRaTaq Version 2.0 plus dye, TaKaRaBioTechnology). The mRNA specific primers of CTR1, CTR2, ATP7A and ATP7B were purchased from Genscript Corp. (Nanjing, China). The PCR products were separated by electrophoresis in 2% agarose gels and were detected using the AlphaImager HP system (Alpha Innotech, San Leandro, CA, USA).

Quantitative reverse transcription-PCR (qRT-PCR)

Total RNA was extracted by the RNAiso Plus (TaKaRaBio Technology, Dalian, China) following the manufacturer's protocol. For mRNA quantitative analysis, total RNA was reverse transcribed using the PrimeScriptTM RT MasterMix (TaKaRaBio Technology, Dalian, China), and qPCR was performed using SYBRPremix Ex Taq II (TaKaRaBio Technology, Dalian, China). The mRNA specific primers of CTR1, CTR2, ATP7A and ATP7B were purchased from Genscript Corp (Nanjing, China). All qPCR was performed with the Applied Biosystems 7300 Real Time PCR System (Applied Biosystems, Foster City, CA, USA) according to manufacturer's instructions. Expression of mRNA was defined from the threshold cycle, and relative expression levels were calculated using the $2^{-\Delta\Delta C_t}$ method after normalization with reference to the expression of GAPDH. Primer sequences are listed below:

GAPDH; 5'-CAAGGTCATCCATGACAACCTTTG-3' (forward)
5'-GTCCACCACCCTGTTGCTGTAG-3' (reverse)
CTR1: 5'-GGGGATGAGCTATATGGACTCC-3' (forward) 5'-TCACCAAACCGGAAAA
CAGTAG-3' (reverse);
CTR2; 5'-ATACAGCGGTGCTTCTGTTTG-3' (forward) and 5'-GGTTGGCAGGTTC
ACCAGTA-3' (reverse); 5'-TGACCCTAAACTACAGACTCCAA-3' (forward) and 5'-C
GCCGTAACAGTCAGAAACAA-3' (reverse) for ATP7A; 5'-GCCAGCATTGCAGAAGG
AAAG-3' (forward) and 5'-TGATAAGTGATGACGGCCTCT-3' (reverse) for ATP7B.

Western blotting

After the indicated treatment, the cells were harvested and lysed by RIPA buffer (KeyGENBioTECH, Nanjing, China). The protein was extracted and its concentration was measured by BCA Protein Assay Kit (Beyotime, Shanghai, China). SDS-PAGE was used to separate 60 μ g of protein. Then followed by transfer onto a PVDF membrane (Millipore Corporation, MA, USA). Membranes were blocked for 1 h at room temperature with 5% non-fat dry milk in Tris-Buffered-Saline with Tween (TBST), followed by incubation overnight at 4°C with specific antibodies. After being washed 3 times for 5 min with TBST, the membrane was then incubated

with appropriate secondary antibodies for 1 h at room temperature. After extensive washing with TBST, proteins were visualized by the SuperSignal West Pico (Thermo Scientific, Wilmington, DE, USA). Antibodies used include: anti-CTR1 (1:1000, Santa Cruz Biotechnology, CA, USA), anti- β -actin (1:1000, BOSTER, Wuhan, China), HRP-Conjugated AffiniPure Goat Anti-Rabbit IgG (1:2000, ZSGB-BIO, Beijing, China), HRP-Conjugated AffiniPure Goat Anti-Mouse IgG (1:2000, ZSGB-BIO, Beijing, China).

Ethics statement

This study was carried out strictly with the recommendations in the Guide for the Care and Use of Laboratory Animals of the National Institutes of Health. The protocol was approved by the Committee on the Ethics of Animal Experiments of Nanjing medical university (Permit Number: 2120474).

Xenograft mouse model

Female BALB/c nude mice, 3–5 weeks of age, were purchased from Shanghai Animal Laboratory Center (Shanghai, China) and maintained in appropriate sterile filter-capped cages with lights turned on at 8:30 am in the Experimental Animal Center at Nanjing Medical University. The temperature and humidity was $22 \pm 1^\circ\text{C}$ and $55 \pm 5\%$. We put wood shavings, bedding and a cardboard tube in all cages for environmental enrichment. All mice were observed every day to monitor abnormal behavior, such as inability to eat or drink, no response when stimulated, or unable to run away when touched. Exponentially growing OVCAR3 cells (5×10^6) were injected subcutaneously into the dorsum of the mice. After tumor transplantation for 1 week, the body weight and the tumor size were recorded twice a week. The length and width of tumor were measured using a caliper, and the volumes were calculated by the following formula: $\text{volume (mm}^3\text{)} = \text{length} \times \text{width} \times \text{width}/2$. At the 18th day after transplantation, 32 mice were randomized into 4 groups (6 mice of control group and 8 mice of the other group) and treated as follows: control (normal saline, 0.1ml/10g), EGCG (20 mg/kg), cDDP (5 mg/kg), EGCG (20 mg/kg) and cDDP (5 mg/kg). EGCG was administered twice a week and cDDP was given once a week by intraperitoneal injection. After treatment for 4 weeks, xenograft tumors and kidney tissue were isolated from mice. A portion of the tumors and kidney tissue were fixed in 4% paraformaldehyde for histological study, and the rest were prepared for further experiments. We tried our best to minimize suffering of the Female BALB/c nude mice. No mice were sacrificed before the end of the experiment and the mice were euthanized by cervical dislocation.

Renal damage indicators

Renal damage was measured with blood urea nitrogen (BUN) and plasma creatinine. BUN was measured by diagnostic kits (Jiancheng Bioengineering Institute, Nanjing, China) according to the assay kit protocols. We used urease methods to measure the BUN and picric acid methods to test the serum creatinine.

Statistical methods

All data were presented as the mean \pm standard deviation (SD) of at least three independent experiments. Western blotting was quantified using Image J software. Statistical analysis was performed using the student's *t* test and One-Way ANOVA. The data were considered statistically significant when the *P* value was less than 0.05. (* $P < 0.05$, ** $P < 0.01$)

Results

EGCG enhances the sensitivity of the ovarian cancer cells to cDDP

To determine the suitable concentration of EGCG on cells survival, ovary cancer OVCAR3 and SKOV3 cells were treated with indicated doses of EGCG. As [Fig 1A](#) showed, from 10 μM , EGCG caused significantly inhibition of the cells growth. Therefore, 10 μM EGCG was chosen for combination with cDDP. To determine the effect of EGCG on cDDP sensitivity, OVCAR3 and SKOV3 cells were treated with 10 μM EGCG and various concentration of cDDP, either alone or in combination. As shown in [Fig 1B](#), cDDP alone inhibited the growth of the ovary cancer cells in a dose-dependent manner, while the combination of EGCG and cDDP exhibited a greater inhibition. In OVCAR3 cells, the IC_{50} (mean \pm SEM) was $9.49 \pm 0.13 \mu\text{M}$ for cDDP alone and $3.48 \pm 0.24 \mu\text{M}$ cDDP for the combination. The combination decreased IC_{50} for 2.7-fold in SKOV3 cells. The IC_{50} had a 1.6-fold decrease in the combination of EGCG and cDDP ($6.14 \pm 0.38 \mu\text{M}$), compared with cDDP ($9.65 \pm 0.56 \mu\text{M}$) only treatment.

To further confirm the effect of EGCG and cDDP on cell growth, a colony formation assay was conducted. EGCG or cDDP inhibited colony growth, while the combination of the two conferred a more pronounced repression ([Fig 1C](#)). The possible induction of apoptosis in OVCAR3 cells by EGCG and cDDP was investigated by Hoechst 33258 staining. The combination of the two agents showed significant apoptosis in OVCAR3 cells ([Fig 1D](#)).

EGCG increases cDDP and DNA-Pt adducts accumulation in cells

To investigate whether changes in sensitivity to cDDP were resulted from changes in cellular cDDP and DNA-Pt accumulation, the whole-cell content of Pt was measured by ICP-MS. [Fig 2A](#) showed that the OVCAR3 cells exposed to 30 μM of cDDP for 4 h accumulated 29.57 ± 2.52 ng of Pt per 1 μg protein; whereas the cells treated with combined EGCG and cDDP accumulated 40.04 ± 2.78 ng of Pt per 1 μg protein, representing a 35% elevation as compared with the cDDP group ($P < 0.01$).

The primary mechanism of action of Pt-containing drugs is thought to form DNA-Pt adducts and cause cytotoxicity. Thus, the DNA-Pt adduct concentration was measured in DNA extracted from cells with 30 μM of cDDP or cDDP combined with 10 μM of EGCG. The combination of the two agents caused a 42% increase in the DNA-Pt accumulation (7.66 ± 0.70 versus $5.41 \pm 0.46 \mu\text{g Pt}/\mu\text{g DNA}$; $P < 0.01$) ([Fig 2B](#)). Therefore, the observation of EGCG enhancing cDDP sensitivity might be partly explained by a proportional increase in the amount of the cDDP and DNA-Pt accumulation in the cells.

EGCG promotes the expression of CTR1 but not the other copper transporters

Given the fact that the copper transporters can partly influence the sensitivity of ovarian cancer cells to cDDP, the relative expression of copper transporters was quantified by RT-PCR and qPCR. As shown in [Fig 3A](#), CTR1 mRNA was elevated after EGCG treatment in OVCAR3 cells. However, there were no significant changes in mRNA expression of CTR2, ATP7A and ATP7B upon EGCG treatment. Next, we focused on whether EGCG could affect CTR1 protein expression. As shown in [Fig 3B](#), EGCG was able to induce CTR1 protein expression in a dose-dependent manner either in OVCAR3 and SKOV3 cells ([Fig 3C](#)). Taken together, EGCG can induce CTR1 expression in ovary cancer cells.

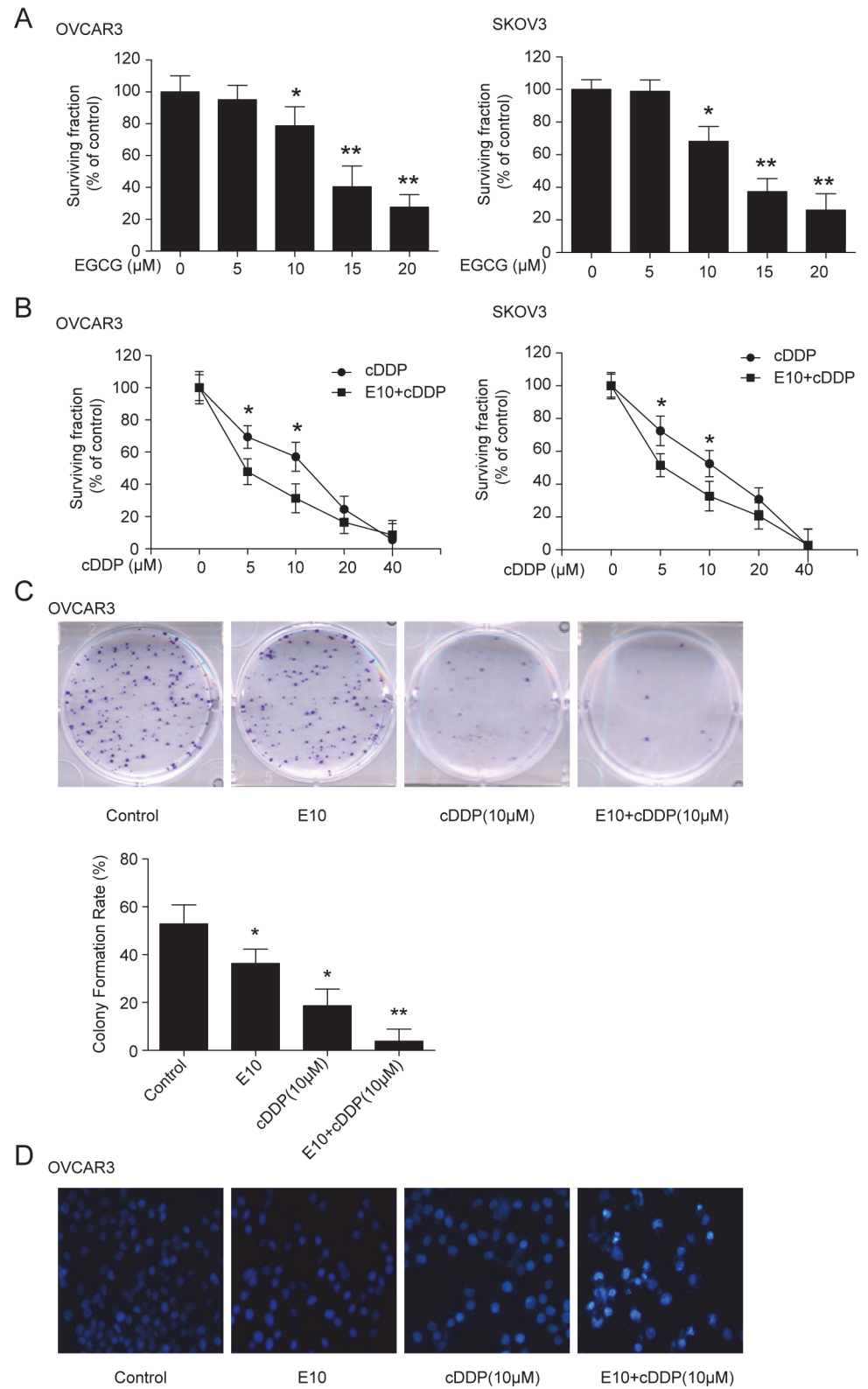


Fig 1. Effect of EGCG on the sensitivity of the ovarian cancer to cDDP. (A) Effect of EGCG on ovary cancer cells survival fraction. OVCAR3 and SKOV3 cells were treated with the indicated concentrations of EGCG for 24 h, then followed by MTT assay to detect cell the survival fraction. (B) Effect of the combination of EGCG and cDDP on cell survival fraction. The cells were treated with indicated concentration of cDDP alone,

or in combination with the EGCG (10 μ M, shown as E10), and followed by MTT assay. (C) EGCG in combination with cDDP repressed colony formation. OVCAR3 cells were treated with 10 μ M of EGCG alone or in combination of 10 μ M of cDDP for 48 h. When the colonies formed two weeks later, colony formation assay was carried out. (D) The combination of EGCG and cDDP on cells apoptosis, Hoechst 33258 staining was used to detect apoptosis caused by the indicated treatments. (* P <0.05, ** P <0.01)

doi:10.1371/journal.pone.0125402.g001

Knock-down of CTR1 changes the sensitivity of cells to cDDP

To further confirm the relationship between CTR1 and cDDP sensitivity, OVCAR3 cells were transfected with CTR1 siRNAs. The si-RNA3 shows the best knockdown effect. The expression of CTR1 (Fig 4A and 4B) and the survival fraction of cells responding to cDDP were measured. As shown in Fig 4A and 4B, knockdown of CTR1 decreased the expression of CTR1 and lowered the sensitivity of ovarian cancer OVCAR3 and SKOV3 cells to cDDP. Interestingly, knockdown of CTR1 had no statistically significant effect in human embryonic kidney HEK-293T cells, though the expression of CTR1 was almost completely inhibited. These results indicated that the influence of CTR1 to cDDP might be different between cell types.

EGCG inhibits the degradation of CTR1 induced by cDDP

Previous studies have shown that, even at lower concentrations, cDDP can induce rapid degradation of CTR1 [15]. As shown in Fig 5A and 5B, 10 μ M of cDDP decreased the expression of CTR1 in a time-dependent manner in OVCAR3 and SKOV3 cells. To determine the contribution of proteasomal degradation to the down-regulation of CTR1 induced by cDDP, OVCAR3 cells were incubated with cDDP alone or in combination with MG132 (a proteasome inhibitor), western blot analysis indicated that MG132 blocked the degradation of CTR1 (Fig 5C). Since EGCG could induce the expression of CTR1, we next determined whether EGCG could prevent the degradation of CTR1 induced by cDDP. Fig 5D and 5E showed that EGCG inhibited the rapid degradation of CTR1 caused by cDDP treatment in ovarian cancer OVCAR3 and SKOV3 cells.

EGCG enhances the efficacy of cDDP in inhibiting xenograft tumor growth and attenuates the nephrotoxicity of cDDP in vivo

To further investigate whether the enhanced efficacy of cDDP by EGCG could occur *in vivo*, we established an OVCAR3 ovarian xenograft model in nude mice as described in the Materials and Methods section. The body weight and tumor size were measured twice weekly. The body weights of the cDDP-treated groups were significantly lower compared with the other groups (Fig 6A). The administration of EGCG exhibited a protective effect against the cDDP-

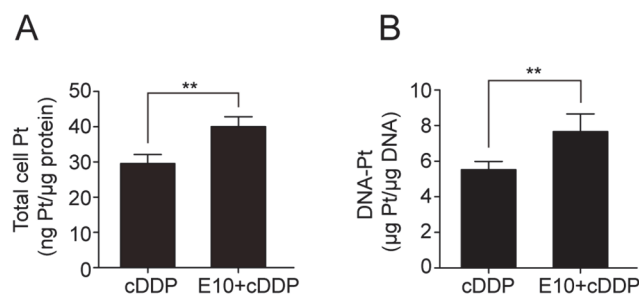


Fig 2. Effects of EGCG on Pt and DNA-Pt adducts accumulation in the cells. OVCAR3 cells were treated with/without 10 μ M EGCG and 30 μ M cDDP for 4 h, and then followed by ICP-MC assay. (A) Whole-cell Pt accumulation. (B) DNA-Pt adducts accumulation. (** P <0.01)

doi:10.1371/journal.pone.0125402.g002

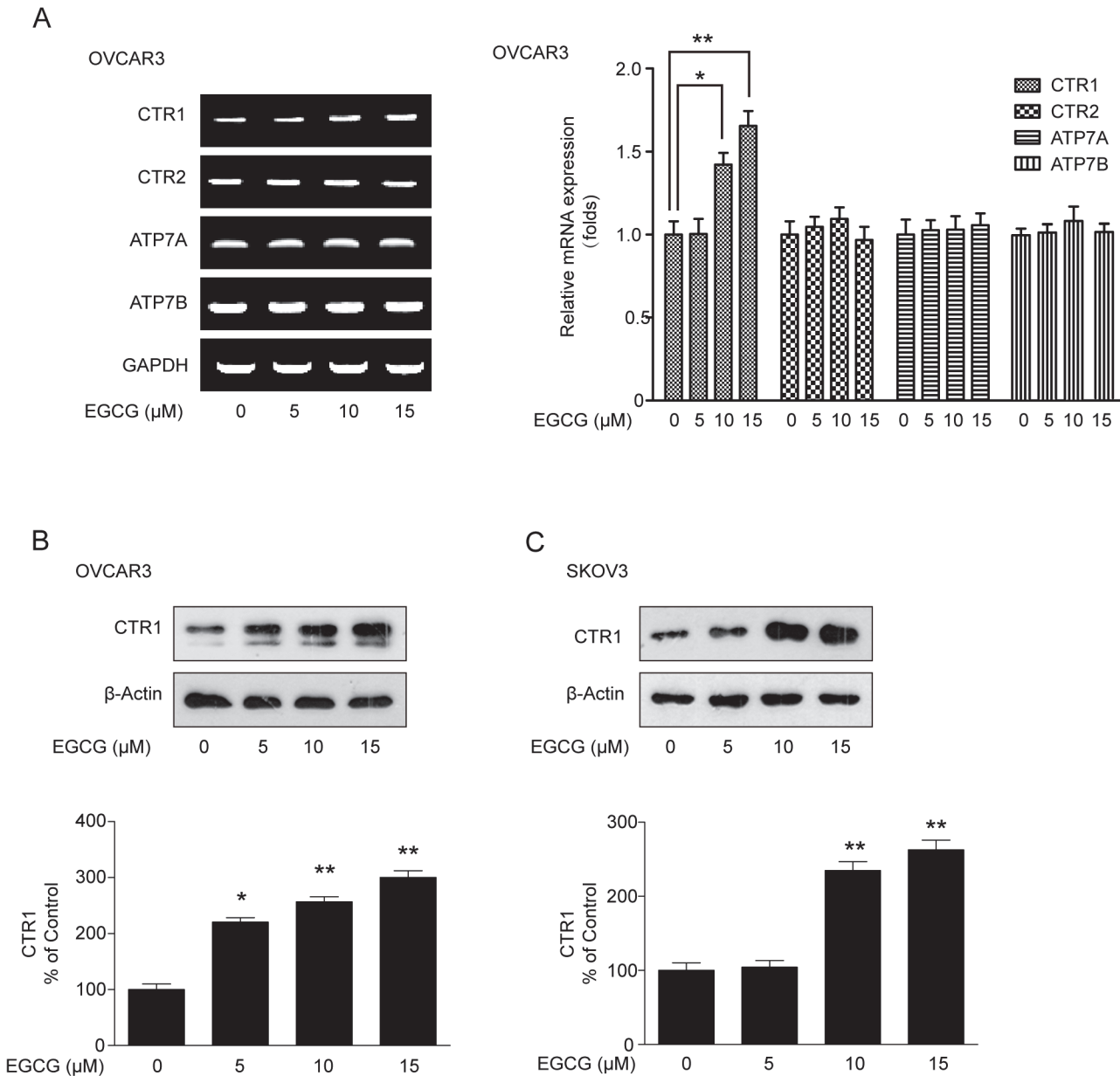


Fig 3. Effect of EGCG on the expression of copper transporters. (A) Effect of EGCG on mRNA expression of CTR1, CTR2, ATP7A and ATP7B. After OVCAR3 cells were treated with indicated concentrations of EGCG for 24h, RT-PCR and qPCR were carried out to measure the CTR1 mRNA expression. (B and C) Effect of EGCG on CTR1 protein expression in OVCAR3 and SKOV3 cells. The cells were treated with 10 μM EGCG for 24 h, then followed by western blot analysis. The bands were quantified with Image J software. (* $P < 0.05$, ** $P < 0.01$)

doi:10.1371/journal.pone.0125402.g003

induced weight loss. As shown in Fig 6A, EGCG or cDDP alone suppressed the growth of tumor, while EGCG combined with cDDP had a stronger inhibitory effect than other treatments, which was consistent with the results *in vitro* experiments.

The mRNA and protein expression of CTR1 were measured in tumor tissues (Fig 6B). As it was shown, EGCG increased the mRNA expression of CTR1 significantly. It also appeared that the protein expression of the CTR1 was significantly decreased by cDDP, but enhanced by EGCG and returned to a normal level by EGCG combined with cDDP (Fig 6C).

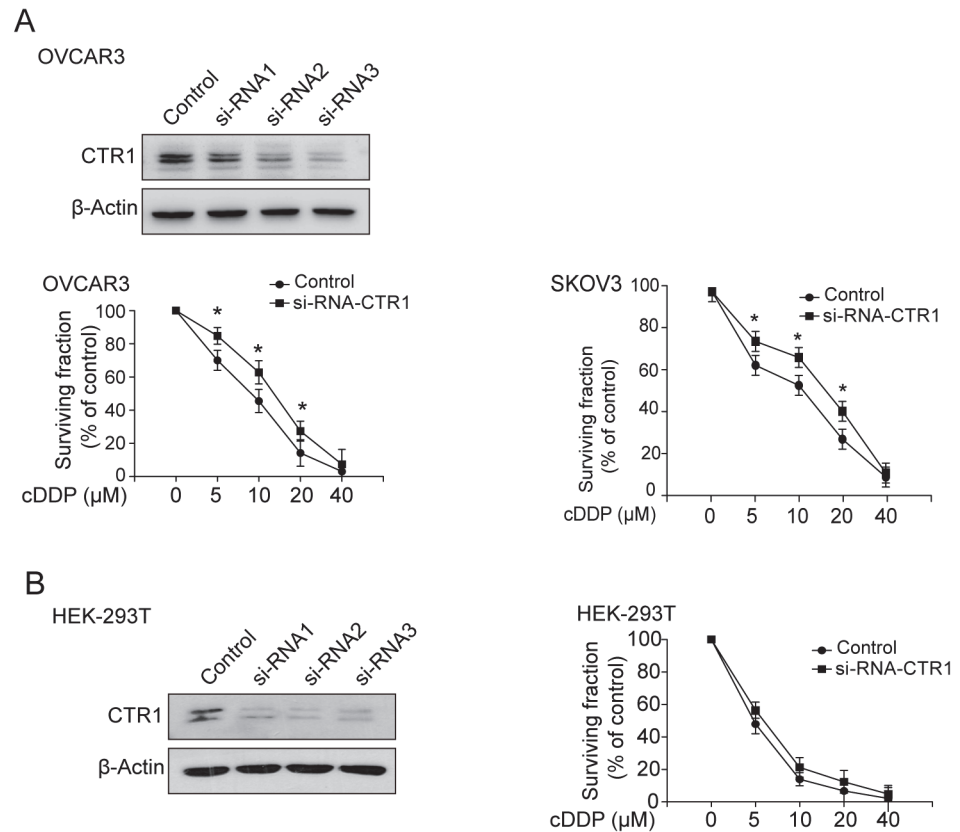


Fig 4. Effect of knock-down of CTR1 on the sensitivity of cells to cDDP. (A) Effect of knock-down of CTR1 on the sensitivity of ovary cancer cells to cDDP. OVCAR3 cells were transfected with three company synthetic si-RNAs or siRNA control and the western blot analysis showed si-RNA 3 exhibiting the best effect. After transfected with si-RNA3 or siRNA control, OVCAR3 and SKOV3 cells were treated with cDDP at various doses for 48 h and the cell survival fraction was detected by MTT assay. (B) Embryonic kidney HEK-293 cells were transfected with human CTR1 si-RNA3 or siRNA control. Then the cells were exposed by indicated doses of cDDP for 48 h and the cell survival fraction was detected by MTT assay. (* $P < 0.05$).

doi:10.1371/journal.pone.0125402.g004

The renal damage indicators such as kidney weight, blood urea nitrogen (BUN) and plasma creatinine were used to evaluate possible renal damage. The mice treated with cDDP, their kidney weights, BUN and creatinine were significantly higher than those of other groups. Administration of EGCG reduced the levels of these cDDP-induced kidney toxicity indicators. Treatment with EGCG alone did not affect these indicators (Table 1). All these results demonstrated that EGCG could partly protect against nephrotoxicity induced by cDDP *in vivo*. To investigate whether the protective effect of EGCG on cDDP-induced nephrotoxicity was associated with the uptake of cDDP, we measured the relative expression of CTR1 in kidney tissues. The expression of CTR1 had no significant changes in kidney tissues after the indicated treatments (Fig 6D).

Discussion

In the current study, we systematically investigated the effects of EGCG on copper transporters and the uptake and efflux of cDDP in ovary cancer cells and xenograft mice. To our knowledge, this is the first report demonstrating that EGCG increased CTR1 expression *in vitro* and *in vivo*. Also, EGCG prevented the degradation of CTR1 induced by cDDP. EGCG treatment in ovarian cancer resulted in a significant increase in sensitivity to cDDP, which might be due to

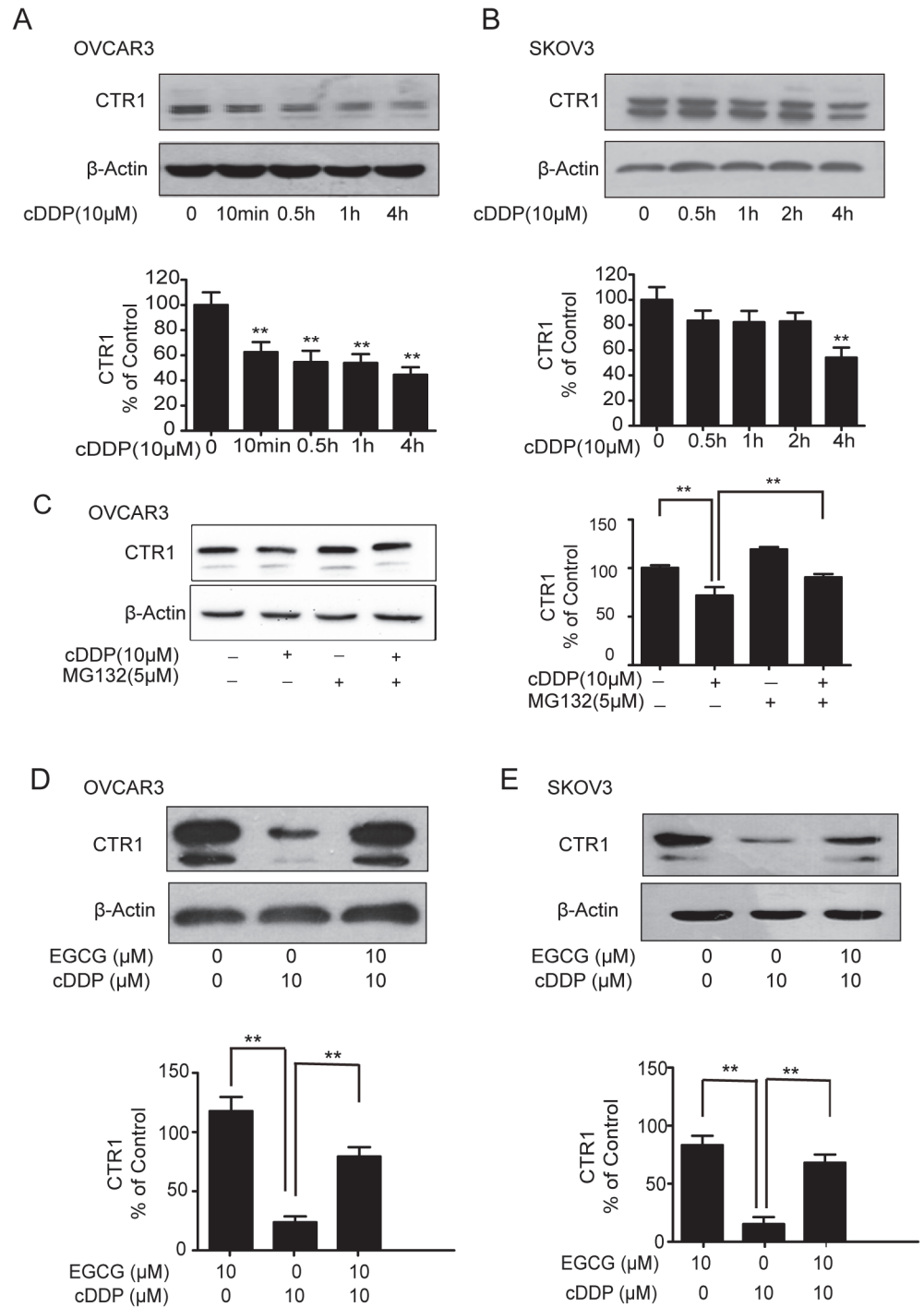


Fig 5. EGCG inhibits the degradation of CTR1 induced by cDDP. (A, B) The effect of cDDP on the expression of CTR1 in OVCAR3 and SKOV3 cells. The cells were treated with 10 μM cDDP for the indicated time and CTR1 protein expression were detected by western blot analysis. (C) The effect of MG132 on the degradation of CTR1. After OVCAR3 cells were pretreated with 5 μM MG132 for 10h, the cells were incubation with 10 μM cDDP for 14 h. Then followed by western blot analysis. (D, E) The effect of EGCG on cDDP-triggered decrease of CTR1. The OVCAR3 and SKOV3 cells were treated with/without 10μMcDDP in the presence/absence of 10μMcDDP for 24 h. CTR1 protein expression was detected. The bands were quantified with Image J software. (* $P < 0.05$, ** $P < 0.01$)

doi:10.1371/journal.pone.0125402.g005

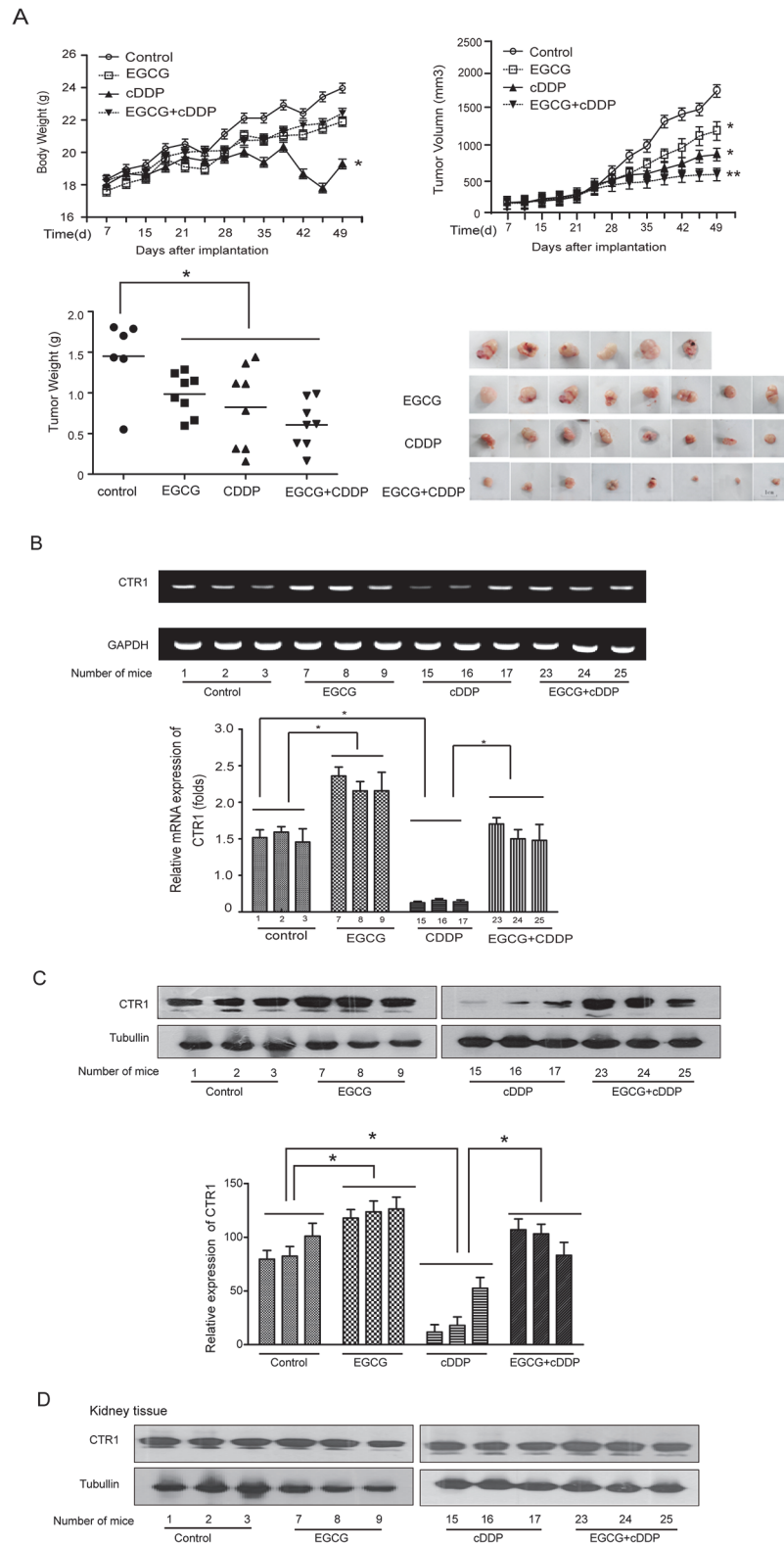


Fig 6. EGCG enhances the efficacy of cDDP on tumor responsiveness and attenuates the nephrotoxicity induced by cDDP in vivo. Four groups (control, EGCG, cDDP and EGCG+cDDP) were set up. Except there were 6 mice in control group, there were 8 mice for each of the other groups. The body weight (A) and the tumor size (A) were measured twice a week. (B) The mRNA expression of the CTR1 in

tumor tissues was measured by RT-PCR and real qPCR. (C) The expression of CTR1 in tumor tissue was assessed by western blotting. (D) The expression of CTR1 in kidney tissue was measured by western blotting. The bands were quantified by Image J software. (*P<0.05, **P<0.01)

doi:10.1371/journal.pone.0125402.g006

the up-regulation of CTR1, increased accumulation of cDDP and DNA-Pt adducts. Our findings provided a mechanism for the strategy of using EGCG as an adjuvant for ovarian cancer therapy.

Previous studies showed that the expression of CTR1 could be regulated under different copper stress at the transcriptional and post-translational levels. At the transcriptional level, the mRNA of CTR1 was regulated by the transcription factor Sp1 [33]. The zinc finger (ZF) domain of Sp1 was found to function as sensors of copper stress [33], and there existed a Copper-hCtr1-Sp1 Inter-Regulatory Loop in copper homeostasis [34]. Post-translational mechanisms have also been related to copper stress. Copper chelator or copper-lowering agents were shown to induce CTR1 expression and enhance the uptake of cDDP by cells and their sensitivity to cDDP [10, 35, 36]. High concentrations of copper and cDDP induced endocytosis or degradation of CTR1 [15,37,38]. The mechanism through which EGCG mediates CTR1 expression is still not understood. More studies on this topic are needed.

In the present study, cDDP(in 10 μM) caused rapid degradation of CTR1 (Fig 5A and 5B). Multiple lines of evidence indicated that cDDP-induced degradation of CTR1 involves ubiquitination and proteosomal degradation. A proteasome inhibitor (bortezomib, actacystin or MG132) given together with cDDP blocked cDDP-induced loss of CTR1 and enhanced delivery of cDDP [39–41]. Combination of cDDP with EGCG or MG132 both inhibited the degradation of CTR1 induced by cDDP (Fig 5C, 5D and 5E). It was reported that EGCG could inhibit the proteasome activity [22, 42]. The inhibition of ubiquitin-proteasome by EGCG contributed to overcome resistance to various chemotherapeutic drugs and enhance the effect of chemotherapy [43]. Thus, the inhibition of cDDP-induced degradation of CTR1 by EGCG might be due to its action on ubiquitin-proteasome.

Nephrotoxicity is the major complication of the clinical application of cDDP and limits its long-term usage. Previous studies have reported that EGCG could prevent the deleterious effects of cDDP [44–46]. Our study also indicated that EGCG had a protective effect against cDDP-induced nephrotoxicity (Table 1). One of the reasons could be that EGCG didn't change CTR1 expression in kidney tissues (Fig 6), while EGCG induced CTR1 expression in ovarian cancer cells and tumor tissues (Figs 3 and 6). Knockdown of CTR1 in human embryonic kidney HEK-293T cells had on significant changes to cDDP sensitivity (Fig 4B). Why EGCG did not change CTR1 expression in kidney cells and tissues is interesting and needs further investigation.

The protective effect of EGCG against nephrotoxicity may be also due to its antioxidant and anti-inflammation activities as suggested previously [44–46]. Recent studies suggested that

Table 1. Changes of kidney weight and kidney injury indicators in various groups.

Experimental group	Control (n = 6)	EGCG (n = 8)	cDDP (n = 8)	EGCG+cDDP (n = 8)
Kidney weight/body weight(%)	1.32±0.12	1.49±0.09	1.69±0.25*	1.46±0.23
BUN(mmol/l)	15.26±1.96	16.04±1.28	19.46±2.77*	16.5±1.76
Creatinine(μmol/l)	2.02±0.97	2.69±0.94	3.79±1.57*	2.38±0.88

Values are presented as mean ± SD. The “n” means mice number.

* values differ significantly from control (p<0.05)

doi:10.1371/journal.pone.0125402.t001

organic cation transporter 2 (OCT2) was a target for protective interventions in cDDP-induced nephrotoxicity [47–49]. Our preliminary data showed that EGCG could regulate OCT2 as well, and this is under further investigation.

In summary, this is the first report that EGCG could induce the expression of CTR1, leading to the accumulation of cellular cDDP and cDDP-DNA adducts and enhanced sensitivity of ovarian cancer cells to cDDP. The findings provided a novel mechanism for exploring new strategies for green tea polyphenol EGCG as an adjuvant for the treatment of ovarian cancer.

Author Contributions

Conceived and designed the experiments: Xuemin Wang QF. Performed the experiments: Xuemin Wang PJ PW. Analyzed the data: C. Yang Xuerong Wang. Contributed reagents/materials/analysis tools: C. Yang Xuerong Wang QF. Wrote the paper: Xuemin Wang QF.

References

1. Garces AH, Dias MS, Paulino E, Ferreira CG, de Melo AC. Treatment of ovarian cancer beyond chemotherapy: Are we hitting the target? *Cancer Chemother Pharmacol* 2015; 75:221–34. doi: [10.1007/s00280-014-2581-y](https://doi.org/10.1007/s00280-014-2581-y) PMID: [25212538](https://pubmed.ncbi.nlm.nih.gov/25212538/)
2. Mei L, Chen H, Wei DM, Fang F, Liu GJ, Xie HY, et al. Maintenance chemotherapy for ovarian cancer. *Cochrane Database Syst Rev* 2013; 6:D7414.
3. Jamieson ER, Lippard SJ. Structure, Recognition, and Processing of Cisplatin-DNA Adducts. *Chem Rev* 1999; 99:2467–98. PMID: [11749487](https://pubmed.ncbi.nlm.nih.gov/11749487/)
4. Galluzzi L, Senovilla L, Vitale I, Michels J, Martins I, Kepp O, et al. Molecular mechanisms of cisplatin resistance. *Oncogene* 2012; 31:1869–83. doi: [10.1038/onc.2011.384](https://doi.org/10.1038/onc.2011.384) PMID: [21892204](https://pubmed.ncbi.nlm.nih.gov/21892204/)
5. Safaei R. Role of copper transporters in the uptake and efflux of platinum containing drugs. *Cancer Lett* 2006; 234:34–39. PMID: [16297532](https://pubmed.ncbi.nlm.nih.gov/16297532/)
6. Hall MD, Okabe M, Shen DW, Liang XJ, Gottesman MM. The role of cellular accumulation in determining sensitivity to platinum-based chemotherapy. *Annu Rev Pharmacol Toxicol* 2008; 48:495–535. PMID: [17937596](https://pubmed.ncbi.nlm.nih.gov/17937596/)
7. Tsigelny IF, Sharikov Y, Greenberg JP, Miller MA, Kouznetsova VL, Larson CA, et al. An all-atom model of the structure of human copper transporter 1. *Cell Biochem Biophys* 2012; 63:223–34. doi: [10.1007/s12013-012-9358-x](https://doi.org/10.1007/s12013-012-9358-x) PMID: [22569840](https://pubmed.ncbi.nlm.nih.gov/22569840/)
8. Lee J, Petris MJ, Thiele DJ. Characterization of mouse embryonic cells deficient in the ctr1 high affinity copper transporter. Identification of a Ctr1-independent copper transport system. *J Biol Chem* 2002; 277:40253–9. PMID: [12177073](https://pubmed.ncbi.nlm.nih.gov/12177073/)
9. Ishida S, Lee J, Thiele DJ, Herskowitz I. Uptake of the anticancer drug cisplatin mediated by the copper transporter Ctr1 in yeast and mammals. *Proc Natl Acad Sci U S A* 2002; 99:14298–302. PMID: [12370430](https://pubmed.ncbi.nlm.nih.gov/12370430/)
10. Ishida S, McCormick F, Smith-McCune K, Hanahan D. Enhancing tumor-specific uptake of the anticancer drug cisplatin with a copper chelator. *Cancer Cell* 2010; 17(6):574–83. doi: [10.1016/j.ccr.2010.04.011](https://doi.org/10.1016/j.ccr.2010.04.011) PMID: [20541702](https://pubmed.ncbi.nlm.nih.gov/20541702/)
11. Noordhuis P, Laan AC, van de Born K, Losekoot N, Kathmann I, Peters GJ. Oxaliplatin activity in selected and unselected human ovarian and colorectal cancer cell lines. *Biochem Pharmacol* 2008; 76(1):53–61. doi: [10.1016/j.bcp.2008.04.007](https://doi.org/10.1016/j.bcp.2008.04.007) PMID: [18508032](https://pubmed.ncbi.nlm.nih.gov/18508032/)
12. Holzer AK, Samimi G, Katano K, Naerdemann W, Lin X, Safaei R, et al. The copper influx transporter human copper transport protein 1 regulates the uptake of cisplatin in human ovarian carcinoma cells. *Mol Pharmacol* 2004; 66: 817–23. PMID: [15229296](https://pubmed.ncbi.nlm.nih.gov/15229296/)
13. Lin X, Okuda T, Holzer A, Howell SB. The copper transporter CTR1 regulates cisplatin uptake in *Saccharomyces cerevisiae*. *Mol Pharmacol* 2002; 62:1154–9. PMID: [12391279](https://pubmed.ncbi.nlm.nih.gov/12391279/)
14. Larson CA, Blair BG, Safaei R, Howell SB. The role of the mammalian copper transporter 1 in the cellular accumulation of platinum-based drugs. *Mol Pharmacol* 2009; 75:324–30. doi: [10.1124/mol.108.052381](https://doi.org/10.1124/mol.108.052381) PMID: [18996970](https://pubmed.ncbi.nlm.nih.gov/18996970/)
15. Holzer AK, Katano K, Klomp LW, Howell SB. Cisplatin rapidly down-regulates its own influx transporter hCTR1 in cultured human ovarian carcinoma cells. *Clin Cancer Res* 2004; 10:6744–9. PMID: [15475465](https://pubmed.ncbi.nlm.nih.gov/15475465/)

16. Safaei R, Maktabi MH, Blair BG, Larson CA, Howell SB. Effects of the loss of Atox1 on the cellular pharmacology of cisplatin. *J Inorg Biochem* 2009; 103:333–41. doi: [10.1016/j.jinorgbio.2008.11.012](https://doi.org/10.1016/j.jinorgbio.2008.11.012) PMID: [19124158](https://pubmed.ncbi.nlm.nih.gov/19124158/)
17. Blair BG, Larson CA, Adams PL. Copper transporter 2 regulates endocytosis and controls tumor growth and sensitivity to cisplatin in vivo. *Mol Pharmacol* 2011; 79:157–66. doi: [10.1124/mol.110.068411](https://doi.org/10.1124/mol.110.068411) PMID: [20930109](https://pubmed.ncbi.nlm.nih.gov/20930109/)
18. Blair BG, Larson CA, Safaei R, Howell SB. Copper transporter 2 regulates the cellular accumulation and cytotoxicity of Cisplatin and Carboplatin. *Clin Cancer Res* 2009; 15:4312–21. doi: [10.1158/1078-0432.CCR-09-0311](https://doi.org/10.1158/1078-0432.CCR-09-0311) PMID: [19509135](https://pubmed.ncbi.nlm.nih.gov/19509135/)
19. Blair BG, Larson CA, Adams PL, Abada PB, Safaei R, Howell SB. Regulation of copper transporter 2 expression by copper and cisplatin in human ovarian carcinoma cells. *Mol Pharmacol* 2010; 77:912–21. doi: [10.1124/mol.109.062836](https://doi.org/10.1124/mol.109.062836) PMID: [20194531](https://pubmed.ncbi.nlm.nih.gov/20194531/)
20. Samimi G, Varki NM, Wilczynski S, Safaei R, Alberts DS, Howell SB. Increase in expression of the copper transporter ATP7A during platinum drug-based treatment is associated with poor survival in ovarian cancer patients. *Clin Cancer Res* 2003; 9:5853–9. PMID: [14676106](https://pubmed.ncbi.nlm.nih.gov/14676106/)
21. Nakayama K, Kanzaki A, Ogawa K, Miyazaki K, Neamati N, Takebayashi Y. Copper-transporting P-type adenosine triphosphatase (ATP7B) as a cisplatin based chemoresistance marker in ovarian carcinoma: comparative analysis with expression of MDR1, MRP1, MRP2, LRP and BCRP. *Int J Cancer* 2002; 101(5):488–95. PMID: [12216079](https://pubmed.ncbi.nlm.nih.gov/12216079/)
22. Yang CS, Wang X, Lu G, Picinich SC. Cancer prevention by tea: animal studies, molecular mechanisms and human relevance. *Nat Rev Cancer* 2009; 9: 429–39. doi: [10.1038/nrc2641](https://doi.org/10.1038/nrc2641) PMID: [19472429](https://pubmed.ncbi.nlm.nih.gov/19472429/)
23. Yang CS, Feng Q. Chemo/Dietary prevention of cancer: perspectives in China. *J Biomed Res* 2014; 28:447–55 doi: [10.7555/JBR.28.20140079](https://doi.org/10.7555/JBR.28.20140079) PMID: [25469113](https://pubmed.ncbi.nlm.nih.gov/25469113/)
24. Yang H, Landis-Piwowar K, Chan TH, Dou QP. Green tea polyphenols as proteasome inhibitors: implication in chemoprevention. *Curr Cancer Drug Targets* 2011; 11:296–306. PMID: [21247384](https://pubmed.ncbi.nlm.nih.gov/21247384/)
25. Lecumberri E, Dupertuis YM, Miralbell R, Pichard C. Green tea polyphenol epigallocatechin-3-gallate (EGCG) as adjuvant in cancer therapy. *Clin Nutr* 2013; 32:894–903. doi: [10.1016/j.clnu.2013.03.008](https://doi.org/10.1016/j.clnu.2013.03.008) PMID: [23582951](https://pubmed.ncbi.nlm.nih.gov/23582951/)
26. Hagen RM, Chedea VS, Mintoff CP, Bowler E, Morse HR, Lodomery MR. Epigallocatechin-3-gallate promotes apoptosis and expression of the caspase 9a splice variant in PC3 prostate cancer cells. *Int J Oncol* 2013; 43:194–200. doi: [10.3892/ijo.2013.1920](https://doi.org/10.3892/ijo.2013.1920) PMID: [23615977](https://pubmed.ncbi.nlm.nih.gov/23615977/)
27. Chen H, Landen CN, Li Y, Alvarez RD, Tollefsbol TO. Enhancement of Cisplatin-Mediated Apoptosis in Ovarian Cancer Cells through Potentiating G2/M Arrest and p21 Upregulation by Combinatorial Epigallocatechin Gallate and Sulforaphane. *J Oncol* 2013; 2013:872957. doi: [10.1155/2013/872957](https://doi.org/10.1155/2013/872957) PMID: [23476648](https://pubmed.ncbi.nlm.nih.gov/23476648/)
28. Chan MM, Soprano KJ, Weinstein K, Fong D. Epigallocatechin-3-gallate delivers hydrogen peroxide to induce death of ovarian cancer cells and enhances their cisplatin susceptibility. *J Cell Physiol* 2006; 207:389–96. PMID: [16402374](https://pubmed.ncbi.nlm.nih.gov/16402374/)
29. Shervington A, Pawar V, Menon S, Thakkar D, Patel R. The sensitization of glioma cells to cisplatin and tamoxifen by the use of catechin. *Mol Biol Rep* 2009; 36:1181–6. doi: [10.1007/s11033-008-9295-3](https://doi.org/10.1007/s11033-008-9295-3) PMID: [18581255](https://pubmed.ncbi.nlm.nih.gov/18581255/)
30. Lee SH, Nam HJ, Kang HJ, Kwon HW, Lim YC. Epigallocatechin-3-gallate attenuates head and neck cancer stem cell traits through suppression of Notch pathway. *Eur J Cancer* 2013; 49:3210–8. doi: [10.1016/j.ejca.2013.06.025](https://doi.org/10.1016/j.ejca.2013.06.025) PMID: [23876835](https://pubmed.ncbi.nlm.nih.gov/23876835/)
31. Deng PB, Hu CP, Xiong Z, Yang HP, Li YY. Treatment with EGCG in NSCLC leads to decreasing interstitial fluid pressure and hypoxia to improve chemotherapy efficacy through rebalance of Ang-1 and Ang-2. *Chin J Nat Med* 2013; 11(3):245–53. doi: [10.1016/S1875-5364\(13\)60023-0](https://doi.org/10.1016/S1875-5364(13)60023-0) PMID: [23725836](https://pubmed.ncbi.nlm.nih.gov/23725836/)
32. Zhou DH, Wang X, Feng Q. EGCG enhances the efficacy of cisplatin by downregulating hsa-miR-98-5p in NSCLC A549 cells. *Nutr Cancer* 2014; 66:636–44. doi: [10.1080/01635581.2014.894101](https://doi.org/10.1080/01635581.2014.894101) PMID: [24712372](https://pubmed.ncbi.nlm.nih.gov/24712372/)
33. Song IS, Chen HH, Aibal, Hossain A, Liang ZD, Klomp LW, Kuo MT. Transcription factor Sp1 plays an important role in the regulation of copper homeostasis in mammalian cells. *Mol Pharmacol* 2008; 74:705–13. doi: [10.1124/mol.108.046771](https://doi.org/10.1124/mol.108.046771) PMID: [18483225](https://pubmed.ncbi.nlm.nih.gov/18483225/)
34. Liang ZD, Tsai WB, Lee MY, Savaraj N, Kuo MT. Specificity protein 1 (sp1) oscillation is involved in copper homeostasis maintenance by regulating human high-affinity copper transporter 1 expression. *Mol Pharmacol* 2012; 81:455–64. doi: [10.1124/mol.111.076422](https://doi.org/10.1124/mol.111.076422) PMID: [22172574](https://pubmed.ncbi.nlm.nih.gov/22172574/)
35. Chen HH, Kuo MT. Overcoming platinum drug resistance with copper-lowering agents. *Anticancer Res* 2013; 33:4157–61. PMID: [24122978](https://pubmed.ncbi.nlm.nih.gov/24122978/)

36. Liang ZD, Long Y, Tsai WB, Fu S, Kurzrock R, Gagea-Iurascu M, et al. Mechanistic basis for overcoming platinum resistance using copper chelating agents. *Mol Cancer Ther* 2012; 11:2483–94. doi: [10.1158/1535-7163.MCT-12-0580](https://doi.org/10.1158/1535-7163.MCT-12-0580) PMID: [22914438](https://pubmed.ncbi.nlm.nih.gov/22914438/)
37. Guo Y, Smith K, Lee J, Thiele DJ, Petris MJ. Identification of methionine-rich clusters that regulate copper-stimulated endocytosis of the human Ctr1 copper transporter. *J Biol Chem* 2004; 279(17):17428–33. PMID: [14976198](https://pubmed.ncbi.nlm.nih.gov/14976198/)
38. Molloy SA, Kaplan JH. Copper-dependent recycling of hCTR1, the human high affinity copper transporter. *J Biol Chem* 2009; 284:29704–13. doi: [10.1074/jbc.M109.000166](https://doi.org/10.1074/jbc.M109.000166) PMID: [19740744](https://pubmed.ncbi.nlm.nih.gov/19740744/)
39. Holzer AK, Howell SB. The internalization and degradation of human copper transporter 1 following cisplatin exposure. *Cancer Res* 2006; 66:10944–52. PMID: [17108132](https://pubmed.ncbi.nlm.nih.gov/17108132/)
40. Jandial DD, Farshchi-Heydari S, Larson CA, Elliott GI, Wrasidlo WJ, Howell SB. Enhanced delivery of cisplatin to intraperitoneal ovarian carcinomas mediated by the effects of bortezomib on the human copper transporter 1. *Clin Cancer Res* 2009; 15:553–60. doi: [10.1158/1078-0432.CCR-08-2081](https://doi.org/10.1158/1078-0432.CCR-08-2081) PMID: [19147760](https://pubmed.ncbi.nlm.nih.gov/19147760/)
41. Mortenson MM, Schlieman MG, Virudachalam S, Bold RJ. Effects of the proteasome inhibitor bortezomib alone and in combination with chemotherapy in the A549 non-small-cell lung cancer cell line. *Cancer Chemother Pharmacol* 2004; 54:343–53. PMID: [15197486](https://pubmed.ncbi.nlm.nih.gov/15197486/)
42. Nam S, Smith DM, Dou QP. Ester bond-containing tea polyphenols potently inhibit proteasome activity in vitro and in vivo. *J Biol Chem* 2001; 276:13322–30. PMID: [11278274](https://pubmed.ncbi.nlm.nih.gov/11278274/)
43. Shen M, Chan TH, Dou QP. Targeting tumor ubiquitin-proteasome pathway with polyphenols for chemosensitization. *Anticancer Agents Med Chem* 2012; 12(8):891–901. PMID: [22292765](https://pubmed.ncbi.nlm.nih.gov/22292765/)
44. El-Mowafy AM, Salem HA, Al-Gayyar MM, El-Mesery ME, El-Azab MF. Evaluation of renal protective effects of the green-tea (EGCG) and red grape resveratrol: role of oxidative stress and inflammatory cytokines. *Nat Prod Res* 2011; 25:850–6. doi: [10.1080/14786419.2010.533669](https://doi.org/10.1080/14786419.2010.533669) PMID: [21462079](https://pubmed.ncbi.nlm.nih.gov/21462079/)
45. El-Mowafy AM, Al-Gayyar MM, Salem HA, El-Mesery ME, Darweish MM. Novel chemotherapeutic and renal protective effects for the green tea (EGCG): role of oxidative stress and inflammatory-cytokine signaling. *Phytomedicine* 2010; 17:1067–75. doi: [10.1016/j.phymed.2010.08.004](https://doi.org/10.1016/j.phymed.2010.08.004) PMID: [20851589](https://pubmed.ncbi.nlm.nih.gov/20851589/)
46. Sahin K, Tuzcu M, Gencoglu H, Dogukan A, Timurkan M, Sahin N, et al. Epigallocatechin-3-gallate activates Nrf2/HO-1 signaling pathway in cisplatin-induced nephrotoxicity in rats. *Life Sci* 2010; 87:240–5. doi: [10.1016/j.lfs.2010.06.014](https://doi.org/10.1016/j.lfs.2010.06.014) PMID: [20619277](https://pubmed.ncbi.nlm.nih.gov/20619277/)
47. Ciarimboli G, Deuster D, Knief A, Sperling M, Holtkamp M, Edemir B, Pavenstädt H, et al. Organic cation transporter 2 mediates cisplatin-induced oto- and nephrotoxicity and is a target for protective interventions. *Am J Pathol* 2010; 176:1169–80. doi: [10.2353/ajpath.2010.090610](https://doi.org/10.2353/ajpath.2010.090610) PMID: [20110413](https://pubmed.ncbi.nlm.nih.gov/20110413/)
48. Ciarimboli G, Ludwig T, Lang D, Pavenstädt H, Koepsell H, Piechota HJ, et al. Cisplatin nephrotoxicity is critically mediated via the human organic cation transporter 2. *Am J Pathol* 2005; 167:1477–84. PMID: [16314463](https://pubmed.ncbi.nlm.nih.gov/16314463/)
49. Yonezawa A, Masuda S, Nishihara K, Yano I, Katsura T, Inui K. Association between tubular toxicity of cisplatin and expression of organic cation transporter rOCT2 (Slc22a2) in the rat. *Biochem Pharmacol* 2005; 70:1823–31. PMID: [16242669](https://pubmed.ncbi.nlm.nih.gov/16242669/)