

Original Article

Sensorimotor, cognitive and affective behavior according to perceived level of disability in patients with chronic low back pain: an observational cross-sectional study

Mónica Grande-Alonso^{1,2}, Diego Pro-Marín^{1,2}, Irene Piedra-Garrosa¹, Roy La Touche^{1,3}, Alba Paris-Aleman^{1,3}

¹Motion in Brains Research Group, Institute of Neuroscience and Sciences of the Movement (INCIMOV), Departamento de Fisioterapia, Centro Superior de Estudios Universitarios La Salle, Universidad Autónoma de Madrid, Aravaca, Calle Ganimedes, Madrid, Spain;

²Instituto de Rehabilitación Funcional La Salle, Aravaca, Calle Ganimedes, Madrid, Spain;

³Instituto de Dolor Craneofacial y Neuromusculoesquelético (INDCRAN), Madrid, Calle Luisa Fernanda, Spain

Abstract

Objectives: The aim was to evaluate the influence of the level of disability on sensorimotor and psychological variables in nonspecific chronic low back pain (NCLBP). **Methods:** A cross-sectional observational study was performed with 90 participants, divided into one group with NCLBP (60 participants) and one asymptomatic group (30 participants). Symptomatic participants were divided into a “major” or “minor” disability group using the Roland Morris Disability Questionnaire score, resulting in two groups of 30 participants. All participants completed a series of self-administered questionnaires and performed sensorimotor tests. **Results:** There were no statistically significant differences in the sensorimotor variables except in pain intensity, which was greater in the NCLBP group with high lumbar disability. There were statistically significant differences between the symptomatic groups in the degree of self-efficacy, pain catastrophism and kinesiophobia. **Conclusions:** Patients with NCLBP and high levels of disability present greater pain intensity and significantly poorer results in psychological variables compared with those with NCLBP and low levels of disability. In contrast, there were no differences for sensorimotor variables between the patients with NCLBP and high levels of disability and those with low levels of disability.

Keywords: Disability, Nonspecific Chronic Low Back Pain, Psychological Factors, Self-Efficacy

Introduction

Low back pain (LBP) is the most prevalent musculoskeletal problem, so much so that the scientific evidence has indicated that approximately 80% of the world's population will experience an episode in their lifetime^{1,2}. LBP is a multifactorial disorder, which increases its complexity, and presents a high risk of chronicity^{3,4}. Worldwide, it is estimated

that approximately 23% of the population experiences chronic LBP (CLBP)^{5,6}.

Studies have shown that approximately 90% of cases of CLBP are of a nonspecific nature (NCLBP), which is defined as persistent pain with no structural cause to explain the symptoms^{7,8}. Research studies suggest that NCLBP is a complex clinical entity in which physical, cognitive, psychological, lifestyle, neurophysiological and societal factors interact and contribute to the maintenance of symptoms⁹⁻¹³.

The involvement of psychosocial and functional factors and their contribution to maintaining the symptoms explains why, unlike in acute LBP, peripheral mechanisms are usually missing in CLBP, with a greater involvement of central mechanisms consistent with a central sensitisation process^{9,14,15}. Central sensitisation is a state of nervous system hypersensitivity characterised by the presence of

The authors have no conflict of interest.

Corresponding author: Roy La Touche, PhD, PT, Professor, Departamento de Fisioterapia, Facultad de Ciencias de la Salud, Centro Superior de Estudios Universitarios La Salle, Calle la Salle, nº 10, 28023 Madrid, Spain
E-mail: roylatouche@yahoo.es

Edited by: G. Lyrītis

Accepted 1 November 2022



allodynia or secondary hyperalgesia. In patients with NCLBP, central sensitisation can manifest as a decrease in pain thresholds to pressure, widespread pain, an alteration in the temporal summation of stimuli, an influence of psychological variables and an alteration of functional variables¹⁶⁻¹⁹.

A common finding in this type of central abnormality is an increased sensitivity to pressure^{20,21}. In addition to this finding, studies have concluded that the factors that most contribute to symptom chronicity in patients with NCLBP are the presence of maladaptive coping behaviours, lack of self-efficacy, alteration of functional variables, a poorer perception of one's health condition and the presence of psychological factors²².

In addition to these factors, one of the most important variables to assess in this population is disability. CLBP is the leading cause of disability, entailing a high socioeconomic cost^{23,24}, so much so that a study conducted in 2018 showed that the length of time lived with disability caused by low back pain increased by 54% between 1990 and 2015²⁵. In this line, studies have shown that patients who present major levels of disability can present greater involvement of somatosensory, physical and psychological variables²⁶⁻²⁹. Numerous studies have determined that factors such as education, work activity, socioeconomic level, physical inactivity, pain intensity and duration, fatigue, depression, self-efficacy and fear of pain are determinants in disability^{30,31}. In addition, a recent systematic review showed that a higher degree of kinesiophobia is associated with higher levels of pain intensity, pain severity and disability, as well as lower quality of life³². However, other authors have indicated that pain and disability are not necessarily correlated^{27,33}.

The assessment and analysis of the degree of disability is highly relevant in patients with LBP at risk of chronicity, given that a review conducted last year showed that disability together with pain intensity, emotional distress, expectations of recovery, pain catastrophism and physical demands at work are predictors of symptom maintenance; however, we do not know how differing degrees of disability can influence other factors of a psychological or sensorimotor nature³⁴.

There is a lack of evidence as to whether the degree of disability affects sensorimotor or psychological variables in patients with NCLBP. Therefore, the main objective of this study was to investigate the influence of the degree of lumbar disability on sensorimotor variables. The secondary objective was to observe how the degree of lumbar disability affects psychological variables.

Materials and Methods

Study design

We conducted an observational cross-sectional study using non-probabilistic sampling to assess sensorimotor and psychosocial variables in asymptomatic individuals and individuals with NCLBP. The study was conducted according to the Strengthening the Reporting of Observational Studies in Epidemiology (STROBE) declaration³⁵. The study also

followed the principles of the Declaration of Helsinki, and the Ethics Committee of University La Salle approved the study (CSEULS-PI-126/2016). Written informed consent was obtained from all participants.

Participants

The sample consisted of 90 participants, 60 of whom had NCLBP and 30 of whom were asymptomatic. The patients with NCLBP were divided into 2 groups, one with "major" and the other with "minor" lumbopelvic disability based on the median score achieved in the Roland-Morris Disability Questionnaire³⁶. This procedure for segmenting the sample on the basis of the median data has been used in other research studies with other study variables^{37,38}. Both the major disability and minor disability groups consisted of 30 participants. The patients with NCLBP were recruited from the Primary Healthcare Center of Miraflores (Alcobendas, Spain), while the asymptomatic participants were recruited in the local community using leaflets, posters and social media between January 2020 and June 2021. The assessment of the symptomatic subjects was carried out at Primary Healthcare Center of Miraflores (Alcobendas, Spain), in a room with a stretcher dedicated solely to carrying out the research. As for the asymptomatic subjects, they were evaluated in a similar room at the La Salle University (Aravaca, Spain).

Inclusion criteria

We selected patients who met all of the following inclusion criteria: a) LBP for at least 6 months; b) the presence of NCLBP which is defined in the evidence as "... tension, pain and/or stiffness in the lumbar region for which no specific cause of pain can be identified and which that it is not possible to identify a specific cause of the pain and has a duration of more than 3 months"³⁹; c) not having undergone back surgery; d) having no specific spinal disease; and e) between 18 and 65 years of age. The participants were asked not to take any medication 24-48 h before the evaluation so as not to mask the symptoms that each patient usually presents with.

The inclusion criteria for the asymptomatic group were a) not having experienced any type of lumbopelvic pain in the 6 months prior to the intervention and b) not presenting any chronic musculoskeletal pain or systemic disease.

Exclusion criteria

The participants were excluded from the NCLBP group if they met any of the following criteria: a) presence of neurological signs (such as weakness perceived in the lower limbs); b) specific spinal disease; c) having undergone back surgery; and d) undergoing another physiotherapy for LBP at the same time.

The exclusion criteria applicable to all patients in the control and NCLBP groups were a) any cognitive disability that presents impairment for visualizing the audiovisual material;

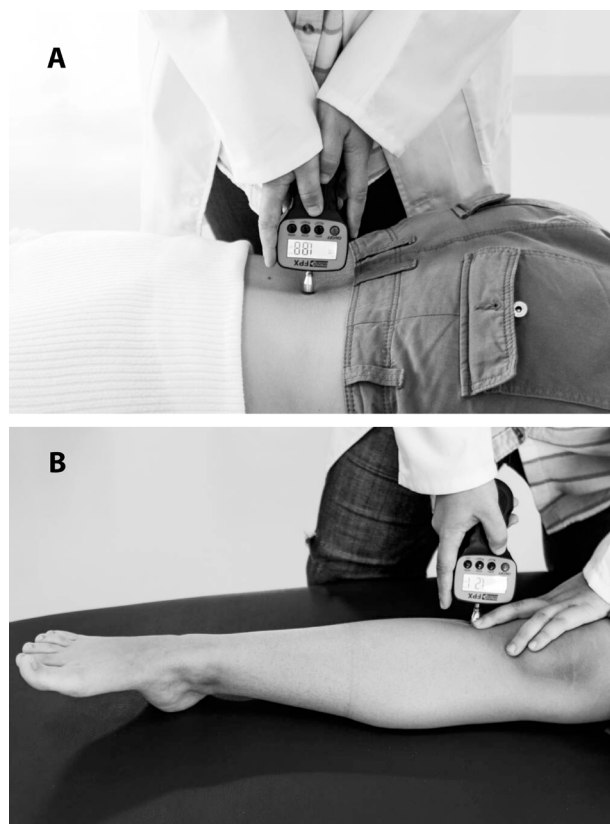


Figure 1. A) PPT evaluation on the spinous process of L2. B) PPT evaluation on the right leg.

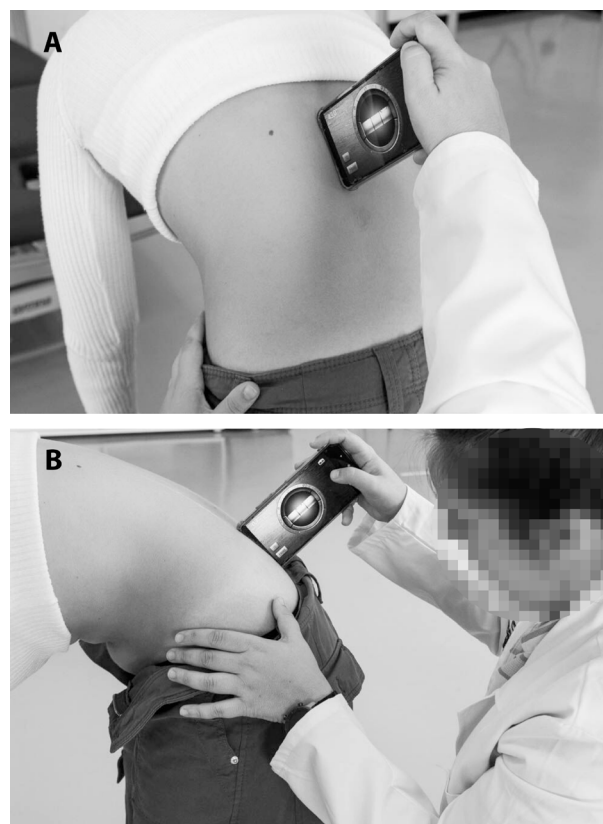


Figure 2. A) ROMF assessment at the level of the T12 process B) ROMF assessment at the level of the S2 process.

b) illiteracy; c) difficulties communicating or understanding; and d) insufficient comprehension of the language to follow the instructions for the measurements.

Procedure

After consenting to participate, all participants underwent a baseline assessment. Each participant had to complete a sociodemographic questionnaire, a set of self-report measures (low back pain disability, self-efficacy, pain catastrophism, fear of movement, depression and anxiety), and finally, a sensorimotor examination was performed (pain intensity, range of motion in flexion, lumbar extensor strength).

A trained physiotherapist (4 weeks of training in the assessment protocol), performed in the first place the pressure pain threshold (PPT) assessment. For this assessment, the participants were initially placed in prone position, and the physiotherapist applied pressure with an algometer on the spinous process of L2 (Figure 1A). The participant then indicated when they began to feel pain. Subsequently, the same application was performed in supine position at 3 cm caudally and medially from the anterior tibial tuberosity on the right leg (Figure 1B). As

before, the participant indicated when they began to feel pain^{40,41}. The assessment was performed by placing the algometer against the tissue vertically, increasing the force at a constant rate of 1 kg/cm². The researcher instructed the individuals: say “yes” when the sensation changes from pressure to a feeling of pain.

Subsequently, the range of motion in flexion (ROMF) was assessed. To this end, a digital inclinometer based on the iHandy mobile app was employed⁴². The protocol consisted of the following process: the participants stood up, with their arms along the sides of their bodies. The physiotherapist marked the spinous process of T12 and S2 to place the mobile device (Figure 2A, B). The patients then performed a maximum flexion of the trunk⁴³.

Lastly, the lumbopelvic strength assessment was conducted with the participants in 2 positions⁴⁴. In the first position, the participants were asked to stand on the dynamometer platform, holding the handle with their hands with their elbows extended, their knees flexed 45° and the hips flexed until their index fingers were at the height of the kneecaps. The next position was the same except the knees were completely extended (Figure 3)⁴⁴.

The same assessment sequence was used for all



Figure 3. Lumbo-pelvic strength assessment.

participants to avoid a possible positive effect of the ROM and strength over the sensory responses.

Variables

Primary variables

Pain intensity

The self-reported pain intensity in the lumbar area was assessed using the numerical pain scale. In this scale, a score of 0 indicates “no pain”, and a score of 10 indicates “the maximum pain intensity possible”⁴⁵. It has been shown to have good validity ($r=0.94$, $P<.001$).

Range of motion in flexion

The ROMF was assessed with a digital inclinometer based on the iHandy mobile app, which has shown good intra-rater and inter-rater reliability with ICC 0.88 (0.75-0.94)⁴².

Lumbar extensor strength

The lumbar region strength was measured using a foot dynamometer (Takei TM 5420, Takei Scientific Instruments Co. Niigata, Japan), which is a valid test for measuring the

muscle strength of the lumbar region and has shown good reliability in both women (ICC=0.92; $p<.001$) and men (ICC=0.93; $p<.001$)^{44,46}.

Secondary variables

Pressure pain detection threshold

For the PPT evaluation, an algometer was employed to reveal the mechanical hyperalgesia presented by the participants^{40,41}. Our study used a digital algometer (Fx.25 Force Gage, Wagner Instruments, Greenwich, USA), scientifically validated as an instrument for measuring the PPT⁴⁷. The procedure used has shown excellent reliability for low back (ICC 0.86 to 0.99) and moderate to excellent reliability for tibia (ICC 0.53–0.90). The evaluator took 3 measurements, and the mean was employed in the data analysis^{48,49}.

Low back pain disability

We used the validated Spanish version of the Roland-Morris Disability Questionnaire (RMDQ) to assess the physical disability in daily life activities as a consequence of LBP, a questionnaire presented an internal consistency (Cronbach's alpha) of 0.84 to 0.93 and test-retest reliability ranging between 0.72 and 0.91³⁶.

Self-efficacy when dealing with chronic pain

The self-efficacy level was evaluated using the Self-efficacy when Dealing with Chronic Pain Questionnaire (CPSS), which has acceptable psychometric properties for assessing perceived self-efficacy and the ability to cope with the consequences of chronic pain (Cronbach α , 0.91)⁵⁰. This scale is a 19-item self-administered instrument with three domains that assesses Self-Efficacy for Pain Management, Physical Functioning, and Coping with Symptoms, with higher scores indicating greater self-efficacy for managing pain⁵⁰. The CPSS presented a reliability of 0.88, 0.87, and 0.90 for the Pain Management subscale, Physical Functioning subscale, and Coping with Symptoms subscale, respectively⁵¹.

Pain catastrophism

To measure the catastrophism level when faced with painful experiences, we employed the Spanish version of the Pain Catastrophizing Scale, which is a reliable and validated measuring tool (Cronbach α , 0.79; ICC, 0.84). This scale is divided into three domains: rumination, magnification and hopelessness⁵².

Fear of movement

Using the Tampa Kinesiophobia Scale (TSK-11), validated in Spanish by Gómez-Pérez et al. who demonstrated its reliability (Cronbach α , 0.79; ICC>0.7), we assessed the fear of pain and movement⁵³. The questionnaire consists of 2 subscales, one related to the fear of physical activity and the other related to the fear of injury.

Table 1. Descriptive statistics of demographic data.

	Low level of disability (n=30)	High level of disability (n=30)	Asymptomatic group (n=30)	P value, One-way analysis of variance ANOVA or χ^2 test
Age ^a	49.76 ± 11.90	45.80 ± 11.84	40.20 ± 12.51	.011*
Sex ^b				
Female	22 (74.2)	22 (74.2)	18 (61.3)	.412
Male	8 (25.8)	8 (25.8)	12 (38.7)	
Height (cm) ^a	1.60 ± .09	1.62 ± .08	1.78 ± .53	.081
Weight (kg) ^a	66.40 ± 12.99	72.73 ± 19.84	65.73 ± 15.54	.223
EDUCATIONAL LEVEL ^b				
- No education	0 (-)	3 (10.0)	0 (-)	<.001**
- Obligatory education	17 (56.7)	12 (40.0)	0 (-)	
- High School/FP	10 (33.3)	14 (46.7)	8 (26.7)	
- University education	3 (10.0)	1 (3.3)	22 (73.3)	
MARITAL STATUS ^b				
- Single	4 (13.3)	6 (20.0)	14 (46.7)	.04*
- Married-partnered	21 (70.0)	23 (76.7)	16 (53.3)	
- Divorced/separated	5 (16.7)	1 (3.3)	0 (-)	

*Values presented in mean ± standard deviation, median and interquartile range or number (%); *P<.05; ** P<.01; ^a One-way analysis of variance ANOVA; ^b frequency statistics. Cm (centimeters), kg (kilograms).*

Depression and anxiety

The assessment of the level of depression and anxiety was performed using the Hospital Anxiety and Depression Scale (HADS) validated in the Spanish population^{54,55}. The scale consists of 14 issues divided among anxiety and depression. The HADS presented an internal consistency (Cronbach's alpha) at 0.80 to 0.93 for the anxiety, and 0.81 to 0.90 for the depression subscales⁵⁵.

Sample Size calculation

A pilot study was conducted to determine the effect size of three variables (self-efficacy, pressure pain threshold, range of motion) among patients with minor and major disability NCLBP and asymptomatic subjects. The pilot study included 7 participants from each group and obtained an effect size *f* (Cohen's *f* statistic)⁵⁶. The sample size was estimated with G*Power 3.1.7 for Windows (G*Power from the University of Düsseldorf, Germany)⁵⁷. We chose to use a one-way ANOVA test to detect differences between groups for the self-efficacy variable, which was the only one in which statistically significant differences were obtained. In addition, we used an alpha error level of 0.05, a statistical power of 80% (1- β error) and an effect size *f* of 0.335. A total sample size of 90 participants (30 patients with NCLBP and major disability, 30 patients with NCLBP and minor disability, and 30 asymptomatic subjects) was estimated to ensure reliability.

Statistical Analysis

All data analyses were performed SPSS statistical package for social sciences, version 27.0 (SPSS Inc.,

Chicago, IL). The Kolmogorov-Smirnov test was performed and all variables were found to be normally distributed. The statistical analyses were conducted at a 95% confidence level and a *P* value less than 0.05 was considered statistically significant. Results are expressed as mean, standard deviation (SD), with 95% confidence intervals (95% CI). For comparison of the pain intensity between the two patients groups, a Student's *t*-test for independent samples was used. Effect sizes (Cohen's *d*) were calculated for outcome variables. According to Cohen's method, the magnitude of the effect was classified as small (0.20 to 0.49), medium (0.50 to 0.79), or large (≥ 0.8)⁵⁸. One-way ANOVA was used to analyze the group factor for sensorimotor and psychological variables. Significant ANOVA findings were followed up with post hoc test using the Bonferroni correction. The relationship between sensorimotor and psychological variables was examined using Pearson correlation coefficients⁵⁹.

Results

Descriptive data

The study had a total sample of 90 participants, with 62 women and 28 men. The sample included 60 patients with NCLBP, divided into 2 groups depending on the degree of lumbar disability, as well as 30 participants. The results of this study demonstrate statistically significant differences in terms of age ($F=4.73$; $P=.011$) and between the groups for the variables of educational level ($P<.001$) and marital status ($P=.04$) (Table 1).

Table 2. Descriptive statistics of the multiple comparisons in the sensorimotor variables.

	Low level of disability (n=30)	High level of disability (n=30)	Asymptomatic group (n=30)	Difference of means (95% CI); Effect size (d) a) Low level of disability vs High level of disability b) Low level of disability vs Asymptomatic group c) High level of disability vs Asymptomatic group
Pain intensity ^b	6.52 ± 1.73	7.82 ± 1.40	-	-1.30 (-2.23 to -.36)*; d= -.83
SLE-S ^a	42.01 ± 24.38	38.98 ± 21.38	67.68 ± 27.28	a) 3.03 (-13.27 to 19.34); d= .13 b) -25.66 (-41.21 to -10.11)**; d= .99 c) -28.69 (-45 to -12.38)**; d= -1.17
SLE-MS ^a	46.76 ± 26.14	37.90 ± 19.03	72.87 ± 31.69	a) 8.85 (-8.83 to 26.55); d= .38 b) -26.11 (-42.99 to -9.22)*; d= -.89 c) -34.96 (-52.52 to -17.41)**; d= -1.33
PPDT lumbar ^a	2.85 ± 2.19	2.05 ± 1.46	6.63 ± 3.85	a) .80(-.89 to 2.50); d= .42 b) -3.78(-5.48 to -2.08)**; d= -1.20 c) -4.58(-6.28 to -2.88)**; d= -1.57
PPDT shin ^a	2.96 ± 2.60	2.62 ± 1.66	7.60 ± 3.17	a) .34(-1.27 to 1.95); d= .15 b) -4.64(-6.25 to -3.03)**; d= -1.60 c) -4.98(-6.60 to -3.37)**; d= -1.96
ROMF ^a	31.42 ± 11.07	25.93 ± 15.29	39.41 ± 11.23	a) 5.48(-2.20 to 13.48); d= .41 b) -7.98(-15.98 to .007); d= -.71 c) -13.47(-21.47 to -5.48)**; d= -1.00

*SLE S: Standing Lumbar Extensor Strength; SLE MS: Mid-Seated Lumbar Extensor Strength; PPDT: Pressure Pain Detection Threshold; ROMF: Range of Motion in Flexion. *p<.05, **p<.001. ^a One-way analysis of variance ANOVA; ^b Student's t-test.*

Table 3. Descriptive statistics of multiple comparisons in psychological variables.

	Low level of disability (n=30)	High level of disability (n=30)	Asymptomatic group (n=30)	Difference of means (95% CI); Effect size (d) a) Low level of disability vs High level of disability b) Low level of disability vs Asymptomatic group c) High level of disability vs Asymptomatic group
Disability	4.73 ± 1.94	12.46 ± 3.76	.20 ± .61	a) -7.73 (-9.29 to -6.17)**; d= -2.58 b) 4.53 (2.97 to 6.09)**; d= 3.21 c) 12.26 (10.70 to 13.82)**; d= 4.55
Pain Catastrophism	18.20 ± 9.76	24.96 ± 11.24	10.46 ± 7.96	a) -6.76 (-12.91 to -.62)*; d= -.64 b) 7.73 (1.58 to 13.87)*; d= .89 c) 14.50 (8.35 to 20.64)**; d= 1.58
Fear of movement	25.73 ± 5.33	31.16 ± 6.00	21.46 ± 4.65	a) -5.43 (-8.81 to -2.05)*; d= -.95 b) 4.26 (.88 to 7.64)*; d= .85 c) 9.70 (6.32 to 13.07)**; d= 1.80
Self-efficacy	145.60 ± 27.45	117.70 ± 27.74	157.00 ± 17.02	a) 27.90 (12.40 to 43.39)**; d= 1.01 b) -11.40 (-26.89 to 4.09); d= -.55 c) -39.30 (-54.79 to -23.80)**; d= -1.70
Anxiety	7.50 ± 3.67	9.16 ± 3.78	4.76 ± 2.82	a) -1.66 (-3.84 to .51); d= -.44 b) 2.73(.55 to 4.91)*; d= .83 c) 4.40(2.22 to 6.57)**; d= 1.31
Depression	5.80 ± 3.46	6.63 ± 3.27	1.73 ± 1.55	a) -.83(-2.65 to .99); d= -.24 b) 4.06(2.24 to 5.89)**; d= 1.51 c) 4.90(3.07 to 6.72)**; d= 1.91

**p<.05, **p<.001.*

Table 4. Correlation analysis examining the bivariate relationships between the psychological and sensorimotor variables.

		Pain Catastrophism	Fear of movement	Self-efficacy	Anxiety	Depression
Pain intensity	Low level of disability	.666**	.311	.064	.147	.029
	High level of disability	.296	.113	-.248	.233	.080
SLE-S	Low level of disability	-.131	-.127	.177	.202	-.131
	High level of disability	-.066	.181	.559**	.049	.214
SLE-MS	Low level of disability	-.107	-.099	.037	.348	-.085
	High level of disability	-.057	.188	.534**	.030	.287
PPDT LUMBAR	Low level of disability	-.137	.152	.315	-.142	-.377*
	High level of disability	-.294	.087	.153	-.093	-.017
PPDT SHIN	Low level of disability	-.050	.079	.318	.043	-.274
	High level of disability	-.142	-.090	.320	.046	-.191
ROMF	Low level of disability	-.035	.480**	.219	.059	.126
	High level of disability	-.052	-.045	.159	-.037	-.066

*SLE S: Standing Lumbar Extensor Strength; SLE MS: Mid-Seated Lumbar Extensor Strength; PPDT: Pressure Pain Detection Threshold; ROMF: Range of Motion in Flexion. *p<.05, **p<.001.*

Multiple intergroup comparisons of the sensorimotor variables

There were no statistically significant differences between the two symptomatic groups for any sensorimotor variable except for pain intensity, which was greater in the group with NCLBP with major lumbar disability ($t=-2.81$; $P=.007$; $d=-.83$). (Table 2).

Multiple intergroup comparisons of the psychological variables

For the psychological variables, our study results demonstrated statistically significant differences only between the symptomatic groups for the self-efficacy level ($F=20.29$; $P<.001$), pain catastrophism ($F=16.61$; $P=.026$) and fear of movement ($F=24.68$; $P<.001$), with the NCLBP group with major disability levels showing lower scores on self-efficacy and higher scores on catastrophizing and fear of movement (Table 3).

Correlation analysis

Table 4 shows the correlation analysis that examined the possible relationship between the psychological and sensorimotor variables, taking into account the disability. In the greater disability group, the moderate correlation was between the lumbopelvic strength and the self-efficacy level ($r=.559$, $P<.001$). For the group with less disability, there was a correlation between ROMF and the fear of movement ($r=.480$, $P<.0001$).

Discussion

The study's main objective was to investigate the influence of the degree of lumbar disability on sensorimotor variables in patients with NCLBP. Our study results indicate that the patients with NCLBP had significantly less lumbopelvic strength, significantly lower PPT and lower ROMF than the asymptomatic participants. Between the two symptomatic groups, however, there were differences only in pain intensity.

These findings are in line with those of previous research, such as the study by Imamura et al. that demonstrated that patients with NCLBP presented significantly lower PPTs than asymptomatic participants; however, the authors did not segment the sample according to disability¹⁰. Although we might think that disability should be related to somatosensory variables, the available evidence indicates that this relationship does not necessarily exist⁶⁰⁻⁶². A meta-analysis showed that the strength of correlation between PPTs and pain intensity and disability was low in patients with CLBP and chronic neck pain; in fact, pain threshold measures explained approximately 2% of the variance in pain or disability⁶³. In 2005, a study conducted in the same population, segmented on the basis of the Oswestry lumbar disability scale, showed that there were no differences in PPT between those patients with more disability and those with less disability⁶⁴. A recent study showed that the clinical improvement of patients with NCLBP did not depend on the improvement of somatosensory variables but on the perceived disability and pain intensity, which would explain why there were no significant differences in our study in the PPTs between the symptomatic groups⁶⁵. We hypothesise

that perceived disability is a cognitive construct involving psychological and psychosocial variables and might explain why, regardless of the degree of disability, there were no significant differences for the somatosensory variables.

Another important finding in our study is the correlation established between strength and self-efficacy in the patients with high perceived disability. It is important to note that self-efficacy is defined as the ability for a participant to have to perform an action or behaviour in an optimal manner; therefore, the self-efficacy variable might be more clearly associated with motor variables⁶⁶. In line with these results, other research studies on patients with NCLBP in which the sample was segmented based on other psychological variables have found significant differences in sensorimotor variables. La Touche et al. showed that patients with NCLBP who present a lower level of self-efficacy in turn show a moderate negative correlation between ROMF and lumbar strength on one hand and the degree of lumbar disability on the other³⁸. By contrast, Nieto-García et al. found no significant differences between patients with NCLBP and asymptomatic participants for any functional variable such as those analysed in the present study. Those findings could be due to the fact that Nieto-García's study compared patients with NCLBP who presented with high levels of physical activity and a high perception of self-efficacy⁶⁷.

The patients' physical activity level might be of great importance, as previous studies have indicated; in fact, in a recent study, a therapeutic exercise intervention showed an improvement in disability and self-efficacy in addition to the expected improvement in motor variables in patients with CLBP⁶⁸. Similarly, another study found strong correlations between disability and lumbar strength and self-efficacy²⁶. In contrast, a recent study, demonstrated no correlation between low back disability and motor variables such as strength and ROM but found a correlation with pain intensity, considering that the sample of patients with NCLBP was not segmented according to the degree of disability⁶⁹. Another research study observed a correlation between disability and pain intensity, but the authors also indicated no correlation between disability and functional variables⁷⁰. Those previous results would also explain why our results did not show significant differences in motor variables based on the degree of disability.

It is important to consider that the differences in age and educational level might influence these results. Previous studies have found that age and educational level are risk factors for LBP⁷¹⁻⁷³. In particular, age might correlate with perceived disability but not so directly with pain intensity, and age has been associated with a higher demand for health services for LBP^{74,75}. Studies have related educational level to the available coping skills, which in turn might be indirectly related to the degree of self-efficacy⁷⁶⁻⁷⁹. It has been observed that in patients with chronic back pain, the presence of greater fear of movement is associated with lower educational levels and higher levels of disability, which might be in line with our results⁸⁰. Likewise, a cohort study identified that patients

with CLBP and a less favourable prognosis of recovery had associated high disability, high pain intensity and lower educational level⁸¹.

Other authors have suggested that the segmentation of the sample by other psychological variables might lead to significant differences in sensorimotor variables. Sullivan et al. segmented the sample based on the level of catastrophizing, level of fear of movement and the degree of depression, thereby finding differences in the temporal summation of mechanical stimuli in the patients with NCLBP³⁷. Christie et al. showed that higher levels of pain-related fear, catastrophizing and depression were significantly associated with reduced ROM⁸².

Regarding the study's secondary objective, our results indicate that there were statistically significant differences between the patients with NCLBP for all the variables except for anxiety and depression. Accordingly, there were significant differences only between the symptomatic and asymptomatic groups. Studies such as those mentioned earlier (e.g., La Touche et al.) have shown that NCLBP and a lower degree of self-efficacy have a greater influence on psychological variables and a greater level of disability³⁸. Similarly, the aforementioned study by Nieto-García et al. found significant differences between asymptomatic groups and patients with NCLBP in whom, in line with our results, the levels of catastrophism and fear of movement were significantly higher in the individuals with NCLBP⁶⁷. Moreover, Bair et al. indicated that pain intensity had a considerable correlation with psychosocial factors, highlighting among them anxiety, depression and catastrophism⁸³, factors that can be determinants when the degree of disability is major or minor^{84,85}. Another study obtained similar results, observing a significant relationship between disability and depressive symptoms and higher levels of fear when faced with pain³⁰.

We can therefore state that disability is a variable of considerable relevance for patients with NCLBP, so much so that recent studies have concluded that disability is a predictor of fear when faced with pain and the difficulty when performing motor activities⁸⁶. The literature also supports the contention that disability has a considerable influence on self-efficacy beliefs³⁰, which can directly influence motor planning⁶⁶.

Lastly, we should point out that there is a lack of evidence regarding the analysis of sensorimotor and psychological variables addressing disability. We have found only one study similar to ours in which segmentation of the sample was performed; however, a different tool was used to classify the patients; in that case, the Oswestry lumbar disability questionnaire⁶⁴. The segmentation performed in the present study was based on the median of the result of disability quantified with the Roland Morris questionnaire, a method that has been employed in previous studies and has demonstrated to be a valid tool. In our opinion, the Roland Morris questionnaire is an interesting and widely used tool^{37,38}.

Clinical implications

Based on our results, we believe that it is clinically relevant to analyse the degree of disability of patients with NCLBP, given that it might lead to a more exhaustive evaluation of psychological variables that could be involved in the pain experience and chronicity³⁴. In addition to the importance of analysing and identifying these variables, it can also help physiotherapists propose new lines of treatment to affect these psychological variables, such as therapeutic education and the prescription of exercise and other strategies from a cognitive-behavioural perspective^{87,88}.

Limitations

This study presents important limitations that need to be considered. First, our results showed statistically significant differences in age between the groups which may have influenced the results. Scientific evidence indicates that it can be expected a positive correlation between perceived disability and age, and in young patients the disability is associated with greater pain intensity and less associated among elderly patients^{74,75}. In our results the group with the highest degree of perceived disability had the lowest mean age (and greater intensity). Another limitation is the difference in educational levels between the groups, because the literature reflects a relationship between higher lumbar disability levels and lower educational levels⁸⁹. Lastly, an important limitation is the lack of assessment of physical activity, given that it has been shown to be a determinant for the degree of lumbar disability³¹.

It is also important to point out that in this study we have divided the sample based on disability but making the subdivision according to the median statistic, this could be a limitation taking into account that there are possibly more levels of low back disability that could influence differently on the sensorimotor and psychological variables.

Conclusion

In conclusion, the results of this study suggest statistically significant differences based on lumbar disability in patients with NCLBP in pain intensity but not for the rest of the sensorimotor variables. Moreover, we have shown that those patients with NCLBP and major levels of lumbar disability showed significantly lower levels of self-efficacy, increased pain catastrophism and increased fear of movement compared with the symptomatic group with minor levels of lumbar disability.

Ethics approval

The study followed the principles of the Declaration of Helsinki, and the Ethics Committee of University La Salle approved the study (CSEULS-PI-126/2016).

References

1. Rubin DI. Epidemiology and Risk Factors for Spine Pain. *Neurol Clin* 2007;25(2):353-371.
2. Hoy, Bain C, Williams G, et al. A systematic review of the global prevalence of low back pain. *Arthritis Rheum* 2012;64(6):2028-2037.
3. Luo X, Pietrobon R, Sun SX, Liu GG, Hey L. Estimates and Patterns of Direct Health Care Expenditures Among Individuals With Back Pain in the United States. *Spine (Phila Pa 1976)* 2003;29(1):79-86.
4. Maher C. Effective physical treatment for chronic low back pain. *Orthopedic Clinics of North America* 2004;35(1):57-64.
5. Airaksinen O, Brox JI, Cedraschi C, et al. Chapter 4 European guidelines for the management of chronic nonspecific low back pain. In: *European Spine Journal* Vol 15;2006:192-300.
6. Balagué F, Mannion AF, Pellisé F, Cedraschi C. Non-specific low back pain Epidemiology and natural history. *The Lancet* 2012;379:482-491.
7. Chou R, Qaseem A, Snow V, et al. Diagnosis and Treatment of Low Back Pain: A Joint Clinical Practice Guideline from the American College of Physicians and the American Pain Society. *American College of Physicians* 2007;147(7):478-491.
8. Koes BW, van Tulder MW, Thomas S. Diagnosis and treatment of low back pain. *Br Med J* 2006; 332(7555):1430-1434.
9. Hashmi JA, Baliki MN, Huang L, et al. Shape shifting pain: Chronification of back pain shifts brain representation from nociceptive to emotional circuits. *Brain* 2013;136(9):2751-2768.
10. Imamura M, Chen J, Reiko Matsubayashi S, Marcon Alfieri F, Kamura Bueno D, Tu Hsing W. Changes in Pressure Pain Threshold in Patients With Chronic Nonspecific Low Back Pain. *Spine (Phila Pa 1976)* 2013;38(24):2098-2107.
11. Reneman MF, Schiphorts Preuper HR, Kleen M, Geertzen JHB, Dijkstra PU. Are pain intensity and pain related fear related to functional capacity evaluation performances of patients with chronic low back pain? *J Occup Rehabil* 2007;17(2):247-258.
12. O'Keefe M, Purtill H, Kennedy N, et al. Individualised cognitive functional therapy compared with a combined exercise and pain aeducation class for patients with non-specific chronic low back pain: study protocol for a multicentre randomised controlled trial. *BMJ Open* 2015;5(6):1-10.
13. Ramond-Roquin A, Bouton C, Bègue C, Petit A, Roquelaure Y, Huez JF. Psychosocial risk factors, interventions, and comorbidity in patients with non-specific low back pain in primary care: Need for comprehensive and patient-centered care. *Front Med (Lausanne)* 2015;2(OCT).
14. Kregel J, Meeus M, Malfliet A, et al. Structural and functional brain abnormalities in chronic low back pain: A systematic review. *Semin Arthritis Rheum* 2015;45(2):229-237.
15. Sin Ki N, Urquhart DM, Fitzgerald PB, Cicuttini FM, Hussain SM, Fitzgibbon BM. The Relationship between

- Structural and Functional Brain Changes and Altered Emotion and Cognition in Chronic Low Back Pain. *Clinical Journal of Pain* 2018;34(3):237-261.
16. den Bandt HL, Ickmans K, Leemans L, Nijs J, Voogt L. Differences in Quantitative Sensory Testing Outcomes Between Patients With Low Back Pain in Primary Care and Pain-free Controls. *Clin J Pain* 2022;38(6).
 17. Moriki K, Tushima E, Ogihara H, Endo R, Sato T, Ikemoto Y. Combined effects of lifestyle and psychosocial factors on central sensitization in patients with chronic low back pain: A cross-sectional study. *Journal of Orthopaedic Science*. Published online August 14, 2021.
 18. Echeita JA, Preuper HRS, Dekker R, et al. Protocol: Central Sensitisation and functioning in patients with chronic low back pain: protocol for a cross-sectional and cohort study. *BMJ Open*. 2020;10(3):31592.
 19. Shigetoh H, Abiko T, Ohyama M, Sakata E, Murata S. Associations of Central Sensitization-Related Symptoms with Low Back Pain-Related Factors and Work Status in Caregivers. *Int J Environ Res Public Health* 2022;19(16):10135.
 20. Giesecke T, Gracely RH, Grant MAB, et al. Evidence of Augmented Central Pain Processing in Idiopathic Chronic Low Back Pain. *Arthritis Rheum* 2004;50(2):613-623.
 21. O'Neill S, Manniche C, Graven-Nielsen T, Arendt-Nielsen L. Generalized deep-tissue hyperalgesia in patients with chronic low-back pain. *European Journal of Pain* 2007;11(4):415-420.
 22. Chou, Shekelle P. Will This Patient Develop Persistent Disabling Low Back Pain? *Journal of the American Medical Association* 2010;303(13):1295-1302.
 23. Hoy D, March L, Woolf A, et al. The global burden of neck pain: Estimates from the global burden of disease 2010 study. *Ann Rheum Dis* 2014;73(7):1309-1315.
 24. Vos T, Abajobir AA, Abate KH, et al. Global, regional, and national incidence, prevalence, and years lived with disability for 328 diseases and injuries for 195 countries, 1990–2016: a systematic analysis for the Global Burden of Disease Study 2016. *The Lancet* 2017;390(10100):1211-1259.
 25. Buchbinder R, van Tulder M, Öberg B, et al. Low back pain: a call for action. *The Lancet* 2018;391(10137):2384-2388.
 26. la Touche R, Pérez-Fernández M, Barrera-Marchessi I, et al. Psychological and physical factors related to disability in chronic low back pain. *J Back Musculoskelet Rehabil* 2019;32(4):603-611.
 27. Williams JS, Ng N, Peltzer K, et al. Risk factors and disability associated with low back pain in older adults in low- and middle-income countries. Results from the WHO study on global AGEing and adult health (SAGE). *PLoS One* 2015;10(6).
 28. Woby SR, Roach NK, Urmston M, Watson PJ. Psychometric properties of the TSK-11: A shortened version of the Tampa Scale for Kinesiophobia. *Pain* 2005;117(1-2):137-144.
 29. Swinkels-Meewisse IEJ, Roelofs J, Oostendorp RAB, Verbeek ALM, Vlaeyen JWS. Acute low back pain: Pain-related fear and pain catastrophizing influence physical performance and perceived disability. *Pain* 2006;120(1-2):36-43.
 30. Salvetti M de G, Pimenta C de M, Braga PE, Correa CF. Disability related to chronic low back pain: prevalence and associated factors. *Rev Esc Enferm USP* 2012;46:16-23.
 31. Teichtahl AJ, Urquhart DM, Wang Y, et al. Physical inactivity is associated with narrower lumbar intervertebral discs, high fat content of paraspinal muscles and low back pain and disability. *Arthritis Res Ther* 2015;17(1).
 32. Luque-Suarez A, Martinez-Calderon J, Falla D. Role of kinesiophobia on pain, disability and quality of life in people suffering from chronic musculoskeletal pain: a systematic review. *Br J Sports Med* 2019;53(9):554-559.
 33. Woolf AD, Pfleger B. Burden of major musculoskeletal conditions. *Bulletin of the World Organization* 2003;81(9):646-656.
 34. Otero-Ketterer E, Peñacoba-Puente C, Ferreira Pinheiro-Araujo C, Valera-Calero JA, Ortega-Santiago R. Biopsychosocial Factors for Chronicity in Individuals with Non-Specific Low Back Pain: An Umbrella Review. *Int J Environ Res Public Health* 2022;19(16):10145.
 35. von Elm E, Altman DG, Egger M, Pocock SJ, Gøtzsche PC, Vandenbroucke JP. The Strengthening the Reporting of Observational Studies in Epidemiology (STROBE) statement: guidelines for reporting observational studies. *J Clin Epidemiol* 2008;61(4):344-349.
 36. Kovacs F, J Llobera, MT Gil del Real, v Abaira, M Gestoso, C Fernández . Validation of the Spanish Version of the Roland-Morris Questionnaire. *Spine (Phila Pa 1976)* 2002;27(5):538-542.
 37. Sullivan MJL, Thibault P, Andrikonyte J, Butler H, Catchlove R, Larivière C. Psychological influences on repetition-induced summation of activity-related pain in patients with chronic low back pain. *Pain* 2009;141(1-2):70-78.
 38. la Touche R, Grande-Alonso M, Arnés-Prieto P, Paris-Alemán A. Cross-Sectional Study How Does Self-Efficacy Influence Pain Perception, Postural Stability and Range of Motion in Individuals with Chronic Low Back Pain? *Pain Physician* 2019;22(1):1-13.
 39. Savigny P, Watson P, Underwood M. Early management of persistent non-specific low back pain: summary of NICE guidance. *BMJ* 2009;338(7708):1441-1442.
 40. Aboodarda S, Spence A, Button DC. Pain pressure threshold of a muscle tender spot increases following local and non-local rolling massage. *BMC Musculoskelet Disord* 2015;16(1):265.
 41. Finocchietti S, Graven-Nielsen T, Arendt-Nielsen L. Dynamic mechanical assessment of muscle hyperalgesia in humans: The dynamic algometer. *Pain Res Manag* 2015;20(1):29-34.
 42. Kolber MJ, Mdt C, Pizzini M, Robinson A, Yanez D,

- Hanney WJ. The reliability and concurrent validity of measurements used to quantify lumbar spine mobility: an analysis of an iPhone® application and gravity based inclinometry. *The International Journal of Sports Physical Therapy* | 2013;8(2):130.
43. Bedekar N, Suryawanshi M, Rairikar S, Sancheti P, Shyam A. Inter and intra-rater reliability of mobile device goniometer in measuring lumbar flexion range of motion. *J Back Musculoskeletal Rehabil* 2014; 27(2):161-166.
 44. Coldwells A, Atkinson G, Reilly T. Sources of variation in back and leg dynamometry. *Ergonomics* 1994; 37(1):79-86.
 45. Sendlbeck M, Araujo EG, Schett G, Englbrecht M. Psychometric properties of three single-item pain scales in patients with rheumatoid arthritis seen during routine clinical care: a comparative perspective on construct validity, reproducibility and internal responsiveness. *RMD Open* 2015;1(1):e000140.
 46. ten Hoor GA, Musch K, Meijer K, Plasqui G. Test-retest reproducibility and validity of the back-leg-chest strength measurements. *Isokinet Exerc Sci* 2016;24(3):209-216.
 47. Chesterton LS, Sim J, Wright CC, Foster NE. Interrater Reliability of Algometry in Measuring Pressure Pain Thresholds in Healthy Humans, Using Multiple Raters. *Clin J Pain*. 2007;23(9):760-766.
 48. Aweid O, Gallie R, Morrissey D, et al. Medial tibial pain pressure threshold algometry in runners. *Knee Surgery, Sports Traumatology, Arthroscopy* 2013; 22(7):1549-1555.
 49. Balaguier R, Madeleine P, Vuillerme N. Is One Trial Sufficient to Obtain Excellent Pressure Pain Threshold Reliability in the Low Back of Asymptomatic Individuals? A Test-Retest Study. *PLoS One* 2016;11(8):e0160866.
 50. Martín-Aragón GM, Pastor Mira M de los A, Rodríguez Martín J, et al. Percepción de autoeficacia en dolor crónico: adaptación y validación de la Chronic Pain Self-Efficacy Scale. *Revista de Psicología de la Salud* 1999;11:53-75.
 51. Anderson KO, Dowds BN, Pelletz RE, Thomas Edwards W, Peeters-Asdourian C. Development and initial validation of a scale to measure self-efficacy beliefs in patients with chronic pain. *Pain* 1995;3:77-84.
 52. García-Campayo J, Rodero B, Alda M, Sobradie N, Montero J, Moreno S. Validación de la versión española de la escala de la catastrofización ante el dolor (Pain Catastrophizing Scale) en la fibromialgia. *Med Clin (Barc)* 2008;131(13):487-492.
 53. Gómez-Pérez L, López-Martínez AE, Ruiz-Párraga GT. Psychometric properties of the Spanish version of the Tampa Scale for Kinesiophobia (TSK). *Journal of Pain* 2011;12(4):425-435.
 54. Herrero MJ, Blanch J, Peri JM, de Pablo J, Pintor L, Bulbena A. A validation study of the hospital anxiety and depression scale (HADS) in a Spanish population. *Gen Hosp Psychiatry* 2003;25(4):277-283.
 55. Herrmann C. Review international experiences with the hospital anxiety and depression scale- A review of validation data and clinical results. *J Psychosom Res* 1997;42:17-41.
 56. Salkind N. *Encyclopedia of Research Design*. In: *Encyclopedia of Research Design*. SAGE Publications, Inc.; 2012.
 57. Faul F, Erdfelder E, Lang AG, Buchner A. G*Power 3: a flexible statistical power analysis program for the social, behavioral, and biomedical sciences. *Behav Res Methods* 2007;39(2):175-191.
 58. Cohen J. *Statistical Power Analysis for the Behavioral Sciences Second Edition*.; 1988.
 59. Hinkle DE, Wiersma W, Jurs SG. *Applied Statistics for the Behavioral Sciences*.; 1988.
 60. Fernandes C, Pidal-Miranda M, Samartin-Veiga N, Carrillo-De-La-Peña MT. Conditioned pain modulation as a biomarker of chronic pain: A systematic review of its concurrent validity. *Pain* 2019;160(12):2679-2690.
 61. Vaegter HB, Graven-Nielsen T. Pain modulatory phenotypes differentiate subgroups with different clinical and experimental pain sensitivity. *Pain* 2016;157(7):1480-1488.
 62. Rabey M, Kendell M, Koren S, et al. Do chronic low back pain subgroups derived from dynamic quantitative sensory testing exhibit differing multidimensional profiles? *Scand J Pain* 2021;21(3):474-484.
 63. Hübscher M, Moloney N, Leaver A, Rebbeck T, McAuley JH, Refshauge KM. Relationship between quantitative sensory testing and pain or disability in people with spinal pain - A systematic review and meta-analysis. *Pain* 2013;154(9):1497-1504.
 64. Farasyn A, Meeusen R. The influence of non-specific low back pain on pressure pain thresholds and disability. *European Journal of Pain* 2005;9(4):375-375.
 65. Palsson TS, Christensen SWM, de Martino E, Graven-Nielsen T. Pain and Disability in Low Back Pain Can be Reduced despite No Significant Improvements in Mechanistic Pain Biomarkers. *Clinical Journal of Pain* 2021;37(5):330-338.
 66. Bandura A. *Self-Efficacy: Toward a Unifying Theory of Behavioral Change*. Vol 84.; 1977.
 67. Nieto-García J, Suso-Martí L, la Touche R, Grande-Alonso M. Somatosensory and motor differences between physically active patients with chronic low back pain and asymptomatic individuals. *Medicina (Lithuania)* 2019;55(9).
 68. Shinohara Y, Wakaizumi K, Ishikawa A, et al. Improvement in Disability Mediates the Effect of Self-Efficacy on Pain Relief in Chronic Low Back Pain Patients with Exercise Therapy. *Pain Res Manag* 2022;2022:1-8.
 69. Shin DC. Correlation between non-specific chronic low back pain and physical factors of lumbar and hip joint in office workers. *Med Hypotheses* 2020;144.
 70. Sakulsriprasert P, Vachalathiti R, Kingcha P. Association among pain, disability, and functional capacity in patients with chronic non-specific low back pain: A

- cross-sectional study. *J Back Musculoskelet Rehabil* 2021;34(1):149-157.
71. Buruck G, Tomaschek A, Wendsche J, Ochsmann E, Dörfel D. Psychosocial areas of worklife and chronic low back pain: A systematic review and meta-analysis. *BMC Musculoskelet Disord* 2019;20(1):1-16.
72. Dionne CE, Dunn KM, Croft PR. Does back pain prevalence really decrease with increasing age? A systematic review. *Age Ageing* 2006;35(3):229-234.
73. Dionne CE, von Korff M, Koepsell TD, Deyo RA, Barlow WE, Checkoway H. Formal education and back pain: a review. *J Epidemiol Community Health* (1978) 2001;55(7):455.
74. Wettstein M, Eich W, Bieber C, Tesarz J. Pain Intensity, Disability, and Quality of Life in Patients with Chronic Low Back Pain: Does Age Matter? *Pain Medicine: The Official Journal of the American Academy of Pain Medicine* 2019;20(3):464.
75. Houde F, Cabana F, Léonard G. Does age affect the relationship between pain and disability? A descriptive study in individuals suffering from chronic low back pain. *Journal of Geriatric Physical Therapy* 2016; 39(3):140-145.
76. Weber A, Zimmermann-Stenzel M, Moradi B, Neubauer E, Schiltewolf M. Awareness of the German Population of Common Available Guidelines of How to Cope with Lower Back Pain. *Pain Physician* 2014;17:217-226.
77. Dragano N, Wahrendorf M, Müller K, Lunau T. Work and health inequalities: The unequal distribution of exposures at work in Germany and Europe. *Bundesgesundheitsblatt Gesundheitsforschung Gesundheitsschutz* 2016;59(2):217-227.
78. Kiel S, Sierocinski E, Raus C, Knauth P, Chenot JF. Concordance of Patient Expectations Regarding Guideline Recommendations for Management of Psychosocial Factors in Low Back Pain: A Cross-sectional Study. *Pain Physician* 2022;25:E597-E607.
79. Kanaan SF, Alissa HMK, Jaber AF, Almhdawi KA, Mansour ZM, Alhanada M. Knowledge related to low back pain and its associated factors in patients with low back pain: A cross-sectional study. *J Back Musculoskelet Rehabil*. Published online July 12, 2022:1-9.
80. Bilgin S, Cetin H, Karakaya J, Kose N. Multivariate Analysis of Risk Factors Predisposing to Kinesiophobia in Persons With Chronic Low Back and Neck Pain. *J Manipulative Physiol Ther* 2019;42(8):565-571.
81. Menezes Costa LDC, Maher CG, McAuley JH, et al. Prognosis for patients with chronic low back pain: inception cohort study. *The BMJ* 2009;339(7725):850.
82. Christe G, Crombez G, Edd S, Opsommer E, Jolles BM, Favre J. Relationship between psychological factors and spinal motor behaviour in low back pain: a systematic review and meta-analysis. *Pain* 2021;162(3):672-686.
83. Bair MJ, Wu J, Damush TM, Sutherland JM, Kroenke K. Association of depression and anxiety alone and in combination with chronic musculoskeletal pain in primary care patients. *Psychosom Med* 2008;70(8):890-897.
84. Alamam DM, Leaver A, Alsobayel HI, Moloney N, Lin J, Mackey MG. Low Back Pain-Related Disability Is Associated with Pain-Related Beliefs Across Divergent Non-English-Speaking Populations: Systematic Review and Meta-Analysis. *Pain Med* 2021;22(12):2974-2989.
85. Meyer K, Tschopp A, Sprott H, Mannion AF. Association between catastrophizing and self-rated pain and disability in patients with chronic low back pain. *J Rehabil Med* 2009;41(8):620-625.
86. Pérez-Fernández M, Lerma-Lara S, Ferrer-Peña R, et al. Fear and difficulty perceived when visualizing therapeutic exercise in patients with chronic low back pain: A cross-sectional study. *J Exerc Rehabil* 2015;11(6):345-355.
87. Vibe Fersum K, Smith A, Kvåle A, Skouen JS, O'Sullivan P. Cognitive functional therapy in patients with non-specific chronic low back pain - a randomized controlled trial 3-year follow-up. *European Journal of Pain* 2019;23(8):1416-1424.
88. O'Keeffe M, O'Sullivan P, Purtill H, Bargary N, O'Sullivan K. Cognitive functional therapy compared with a group-based exercise and education intervention for chronic low back pain: a multicentre randomised controlled trial (RCT). *Br J Sports Med* 2020;54(13):782-789.
89. Klijs B, Nusselder WJ, Looman CW, Mackenbach JP. Educational disparities in the burden of disability: Contributions of disease prevalence and disabling impact. *Am J Public Health* 2014;104(8):141-148.