

Acta Crystallographica Section E

Structure Reports

Online

ISSN 1600-5368

1-(Ferrocen-1-ylmethyl)-3-methylimidazol-3-ium iodide

Vincent O. Nyamori, Siphesihle M. Zulu and Bernard Omondi*

 School of Chemistry and Physics, University of KwaZulu-Natal, Westville Campus, Private Bag X54001, Durban 4000, South Africa
 Correspondence e-mail: owaga@ukzn.ac.za

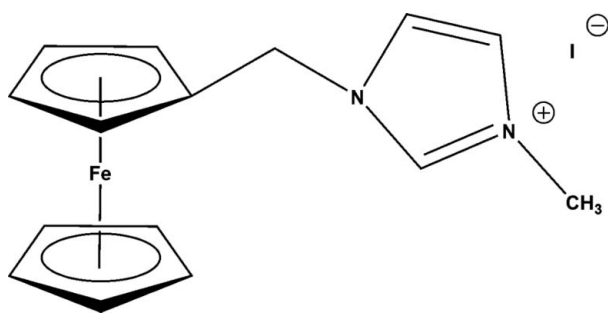
Received 4 October 2012; accepted 2 November 2012

 Key indicators: single-crystal X-ray study; $T = 173$ K; mean $\sigma(\text{C}-\text{C}) = 0.010$ Å; R factor = 0.049; wR factor = 0.134; data-to-parameter ratio = 17.2.

The structure of the title compound, $[\text{Fe}(\text{C}_5\text{H}_5)(\text{C}_{10}\text{H}_{12}\text{N}_2)]\text{I}$, consists of a 1-(ferrocen-1-ylmethyl)-3-methylimidazolium cation which is counter-balanced by an iodide anion. The cyclopentadienyl (Cp) rings of the ferrocene unit have a slightly staggered conformation skewed from an ideal eclipsed conformation by an angle of $3.5(6)^\circ$. The interplanar angle between the Cp and the imidazole ring is $67.94(2)^\circ$.

Related literature

For the synthesis of ferrocenyl alkyl imidazoles, see: Simenel *et al.* (2003); Nyamori & Bala (2008). For the synthesis of ferrocenyl imidazolium salts, see: Nyamori *et al.* (2010, 2012); Bala & Coville (2007). For applications of ferrocenyl imidazolium salts, see: Gao *et al.* (2004); Ornelas (2011); Coleman *et al.* (2005); Taylor & Licence (2012).



Experimental

Crystal data

$[\text{Fe}(\text{C}_5\text{H}_5)(\text{C}_{10}\text{H}_{12}\text{N}_2)]\text{I}$
 $M_r = 408.06$
 Monoclinic, $P2_1/c$
 $a = 7.2745(3)$ Å
 $b = 9.3164(3)$ Å
 $c = 22.2744(9)$ Å
 $\beta = 90.927(3)^\circ$

$V = 1509.39(10)$ Å³
 $Z = 4$
 Cu $K\alpha$ radiation
 $\mu = 23.96$ mm⁻¹
 $T = 173$ K
 $0.16 \times 0.12 \times 0.07$ mm

Data collection

Agilent SuperNova (Dual, Cu at zero, Atlas) diffractometer
 Absorption correction: analytical [*CrysAlis PRO* (Agilent, 2012), based on expressions of Clark &

Reid (1995)]
 $T_{\min} = 0.114$, $T_{\max} = 0.285$
 6978 measured reflections
 2972 independent reflections
 2745 reflections with $I > 2\sigma(I)$
 $R_{\text{int}} = 0.042$

Refinement

$R[F^2 > 2\sigma(F^2)] = 0.049$
 $wR(F^2) = 0.134$
 $S = 1.20$
 2972 reflections

173 parameters
 H-atom parameters constrained
 $\Delta\rho_{\max} = 2.51$ e Å⁻³
 $\Delta\rho_{\min} = -1.53$ e Å⁻³

Data collection: *CrysAlis PRO* (Agilent, 2012); cell refinement: *CrysAlis PRO*; data reduction: *CrysAlis PRO*; program(s) used to solve structure: *SHELXS97* (Sheldrick, 2008); program(s) used to refine structure: *SHELXL97* (Sheldrick, 2008); molecular graphics: *ORTEP-3* (Farrugia, 2012); software used to prepare material for publication: *WinGX* (Farrugia, 2012).

We thank the University of KwaZulu-Natal and the National Research Foundation (NRF) for financial support. We also thank Alex Griffin from Agilent Technology XRD for the data collection and structure solution.

Supplementary data and figures for this paper are available from the IUCr electronic archives (Reference: HG5258).

References

- Agilent (2012). *CrysAlis PRO*. Agilent Technologies, Yarnton, England.
 Bala, M. D. & Coville, N. J. (2007). *J. Organomet. Chem.* **692**, 709–730.
 Clark, R. C. & Reid, J. S. (1995). *Acta Cryst.* **A51**, 887–897.
 Coleman, K. S., Turberville, S., Pascu, S. I. & Green, M. L. H. (2005). *J. Organomet. Chem.* **690**, 653–658.
 Farrugia, L. J. (2012). *J. Appl. Cryst.* **45**, 849–854.
 Gao, Y., Twamley, B. & Shreeve, J. M. (2004). *Inorg. Chem.* **43**, 3406–3412.
 Nyamori, V. O. & Bala, M. D. (2008). *Acta Cryst.* **E64**, m1451.
 Nyamori, V. O., Gumede, M. & Bala, M. D. (2010). *Organomet. Chem.* **695**, 1126–1132.
 Nyamori, V. O., Zulu, S. M. & Omondi, B. (2012). *Acta Cryst.* **E68**, m353.
 Ornelas, C. (2011). *New J. Chem.* **35**, 1973–1975.
 Sheldrick, G. M. (2008). *Acta Cryst.* **A64**, 112–122.
 Simenel, A. A., Morozova, E. A., Kuzmenko, Y. V. & Snegur, L. V. (2003). *J. Organomet. Chem.* **665**, 13–14.
 Taylor, A. W. & Licence, P. (2012). *ChemPhysChem*, **13**, 1917–1926.

supplementary materials

Acta Cryst. (2012). E68, m1469 [doi:10.1107/S1600536812045400]

1-(Ferrocen-1-ylmethyl)-3-methylimidazol-3-ium iodide

Vincent O. Nyamori, Siphesihle M. Zulu and Bernard Omondi

Comment

The versatility of ferrocene has seen it be derivatized into a variety of compounds. Because of its stability and unique electronic and redox properties, ferrocene and its derivatives have been successfully applied with much success in various fields including medicinal chemistry (Ornelas, 2011, Simenel *et al.*, 2003). Ferrocenyl imidazolium salts are a special class of ferrocene derivatives which have a cationic ferrocene-imidazole moiety [FcIm⁺] balanced by an inorganic anion *X*⁻. These compounds can be applied as ionic liquids (Taylor & Licence, 2012; Gao *et al.*, 2004) and as precursors to ferrocenated imidazolium carbenes (Coleman *et al.*, 2005). The title compound was synthesized *via* solvent-free conditions providing an economical and clean product requiring less tedious purification process similar to reactions by Bala and Coville (2007) in which one of the reagents is a liquid and acts as a solvating medium.

The average bond lengths between the iron atom (Fe1) and the centroids of the substituted Cp ring (C6–C10) and the unsubstituted Cp ring (C1–C5) are 2.0382 (6) and 2.0354(7.4). The cyclopentadienyl rings of the ferrocene moiety have a slightly staggered conformation. The staggering angle between the two rings is 3.5 (6)° which is smaller than that of Nyamori & Bala (2008), Nyamori *et al.*, (2010) and Nyamori *et al.*, (2012)

Experimental

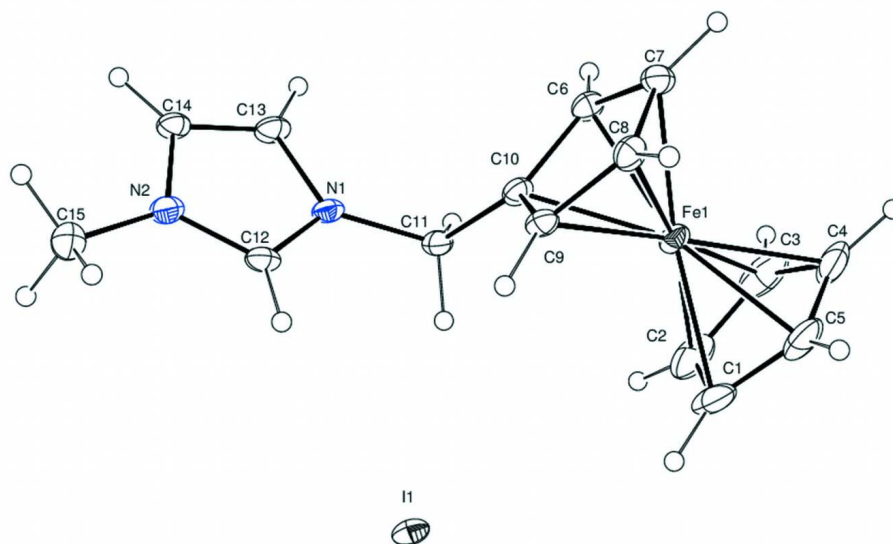
In a round bottom flask, methyl iodide (1.64 ml, 3.75 g, 26.4 mmol) was added to 1-Ferrocenylmethyl-1*H*-imidazole (2.00 g, 7.50 mmol) and allowed to reflux for 12 hrs, at 50 °C under inert atmosphere. The reaction mixture was then allowed to cool to room temperature and washed with anhydrous diethylether (3 x 10 ml). A yellow solid was obtained, which was further dried *in vacuo*. Yellow crystals were obtained from recrystallization in diethylether (2.78 g, 91%); m.p. 134–136 °C (lit. 130–135 °C); IR (ATR cm⁻¹) 3430, 3042, 1567, 1549, 1429, 1150, 1040, 837, 820, 755, 620, 500, 482; ¹H NMR (CDCl₃) 10.13 (1*H*, s, NCH), 7.16 (2*H*, m, NCH), 5.38 (1*H*, q, CH), 4.43 (2*H*, t, C₅H₄), 4.32 (2*H*, t, C₅H₄), 4.29 (5*H*, s, C₅H₅), 4.06 (3*H*, s, NCH₃); ¹³C NMR (CDCl₃) 136.12, 123.63, 121.91, 78.83, 70.09, 69.46, 50.12, 37.15; m/z (ESI) [*M*⁺] - I 281. (100%), 199 (60%); Anal. Calc. for C₁₅H₁₇N₂Fe⁺ 281.07411.

Refinement

Carbon-bound H-atoms were placed in calculated positions [C—H = 0.98 Å for Me H atoms, 0.99 Å for Methylene H atoms, 0.99–1.00 for methine H atoms and 0.95 Å for aromatic H atoms; *U*_{iso}(H) = 1.2*U*_{eq}(C) (1.5 for Me groups)] and were included in the refinement in the riding model approximation.

Computing details

Data collection: *CrysAlis PRO* (Agilent, 2012); cell refinement: *CrysAlis PRO* (Agilent, 2012); data reduction: *CrysAlis PRO* (Agilent, 2012); program(s) used to solve structure: *SHELXS97* (Sheldrick, 2008); program(s) used to refine structure: *SHELXL97* (Sheldrick, 2008); molecular graphics: *ORTEP-3* (Farrugia, 2012); software used to prepare material for publication: *WinGX* (Farrugia, 2012).


Figure 1

The asymmetric unit of the title compound with displacement ellipsoids drawn at the 50% probability level.

1-(Ferrocen-1-ylmethyl)-3-methylimidazol-3-ium iodide

Crystal data

$[\text{Fe}(\text{C}_5\text{H}_5)(\text{C}_{10}\text{H}_{12}\text{N}_2)]\text{I}$

$M_r = 408.06$

Monoclinic, $P2_1/c$

Hall symbol: $-P\ 2_1/c$

$a = 7.2745\ (3)\ \text{\AA}$

$b = 9.3164\ (3)\ \text{\AA}$

$c = 22.2744\ (9)\ \text{\AA}$

$\beta = 90.927\ (3)^\circ$

$V = 1509.39\ (10)\ \text{\AA}^3$

$Z = 4$

$F(000) = 800$

$D_x = 1.796\ \text{Mg m}^{-3}$

Cu $K\alpha$ radiation, $\lambda = 1.54184\ \text{\AA}$

Cell parameters from 7295 reflections

$\theta = 4.0\text{--}74^\circ$

$\mu = 23.96\ \text{mm}^{-1}$

$T = 173\ \text{K}$

Block, yellow

$0.16 \times 0.12 \times 0.07\ \text{mm}$

Data collection

Agilent SuperNova (Dual, Cu at zero, Atlas)
diffractometer

Mirror monochromator

ω scans

Absorption correction: analytical

[*CrysAlis PRO* (Agilent, 2012), based on
expressions of Clark & Reid (1995)]

$T_{\min} = 0.114$, $T_{\max} = 0.285$

6978 measured reflections

2972 independent reflections

2745 reflections with $I > 2\sigma(I)$

$R_{\text{int}} = 0.042$

$\theta_{\max} = 74^\circ$, $\theta_{\min} = 4.0^\circ$

$h = -6 \rightarrow 8$

$k = -10 \rightarrow 11$

$l = -19 \rightarrow 27$

Refinement

Refinement on F^2

Least-squares matrix: full

$R[F^2 > 2\sigma(F^2)] = 0.049$

$wR(F^2) = 0.134$

$S = 1.20$

2972 reflections

173 parameters

0 restraints

Primary atom site location: structure-invariant
direct methods

Secondary atom site location: difference Fourier
map

Hydrogen site location: inferred from
neighbouring sites

H-atom parameters constrained

$$w = 1/[\sigma^2(F_o^2) + (0.0682P)^2 + 3.7636P]$$

where $P = (F_o^2 + 2F_c^2)/3$
 $(\Delta/\sigma)_{\max} = 0.011$

$$\Delta\rho_{\max} = 2.51 \text{ e } \text{\AA}^{-3}$$

$$\Delta\rho_{\min} = -1.53 \text{ e } \text{\AA}^{-3}$$

Special details

Geometry. All e.s.d.'s (except the e.s.d. in the dihedral angle between two l.s. planes) are estimated using the full covariance matrix. The cell e.s.d.'s are taken into account individually in the estimation of e.s.d.'s in distances, angles and torsion angles; correlations between e.s.d.'s in cell parameters are only used when they are defined by crystal symmetry. An approximate (isotropic) treatment of cell e.s.d.'s is used for estimating e.s.d.'s involving l.s. planes.

Refinement. Refinement of F^2 against ALL reflections. The weighted R -factor wR and goodness of fit S are based on F^2 , conventional R -factors R are based on F , with F set to zero for negative F^2 . The threshold expression of $F^2 > \sigma(F^2)$ is used only for calculating R -factors(gt) *etc.* and is not relevant to the choice of reflections for refinement. R -factors based on F^2 are statistically about twice as large as those based on F , and R -factors based on ALL data will be even larger.

Fractional atomic coordinates and isotropic or equivalent isotropic displacement parameters (\AA^2)

	<i>x</i>	<i>y</i>	<i>z</i>	$U_{\text{iso}}^*/U_{\text{eq}}$
C1	0.3124 (13)	-0.0474 (8)	0.7098 (3)	0.0455 (18)
H1	0.3738	-0.1201	0.6839	0.055*
C2	0.4011 (13)	0.0604 (11)	0.7444 (4)	0.056 (2)
H2	0.5369	0.0768	0.7472	0.067*
C3	0.2664 (16)	0.1406 (10)	0.7745 (4)	0.059 (3)
H3	0.2886	0.223	0.8025	0.071*
C4	0.0912 (15)	0.0802 (9)	0.7577 (4)	0.058 (2)
H4	-0.0314	0.1148	0.7714	0.07*
C5	0.1209 (13)	-0.0329 (8)	0.7183 (4)	0.0477 (19)
H5	0.0231	-0.0932	0.6988	0.057*
C6	0.2546 (8)	0.3596 (6)	0.6585 (3)	0.0260 (12)
H6	0.2877	0.4416	0.6855	0.031*
C7	0.0720 (8)	0.3107 (7)	0.6449 (3)	0.0284 (12)
H7	-0.0445	0.3519	0.6608	0.034*
C8	0.0869 (8)	0.1903 (7)	0.6049 (3)	0.0276 (12)
H8	-0.0176	0.1321	0.5883	0.033*
C9	0.2748 (8)	0.1664 (6)	0.5945 (3)	0.0244 (11)
H9	0.3262	0.0884	0.5689	0.029*
C10	0.3810 (8)	0.2713 (6)	0.6275 (3)	0.0243 (11)
C11	0.5858 (8)	0.2808 (6)	0.6288 (3)	0.0254 (12)
H11A	0.6262	0.342	0.6629	0.031*
H11B	0.6384	0.1839	0.635	0.031*
C12	0.6907 (8)	0.2666 (6)	0.5229 (3)	0.0258 (11)
H12	0.6752	0.1659	0.5186	0.031*
C13	0.6956 (8)	0.4835 (7)	0.5609 (3)	0.0294 (13)
H13	0.6849	0.5608	0.5885	0.035*
C14	0.7537 (8)	0.4932 (7)	0.5038 (3)	0.0278 (12)
H14	0.7892	0.578	0.4833	0.033*
C15	0.8032 (9)	0.3090 (9)	0.4206 (3)	0.0357 (15)
H15A	0.9338	0.2831	0.4207	0.053*
H15B	0.7813	0.3881	0.3924	0.053*
H15C	0.7293	0.2257	0.4083	0.053*
N1	0.6545 (7)	0.3416 (5)	0.5722 (2)	0.0233 (10)

N2	0.7512 (7)	0.3536 (6)	0.4809 (2)	0.0274 (10)
Fe1	0.22750 (13)	0.15195 (10)	0.68399 (4)	0.0244 (2)
I1	0.69574 (5)	-0.11859 (4)	0.579436 (17)	0.02780 (16)

Atomic displacement parameters (Å²)

	U^{11}	U^{22}	U^{33}	U^{12}	U^{13}	U^{23}
C1	0.080 (6)	0.023 (3)	0.034 (3)	0.010 (3)	0.005 (3)	0.010 (3)
C2	0.060 (5)	0.059 (6)	0.047 (4)	-0.006 (4)	-0.016 (4)	0.032 (4)
C3	0.115 (8)	0.036 (4)	0.026 (3)	-0.014 (5)	-0.005 (4)	0.003 (3)
C4	0.086 (6)	0.035 (4)	0.054 (5)	-0.004 (4)	0.037 (5)	0.016 (4)
C5	0.071 (5)	0.023 (3)	0.049 (4)	-0.016 (3)	0.009 (4)	0.008 (3)
C6	0.030 (3)	0.017 (3)	0.031 (3)	-0.004 (2)	0.000 (2)	0.000 (2)
C7	0.025 (3)	0.022 (3)	0.037 (3)	0.001 (2)	0.000 (2)	0.001 (2)
C8	0.027 (3)	0.025 (3)	0.031 (3)	-0.007 (2)	-0.001 (2)	0.002 (2)
C9	0.030 (3)	0.015 (3)	0.028 (3)	0.000 (2)	0.000 (2)	0.000 (2)
C10	0.026 (3)	0.017 (3)	0.030 (3)	-0.003 (2)	0.000 (2)	0.003 (2)
C11	0.023 (3)	0.021 (3)	0.032 (3)	0.004 (2)	0.000 (2)	0.005 (2)
C12	0.024 (3)	0.016 (3)	0.037 (3)	0.003 (2)	-0.001 (2)	-0.002 (2)
C13	0.029 (3)	0.014 (3)	0.045 (4)	-0.002 (2)	-0.001 (2)	0.001 (2)
C14	0.023 (3)	0.016 (3)	0.045 (3)	-0.001 (2)	0.003 (2)	0.003 (2)
C15	0.041 (4)	0.035 (4)	0.032 (3)	0.001 (3)	0.006 (3)	0.002 (3)
N1	0.023 (2)	0.014 (2)	0.033 (3)	0.0008 (18)	-0.0016 (18)	0.0024 (19)
N2	0.026 (2)	0.021 (2)	0.035 (3)	0.002 (2)	-0.0005 (19)	0.004 (2)
Fe1	0.0326 (5)	0.0163 (4)	0.0243 (4)	-0.0031 (4)	0.0020 (3)	-0.0002 (3)
I1	0.0357 (2)	0.0139 (2)	0.0336 (2)	0.00001 (13)	-0.00212 (15)	0.00010 (12)

Geometric parameters (Å, °)

C1—C2	1.416 (13)	C8—Fe1	2.054 (6)
C1—C5	1.415 (13)	C8—H8	1
C1—Fe1	2.036 (7)	C9—C10	1.441 (8)
C1—H1	1	C9—Fe1	2.033 (6)
C2—C3	1.410 (15)	C9—H9	1
C2—Fe1	2.020 (8)	C10—C11	1.492 (8)
C2—H2	1	C10—Fe1	2.028 (6)
C3—C4	1.438 (15)	C11—N1	1.476 (7)
C3—Fe1	2.034 (8)	C11—H11A	0.99
C3—H3	1	C11—H11B	0.99
C4—C5	1.390 (12)	C12—N2	1.319 (8)
C4—Fe1	2.044 (7)	C12—N1	1.333 (8)
C4—H4	1	C12—H12	0.95
C5—Fe1	2.042 (7)	C13—C14	1.350 (9)
C5—H5	1	C13—N1	1.380 (7)
C6—C10	1.420 (8)	C13—H13	0.95
C6—C7	1.432 (8)	C14—N2	1.397 (8)
C6—Fe1	2.027 (6)	C14—H14	0.95
C6—H6	1	C15—N2	1.461 (8)
C7—C8	1.437 (9)	C15—H15A	0.98
C7—Fe1	2.048 (6)	C15—H15B	0.98

C7—H7	1	C15—H15C	0.98
C8—C9	1.408 (8)		
C2—C1—C5	107.5 (7)	N2—C12—N1	109.6 (5)
C2—C1—Fe1	68.9 (4)	N2—C12—H12	125.2
C5—C1—Fe1	69.9 (4)	N1—C12—H12	125.2
C2—C1—H1	126.3	C14—C13—N1	108.0 (6)
C5—C1—H1	126.3	C14—C13—H13	126
Fe1—C1—H1	126.3	N1—C13—H13	126
C3—C2—C1	108.7 (8)	C13—C14—N2	106.2 (5)
C3—C2—Fe1	70.2 (5)	C13—C14—H14	126.9
C1—C2—Fe1	70.2 (4)	N2—C14—H14	126.9
C3—C2—H2	125.6	N2—C15—H15A	109.5
C1—C2—H2	125.6	N2—C15—H15B	109.5
Fe1—C2—H2	125.6	H15A—C15—H15B	109.5
C2—C3—C4	106.8 (8)	N2—C15—H15C	109.5
C2—C3—Fe1	69.1 (4)	H15A—C15—H15C	109.5
C4—C3—Fe1	69.7 (5)	H15B—C15—H15C	109.5
C2—C3—H3	126.6	C12—N1—C13	107.8 (5)
C4—C3—H3	126.6	C12—N1—C11	125.3 (5)
Fe1—C3—H3	126.6	C13—N1—C11	126.9 (5)
C5—C4—C3	108.4 (9)	C12—N2—C14	108.4 (5)
C5—C4—Fe1	70.0 (4)	C12—N2—C15	124.8 (6)
C3—C4—Fe1	69.0 (4)	C14—N2—C15	126.8 (6)
C5—C4—H4	125.8	C2—Fe1—C6	121.8 (3)
C3—C4—H4	125.8	C2—Fe1—C10	107.5 (3)
Fe1—C4—H4	125.8	C6—Fe1—C10	41.0 (2)
C4—C5—C1	108.7 (8)	C2—Fe1—C9	124.6 (3)
C4—C5—Fe1	70.2 (4)	C6—Fe1—C9	69.1 (2)
C1—C5—Fe1	69.5 (4)	C10—Fe1—C9	41.6 (2)
C4—C5—H5	125.7	C2—Fe1—C3	40.7 (4)
C1—C5—H5	125.7	C6—Fe1—C3	108.4 (3)
Fe1—C5—H5	125.7	C10—Fe1—C3	125.0 (3)
C10—C6—C7	108.6 (5)	C9—Fe1—C3	162.2 (4)
C10—C6—Fe1	69.5 (3)	C2—Fe1—C1	40.9 (4)
C7—C6—Fe1	70.2 (3)	C6—Fe1—C1	156.8 (3)
C10—C6—H6	125.7	C10—Fe1—C1	120.5 (3)
C7—C6—H6	125.7	C9—Fe1—C1	106.3 (3)
Fe1—C6—H6	125.7	C3—Fe1—C1	68.7 (3)
C6—C7—C8	107.5 (5)	C2—Fe1—C5	68.4 (4)
C6—C7—Fe1	68.6 (3)	C6—Fe1—C5	161.7 (3)
C8—C7—Fe1	69.7 (4)	C10—Fe1—C5	155.6 (3)
C6—C7—H7	126.3	C9—Fe1—C5	119.6 (3)
C8—C7—H7	126.3	C3—Fe1—C5	68.5 (3)
Fe1—C7—H7	126.3	C1—Fe1—C5	40.6 (4)
C9—C8—C7	108.0 (5)	C2—Fe1—C4	68.5 (4)
C9—C8—Fe1	69.0 (3)	C6—Fe1—C4	126.0 (3)
C7—C8—Fe1	69.3 (4)	C10—Fe1—C4	163.1 (3)
C9—C8—H8	126	C9—Fe1—C4	154.3 (4)

C7—C8—H8	126	C3—Fe1—C4	41.3 (4)
Fe1—C8—H8	126	C1—Fe1—C4	67.9 (4)
C8—C9—C10	108.8 (5)	C5—Fe1—C4	39.8 (3)
C8—C9—Fe1	70.7 (3)	C2—Fe1—C7	157.4 (4)
C10—C9—Fe1	69.0 (3)	C6—Fe1—C7	41.2 (2)
C8—C9—H9	125.6	C10—Fe1—C7	69.3 (2)
C10—C9—H9	125.6	C9—Fe1—C7	68.7 (2)
Fe1—C9—H9	125.6	C3—Fe1—C7	121.7 (4)
C6—C10—C9	107.1 (5)	C1—Fe1—C7	160.3 (3)
C6—C10—C11	127.6 (5)	C5—Fe1—C7	123.9 (3)
C9—C10—C11	125.2 (5)	C4—Fe1—C7	107.8 (3)
C6—C10—Fe1	69.5 (3)	C2—Fe1—C8	160.5 (4)
C9—C10—Fe1	69.4 (3)	C6—Fe1—C8	69.1 (2)
C11—C10—Fe1	125.5 (4)	C10—Fe1—C8	69.1 (2)
N1—C11—C10	111.0 (5)	C9—Fe1—C8	40.3 (2)
N1—C11—H11A	109.4	C3—Fe1—C8	156.7 (4)
C10—C11—H11A	109.4	C1—Fe1—C8	123.0 (3)
N1—C11—H11B	109.4	C5—Fe1—C8	106.3 (3)
C10—C11—H11B	109.4	C4—Fe1—C8	120.3 (4)
H11A—C11—H11B	108	C7—Fe1—C8	41.0 (3)
C5—C1—C2—C3	0.3 (8)	C8—C9—Fe1—C10	-120.0 (5)
Fe1—C1—C2—C3	59.8 (6)	C8—C9—Fe1—C3	-166.8 (10)
C5—C1—C2—Fe1	-59.5 (5)	C10—C9—Fe1—C3	-46.8 (11)
C1—C2—C3—C4	0.0 (9)	C8—C9—Fe1—C1	122.2 (4)
Fe1—C2—C3—C4	59.8 (6)	C10—C9—Fe1—C1	-117.8 (4)
C1—C2—C3—Fe1	-59.9 (5)	C8—C9—Fe1—C5	80.2 (5)
C2—C3—C4—C5	-0.3 (9)	C10—C9—Fe1—C5	-159.8 (4)
Fe1—C3—C4—C5	59.1 (6)	C8—C9—Fe1—C4	49.3 (9)
C2—C3—C4—Fe1	-59.4 (5)	C10—C9—Fe1—C4	169.3 (7)
C3—C4—C5—C1	0.5 (9)	C8—C9—Fe1—C7	-37.6 (4)
Fe1—C4—C5—C1	59.0 (5)	C10—C9—Fe1—C7	82.4 (4)
C3—C4—C5—Fe1	-58.5 (6)	C10—C9—Fe1—C8	120.0 (5)
C2—C1—C5—C4	-0.5 (9)	C4—C3—Fe1—C2	-118.1 (8)
Fe1—C1—C5—C4	-59.4 (6)	C2—C3—Fe1—C6	-117.8 (5)
C2—C1—C5—Fe1	58.9 (5)	C4—C3—Fe1—C6	124.2 (5)
C10—C6—C7—C8	0.0 (7)	C2—C3—Fe1—C10	-75.4 (6)
Fe1—C6—C7—C8	-59.1 (4)	C4—C3—Fe1—C10	166.6 (5)
C10—C6—C7—Fe1	59.1 (4)	C2—C3—Fe1—C9	-39.2 (13)
C6—C7—C8—C9	0.1 (7)	C4—C3—Fe1—C9	-157.2 (9)
Fe1—C7—C8—C9	-58.3 (4)	C2—C3—Fe1—C1	37.7 (6)
C6—C7—C8—Fe1	58.4 (4)	C4—C3—Fe1—C1	-80.4 (6)
C7—C8—C9—C10	-0.2 (7)	C2—C3—Fe1—C5	81.5 (6)
Fe1—C8—C9—C10	-58.6 (4)	C4—C3—Fe1—C5	-36.6 (5)
C7—C8—C9—Fe1	58.5 (4)	C2—C3—Fe1—C4	118.1 (8)
C7—C6—C10—C9	-0.1 (7)	C2—C3—Fe1—C7	-161.1 (5)
Fe1—C6—C10—C9	59.4 (4)	C4—C3—Fe1—C7	80.8 (6)
C7—C6—C10—C11	-179.1 (6)	C2—C3—Fe1—C8	162.7 (7)
Fe1—C6—C10—C11	-119.6 (6)	C4—C3—Fe1—C8	44.6 (10)

C7—C6—C10—Fe1	-59.5 (4)	C5—C1—Fe1—C2	118.9 (7)
C8—C9—C10—C6	0.2 (7)	C2—C1—Fe1—C6	49.5 (9)
Fe1—C9—C10—C6	-59.5 (4)	C5—C1—Fe1—C6	168.4 (6)
C8—C9—C10—C11	179.2 (5)	C2—C1—Fe1—C10	81.5 (6)
Fe1—C9—C10—C11	119.6 (6)	C5—C1—Fe1—C10	-159.6 (4)
C8—C9—C10—Fe1	59.7 (4)	C2—C1—Fe1—C9	124.4 (5)
C6—C10—C11—N1	-106.0 (7)	C5—C1—Fe1—C9	-116.7 (5)
C9—C10—C11—N1	75.1 (7)	C2—C1—Fe1—C3	-37.6 (6)
Fe1—C10—C11—N1	163.6 (4)	C5—C1—Fe1—C3	81.4 (6)
N1—C13—C14—N2	-1.3 (7)	C2—C1—Fe1—C5	-118.9 (7)
N2—C12—N1—C13	-0.4 (7)	C2—C1—Fe1—C4	-82.1 (6)
N2—C12—N1—C11	-179.5 (5)	C5—C1—Fe1—C4	36.8 (5)
C14—C13—N1—C12	1.1 (7)	C2—C1—Fe1—C7	-163.4 (8)
C14—C13—N1—C11	-179.9 (5)	C5—C1—Fe1—C7	-44.5 (10)
C10—C11—N1—C12	-86.7 (7)	C2—C1—Fe1—C8	165.2 (5)
C10—C11—N1—C13	94.4 (7)	C5—C1—Fe1—C8	-75.9 (5)
N1—C12—N2—C14	-0.4 (7)	C4—C5—Fe1—C2	81.9 (7)
N1—C12—N2—C15	-179.5 (5)	C1—C5—Fe1—C2	-38.0 (5)
C13—C14—N2—C12	1.1 (7)	C4—C5—Fe1—C6	-45.5 (13)
C13—C14—N2—C15	-179.8 (6)	C1—C5—Fe1—C6	-165.4 (8)
C3—C2—Fe1—C6	81.2 (6)	C4—C5—Fe1—C10	166.6 (7)
C1—C2—Fe1—C6	-159.3 (5)	C1—C5—Fe1—C10	46.7 (10)
C3—C2—Fe1—C10	123.8 (5)	C4—C5—Fe1—C9	-159.6 (6)
C1—C2—Fe1—C10	-116.7 (5)	C1—C5—Fe1—C9	80.5 (5)
C3—C2—Fe1—C9	166.5 (5)	C4—C5—Fe1—C3	37.9 (7)
C1—C2—Fe1—C9	-74.1 (6)	C1—C5—Fe1—C3	-82.0 (6)
C1—C2—Fe1—C3	119.5 (8)	C4—C5—Fe1—C1	119.9 (8)
C3—C2—Fe1—C1	-119.5 (8)	C1—C5—Fe1—C4	-119.9 (8)
C3—C2—Fe1—C5	-81.7 (6)	C4—C5—Fe1—C7	-76.7 (7)
C1—C2—Fe1—C5	37.8 (5)	C1—C5—Fe1—C7	163.4 (4)
C3—C2—Fe1—C4	-38.7 (6)	C4—C5—Fe1—C8	-118.0 (6)
C1—C2—Fe1—C4	80.7 (6)	C1—C5—Fe1—C8	122.1 (5)
C3—C2—Fe1—C7	45.9 (11)	C5—C4—Fe1—C2	-81.7 (6)
C1—C2—Fe1—C7	165.4 (7)	C3—C4—Fe1—C2	38.2 (6)
C3—C2—Fe1—C8	-159.4 (8)	C5—C4—Fe1—C6	163.9 (5)
C1—C2—Fe1—C8	-39.9 (12)	C3—C4—Fe1—C6	-76.2 (7)
C10—C6—Fe1—C2	79.9 (5)	C5—C4—Fe1—C10	-160.8 (10)
C7—C6—Fe1—C2	-160.3 (5)	C3—C4—Fe1—C10	-40.9 (15)
C7—C6—Fe1—C10	119.7 (5)	C5—C4—Fe1—C9	44.3 (11)
C10—C6—Fe1—C9	-38.6 (3)	C3—C4—Fe1—C9	164.2 (7)
C7—C6—Fe1—C9	81.1 (4)	C5—C4—Fe1—C3	-119.9 (9)
C10—C6—Fe1—C3	122.7 (5)	C5—C4—Fe1—C1	-37.5 (6)
C7—C6—Fe1—C3	-117.6 (5)	C3—C4—Fe1—C1	82.4 (6)
C10—C6—Fe1—C1	44.1 (8)	C3—C4—Fe1—C5	119.9 (9)
C7—C6—Fe1—C1	163.8 (7)	C5—C4—Fe1—C7	122.0 (6)
C10—C6—Fe1—C5	-160.5 (9)	C3—C4—Fe1—C7	-118.1 (6)
C7—C6—Fe1—C5	-40.7 (11)	C5—C4—Fe1—C8	78.9 (6)
C10—C6—Fe1—C4	165.2 (5)	C3—C4—Fe1—C8	-161.2 (5)
C7—C6—Fe1—C4	-75.1 (6)	C6—C7—Fe1—C2	48.2 (9)

C10—C6—Fe1—C7	-119.7 (5)	C8—C7—Fe1—C2	167.4 (8)
C10—C6—Fe1—C8	-81.9 (4)	C8—C7—Fe1—C6	119.2 (5)
C7—C6—Fe1—C8	37.8 (4)	C6—C7—Fe1—C10	-37.5 (4)
C6—C10—Fe1—C2	-118.7 (5)	C8—C7—Fe1—C10	81.7 (4)
C9—C10—Fe1—C2	122.8 (4)	C6—C7—Fe1—C9	-82.2 (4)
C11—C10—Fe1—C2	3.5 (6)	C8—C7—Fe1—C9	37.0 (3)
C9—C10—Fe1—C6	-118.5 (5)	C6—C7—Fe1—C3	81.7 (5)
C11—C10—Fe1—C6	122.2 (7)	C8—C7—Fe1—C3	-159.1 (4)
C6—C10—Fe1—C9	118.5 (5)	C6—C7—Fe1—C1	-161.0 (8)
C11—C10—Fe1—C9	-119.3 (6)	C8—C7—Fe1—C1	-41.8 (10)
C6—C10—Fe1—C3	-77.3 (5)	C6—C7—Fe1—C5	165.7 (4)
C9—C10—Fe1—C3	164.2 (5)	C8—C7—Fe1—C5	-75.1 (5)
C11—C10—Fe1—C3	45.0 (7)	C6—C7—Fe1—C4	124.8 (5)
C6—C10—Fe1—C1	-161.4 (4)	C8—C7—Fe1—C4	-116.0 (4)
C9—C10—Fe1—C1	80.1 (4)	C6—C7—Fe1—C8	-119.2 (5)
C11—C10—Fe1—C1	-39.2 (6)	C9—C8—Fe1—C2	-45.6 (10)
C6—C10—Fe1—C5	165.2 (7)	C7—C8—Fe1—C2	-165.5 (9)
C9—C10—Fe1—C5	46.7 (9)	C9—C8—Fe1—C6	82.0 (4)
C11—C10—Fe1—C5	-72.6 (9)	C7—C8—Fe1—C6	-38.0 (4)
C6—C10—Fe1—C4	-45.5 (13)	C9—C8—Fe1—C10	37.9 (3)
C9—C10—Fe1—C4	-163.9 (12)	C7—C8—Fe1—C10	-82.0 (4)
C11—C10—Fe1—C4	76.8 (13)	C7—C8—Fe1—C9	-119.9 (5)
C6—C10—Fe1—C7	37.7 (4)	C9—C8—Fe1—C3	169.9 (7)
C9—C10—Fe1—C7	-80.8 (4)	C7—C8—Fe1—C3	50.0 (9)
C11—C10—Fe1—C7	159.9 (6)	C9—C8—Fe1—C1	-75.7 (5)
C6—C10—Fe1—C8	81.7 (4)	C7—C8—Fe1—C1	164.4 (4)
C9—C10—Fe1—C8	-36.8 (3)	C9—C8—Fe1—C5	-116.8 (4)
C11—C10—Fe1—C8	-156.1 (6)	C7—C8—Fe1—C5	123.3 (4)
C8—C9—Fe1—C2	163.1 (4)	C9—C8—Fe1—C4	-157.7 (4)
C10—C9—Fe1—C2	-76.8 (5)	C7—C8—Fe1—C4	82.4 (5)
C8—C9—Fe1—C6	-81.9 (4)	C9—C8—Fe1—C7	119.9 (5)
C10—C9—Fe1—C6	38.1 (3)		
