

SCIENTIFIC REPORTS



OPEN

Evolutionary mechanisms of runaway chromosome number change in *Agrodiaetus* butterflies

Alisa O. Vershinina^{1,2} & Vladimir A. Lukhtanov^{1,3} 

Despite predictions of the classic, hybrid-sterility model of chromosomal speciation, some organisms demonstrate high rate of karyotype evolution. This rate is especially impressive in *Agrodiaetus* butterflies that rapidly evolved the greatest chromosome number diversity known in animal kingdom within a single subgenus. Here we analyzed karyotype evolution in *Agrodiaetus* using phylogenetic comparative methods. We found that chromosome numbers possess a strong phylogenetic signal. This disproves the chromosome megaevolution model that proposes multiple chromosome rearrangements to accumulate independently in each of closely related species. We found that Brownian motion gives a more adequate description of observed trait changes than Ornstein-Uhlenbeck model. This indicates that chromosome numbers evolve via random walk along branches of the phylogeny. We discovered a correlation between karyotype changes and phylogeny branch lengths. This gradual pattern is inconsistent with the hybrid-sterility model which, due to association of major chromosome changes with cladogenetic events, predicts a high degree of punctualism in karyotype evolution. Thus, low underdominance of chromosomal rearrangements and/or prevalence of the recombination-suppression model over the hybrid-sterility model of chromosome speciation are the most common engines of the runaway chromosome number change observed.

Chromosomal rearrangements (CRs) play significant role in both life functioning and evolution. They are subject of studies of physiologists, geneticists and medical researchers because multiple syndromes and heritable diseases are associated with CRs¹. CRs also attract the attention of evolutionary biologists since they trigger speciation via reducing fertility of chromosomal heterozygotes (if CRs are underdominant) or/and via suppressed recombination (if CRs are neutral and do not influence fertility of chromosomal heterozygotes)². CRs maintain postzygotic isolation between well-established species and protect hybridizing lineages from merging³. While protecting the blocks of linked genes from recombination, CRs are crucial in adaptive evolution⁴⁻⁶. Chromosome fusions and fissions change the number of chromosomes altering the number of linkage groups⁷⁻⁹. Finally, being a part of genome architecture, chromosome rearrangements are considered to be a selectable trait *per se*^{10,11}.

Cytological events and intracellular processes involved in chromosome evolution are relatively well-studied¹²⁻¹⁵, however, much less is known about evolutionary mechanisms determining probability and rate of CRs fixation in populations. Chromosome diversity in different groups of organisms show that many lineages are characterized by karyotypic constancy among species, in particular by absence or low level of interspecific variability of chromosome numbers^{3,8}. This stability is in good compliance with the fact that new chromosomal rearrangements are usually associated with heterozygote disadvantage. Therefore, their distribution and probability of fixation within a large population is low¹⁶⁻¹⁸. For example, genomes of Lepidoptera, the order which includes butterflies and moths provide an excellent example of the chromosome number stability: haploid number (n) of chromosomes n = 31 is mostly invariable and characterizes the vast majority of species, genera and families¹⁹⁻²².

In contrast to this apparent uniformity, multiple examples of chromosome number diversity within small groups of animals and plants are known. Most extreme cases of rapid chromosome evolution are found in insects, for example, in the genus *Apiomorpha* (Hemiptera: Eriococcidae) interspecific karyotypic diversity of haploid chromosome numbers from n = 2 to n = 96 was discovered²³. Among Lepidoptera particularly striking are

¹Department of Karyosystematics, Zoological Institute of Russian Academy of Sciences, Universitetskaya nab. 1, 199034, St. Petersburg, Russia. ²Department of Ecology & Evolutionary Biology, University of California Santa Cruz, 95064, Santa Cruz, CA, USA. ³Department of Entomology, St Petersburg State University, Universitetskaya nab. 7/9, 199034, St. Petersburg, Russia. Correspondence and requests for materials should be addressed to A.O.V. (email: vershininaalissa@gmail.com) or V.A.L. (email: lukhtanov@mail.ru)

Godyris (family Nymphalidae, $n = 13\text{--}120$)²⁴, *Leptidea* (Pieridae, $n = 28\text{--}103$)^{7, 8, 19, 25, 26}, *Lysandra* (Lycaenidae, $n = 24\text{--}93$)²⁷, and *Polyommatus* (Lycaenidae). In *Polyommatus* extreme variety of chromosomal numbers is concentrated within the monophyletic group of closely related *Agrodiaetus* species³. This West Palearctic subgenus numbers nearly 120 species, had branched roughly three million years ago and has been evolving with considerably high diversification rate^{3, 28}. *Agrodiaetus* has a larger karyotype diversity than any other animal group with a total range of haploid chromosome numbers from $n = 10$ to $n = 134$ ^{29–34}.

In vertebrates, the range of chromosome number variation between closely related species is smaller, yet still impressive: in *Corydoras* fish genus (Siluriformes: Callichthyidae)³⁵ haploid numbers are ranging from $n = 22$ to $n = 51$. South American rodents of the genus *Ctenomys* (Rodentia: Ctenomyidae) have haploid chromosome numbers varying from $n = 5$ to $n = 35$ among the 60 species described^{36, 37}. Muntjac deers (Artiodactyla: Cervidae) have karyotypes, ranging from $n = 3$ to $n = 23$ ³⁸. In plants, the greatest range of within-genus karyotype variation not related to polyploidy is found in *Carex*, where haploid chromosome number ranges from $n = 6$ to $n = 66$ ^{10, 39}.

The tempo and dynamics of such runaway chromosome number evolution are still poorly studied (for some examples see refs 3, 8, 10, 21, 39–42). Here we analyze this evolutionary phenomenon by using the butterfly subgenus *Agrodiaetus* as a model system and applying comparative phylogenetic methods in order to track ways of chromosomal changes during natural history of taxa^{10, 27, 39, 42}. We were interested in the three following questions.

- (1) Do chromosome numbers possess a phylogenetic signal? In other words, do multiple chromosome fissions and fusions accumulate independently in each of closely related species of *Agrodiaetus*? Or, on the contrary, does this accumulation occur in rows of multiple speciation events? Phylogenetic signal has been found earlier in *Agrodiaetus* karyotype evolution by Kandul with coauthors³ via Abouheif's test for serial independence. Our analysis here aims to extend their results since they did not test intensity of phylogenetic signal, neither incorporated phylogenetic uncertainty into analysis nor produced any qualitative assessment of their results.
- (2) Can the transformation of chromosome numbers be described by a more “neutral” model, such as Brownian motion³, or karyotypes evolve towards an adaptive optimum?
- (3) What is the temporal pattern of chromosome number change within a lifespan of species? More specifically, (3a) is there association of CR fixations with speciation events? Such association is predicted by the classic chromosome-sterility theories of chromosome speciation and stems from the idea of fixation of a single underdominant CR^{17, 43}.

If CR fixation correlates with speciation, we would expect a strong punctualism in chromosome evolution with the majority of CRs associated with cladogenetic events at the very initial stages of species diversification. Alternatively, (3b) CRs changing the chromosome number do not seriously impact fertility, can accumulate gradually and are not necessarily associated with early stages of speciation.

Results

Phylogenetic reconstruction. Phylogenetic trees using Maximum Likelihood (ML) and Bayesian Inference (BI) methods were obtained for 130 populations corresponding to 111 species comprising all the sequence data available to date for 120 described *Agrodiaetus* species (see Supplementary Table S1 for the sequence IDs). BI was performed with the following models: GTR + I + Γ for mitochondrial markers *COI* and *COII* and HKY85 for *leu-tRNA*; GTR for nuclear *5.8S rDNA* + *ITS2* + *28S rDNA*. ML analysis was performed with GTR model for the entire dataset (ML of the most plausible tree was $-\ln = 19652.9$). BI consensus tree topology was mostly the same as ML tree topology. Figure 1 shows the calculated BI consensus tree. Most nodes were strongly supported; more than half of all nodes had Bayesian posterior probabilities of 0.90 and higher.

Phylogenetic signal. We calculated the phylogenetic signal using Pagel's lambda and Blomberg's K metrics^{44, 45}. As shown in the Fig. 2, K and lambda vary in relation to tree topology (including different branch lengths), but for most phylograms both K and lambda approach the value indicating strong phylogenetic signal ($K = 1$, $\lambda = 1$). Pagel's lambda has varied from $\lambda = 0.81$ to $\lambda = 1.03$ and Blomberg's K from 0.06 to 1.4 (with $K = 0.9$ and $K = 1$ for the most tree topologies). Obtained K and lambda values were significantly different than expected by chance ($p < 0.001$). Lambda values were tested using likelihood ratio tests where topologies with $\lambda = 0$ and $\lambda = 1$ were compared against each other and against maximum likelihood lambda values accordingly. Maximum likelihood values of lambda were significantly greater than 0, however maximum likelihood λ value was not distinguished from the modelled $\lambda = 1$ ($p < 0.001$).

Brownian motion versus Ornstein-Uhlenbeck model. The Brownian motion (BM) as a constant variance process is often employed to model and characterize the continuous quantitative trait evolution, which is controlled by influence of stochastic factors^{46–50}. Alternatively Ornstein-Uhlenbeck process (OU) is the commonly used to model selective pressure towards a particular range of phenotypes indicating an adaptive optimum^{50, 51}. BM and OU processes were compared via corrected Akaike information criteria (AICc)⁵². Akaike weights demonstrated the higher likelihood rate for BM model (Fig. 3). Thus, we conclude that BM model gives a more adequate description of observed trait changes than the OU model.

Gradual versus punctual mode of chromosome evolution. To test for a punctual versus gradual mode of trait evolution we used κ (kappa) parameter⁵³. Testing kappa values using AICc demonstrated that likelihood of $\kappa = 1$ and AICc of maximum likelihood kappa coincided almost entirely, whereas AICc of other models

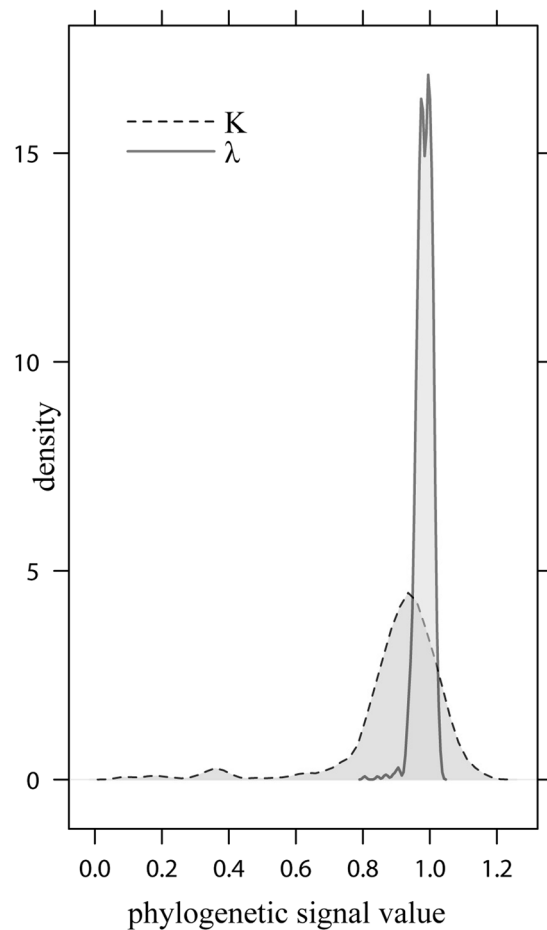


Figure 2. Density distribution of phylogenetic signal for Pagel's lambda and Blomberg's K metrics across 1000 Bayesian post burn-in phylograms for subgenus *Agrodiaetus*.

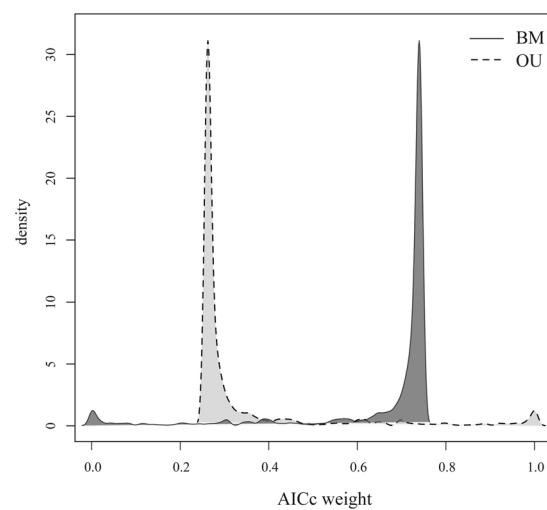


Figure 3. Density distribution of Brownian motion (BM) and Ornstein–Uhlenbeck (OU) models support over 1000 Bayesian post burn-in phylograms for *Agrodiaetus* species. AICc is Akaike information criterion with a correction for finite sample sizes. AICc weights are the relative likelihood of each model: the weight is smaller if the model is less plausible.

of chromosome change has been described by Baker and Bickham^{54–56} under the name “karyotype megaevolution”. This model describes a fast accumulation of multiple CRs occurring independently in each species which

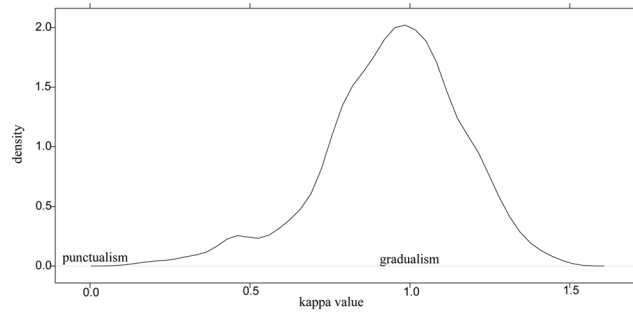


Figure 4. Density distribution of maximum likelihood tree-scaling parameter kappa values across 1000 Bayesian post burn-in phylograms for *Agrodiaetus* species.

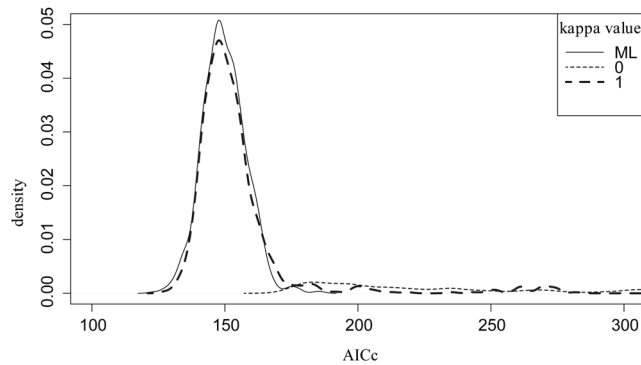


Figure 5. Density distribution of Pagel's kappa model support over 1000 Bayesian post burn-in phylograms for *Agrodiaetus* species. AICc is Akaike information criteria with a correction for finite sample sizes, the smaller the AICc means the more plausible the model.

results in a lack of phylogenetic signal. Visual inspection of the *Polyommatus* (*Agrodiaetus*) chromosome numbers mapped on the consensus Bayesian phylogeny (Fig. 1) shows that some sister species have extremely different chromosome numbers (e.g. $n = 10$ in *P. masulensis* and $n = 85$ in *P. posthumus*). These drastically different karyotypes are not a result of polyploidy but a consequence of independent chromosome fissions and fusions²⁹. Such a case may seem, at the first glance, to correspond with the karyotype megaevolution model.

An alternative to the chromosomal megaevolution is the model of stepwise accumulation of similar CRs in consequent rows of speciation events resulting in strong phylogenetic signal⁸. As our estimates show, this is certainly the case for the chromosome number evolution in *Agrodiaetus*. The studied karyotypes are phylogenetically nonindependent: CRs such as fusions and fissions are likely to pile up in *Agrodiaetus* during a succession of multiple speciation events and incrementally result in low and high chromosome numbers. Consequently, closely related taxa tend to have similar chromosome sets. Furthermore, strong phylogenetic signal also suggests that recently diverged species are more karyotypically akin than deeply diverged ones: the expected difference in chromosome sets between the descendants grows proportional to the time since they shared a common ancestor.

The strong phylogenetic signal does not describe a particular process or rate of evolution^{57,58}. Previously BM model has been hypothesized to characterize rapid karyotype transformations in *Agrodiaetus*³. The model implies gradual changes through time to occur aside from the current character state and expected mean of the changes^{50,59}. Our current study confirms that in *Agrodiaetus* dynamics of chromosome evolution follows Brownian motion and can be described as neutral drift (or “random walk”) with changes around a mean of zero.

Since karyotypes may fall into the selective optimum or equilibrium, we checked also the presence of adaptive peak in chromosome numbers by testing OU model against BM. The idea of the adaptive shift in chromosomal numbers reflects certain conceptions. First of all, quantum and stasipatric chromosomal speciation models imply adaptive chromosome re-patterning via spontaneous gene and linkage group rearrangements^{17,60}. Second, spatial constraints can also occur because chromosome size and shape are important in the segregation of chromosomes during the cell division²⁹. There also may be special cases of adaptivity in chromosome organization, such as eu- and heterochromatin adaptation to nocturnal and diurnal vision in mammals⁶¹.

On a range of different tree topologies modelling results conclusively demonstrate that BM, but not OU fits the data (Fig. 3). Therefore, it is likely that every next step in chromosome evolution along a phylogenetic lineage is independent of previous ones with variance accumulating over time. Thereby CRs and karyotypes depend on phylogenesis but probably not on any adaptive regime or evolutionary constraint.

If underdominant CRs directly initiate speciation via formation of post-zygotic reproductive isolation, as suggested in classic theories of chromosomal evolution^{17,43}, their fixation should be associated with the points

of cladogenesis resulting in strong punctual mode of karyotype evolution. If CRs are not underdominant (or at least not strongly underdominant), their fixation and accumulation is expected to be gradual without any association between CRs and with cladogenesis. Graduality is consistent with at least three different scenarios. First, CRs might be irrelevant for reproductive isolation¹⁷. Second, according to the recombination-suppression model², CRs might promote parapatric speciation working as a genetic filter between populations^{60, 62–64}. Recombination-suppression model implies that mutations associated with the rearranged parts of the genomes are protected from intrapopulation gene flow. This results in accumulation of genetic incompatibilities leading to reproductive isolation and eventual speciation. Third, cascade⁴³ and monobrachial⁶⁵ models postulate the sequential accumulation of several neutral or nearly neutral CRs in independent populations resulting in interpopulation post-zygotic isolation.

In this study, we discovered a correlation between number of CRs and branch length, and this pattern is in a good agreement with gradual accumulation of CRs in *Agrodiaetus*. AICc conclusively demonstrate that $\kappa = 1$ model fits the data better $\kappa = 0$ or $\kappa = 3$ (Fig. 5). Thus, our data are hardly compatible with the classic chromosomal hybrid sterility model being the main engine of chromosome number diversity in *Agrodiaetus*. However, the results are well consistent with the mentioned above scenarios of karyotype evolution in which chromosome changes indirectly or weakly affect fertility of heterozygotes for CRs.

In Lepidoptera, there are other empirical data suggesting that chromosome fusions and fissions are not strongly underdominant and can accumulate gradually. There is an experimental evidence that *Antheraea* moths heterozygous for multiple CRs are not sterile⁶⁶. In *Leptidea sinapis* butterflies (Lepidoptera, Pieridae) the diploid chromosome number gradually decreases from $2n = 106$ in Spain to $2n = 56$ in eastern Kazakhstan, resulting in a 6000 km-wide cline where within-species accumulation of chromosomal changes is shown^{7, 8, 67}. Homoploid hybrid speciation in *Agrodiaetus* via hybridization between chromosomal races with $n = 27$ and $n = 68$ and consequent chromosome sorting³³ assumes that F_1 hybrids heterozygous for 41 fusions/fissions were fertile. Thus, it seems unlikely that CRs are strongly underdominant in these groups. Interestingly, low underdominance of chromosomal fusions and fissions is not restricted to Lepidoptera. For example, it is also known in mammals^{68–70}.

Finally, we should note that Lepidoptera, including *Agrodiaetus* butterflies, have holocentric chromosomes lacking localized centromeres and distinct chromosome arms^{71–73}. Due to this special organisation fissions and fusions do not dramatically alter meiotic segregation as in the case of monocentric chromosomes which may become acentric after fission or dicentric after fusion. Higher viability of chromosomes after fragmentations and fusions and other phenomena related to holocentric structure such as holokinetic drive⁷⁴ also could contribute to the origin of chromosomal diversity. Nevertheless, we believe that low underdominance of chromosomal rearrangements and prevalence of recombination-suppression over hybrid-sterility model are most common engines of runaway evolution of chromosome numbers in Lepidoptera.

Methods

Phylogeny reconstruction. Sequences (5.8S rDNA partial gene, *ITS2* complete and 28S rDNA partial, *COI*, *leu-tRNA* complete and *COII* – partial) were collected from GenBank. Sequences of each gene were aligned separately by clustalW, the alignments were corrected manually using BioEdit⁷⁵. Since *ITS2* sequence has multiple indels which are highly specific on the species-level, it provides additional information for phylogenetic analysis^{76, 77}, so we treated all *ITS2* indels as binary characters (insertion - 1, deletion - 0). The final concatenated alignment had length of 2948 nucleotides (*COI* 1–1539 bp, *leu-tRNA* 1540–1604 bp, *COII* 1605–2281 bp, 5.8S rDNA + *ITS2* + 28S rDNA 2282–2948 bp) and 23 binary characters. Additional 643 bp fragment of *COI* and 592 bp fragment of *ITS2* for *P. kendevani* (*ITS2*), *P. luna* (*ITS2*), and *P. shahukuhensis* (*ITS2*) were kindly provided by Nazar Shapoval, Zoological Institute, RAS.

As an outgroup, we used *P. icarus* (Rottemburg, 1775) and *P. stempfferi* (Brandt, 1938) since they were earlier inferred as the outgroups to the subgenus *Agrodiaetus*²⁸. Substitution models were inferred by the hierarchical likelihood ratio, Akaike and Bayesian information criteria tests, as implemented in jModelTest²⁷⁸, models were evaluated separately for each gene. ML analysis was conducted using RAXML Black Box⁷⁹ on the CIPRES Science Gateway platform⁸⁰. Ten independent search replicates were run under the GTR model. Bootstrap support values for nodes on the ML topology were computed with RAXML rapid bootstrapping algorithm⁸¹ by running 700 bootstrap replicates. Bayesian analysis was conducted using MrBayes 3.2⁸² on four molecular (*COI*, *COII*, *leu-tRNA* and 5.8S rDNA + *ITS2* + 28S rDNA genes) and one “standard” (binary) partitions using 7 million generations. Two independent runs were performed, each with four chains (three heated and one cold), using independent-gamma rate relaxed clock model with uniform branch lengths. Trees were sampled at intervals of every 2,000 generations. Stationarity was determined by examining log-likelihood scores plotted across generations with Tracer (<http://tree.bio.ed.ac.uk/software/tracer/>), plotting posterior probabilities of all splits for paired MCMC runs by AWTY on-line service⁸³ and by examining standard deviation of split frequencies between the two runs for convergence. Of the 3,501 trees sampled in each run, first 5% were discarded as burn-in and the remaining trees were used to construct a 50% majority rule consensus phylogram.

Phylogenetic signal and mode of evolution. Following approach suggested by Hipp¹⁰ and taking into account the lack of visual markers in holocentric chromosomes, we used only chromosome number “as a proxy for karyotype” and modeled chromosome number evolution as an evolution of a quantitative continuous character. Frequency of chromosome fusions and fissions depends on the number of chromosomes. Therefore, haploid chromosome numbers were log-transformed prior to phylogenetic comparative analysis.

To make the sampling as complete as possible we used all chromosome data available, including our own previously published results^{3, 30–34, 76, 84–91}. In the analysis, the majority of the tips on the phylogenetic tree refer to species (Supplementary Table S1). In cases of intraspecific chromosomal variations, chromosomal races (i.e., populations with stable differentiated karyotypes) were used as entities for phylogenetic comparative analysis

(in this cases tips on the phylograms refer to populations). Such cases were found in *P. cyaneus*, *P. damocles*, *P. demavendi*, *P. dolus*, *P. elbursicus*, *P. firdussii*, *P. iphigenia*, *P. mithridates*, *P. rjabovi* and *P. sennanensis*. For five species karyotype data are absent and we excluded them from the phylogenetic comparative analysis (*P. actinides*, *P. dagmara*, *P. magnificus*, *P. mediator*, *P. pulcher*). To incorporate phylogenetic uncertainty into analysis the entire comparative approach was carried out on 1000 ultrametric randomly chosen post burn-in phylograms⁹².

All computational procedures were performed using R packages for phylogenetic comparative methods: ape⁹³, geiger: fitContinuous⁹⁴, caper: pgl (<https://r-forge.r-project.org/projects/caper/>), phytools: phylogis⁹⁵ and qpcR: akaike.weights (<https://r-forge.r-project.org/projects/qpcR/>).

Data Availability

All data analyzed during this study are included in this published article and its Supplementary Information file.

References

1. Sumner, A. T. *Chromosomes: Organization and Function* (Wiley-Blackwell, 2003).
2. Faria, R. & Navarro, A. Chromosomal speciation revisited: rearranging theory with pieces of evidence. *Trends Ecol. Evol.* **25**, 660–669 (2010).
3. Kandul, N. P., Lukhtanov, V. A. & Pierce, N. E. Karyotypic diversity and speciation in *Agrodiaetus* butterflies. *Evolution* **61**, 546–559 (2007).
4. Butlin, R. K. Recombination and speciation. *Mol. Ecol.* **14**, 2621–2635 (2005).
5. Pringle, E. G. *et al.* Synteny and chromosome evolution in the Lepidoptera: evidence from mapping in *Heliconius melpomene*. *Genetics* **177**, 417–26 (2007).
6. Larkin, D. M. *et al.* Breakpoint regions and homologous synteny blocks in chromosomes have different evolutionary histories. *Genome Res.* **19**, 770–777 (2009).
7. Dincă, V., Lukhtanov, V. A., Talavera, G. & Vila, R. Unexpected layers of cryptic diversity in wood white *Leptidea* butterflies. *Nat. Commun.* **2**, 324 (2011).
8. Lukhtanov, V. A., Dincă, V., Talavera, G. & Vila, R. Unprecedented within-species chromosome number cline in the Wood White butterfly *Leptidea sinapis* and its significance for karyotype evolution and speciation. *BMC Evol. Biol.* **11**, 109 (2011).
9. Dumont, B. L. & Payseur, B. A. Genetic analysis of genome-scale recombination rate evolution in house mice. *PLoS Genet.* **7**, e1002116, doi:10.1371/journal.pgen.1002116.
10. Hipp, A. L. Nonuniform processes of chromosome evolution in sedges (*Carex*: Cyperaceae). *Evolution* **61**, 2175–2194 (2007).
11. Avelar, A. T., Perfeito, L., Gordo, I. & Ferreira, M. G. Genome architecture is a selectable trait that can be maintained by antagonistic pleiotropy. *Nat. Commun.* **4**, 2235 (2013).
12. Nguyen, P., Sahara, K., Yoshida, A. & Marec, F. Evolutionary dynamics of rDNA clusters on chromosomes of moths and butterflies (Lepidoptera). *Genetica* **138**, 343–354 (2010).
13. Šichová, J., Nguyen, P., Dalíková, M. & Marec, F. Chromosomal evolution in tortricid moths: conserved karyotypes with diverged features. *PLoS One* **8**, e64520 (2013).
14. Romanov, M. N. *et al.* Reconstruction of gross avian genome structure, organization and evolution suggests that the chicken lineage most closely resembles the dinosaur avian ancestor. *BMC Genomics* **15**, 1060 (2014).
15. Vershinina, A. O., Anokhin, B. A. & Lukhtanov, V. A. Ribosomal DNA clusters and telomeric (TTAGG)_n repeats in blue butterflies (Lepidoptera, Lycaenidae) with low and high chromosome numbers. *Comp. Cytogenet.* **9**, 161–171 (2015).
16. White, M. J. D. Chain processes in chromosomal speciation. *Syst. Zool.* **27**, 285–298 (1978).
17. King, M. G. *Species Evolution. The Role of Chromosome Change*. (Cambridge University Press, 1993).
18. Coyne, J. A. & Orr, A. H. *Speciation*. (Sinauer Associates, 2004).
19. Robinson, R. *Lepidoptera genetics*. (Pergamon Press, 1971).
20. Lukhtanov, V. A. Sex chromatin and sex chromosome systems in nonditrysian Lepidoptera (Insecta). *J. Zool. Syst. Evol. Res.* **38**, 73–79 (2000).
21. Lukhtanov, V. A. Chromosome number evolution in skippers (Lepidoptera, Hesperidae). *Comp. Cytogenet.* **8**, 275–291 (2014).
22. Ahola, V. *et al.* The Glanville fritillary genome retains an ancient karyotype and reveals selective chromosomal fusions in Lepidoptera. *Nat. Commun.* **5**, 4737 (2014).
23. Cook, L. G. Extraordinary and extensive karyotypic variation: A 48-fold range in chromosome number in the gall-inducing scale insect *Apiomorpha* (Hemiptera: Coccoidea: Eriococcidae). *Genome* **43**, 255–263 (2000).
24. Brown, K. S., Von Schoultz, B. & Suomalainen, E. Chromosome evolution in Neotropical Danainae and Ithomiinae (Lepidoptera). *Hereditas* **141**, 216–236 (2004).
25. Šichová, J. *et al.* Dynamic karyotype evolution and unique sex determination systems in *Leptidea* wood white butterflies. *BMC Evol. Biol.* **15**, 89, doi:10.1186/s12862-015-0375-4 (2015).
26. Šichová, J. *et al.* Fissions, fusions, and translocations shaped the karyotype and multiple sex chromosome constitution of the northeast-Asian wood white butterfly. *Leptidea amurensis*. *Biol. J. Linn. Soc.* **118**, 457–471 (2016).
27. Talavera, G., Lukhtanov, V. A., Rieppel, L., Pierce, N. E. & Vila, R. In the shadow of phylogenetic uncertainty: The recent diversification of *Lysandra* butterflies through chromosomal change. *Mol. Phylogenet. Evol.* **69**, 469–478 (2013).
28. Talavera, G., Lukhtanov, V. A., Pierce, N. E. & Vila, R. Establishing criteria for higher-level classification using molecular data: the systematics of *Polyommatus* blue butterflies (Lepidoptera, Lycaenidae). *Cladistics* **29**, 166–192 (2013).
29. Lukhtanov, V. A. & Dantchenko, A. V. Principles of the highly ordered arrangement of metaphase I bivalents in spermatocytes of *Agrodiaetus* (Insecta, Lepidoptera). *Chromosome Res.* **10**, 5–20 (2002).
30. Kandul, N. P. *et al.* Phylogeny of *Agrodiaetus* Hübner 1822 (Lepidoptera: Lycaenidae) inferred from mtDNA sequences of COI and COII and nuclear sequences of EF1- α : karyotype diversification and species radiation. *Syst. Biol.* **53**, 278–298 (2004).
31. Lukhtanov, V. A. *et al.* Reinforcement of pre-zygotic isolation and karyotype evolution in *Agrodiaetus* butterflies. *Nature* **436**, 385–389 (2005).
32. Lukhtanov, V. A., Vila, R. & Kandul, N. P. Rearrangement of the *Agrodiaetus dolus* species group (Lepidoptera, Lycaenidae) using a new cytological approach and molecular data. *Insect Syst. Evol.* **37**, 325–334 (2006).
33. Lukhtanov, V. A., Shapoval, N. A., Anokhin, B. A., Saifidinova, A. F. & Kuznetsova, V. G. Homoploid hybrid speciation and genome evolution via chromosome sorting. *Proc. R. Soc. B* **282**(1807), 20150157, doi:10.1098/rspb.2015.0157 (2015).
34. Lukhtanov, V. The blue butterfly *Polyommatus (Plebicula) atlanticus* (Lepidoptera, Lycaenidae) holds the record of the highest number of chromosomes in the non-polyloid eukaryotic organisms. *Comp. Cytogenet.* **9**, 683–690 (2015).
35. Shimabukuro-Dias, C. K., Oliveira, C. & Foresti, F. Cytogenetic analysis of five species of the subfamily Corydoradinae (Teleostei: Siluriformes: Callichthyidae). *Genet. Mol. Biol.* **27**, 549–554 (2004).
36. Zimmerman, E. Karyology, systematics and chromosomal evolution in the rodent genus, *Sigmodon*. *Publ. Museum, Michigan State Univ. Biol. Ser.* **4**, 385–454 (1970).
37. Parededa, M. G. & Novello, A. Chromosome mosaicism: extreme karyotype variation in the genus *Ctenomys* from Uruguay (Rodentia: Ctenomyidae). *Caryologia* **65**, 251–257 (2012).

38. Wang, W. & Lan, H. Rapid and parallel chromosomal number reductions in muntjac deer inferred from mitochondrial DNA phylogeny. *Mol. Biol. Evol.* **17**, 1326–1333 (2000).
39. Chung, K.-S., Hipp, A. L. & Roalson, E. H. Chromosome number evolves independently of genome size in a clade with nonlocalized centromeres (*Carex*: Cyperaceae). *Evolution* **66**, 2708–2722 (2012).
40. Eichler, E. E. & Sankoff, D. Structural dynamics of eukaryotic chromosome evolution. *Science* **301**, 793–797 (2003).
41. Leitch, I. J., Beaulieu, J. M., Chase, M. W., Leitch, A. R. & Fay, M. F. Genome size dynamics and evolution in monocots. *J. Bot.* **2010**, 1–18 (2010).
42. Vershinina, A. O. & Lukhtanov, V. A. Dynamics of chromosome number evolution in the *Agrodiaetus phyllis* species complex (Insecta: Lepidoptera). *Cell Tissue Biol.* **7**, 379–381 (2013).
43. White, M. J. D. *Animal cytology and evolution* (Cambridge University Press, 1973).
44. Pagel, M. Inferring the historical patterns of biological evolution. *Nature* **401**, 877–884 (1999).
45. Blomberg, S. P., Garland, T. & Ives, A. R. Testing for phylogenetic signal in comparative data: behavioral traits are more labile. *Evolution* **57**, 717–745 (2003).
46. Felsenstein, J. Phylogenies and the comparative method. *Amer. Nat.* **125**, 1–15 (1985).
47. Harvey, P. H. & Purvis, A. Comparative methods for explaining adaptations. *Nature* **351**, 619–624 (1991).
48. Harvey, P. H. & Rambaut, A. Comparative analyses for adaptive radiations. *Phil. Trans. R. Soc. Lond. B* **355**, 1599–1605 (2000).
49. Freckleton, R. P., Harvey, P. H. & Pagel, M. Phylogenetic analysis and comparative data: a test and review of evidence. *Am. Nat.* **160**, 712–726 (2002).
50. Butler, M. A. & King, A. A. Phylogenetic comparative analysis: a modeling approach for adaptive evolution. *Am. Nat.* **164**, 683–695 (2004).
51. Hansen, T. F. Stabilizing selection and the comparative analysis of adaptation. *Evolution* **51**, 1341–1351 (1997).
52. Posada, D. & Buckley, T. R. Model selection and model averaging in phylogenetics: advantages of Akaike information criterion and Bayesian approaches over likelihood ratio tests. *Syst. Biol.* **53**, 793–808 (2004).
53. Pagel, M. Modelling the evolution of continuously varying characters on phylogenetic trees: the case of Hominid cranial capacity in *Morphology, Shape and Phylogeny* (ed. MacLeod, N. & Forey, P.L.) 269–286 (CRC Press, 2002).
54. Baker, R. J. & Bickham, J. W. Karyotypic evolution in bats: evidence of extensive and conservative chromosomal evolution in closely related taxa. *Syst. Zool.* **29**, 239–253 (1980).
55. Baker, R. J. & Bickham, J. W. Karyotypic megaevolution by any other name: a response to Marks. *Syst. Zool.* **33**, 339–341 (1984).
56. Bell, D. M. *et al.* Patterns of karyotypic megaevolution in *Reithrodontomys*: evidence from a cytochrome-b phylogenetic hypothesis. *J. Mammal.* **82**, 81–91 (2001).
57. Revell, L. J. & Harmon, L. J. Testing quantitative genetic hypotheses about the evolutionary rate matrix for continuous characters. *Evol. Ecol. Res.* **10**, 311–331 (2008).
58. Nunn, C. L. *The comparative approach in evolutionary anthropology and biology* (University of Chicago Press, 2011).
59. Beaulieu, J. M., Jhwueng, D.-C., Boettiger, C. & O'Meara, B. C. Modeling stabilizing selection: expanding the Ornstein–Uhlenbeck model of adaptive evolution. *Evolution* **66**, 2369–2383 (2012).
60. Rieseberg, L. H. Chromosomal rearrangements and speciation. *Trends Ecol. Evol.* **16**, 351–358 (2001).
61. Solovei, I. *et al.* Nuclear architecture of rod photoreceptor cells adapts to vision in mammalian evolution. *Cell* **137**, 356–368 (2009).
62. Noor, M. A. F., Grams, K. L., Bertucci, L. A. & Reiland, J. Chromosomal inversions and the reproductive isolation of species. *Proc. Natl. Acad. Sci.* **98**, 12084–12088 (2001).
63. Navarro, A. & Barton, N. H. Accumulating postzygotic isolation genes in parapatry: a new twist on chromosomal speciation. *Evolution* **57**, 447–459 (2003).
64. Ayala, F. J. & Coluzzi, M. Chromosome speciation: humans, *Drosophila*, and mosquitoes. *Proc. Nat. Acad. Sci. USA* **102**, 6535–42 (2005).
65. Baker, R. J. & Bickham, J. W. Speciation by monobranchial centric fusions. *Proc. Nat. Acad. Sci. USA* **83**, 8245–8248 (1986).
66. Nagaraju, J. & Jolly, M. S. Interspecific hybrids of *Antheraea roylei* and *A. pernyi* — a cytogenetic reassessment. *Theor. Appl. Genet.* **72**, 269–273 (1986).
67. Dincă, V. *et al.* Reproductive isolation and pattern of genetic differentiation in a cryptic butterfly species complex. *J. Evol. Biol.* **26**, 2095–2106, doi:10.1111/jeb.12211 (2013).
68. Nachman, M. W. & Myers, P. Exceptional chromosomal mutations in a rodent population are not strongly underdominant. *Proc. Nat. Acad. Sci. USA* **86**, 6666–6670 (1989).
69. Veyrunes, F. *et al.* Autosomal and sex chromosome diversity among the African pygmy mice, subgenus *Nannomys* (Murinae; *Mus*). *Chromosome Res.* **12**, 369–382 (2004).
70. Lyapunova, E. A., Bakloushinskaya, I. Y., Saidov, A. S. & Saidov, K. K. Dynamics of chromosome variation in mole voles *Ellobius tancrei* (Mammalia, Rodentia) in Pamiro-Alay in the period from 1982 to 2008. *Russ. J. Genet.* **46**, 566–571 (2010).
71. Wolf, K. W., Ak, K. N. & Marec, F. Kinetic organization of metaphase I bivalents in spermatogenesis of Lepidoptera and Trichoptera species with small chromosome numbers. *Heredity* **79**, 135–143 (1997).
72. Carpenter, J. E., Bloem, S. & Marec, F. Inherited sterility in insects in *Sterile Insect Technique* (eds Dyck, V. A., Hendrichs, J. & Robinson, A. S.) 115–146, doi:10.1007/1-4020-4051-2_5 (Springer, 2005).
73. Mola, L. M. & Papeschi, A. G. Holokinetic chromosomes at a glance. *J. Basic Appl. Genetics* **17**, 17–33 (2006).
74. Bureš, P. & Zedek, F. Holokinetic drive: centromere drive in chromosomes without centromeres. *Evolution* **68**, 2412–2420 (2014).
75. Hall, T. A. BioEdit: a user-friendly biological sequence alignment editor and analysis program for Windows 95/98/NT. *Nucleic acids symposium series* **41**, 95–98 (1999).
76. Egan, A. N. & Crandall, K. A. Incorporating gaps as phylogenetic characters across eight DNA regions: ramifications for North American Psoraleae (Leguminosae). *Mol. Phylogenet. Evol.* **46**, 532–546 (2008).
77. Wiemers, M., Keller, A. & Wolf, M. ITS2 secondary structure improves phylogeny estimation in a radiation of blue butterflies of the subgenus *Agrodiaetus* (Lepidoptera: Lycaenidae: Polyommatus). *BMC Evol. Biol.* **9**, 300, doi:10.1186/1471-2148-9-300 (2009).
78. Darriba, D., Taboada, G. L., Doallo, R. & Posada, D. jModelTest 2: more models, new heuristics and parallel computing. *Nat. Meth.* **9**, 772 (2012).
79. Stamatakis, A. RAxML version 8: a tool for phylogenetic analysis and post-analysis of large phylogenies. *Bioinformatics* **30**, 1312–1313 (2014).
80. Miller, J. R., Koren, S. & Sutton, G. Assembly algorithms for next-generation sequencing data. *Genomics* **95**, 315–27 (2010).
81. Stamatakis, A., Hoover, P. & Rougemont, J. A rapid bootstrap algorithm for the RAxML web servers. *Syst. Biol.* **57**, 758–771 (2008).
82. Ronquist, F. *et al.* MrBayes 3.2: Efficient Bayesian phylogenetic inference and model choice across a large model space. *Syst. Biol.* **61**, 539–542 (2012).
83. Nylander, J. A. A., Wilgenbusch, J. C., Warren, D. L. & Swofford, D. L. AWTY (are we there yet?): A system for graphical exploration of MCMC convergence in Bayesian phylogenetics. *Bioinformatics* **24**, 581–583 (2008).
84. Wiemers, M. Chromosome differentiation and the radiation of the butterfly subgenus *Agrodiaetus* (Lepidoptera: Lycaenidae: *Polyommatus*) — a molecular phylogenetic approach. (Rheinischen Friedrich-Wilhelms-Universität Bonn, 2003).
85. Lukhtanov, V. A., Shapoval, N. A. & Dantchenko, V. A. *Agrodiaetus shahkuhensis* sp. n. (Lepidoptera: Lycaenidae), a cryptic species from Iran discovered by using molecular and chromosomal markers. *Comp. Cytogenet.* **2**, 94–114 (2008).

86. Wiemers, M. & Fiedler, K. Does the DNA barcoding gap exist? – a case study in blue butterflies (Lepidoptera: Lycaenidae). *Front. Zool.* **4**, 8 (2007).
87. Vershinina, A. & Lukhtanov, V. Geographical distribution of the cryptic species *Agrodiaetus alcestis alcestis*, *A. alcestis karacetinae* and *A. demavendi* (Lepidoptera: Lycaenidae) revealed by cytogenetic analysis. *Comp. Cytogenet.* **4**, 1–11 (2010).
88. Lukhtanov, V. A., Shapoval, N. A. & Dantchenko, A. V. Taxonomic position of several enigmatic *Polyommatus* (*Agrodiaetus*) species (Lepidoptera, Lycaenidae) from Central and Eastern Iran: insights from molecular and chromosomal data. *Comp. Cytogenet.* **8**, 313–322 (2014).
89. Lukhtanov, V. A., Dantchenko, A. V., Vishnevskaya, M. S. & Saifitdinova, A. F. Detecting cryptic species in sympatry and allopatry: analysis of hidden diversity in *Polyommatus* (*Agrodiaetus*) butterflies (Lepidoptera: Lycaenidae). *Biol. J. Linn. Soc.* **116**, 468–485 (2015).
90. Lukhtanov, V. A. & Tikhonov, V. V. Chromosomal and molecular evidence for presence of *Polyommatus* (*Agrodiaetus*) *poseidon* (Lepidoptera, Lycaenidae) in Caucasus region. *Comp. Cytogenet.* **9**, 249–255 (2015).
91. Vishnevskaya, M. S., Saifitdinova, A. F. & Lukhtanov, V. A. Karyosystematics and molecular taxonomy of the anomalous blue butterflies (Lepidoptera, Lycaenidae) from the Balkan Peninsula. *Comp. Cytogenet.* **10**(5), 1–85, doi:10.3897/CompCytogen.v10i5.10944 (2016).
92. Pagel, M. & Lutzoni, F. Accounting for phylogenetic uncertainty in comparative studies of evolution and adaptation in *Biological Evolution and Statistical Physics* (eds Laessig, M. & Valleriani, A.) 148–161 (Springer Verlag, 2002).
93. Paradis, E., Claude, J. & Strimmer, K. APE: Analyses of phylogenetics and evolution in R language. *Bioinformatics* **20**, 289–290 (2004).
94. Harmon, L. J., Weir, J. T., Brock, C. D., Glor, R. E. & Challenger, W. GEIGER: investigating evolutionary radiations. *Bioinformatics* **24**, 129–131 (2008).
95. Revell, L. J. phytools: an R package for phylogenetic comparative biology (and other things). *Methods Ecol. Evol.* **3**, 217–223 (2012).

Acknowledgements

We thank Alexander Dantchenko and Nazar Shapoval for provided samples and sequences. We are also very grateful to Valentina Kuznetsova for laboratory facilities and valuable discussion. The financial support for this study was provided by the grant N 14-14-00541 from the Russian Science Foundation to the Zoological Institute of the Russian Academy of Sciences. The work was partially performed using equipment of the ‘Chromas’ Core Facility, Centre for Molecular and Cell Technologies and Department of Entomology of St. Petersburg State University. A part of this equipment was purchased with support of the St. Petersburg University grant 1.40.490.2017.

Author Contributions

V.L. and A.V. designed research and acquired data, A.V. synthesized data and performed computational procedures, V.L. interpreted data, A.V. and V.L. wrote the paper.

Additional Information

Supplementary information accompanies this paper at doi:10.1038/s41598-017-08525-6

Competing Interests: The authors declare that they have no competing interests.

Publisher's note: Springer Nature remains neutral with regard to jurisdictional claims in published maps and institutional affiliations.



Open Access This article is licensed under a Creative Commons Attribution 4.0 International License, which permits use, sharing, adaptation, distribution and reproduction in any medium or format, as long as you give appropriate credit to the original author(s) and the source, provide a link to the Creative Commons license, and indicate if changes were made. The images or other third party material in this article are included in the article's Creative Commons license, unless indicated otherwise in a credit line to the material. If material is not included in the article's Creative Commons license and your intended use is not permitted by statutory regulation or exceeds the permitted use, you will need to obtain permission directly from the copyright holder. To view a copy of this license, visit <http://creativecommons.org/licenses/by/4.0/>.

© The Author(s) 2017