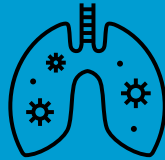


# Extracellular traps are prevalent in children with non-cystic fibrosis bronchiectasis

## METHODS

A cross-sectional study of **89 children** with **bronchiectasis**



Using **Romanowsky-stained** bronchoalveolar lavage (BAL) slides



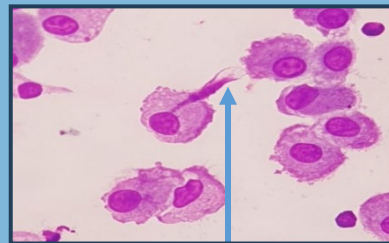
Examined for **extracellular traps (ETs)** using **light microscopy**



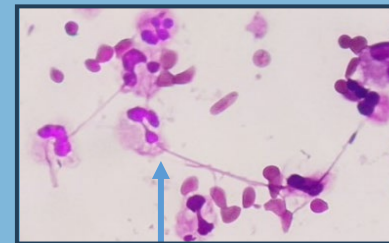
## RESULTS

**Extracellular traps** were present in **79%** of children with bronchiectasis

**Macrophage ETs (METs)** and **Neutrophil ETs (NETs)** were the **most commonly detected** types.



MET



NET

## SUMMARY

**Romanowsky-stained BAL slides** can be used to **detect ETs** in children with bronchiectasis.



This is a **cost-effective method** to directly **detect ETs** in paediatric respiratory specimens.

\$\$\$