



Obesity and its impact on COVID-19

Angélica J. M. de Leeuw¹ · Maureen A. M. Oude Luttikhuis¹ · Annemarijn C. Wellen¹ · Christine Müller² · Cornelis F. Calkhoven²

Received: 21 January 2021 / Revised: 22 March 2021 / Accepted: 30 March 2021 / Published online: 6 April 2021
© The Author(s) 2021

Abstract

The severe acute respiratory syndrome-coronavirus-2 (SARS-CoV-2) pandemic has proven a challenge to healthcare systems since its first appearance in late 2019. The global spread and devastating effects of coronavirus disease 2019 (COVID-19) on patients have resulted in countless studies on risk factors and disease progression. Overweight and obesity emerged as one of the major risk factors for developing severe COVID-19. Here we review the biology of coronavirus infections in relation to obesity. In particular, we review literature about the impact of adiposity-related systemic inflammation on the COVID-19 disease severity, involving cytokine, chemokine, leptin, and growth hormone signaling, and we discuss the involvement of hyperactivation of the renin-angiotensin-aldosterone system (RAAS). Due to the sheer number of publications on COVID-19, we cannot be completed, and therefore, we apologize for all the publications that we do not cite.

Keywords Obesity · SARS-CoV-2 · COVID-19 · Immunopathology · RAAS

The obesity pandemic

The worldwide prevalence of obesity increased 3-fold between 1975 and 2016, with 13% of adults being obese and 39% being overweight in 2016 (source: World Health Organization (WHO), <https://www.who.int>). If this incline continues, it is estimated that in 2030, 38% of the population worldwide will be overweight and 20% will be obese [1]. Obesity is defined as a too high body weight compared to height. The WHO distinguishes three groups: class I (BMI 30.034.9 kg/m²), class II (35.0–39.9 kg/m²; severe obese), and class III (BMI >40.0 kg/m²; morbid obese) (<https://www.who.int>).

Excess energy from the diet is stored as fat in the white adipose tissue (WAT), distributed widely throughout the

body. WAT is subdivided in two major categories; visceral fat depots (around abdominal viscera in mesentery and omentum) and subcutaneous fat depots (under the skin). In addition to fat-storing adipocytes, WAT contains immune cells. Together, they affect whole-body homeostasis through metabolic, endocrine, and immune functions. Chronic overnutrition and resulting obesity cause severe derangements in these functions, associated with increased leptin secretion, local inflammation, and release of inflammatory mediators that may negatively affect the function of other tissues [2]. This low-grade inflammatory state is a major risk factor for developing diseases such as diabetes mellitus type 2, hypertension, cardiovascular diseases, and fatty liver disease [2–5]. The health consequences of obesity are linked to the side of fat storage with the accumulation of visceral fat being associated with more adverse health outcomes, inflammation, and metabolic syndrome, as opposed to the healthier fat accumulation in the subcutaneous depots [6, 7]. Excessive fat in WAT is stored largely without the number of adipocytes increasing, resulting in adipocyte hypertrophy, which is associated with reduced oxygen supply and hypoxia, and an increase in macrophage infiltration and inflammation [8–10]. Since the storage capacity of the hypertrophic cells is limited, fat starts to accumulate in ectopic tissues such as the liver, heart, and skeletal muscles [8]. This dyslipidemia further promotes metabolic disorders. However, an exception to this scenario exists as individuals

Angélica J. M. de Leeuw, Maureen A. M. Oude Luttikhuis and Annemarijn C. Wellen contributed equally to this work.

✉ Cornelis F. Calkhoven
c.f.calkhoven@umcg.nl

¹ University Medical Center Groningen (UMCG), University of Groningen, 9700, AD Groningen, The Netherlands

² European Research Institute for the Biology of Ageing (ERIBA), University Medical Center Groningen, University of Groningen, 9700, AD Groningen, The Netherlands

who are chronically obese but stay—at least transiently—metabolically healthy. Evidence from mice and a few human studies suggests that storing a surplus of nutrients as fat through adipocyte hyperplasia (an increasing number) is associated with metabolic health [11]. The fat storage can be distributed over more fat cells; the individual fat cells stay smaller, are metabolically more active, and are less inflamed [6]. So far, little is known about the underlying molecular mechanisms driving fat storage in either the hypertrophic or the hyperplastic direction. An exception is the function of the metabolic transcription factor C/EBP β which was linked to hypertrophic versus hyperplastic fat accumulation in mice with a high-fat diet [12]. Such regulators may be attractive targets to therapeutically prevent metabolic and immunological complications associated with obesity.

The SARS-CoV-2/COVID-19 pandemic

In December 2019, health authorities in China reported an outbreak of pneumonia of unknown cause in Wuhan, Hubei Province, China. The first reported cases were linked to a local seafood market in Wuhan City, shortly after the causative coronavirus was isolated from lower respiratory tract samples of pneumonia patients. The virus was named severe acute respiratory syndrome coronavirus-2 (SARS-CoV-2), and the disease it causes was called Coronavirus Disease 2019 (COVID-19). Human-to-human transmission is well established in SARS-CoV-2 and the virus is mainly transmitted through respiratory droplets and direct contact. Infected patients may be asymptomatic or show symptoms such as high fever, chills, loss of smell and taste, cough, shortness of breath, or difficulty in breathing. The most reported symptoms at the onset of disease are fever (87.9%), cough (67.7%), and fatigue (38.1%) [13–15]. The respiratory symptoms can be mild and consist of dry cough, shortness of breath, or rhinitis. In the more severe COVID-19 cases, these symptoms can progress to bilateral pneumonia and acute respiratory distress syndrome (ARDS). Furthermore, multi-organ dysfunction including acute cardiac and kidney injuries, arrhythmias, gastrointestinal, and liver function abnormalities, and thromboembolic complications have been documented in infected patients. Management of severe disease progression usually requires admission to the intensive care unit (ICU) and is associated with high mortality of ~30–40% [16–18]. The viral incubation period ranges from 2–14 days with an average of 5.2 days [13]. The diagnostic method of choice is the detection of viral genetic material in a nasopharyngeal swab or sputum sample using polymerase chain reaction (PCR), more recently supplemented with detection of SARS-CoV-2 antigens with antibody-based tests. An additional diagnostic tool is a computer tomography (CT) scan of the chest which shows ground-glass opacities, interstitial infiltration, or multiple patchy

consolidations in both lungs [19]. Due to globalization, the virus was able to spread rapidly worldwide and on March 11, 2020, the WHO officially declared COVID-19 a pandemic. As of March 2021, COVID-19 caused more than 120 million reported infected cases and around 2.7 million reported deaths worldwide (<https://www.who.int>). Although no effective antiviral drugs exist, vaccines against SARS-CoV-2 are now available and world-wide vaccination programs are expected to be completed during 2021.

The biology of coronaviruses

The family of coronaviruses consists of two subfamilies; the Totovirinae and the Coronavirinae [20]. The Totovirinae mainly cause disease in terrestrial and aquatic animals. The Coronavirinae, in particular the genus of betacoronaviruses, cause a wide variety of diseases in mammals, differentiating from the common cold to more severe respiratory diseases like SARS and MERS in humans [21]. Coronaviruses share a couple of important features contributing to transmission, viral replication, and viral immunopathology [22]. Coronaviruses have a non-segmented, single-stranded positive-sense RNA-genome, and with approximately 30,000 bases in length, they are the largest known mature RNA-molecules in biology [23, 24]. The virus genome codes for four main structural proteins; the spike (S), nucleocapsid (N), membrane (M), and the envelope (E) proteins as well as for other non-structural proteins required in viral replication [23]. Of the structural proteins, the S-protein is a critical surface-located trimeric glycoprotein which mediates attachment to host cell receptors and viral entry [22, 25–27]. The N-protein's function is to package the viral RNA-genome into a ribonucleoprotein complex [28]. The M-protein is the most abundant protein and shapes the viral envelope [29]. The smallest structural protein is the E-protein which has important roles in virus production and maturation [30, 31] (Fig. 1).

Both SARS-CoV and SARS-CoV-2 enter host cells by binding to Angiotensin-converting enzyme 2 (ACE2) through S-proteins on their surface [22, 32], yet SARS-CoV-2 binds ACE2 with a considerably higher affinity than SARS-CoV [33]. Based on inter-species differences in the ACE2 gene and modeling of S-protein ACE2-complex structure predictions, SARS-CoV-2 is predicted to infect a broad range of animals, excluding some fish, birds, and reptiles [34]. The S-protein contains two subunits, S1 and S2. The first step of virus entry is binding of the S1 subunit, via its N-terminal portion, into a hydrophobic pocket in ACE2. Next, the S-protein is cleaved by the host type II transmembrane serine protease TMPRSS2 and possibly also by lysosomal cathepsins like furin [35]. The cleavage causes the S1 and S2 subunits to stick to each other, inducing dissociation of the S1 subunit with ACE2 and a change in S2 structure causing a

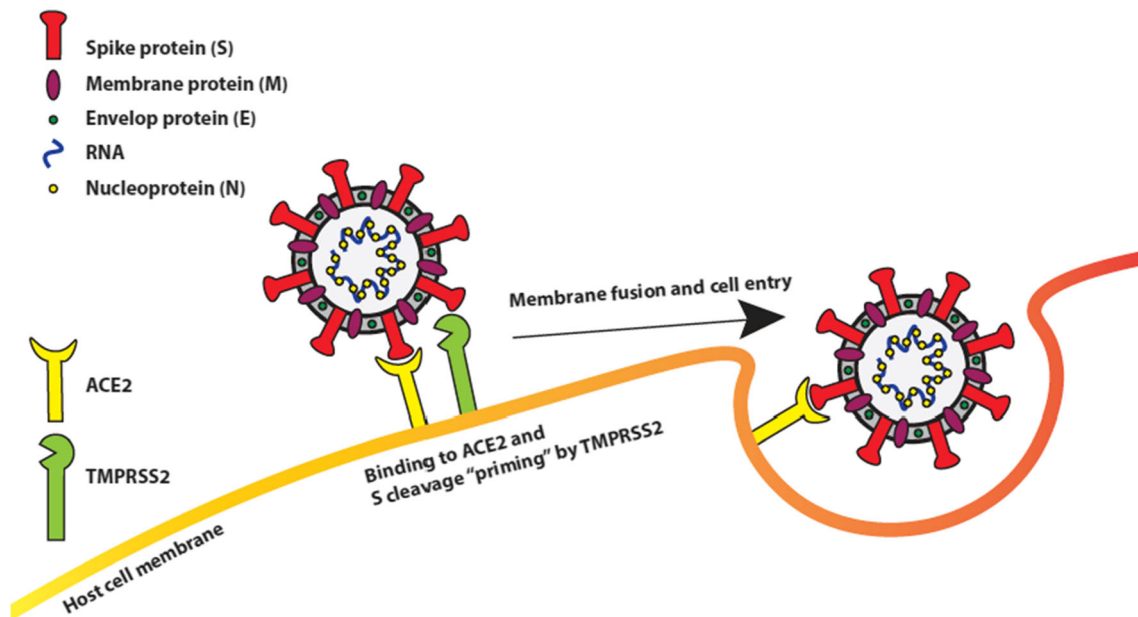


Fig. 1 SARS-CoV-2 and cellular components in viral infection. The spike (S), nucleocapsid (N), membrane (M), and the envelope (E) proteins make up the main structural proteins of SARS-CoV-2. The cellular angiotensin-converting enzyme 2 (ACE2) exopeptidase acts as a receptor

stable post-fusion state. This process, called priming, facilitates the fusion between the viral and cellular membrane and the entry of the virus into the cell [36]. The S-proteins of SARS-CoV and SARS-CoV-2 differ by approximately 380 amino acids (the viral genomes show 79.6% similarity) [37], including five to six vital amino acids which cause 10 to 20-fold higher binding affinity of SARS-CoV-2 for ACE2. The stronger SARS-CoV-2 S-protein-ACE2 interaction is responsible for the high pathogenic nature of COVID-19 [16, 17, 38, 39]. ACE2 is widely expressed throughout the body with a high expression in the lungs, intestines, and adipocytes in WAT [40]. Some studies suggest the ACE2 receptor is upregulated by obesity, cardiovascular disease, and smoking [41, 42], while other studies suggest cellular levels of ACE2 are the same in adipocytes of obese and non-obese individuals [43]. Nonetheless, experiments in rats have shown upregulation of ACE2 in adipose tissue in response to a high-fat diet [44]. Taking into account the much higher volume of adipose tissue, it is reasonable to assume increased quantities of ACE2 in adipose tissues of people with obesity.

During infection with SARS-CoV-2, the S-protein-ACE2 complex is internalized in the cell resulting in a loss of functional, membrane-bound ACE2. As we will discuss below, in a normal situation, ACE2 has anti-inflammatory effects and is considered to act protective in case of acute respiratory distress syndrome (ARDS). This protective mechanism is compromised through ACE2 receptor downregulation in SARS-CoV-2, resulting in more prominent ARDS [38].

Since late 2020, mutations of SARS-CoV-2 are starting to emerge. A few variants first spread rapidly among populations

for SARS-CoV-2 spike protein (S) binding. Subsequent cleavage of S by the cellular transmembrane serine protease 2 (TMPRSS2) results in membrane fusion of the virus and its cell entry

in Great Britain (lineage B.1.1.7), South Africa (lineage 501Y.V2), and Brazil (lineages B.1.1.28.P1/P2), of whom they thank their common names [45]. These now worldwide present variants mainly contain mutations in the spike (S) protein that affect the ACE2 binding domain and other parts of the protein. It has been proposed that these mutations result in increased ACE2 binding and internalization of the virus leading to higher transmission rates of all three SARS-CoV-2 variants [46]. Moreover, infection with the British variant is associated with an increased risk of hospitalization and mortality in the UK and Danish populations [47–49]. In addition, mutations found in the South African and the Brazilian variant may affect the recognition and neutralization by antibodies and thereby promote immune evasion, which could result in higher re-infection rates as has been suggested for the Brazilian variant [50–52]. How these mutations affect people with obesity is not yet clear, and awaits completion of studies currently pursued.

COVID-19 immunopathology

In 10–20% of COVID-19 patients, a second more severe phase of the disease develops typically 7 to 14 days post-infection. This phase is characterized by respiratory failure and acute respiratory distress syndrome (ARDS), as well as multi-organ failure, which ultimately can lead to death [53–55]. Deregulated innate and adaptive immune responses are believed to be responsible for the life-threatening development of the disease. The most prominent feature is a hyper-

inflammatory response with strongly increased inflammatory markers in the blood of patients, such as C-reactive protein (CRP), ferritin, inflammatory cytokines, particularly Interleukin (IL)-6, IL-1 β , tumor necrosis factor α (TNF- α), and chemokines like CCL2, CCL3, and CCL5 [56–62]. An increased accumulation of macrophages and other phagocytic immune cells was found in the lungs of patients with severe disease [63, 64]. Studies suggest that activated macrophages provoke further attraction of innate immune cells through the release of inflammatory cytokines, which amplifies the secretion of inflammatory cytokines causing failure to terminate the inflammatory response, a condition termed cytokine storm syndrome (CSS) [65, 66]. High concentrations of inflammatory cytokines and chemokines can induce apoptosis of epithelial and endothelial cells of the lungs and leakage of vasculature which ultimately results in severe lung damage observed in patients with ARDS [65]. Effective treatment with anti-inflammatory drugs like dexamethasone or hydrocortisone (<https://www.recoverytrial.net>) [67, 68] or the anti-IL-6 receptor antibody tocilizumab (<https://www.remapcap.org>) [69–71] shows that the uncontrolled inflammatory response is an important contributor to severe disease progression. Furthermore, a strong increase in numbers of immature neutrophil precursors and the occurrence of dysfunctional mature neutrophils have been observed in the blood of patients with severe COVID-19 disease probably reflecting a defect in myelopoiesis [72, 73]. If and how these cells contribute to the health deterioration of COVID-19 patients is currently unclear. Both in mild and severe COVID-19 cases, a decrease of lymphocytes in the blood has been observed, particularly of natural killer (NK) cells and T-cells. Within the T-cell compartment, CD8+ cytotoxic T-cells seem to be more strongly affected [74]. In patients with severe disease progression, this lymphopenia is more pronounced. In addition, molecular signs of T-cell exhaustion are detectable particularly in severe cases suggesting that anti-viral T-cell functioning is compromised [75, 76]. It is not completely understood what underlying causes are responsible for lower numbers and exhaustion of T-cells in severe disease cases. It has been proposed that COVID-19 infection can induce apoptosis signaling pathways in lymphocytes [77]. In addition, macrophages induce lymphocyte apoptosis through Fas/Fas ligand interactions or lymphocyte necrosis through high levels of secreted IL-6 [78]. Furthermore, it has been suggested interferon (INF) type I response is impaired in patients with severe disease progression but not in patients with mild symptoms. Type I interferons are secreted from infected cells, pathogen-sensing macrophages, and dendritic cells, and induce interferon-stimulated genes (ISGs) in the target cells mediating antiviral response. Thereby, type I interferons activate both the innate and adaptive immune system; they furthermore enhance antigen presentation and induce a defense mechanism in cells neighboring the infection site to limit viral spread. INF- α

levels in circulating white blood cells were found to be strongly decreased particularly in severe COVID-19 cases similar to the INF response gene signature, suggesting that mounting of an anti-viral response is dampened in severe cases [79]. However, other data contradict these findings showing that patients with severe disease progression can have a functional INF type I response [62, 80, 81]. It was even suggested the INF I response could increase the inflammatory state in patients with severe COVID-19 [82]. Thus, it is not clear if and to which extent failure to mount an INF type I response contributes to the severe progression of the disease.

Obesity and COVID-19

Soon after the COVID-19 outbreak, worldwide observations revealed 70–90% of SARS-CoV-2 infected patients suffering from respiratory failure who were admitted to the ICU are overweight [83–85]. Since then, multiple studies revealed a strong correlation between ICU admission and BMI, independent of other (metabolic) risk factors. A Dutch study showed 90% of the SARS-CoV-2 infected patients with respiratory failure had a BMI higher than 25 kg/m² and a mean BMI of 30 kg/m² and that the severity of the disease increases significantly with BMI [86]. Concurrently, COVID-19 patients requiring mechanical ventilation in a Seattle-based cohort had a mean BMI of 33 kg/m² [87]. A Southern California-based study linked BMI >40 to greater relative risk most strikingly among patients aged 60 years or younger and in men. [88]. An international multicenter retrospective cohort study revealed a linear association between BMI and the need for invasive mechanical ventilation (IMV) for critically ill COVID-19 patients, which was more pronounced in younger females and independent of other metabolic risk factors. In addition, a non-linear significant association between BMI and mortality was observed in obesity class III (≥ 40 kg/m²) [89].

Altogether, the studies show that progression of obesity to morbid obesity increases the risk for mechanical ventilation and admission to the ICU by more than 2-fold and is significantly linked to being male and having a high BMI. Obesity is also known as an independent risk factor for disease severity and mortality in the 2009 H1N1 influenza pandemic [90, 91]. Longer ICU length of stay was observed in infected obese individuals even if they did not suffer from chronic conditions which would have increased the risk of influenza-related complications [92].

Mechanically, obesity impairs pulmonary function characterized by a decline in expiratory reserve volume, functional capacity, and respiratory system compliance. Abdominal obesity jeopardizes these functions even more in the supine position because of decreased diaphragmatic excursion [93]. Nonetheless, the so-called obesity paradox is a phenomenon of reduced mortality with septic shock or sepsis and ARDS in

patients who are overweight or obese [94, 95]. A possible explanation for this phenomenon is the obesity-related chronic pro-inflammatory milieu functions as a protective environment limiting a second, more aggressive infection, such as sepsis or ventilation-induced infections [96]. In the case of COVID-19, however, a high BMI is related to a higher risk of developing respiratory failure and thus the need for mechanical ventilation [86, 87]. Normally, obese patients are admitted to the ICU with mechanical hypoventilation as a result of hypercapnic respiratory failure, but in SARS-CoV-2 infection, the clinical presentation is hypoxic respiratory failure. These findings suggest COVID-19 elicits an unusual response. Therefore, even though obesity-associated comorbidities contribute indirectly to a severe disease course, it seems there is an independent association between obesity and COVID-19 severity. Several recent studies suggest that the accumulation of visceral fat and immunological alterations associated with obesity may be involved in developing a more severe disease course.

Obesity and the innate immune system

Hypertrophic adipocytes, in particular in the visceral WAT, recruit polarized macrophages that induce low-grade systemic inflammation through the production of excessive amounts of inflammatory cytokines, of which IL-6, TNF- α , IL-1, IL-10, and MCP-1 are the most important (Fig. 2) [90, 97]. Infection with SARS-CoV-2 may provoke a cytokine storm, characterized by a similar set of cytokines (IL-6, TNF- α , IL-2, IL-7, INF- γ , MCP-1) [90, 97]. The cytokine IL-6, in particular, appears to be associated with a more severe disease course, as higher levels of IL-6 were observed in non-survivors compared to survivors of COVID-19 [97]. Adipose tissue can act as a reservoir for the production and secretion of IL-6 and hence amplify the cytokine storm and contribute to higher mortality in COVID-19 [98]. In addition, the high cytokine levels secreted from hypertrophic fat cells into the bloodstream, including IL-6, counteract the termination of the anti-viral immune response in the lungs of and thereby promote a cytokine storm in COVID-19 patients with a severe disease development.

Obesity and the adaptive immune system

In addition to the innate immune system, obesity also affects the adaptive immune system. The activation and function of CD4+ and CD8+ T-cells are diminished in people with overweight or obesity. Metabolic changes in T-cells associated with an impaired memory T-cell response were observed, which makes people with obesity more prone to reinfection [100]. Moreover, obese mice infected with H1N1 influenza

virus showed a diminished number of bone marrow resident B-cells, normally acting as the primary memory cells responsible for antibody production [101, 102]. SARS-CoV-2 infection shares several features of an altered adaptive immune response with obesity. As described above, SARS-CoV-2 infection also causes a significant reduction in circulating lymphocytes and T-cells. Lymphopenia was noted in over 80% of infected patients. Especially decreased numbers of CD4+ and CD8+ T-cells were observed in peripheral blood of COVID-19 patients and were markers for a more severe disease course [103]. The depletion of both CD4+ and CD8+ cells enables a macrophage and neutrophil predominance in the immune response [104]. In contrast, specific T-helper1 (Th1) and T-helper17 (Th17) cells seem to be activated in SARS-CoV-2 and contribute to increased inflammation [105]. Th1 and Th17 cells have pro-inflammatory effects by inducing fibrosis and insulin resistance and are abundantly present in the adipose tissue of people with obesity [106]. It seems likely that the imbalanced immune system connected to obesity exacerbates the immunological derangements of the COVID-19 infection.

The renin-angiotensin-aldosterone system

The SARS-CoV-2 entry receptor ACE2 is a key component of the renin-angiotensin-aldosterone system (RAAS, also called renin-angiotensin system (RAS)), which plays an essential role in maintaining blood pressure, and liquid and electrolyte homeostasis. The RAAS cascade (Fig. 3) begins with angiotensinogen (AGT) produced by the liver and its cleavage/processing into angiotensin I (Ang I) by renin produced by the kidneys. Subsequently, Ang I is cleaved by angiotensin-converting-enzyme (ACE) to form angiotensin II (Ang II), which binds to Ang II type 1 receptor (AT1R) (and to a lesser extent to AT2R). The ACE/AngII/AT1R axis serves as a potent vasoconstrictor, stimulates aldosterone release, and regulates renal sodium reabsorption and potassium excretion. In addition, the ACE/AngII/AT1R axis also has a potent inflammatory and pro-fibrotic role and triggers important adverse reactions such as myocardial hypertrophy and dysfunction, endothelial dysfunction, obesity-associated hypertension, interstitial fibrosis, and oxidative stress [38, 39, 107, 108]. ACE2 is a central factor in the negative control of the Ang I/ACE/Ang II/AT1R axis by processing Ang II into Ang 1-7, and in addition by direct conversion of Ang I into Ang 1-9, which is subsequently processed into Ang 1-7 by ACE or other peptidases. Ang 1-7 binds to the mitochondrial assembly receptor (MasR), which results in vasodilatation, anti-inflammatory, and anti-fibrotic effects. Hence, ACE2 is important for maintaining balance in the RAAS, and higher levels of ACE2 can induce a shift from the inflammatory ACE/AngII/AT1R axis towards the protective ACE2/Ang1-7/Mas axis [107].

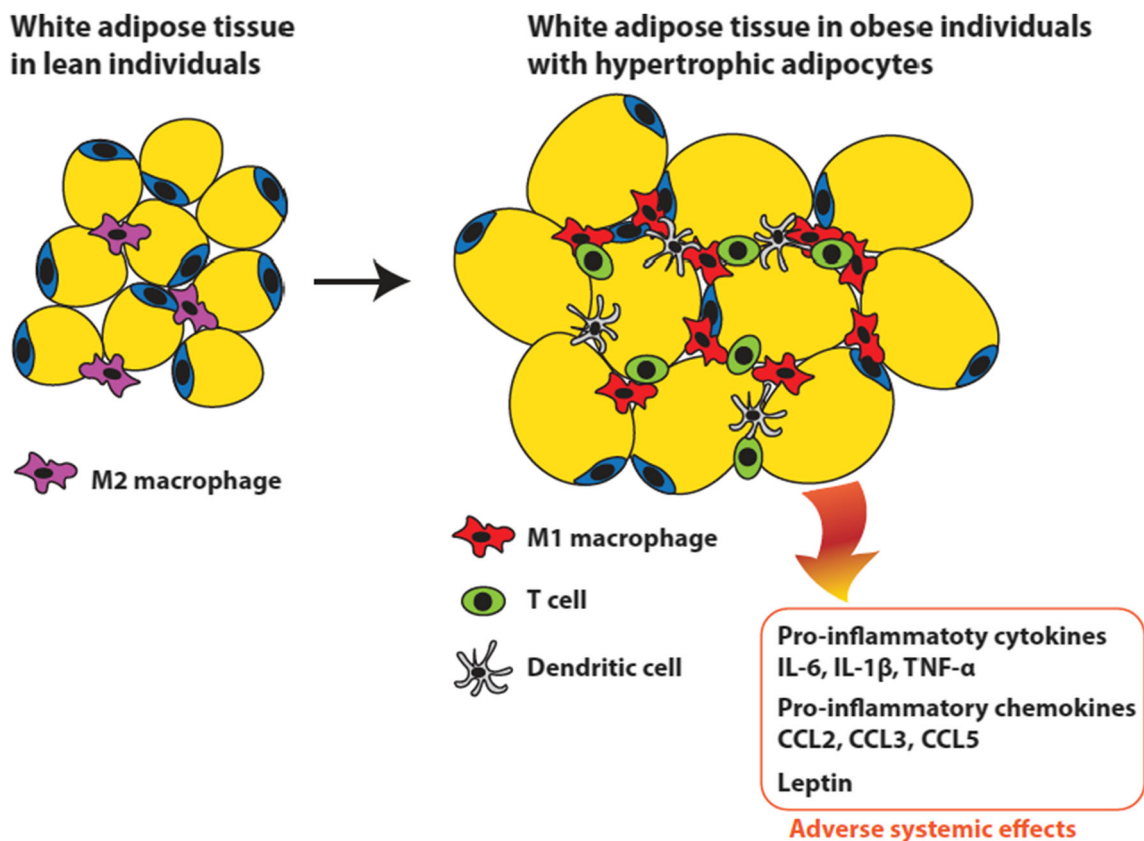


Fig. 2 Adverse systemic effects of fat accumulation in hypertrophic adipocytes. In obese individuals, a surplus of energy is stored as fat in hypertrophic adipocytes in the WAT. The hypertrophic fat cells secrete chemokines causing infiltration by immune cells and polarization of resident macrophages to the pro-inflammatory M1 type, resulting in

elevated secretion of pro-inflammatory cytokines. In addition, high leptin secretion associated with leptin resistance in obese individuals further contributes to the inflammatory phenotype. Together, these processes elicit adverse systemic pro-inflammatory effects that aggravate COVID-19 symptoms. Figure based on Fig. 2 in [99]

ACE2 is highly expressed by alveolar type II pneumocytes, whose function is to produce surfactant, maintain self-renewal, and exert immunoregulatory functions. When a cell is infected by SARS-CoV-2, the S-protein-ACE2 interaction and subsequent membrane fusion lead to internalization of the virus but also of ACE2 and thus result in a decrease in functional ACE2. Less available ACE2 means less Ang II is converted into Ang 1-7. This enhances the ACE/AngII/AT1R axis and its adverse effects and may contribute to pulmonary inflammation and coagulation in COVID-19 disease. Accordingly, the plasma levels of Ang II are markedly elevated in SARS-CoV-2 infected patients and associate linearly to viral load and lung injury [109]. Typically seen in lungs of COVID-19 patients is infiltration of interstitial mononuclear cells such as macrophages and monocytes and chronic inflammatory infiltrates [38, 110] that are believed to contribute to lung damage (see paragraph: COVID-19 immunopathology). This is consistent with the fact that downregulation of ACE2 enhances the adhesion of monocytes and neutrophils to endothelial and mesangial cells through higher Ang II levels [111]. The disturbed balance of the ACE/AngII/AT1R axis in COVID-19 patients might also contribute to the

thromboembolic complications often seen in these patients. ACE2 function activates the fibrinolysis inducing plasminogen activator (tPA) [112] while AngII through AT1R stimulates the release of plasminogen activator inhibitor-1 (PAI-1) from endothelial cells that counteracts tPA function and therefore acts prothrombotic [113–115]. Thus, the lower ACE2 and elevated AngII function seen in COVID-19 patients probably shift the tPA/PAI-1 balance towards a prothrombotic state [116]. The connection between the ACE/AngII/AT1R axis and the course of COVID-19 is further supported by the finding that patients with variable degree of ACE2 deficiency associated with, i.e., older age, hypertension, diabetes, cardiovascular disease, seem to develop a more severe disease [39]. Furthermore, the ACE/AngII/AT1R axis is linked with cardiovascular disease, diabetes, and hypertension, which are all associated with higher mortality in COVID-19 [33, 42].

The RAAS pathway is interconnected with the Kallikrein-Kinin-System (KKS), the latter also being involved in inflammatory and thromboembolic disorders [117, 118]. There is some evidence and speculation in the literature suggesting that disturbances due to ACE2 deficiency caused by SARS-CoV-2 infection could be involved in inflammatory and

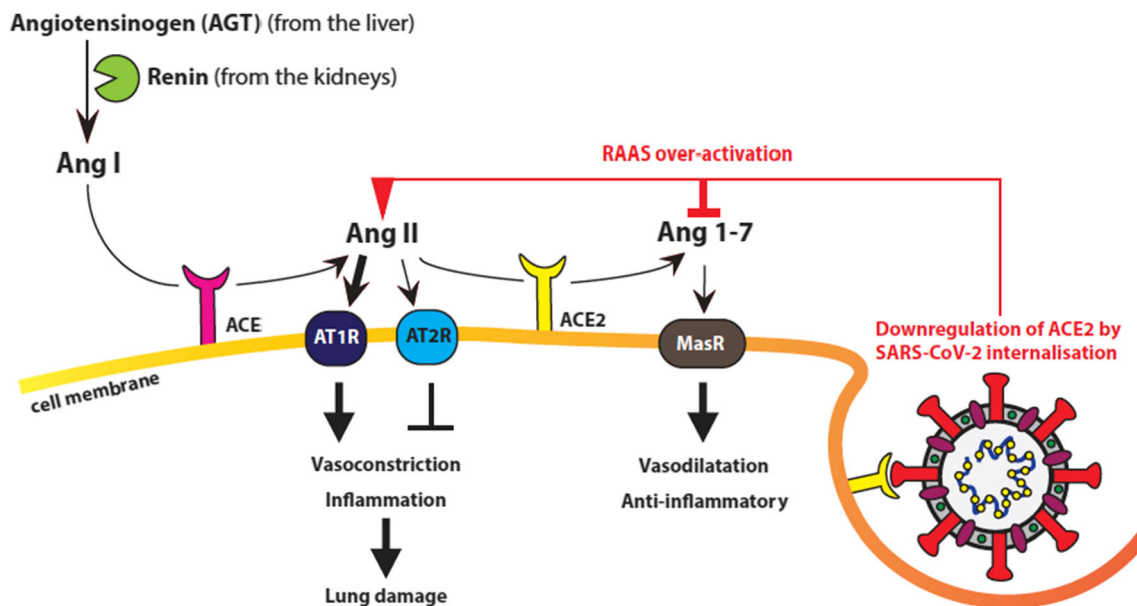


Fig. 3 Graphic representation of the RAAS system. Angiotensinogen (AGT) produced by the liver is processed into angiotensin I (Ang I) by renin produced by the kidneys. Ang I is cleaved by angiotensin-converting-enzyme (ACE) to form angiotensin II (Ang II), which binds to Ang II type 1 receptor (AT1R) and to a lesser extent to AT2R. The ACE/AngII/AT1R axis serves as a vasoconstrictor and has potent inflammatory and pro-fibrotic roles triggering lung endothelial dysfunction.

thromboembolic risks of COVID-19 [113]. The KKS consists of the coagulation factor XII (FXII), Prekallikrein (PK), and high molecular weight kininogen (HK). Its activation results in the generation of Bradykinin (BK) that has anti-vasodilating function [119]. BK can be further metabolized to des-Arg⁹-bradykinin (DABK) which is an important pro-inflammatory mediator through activation of a G protein-coupled receptor B1. DABK is also present on airway epithelial cells and it has been suggested that ACE2 cleaves and thereby inactivates DABK which contributes to the anti-inflammatory function of ACE2 [119]. Therefore, the COVID-19 induced ACE2 downregulation probably boosts inflammation via both AngII and DABK.

The RAAS system also plays a major role in the chronic inflammatory state observed in obesity.

White adipose tissue produces the major components of the RAAS-pathway locally and their expression strongly increases upon obesity [120–122]. In obese individuals, adipose tissue is actually the most prominent tissue in the body that produces Ang II [123–125]. Ang II is considered to be a major pro-inflammatory adipokine linked to obesity, inflammation, and insulin resistance [120, 123, 126, 127]. It has been shown that Ang II induces the polarization of macrophages towards, pro-inflammatory M1-type macrophages that are involved in RAAS-related disturbances in obese individuals. When they infiltrate in the adipose tissue in response to elevated Ang II and secrete pro-inflammatory cytokines, they contribute to disturbed adipocyte function but also to systemic

ACE2 negatively controls the Ang I/ACE/Ang II/AT1R axis by processing Ang II into Ang 1-7. Ang 1-7 binds to the mitochondrial assembly receptor (MasR) receptor, which results in vasodilation and has anti-inflammatory and anti-fibrotic effects. Upon infection by SARS-CoV-2 ACE2 is internalized together with the virus resulting in decreased levels of functional ACE2 and in overactivation of the detrimental Ang I/ACE/Ang II/AT1R axis

inflammation [128–130]. Mice AGT overexpression in adipose tissue results in elevated Ang II levels and in increased adipose and systemic inflammation [123, 124]. On the other hand, inactivation of AGT resulted in reduced infiltration of adipose tissues by macrophages, reduced inflammation, and enhanced metabolic activity [131]. In obese, diabetic mice, Ang II blockers lowered systolic blood pressure, and also inhibited adipocyte hypertrophy, suppressed IL-6 expression, and relieved oxidative stress [129].

The increased pro-inflammatory cytokine production due to a dysregulated RAAS homeostasis in WAT of patients with obesity probably contributes to increased severity of COVID-19. In addition, obese and diabetic individuals show reduced ACE2 expression in the vasculature which results in increased vascular permeability and endothelial dysfunction that could lead to complications in patients with a severe COVID-19 development [107, 132].

Leptin and growth hormone signaling pathways

Leptin is a hormone mainly secreted by the WAT which has various functions in both the endocrine and immune system [86, 133–135]. Leptin secretion can be considered a satiety signal, and its levels rise exponentially with increasing fat mass. Leptin acts by binding to the leptin receptor (LEPR) in the cell membrane of a wide range of cell types

throughout the body. Its actions are complex and can be separated into central functions involving the hypothalamus and functions in peripheral tissues. Through its central hormonal function, it affects food intake, physical exercise, energy balance, and adipose tissue mass. Leptin in concordance with other hormones and regulators of energy expenditure indirectly affects insulin sensitivity, and other hormone and cytokine functions. Its crucial role in metabolism has been shown experimentally in *lepR*-deficient mice models becoming obese due to increased food intake. Similarly, human mutations also result in severe obesity. We refer to several other publications for more in-depth review [136, 137]. Obese individuals develop leptin resistance over time through desensitization of the leptin receptor resulting in increased production and secretion of leptin.

In addition to its role in energy regulation, leptin promotes inflammatory reactions by acting on the leptin receptor present on immune cells of both the innate and adaptive immune system. Leptin increases monocyte and macrophage proliferation and thus increases the level of immune factors and cytokines such as tumour necrosis factor alpha (TNF- α), IL-1, and IL-6 [138, 139]. At the same time IL-1, TNF- α , and lipopolysaccharides (LPS) can increase leptin levels, showing the bidirectional effect that sustains a pro-inflammatory response [139, 140]. These effects contribute to disruption of the immune response [130] [134].

Increased leptin levels of patients with obesity contribute to chronic low-grade inflammation associated with obesity, which is believed to promote several obesity related diseases such as type-2 diabetes, autoimmune diseases, and cardiovascular diseases. In contrast, in malnourished individuals, circulating levels of leptin are low, which suppresses the immune response and makes these people more susceptible to infections [133, 139]. Excessive adipose tissue and high circulating levels of leptin may contribute to severe progression of COVID-19 and to development of respiratory failure and ARDS. A small study demonstrated that COVID-19 patients who needed mechanical ventilation had significantly higher serum/blood leptin levels compared to a control group without the need for mechanical ventilation [86]. These high leptin levels in these SARS-CoV-2 patients correlated with their BMI suggesting that obesity was the underlying cause of the observed high leptin levels and thus of the more serious presentation of the COVID-19 disease. Based on these observations, the hypothesis was mounted that high leptin levels support development of a cytokine storm and (pharmacological) interference with leptin production might be considered a possible treatment of COVID-19 [86].

Growth hormone (GH) is produced in and secreted from the anterior pituitary gland. GH stimulates muscle mass, bone density, and bone length during childhood and puberty, and regulates lipid and carbohydrate metabolism during the whole lifespan. GH binds to the growth hormone receptor

(GHR) that is expressed mainly in the liver and thereby stimulates the production of the growth factor insulin-like growth factor 1 (IGF1) and -2 (IGF-2). IGF-1 binds and activates the IGF-1 receptor present at the membrane of many different cell types and provokes a growth and proliferation signal [141]. Furthermore, the GH-IGF-1 signaling pathway is crucial for the development and function of the immune system and its disruption can result in immune system impairment as shown in rodent models [142]. It has been demonstrated that GH stimulates the proliferation, differentiation, and survival of antigen-responsive B and T lymphocytes [142] and induces the polarization of macrophages towards the anti-inflammatory M2 type [143]. Strikingly, people with obesity that have a high risk for a severe development of COVID-19 are characterized by strongly reduced GH levels [144]. It is therefore tempting to speculate that the lack of GH in obese patients might contribute to the strong lymphopenia particularly observed in severe cases of the disease [74–76]. Furthermore, reduced GH levels are associated with an increased pro-inflammatory function of macrophages and elevated secretion of inflammatory cytokines like TNF α and IL6 [145], and therefore could promote the inflammatory syndrome that is associated with severe COVID-19. However, the effects of GH deficiency and GH treatment on monocyte/macrophage function and inflammatory cytokine secretion are discussed controversially and GH treatment can also have pro-inflammatory effects [146].

Another complication that is often observed with severe COVID-19 is the occurrence of thrombosis in the venous system and to a lesser extent in the arterial system, which contributes to the increased mortality [147]. GH deficiency can promote thrombosis because it results in an impairment of the fibrinolysis system [148] and therefore could be connected to COVID-19 associated thrombosis. Furthermore, GH levels decrease also during ageing [141] and are generally lower in males compared to females [149], which fits to the strongly increased risk for a severe COVID-19 development in older patients [150] and to the higher risk of male patients [151–153]. Thus, treatment with recombinant human GH could help to activate the adaptive immune system and dampen the severe course of the disease and might be beneficial particularly for obese and older COVID-19 patients that suffer from reduced GH levels [154].

Obesity and contagiousness

It has been described that virally infected individuals with obesity are more contagious than lean counterparts [90, 155, 156]. For example, the amount of influenza virus in exhaled breath positively correlates with BMI [156]. Several mechanisms contribute to this increased contagiousness. To begin with, viral shedding is prolonged to 104% and thus chances of

spreading the virus are increased [155]. Furthermore, the disrupted immune response causes delayed production of interferons which gives the virus the opportunity to replicate more RNA and get more virulent [157, 158]. These findings indicate that a population with a high number of patients with obesity might increase the risk of the appearance of more virulent viruses and will eventually lead to higher mortality overall [90]. COVID-19 is rapidly spreading around parts of the world particularly where obesity prevalence is alarmingly high, for example in the United States of America, where more than 40% of the residents live with obesity (WHO, <https://www.who.int>). It is possible that the high prevalence of obesity contributes to the rapid and extensive spread of SARS-CoV-2 in these countries.

Vaccination and obesity

Host factors such as age, sex, pregnancy, and immune history play an important role in virus vaccine efficacy [159]. Obesity also has an impact on this efficacy; adults with obesity have a two times higher risk, respectively 9.8% compared to 5.1% in leaner counterparts, for developing influenza or influenza-like illnesses after developing efficient antibody response to the given trivalent influenza vaccine [160]. It is thought that lower effectiveness of the influenza vaccine is mediated by poor T-cell function. In obese individuals, the activation of cytotoxic T-cells through mononuclear cells from peripheral blood is decreased and expression of functional markers like granzyme B and IFN- γ is diminished [161]. Obese mice have decreased numbers of B-cells in the bone marrow, which are the most important memory cells responsible for formation of antibodies [162]. In addition, an increased production of non-neutralizing antibodies and a decreased production of influenza-specific antibodies were seen in reaction to an adjuvant influenza vaccine [163]. It was suggested that chronic inflammation in obesity might play a role in the reduced efficacy of inactivated monochronic influenza vaccine [164]. Increasing the dose or using an adjuvant was not efficient when obese mice had been infected with the influenza virus [163]. Another study aimed to compare the serologic response to a monovalent H1N1 influenza vaccine in children and adults of various BMI. After a single dose of H1N1 vaccine, higher geometric mean titers (GMT) of hemagglutination inhibition antibody (HAI) were seen in adults with obesity compared to leaner counterparts, even after correcting for age, race, and pre-vaccination [165]. No difference was seen in serologic response after two doses [161, 165, 166]. After 12 months post-vaccination, obese individuals had significantly lower activation of CD4+ and CD8+ T-cells when challenged with H1N1 ex vivo [161, 167]. Hence, these findings suggest that developing an efficient immune response is not enough to ensure long-term protection in people with obesity.

Discussion and conclusion

Here we have reviewed the literature on COVID-19 and its relation to obesity as a major risk factor for severe disease development. A meta-analysis assessing COVID-19 fatality rates clearly reveals age as the foremost risk factor. The study demonstrates that differences in the population age structure and age-specific incidence of severe COVID-19 explain nearly 90% of the geographical variation in population infection-related fatality rates (IFR; the proportion of deaths among confirmed cases of the disease). The analysis shows an exponential relationship between age and IFR with very low values for children and younger adults, progressively increasing to 0.4% at age 55, 1.3% at age 65, 4.2% at age 75, and 14% at age 85 [168]. COVID-19 appears to affect men more severely than women with higher mortality rates [151–153, 169]. A combination of different factors, both biological and environmental, likely contributes to the gender difference. For example, plasma levels of C reactive protein (CRP), ferritin, and other inflammatory markers are significantly higher in male patients. This points to a heightened inflammatory response in men with COVID-19. Different mechanisms contributing to this heightened inflammatory response have been proposed like lower ACE2 levels in males compared to females which have been associated with a more severe course of infection or the testosterone-induced expression of the transmembrane protease, serine 2 (TMPRSS2) that is involved in SARS-CoV-2 spike protein priming and cell fusion. Furthermore, data from mouse models suggest a protective function of estrogens in COVID-19 infection through suppression of monocyte–macrophage recruitment [169]. Another meta-analysis revealed several comorbidities for developing severe COVID-19, including obesity, cardiovascular disease, diabetes, respiratory disease (including severe asthma), a history of hematological malignancy or recent other cancer, kidney, liver, and neurological diseases, and autoimmune conditions [170]. Metabolic disturbances superimposed on age-related immunological decline would explain most of the COVID-19 cases with severe course of the disease. Since responding (naïve) T-cells are reduced by age or through immunological derangements caused by obesity-related systemic inflammation, the compromised immune system fails to adequately mount an effective T-cell response upon infection with SARS-CoV-2. In addition, the prevailing innate immune response in the lungs causes a misbalance in inflammatory cytokine secretion that might be reinforced by the chronic inflammation associated with ageing and/or obesity resulting in a cytokine storm syndrome, which causes tissue damage. Particularly, the high circulating levels of the pro-inflammatory adipokine leptin in patients with obesity together with the reduced expression of the anti-inflammatory-acting ACE2 receptors in the lung epithelium of infected patients counteract the clearance of the innate immune response with

fatal consequences for the patients. With the use of known anti-inflammatory-acting drugs like glucocorticoids and/or IL-6 inhibitors, it might be able to suppress the overacting innate immune system, which was shown to be beneficial at least in a subset of hospitalized COVID-19 patients. At the end, vaccination will be the most effective measure in the battle against the SARS-CoV-2 virus and its associated complications. However, also here the high-risk patients like the elderly and those with obesity might have the disadvantage of a less efficient immune response and/or a shorter lasting immune memory that limit the vaccination effectivity.

Author contribution C.F. C conceived the review. A. de L., M.A.L. O L, A.C. W., C.M, and C.F. C all contributed to collecting and reading and analyzing the reviewed manuscripts. C.F. C. drew the figures. A. de L., M.A.L. O L, and A.C. W. drafted the manuscript. All authors edited and revised the manuscript.

Funding All authors are supported by the University Medical Center of Groningen (UMCG), University of Groningen, The Netherlands.

Declarations

Competing interests The authors declare no competing interests.

Open Access This article is licensed under a Creative Commons Attribution 4.0 International License, which permits use, sharing, adaptation, distribution and reproduction in any medium or format, as long as you give appropriate credit to the original author(s) and the source, provide a link to the Creative Commons licence, and indicate if changes were made. The images or other third party material in this article are included in the article's Creative Commons licence, unless indicated otherwise in a credit line to the material. If material is not included in the article's Creative Commons licence and your intended use is not permitted by statutory regulation or exceeds the permitted use, you will need to obtain permission directly from the copyright holder. To view a copy of this licence, visit <http://creativecommons.org/licenses/by/4.0/>.

References

- Kelly T, Yang W, Chen CS, Reynolds K, He J (2008) Global burden of obesity in 2005 and projections to 2030. *Int J Obes* 32(9):1431–1437
- Mraz M, Haluzik M (2014) The role of adipose tissue immune cells in obesity and low-grade inflammation. *J Endocrinol* 222(3):R113–R127
- Fang H, Berg E, Cheng X, Shen W (2018) How to best assess abdominal obesity. *Curr Opin Clin Nutr Metab Care* 21(5):360–365
- Longo M, Zatterale F, Naderi J, Parrillo L, Formisano P, Raciti GA, Beguinot F, Miele C (2019) Adipose tissue dysfunction as determinant of obesity-associated metabolic complications. *Int J Mol Sci* 20(9). <https://doi.org/10.3390/ijms20092358>
- Tchkonia T, Morbeck DE, Von Zglinicki T, Van Deursen J, Lustgarten J, Scrable H, Khosla S, Jensen MD, Kirkland JL (2010) Fat tissue, aging, and cellular senescence. *Aging Cell* 9(5):667–684
- Ghaben AL, Scherer PE (2019) Adipogenesis and metabolic health. *Nat Rev Mol Cell Biol* 20(4):242–258
- Ibrahim MM (2010) Subcutaneous and visceral adipose tissue: structural and functional differences. *Obes Rev* 11(1):11–18
- Frasca D, Blomberg BB (2017) Adipose tissue inflammation induces B cell inflammation and decreases B cell function in aging. *Front Immunol* 8:1003
- Jo J, Gavrilova O, Pack S, Jou W, Mullen S, Sumner AE, Cushman SW, Perival V (2009) Hypertrophy and/or hyperplasia: dynamics of adipose tissue growth. *PLoS Comput Biol* 5(3):e1000324
- Tandon P, Wafer R, Minchin JEN (2018) Adipose morphology and metabolic disease. *J Exp Biol* 221(Pt Suppl 1). <https://doi.org/10.1242/jeb.164970>
- White U, Ravussin E (2019) Dynamics of adipose tissue turnover in human metabolic health and disease. *Diabetologia* 62(1):17–23
- Müller C, Zidek LM, Eichwald S, Calkhoven CF (2020) C/EBP β regulates hypertrophic versus hyperplastic fat tissue growth. *BioRxiv*. <https://doi.org/10.1101/2020.09.02.278911>
- Wu D, Wu T, Liu Q, Yang Z (2020) The SARS-CoV-2 outbreak: what we know. *Int J Infect Dis* 94:44–48
- Chen N, Zhou M, Dong X, Qu J, Gong F, Han Y, Qiu Y, Wang J, Liu Y, Wei Y, Xia J, Yu T, Zhang X, Zhang L (2020) Epidemiological and clinical characteristics of 99 cases of 2019 novel coronavirus pneumonia in Wuhan, China: a descriptive study. *Lancet* 395(10223):507–513
- Guan WJ, Ni ZY, Hu Y, Liang WH, Ou CQ, He JX, Liu L, Shan H, Lei CL, DSC H, Du B, Li LJ, Zeng G, Yuen KY, Chen RC, Tang CL, Wang T, Chen PY, Xiang J, Li SY, Wang JL, Liang ZJ, Peng YX, Wei L, Liu Y, Hu YH, Peng P, Wang JM, Liu JY, Chen Z, Li G, Zheng ZJ, Qiu SQ, Luo J, Ye CJ, Zhu SY, Zhong NS, China Medical Treatment Expert Group for C (2020) Clinical characteristics of coronavirus disease 2019 in China. *N Engl J Med* 382(18):1708–1720
- Park SE (2020) Epidemiology, virology, and clinical features of severe acute respiratory syndrome -coronavirus-2 (SARS-CoV-2; Coronavirus Disease-19). *Clin Exp Pediatr* 63(4):119–124
- Rothan HA, Byrareddy SN (2020) The epidemiology and pathogenesis of coronavirus disease (COVID-19) outbreak. *J Autoimmun* 109:102433
- Armstrong RA, Kane AD, Kursumovic E, Oglesby FC, Cook TM (2021) Mortality in patients admitted to intensive care with COVID-19: an updated systematic review and meta-analysis of observational studies. *Anaesthesia* 76(4):537–548
- Kakodkar P, Kaka N, Baig MN (2020) A comprehensive literature review on the clinical presentation, and management of the pandemic coronavirus disease 2019 (COVID-19). *Cureus* 12(4):e7560
- Cavanagh D (2005) Coronaviridae: a review of coronaviruses and toroviruses. In: Schmidt A, Weber O, Wolff MH (eds) *Coronaviruses with Special Emphasis on First Insights Concerning SARS*. Birkhäuser Basel, Basel, pp 1–54. https://doi.org/10.1007/3-7643-7339-3_1
- Schoeman D, Fielding BC (2019) Coronavirus envelope protein: current knowledge. *Virology* 16(1):69
- Song Z, Xu Y, Bao L, Zhang L, Yu P, Qu Y, Zhu H, Zhao W, Han Y, Qin C (2019) From SARS to MERS, thrusting coronaviruses into the spotlight. *Viruses* 11(1). <https://doi.org/10.3390/v11010059>
- Kaul D (2020) An overview of coronaviruses including the SARS-2 coronavirus - molecular biology, epidemiology and clinical implications. *Curr Med Res Pract* 10(2):54–64
- Masters PS (2006) The molecular biology of coronaviruses. *Adv Virus Res* 66:193–292
- Collins AR, Knobler RL, Powell H, Buchmeier MJ (1982) Monoclonal antibodies to murine hepatitis virus-4 (strain JHM)

- define the viral glycoprotein responsible for attachment and cell-cell fusion. *Virology* 119(2):358–371
26. Siu YL, Teoh KT, Lo J, Chan CM, Kien F, Escrivo N, Tsao SW, Nicholls JM, Altmeyer R, Peiris JS, Bruzzone R, Nal B (2008) The M, E, and N structural proteins of the severe acute respiratory syndrome coronavirus are required for efficient assembly, trafficking, and release of virus-like particles. *J Virol* 82(22):11318–11330
 27. Kirchdoerfer RN, Cottrell CA, Wang N, Pallesen J, Yassine HM, Turner HL, Corbett KS, Graham BS, McLellan JS, Ward AB (2016) Pre-fusion structure of a human coronavirus spike protein. *Nature* 531(7592):118–121
 28. de Haan CA, Rottier PJ (2005) Molecular interactions in the assembly of coronaviruses. *Adv Virus Res* 64:165–230
 29. Sturman LS, Holmes KV, Behnke J (1980) Isolation of coronavirus envelope glycoproteins and interaction with the viral nucleocapsid. *J Virol* 33(1):449–462
 30. DeDiego ML, Alvarez E, Almazan F, Rejas MT, Lamirande E, Roberts A, Shieh WJ, Zaki SR, Subbarao K, Enjuanes L (2007) A severe acute respiratory syndrome coronavirus that lacks the E gene is attenuated in vitro and in vivo. *J Virol* 81(4):1701–1713
 31. Kuo L, Masters PS (2003) The small envelope protein E is not essential for murine coronavirus replication. *J Virol* 77(8):4597–4608
 32. Shereen MA, Khan S, Kazmi A, Bashir N, Siddique R (2020) COVID-19 infection: origin, transmission, and characteristics of human coronaviruses. *J Adv Res* 24:91–98
 33. Busse LW, Chow JH, McCurdy MT, Khanna AK (2020) COVID-19 and the RAAS—a potential role for angiotensin II? *Crit Care* 24(1):136
 34. Lam SD, Bordin N, Waman VP, Scholes HM, Ashford P, Sen N, van Dorp L, Rauer C, Dawson NL, Pang CSM, Abbasian M, Sillitoe I, Edwards SJL, Fraternali F, Lees JG, Santini JM, Orengo CA (2020) SARS-CoV-2 spike protein predicted to form complexes with host receptor protein orthologues from a broad range of mammals. *Sci Rep* 10(1):16471
 35. Shang J, Wan Y, Luo C, Ye G, Geng Q, Auerbach A, Li F (2020) Cell entry mechanisms of SARS-CoV-2. *Proc Natl Acad Sci U S A* 117(21):11727–11734
 36. Hoffmann M, Kleine-Weber H, Schroeder S, Kruger N, Herrler T, Erichsen S, Schiergens TS, Herrler G, Wu NH, Nitsche A, Muller MA, Drosten C, Pohlmann S (2020) SARS-CoV-2 cell entry depends on ACE2 and TMPRSS2 and is blocked by a clinically proven protease inhibitor. *Cell* 181(2):271–280 e278
 37. Zhou P, Yang XL, Wang XG, Hu B, Zhang L, Zhang W, Si HR, Zhu Y, Li B, Huang CL, Chen HD, Chen J, Luo Y, Guo H, Jiang RD, Liu MQ, Chen Y, Shen XR, Wang X, Zheng XS, Zhao K, Chen QJ, Deng F, Liu LL, Yan B, Zhan FX, Wang YY, Xiao GF, Shi ZL (2020) A pneumonia outbreak associated with a new coronavirus of probable bat origin. *Nature* 579(7798):270–273
 38. Bourgonje AR, Abdulle AE, Timens W, Hillebrands JL, Navis GJ, Gordijn SJ, Bolling MC, Dijkstra G, Voors AA, Osterhaus AD, van der Voort PH, Mulder DJ, van Goor H (2020) Angiotensin-converting enzyme 2 (ACE2), SARS-CoV-2 and the pathophysiology of coronavirus disease 2019 (COVID-19). *J Pathol* 251(3):228–248
 39. Verdecchia P, Cavallini C, Spavanello A, Angeli F (2020) The pivotal link between ACE2 deficiency and SARS-CoV-2 infection. *Eur J Intern Med* 76:14–20
 40. Hamming I, Timens W, Bulthuis ML, Lely AT, Navis G, van Goor H (2004) Tissue distribution of ACE2 protein, the functional receptor for SARS coronavirus. A first step in understanding SARS pathogenesis. *J Pathol* 203(2):631–637
 41. Brake SJ, Barnsley K, Lu W, McAlinden KD, Eapen MS, Sohail SS (2020) Smoking upregulates angiotensin-converting enzyme-2 receptor: a potential adhesion site for novel coronavirus SARS-CoV-2 (Covid-19). *J Clin Med* 9(3). <https://doi.org/10.3390/jcm9030841>
 42. Hanff TC, Harhay MO, Brown TS, Cohen JB, Mohareb AM (2020) Is there an association between COVID-19 mortality and the renin-angiotensin system? A Call for Epidemiologic Investigations. *Clin Infect Dis* 71(15):870–874
 43. Pinheiro TA, Barcala-Jorge AS, Andrade JMO, Pinheiro TA, Ferreira ECN, Crespo TS, Batista-Jorge GC, Vieira CA, Lelis DF, Paraiso AF, Pinheiro UB, Bertagnolli M, Albuquerque CJB, Guimaraes ALS, de Paula AMB, Caldeira AP, Santos SHS (2017) Obesity and malnutrition similarly alter the renin-angiotensin system and inflammation in mice and human adipose. *J Nutr Biochem* 48:74–82
 44. Gupte M, Boustany-Kari CM, Bharadwaj K, Police S, Thatcher S, Gong MC, English VL, Cassis LA (2008) ACE2 is expressed in mouse adipocytes and regulated by a high-fat diet. *Am J Physiol Regul Integr Comp Physiol* 295(3):R781–R788
 45. Goddard AF, Mumtaz P (2021) SARS-CoV-2 variants and ending the COVID-19 pandemic. *Lancet* 397:952–954
 46. Volz E, Hill V, McCrone JT, Price A, Jorgensen D, O’Toole A, Southgate J, Johnson R, Jackson B, Nascimento FF, Rey SM, Nicholls SM, Colquhoun RM, da Silva FA, Shepherd J, Pascall DJ, Shah R, Jesudason N, Li K, Jarrett R, Pacchiarini N, Bull M, Geidelberg L, Siveroni I, Consortium C-U, Goodfellow I, Loman NJ, Pybus OG, Robertson DL, Thomson EC, Rambaut A, Connor TR (2021) Evaluating the effects of SARS-CoV-2 spike mutation D614G on transmissibility and pathogenicity. *Cell* 184(1):64–75 e11
 47. Davies NG, Jarvis CI, Group CC-W, Edmunds WJ, Jewell NP, Diaz-Ordaz K, Keogh RH (2021) Increased mortality in community-tested cases of SARS-CoV-2 lineage B.1.1.7. *Nature*. <https://doi.org/10.1038/s41586-021-03426-1>
 48. Challen R, Brooks-Pollock E, Read JM, Dyson L, Tsaneva-Atanasova K, Danon L (2021) Risk of mortality in patients infected with SARS-CoV-2 variant of concern 202012/1: matched cohort study. *BMJ* 372:n579
 49. Bager P, Wohlfahrt J, Fonager J, Albertsen M, Yssing Michaelsen T, Holten Møller C, Ethelberg S, Legarth R, Fischer Button MS, Gubbels SM, Voldstedlund M, Mølbak K, Skov RL, Fomsgaard A, Grove Krause T (2021) Increased risk of hospitalisation associated with infection with SARS-CoV-2 lineage B.1.1.7 in Denmark. *Lancet*. <https://doi.org/10.2139/ssrn.3792894>
 50. Sabino EC, Buss LF, Carvalho MPS, Prete CA Jr, Crispim MAE, Fraiji NA, Pereira RHM, Parag KV, da Silva PP, Kraemer MUG, Oikawa MK, Salomon T, Cucunuba ZM, Castro MC, de Souza Santos AA, Nascimento VH, Pereira HS, Ferguson NM, Pybus OG, Kucharski A, Busch MP, Dye C, Faria NR (2021) Resurgence of COVID-19 in Manaus, Brazil, despite high seroprevalence. *Lancet* 397(10273):452–455
 51. Voloch CM, da Silva Francisco R Jr, de Almeida LGP, Cardoso CC, Brustolini OJ, Gerber AL, Guimaraes APC, Mariani D, da Costa RM, Ferreira OC Jr, Covid19-Ufjf Workgroup LWACC, Frauches TS, de Mello CMB, Leitao IC, Galliez RM, Faffe DS, Castineiras T, Tanuri A, de Vasconcelos ATR (2021) Genomic characterization of a novel SARS-CoV-2 lineage from Rio de Janeiro, Brazil. *J Virol*. <https://doi.org/10.1128/JVI.00119-21>
 52. Xie X, Liu Y, Liu J, Zhang X, Zou J, Fontes-Garfias CR, Xia H, Swanson KA, Cutler M, Cooper D, Menachery VD, Weaver SC, Dormitzer PR, Shi PY (2021) Neutralization of SARS-CoV-2 spike 69/70 deletion, E484K and N501Y variants by BNT162b2 vaccine-elicited sera. *Nat Med*. <https://doi.org/10.1038/s41591-021-01270-4>
 53. Huang C, Wang Y, Li X, Ren L, Zhao J, Hu Y, Zhang L, Fan G, Xu J, Gu X, Cheng Z, Yu T, Xia J, Wei Y, Wu W, Xie X, Yin W, Li H, Liu M, Xiao Y, Gao H, Guo L, Xie J, Wang G, Jiang R, Gao Z, Jin Q, Wang J, Cao B (2020) Clinical features of patients infected with 2019 novel coronavirus in Wuhan, China. *Lancet* 395(10223):497–506

54. Wang D, Hu B, Hu C, Zhu F, Liu X, Zhang J, Wang B, Xiang H, Cheng Z, Xiong Y, Zhao Y, Li Y, Wang X, Peng Z (2020) Clinical characteristics of 138 hospitalized patients with 2019 novel coronavirus-infected pneumonia in Wuhan, China. *JAMA* 323(11):1061–1069
55. Zhou F, Yu T, Du R, Fan G, Liu Y, Liu Z, Xiang J, Wang Y, Song B, Gu X, Guan L, Wei Y, Li H, Wu X, Xu J, Tu S, Zhang Y, Chen H, Cao B (2020) Clinical course and risk factors for mortality of adult inpatients with COVID-19 in Wuhan, China: a retrospective cohort study. *Lancet* 395(10229):1054–1062
56. Herold T, Jurinovic V, Arnreich C, Lipworth BJ, Hellmuth JC, von Bergwelt-Baildon M, Klein M, Weinberger T (2020) Elevated levels of IL-6 and CRP predict the need for mechanical ventilation in COVID-19. *J Allergy Clin Immunol* 146(1):128–136 e124
57. Mehta P, DF MA, Brown M, Sanchez E, Tattersall RS, Manson JJ, Hlh Across Speciality Collaboration UK (2020) COVID-19: consider cytokine storm syndromes and immunosuppression. *Lancet* 395(10229):1033–1034
58. Ruan Q, Yang K, Wang W, Jiang L, Song J (2020) Clinical predictors of mortality due to COVID-19 based on an analysis of data of 150 patients from Wuhan, China. *Intensive Care Med* 46(5):846–848
59. Wu C, Chen X, Cai Y, Xia J, Zhou X, Xu S, Huang H, Zhang L, Zhou X, Du C, Zhang Y, Song J, Wang S, Chao Y, Yang Z, Xu J, Zhou X, Chen D, Xiong W, Xu L, Zhou F, Jiang J, Bai C, Zheng J, Song Y (2020) Risk factors associated with acute respiratory distress syndrome and death in patients with coronavirus disease 2019 Pneumonia in Wuhan, China. *JAMA Intern Med* 180(7):934–943
60. Zhang X, Tan Y, Ling Y, Lu G, Liu F, Yi Z, Jia X, Wu M, Shi B, Xu S, Chen J, Wang W, Chen B, Jiang L, Yu S, Lu J, Wang J, Xu M, Yuan Z, Zhang Q, Zhang X, Zhao G, Wang S, Chen S, Lu H (2020) Viral and host factors related to the clinical outcome of COVID-19. *Nature* 583(7816):437–440
61. Yang Y, Shen C, Li J, Yuan J, Wei J, Huang F, Wang F, Li G, Li Y, Xing L, Peng L, Yang M, Cao M, Zheng H, Wu W, Zou R, Li D, Xu Z, Wang H, Zhang M, Zhang Z, Gao GF, Jiang C, Liu L, Liu Y (2020) Plasma IP-10 and MCP-3 levels are highly associated with disease severity and predict the progression of COVID-19. *J Allergy Clin Immunol* 146(1):119–127 e114
62. Zhou Z, Ren L, Zhang L, Zhong J, Xiao Y, Jia Z, Guo L, Yang J, Wang C, Jiang S, Yang D, Zhang G, Li H, Chen F, Xu Y, Chen M, Gao Z, Yang J, Dong J, Liu B, Zhang X, Wang W, He K, Jin Q, Li M, Wang J (2020) Heightened innate immune responses in the respiratory tract of COVID-19 patients. *Cell Host Microbe* 27(6):883–890 e882
63. Chua RL, Lukassen S, Trump S, Hennig BP, Wendisch D, Pott F, Debnath O, Thurmann L, Kurth F, Volker MT, Kazmierski J, Timmermann B, Twardziok S, Schneider S, Machleidt F, Muller-Redetzky H, Maier M, Krannich A, Schmidt S, Balzer F, Liebig J, Loske J, Suttorp N, Eils J, Ishaque N, Liebert UG, von Kalle C, Hocke A, Witzernath M, Goffinet C, Drosten C, Laudi S, Lehmann I, Conrad C, Sander LE, Eils R (2020) COVID-19 severity correlates with airway epithelium-immune cell interactions identified by single-cell analysis. *Nat Biotechnol* 38(8):970–979
64. Liao M, Liu Y, Yuan J, Wen Y, Xu G, Zhao J, Cheng L, Li J, Wang X, Wang F, Liu L, Amit I, Zhang S, Zhang Z (2020) Single-cell landscape of bronchoalveolar immune cells in patients with COVID-19. *Nat Med* 26(6):842–844
65. Channappanavar R, Perlman S (2017) Pathogenic human coronavirus infections: causes and consequences of cytokine storm and immunopathology. *Semin Immunopathol* 39(5):529–539
66. Otsuka R, Seino KI (2020) Macrophage activation syndrome and COVID-19. *Inflamm Regen* 40:19
67. Group WHOREAfC-TW, Sterne JAC, Murthy S, Diaz JV, Slutsky AS, Villar J, Angus DC, Annane D, Azevedo LCP, Berwanger O, Cavalcanti AB, Dequin PF, Du B, Emberson J, Fisher D, Giraudeau B, Gordon AC, Granholm A, Green C, Haynes R, Heming N, Higgins JPT, Horby P, Juni P, Landray MJ, Le Gouge A, Leclerc M, Lim WS, Machado FR, McArthur C, Meziani F, Moller MH, Perner A, Petersen MW, Savovic J, Tomazini B, Veiga VC, Webb S, Marshall JC (2020) Association between administration of systemic corticosteroids and mortality among critically ill patients with COVID-19: a meta-analysis. *JAMA* 324(13):1330–1341
68. Angus DC, Derde L, Al-Beidh F, Annane D, Arabi Y, Beane A, van Bentum-Puijk W, Berry L, Bhimani Z, Bonten M, Bradbury C, Brunkhorst F, Buxton M, Buzgau A, Cheng AC, de Jong M, Detry M, Estcourt L, Fitzgerald M, Goossens H, Green C, Haniffa R, Higgins AM, Horvat C, Hullegie SJ, Kruger P, Lamontagne F, Lawler PR, Linstrum K, Litton E, Lorenzi E, Marshall J, McAuley D, McGlothlin A, McGuinness S, McVerry B, Montgomery S, Mouncey P, Murthy S, Nichol A, Parke R, Parker J, Rowan K, Sanil A, Santos M, Saunders C, Seymour C, Turner A, van de Veerdonk F, Venkatesh B, Zarychanski R, Berry S, Lewis RJ, McArthur C, Webb SA, Gordon AC, Writing Committee for the R-CAP1, Al-Beidh F, Angus D, Annane D, Arabi Y, van Bentum-Puijk W, Berry S, Beane A, Bhimani Z, Bonten M, Bradbury C, Brunkhorst F, Buxton M, Cheng A, De Jong M, Derde L, Estcourt L, Goossens H, Gordon A, Green C, Haniffa R, Lamontagne F, Lawler P, Litton E, Marshall J, McArthur C, McAuley D, McGuinness S, McVerry B, Montgomery S, Mouncey P, Murthy S, Nichol A, Parke R, Rowan K, Seymour C, Turner A, van de Veerdonk F, Webb S, Zarychanski R, Campbell L, Forbes A, Gattas D, Heritier S, Higgins L, Kruger P, Peake S, Presneill J, Seppelt I, Trapani T, Young P, Bagshaw S, Daneman N, Ferguson N, Misak C, Santos M, Hullegie S, Pletz M, Rohde G, Rowan K, Alexander B, Basile K, Girard T, Horvat C, Huang D, Linstrum K, Vates J, Beasley R, Fowler R, McGloughlin S, Morpeth S, Paterson D, Venkatesh B, Uyeki T, Baillie K, Duffy E, Fowler R, Hills T, Orr K, Patanwala A, Tong S, Netea M, Bihari S, Carrier M, Fergusson D, Goligher E, Haidar G, Hunt B, Kumar A, Laffan M, Lawless P, Lother S, McCallum P, Middeldop S, McQuilten Z, Neal M, Pasi J, Schutgens R, Stanworth S, Turgeon A, Weissman A, Adhikari N, Anstey M, Brant E, de Man A, Lamontagne F, Masse MH, Udy A, Arnold D, Begin P, Charlewood R, Chasse M, Coyne M, Cooper J, Daly J, Gosbell I, Harvala-Simmonds H, Hills T, MacLennan S, Menon D, McDyer J, Priddey N, Roberts D, Shankar-Hari M, Thomas H, Timmouth A, Triulzi D, Walsh T, Wood E, Calfee C, O’Kane C, Shyamsundar M, Sinha P, Thompson T, Young I, Bihari S, Hodgson C, Laffey J, McAuley D, Orford N, Neto A, Detry M, Fitzgerald M, Lewis R, McGlothlin A, Sanil A, Saunders C, Berry L, Lorenzi E, Miller E, Singh V, Zammit C, van Bentum Puijk W, Bouwman W, Mangindaan Y, Parker L, Peters S, Rietveld I, Raymakers K, Ganpat R, Brillinger N, Markgraf R, Ainscough K, Brickell K, Anjum A, Lane JB, Richards-Belle A, Sault M, Wiley D, Bion J, Connor J, Gates S, Manax V, van der Poll T, Reynolds J, van Beurden M, Effelaar E, Schotsman J, Boyd C, Harland C, Shearer A, Wren J, Clermont G, Garrard W, Kalchthaler K, King A, Ricketts D, Malakoutis S, Marroquin O, Music E, Quinn K, Cate H, Pearson K, Collins J, Hanson J, Williams P, Jackson S, Asghar A, Dyas S, Sutu M, Murphy S, Williamson D, Mguni N, Potter A, Porter D, Goodwin J, Rook C, Harrison S, Williams H, Campbell H, Lomme K, Williamson J, Sheffield J, van’t Hoff W, McCracken P, Young M, Board J, Mart E, Knott C, Smith J, Boschert C, Affleck J, Ramanan M, D’Souza R, Pateman K, Shakih A, Cheung W, Kol M, Wong H, Shah A, Wagh A, Simpson J, Duke G, Chan P, Cartner B, Hunter S, Laver R, Shrestha T, Regli A, Pellicano A, McCullough J, Tallott M, Kumar N, Panwar R, Brinkerhoff G, Koppen C, Cazzola F, Brain M, Mineall S, Fischer R, Biradar V, Soar N, White H, Estensen K,

- Morrison L, Smith J, Cooper M, Health M, Shehabi Y, Al-Bassam W, Hulley A, Whitehead C, Lowrey J, Gresha R, Walsham J, Meyer J, Harward M, Venz E, Williams P, Kurenda C, Smith K, Smith M, Garcia R, Barge D, Byrne D, Byrne K, Driscoll A, Fortune L, Janin P, Yarad E, Hammond N, Bass F, Ashelford A, Waterson S, Wedd S, McNamara R, Buhr H, Coles J, Schweikert S, Wibrow B, Rauniyar R, Myers E, Fysh E, Dawda A, Mevavala B, Litton E, Ferrier J, Nair P, Buscher H, Reynolds C, Santamaria J, Barbazza L, Homes J, Smith R, Murray L, Brailsford J, Forbes L, Maguire T, Mariappa V, Smith J, Simpson S, Maiden M, Bone A, Horton M, Salerno T, Sterba M, Geng W, Depuydt P, De Waele J, De Bus L, Fierens J, Bracke S, Reeve B, Dechert W, Chasse M, Carrier FM, Boumahni D, Benettaib F, Ghamraoui A, Bellemare D, Cloutier E, Francoeur C, Lamontagne F, D'Aragon F, Carbonneau E, Leblond J, Vazquez-Grande G, Marten L, Wilson M, Albert M, Serri K, Cavayas A, Duplaix M, Williams V, Rochweg B, Karachi T, Oczkowski S, Centofanti J, Millen T, Duan E, Tsang J, Patterson L, English S, Watpool I, Porteous R, Mieziitis S, McIntyre L, Brochard L, Burns K, Sandhu G, Khalid I, Binnie A, Powell E, McMillan A, Luk T, Aref N, Andric Z, Cviljevic S, Dimoti R, Zapalac M, Mirkovic G, Barsic B, Kutlesa M, Kotarski V, Vujaklija Brajkovic A, Babel J, Sever H, Dragija L, Kusan I, Vaara S, Pettila L, Heinonen J, Kuitunen A, Karlsson S, Vahtera A, Kiiski H, Ristimaki S, Azaiz A, Charron C, Godement M, Geri G, Vieillard-Baron A, Pourcine F, Monchi M, Luis D, Mercier R, Sagnier A, Verrier N, Caplin C, Siami S, Aparicio C, Vautier S, Jebblaoui A, Fartoukh M, Courtin L, Labbe V, Leparco C, Muller G, Nay MA, Kamel T, Benzekri D, Jacquier S, Mercier E, Chartier D, Salmon C, Dequin P, Schneider F, Morel G, L'Hotellier S, Badie J, Berdaguer FD, Malfroy S, Mezher C, Bourgoin C, Megarbane B, Voicu S, Deye N, Malissin I, Sutterlin L, Guitton C, Darreau C, Landais M, Chudeau N, Robert A, Moine P, Heming N, Maxime V, Bossard I, Nicholier TB, Colin G, Zinzoni V, Maquigneau N, Finn A, Kress G, Hoff U, Friedrich Hinrichs C, Nee J, Pletz M, Hagel S, Ankert J, Kolanos S, Bloos F, Petros S, Pasieka B, Kunz K, Appelt P, Schutze B, Kluge S, Nierhaus A, Jarczak D, Roedl K, Weismann D, Frey A, Klinikum Neukolln V, Reill L, Distler M, Maselli A, Belteczki J, Magyar I, Fazekas A, Kovacs S, Szoke V, Szigligeti G, Leszkoven J, Collins D, Breen P, Frohlich S, Whelan R, McNicholas B, Scully M, Casey S, Kernan M, Doran P, O'Dwyer M, Smyth M, Hayes L, Hoiting O, Peters M, Rengers E, Evers M, Prinssen A, Bosch Ziekenhuis J, Simons K, Rozendaal W, Polderman F, de Jager P, Moviat M, Paling A, Salet A, Rademaker E, Peters AL, de Jonge E, Wigbers J, Guilder E, Butler M, Cowdrey KA, Newby L, Chen Y, Simmonds C, McConnochie R, Ritzema Carter J, Henderson S, Van Der Heyden K, Mehrtens J, Williams T, Kazemi A, Song R, Lai V, Girijadevi D, Everitt R, Russell R, Hacking D, Buehner U, Williams E, Browne T, Grimwade K, Goodson J, Keet O, Callender O, Martynoga R, Trask K, Butler A, Schischka L, Young C, Lesona E, Olatunji S, Robertson Y, Jose N, Amaro dos Santos Catorze T, de Lima Pereira TNA, Neves Pessoa LM, Castro Ferreira RM, Pereira Sousa Bastos JM, Aysel Florescu S, Stanciu D, Zaharia MF, Kosa AG, Codreanu D, Marabi Y, Al Qasim E, Moneer Hagazy M, Al Swaidan L, Arishi H, Munoz-Bermudez R, Marin-Corral J, Salazar Degracia A, Parrilla Gomez F, Mateo Lopez MI, Rodriguez Fernandez J, Carcel Fernandez S, Carmona Flores R, Leon Lopez R, de la Fuente Martos C, Allan A, Polgarova P, Farahi N, McWilliam S, Hawcutt D, Rad L, O'Malley L, Whitbread J, Kelsall O, Wild L, Thrush J, Wood H, Austin K, Donnelly A, Kelly M, O'Kane S, McClintock D, Warnock M, Johnston P, Gallagher LJ, Mc Goldrick C, Mc Master M, Strzelecka A, Jha R, Kalogirou M, Ellis C, Krishnamurthy V, Deelchand V, Silversides J, McGuigan P, Ward K, O'Neill A, Finn S, Phillips B, Mullan D, Ortiz-Ruiz de Gordo L, Thomas M, Sweet K, Grimmer L, Johnson R, Pinnell J, Robinson M, Gledhill L, Wood T, Morgan M, Cole J, Hill H, Davies M, Antcliff D, Templeton M, Rojo R, Coghlan P, Smees J, Mackay E, Cort J, Whileman A, Spencer T, Spittle N, Kasipandian V, Patel A, Allibone S, Genetu RM, Ramali M, Ghosh A, Bamford P, London E, Cawley K, Faulkner M, Jeffrey H, Smith T, Brewer C, Gregory J, Limb J, Cowton A, O'Brien J, Nikitas N, Wells C, Lankester L, Pulletz M, Williams P, Birch J, Wiseman S, Horton S, Alegria A, Turki S, Elsefi T, Crisp N, Allen L, McCullagh I, Robinson P, Hays C, Babio-Galan M, Stevenson H, Khare D, Pinder M, Selvamoni S, Gopinath A, Pugh R, Menzies D, Mackay C, Allan E, Davies G, Puxty K, McCue C, Cathcart S, Hickey N, Ireland J, Yusuff H, Isgro G, Brightling C, Bourne M, Craner M, Watters M, Prout R, Davies L, Pegler S, Kyeremeh L, Arbane G, Wilson K, Gomm L, Francia F, Brett S, Sousa Arias S, Elin Hall R, Budd J, Small C, Birch J, Collins E, Henning J, Bonner S, Hugill K, Cirstea E, Wilkinson D, Karlikowski M, Sutherland H, Wilhelmsen E, Woods J, North J, Sundaran D, Hollos L, Coburn S, Walsh J, Turns M, Hopkins P, Smith J, Noble H, Depante MT, Clarey E, Laha S, Verlander M, Williams A, Huckle A, Hall A, Cooke J, Gardiner-Hill C, Maloney C, Qureshi H, Flint N, Nicholson S, Southin S, Nicholson A, Borgatta B, Turner-Bone I, Reddy A, Wilding L, Chamara Warnapura L, Agno Sathianathan R, Golden D, Hart C, Jones J, Bannard-Smith J, Henry J, Birchall K, Pomeroy F, Quayle R, Makowski A, Misztal B, Ahmed I, Kyere Diabour T, Naiker K, Stewart R, Mwaura E, Mew L, Wren L, Willams F, Innes R, Doble P, Hutter J, Shovelton C, Plumb B, Szakmany T, Hamlyn V, Hawkins N, Lewis S, Dell A, Gopal S, Ganguly S, Smallwood A, Harris N, Metherell S, Lazaro JM, Newman T, Fletcher S, Nortje J, Fottrell-Gould D, Randell G, Zaman M, Elmahi E, Jones A, Hall K, Mills G, Ryalls K, Bowler H, Sall J, Bourne R, Borrill Z, Duncan T, Lamb T, Shaw J, Fox C, Moreno Cuesta J, Xavier K, Purohit D, Elhassan M, Bakthavatsalam D, Rowland M, Hutton P, Bashyal A, Davidson N, Hird C, Chhablani M, Phalod G, Kirkby A, Archer S, Netherton K, Reschreiter H, Camsooksai J, Patch S, Jenkins S, Pogson D, Rose S, Daly Z, Brimfield L, Claridge H, Parekh D, Bergin C, Bates M, Dasgin J, McGhee C, Sim M, Hay SK, Henderson S, Phull MK, Zaidi A, Pogreban T, Rosaroso LP, Harvey D, Lowe B, Meredith M, Ryan L, Hormis A, Walker R, Collier D, Kimpton S, Oakley S, Rooney K, Rodden N, Hughes E, Thomson N, McGlynn D, Walden A, Jacques N, Coles H, Tilney E, Vowell E, Schuster-Bruce M, Pitts S, Miln R, Purandare L, Vamplew L, Spivey M, Bean S, Burt K, Moore L, Day C, Gibson C, Gordon E, Zitter L, Keenan S, Baker E, Cherian S, Cutler S, Roynon-Reed A, Harrington K, Raithatha A, Bauchmuller K, Ahmad N, Grecu I, Trodd D, Martin J, Wrey Brown C, Arias AM, Craven T, Hope D, Singleton J, Clark S, Rae N, Welters I, Hamilton DO, Williams K, Waugh V, Shaw D, Puthuchery Z, Martin T, Santos F, Uddin R, Somerville A, Tatham KC, Jhanji S, Black E, Dela Rosa A, Howle R, Tully R, Drummond A, Dearden J, Philbin J, Munt S, Vuylsteke A, Chan C, Victor S, Matsa R, Gellamuchio M, Creagh-Brown B, Tooley J, Montague L, De Beaux F, Bullman L, Kersiake I, Demetriou C, Mitchard S, Ramos L, White K, Donnison P, Johns M, Casey R, Mattocks L, Salisburly S, Dark P, Claxton A, McLachlan D, Slevin K, Lee S, Hulme J, Joseph S, Kinney F, Senya HJ, Oborska A, Kayani A, Hadebe B, Orath Prabakaran R, Nichols L, Thomas M, Womer R, Faulkner B, Gendall E, Hayes K, Hamilton-Davies C, Chan C, Mfuko C, Abbass H, Mandadapu V, Leaver S, Forton D, Patel K, Paramasivam E, Powell M, Gould R, Wilby E, Howcroft C, Banach D, Fernandez de Pinedo Artazar Z, Cabrerros L, White I, Croft M, Holland N, Pereira R, Zaki A, Johnson D, Jackson M, Garrard H, Juhaz V, Roy A, Rostron A, Woods L, Cornell S, Pillai S, Harford R, Rees T, Ivatt H, Sundara Raman A, Davey M, Lee K, Barber R, Chablani M, Brohi F, Jagannathan V, Clark M,

- Purvis S, Wetherill B, Dushianthan A, Cusack R, de Courcy-Golder K, Smith S, Jackson S, Attwood B, Parsons P, Page V, Zhao XB, Oza D, Rhodes J, Anderson T, Morris S, Xia Le Tai C, Thomas A, Keen A, Digby S, Cowley N, Wild L, Southern D, Reddy H, Campbell A, Watkins C, Smuts S, Touma O, Barnes N, Alexander P, Felton T, Ferguson S, Sellers K, Bradley-Potts J, Yates D, Birkinshaw I, Kell K, Marshall N, Carr-Knott L, Summers C (2020) Effect of hydrocortisone on mortality and organ support in patients with severe COVID-19: the REMAP-CAP COVID-19 corticosteroid domain randomized clinical trial. *JAMA* 324(13):1317–1329
69. Salama C, Han J, Yau L, Reiss WG, Kramer B, Neidhart JD, Criner GJ, Kaplan-Lewis E, Baden R, Pandit L, Cameron ML, Garcia-Diaz J, Chavez V, Mekebeb-Reuter M, Lima de Menezes F, Shah R, Gonzalez-Lara MF, Assman B, Freedman J, Mohan SV (2021) Tocilizumab in patients hospitalized with covid-19 pneumonia. *N Engl J Med* 384(1):20–30
 70. Salama C, Mohan SV (2021) Tocilizumab in patients hospitalized with covid-19 pneumonia. Reply. *N Engl J Med*. <https://doi.org/10.1056/NEJMc2100217>
 71. Michot JM, Albiges L, Chaput N, Saada V, Pommeret F, Griscelli F, Balleyguier C, Besse B, Marabelle A, Netzer F, Merad M, Robert C, Barlesi F, Gachot B, Stoclin A (2020) Tocilizumab, an anti-IL-6 receptor antibody, to treat COVID-19-related respiratory failure: a case report. *Ann Oncol* 31(7):961–964
 72. Schulte-Schrepping J, Reusch N, Paclik D, Bassler K, Schlickeiser S, Zhang B, Kramer B, Krammer T, Brumhard S, Bonaguro L, De Domenico E, Wendisch D, Grasshoff M, Kapellos TS, Beckstette M, Pecht T, Saglam A, Dietrich O, Mei HE, Schulz AR, Conrad C, Kunkel D, Vafadarnejad E, Xu CJ, Home A, Herbert M, Drews A, Thibeault C, Pfeiffer M, Hippenstiel S, Hocke A, Muller-Redetzky H, Heim KM, Machleidt F, Uhrig A, Bosquillon de Jarcey L, Jurgens L, Stegemann M, Glosenkamp CR, Volk HD, Goffinet C, Landthaler M, Wyler E, Georg P, Schneider M, Dang-Heine C, Neuwinger N, Kappert K, Tauber R, Corman V, Raabe J, Kaiser KM, Vinh MT, Rieke G, Meisel C, Ulas T, Becker M, Geffers R, Witzentrath M, Drosten C, Suttorp N, von Kalle C, Kurth F, Handler K, Schultze JL, Aschenbrenner AC, Li Y, Nattermann J, Sawitzki B, Saliba AE, Sander LE, Deutsche C-OI (2020) Severe COVID-19 is marked by a dysregulated myeloid cell compartment. *Cell* 182(6):1419–1440 e1423
 73. Silvin A, Chapuis N, Dunsmore G, Goubet AG, Dubuisson A, Derosa L, Almire C, Henon C, Kosmider O, Droin N, Rameau P, Catelain C, Alfaro A, Dussiau C, Friedrich C, Sourdeau E, Marin N, Szwebel TA, Cantin D, Mouthon L, Borderie D, Deloger M, Bredel D, Mouraud S, Drubay D, Andrieu M, Lhonneur AS, Saada V, Stoclin A, Willekens C, Pommeret F, Griscelli F, Ng LG, Zhang Z, Bost P, Amit I, Barlesi F, Marabelle A, Pene F, Gachot B, Andre F, Zitvogel L, Ginhoux F, Fontenay M, Solary E (2020) Elevated calprotectin and abnormal myeloid cell subsets discriminate severe from mild COVID-19. *Cell* 182(6):1401–1418 e1418
 74. Yang L, Gou J, Gao J, Huang L, Zhu Z, Ji S, Liu H, Xing L, Yao M, Zhang Y (2020) Immune characteristics of severe and critical COVID-19 patients. *Signal Transduct Target Ther* 5(1):179
 75. Diao B, Wang C, Tan Y, Chen X, Liu Y, Ning L, Chen L, Li M, Liu Y, Wang G, Yuan Z, Feng Z, Zhang Y, Wu Y, Chen Y (2020) Reduction and functional exhaustion of T cells in patients with coronavirus disease 2019 (COVID-19). *Front Immunol* 11:827
 76. Zheng M, Gao Y, Wang G, Song G, Liu S, Sun D, Xu Y, Tian Z (2020) Functional exhaustion of antiviral lymphocytes in COVID-19 patients. *Cell Mol Immunol* 17(5):533–535
 77. Xiong Y, Liu Y, Cao L, Wang D, Guo M, Jiang A, Guo D, Hu W, Yang J, Tang Z, Wu H, Lin Y, Zhang M, Zhang Q, Shi M, Liu Y, Zhou Y, Lan K, Chen Y (2020) Transcriptomic characteristics of bronchoalveolar lavage fluid and peripheral blood mononuclear cells in COVID-19 patients. *Emerg Microbes Infect* 9(1):761–770
 78. Feng Z, Diao B, Wang R, Wang G, Wang C, Tan Y, Liu L, Wang C, Liu Y, Liu Y, Yuan Z, Ren L, Wu Y, Chen Y (2020) The novel severe acute respiratory syndrome coronavirus 2 (SARS-CoV-2) directly decimates human spleens and lymph nodes. *medRxiv*. <https://doi.org/10.1101/2020.0327.20045427>
 79. Hadjadj J, Yatim N, Barnabei L, Corneau A, Boussier J, Smith N, Pere H, Charbit B, Bondet V, Chenevier-Gobeaux C, Breillat P, Carlier N, Gauzit R, Morbieu C, Pene F, Marin N, Roche N, Szwebel TA, Merklings SH, Treluyer JM, Veyer D, Mouthon L, Blanc C, Tharaux PL, Rozenberg F, Fischer A, Duffy D, Rieux-Laucat F, Kermeis S, Terrier B (2020) Impaired type I interferon activity and inflammatory responses in severe COVID-19 patients. *Science* 369(6504):718–724
 80. Lucas C, Wong P, Klein J, Castro TBR, Silva J, Sundaram M, Ellingson MK, Mao T, Oh JE, Israelow B, Takahashi T, Tokuyama M, Lu P, Venkataraman A, Park A, Mohanty S, Wang H, Wyllie AL, Vogels CBF, Earnest R, Lapidus S, Ott IM, Moore AJ, Muenker MC, Fournier JB, Campbell M, Odio CD, Casanovas-Massana A, Yale IT, Herbst R, Shaw AC, Medzhitov R, Schulz WL, Grubaugh ND, Dela Cruz C, Farhadian S, Ko AI, Omer SB, Iwasaki A (2020) Longitudinal analyses reveal immunological misfiring in severe COVID-19. *Nature* 584(7821):463–469
 81. Wilk AJ, Rustagi A, Zhao NQ, Roque J, Martinez-Colon GJ, McKechnie JL, Ivison GT, Ranganath T, Vergara R, Hollis T, Simpson LJ, Grant P, Subramanian A, Rogers AJ, Blish CA (2020) A single-cell atlas of the peripheral immune response in patients with severe COVID-19. *Nat Med* 26(7):1070–1076
 82. Lee JS, Park S, Jeong HW, Ahn JY, Choi SJ, Lee H, Choi B, Nam SK, Sa M, Kwon JS, Jeong SJ, Lee HK, Park SH, Park SH, Choi JY, Kim SH, Jung I, Shin EC (2020) Immunophenotyping of COVID-19 and influenza highlights the role of type I interferons in development of severe COVID-19. *Sci Immunol* 5(49):eabd1554
 83. Simonnet A, Chetboun M, Poissy J, Raverdy V, Noulette J, Duhamel A, Labreuche J, Mathieu D, Pattou F, Jourdain M, Licom, the Lille C, Obesity study g (2020) High prevalence of obesity in severe acute respiratory syndrome coronavirus-2 (SARS-CoV-2) requiring invasive mechanical ventilation. *Obesity (Silver Spring)* 28(7):1195–1199
 84. El-Solh A, Sikka P, Bozkanat E, Jaafar W, Davies J (2001) Morbid obesity in the medical ICU. *Chest* 120(6):1989–1997
 85. Lighter J, Phillips M, Hochman S, Sterling S, Johnson D, Francois F, Stachel A (2020) Obesity in patients younger than 60 years is a risk factor for COVID-19 hospital admission. *Clin Infect Dis* 71(15):896–897
 86. van der Voort PHJ, Moser J, Zandstra DF, Muller Kobold AC, Knoester M, Calkhoven CF, Hamming I, van Meurs M (2020) Leptin levels in SARS-CoV-2 infection related respiratory failure: a cross-sectional study and a pathophysiological framework on the role of fat tissue. *Heliyon* 6(8):e04696
 87. Bhatraju PK, Ghassemieh BJ, Nichols M, Kim R, Jerome KR, Nalla AK, Greninger AL, Pipavath S, Wurfel MM, Evans L, Kritek PA, West TE, Luks A, Gerbino A, Dale CR, Goldman JD, O'Mahony S, Mikacenic C (2020) Covid-19 in critically ill patients in the seattle region - case series. *N Engl J Med* 382(21):2012–2022
 88. Tartof SY, Qian L, Hong V, Wei R, Nadjafi RF, Fischer H, Li Z, Shaw SF, Caparosa SL, Nau CL, Saxena T, Rieg GK, Ackerson BK, Sharp AL, Skarbinski J, Naik TK, Murali SB (2020) Obesity and mortality among patients diagnosed with COVID-19: results from an integrated health care organization. *Ann Intern Med* 173(10):773–781

89. Chetboun M, Raverdy V, Labreuche J, Simonnet A, Wallet F, Caussy C, Antonelli M, Artigas A, Goma G, Meziani F, Helms J, Mylonakis E, Levy M, Kalligeros M, Latronico N, Piva S, Cerf C, Neuville M, Klouche K, Larchar R, Tamion F, Occhiali E, Snacken M, Preiser J-C, Kontar L, Riviere A, Silva S, Sarton B, Krouchi R, Dubar V, Palaiodimos L, Karamanis D, Perche J, L'Her E, Busetto L, Dicker D, Lev S, Duhamel A, Jourdain M, Pattou F (2020) Association of body mass index and other metabolic risk factors with pneumonia outcomes in critically ill patients with coronavirus disease-19: an international multicenter retrospective cohort study. <https://doi.org/10.2139/ssrn.3667634>
90. Luzi L, Radaelli MG (2020) Influenza and obesity: its odd relationship and the lessons for COVID-19 pandemic. *Acta Diabetol* 57(6):759–764
91. Morgan OW, Bramley A, Fowlkes A, Freedman DS, Taylor TH, Gargiullo P, Belay B, Jain S, Cox C, Kamimoto L, Fiore A, Finelli L, Olsen SJ, Fry AM (2010) Morbid obesity as a risk factor for hospitalization and death due to 2009 pandemic influenza A(H1N1) disease. *PLoS One* 5(3):e9694
92. Huttunen R, Syrjanen J (2013) Obesity and the risk and outcome of infection. *Int J Obes* 37(3):333–340
93. Dietz W, Santos-Burgoa C (2020) Obesity and its implications for COVID-19 mortality. *Obesity (Silver Spring)* 28(6):1005
94. Ni YN, Luo J, Yu H, Wang YW, Hu YH, Liu D, Liang BM, Liang ZA (2017) Can body mass index predict clinical outcomes for patients with acute lung injury/acute respiratory distress syndrome? A meta-analysis. *Crit Care* 21(1):36
95. Pepper DJ, Sun J, Welsh J, Cui X, Suffredini AF, Eichacker PQ (2016) Increased body mass index and adjusted mortality in ICU patients with sepsis or septic shock: a systematic review and meta-analysis. *Crit Care* 20(1):181
96. Bustamante AF, Repine JE (2013) Adipose-lung cell crosstalk in the obesity-ARDS paradox. *J Pulmonol Resp Med* 3(2). <https://doi.org/10.4172/2161-105X.1000144>
97. Michalakis K, Ilias I (2020) SARS-CoV-2 infection and obesity: common inflammatory and metabolic aspects. *Diabetes Metab Syndr* 14(4):469–471
98. Korakas E, Ikonomidis I, Kousathana F, Balampanis K, Kountouri A, Raptis A, Palaiodimou L, Kokkinos A, Lambadiari V (2020) Obesity and COVID-19: immune and metabolic derangement as a possible link to adverse clinical outcomes. *Am J Physiol Endocrinol Metab* 319(1):E105–E109
99. McArdle MA, Finucane OM, Connaughton RM, McMorrow AM, Roche HM (2013) Mechanisms of obesity-induced inflammation and insulin resistance: insights into the emerging role of nutritional strategies. *Front Endocrinol (Lausanne)* 4:52
100. Rebeles J, Green WD, Alwarawrah Y, Nichols AG, Eisner W, Danzaki K, MacIver NJ, Beck MA (2019) Obesity-induced changes in T-cell metabolism are associated with impaired memory T-cell response to influenza and are not reversed with weight loss. *J Infect Dis* 219(10):1652–1661
101. Green WD, Beck MA (2017) Obesity altered T cell metabolism and the response to infection. *Curr Opin Immunol* 46:1–7
102. Green WD, Beck MA (2017) Obesity impairs the adaptive immune response to influenza virus. *Ann Am Thorac Soc* 14(Supplement 5):S406–S409
103. Chen YM, Zheng Y, Yu Y, Wang Y, Huang Q, Qian F, Sun L, Song ZG, Chen Z, Feng J, An Y, Yang J, Su Z, Sun S, Dai F, Chen Q, Lu Q, Li P, Ling Y, Yang Z, Tang H, Shi L, Jin L, Holmes EC, Ding C, Zhu TY, Zhang YZ (2020) Blood molecular markers associated with COVID-19 immunopathology and multi-organ damage. *EMBO J*:e105896. <https://doi.org/10.15252/embj.2020105896>
104. Liu PP, Blet A, Smyth D, Li H (2020) The Science Underlying COVID-19: Implications for the Cardiovascular System. *Circulation*. 142:68–78
105. de Lucena TMC, da Silva Santos AF, de Lima BR, de Albuquerque Borborema ME, de Azevedo SJ (2020) Mechanism of inflammatory response in associated comorbidities in COVID-19. *Diabetes Metab Syndr* 14(4):597–600
106. Van Herck MA, Vonghia L, Kwanten WJ, Vanwolleghem T, Ebo DG, Michielsens PP, De Man JG, Gama L, De Winter BY, Francque SM (2020) Adoptive cell transfer of regulatory T cells exacerbates hepatic steatosis in high-fat high-fructose diet-fed mice. *Front Immunol* 11:1711
107. Gheblawi M, Wang K, Viveiros A, Nguyen Q, Zhong JC, Turner AJ, Raizada MK, Grant MB, Oudit GY (2020) Angiotensin-converting enzyme 2: SARS-CoV-2 receptor and regulator of the renin-angiotensin system: celebrating the 20th anniversary of the discovery of ACE2. *Circ Res* 126(10):1456–1474
108. Kuba K, Imai Y, Ohto-Nakanishi T, Penninger JM (2010) Trilogy of ACE2: a peptidase in the renin-angiotensin system, a SARS receptor, and a partner for amino acid transporters. *Pharmacol Ther* 128(1):119–128
109. Liu MY, Zheng B, Zhang Y, Li JP (2020) Role and mechanism of angiotensin-converting enzyme 2 in acute lung injury in coronavirus disease 2019. *Chronic Dis Transl Med* 6(2):98–105
110. Zhang H, Zhou P, Wei Y, Yue H, Wang Y, Hu M, Zhang S, Cao T, Yang C, Li M, Guo G, Chen X, Chen Y, Lei M, Liu H, Zhao J, Peng P, Wang CY, Du R (2020) Histopathologic changes and SARS-CoV-2 immunostaining in the lung of a patient with COVID-19. *Ann Intern Med* 172(9):629–632
111. Simoes e Silva AC, Silveira KD, Ferreira AJ, Teixeira MM (2013) ACE2, angiotensin-(1-7) and Mas receptor axis in inflammation and fibrosis. *Br J Pharmacol* 169(3):477–492
112. Fraga-Silva RA, Sorg BS, Wankhede M, Dedeugd C, Jun JY, Baker MB, Li Y, Castellano RK, Katovich MJ, Raizada MK, Ferreira AJ (2010) ACE2 activation promotes antithrombotic activity. *Mol Med* 16(5-6):210–215
113. Luzi L, Bucciarelli L, Ferrulli A, Terruzzi I, Massarini S (2021) Obesity and COVID-19: 2 The ominous duet affecting the renin-angiotensin system. *Minerva Endocrinol*. <https://doi.org/10.23736/S0391-1977.20.03402-1>
114. Nishimura H, Tsuji H, Masuda H, Nakagawa K, Nakahara Y, Kitamura H, Kasahara T, Sugano T, Yoshizumi M, Sawada S, Nakagawa M (1997) Angiotensin II increases plasminogen activator inhibitor-1 and tissue factor mRNA expression without changing that of tissue type plasminogen activator or tissue factor pathway inhibitor in cultured rat aortic endothelial cells. *Thromb Haemost* 77(6):1189–1195
115. van Leeuwen RT, Kol A, Andreotti F, Kluft C, Maseri A, Sperti G (1994) Angiotensin II increases plasminogen activator inhibitor type 1 and tissue-type plasminogen activator messenger RNA in cultured rat aortic smooth muscle cells. *Circulation* 90(1):362–368
116. Ahmed S, Zimba O, Gasparyan AY (2020) Thrombosis in coronavirus disease 2019 (COVID-19) through the prism of Virchow's triad. *Clin Rheumatol* 39(9):2529–2543
117. Curran CS, Rivera DR, Kopp JB (2020) COVID-19 Usurps Host Regulatory Networks. *Front Pharmacol* 11:1278
118. Schmaier AH (2002) The plasma kallikrein-kinin system counterbalances the renin-angiotensin system. *J Clin Invest* 109(8):1007–1009
119. Sodhi CP, Wohlford-Lenane C, Yamaguchi Y, Prindle T, Fulton WB, Wang S, McCray PB Jr, Chappell M, Hackam DJ, Jia H (2018) Attenuation of pulmonary ACE2 activity impairs inactivation of des-Arg(9) bradykinin/BKB1R axis and facilitates LPS-induced neutrophil infiltration. *Am J Physiol Lung Cell Mol Physiol* 314(1):L17–L31
120. Jones BH, Standridge MK, Taylor JW, Moustaid N (1997) Angiotensinogen gene expression in adipose tissue: analysis of obese models and hormonal and nutritional control. *Am J Phys* 273(1 Pt 2):R236–R242

121. Leung PS, de Gasparo M (2006) Involvement of the pancreatic renin-angiotensin system in insulin resistance and the metabolic syndrome. *J Cardiometa Syndr* 1(3):197–203
122. Schling P, Mallow H, Trindl A, Loffler G (1999) Evidence for a local renin angiotensin system in primary cultured human preadipocytes. *Int J Obes Relat Metab Disord* 23(4):336–341
123. Kalupahana NS, Massiera F, Quignard-Boulangue A, Ailhaud G, Voy BH, Wasserman DH, Moustaid-Moussa N (2012) Overproduction of angiotensinogen from adipose tissue induces adipose inflammation, glucose intolerance, and insulin resistance. *Obesity (Silver Spring)* 20(1):48–56
124. Kim S, Soltani-Bejnood M, Quignard-Boulangue A, Massiera F, Teboul M, Ailhaud G, Kim JH, Moustaid-Moussa N, Voy BH (2006) The adipose renin-angiotensin system modulates systemic markers of insulin sensitivity and activates the intrarenal renin-angiotensin system. *J Biomed Biotechnol* 2006(5):27012–27016
125. Ramalingam L, Menikdiwela K, LeMieux M, Dufour JM, Kaur G, Kalupahana N, Moustaid-Moussa N (2017) The renin angiotensin system, oxidative stress and mitochondrial function in obesity and insulin resistance. *Biochim Biophys Acta Mol basis Dis* 1863(5):1106–1114
126. Kalupahana NS, Moustaid-Moussa N (2012) The renin-angiotensin system: a link between obesity, inflammation and insulin resistance. *Obes Rev* 13(2):136–149
127. Yvan-Charvet L, Quignard-Boulangue A (2011) Role of adipose tissue renin-angiotensin system in metabolic and inflammatory diseases associated with obesity. *Kidney Int* 79(2):162–168
128. Chawla A, Nguyen KD, Goh YP (2011) Macrophage-mediated inflammation in metabolic disease. *Nat Rev Immunol* 11(11):738–749
129. Maeda A, Tamura K, Wakui H, Ohsawa M, Azushima K, Uneda K, Kanaoka T, Kobayashi R, Ohki K, Matsuda M, Tsurumi-Ikeya Y, Yamashita A, Tokita Y, Umemura S (2014) Effects of the angiotensin receptor blocker olmesartan on adipocyte hypertrophy and function in mice with metabolic disorders. *Biomed Res Int* 2014:946492–946410
130. Ouchi N, Parker JL, Lugus JJ, Walsh K (2011) Adipokines in inflammation and metabolic disease. *Nat Rev Immunol* 11(2):85–97
131. LeMieux MJ, Ramalingam L, Mynatt RL, Kalupahana NS, Kim JH, Moustaid-Moussa N (2016) Inactivation of adipose angiotensinogen reduces adipose tissue macrophages and increases metabolic activity. *Obesity (Silver Spring)* 24(2):359–367
132. Kwaifa IK, Bahari H, Yong YK, Noor SM (2020) Endothelial dysfunction in obesity-induced inflammation: molecular mechanisms and clinical implications. *Biomolecules* 10(2). <https://doi.org/10.3390/biom10020291>
133. Kelesidis T, Kelesidis I, Chou S, Mantzoros CS (2010) Narrative review: the role of leptin in human physiology: emerging clinical applications. *Ann Intern Med* 152(2):93–100
134. Paz-Filho G, Mastrorardi C, Delibasi T, Wong ML, Licinio J (2010) Congenital leptin deficiency: diagnosis and effects of leptin replacement therapy. *Arq Bras Endocrinol Metabol* 54(8):690–697
135. Paz-Filho G, Wong ML, Licinio J (2011) Ten years of leptin replacement therapy. *Obes Rev* 12(5):e315–e323
136. Pan H, Guo J, Su Z (2014) Advances in understanding the interrelations between leptin resistance and obesity. *Physiol Behav* 130:157–169
137. Zhou Y, Rui L (2013) Leptin signaling and leptin resistance. *Front Med* 7(2):207–222
138. Kershaw EE, Flier JS (2004) Adipose tissue as an endocrine organ. *J Clin Endocrinol Metab* 89(6):2548–2556
139. Paz-Filho G, Mastrorardi C, Franco CB, Wang KB, Wong ML, Licinio J (2012) Leptin: molecular mechanisms, systemic pro-inflammatory effects, and clinical implications. *Arq Bras Endocrinol Metabol* 56(9):597–607
140. Maury E, Brichard SM (2010) Adipokine dysregulation, adipose tissue inflammation and metabolic syndrome. *Mol Cell Endocrinol* 314(1):1–16
141. Dehkhoda F, Lee CMM, Medina J, Brooks AJ (2018) The growth hormone receptor: mechanism of receptor activation, cell signaling, and physiological aspects. *Front Endocrinol (Lausanne)* 9:35
142. Bodart G, Farhat K, Charlet-Renard C, Salvatori R, Geenen V, Martens H (2017) The somatotrope growth hormone-releasing hormone/growth hormone/insulin-like growth factor-1 axis in immunoregulation and immunosenescence. *Front Horm Res* 48:147–159
143. Villares R, Kakabadse D, Juarranz Y, Gomariz RP, Martinez AC, Mellado M (2013) Growth hormone prevents the development of autoimmune diabetes. *Proc Natl Acad Sci U S A* 110(48):E4619–E4627
144. Savastano S, Di Somma C, Barrea L, Colao A (2014) The complex relationship between obesity and the somatotropic axis: the long and winding road. *Growth Hormon IGF Res* 24(6):221–226
145. Serri O, St-Jacques P, Sartippour M, Renier G (1999) Alterations of monocyte function in patients with growth hormone (GH) deficiency: effect of substitutive GH therapy. *J Clin Endocrinol Metab* 84(1):58–63
146. Szalecki M, Malinowska A, Prokop-Piotrkowska M, Janas R (2018) Interactions between the growth hormone and cytokines - a review. *Adv Med Sci* 63(2):285–289
147. Tang N, Li D, Wang X, Sun Z (2020) Abnormal coagulation parameters are associated with poor prognosis in patients with novel coronavirus pneumonia. *J Thromb Haemost* 18(4):844–847
148. Miljic D, Miljic P, Doknic M, Pekic S, Stojanovic M, Cvijovic G, Micic D, Popovic V (2013) Growth hormone replacement normalizes impaired fibrinolysis: new insights into endothelial dysfunction in patients with hypopituitarism and growth hormone deficiency. *Growth Hormon IGF Res* 23(6):243–248
149. Johansson AG (1999) Gender difference in growth hormone response in adults. *J Endocrinol Investig* 22(5 Suppl):58–60
150. Verity R, Okell LC, Dorigatti I, Winskill P, Whittaker C, Imai N, Cuomo-Dannenburg G, Thompson H, Walker PGT, Fu H, Dighe A, Griffin JT, Baguelin M, Bhatia S, Boonyasiri A, Cori A, Cucunuba Z, FitzJohn R, Gaythorpe K, Green W, Hamlet A, Hinsley W, Laydon D, Nedjati-Gilani G, Riley S, van Elsland S, Volz E, Wang H, Wang Y, Xi X, Donnelly CA, Ghani AC, Ferguson NM (2020) Estimates of the severity of coronavirus disease 2019: a model-based analysis. *Lancet Infect Dis* 20(6):669–677
151. Abate BB, Kassie AM, Kassaw MW, Aragie TG, Masresha SA (2020) Sex difference in coronavirus disease (COVID-19): a systematic review and meta-analysis. *BMJ Open* 10(10):e040129
152. Jin JM, Bai P, He W, Wu F, Liu XF, Han DM, Liu S, Yang JK (2020) Gender differences in patients with COVID-19: focus on severity and mortality. *Front Public Health* 8:152
153. Peckham H, de Gruijter NM, Raine C, Radziszewska A, Ciurtin C, Wedderburn LR, Rosser EC, Webb K, Deakin CT (2020) Male sex identified by global COVID-19 meta-analysis as a risk factor for death and ICU admission. *Nat Commun* 11(1):6317
154. Lubrano C, Masi D, Risi R, Balena A, Watanabe M, Mariani S, Gnessi L (2020) Is growth hormone insufficiency the missing link between obesity, male gender, age, and COVID-19 severity? *Obesity (Silver Spring)* 28(11):2038–2039
155. Maier HE, Lopez R, Sanchez N, Ng S, Gresh L, Ojeda S, Burger-Calderon R, Kuan G, Harris E, Balmaseda A, Gordon A (2018) Obesity increases the duration of influenza A virus shedding in adults. *J Infect Dis* 218(9):1378–1382
156. Yan J, Grantham M, Pantelic J, Bueno de Mesquita PJ, Albert B, Liu F, Ehrman S, Milton DK, Consortium E (2018) Infectious

- virus in exhaled breath of symptomatic seasonal influenza cases from a college community. *Proc Natl Acad Sci U S A* 115(5): 1081–1086
157. Honce R, Karlsson EA, Wohlgenuth N, Estrada LD, Meliopoulos VA, Yao J, Schultz-Cherry S (2020) Obesity-related microenvironment promotes emergence of virulent influenza virus strains. *mBio* 11(2). <https://doi.org/10.1128/mBio.03341-19>
 158. Klinkhammer J, Schnepf D, Ye L, Schwaderlapp M, Gad HH, Hartmann R, Garcin D, Mahlakoiv T, Staeheli P (2018) IFN- λ prevents influenza virus spread from the upper airways to the lungs and limits virus transmission. *Elife* 7. <https://doi.org/10.7554/eLife.33354>
 159. Dhakal S, Klein SL (2019) Host factors impact vaccine efficacy: implications for seasonal and universal influenza vaccine programs. *J Virol* 93(21). <https://doi.org/10.1128/JVI.00797-19>
 160. Neidich SD, Green WD, Rebeles J, Karlsson EA, Schultz-Cherry S, Noah TL, Chakladar S, Hudgens MG, Weir SS, Beck MA (2017) Increased risk of influenza among vaccinated adults who are obese. *Int J Obes* 41(9):1324–1330
 161. Sheridan PA, Paich HA, Handy J, Karlsson EA, Hudgens MG, Sammon AB, Holland LA, Weir S, Noah TL, Beck MA (2012) Obesity is associated with impaired immune response to influenza vaccination in humans. *Int J Obes* 36(8):1072–1077
 162. Kosaraju R, Guesdon W, Crouch MJ, Teague HL, Sullivan EM, Karlsson EA, Schultz-Cherry S, Gowdy K, Bridges LC, Reese LR, Neuffer PD, Armstrong M, Reisdorph N, Milner JJ, Beck M, Shaikh SR (2017) B cell activity is impaired in human and mouse obesity and is responsive to an essential fatty acid upon murine influenza infection. *J Immunol* 198(12):4738–4752
 163. Karlsson EA, Hertz T, Johnson C, Mehle A, Krammer F, Schultz-Cherry S (2016) Obesity outweighs protection conferred by adjuvanted influenza vaccination. *mBio* 7(4). <https://doi.org/10.1128/mBio.01144-16>
 164. Park HL, Shim SH, Lee EY, Cho W, Park S, Jeon HJ, Ahn SY, Kim H, Nam JH (2014) Obesity-induced chronic inflammation is associated with the reduced efficacy of influenza vaccine. *Hum Vaccin Immunother* 10(5):1181–1186
 165. Callahan ST, Wolff M, Hill HR, Edwards KM, Vaccine N, Treatment Evaluation Unit Pandemic HNVSG (2014) Impact of body mass index on immunogenicity of pandemic H1N1 vaccine in children and adults. *J Infect Dis* 210(8):1270–1274
 166. Talbot HK, Coleman LA, Crimin K, Zhu Y, Rock MT, Meece J, Shay DK, Belongia EA, Griffin MR (2012) Association between obesity and vulnerability and serologic response to influenza vaccination in older adults. *Vaccine* 30(26):3937–3943
 167. Paich HA, Sheridan PA, Handy J, Karlsson EA, Schultz-Cherry S, Hudgens MG, Noah TL, Weir SS, Beck MA (2013) Overweight and obese adult humans have a defective cellular immune response to pandemic H1N1 influenza A virus. *Obesity (Silver Spring)* 21(11):2377–2386
 168. Levin AT, Hanage WP, Owusu-Boaitey N, Cochran KB, Walsh SP, Meyerowitz-Katz G (2020) Assessing the age specificity of infection fatality rates for COVID-19: systematic review, meta-analysis, and public policy implications. *Eur J Epidemiol* 35(12): 1123–1138
 169. Marik PE, DePerrior SE, Ahmad Q, Dodani S (2021) Gender-based disparities in COVID-19 patient outcomes. *J Investig Med:jim-2020-001641*. <https://doi.org/10.1136/jim-2020-001641>
 170. Williamson EJ, Walker AJ, Bhaskaran K, Bacon S, Bates C, Morton CE, Curtis HJ, Mehrkar A, Evans D, Inglesby P, Cockburn J, McDonald HI, MacKenna B, Tomlinson L, Douglas IJ, Rentsch CT, Mathur R, Wong AYS, Grieve R, Harrison D, Forbes H, Schultze A, Croker R, Parry J, Hester F, Harper S, Perera R, Evans SJW, Smeeth L, Goldacre B (2020) Factors associated with COVID-19-related death using OpenSAFELY. *Nature* 584(7821):430–436

Publisher's note Springer Nature remains neutral with regard to jurisdictional claims in published maps and institutional affiliations.