

Computerized manometry use to evaluate spasm in pharyngoesophageal segment in patients with poor tracheoesophageal speech before and after treatment with botulinum toxin

Carlos T. Chone¹, Vinicius Oliveira Seixas², Nelson A. Andreollo³, Elizabeth Quagliato⁴, Irene H. K. Barcelos⁵, Ana L. Spina⁶, Agrício N. Crespo⁷

Keywords: toxin, laryngectomy, manometry, neck, , speech.

Summary

Tracheoesophageal voice (TEV) with voice prosthesis (VP) is an efficient and reproducible method used in vocal rehabilitation after total laryngectomy (TL), prevented by spasms in the pharyngoesophageal segment (PES). Computerized Manometry (CM) is a new, direct and objective method used to assess the PES. **Aim:** to carry out an objective analysis of the PES, with CM, before and after the injection of botulinum toxin (BT). **Study design:** clinical-prospective. **Materials and Methods:** analysis of eight patients consecutively submitted to TL with TEV and VP, without vocal emission, with PES spasms seen through videofluoroscopy, considered the gold standard for spasm detection. All had their spasms treated with the injection of 100 units of BT in the PES. The assessment was based on PES videofluoroscopy and CM, before and after BT injection. **Results:** There was a PES pressure reduction according to the CM after BT injection in all patients. The average pressure in the PES seen through the CM in eight patients before BT injection was 25.36 mmHg, and afterwards it dropped to 14.31 mmHg ($p=0.004$). There was vocal emission without stress and PES spasm improvement seen through the videolaryngoscopy after BT injection. **Conclusion:** We observed a reduction in PES pressure after BT injection, seen through CM in all the patients, with spasms improvement seen through videofluoroscopy.

¹ PhD; Professor; Otorhinolaryngologist Coordinator of the Head and Neck Department – Otorhinolaryngology Program - Unicamp.

² Resident physician, Head and Neck - Otorhinolaryngology Program - Unicamp.

³ PhD; Professor; Gastric Surgeon – Head of the Surgery Department - Unicamp.

⁴ PhD; Professor; Neurologist, Department of Neurology, Unicamp.

⁵ PhD; Professor; Radiologist; Head of the Radiology Department - Unicamp.

⁶ Speech and Hearing Therapist; Graduate Student – Otorhinolaryngology and Head and Neck Program - Unicamp.

⁷ PhD; Professor; Otorhinolaryngologist – Head of the Otorhinolaryngology and Head and Neck Program - Unicamp.

This paper was submitted to the RBORL-SGP (Publishing Manager System) on 27 September 2007. Code 4827.

The article was accepted on 16 June 2008.

INTRODUCTION

Between 9% and 79% of the patients rehabilitated after total laryngectomy (TL) with tracheoesophageal speech (TES) and speech prosthesis (SP) after primary or secondary tracheoesophageal puncture (TEP) present stress-related speech difficulty associated to changes in the motility of the pharyngoesophageal segment (PES), secondary to its pharyngospasm¹⁻¹³. This PES alteration can be treated in three different ways: myotomy of middle and lower pharynx constrictors, neurectomy of the pharyngeal plexus, and the recently published technique of chemically denervating the PES with botulinum toxin (BT)^{6-8,10,11,14-24}. Botulinum toxin is a pre-synaptic blocker that prevents the release of acetylcholine in the neuromuscular junction. PES relaxation after BT application in the region can be seen through videofluoroscopy^{3,4,7,15,25}. However, small variations cannot be quantified. There are indirect assessment methods that use PES pressure, as the modified insufflation test^{4,6,15}, measurement of intratracheal pressure and speech time duration^{7,18}. This study was developed to objectively quantify PES relaxation in spastic total laryngectomy patients after BT injection and relate it to improvements in speech quality. Esophageal manometry was used to measure PES median pressure before and after BT injection in the spastic area.

MATERIALS AND METHOD

Eight consecutive patients seen in our institution between January of 2004 and October of 2006 with TES under stress and speech time of one second or less were included in this study. All had indwelling Blom-Singer (Inhealth®) speech prosthesis inserted after primary or secondary TEP. The patients were included in this study after at least six months of speech rehabilitation sessions. The speech rehabilitation sessions done with the total laryngectomy patients with TES and SP were conducted by one same experienced specialized therapist.

This study was approved by the ethics committee at our institution under permit 546/2005. Informed consent terms were collected from all patients participating in the study.

Tests conducted with the patients included assessment of mean speech time, acoustic analysis, swallowing and speech videofluoroscopy, 4-channel esophageal manometry with pneumocapillary infusion and computerized polygraph before and after injection of 100U of BT (Botox®) in the PES spastic area. Mean speech time was measured using a Tissot® stopwatch after three consecutive takes in which the patients were asked to utter the vowel /a/ in a prolonged manner after maximum air inhalation. Speech acoustic assessment was done at the speech lab using software package MDVP (Multidimensional Voice Program) by Kay Elemetrics Corporation.

Patients were requested to utter and sustain vowel /a/. The acoustic parameter used to assess speech was presence or absence of harmonics. Speech samples were recorded with a Teac W518R recorder in chrome cassette tapes and using a Prologue microphone placed 5 centimeters from the patients' mouths. Speech samples were recorded in a soundproof booth with noise level treatment. Videofluoroscopy was considered the golden standard to diagnose PES spasm. All patients complained of dysphagia. Botulinum toxin injections were applied in each third of the PES (Fig. 1) under electromyographic control of pharyngeal constrictor muscles without local anesthesia. Pharyngeal constrictor muscle punctures were done by the author, and electromyographic tracings interpreted by one same specialist. A Compass Portabook II Nicolet electromyograph connected to a Compaq® workstation was used.

Statistical analysis done for speech time, PES pressure, presence or absence of harmonics, and PES videofluoroscopy findings before and after BT injection was done using the Binomial test. A significance level of 0.05 was considered.

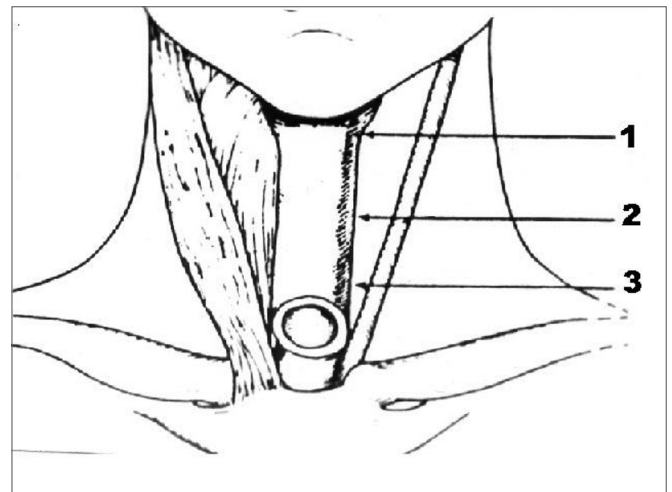


Figure 1. Schematic representation of areas of botulinum toxin injection on the three thirds of the pharyngoesophageal segment.

RESULTS

Manometry findings indicated a reduction in the PES mean pressure after botulinum toxin injection in all eight patients (Table 1 and Fig. 2). Mean PES pressure before BTY injection was 25.36 mmHg. After BT injection the PES mean pressure dropped to 14.31 mmHg ($p=0.004$).

Harmonics were identified in a statistically significant manner ($p=0.004$) in all patients during acoustic analysis after BT injection in the PES (Fig. 3). Before treatment none of the patients could produce harmonics. Effortless voice production was possible in these patients

Table 1. Pharyngoesophageal segment pressure under esophageal manometry before (PRE) and after (POST) injecting 100 U of botulinum toxin.

PATIENT	PRE	POST
1	33,0 mmHg	12,2 mmHg
2	17,27 mmHg	12,50 mmHg
3	16,79 mmHg	13,71 mmHg
4	32,7 mm Hg	19,6 mmHg
5	30,0 mmHg	14,1 mmHg
6	16,5 mmHg	13,6 mmHg
7	23,1 mmHg	15,4 mmHg
8	33,5 mmHg	13,4 mmHg

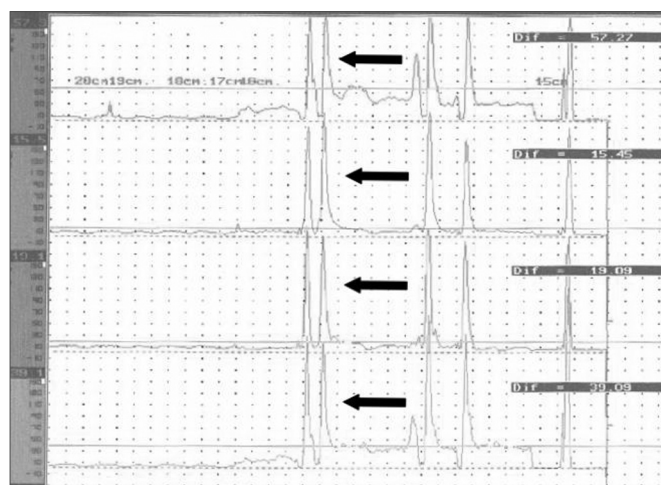


Figure 2a

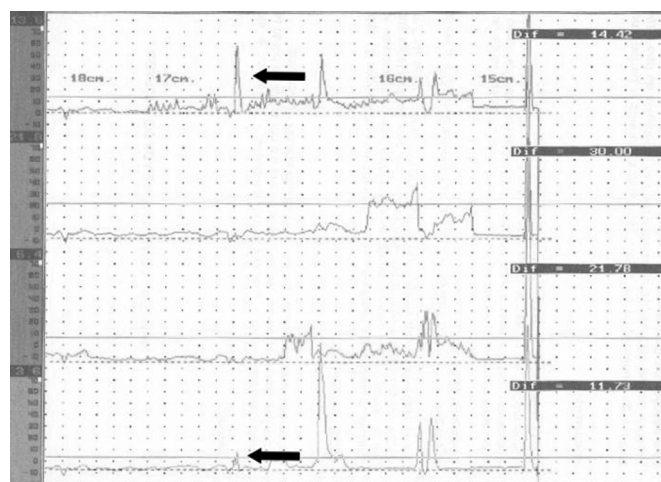


Figure 2b

Figure 2. Pressure measurements in the pharyngoesophageal segment for each channel under esophageal manometry before (a) and after (b) botulinum toxin injection. Each base line corresponds to one channel. Pharyngoesophageal segment pressure indication with arrows in each base line.

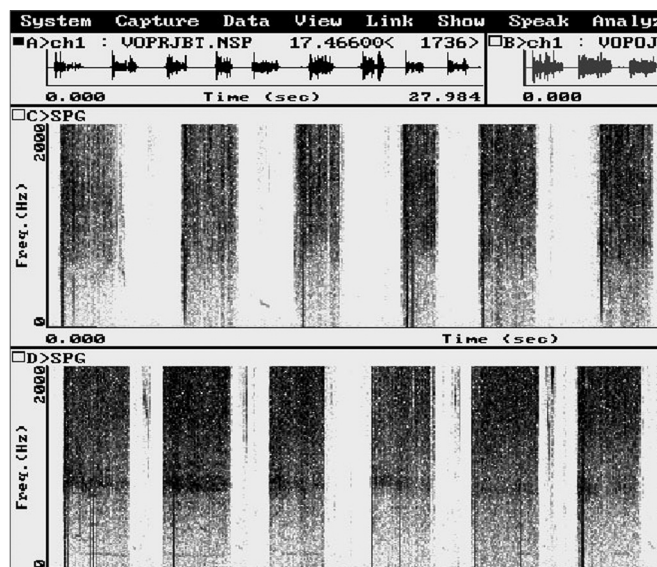


Figure 3a

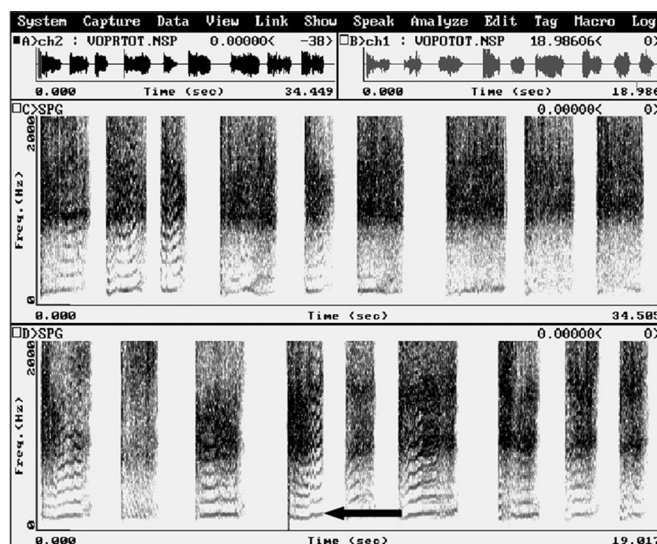


Figure 3b

Figure 3. Computerized acoustic tests before (a) and after (b) botulinum toxin injection in the pharyngoesophageal segment. Harmonics observed after botulinum toxin injection (b) not seen before BT injection. Arrow indicating harmonic.

with increased speech time ($p=0.004$). Before treatment with BT, their speech time was insignificant (Table 2). PES videofluoroscopy during speech showed significant improvements ($p=0.004$) in PES spasm (Fig. 4) for all patients. No adverse effects were associated to BT use. Clinical improvements in dysphagia were observed in all patients. Patients were followed for 15 to 48 months after BT injection, and none of the patients required additional BT injections.

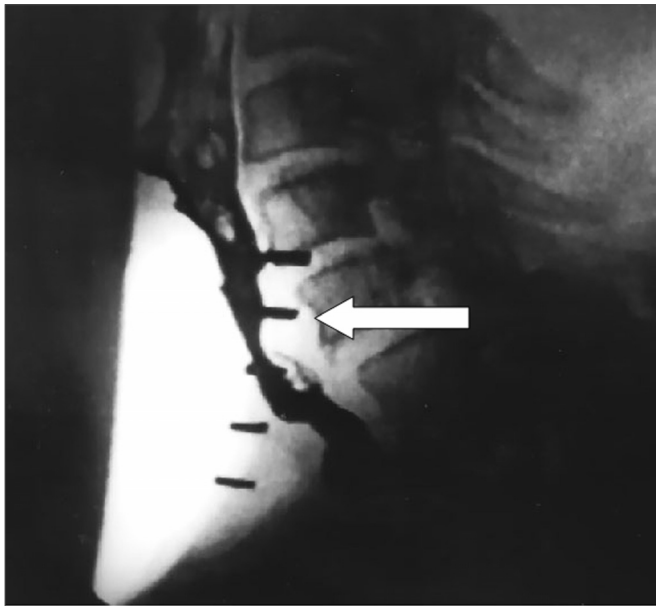


Figure 4a

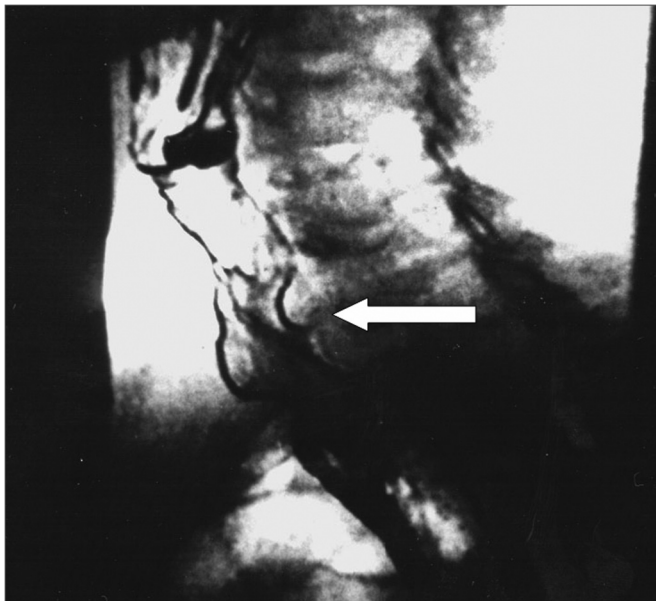


Figure 4b

Figure 4. Videofluoroscopy examination showing lateral view during speech before (a) and after (b) botulinum toxin injection on the pharyngoesophageal segment. Arrow indicates spastic area in the pharyngoesophageal segment before injection (a) and spasm-free after injection (b) with increased anteroposterior distance.

Table 2. Median speech time in seconds before and after injecting 100 U of botulinum toxin in the pharyngoesophageal segment.

Patient	Speech time (s)	
	BEFORE	AFTER
1	1,0	9,0
2	1,0	7,0
3	1,0	7,0
4	1,0	7,5
5	1,0	8,0
6	1,0	8,5
7	1,0	6,8
8	1,0	7,0

DISCUSSION

PES spasm is a reflex movement triggered by the entrance of air in the esophagus that prevents air from moving into the pharynx. Thus, the pharyngeal mucosa does not vibrate and speech is not possible^{1,3-5,7-9,13,18}. Spasms can be observed during speech tests under videofluoroscopy^{5,7,8,15,25} with relaxation during swallowing. In constriction there is no relaxation during swallowing. The treatment in this case is dilation^{4,5,25}. Spasm is a mechanism devised to protect us against gastropharyngeal reflux, but in TL patients it becomes an obstacle to speech rehabilitation^{7,8,13,25}.

BT injections in the PES were initially described in 1994 by Schneider et al.²⁶ in the treatment of swallowing disorders with upper esophageal sphincter hypertrophy or hypertonia. The authors used dosages ranging from 80 and 120 units. BT was used initially to treat PES spasm after TEP and introduction of SP by Blitzer et al.¹⁶. Some authors have shown effects for as long as two years and three months after initial use of BT, with no need of additional injections¹⁸. A possible explanation is that after the first injection the patients will readapt to the new circumstances¹⁸.

In primary TEP, myotomy of the middle and lower pharyngeal constrictor muscles is one of the stages of the described surgical approach^{12,27}. Such procedure may be related to increased incidence of postoperative salivary fistulas^{8,12}. Salivary fistulas mean longer hospital stays, higher care costs, delays in speech rehab, later introduction of oral feeding, and delays in postoperative radiotherapy. The actual need for myotomy in TEP is controversial, and ranges from 9% to 79% among TL patients as reported in the literature¹⁻¹³, as most patients with PES spasm improve spontaneously from this motor disorder six months into

follow-up on average¹. On secondary TEP, myotomy is related to an incidence of salivary fistulas of 10-20%²⁷ and the same consequences previously described may occur. The use of BT instead of myotomy to approach patients with PES spasm enables the selection of only the cases requiring PES treatment. Only patients presenting PES spasm are treated, as after six months many improve spontaneously from the condition or even do not see it develop¹. BT injections are applied in an outpatient setting with the patient seated and awaken, while the pharyngeal constrictor muscles are monitored through electromyography. This procedure is less expensive than performing a myotomy of the pharyngeal constrictor muscles¹⁷, and does not present the complications inherent to the myotomy, such as salivary fistula and PES hypotonia, the latter lacking a definitive solution and leading to hypotonic speech. One should bear in mind that even after performing a myotomy on the medial and lower pharyngeal constrictor muscles spasms may occur as the muscle fibers draw closer to each other again^{1,7,10,11,17}; botulinum toxin injections may then also be used.

Speech time evaluation is an indirect method to assess PES spasm in patients rehabilitated with TES and SP⁷. When speech time is under eight seconds, the patient may have PES spasm⁷. In this study we observed that all patients with PES spasm improved after BT injection as seen in videofluoroscopy examination. PES pressure was reduced as observed in esophageal manometry tests, and improvements were observed in speech time.

As all patients with TES and SP had marked alterations in their speech when compared to laryngeal speech, the only parameter left for evaluation was presence or absence of harmonics under computerized acoustic analysis. As patients with spasm could not speak, they could not produce harmonics. After PES BT injection and improving from spasm, all patients could speak, consequently producing harmonics as observed in computerized acoustic tests.

Objective evaluation of PES spasm can be done through measurements of intratracheal pressure, in which levels greater than 40cm of H₂O may trigger spasms¹⁸. The modified insufflation test can also be used with the same purpose, in which pressures above 20 mmHg^{10,15} indicate spasm. Using videofluoroscopy with image digital analysis also allows the measurement of spasm during speech. Esophageal manometry is another objective method to analyze PES relaxation after BT injection in the rehabilitation of TL patients with spasm. Total laryngectomy patients have median PES pressures lower than that of individuals with larynx²⁸. A previous study observed that median PES pressures after neurectomy of the pharyngeal plexus for the treatment of spasm resulted in statistically significant pressure reduction and found that pressure values greater than 20 mmHg can be used to separate patients with spasm

from patients without spasm²⁹. In this study we looked objectively into PES intraluminal pressure before and after BT injection. Reductions in PES pressure under esophageal manometry were correlated to improved speech quality. Pressure levels were reduced in all patients. Computerized esophageal manometry is an objective method that can be used in the assessment of patient response to PES spasm treatment after BT injection in TL patients, rehabilitated with TES and SP.

CONCLUSION

Computerized esophageal manometry is an objective method that allows the quantification of PES intraluminal pressure and may be viable in the analysis of the effect of BT injections in this site.

Statistically significant ($p < 0.05$) PES pressure reductions observed under esophageal manometry were seen in all patients after PES BT injection.

All patients had increases in their speech time values after BT injection ($p < 0.05$).

All PES spasm patients who took BT injections presented PES pressure reduction and improved spasm under videofluoroscopy ($p < 0.05$).

REFERENCES

1. Lavertu P, Guay ME, Meeker SS, Kmiecik JR, Secic M, Wanamake JR et al. Secondary tracheoesophageal puncture: factors predictive of voice quality and prosthesis use. *Head Neck*. 1996;18:393-8.
2. Blom ED, Pauloski BR, Hamaker RC. Functional outcome after surgery for prevention of pharyngospasms in tracheoesophageal speakers. Part I: Speech characteristics. *Laryngoscope*. 1995;105: 1093-103.
3. Blom ED, Pauloski BR, Hamaker RC. Functional outcome after surgery for prevention of pharyngospasms in tracheoesophageal speakers. Part I: Speech characteristics. *Laryngoscope*. 1995;105: 1093-103.
4. Sloane PM, Griffin JM, O'Dwyer TP. Esophageal insufflation and videofluoroscopy for evaluation of esophageal speech in laryngectomy patients: clinical implications. *Radiology*. 1993;181:433-7.
5. Singer MI, Blom ED. An endoscopic technique for restoration of voice after laryngectomy. *Ann Otol Rhinol Laryngol*. 1980;89:529-33.
6. Blom ED, Singer MI, Hamaker RC. An improved esophageal insufflation test. *Arch Otolaryngol*. 1985;111:211-2.
7. Blom ED, Singer MI, Hamaker RC. A prospective study of tracheoesophageal speech. *Arch Otolaryngol Head Neck Surg*. 1986;112:440-7.
8. Singer MI, Blom ED. Selective myotomy for voice restoration after total laryngectomy. *Arch Otolaryngol*. 1981;107:670-3.
9. Singer MI, Blom ED, Hamaker RC. Pharyngeal plexus neurectomy for alaryngeal speech rehabilitation. *Laryngoscope*. 1986;96:50-3.
10. Callaway E., Truelson JM, Wolf GT, Kincaid LT, Cannon S. Predictive value of objective esophageal insufflation testing for acquisition of tracheoesophageal speech. *Laryngoscope*. 1992;102:704-8.
11. Hamaker RC, Singer MI, Blom ED, Daniels HA. Primary voice restoration at laryngectomy. *Arch. Otolaryngol*. 1985;111:182-6.
12. Yoshida GY, Hamaker RC, Singer MI, Blom ED, Charles GA. Primary voice restoration at laryngectomy:1989 update. *Laryngoscope*. 1989;99:1093-5.
13. Lau WF, Wei WI, Ho C M, Lam KH. Immediate tracheoesophageal puncture for voice restoration in laryngopharyngeal resection. *Am J Surg*. 1988;156:269-72.

-
14. Stiernberg CM, Bailey BJ, Calhoun KH, Perez DG. Primary tracheoesophageal fistula procedure for voice restoration: The University of Texas medical branch experience. *Laryngoscope*. 1987;97:820-4.
 15. Baugh RF, Lewis JS, Baker SR. Vocal rehabilitation of tracheoesophageal speech failures. *Head Neck*. 1990;12:69-73.
 16. Blitzer A, Komisar A, Baredes S, Brin MF, Stewart C. Voice failure after tracheoesophageal puncture: management with botulinum toxin. *Otolaryngol Head Neck Surg*. 1995;113:668-70.
 17. Crary MA, Glowalski AL. Using botulinum toxin A to improve speech and swallowing function following total laryngectomy. *Arch Otolaryngol Head Neck Surg*. 1996;122:760-3.
 18. Hoffman HT, Fischer H, Vandenmark D, Peterson KL, McCulloch TM, Karnell LH et al. Botulinum toxin injection after total laryngectomy. *Head Neck*. 1997;19:92-7.
 19. Mahieu HF, Annyas AA, Schutte HK, Jagt EJ Van Der. Pharyngo-esophageal myotomy for vocal rehabilitation of laryngectomees. *Laryngoscope*. 1987;97:451-7.
 20. Terrell JE, Lewin JS, Esclamado R. Botulinum toxin injection for post-laryngectomy tracheoesophageal speech failure. *Otolaryngol Head Neck Surg*. 1995;113:788-91.
 21. Zormeier MM, Meleca RJ, Simpsom ML, Dworkin JP, Klein R, Gross M et al. Botulinum toxin injection to improve tracheoesophageal speech after total laryngectomy. *Otolaryngol Head Neck Surg*. 1999;120:14-19.
 22. Hamaker RC, Blom ED. Botulinum neurotoxin for pharyngeal constrictor muscle spasm in tracheoesophageal voice restoration. *Laryngoscope*. 2003;113:1479-82.
 23. Chone CT, Spina AL, Crespo AN, Gripp FM. Speech rehabilitation after total laryngectomy: long-term results with indwelling voice prosthesis Blom-Singer. *Rev Bras Otorrinolaringol. (Engl Ed)* 2005;71:504-9.
 24. Chone CT, Gripp FM, Spina AL, Crespo AN. Primary versus secondary tracheoesophageal puncture for speech rehabilitation in total laryngectomy: long-term results with indwelling voice prosthesis. *Otolaryngol Head Neck Surg*. 2005;133:89-93.
 25. McIvor J, Evans Pf, Perry A, Cheesman Ad. Radiological assessment of post laryngectomy speech. *Clin Radiol*. 1990;41:312-6.
 26. Schneider I, Thumfart WF, Pototschnig C, Eckel HE. Treatment of dysfunction of the cricopharyngeal muscle with botulinum A toxin: introduction of a new, noninvasive method. *Ann Otol Rhinol Laryngol*. 1994;103:31-5.
 27. Blom ED, Hamaker RC. Tracheoesophageal voice restoration following total laryngectomy. In Myers EN, Suen JY. *Cancer of the head and neck*. Third ed., Philadelphia: W.B. Saunders Co.; 1996. p.839-52.
 28. Choi EC, Hong WP, Yoon HC, Nam JI, Som EJ, Kim KM et al. Changes of esophageal motility after total laryngectomy. *Otolaryngol Head Neck Surg*. 2003;128:691.
 29. Koybasioglu A, Oz O, Uslu S, Ileri F, Inai E, Unai S. Comparison of pharyngo-esophageal segment pressure in total laryngectomy patients with and without pharyngeal neurectomy. *Head Neck*. 2003; 25:617-23.